



Vol. 1



Tsui Ping River  
翠屏河

源，水本也。  
流，水行也。

The flow of the river is ceaseless;  
and its water is never the same.

「無中生有」翠屏河  
*Evolution of Tsui Ping River*

翠屏大事記  
*Major Events in Tsui Ping's History*

老街坊眼中的大坑渠社區  
*Living History: Community Memories from Long-Time Residents*

渠務署的前半生  
*The Early Years of the Drainage Services Department*

翠屏河新動向  
*Tsui Ping River Updates*

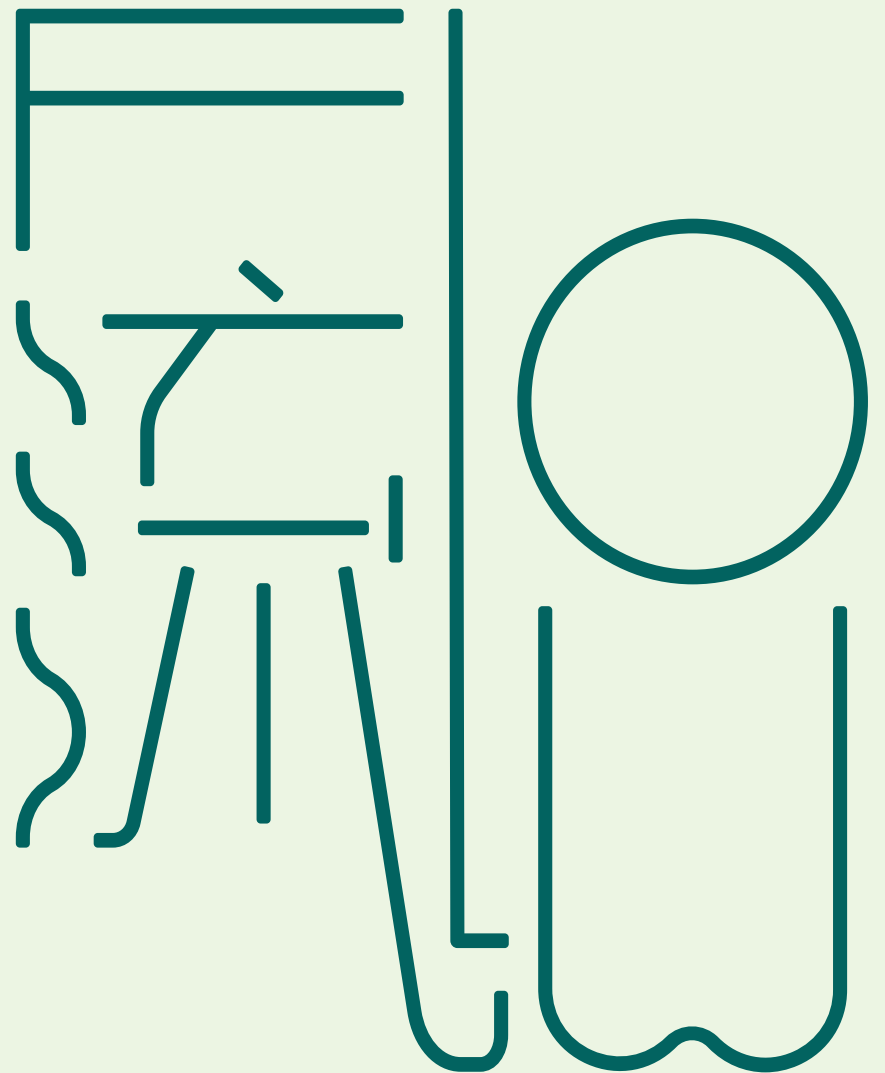
04

14

20

30

36





# 翠屏河

Future 未來



過去 Past

T  
P  
R

# 「無中生有」的

# 翠屏河

## Evolution of Tsui Ping River

如果行經觀塘，不論是開車或步行，免不了會經過觀塘道與翠屏道交界的一段明渠。在過去許多年間，它並不算觸目，但道路使用者又不會無視它的存在，畢竟市區中有一條明渠的地方並不多，在鬧市中的一條水道貫穿最繁忙的街道，任何人也難以無視它的存在。而這條水道，除了一直默默的存在著，見證整個社區的變遷外，它自己本身亦悄悄地起了變化。

Whether you're driving or walking, a trip to Kwun Tong almost always brings you to the open nullah situated at the junction of Kwun Tong Road and Tsui Ping Road. Although unassuming at first glance, this waterway possesses a distinct presence that captures the attention of all road users. After all, it's uncommon to find an open nullah in an urban setting, and with such a watercourse threading its way through the busiest streets in the heart of the city. It's near impossible for anyone to overlook its presence. This waterway, quietly witnessing the community's transformation, has itself undergone changes too.

比如說，它的名字，甚至它的流向，也一直在變，而且在不同人的心目中，也有著不同的「形態」。有些人只看到一潭水，也有人看到一條渠，亦有些人見到一條河，亦有不熟悉觀塘的人可能什麼也看不到，反問：「原來呢度有條河㗎咩？」這條只有一公里長的水道，雖然不是滔滔江水，卻在大半世紀內靜靜地見證著九龍人口密度最高地區之一的發展，也在不同的時代中為觀塘這個地方賦予不同的意義。時間在流動，水亦然。昔日的渠，今天變身成「翠屏河」的流水，它與周邊的社區如何共生？一直以來又為大家賦予了怎樣的生活和價值呢？

For example, its name and its course have constantly been changing, and it manifests different forms in the minds of different people. Some see just a pool of water, some see a nullah, while others consider it to be a river. Those unfamiliar with Kwun Tong might overlook it entirely, even questioning, 'Is there really a river here?' Though this waterway spans only a kilometre and is no roaring river, it has quietly witnessed the development of one of Kowloon's most densely populated areas for over half a century. It has also imparted different meanings to Kwun Tong in different areas. As time flows, so does the water. The nullah of the past has transformed into the Tsui Ping River of today. How does it coexist with the surrounding community? And how does it intertwine with our daily lives?

「活化翠屏河」不單是一項改善環境、生態和景觀的工程，更是一項加強人與自然和城市共生的項目，並探索公共空間的不同可能性。《翠屏河·誌》希望透過訪問翠屏河這個社區的人和事，還有追溯社區的過去，不單是作出記錄，還有拋磚引玉，邀請大家一起探索翠屏河兩岸未來的可能性。

The Revitalization of Tsui Ping River project expands beyond merely improving the environment, ecology, and landscape. It's also an endeavour to reinforce the coexistence between humans and nature in an urban setting and explore the possibilities our shared public spaces can offer. TPR MAG aims to chronicle the river's journey of transformation – from interviewing locals and retracing the community's past to envisaging future opportunities. This undertaking isn't just about preserving history, but also about igniting conversations, and inviting everyone to envision the future possibilities of the Tsui Ping River.



40s



60s



70s



80s

## 這是一條無名小溪

觀塘在古代又稱為「官富場」，曾有一段很長時間因海邊的鹽場注入海水後像池塘，因而取名「官塘」，至清朝才改稱「觀塘」。翻開任何一幅九龍的舊地圖或古代文獻，觀塘並沒有「翠屏河」這個名字，但在1950年代以前的地圖上可看到觀塘一帶是臨海的山林之地，當中有一條約隱約現的小溪，周邊有些小支流，由山上（即今天秀茂坪及寶達邨一帶）流經觀塘再出大海。水流沒有特定導向，當時仍是彎彎曲曲的天然溪流，十分淺水，亦多沙石，附近的村民在溪的兩岸鋪設簡陋木板作「過河」之用。至1950年代末，香港人口激增，觀塘開始出現徙置區，在今天的翠屏邨位置，就是政府最初在觀塘興建的雞寮徙置區，而這個社區的出現，也是小溪開始起變化的引子。



## An Unnamed Stream

Historically known as 'Kwun Foo Salt Pans', Kwun Tong (官塘, literally means government-owned pond) derived its name from the sea water-infused salt pans along the seashore, creating a pond-like formation. This name remained until the Qing Dynasty when it was renamed 'Kwun Tong' in Chinese (觀塘; 官 and 觀 have the same pronunciation in Cantonese but is written differently in Chinese). If one were to examine any maps or documents of Kowloon prior to the 1950s, there would be no mention of Tsui Ping River in Kwun Tong. However, cartography from this time period depicts Kwun Tong as a coastal region characterised by hills and woods, dotted with a barely noticeable stream and a few small tributaries. This stream, which stemmed from the hills in what is now known as the Sau Mau Ping and Po Tat Estate areas, wound its way through Kwun Tong before entering the Victoria Harbour. This natural stream, meandering and shallow, was filled with pebbles and lacked a clear direction. The nearby villagers created makeshift crossings by laying wooden planks on either side of the stream. As the 1950s came to an end and Hong Kong's population underwent rapid growth, resettlement areas began to emerge in Kwun Tong. Kai Liu, one of the first of its kind, was constructed by the government at what is now known as Tsui Ping Estate. The emergence of this settlement also marked the beginning of the stream's transformation.



## 小溪流變成大坑渠

由一幀1964年拍得的鳥瞰圖可見，雞寮徙置區有多棟H型七層大廈，並有一條河道在大廈中間流過。河道的流向更清晰，明顯奔向海旁的填海區，而且河道本身也被人為拉直了。雞寮徙置區（翠屏邨的前身）的落成，顯示溪水不再默默流過，而是與人類開始產生互動。一些雞寮居民開始在水道上游養豬養雞，用溪水作飼養禽畜之用。因此，當溪水流到下游的徙置區時，已受到污染，既不能用作洗滌，也不宜飲用，但不時會有小孩戲水。當時的雞寮居民稱之為「大坑渠」，縱然是排污渠，且時有臭味，但由於徙置區居民步行去第1座交租，大坑渠是必經之路，因此，這條明渠成了區內的「著名地標」。

## From 'Stream' to a 'Big Nullah'

An aerial snapshot from 1964 reveals a cluster of seven-story H-shaped buildings in the Kai Liu Resettlement Area, with a waterway coursing through the buildings. As the waterway was purposefully straightened, the course of the water flow became more noticeable, clearly heading towards the reclaimed land by the sea. With the establishment of the Kai Liu Resettlement Area (the predecessor of Tsui Ping Estate), the once unassuming stream began to intertwine with human activities.

A number of Kai Liu inhabitants took up poultry and pig farming upstream, utilising the stream water for their livestock. Consequently, by the time the water flowed downstream to the resettlement area, it had become polluted - unfit for consumption or washing, yet occasionally children could still be found playing in it. The locals of Kai Liu referred the waterway as the 'Big Nullah'. Despite functioning as a drainage channel and occasionally giving off an unpleasant odour, the Big Nullah ran alongside the path that residents of the resettlement area had to take to reach Block 1 for their rent payment. And hence, the nullah became a 'landmark' of the area.

## 當坑渠有了名字

1970年代初期對雞寮居民來說，既是厄運，也是轉運的時代。1972年6月18日發生的「618事件」，港九多處發生嚴重山泥傾瀉，當時有報章形容為「戰後最慘天災」。單是在雞寮，山泥由上游的秀茂坪山坡湧下，對雞寮造成嚴重破壞，整個觀塘慘埋數百人。據居民憶述，不幸中之大幸是雞寮的明渠由於渠身建築較高，因此渠內沒有出現水浸掩沒徙置區。

翌年，香港房屋委員會成立，全港的徙置區劃一稱為「邨」，因此雞寮徙置區以街道（翠屏道）命名，改稱「觀塘（翠屏道）邨」。1980年代，政府決定重建徙置區大廈，觀塘（翠屏道）邨正式開始重建，歷時十多年。這個期間，「大坑渠」逐漸被稱為「翠屏道明渠」。至後來因翠屏邨的發展而必須進行明渠覆蓋工程，因此大坑渠只由「邨口」開始向海方向才有明渠部份。

## When it the Nullah Earned Its Name

The early 1970s presented a mix of curses and blessings for the residents of Kai Liu. The 18 June Incident in 1972 saw catastrophic landslides in various parts of Hong Kong and Kowloon. The press of the time labelled it as the 'worst disaster since World War II'. In Kai Liu, a landslide cascaded from the hills of Sau Mau Ping, inflicting significant damage upon the settlement and burying hundreds of Kwun Tong residents. However, as remembered by the locals, there was a silver lining amid the calamity: the elevated nullah wall in Kai Liu prevented the resettlement area from being overwhelmed by floods.

The following year saw the establishment of the Hong Kong Housing Authority and a subsequent renaming of all resettlement areas in Hong Kong to 'Estates'. Consequently, the Kai Liu Resettlement Area was rebranded as Kwun Tong (Tsui Ping Road) Estate, named after the street on which it was located. During the 1980s, a government decision instigated a decade-long redevelopment of the Estate. Throughout this period, the Big Nullah slowly assumed the name Tsui Ping Road Nullah. Following the development of Tsui Ping Estate, a project was initiated to cover the open nullah. As a result, the Big Nullah remained open only in the segment extending from the Estate's entrance towards the sea.

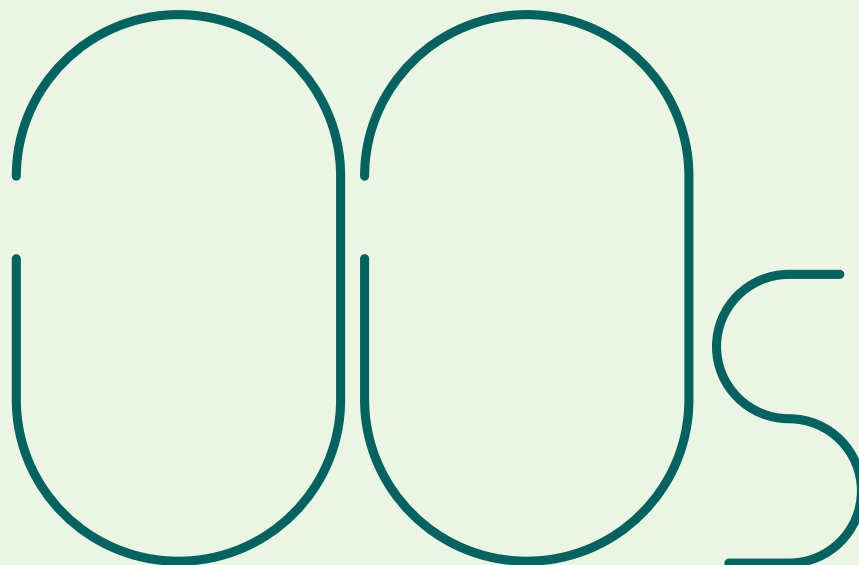
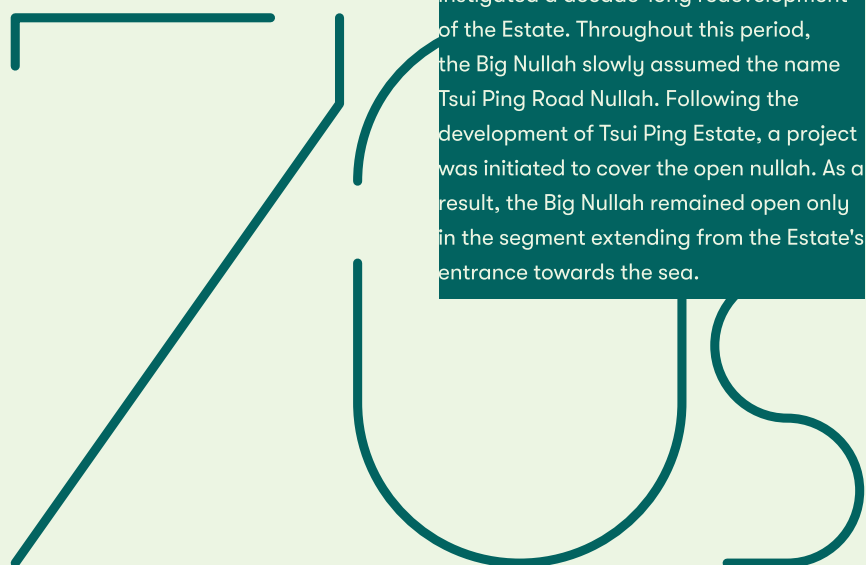


## 「升級」成為河流

翠屏道明渠這名字由1980年代一直用至2000年代，有整整30多年，肩負起排洪的作用。至2011年開始，隨著「起動九龍東」的都市升級改造計劃，翠屏渠也 upgrade 正名為翠屏河。除了在意義上擺脫「渠」的負面形象外，現實環境中也逐步去掉「渠」的氣味和顏色，進而變成有「河」的優美和休閒特質。如2019年開幕的翠屏河花園，正是鬧市中河畔的休憩空間。而未來，亦陸續有各類工程和建設，令翠屏河成為更宜人更吸引的地景，並重新連結河流和社區。

## From Nullah to River

From the 1980s through the 2000s, spanning over three decades, the Tsui Ping Road Nullah (also known as King Yip Street Nullah) served its crucial function of flood control. Beginning in 2011, with the launch of the Energizing Kowloon East urban revitalization initiative, the Tsui Ping Road Nullah was officially renamed as Tsui Ping River. Besides shedding the negative connotations associated with a nullah, it has, in reality, been gradually relieved of the offensive odours and odd colours of a nullah, thus beginning to embody the beauty and recreational qualities of a river. The Tsui Ping River Garden, opened in 2019, is a serene riverside space amidst the bustling city. The revitalization project is set to make the Tsui Ping River an even more pleasant and attractive landscape, re-establishing the connection between the river and the community.



大

事

記

翠屏大事記

Major Events  
in Tsui Ping's History

## 古代為鹽場

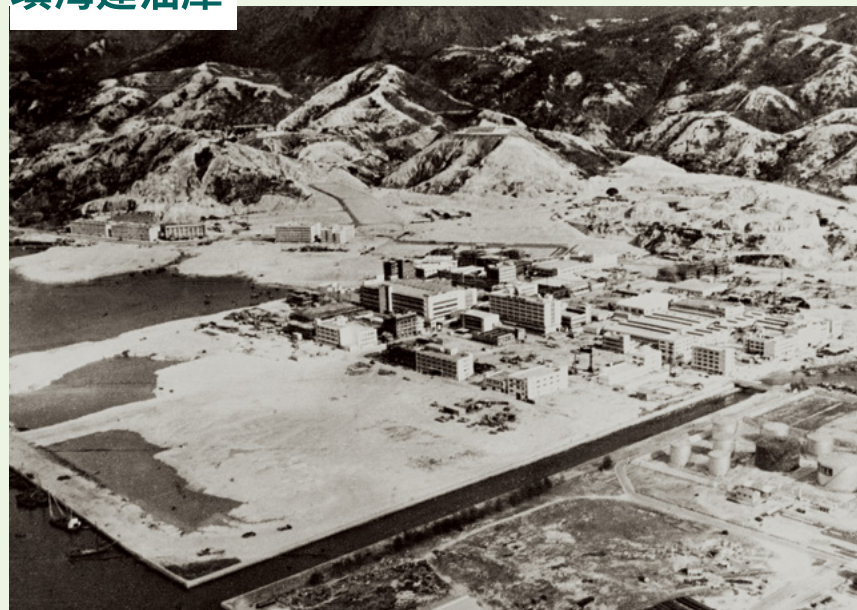
觀塘一帶為鹽場，由官府營辦，故又稱為「官富場」。當時觀塘有不少河溪，村民搭建木板過河，這個情況至少由宋代一直維持到二十世紀初。



### Ancient Salt Pans

Also known as 'Kwun Foo Salt Pans', the area of Kwun Tong used to be filled with salt pans set up by the government. Streams crisscrossed the area, leading villagers to build wooden structures to cross over the waterways. This practice dated back to the Song Dynasty and continued until the early 20th century.

## 填海建油庫



1950年代，亞細亞油庫在新填海的土地上建成，改變了原本翠屏河的水流和觀塘的地貌。油庫一直運作至1990年代才撤出，變成今天的麗港城。



## 雞寮的出現

二次世界大戰後，香港人口激增，觀塘也不例外，政府在現時翠屏邨位置興建雞寮徙置區，以安頓激增的人口。至1980年代，政府決定重建徙置區大廈為新式的公共屋邨，並命名為翠屏邨。

### The Emergence of Kai Liu

Following World War II, Hong Kong experienced a significant increase in population, and Kwun Tong was not an exception. To accommodate the growing population, the government established the Kai Liu Resettlement Area at the current location of Tsui Ping Estate. In the 1980s, the government decided to redevelop the resettlement buildings into modern public housing, and the area was named Tsui Ping Estate.



### Reclamation for Oil Storage Facilities

In the 1950s, the Asiatic Petroleum Company constructed an oil depot on newly reclaimed land, changing both the course of the Tsui Ping River and the landscape of Kwun Tong. The oil depot continued in operation until the 1990s when it was decommissioned, paving the way for the development of the present-day Laguna City.

## 山泥傾瀉

雞寮曾多次發生山泥傾瀉，其中最嚴重的分別發生於1963年和1972年。前者於晚間時分山泥從秀茂坪山上湧下，不少商舖以及學校被沙泥塞滿，造成嚴重的損失及人命傷亡，該區住戶亦需要搬到觀塘社區中心避難；1972年6月18日更慘埋數百人。災後居民發起募捐，為618山泥傾瀉死者於地藏王廟立紀念碑。



## Landslide

Kai Liu witnessed several landslides, with the most devastating ones occurring in 1963 and 1972. The former happened in the evening when a landslide surged down from the hills of Sau Mau Ping, filling many shops and schools with sand and mud, causing severe loss and casualties. As a result, residents of the area were compelled to evacuate to the Kwun Tong Community Centre. Tragically, on 18 June 1972, hundreds of lives were lost in another landslide. In the wake of this catastrophe, residents raised funds to erect a memorial monument at the Tei Chong Wong Temple, commemorating the victims of the 18 June landslide.



## 起動九龍東

2011年，政府發起的都市升級改造計劃「起動九龍東」，九龍灣及觀塘區分階段出現都市更新項目，翠屏河是此一範圍之內，其中綠化建設翠屏河花園已於2019年3月1日全面開放，其他相關設施亦會於未來數年陸續落成。



## Energizing Kowloon East

In 2011, the government launched the urban revitalization initiative, Energizing Kowloon East. It incorporated progressive urban renewal projects across Kowloon Bay and Kwun Tong, including revitalization of the Tsui Ping River. A key greening endeavour, Tsui Ping River Garden, was officially opened on 1 March 2019. Other associated facilities will also be completed in the coming years.

# 大坑渠

# 社區

老街坊  
眼中的  
大坑渠社區

*Living History:  
Community Memories from  
Long-Time Residents*

「嗰時啲細路真係好大膽，住一樓嘅會開把遮當降落傘，就咁樣跳落河邊嘅空地上。」

*'Kids in those days were indeed fearless. Those living on the first floor would use an umbrella as an improvised parachute and take a daring leap onto the riverbank'*

### 在雞寮養豬的日子

我 1962 年搬入雞寮，嗰時 5 歲，我屋企係養豬嘅，就係雞寮後面啲山上養，由屋企行去老豆養豬嘅地方需要 15 分鐘左右。

我老豆就靠山上啲水幫豬沖涼同餵豬。所以我哋主要靠秀茂坪嘅水源生活。當時老豆養豬嘅地方仲有租俾一家人曬臘腸，因為上面地方夠大。

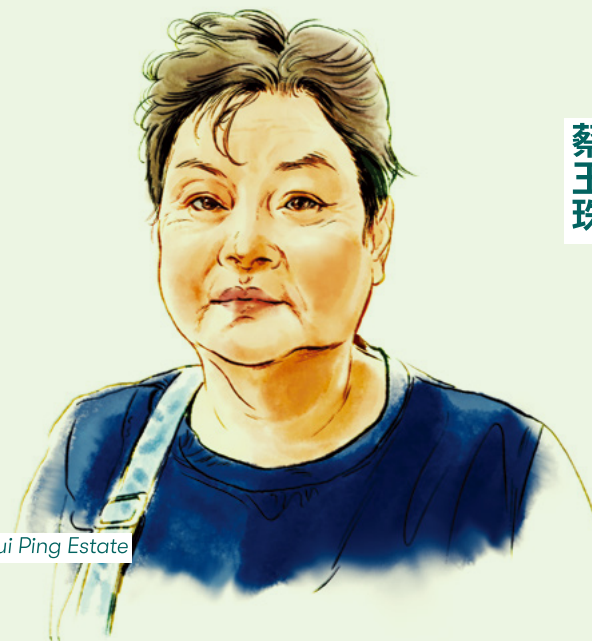
雖然呢度叫雞寮，不過冇人會喺屋企內養雞啦，反而會喺後面偏遠啲嘅山上養。當時只要你夠膽去搭間屋霸地，就可以養雞，但佢哋需要自己去拖水喉駁水源。不過雞寮徙置區重建時，附近嘅菜田呀、豬棚呀、養雞嘅，就開始消失。

### 紅番區品流複雜但住得好開心

雞寮（徙置區）重建時，有啲鄰居選擇搬去其他區，例如竹園，其次係秀茂坪，當時嗰邊啲交通方便啲。但我哋就選擇住喺旁邊起好的中轉房，原區安置，之後到八十年代公屋（即翠屏邨）起好就上樓，由始至終都無離開過呢個屋邨。我選擇留低係因為我個仔鍾意呢度，佢好鍾意去山邊玩水，啲細路會喺溪邊玩「捉伊人」，有時都會係坑邊玩，尤其是夏天嗰陣。好彩嘅係，咁多年來都冇聽過有細路遇溺，不過嗰時啲細路真係好大膽，住一樓嘅會開把遮當降落傘，就咁樣跳落河邊嘅空地上。

以前雞寮又叫「紅番區」，人流好雜。如果有人搭的士話去雞寮 24 座，的士司機多數唔會入，因為 24 座喺最入面，曾經有劫案發生，唔俾錢就傷害你。但係嗰時住七層大廈（徙置區）真係好開心，街坊街里關係好好，一打開門就見到隔離，一叫就大家有得食。以前一家人煲糖水，就成條巷都有得食。以前去街連鎖匙都唔洗帶。

翠屏邨街坊  
主婦  
蔡玉珠



Resident of Tsui Ping Estate  
Housewife  
Choi Yuk-chu

### Pig farming in Kai Liu

In 1962, when I was just five years old, my family moved to a place called Kai Liu. Our main source of income was pig farming. Our farm, nestled in the nearby hills, was a short 15-minute walk from home.

Given the considerable size of the farm, my father decided to lease part of it to another family for sausage drying. The water that flowed from the hills of Sau Mau Ping was vital to the farm. My father used it to wash and feed the swine.

Interestingly, despite its name Kai Liu, which literally means chicken shed, no one actually raised chickens within the settlement. Instead, they were usually kept on the hills behind the area. Anyone with a pioneering spirit could start a poultry business – all it took was the courage to stake out a plot of land on these hills, build some sheds, and sort out your water supply. Yet, these rural scenes of vegetable fields, pig and chicken farms began to fade away when the Kai Liu Resettlement Area underwent redevelopment.

### Strong Community Bonds in an Unruly Neighbourhood

During the redevelopment of the Kai Liu Resettlement Area, many neighbours opted to move to more accessible areas, like Chuk Yuen or Sau Mau Ping. We, on the other hand, decided to stay. We temporarily lived in nearby interim housing. Our plan was to wait for the completion of a local public housing, that is, the Tsui Ping

Estate, and move there in the 1980s once the construction was complete.

The primary reason we decided to stay was my son's attachment to the neighbourhood. He enjoyed playing in the streams cascading down the hills. Kids loved playing games of hide and seek there. They were also fond of frolicking around the nullah, especially during the warm summer months. We were fortunate that over the years there were no instances of any children drowning. Kids in those days were indeed fearless. Those living on the first floor would use an umbrella as an improvised parachute and take a daring leap onto the riverbank.

Kai Liu was notoriously known as a 'dangerous district', teeming with an unruly mix of people. It was no taxi driver's favourite destination, and this was particularly true for Block 24, the settlement's most secluded section, especially after reports of robberies involving assaults on uncooperative individuals. Despite these challenges, living inside the seven-story resettlement building was a positive experience. The sense of community was sensational. Simply opening your door meant bumping into friendly neighbours, and a quick shout would gather everyone for a shared meal. The norm of sharing was so well-rooted that if a family prepared a dessert, everyone on the same floor was sure to receive a portion. The trust within this community was so strong that people seldom felt the need to carry a key when leaving home.

「山坑上有人種菜，  
我地唔洗幫襯，  
大家街坊街里，  
行過就去擺一紮。  
以前好有人情味。」

*‘Our neighbours grew vegetables on the surrounding hills. We rarely had to buy produce; we could simply pick a bunch while pass. This spirit of sharing was what defined our community in Kai Liu.’*

## 外人不敵入雞寮 曾目擊山泥傾瀉

我都係六幾年嗰時搬來雞寮，之前住喺深水埗。最初搬來住C座，嗰時徙置區出入好唔方便，得一條巴士路線11B去九龍城碼頭，如果要由外面返觀塘，啲車通常都停喺裕民坊，我哋再俾3毫子坐人力車返雞寮。

以前雞寮治安唔係幾好，我記得我生第一胎時，我姨婆想封利是俾我，但唔敢入嚟雞寮，於是我要出觀塘收利是。

以前呢度有唔少道友，我記得有次發生山泥傾瀉，我走過去睇吓發生咩事。倒塌嘅位置有一個鴉片煙檔，有很多人喺入面食緊鴉片，應該已經迷迷糊糊，所以走唔切，就咁被活埋。我睇到好多人被抬出來，自己都驚到瞓唔到，要食安眠藥先瞓到覺。點知啲鄰居以為我自殺，送咗我去明愛醫院。

## 賣銀針粉到開茶餐廳 社區充滿人情味

雖然治安麻麻地，但我哋住呢度啲街坊好好，我老豆嗰時做銀針粉去賣，當時啲鄰居好包容，街坊都有咩投訴，因為當時的大廈中央是樓梯，

老豆一早起身就要去梯口整火水爐做銀針粉，鄰居睇佢做，做完即刻有得食。我爸爸係全香港最先做銀針粉嘅人，要交貨去秀茂坪、藍田、九龍城，一日做2000幾斤。

當時七層大廈冇自來水的，只有水喉水，家家戶戶去都係去大廈中央樓梯取水，廚廁共用。沖涼一格一格冇嘢遮。

條坑渠當時係爛地，我記得唔係成日有水，要等海水漲先有水，仲有山坑流落嚟啲水，間中會有細路去玩水。

山坑上有人種菜，我地唔洗幫襯，大家街坊街里，行過就去擺一紮。以前好有人情味。

我自己最初喺七層大廈開舖頭賣豆漿；嗰時我都會上山摘崩大碗、田灌草，之後將啲草藥搞爛，加冰同放糖做凍茶，當時主要客源係地盤工人，不過後來因為衛生問題就冇再賣喇，改賣糖水，亦有賣銀針粉。但當時收入只有一千蚊左右，唔夠養三個子女，於是我就開茶餐廳。

當時茶餐廳係可以俾鄰居賒帳，如果有道友嚟，都會叫夥計去裝飯俾佢哋食，但唔會俾錢佢哋。



Resident of Tsui Ping Estate  
Former Cha Chaan Teng Owner  
Lee So-yin

翠屏邨街坊  
茶餐廳前東主  
李素賢

## Kai Liu: A No-Go Zone for Outsiders

In the 1960s, my family made the move from Sham Shui Po to Kai Liu, setting up our home in Block C of what was then a relatively remote resettlement area. We were served by only one bus route, the 11B, which connected us to the Kowloon City Ferry Pier. Whenever we came back from any place beyond Kwun Tong, our journey usually ended at Yue Man Square. From there, we'd have to shell out an extra 30 cents for a rickshaw ride to bring us back to Kai Liu.

In those days, safety was a significant concern in Kai Liu. I vividly recall how, upon the birth of my first child, my aunt wanted to give me a red packet (money gift). Yet, fear of coming to Kai Liu meant I had to go to Kwun Tong to collect the gift.

There was also a troubling presence of drug users in the area back then. A particularly distressing incident occurred when a landslide hit a building housing an opium den. People inside the den, presumably too impaired to escape, ended up being buried alive. Driven by curiosity, I went to see the aftermath but the sight of victims being carried out was extremely disturbing and led me suffering from sleeplessness. I had to resort to sleeping pills for relief. Misinterpreting my actions as suicidal, my worried neighbours sent me to Caritas Hospital.

## A Community Filled with Humanity

Despite the unsettling safety concerns in Kai Liu, the neighbourhood was home to a close-knit community. My father was part of this tapestry. He ran a small business producing and selling silver pin noodles. His workday began early, setting up his gasoline

stove in the building's central stairwell to prepare the noodles. As soon as the cooking was done, the neighbours had their breakfast ready. Their tolerance [for the space he occupied] perhaps sprang from this arrangement.

My father was one of the first to make silver pin noodles in all of Hong Kong. His products were distributed to Sau Mau Ping, Lam Tin, and Kowloon City, with daily production reaching over 2000 cattles.

Our seven-story building lacked running water. Residents had to draw water from a hose in the central stairwell. Shared kitchens and bathrooms were the norm, and you'd have to get used to showers without curtains or doors.

The nearby nullah, usually barren and dry, only filled with water during tidal influxes or when water ran down the hills. These periods of water flow attracted local children to play.

Our neighbours grew vegetables on the surrounding hills. We rarely had to buy produce; we could simply pick a bunch while pass. This spirit of sharing was what defined our community in Kai Liu.

I started my business with a soy milk shop inside our building. I would also pick herbs from the hill, grinding and mixing them with ice and sugar to make iced tea. My customers consisted mostly of construction workers. But with growing concerns about hygiene, I ceased selling tea. Instead, I started selling desserts and silver pin noodles. As the income from this wasn't sufficient to support my three children, I eventually opened a *cha chaan teng*.

Back then, we allowed neighbours to run a tab. We also encountered drug users from time to time. I ensured that my staff served them food but we never gave them any money.

「我希望將來條渠變成河後，河邊會有樹、有樹蔭，有可以坐低休息嘅地方。」

*'I dream of the nullah evolving into a river, complete with shaded walkway lined with trees, offering spaces for relaxation.'*

## 渠水雖臭

### 仍吸引孩子大叔去撈釣

七、八十年代，即我細個嗰陣，我住喺秀茂坪，嗰時整個區內嘅文娛設施唔多，只有觀塘泳池，仲有一個波地，我就經常會去觀塘泳池游水。當時個泳池好殘舊，冇依加咁大，泳池外面有好多小食檔，游水前後都會經過條渠，勁臭，一定要掩鼻。

有時會見到有啲嘍仔會爬落條渠玩水，尤其係男仔，好百厭。我自己就冇爬過落去，不過有時會見到啲細路同埋啲大叔會釣或者撈一啲嘢上來，應該係生物嘍嘍。由麗港城一直至泳池嘅渠邊，不時都會見到有人喺條渠玩。

## 傳統節慶時

### 雞寮有賣藝表演

我記得以前泳池旁邊都係七層大廈，嗰一帶叫雞寮，治安唔係幾好，不時有人打交。通常我哋游完水就會走，會避開唔走入雞寮，不過一到有傳統節慶嘅時候，雞寮一帶就好熱鬧。

例如盂蘭節嘅時候，大約係七十年代中後，我見過有人玩神打，也見過人喺球場割蛇，好好玩！當時啲「賣藝人」喺球場內，由布袋拎條蛇出來，再用刀將蛇頭割開、片蛇肉，好多師奶買。最後賣藝人會拎埋個蛇膽出來賣。

## 但願渠水變河水

相反，敬業里那邊條渠係工廠區，八、九十年代那邊有好多紗廠，非常污糟，空氣好差。嗰時環境好差，唔似依加咁乾淨，唔會無端端過去行街 shopping 嘅，一定係有需要先會進入工廠區，例如返工、搵幫工。我讀中學時不時會去工廠區，因為要向同學家人嘅廠借衣車用。所以一般人平時唔會去條明渠邊散步嘅，都係有目的而去嘅。

所以我希望將來條渠變成河後，河邊會有樹、有樹蔭，有可以坐低休息嘅地方，唔一定係咖啡店，有休憩公共空間就可以喇。亦希望未來嘅河水會更乾淨，可以令人有衝動想跳落去玩水。

觀塘舊街坊  
舞台佈景及服裝設計師  
章佩佩



Former Kwun Tong Resident  
Stage Set and Costume Designer  
Cheung Pui-pui

## The Pungent Nullah: An Unconventional Playground

In the 1970s and 80s, my childhood was spent in Sau Mau Ping, an area with limited recreational facilities at that time. Our options were restricted to the Kwun Tong Swimming Pool and a football ground. I made frequent visits to the pool, although it was very run-down and modest in size compared to today's standard. There were plenty of food stalls outside the pool. However, we always had to pass a smelly nullah to get there. The smell was so strong that we would cover our noses with our hands.

Even with the bad smell, it wasn't rare to see kids, especially adventurous boys, playing in the nullah. I personally never went in, but often saw kids and even adults fishing or looking for water creatures. This stretch of the nullah, extending from Laguna City to the segment near the pool, served as an impromptu playground for the locals.

## Festive Celebrations in Kai Liu

Next to the swimming pool was a cluster of seven-story buildings, a neighbourhood known as Kai Liu. Notorious for its frequent street brawls and safety concerns, this area was where we would stay away after finishing our swimming sessions. However, Kai Liu would transform into a lively hub during traditional festivals. One of my most vivid memories is from

the mid-70s during the Hungry Ghost Festival, when the local playground turned into a performance space, with performers engaged in shamanistic dances and even performed snake slayings. It was fun! Performers would pull out a snake from a bag, behead it, and slice the meat, which many local housewives would eagerly purchase. The spectacle typically concluded with the selling of the snake's gallbladder.

## Wish: From Industrial Past to Riverine Future

The stretch of the nullah near King Yip Lane was within an industrial zone, once home to numerous textile factories in the 1980s and 1990s. The area was dirty and the air quality was poor. It was not a place for leisurely visits or shopping but rather for necessary errands, work, or seeking for assistance. As a high school student, I had a reason to frequent this industrial zone. A classmate's family operated a factory there, and I needed to use their sewing machines.

Looking ahead, I dream of the nullah evolving into a river, complete with shaded walkway lined with trees that provides spaces for relaxation. It would be nice to have a riverside café, but it's not a necessity; a public space for people to chill would suffice. Additionally, I also hope the water will be clean enough to invite people to swim and enjoy themselves.

「細個搭校車入麗港城之前  
會經過翠屏河，  
我成日會睇下有冇雀仔。」

*'I'd occasionally spot birds  
visiting the river during my school bus  
trips to Laguna City'*

麗港城街坊  
醫護人員  
Hugo Fong

Laguna City Resident and  
Healthcare Worker  
Hugo Fong



### 翠屏河默默陪伴成長

我哋一家人都住喺麗港城，細個時唔常去翠屏河嗰邊，因為嗰邊主要係工業區。不過周末時阿爸阿媽都會帶我哋去嗰邊食嘢，主要係觀塘廣場嗰邊。到我大個時就經常會經過翠屏河，因為要去海濱跑步，而且後來嗰邊已經起咗好多新嘅商場，都會去食嘢。

細個時條河有啲污糟，好多同學都話條河好臭，但我有鼻敏感，我就聞唔到。有時有雀仔飛落條河，細個搭校車入麗港城之前會經過翠屏河，我成日會睇下有冇雀仔，但通常見到垃圾多。

對條河本來冇咩難忘經歷，不過如果唔係你哋問起，我都唔發現原來翠屏河係咁長。我去海濱跑步會經過翠屏河，去 APM 和觀塘廣場又會經過翠屏河；中學時去翠屏邨盲人中心做義工，又會經過佢；新年同家人去翠屏邨行花市，亦會經過翠屏河，原來我嘅生活同條河都幾息息相關。

### 期待河畔有更多休憩空間

同細個比我覺得條河係變好咗。細個時淨係覺得嗰邊係工廠區，我細個時個印象只有觀塘廣場，其餘都係工業區。依加就多咗好多唔同嘅嘢。

其實翠屏河附近嘅行人就唔算多，但搭車的話，尤其要經成業街到開源道時，就好塞好塞，有時的士司機會叫我落車自己行過去會快啲。

因為觀塘真係好繁忙，多人又多車，如果喺河邊有一個休憩空間，可以俾人 relax，小朋友可以玩，做吓運動，或者坐喺度睇下書，咁就好了。

### Tsui Ping River - The Quiet and Gentle Companion

I live with my family in Laguna City, a stone's throw away from the Tsui Ping River. During my childhood, the industrial setting of the river meant it didn't play a big part in our lives. However, this began to change on weekends when my parents took us for meals around Kwun Tong Plaza. And it was only in my later years that my encounters with the Tsui Ping River have become more frequent. It formed a part of my jogging route to the seafront, and with new shopping malls popping up around its bank, it has become our go-to spots for dining out.

Looking back, the river was quite an eyesore. Fellow classmates often grumbled about its unpleasant smell. However, my nasal allergies, leading to a poor sense of smell, ironically made me immune to that discomfort. I'd occasionally spot birds visiting the river during my school bus trips to Laguna City, but sadly, I saw litter more often.

Though there are no specific highlights in my encounters with the river, I now realise that this waterway, which is quite lengthy, has a constant presence in my everyday life. Whether it is my jogs

along the seafront, shopping trips to APM and Kwun Tong Plaza, or our family's annual visit to the Tsui Ping Estate flower market for the Lunar New Year, or even back in my secondary school years that I volunteered at the Estate's blind centre – the river has always been there.

### A Vision: Restoring the River for People

The river has undergone substantial improvements. When I was small, I saw it as a part of the industrial landscape, with Kwun Tong Plaza the only notable attraction in my mind. Now, the area has much more to offer.

Pedestrian traffic around Tsui Ping River is quite manageable, but vehicular congestion, particularly between Shing Yip Street and Hoi Yuen Road, is often a headache. There have been instances when taxi drivers suggested I might reach my destination faster on foot.

Kwun Tong is an extremely busy place. Having a riverside leisure space would be an excellent addition. A place where children can play, people can work out, or simply enjoy a quiet moment with a book could offer a much-needed escape from the constant buzz of the area.

渠務署

的前半生

渠務署

渠務署的  
前半生

The Early Years of  
the Drainage Services Department

# 清流濁流 也是渠務

## Keeping Our Waterways Clean

如果道路是覆蓋全城、與市民生活息息相關的網絡，那河道和渠道就是另一張網，它們或明或暗地分佈甚至貫穿全城，既肩負都市排洪的天然任務，亦是都市環境中不可或缺的部份，而負責管理這張網的，就是渠務署。

Just as an intricate network of roads links up the city and connects with people's lives, so do rivers and nullahs. These waterways, whether open or hidden, weave and penetrate through the city. They shape not only the cityscape, but also form an integral part of urban flood management. The Drainage Services Department (DSD) plays a vital role in maintaining the seamless operations of this water-based network.

1880 年間太平山區  
Tai Ping Shan District in 1880s



## 早年對抗瘧疾和鼠疫

渠務署雖名為渠務，管的並不只是「濁水」，很多時與「清水」的關係也很密切。它經過數度變身，由 1891 年最初政府設立的「水務及渠務分部」，至翌年更名為「水務辦事處」。在二十世紀初，渠務工作再次分拆出來，成為獨立的「渠務辦事處」，負責建造污水及雨水渠的擴展工程，以及對抗瘧疾的明渠工程等等，當時「渠務辦事處」的主要職能是應對公共衛生及健康問題，原因是香港開埠之初，衛生情況惡劣，尤其在維多利亞城中華人勞工聚居的太平山區（即今天上環太平山街一帶），無論排污、排水及通風系統也欠奉，成為藏污納垢之所。各種傳染病尤其是鼠疫因而自 1894 年開始大爆發，並在之後 30 多年間纏繞香江。直至 1923 年，香港才正式步出鼠疫陰霾。

## Early Days of Combating Malaria and Bubonic Plague

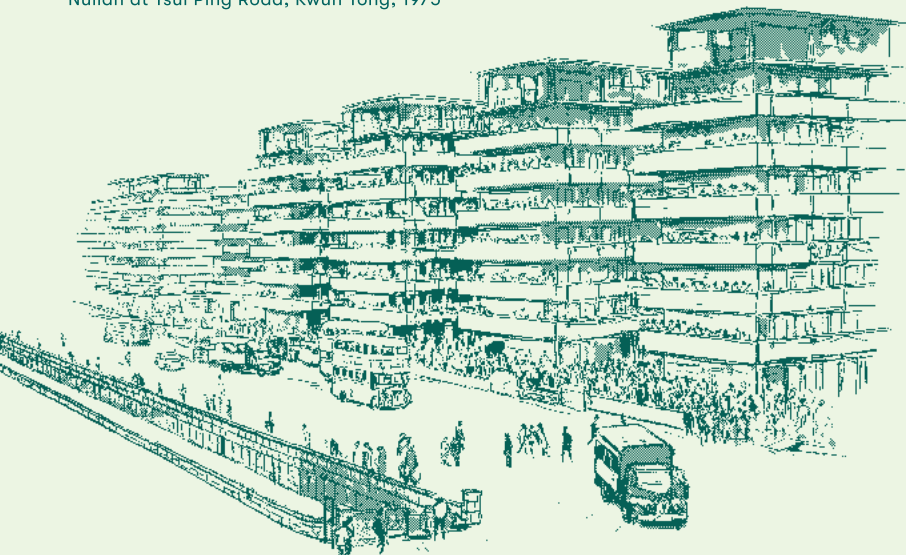
The Drainage Services Department (DSD), by virtue of its name, is entrusted with a broad mandate on management of wastewater and also stormwater. The department has undergone several changes since its inception in 1891 as the government's Water and Drainage Sub-department. In the following year, it was renamed the Waterworks Office. In the early 20th century, the Drainage Section under the Waterworks Office was reconstituted into the Drainage Office, which was established to take charge of the construction of all extensions to sewers and stormwater drains, as well as nullah drainage in connection with anti-malarial work. The principal function of the Drainage Office was to tackle public sanitation and the health problems of the community. This was necessitated by the insanitary and unhealthy conditions during Hong Kong's early days, particularly in the Tai Ping Shan District of the Victoria City (now around Tai Ping Shan Street in Sheung Wan) where the Chinese labourers lived. With poor sewage, drainage, and ventilation systems, it was a hotbed for filth and disease. Among the outbreak of various infectious diseases in 1894, the bubonic plague exerted terrible impact on Hong Kong for 30 years. It was not until 1923 when the epidemic ceased to attack.

## 二戰前的渠務建設

由於鼠疫的染疫死亡率超過 90%，政府不得不推行嚴厲的應對措施，包括清拆太平山區，並動工興建一條由堅巷伸延至荷里活道的雨水渠。至二十世紀初渠務辦事處成立後，其工作為設計及建造污水及雨水渠的擴展工程；實施與抗瘧疾相關明渠工程；維持水井及明渠供水；維修及清潔污水渠及化糞池等等。

至日治時期，基本上香港的所有大型工程（除擴建機場外）已停頓，雖然當時在政府轄下的「民治部」仍設有「渠務署」，但期間並無新的渠務建設項目。

1975 年的觀塘翠屏道明渠  
Nullah at Tsui Ping Road, Kwun Tong, 1975



## Drainage Infrastructure Before World War II

With a mortality rate of over 90%, the government was compelled to take drastic actions to combat the bubonic plague. These actions included the dismantling of the Tai Ping Shan District and the construction of a stormwater drain running from Caine Lane to Hollywood Road. With the establishment of the Drainage Office in the early 20th century, its responsibilities included designing and building extensions to sewers and rainwater drains, managing nullah drainage in connection with anti-malarial work, maintaining water supplies from wells and nullahs, and ensuring the upkeep and cleansing of sewers and septic tanks.

During the period of Japanese Occupation, there was practically no new infrastructural development, with the exception of the extension of the airport. Hong Kong's drainage services also inevitably experienced the same situation, even though the home affairs bureau of the then government also had a department looking after drainage matters.

## 戰後的污水建設

二戰結束後，「渠務辦事處」恢復運作，其中最迫切又跟排污問題關係最直接的，就是覆蓋明渠工程。1950 年代，政府開展覆蓋明渠工程。由於多數明渠寬闊，而且形狀均呈長方形，對往來路面的車輛和行人皆有所影響，所以 1950 年代中期政府開始覆蓋明渠，將明渠改為暗渠，主要目的是緩解交通擠塞問題。

1954 年年底，政府決定發展觀塘，成為其中一個衛星城市，所以在 1958 年，政府決定處理觀塘區的明渠，翠屏河就是當中重要的一環，其重要的程度，在當時的整個九龍東中大概僅次於啟德明渠。

1960 年代起，政府開始開展渠務環保工程，以控制水污染問題，1970 年代開始處理河溪污染，1971 年開始興建污水處理廠及改善維港水質，可見在數十年間，從住宅區至郊區及維港，處理排污及水污染問題均投放大量資源。1989 年，政府發表《白皮書：對抗污染莫遲疑》，建議將當時土木工程署轄下渠務部與機電工程署的一些科部，合併成渠務署，處理水污染問題，主要職責是管理污水收集系統和雨水排放系統。

## Post-War Sewage Infrastructure Development

Following the end of World War II, the Drainage Office was reinstated. The decking and culverting of open nullahs was top on the agenda to tackle sewage disposal problems. The nullahs were often wide in width and rectangular in shape, which made their presence tremendously inconvenient to traffic, both vehicular and pedestrian. Since the mid-1950s works were implemented steadily, and many nullahs were either decked or culverted, greatly relieving the traffic congestion caused by them.

At the end of 1954 the government reached a decision to develop Kwun Tong as one of the satellite cities. Accordingly, in 1958, the government resolved to address the issue of open nullahs in the Kwun Tong district, with Tsui Ping River being a crucial component. Its significance was second only to the Kai Tak Nullah in the entire East Kowloon during that time.

Starting from the 1960s, the government undertook a series of drainage and environmental projects aimed at tackling water pollution. In the 1970s, the attention of the government was drawn to the problem of stream pollution; in 1971, sewage treatment plants were commissioned and measures to improve the water quality of Victoria Harbour were taken. Throughout those decades, the government allocated substantial resources to tackle sewage problems and water pollution, covering residential areas, countryside, and the Victoria Harbour. *The White Paper: Pollution in Hong Kong — A Time to Act*, issued by the government in 1989, proposed the establishment of the Drainage Services Department (DSD) by combining the Drainage Works Division of the Civil Engineering Services Department (CESD) with part of the Electrical and Mechanical Services Department (EMSD), to address the issue of water pollution. The key responsibilities of this new Department are to manage the sewerage and stormwater drainage systems.



# 翠屏河 新動向

Tsui Ping River Updates



# 為翠屏河「通波仔」 行人天橋改建工程

Modifying the footbridge to enhance  
Tsui Ping River's water flow

## 點解要拆咗 舊行人天橋的斜道？

以前，每逢黑雨，翠屏道便很容易水浸，其中一個原因就是這條斜道座落在翠屏河正中，影響水流，造成樽頸。因此，活化翠屏河其中一個重點工程就是把這條行人天橋斜改道，才能為河道「通波仔」，移除樽頸位置，加強排洪的能力。



## Why was the old ramp of the footbridge removed?

Heavy rainstorms used to cause serious flooding in Tsui Ping Road, and a key factor exacerbating the problem was the old ramp of the footbridge. Positioned right atop the river, the ramp formed a hydraulic bottleneck, impeding the proper flow of water. As a result, rerouting the ramp has emerged as a key component of the Revitalization of Tsui Ping River project, not only to ensure the bottleneck in the channel is removed and the water flow enhanced, but also to fortify the river's capacity of flood control.



## 斜道遷移三部曲

### 1) 建造新橋台

在遷移行人天橋斜道前，工程團隊要先為新的天橋斜道建造新橋台，連接橋身與地面行人路。

### 2) 建造新橋墩

除了新橋台外，橋墩也是支撐橋身不可或缺的一環。

### 3) 最終回：吊上橋身

將已預先造好的三部份橋身，逐個吊至新的橋台及橋墩上，新天橋斜道結構便大功告成！

## Three-Tiered Approach to Ramp Relocation

### 1) Construction of New Abutment

Prior to rerouting the ramp, the project team erected a new abutment to join the new ramp to the existing footbridge deck and the pavement.

### 2) Building New Piers

In addition to the abutment, new piers were built as essential supporting structures to the new footbridge deck.

### 3) Final Step: Lifting the Bridge Deck

The three pre-assembled deck segments of the bridge were lifted one by one onto the new abutment and piers, thereby completing the new footbridge ramp.

## 翠屏河的視覺元素 工程進行中也賞心悅目

### Visual Delights of the Revitalization

雖然目前活化翠屏河的工程仍是進行式，但只要路過現在的翠屏河畔，一定會發現一些色彩鮮艷、內容有趣的大幅圍板和旗幟，預告了翠屏河活化後的新氣象。

工程本身是一些很理性、機械化的東西，而現在的圍板和旗幟上的視覺形象，則以較感性的方法表達翠屏河的模樣，並把未來有份享用翠屏河各類人士，包括居民、上班族、從事商業或工業的街坊，把他們的故事與觀塘這個社區連結起來。

The Revitalization of Tsui Ping River project is still in progress. However, anyone passing by the current river will already encounter brightly coloured, engaging hoardings and banners. These serve as a vivid preview, signalling the new look of the river after its transformation.

The construction itself is a matter of precision and mechanised operations, but the visual images on the hoardings and banners offer an artistic representation of the revitalization in an emotional way. They tie in the stories of those who will enjoy the Tsui Ping River in the future, including residents, office workers, and local people involved in commerce or industry, with the Kwun Tong community.





這些視覺形象中，其中一個角色就是「翠屏雀」，牠是以不時到訪翠屏河的小白鷺為原型，如今成了翠屏河的「吉祥物」。此外，色彩也是活化翠屏河工程的重要視覺元素。通常，和水有關的顏色是藍色和綠色，但翠屏河也用上了不同顏色，去表達一條河的不同功能和面向。例如翠屏河近海濱的位置可以見到日落，就用橙色；在未來的智能水閘處用上紫色，表示一些動態和變化的元素。

色彩是最容易引發人類好奇心的媒介之一，可以引起人有興趣去觀察，之後再去了解，而不是匆匆忙忙走過就算。我們希望翠屏河的顏色、視覺元素和文字，可令大家與水更為親近，並用新的角度盼待這片新的河景。

Among these visual elements, one character is particularly noticeable – the Tsui Ping Birdie, a mascot modelled after the Little Egret often spotted at Tsui Ping River. Moreover, colour plays a pivotal role in the visual identity of Tsui Ping River project. While water is typically represented by blue and green, this initiative employs a diverse colour palette to signify different aspects and features of the river. For example, orange is used to denote areas near the seaside where one can see the sunset, whereas purple is applied in the site designated for a future smart water gate, symbolising dynamic elements and changes to come.

Colour is one of the mediums that can most easily spark human curiosity. It encourages observation, leading to a deeper understanding, instead of merely passing by in haste. We hope that with these colours, coupled with the visual elements and narratives, everyone can feel a closer connection to the water and look forward to the new riverscape from a fresh perspective.

## 恢復河川生命力 翠屏河畔想像企劃

Tsui Ping River  
Community Workshop -  
Reimagining Our Community's Riverfront

# MaD 創不同學院

## Make a Difference (MaD) School



# 翠屏河

## Tsui Ping River

如果要令一條其貌不揚的「大坑渠」恢復生氣，大家可以怎樣做？又如果有一條河流是屬於社區的，作為社區的一份子，大家又希望一個理想的河畔空間是怎樣的？

現在觀塘就有一條這樣的水道，讓大家盡情發揮創意。位於敬業街的明渠，一直與社區相伴，肩負排洪要務。但河流不只是排洪，如今正在進行活化工程的河道，需要大家的想像力，才能得到更豐盛的第二生命。因此，工程團隊與創不同協作 (MaD) 於 2021 年 10 月至 2022 年 1 月期間，合作舉辦「在地研習室 | 翠屏河畔想像企劃」，作為“創不同”學院的年度重點節目。一連八節，由 2 Square Metres 的園境師及渠務署的工程師，帶領大家了解河道活化和社區設計，並聽取持份者的意見，為建設一個更舒適更怡人的河畔空間邁出一步。

How might we breathe new life into an unassuming 'Big Nullah'? If a river is an integral part of a community, as part of that very community, how would you envision an ideal riverside space?

Kwun Tong is home to such a waterway, a place for everyone to unleash their creativity. This open nullah on King Yip Street has long been a vital part of the community, carrying the crucial role of flood management. But the role of a river extends beyond that. Undergoing a revitalization process at the moment, this waterway is in need of the community's collective imagination to fully realise its potential. Thus, from October 2021 to January 2022, the project team partnered with Make a Difference (MaD) School to present the Studio In-situ - Tsui Ping River Community Workshop as the annual highlight. Across eight sessions, landscape architect from 2 Square Metres and engineers from the Drainage Services Department (DSD) guided the participants to understand the concepts of river revitalization and community design. They also engaged with the views of stakeholders, all in the pursuit of creating a riverside space that is more welcoming and enjoyable.

## 河務關渠務署事嘍!

渠務署負責的不只是渠務，還有河務！渠務署以「河畔城市」的概念，推行活化河道項目，為公眾提供高質素的公共空間。在「翠屏河畔想像企劃」中，渠務署工程師團隊為參加者介紹河畔城市的概念，並帶大家參觀現正進行活化工程的翠屏河。



照片來源：創不同協作  
Image Credit: Make A Difference Institute

## Managing Rivers is Also Part of the DSD's Work

The Drainage Services Department (DSD) is not only responsible for drainage, but also river management! Adopting the concept of 'Rivers in the City', the DSD promotes river revitalization projects to provide the public with high-quality public spaces. In the Tsui Ping River Community Workshop, the team of engineers from DSD introduced participants to the concept of Rivers in the City and led them on a tour of Tsui Ping River, which is currently undergoing revitalization.

## 真人圖書館之觀塘街坊話你知

在八節活動中，參加者首先從自己的觀察去了解社區。街坊是社區重要的持份者，因此企劃特地誠邀數位觀塘街坊擔當「智囊團」，與參加者分享生活經驗及對社區環境的想法，助他們從街坊們的角度去了解社區，進而找出及分析區內的問題。



照片來源：創不同協作  
Image Credit: Make A Difference Institute

## A Living Library: The Voice of Kwun Tong Neighbours

Throughout the eight sessions of activities, participants first gained an understanding of the community through their own observations. Recognising the significant role of local residents as key stakeholders in the community, the project specifically invited Kwun Tong locals to serve as 'advisory groups'. They shared their lived experiences and valuable insights about the community environment with the participants, helping them to understand the community from the residents' perspective. This allowed them to pinpoint and analyse issues within the district.

## 落區考察 變身「社區設計師」

25 位參加者化身為「社區設計師」，在翠屏河一帶實地考察。各組就社區、環境、河畔生活、城市韌性和社區經濟五個主題，構想各有特色的創新方案，並在網上收集第一輪意見。



照片來源：創不同協作  
Image Credit: Make A Difference Institute

## Fieldwork: Becoming 'Community Designers'

25 participants transformed into 'community designers' and conducted field studies around the Tsui Ping River. They split into groups and brainstormed innovative plans for 5 themes: community, environment, living by river, urban resilience, and local economy. They also gathered initial feedback online.

## 落手落腳 砌模型做測驗

聽取意見後，各組深化方案雛型，以模型、街頭訪問等形式實測方案成效，並收集更多街坊意見。方案雛型設計接近成熟，就是動手製作的時候，把想像用行動實踐出來。



照片來源：創不同協作  
Image Credit: Make A Difference Institute

## Turning Ideas to Life: Prototyping and Testing

After getting the feedback, each group refined their prototype plans. They tested the effectiveness of their plans through models, street interviews, and collected further feedback from locals. When the prototype design approached maturity, it was time to put it into practice and turn imagination into action.

## 五個翠屏河的可能性

經過四個月的努力，一眾「社區設計師」精心炮製的五個方案於翠屏河花園展出：

### Five Possibilities for the Tsui Ping River

After four months of hard work, the 'community designers' meticulously prepared five plans which were unveiled in the Tsui Ping River Garden:



1. 《社區搵食之旅》  
'Kwun Tong Food Hunt'

2. 《鬆一 Zone》  
'Zone<sup>2</sup>'

3. 《觀塘靈感扭蛋機》  
'Kwun Tong Inspirations Gashapon Machines'

4. 《爬寵連結社》  
'Reptiles Connective'

5. 《流動休閒站》  
'Fun on the Move'

照片來源：創不同協作  
Image Credit: Make A Difference Institute

## 1 《社區搵食之旅》

團隊創作網上「搵食地圖」，並在區內不同角落放置資訊板，吸引市民尋訪翠屏河周邊的美食。

### 'Kwun Tong Food Hunt'

The 'Kwun Tong Food Hunt' team developed an online map for foodies and placed information boards across the district to encourage people to explore the culinary delights around the Tsui Ping River.

## 2 《社區搵食之旅》

在翠屏河畔的空間增設有可移動的車鞍凳和創意屏風，甚至可借用各種遮太陽裝置、健身器材或小樂器，讓公眾創造自己的舒適區域。

### 'Zone<sup>2</sup>'

'Zone<sup>2</sup>' added portable seating and innovative screens to the space along the Tsui Ping River, which can even be supplemented with various sun-shielding devices, fitness equipment, or small musical instruments, creating comfortable zones for the public to enjoy.

## 3 《觀塘靈感扭蛋機》

「社區設計師」設計了兩部扭蛋機，你就可「扭」出觀塘靈感——「福利蛋」提供附近商店的優惠情報、「故事蛋」發掘觀塘有趣故事、「打卡蛋」提供觀塘最新打卡點，鼓勵大家探索翠屏河社區。

### 'Kwun Tong Inspirations Gashapon Machines'

'Kwun Tong Inspirations Gashapon Machines' – 'community designers' came up with two gashapon machines. The Welfare Gashapon offers discounts from local businesses; the Story Gashapon shares interesting stories of Kwun Tong; while the Check-in Gashapon provides the latest check-in points around Kwun Tong, encouraging everyone to explore.

## 4 《爬寵連結社》

靜態又有特色的小型爬蟲類寵物，推動人與人之間的聯繫，建立社區韌性。

### 'Reptiles Connective'

'Reptiles Connective' uses quiet and unique reptile pets to promote connections between people and build community resilience.

## 5 《流動休閒站》

在翠屏河畔提供各樣休閒玩意，包括樂器、禪繞畫、漂書等，令河畔生活更多元化。

### 'Fun on the Move'

'Fun on the Move' provides a selection of leisure activities along the Tsui Ping River, including musical instruments, Zen paintings, book exchange, and more, making the activities available along the riverside more diverse and enjoyable.

# 井柵藝術 Grate Art × 翠屏河 Tsui Ping River

## 用瓷磚藝術 宣揚愛護河流

Promoting River Care  
through Ceramic Tile Art



照片來源：海洋復原聯盟  
Image Credit: Ocean Recovery Alliance

有沒有想過保護河道其實也能為保護海洋出一分力？只要河流上零垃圾，就可以大大減少垃圾隨河水流入海洋的機會。海洋復原聯盟就發起了名為「井柵藝術」的裝置藝術項目，以井柵有阻隔垃圾的作用為概念，鼓勵藝術家和大眾發揮創意，在社區宣揚保護海洋的訊息。

Did you know that protecting our rivers is crucial to protecting our oceans? By keeping our rivers clean and litter-free, we greatly reduce the chance of garbage flowing into the sea. The Ocean Recovery Alliance has launched an art initiative called 'Grate Art', based on the concept of drain grates preventing litter from entering waterways. This project encourages artists and the public to use their creativity to promote awareness about the importance of ocean conservation.

2022年6月，「活化翠屏河」工程團隊就與海洋復原聯盟合作舉辦「井柵藝術 @ 翠屏河」，在首輪的活動中，邀請了六位本地藝術家以「保護河道」作為主題，設計了一系列瓷磚，並安裝在翠屏河雨水渠附近，提醒市民保護河道和海洋，不要亂拋垃圾。

瓷磚以醒目的藍白色為主調，畫上可愛的構圖，當你在翠屏河畔散步時，就會發現它們的蹤影，記得放慢腳步，細心欣賞這片腳邊的風景。

In June 2022, the project team of Revitalization of Tsui Ping River joined forces with the Ocean Recovery Alliance to kick off the Grate Art @ Tsui Ping River. In the first phrase of the event, 6 local artists were invited to design a series of ceramic tiles with the theme of 'protecting the river'. These tiles were placed near the stormwater drain of Tsui Ping River, serving as a constant reminder to the public about the significance of safeguarding our rivers and oceans and avoiding litter.

The ceramic tiles are adorned with charming design in blue and white and can be found along the Tsui Ping River. As you take a leisurely stroll along the River, be sure keep an eye out for these tiles. Take a moment to slow down and appreciate the art beneath your feet.



照片來源：海洋復原聯盟  
Image Credit: Ocean Recovery Alliance



- |                                  |   |
|----------------------------------|---|
| 1.<br>Yucca Wong<br>@wong_yu_cca | 4.<br>Armechan<br>@armechan               |
| 2.<br>Livy Leung<br>@livyleunghn | 5.<br>Simple Bao<br>@simplebao            |
| 3.<br>&dear<br>@andearhk         | 6.<br>Nikki Cheung<br>@niknaknuadventures |



照片來源：海洋復原聯盟  
Image Credit: Ocean Recovery Alliance



照片來源：海洋復原聯盟  
Image Credit: Ocean Recovery Alliance

第二輪的活動是為中小學生為「井柵藝術 @ 翠屏河」活動舉辦瓷磚設計比賽，每位參賽者最多可以提交三幅作品。大會收到約 500 份極具創意的作品，並挑選出六款得獎設計。當中不少是觀塘區內學生，包括一位香港布廠商會朱石麟中學的同學，及三位天主教佑華小學同學。頒獎典禮亦分別於 2022 年 8 月 1 日及 5 日在學校講座活動當天進行。

獲選的設計已於 2022 年 9 月 25 日的「世界河川日」當天安裝在翠屏社區的街道上。而其他優秀作品也上載至網上合拼成數碼馬賽克拼圖與公眾分享。

The second phase of the event was a ceramic tile design competition that was open to primary and secondary school students. Each participant could submit up to three pieces of work. The competition received an overwhelming response, about 500 highly creative pieces, and 6 winning designs were selected. Among them were many students from the Kwun Tong district, including 1 student from the Hong Kong Weaving Mills Association Chu Shek Lun Secondary School, and 3 students from Our Lady of China Catholic Primary School. The award ceremonies were held during school events on 1 and 5 August 2022.

The winning designs from the competition were installed on the streets of the Tsui Ping River community on World Rivers Day, 25 September 2022. In addition to the winning designs, other exceptional entries were compiled into a digital mosaic puzzle and shared with the public online.



1. 楊溢 Yang Yi
2. 李嘉淇 Li Ka Ki
3. 林雪微 Lam Suet Mei
4. 盧欣沂 Lu Yan Yi
5. 陳梓燦 Chan Tsz Yau
6. 潘寶恩 Poon Po Yan



掃描瀏覽作品  
數碼馬賽克  
Scan for  
entries' digital  
mosaic puzzle

# 圖像索引

# Image Index



p.2 1969年觀塘油庫及沿海工業區一帶  
航空相片由地政總署提供  
© 香港特別行政區政府 參考編號 G17/2022

*Oil depot and industrial area adjacent to coastline in Kwun Tong, 1969  
Aerial photo from Lands Department  
© The Government of the Hong Kong SAR  
Reference no. G17/2022*



p.8 1979年觀塘一帶  
航空相片由地政總署提供  
© 香港特別行政區政府 參考編號 G17/2022

*Kwun Tong Area in 1979  
Aerial photo from Lands Department  
© The Government of the Hong Kong SAR  
Reference no. G17/2022*



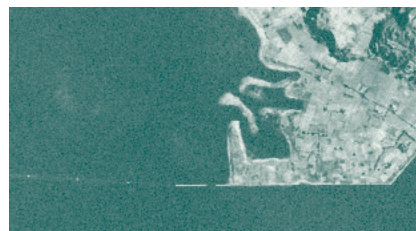
pp.14-15 1972年觀塘一帶  
航空相片由地政總署提供  
© 香港特別行政區政府 參考編號 G17/2022

*Kwun Tong area, 1972  
Aerial photo from Lands Department  
© The Government of the Hong Kong SAR  
Reference no. G17/2022*



p.19 1969年昔日油庫及茶果嶺一帶  
航空相片由地政總署提供  
© 香港特別行政區政府 參考編號 G27/2022

*Former oil depot and Cha Kwo Ling area, 1969  
Aerial Photo from Lands Department  
© The Government of the Hong Kong SAR  
Reference no. G27/2022*



p.6 1945年觀塘及茶果嶺一帶  
航空相片由NCAP / ncap.org.uk  
© HES. 及地政總署提供  
© 香港特別行政區政府提供

*Kwun Tong, Cha Kwo Ling and Yau Tong area, 1945  
Aerial photo from NCAP / ncap.org.uk  
© HES. and Lands Department  
© The Government of the Hong Kong SAR*



p.9 2004年觀塘及茶果嶺一帶  
航空相片由地政總署提供  
© 香港特別行政區政府 參考編號 G17/2022

*Kwun Tong and Cha Kwo Ling area, 2004  
Aerial photo from Lands Department  
© The Government of the Hong Kong SAR  
Reference no. G17/2022*



p.16 1964年大概由於暴雨及上游山泥傾瀉，大量泥沙湧入觀塘翠屏道明渠。」  
香港特區政府渠務署，《澆洪淨流 混混而立》，2019年版，相片由香港特區政府新聞處提供

*"Silt washed down to the nullah in Kwun Tong after heavy rains, probably due to landslips in the upstream area, in 1964. Such occurrence was not uncommon at the time."  
Drainage Services Department of the HKSAR Government, Sewerage and Flood Protection, Drainage Service 1841-2018, 2019 ed., Photo from Information Service Department, The HKSAR Government*



p.18 1972年「六一八」雨災後，東九龍翠屏道被傾瀉山泥覆蓋。」  
香港特區政府渠務署，《澆洪淨流 混混而立》，2019年版，相片由香港特區政府新聞處提供

*"On 18th June 1972, Tsui Ping Road in Kowloon East was buried under mudslide.",  
Drainage Services Department of the HKSAR Government, Sewerage and Flood Protection, Drainage Service 1841-2018, 2019 ed., Photo from Information Service Department, The HKSAR Government*



p.7 1959年馬游塘及觀塘一帶  
航空相片由NCAP / ncap.org.uk  
© HES. 提供

*Ma Yau Tong and Kwun Tong area, 1959  
Aerial photo from NCAP / ncap.org.uk  
© HES.*



p.11 1964年觀塘  
航空相片由地政總署提供  
© 香港特別行政區政府 參考編號 G17/2022

*Kwun Tong, 1964  
Aerial photo from Lands Department  
© The Government of the Hong Kong SAR  
Reference no. G17/2022*



p.17 1960年觀塘填海及工業區發展  
相片由香港特區政府新聞處提供

*Reclamation and development of the industrial area in Kwun Tong, 1960  
Photos from Information Service Department, The HKSAR Government*



pp.20-21 1963年裕民坊（左方）和觀塘道及觀塘工業區（右方）  
相片由香港特區政府新聞處提供

*View of Yue Man Square (left), and Kwun Tong Road and Kwun Tong Industrial Area (right), 1963  
Photos from Information Service Department, The HKSAR Government*

**出版機構**  
渠務署

**編輯**  
蔡劍虹  
鄒頌華

**藝術指導**  
蔡劍虹

**刊物設計**  
何佩珊  
王琬汶  
羅愷嵐

**人物故事插畫**  
Lup

**歷史研究**  
長春社文化古蹟資源中心

**活動策劃伙伴**  
創不同協作  
海洋復原聯盟

**翻譯**  
Metta Literary Consultancy

**Publisher**  
Drainage Services Department (DSD)

**Editorial**  
Kimhung Choi  
Chung Wah Chow

**Art Direction**  
Kimhung Choi

**Publication Design**  
Saki Ho  
Ashley Wong  
Mavis Lo

**Interview Illustration**  
Lup

**Historical Research**  
The Conservancy Association Centre for Heritage (CACHE)

**Event Partner**  
Make A Difference Institute  
Ocean Recovery Alliance

**Translation**  
Metta Literary Consultancy

**活化翠屏河**

**工程合約編號**  
DC/2019/08

**地址**  
九龍觀塘偉樂街6號，  
駐地盤總工程師寫字樓

**工程熱線**  
6088 9002

**電郵**  
pro@dc201908.com.hk

**網頁**  
www.tsuipingriver.hk

**顧問工程師**  
阿特金斯顧問有限公司

**承建商**  
利基 – 顯豐土木聯營

**Revitalization of Tsui Ping River**

**Contract No.**  
DC/2019/08

**Address**  
CRE's Site Office, No. 6,  
Wai Lok Street, Kwun Tong

**Hotline**  
6088 9002

**Email**  
pro@dc201908.com.hk

**Website**  
www.tsuipingriver.hk

**Consultant**  
AtkinsRéalis

**Contractor**  
Build King – Richwell Civil Joint Venture





 @TsuiPingRiver  @tsui\_ping\_river

2024 年 1 月編印  
Published in Jan 2024

©2024 版權屬香港特別行政區政府渠務署所有，未經許可不得複製、節錄或轉載  
Copyright ©2024 Drainage Services Department (DSD),  
The Government of the Hong Kong Special Administrative Region. All rights reserved.