

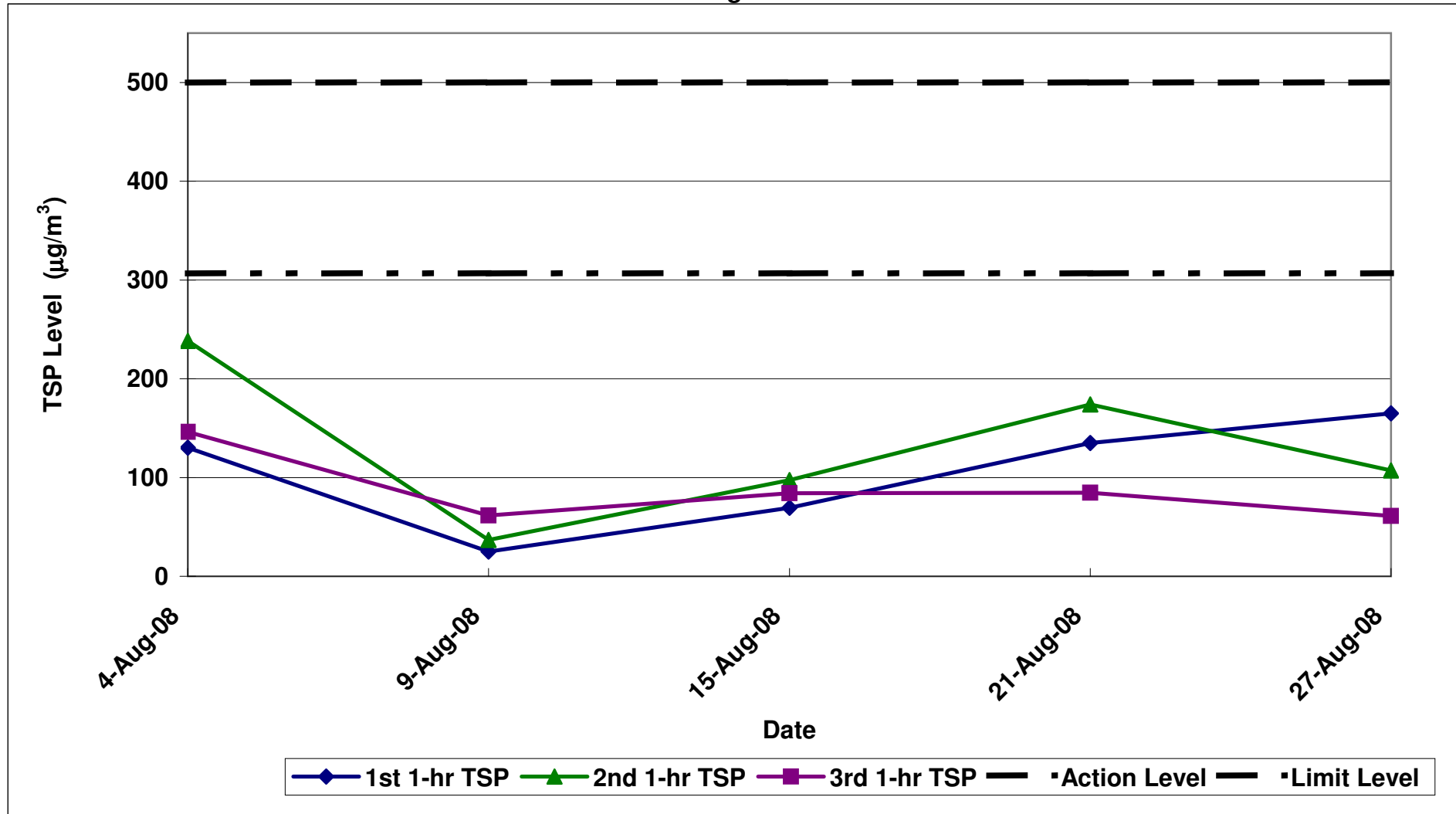
Contract No. DC/2007/12 - Design and Construction of Tsuen Wan Drainage Tunnel

Air Quality Impact Monitoring Results (1-Hour TSP)

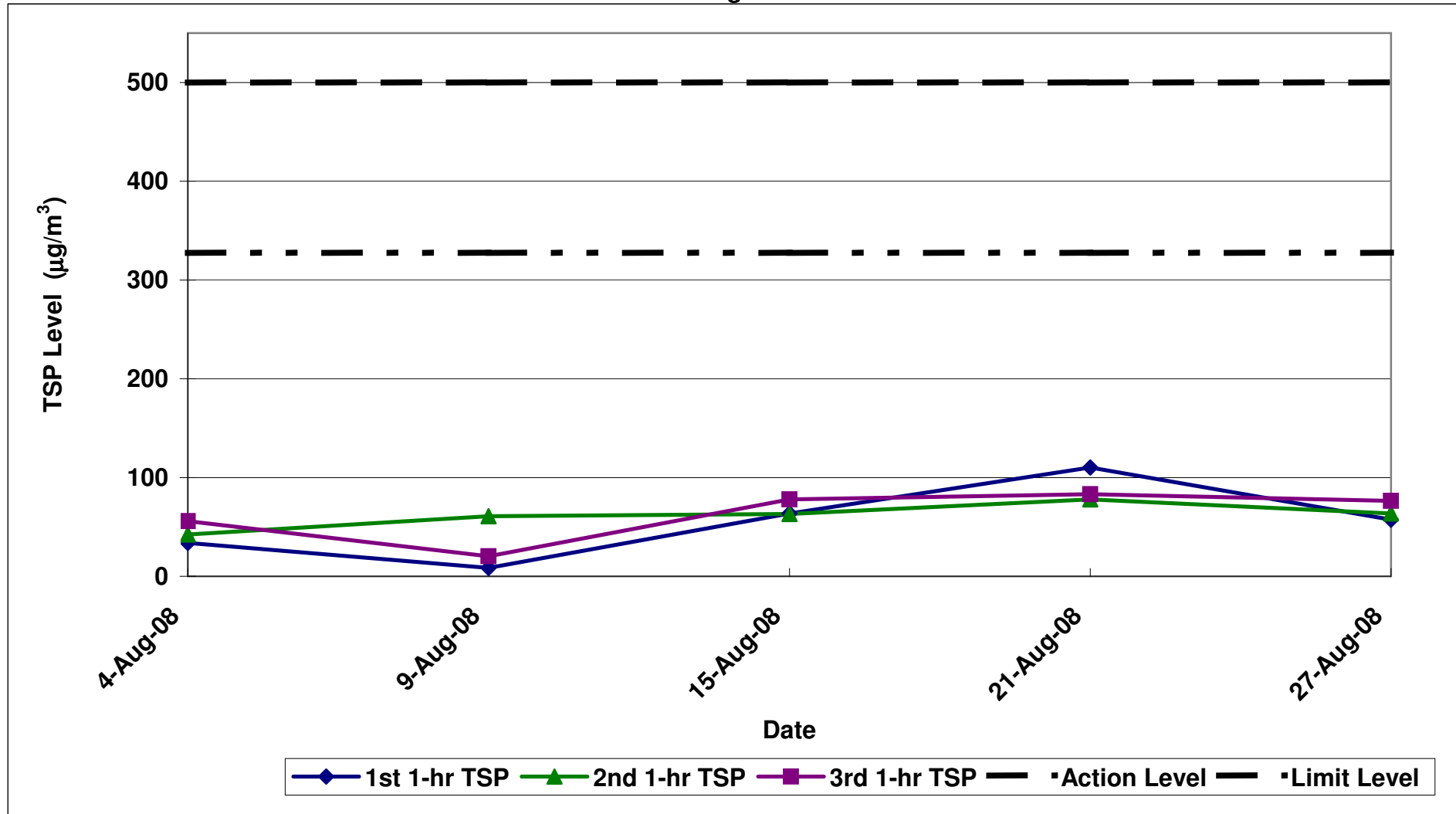
Location	Monitoring Date	Weather Conditions	Wind Speed with Direction (m/s)	Temp (°C)	Timer-I	Timer-F	Time (mins)	Flow-I (CFM)	Flow-F (CFM)	Flow-I (m³/min)	Flow-F (m³/min)	Flow-avg (m³/min)	Volume (m³)	Weight-I (g)	Weight-F (g)	Weight-diff. (g)	1-hr TSP (µg/m³)	Average 1-Hr TSP (µg/m³)	Action/Limit Levels (µg/m³)	Observation / Site Condition	Remark
Sik Sik Yuen Ho Fung College - Intake (ASR1)	04-Aug-08	Fine	0.4E	31	559039	559139	60.0	39	39	1.00	1.00	1.00	59.97	2.8559	2.8637	0.0078	130.1	306.6/500	N/A		
		Fine	0.4E	31	559139	559239	60.0	39	40	1.00	1.01	1.01	60.40	2.8691	2.8835	0.0144	238.4				
		Fine	0.4E	31	559239	559339	60.0	40	40	1.01	1.01	1.01	60.83	2.8182	2.8271	0.0089	146.3				
	09-Aug-08	Fine	0.7E	32	559339	559439	60.0	39	39	1.00	1.00	1.00	59.97	2.8032	2.8047	0.0015	25.0				
		Fine	0.7E	32	559439	559539	60.0	39	39	1.00	1.00	1.00	59.97	2.7826	2.7948	0.0022	36.7				
		Fine	0.7E	32	559539	559639	60.0	39	39	1.00	1.00	1.00	59.97	2.8739	2.8776	0.0037	61.7				
	15-Aug-08	Sunny	0.4E	29	559639	559739	60.0	39	39	1.01	1.01	1.01	60.65	2.7778	2.7820	0.0042	69.2				
		Sunny	0.4E	29	559739	559839	60.0	39	39	1.01	1.01	1.01	60.65	2.7797	2.7856	0.0059	97.3				
		Sunny	0.4E	29	559839	559939	60.0	39	39	1.01	1.01	1.01	60.65	2.7725	2.7776	0.0051	84.1				
	21-Aug-08	Cloudy	0.6E	30	559939	560039	60.0	40	40	1.02	1.02	1.02	61.46	2.789	2.7973	0.0083	135.1				
		Cloudy	0.6E	30	560039	560139	60.0	40	40	1.02	1.02	1.02	61.46	2.7596	2.7703	0.0107	174.1				
		Cloudy	0.6E	30	560139	560239	60.0	40	40	1.02	1.02	1.02	61.46	2.7550	2.7602	0.0052	84.6				
27-Aug-08	Sunny	0.5E	30	560239	560339	60.0	39	39	1.01	1.01	1.01	60.65	2.7467	2.7567	0.0100	164.9					
	Sunny	0.5E	30	560339	560439	60.0	39	39	1.01	1.01	1.01	60.65	2.7469	2.7534	0.0065	107.2					
	Sunny	0.5E	30	560439	560539	60.0	39	39	1.01	1.01	1.01	60.65	2.7168	2.7205	0.0037	61.0					
Hong Hoi Chee Hong Temple - Intake (ASR3)	04-Aug-08	Fine	0.3E	32	527489	527589	60.0	40	40	0.99	0.99	0.99	59.17	2.8041	2.8061	0.0020	33.8	327.4/500	N/A		
		Fine	0.3E	32	527589	527689	60.0	40	40	0.99	0.99	0.99	59.17	2.7938	2.7963	0.0025	42.2				
		Fine	0.3E	32	527689	527789	60.0	40	40	0.99	0.99	0.99	59.17	2.7638	2.7671	0.0033	55.8				
	09-Aug-08	Sunny	0.4E	32	527789	527889	60.0	40	40	0.99	0.99	0.99	59.17	2.8349	2.8354	0.0005	8.4				
		Sunny	0.4E	32	527889	527989	60.0	40	40	0.99	0.99	0.99	59.17	2.8067	2.8103	0.0036	60.8				
		Sunny	0.4E	32	527989	528089	60.0	40	40	0.99	0.99	0.99	59.17	2.8466	2.8478	0.0012	20.3				
	15-Aug-08	Sunny	0.5E	29	528089	528189	60.0	39	39	0.97	0.97	0.97	58.28	2.7621	2.7658	0.0037	63.5				
		Sunny	0.5E	29	528189	528289	60.0	39	40	0.97	0.98	0.98	58.64	2.7732	2.7769	0.0037	63.1				
		Sunny	0.5E	29	528289	528389	60.0	40	40	0.98	0.98	0.98	58.99	2.7683	2.7729	0.0046	78.0				
	21-Aug-08	Cloudy	0.4E	30	528389	528489	60.0	40	40	0.98	0.98	0.98	58.99	2.7535	2.7600	0.0065	110.2				
		Cloudy	0.4E	30	528489	528589	60.0	40	40	0.98	0.98	0.98	58.99	2.7446	2.7492	0.0046	78.0				
		Cloudy	0.4E	30	528589	528689	60.0	40	40	0.98	0.98	0.98	58.99	2.7532	2.7581	0.0049	83.1				
27-Aug-08	Sunny	0.4E	30	528689	528789	60.0	38	38	0.96	0.96	0.96	57.57	2.7421	2.7454	0.0033	57.3					
	Sunny	0.4E	30	528789	528889	60.0	38	40	0.96	0.98	0.97	58.28	2.7671	2.7708	0.0037	63.5					
	Sunny	0.4E	30	528889	528989	60.0	40	40	0.98	0.98	0.98	58.99	2.7482	2.7527	0.0045	76.3					
Long Beach Gardens - Outfall (ASR8)	04-Aug-08	Cloudy	0.6E	29	552593	552693	60.0	38	38	1.08	1.08	1.08	64.71	2.836	2.8416	0.0056	86.5	336.6/500	N/A		
		Cloudy	0.6E	29	552693	552793	60.0	38	38	1.08	1.08	1.08	64.71	2.8558	2.8625	0.0067	103.5				
		Cloudy	0.6E	29	552793	552893	60.0	38	38	1.08	1.08	1.08	64.71	2.8234	2.8311	0.0077	119.0				
	09-Aug-08	Fine	0.5E	30	552893	552993	60.0	38	38	1.08	1.08	1.08	64.71	2.8587	2.8638	0.0051	78.8				
		Fine	0.5E	30	552993	553093	60.0	38	38	1.08	1.08	1.08	64.71	2.8801	2.8815	0.0014	21.6				
		Fine	0.5E	30	553093	553193	60.0	38	38	1.08	1.08	1.08	64.71	2.8532	2.8556	0.0024	37.1				
	15-Aug-08	Sunny	0.9E	29	553193	553293	60.0	38	38	1.03	1.03	1.03	61.59	2.8424	2.8479	0.0055	89.3				
		Sunny	0.9E	29	553293	553393	60.0	38	38	1.03	1.03	1.03	61.59	2.8853	2.8909	0.0056	90.9				
		Sunny	0.9E	29	553393	553493	60.0	38	38	1.03	1.03	1.03	61.59	2.8329	2.8360	0.0031	50.3				
	21-Aug-08	Cloudy	0.8E	30	583493	583593	60.0	38	38	1.03	1.03	1.03	61.59	2.7257	2.7322	0.0065	105.5				
		Cloudy	0.8E	30	583593	583693	60.0	38	38	1.03	1.03	1.03	61.59	2.7294	2.7356	0.0062	100.7				
		Cloudy	0.8E	30	583693	583793	60.0	38	38	1.03	1.03	1.03	61.59	2.7327	2.7378	0.0051	82.8				
27-Aug-08	Sunny	1.0E	30	583793	583893	60.0	38	38	1.03	1.03	1.03	61.59	2.7453	2.7479	0.0026	42.2					
	Sunny	1.0E	30	583893	583993	60.0	38	38	1.03	1.03	1.03	61.59	2.7637	2.7672	0.0035	56.8					
	Sunny	1.0E	30	583993	584093	60.0	38	38	1.03	1.03	1.03	61.59	2.7453	2.7479	0.0026	42.2					
Greenview Terrace - Outfall (ASR9)	04-Aug-08	Cloudy	0.8E	29	554293	554393	60.0	38	38	1.18	1.18	1.18	70.76	2.823	2.8245	0.0015	21.2	329.2/500	N/A		
		Cloudy	0.8E	29	554393	554493	60.0	38	38	1.18	1.18	1.18	70.76	2.8657	2.8747	0.0090	127.2				
		Cloudy	0.4E	29	554493	554593	60.0	38	38	1.18	1.18	1.18	70.76	2.8204	2.8273	0.0069	97.5				
	09-Aug-08	Fine	0.5E	30	554593	554693	60.0	38	38	1.18	1.18	1.18	70.76	2.8502	2.8539	0.0037	52.3				
		Fine	0.5E	30	554693	554793	60.0	38	38	1.18	1.18	1.18	70.76	2.8658	2.8689	0.0031	43.8				
		Fine	0.5E	30	554793	554893	60.0	38	38	1.18	1.18	1.18	70.76	2.8504	2.8525	0.0021	29.7				
	15-Aug-08	Sunny	0.7E	29	554893	554993	60.0	38	38	1.30	1.30	1.30	78.06	2.8352	2.8398	0.0046	58.9				
		Sunny	0.7E	29	554993	555093	60.0	38	38	1.30	1.30	1.30	78.06	2.8486	2.8530	0.0044	56.4				
		Sunny	0.7E	29	555093	555193	60.0	38	38	1.30	1.30	1.30	78.06	2.8461	2.8509	0.0048	61.5				
	21-Aug-08	Cloudy	0.6E	30	555193	555293	60.0	38	38	1.30	1.30	1.30	78.06	2.7361	2.7397	0.0036	46.1				
		Cloudy	0.6E	30	555293	555393	60.0	38	38	1.30	1.30	1.30	78.06	2.7452	2.7538	0.0086	110.2				
		Cloudy	0.6E	30	555393	555493	60.0	38	38	1.30	1.30	1.30	78.06	2.7313	2.7396	0.0083	106.3				
27-Aug-08	Sunny	0.7E	30	555493	555593	60.0	38	38	1.30	1.30	1.30	78.06	2.7446	2.7499	0.0053	67.9					
	Sunny	0.7E	30	555593	555693	60.0	38	38	1.30	1.30	1.30	78.06	2.7398	2.7452	0.0054	69.2					
	Sunny	0.7E	30	555693	555793	60.0	38	38	1.30	1.30	1.30	78.06	2.75	2.7530	0.0030	38.4					

Note:
 Italic font and yellow shaded indicates an exceedance of Action Level
 Bold font and red shaded area indicates an exceedance of Limit Level

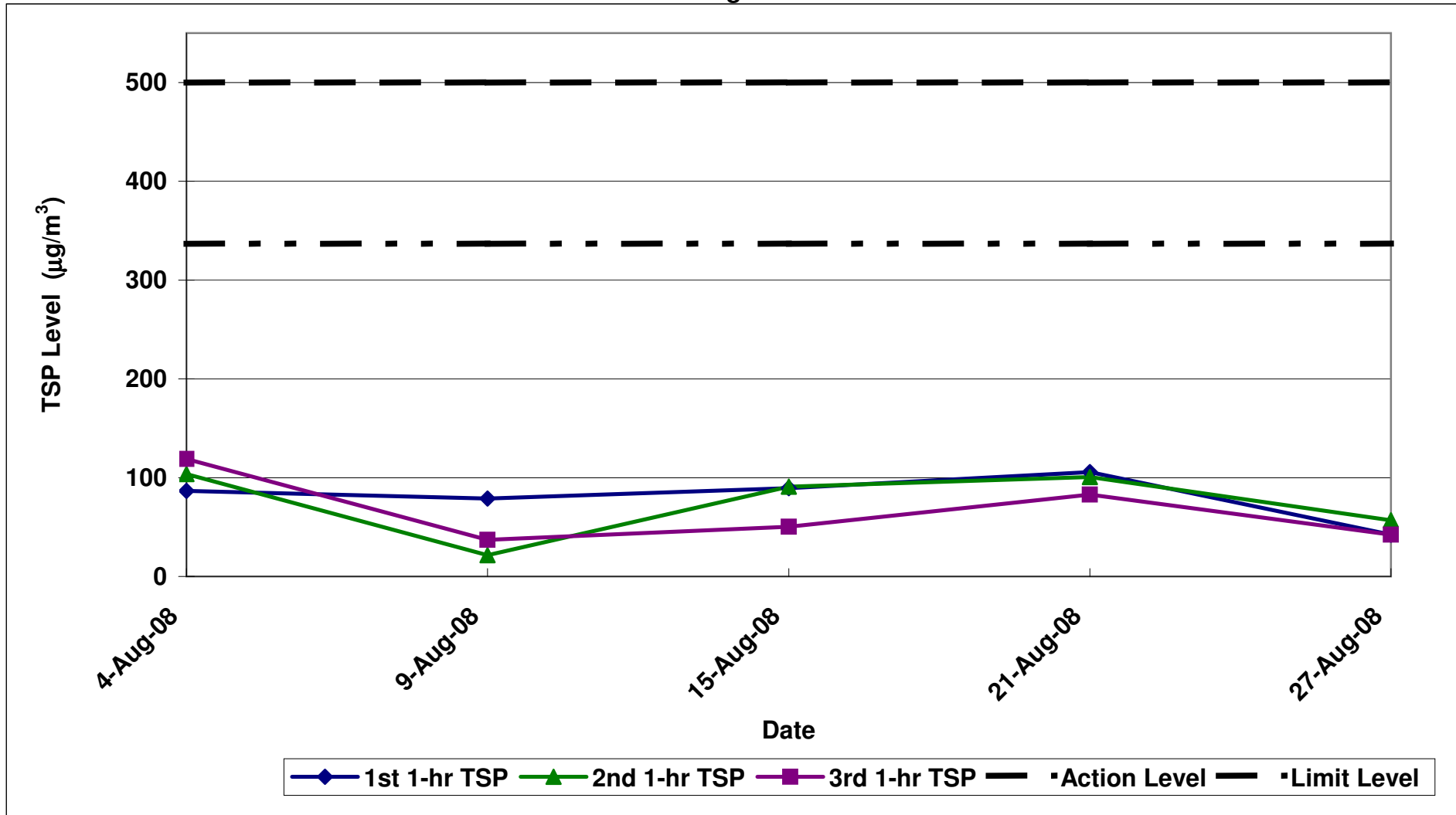
Contract No. DC/2007/12 - Design and Construction of Tsuen Wan Drainage Tunnel
Air Quality Monitoring (1-hr TSP) Results at Sik Sik Yuen Ho Fung College - Intake (ASR1)
Aug-08



Contract No. DC/2007/12 - Design and Construction of Tsuen Wan Drainage Tunnel
Air Quality Monitoring (1-hr TSP) Results at Hong Hoi Chee Hong Temple - Intake (ASR3)
Aug-08

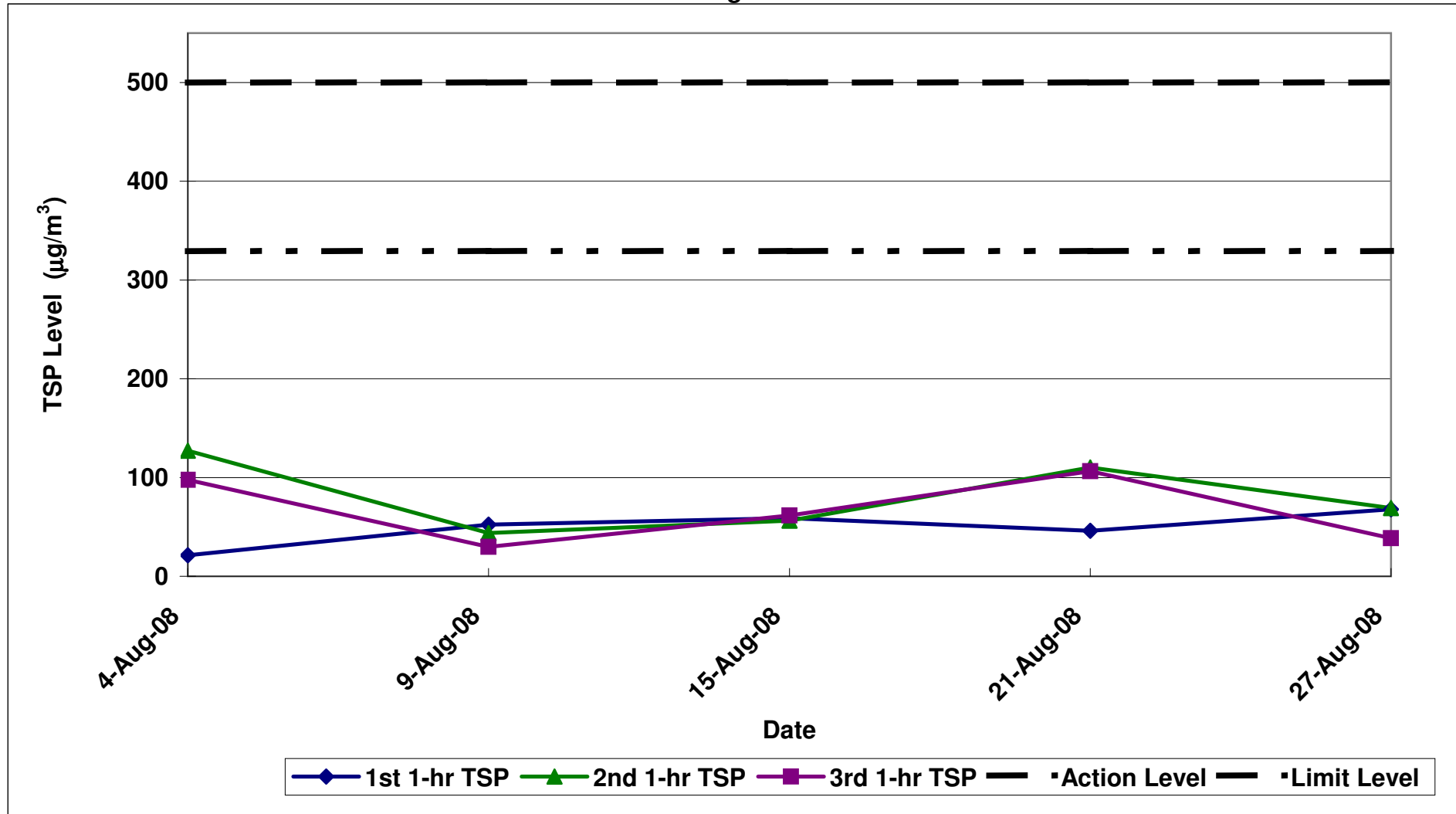


Contract No. DC/2007/12 - Design and Construction of Tsuen Wan Drainage Tunnel
Air Quality Monitoring (1-hr TSP) Results at Long Beach Gardens - Outfall (ASR8)
Aug-08



Contract No. DC/2007/12 - Design and Construction of Tsuen Wan Drainage Tunnel
Air Quality Monitoring (1-hr TSP) Results at Greenview Terrance - Outfall (ASR9)

Aug-08



Contract No. DC/2007/12 - Design and Construction of Tsuen Wan Drainage Tunnel

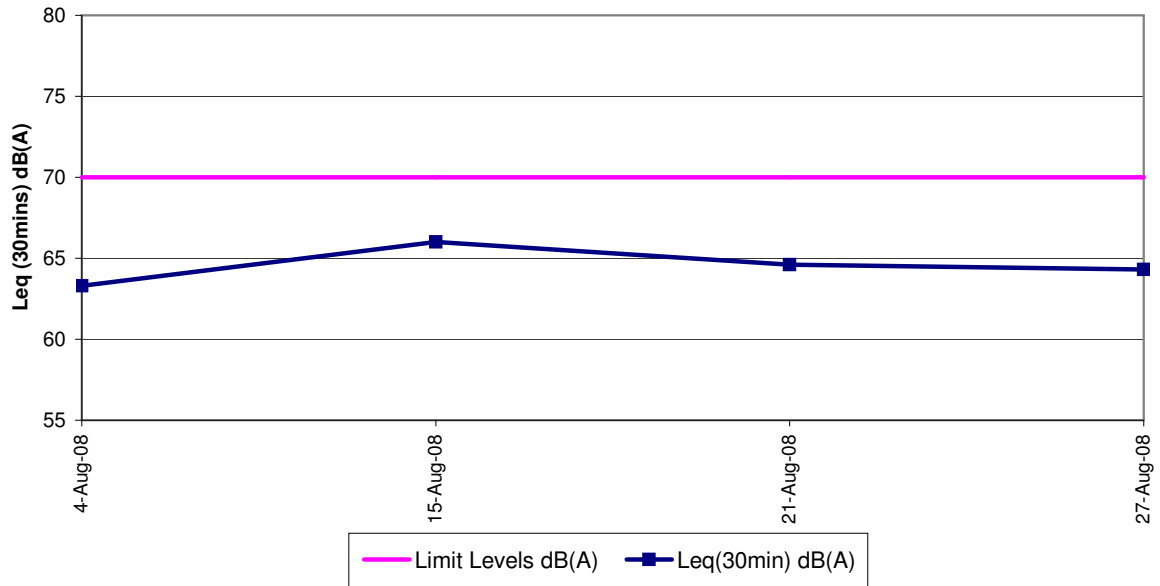
Noise Impact Monitoring Results

Monitoring Locations	Date	Weather Conditions	Temperature	Wind Speed	Wind	Start Time	End Time	Limit Levels dB(A)	L _{eq} (30min)	L ₁₀ (30min)	L ₉₀ (30min)	Observation / Site Condition During Monitoring	Remark
			(°C)	(m/s)	Direction				dB(A)	dB(A)	dB(A)		
Sik Sik Yuen Ho Fung College NSR 1	4-Aug-08	Fine	31	0.4	E	16:40	17:10	70	63.3	65.8	59.4	Backhoe excavator	Traffic noise ,human noise
	15-Aug-08	Sunny	29	0.6	E	16:10	16:40		66.0	68.9	61.5	Nil	Traffic noise ,human noise
	21-Aug-08	Cloudy	30	0.6	E	16:35	17:05		64.6	67.7	59.9	Nil	Traffic noise
	27-Aug-08	Sunny	30	0.5	E	17:00	17:30		64.3	68.3	61.0	Nil	Traffic noise, human noise
Hong Hoi Chee Hong Temple NSR 3	4-Aug-08	Fine	32	0.3	E	11:15	11:45	75	63.5	65.2	61.2	Nil	Water fall , Insect noise
	15-Aug-08	Sunny	29	0.5	E	10:30	11:00		62.1	64.0	57.8	Nil	Water fall , Insect noise
	21-Aug-08	Cloudy	30	0.4	E	16:30	17:00		61.8	64.7	57.3	Nil	Nil
	27-Aug-08	Sunny	30	0.4	E	11:30	12:00		64.1	67.1	60.1	Hammer Working	Water fall , Insect noise
Squatters NSR 6	4-Aug-08	Fine	32	0.3	E	14:35	15:05	75	62.9	64.8	60.0	Nil	Water fall ,dog barking and insect noise
	15-Aug-08	Sunny	28	0.4	E	14:05	14:35		61.6	64.8	57.4	Nil	Water fall ,dog barking and insect noise
	21-Aug-08	Cloudy	30	0.3	E	11:30	12:00		63.5	65.3	60.5	Nil	Bird, insect noise
	27-Aug-08	Sunny	32	0.3	E	14:35	15:05		61.4	64.1	57.7	Nil	Dog barking and insect noise
Long Beach Gardens NSR 8	4-Aug-08	Fine	29	0.6	E	9:10	9:40	75	63.5	66.3	58.3	Nil	Traffic noise
	15-Aug-08	Sunny	29	0.6	E	9:10	9:40		64.2	67.3	60.4	Backhoe excavator	Traffic noise
	21-Aug-08	Cloudy	30	0.8	E	10:05	10:35		64.9	68.0	61.4	Nil	Road traffic noise
	27-Aug-08	Sunny	30	1	E	10:10	10:40		63.9	66.4	60.3	Backhoe breaker	Traffic noise
Greenview Terrace NSR 9	4-Aug-08	Fine	29	0.8	E	10:07	10:37	75	62.3	64.8	58.1	Nil	Traffic noise
	15-Aug-08	Sunny	29	0.6	E	10:05	10:35		62.6	65.4	58.0	Backhoe excavator	Traffic noise
	21-Aug-08	Cloudy	30	0.6	E	9:05	9:35		61.1	63.9	57.7	Backhoe excavator, backhoe breaker	Traffic noise
	27-Aug-08	Sunny	30	0.7	E	9:05	9:35		65.2	67.9	61.7	Backhoe breaker	Traffic noise

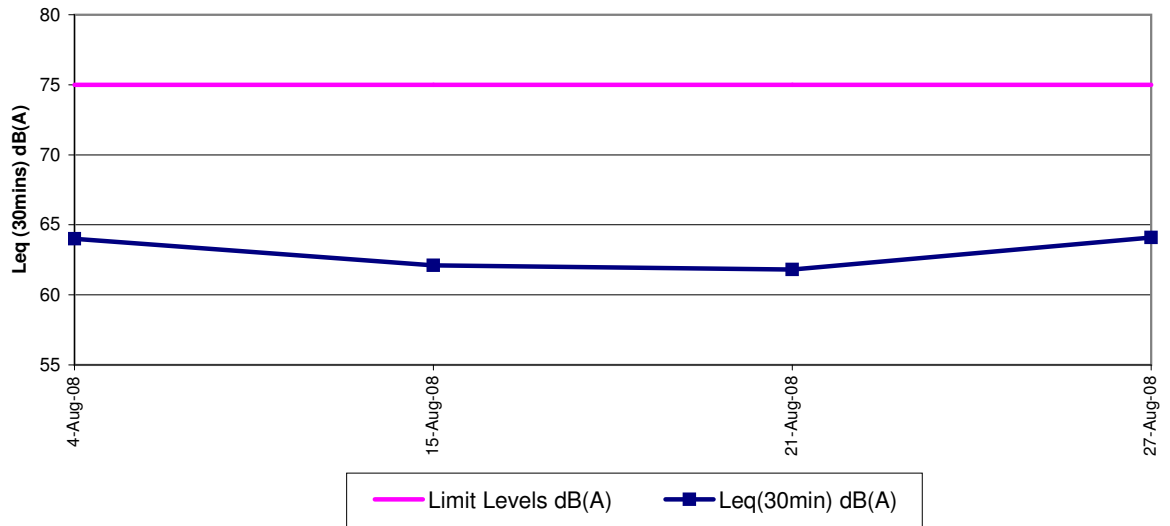
Note:

The limit level of NSR1 is 65dB(A) during school examination period.

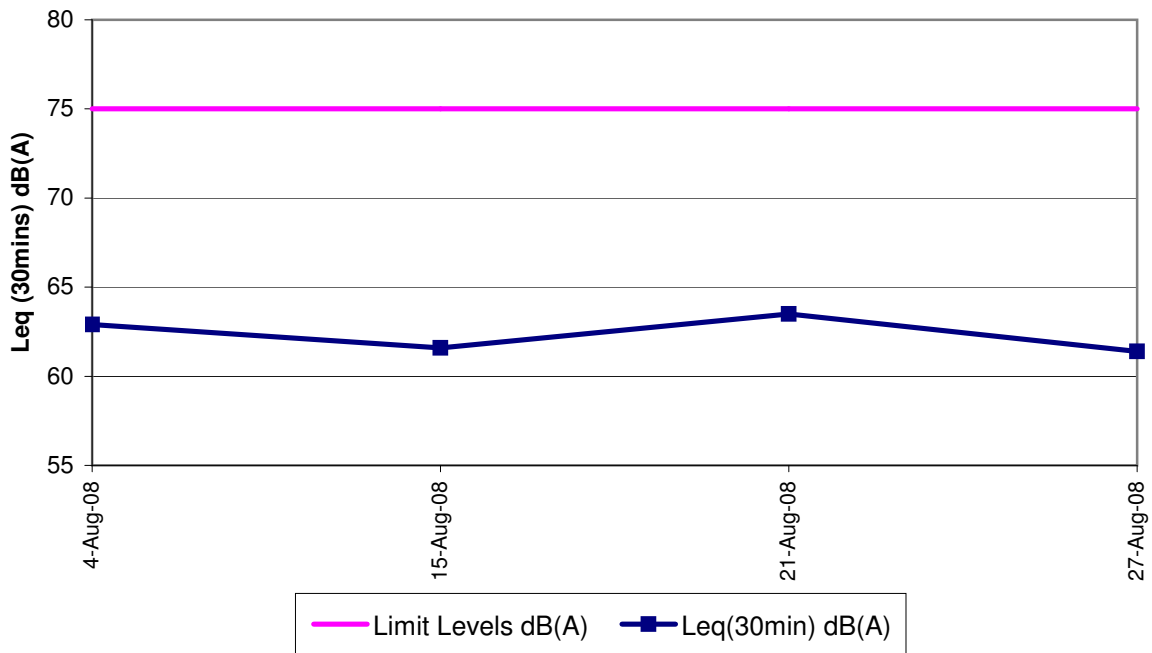
Contract No. DC/2007/12 - Design and Construction of Tsuen Wan Drainage Tunnel
Noise Monitoring Results at Sik Sik Yuen Ho Fung College (NSR1)
August 2008



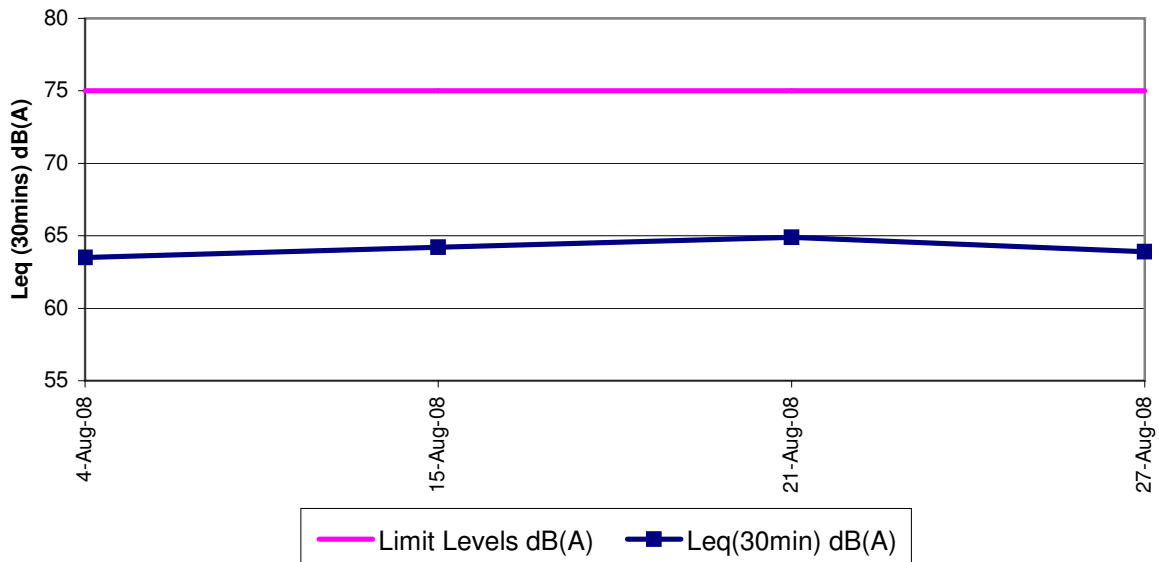
Contract No. DC/2007/12 - Design and Construction of Tsuen Wan Drainage Tunnel
Noise Monitoring Results at Hong Hoi Chee Hong Temple (NSR3)
August 2008



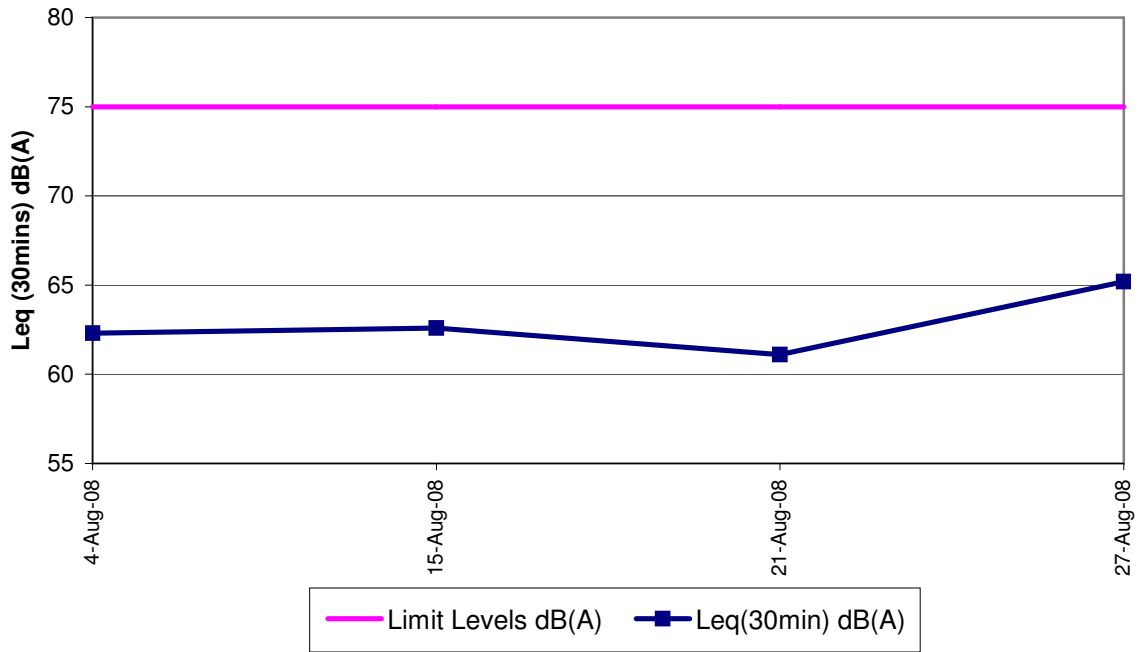
**Contract No. DC/2007/12 - Design and Construction of Tsuen Wan Drainage Tunnel
Noise Monitoring Results at Squatters (NSR6)
August 2008**



**Contract No. DC/2007/12 - Design and Construction of Tsuen Wan Drainage Tunnel
Noise Monitoring Results at Long Beach Gardens (NSR8)
August 2008**



Contract No. DC/2007/12 - Design and Construction of Tsuen Wan Drainage Tunnel
Noise Monitoring Results at Greenview Terrace (NSR9)
August 2008

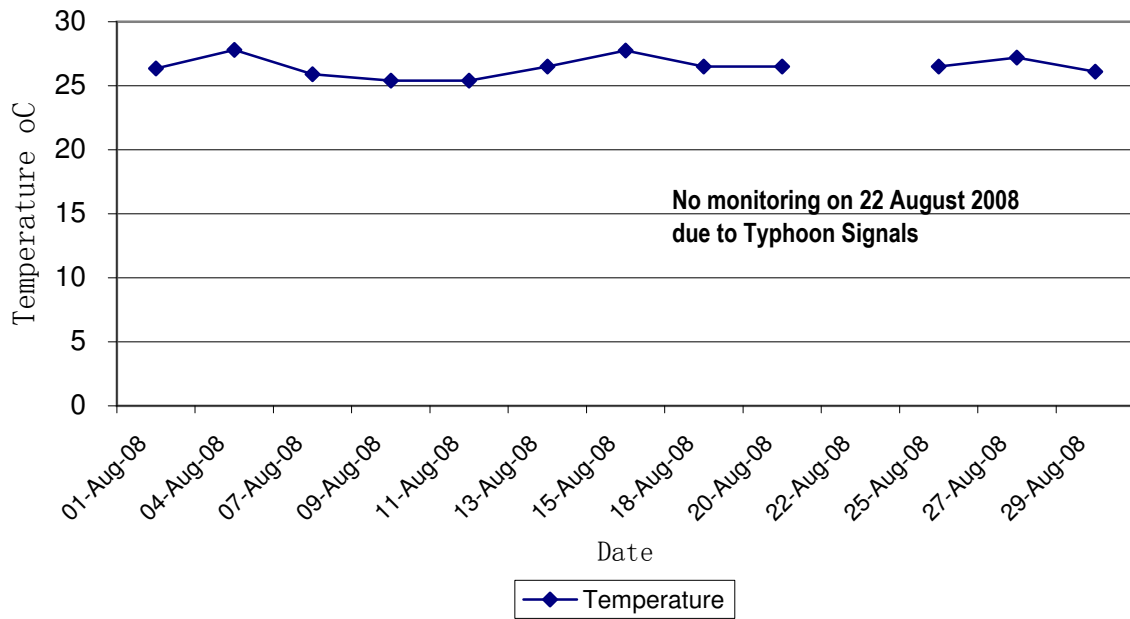


Contract No. DC/2007/12 - Design and Construction of Tsuen Wan Drainage Tunnel

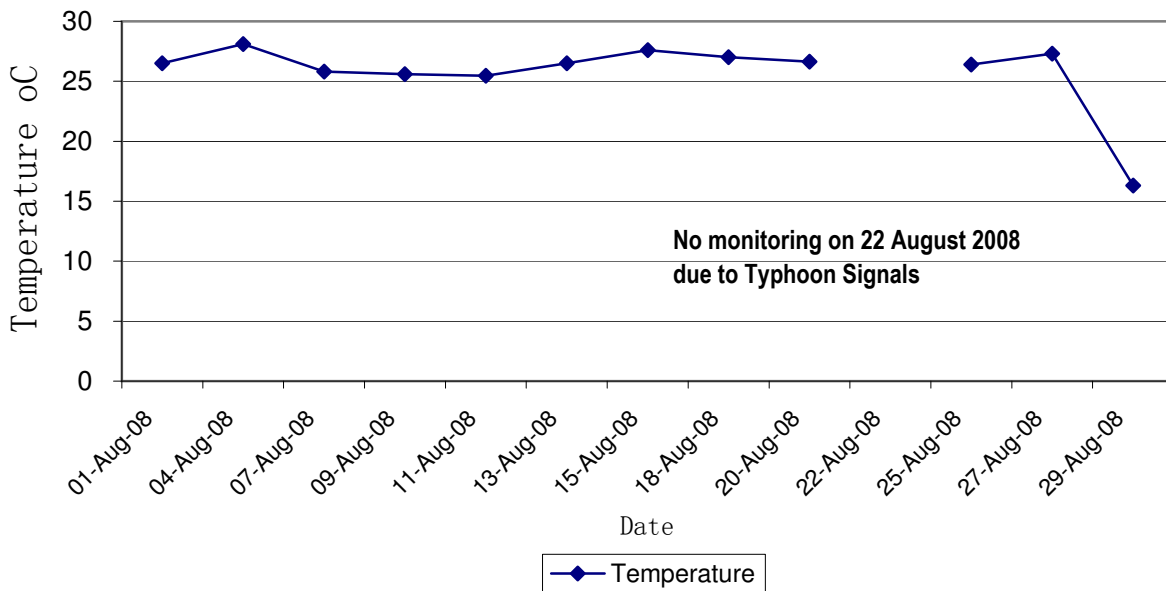
Water Quality Impact Monitoring Results

Monitoring Locations	Date	Start Time	Weather	Water Depth(m)	Temp			DO(mg/L)			Action/Limit Level of DO(mg/L)	pH			Turbidity(NTU)			Action/Limit Level of Tby	SS (mg/L)			Action/Limit Level of SS(mg/L)	Remarks:	Action to be taken
					1	2	Avg	1	2	Avg		1	2	Avg	1	2	Avg		1	2	Avg			
Sik Sik Yuen Ho Fung College I-1	01-Aug-08	09:05	Fine	<1	26.30	26.40	26.35	5.65	5.60	5.63	7.81	7.81	7.81	2.86	2.83	2.85	9.75 / 12.47	1.0	1.0	1.0	8.85 / 10.17			
	04-Aug-08	13:20	Fine	<1	27.80	27.80	27.80	5.33	5.13	5.23	7.67	7.69	7.68	3.17	3.16	3.17		3.6	2.9	3.3				
	07-Aug-08	09:45	Cloudy	<1	25.90	25.90	25.90	5.31	5.27	5.29	7.59	7.59	7.59	4.67	4.65	4.66		2.0	2.6	2.3				
	09-Aug-08	08:48	Sunny	<1	25.40	25.40	25.40	5.63	5.58	5.61	7.81	7.81	7.81	4.13	3.99	4.06		0.5	0.9	0.7				
	11-Aug-08	09:36	Rainy	<1	25.40	25.40	25.40	5.57	5.61	5.59	7.78	7.79	7.79	3.14	3.03	3.09		1.1	2.0	1.6				
	13-Aug-08	09:32	Sunny	<1	26.50	26.50	26.50	5.32	5.29	5.31	7.47	7.54	7.51	3.33	3.32	3.33		0.6	1.2	0.9				
	15-Aug-08	16:13	Sunny	<1	27.70	27.80	27.75	5.17	5.15	5.16	7.73	7.75	7.74	3.52	3.55	3.54		2.1	1.8	2.0				
	18-Aug-08	09:40	Sunny	<1	26.50	26.50	26.50	5.54	5.52	5.53	7.54	7.53	7.54	3.60	3.68	3.64		4.4	4.2	4.3				
	20-Aug-08	09:30	Sunny	<1	26.50	26.50	26.50	5.42	5.39	5.41	7.74	7.75	7.75	3.54	3.67	3.61		2.0	2.0	2.0				
	22-Aug-08	-	-	-	-	-	-	-	-	-	-	-	-	-	-	-		-	-	-			Monitoring was cancelled due to Typhoon No 9.	
	25-Aug-08	09:35	Fine	<1	26.50	26.50	26.50	5.12	5.10	5.11	7.59	7.58	7.59	5.64	5.43	5.54		3.2	3.1	3.2				
	27-Aug-08	13:32	Sunny	<1	27.20	27.20	27.20	5.25	5.16	5.21	7.80	7.80	7.80	3.87	3.92	3.90		2.0	2.5	2.3				
	29-Aug-08	09:11	Sunny	<1	26.10	26.10	26.10	5.24	5.19	5.22	7.72	7.71	7.72	4.13	4.03	4.08		3.2	3.1	3.2				
	Sik Sik Yuen Ho Fung College I-1-C	01-Aug-08	08:35	Fine	<1	26.50	26.50	26.50	5.83	5.67	5.75	7.88	7.82	7.85	3.84	3.70	3.77	-/-	2.0	2.0	2.0	-/-		
04-Aug-08		13:05	Fine	<1	28.20	28.00	28.10	5.76	5.70	5.73	7.75	7.75	7.75	3.93	3.83	3.88		3.7	3.1	3.4				
07-Aug-08		09:30	Cloudy	<1	25.80	25.80	25.80	5.89	5.79	5.84	7.83	7.82	7.83	5.44	5.61	5.53		2.5	2.8	2.7				
09-Aug-08		08:30	Sunny	<1	25.60	25.60	25.60	5.87	5.84	5.86	7.84	7.83	7.84	4.35	4.20	4.28		1.9	1.8	1.9				
11-Aug-08		09:20	Rainy	<1	25.40	25.50	25.45	5.76	5.77	5.77	7.76	7.76	7.76	3.21	3.16	3.19		3.1	3.2	3.2				
13-Aug-08		09:05	Sunny	<1	26.50	26.50	26.50	5.44	5.35	5.40	7.54	7.54	7.54	3.33	3.32	3.33		1.0	1.5	1.3				
15-Aug-08		15:52	Sunny	<1	27.60	27.60	27.60	5.43	5.39	5.41	7.73	7.73	7.73	3.65	3.53	3.59		1.8	1.5	1.7				
18-Aug-08		09:20	Sunny	<1	27.00	27.00	27.00	5.37	5.36	5.37	7.92	7.90	7.91	3.80	4.00	3.90		4.0	3.9	4.0				
20-Aug-08		09:10	Sunny	<1	26.70	26.60	26.65	5.54	5.51	5.53	7.72	7.71	7.72	3.68	3.58	3.63		2.0	2.0	2.0				
22-Aug-08		-	-	-	-	-	-	-	-	-	-	-	-	-	-	-		-	-	-			Monitoring was cancelled due to Typhoon No 9.	
25-Aug-08		09:25	Fine	<1	26.40	26.40	26.40	5.36	5.40	5.38	7.58	7.59	7.59	5.69	5.70	5.70		3.1	3.7	3.4				
27-Aug-08		13:10	Sunny	<1	27.30	27.30	27.30	5.16	5.11	5.14	7.77	7.77	7.77	3.89	3.77	3.83		2.9	2.4	2.7				
29-Aug-08		08:58	Sunny	<1	26.30	26.30	26.30	5.42	5.46	5.44	7.86	7.83	7.85	3.98	3.90	3.94		3.1	3.6	3.4				
Hong Hoi Chee Hong Temple I-2		01-Aug-08	11:59	Fine	<1	26.80	26.80	26.80	5.23	5.20	5.22	7.92	7.88	7.90	4.83	4.76	4.80	-/-	1.0	1.0	1.0	-/-		
	04-Aug-08	09:48	Fine	<1	28.00	28.10	28.05	5.63	5.67	5.65	7.85	7.88	7.87	2.65	2.63	2.64		1.0	1.0	1.0				
	07-Aug-08	12:05	Cloudy	<1	24.80	24.80	24.80	5.48	5.50	5.49	7.51	7.49	7.50	5.48	5.50	5.49		3.5	3.8	3.7				
	09-Aug-08	09:48	Sunny	<1	24.70	24.70	24.70	5.29	5.26	5.28	7.37	7.37	7.37	2.16	2.09	2.13		0.9	1.1	1.0				
	11-Aug-08	10:59	Rainy	<1	25.00	25.00	25.00	5.43	5.42	5.43	7.65	7.62	7.64	2.07	2.13	2.10		1.8	1.8	1.8			No direct disturbance was observed contributed by project construction activities and the measured SS at both impact & control stations were well below Action Level of baseline measurement. No action is required.*	
	13-Aug-08	10:50	Sunny	<1	26.50	26.50	26.50	5.52	5.43	5.48	7.74	7.74	7.74	2.42	2.50	2.46		0.9	0.7	0.8			No direct disturbance was observed contributed by project construction activities and the measured SS at both impact & control stations were well below Action & Limit Level of baseline measurement. No action is required.*	
	15-Aug-08	08:40	Sunny	<1	27.00	27.00	27.00	5.10	5.02	5.06	7.59	7.58	7.59	3.44	3.23	3.34		2.4	2.8	2.6				
	18-Aug-08	10:53	Sunny	<1	27.00	27.00	27.00	5.54	5.55	5.55	7.48	7.50	7.49	2.21	2.12	2.17		1.7	2.1	1.9				
	20-Aug-08	10:48	Sunny	<1	27.00	27.00	27.00	5.72	5.71	5.72	7.71	7.70	7.71	2.47	2.39	2.43		2.0	2.0	2.0				
	22-Aug-08	-	-	-	-	-	-	-	-	-	-	-	-	-	-	-		-	-	-			Monitoring was cancelled due to Typhoon No 9.	
	25-Aug-08	10:45	Fine	<1	26.10	26.10	26.10	5.34	5.35	5.35	7.32	7.36	7.34	2.18	2.02	2.10		2.0	2.0	2.0				
	27-Aug-08	10:30	Sunny	<1	26.60	26.70	26.65	5.41	5.34	5.38	7.50	7.53	7.52	3.28	3.47	3.38		2.0	2.8	2.4				
	29-Aug-08	10:18	Sunny	<1	26.40	26.40	26.40	5.05	5.02	5.04	7.43	7.44	7.44	2.04	2.15	2.10		2.0	2.0	2.0				
	Hong Hoi Chee Hong Temple I-2-C	01-Aug-08	10:48	Fine	<1	26.80	26.80	26.80	5.13	5.11	5.12	7.70	7.75	7.73	5.34	5.41	5.38	-/-	2.0	3.0	2.5	-/-		
04-Aug-08		09:30	Fine	<1	28.00	28.00	28.00	5.42	5.41	5.42	7.91	7.92	7.92	2.44	2.39	2.42		1.0	1.0	1.0				
07-Aug-08		11:50	Cloudy	<1	24.70	24.70	24.70	5.58	5.64	5.61	7.60	7.60	7.60	5.58	5.62	5.60		3.3	3.9	3.6				
09-Aug-08		09:32	Sunny	<1	24.80	24.80	24.80	5.78	5.76	5.77	7.63	7.61	7.62	2.21	2.17	2.19		1.1	0.6	0.9				
11-Aug-08		10:40	Rainy	<1	25.20	25.10	25.15	5.89	5.85	5.87	7.64	7.64	7.64	2.15	2.29	2.22		1.2	1.7	1.5				
13-Aug-08		10:32	Sunny	<1	26.40	26.40	26.40	5.72	5.62	5.67	7.78	7.72	7.75	2.67	2.52	2.60		0.2	0.2	0.2				
15-Aug-08		08:20	Sunny	<1	27.50	27.20	27.35	5.60	5.55	5.58	7.61	7.61	7.61	3.37	3.55	3.46		2.9	2.1	2.5				
18-Aug-08		10:40	Sunny	<1	26.80	26.70	26.75	5.34	5.32	5.33	7.51	7.50	7.51	2.20	2.08	2.14		2.2	1.7	2.0				
20-Aug-08		10:35	Sunny	<1	26.60	26.50	26.55	5.38	5.33	5.36	7.58	7.56	7.57	2.25	2.32	2.29		2.0	2.0	2.0				
22-Aug-08		-	-	-	-	-	-	-	-	-	-	-	-	-	-	-		-	-	-			Monitoring was cancelled due to Typhoon No 9.	
25-Aug-08		10:35	Fine	<1	26.30	26.30	26.30	5.22	5.17	5.20	7.44	7.43	7.44	2.18	2.03	2.11		2.0	2.0	2.0				
27-Aug-08		10:10	Sunny	<1	26.70	26.70	26.70	5.03	5.02	5.03	7.44	7.47	7.46	3.97	3.50	3.74		2.5	2.3	2.4				
29-Aug-08		09:57	Sunny	<1	26.80	26.80	26.80	5.33	5.32	5.33	7.74	7.73	7.74	2.29	2.18	2.24		2.0	2.0	2.0				
Squatters I-3		01-Aug-08	11:58	Fine	<1	27.70	27.80	27.75	5.53	5.35	5.44	7.67	7.68	7.68	2.99	2.85	2.92	-/-	1.0	2.0	1.5	-/-		
	04-Aug-08	15:38	Fine	<1	28.70	28.70	28.70	5.50	5.39	5.45	7.91	7.95	7.93	2.36	2.34	2.35		1.0	1.0	1.0				
	07-Aug-08	13:50	Cloudy	<1	25.30	25.40	25.35	5.80	5.77	5.79	7.36	7.37	7.37	3.76	3.66	3.71		3.0	2.4	2.7				
	09-Aug-08	11:03	Sunny	<1																				

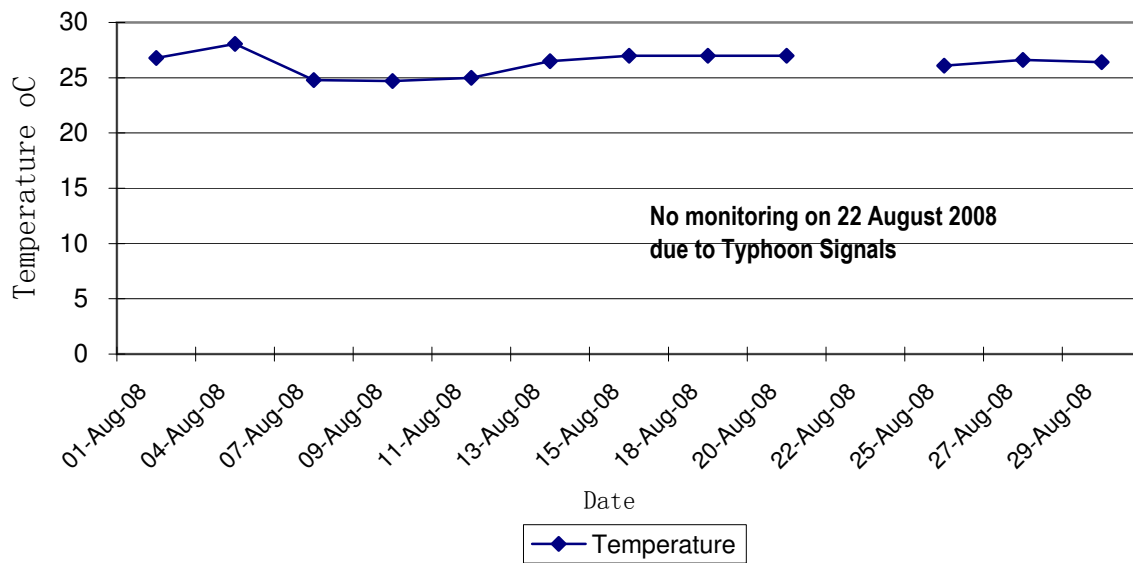
Contract No. DC/2007/12 - Design and Construction of Tsuen Wan Drainage Tunnel
Water Quality Results at Sik Sik Yuen Ho Fung College (I-1)
August 2008



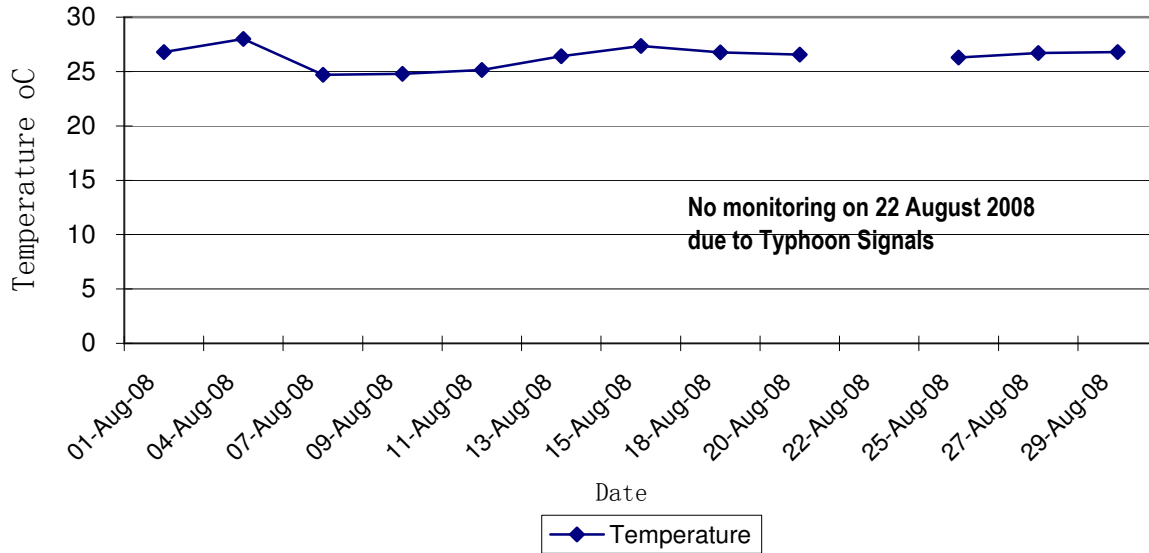
Contract No. DC/2007/12 - Design and Construction of Tsuen Wan Drainage Tunnel
Water Quality Results at Sik Sik Yuen Ho Fung College (I-1-C)
August 2008



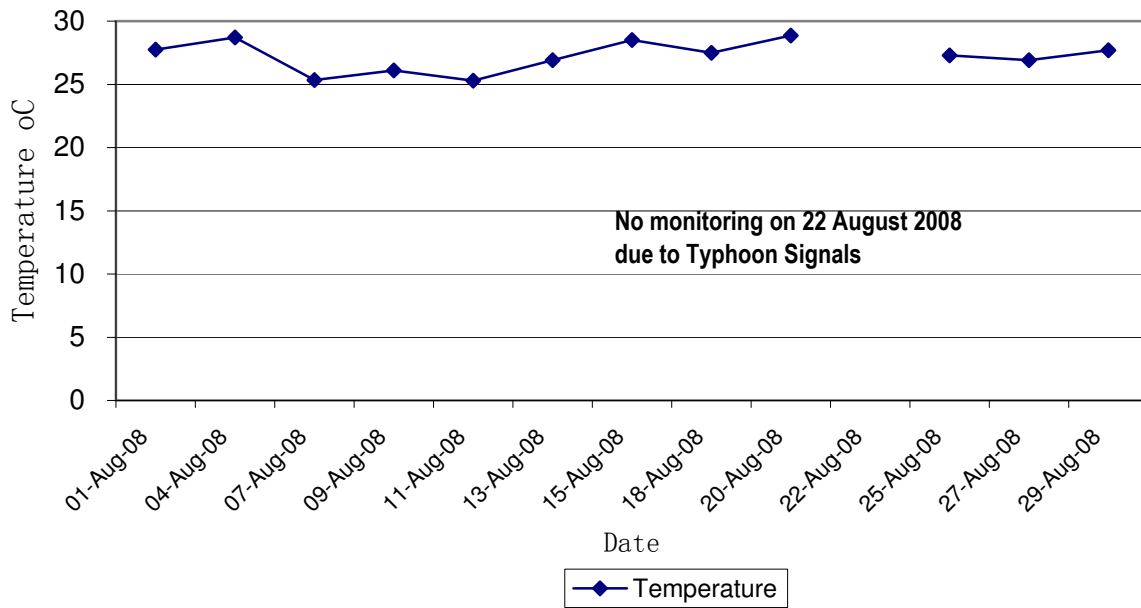
Contract No. DC/2007/12 - Design and Construction of Tsuen Wan Drainage Tunnel
Water Quality Results at Hong Hoi Chee Hong Temple (I-2)
August 2008



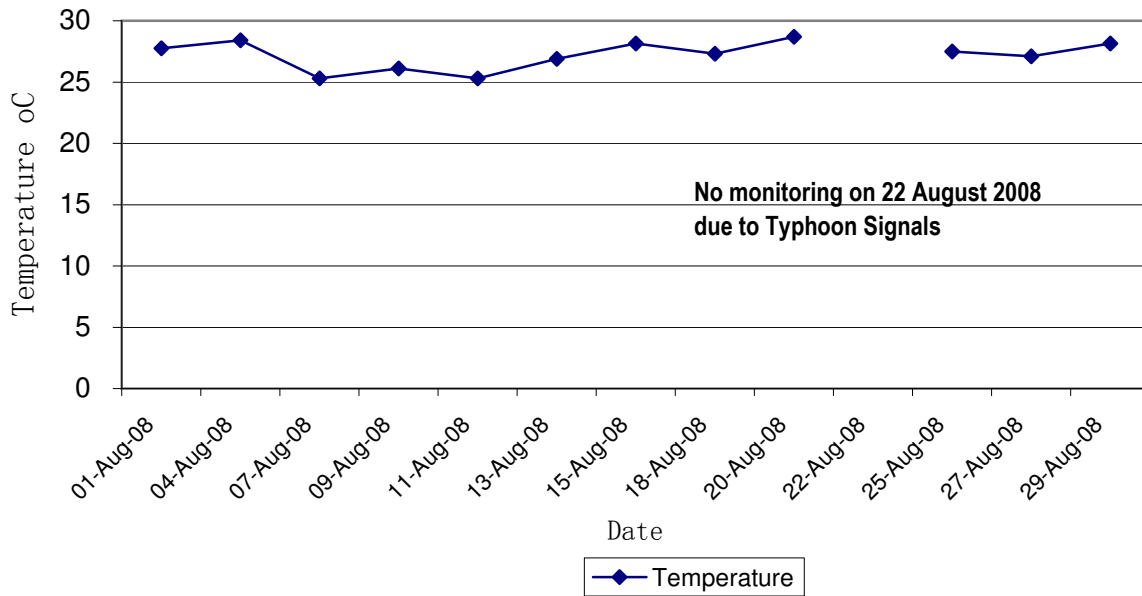
Contract No. DC/2007/12 - Design and Construction of Tsuen Wan Drainage Tunnel
Water Quality Results at Hong Hoi Chee Hong Temple (I-2-C)
August 2008

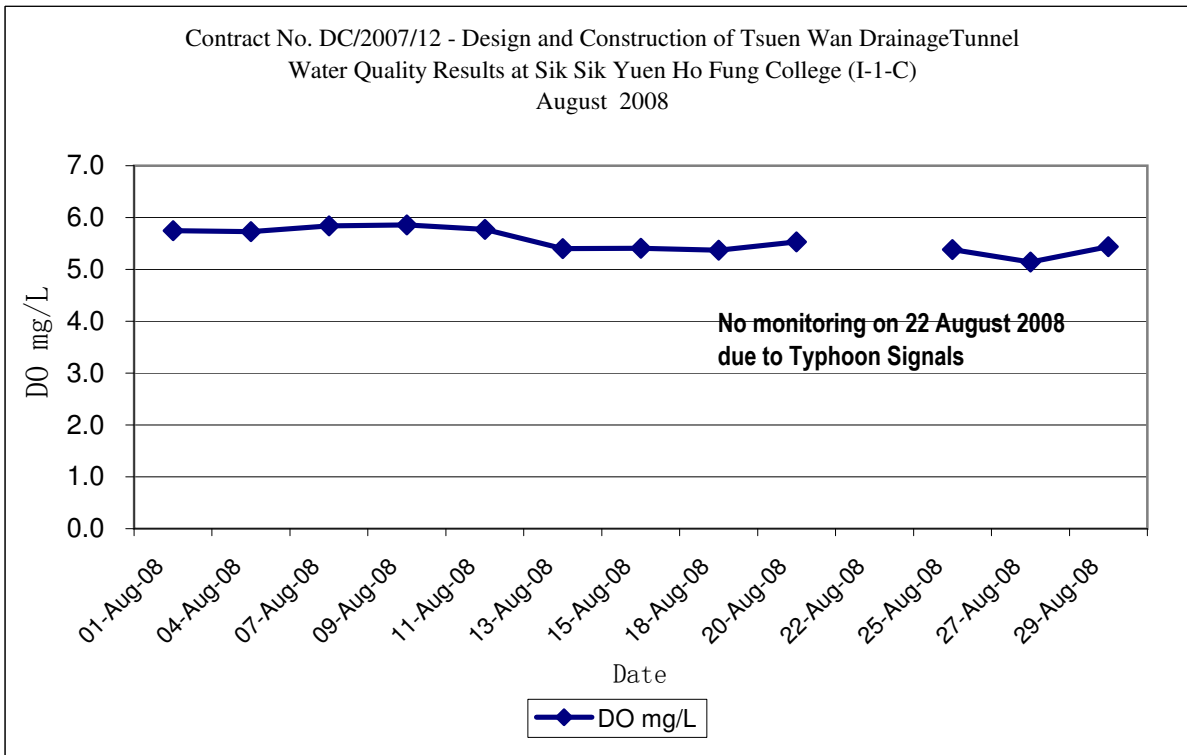
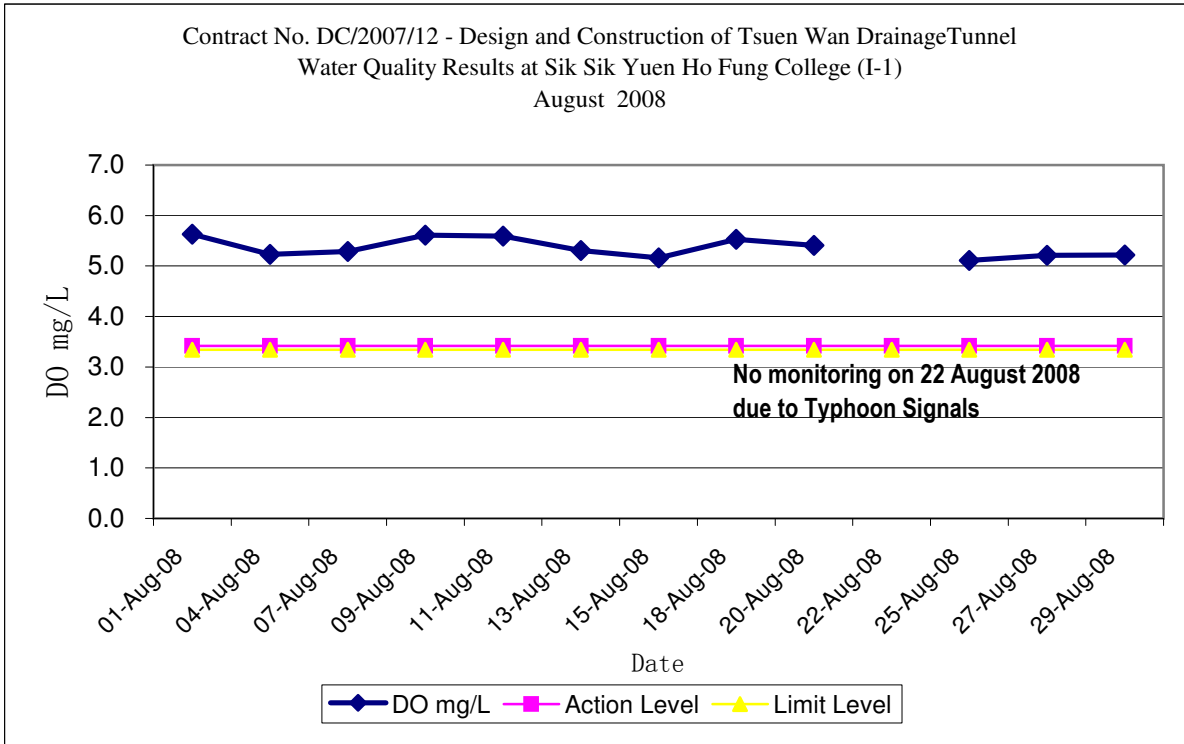


Contract No. DC/2007/12 - Design and Construction of Tsuen Wan Drainage Tunnel
Water Quality Results at Squatters (I-3)
August 2008



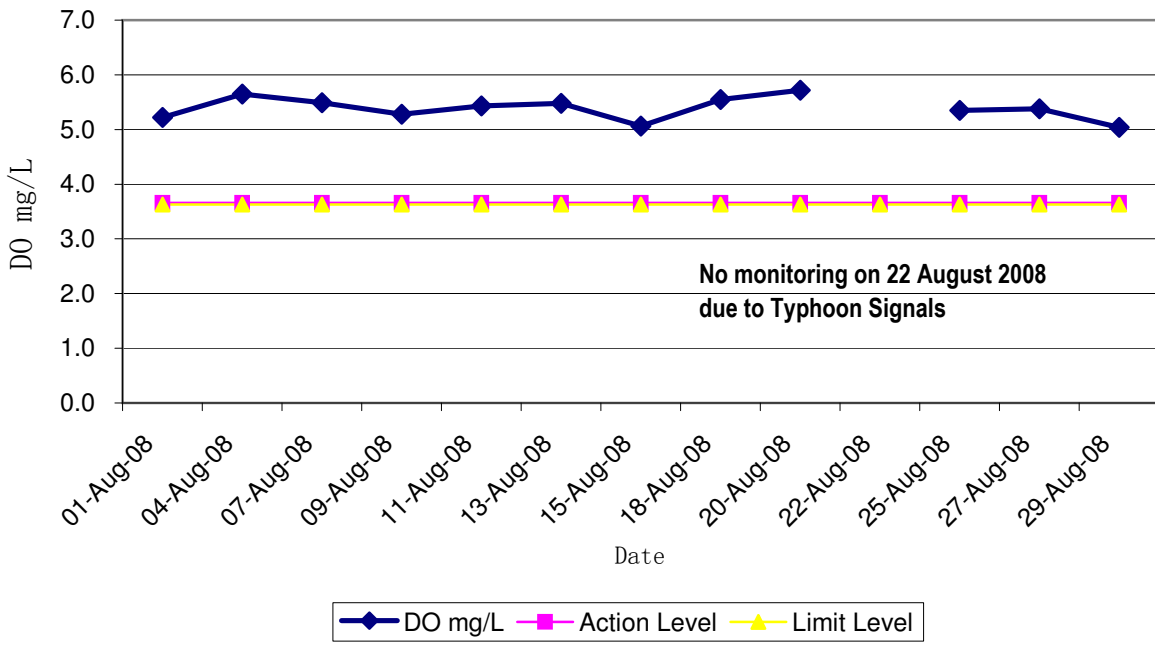
Contract No. DC/2007/12 - Design and Construction of Tsuen Wan Drainage Tunnel
Water Quality Results at Squatters (I-3-C)
August 2008



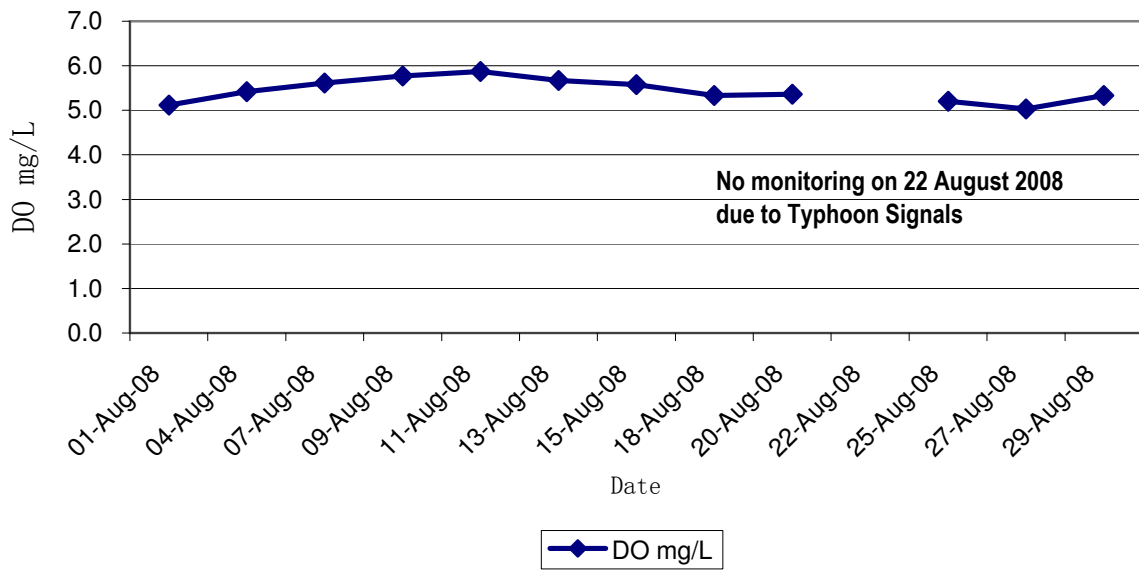


Note: Exceedances of Action / Limit Levels occur when the levels of DO are below the respective limit levels.

Contract No. DC/2007/12 - Design and Construction of Tsuen Wan Drainage Tunnel
 Water Quality Results at Hong Hoi Chee Jong Temple (I-2)
 August 2008

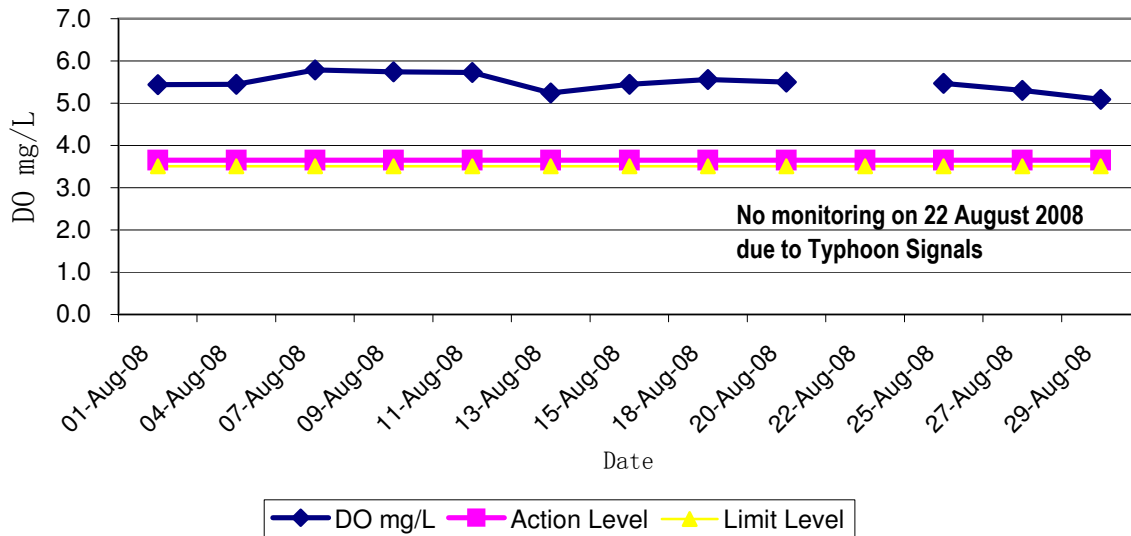


Contract No. DC/2007/12 - Design and Construction of Tsuen Wan Drainage Tunnel
 Water Quality Results at Hong Hoi Chee Jong Temple (I-2-C)
 August 2008

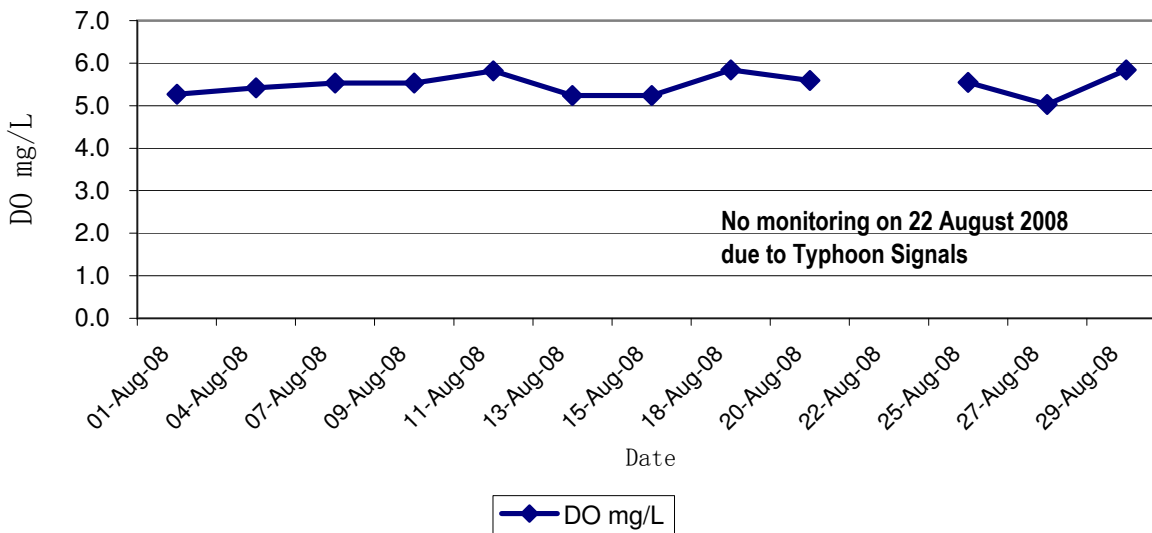


Note: Exceedances of Action / Limit Levels occur when the levels of DO are below the respective limit levels.

Contract No. DC/2007/12 - Design and Construction of Tsuen Wan Drainage Tunnel
 Water Quality Results at Squatters (I-3)
 August 2008

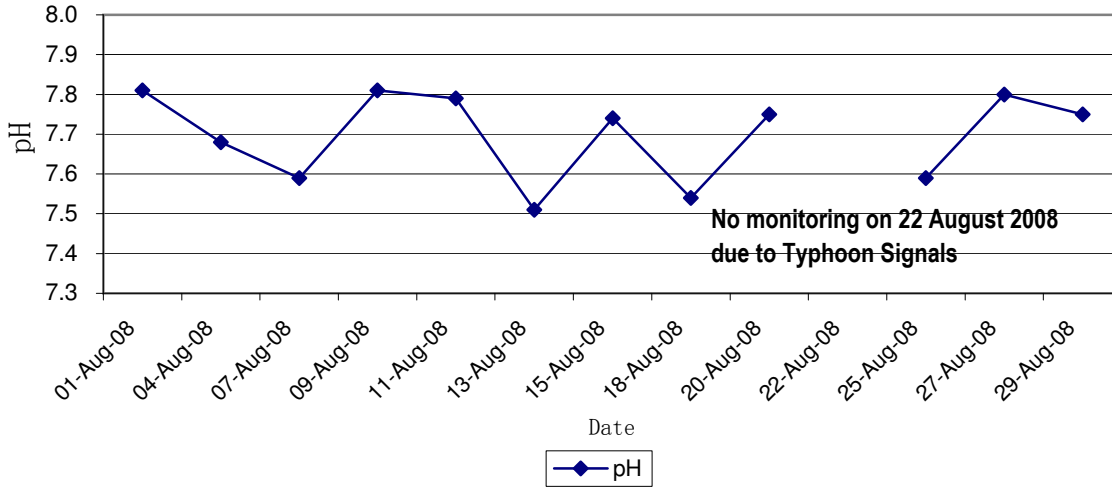


Contract No. DC/2007/12 - Design and Construction of Tsuen Wan Drainage Tunnel
 Water Quality Results at Squatters (I-3-C)
 August 2008

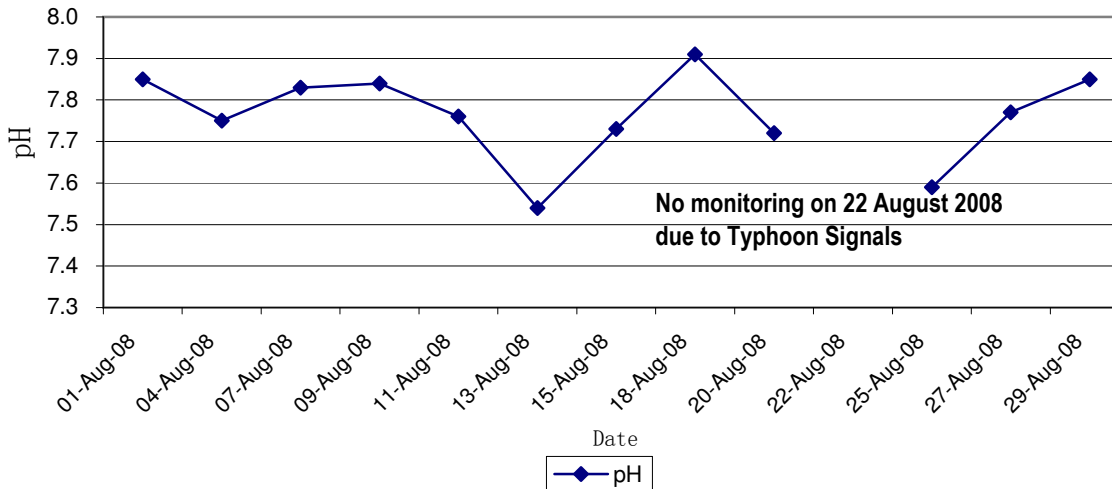


Note: Exceedances of Action / Limit Levels occur when the levels of DO are below the respective limit levels.

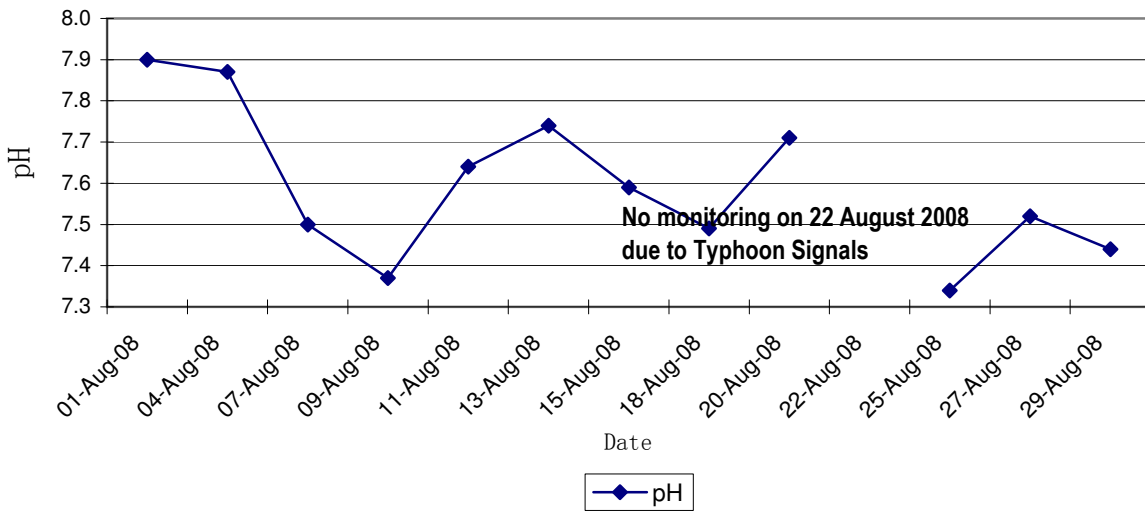
Contract No. DC/2007/12 - Design and Construction of Tsuen Wan Drainage Tunnel
Water Quality Results at Sik Sik Yuen Ho Fung College (I-1)
August 2008



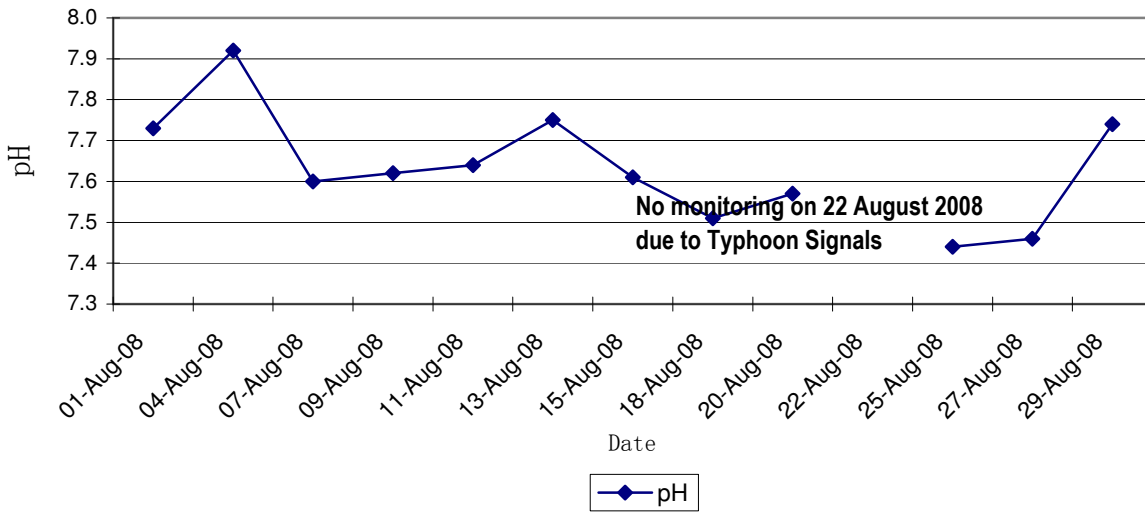
Contract No. DC/2007/12 - Design and Construction of Tsuen Wan Drainage Tunnel
Water Quality Results at Sik Sik Yuen Ho Fung College (I-1-C)
August 2008



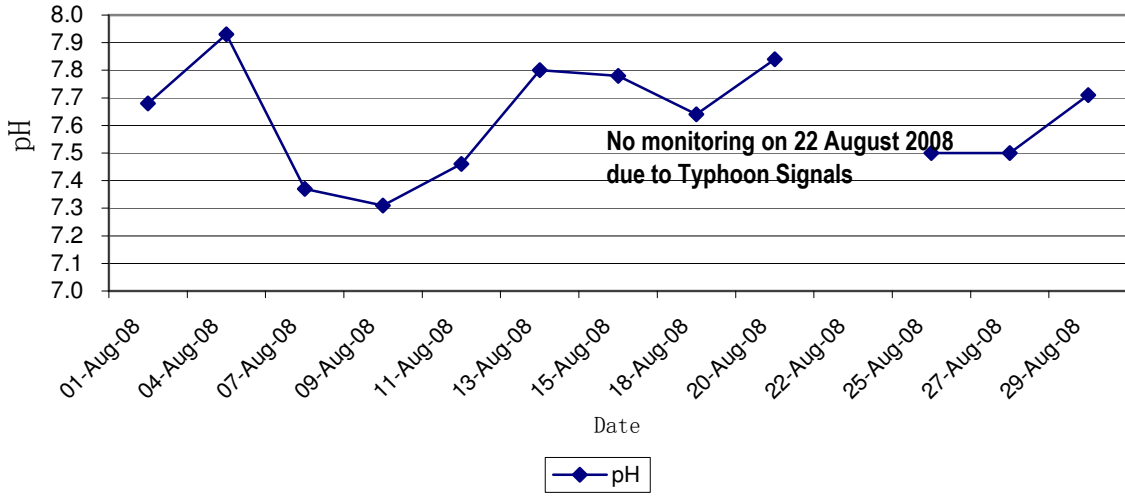
Contract No. DC/2007/12 - Design and Construction of Tsuen Wan Drainage Tunnel
Water Quality Results at Sik Sik Yuen Ho Fung College (I-2)
August 2008



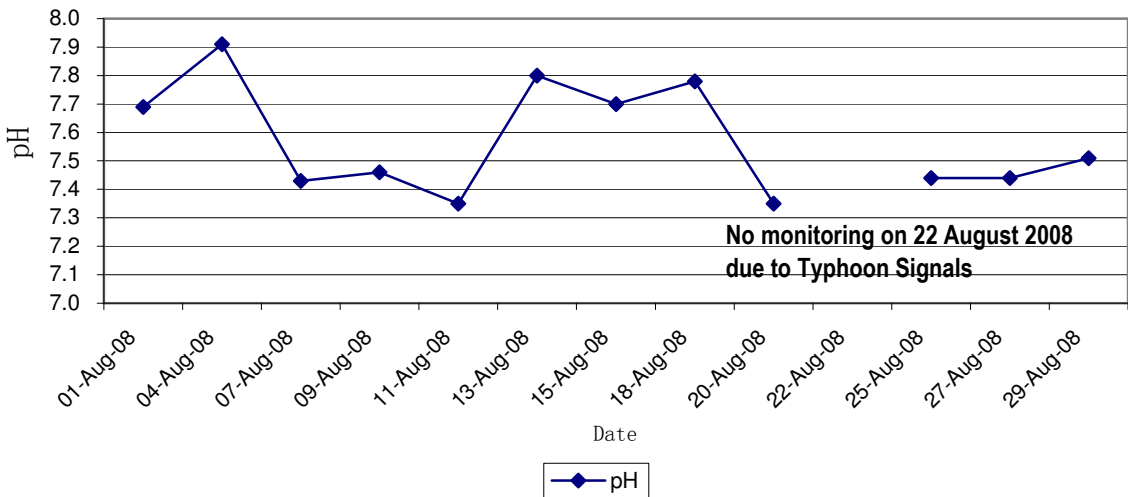
Contract No. DC/2007/12 - Design and Construction of Tsuen Wan Drainage Tunnel
Water Quality Results at Sik Sik Yuen Ho Fung College (I-2-C)
August 2008



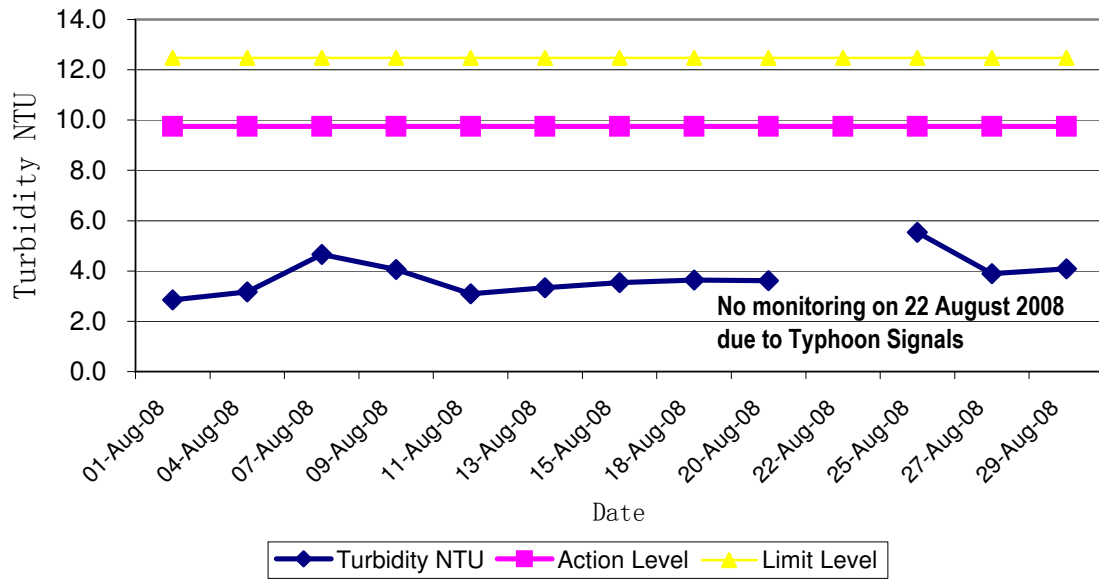
Contract No. DC/2007/12 - Design and Construction of Tsuen Wan Drainage Tunnel
Water Quality Results at Squatters (I-3)
August 2008



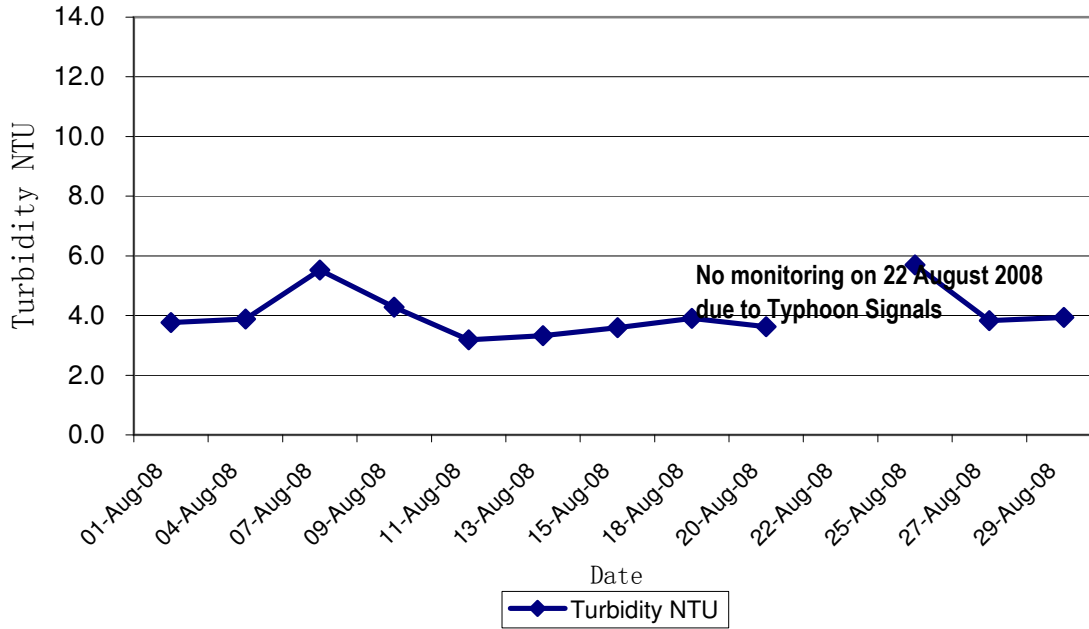
Contract No. DC/2007/12 - Design and Construction of Tsuen Wan Drainage Tunnel
Water Quality Results at Squatters (I-3-C)
August 2008



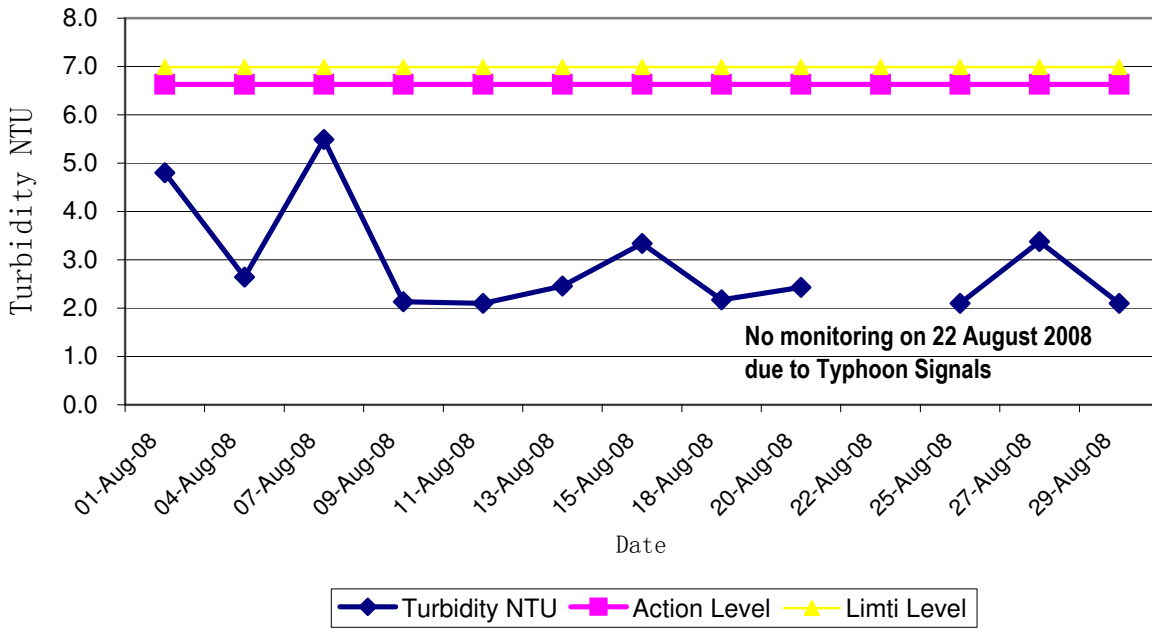
Contract No. DC/2007/12 - Design and Construction of Tsuen Wan Drainage Tunnel
 Quality Results at Sik Sik Yuen Ho Fung College (I-1)
 August 2008



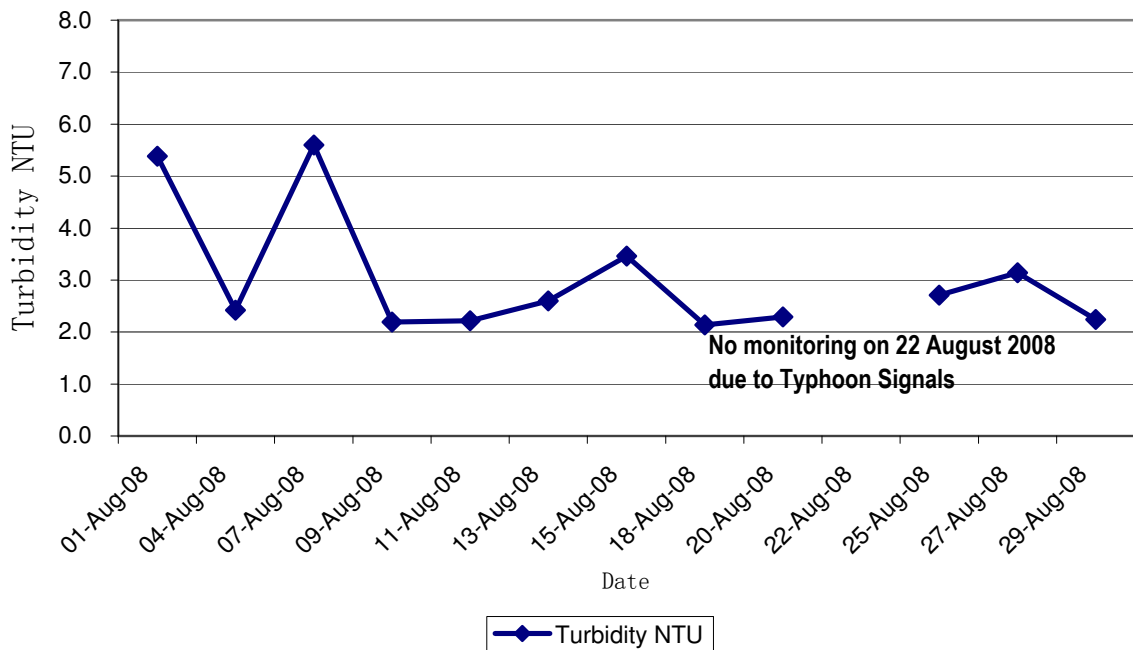
Contract No. DC/2007/12 - Design and Construction of Tsuen Wan Drainage Tunnel
 Water Quality Results at Sik Sik Yuen Ho Fung College (I-1-C)
 August 2008



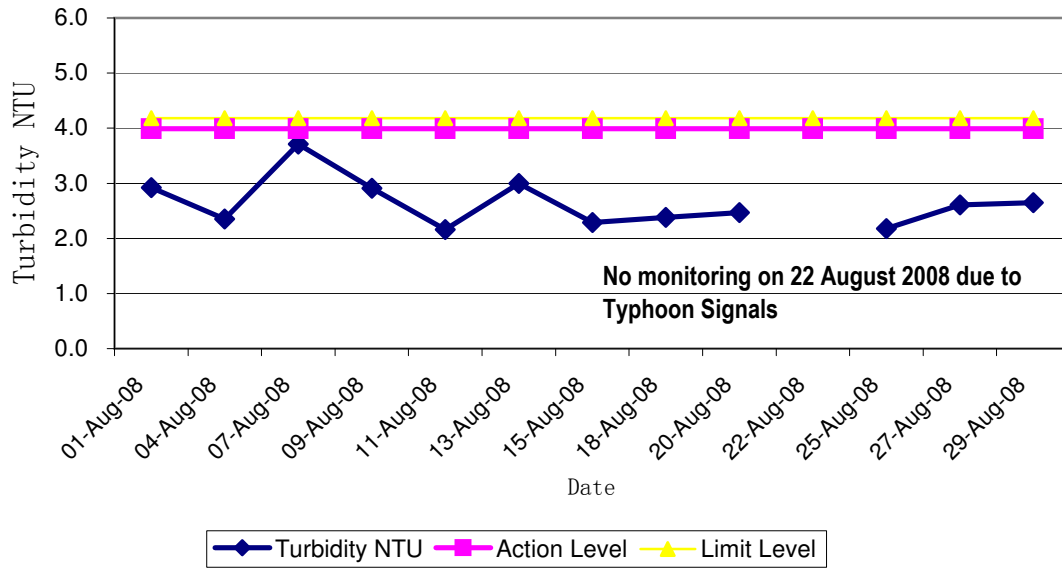
Contract No. DC/2007/12 - Design and Construction of Tsuen Wan Drainage Tunnel
 Water Quality Results at Hong Hoi Chee Jong Temple (I-2)
 August 2008



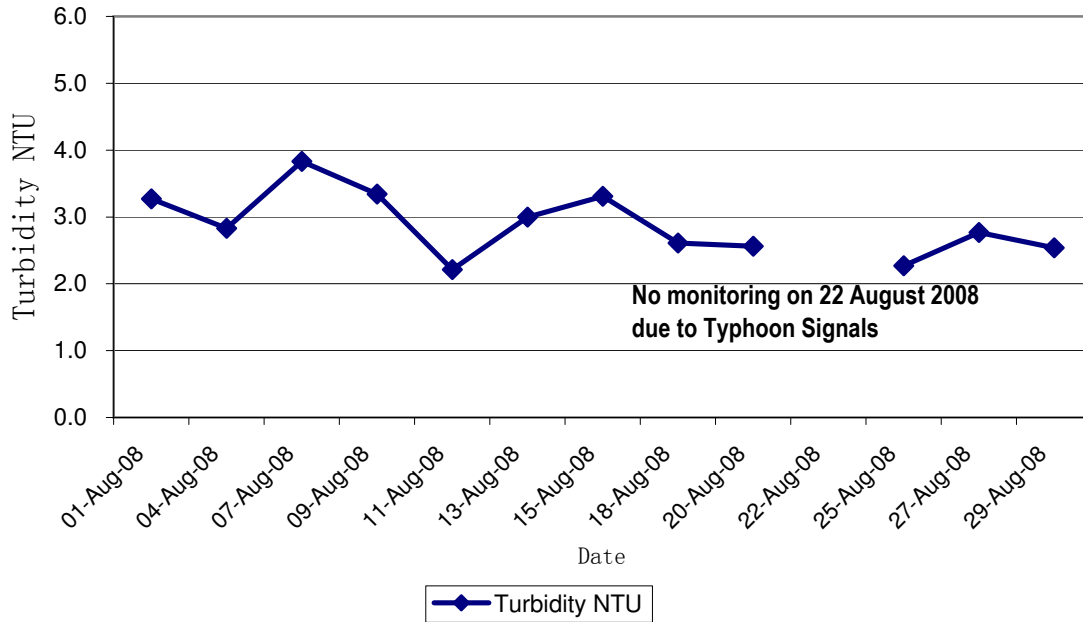
Contract No. DC/2007/12 - Design and Construction of Tsuen Wan Drainage Tunnel
 Water Quality Results at Hong Hoi Chee Jong Temple (I-2-C)
 August 2008



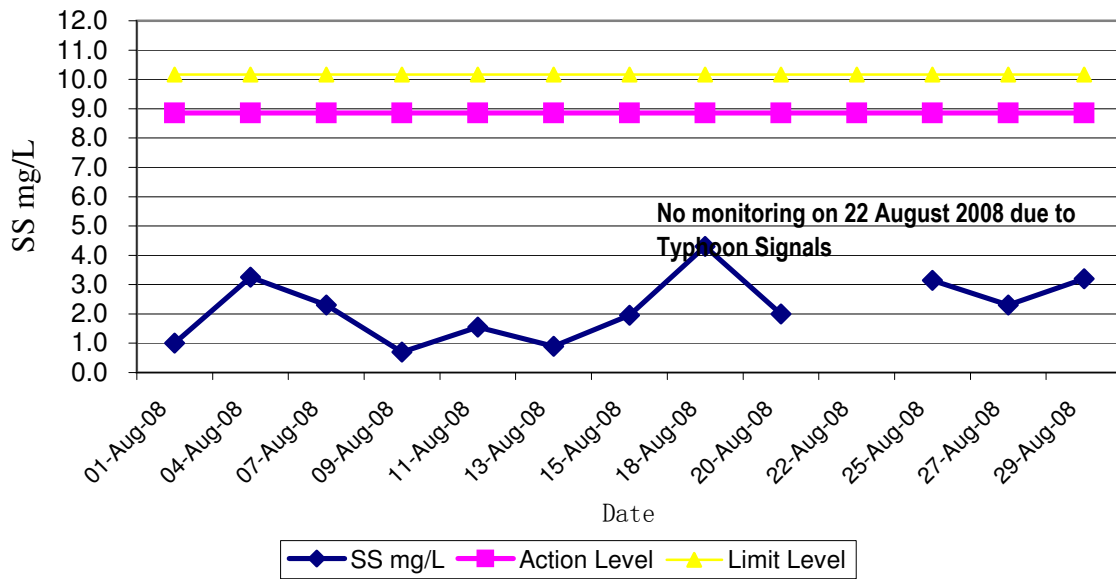
Contract No. DC/2007/12 - Design and Construction of Tsuen Wan Drainage Tunnel
 Water Quality Results at Squatters (I-3)
 August 2008



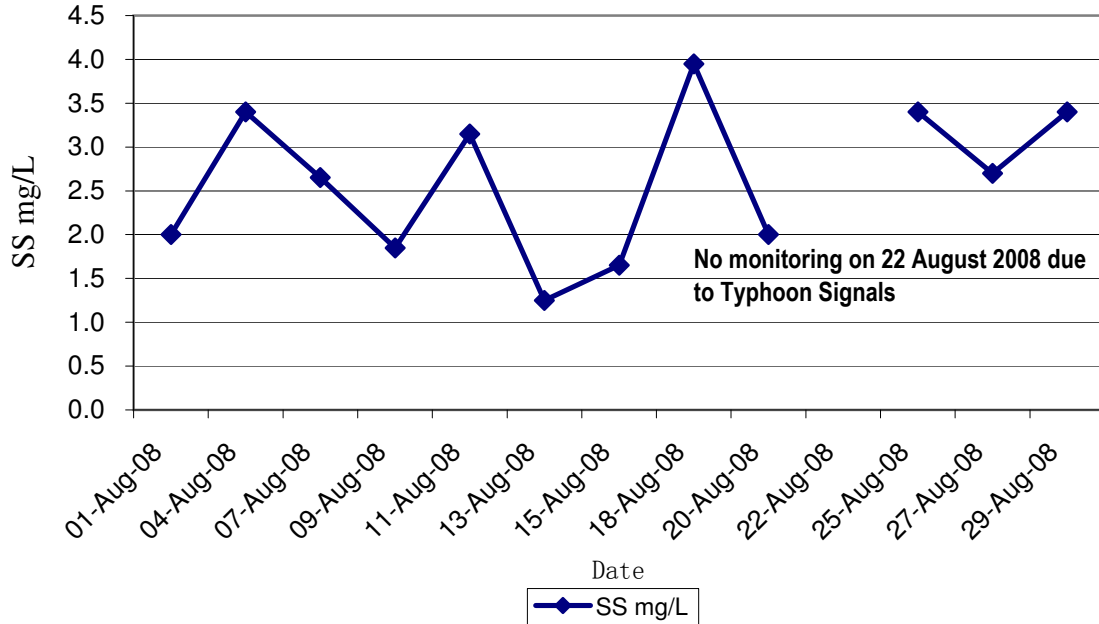
Contract No. DC/2007/12 - Design and Construction of Tsuen Wan Drainage Tunnel
 Water Quality Results at Squatters (I-3-C)
 August 2008



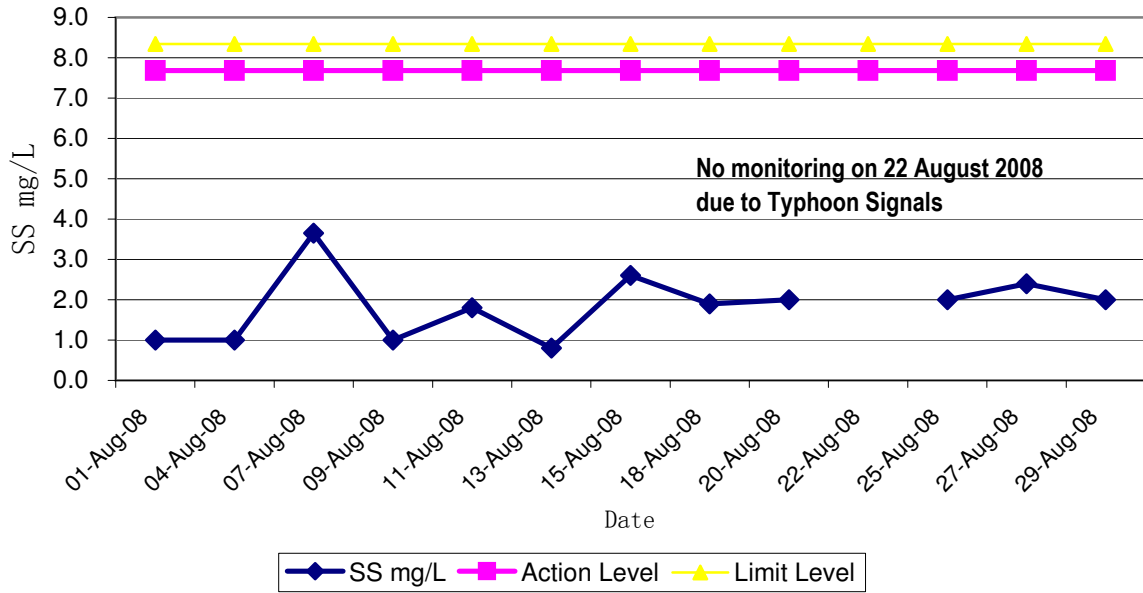
Contract No. DC/2007/12 - Design and Construction of Tsuen Wan Drainage Tunnel
 Water Quality Results at Sik Sik Yuen Ho Fung College (I-1)
 August 2008



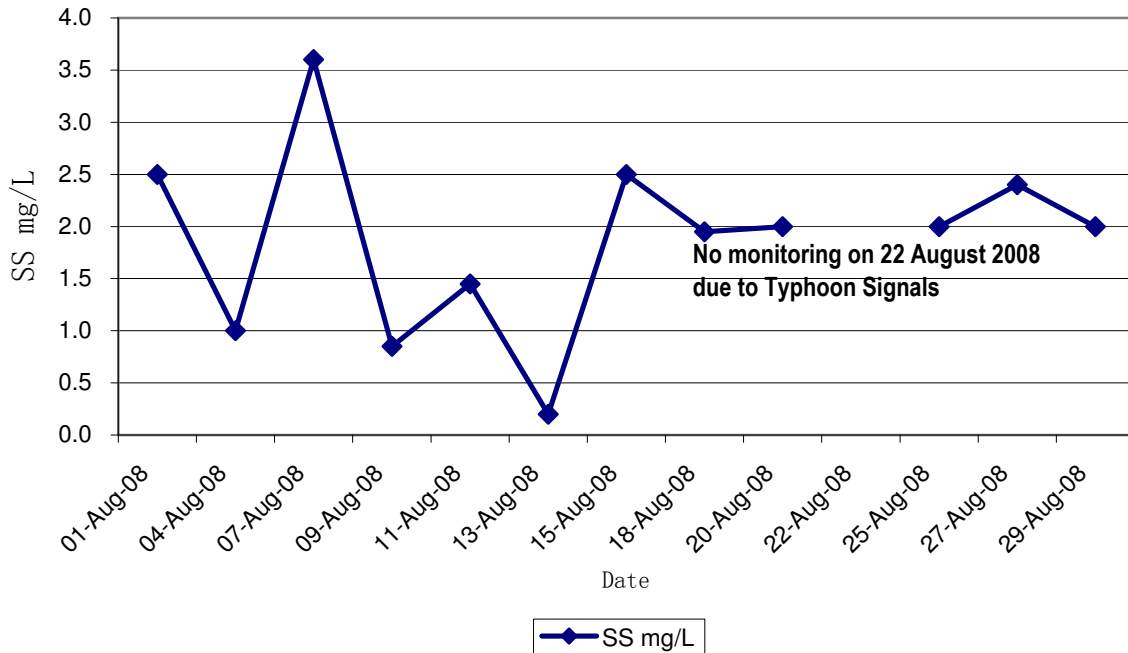
Contract No. DC/2007/12 - Design and Construction of Tsuen Wan Drainage Tunnel
 Water Quality Results at Sik Sik Yuen Ho Fung College (I-1-C)
 August 2008



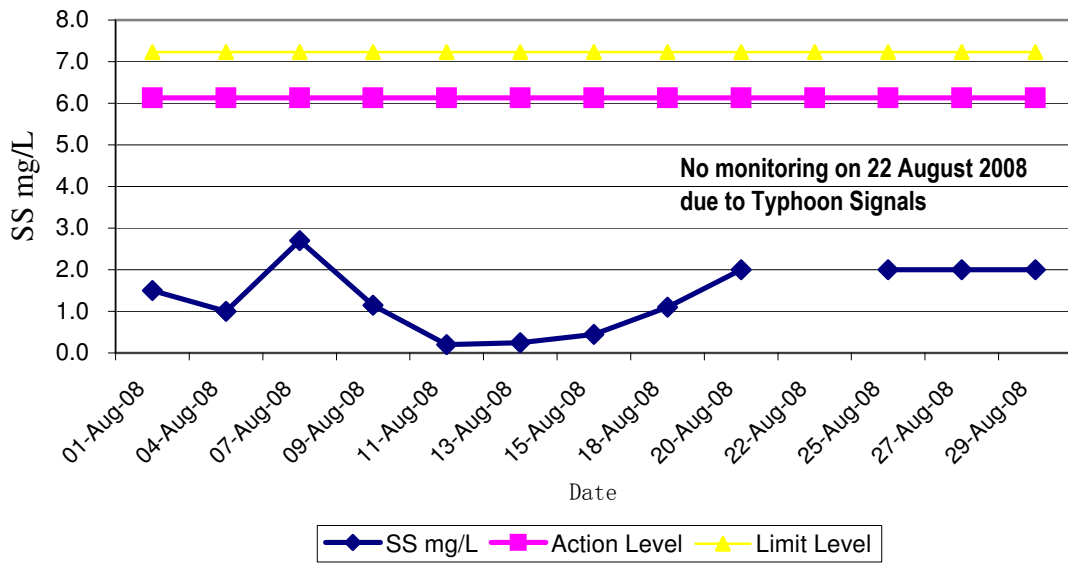
Contract No. DC/2007/12 - Design and Construction of Tsuen Wan Drainage Tunnel
 Water Quality Results at Hong Hoi Chee Jong Temple (I-2)
 August 2008



Contract No. DC/2007/12 - Design and Construction of Tsuen Wan Drainage Tunnel
 Water Quality Results at Hong Hoi Chee Jong Temple (I-2-C)
 August 2008



Contract No. DC/2007/12 - Design and Construction of Tsuen Wan Drainage Tunnel
 Water Quality Results at Squatters (I-3)
 August 2008



Contract No. DC/2007/12 - Design and Construction of Tsuen Wan Drainage Tunnel
 Water Quality Results at Squatters (I-3-C)
 August 2008

