

Interim Notification of Environmental Quality Limit Exceedance

Incident Report on Limit Level Non-compliance

Project	Tsuen Wan Drainage Tunnel
Date	06-Apr-11
Time	10:25 AM
Monitoring Location	Sik Sik Yuen Ho Fung College (I-1)
Parameter	Suspended Solids
Action & Limit Levels (mg/L)	8.85 / 10.17
Measured Level (mg/L)	10.95
Possible reason for Action or Limit Level Non-compliance	A high SS level of 10.60 mg/L was recorded at Control Station (I-1-C)
Actions taken / to be taken	The measured SS level was above the baseline limit level, but lower than 120% of SS level of the control station (I-1-C). General site cleaning, rebar fixing at cascade bay 1, dismantling of formwork at vehicle access, removal of hoarding and masonry wall and geotechnical instrumentation monitoring were undertaken during the measurement. No direct disturbance was observed from the site. Thus, the exceedance was considered to be contributed by high SS level at upstream location and natural variation. Therefore, no action was required.
Remarks	Following mitigation measures were provided: (1) Waste water was collected and diverted to on-site waste water treatment plant for treatment before discharge; and (2) Nullah and site area were separated by sealed concrete block.

Prepared by: Fan Cheong Tsang
 Designation: Environmental Team Leader

Signature: 

Date: 12-Apr-11

Photographic record for exceedance of Suspended Solids recorded at Sik Sik Yuen Ho Fung College (I-1) on 06-Apr-11



Site photo



Photo taken at I-1



Photo taken at I-1-C

Interim Notification of Environmental Quality Limit Exceedance

Incident Report on Action Level Non-compliance

Project	Tsuen Wan Drainage Tunnel
Date	08-Apr-11
Time	2:37 PM
Monitoring Location	Sik Sik Yuen Ho Fung College (I-1)
Parameter	Suspended Solids
Action & Limit Levels (mg/L)	8.85 / 10.17
Measured Level (mg/L)	9.45
Possible reason for Action or Limit Level Non-compliance	A high SS level of 10.00 mg/L was recorded at Control Station (I-1-C)
Actions taken / to be taken	The measured SS level was above the baseline action level, but lower than the SS level of the control station (I-1-C). General site cleaning, rebar fixing at cascade bay 3, formwork prepaing, removal of masonry wall, pipe roof corning drilling and geotechnical instrumentation monitoring were undertaken during the measurement. No direct disturbance was observed from the site. Thus, the exceedance was considered to be contributed by high SS level of the upstream location and natural variation. Therefore, no action was required.
Remarks	The following mitigation measures were provided: (1) Waste water was collected and diverted to waste water treatment plant for treatment before discharge; (2) Nullah and site area were separated by sealed concrete block.

Prepared by: Fan Cheong Tsang
 Designation: Environmental Team Leader

Signature: 

Date: 18-Apr-11

Photographic record for exceedance of Suspended Solids recorded at Sik Sik Yuen Ho Fung College (I-1) on 08-Apr-11



Site photo



Photo taken at I-1



Photo taken at I-1-C

Interim Notification of Environmental Quality Limit Exceedance

Incident Report on Action Level Non-compliance

Project	Tsuen Wan Drainage Tunnel
Date	08-Apr-11
Time	9:12 AM
Monitoring Location	O-1(FT)
Parameter	Suspended Solids (SS)
Action & Limit Levels (mg/L)	14.10 / 18.08 (derived from the baseline monitoring data)
Measured Level (depth-averaged) at Monitoring Location (mg/L)	5.35
Control Station	O-1-C(FT)
Measured Level (depth averaged) at Control Station (mg/L)	4.20
Possible reason for Action or Limit Level Non-compliance	The measured SS level (depth-averaged) at O-1(FT) was below the baseline action/limit level but was higher than 120% of the control station's SS level (O-1-C(FT)) at the same tide of the same day. Only laying non-woven geo-textile and backfilling grade 200 rockfill behind installed seawall blocks were undertaken and there was no other marine works during monitoring. Silt curtain was deployed along the Portion E boundary line and extended from seawater level to seabed. Floating type silt curtain was also employed at the inner side. As such, the exceedance was considered to be contributed by natural variation and no further action was required.
Actions taken / to be taken	(1) Silt curtain had been provided along the Portion E boundary line and extended from seawater level to the bottom of seabed; (2) Floating type silt curtain had been employed at the inner side; (3) Sufficient slack of silt curtain was allowed to cope with the wave and tidal action to ensure the curtains (outer and inner) were rested on seabed; (4) condition of silt curtain was checked by the supervisor daily; (5) and seawall blocks installation was undertaken within the inner silt curtain area only.
Remarks	None

Prepared by: F. C. Tsang
 Designation: Environmental Team Leader
 Signature:



Date: 18-Apr-11

Photographic record for exceedance of Suspended Solids (SS) recorded at O-1(FT) on 08-Apr-11



Site photo

Interim Notification of Environmental Quality Limit Exceedance

Incident Report on Action Level Non-compliance

Project	Tsuen Wan Drainage Tunnel
Date	11-Apr-11
Time	10:20 AM
Monitoring Location	O-1(FT)
Parameter	Suspended Solids (SS)
Action & Limit Levels (mg/L)	14.10 / 18.08 (derived from the baseline monitoring data)
Measured Level (depth-averaged) at Monitoring Location (mg/L)	5.27
Control Station	O-1-C(FT)
Measured Level (depth averaged) at Control Station (mg/L)	4.27
Possible reason for Action or Limit Level Non-compliance	The measured SS level (depth-averaged) at O-1(FT) was below the baseline action/limit level but was higher than 120% of the control station's SS level (O-1-C(FT)) at the same tide of the same day. Only installation of temporary concrete blocks and placing leveling stone were undertaken and there was no other marine works during monitoring. Silt curtain was deployed along the Portion E boundary line and extended from seawater level to seabed. Floating type silt curtain was also employed at the inner side. As such, the exceedance was considered to be contributed by natural variation and no further action was required.
Actions taken / to be taken	(1) Silt curtain had been provided along the Portion E boundary line and extended from seawater level to the bottom of seabed; (2) Floating type silt curtain had been employed at the inner side; (3) Sufficient slack of silt curtain was allowed to cope with the wave and tidal action to ensure the curtains (outer and inner) were rested on seabed; (4) condition of silt curtain was checked by the supervisor daily; (5) and seawall blocks installation was undertaken within the inner silt curtain area only.
Remarks	None

Prepared by: F. C. Tsang
 Designation: Environmental Team Leader

Signature: 

Date: 18-Apr-11

Photographic record for exceedance of Suspended Solids (SS) recorded at O-1(FT) on 11-Apr-11



Site photo

Interim Notification of Environmental Quality Limit Exceedance

Incident Report on Action Level Non-compliance

Project	Tsuen Wan Drainage Tunnel
Date	13-Apr-11
Time	2:33 PM
Monitoring Location	O-1(FT)
Parameter	Suspended Solids (SS)
Action & Limit Levels (mg/L)	14.10 / 18.08 (derived from the baseline monitoring data)
Measured Level (depth-averaged) at Monitoring Location (mg/L)	3.90
Control Station	O-1-C(FT)
Measured Level (depth averaged) at Control Station (mg/L)	3.03
Possible reason for Action or Limit Level Non-compliance	The measured SS level (depth-averaged) at O-1(FT) was below the baseline action/limit level but was higher than 120% of the control station's SS level (O-1-C(FT)) at the same tide of the same day. Only installation of bagged concrete for seawall formation was undertaken and there was no other marine works during monitoring. Silt curtain was deployed along the Portion E boundary line and extended from seawater level to seabed. Floating type silt curtain was also employed at the inner side. As such, the exceedance was considered to be contributed by natural variation and no further action was required.
Actions taken / to be taken	(1) Silt curtain had been provided along the Portion E boundary line and extended from seawater level to the bottom of seabed; (2) floating type silt curtain had been employed at the inner side; (3) sufficient slack of silt curtain was allowed to cope with the wave and tidal action to ensure the curtains (outer and inner) were rested on seabed; (4) condition of silt curtain was checked by the supervisor daily; (5) and seawall blocks installation was undertaken within the inner silt curtain area only.
Remarks	None

Prepared by: F. C. Tsang
 Designation: Environmental Team Leader

Signature: 

Date: 20-Apr-11

Photographic record for exceedance of Suspended Solids (SS) recorded at O-1(FT) on 13-Apr-11



Site photo

Interim Notification of Environmental Quality Limit Exceedance

Incident Report on Action Level Non-compliance

Project	Tsuen Wan Drainage Tunnel
Date	18-Apr-11
Time	9:20 AM
Monitoring Location	Sik Sik Yuen Ho Fung College (I-1)
Parameter	Suspended Solids
Action & Limit Levels (mg/L)	8.85 / 10.17
Measured Level (mg/L)	2.70
Possible reason for Action or Limit Level Non-compliance	A low SS level of 2.10 mg/L was recorded at Control Station (I-1-C)
Actions taken / to be taken	The measured SS level was below the baseline action level, but higher than 120% of SS level of the control station (I-1-C). General site cleaning, formwork at Cascade Bay 3 and 4, construction of H-pile platform, pipe roof drilling and geotechnical instrumentation monitoring were undertaken during the measurement. No direct disturbance was observed from the site. Thus, the exceedance was considered to be contributed by natural variation and no action was required.
Remarks	The following mitigation measures were provided: (1) Waste water was collected and diverted to waste water treatment plant for treatment before discharge; (2) Nullah and site area were separated by sealed concrete block.

Prepared by: Fan Cheong Tsang

Designation: Environmental Team Leader

Signature:



Date: 29-Apr-11

Photographic record for exceedance of Suspended Solids recorded at Sik Sik Yuen Ho Fung College (I-1) on 18-Apr-11



Site photo



Photo taken at I-1



Photo taken at I-1-C

Interim Notification of Environmental Quality Limit Exceedance

Incident Report on Action Level Non-compliance

Project	Tsuen Wan Drainage Tunnel
Date	07-May-11
Time	8:45 AM
Monitoring Location	O-1(FT)
Parameter	Dissolved Oxygen (marine surface)
Action & Limit Levels (mg/L)	6.84 / 6.81
Measured Level (mg/L)	6.81
Control Station	O-1-C(FT)
Measured Level at the Control Station (mg/L)	6.99
Possible reason for Action or Limit Level Non-compliance	The measured DO level (marine surface) was below the baseline action level but was within the ranges of 3-year (2007 - 2009) marine surface DO records between 4.3 and 9.4 mg/L at EPD WM4 marine water quality monitoring station near Ma Wan and between 4.2 and 8.6 mg/L at EPD VM14 marine water quality monitoring station towards the north of Rambler Channel. Adjusting level of installed seawall blocks and survey check on installed seawall blocks were conducted at the Outfall basin (Portion E) during monitoring. Since there was no other marine works conducted during the monitoring, the exceedance was considered to be contributed by natural variation and no further action was required.
Actions taken / to be taken	(1) Silt curtain was provided along the Portion E boundary line and extended from seawater level to the bottom of seabed; (2) floating type silt curtain was employed at the inner side; (3) sufficient slack of silt curtain was allowed to cope with the wave and tidal action to ensure the curtains (outer and inner) were rested on seabed; (4) condition of silt curtains was checked by the supervisor daily; and (5) seawall blocks installation was undertaken within the inner silt curtain area only.
Remarks	None

Prepared by: F. C. Tsang
 Designation: Environmental Team Leader

Signature: 

Date: 13-May-11

Photographic record for exceedance of Dissolved Oxygen (marine surface) recorded at O-1(FT) on 07-May-11



Site photo

Interim Notification of Environmental Quality Limit Exceedance

Incident Report on Limit Level Non-compliance

Project	Tsuen Wan Drainage Tunnel
Date	07-May-11
Time	8:45 AM
Monitoring Location	O-1(FT)
Parameter	Dissolved Oxygen (marine mid-depth)
Action & Limit Levels (mg/L)	6.84 / 6.81
Measured Level (mg/L)	6.79
Control Station	O-1-C(FT)
Measured Level at the Control Station (mg/L)	6.91
Possible reason for Action or Limit Level Non-compliance	The measured DO level (marine mid-depth) was below the baseline limit level but was within the ranges of 3-year (2007 - 2009) marine mid-depth DO records between 2.6 and 9.1 mg/L at EPD WM4 marine water quality monitoring station near Ma Wan and between 3.9 and 8.5 mg/L at EPD VM14 marine water quality monitoring station towards the north of Rambler Channel. Adjusting level of installed seawall blocks and survey check on installed seawall blocks were conducted at the Outfall basin (Portion E) during monitoring. Since there was no other marine works conducted during the monitoring, the exceedance was considered to be contributed by natural variation and no further action was required.
Actions taken / to be taken	(1) Silt curtain was provided along the Portion E boundary line and extended from seawater level to the bottom of seabed; (2) floating type silt curtain was employed at the inner side; (3) sufficient slack of silt curtain was allowed to cope with the wave and tidal action to ensure the curtains (outer and inner) were rested on seabed; (4) condition of silt curtains was checked by the supervisor daily; and (5) seawall blocks installation was undertaken within the inner silt curtain area only.
Remarks	None

Prepared by: F. C. Tsang
 Designation: Environmental Team Leader

Signature: 

Date: 13-May-11

Photographic record for exceedance of Dissolved Oxygen (marine mid-depth) recorded at O-1(FT) on 07-May-11



Site photo

Interim Notification of Environmental Quality Limit Exceedance

Incident Report on Limit Level Non-compliance

Project	Tsuen Wan Drainage Tunnel
Date	07-May-11
Time	8:45 AM
Monitoring Location	O-1(FT)
Parameter	Dissolved Oxygen (marine bottom)
Action & Limit Levels (mg/L)	6.99 / 6.96
Measured Level (mg/L)	6.91
Control Station	O-1-C(FT)
Measured Level at the Control Station (mg/L)	6.78
Possible reason for Action or Limit Level Non-compliance	The measured DO level (marine bottom) was below the baseline limit level but was within the ranges of 3-year (2007 - 2009) marine bottom DO records between 2.2 and 8.8 mg/L at EPD WM4 marine water quality monitoring station near Ma Wan and between 3.4 and 8.6 mg/L at EPD VM14 marine water quality monitoring station towards the north of Rambler Channel. Adjusting level of installed seawall blocks and survey check on installed seawall blocks were conducted at the Outfall basin (Portion E) during monitoring. Since there was no other marine works conducted during the monitoring, the exceedance was considered to be contributed by natural variation and no further action was required.
Actions taken / to be taken	(1) Silt curtain was provided along the Portion E boundary line and extended from seawater level to the bottom of seabed; (2) floating type silt curtain was employed at the inner side; (3) sufficient slack of silt curtain was allowed to cope with the wave and tidal action to ensure the curtains (outer and inner) were rested on seabed; (4) condition of silt curtains was checked by the supervisor daily; and (5) seawall blocks installation was undertaken within the inner silt curtain area only.
Remarks	None

Prepared by: F. C. Tsang
 Designation: Environmental Team Leader

Signature:



Date: 13-May-11

Photographic record for exceedance of Dissolved Oxygen (marine bottom) recorded at O-1(FT) on 07-May-11



Site photo

Interim Notification of Environmental Quality Limit Exceedance

Incident Report on Limit Level Non-compliance

Project	Tsuen Wan Drainage Tunnel
Date	07-May-11
Time	12:28 PM
Monitoring Location	O-1(ET)
Parameter	Dissolved Oxygen (marine surface)
Action & Limit Levels (mg/L)	7.02 / 6.94
Measured Level (mg/L)	6.90
Control Station	O-1-C(ET)
Measured Level at the Control Station (mg/L)	6.88
Possible reason for Action or Limit Level Non-compliance	The measured DO level (marine surface) was below the baseline limit level but was within the ranges of 3-year (2007 - 2009) marine surface DO records between 4.3 and 9.4 mg/L at EPD WM4 marine water quality monitoring station near Ma Wan and between 4.2 and 8.6 mg/L at EPD VM14 marine water quality monitoring station towards the north of Rambler Channel. Adjusting level of installed seawall blocks and survey check on installed seawall blocks were conducted at the Outfall basin (Portion E) during monitoring. Since there was no other marine works conducted during the monitoring, the exceedance was considered to be contributed by natural variation and no further action was required.
Actions taken / to be taken	(1) Silt curtain was provided along the Portion E boundary line and extended from seawater level to the bottom of seabed; (2) floating type silt curtain was employed at the inner side; (3) sufficient slack of silt curtain was allowed to cope with the wave and tidal action to ensure the curtains (outer and inner) were rested on seabed; (4) condition of silt curtains was checked by the supervisor daily; and (5) seawall blocks installation was undertaken within the inner silt curtain area only.
Remarks	None

Prepared by: F. C. Tsang
 Designation: Environmental Team Leader

Signature: 

Date: 13-May-11

Photographic record for exceedance of Dissolved Oxygen (marine surface) recorded at O-1(ET) on 07-May-11



Site photo



Site photo

Interim Notification of Environmental Quality Limit Exceedance

Incident Report on Limit Level Non-compliance

Project	Tsuen Wan Drainage Tunnel
Date	07-May-11
Time	12:28 PM
Monitoring Location	O-1(ET)
Parameter	Dissolved Oxygen (marine mid-depth)
Action & Limit Levels (mg/L)	7.02 / 6.94
Measured Level (mg/L)	6.84
Control Station	O-1-C(ET)
Measured Level at the Control Station (mg/L)	6.76
Possible reason for Action or Limit Level Non-compliance	The measured DO level (marine mid-depth) was below the baseline limit level but was within the ranges of 3-year (2007 - 2009) marine mid-depth DO records between 2.6 and 9.1 mg/L at EPD WM4 marine water quality monitoring station near Ma Wan and between 3.9 and 8.5 mg/L at EPD VM14 marine water quality monitoring station towards the north of Rambler Channel. Adjusting level of installed seawall blocks and survey check on installed seawall blocks were conducted at the Outfall basin (Portion E) during monitoring. Since there was no other marine works conducted during the monitoring, the exceedance was considered to be contributed by natural variation and no further action was required.
Actions taken / to be taken	(1) Silt curtain was provided along the Portion E boundary line and extended from seawater level to the bottom of seabed; (2) floating type silt curtain was employed at the inner side; (3) sufficient slack of silt curtain was allowed to cope with the wave and tidal action to ensure the curtains (outer and inner) were rested on seabed; (4) condition of silt curtains was checked by the supervisor daily; and (5) seawall blocks installation was undertaken within the inner silt curtain area only.
Remarks	None

Prepared by: F. C. Tsang
 Designation: Environmental Team Leader

Signature: 

Date: 13-May-11

Photographic record for exceedance of Dissolved Oxygen (marine mid-depth) recorded at O-1(ET) on 07-May-11



Site photo



Site photo

Interim Notification of Environmental Quality Limit Exceedance

Incident Report on Action Level Non-compliance

Project	Tsuen Wan Drainage Tunnel
Date	03-May-11
Time	5:35 PM
Monitoring Location	O-1(FT)
Parameter	Suspended Solids (SS)
Action & Limit Levels (mg/L)	14.10 / 18.08 (derived from the baseline monitoring data)
Measured Level (depth-averaged) at Monitoring Location (mg/L)	8.45
Control Station	O-1-C(FT)
Measured Level (depth averaged) at Control Station (mg/L)	6.97
Possible reason for Action or Limit Level Non-compliance	The measured SS level (depth-averaged) at O-1(FT) was below the baseline action/limit level but was higher than 120% of the control station's SS level (O-1-C(FT)) at the same tide of the same day. Only placing seawall blocks was undertaken and there was no other marine works conducted during the monitoring. Silt curtain was deployed along the Portion E boundary line and extended from seawater level to seabed. Floating type silt curtain was also employed at the inner side. As such, the exceedance was considered to be contributed by natural variation and no further action was required.
Actions taken / to be taken	(1) Silt curtain was provided along the Portion E boundary line and extended from seawater level to the bottom of seabed; (2) floating type silt curtain was employed at the inner side; (3) sufficient slack of silt curtain was allowed to cope with the wave and tidal action to ensure the curtains (outer and inner) were rested on seabed; (4) condition of silt curtains was checked by the supervisor daily; and (5) seawall blocks installation was undertaken within the inner silt curtain area only.
Remarks	None

Prepared by: F. C. Tsang
 Designation: Environmental Team Leader

Signature:



Date: 13-May-11

Photographic record for exceedance of Suspended Solids (SS) recorded at O-1(FT) on 03-May-11




Site photo

Interim Notifications of Environmental Quality Limits Exceedances

Incident Report on Limit Level Non-compliance

Project	Tsuen Wan Drainage Tunnel
Date	13-May-11
Time	10:20 AM
Monitoring Location	Squatters (I-3)
Parameter	Turbidity
Action & Limit Levels (NTU)	3.99 / 4.18
Measured Level (NTU)	19.08
Control Station	I-3-C
Measured Level at the Control Station (NTU)	19.19
Possible reason for Action or Limit Level Non-compliance	The measured turbidity level was higher than baseline limit level, but lower than the turbidity level of the control station (I-3-C). General site cleaning and housekeeping, monitoring of deformation monitoring point (DMP), drilling and rock breaking in shaft, installation of concrete blocks in shaft, digging trail pit and breaking of blinding layer at PB wall were undertaken during measurement. No direct disturbance was observed from the site and 33.5 mm rainfall was recorded on the same day. The exceedance was considered to be contributed by high turbidity level at upstream location and rainfall. Since the exceedance was non-projected related, no further action was required.
Actions taken / to be taken	The following mitigation measures were provided on-site during monitoring: (1) All waste water were collected and diverted to waste water treatment plant prior to discharge; (2) Existing stream was diverted and bunded by sealed concrete block wall; and (3) Excavated area had been bunded and sealed by concrete block wall to prevent any excavated material runoff from working area.
Remarks	None

Prepared by: Fan Cheong Tsang
 Designation: Environmental Team Leader
 Signature: 
 Date: 16-May-11

Photographic record for exceedance of Turbidity recorded at Squatters (I-3) on 13-May-11



Site photo



Photo taken at I-3



Photo taken at I-3-C

Interim Notification of Environmental Quality Limit Exceedance

Incident Report on Limit Level Non-compliance

Project	Tsuen Wan Drainage Tunnel
Date	13-May-11
Time	2:32 PM
Monitoring Location	O-1(FT)
Parameter	Dissolved Oxygen (marine bottom)
Action & Limit Levels (mg/L)	6.99 / 6.96
Measured Level (mg/L)	6.83
Control Station	O-1-C(FT)
Measured Level at the Control Station (mg/L)	6.89
Possible reason for Action or Limit Level Non-compliance	The measured DO level (marine bottom) was below the baseline limit level but was within the ranges of 3-year (2007 - 2009) marine bottom DO records between 2.2 and 8.8 mg/L at EPD WM4 marine water quality monitoring station near Ma Wan and between 3.4 and 8.6 mg/L at EPD VM14 marine water quality monitoring station towards the north of Rambler Channel. Loading seawall blocks onto installed seawall blocks and preparation work for geotextile were conducted at the Outfall basin (Portion E) during monitoring. Since there was no other marine works conducted during the monitoring, the exceedance was considered to be contributed by natural variation and no further action was required.
Actions taken / to be taken	(1) Silt curtain was provided along the Portion E boundary line and extended from seawater level to the bottom of seabed; (2) floating type silt curtain was employed at the inner side; (3) sufficient slack of silt curtain was allowed to cope with the wave and tidal action to ensure the curtains (outer and inner) were rested on seabed; (4) condition of silt curtains was checked by the supervisor daily; and (5) seawall blocks installation was undertaken within the inner silt curtain area only.
Remarks	None

Prepared by: F. C. Tsang
 Designation: Environmental Team Leader

Signature: 

Date: 16-May-11

Photographic record for exceedance of Dissolved Oxygen (marine bottom) recorded at O-1(FT) on 13-May-11



Site photo

Interim Notification of Environmental Quality Limit Exceedance

Incident Report on Limit Level Non-compliance

Project	Tsuen Wan Drainage Tunnel
Date	13-May-11
Time	9:40 AM
Monitoring Location	O-1(ET)
Parameter	Dissolved Oxygen (marine surface)
Action & Limit Levels (mg/L)	7.02 / 6.94
Measured Level (mg/L)	6.90
Control Station	O-1-C(ET)
Measured Level at the Control Station (mg/L)	7.08
Possible reason for Action or Limit Level Non-compliance	The measured DO level (marine surface) was below the baseline limit level but was within the ranges of 3-year (2007 - 2009) marine surface DO records between 4.3 and 9.4 mg/L at EPD WM4 marine water quality monitoring station near Ma Wan and between 4.2 and 8.6 mg/L at EPD VM14 marine water quality monitoring station towards the north of Rambler Channel. Loading seawall blocks onto installed seawall blocks and preparation work for geotextile were conducted at the Outfall basin (Portion E) during monitoring. Since there was no other marine works conducted during the monitoring, the exceedance was considered to be contributed by natural variation and no further action was required.
Actions taken / to be taken	(1) Silt curtain was provided along the Portion E boundary line and extended from seawater level to the bottom of seabed; (2) floating type silt curtain was employed at the inner side; (3) sufficient slack of silt curtain was allowed to cope with the wave and tidal action to ensure the curtains (outer and inner) were rested on seabed; (4) condition of silt curtains was checked by the supervisor daily; and (5) seawall blocks installation was undertaken within the inner silt curtain area only.
Remarks	None

Prepared by: F. C. Tsang
 Designation: Environmental Team Leader

Signature: 

Date: 13-May-11

Photographic record for exceedance of Dissolved Oxygen (marine surface) recorded at O-1(ET) on 13-May-11



Site photo



Site photo

Interim Notification of Environmental Quality Limit Exceedance

Incident Report on Limit Level Non-compliance

Project	Tsuen Wan Drainage Tunnel
Date	13-May-11
Time	9:40 AM
Monitoring Location	O-1(ET)
Parameter	Dissolved Oxygen (marine mid-depth)
Action & Limit Levels (mg/L)	7.02 / 6.94
Measured Level (mg/L)	6.85
Control Station	O-1-C(ET)
Measured Level at the Control Station (mg/L)	7.01
Possible reason for Action or Limit Level Non-compliance	The measured DO level (marine mid-depth) was below the baseline limit level but was within the ranges of 3-year (2007 - 2009) marine mid-depth DO records between 2.6 and 9.1 mg/L at EPD WM4 marine water quality monitoring station near Ma Wan and between 3.9 and 8.5 mg/L at EPD VM14 marine water quality monitoring station towards the north of Rambler Channel. Loading seawall blocks onto installed seawall blocks and preparation work for geotextile were conducted at the Outfall basin (Portion E) during monitoring. Since there was no other marine works conducted during the monitoring, the exceedance was considered to be contributed by natural variation and no further action was required.
Actions taken / to be taken	(1) Silt curtain was provided along the Portion E boundary line and extended from seawater level to the bottom of seabed; (2) floating type silt curtain was employed at the inner side; (3) sufficient slack of silt curtain was allowed to cope with the wave and tidal action to ensure the curtains (outer and inner) were rested on seabed; (4) condition of silt curtains was checked by the supervisor daily; and (5) seawall blocks installation was undertaken within the inner silt curtain area only.
Remarks	None

Prepared by: F. C. Tsang
 Designation: Environmental Team Leader

Signature:



Date: 16-May-11

Photographic record for exceedance of Dissolved Oxygen (marine mid-depth) recorded at O-1(ET) on 13-May-11



Site photo



Site photo

Interim Notification of Environmental Quality Limit Exceedance

Incident Report on Action Level Non-compliance

Project	Tsuen Wan Drainage Tunnel
Date	18-May-11
Time	5:30 PM
Monitoring Location	O-1(FT)
Parameter	Dissolved Oxygen (marine surface)
Action & Limit Levels (mg/L)	6.84 / 6.81
Measured Level (mg/L)	6.81
Control Station	O-1-C(FT)
Measured Level at the Control Station (mg/L)	6.90
Possible reason for Action or Limit Level Non-compliance	The measured DO level (marine surface) was below the baseline action level but was within the ranges of 3-year (2007 - 2009) marine surface DO records between 4.3 and 9.4 mg/L at EPD WM4 marine water quality monitoring station near Ma Wan and between 4.2 and 8.6 mg/L at EPD VM14 marine water quality monitoring station towards the north of Rambler Channel. Adjusting level of installed seawall blocks was conducted at the Outfall basin (Portion E) during monitoring and there was no other marine works conducted. Since the difference between DO level at impact and control station was around 1.3% and the DO level at impact station was only 0.03 mg/L lower than the baseline action level, the exceedance was considered to be contributed by natural variation and no further action was required.
Actions taken / to be taken	(1) Silt curtain was provided along the Portion E boundary line and extended from seawater level to the bottom of seabed; (2) floating type silt curtain was employed at the inner side; (3) sufficient slack of silt curtain was allowed to cope with the wave and tidal action to ensure the curtains (outer and inner) were rested on seabed; (4) condition of silt curtains was checked by the supervisor daily; and (5) seawall blocks installation was undertaken within the inner silt curtain area only.
Remarks	None

Prepared by: F. C. Tsang

Designation: Environmental Team Leader

Signature:



Date: 19-May-11

Photographic record for exceedance of Dissolved Oxygen (marine surface) recorded at O-1(FT) on 18-May-11



Site photo

Interim Notification of Environmental Quality Limit Exceedance

Incident Report on Limit Level Non-compliance

Project	Tsuen Wan Drainage Tunnel
Date	18-May-11
Time	5:30 PM
Monitoring Location	O-1(FT)
Parameter	Dissolved Oxygen (marine mid-depth)
Action & Limit Levels (mg/L)	6.84 / 6.81
Measured Level (mg/L)	6.78
Control Station	O-1-C(FT)
Measured Level at the Control Station (mg/L)	6.79
Possible reason for Action or Limit Level Non-compliance	The measured DO level (marine mid-depth) was below the baseline limit level but was within the ranges of 3-year (2007 - 2009) marine mid-depth DO records between 2.6 and 9.1 mg/L at EPD WM4 marine water quality monitoring station near Ma Wan and between 3.9 and 8.5 mg/L at EPD VM14 marine water quality monitoring station towards the north of Rambler Channel. Adjusting level of installed seawall blocks was conducted at the Outfall basin (Portion E) during monitoring and there was no other marine works conducted. Since both DO levels at impact station and control station were just below the baseline limit level and the difference between them was only 0.01 mg/L, the exceedance was considered to be contributed by natural variation and no further action was required.
Actions taken / to be taken	(1) Silt curtain was provided along the Portion E boundary line and extended from seawater level to the bottom of seabed; (2) floating type silt curtain was employed at the inner side; (3) sufficient slack of silt curtain was allowed to cope with the wave and tidal action to ensure the curtains (outer and inner) were rested on seabed; (4) condition of silt curtains was checked by the supervisor daily; and (5) seawall blocks installation was undertaken within the inner silt curtain area only.
Remarks	None

Prepared by: F. C. Tsang

Designation: Environmental Team Leader

Signature:



Date: 19-May-11

Photographic record for exceedance of Dissolved Oxygen (marine mid-depth) recorded at O-1(FT) on 18-May-11



Site photo

Interim Notification of Environmental Quality Limit Exceedance

Incident Report on Action Level Non-compliance

Project	Tsuen Wan Drainage Tunnel
Date	18-May-11
Time	5:30 PM
Monitoring Location	O-1(FT)
Parameter	Dissolved Oxygen (marine bottom)
Action & Limit Levels (mg/L)	6.99 / 6.96
Measured Level (mg/L)	6.98
Control Station	O-1-C(FT)
Measured Level at the Control Station (mg/L)	6.74
Possible reason for Action or Limit Level Non-compliance	The measured DO level (marine bottom) was below the baseline action level but was within the ranges of 3-year (2007 - 2009) marine bottom DO records between 2.2 and 8.8 mg/L at EPD WM4 marine water quality monitoring station near Ma Wan and between 3.4 and 8.6 mg/L at EPD VM14 marine water quality monitoring station towards the north of Rambler Channel. Adjusting level of installed seawall blocks was conducted at the Outfall basin (Portion E) during monitoring and there was no other marine works conducted. Since the DO level at impact station was just below the baseline action level and the DO level at impact station was higher than that at control station, the exceedance was considered to be contributed by natural variation and no further action was required.
Actions taken / to be taken	(1) Silt curtain was provided along the Portion E boundary line and extended from seawater level to the bottom of seabed; (2) floating type silt curtain was employed at the inner side; (3) sufficient slack of silt curtain was allowed to cope with the wave and tidal action to ensure the curtains (outer and inner) were rested on seabed; (4) condition of silt curtains was checked by the supervisor daily; and (5) seawall blocks installation was undertaken within the inner silt curtain area only.
Remarks	None

Prepared by: F. C. Tsang

Designation: Environmental Team Leader

Signature:



Date: 19-May-11

Photographic record for exceedance of Dissolved Oxygen (marine bottom) recorded at O-1(FT) on 18-May-11




Site photo

Interim Notifications of Environmental Quality Limits Exceedances

Incident Report on Limit Level Non-compliance

Project	Tsuen Wan Drainage Tunnel
Date	13-May-11
Time	10:55 AM
Monitoring Location	Hong Hoi Chee Hong Temple (I-2)
Parameter	Suspended Solid
Action & Limit Levels (mg/L)	7.68 / 8.34
Measured Level (mg/L)	6.30
Control Station	I-2-C
Measured Level at the Control Station (mg/L)	4.10
Possible reason for Action or Limit Level Non-compliance	The measured SS level was below than baseline action level, but higher than 130% of the SS level of the control station (I-2-C). General site cleaning, housekeeping and temporary traffic arrangement, rock splitting and mucking at vortex drop shaft, drilling holes for rock splitting, construction of H-pile and excavation for pipe jacking at Portion G were undertaken during measurement. No direct disturbance was observed from the site and about 33.5 mm rainfall was recorded on the same day. The exceedance was considered to be contributed by natural variation and high rainfall. Since the exceedance was non-projected related, no further action was required.
Actions taken / to be taken	The following mitigation measures were provided on-site during monitoring: (1) All waste water were collected and diverted to waste water treatment plant prior to discharge; (2) Existing stream was diverted and bunded by sealed concrete block wall; and (3) Existing stream was bunded off by sand bags to prevent any excavated material washing out from working area.
Remarks	None

Prepared by: Fan Cheong Tsang
 Designation: Environmental Team Leader
 Signature: 
 Date: 24-May-11

Photographic record for exceedance of Suspended Solid recorded at Hong Hoi Chee Hong Temple (I-2) on 13-May-11



Site photo



Photo taken at I-2




Photo taken at I-2-C

Interim Notifications of Environmental Quality Limits Exceedances

Incident Report on Limit Level Non-compliance

Project	Tsuen Wan Drainage Tunnel
Date	13-May-11
Time	10:20 AM
Monitoring Location	Squatters (I-3)
Parameter	Suspended Solid
Action & Limit Levels (mg/L)	6.13 / 7.23
Measured Level (mg/L)	21.50
Control Station	I-3-C
Measured Level at the Control Station (mg/L)	22.15
Possible reason for Action or Limit Level Non-compliance	The measured SS level was higher than baseline limit level, but lower than the SS level of the control station (I-3-C). General site cleaning and housekeeping, monitoring of deformation monitoring point (DMP), drilling and rock breaking in shaft, installation of concrete blocks in shaft, digging trail pit and breaking of blinding layer at PB wall were undertaken during measurement. No direct disturbance was observed from the site and about 33.5 mm rainfall was recorded on the same day. The exceedance was considered to be contributed by high SS level at upstream location and rainfall. Since the exceedance was non-projected related, no further action was required.
Actions taken / to be taken	The following mitigation measures were provided on-site during monitoring: (1) All waste water were collected and diverted to waste water treatment plant prior to discharge; (2) Existing stream was diverted and bunded by sealed concrete block wall; and (3) Excavated area had been bunded and sealed by concrete block wall to prevent any excavated material runoff from working area.
Remarks	None

Prepared by: Fan Cheong Tsang
 Designation: Environmental Team Leader
 Signature: 
 Date: 24-May-11

Photographic record for exceedance of Suspended Solid recorded at Squatters (I-3) on 13-May-11



Site photo



Photo taken at I-3



Photo taken at I-3-C

Interim Notification of Environmental Quality Limit Exceedance

Incident Report on Action Level Non-compliance

Project	Tsuen Wan Drainage Tunnel
Date	20-May-11
Time	1:07 PM
Monitoring Location	O-1(ET)
Parameter	Dissolved Oxygen (marine surface)
Action & Limit Levels (mg/L)	7.02 / 6.94
Measured Level (mg/L)	6.99
Control Station	O-1-C(ET)
Measured Level at the Control Station (mg/L)	6.96
Possible reason for Action or Limit Level Non-compliance	The measured DO level (marine surface) was below the baseline action level but higher than the marine surface DO level of the control station O-1-C(ET). Maintenance of the inner silt curtain was undertaken at the Outfall basin (Portion E) during monitoring and no other marine works was conducted. No direct disturbance from the site was observed. Therefore, the exceedance was considered to be contributed by natural variation and no further action was required.
Actions taken / to be taken	(1) Silt curtain was provided along the Portion E boundary line and extended from seawater level to the bottom of seabed; (2) floating type silt curtain was employed at the inner side; (3) sufficient slack of silt curtain was allowed to cope with the wave and tidal action to ensure the curtains (outer and inner) were rested on seabed; (4) condition of silt curtains was checked by the supervisor daily.
Remarks	None

Prepared by: F. C. Tsang

Designation: Environmental Team Leader

Signature:



Date: 24-May-11

Photographic record for exceedance of Dissolved Oxygen (marine surface) recorded at O-1(ET) on 20-May-11



Site photo



Site photo



Site photo

Interim Notification of Environmental Quality Limit Exceedance

Incident Report on Limit Level Non-compliance

Project	Tsuen Wan Drainage Tunnel
Date	20-May-11
Time	1:07 PM
Monitoring Location	O-1(ET)
Parameter	Dissolved Oxygen (mid-depth)
Action & Limit Levels (mg/L)	7.02 / 6.94
Measured Level (mg/L)	6.92
Control Station	O-1-C(ET)
Measured Level at the Control Station (mg/L)	7.07
Possible reason for Action or Limit Level Non-compliance	The measured DO level (marine mid-depth) was below the baseline limit level and the DO level of the corresponding control station (O-1-C(ET)). Maintenance of the inner silt curtain was undertaken at the Outfall basin (Portion E) during monitoring and no other marine works was conducted. No direct disturbance from the site was observed during monitoring. Therefore, the exceedance was considered to be contributed by natural variation and no further action was required.
Actions taken / to be taken	(1) Silt curtain was provided along the Portion E boundary line and extended from seawater level to the bottom of seabed; (2) floating type silt curtain was employed at the inner side; (3) sufficient slack of silt curtain was allowed to cope with the wave and tidal action to ensure the curtains (outer and inner) were rested on seabed; (4) condition of silt curtains was checked by the supervisor daily.
Remarks	None

Prepared by: F. C. Tsang

Designation: Environmental Team Leader

Signature:



Date: 24-May-11

Photographic record for exceedance of Dissolved Oxygen (mid-depth) recorded at O-1(ET) on 20-May-11



Site photo



Site photo



Site photo

Interim Notification of Environmental Quality Limit Exceedance

Incident Report on Action Level Non-compliance

Project	Tsuen Wan Drainage Tunnel
Date	18-May-11
Time	12:28 PM
Monitoring Location	O-1(ET)
Parameter	Suspended Solids
Action & Limit Levels (mg/L)	13.25 / 14.39
Measured Level (mg/L)	7.02
Control Station	O-1-C(ET)
Measured Level at the Control Station (mg/L)	5.78
Possible reason for Action or Limit Level Non-compliance	The measured SS level was below the baseline action level but was slightly higher than 120% of that of the control station (O-1-C(ET)). Adjusting level of installed seawall blocks was conducted at the Outfall basin (Portion E) during monitoring and there was no other marine works conducted. As no direct disturbance from the site was observed and the measured SS level was relatively low comparing with the baseline action level, the exceedance was considered to be contributed by natural variation and non-project related. Therefore, no further action was required.
Actions taken / to be taken	(1) Silt curtain was provided along the Portion E boundary line and extended from seawater level to the bottom of seabed; (2) floating type silt curtain was employed at the inner side; (3) sufficient slack of silt curtain was allowed to cope with the wave and tidal action to ensure the curtains (outer and inner) were rested on seabed; (4) condition of silt curtains was checked by the supervisor daily; and (5) seawall blocks installation was undertaken within the inner silt curtain area only.
Remarks	None

Prepared by: F. C. Tsang

Designation: Environmental Team Leader

Signature:



Date: 25-May-11

Photographic record for exceedance of Suspended Solids recorded at O-1(ET) on 18-May-11



Site photo



Site photo

Interim Notification of Environmental Quality Limit Exceedance

Incident Report on Limit Level Non-compliance

Project	Tsuen Wan Drainage Tunnel
Date	20-May-11
Time	1:07 PM
Monitoring Location	O-1(ET)
Parameter	Suspended Solids
Action & Limit Levels (mg/L)	13.25 / 14.39
Measured Level (mg/L)	5.75
Control Station	O-1-C(ET)
Measured Level at the Control Station (mg/L)	4.27
Possible reason for Action or Limit Level Non-compliance	The measured SS level at the monitoring station was well below the baseline action level but higher than the 130% of the SS level measured at the control station. Only maintenance of the inner silt curtain was undertaken at the Outfall basin (Portion E) during monitoring and no other marine works was conducted. No direct disturbance from the site was observed. Therefore, the exceedance was considered to be contributed by natural variation and relatively low SS level at the control station. Since the exceedance was non-project related, no further action was required.
Actions taken / to be taken	(1) Silt curtain was provided along the Portion E boundary line and extended from seawater level to the bottom of seabed; (2) floating type silt curtain was employed at the inner side; (3) sufficient slack of silt curtain was allowed to cope with the wave and tidal action to ensure the curtains (outer and inner) were rested on seabed; (4) condition of silt curtains was checked by the supervisor daily.
Remarks	None

Prepared by: F. C. Tsang

Designation: Environmental Team Leader

Signature:



Date: 27-May-11

Photographic record for exceedance of Suspended Solids recorded at O-1(ET) on 20-May-11



Site photo



Site photo



Site photo

Interim Notification of Environmental Quality Limit Exceedance

Incident Report on Action Level Non-compliance

Project	Tsuen Wan Drainage Tunnel
Date	27-May-11
Time	10:40 AM
Monitoring Location	O-1(ET)
Parameter	Dissolved Oxygen (mid-depth)
Action & Limit Levels (mg/L)	7.02 / 6.94
Measured Level (mg/L)	6.98
Control Station	O-1-C(ET)
Measured Level at the Control Station (mg/L)	7.19
Possible reason for Action or Limit Level Non-compliance	The measured DO level (marine mid-depth) was only 0.04 mg/L (about 0.6%) below the baseline action level and was below the DO level of the corresponding control station (O-1-C(ET)). Backfilling grade 700 rockfill and type II armour behind seawall blocks was undertaken at the Outfall basin (Portion E) during monitoring. No other marine works was conducted. No direct disturbance from the site was observed during monitoring. Therefore, the exceedance was considered to be contributed by natural variation and no further action was required.
Actions taken / to be taken	(1) Silt curtain was provided along the Portion E boundary line and extended from seawater level to the bottom of seabed; (2) floating type silt curtain was employed at the inner side; (3) sufficient slack of silt curtain was allowed to cope with the wave and tidal action to ensure the curtains (outer and inner) were rested on seabed; (4) condition of silt curtains was checked by the supervisor daily; and (5) seawall blocks installation was only undertaken within the inner silt curtain area.
Remarks	None

Prepared by: F. C. Tsang

Designation: Environmental Team Leader

Signature:



Date: 01-Jun-11

Photographic record for exceedance of Dissolved Oxygen (mid-depth) recorded at O-1(ET) on 27-May-11



Site photo



Photo taken at O-1(ET)

Interim Notification of Environmental Quality Limit Exceedance

Incident Report on Action Level Non-compliance

Project	Tsuen Wan Drainage Tunnel
Date	30-May-11
Time	9:42 AM
Monitoring Location	O-1(ET)
Parameter	Dissolved Oxygen (Surface)
Action & Limit Levels (mg/L)	7.02 / 6.94
Measured Level (mg/L)	6.97
Control Station	O-1-C(ET)
Measured Level at the Control Station (mg/L)	7.09
Possible reason for Action or Limit Level Non-compliance	The measured DO level (marine surface) at the monitoring station was only 0.05 mg/L (about 0.7%) below the baseline action level and was below the DO level of the corresponding control station. Backfilling type II armour behind seawall blocks at the eastern side was undertaken at the Outfall basin (Portion E) during monitoring. No other marine works was conducted. No direct disturbance from the site was observed during monitoring. Therefore, the exceedance was considered to be contributed by natural variation and no further action was required.
Actions taken / to be taken	(1) Silt curtain was provided along the Portion E boundary line and extended from seawater level to the bottom of seabed; (2) floating type silt curtain was employed at the inner side; (3) sufficient slack of silt curtain was allowed to cope with the wave and tidal action to ensure the curtains (outer and inner) were rested on seabed; (4) condition of silt curtains was checked by the supervisor daily; and (5) seawall blocks installation was only undertaken within the inner silt curtain area.
Remarks	None

Prepared by: F. C. Tsang

Designation: Environmental Team Leader

Signature:



Date: 02-Jun-11

Photographic record for exceedance of Dissolved Oxygen (Surface) recorded at O-1(ET) on 30-May-11



Site photo



Photo taken at O-1(ET)



Photo taken at O-1-C(ET)

Interim Notification of Environmental Quality Limit Exceedance

Incident Report on Action Level Non-compliance

Project	Tsuen Wan Drainage Tunnel
Date	30-May-11
Time	9:42 AM
Monitoring Location	O-1(ET)
Parameter	Dissolved Oxygen (Mid-depth)
Action & Limit Levels (mg/L)	7.02 / 6.94
Measured Level (mg/L)	6.94
Control Station	O-1-C(ET)
Measured Level at the Control Station (mg/L)	6.98
Possible reason for Action or Limit Level Non-compliance	The measured DO level (marine mid-depth) at the monitoring station was below the baseline action level and slightly below than the DO level of the corresponding control station. Backfilling type II armour behind seawall blocks at the eastern side was undertaken at the Outfall basin (Portion E) during monitoring. No other marine works was conducted. No direct disturbance from the site was observed during monitoring. Therefore, the exceedance was considered to be contributed by natural variation and no further action was required.
Actions taken / to be taken	(1) Silt curtain was provided along the Portion E boundary line and extended from seawater level to the bottom of seabed; (2) floating type silt curtain was employed at the inner side; (3) sufficient slack of silt curtain was allowed to cope with the wave and tidal action to ensure the curtains (outer and inner) were rested on seabed; (4) condition of silt curtains was checked by the supervisor daily; and (5) seawall blocks installation was only undertaken within the inner silt curtain area.
Remarks	None

Prepared by: F. C. Tsang

Designation: Environmental Team Leader

Signature: 

Date: 02-Jun-11

Photographic record for exceedance of Dissolved Oxygen (Mid-depth) recorded at O-1(ET) on 30-May-11



Site photo



Photo taken at O-1(ET)



Photo taken at O-1-C(ET)

Interim Notification of Environmental Quality Limit Exceedance

Incident Report on Limit Level Non-compliance

Project	Tsuen Wan Drainage Tunnel
Date	30-May-11
Time	5:30 PM
Monitoring Location	O-1(FT)
Parameter	Dissolved Oxygen (marine bottom)
Action & Limit Levels (mg/L)	6.99 / 6.96
Measured Level (mg/L)	6.95
Control Station	O-1-C(FT)
Measured Level at the Control Station (mg/L)	6.92
Possible reason for Action or Limit Level Non-compliance	The measured DO level (marine bottom) at the monitoring station was below the baseline limit level but higher than the DO level of the corresponding control station. Backfilling type II armour behind seawall blocks at eastern side was undertaken at the Outfall basin (Portion E) during monitoring. No other marine works was conducted. No direct disturbance from the site was observed during monitoring. Therefore, the exceedance was considered to be contributed by natural variation and no further action was required.
Actions taken / to be taken	(1) Silt curtain was provided along the Portion E boundary line and extended from seawater level to the bottom of seabed; (2) floating type silt curtain was employed at the inner side; (3) sufficient slack of silt curtain was allowed to cope with the wave and tidal action to ensure the curtains (outer and inner) were rested on seabed; (4) condition of silt curtains was checked by the supervisor daily; and (5) seawall blocks installation was undertaken within the inner silt curtain area only.
Remarks	None

Prepared by: F. C. Tsang

Designation: Environmental Team Leader

Signature:



Date: 02-Jun-11

Photographic record for exceedance of Dissolved Oxygen (marine bottom) recorded at O-1(FT) on 30-May-11



Site photo



Site photo

Interim Notification of Environmental Quality Limit Exceedance

Incident Report on Limit Level Non-compliance

Project	Tsuen Wan Drainage Tunnel
Date	27-May-11
Time	3:28 PM
Monitoring Location	O-1(FT)
Parameter	Suspended Solids
Action & Limit Levels (mg/L)	14.10 / 18.08
Measured Level (mg/L)	3.10
Control Station	O-1-C(FT)
Measured Level at the Control Station (mg/L)	2.33
Possible reason for Action or Limit Level Non-compliance	The measured SS level at the monitoring station was well below the baseline action/limit level but slightly higher than 130% of the SS level of the control station. Backfilling grade 700 rockfill and type II armour behind seawall blocks was undertaken at the Outfall basin (Portion E) during monitoring. No other marine works was conducted. No direct disturbance from the site was observed during monitoring. Therefore, the exceedance was considered to be contributed by low SS level of the control station and natural variation. Since the exceedance was non-project related, no further action was required.
Actions taken / to be taken	(1) Silt curtain was provided along the Portion E boundary line and extended from seawater level to the bottom of seabed; (2) floating type silt curtain was employed at the inner side; (3) sufficient slack of silt curtain was allowed to cope with the wave and tidal action to ensure the curtains (outer and inner) were rested on seabed; (4) condition of silt curtains was checked by the supervisor daily; and (5) seawall blocks installation was only undertaken within the inner silt curtain area.
Remarks	None

Prepared by: F. C. Tsang

Designation: Environmental Team Leader

Signature:



Date: 02-Jun-11

Photographic record for exceedance of Suspended Solids recorded at O-1(FT) on 27-May-11



Site photo




Site photo

Interim Notification of Environmental Quality Limit Exceedance

Incident Report on Limit Level Non-compliance

Project	Tsuen Wan Drainage Tunnel
Date	01-Jun-11
Time	11:40 AM
Monitoring Location	O-1(ET)
Parameter	Dissolved Oxygen (marine mid-depth)
Action & Limit Levels (mg/L)	7.02 / 6.94
Measured Level (mg/L)	6.93
Control Station	O-1-C(ET)
Measured Level at the Control Station (mg/L)	7.00
Possible reason for Action or Limit Level Non-compliance	The measured DO level (marine mid-depth) of the monitoring station was slightly below the baseline limit level and the DO level at the corresponding control station. Relocation of C&D material to derrick barge was undertaken during monitoring and there was no other marine works conducted. Since the difference between the control station and impact monitoring was only 1%, the exceedance was considered contributed by natural variation and non-project related. Therefore, no further action was required.
Actions taken / to be taken	(1) Silt curtain was provided along the Portion E boundary line and extended from seawater level to the bottom of seabed; (2) floating type silt curtain was employed at the inner side; (3) sufficient slack of silt curtain was allowed to cope with the wave and tidal action to ensure the curtains (outer and inner) were rested on seabed; (4) condition of silt curtains was checked by the supervisor daily; and (5) seawall blocks installation was undertaken within the inner silt curtain area only.
Remarks	None

Prepared by: F. C. Tsang
 Designation: Environmental Team Leader
 Signature: 
 Date: 02-Jun-11

Photographic record for exceedance of Dissolved Oxygen (marine mid-depth) recorded at O-1(ET) on 01-Jun-11



Site photo



Site photo

Interim Notification of Environmental Quality Limit Exceedance

Incident Report on Action Level Non-compliance

Project	Tsuen Wan Drainage Tunnel
Date	03-Jun-11
Time	1:33 PM
Monitoring Location	O-1(ET)
Parameter	Dissolved Oxygen (marine surface)
Action & Limit Levels (mg/L)	7.02 / 6.94
Measured Level (mg/L)	6.97
Control Station	O-1-C(ET)
Measured Level at the Control Station (mg/L)	7.20
Possible reason for Action or Limit Level Non-compliance	The measured DO level (marine surface) of the monitoring station was slightly below the baseline action level and was lower than the DO level at the corresponding control station. Making good of outer silt curtain and relocation of disposal materials from derrick barge (TB203) to another derrick barge (Kong Lung) was undertaken during monitoring. There was no other marine works conducted. No direct disturbance from the site was observed during monitoring. Therefore, the exceedance was considered to be contributed by natural variation and no further action was required.
Actions taken / to be taken	(1) Silt curtain was provided along the Portion E boundary line and extended from seawater level to the bottom of seabed; (2) floating type silt curtain was employed at the inner side; (3) sufficient slack of silt curtain was allowed to cope with the wave and tidal action to ensure the curtains (outer and inner) were rested on seabed; (4) condition of silt curtains was checked by the supervisor daily; and (5) seawall blocks installation was undertaken within the inner silt curtain area only.
Remarks	None

Prepared by: F. C. Tsang
 Designation: Environmental Team Leader

Signature: 

Date: 07-Jun-11

Photographic record for exceedance of Dissolved Oxygen (marine surface) recorded at O-1(ET) on 03-Jun-11



Site photo



Site photo
(Photo taken at location near the site)

Interim Notification of Environmental Quality Limit Exceedance

Incident Report on Action Level Non-compliance

Project	Tsuen Wan Drainage Tunnel
Date	03-Jun-11
Time	1:33 PM
Monitoring Location	O-1(ET)
Parameter	Dissolved Oxygen (marine mid-depth)
Action & Limit Levels (mg/L)	7.02 / 6.94
Measured Level (mg/L)	6.98
Control Station	O-1-C(ET)
Measured Level at the Control Station (mg/L)	6.92
Possible reason for Action or Limit Level Non-compliance	The measured DO level (marine mid-depth) of the monitoring station was slightly below the baseline action level but higher than the DO level at the corresponding control station. Making good of outer silt curtain and relocation of disposal materials from derrick barge (TB203) to another derrick barge (Kong Lung) was undertaken during monitoring. There was no other marine works conducted. No direct disturbance from the site was observed during monitoring. Therefore, the exceedance was considered to be contributed by natural variation and no further action was required.
Actions taken / to be taken	(1) Silt curtain was provided along the Portion E boundary line and extended from seawater level to the bottom of seabed; (2) floating type silt curtain was employed at the inner side; (3) sufficient slack of silt curtain was allowed to cope with the wave and tidal action to ensure the curtains (outer and inner) were rested on seabed; (4) condition of silt curtains was checked by the supervisor daily; and (5) seawall blocks installation was undertaken within the inner silt curtain area only.
Remarks	None

Prepared by: F. C. Tsang
 Designation: Environmental Team Leader

Signature: 

Date: 07-Jun-11

Photographic record for exceedance of Dissolved Oxygen (marine mid-depth) recorded at O-1(ET) on 03-Jun-11



Site photo



Site photo
(Photo taken at location near the site)

Interim Notification of Environmental Quality Limit Exceedance

Incident Report on Limit Level Non-compliance

Project	Tsuen Wan Drainage Tunnel
Date	07-Jun-11
Time	9:40 AM
Monitoring Location	O-1(FT)
Parameter	Dissolved Oxygen (marine bottom)
Action & Limit Levels (mg/L)	6.99 / 6.96
Measured Level (mg/L)	6.94
Control Station	O-1-C(FT)
Measured Level at the Control Station (mg/L)	7.08
Possible reason for Action or Limit Level Non-compliance	The measured DO level (marine bottom) at the monitoring station was slightly below the baseline limit level and was below the DO level of the corresponding control station (about 2.0%). Only loading seawall blocks onto derrick barge was undertaken at the Outfall basin (Portion E) during monitoring. No other marine works was conducted. No direct disturbance from the site was observed during monitoring. Therefore, the exceedance was considered to be contributed by natural variation and no further action was required.
Actions taken / to be taken	(1) Silt curtain was provided along the Portion E boundary line and extended from seawater level to the bottom of seabed; (2) floating type silt curtain was employed at the inner side; (3) sufficient slack of silt curtain was allowed to cope with the wave and tidal action to ensure the curtains (outer and inner) were rested on seabed; (4) condition of silt curtains was checked by the supervisor daily; and (5) seawall blocks installation was undertaken within the inner silt curtain area only.
Remarks	None

Prepared by: F. C. Tsang

Designation: Environmental Team Leader

Signature:



Date: 13-Jun-11

Photographic record for exceedance of Dissolved Oxygen (marine bottom) recorded at O-1(FT) on 07-Jun-11




Site photo

Interim Notification of Environmental Quality Limit Exceedance

Incident Report on Action Level Non-compliance

Project	Tsuen Wan Drainage Tunnel
Date	07-Jun-11
Time	2:33 PM
Monitoring Location	O-1(ET)
Parameter	Dissolved Oxygen (marine surface)
Action & Limit Levels (mg/L)	7.02 / 6.94
Measured Level (mg/L)	6.98
Control Station	O-1-C(ET)
Measured Level at the Control Station (mg/L)	7.02
Possible reason for Action or Limit Level Non-compliance	The measured DO level (marine surface) of the monitoring station was slightly below the baseline action level and DO level at the corresponding control station. Only loading seawall blocks onto derrick barge was undertaken at the Outfall basin (Portion E) on the monitoring day. No other marine works was conducted. No direct disturbance from the site was observed during monitoring. Therefore, the exceedance was considered to be contributed by natural variation and no further action was required.
Actions taken / to be taken	(1) Silt curtain was provided along the Portion E boundary line and extended from seawater level to the bottom of seabed; (2) floating type silt curtain was employed at the inner side; (3) sufficient slack of silt curtain was allowed to cope with the wave and tidal action to ensure the curtains (outer and inner) were rested on seabed; (4) condition of silt curtains was checked by the supervisor daily; and (5) seawall blocks installation was undertaken within the inner silt curtain area only.
Remarks	None

Prepared by: F. C. Tsang
 Designation: Environmental Team Leader
 Signature: 
 Date: 13-Jun-11

Photographic record for exceedance of Dissolved Oxygen (marine surface) recorded at O-1(ET) on 07-Jun-11



Site photo




Site photo

Interim Notification of Environmental Quality Limit Exceedance

Incident Report on Action Level Non-compliance

Project	Tsuen Wan Drainage Tunnel
Date	07-Jun-11
Time	2:33 PM
Monitoring Location	O-1(ET)
Parameter	Dissolved Oxygen (marine mid-depth)
Action & Limit Levels (mg/L)	7.02 / 6.94
Measured Level (mg/L)	6.94
Control Station	O-1-C(ET)
Measured Level at the Control Station (mg/L)	7.11
Possible reason for Action or Limit Level Non-compliance	The measured DO level (marine mid-depth) of the monitoring station was below the baseline action level and DO level at the corresponding control station. Only loading seawall blocks onto derrick barge was undertaken at the Outfall basin (Portion E) on the monitoring day. No other marine works was conducted. No direct disturbance from the site was observed during monitoring. Therefore, the exceedance was considered to be contributed by natural variation and no further action was required.
Actions taken / to be taken	(1) Silt curtain was provided along the Portion E boundary line and extended from seawater level to the bottom of seabed; (2) floating type silt curtain was employed at the inner side; (3) sufficient slack of silt curtain was allowed to cope with the wave and tidal action to ensure the curtains (outer and inner) were rested on seabed; (4) condition of silt curtains was checked by the supervisor daily; and (5) seawall blocks installation was undertaken within the inner silt curtain area only.
Remarks	None

Prepared by: F. C. Tsang
 Designation: Environmental Team Leader
 Signature: 
 Date: 13-Jun-11

Photographic record for exceedance of Dissolved Oxygen (marine mid-depth) recorded at O-1(ET) on 07-Jun-11



Site photo



Site photo

Interim Notification of Environmental Quality Limit Exceedance

Incident Report on Limit Level Non-compliance

Project	Tsuen Wan Drainage Tunnel
Date	09-Jun-11
Time	4:30 PM
Monitoring Location	O-1(ET)
Parameter	Dissolved Oxygen (marine surface)
Action & Limit Levels (mg/L)	7.02 / 6.94
Measured Level (mg/L)	6.89
Control Station	O-1-C(ET)
Measured Level at the Control Station (mg/L)	7.00
Possible reason for Action or Limit Level Non-compliance	The measured DO level (marine surface) of the monitoring station was slightly below the baseline action level and was lower than DO level at the corresponding control station (about 1.5%). Only relocation of type II armour and making good of silt curtain were undertaken at the Outfall basin (Portion E) during monitoring. No other marine works was conducted. No direct disturbance from the site was observed during monitoring. Therefore, the exceedance was considered to be contributed by natural variation and no further action was required.
Actions taken / to be taken	(1) Silt curtain was provided along the Portion E boundary line and extended from seawater level to the bottom of seabed; (2) floating type silt curtain was employed at the inner side; (3) sufficient slack of silt curtain was allowed to cope with the wave and tidal action to ensure the curtains (outer and inner) were rested on seabed; (4) condition of silt curtains was checked by the supervisor daily; and (5) seawall blocks installation was undertaken within the inner silt curtain area only.
Remarks	None

Prepared by: F. C. Tsang
 Designation: Environmental Team Leader

Signature: 

Date: 13-Jun-11

Photographic record for exceedance of Dissolved Oxygen (marine surface) recorded at O-1(ET) on 09-Jun-11



Site photo



Site photo
(Photo taken at location near the site)

Interim Notification of Environmental Quality Limit Exceedance

Incident Report on Limit Level Non-compliance

Project	Tsuen Wan Drainage Tunnel
Date	11-Jun-11
Time	1:22 PM
Monitoring Location	O-1(FT)
Parameter	Dissolved Oxygen (marine bottom)
Action & Limit Levels (mg/L)	6.99 / 6.96
Measured Level (mg/L)	6.83
Control Station	O-1-C(FT)
Measured Level at the Control Station (mg/L)	6.90
Possible reason for Action or Limit Level Non-compliance	The measured DO level (marine bottom) at the monitoring station was below the baseline limit level and slightly lower than DO level of the corresponding control station (about 1.0%). Only outer silt curtain maintenance and repairing was undertaken at the Outfall basin (Portion E) on the monitoring day. No other marine works was conducted. No direct disturbance from the site was observed during monitoring. Therefore, the exceedance was considered to be contributed by natural variation and no further action was required.
Actions taken / to be taken	(1) Silt curtain was provided along the Portion E boundary line and extended from seawater level to the bottom of seabed; (2) floating type silt curtain was employed at the inner side; (3) sufficient slack of silt curtain was allowed to cope with the wave and tidal action to ensure the curtains (outer and inner) were rested on seabed; (4) condition of silt curtains was checked by the supervisor daily; and (5) seawall blocks installation was undertaken within the inner silt curtain area only.
Remarks	None

Prepared by: F. C. Tsang

Designation: Environmental Team Leader

Signature:



Date: 14-Jun-11

Photographic record for exceedance of Dissolved Oxygen (marine bottom) recorded at O-1(FT) on 11-Jun-11




Site photo
(Photo taken at location
near the site)

Interim Notification of Environmental Quality Limit Exceedance

Incident Report on Limit Level Non-compliance

Project	Tsuen Wan Drainage Tunnel
Date	11-Jun-11
Time	9:33 AM
Monitoring Location	O-1(ET)
Parameter	Dissolved Oxygen (marine surface)
Action & Limit Levels (mg/L)	7.02 / 6.94
Measured Level (mg/L)	6.76
Control Station	O-1-C(ET)
Measured Level at the Control Station (mg/L)	6.82
Possible reason for Action or Limit Level Non-compliance	The measured DO level (marine surface) of the monitoring station was below the baseline limit level and slightly lower than DO level at the corresponding control station (less than 1%). Only outer silt curtain maintenance and repairing was undertaken at the Outfall basin (Portion E) on the monitoring day. No other marine works was conducted. No direct disturbance from the site was observed during monitoring. Therefore, the exceedance was considered to be contributed by natural variation and no further action was required.
Actions taken / to be taken	(1) Silt curtain was provided along the Portion E boundary line and extended from seawater level to the bottom of seabed; (2) floating type silt curtain was employed at the inner side; (3) sufficient slack of silt curtain was allowed to cope with the wave and tidal action to ensure the curtains (outer and inner) were rested on seabed; (4) condition of silt curtains was checked by the supervisor daily; and (5) seawall blocks installation was undertaken within the inner silt curtain area only.
Remarks	None

Prepared by: F. C. Tsang
 Designation: Environmental Team Leader
 Signature: 
 Date: 14-Jun-11

Photographic record for exceedance of Dissolved Oxygen (marine surface) recorded at O-1(ET) on 11-Jun-11



Site photo
(Photo taken at location
near O-1(ET))




Site photo
(Photo taken at location
near O-1-C(ET))

Interim Notification of Environmental Quality Limit Exceedance

Incident Report on Limit Level Non-compliance

Project	Tsuen Wan Drainage Tunnel
Date	11-Jun-11
Time	9:33 AM
Monitoring Location	O-1(ET)
Parameter	Dissolved Oxygen (marine mid-depth)
Action & Limit Levels (mg/L)	7.02 / 6.94
Measured Level (mg/L)	6.89
Control Station	O-1-C(ET)
Measured Level at the Control Station (mg/L)	6.92
Possible reason for Action or Limit Level Non-compliance	The measured DO level (marine mid-depth) of the monitoring station was below the baseline limit level and slightly lower than DO level at the corresponding control station (less than 0.5%). Only outer silt curtain maintenance and repairing was undertaken at the Outfall basin (Portion E) on the monitoring day. No other marine works was conducted. No direct disturbance from the site was observed during monitoring. Therefore, the exceedance was considered to be contributed by natural variation and no further action was required.
Actions taken / to be taken	(1) Silt curtain was provided along the Portion E boundary line and extended from seawater level to the bottom of seabed; (2) floating type silt curtain was employed at the inner side; (3) sufficient slack of silt curtain was allowed to cope with the wave and tidal action to ensure the curtains (outer and inner) were rested on seabed; (4) condition of silt curtains was checked by the supervisor daily; and (5) seawall blocks installation was undertaken within the inner silt curtain area only.
Remarks	None

Prepared by: F. C. Tsang
 Designation: Environmental Team Leader
 Signature: 
 Date: 14-Jun-11

Photographic record for exceedance of Dissolved Oxygen (marine mid-depth) recorded at O-1(ET) on 11-Jun-11



Site photo
(Photo taken at location
near O-1(ET))



Site photo
(Photo taken at location
near O-1-C(ET))

Interim Notification of Environmental Quality Limit Exceedance

Incident Report on Limit Level Non-compliance

Project	Tsuen Wan Drainage Tunnel
Date	13-Jun-11
Time	3:28 PM
Monitoring Location	O-1(FT)
Parameter	Dissolved Oxygen (marine bottom)
Action & Limit Levels (mg/L)	6.99 / 6.96
Measured Level (mg/L)	6.89
Control Station	O-1-C(FT)
Measured Level at the Control Station (mg/L)	6.89
Possible reason for Action or Limit Level Non-compliance	The measured DO level (marine bottom) at the monitoring station was below the baseline limit level but same as DO level of the corresponding control station. Only outer silt curtain maintenance and repairing was undertaken at the Outfall basin (Portion E) on the monitoring day. No other marine works was conducted. No direct disturbance from the site was observed during monitoring. Therefore, the exceedance was considered to be contributed by natural variation and no further action was required.
Actions taken / to be taken	(1) Silt curtain was provided along the Portion E boundary line and extended from seawater level to the bottom of seabed; (2) floating type silt curtain was employed at the inner side; (3) sufficient slack of silt curtain was allowed to cope with the wave and tidal action to ensure the curtains (outer and inner) were rested on seabed; (4) condition of silt curtains was checked by the supervisor daily; and (5) seawall blocks installation was undertaken within the inner silt curtain area only.
Remarks	None

Prepared by: F. C. Tsang

Designation: Environmental Team Leader

Signature:



Date: 14-Jun-11

Photographic record for exceedance of Dissolved Oxygen (marine bottom) recorded at O-1(FT) on 13-Jun-11




Site photo
(Photo taken at location
near the site)

Interim Notifications of Environmental Quality Limits Exceedances

Incident Report on Action Level Non-compliance

Project	Tsuen Wan Drainage Tunnel
Date	9-Jun-11
Time	3:10 PM
Monitoring Location	Sik Sik Yuen Ho Fung College (I-1)
Parameter	Suspended Solid
Action & Limit Levels (mg/L)	8.85 / 10.17
Measured Level (mg/L)	2.50
Control Station	I-1-C
Measured Level at the Control Station (mg/L)	2.00
Possible reason for Action or Limit Level Non-compliance	The measured SS level was lower than the baseline action/limit level, but slightly higher than 120% of SS level of the control station (I-1-C). General site cleaning, removing working platform next to Bay 5, formwork at cascade Bay 7, trimming shotcrete and cutting wiremesh, installation of bracket on spiral ramp for construction of Shing Mun Road platform and geotechnical instrumentation monitoring were undertaken during measurement. No direct disturbance was observed from the site. The exceedance was considered to be contributed by low SS level at the control station. Since the exceedance was non-projected related, no further action was required.
Actions taken / to be taken	The following mitigation measures were provided on-site during monitoring: (1) waste water was collected to waste water treatment plant and treated before discharge; and (2) Nullah and site area were separated by sealed concrete block.
Remarks	None

Prepared by: Fan Cheong Tsang
 Designation: Environmental Team Leader
 Signature: 
 Date: 17-Jun-11

Photographic record for exceedance of Suspended Solid recorded at Sik Sik Yuen Ho Fung College (I-1) on 09-Jun-11



Site photo



Photo taken at I-1



Photo taken at I-1-C

Interim Notification of Environmental Quality Limit Exceedance

Incident Report on Limit Level Non-compliance

Project	Tsuen Wan Drainage Tunnel
Date	15-Jun-11
Time	5:30 PM
Monitoring Location	O-1(FT)
Parameter	Dissolved Oxygen (marine surface)
Action & Limit Levels (mg/L)	6.84 / 6.81
Measured Level (mg/L)	6.70
Control Station	O-1-C(FT)
Measured Level at the Control Station (mg/L)	6.75
Possible reason for Action or Limit Level Non-compliance	The measured DO level (marine surface) at the monitoring station was below the baseline limit level and slightly lower than DO level of the corresponding control station (about 0.7%). Only regular maintenance of outer silt curtain was undertaken at the Outfall basin (Portion E) on the monitoring day. No other marine works was conducted. No direct disturbance from the site was observed during monitoring. Therefore, the exceedance was considered to be contributed by natural variation and no further action was required.
Actions taken / to be taken	(1) Silt curtain was provided along the Portion E boundary line and extended from seawater level to the bottom of seabed; (2) floating type silt curtain was employed at the inner side; (3) sufficient slack of silt curtain was allowed to cope with the wave and tidal action to ensure the curtains (outer and inner) were rested on seabed; (4) condition of silt curtains was checked by the supervisor daily; and (5) seawall blocks installation was undertaken within the inner silt curtain area only.
Remarks	None

Prepared by: F. C. Tsang

Designation: Environmental Team Leader

Signature:



Date: 17-Jun-11

**Photographic record for exceedance of Dissolved Oxygen (marine surface) recorded at O-1(FT)
on 15-Jun-11**



Site photo
(Photo taken at location
near O-1-C(FT))

Interim Notification of Environmental Quality Limit Exceedance

Incident Report on Limit Level Non-compliance

Project	Tsuen Wan Drainage Tunnel
Date	15-Jun-11
Time	5:30 PM
Monitoring Location	O-1(FT)
Parameter	Dissolved Oxygen (marine bottom)
Action & Limit Levels (mg/L)	6.99 / 6.96
Measured Level (mg/L)	6.88
Control Station	O-1-C(FT)
Measured Level at the Control Station (mg/L)	6.91
Possible reason for Action or Limit Level Non-compliance	The measured DO level (marine bottom) at the monitoring station was below the baseline limit level and slightly lower than DO level of the corresponding control station (about 0.4%). Only regular maintenance of outer silt curtain was undertaken at the Outfall basin (Portion E) on the monitoring day. No other marine works was conducted. No direct disturbance from the site was observed during monitoring. Therefore, the exceedance was considered to be contributed by natural variation and no further action was required.
Actions taken / to be taken	(1) Silt curtain was provided along the Portion E boundary line and extended from seawater level to the bottom of seabed; (2) floating type silt curtain was employed at the inner side; (3) sufficient slack of silt curtain was allowed to cope with the wave and tidal action to ensure the curtains (outer and inner) were rested on seabed; (4) condition of silt curtains was checked by the supervisor daily; and (5) seawall blocks installation was undertaken within the inner silt curtain area only.
Remarks	None

Prepared by: F. C. Tsang

Designation: Environmental Team Leader

Signature:



Date: 14-Jun-11

Photographic record for exceedance of Dissolved Oxygen (marine bottom) recorded at O-1(FT) on 15-Jun-11




Site photo
(Photo taken at location
near O-1-C(FT))

Interim Notification of Environmental Quality Limit Exceedance

Incident Report on Limit Level Non-compliance

Project	Tsuen Wan Drainage Tunnel
Date	15-Jun-11
Time	11:22 AM
Monitoring Location	O-1(ET)
Parameter	Dissolved Oxygen (marine surface)
Action & Limit Levels (mg/L)	7.02 / 6.94
Measured Level (mg/L)	6.76
Control Station	O-1-C(ET)
Measured Level at the Control Station (mg/L)	6.83
Possible reason for Action or Limit Level Non-compliance	The measured DO level (marine surface) at the monitoring station was below the baseline limit level and slightly lower than DO level of the corresponding control station (about 1%). Only regular maintenance of outer silt curtain was undertaken at the Outfall basin (Portion E) on the monitoring day. No other marine works was conducted. No direct disturbance from the site was observed during monitoring. Therefore, the exceedance was considered to be contributed by natural variation and no further action was required.
Actions taken / to be taken	(1) Silt curtain was provided along the Portion E boundary line and extended from seawater level to the bottom of seabed; (2) floating type silt curtain was employed at the inner side; (3) sufficient slack of silt curtain was allowed to cope with the wave and tidal action to ensure the curtains (outer and inner) were rested on seabed; (4) condition of silt curtains was checked by the supervisor daily; and (5) seawall blocks installation was undertaken within the inner silt curtain area only.
Remarks	None

Prepared by: F. C. Tsang
 Designation: Environmental Team Leader
 Signature: 
 Date: 17-Jun-11

Photographic record for exceedance of Dissolved Oxygen (marine surface) recorded at O-1(ET) on 15-Jun-11



Site photo
(Photo taken at location
near the site)

Interim Notification of Environmental Quality Limit Exceedance

Incident Report on Limit Level Non-compliance

Project	Tsuen Wan Drainage Tunnel
Date	15-Jun-11
Time	11:22 AM
Monitoring Location	O-1(ET)
Parameter	Dissolved Oxygen (marine mid-depth)
Action & Limit Levels (mg/L)	7.02 / 6.94
Measured Level (mg/L)	6.69
Control Station	O-1-C(ET)
Measured Level at the Control Station (mg/L)	6.77
Possible reason for Action or Limit Level Non-compliance	The measured DO level (marine mid-depth) at the monitoring station was below the baseline limit level and slightly lower than DO level of the corresponding control station (about 1.2%). Only regular maintenance of outer silt curtain was undertaken at the Outfall basin (Portion E) on the monitoring day. No other marine works was conducted. No direct disturbance from the site was observed during monitoring. Therefore, the exceedance was considered to be contributed by natural variation and no further action was required.
Actions taken / to be taken	(1) Silt curtain was provided along the Portion E boundary line and extended from seawater level to the bottom of seabed; (2) floating type silt curtain was employed at the inner side; (3) sufficient slack of silt curtain was allowed to cope with the wave and tidal action to ensure the curtains (outer and inner) were rested on seabed; (4) condition of silt curtains was checked by the supervisor daily; and (5) seawall blocks installation was undertaken within the inner silt curtain area only.
Remarks	None

Prepared by: F. C. Tsang
 Designation: Environmental Team Leader

Signature:



Date: 17-Jun-11

Photographic record for exceedance of Dissolved Oxygen (marine mid-depth) recorded at O-1(ET) on 15-Jun-11




Site photo
(Photo taken at location
near the site)

Interim Notifications of Environmental Quality Limits Exceedances

Incident Report on Limit Level Non-compliance

Project	Tsuen Wan Drainage Tunnel
Date	17-Jun-11
Time	11:50 AM
Monitoring Location	Sik Sik Yuen Ho Fung College (I-1)
Parameter	Turbidity
Action & Limit Levels (NTU)	9.75 / 12.47
Measured Level (NTU)	14.79
Control Station	I-1-C
Measured Level at the Control Station (NTU)	14.86
Possible reason for Action or Limit Level Non-compliance	The measured turbidity level was higher than the baseline limit level, but lower than the turbidity level of the control station (I-1-C). General site cleaning, dismantling formwork at Bay 5 and 6, filling tie bar hole in cascade, temporary traffic arrangement (TTA) at Shing Mun Road and geotechnical instrumentation monitoring were undertaken during measurement. No direct disturbance was observed from the site. The exceedance was considered to be contributed by high turbidity level at upstream location and heavy rainfall. Since the exceedance was non-project related, no further action was required.
Actions taken / to be taken	The following mitigation measures were provided on-site during monitoring: (1) waste water was collected and diverted to waste water treatment plant and treated before discharge; and (2) nullah and site area were separated by sealed concrete block.
Remarks	None

Prepared by: Fan Cheong Tsang
 Designation: Environmental Team Leader
 Signature: 
 Date: 22-Jun-11

Photographic record for exceedance of Turbidity recorded at Sik Sik Yuen Ho Fung College (I-1)
on 17-Jun-11



Site photo



Photo taken at I-1




Photo taken at I-1-C

Interim Notifications of Environmental Quality Limits Exceedances

Incident Report on Limit Level Non-compliance

Project	Tsuen Wan Drainage Tunnel
Date	17-Jun-11
Time	11:09 AM
Monitoring Location	Hong Hoi Chee Hong Temple (I-2)
Parameter	Turbidity
Action & Limit Levels (NTU)	6.63 / 6.99
Measured Level (NTU)	14.31
Control Station	I-2-C
Measured Level at the Control Station (NTU)	14.54
Possible reason for Action or Limit Level Non-compliance	The measured turbidity level was higher than the baseline limit level, but lower than the turbidity level of the control station (I-2-C). General site cleaning, housekeeping and temporary traffic arrangement (TTA), excavation (rock splitting and mucking) at vortex drop shaft, drilling, survey check and rock mapping at man access shaft, excavating the receiving pit at Portion G, and breaking footing of piling platform were undertaken during measurement. No direct disturbance was observed from the site. The exceedance was considered to be contributed by high turbidity level at upstream location and heavy rainfall. Since the exceedance was non-project related, no further action was required.
Actions taken / to be taken	The following mitigation measures were provided on-site during monitoring: (1) wastewater was collected and diverted to waste water treatment plant prior to discharge; (2) existing stream was diverted and bunded by sealed concrete block wall; and (3) existing stream was bunded off by sand bag to prevent any excavated material washing out from working area.
Remarks	None

Prepared by: Fan Cheong Tsang
 Designation: Environmental Team Leader
 Signature: 
 Date: 22-Jun-11

Photographic record for exceedance of Turbidity recorded at Hong Hoi Chee Hong Temple (I-2) on 17-Jun-11



Site photo

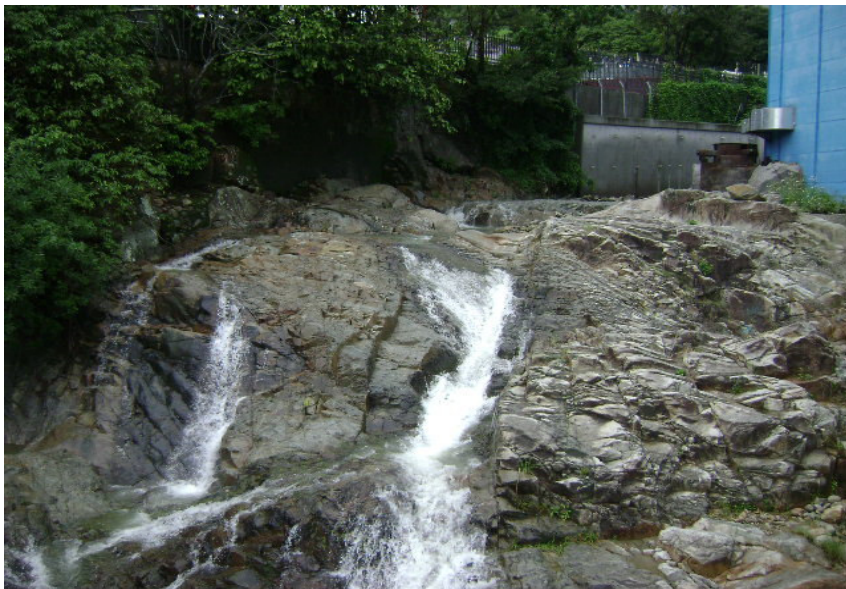


Photo taken at I-2




Photo taken at I-2-C

Interim Notifications of Environmental Quality Limits Exceedances

Incident Report on Limit Level Non-compliance

Project	Tsuen Wan Drainage Tunnel
Date	17-Jun-11
Time	10:12 AM
Monitoring Location	Squatters (I-3)
Parameter	Turbidity
Action & Limit Levels (NTU)	3.99 / 4.18
Measured Level (NTU)	25.75
Control Station	I-3-C
Measured Level at the Control Station (NTU)	26.05
Possible reason for Action or Limit Level Non-compliance	The measured turbidity level was higher than the baseline limit level, but lower than the turbidity level of the control station (I-3-C). General site cleaning and housekeeping, monitoring of de-formation monitoring point (DMP), drilling rock dowel and splitting holes in shaft, and slope cutting and backfilling at PB wall were undertaken during measurement. No direct disturbance was observed from the site. The exceedance was considered to be contributed by high turbidity level at upstream location and heavy rainfall. Since the exceedance was non-project related, no further action was required.
Actions taken / to be taken	The following mitigation measures were provided on-site during monitoring: (1) wastewater was collected and diverted to waste water treatment plant prior to discharge; (2) existing stream was diverted and bunded by sealed concrete block wall; and (3) excavated area was bunded and sealed by concrete block wall to prevent any excavated material runoff from working area.
Remarks	None

Prepared by: Fan Cheong Tsang
 Designation: Environmental Team Leader
 Signature: 
 Date: 22-Jun-11

Photographic record for exceedance of Turbidity recorded at Squatters (I-3) on 17-Jun-11



Photo taken at I-3



Photo taken at I-3-C

Interim Notification of Environmental Quality Limit Exceedance

Incident Report on Limit Level Non-compliance

Project	Tsuen Wan Drainage Tunnel
Date	17-Jun-11
Time	8:55 AM
Monitoring Location	O-1(FT)
Parameter	Dissolved Oxygen (marine surface)
Action & Limit Levels (mg/L)	6.84 / 6.81
Measured Level (mg/L)	6.45
Control Station	O-1-C(FT)
Measured Level at the Control Station (mg/L)	6.48
Possible reason for Action or Limit Level Non-compliance	The measured DO level (marine surface) at the monitoring station was below the baseline limit level and slightly lower than DO level of the corresponding control station (about 0.5%). Only loading the stockpile onto a derrick barge was undertaken at the Outfall basin (Portion E) on the monitoring day. No other marine works was conducted. No direct disturbance from the site was observed during monitoring. Therefore, the exceedance was considered to be contributed by natural variation and no further action was required.
Actions taken / to be taken	(1) Silt curtain was provided along the Portion E boundary line and extended from seawater level to the bottom of seabed; (2) floating type silt curtain was employed at the inner side; (3) sufficient slack of silt curtain was allowed to cope with the wave and tidal action to ensure the curtains (outer and inner) were rested on seabed; (4) condition of silt curtains was checked by the supervisor daily; and (5) seawall blocks installation was undertaken within the inner silt curtain area only.
Remarks	None

Prepared by: F. C. Tsang

Designation: Environmental Team Leader

Signature:



Date: 22-Jun-11

Photographic record for exceedance of Dissolved Oxygen (marine surface) recorded at O-1(FT) on 17-Jun-11



Site photo

Interim Notification of Environmental Quality Limit Exceedance

Incident Report on Limit Level Non-compliance

Project	Tsuen Wan Drainage Tunnel
Date	17-Jun-11
Time	8:55 AM
Monitoring Location	O-1(FT)
Parameter	Dissolved Oxygen (marine mid-depth)
Action & Limit Levels (mg/L)	6.84 / 6.81
Measured Level (mg/L)	6.50
Control Station	O-1-C(FT)
Measured Level at the Control Station (mg/L)	6.53
Possible reason for Action or Limit Level Non-compliance	The measured DO level (marine mid-depth) at the monitoring station was below the baseline limit level and slightly lower than DO level of the corresponding control station (about 0.5%). Only loading the stockpile onto a derrick barge was undertaken at the Outfall basin (Portion E) on the monitoring day. No other marine works was conducted. No direct disturbance from the site was observed during monitoring. Therefore, the exceedance was considered to be contributed by natural variation and no further action was required.
Actions taken / to be taken	(1) Silt curtain was provided along the Portion E boundary line and extended from seawater level to the bottom of seabed; (2) floating type silt curtain was employed at the inner side; (3) sufficient slack of silt curtain was allowed to cope with the wave and tidal action to ensure the curtains (outer and inner) were rested on seabed; (4) condition of silt curtains was checked by the supervisor daily; and (5) seawall blocks installation was undertaken within the inner silt curtain area only.
Remarks	None

Prepared by: F. C. Tsang

Designation: Environmental Team Leader

Signature:



Date: 22-Jun-11

Photographic record for exceedance of Dissolved Oxygen (marine mid-depth) recorded at O-1(FT) on 17-Jun-11



Site photo

Interim Notification of Environmental Quality Limit Exceedance

Incident Report on Limit Level Non-compliance

Project	Tsuen Wan Drainage Tunnel
Date	17-Jun-11
Time	8:55 AM
Monitoring Location	O-1(FT)
Parameter	Dissolved Oxygen (marine bottom)
Action & Limit Levels (mg/L)	6.99 / 6.96
Measured Level (mg/L)	6.60
Control Station	O-1-C(FT)
Measured Level at the Control Station (mg/L)	6.67
Possible reason for Action or Limit Level Non-compliance	The measured DO level (marine bottom) at the monitoring station was below the baseline limit level and slightly lower than DO level of the corresponding control station (about 1%). Only loading the stockpile onto a derrick barge was undertaken at the Outfall basin (Portion E) on the monitoring day. No other marine works was conducted. No direct disturbance from the site was observed during monitoring. Therefore, the exceedance was considered to be contributed by natural variation and no further action was required.
Actions taken / to be taken	(1) Silt curtain was provided along the Portion E boundary line and extended from seawater level to the bottom of seabed; (2) floating type silt curtain was employed at the inner side; (3) sufficient slack of silt curtain was allowed to cope with the wave and tidal action to ensure the curtains (outer and inner) were rested on seabed; (4) condition of silt curtains was checked by the supervisor daily; and (5) seawall blocks installation was undertaken within the inner silt curtain area only.
Remarks	None

Prepared by: F. C. Tsang

Designation: Environmental Team Leader

Signature:



Date: 22-Jun-11

Photographic record for exceedance of Dissolved Oxygen (marine bottom) recorded at O-1(FT) on 17-Jun-11



Site photo

Interim Notification of Environmental Quality Limit Exceedance

Incident Report on Limit Level Non-compliance

Project	Tsuen Wan Drainage Tunnel
Date	17-Jun-11
Time	1:32 PM
Monitoring Location	O-1(ET)
Parameter	Dissolved Oxygen (marine surface)
Action & Limit Levels (mg/L)	7.02 / 6.94
Measured Level (mg/L)	6.73
Control Station	O-1-C(ET)
Measured Level at the Control Station (mg/L)	6.61
Possible reason for Action or Limit Level Non-compliance	The measured DO level (marine surface) at the monitoring station was below the baseline limit level, but higher than DO level of the corresponding control station. Only loading the stockpile onto a derrick barge was undertaken at the Outfall basin (Portion E) on the monitoring day. No other marine works was conducted. No direct disturbance from the site was observed during monitoring. Therefore, the exceedance was considered to be contributed by natural variation and no further action was required.
Actions taken / to be taken	(1) Silt curtain was provided along the Portion E boundary line and extended from seawater level to the bottom of seabed; (2) floating type silt curtain was employed at the inner side; (3) sufficient slack of silt curtain was allowed to cope with the wave and tidal action to ensure the curtains (outer and inner) were rested on seabed; (4) condition of silt curtains was checked by the supervisor daily; and (5) seawall blocks installation was undertaken within the inner silt curtain area only.
Remarks	None

Prepared by: F. C. Tsang

Designation: Environmental Team Leader

Signature:



Date: 22-Jun-11

Photographic record for exceedance of Dissolved Oxygen (marine surface) recorded at O-1(ET) on 17-Jun-11



Site photo

Interim Notification of Environmental Quality Limit Exceedance

Incident Report on Limit Level Non-compliance

Project	Tsuen Wan Drainage Tunnel
Date	17-Jun-11
Time	1:32 PM
Monitoring Location	O-1(ET)
Parameter	Dissolved Oxygen (marine mid-depth)
Action & Limit Levels (mg/L)	7.02 / 6.94
Measured Level (mg/L)	6.62
Control Station	O-1-C(ET)
Measured Level at the Control Station (mg/L)	6.55
Possible reason for Action or Limit Level Non-compliance	The measured DO level (marine mid-depth) at the monitoring station was below the baseline limit level, but higher than DO level of the corresponding control station. Only loading the stockpile onto a derrick barge was undertaken at the Outfall basin (Portion E) on the monitoring day. No other marine works was conducted. No direct disturbance from the site was observed during monitoring. Therefore, the exceedance was considered to be contributed by natural variation and no further action was required.
Actions taken / to be taken	(1) Silt curtain was provided along the Portion E boundary line and extended from seawater level to the bottom of seabed; (2) floating type silt curtain was employed at the inner side; (3) sufficient slack of silt curtain was allowed to cope with the wave and tidal action to ensure the curtains (outer and inner) were rested on seabed; (4) condition of silt curtains was checked by the supervisor daily; and (5) seawall blocks installation was undertaken within the inner silt curtain area only.
Remarks	None

Prepared by: F. C. Tsang

Designation: Environmental Team Leader

Signature:



Date: 22-Jun-11

Photographic record for exceedance of Dissolved Oxygen (marine mid-depth) recorded at O-1(ET) on 17-Jun-11



Site photo

Interim Notification of Environmental Quality Limit Exceedance

Incident Report on Action Level Non-compliance

Project	Tsuen Wan Drainage Tunnel
Date	17-Jun-11
Time	1:32 PM
Monitoring Location	O-1(ET)
Parameter	Dissolved Oxygen (marine bottom)
Action & Limit Levels (mg/L)	6.70 / 6.48
Measured Level (mg/L)	6.66
Control Station	O-1-C(ET)
Measured Level at the Control Station (mg/L)	6.69
Possible reason for Action or Limit Level Non-compliance	The measured DO level (marine bottom) at the monitoring station was below the baseline action level and slightly lower than DO level of the corresponding control station (about 0.5%). Only loading the stockpile onto a derrick barge was undertaken at the Outfall basin (Portion E) on the monitoring day. No other marine works was conducted. No direct disturbance from the site was observed during monitoring. Therefore, the exceedance was considered to be contributed by natural variation and no further action was required.
Actions taken / to be taken	(1) Silt curtain was provided along the Portion E boundary line and extended from seawater level to the bottom of seabed; (2) floating type silt curtain was employed at the inner side; (3) sufficient slack of silt curtain was allowed to cope with the wave and tidal action to ensure the curtains (outer and inner) were rested on seabed; (4) condition of silt curtains was checked by the supervisor daily; and (5) seawall blocks installation was undertaken within the inner silt curtain area only.
Remarks	None

Prepared by: F. C. Tsang

Designation: Environmental Team Leader

Signature:



Date: 22-Jun-11

Photographic record for exceedance of Dissolved Oxygen (marine bottom) recorded at O-1(ET) on 17-Jun-11



Site photo

Interim Notification of Environmental Quality Limit Exceedance

Incident Report on Limit Level Non-compliance

Project	Tsuen Wan Drainage Tunnel
Date	20-Jun-11
Time	10:40 AM
Monitoring Location	O-1(FT)
Parameter	Dissolved Oxygen (marine surface)
Action & Limit Levels (mg/L)	6.84 / 6.81
Measured Level (mg/L)	6.70
Control Station	O-1-C(FT)
Measured Level at the Control Station (mg/L)	6.86
Possible reason for Action or Limit Level Non-compliance	The measured DO level (marine surface) at the monitoring station was below the baseline limit level and lower than DO level of the corresponding control station (about 2.4%). Only re-position of the inner silt curtain and carrying out fifth shipment of disposal to TM38 were undertaken at the Outfall basin (Portion E) on the monitoring day. No other marine works was conducted. No direct disturbance from the site was observed during monitoring. Therefore, the exceedance was considered to be contributed by natural variation and no further action was required.
Actions taken / to be taken	(1) Silt curtain was provided along the Portion E boundary line and extended from seawater level to the bottom of seabed; (2) floating type silt curtain was employed at the inner side; (3) sufficient slack of silt curtain was allowed to cope with the wave and tidal action to ensure the curtains (outer and inner) were rested on seabed; (4) condition of silt curtains was checked by the supervisor daily; and (5) seawall blocks installation was undertaken within the inner silt curtain area only.
Remarks	None

Prepared by: F. C. Tsang

Designation: Environmental Team Leader

Signature:



Date: 23-Jun-11

Photographic record for exceedance of Dissolved Oxygen (marine surface) recorded at O-1(FT) on 20-Jun-11



Site photo

Interim Notification of Environmental Quality Limit Exceedance

Incident Report on Action Level Non-compliance

Project	Tsuen Wan Drainage Tunnel
Date	20-Jun-11
Time	10:40 AM
Monitoring Location	O-1(FT)
Parameter	Dissolved Oxygen (marine mid-depth)
Action & Limit Levels (mg/L)	6.84 / 6.81
Measured Level (mg/L)	6.81
Control Station	O-1-C(FT)
Measured Level at the Control Station (mg/L)	6.96
Possible reason for Action or Limit Level Non-compliance	The measured DO level (marine mid-depth) at the monitoring station was below the baseline action level and lower than DO level of the corresponding control station (about 2.2%). Only re-position of the inner silt curtain and carrying out fifth shipment of disposal to TM38 were undertaken at the Outfall basin (Portion E) on the monitoring day. No other marine works was conducted. No direct disturbance from the site was observed during monitoring. Therefore, the exceedance was considered to be contributed by natural variation and no further action was required.
Actions taken / to be taken	(1) Silt curtain was provided along the Portion E boundary line and extended from seawater level to the bottom of seabed; (2) floating type silt curtain was employed at the inner side; (3) sufficient slack of silt curtain was allowed to cope with the wave and tidal action to ensure the curtains (outer and inner) were rested on seabed; (4) condition of silt curtains was checked by the supervisor daily; and (5) seawall blocks installation was undertaken within the inner silt curtain area only.
Remarks	None

Prepared by: F. C. Tsang

Designation: Environmental Team Leader

Signature:



Date: 23-Jun-11

Photographic record for exceedance of Dissolved Oxygen (marine mid-depth) recorded at O-1(FT) on 20-Jun-11



Site photo

Interim Notification of Environmental Quality Limit Exceedance

Incident Report on Limit Level Non-compliance

Project	Tsuen Wan Drainage Tunnel
Date	20-Jun-11
Time	10:40 AM
Monitoring Location	O-1(FT)
Parameter	Dissolved Oxygen (marine bottom)
Action & Limit Levels (mg/L)	6.99 / 6.96
Measured Level (mg/L)	6.95
Control Station	O-1-C(FT)
Measured Level at the Control Station (mg/L)	6.79
Possible reason for Action or Limit Level Non-compliance	The measured DO level (marine bottom) at the monitoring station was below the baseline limit level, but higher than the DO level of the corresponding control station. Only re-position of the inner silt curtain and carrying out fifth shipment of disposal to TM38 were undertaken at the Outfall basin (Portion E) on the monitoring day. No other marine works was conducted. No direct disturbance from the site was observed during monitoring. Therefore, the exceedance was considered to be contributed by natural variation and no further action was required.
Actions taken / to be taken	(1) Silt curtain was provided along the Portion E boundary line and extended from seawater level to the bottom of seabed; (2) floating type silt curtain was employed at the inner side; (3) sufficient slack of silt curtain was allowed to cope with the wave and tidal action to ensure the curtains (outer and inner) were rested on seabed; (4) condition of silt curtains was checked by the supervisor daily; and (5) seawall blocks installation was undertaken within the inner silt curtain area only.
Remarks	None

Prepared by: F. C. Tsang

Designation: Environmental Team Leader

Signature:



Date: 23-Jun-11

Photographic record for exceedance of Dissolved Oxygen (marine bottom) recorded at O-1(FT) on 20-Jun-11



Site photo

Interim Notification of Environmental Quality Limit Exceedance

Incident Report on Limit Level Non-compliance

Project	Tsuen Wan Drainage Tunnel
Date	20-Jun-11
Time	2:50 PM
Monitoring Location	O-1(ET)
Parameter	Dissolved Oxygen (marine surface)
Action & Limit Levels (mg/L)	7.02 / 6.94
Measured Level (mg/L)	6.80
Control Station	O-1-C(ET)
Measured Level at the Control Station (mg/L)	6.86
Possible reason for Action or Limit Level Non-compliance	The measured DO level (marine surface) at the monitoring station was below the baseline limit level and slightly lower than the DO level of the corresponding control station (about 0.9%). Only re-position of the inner silt curtain and carrying out fifth shipment of disposal to TM38 were undertaken at the Outfall basin (Portion E) on the monitoring day. No other marine works was conducted. No direct disturbance from the site was observed during monitoring. Therefore, the exceedance was considered to be contributed by natural variation and no further action was required.
Actions taken / to be taken	(1) Silt curtain was provided along the Portion E boundary line and extended from seawater level to the bottom of seabed; (2) floating type silt curtain was employed at the inner side; (3) sufficient slack of silt curtain was allowed to cope with the wave and tidal action to ensure the curtains (outer and inner) were rested on seabed; (4) condition of silt curtains was checked by the supervisor daily; and (5) seawall blocks installation was undertaken within the inner silt curtain area only.
Remarks	None

Prepared by: F. C. Tsang

Designation: Environmental Team Leader

Signature:



Date: 23-Jun-11

Photographic record for exceedance of Dissolved Oxygen (marine surface) recorded at O-1(ET) on 20-Jun-11



Site photo



Site photo

Interim Notification of Environmental Quality Limit Exceedance

Incident Report on Action Level Non-compliance

Project	Tsuen Wan Drainage Tunnel
Date	20-Jun-11
Time	2:50 PM
Monitoring Location	O-1(ET)
Parameter	Dissolved Oxygen (marine mid-depth)
Action & Limit Levels (mg/L)	7.02 / 6.94
Measured Level (mg/L)	6.99
Control Station	O-1-C(ET)
Measured Level at the Control Station (mg/L)	6.91
Possible reason for Action or Limit Level Non-compliance	The measured DO level (marine mid-depth) at the monitoring station was below the baseline action level, but higher than the DO level of the corresponding control station. Only re-position of the inner silt curtain and carrying out fifth shipment of disposal to TM38 were undertaken at the Outfall basin (Portion E) on the monitoring day. No other marine works was conducted. No direct disturbance from the site was observed during monitoring. Therefore, the exceedance was considered to be contributed by natural variation and no further action was required.
Actions taken / to be taken	(1) Silt curtain was provided along the Portion E boundary line and extended from seawater level to the bottom of seabed; (2) floating type silt curtain was employed at the inner side; (3) sufficient slack of silt curtain was allowed to cope with the wave and tidal action to ensure the curtains (outer and inner) were rested on seabed; (4) condition of silt curtains was checked by the supervisor daily; and (5) seawall blocks installation was undertaken within the inner silt curtain area only.
Remarks	None

Prepared by: F. C. Tsang

Designation: Environmental Team Leader

Signature:



Date: 23-Jun-11

Photographic record for exceedance of Dissolved Oxygen (marine mid-depth) recorded at O-1(ET) on 20-Jun-11



Site photo




Site photo

Interim Notification of Environmental Quality Limit Exceedance

Incident Report on Limit Level Non-compliance

Project	Tsuen Wan Drainage Tunnel
Date	11-Jun-11
Time	9:33 AM
Monitoring Location	O-1(ET)
Parameter	Suspended Solids
Action & Limit Levels (mg/L)	13.25 / 14.39
Measured Level (mg/L)	3.60
Control Station	O-1-C(ET)
Measured Level at the Control Station (mg/L)	2.48
Possible reason for Action or Limit Level Non-compliance	The measured SS level of the monitoring station was below the baseline action/limit level, but slightly higher than 130% of SS level of the corresponding control station. Only outer silt curtain maintenance and repairing was undertaken at the Outfall basin (Portion E) on the monitoring day. No other marine works was conducted. No direct disturbance from the site was observed during monitoring. Therefore, the exceedance was considered to be contributed by natural variation and no further action was required.
Actions taken / to be taken	(1) Silt curtain was provided along the Portion E boundary line and extended from seawater level to the bottom of seabed; (2) floating type silt curtain was employed at the inner side; (3) sufficient slack of silt curtain was allowed to cope with the wave and tidal action to ensure the curtains (outer and inner) were rested on seabed; (4) condition of silt curtains was checked by the supervisor daily; and (5) seawall blocks installation was undertaken within the inner silt curtain area only.
Remarks	None

Prepared by: F. C. Tsang
 Designation: Environmental Team Leader
 Signature: 
 Date: 23-Jun-11

Photographic record for exceedance of Suspended Solids recorded at O-1(ET) on 11-Jun-11



Site photo
(Photo taken at location
near O-1(ET))




Site photo
(Photo taken at location
near O-1-C(ET))

Interim Notifications of Environmental Quality Limits Exceedances

Incident Report on Action Level Non-compliance

Project	Tsuen Wan Drainage Tunnel
Date	22-Jun-11
Time	10:30 AM
Monitoring Location	Sik Sik Yuen Ho Fung College (I-1)
Parameter	Turbidity
Action & Limit Levels (NTU)	9.75 / 12.47
Measured Level (NTU)	10.57
Control Station	I-1-C
Measured Level at the Control Station (NTU)	10.56
Possible reason for Action or Limit Level Non-compliance	The measured turbidity level was higher than the baseline action level and slightly higher than the turbidity level of the control station (I-1-C). General site cleaning, dismantling formwork at Bay 5, 6 and 7, removal of H-pile platform, formwork at cascade bay 8, temporary traffic arrangement (TTA) at Shing Mun Road, and geotechnical instrumentation monitoring were undertaken during measurement. No direct disturbance was observed from the site. The exceedance was considered to be contributed by high turbidity level at upstream location and heavy rainfall. Since the exceedance was non-project related, no further action was required.
Actions taken / to be taken	The following mitigation measures were provided on-site during monitoring: (1) waste water was collected and diverted to waste water treatment plant and treated before discharge; and (2) nullah and site area were separated by sealed concrete block.
Remarks	None

Prepared by: Fan Cheong Tsang
 Designation: Environmental Team Leader
 Signature: 
 Date: 24-Jun-11

Photographic record for exceedance of Turbidity recorded at Sik Sik Yuen Ho Fung College (I-1)
on 22-Jun-11



Site photo



Photo taken at I-1




Photo taken at I-1-C

Interim Notifications of Environmental Quality Limits Exceedances

Incident Report on Limit Level Non-compliance

Project	Tsuen Wan Drainage Tunnel
Date	22-Jun-11
Time	9:55 AM
Monitoring Location	Hong Hoi Chee Hong Temple (I-2)
Parameter	Turbidity
Action & Limit Levels (NTU)	6.63 / 6.99
Measured Level (NTU)	15.19
Control Station	I-2-C
Measured Level at the Control Station (NTU)	15.49
Possible reason for Action or Limit Level Non-compliance	The measured turbidity level was higher than the baseline limit level, but lower than the turbidity level of the control station (I-2-C). General site cleaning, housekeeping and temporary traffic arrangement (TTA), excavation (drilling holes and rock splitting) at vortex drop shaft, drilling holes at man access shaft, rock breaking for receiving pit at Portion G slope, and breaking footing of piling platform and excavation for skin wall were undertaken during measurement. No direct disturbance was observed from the site. The exceedance was considered to be contributed by high turbidity level at upstream location and heavy rainfall. Since the exceedance was non-project related, no further action was required.
Actions taken / to be taken	The following mitigation measures were provided on-site during monitoring: (1) wastewater was collected and diverted to waste water treatment plant prior to discharge; (2) existing stream was diverted and banded by sealed concrete block wall; and (3) existing stream was banded off by sand bag to prevent any excavated material washing out from working area.
Remarks	None

Prepared by: Fan Cheong Tsang
 Designation: Environmental Team Leader
 Signature: 
 Date: 24-Jun-11

Photographic record for exceedance of Turbidity recorded at Hong Hoi Chee Hong Temple (I-2) on 22-Jun-11



Site photo



Photo taken at I-2

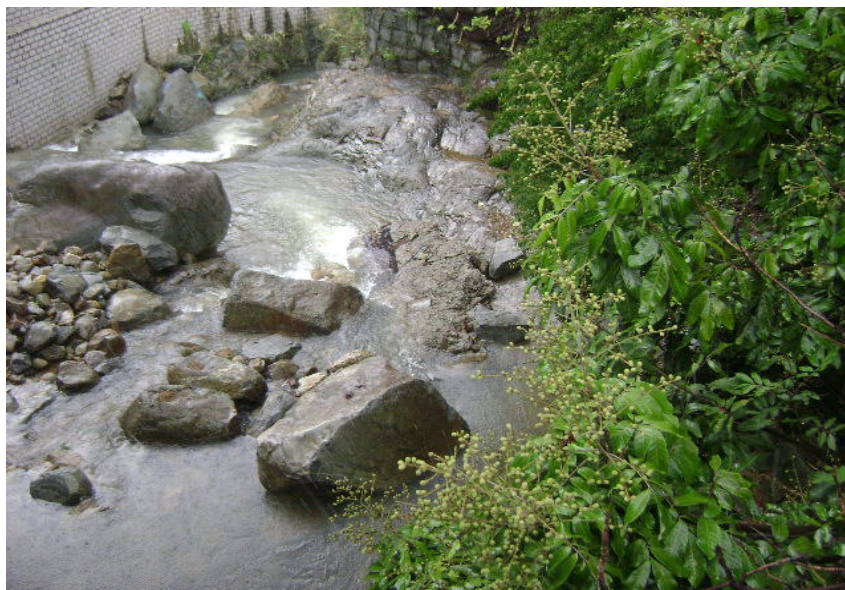



Photo taken at I-2-C

Interim Notifications of Environmental Quality Limits Exceedances

Incident Report on Limit Level Non-compliance

Project	Tsuen Wan Drainage Tunnel
Date	22-Jun-11
Time	9:20 AM
Monitoring Location	Squatters (I-3)
Parameter	Turbidity
Action & Limit Levels (NTU)	3.99 / 4.18
Measured Level (NTU)	9.08
Control Station	I-3-C
Measured Level at the Control Station (NTU)	9.20
Possible reason for Action or Limit Level Non-compliance	The measured turbidity level was higher than the baseline limit level, but lower than the turbidity level of the control station (I-3-C). General site cleaning and housekeeping, monitoring of deformation monitoring point (DMP), drilling splitting holes and rock breaking in shaft, curing of planter wall and backfilling, and slope reinstatement and backfilling at PB wall were undertaken during measurement. No direct disturbance was observed from the site. The exceedance was considered to be contributed by high turbidity level at upstream location and heavy rainfall. Since the exceedance was non-project related, no further action was required.
Actions taken / to be taken	The following mitigation measures were provided on-site during monitoring: (1) wastewater was collected and diverted to waste water treatment plant prior to discharge; (2) existing stream was diverted and bunded by sealed concrete block wall; and (3) excavated area was bunded and sealed by concrete block wall to prevent any excavated material runoff from working area.
Remarks	None

Prepared by: Fan Cheong Tsang
 Designation: Environmental Team Leader
 Signature: 
 Date: 24-Jun-11

Photographic record for exceedance of Turbidity recorded at Squatters (I-3) on 22-Jun-11



Photo taken at I-3




Photo taken at I-3-C

Interim Notifications of Environmental Quality Limits Exceedances

Incident Report on Action Level Non-compliance

Project	Tsuen Wan Drainage Tunnel
Date	17-Jun-11
Time	11:50 AM
Monitoring Location	Sik Sik Yuen Ho Fung College (I-1)
Parameter	Suspended Solids (SS)
Action & Limit Levels (mg/L)	8.85 / 10.17
Measured Level (mg/L)	9.65
Control Station	I-1-C
Measured Level at the Control Station (mg/L)	9.00
Possible reason for Action or Limit Level Non-compliance	The measured SS level was higher than the baseline action level but lower than 120% of the SS level of the control station (I-1-C). General site cleaning, dismantling formwork at Bay 5 and 6, filling tie bar hole in cascade, temporary traffic arrangement (TTA) at Shing Mun Road and geotechnical instrumentation monitoring were undertaken during measurement. No direct disturbance was observed from the site. The exceedance was considered to be contributed by high SS level at upstream location and heavy rainfall. Since the exceedance was non-project related, no further action was required.
Actions taken / to be taken	The following mitigation measures were provided on-site during monitoring: (1) waste water was collected and diverted to waste water treatment plant and treated before discharge; and (2) nullah and site area were separated by sealed concrete block.
Remarks	None

Prepared by: Fan Cheong Tsang
 Designation: Environmental Team Leader
 Signature: 
 Date: 24-Jun-11

Photographic record for exceedance of Suspended Solids (SS) recorded at Sik Sik Yuen Ho Fung College (I-1) on 17-Jun-11



Site photo



Photo taken at I-1




Photo taken at I-1-C

Interim Notifications of Environmental Quality Limits Exceedances

Incident Report on Limit Level Non-compliance

Project	Tsuen Wan Drainage Tunnel
Date	17-Jun-11
Time	11:09 AM
Monitoring Location	Hong Hoi Chee Hong Temple (I-2)
Parameter	Suspended Solids (SS)
Action & Limit Levels (mg/L)	7.68 / 8.34
Measured Level (mg/L)	8.85
Control Station	I-2-C
Measured Level at the Control Station (mg/L)	8.75
Possible reason for Action or Limit Level Non-compliance	The measured SS level was higher than the baseline limit level, but lower than 120% of the SS level of the control station (I-2-C). General site cleaning, housekeeping and temporary traffic arrangement (TTA), excavation (rock splitting and mucking) at vortex drop shaft, drilling, survey check and rock mapping at man access shaft, excavating the receiving pit at Portion G, and breaking footing of piling platform were undertaken during measurement. No direct disturbance was observed from the site. The exceedance was considered to be contributed by high SS level at upstream location and heavy rainfall. Since the exceedance was non-project related, no further action was required.
Actions taken / to be taken	The following mitigation measures were provided on-site during monitoring: (1) wastewater was collected and diverted to waste water treatment plant prior to discharge; (2) existing stream was diverted and bunded by sealed concrete block wall; and (3) existing stream was bunded off by sand bag to prevent any excavated material washing out from working area.
Remarks	None

Prepared by: Fan Cheong Tsang
 Designation: Environmental Team Leader
 Signature: 
 Date: 24-Jun-11

Photographic record for exceedance of Suspended Solids (SS) recorded at Hong Hoi Chee Hong Temple (I-2) on 17-Jun-11



Site photo

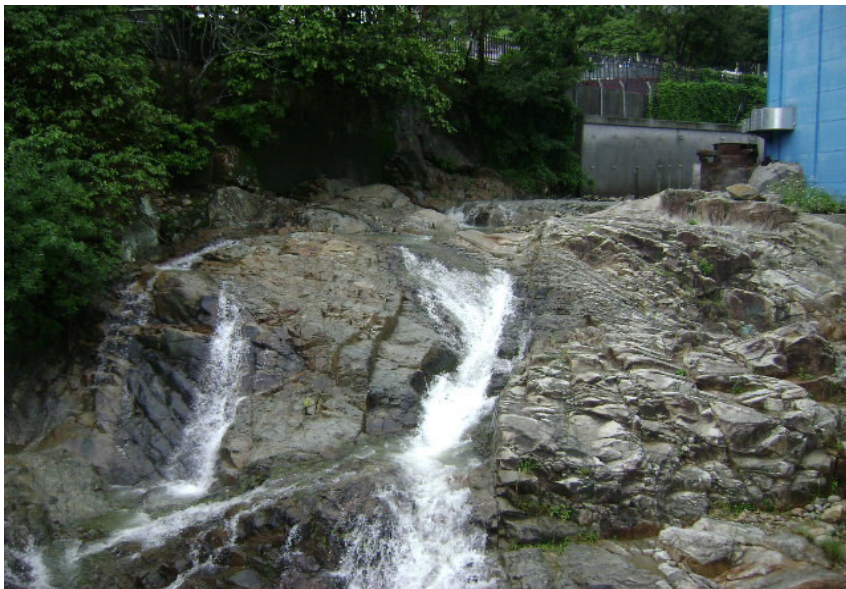


Photo taken at I-2




Photo taken at I-2-C

Interim Notifications of Environmental Quality Limits Exceedances

Incident Report on Limit Level Non-compliance

Project	Tsuen Wan Drainage Tunnel
Date	17-Jun-11
Time	10:12 AM
Monitoring Location	Squatters (I-3)
Parameter	Suspended Solids (SS)
Action & Limit Levels (mg/L)	6.13 / 7.23
Measured Level (mg/L)	18.10
Control Station	I-3-C
Measured Level at the Control Station (mg/L)	17.75
Possible reason for Action or Limit Level Non-compliance	The measured SS level was higher than the baseline limit level, but lower than 120% of the SS level of the control station (I-3-C). General site cleaning and housekeeping, monitoring of de-formation monitoring point (DMP), drilling rock dowel and splitting holes in shaft, and slope cutting and backfilling at PB wall were undertaken during measurement. No direct disturbance was observed from the site. The exceedance was considered to be contributed by high SS level at upstream location and heavy rainfall. Since the exceedance was non-project related, no further action was required.
Actions taken / to be taken	The following mitigation measures were provided on-site during monitoring: (1) wastewater was collected and diverted to waste water treatment plant prior to discharge; (2) existing stream was diverted and bunded by sealed concrete block wall; and (3) excavated area was bunded and sealed by concrete block wall to prevent any excavated material runoff from working area.
Remarks	None

Prepared by: Fan Cheong Tsang
 Designation: Environmental Team Leader
 Signature: 
 Date: 24-Jun-11

Photographic record for exceedance of Suspended Solids (SS) recorded at Squatters (I-3) on 17-Jun-11



Photo taken at I-3



Photo taken at I-3-C

Interim Notification of Environmental Quality Limit Exceedance

Incident Report on Limit Level Non-compliance

Project	Tsuen Wan Drainage Tunnel
Date	24-Jun-11
Time	8:55 AM
Monitoring Location	O-1(ET)
Parameter	Dissolved Oxygen (marine surface)
Action & Limit Levels (mg/L)	7.02 / 6.94
Measured Level (mg/L)	6.92
Control Station	O-1-C(ET)
Measured Level at the Control Station (mg/L)	6.88
Possible reason for Action or Limit Level Non-compliance	The measured DO level (marine surface) at the monitoring station was below the baseline limit level, but higher than the DO level of the corresponding control station. Only re-position of the silt curtain and loading the excavated materials to derrick barge were undertaken at the Outfall basin (Portion E) on the monitoring day. No other marine works was conducted. No direct disturbance from the site was observed during monitoring. Therefore, the exceedance was considered to be contributed by natural variation and no further action was required.
Actions taken / to be taken	(1) Silt curtain was provided along the Portion E boundary line and extended from seawater level to the bottom of seabed; (2) floating type silt curtain was employed at the inner side; (3) sufficient slack of silt curtain was allowed to cope with the wave and tidal action to ensure the curtains (outer and inner) were rested on seabed; (4) condition of silt curtains was checked by the supervisor daily; and (5) seawall blocks installation was undertaken within the inner silt curtain area only.
Remarks	None

Prepared by: F. C. Tsang

Designation: Environmental Team Leader

Signature:



Date: 28-Jun-11

Photographic record for exceedance of Dissolved Oxygen (marine surface) recorded at O-1(ET) on 24-Jun-11




Site photo (Photo taken at location near O-1(ET))

Interim Notifications of Environmental Quality Limits Exceedances

Incident Report on Limit Level Non-compliance

Project	Tsuen Wan Drainage Tunnel
Date	22-Jun-11
Time	9:55 AM
Monitoring Location	Hong Hoi Chee Hong Temple (I-2)
Parameter	Suspended Solids
Action & Limit Levels (mg/L)	7.68 / 8.34
Measured Level (mg/L)	14.05
Control Station	I-2-C
Measured Level at the Control Station (mg/L)	14.00
Possible reason for Action or Limit Level Non-compliance	The measured SS level was higher than the baseline limit level, but nearly the same as the SS level of the control station (I-2-C). General site cleaning, housekeeping and temporary traffic arrangement (TTA), excavation (drilling holes and rock splitting) at vortex drop shaft, drilling holes at man access shaft, rock breaking for receiving pit at Portion G slope, and breaking footing of piling platform and excavation for skin wall were undertaken during measurement. No direct disturbance was observed from the site. The exceedance was considered to be contributed by high SS level at upstream location and heavy rainfall. Since the exceedance was non-project related, no further action was required.
Actions taken / to be taken	The following mitigation measures were provided on-site during monitoring: (1) wastewater was collected and diverted to waste water treatment plant prior to discharge; (2) existing stream was diverted and bunded by sealed concrete block wall; and (3) existing stream was bunded off by sand bag to prevent any excavated material washing out from working area.
Remarks	None

Prepared by: Fan Cheong Tsang
 Designation: Environmental Team Leader
 Signature: 
 Date: 28-Jun-11

Photographic record for exceedance of Suspended Solids recorded at Hong Hoi Chee Hong Temple (I-2) on 22-Jun-11



Site photo



Photo taken at I-2

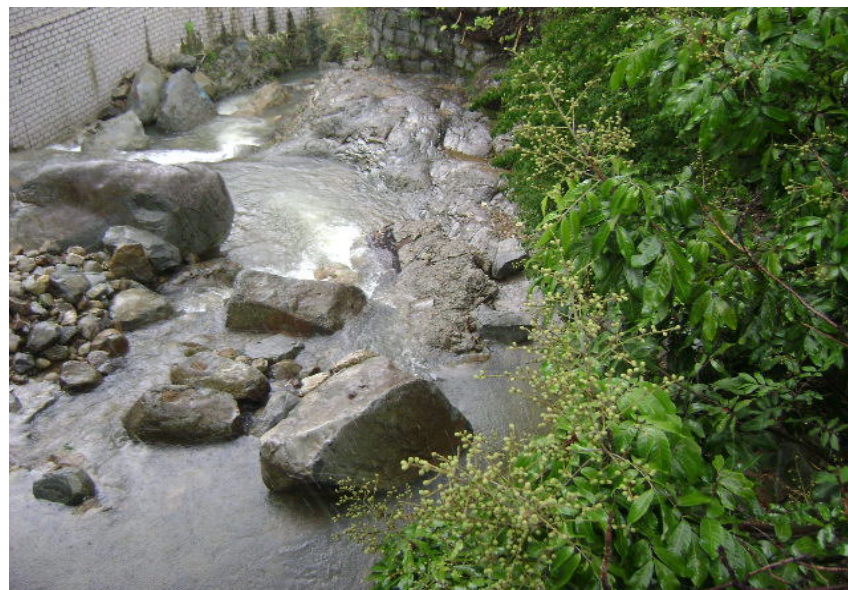


Photo taken at I-2-C

Interim Notification of Environmental Quality Limit Exceedance

Incident Report on Limit Level Non-compliance

Project	Tsuen Wan Drainage Tunnel
Date	27-Jun-11
Time	3:30 PM
Monitoring Location	O-1(FT)
Parameter	Dissolved Oxygen (marine surface)
Action & Limit Levels (mg/L)	6.84 / 6.81
Measured Level (mg/L)	6.74
Control Station	O-1-C(FT)
Measured Level at the Control Station (mg/L)	6.69
Possible reason for Action or Limit Level Non-compliance	The measured DO level (marine surface) at the monitoring station was below the baseline limit level, but higher than the DO level of the corresponding control station. The derrick barge was unloading the excavated material at Tuen Mun Area 38 on the monitoring day and no marine works was conducted at the Outfall basin (Portion E) on the same day. No direct disturbance from the site was observed during monitoring. Therefore, the exceedance was considered to be contributed by natural variation and no further action was required.
Actions taken / to be taken	(1) Silt curtain was provided along the Portion E boundary line and extended from seawater level to the bottom of seabed; (2) floating type silt curtain was employed at the inner side; (3) sufficient slack of silt curtain was allowed to cope with the wave and tidal action to ensure the curtains (outer and inner) were rested on seabed; (4) condition of silt curtains was checked by the supervisor daily; and (5) seawall blocks installation was undertaken within the inner silt curtain area only.
Remarks	None

Prepared by: F. C. Tsang

Designation: Environmental Team Leader

Signature:



Date: 29-Jun-11

Photographic record for exceedance of Dissolved Oxygen (marine surface) recorded at O-1(FT) on 27-Jun-11



Site photo



Site photo



Site photo

Interim Notification of Environmental Quality Limit Exceedance

Incident Report on Limit Level Non-compliance

Project	Tsuen Wan Drainage Tunnel
Date	27-Jun-11
Time	10:40 AM
Monitoring Location	O-1(ET)
Parameter	Dissolved Oxygen (marine surface)
Action & Limit Levels (mg/L)	7.02 / 6.94
Measured Level (mg/L)	6.89
Control Station	O-1-C(ET)
Measured Level at the Control Station (mg/L)	6.82
Possible reason for Action or Limit Level Non-compliance	The measured DO level (marine surface) at the monitoring station was below the baseline limit level, but higher than the DO level of the corresponding control station. The derrick barge was unloading the excavated material at Tuen Mun Area 38 on the monitoring day and no marine works was conducted at the Outfall basin (Portion E) on the same day. No direct disturbance from the site was observed during monitoring. Therefore, the exceedance was considered to be contributed by natural variation and no further action was required.
Actions taken / to be taken	(1) Silt curtain was provided along the Portion E boundary line and extended from seawater level to the bottom of seabed; (2) floating type silt curtain was employed at the inner side; (3) sufficient slack of silt curtain was allowed to cope with the wave and tidal action to ensure the curtains (outer and inner) were rested on seabed; (4) condition of silt curtains was checked by the supervisor daily; and (5) seawall blocks installation was undertaken within the inner silt curtain area only.
Remarks	None

Prepared by: F. C. Tsang

Designation: Environmental Team Leader

Signature:



Date: 29-Jun-11

Photographic record for exceedance of Dissolved Oxygen (marine surface) recorded at O-1(ET) on 27-Jun-11



Site photo



Site photo

Interim Notification of Environmental Quality Limit Exceedance

Incident Report on Limit Level Non-compliance

Project	Tsuen Wan Drainage Tunnel
Date	27-Jun-11
Time	10:40 AM
Monitoring Location	O-1(ET)
Parameter	Dissolved Oxygen (marine mid-depth)
Action & Limit Levels (mg/L)	7.02 / 6.94
Measured Level (mg/L)	6.82
Control Station	O-1-C(ET)
Measured Level at the Control Station (mg/L)	6.97
Possible reason for Action or Limit Level Non-compliance	The measured DO level (marine mid-depth) at the monitoring station was below the baseline limit level and lower than the DO level of the corresponding control station (about 2.2%). The derrick barge was unloading the excavated material at Tuen Mun Area 38 on the monitoring day and no marine works was conducted at the Outfall basin (Portion E) on the same day. No direct disturbance from the site was observed during monitoring. Therefore, the exceedance was considered to be contributed by natural variation and no further action was required.
Actions taken / to be taken	(1) Silt curtain was provided along the Portion E boundary line and extended from seawater level to the bottom of seabed; (2) floating type silt curtain was employed at the inner side; (3) sufficient slack of silt curtain was allowed to cope with the wave and tidal action to ensure the curtains (outer and inner) were rested on seabed; (4) condition of silt curtains was checked by the supervisor daily; and (5) seawall blocks installation was undertaken within the inner silt curtain area only.
Remarks	None

Prepared by: F. C. Tsang

Designation: Environmental Team Leader

Signature:



Date: 29-Jun-11

Photographic record for exceedance of Dissolved Oxygen (marine mid-depth) recorded at O-1(ET) on 27-Jun-11



Site photo



Site photo

Interim Notification of Environmental Quality Limit Exceedance

Incident Report on Limit Level Non-compliance

Project	Tsuen Wan Drainage Tunnel
Date	29-Jun-11
Time	4:55 PM
Monitoring Location	O-1(FT)
Parameter	Dissolved Oxygen (marine surface)
Action & Limit Levels (mg/L)	6.84 / 6.81
Measured Level (mg/L)	6.78
Control Station	O-1-C(FT)
Measured Level at the Control Station (mg/L)	6.58
Possible reason for Action or Limit Level Non-compliance	The measured DO level (marine surface) at the monitoring station was below the baseline limit level, but higher than the DO level of the corresponding control station. Only excavation for seawall blocks formation was undertaken at the Outfall basin (Portion E) on the monitoring day. No other marine works was conducted. No direct disturbance from the site was observed during monitoring. Therefore, the exceedance was considered as non-project related and no further action was required.
Actions taken / to be taken	(1) Silt curtain was provided along the Portion E boundary line and extended from seawater level to the bottom of seabed; (2) floating type silt curtain was employed at the inner side; (3) sufficient slack of silt curtain was allowed to cope with the wave and tidal action to ensure the curtains (outer and inner) were rested on seabed; (4) condition of silt curtains was checked by the supervisor daily; and (5) seawall blocks installation was undertaken within the inner silt curtain area only.
Remarks	None

Prepared by: F. C. Tsang

Designation: Environmental Team Leader

Signature:

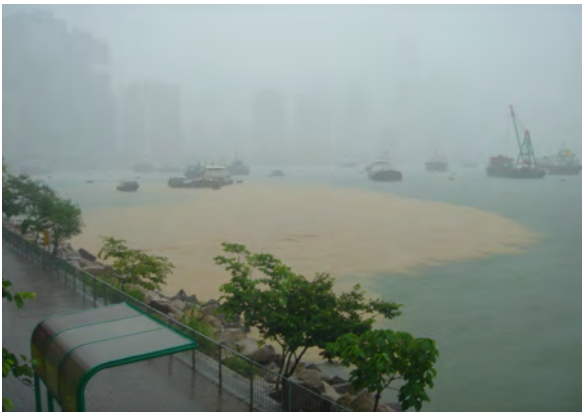


Date: 04-Jul-11

Photographic record for exceedance of Dissolved Oxygen (marine surface) recorded at O-1(FT) on 29-Jun-11



Site photo
(Photo taken at location near Greenview Terrace)



On 29 June 2011, 76.5 mm heavy rainfall was recorded. Huge amount of muddy water discharged from streams and drainage outfalls among the coast into marine water body was observed during afternoon on the monitoring day and caused turbid sea surface.

Photos of drainage outfall near the Belvedere Garden

Interim Notification of Environmental Quality Limit Exceedance

Incident Report on Limit Level Non-compliance

Project	Tsuen Wan Drainage Tunnel
Date	29-Jun-11
Time	4:55 PM
Monitoring Location	O-1(FT)
Parameter	Dissolved Oxygen (marine mid-depth)
Action & Limit Levels (mg/L)	6.84 / 6.81
Measured Level (mg/L)	6.68
Control Station	O-1-C(FT)
Measured Level at the Control Station (mg/L)	6.76
Possible reason for Action or Limit Level Non-compliance	The measured DO level (marine mid-depth) at the monitoring station was below the baseline limit level and slightly lower than the DO level of the corresponding control station (about 1.2%). Only excavation for seawall blocks formation was undertaken at the Outfall basin (Portion E) on the monitoring day. No other marine works was conducted. No direct disturbance from the site was observed during monitoring. Therefore, the exceedance was considered as non-project related and no further action was required.
Actions taken / to be taken	(1) Silt curtain was provided along the Portion E boundary line and extended from seawater level to the bottom of seabed; (2) floating type silt curtain was employed at the inner side; (3) sufficient slack of silt curtain was allowed to cope with the wave and tidal action to ensure the curtains (outer and inner) were rested on seabed; (4) condition of silt curtains was checked by the supervisor daily; and (5) seawall blocks installation was undertaken within the inner silt curtain area only.
Remarks	None

Prepared by: F. C. Tsang

Designation: Environmental Team Leader

Signature:



Date: 04-Jul-11

Photographic record for exceedance of Dissolved Oxygen (marine mid-depth) recorded at O-1(FT) on 29-Jun-11



Site photo
(Photo taken at location
near Greenview Terrace)



On 29 June 2011, 76.5 mm heavy rainfall was recorded. Huge amount of muddy water discharged from streams and drainage outfalls among the coast into marine water body was observed during afternoon on the monitoring day and caused turbid sea surface.

Photos of drainage outfall near the
Belvedere Garden

Interim Notification of Environmental Quality Limit Exceedance

Incident Report on Limit Level Non-compliance

Project	Tsuen Wan Drainage Tunnel
Date	29-Jun-11
Time	4:55 PM
Monitoring Location	O-1(FT)
Parameter	Dissolved Oxygen (marine bottom)
Action & Limit Levels (mg/L)	6.99 / 6.96
Measured Level (mg/L)	6.79
Control Station	O-1-C(FT)
Measured Level at the Control Station (mg/L)	6.80
Possible reason for Action or Limit Level Non-compliance	The measured DO level (marine bottom) at the monitoring station was below the baseline limit level and slightly lower than the DO level of the corresponding control station (0.01mg/L). Only excavation for seawall blocks formation was undertaken at the Outfall basin (Portion E) on the monitoring day. No other marine works was conducted. No direct disturbance from the site was observed during monitoring. Therefore, the exceedance was considered as non-project related and no further action was required.
Actions taken / to be taken	(1) Silt curtain was provided along the Portion E boundary line and extended from seawater level to the bottom of seabed; (2) floating type silt curtain was employed at the inner side; (3) sufficient slack of silt curtain was allowed to cope with the wave and tidal action to ensure the curtains (outer and inner) were rested on seabed; (4) condition of silt curtains was checked by the supervisor daily; and (5) seawall blocks installation was undertaken within the inner silt curtain area only.
Remarks	None

Prepared by: F. C. Tsang

Designation: Environmental Team Leader

Signature:



Date: 04-Jul-11

Photographic record for exceedance of Dissolved Oxygen (marine bottom) recorded at O-1(FT) on 29-Jun-11



Site photo
(Photo taken at location
near Greenview Terrace)



On 29 June 2011, 76.5 mm heavy rainfall was recorded. Huge amount of muddy water discharged from streams and drainage outfalls among the coast into marine water body was observed during afternoon on the monitoring day and caused turbid sea surface.

Photos of drainage outfall near the Belvedere Garden

Interim Notification of Environmental Quality Limit Exceedance

Incident Report on Limit Level Non-compliance

Project	Tsuen Wan Drainage Tunnel
Date	29-Jun-11
Time	10:20 AM
Monitoring Location	O-1(ET)
Parameter	Dissolved Oxygen (marine surface)
Action & Limit Levels (mg/L)	7.02 / 6.94
Measured Level (mg/L)	6.82
Control Station	O-1-C(ET)
Measured Level at the Control Station (mg/L)	6.70
Possible reason for Action or Limit Level Non-compliance	The measured DO level (marine surface) at the monitoring station was below the baseline limit level, but higher than the DO level of the corresponding control station. Only excavation for seawall blocks formation was undertaken at the Outfall basin (Portion E) on the monitoring day. No other marine works was conducted. No direct disturbance from the site was observed during monitoring. Therefore, the exceedance was considered as non-project related and no further action was required.
Actions taken / to be taken	(1) Silt curtain was provided along the Portion E boundary line and extended from seawater level to the bottom of seabed; (2) floating type silt curtain was employed at the inner side; (3) sufficient slack of silt curtain was allowed to cope with the wave and tidal action to ensure the curtains (outer and inner) were rested on seabed; (4) condition of silt curtains was checked by the supervisor daily; and (5) seawall blocks installation was undertaken within the inner silt curtain area only.
Remarks	None

Prepared by: F. C. Tsang

Designation: Environmental Team Leader

Signature:



Date: 04-Jul-11

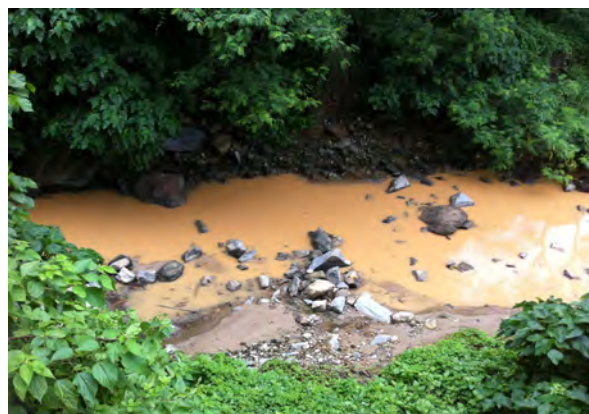
Photographic record for exceedance of Dissolved Oxygen (marine surface) recorded at O-1(ET) on 29-Jun-11



Site photo
(The marine water between the inner and outer silt curtain was clearer than the marine water outside the construction site. No leakage of silt curtain was observed.)



On 29 June 2011, 76.5 mm heavy rainfall was recorded. Huge amount of muddy water discharged from streams and drainage outfalls among the coast into marine water body was observed during monitoring and caused turbid sea surface.



Photos of a stream between The Bay Bridge and Long Beach Garden

Interim Notification of Environmental Quality Limit Exceedance

Incident Report on Limit Level Non-compliance

Project	Tsuen Wan Drainage Tunnel
Date	29-Jun-11
Time	10:20 AM
Monitoring Location	O-1(ET)
Parameter	Dissolved Oxygen (marine mid-depth)
Action & Limit Levels (mg/L)	7.02 / 6.94
Measured Level (mg/L)	6.72
Control Station	O-1-C(ET)
Measured Level at the Control Station (mg/L)	6.81
Possible reason for Action or Limit Level Non-compliance	The measured DO level (marine mid-depth) at the monitoring station was below the baseline limit level and lower than the DO level of the corresponding control station (about 1.3%). Only excavation for seawall blocks formation was undertaken at the Outfall basin (Portion E) on the monitoring day. No other marine works was conducted. No direct disturbance from the site was observed during monitoring. Therefore, the exceedance was considered as non-project related and no further action was required.
Actions taken / to be taken	(1) Silt curtain was provided along the Portion E boundary line and extended from seawater level to the bottom of seabed; (2) floating type silt curtain was employed at the inner side; (3) sufficient slack of silt curtain was allowed to cope with the wave and tidal action to ensure the curtains (outer and inner) were rested on seabed; (4) condition of silt curtains was checked by the supervisor daily; and (5) seawall blocks installation was undertaken within the inner silt curtain area only.
Remarks	None

Prepared by: F. C. Tsang

Designation: Environmental Team Leader

Signature:



Date: 04-Jul-11

Photographic record for exceedance of Dissolved Oxygen (marine mid-depth) recorded at O-1(ET) on 29-Jun-11



Site photo
(The marine water between the inner and outer silt curtain was clearer than the marine water outside the construction site. No leakage of silt curtain was observed.)



On 29 June 2011, 76.5 mm heavy rainfall was recorded. Huge amount of muddy water discharged from streams and drainage outfalls among the coast into marine water body was observed during monitoring and caused turbid sea surface.



Photos of a stream between The Bay Bridge and Long Beach Garden

Interim Notification of Environmental Quality Limit Exceedance

Incident Report on Limit Level Non-compliance

Project	Tsuen Wan Drainage Tunnel
Date	27-Jun-11
Time	10:40 AM
Monitoring Location	O-1(ET)
Parameter	Suspended Solids (SS)
Action & Limit Levels (mg/L)	13.25 / 14.39
Measured Level (mg/L)	9.20
Control Station	O-1-C(ET)
Measured Level at the Control Station (mg/L)	5.97
Possible reason for Action or Limit Level Non-compliance	The measured SS level at the monitoring station was below the baseline action/limit level, but higher than the 130% of SS level of the corresponding control station. The derrick barge was unloading the excavated material at Tuen Mun Area 38 on the monitoring day and no marine works was conducted at the Outfall basin (Portion E) on the same day. No direct disturbance from the site was observed during monitoring. Therefore, the exceedance was considered to be contributed by natural variation and no further action was required.
Actions taken / to be taken	(1) Silt curtain was provided along the Portion E boundary line and extended from seawater level to the bottom of seabed; (2) floating type silt curtain was employed at the inner side; (3) sufficient slack of silt curtain was allowed to cope with the wave and tidal action to ensure the curtains (outer and inner) were rested on seabed; (4) condition of silt curtains was checked by the supervisor daily; and (5) seawall blocks installation was undertaken within the inner silt curtain area only.
Remarks	None

Prepared by: F. C. Tsang

Designation: Environmental Team Leader

Signature:



Date: 06-Jul-11

Photographic record for exceedance of Suspended Solids (SS) recorded at O-1(ET) on 27-Jun-11



Site photo



Site photo