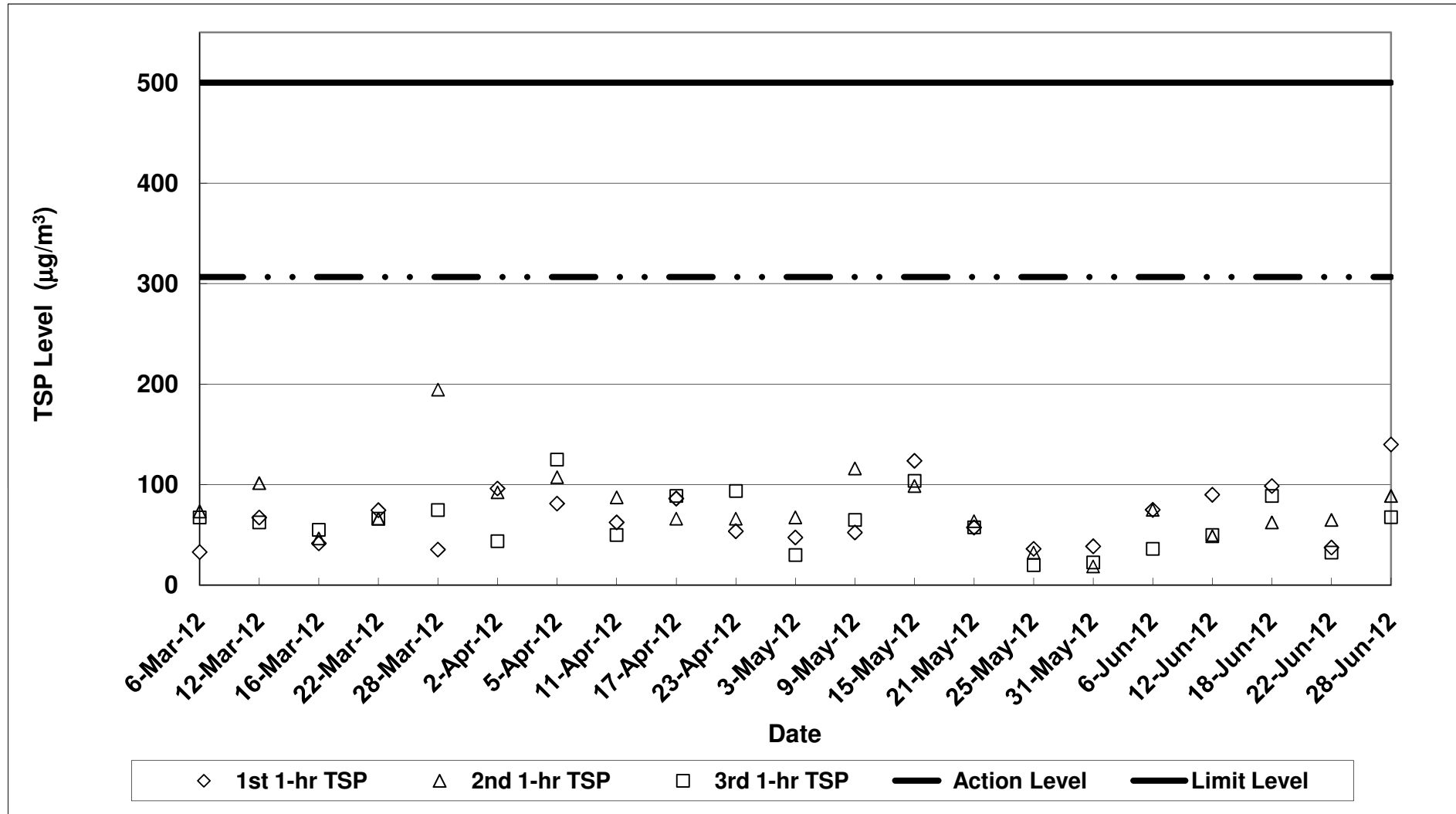


Air Quality Impact Monitoring Results (1-Hour TSP)

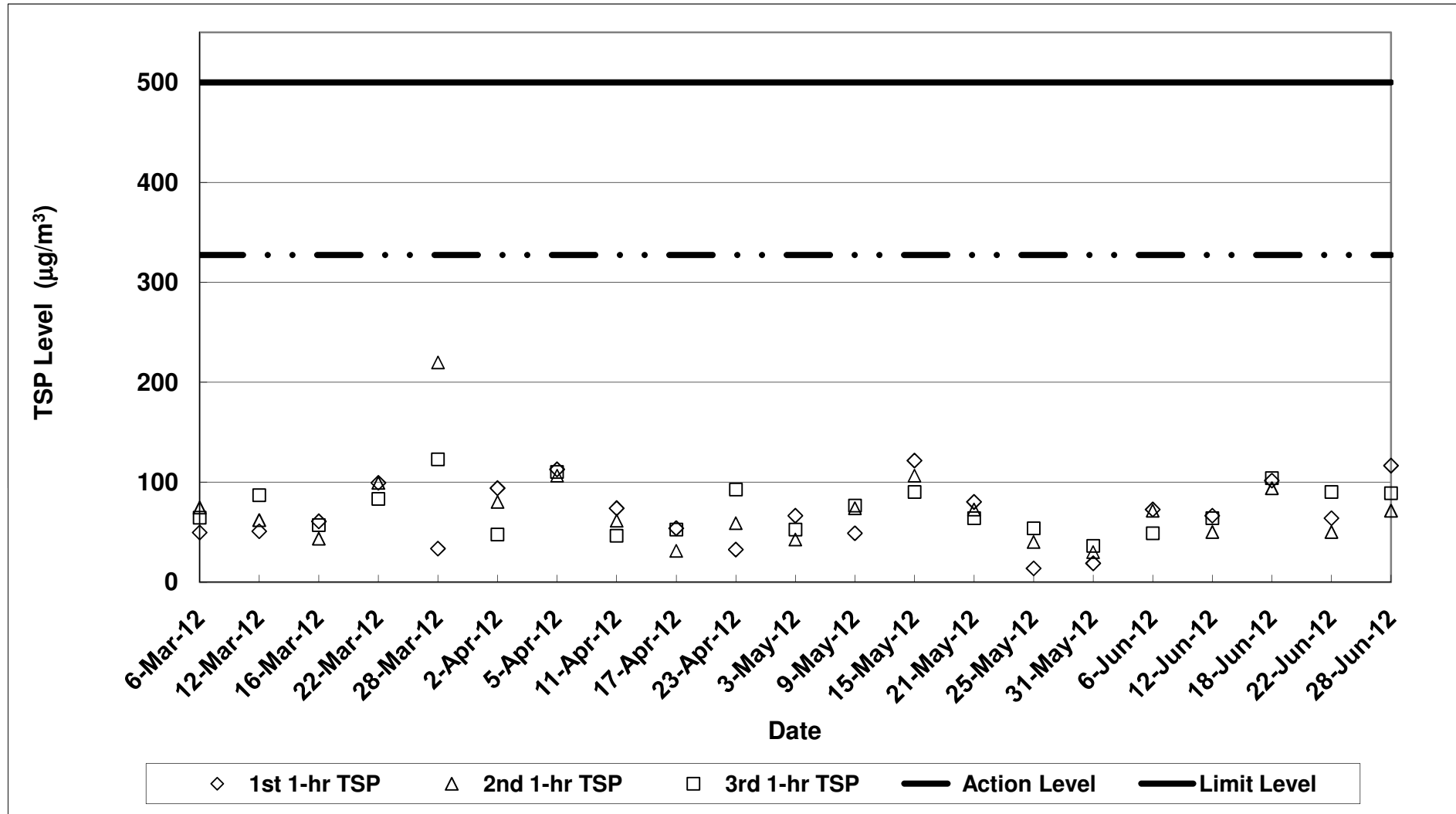
Location	Monitoring Date	Weather Conditions	Wind Speed with Direction (m/s)	Temp (°C)	Timer-I	Timer-F	Time (mins)	Flow-I (CFM)	Flow-F (CFM)	Flow-I (m <sup>3</sup> /min)	Flow-F (m <sup>3</sup> /min)	Flow-avg (m <sup>3</sup> /min)	Volume (m <sup>3</sup> )	Weight-I (g)	Weight-F (g)	Weight-diff. (g)	1-hr TSP (µg/m <sup>3</sup> )	Average 1-Hr TSP (µg/m <sup>3</sup> )	Action/Limit Levels (µg/m <sup>3</sup> )	Observation / Site Condition	Other Possible Dust Sources
Sik Sik Yuen Ho Fung College - Intake (ASR1)	06-Jun-12	Sunny	0.3E	30	634942	635042	60.0	40	40	1.33	1.33	1.33	79.99	2.7713	2.7773	0.0060	75.0	62.1	306.6/500	Nil	Nil
		Sunny	0.3E	30	635042	635142	60.0	40	40	1.33	1.33	1.33	79.99	2.7732	2.7792	0.0060	75.0				
		Sunny	0.3E	30	635142	635242	60.0	40	40	1.33	1.33	1.33	79.99	2.7884	2.7913	0.0029	36.3				
	12-Jun-12	Sunny	0.5W	30	635242	635342	60.0	40	40	1.33	1.33	1.33	79.99	2.7901	2.7973	0.0072	90.0	62.9	306.6/500	Nil	Nil
		Sunny	0.5W	30	635342	635442	60.0	40	40	1.33	1.33	1.33	79.99	2.7801	2.7840	0.0039	48.8				
		Sunny	0.5W	30	635442	635542	60.0	40	40	1.33	1.33	1.33	79.99	2.7300	2.7370	0.0040	50.0				
	18-Jun-12	Rainy	0.4E	28	635542	635642	60.0	40	40	1.33	1.33	1.33	79.99	2.7840	2.7919	0.0079	98.8	83.3	306.6/500	Nil	Nil
		Rainy	0.4E	28	635642	635742	60.0	40	40	1.33	1.33	1.33	79.99	2.7759	2.7809	0.0050	62.5				
		Rainy	0.4E	28	635742	635842	60.0	40	40	1.33	1.33	1.33	79.99	2.7703	2.7774	0.0071	88.8				
	22-Jun-12	Cloudy	0.3E	28	635842	635942	60.0	40	40	1.33	1.33	1.33	79.99	2.8061	2.8091	0.0030	37.5	45.0	306.6/500	Nil	Nil
		Cloudy	0.3E	28	635942	636042	60.0	40	40	1.33	1.33	1.33	79.99	2.7700	2.7752	0.0052	65.0				
		Cloudy	0.3E	28	636042	636142	60.0	40	40	1.33	1.33	1.33	79.99	2.7818	2.7844	0.0026	32.5				
28-Jun-12	Sunny	0.4E	32	636142	636242	60.0	40	40	1.33	1.33	1.33	79.99	2.7990	2.8092	0.0112	140.0	98.8	306.6/500	Steel bending	Vehicles	
	Sunny	0.4E	32	636242	636342	60.0	40	40	1.33	1.33	1.33	79.99	2.8096	2.8167	0.0071	88.8					
	Sunny	0.4E	32	636342	636442	60.0	40	40	1.33	1.33	1.33	79.99	2.8050	2.8104	0.0054	67.5					
Hong Hoi Chee Hong Temple - Intake (ASR3)	06-Jun-12	Sunny	0.3E	30	603490	603590	60.0	40	40	1.33	1.33	1.33	79.75	2.8142	2.8200	0.0058	72.7	64.4	327.4/500	Drilling	Vehicles
		Sunny	0.3E	30	603590	603690	60.0	40	40	1.33	1.33	1.33	79.75	2.8074	2.8131	0.0057	71.5				
		Sunny	0.3E	30	603690	603790	60.0	40	40	1.33	1.33	1.33	79.75	2.8099	2.8138	0.0039	48.9				
	12-Jun-12	Sunny	0.3W	30	603790	603890	60.0	40	40	1.33	1.33	1.33	79.75	2.7827	2.7880	0.0053	66.5	60.2	327.4/500	Drilling	Vehicles
		Sunny	0.3W	30	603890	603990	60.0	40	40	1.33	1.33	1.33	79.75	2.7991	2.7931	0.0040	50.2				
		Sunny	0.3W	30	603990	604090	60.0	40	40	1.33	1.33	1.33	79.75	2.7903	2.7954	0.0051	64.0				
	16-Jun-12	Rainy	0.5E	28	604090	604190	60.0	40	40	1.33	1.33	1.33	79.75	2.8110	2.8191	0.0081	101.6	99.9	327.4/500	Drilling	Vehicles
		Rainy	0.5E	28	604190	604290	60.0	40	40	1.33	1.33	1.33	79.75	2.7915	2.7990	0.0075	94.0				
		Rainy	0.5E	28	604290	604390	60.0	40	40	1.33	1.33	1.33	79.75	2.7933	2.8016	0.0083	104.1				
	22-Jun-12	Cloudy	0.3E	28	604390	604490	60.0	40	40	1.33	1.33	1.33	79.75	2.8027	2.8076	0.0051	64.0	68.1	327.4/500	Concrete work	Vehicles
		Cloudy	0.3E	28	604490	604590	60.0	40	40	1.33	1.33	1.33	79.75	2.7874	2.7914	0.0040	50.2				
		Cloudy	0.3E	28	604590	604690	60.0	40	40	1.33	1.33	1.33	79.75	2.7890	2.7962	0.0072	90.3				
28-Jun-12	Sunny	0.3E	32	604690	604790	60.0	40	40	1.33	1.33	1.33	79.75	2.7875	2.7968	0.0093	116.6	92.4	327.4/500	Drilling	Vehicles	
	Sunny	0.3E	32	604790	604890	60.0	40	40	1.33	1.33	1.33	79.75	2.7853	2.7910	0.0057	71.5					
	Sunny	0.3E	32	604890	604990	60.0	40	40	1.33	1.33	1.33	79.75	2.7918	2.7989	0.0071	89.0					
Long Beach Gardens - Outfall (ASR8)	06-Jun-12	Sunny	0.8E	30	597634	597734	60.0	40	40	1.29	1.29	1.29	77.69	2.8011	2.8038	0.0027	34.8	58.4	336.6/500	Crane operation and rock breaking	Vehicles
		Sunny	0.8E	30	597734	597834	60.0	40	40	1.29	1.29	1.29	77.69	2.7734	2.7793	0.0059	75.9				
		Sunny	0.8E	30	597834	597934	60.0	40	40	1.29	1.29	1.29	77.69	2.7746	2.7796	0.0050	64.4				
	12-Jun-12	Sunny	0.4W	30	597934	598034	60.0	40	40	1.29	1.29	1.29	77.69	2.8120	2.8172	0.0052	66.9	57.9	336.6/500	Crane operation and rock breaking	Vehicles
		Sunny	0.4W	30	598034	598134	60.0	40	40	1.29	1.29	1.29	77.69	2.8003	2.8044	0.0041	52.8				
		Sunny	0.4W	30	598134	598234	60.0	40	40	1.29	1.29	1.29	77.69	2.7958	2.8000	0.0042	54.1				
	18-Jun-12	Rainy	0.8E	28	598234	598334	60.0	40	40	1.29	1.29	1.29	77.69	2.7828	2.7895	0.0067	86.2	94.0	336.6/500	Crane operation and rock breaking	Vehicles
		Rainy	0.8E	28	598334	598434	60.0	40	40	1.29	1.29	1.29	77.69	2.8020	2.8093	0.0073	94.0				
		Rainy	0.8E	28	598434	598534	60.0	40	40	1.29	1.29	1.29	77.69	2.7879	2.7958	0.0079	101.7				
	22-Jun-12	Cloudy	0.7E	28	598534	598634	60.0	40	40	1.29	1.29	1.29	77.69	2.7925	2.7958	0.0033	42.9	58.8	336.6/500	Crane operation and rock breaking	Vehicles
		Cloudy	0.7E	28	598634	598734	60.0	40	40	1.29	1.29	1.29	77.69	2.7962	2.8005	0.0043	55.3				
		Cloudy	0.7E	28	598734	598834	60.0	40	40	1.29	1.29	1.29	77.69	2.7935	2.7991	0.0056	72.1				
28-Jun-12	Sunny	0.5E	32	598834	598934	60.0	40	40	1.29	1.29	1.29	77.69	2.7773	2.7821	0.0048	61.8	61.8	336.6/500	Crane operation and rock breaking	Vehicles	
	Sunny	0.5E	32	598934	599034	60.0	40	40	1.29	1.29	1.29	77.69	2.7820	2.7874	0.0054	69.5					
	Sunny	0.5E	32	599034	599134	60.0	40	40	1.29	1.29	1.29	77.69	2.7703	2.7745	0.0042	54.1					
Greenview Terrace - Outfall (ASR9)	06-Jun-12	Sunny	0.9E	30	590480	590580	60.0	40	40	1.26	1.26	1.26	75.70	2.7749	2.7796	0.0047	62.1	76.6	329.2/500	Crane operation and rock breaking	Vehicles
		Sunny	0.9E	30	590580	590680	60.0	40	40	1.26	1.26	1.26	75.70	2.7776	2.7851	0.0075	99.1				
		Sunny	0.9E	30	590680	590780	60.0	40	40	1.26	1.26	1.26	75.70	2.7930	2.7982	0.0052	68.7				
	12-Jun-12	Sunny	0.7W	30	590780	590880	60.0	40	40	1.26	1.26	1.26	75.70	2.7995	2.8047	0.0052	68.7	68.7	329.2/500	Crane operation and rock breaking	Vehicles
		Sunny	0.7W	30	590880	590980	60.0	40	40	1.26	1.26	1.26	75.70	2.7917	2.7976	0.0059	77.9				
		Sunny	0.7W	30	590980	591080	60.0	40	40	1.26	1.26	1.26	75.70	2.7930	2.7975	0.0045	59.4				
	18-Jun-12	Rainy	0.6E	28	591080	591180	60.0	40	40	1.26	1.26	1.26	75.70	2.7990	2.8082	0.0092	121.5	102.6	329.2/500	Crane operation and rock breaking	Vehicles
		Rainy	0.6E	28	591180	591280	60.0	40	40	1.26	1.26	1.26	75.70	2.8030	2.8102	0.0072	95.1				
		Rainy	0.6E	28	591280	591380	60.0	40	40	1.26	1.26	1.26	75.70	2.8178	2.8247	0.0069	91.2				
	22-Jun-12	Cloudy	0.6E	28	591380	591480	60.0	40	40	1.26	1.26	1.26	75.70	2.8018	2.8093	0.0075	99.1	126.4	329.2/500	Crane operation and rock breaking	Vehicles
		Cloudy	0.6E	28	591480	591580	60.0	40	40	1.26	1.26	1.26	75.70	2.7951	2.8031	0.0080	105.7				
		Cloudy	0.6E	28	591580	591680	60.0	40	40	1.26	1.26	1.26	75.70	2.7934	2.8066	0.0132	174.4				
28-Jun-12	Sunny	0.5E	32	591680	591780	60.0	40	40	1.26	1.26	1.26	75.70	2.7900	2.7959	0.0059	77.9	68.3	329.2/500	Crane operation and rock breaking	Vehicles	
	Sunny	0.5E	32	591780	591880	60.0	40	40	1.26	1.26	1.26	75.70	2.7744	2.7790	0.0046	60.8					
	Sunny	0.5E	32	591880	591980	60.0	40	40	1.26	1.26	1.26	75.70	2.7916	2.7966	0.0050	66.1					

Note:  
 Basic font and yellow shaded indicates an exceedance of Action Level  
 Bold font and red shaded area indicates an exceedance of Limit Level

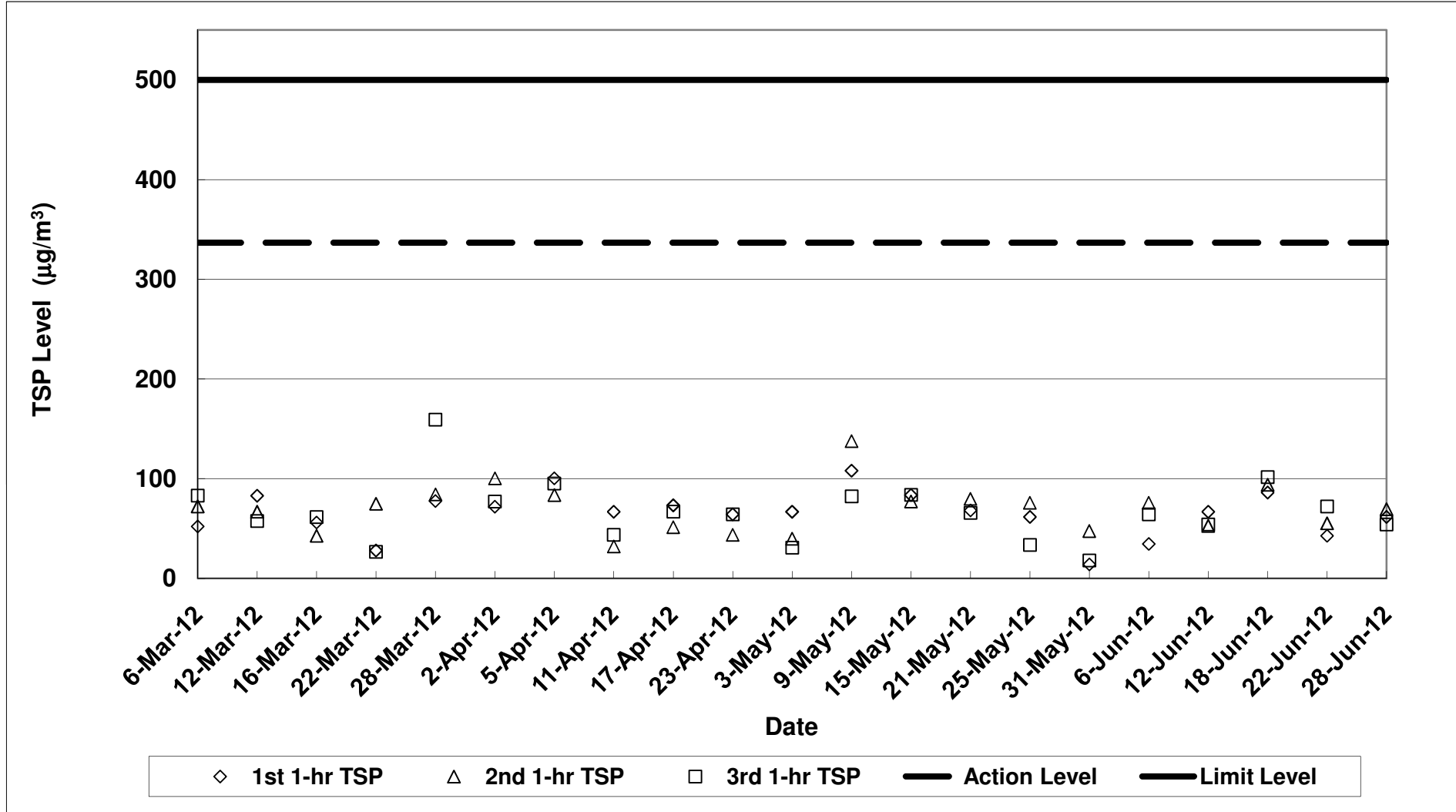
**Contract No. DC/2007/12 - Design and Construction of Tsuen Wan Drainage Tunnel  
 Air Quality Monitoring (1-hr TSP) Results at Sik Sik Yuen Ho Fung College - Intake (ASR1)  
 Mar-12 to Jun-12**



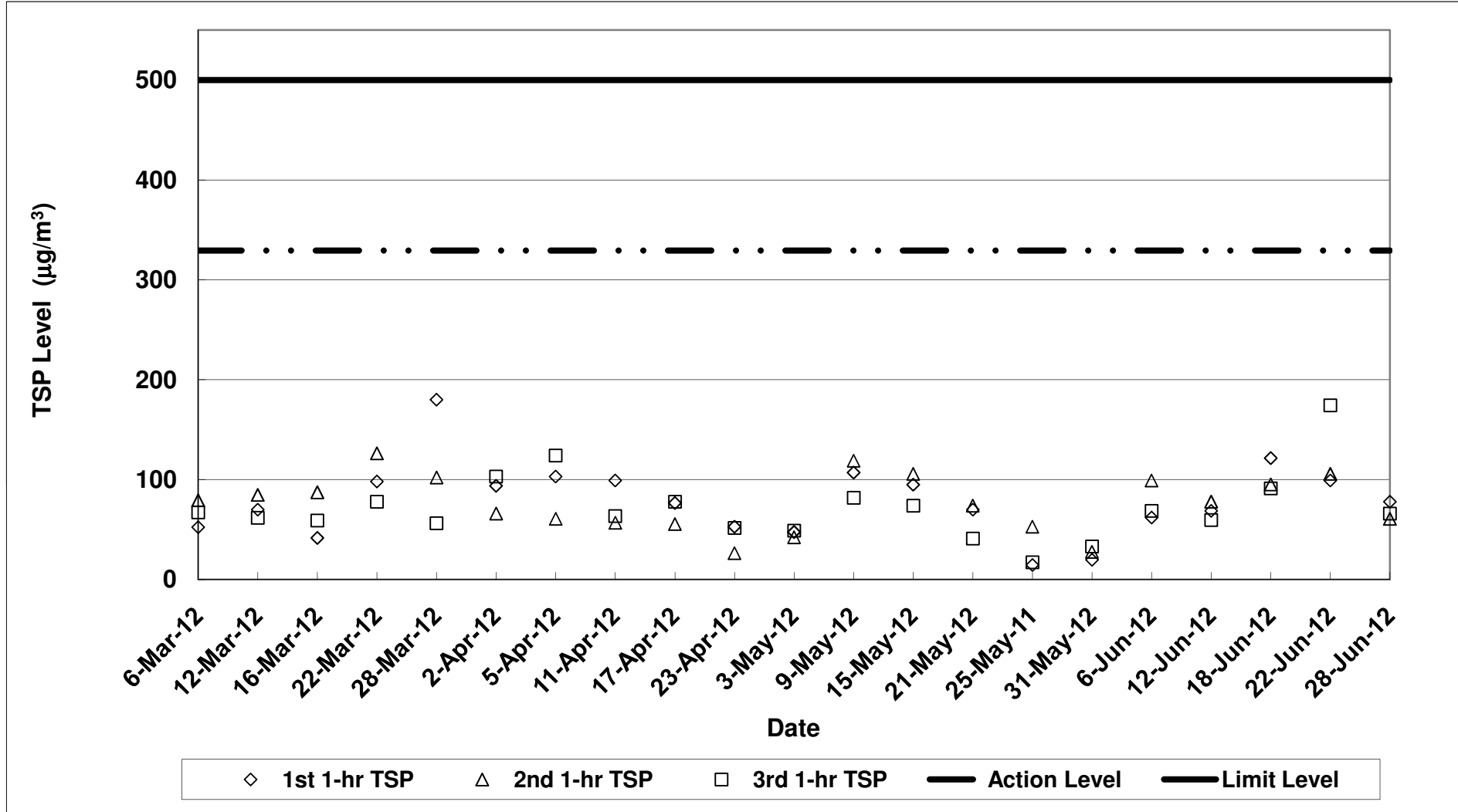
**Contract No. DC/2007/12 - Design and Construction of Tsuen Wan Drainage Tunnel  
 Air Quality Monitoring (1-hr TSP) Results at Hong Hoi Chee Hong Temple - Intake (ASR3)  
 Mar-12 to Jun-12**



**Contract No. DC/2007/12 - Design and Construction of Tsuen Wan Drainage Tunnel  
 Air Quality Monitoring (1-hr TSP) Results at Long Beach Gardens - Outfall (ASR8)  
 Mar-12 to Jun-12**



**Contract No. DC/2007/12 - Design and Construction of Tsuen Wan Drainage Tunnel  
 Air Quality Monitoring (1-hr TSP) Results at Greenview Terrace - Outfall (ASR9)  
 Mar-12 to Jun-12**



Contract No. DC/2007/12 - Design and Construction of Tsuen Wan Drainage Tunnel

Noise Impact Monitoring Results

Monitoring Locations	Date	Weather Conditions	Temperature (°C)	Wind Speed (m/s)	Wind Direction	Start Time	End Time	BL <sup>1</sup> dB(A)	LL <sup>2</sup> dB(A)	L <sub>eq(30min)</sub> dB(A)	L <sub>10(30min)</sub> dB(A)	L <sub>90(30min)</sub> dB(A)	CNL <sup>3</sup> dB(A)	Observation / Site Condition	Other Noise Sources
Sik Sik Yuen Ho Fung College NSR 1	06-Jun-12	Sunny	30	0.3	E	14:54	15:24	65	63.5	65.9	58.1	-	Nil	Traffic noise and insect noise	
	12-Jun-12	Sunny	30	0.5	W	15:07	15:37	65	63.7	66.3	57.5	-	Nil	Traffic noise and insect noise	
	18-Jun-12	Rainy	28	0.4	E	15:50	16:20	65	63.8	66.4	59.3	-	Nil	Traffic noise and insect noise	
	28-Jun-12	Sunny	32	0.4	E	14:52	15:22	70	63.4	65.9	58.4	-	Steel bending	Traffic noise and aircraft noise	
Hong Hoi Chee Hong Temple NSR 3	06-Jun-12	Sunny	30	0.3	E	14:15	14:45	75	68.1	69.3	67.1	-	Drilling	Traffic noise and insect noise	
	12-Jun-12	Sunny	30	0.3	W	14:28	14:58	75	66.7	67.6	66.0	-	Drilling	Traffic noise and insect noise	
	18-Jun-12	Rainy	28	0.5	E	15:08	15:38	75	68.7	70.0	67.4	-	Drilling	Traffic noise and insect noise	
	28-Jun-12	Sunny	32	0.3	E	14:13	14:43	75	61.2	64.0	57.6	-	Drilling	Traffic noise and aircraft noise	
Squatters NSR 6	06-Jun-12	Sunny	30	0.5	E	13:28	13:58	75	66.3	70.1	56.9	-	Crane Operation and Rock Breaking	Aircraft noise	
	12-Jun-12	Sunny	30	0.3	W	13:40	14:10	75	65.6	69.0	59.1	-	Crane Operation and Rock Breaking	Aircraft noise	
	18-Jun-12	Rainy	28	0.4	E	14:20	14:50	75	67.4	70.4	59.9	-	Crane Operation and Rock Breaking	Aircraft noise	
	28-Jun-12	Sunny	32	0.2	E	13:28	13:58	75	66.5	69.4	59.7	-	Crane Operation and Rock Breaking	Aircraft noise	
Long Beach Gardens NSR 8	06-Jun-12	Sunny	30	0.8	E	10:22	10:52	75	66.7	68.6	63.2	-	Crane Operation and Rock Breaking	Traffic noise	
	12-Jun-12	Sunny	30	0.4	W	10:00	10:30	75	63.2	65.6	60.3	-	Crane Operation and Rock Breaking	Traffic noise	
	18-Jun-12	Rainy	28	0.8	E	10:18	10:48	75	65.4	69.6	66.2	-	Crane Operation and Rock Breaking	Traffic noise	
	28-Jun-12	Sunny	32	0.5	E	10:20	10:50	75	66.9	69.2	63.7	-	Crane Operation and Rock Breaking	Traffic noise and aircraft noise	
Greenview Terrace NSR 9	06-Jun-12	Sunny	30	0.9	E	11:03	11:33	75	67.1	71.4	62.7	-	Crane Operation and Rock Breaking	Traffic noise and insect noise	
	12-Jun-12	Sunny	30	0.7	W	10:55	11:25	75	71.0	74.8	66.0	-	Crane Operation and Rock Breaking	Traffic noise and insect noise	
	18-Jun-12	Rainy	28	0.6	E	11:00	11:30	75	72.7	75.2	67.4	-	Crane Operation and Rock Breaking	Traffic noise and insect noise	
	28-Jun-12	Sunny	32	0.5	E	11:00	11:30	75	71.9	74.9	67.3	-	Crane Operation and Rock Breaking	Traffic noise and aircraft noise	

1: Baseline Noise Level

2: Limit Level

3: Corrected Noise Level

Note:

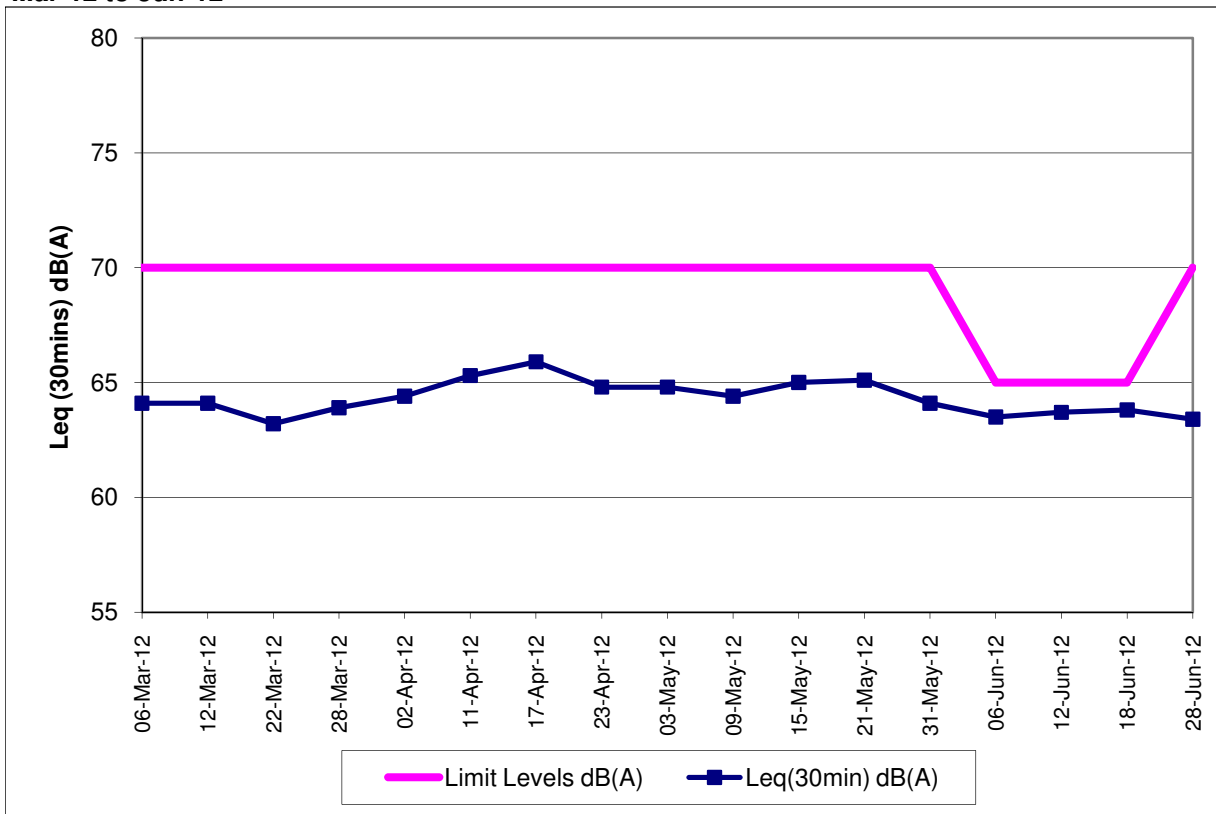
The limit level of NSR1 is 65dB(A) during school examination period.

**Red Bold indicates an exceedance of Limit Level**

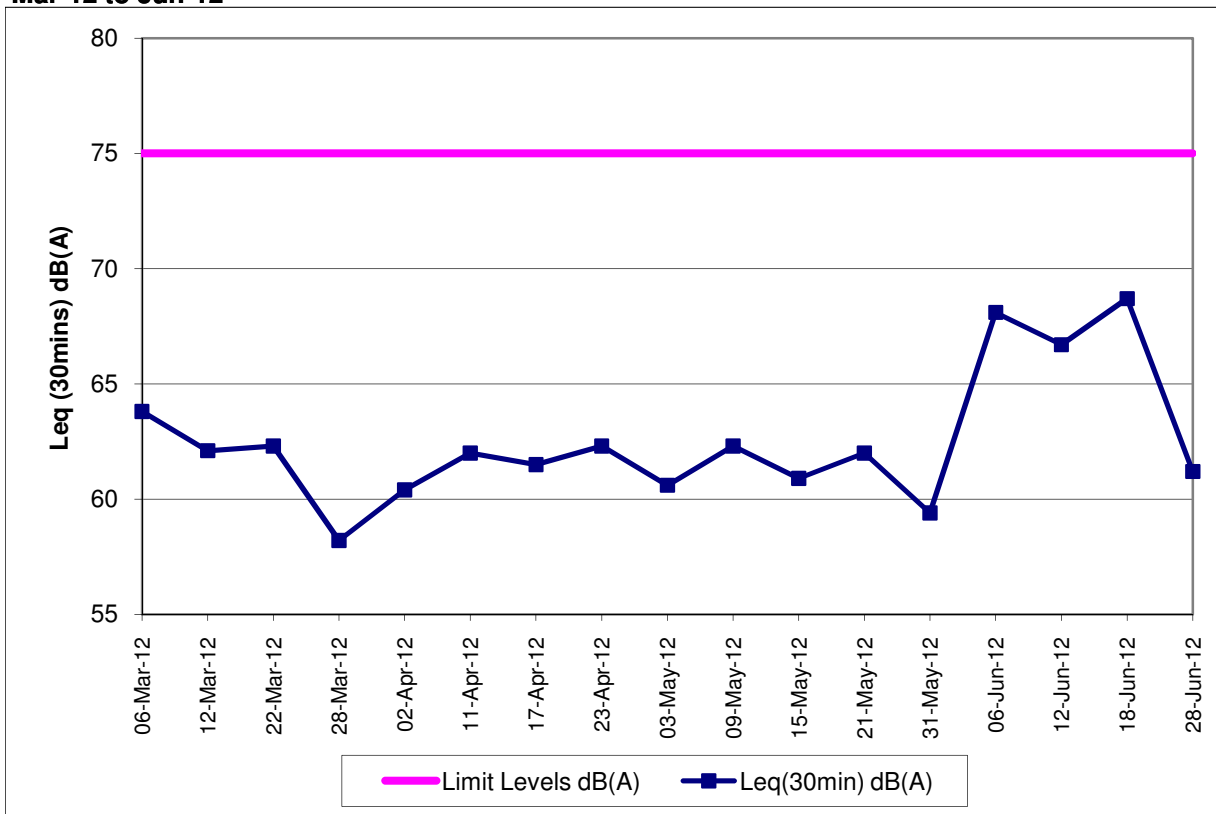
\* means additional noise monitoring

# Measurements were conducted during there was no rainfall

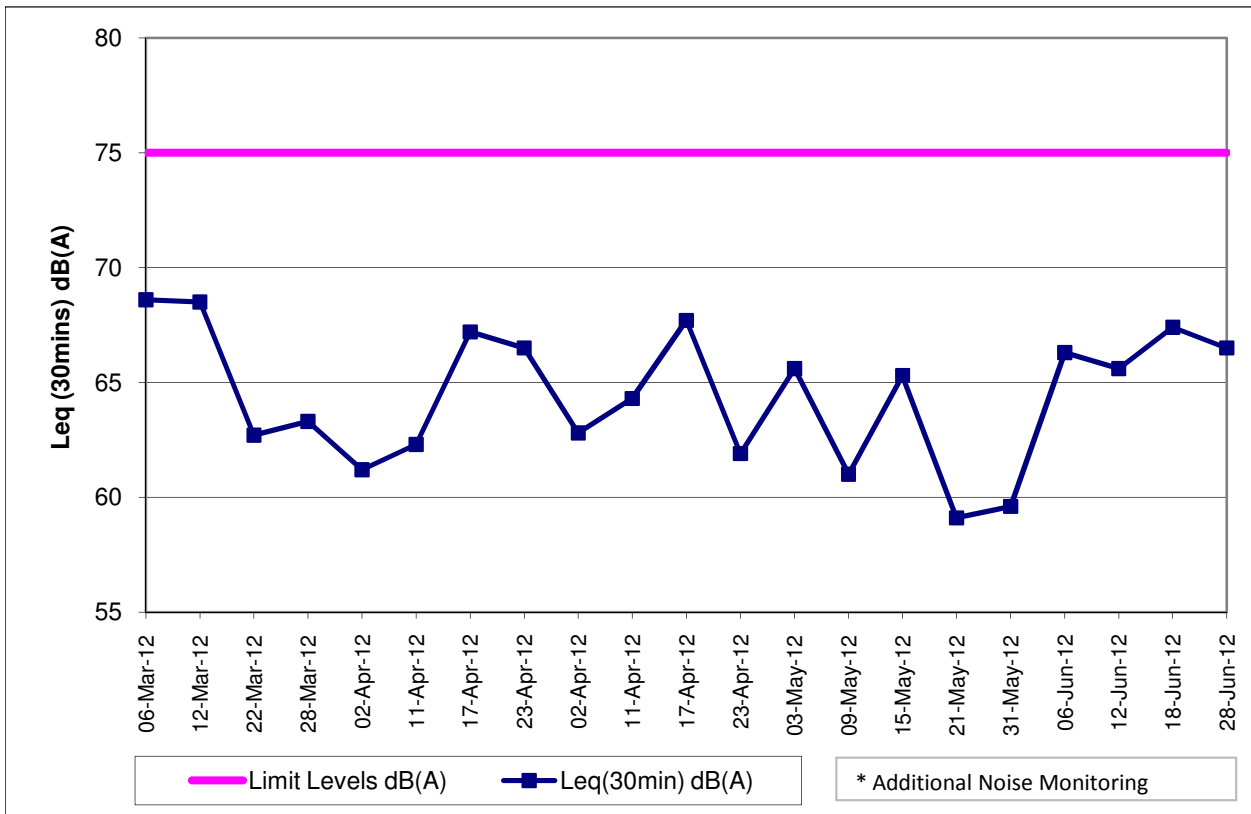
**Contract No. DC/2007/12 - Design and Construction of Tsuen Wan Drainage Tunnel  
Noise Monitoring Results at Sik Sik Yuen Ho Fung College (NSR 1)  
Mar-12 to Jun-12**



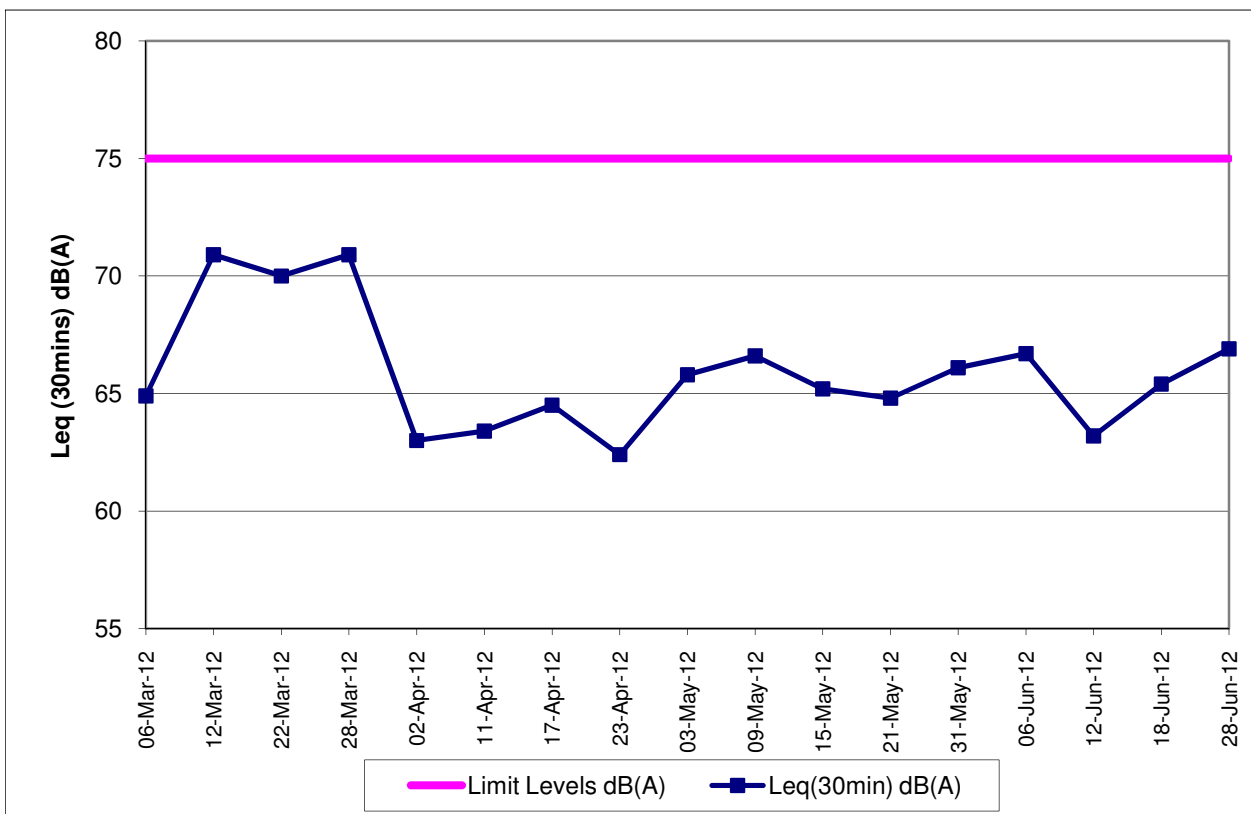
**Contract No. DC/2007/12 - Design and Construction of Tsuen Wan Drainage Tunnel  
Noise Monitoring Results at Hong Hoi Chee Hong Temple (NSR 3)  
Mar-12 to Jun-12**



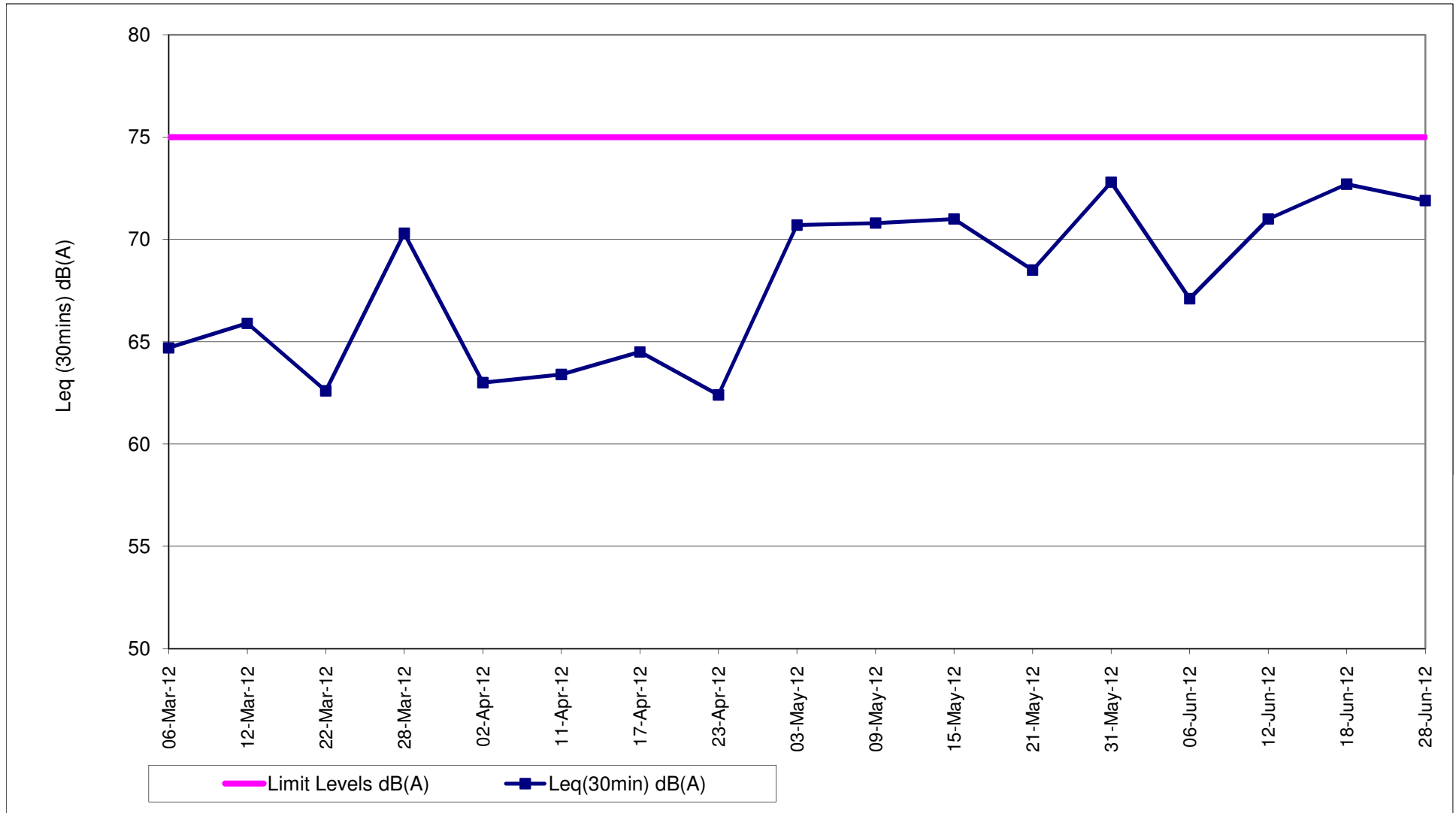
**Contract No. DC/2007/12 - Design and Construction of Tsuen Wan Drainage Tunnel  
Noise Monitoring Results at Squatters (NSR 6)  
Mar-12 to Jun-12**



**Contract No. DC/2007/12 - Design and Construction of Tsuen Wan Drainage Tunnel  
Noise Monitoring Results at Long Beach Gardens (NSR 8)  
Mar-12 to Jun-12**



**Contract No. DC/2007/12 - Design and Construction of Tsuen Wan Drainage Tunnel**  
**Noise Monitoring Results at Greenview Terrace (NSR 9)**  
**Mar-12 to Jun-12**

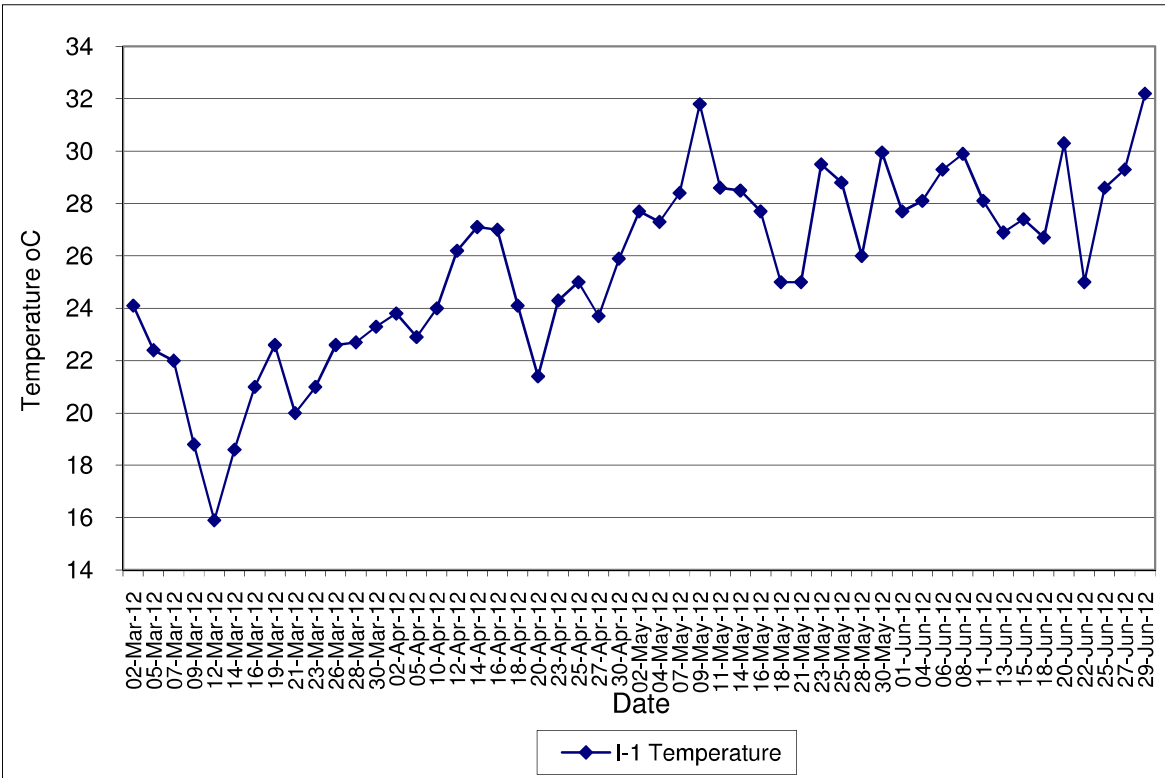


Contract No. DC/2007/12 - Design and Construction of Tsuen Wan Drainage Tunnel

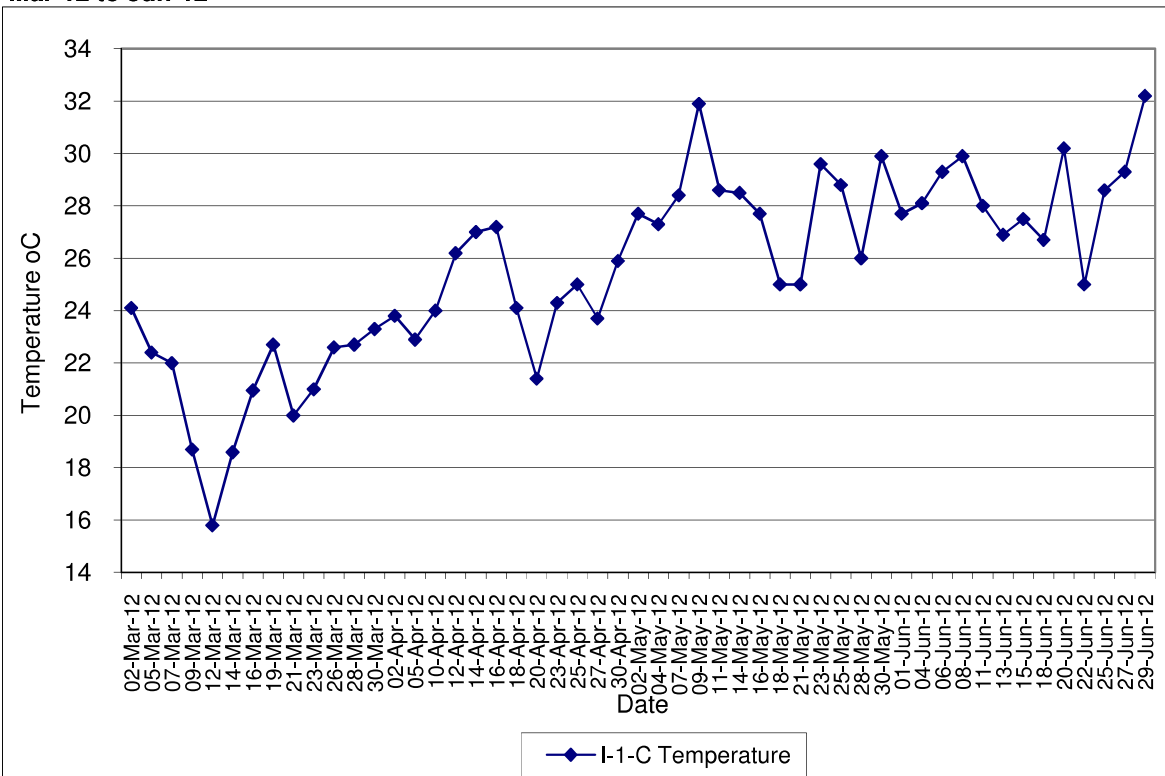
Water Quality Impact Monitoring Results

Monitoring Locations	Date	Start Time	Weather	Water Depth(m)	Temp			DO(mg/L)			Action/Limit Level of DO(mg/L)	pH			Turbidity(NTU)			SS (mg/L)			Action/Limit Level of SS(mg/L)	Remarks	Action to be taken
					1	2	Avg	1	2	Avg		1	2	Avg	1	2	Avg	1	2	Avg			
Sik Sik Yuen Ho Fung College I-1	01-Jun-12	15:20	Sunny	<1	27.70	27.70	27.70	7.11	7.15	7.13	8.55	8.55	8.55	1.90	1.84	1.87	<2.00	<2.00	2.00	Nil			
	04-Jun-12	10:10	Sunny	<1	28.10	28.10	28.10	7.11	7.09	7.10	8.66	8.66	8.66	1.86	1.94	1.90	<2.00	<2.00	2.00	Nil			
	06-Jun-12	15:17	Sunny	<1	29.30	29.30	29.30	6.85	6.87	6.86	8.60	8.60	8.60	2.15	2.26	2.21	<2.00	<2.00	2.00	Nil			
	08-Jun-12	14:45	Sunny	<1	29.90	29.90	29.90	6.89	6.84	6.87	8.66	8.66	8.66	2.04	2.36	2.35	<2.00	<2.00	2.00	Nil			
	11-Jun-12	15:18	Cloudy	<1	28.10	28.10	28.10	7.02	7.04	7.03	8.55	8.55	8.55	3.90	3.97	3.94	<2.00	<2.00	2.00	Nil			
	13-Jun-12	13:50	Cloudy	<1	26.90	26.90	26.90	7.38	7.32	7.35	8.45	8.45	8.45	3.62	3.60	3.61	<2.00	<2.00	2.00	Nil			
	15-Jun-12	15:25	Cloudy	<1	27.40	27.40	27.40	7.12	7.15	7.14	8.55	8.55	8.55	2.39	2.44	2.42	<2.00	<2.00	2.00	Nil			
	18-Jun-12	13:58	Rainy	<1	26.70	26.70	26.70	7.15	7.18	7.17	8.60	8.60	8.60	13.02	12.95	12.99	8.60	8.40	8.50	Nil			
	20-Jun-12	10:20	Sunny	<1	30.30	30.30	30.30	6.98	6.92	6.95	8.40	8.40	8.40	3.21	3.18	3.20	<2.00	<2.00	2.00	Nil			
	22-Jun-12	15:12	Rainy	<1	25.00	25.00	25.00	7.80	7.82	7.81	7.96	7.96	7.96	3.53	3.60	3.57	<2.00	<2.00	2.00	Nil			
	25-Jun-12	14:18	Cloudy	<1	28.60	28.60	28.60	7.42	7.37	7.40	8.12	8.12	8.12	2.70	2.82	2.76	2.60	2.20	2.40	Nil	Steel Bending		
	27-Jun-12	15:42	Sunny	<1	29.30	29.30	29.30	7.36	7.32	7.34	7.95	7.95	7.95	3.60	3.64	3.62	2.80	2.80	2.80	Nil	Steel Bending		
	29-Jun-12	15:13	Sunny	<1	32.20	32.20	32.20	7.06	7.08	7.07	7.91	7.91	7.91	3.60	3.64	3.62	3.20	3.90	3.55	Nil			
	Sik Sik Yuen Ho Fung College I-1-C	01-Jun-12	15:10	Sunny	<1	27.70	27.70	27.70	7.07	7.09	7.08	8.55	8.55	8.55	1.85	1.89	1.87	<2.00	<2.00	2.00	Nil		
		04-Jun-12	10:00	Sunny	<1	28.10	28.10	28.10	7.15	7.12	7.14	8.66	8.66	8.66	1.92	1.98	1.95	<2.00	<2.00	2.00	Nil		
06-Jun-12		15:06	Sunny	<1	29.30	29.30	29.30	6.81	6.84	6.83	8.61	8.60	8.61	2.22	2.37	2.30	<2.00	<2.00	2.00	Nil			
08-Jun-12		14:35	Sunny	<1	29.90	29.90	29.90	6.89	6.82	6.90	8.66	8.66	8.66	2.29	2.35	2.32	<2.00	<2.00	2.00	Nil			
11-Jun-12		15:08	Cloudy	<1	28.00	28.00	28.00	6.97	7.00	6.99	8.55	8.55	8.55	4.04	3.95	4.00	<2.00	<2.00	2.00	Nil			
13-Jun-12		13:40	Cloudy	<1	26.90	26.90	26.90	7.34	7.36	7.35	8.45	8.45	8.45	3.53	3.66	3.60	<2.00	<2.00	2.00	Nil			
15-Jun-12		15:37	Cloudy	<1	27.50	27.50	27.50	7.01	7.04	7.03	8.55	8.56	8.56	2.31	2.33	2.32	<2.00	<2.00	2.00	Nil			
18-Jun-12		13:45	Rainy	<1	26.70	26.70	26.70	7.10	7.12	7.11	8.61	8.60	8.61	13.15	13.27	13.21	7.70	7.50	7.60	Nil			
20-Jun-12		10:05	Sunny	<1	30.20	30.20	30.20	6.95	6.78	6.87	8.41	8.41	8.41	3.23	3.42	3.33	<2.00	<2.00	2.00	Nil			
22-Jun-12		15:00	Rainy	<1	25.00	25.00	25.00	7.73	7.77	7.75	7.96	7.96	7.96	3.70	3.62	3.66	<2.00	<2.00	2.00	Nil			
25-Jun-12		14:05	Cloudy	<1	28.60	28.60	28.60	7.43	7.39	7.41	8.12	8.12	8.12	2.75	2.65	2.70	<2.00	<2.00	2.00	Nil			
27-Jun-12		15:30	Sunny	<1	29.30	29.30	29.30	7.31	7.34	7.33	7.95	7.95	7.95	3.65	3.69	3.67	2.80	3.80	3.30	Nil			
29-Jun-12		15:00	Sunny	<1	32.20	32.20	32.20	6.99	7.03	7.01	7.90	7.90	7.90	3.66	3.74	3.70	4.00	3.20	3.60	Nil			
Hong Hoi Chee Hong Temple I-2		01-Jun-12	15:45	Sunny	<1	28.00	28.00	28.00	7.03	7.05	7.04	8.36	8.36	8.36	1.77	1.85	1.81	<2.00	<2.00	2.00	Nil	Drilling	
		04-Jun-12	10:36	Sunny	<1	28.10	28.00	28.05	6.98	7.00	6.99	8.50	8.50	8.50	1.70	1.74	1.72	<2.00	<2.00	2.00	Nil	Drilling & Concrete work	
	06-Jun-12	14:33	Sunny	<1	29.40	29.40	29.40	6.68	6.72	6.70	8.55	8.55	8.55	1.84	1.90	1.87	<2.00	<2.00	2.00	Nil	Drilling		
	08-Jun-12	15:10	Sunny	<1	30.00	30.00	30.00	6.69	6.71	6.70	8.61	8.62	8.62	2.18	2.14	2.16	<2.00	<2.00	2.00	Nil	Drilling		
	11-Jun-12	15:45	Cloudy	<1	28.40	28.40	28.40	6.93	6.93	6.93	8.57	8.57	8.57	5.62	5.54	5.58	3.80	3.80	3.90	Nil	Drilling		
	13-Jun-12	14:15	Cloudy	<1	26.80	26.80	26.80	7.06	7.11	7.09	8.62	8.62	8.62	8.66	8.72	8.69	7.70	8.20	7.95	Nil	Drilling		
	15-Jun-12	15:06	Cloudy	<1	27.80	27.80	27.80	7.03	7.06	7.05	8.52	8.51	8.52	1.97	1.92	1.95	<2.00	<2.00	2.00	Nil	Drilling		
	18-Jun-12	13:28	Rainy	<1	26.80	26.80	26.80	7.05	7.10	7.08	8.48	8.49	8.49	6.04	6.25	6.15	3.80	3.90	3.85	Nil	Drilling		
	20-Jun-12	09:49	Sunny	<1	30.60	30.60	30.60	6.65	6.62	6.64	8.37	8.36	8.37	3.50	3.35	3.43	<2.00	<2.00	2.00	Nil	Drilling & Concrete work		
	22-Jun-12	15:44	Rainy	<1	25.10	25.10	25.10	7.92	7.95	7.94	7.92	7.92	7.92	5.10	5.22	5.16	<2.00	<2.00	2.00	Nil	Drilling		
	25-Jun-12	14:48	Cloudy	<1	28.70	28.70	28.70	7.39	7.31	7.35	8.07	8.07	8.07	1.72	1.77	1.75	<2.00	<2.00	2.00	Nil	Drilling & Concrete work		
	27-Jun-12	16:10	Sunny	<1	29.40	29.40	29.40	7.25	7.23	7.24	7.98	7.98	7.98	1.74	1.77	1.76	<2.00	<2.00	2.00	Nil	Drilling		
	29-Jun-12	15:40	Sunny	<1	31.80	31.80	31.80	6.94	6.96	6.95	7.98	7.98	7.98	1.88	1.93	1.91	<2.00	<2.00	2.00	Nil	Drilling		
	Hong Hoi Chee Hong Temple I-2-C	01-Jun-12	15:36	Sunny	<1	27.90	27.90	27.90	6.98	7.01	7.00	8.35	8.36	8.36	1.73	1.86	1.80	<2.00	<2.00	2.00	Nil		
		04-Jun-12	10:27	Sunny	<1	28.10	28.10	28.10	6.91	6.95	6.93	8.50	8.50	8.50	1.62	1.74	1.68	<2.00	<2.00	2.00	Nil		
06-Jun-12		14:20	Sunny	<1	29.40	29.40	29.40	6.63	6.66	6.65	8.55	8.55	8.55	1.81	1.87	1.84	<2.00	<2.00	2.00	Nil			
08-Jun-12		15:00	Sunny	<1	30.00	30.00	30.00	6.58	6.66	6.62	8.62	8.62	8.62	2.15	2.30	2.23	2.60	3.40	3.00	Nil			
11-Jun-12		15:35	Cloudy	<1	28.40	28.40	28.40	6.88	6.91	6.90	8.57	8.57	8.57	5.70	5.77	5.74	9.10	9.90	9.50	Nil			
13-Jun-12		14:06	Cloudy	<1	26.80	26.80	26.80	6.99	7.04	7.02	8.62	8.61	8.62	8.96	9.04	9.00	8.30	7.80	8.05	Nil			
15-Jun-12		14:55	Cloudy	<1	27.70	27.70	27.70	6.97	7.01	6.99	8.50	8.50	8.50	1.90	1.94	1.92	<2.00	<2.00	2.00	Nil			
18-Jun-12		13:15	Rainy	<1	26.80	26.80	26.80	7.00	6.97	6.99	8.47	8.47	8.47	6.12	6.28	6.20	4.50	3.20	3.85	Nil			
20-Jun-12		09:36	Sunny	<1	30.60	30.60	30.60	6.83	6.85	6.84	8.37	8.36	8.37	3.41	3.36	3.39	2.80	2.90	2.55	Nil			
22-Jun-12		15:30	Rainy	<1	25.10	25.10	25.10	7.84	7.89	7.87	7.92	7.92	7.92	5.10	5.22	5.16	<2.00	<2.00	2.00	Nil			
25-Jun-12		14:33	Cloudy	<1	28.70	28.70	28.70	7.48	7.44	7.46	8.07	8.07	8.07	1.66	1.80	1.73	<2.00	<2.00	2.00	Nil			
27-Jun-12		15:57	Sunny	<1	29.40	29.40	29.40	7.41	7.38	7.40	7.99	7.99	7.99	1.71	1.80	1.76	<2.00	<2.00	2.00	Nil			
29-Jun-12		15:30	Sunny	<1	31.80	31.80	31.80	6.92	6.89	6.91	7.98	7.98	7.98	1.90	1.97	1.94	<2.00	<2.00	2.00	Nil			
Squatters I-3		01-Jun-12	16:20	Sunny	<1	28.10	28.10	28.10	6.90	6.93	6.92	8.60	8.60	8.60	1.92	1.97	1.95	<2.00	<2.00	2.00	Nil	Crane operation and Excavation work	
		04-Jun-12	11:10	Sunny	<1	28.00	28.00	28.00	6.84	6.87	6.86	8.35	8.35	8.35	2.18	2.22	2.20	<2.00	<2.00	2.00	Nil	Crane operation and rock breaking	
	06-Jun-12	13:50	Sunny	<1	29.00	29.00	29.00	6.59	6.64	6.62	8.52	8.52	8.52	2.30	2.25	2.28	<						

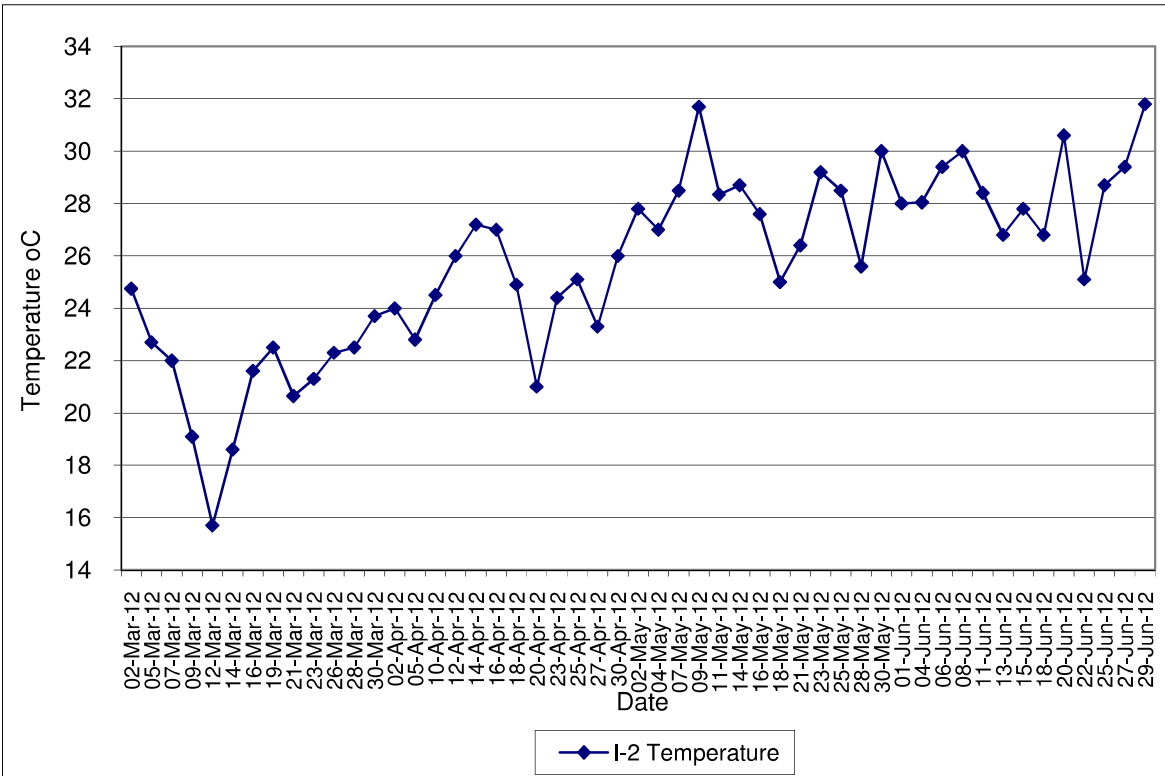
**Contract No. DC/2007/12 - Design and Construction of Tsuen Wan Drainage Tunnel  
 Water Quality Results at Sik Sik Yuen Ho Fung College (I-1)  
 Mar-12 to Jun-12**



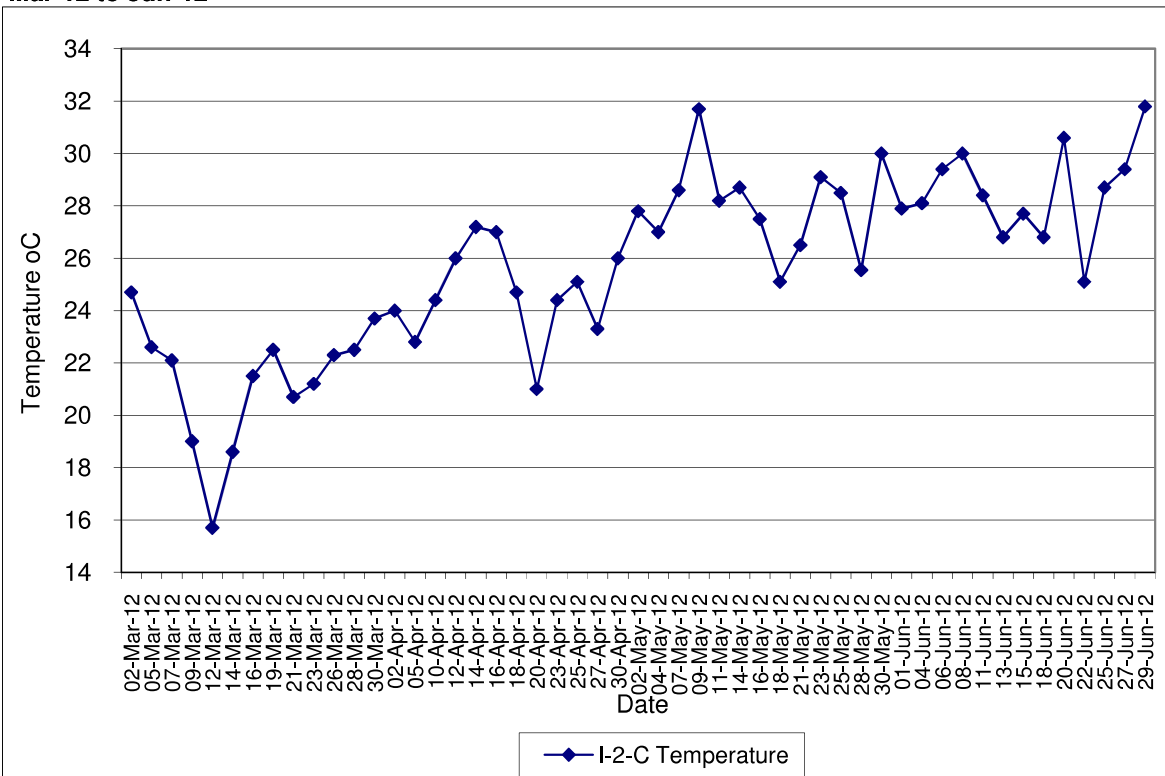
**Contract No. DC/2007/12 - Design and Construction of Tsuen Wan Drainage Tunnel  
 Water Quality Results at Sik Sik Yuen Ho Fung College (I-1-C)  
 Mar-12 to Jun-12**



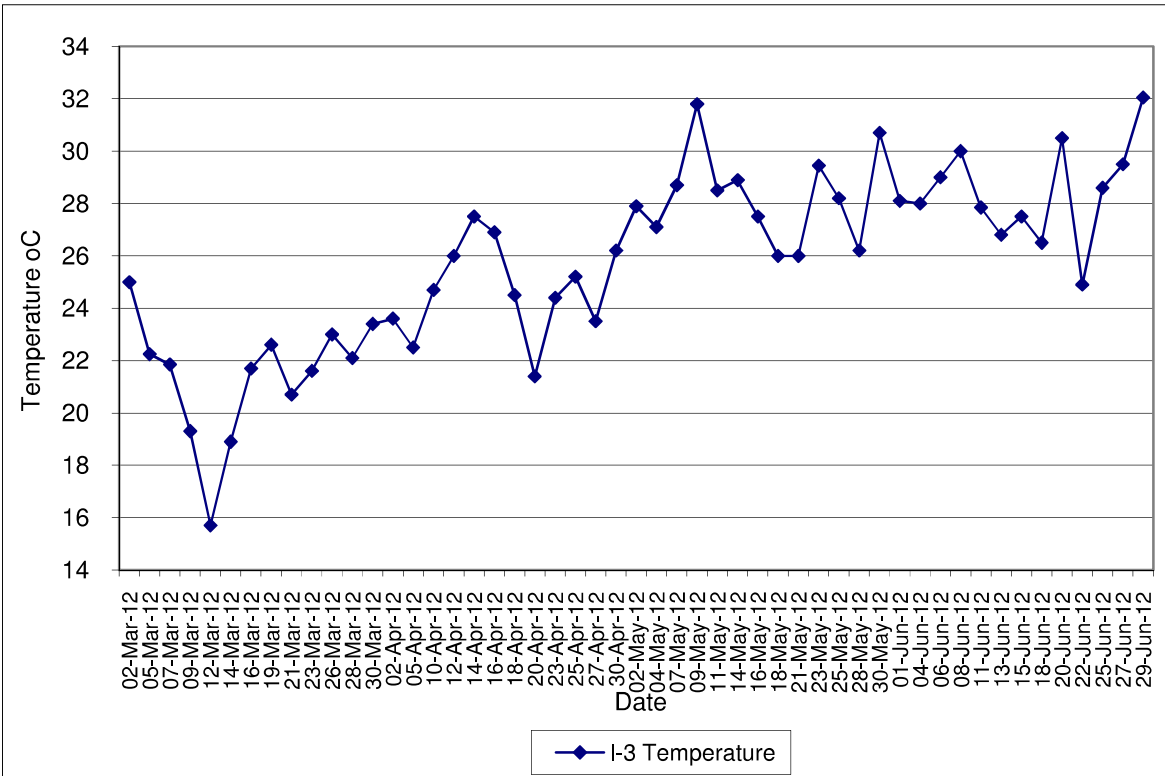
**Contract No. DC/2007/12 - Design and Construction of Tsuen Wan Drainage Tunnel**  
**Water Quality Results at Hong Hoi Chee Hong Temple (I-2)**  
**Mar-12 to Jun-12**



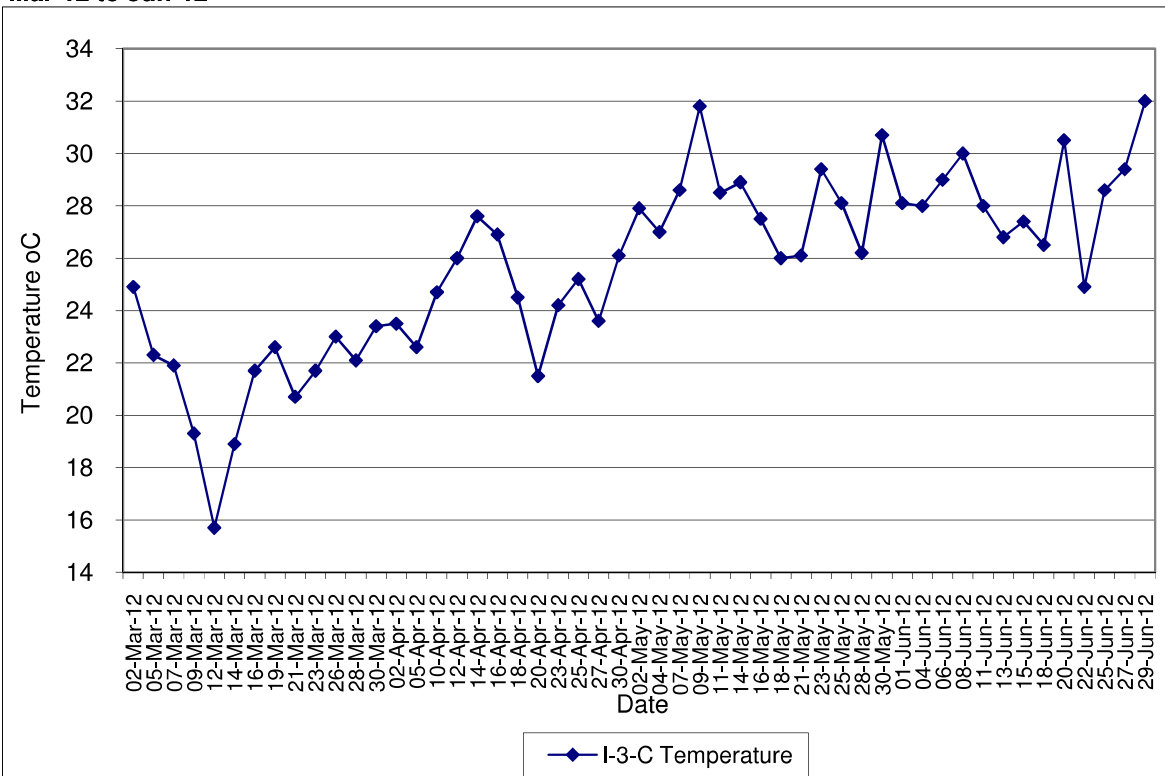
**Contract No. DC/2007/12 - Design and Construction of Tsuen Wan Drainage Tunnel**  
**Water Quality Results at Hong Hoi Chee Hong Temple (I-2-C)**  
**Mar-12 to Jun-12**



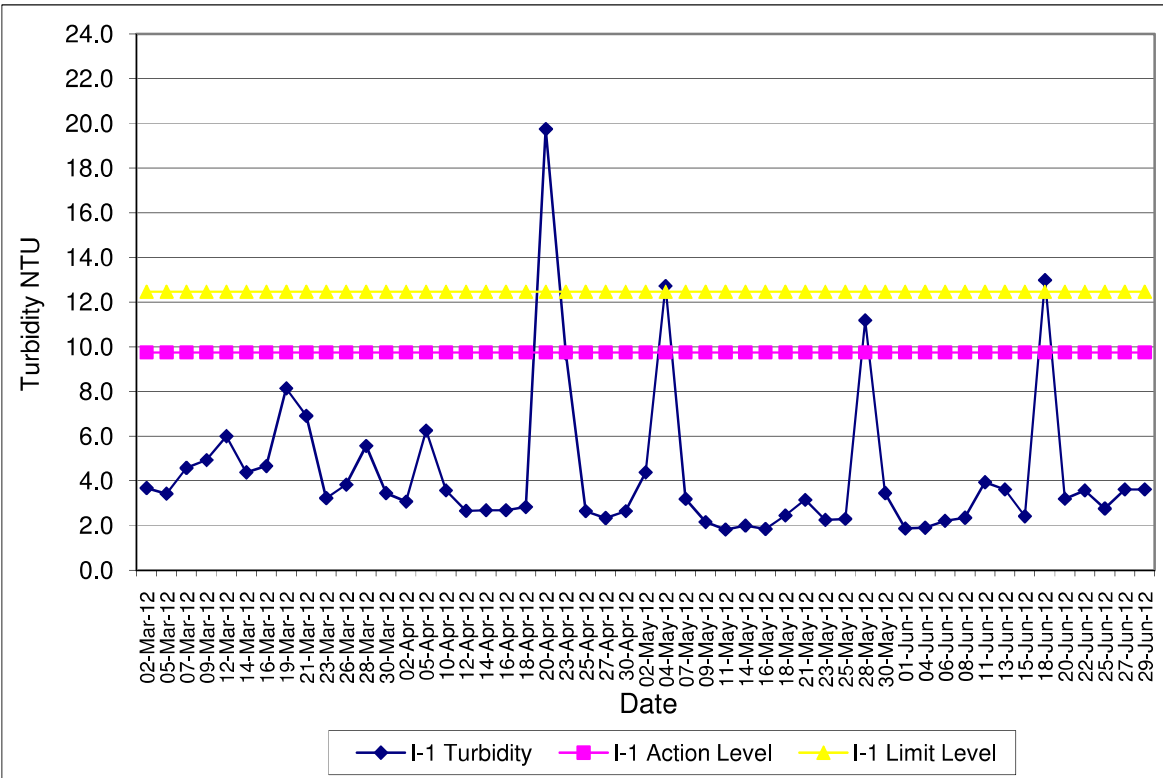
**Contract No. DC/2007/12 - Design and Construction of Tsuen Wan Drainage Tunnel**  
**Water Quality Results at Squatters (I-3)**  
**Mar-12 to Jun-12**



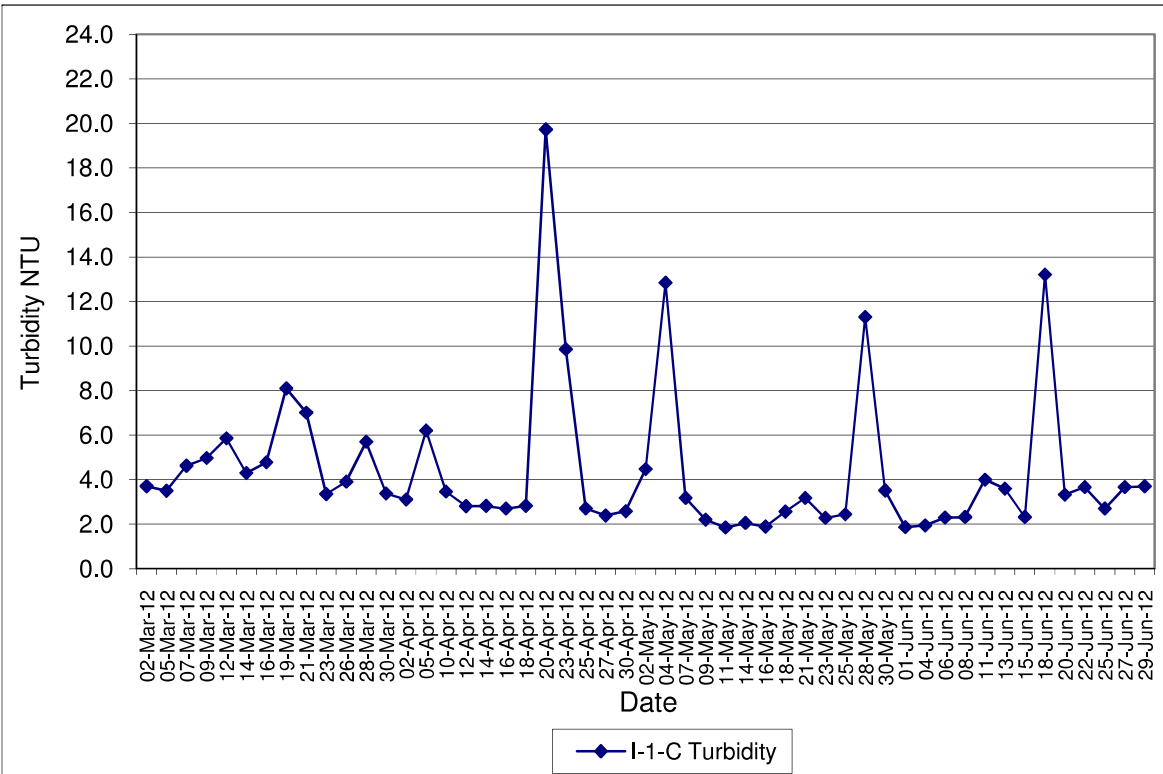
**Contract No. DC/2007/12 - Design and Construction of Tsuen Wan Drainage Tunnel**  
**Water Quality Results at Squatters (I-3-C)**  
**Mar-12 to Jun-12**



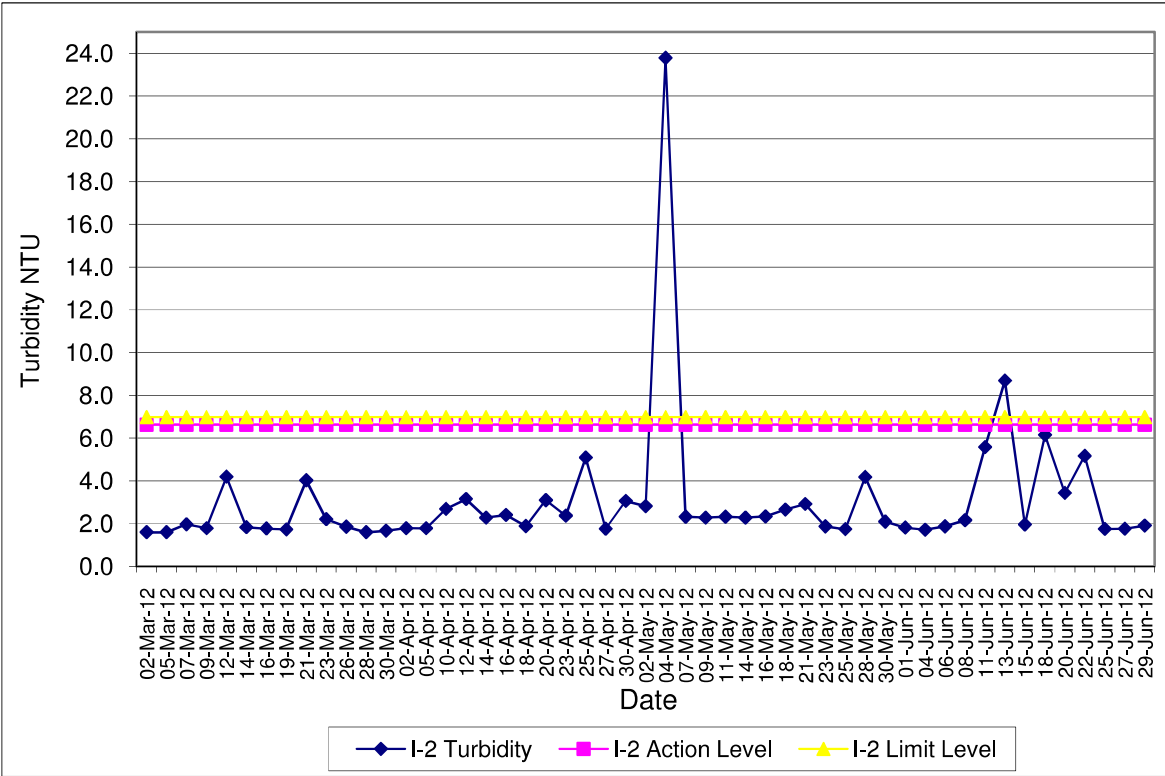
**Contract No. DC/2007/12 - Design and Construction of Tsuen Wan Drainage Tunnel  
 Water Quality Results at Sik Sik Yuen Ho Fung College (I-1)  
 Mar-12 to Jun-12**



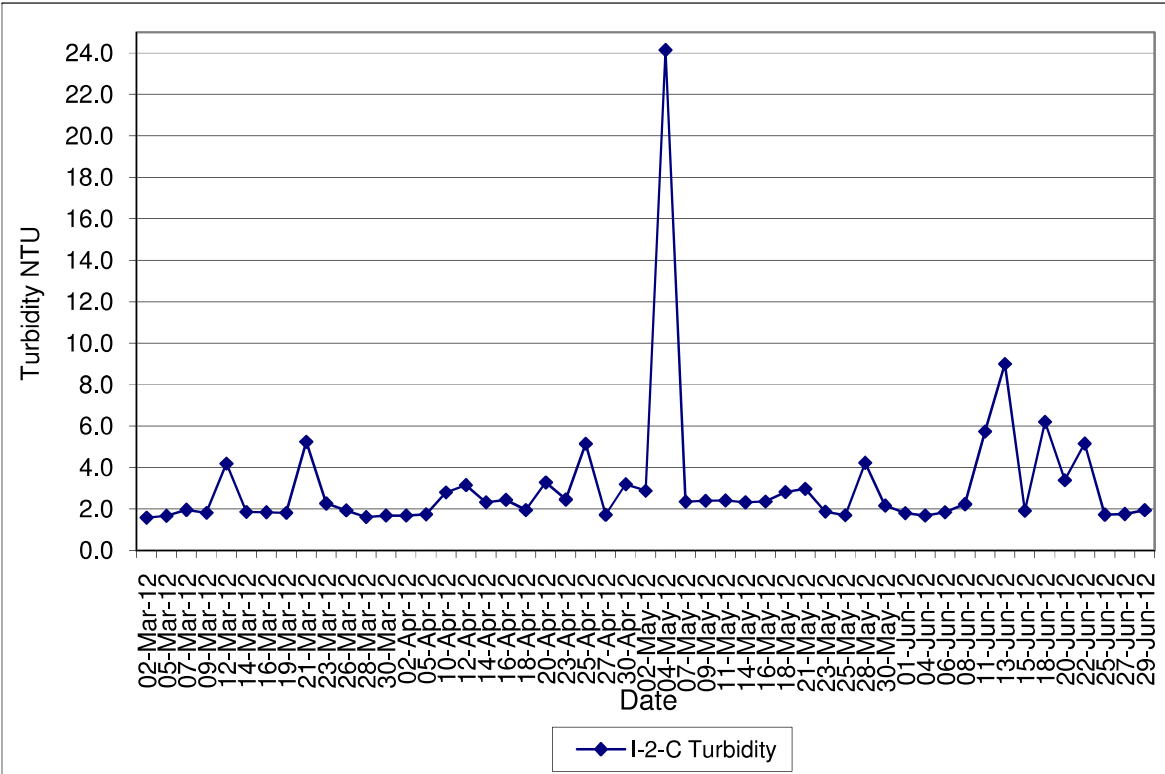
**Contract No. DC/2007/12 - Design and Construction of Tsuen Wan Drainage Tunnel  
 Water Quality Results at Sik Sik Yuen Ho Fung College (I-1-C)  
 Mar-12 to Jun-12**



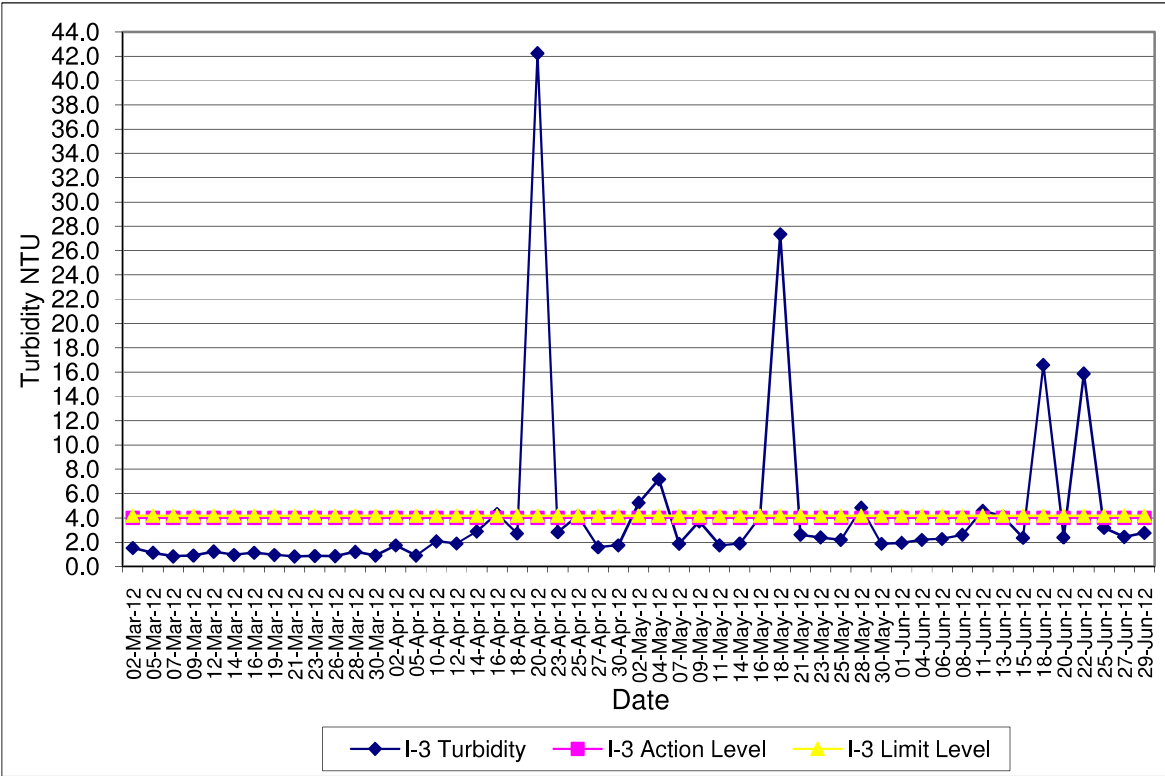
**Contract No. DC/2007/12 - Design and Construction of Tsuen Wan Drainage Tunnel  
 Water Quality Results at Hong Hoi Chee Hong Temple (I-2)  
 Mar-12 to Jun-12**



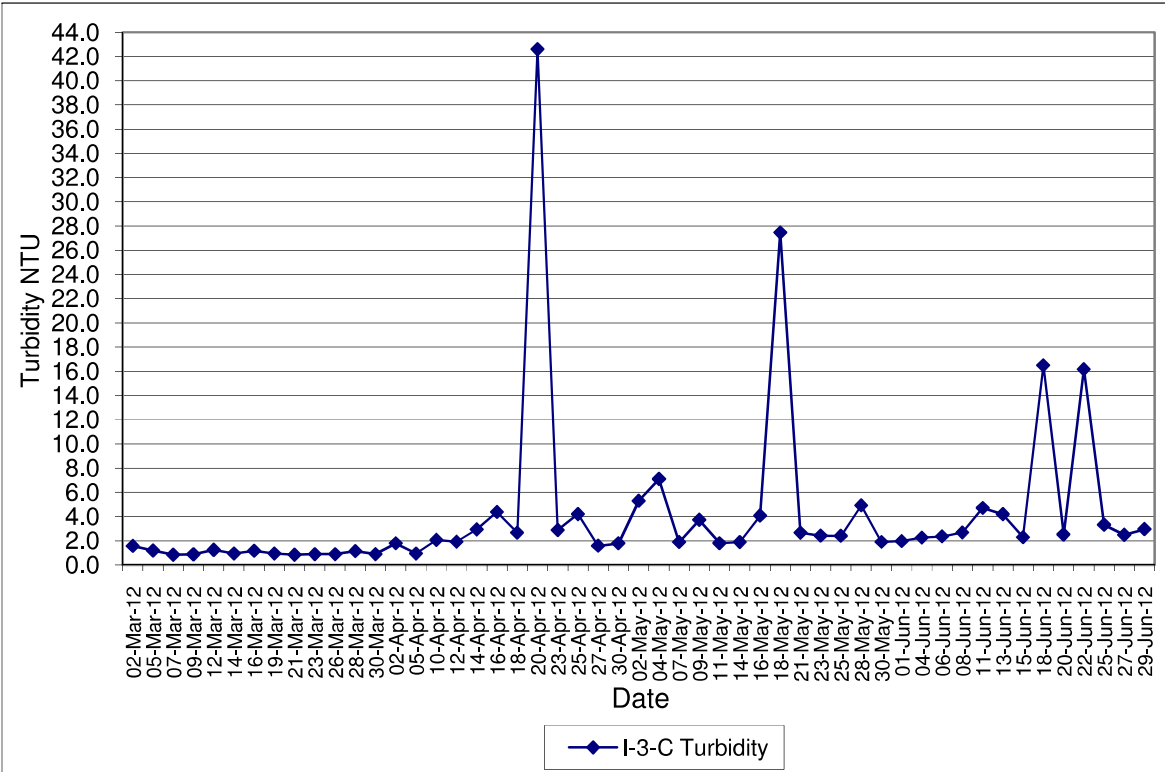
**Contract No. DC/2007/12 - Design and Construction of Tsuen Wan Drainage Tunnel  
 Water Quality Results at Hong Hoi Chee Hong Temple (I-2-C)  
 Mar-12 to Jun-12**



**Contract No. DC/2007/12 - Design and Construction of Tsuen Wan Drainage Tunnel  
Water Quality Results at Squatters (I-3)  
Mar-12 to Jun-12**



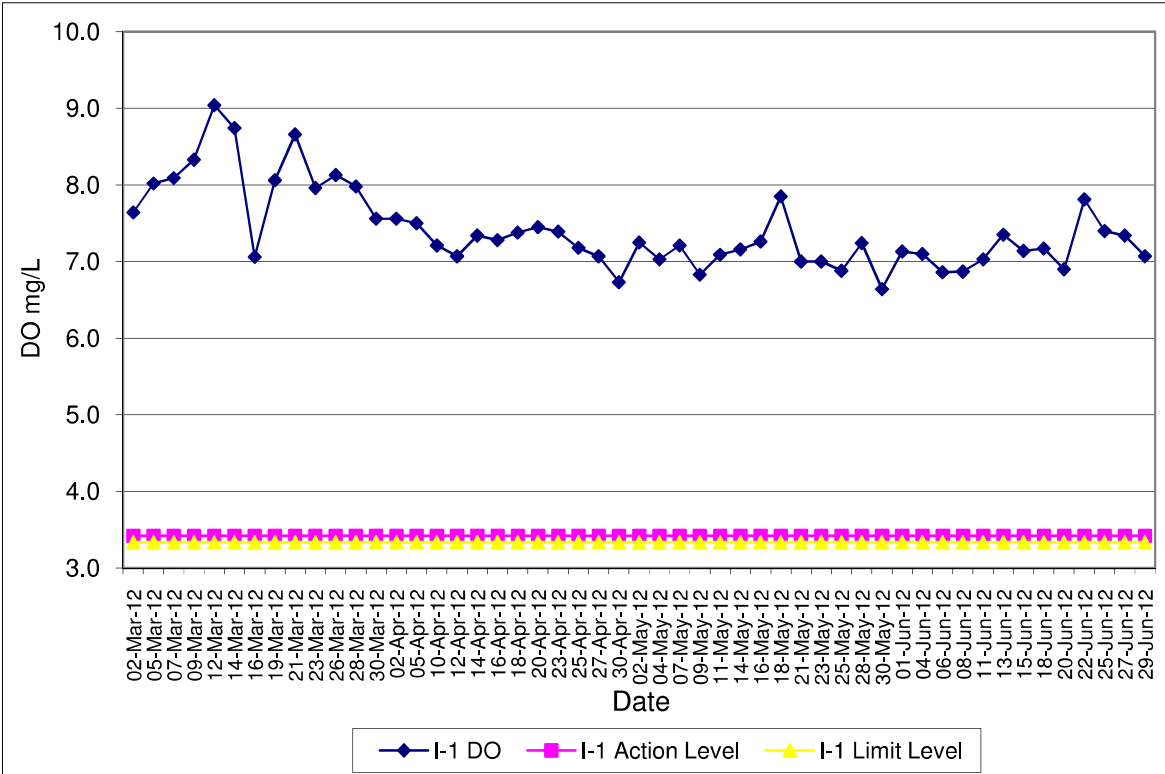
**Contract No. DC/2007/12 - Design and Construction of Tsuen Wan Drainage Tunnel  
Water Quality Results at Squatters (I-3-C)  
Mar-12 to Jun-12**



**Contract No. DC/2007/12 - Design and Construction of Tsuen Wan Drainage Tunnel  
Water Quality Results at Sik Sik Yuen Ho Fung College (I-1)**

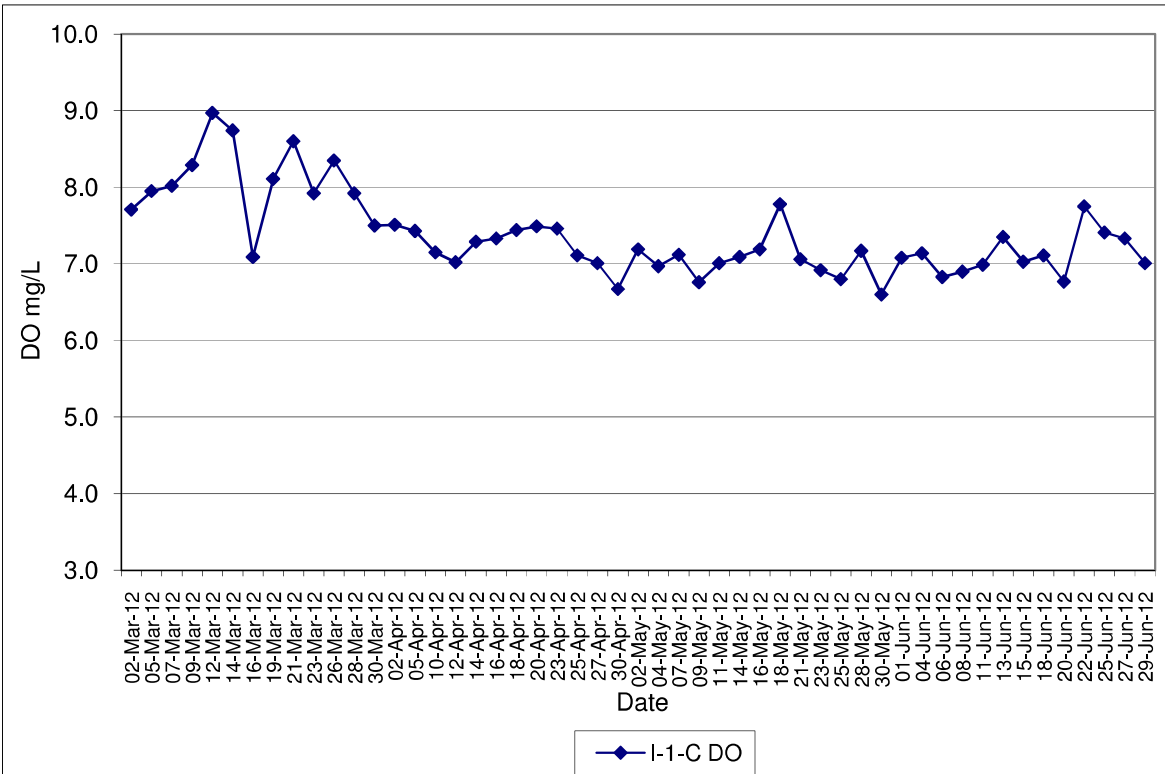
**Mar-12 to Jun-12**

Note: Exceedances of Action / Limit Levels occur when the levels of DO are below the respective limit levels.



**Contract No. DC/2007/12 - Design and Construction of Tsuen Wan Drainage Tunnel  
Water Quality Results at Sik Sik Yuen Ho Fung College (I-1-C)**

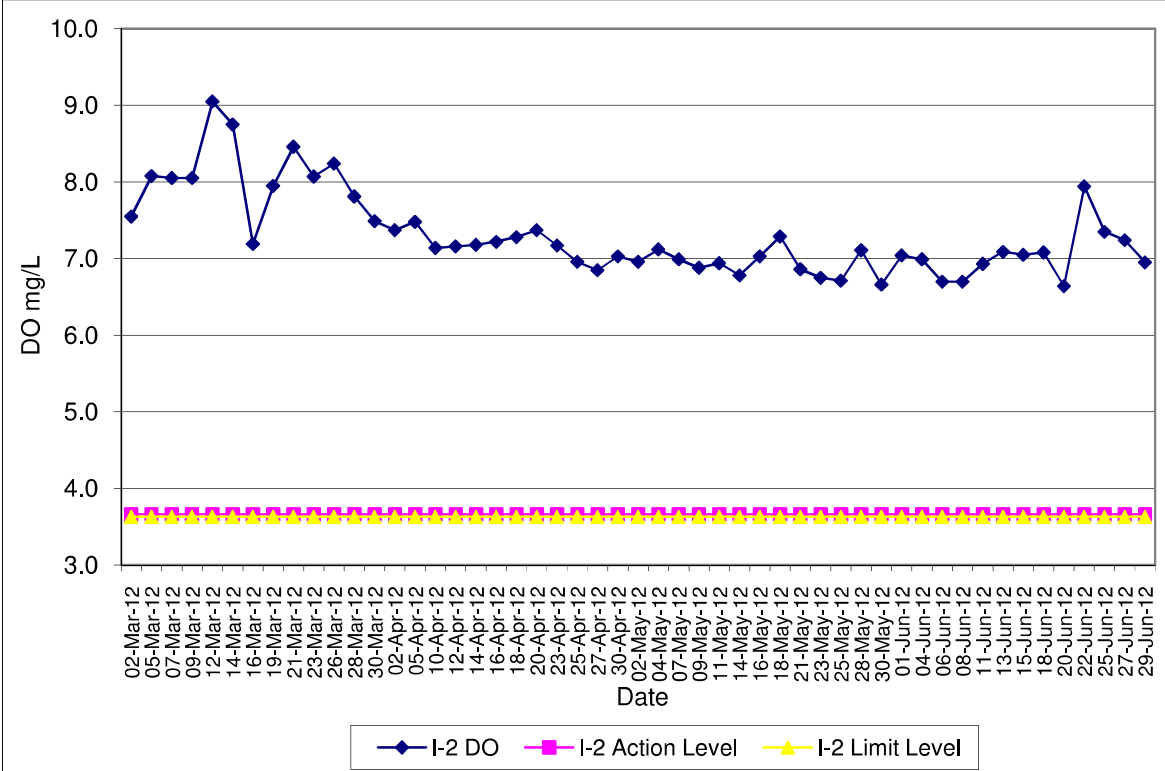
**Mar-12 to Jun-12**



**Contract No. DC/2007/12 - Design and Construction of Tsuen Wan Drainage Tunnel  
Water Quality Results at Hong Hoi Chee Hong Temple (I-2)**

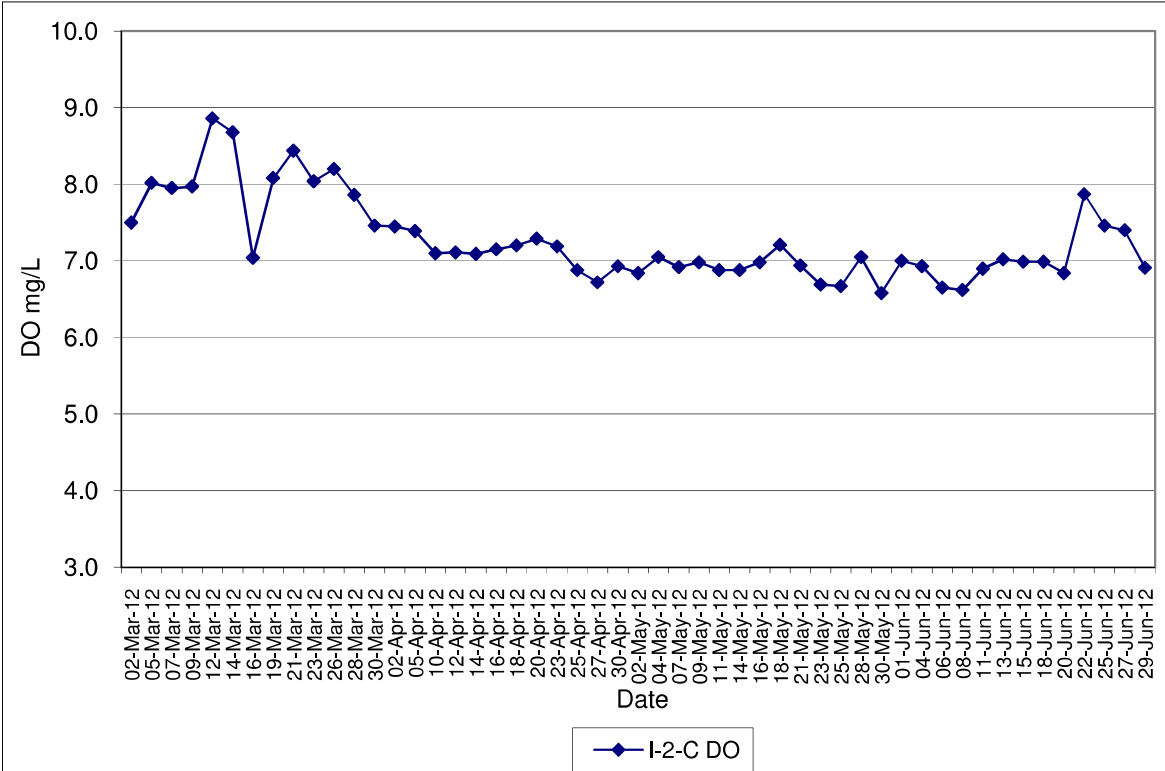
**Mar-12 to Jun-12**

Note: Exceedances of Action / Limit Levels occur when the levels of DO are below the respective limit levels.



**Contract No. DC/2007/12 - Design and Construction of Tsuen Wan Drainage Tunnel  
Water Quality Results at Hong Hoi Chee Hong Temple (I-2-C)**

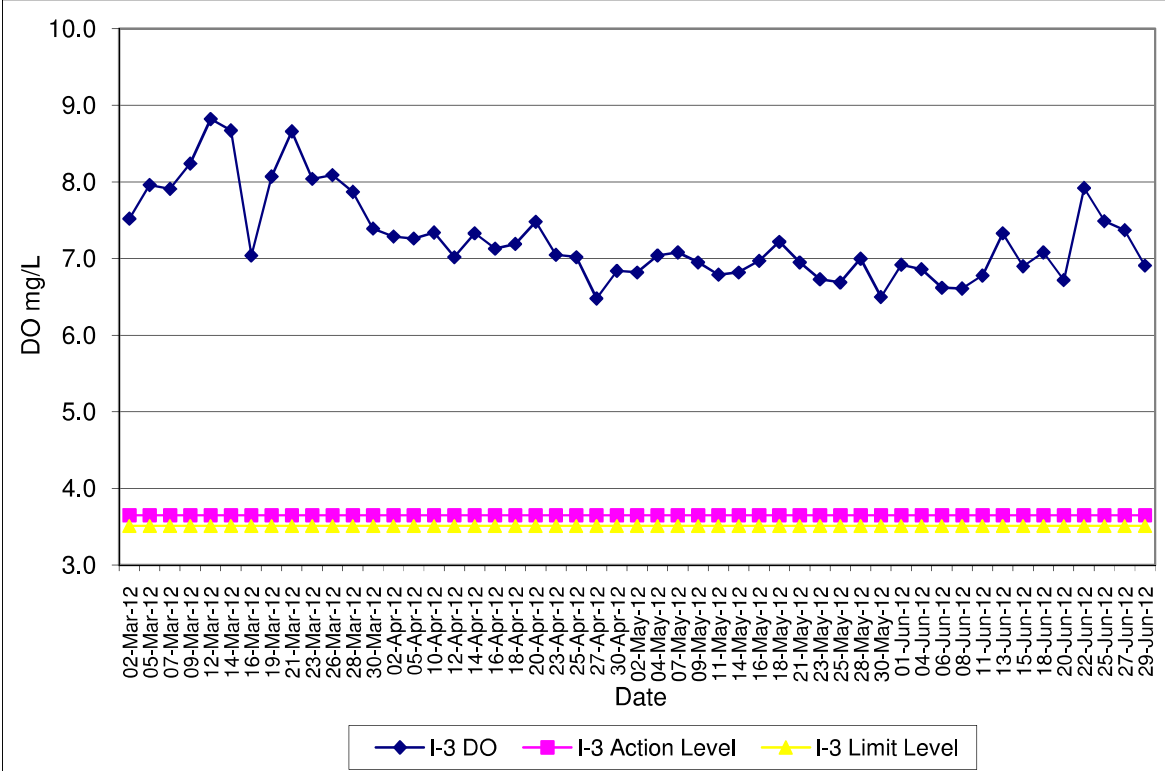
**Mar-12 to Jun-12**



**Contract No. DC/2007/12 - Design and Construction of Tsuen Wan Drainage Tunnel  
Water Quality Results at Squatters (I-3)**

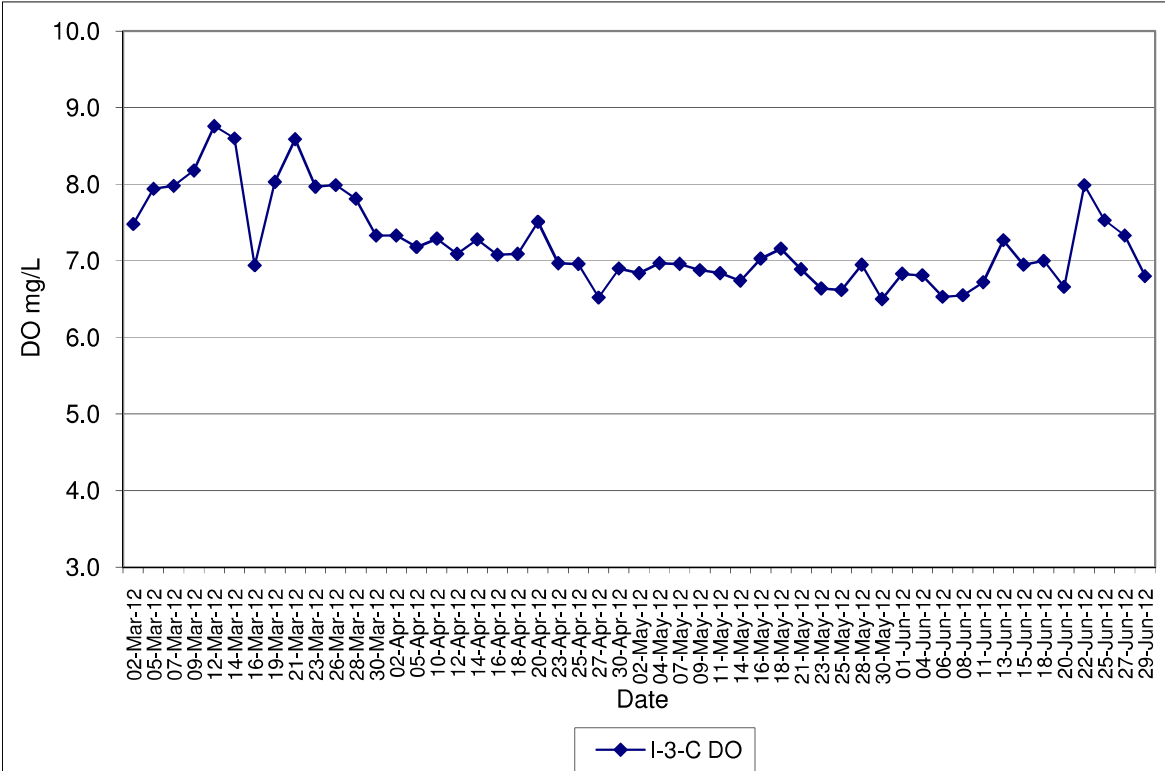
**Mar-12 to Jun-12**

Note: Exceedances of Action / Limit Levels occur when the levels of DO are below the respective limit levels.

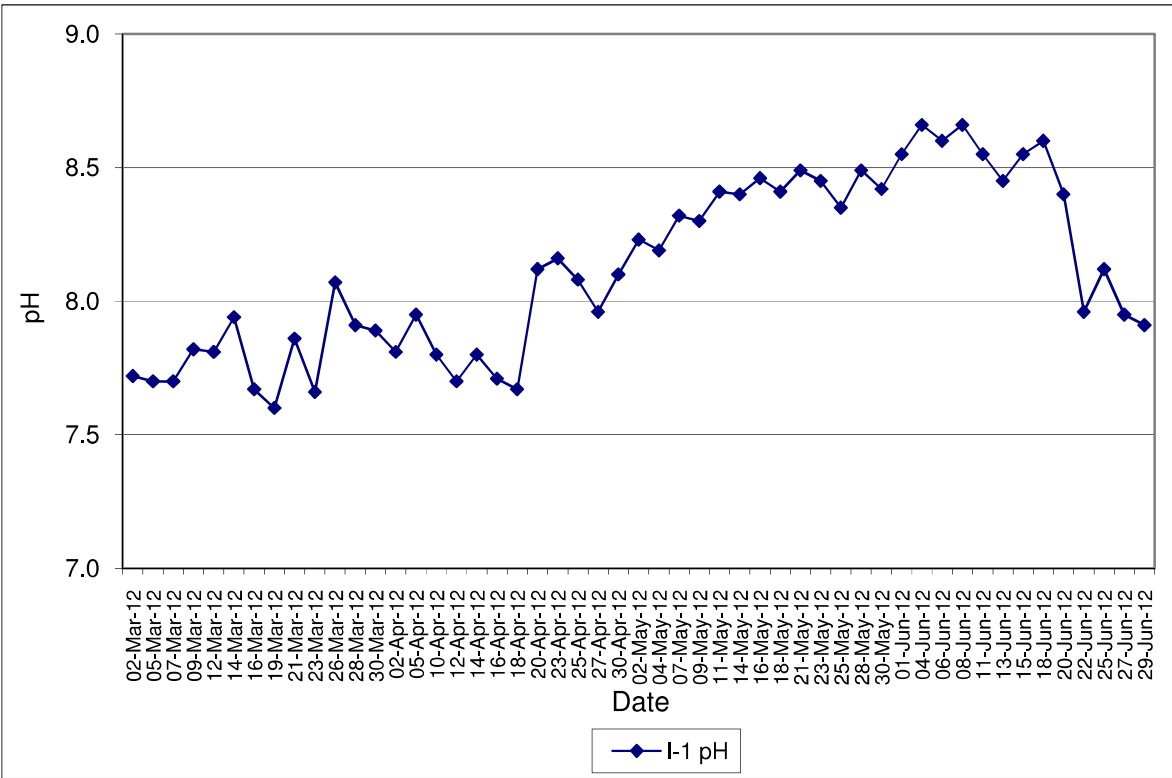


**Contract No. DC/2007/12 - Design and Construction of Tsuen Wan Drainage Tunnel  
Water Quality Results at Squatters (I-3-C)**

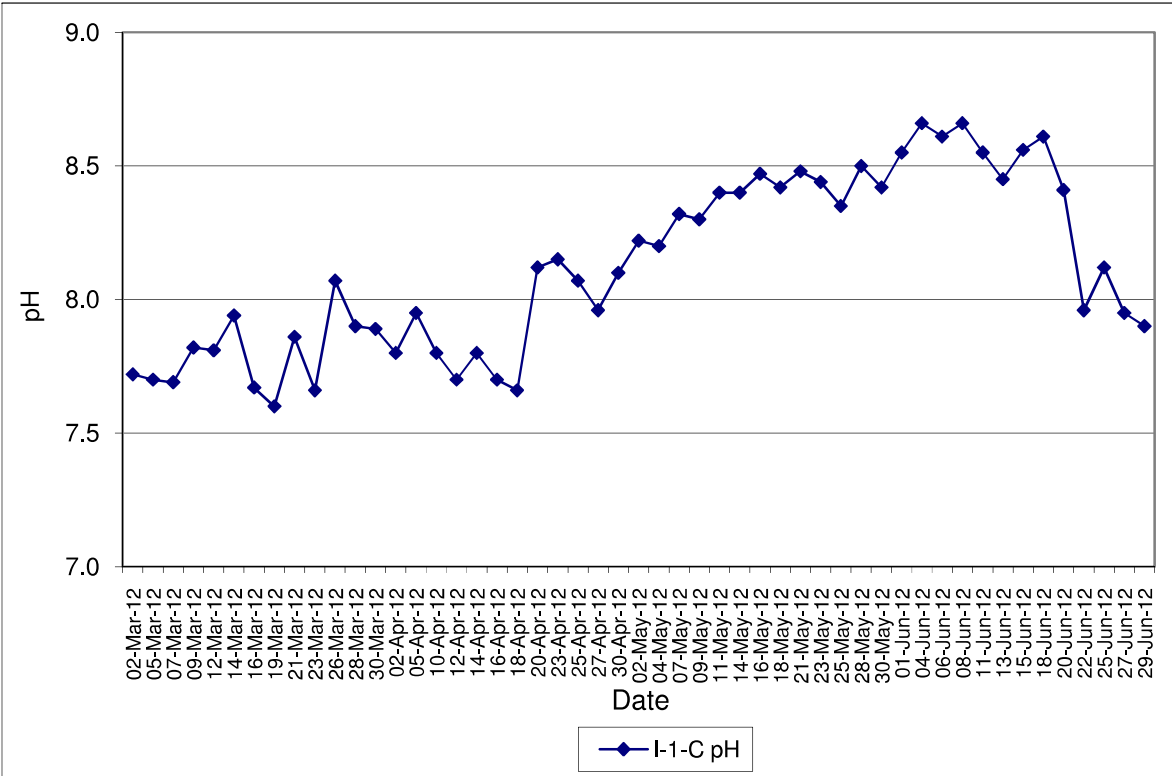
**Mar-12 to Jun-12**



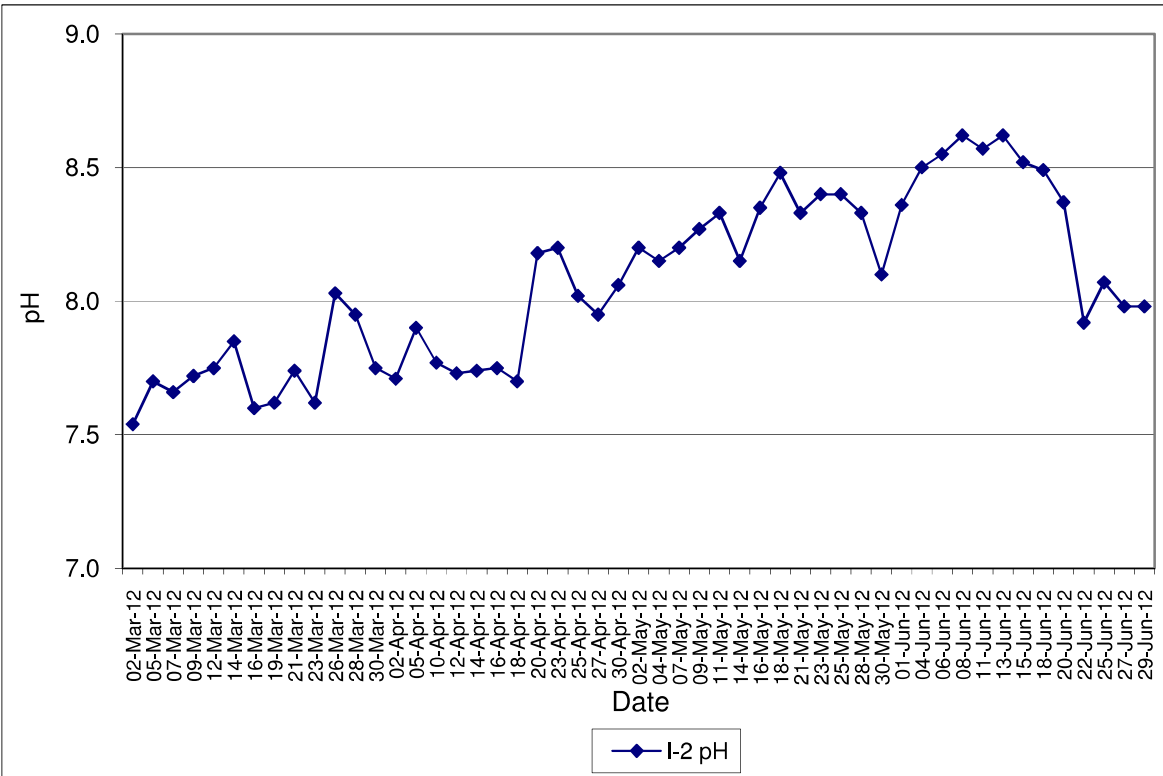
**Contract No. DC/2007/12 - Design and Construction of Tsuen Wan Drainage Tunnel  
 Water Quality Results at Sik Sik Yuen Ho Fung College (I-1)  
 Mar-12 to Jun-12**



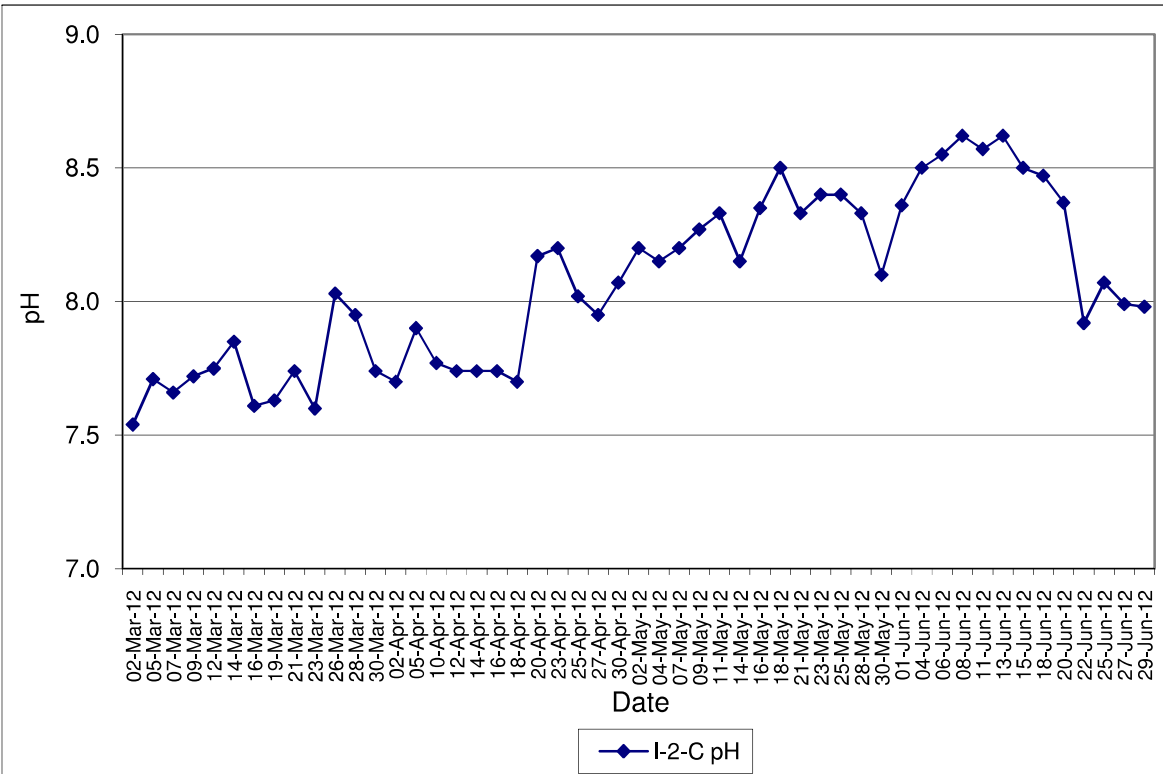
**Contract No. DC/2007/12 - Design and Construction of Tsuen Wan Drainage Tunnel  
 Water Quality Results at Sik Sik Yuen Ho Fung College (I-1-C)  
 Mar-12 to Jun-12**



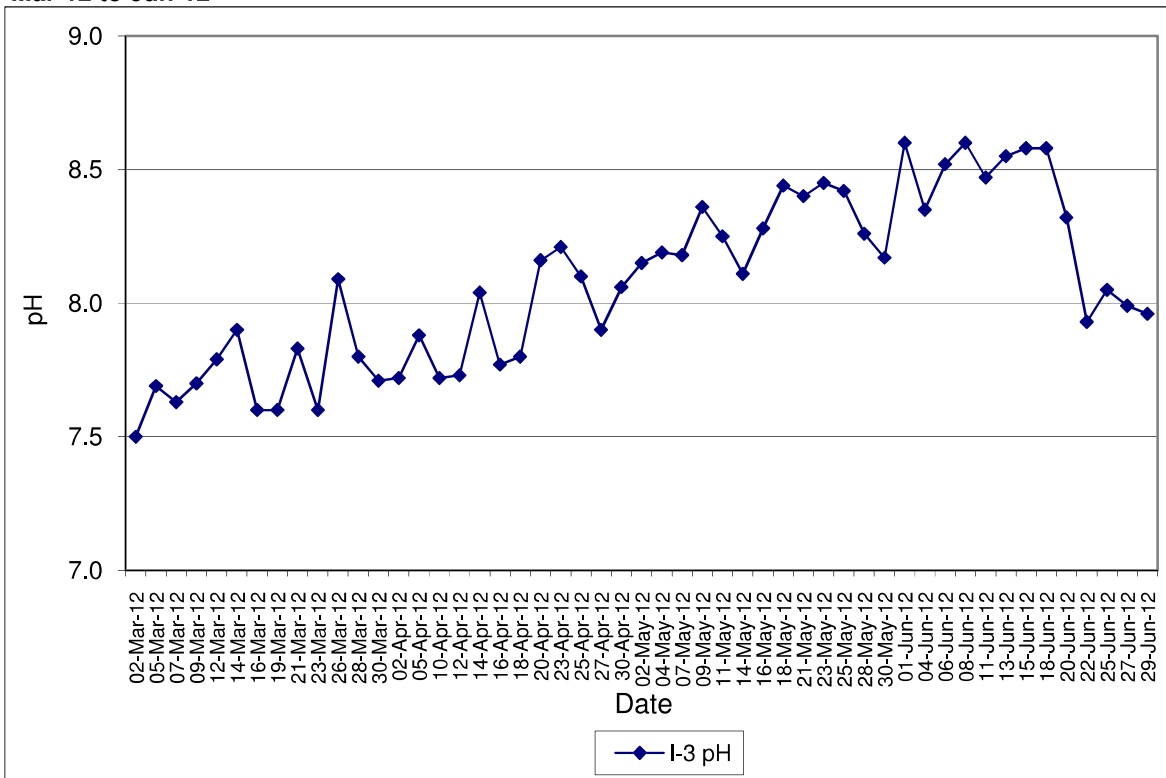
**Contract No. DC/2007/12 - Design and Construction of Tsuen Wan Drainage Tunnel  
 Water Quality Results at Hong Hoi Chee Hong Temple (I-2)  
 Mar-12 to Jun-12**



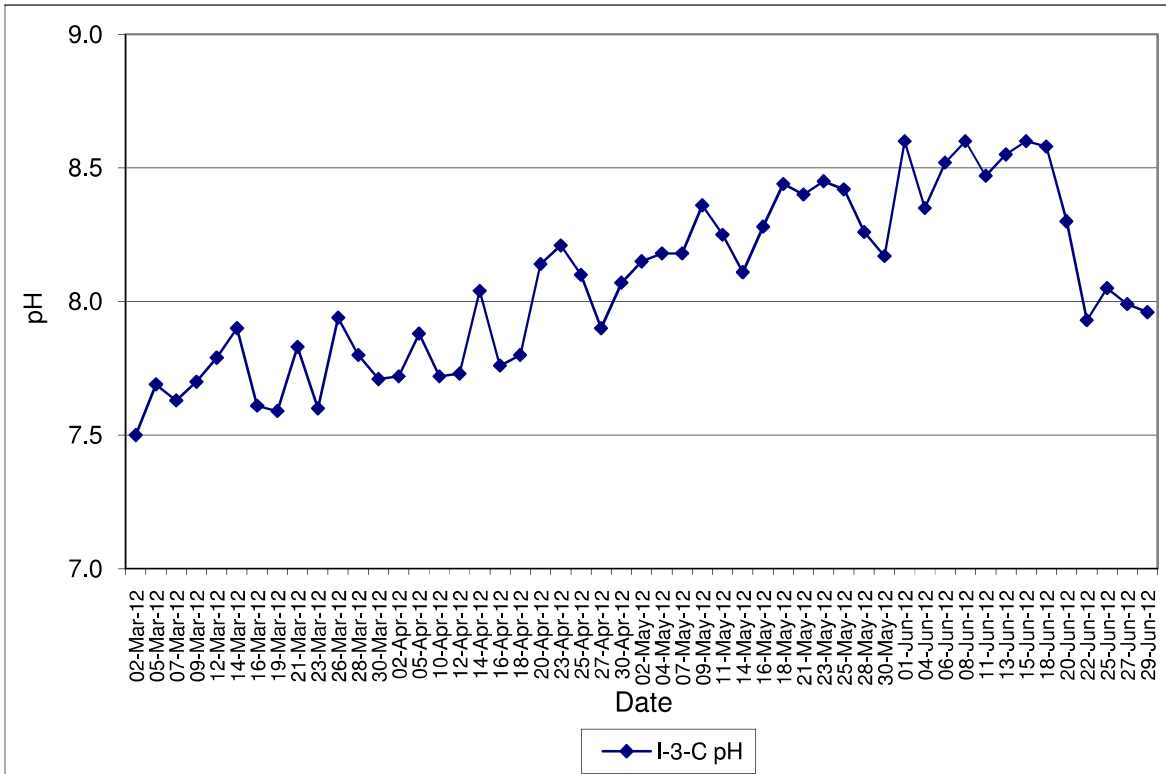
**Contract No. DC/2007/12 - Design and Construction of Tsuen Wan Drainage Tunnel  
 Water Quality Results at Hong Hoi Chee Hong Temple (I-2-C)  
 Mar-12 to Jun-12**



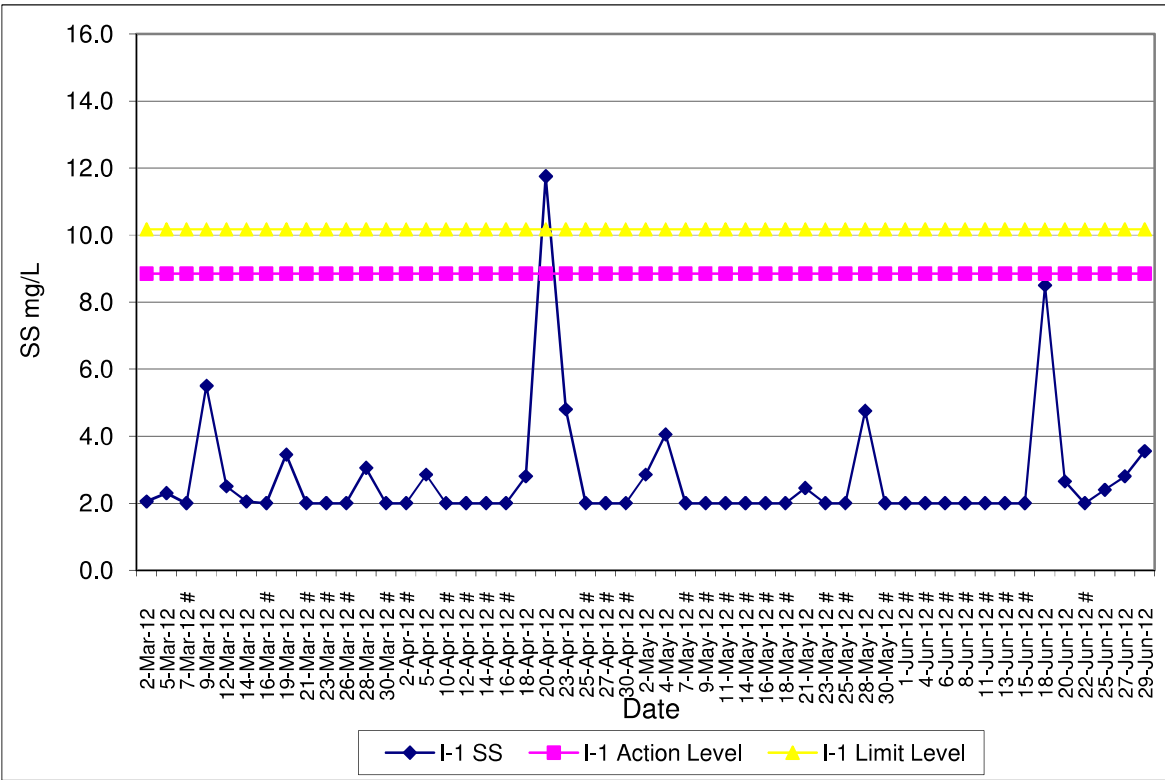
**Contract No. DC/2007/12 - Design and Construction of Tsuen Wan Drainage Tunnel  
Water Quality Results at Squatters (I-3)  
Mar-12 to Jun-12**



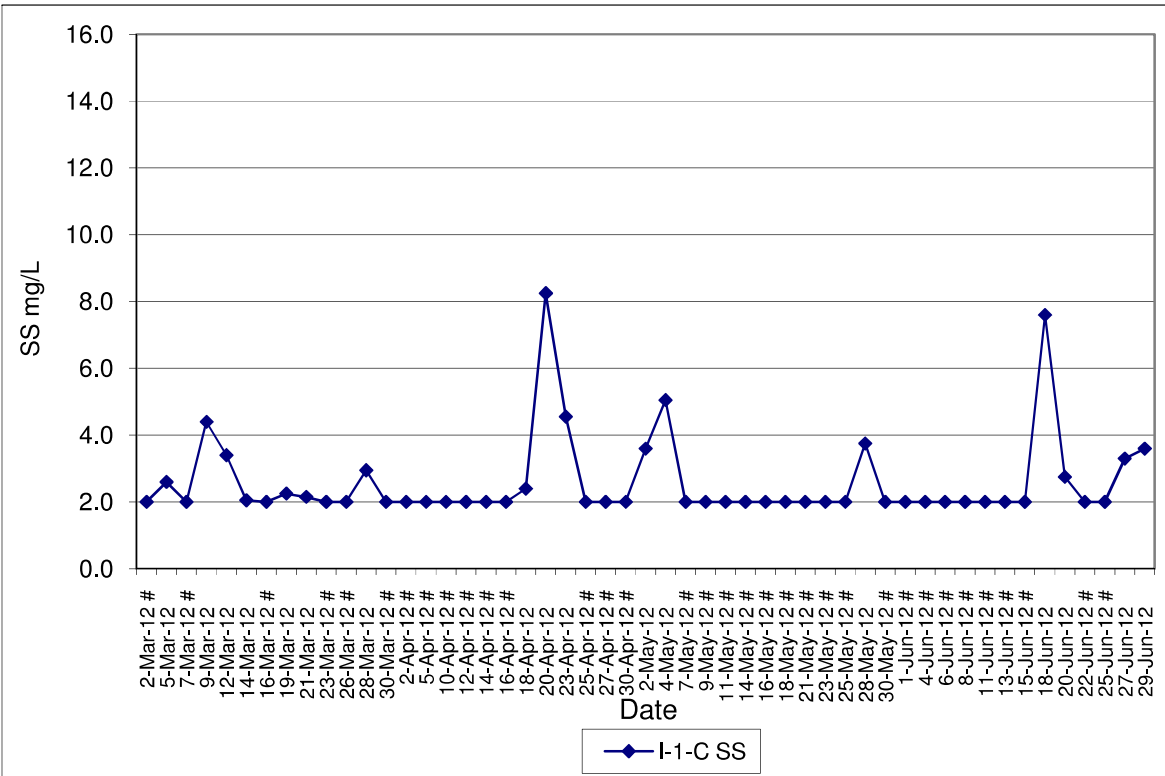
**Contract No. DC/2007/12 - Design and Construction of Tsuen Wan Drainage Tunnel  
Water Quality Results at Squatters (I-3-C)  
Mar-12 to Jun-12**



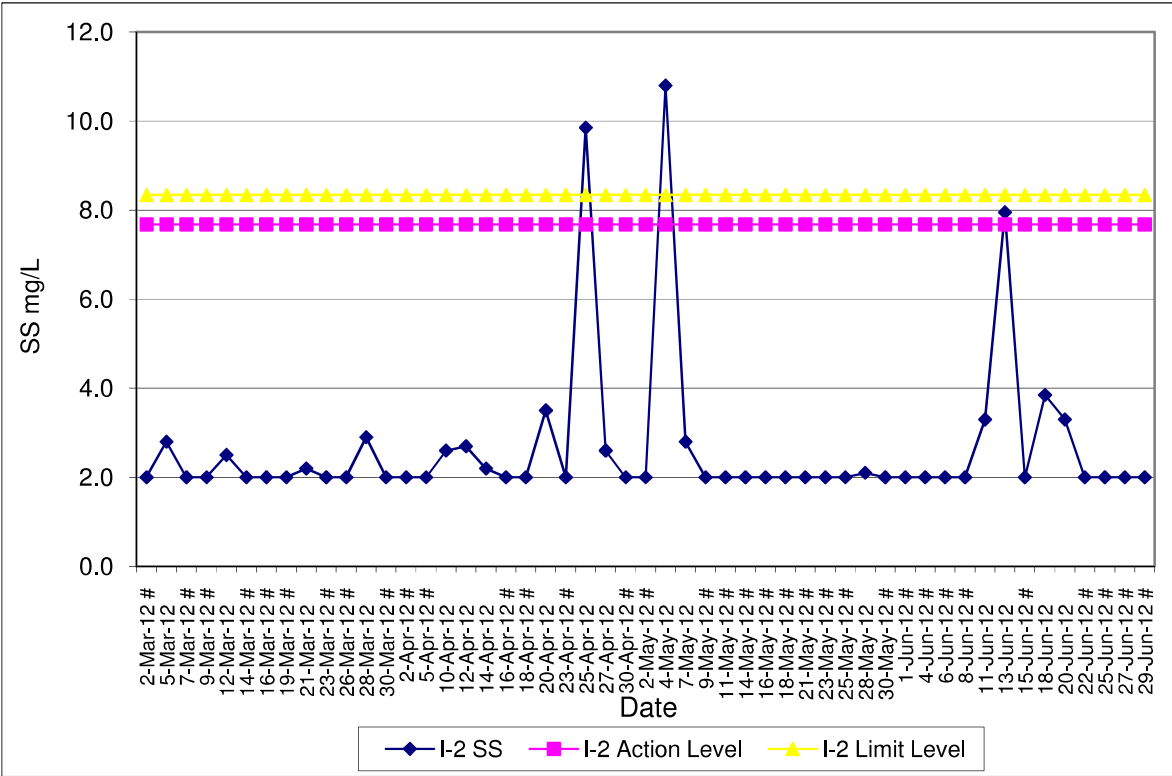
**Contract No. DC/2007/12 - Design and Construction of Tsuen Wan Drainage Tunnel  
 Water Quality Results at Sik Sik Yuen Ho Fung College (I-1)  
 Mar-12 to Jun-12**



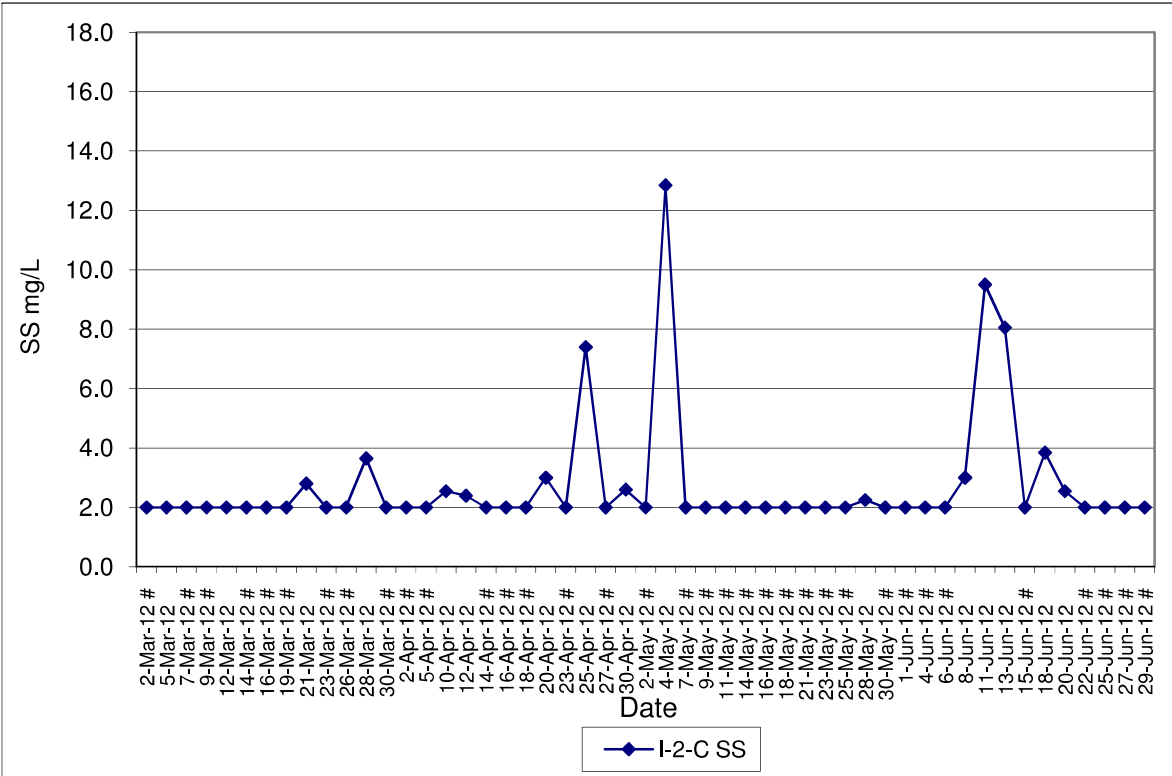
**Contract No. DC/2007/12 - Design and Construction of Tsuen Wan Drainage Tunnel  
 Water Quality Results at Sik Sik Yuen Ho Fung College (I-1-C)  
 Mar-12 to Jun-12**



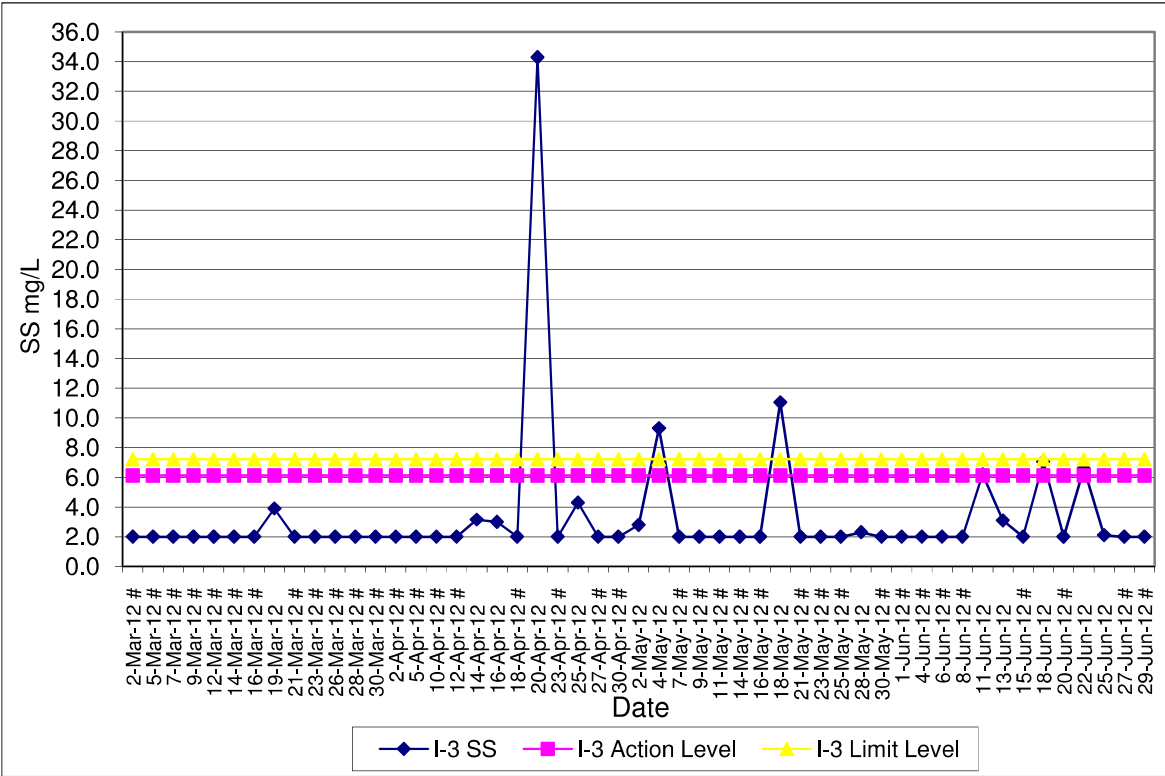
**Contract No. DC/2007/12 - Design and Construction of Tsuen Wan Drainage Tunnel  
 Water Quality Results at Hong Hoi Chee Hong Temple (I-2)  
 Mar-12 to Jun-12**



**Contract No. DC/2007/12 - Design and Construction of Tsuen Wan Drainage Tunnel  
 Water Quality Results at Hong Hoi Chee Hong Temple (I-2-C)  
 Mar-12 to Jun-12**



**Contract No. DC/2007/12 - Design and Construction of Tsuen Wan Drainage Tunnel  
Water Quality Results at Squatters (I-3)  
Mar-12 to Jun-12**



**Contract No. DC/2007/12 - Design and Construction of Tsuen Wan Drainage Tunnel  
Water Quality Results at Squatters (I-3-C)  
Mar-12 to Jun-12**

