


Interim Notification of Environmental Quality Limit Exceedance

Incident Report on Limit Level Non-compliance

Project	Tsuen Wan Drainage Tunnel
Date	01-Jun-11
Time	11:40 AM
Monitoring Location	O-1(ET)
Parameter	Dissolved Oxygen (marine mid-depth)
Action & Limit Levels (mg/L)	7.02 / 6.94
Measured Level (mg/L)	6.93
Control Station	O-1-C(ET)
Measured Level at the Control Station (mg/L)	7.00
Possible reason for Action or Limit Level Non-compliance	The measured DO level (marine mid-depth) of the monitoring station was slightly below the baseline limit level and the DO level at the corresponding control station. Relocation of C&D material to derrick barge was undertaken during monitoring and there was no other marine works conducted. Since the difference between the control station and impact monitoring was only 1%, the exceedance was considered contributed by natural variation and non-project related. Therefore, no further action was required.
Actions taken / to be taken	(1) Silt curtain was provided along the Portion E boundary line and extended from seawater level to the bottom of seabed; (2) floating type silt curtain was employed at the inner side; (3) sufficient slack of silt curtain was allowed to cope with the wave and tidal action to ensure the curtains (outer and inner) were rested on seabed; (4) condition of silt curtains was checked by the supervisor daily; and (5) seawall blocks installation was undertaken within the inner silt curtain area only.
Remarks	None

Prepared by: F. C. Tsang
 Designation: Environmental Team Leader
 Signature: 
 Date: 02-Jun-11

Photographic record for exceedance of Dissolved Oxygen (marine mid-depth) recorded at O-1(ET) on 01-Jun-11



Site photo



Site photo

Interim Notification of Environmental Quality Limit Exceedance

Incident Report on Action Level Non-compliance

Project	Tsuen Wan Drainage Tunnel
Date	03-Jun-11
Time	1:33 PM
Monitoring Location	O-1(ET)
Parameter	Dissolved Oxygen (marine surface)
Action & Limit Levels (mg/L)	7.02 / 6.94
Measured Level (mg/L)	6.97
Control Station	O-1-C(ET)
Measured Level at the Control Station (mg/L)	7.20
Possible reason for Action or Limit Level Non-compliance	The measured DO level (marine surface) of the monitoring station was slightly below the baseline action level and was lower than the DO level at the corresponding control station. Making good of outer silt curtain and relocation of disposal materials from derrick barge (TB203) to another derrick barge (Kong Lung) was undertaken during monitoring. There was no other marine works conducted. No direct disturbance from the site was observed during monitoring. Therefore, the exceedance was considered to be contributed by natural variation and no further action was required.
Actions taken / to be taken	(1) Silt curtain was provided along the Portion E boundary line and extended from seawater level to the bottom of seabed; (2) floating type silt curtain was employed at the inner side; (3) sufficient slack of silt curtain was allowed to cope with the wave and tidal action to ensure the curtains (outer and inner) were rested on seabed; (4) condition of silt curtains was checked by the supervisor daily; and (5) seawall blocks installation was undertaken within the inner silt curtain area only.
Remarks	None

Prepared by: F. C. Tsang
 Designation: Environmental Team Leader

Signature: 

Date: 07-Jun-11

Photographic record for exceedance of Dissolved Oxygen (marine surface) recorded at O-1(ET) on 03-Jun-11



Site photo



Site photo
(Photo taken at location near the site)

Interim Notification of Environmental Quality Limit Exceedance

Incident Report on Action Level Non-compliance

Project	Tsuen Wan Drainage Tunnel
Date	03-Jun-11
Time	1:33 PM
Monitoring Location	O-1(ET)
Parameter	Dissolved Oxygen (marine mid-depth)
Action & Limit Levels (mg/L)	7.02 / 6.94
Measured Level (mg/L)	6.98
Control Station	O-1-C(ET)
Measured Level at the Control Station (mg/L)	6.92
Possible reason for Action or Limit Level Non-compliance	The measured DO level (marine mid-depth) of the monitoring station was slightly below the baseline action level but higher than the DO level at the corresponding control station. Making good of outer silt curtain and relocation of disposal materials from derrick barge (TB203) to another derrick barge (Kong Lung) was undertaken during monitoring. There was no other marine works conducted. No direct disturbance from the site was observed during monitoring. Therefore, the exceedance was considered to be contributed by natural variation and no further action was required.
Actions taken / to be taken	(1) Silt curtain was provided along the Portion E boundary line and extended from seawater level to the bottom of seabed; (2) floating type silt curtain was employed at the inner side; (3) sufficient slack of silt curtain was allowed to cope with the wave and tidal action to ensure the curtains (outer and inner) were rested on seabed; (4) condition of silt curtains was checked by the supervisor daily; and (5) seawall blocks installation was undertaken within the inner silt curtain area only.
Remarks	None

Prepared by: F. C. Tsang
 Designation: Environmental Team Leader

Signature: 

Date: 07-Jun-11

Photographic record for exceedance of Dissolved Oxygen (marine mid-depth) recorded at O-1(ET) on 03-Jun-11



Site photo



Site photo
(Photo taken at location near the site)

Interim Notification of Environmental Quality Limit Exceedance

Incident Report on Limit Level Non-compliance

Project	Tsuen Wan Drainage Tunnel
Date	07-Jun-11
Time	9:40 AM
Monitoring Location	O-1(FT)
Parameter	Dissolved Oxygen (marine bottom)
Action & Limit Levels (mg/L)	6.99 / 6.96
Measured Level (mg/L)	6.94
Control Station	O-1-C(FT)
Measured Level at the Control Station (mg/L)	7.08
Possible reason for Action or Limit Level Non-compliance	The measured DO level (marine bottom) at the monitoring station was slightly below the baseline limit level and was below the DO level of the corresponding control station (about 2.0%). Only loading seawall blocks onto derrick barge was undertaken at the Outfall basin (Portion E) during monitoring. No other marine works was conducted. No direct disturbance from the site was observed during monitoring. Therefore, the exceedance was considered to be contributed by natural variation and no further action was required.
Actions taken / to be taken	(1) Silt curtain was provided along the Portion E boundary line and extended from seawater level to the bottom of seabed; (2) floating type silt curtain was employed at the inner side; (3) sufficient slack of silt curtain was allowed to cope with the wave and tidal action to ensure the curtains (outer and inner) were rested on seabed; (4) condition of silt curtains was checked by the supervisor daily; and (5) seawall blocks installation was undertaken within the inner silt curtain area only.
Remarks	None

Prepared by: F. C. Tsang

Designation: Environmental Team Leader

Signature:



Date: 13-Jun-11

Photographic record for exceedance of Dissolved Oxygen (marine bottom) recorded at O-1(FT) on 07-Jun-11




Site photo

Interim Notification of Environmental Quality Limit Exceedance

Incident Report on Action Level Non-compliance

Project	Tsuen Wan Drainage Tunnel
Date	07-Jun-11
Time	2:33 PM
Monitoring Location	O-1(ET)
Parameter	Dissolved Oxygen (marine surface)
Action & Limit Levels (mg/L)	7.02 / 6.94
Measured Level (mg/L)	6.98
Control Station	O-1-C(ET)
Measured Level at the Control Station (mg/L)	7.02
Possible reason for Action or Limit Level Non-compliance	The measured DO level (marine surface) of the monitoring station was slightly below the baseline action level and DO level at the corresponding control station. Only loading seawall blocks onto derrick barge was undertaken at the Outfall basin (Portion E) on the monitoring day. No other marine works was conducted. No direct disturbance from the site was observed during monitoring. Therefore, the exceedance was considered to be contributed by natural variation and no further action was required.
Actions taken / to be taken	(1) Silt curtain was provided along the Portion E boundary line and extended from seawater level to the bottom of seabed; (2) floating type silt curtain was employed at the inner side; (3) sufficient slack of silt curtain was allowed to cope with the wave and tidal action to ensure the curtains (outer and inner) were rested on seabed; (4) condition of silt curtains was checked by the supervisor daily; and (5) seawall blocks installation was undertaken within the inner silt curtain area only.
Remarks	None

Prepared by: F. C. Tsang
 Designation: Environmental Team Leader
 Signature: 
 Date: 13-Jun-11

Photographic record for exceedance of Dissolved Oxygen (marine surface) recorded at O-1(ET) on 07-Jun-11



Site photo




Site photo

Interim Notification of Environmental Quality Limit Exceedance

Incident Report on Action Level Non-compliance

Project	Tsuen Wan Drainage Tunnel
Date	07-Jun-11
Time	2:33 PM
Monitoring Location	O-1(ET)
Parameter	Dissolved Oxygen (marine mid-depth)
Action & Limit Levels (mg/L)	7.02 / 6.94
Measured Level (mg/L)	6.94
Control Station	O-1-C(ET)
Measured Level at the Control Station (mg/L)	7.11
Possible reason for Action or Limit Level Non-compliance	The measured DO level (marine mid-depth) of the monitoring station was below the baseline action level and DO level at the corresponding control station. Only loading seawall blocks onto derrick barge was undertaken at the Outfall basin (Portion E) on the monitoring day. No other marine works was conducted. No direct disturbance from the site was observed during monitoring. Therefore, the exceedance was considered to be contributed by natural variation and no further action was required.
Actions taken / to be taken	(1) Silt curtain was provided along the Portion E boundary line and extended from seawater level to the bottom of seabed; (2) floating type silt curtain was employed at the inner side; (3) sufficient slack of silt curtain was allowed to cope with the wave and tidal action to ensure the curtains (outer and inner) were rested on seabed; (4) condition of silt curtains was checked by the supervisor daily; and (5) seawall blocks installation was undertaken within the inner silt curtain area only.
Remarks	None

Prepared by: F. C. Tsang
 Designation: Environmental Team Leader
 Signature: 
 Date: 13-Jun-11

Photographic record for exceedance of Dissolved Oxygen (marine mid-depth) recorded at O-1(ET) on 07-Jun-11



Site photo



Site photo

Interim Notification of Environmental Quality Limit Exceedance

Incident Report on Limit Level Non-compliance

Project	Tsuen Wan Drainage Tunnel
Date	09-Jun-11
Time	4:30 PM
Monitoring Location	O-1(ET)
Parameter	Dissolved Oxygen (marine surface)
Action & Limit Levels (mg/L)	7.02 / 6.94
Measured Level (mg/L)	6.89
Control Station	O-1-C(ET)
Measured Level at the Control Station (mg/L)	7.00
Possible reason for Action or Limit Level Non-compliance	The measured DO level (marine surface) of the monitoring station was slightly below the baseline action level and was lower than DO level at the corresponding control station (about 1.5%). Only relocation of type II armour and making good of silt curtain were undertaken at the Outfall basin (Portion E) during monitoring. No other marine works was conducted. No direct disturbance from the site was observed during monitoring. Therefore, the exceedance was considered to be contributed by natural variation and no further action was required.
Actions taken / to be taken	(1) Silt curtain was provided along the Portion E boundary line and extended from seawater level to the bottom of seabed; (2) floating type silt curtain was employed at the inner side; (3) sufficient slack of silt curtain was allowed to cope with the wave and tidal action to ensure the curtains (outer and inner) were rested on seabed; (4) condition of silt curtains was checked by the supervisor daily; and (5) seawall blocks installation was undertaken within the inner silt curtain area only.
Remarks	None

Prepared by: F. C. Tsang
 Designation: Environmental Team Leader

Signature: 

Date: 13-Jun-11

Photographic record for exceedance of Dissolved Oxygen (marine surface) recorded at O-1(ET) on 09-Jun-11



Site photo



Site photo
(Photo taken at location near the site)

Interim Notification of Environmental Quality Limit Exceedance

Incident Report on Limit Level Non-compliance

Project	Tsuen Wan Drainage Tunnel
Date	11-Jun-11
Time	1:22 PM
Monitoring Location	O-1(FT)
Parameter	Dissolved Oxygen (marine bottom)
Action & Limit Levels (mg/L)	6.99 / 6.96
Measured Level (mg/L)	6.83
Control Station	O-1-C(FT)
Measured Level at the Control Station (mg/L)	6.90
Possible reason for Action or Limit Level Non-compliance	The measured DO level (marine bottom) at the monitoring station was below the baseline limit level and slightly lower than DO level of the corresponding control station (about 1.0%). Only outer silt curtain maintenance and repairing was undertaken at the Outfall basin (Portion E) on the monitoring day. No other marine works was conducted. No direct disturbance from the site was observed during monitoring. Therefore, the exceedance was considered to be contributed by natural variation and no further action was required.
Actions taken / to be taken	(1) Silt curtain was provided along the Portion E boundary line and extended from seawater level to the bottom of seabed; (2) floating type silt curtain was employed at the inner side; (3) sufficient slack of silt curtain was allowed to cope with the wave and tidal action to ensure the curtains (outer and inner) were rested on seabed; (4) condition of silt curtains was checked by the supervisor daily; and (5) seawall blocks installation was undertaken within the inner silt curtain area only.
Remarks	None

Prepared by: F. C. Tsang

Designation: Environmental Team Leader

Signature:



Date: 14-Jun-11

Photographic record for exceedance of Dissolved Oxygen (marine bottom) recorded at O-1(FT) on 11-Jun-11




Site photo
(Photo taken at location
near the site)

Interim Notification of Environmental Quality Limit Exceedance

Incident Report on Limit Level Non-compliance

Project	Tsuen Wan Drainage Tunnel
Date	11-Jun-11
Time	9:33 AM
Monitoring Location	O-1(ET)
Parameter	Dissolved Oxygen (marine surface)
Action & Limit Levels (mg/L)	7.02 / 6.94
Measured Level (mg/L)	6.76
Control Station	O-1-C(ET)
Measured Level at the Control Station (mg/L)	6.82
Possible reason for Action or Limit Level Non-compliance	The measured DO level (marine surface) of the monitoring station was below the baseline limit level and slightly lower than DO level at the corresponding control station (less than 1%). Only outer silt curtain maintenance and repairing was undertaken at the Outfall basin (Portion E) on the monitoring day. No other marine works was conducted. No direct disturbance from the site was observed during monitoring. Therefore, the exceedance was considered to be contributed by natural variation and no further action was required.
Actions taken / to be taken	(1) Silt curtain was provided along the Portion E boundary line and extended from seawater level to the bottom of seabed; (2) floating type silt curtain was employed at the inner side; (3) sufficient slack of silt curtain was allowed to cope with the wave and tidal action to ensure the curtains (outer and inner) were rested on seabed; (4) condition of silt curtains was checked by the supervisor daily; and (5) seawall blocks installation was undertaken within the inner silt curtain area only.
Remarks	None

Prepared by: F. C. Tsang
 Designation: Environmental Team Leader
 Signature: 
 Date: 14-Jun-11

Photographic record for exceedance of Dissolved Oxygen (marine surface) recorded at O-1(ET) on 11-Jun-11



Site photo
(Photo taken at location
near O-1(ET))




Site photo
(Photo taken at location
near O-1-C(ET))

Interim Notification of Environmental Quality Limit Exceedance

Incident Report on Limit Level Non-compliance

Project	Tsuen Wan Drainage Tunnel
Date	11-Jun-11
Time	9:33 AM
Monitoring Location	O-1(ET)
Parameter	Dissolved Oxygen (marine mid-depth)
Action & Limit Levels (mg/L)	7.02 / 6.94
Measured Level (mg/L)	6.89
Control Station	O-1-C(ET)
Measured Level at the Control Station (mg/L)	6.92
Possible reason for Action or Limit Level Non-compliance	The measured DO level (marine mid-depth) of the monitoring station was below the baseline limit level and slightly lower than DO level at the corresponding control station (less than 0.5%). Only outer silt curtain maintenance and repairing was undertaken at the Outfall basin (Portion E) on the monitoring day. No other marine works was conducted. No direct disturbance from the site was observed during monitoring. Therefore, the exceedance was considered to be contributed by natural variation and no further action was required.
Actions taken / to be taken	(1) Silt curtain was provided along the Portion E boundary line and extended from seawater level to the bottom of seabed; (2) floating type silt curtain was employed at the inner side; (3) sufficient slack of silt curtain was allowed to cope with the wave and tidal action to ensure the curtains (outer and inner) were rested on seabed; (4) condition of silt curtains was checked by the supervisor daily; and (5) seawall blocks installation was undertaken within the inner silt curtain area only.
Remarks	None

Prepared by: F. C. Tsang
 Designation: Environmental Team Leader
 Signature: 
 Date: 14-Jun-11

Photographic record for exceedance of Dissolved Oxygen (marine mid-depth) recorded at O-1(ET) on 11-Jun-11



Site photo
(Photo taken at location
near O-1(ET))



Site photo
(Photo taken at location
near O-1-C(ET))

Interim Notification of Environmental Quality Limit Exceedance

Incident Report on Limit Level Non-compliance

Project	Tsuen Wan Drainage Tunnel
Date	13-Jun-11
Time	3:28 PM
Monitoring Location	O-1(FT)
Parameter	Dissolved Oxygen (marine bottom)
Action & Limit Levels (mg/L)	6.99 / 6.96
Measured Level (mg/L)	6.89
Control Station	O-1-C(FT)
Measured Level at the Control Station (mg/L)	6.89
Possible reason for Action or Limit Level Non-compliance	The measured DO level (marine bottom) at the monitoring station was below the baseline limit level but same as DO level of the corresponding control station. Only outer silt curtain maintenance and repairing was undertaken at the Outfall basin (Portion E) on the monitoring day. No other marine works was conducted. No direct disturbance from the site was observed during monitoring. Therefore, the exceedance was considered to be contributed by natural variation and no further action was required.
Actions taken / to be taken	(1) Silt curtain was provided along the Portion E boundary line and extended from seawater level to the bottom of seabed; (2) floating type silt curtain was employed at the inner side; (3) sufficient slack of silt curtain was allowed to cope with the wave and tidal action to ensure the curtains (outer and inner) were rested on seabed; (4) condition of silt curtains was checked by the supervisor daily; and (5) seawall blocks installation was undertaken within the inner silt curtain area only.
Remarks	None

Prepared by: F. C. Tsang

Designation: Environmental Team Leader

Signature:



Date: 14-Jun-11

Photographic record for exceedance of Dissolved Oxygen (marine bottom) recorded at O-1(FT) on 13-Jun-11




Site photo
(Photo taken at location
near the site)

Interim Notifications of Environmental Quality Limits Exceedances

Incident Report on Action Level Non-compliance

Project	Tsuen Wan Drainage Tunnel
Date	9-Jun-11
Time	3:10 PM
Monitoring Location	Sik Sik Yuen Ho Fung College (I-1)
Parameter	Suspended Solid
Action & Limit Levels (mg/L)	8.85 / 10.17
Measured Level (mg/L)	2.50
Control Station	I-1-C
Measured Level at the Control Station (mg/L)	2.00
Possible reason for Action or Limit Level Non-compliance	The measured SS level was lower than the baseline action/limit level, but slightly higher than 120% of SS level of the control station (I-1-C). General site cleaning, removing working platform next to Bay 5, formwork at cascade Bay 7, trimming shotcrete and cutting wiremesh, installation of bracket on spiral ramp for construction of Shing Mun Road platform and geotechnical instrumentation monitoring were undertaken during measurement. No direct disturbance was observed from the site. The exceedance was considered to be contributed by low SS level at the control station. Since the exceedance was non-projected related, no further action was required.
Actions taken / to be taken	The following mitigation measures were provided on-site during monitoring: (1) waste water was collected to waste water treatment plant and treated before discharge; and (2) Nullah and site area were separated by sealed concrete block.
Remarks	None

Prepared by: Fan Cheong Tsang
 Designation: Environmental Team Leader
 Signature: 
 Date: 17-Jun-11

Photographic record for exceedance of Suspended Solid recorded at Sik Sik Yuen Ho Fung College (I-1) on 09-Jun-11



Site photo



Photo taken at I-1



Photo taken at I-1-C

Interim Notification of Environmental Quality Limit Exceedance

Incident Report on Limit Level Non-compliance

Project	Tsuen Wan Drainage Tunnel
Date	15-Jun-11
Time	5:30 PM
Monitoring Location	O-1(FT)
Parameter	Dissolved Oxygen (marine surface)
Action & Limit Levels (mg/L)	6.84 / 6.81
Measured Level (mg/L)	6.70
Control Station	O-1-C(FT)
Measured Level at the Control Station (mg/L)	6.75
Possible reason for Action or Limit Level Non-compliance	The measured DO level (marine surface) at the monitoring station was below the baseline limit level and slightly lower than DO level of the corresponding control station (about 0.7%). Only regular maintenance of outer silt curtain was undertaken at the Outfall basin (Portion E) on the monitoring day. No other marine works was conducted. No direct disturbance from the site was observed during monitoring. Therefore, the exceedance was considered to be contributed by natural variation and no further action was required.
Actions taken / to be taken	(1) Silt curtain was provided along the Portion E boundary line and extended from seawater level to the bottom of seabed; (2) floating type silt curtain was employed at the inner side; (3) sufficient slack of silt curtain was allowed to cope with the wave and tidal action to ensure the curtains (outer and inner) were rested on seabed; (4) condition of silt curtains was checked by the supervisor daily; and (5) seawall blocks installation was undertaken within the inner silt curtain area only.
Remarks	None

Prepared by: F. C. Tsang

Designation: Environmental Team Leader

Signature:



Date: 17-Jun-11

**Photographic record for exceedance of Dissolved Oxygen (marine surface) recorded at O-1(FT)
on 15-Jun-11**



Site photo
(Photo taken at location
near O-1-C(FT))

Interim Notification of Environmental Quality Limit Exceedance

Incident Report on Limit Level Non-compliance

Project	Tsuen Wan Drainage Tunnel
Date	15-Jun-11
Time	5:30 PM
Monitoring Location	O-1(FT)
Parameter	Dissolved Oxygen (marine bottom)
Action & Limit Levels (mg/L)	6.99 / 6.96
Measured Level (mg/L)	6.88
Control Station	O-1-C(FT)
Measured Level at the Control Station (mg/L)	6.91
Possible reason for Action or Limit Level Non-compliance	The measured DO level (marine bottom) at the monitoring station was below the baseline limit level and slightly lower than DO level of the corresponding control station (about 0.4%). Only regular maintenance of outer silt curtain was undertaken at the Outfall basin (Portion E) on the monitoring day. No other marine works was conducted. No direct disturbance from the site was observed during monitoring. Therefore, the exceedance was considered to be contributed by natural variation and no further action was required.
Actions taken / to be taken	(1) Silt curtain was provided along the Portion E boundary line and extended from seawater level to the bottom of seabed; (2) floating type silt curtain was employed at the inner side; (3) sufficient slack of silt curtain was allowed to cope with the wave and tidal action to ensure the curtains (outer and inner) were rested on seabed; (4) condition of silt curtains was checked by the supervisor daily; and (5) seawall blocks installation was undertaken within the inner silt curtain area only.
Remarks	None

Prepared by: F. C. Tsang

Designation: Environmental Team Leader

Signature:



Date: 14-Jun-11

Photographic record for exceedance of Dissolved Oxygen (marine bottom) recorded at O-1(FT) on 15-Jun-11




Site photo
(Photo taken at location
near O-1-C(FT))

Interim Notification of Environmental Quality Limit Exceedance

Incident Report on Limit Level Non-compliance

Project	Tsuen Wan Drainage Tunnel
Date	15-Jun-11
Time	11:22 AM
Monitoring Location	O-1(ET)
Parameter	Dissolved Oxygen (marine surface)
Action & Limit Levels (mg/L)	7.02 / 6.94
Measured Level (mg/L)	6.76
Control Station	O-1-C(ET)
Measured Level at the Control Station (mg/L)	6.83
Possible reason for Action or Limit Level Non-compliance	The measured DO level (marine surface) at the monitoring station was below the baseline limit level and slightly lower than DO level of the corresponding control station (about 1%). Only regular maintenance of outer silt curtain was undertaken at the Outfall basin (Portion E) on the monitoring day. No other marine works was conducted. No direct disturbance from the site was observed during monitoring. Therefore, the exceedance was considered to be contributed by natural variation and no further action was required.
Actions taken / to be taken	(1) Silt curtain was provided along the Portion E boundary line and extended from seawater level to the bottom of seabed; (2) floating type silt curtain was employed at the inner side; (3) sufficient slack of silt curtain was allowed to cope with the wave and tidal action to ensure the curtains (outer and inner) were rested on seabed; (4) condition of silt curtains was checked by the supervisor daily; and (5) seawall blocks installation was undertaken within the inner silt curtain area only.
Remarks	None

Prepared by: F. C. Tsang
 Designation: Environmental Team Leader
 Signature: 
 Date: 17-Jun-11

Photographic record for exceedance of Dissolved Oxygen (marine surface) recorded at O-1(ET) on 15-Jun-11



Site photo
(Photo taken at location
near the site)

Interim Notification of Environmental Quality Limit Exceedance

Incident Report on Limit Level Non-compliance

Project	Tsuen Wan Drainage Tunnel
Date	15-Jun-11
Time	11:22 AM
Monitoring Location	O-1(ET)
Parameter	Dissolved Oxygen (marine mid-depth)
Action & Limit Levels (mg/L)	7.02 / 6.94
Measured Level (mg/L)	6.69
Control Station	O-1-C(ET)
Measured Level at the Control Station (mg/L)	6.77
Possible reason for Action or Limit Level Non-compliance	The measured DO level (marine mid-depth) at the monitoring station was below the baseline limit level and slightly lower than DO level of the corresponding control station (about 1.2%). Only regular maintenance of outer silt curtain was undertaken at the Outfall basin (Portion E) on the monitoring day. No other marine works was conducted. No direct disturbance from the site was observed during monitoring. Therefore, the exceedance was considered to be contributed by natural variation and no further action was required.
Actions taken / to be taken	(1) Silt curtain was provided along the Portion E boundary line and extended from seawater level to the bottom of seabed; (2) floating type silt curtain was employed at the inner side; (3) sufficient slack of silt curtain was allowed to cope with the wave and tidal action to ensure the curtains (outer and inner) were rested on seabed; (4) condition of silt curtains was checked by the supervisor daily; and (5) seawall blocks installation was undertaken within the inner silt curtain area only.
Remarks	None

Prepared by: F. C. Tsang
 Designation: Environmental Team Leader

Signature:



Date: 17-Jun-11

Photographic record for exceedance of Dissolved Oxygen (marine mid-depth) recorded at O-1(ET) on 15-Jun-11




Site photo
(Photo taken at location
near the site)

Interim Notifications of Environmental Quality Limits Exceedances

Incident Report on Limit Level Non-compliance

Project	Tsuen Wan Drainage Tunnel
Date	17-Jun-11
Time	11:50 AM
Monitoring Location	Sik Sik Yuen Ho Fung College (I-1)
Parameter	Turbidity
Action & Limit Levels (NTU)	9.75 / 12.47
Measured Level (NTU)	14.79
Control Station	I-1-C
Measured Level at the Control Station (NTU)	14.86
Possible reason for Action or Limit Level Non-compliance	The measured turbidity level was higher than the baseline limit level, but lower than the turbidity level of the control station (I-1-C). General site cleaning, dismantling formwork at Bay 5 and 6, filling tie bar hole in cascade, temporary traffic arrangement (TTA) at Shing Mun Road and geotechnical instrumentation monitoring were undertaken during measurement. No direct disturbance was observed from the site. The exceedance was considered to be contributed by high turbidity level at upstream location and heavy rainfall. Since the exceedance was non-project related, no further action was required.
Actions taken / to be taken	The following mitigation measures were provided on-site during monitoring: (1) waste water was collected and diverted to waste water treatment plant and treated before discharge; and (2) nullah and site area were separated by sealed concrete block.
Remarks	None

Prepared by: Fan Cheong Tsang
 Designation: Environmental Team Leader
 Signature: 
 Date: 22-Jun-11

Photographic record for exceedance of Turbidity recorded at Sik Sik Yuen Ho Fung College (I-1)
on 17-Jun-11



Site photo



Photo taken at I-1




Photo taken at I-1-C

Interim Notifications of Environmental Quality Limits Exceedances

Incident Report on Limit Level Non-compliance

Project	Tsuen Wan Drainage Tunnel
Date	17-Jun-11
Time	11:09 AM
Monitoring Location	Hong Hoi Chee Hong Temple (I-2)
Parameter	Turbidity
Action & Limit Levels (NTU)	6.63 / 6.99
Measured Level (NTU)	14.31
Control Station	I-2-C
Measured Level at the Control Station (NTU)	14.54
Possible reason for Action or Limit Level Non-compliance	The measured turbidity level was higher than the baseline limit level, but lower than the turbidity level of the control station (I-2-C). General site cleaning, housekeeping and temporary traffic arrangement (TTA), excavation (rock splitting and mucking) at vortex drop shaft, drilling, survey check and rock mapping at man access shaft, excavating the receiving pit at Portion G, and breaking footing of piling platform were undertaken during measurement. No direct disturbance was observed from the site. The exceedance was considered to be contributed by high turbidity level at upstream location and heavy rainfall. Since the exceedance was non-project related, no further action was required.
Actions taken / to be taken	The following mitigation measures were provided on-site during monitoring: (1) wastewater was collected and diverted to waste water treatment plant prior to discharge; (2) existing stream was diverted and bunded by sealed concrete block wall; and (3) existing stream was bunded off by sand bag to prevent any excavated material washing out from working area.
Remarks	None

Prepared by: Fan Cheong Tsang
 Designation: Environmental Team Leader
 Signature: 
 Date: 22-Jun-11

Photographic record for exceedance of Turbidity recorded at Hong Hoi Chee Hong Temple (I-2) on 17-Jun-11



Site photo

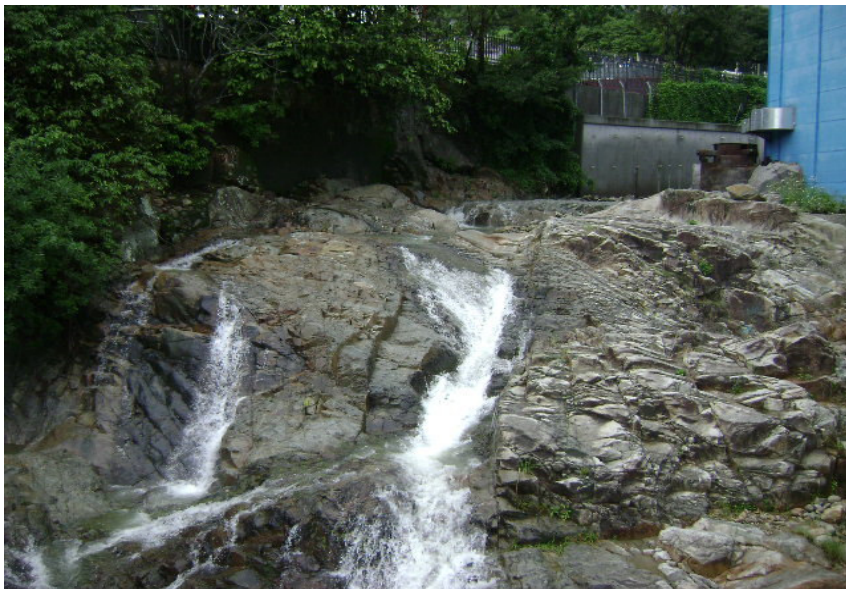


Photo taken at I-2




Photo taken at I-2-C

Interim Notifications of Environmental Quality Limits Exceedances

Incident Report on Limit Level Non-compliance

Project	Tsuen Wan Drainage Tunnel
Date	17-Jun-11
Time	10:12 AM
Monitoring Location	Squatters (I-3)
Parameter	Turbidity
Action & Limit Levels (NTU)	3.99 / 4.18
Measured Level (NTU)	25.75
Control Station	I-3-C
Measured Level at the Control Station (NTU)	26.05
Possible reason for Action or Limit Level Non-compliance	The measured turbidity level was higher than the baseline limit level, but lower than the turbidity level of the control station (I-3-C). General site cleaning and housekeeping, monitoring of de-formation monitoring point (DMP), drilling rock dowel and splitting holes in shaft, and slope cutting and backfilling at PB wall were undertaken during measurement. No direct disturbance was observed from the site. The exceedance was considered to be contributed by high turbidity level at upstream location and heavy rainfall. Since the exceedance was non-project related, no further action was required.
Actions taken / to be taken	The following mitigation measures were provided on-site during monitoring: (1) wastewater was collected and diverted to waste water treatment plant prior to discharge; (2) existing stream was diverted and bunded by sealed concrete block wall; and (3) excavated area was bunded and sealed by concrete block wall to prevent any excavated material runoff from working area.
Remarks	None

Prepared by: Fan Cheong Tsang
 Designation: Environmental Team Leader
 Signature: 
 Date: 22-Jun-11

Photographic record for exceedance of Turbidity recorded at Squatters (I-3) on 17-Jun-11



Photo taken at I-3



Photo taken at I-3-C

Interim Notification of Environmental Quality Limit Exceedance

Incident Report on Limit Level Non-compliance

Project	Tsuen Wan Drainage Tunnel
Date	17-Jun-11
Time	8:55 AM
Monitoring Location	O-1(FT)
Parameter	Dissolved Oxygen (marine surface)
Action & Limit Levels (mg/L)	6.84 / 6.81
Measured Level (mg/L)	6.45
Control Station	O-1-C(FT)
Measured Level at the Control Station (mg/L)	6.48
Possible reason for Action or Limit Level Non-compliance	The measured DO level (marine surface) at the monitoring station was below the baseline limit level and slightly lower than DO level of the corresponding control station (about 0.5%). Only loading the stockpile onto a derrick barge was undertaken at the Outfall basin (Portion E) on the monitoring day. No other marine works was conducted. No direct disturbance from the site was observed during monitoring. Therefore, the exceedance was considered to be contributed by natural variation and no further action was required.
Actions taken / to be taken	(1) Silt curtain was provided along the Portion E boundary line and extended from seawater level to the bottom of seabed; (2) floating type silt curtain was employed at the inner side; (3) sufficient slack of silt curtain was allowed to cope with the wave and tidal action to ensure the curtains (outer and inner) were rested on seabed; (4) condition of silt curtains was checked by the supervisor daily; and (5) seawall blocks installation was undertaken within the inner silt curtain area only.
Remarks	None

Prepared by: F. C. Tsang

Designation: Environmental Team Leader

Signature:



Date: 22-Jun-11

Photographic record for exceedance of Dissolved Oxygen (marine surface) recorded at O-1(FT) on 17-Jun-11



Site photo

Interim Notification of Environmental Quality Limit Exceedance

Incident Report on Limit Level Non-compliance

Project	Tsuen Wan Drainage Tunnel
Date	17-Jun-11
Time	8:55 AM
Monitoring Location	O-1(FT)
Parameter	Dissolved Oxygen (marine mid-depth)
Action & Limit Levels (mg/L)	6.84 / 6.81
Measured Level (mg/L)	6.50
Control Station	O-1-C(FT)
Measured Level at the Control Station (mg/L)	6.53
Possible reason for Action or Limit Level Non-compliance	The measured DO level (marine mid-depth) at the monitoring station was below the baseline limit level and slightly lower than DO level of the corresponding control station (about 0.5%). Only loading the stockpile onto a derrick barge was undertaken at the Outfall basin (Portion E) on the monitoring day. No other marine works was conducted. No direct disturbance from the site was observed during monitoring. Therefore, the exceedance was considered to be contributed by natural variation and no further action was required.
Actions taken / to be taken	(1) Silt curtain was provided along the Portion E boundary line and extended from seawater level to the bottom of seabed; (2) floating type silt curtain was employed at the inner side; (3) sufficient slack of silt curtain was allowed to cope with the wave and tidal action to ensure the curtains (outer and inner) were rested on seabed; (4) condition of silt curtains was checked by the supervisor daily; and (5) seawall blocks installation was undertaken within the inner silt curtain area only.
Remarks	None

Prepared by: F. C. Tsang

Designation: Environmental Team Leader

Signature:



Date: 22-Jun-11

Photographic record for exceedance of Dissolved Oxygen (marine mid-depth) recorded at O-1(FT) on 17-Jun-11



Site photo

Interim Notification of Environmental Quality Limit Exceedance

Incident Report on Limit Level Non-compliance

Project	Tsuen Wan Drainage Tunnel
Date	17-Jun-11
Time	8:55 AM
Monitoring Location	O-1(FT)
Parameter	Dissolved Oxygen (marine bottom)
Action & Limit Levels (mg/L)	6.99 / 6.96
Measured Level (mg/L)	6.60
Control Station	O-1-C(FT)
Measured Level at the Control Station (mg/L)	6.67
Possible reason for Action or Limit Level Non-compliance	The measured DO level (marine bottom) at the monitoring station was below the baseline limit level and slightly lower than DO level of the corresponding control station (about 1%). Only loading the stockpile onto a derrick barge was undertaken at the Outfall basin (Portion E) on the monitoring day. No other marine works was conducted. No direct disturbance from the site was observed during monitoring. Therefore, the exceedance was considered to be contributed by natural variation and no further action was required.
Actions taken / to be taken	(1) Silt curtain was provided along the Portion E boundary line and extended from seawater level to the bottom of seabed; (2) floating type silt curtain was employed at the inner side; (3) sufficient slack of silt curtain was allowed to cope with the wave and tidal action to ensure the curtains (outer and inner) were rested on seabed; (4) condition of silt curtains was checked by the supervisor daily; and (5) seawall blocks installation was undertaken within the inner silt curtain area only.
Remarks	None

Prepared by: F. C. Tsang

Designation: Environmental Team Leader

Signature:



Date: 22-Jun-11

Photographic record for exceedance of Dissolved Oxygen (marine bottom) recorded at O-1(FT) on 17-Jun-11



Site photo

Interim Notification of Environmental Quality Limit Exceedance

Incident Report on Limit Level Non-compliance

Project	Tsuen Wan Drainage Tunnel
Date	17-Jun-11
Time	1:32 PM
Monitoring Location	O-1(ET)
Parameter	Dissolved Oxygen (marine surface)
Action & Limit Levels (mg/L)	7.02 / 6.94
Measured Level (mg/L)	6.73
Control Station	O-1-C(ET)
Measured Level at the Control Station (mg/L)	6.61
Possible reason for Action or Limit Level Non-compliance	The measured DO level (marine surface) at the monitoring station was below the baseline limit level, but higher than DO level of the corresponding control station. Only loading the stockpile onto a derrick barge was undertaken at the Outfall basin (Portion E) on the monitoring day. No other marine works was conducted. No direct disturbance from the site was observed during monitoring. Therefore, the exceedance was considered to be contributed by natural variation and no further action was required.
Actions taken / to be taken	(1) Silt curtain was provided along the Portion E boundary line and extended from seawater level to the bottom of seabed; (2) floating type silt curtain was employed at the inner side; (3) sufficient slack of silt curtain was allowed to cope with the wave and tidal action to ensure the curtains (outer and inner) were rested on seabed; (4) condition of silt curtains was checked by the supervisor daily; and (5) seawall blocks installation was undertaken within the inner silt curtain area only.
Remarks	None

Prepared by: F. C. Tsang

Designation: Environmental Team Leader

Signature:



Date: 22-Jun-11

Photographic record for exceedance of Dissolved Oxygen (marine surface) recorded at O-1(ET) on 17-Jun-11



Site photo

Interim Notification of Environmental Quality Limit Exceedance

Incident Report on Limit Level Non-compliance

Project	Tsuen Wan Drainage Tunnel
Date	17-Jun-11
Time	1:32 PM
Monitoring Location	O-1(ET)
Parameter	Dissolved Oxygen (marine mid-depth)
Action & Limit Levels (mg/L)	7.02 / 6.94
Measured Level (mg/L)	6.62
Control Station	O-1-C(ET)
Measured Level at the Control Station (mg/L)	6.55
Possible reason for Action or Limit Level Non-compliance	The measured DO level (marine mid-depth) at the monitoring station was below the baseline limit level, but higher than DO level of the corresponding control station. Only loading the stockpile onto a derrick barge was undertaken at the Outfall basin (Portion E) on the monitoring day. No other marine works was conducted. No direct disturbance from the site was observed during monitoring. Therefore, the exceedance was considered to be contributed by natural variation and no further action was required.
Actions taken / to be taken	(1) Silt curtain was provided along the Portion E boundary line and extended from seawater level to the bottom of seabed; (2) floating type silt curtain was employed at the inner side; (3) sufficient slack of silt curtain was allowed to cope with the wave and tidal action to ensure the curtains (outer and inner) were rested on seabed; (4) condition of silt curtains was checked by the supervisor daily; and (5) seawall blocks installation was undertaken within the inner silt curtain area only.
Remarks	None

Prepared by: F. C. Tsang

Designation: Environmental Team Leader

Signature:



Date: 22-Jun-11

Photographic record for exceedance of Dissolved Oxygen (marine mid-depth) recorded at O-1(ET) on 17-Jun-11



Site photo

Interim Notification of Environmental Quality Limit Exceedance

Incident Report on Action Level Non-compliance

Project	Tsuen Wan Drainage Tunnel
Date	17-Jun-11
Time	1:32 PM
Monitoring Location	O-1(ET)
Parameter	Dissolved Oxygen (marine bottom)
Action & Limit Levels (mg/L)	6.70 / 6.48
Measured Level (mg/L)	6.66
Control Station	O-1-C(ET)
Measured Level at the Control Station (mg/L)	6.69
Possible reason for Action or Limit Level Non-compliance	The measured DO level (marine bottom) at the monitoring station was below the baseline action level and slightly lower than DO level of the corresponding control station (about 0.5%). Only loading the stockpile onto a derrick barge was undertaken at the Outfall basin (Portion E) on the monitoring day. No other marine works was conducted. No direct disturbance from the site was observed during monitoring. Therefore, the exceedance was considered to be contributed by natural variation and no further action was required.
Actions taken / to be taken	(1) Silt curtain was provided along the Portion E boundary line and extended from seawater level to the bottom of seabed; (2) floating type silt curtain was employed at the inner side; (3) sufficient slack of silt curtain was allowed to cope with the wave and tidal action to ensure the curtains (outer and inner) were rested on seabed; (4) condition of silt curtains was checked by the supervisor daily; and (5) seawall blocks installation was undertaken within the inner silt curtain area only.
Remarks	None

Prepared by: F. C. Tsang

Designation: Environmental Team Leader

Signature:



Date: 22-Jun-11

Photographic record for exceedance of Dissolved Oxygen (marine bottom) recorded at O-1(ET) on 17-Jun-11



Site photo

Interim Notification of Environmental Quality Limit Exceedance

Incident Report on Limit Level Non-compliance

Project	Tsuen Wan Drainage Tunnel
Date	20-Jun-11
Time	10:40 AM
Monitoring Location	O-1(FT)
Parameter	Dissolved Oxygen (marine surface)
Action & Limit Levels (mg/L)	6.84 / 6.81
Measured Level (mg/L)	6.70
Control Station	O-1-C(FT)
Measured Level at the Control Station (mg/L)	6.86
Possible reason for Action or Limit Level Non-compliance	The measured DO level (marine surface) at the monitoring station was below the baseline limit level and lower than DO level of the corresponding control station (about 2.4%). Only re-position of the inner silt curtain and carrying out fifth shipment of disposal to TM38 were undertaken at the Outfall basin (Portion E) on the monitoring day. No other marine works was conducted. No direct disturbance from the site was observed during monitoring. Therefore, the exceedance was considered to be contributed by natural variation and no further action was required.
Actions taken / to be taken	(1) Silt curtain was provided along the Portion E boundary line and extended from seawater level to the bottom of seabed; (2) floating type silt curtain was employed at the inner side; (3) sufficient slack of silt curtain was allowed to cope with the wave and tidal action to ensure the curtains (outer and inner) were rested on seabed; (4) condition of silt curtains was checked by the supervisor daily; and (5) seawall blocks installation was undertaken within the inner silt curtain area only.
Remarks	None

Prepared by: F. C. Tsang

Designation: Environmental Team Leader

Signature:



Date: 23-Jun-11

Photographic record for exceedance of Dissolved Oxygen (marine surface) recorded at O-1(FT) on 20-Jun-11



Site photo

Interim Notification of Environmental Quality Limit Exceedance

Incident Report on Action Level Non-compliance

Project	Tsuen Wan Drainage Tunnel
Date	20-Jun-11
Time	10:40 AM
Monitoring Location	O-1(FT)
Parameter	Dissolved Oxygen (marine mid-depth)
Action & Limit Levels (mg/L)	6.84 / 6.81
Measured Level (mg/L)	6.81
Control Station	O-1-C(FT)
Measured Level at the Control Station (mg/L)	6.96
Possible reason for Action or Limit Level Non-compliance	The measured DO level (marine mid-depth) at the monitoring station was below the baseline action level and lower than DO level of the corresponding control station (about 2.2%). Only re-position of the inner silt curtain and carrying out fifth shipment of disposal to TM38 were undertaken at the Outfall basin (Portion E) on the monitoring day. No other marine works was conducted. No direct disturbance from the site was observed during monitoring. Therefore, the exceedance was considered to be contributed by natural variation and no further action was required.
Actions taken / to be taken	(1) Silt curtain was provided along the Portion E boundary line and extended from seawater level to the bottom of seabed; (2) floating type silt curtain was employed at the inner side; (3) sufficient slack of silt curtain was allowed to cope with the wave and tidal action to ensure the curtains (outer and inner) were rested on seabed; (4) condition of silt curtains was checked by the supervisor daily; and (5) seawall blocks installation was undertaken within the inner silt curtain area only.
Remarks	None

Prepared by: F. C. Tsang

Designation: Environmental Team Leader

Signature:



Date: 23-Jun-11

Photographic record for exceedance of Dissolved Oxygen (marine mid-depth) recorded at O-1(FT) on 20-Jun-11



Site photo

Interim Notification of Environmental Quality Limit Exceedance

Incident Report on Limit Level Non-compliance

Project	Tsuen Wan Drainage Tunnel
Date	20-Jun-11
Time	10:40 AM
Monitoring Location	O-1(FT)
Parameter	Dissolved Oxygen (marine bottom)
Action & Limit Levels (mg/L)	6.99 / 6.96
Measured Level (mg/L)	6.95
Control Station	O-1-C(FT)
Measured Level at the Control Station (mg/L)	6.79
Possible reason for Action or Limit Level Non-compliance	The measured DO level (marine bottom) at the monitoring station was below the baseline limit level, but higher than the DO level of the corresponding control station. Only re-position of the inner silt curtain and carrying out fifth shipment of disposal to TM38 were undertaken at the Outfall basin (Portion E) on the monitoring day. No other marine works was conducted. No direct disturbance from the site was observed during monitoring. Therefore, the exceedance was considered to be contributed by natural variation and no further action was required.
Actions taken / to be taken	(1) Silt curtain was provided along the Portion E boundary line and extended from seawater level to the bottom of seabed; (2) floating type silt curtain was employed at the inner side; (3) sufficient slack of silt curtain was allowed to cope with the wave and tidal action to ensure the curtains (outer and inner) were rested on seabed; (4) condition of silt curtains was checked by the supervisor daily; and (5) seawall blocks installation was undertaken within the inner silt curtain area only.
Remarks	None

Prepared by: F. C. Tsang

Designation: Environmental Team Leader

Signature:



Date: 23-Jun-11

Photographic record for exceedance of Dissolved Oxygen (marine bottom) recorded at O-1(FT) on 20-Jun-11



Site photo

Interim Notification of Environmental Quality Limit Exceedance

Incident Report on Limit Level Non-compliance

Project	Tsuen Wan Drainage Tunnel
Date	20-Jun-11
Time	2:50 PM
Monitoring Location	O-1(ET)
Parameter	Dissolved Oxygen (marine surface)
Action & Limit Levels (mg/L)	7.02 / 6.94
Measured Level (mg/L)	6.80
Control Station	O-1-C(ET)
Measured Level at the Control Station (mg/L)	6.86
Possible reason for Action or Limit Level Non-compliance	The measured DO level (marine surface) at the monitoring station was below the baseline limit level and slightly lower than the DO level of the corresponding control station (about 0.9%). Only re-position of the inner silt curtain and carrying out fifth shipment of disposal to TM38 were undertaken at the Outfall basin (Portion E) on the monitoring day. No other marine works was conducted. No direct disturbance from the site was observed during monitoring. Therefore, the exceedance was considered to be contributed by natural variation and no further action was required.
Actions taken / to be taken	(1) Silt curtain was provided along the Portion E boundary line and extended from seawater level to the bottom of seabed; (2) floating type silt curtain was employed at the inner side; (3) sufficient slack of silt curtain was allowed to cope with the wave and tidal action to ensure the curtains (outer and inner) were rested on seabed; (4) condition of silt curtains was checked by the supervisor daily; and (5) seawall blocks installation was undertaken within the inner silt curtain area only.
Remarks	None

Prepared by: F. C. Tsang

Designation: Environmental Team Leader

Signature: 

Date: 23-Jun-11

Photographic record for exceedance of Dissolved Oxygen (marine surface) recorded at O-1(ET) on 20-Jun-11



Site photo



Site photo

Interim Notification of Environmental Quality Limit Exceedance

Incident Report on Action Level Non-compliance

Project	Tsuen Wan Drainage Tunnel
Date	20-Jun-11
Time	2:50 PM
Monitoring Location	O-1(ET)
Parameter	Dissolved Oxygen (marine mid-depth)
Action & Limit Levels (mg/L)	7.02 / 6.94
Measured Level (mg/L)	6.99
Control Station	O-1-C(ET)
Measured Level at the Control Station (mg/L)	6.91
Possible reason for Action or Limit Level Non-compliance	The measured DO level (marine mid-depth) at the monitoring station was below the baseline action level, but higher than the DO level of the corresponding control station. Only re-position of the inner silt curtain and carrying out fifth shipment of disposal to TM38 were undertaken at the Outfall basin (Portion E) on the monitoring day. No other marine works was conducted. No direct disturbance from the site was observed during monitoring. Therefore, the exceedance was considered to be contributed by natural variation and no further action was required.
Actions taken / to be taken	(1) Silt curtain was provided along the Portion E boundary line and extended from seawater level to the bottom of seabed; (2) floating type silt curtain was employed at the inner side; (3) sufficient slack of silt curtain was allowed to cope with the wave and tidal action to ensure the curtains (outer and inner) were rested on seabed; (4) condition of silt curtains was checked by the supervisor daily; and (5) seawall blocks installation was undertaken within the inner silt curtain area only.
Remarks	None

Prepared by: F. C. Tsang

Designation: Environmental Team Leader

Signature:



Date: 23-Jun-11

Photographic record for exceedance of Dissolved Oxygen (marine mid-depth) recorded at O-1(ET) on 20-Jun-11



Site photo




Site photo

Interim Notification of Environmental Quality Limit Exceedance

Incident Report on Limit Level Non-compliance

Project	Tsuen Wan Drainage Tunnel
Date	11-Jun-11
Time	9:33 AM
Monitoring Location	O-1(ET)
Parameter	Suspended Solids
Action & Limit Levels (mg/L)	13.25 / 14.39
Measured Level (mg/L)	3.60
Control Station	O-1-C(ET)
Measured Level at the Control Station (mg/L)	2.48
Possible reason for Action or Limit Level Non-compliance	The measured SS level of the monitoring station was below the baseline action/limit level, but slightly higher than 130% of SS level of the corresponding control station. Only outer silt curtain maintenance and repairing was undertaken at the Outfall basin (Portion E) on the monitoring day. No other marine works was conducted. No direct disturbance from the site was observed during monitoring. Therefore, the exceedance was considered to be contributed by natural variation and no further action was required.
Actions taken / to be taken	(1) Silt curtain was provided along the Portion E boundary line and extended from seawater level to the bottom of seabed; (2) floating type silt curtain was employed at the inner side; (3) sufficient slack of silt curtain was allowed to cope with the wave and tidal action to ensure the curtains (outer and inner) were rested on seabed; (4) condition of silt curtains was checked by the supervisor daily; and (5) seawall blocks installation was undertaken within the inner silt curtain area only.
Remarks	None

Prepared by: F. C. Tsang
 Designation: Environmental Team Leader
 Signature: 
 Date: 23-Jun-11

Photographic record for exceedance of Suspended Solids recorded at O-1(ET) on 11-Jun-11



Site photo
(Photo taken at location
near O-1(ET))




Site photo
(Photo taken at location
near O-1-C(ET))

Interim Notifications of Environmental Quality Limits Exceedances

Incident Report on Action Level Non-compliance

Project	Tsuen Wan Drainage Tunnel
Date	22-Jun-11
Time	10:30 AM
Monitoring Location	Sik Sik Yuen Ho Fung College (I-1)
Parameter	Turbidity
Action & Limit Levels (NTU)	9.75 / 12.47
Measured Level (NTU)	10.57
Control Station	I-1-C
Measured Level at the Control Station (NTU)	10.56
Possible reason for Action or Limit Level Non-compliance	The measured turbidity level was higher than the baseline action level and slightly higher than the turbidity level of the control station (I-1-C). General site cleaning, dismantling formwork at Bay 5, 6 and 7, removal of H-pile platform, formwork at cascade bay 8, temporary traffic arrangement (TTA) at Shing Mun Road, and geotechnical instrumentation monitoring were undertaken during measurement. No direct disturbance was observed from the site. The exceedance was considered to be contributed by high turbidity level at upstream location and heavy rainfall. Since the exceedance was non-project related, no further action was required.
Actions taken / to be taken	The following mitigation measures were provided on-site during monitoring: (1) waste water was collected and diverted to waste water treatment plant and treated before discharge; and (2) nullah and site area were separated by sealed concrete block.
Remarks	None

Prepared by: Fan Cheong Tsang
 Designation: Environmental Team Leader
 Signature: 
 Date: 24-Jun-11

Photographic record for exceedance of Turbidity recorded at Sik Sik Yuen Ho Fung College (I-1)
on 22-Jun-11



Site photo



Photo taken at I-1




Photo taken at I-1-C

Interim Notifications of Environmental Quality Limits Exceedances

Incident Report on Limit Level Non-compliance

Project	Tsuen Wan Drainage Tunnel
Date	22-Jun-11
Time	9:55 AM
Monitoring Location	Hong Hoi Chee Hong Temple (I-2)
Parameter	Turbidity
Action & Limit Levels (NTU)	6.63 / 6.99
Measured Level (NTU)	15.19
Control Station	I-2-C
Measured Level at the Control Station (NTU)	15.49
Possible reason for Action or Limit Level Non-compliance	The measured turbidity level was higher than the baseline limit level, but lower than the turbidity level of the control station (I-2-C). General site cleaning, housekeeping and temporary traffic arrangement (TTA), excavation (drilling holes and rock splitting) at vortex drop shaft, drilling holes at man access shaft, rock breaking for receiving pit at Portion G slope, and breaking footing of piling platform and excavation for skin wall were undertaken during measurement. No direct disturbance was observed from the site. The exceedance was considered to be contributed by high turbidity level at upstream location and heavy rainfall. Since the exceedance was non-project related, no further action was required.
Actions taken / to be taken	The following mitigation measures were provided on-site during monitoring: (1) wastewater was collected and diverted to waste water treatment plant prior to discharge; (2) existing stream was diverted and bunded by sealed concrete block wall; and (3) existing stream was bunded off by sand bag to prevent any excavated material washing out from working area.
Remarks	None

Prepared by: Fan Cheong Tsang
 Designation: Environmental Team Leader
 Signature: 
 Date: 24-Jun-11

Photographic record for exceedance of Turbidity recorded at Hong Hoi Chee Hong Temple (I-2) on 22-Jun-11



Site photo



Photo taken at I-2




Photo taken at I-2-C

Interim Notifications of Environmental Quality Limits Exceedances

Incident Report on Limit Level Non-compliance

Project	Tsuen Wan Drainage Tunnel
Date	22-Jun-11
Time	9:20 AM
Monitoring Location	Squatters (I-3)
Parameter	Turbidity
Action & Limit Levels (NTU)	3.99 / 4.18
Measured Level (NTU)	9.08
Control Station	I-3-C
Measured Level at the Control Station (NTU)	9.20
Possible reason for Action or Limit Level Non-compliance	The measured turbidity level was higher than the baseline limit level, but lower than the turbidity level of the control station (I-3-C). General site cleaning and housekeeping, monitoring of deformation monitoring point (DMP), drilling splitting holes and rock breaking in shaft, curing of planter wall and backfilling, and slope reinstatement and backfilling at PB wall were undertaken during measurement. No direct disturbance was observed from the site. The exceedance was considered to be contributed by high turbidity level at upstream location and heavy rainfall. Since the exceedance was non-project related, no further action was required.
Actions taken / to be taken	The following mitigation measures were provided on-site during monitoring: (1) wastewater was collected and diverted to waste water treatment plant prior to discharge; (2) existing stream was diverted and bunded by sealed concrete block wall; and (3) excavated area was bunded and sealed by concrete block wall to prevent any excavated material runoff from working area.
Remarks	None

Prepared by: Fan Cheong Tsang
 Designation: Environmental Team Leader
 Signature: 
 Date: 24-Jun-11

Photographic record for exceedance of Turbidity recorded at Squatters (I-3) on 22-Jun-11



Photo taken at I-3




Photo taken at I-3-C

Interim Notifications of Environmental Quality Limits Exceedances

Incident Report on Action Level Non-compliance

Project	Tsuen Wan Drainage Tunnel
Date	17-Jun-11
Time	11:50 AM
Monitoring Location	Sik Sik Yuen Ho Fung College (I-1)
Parameter	Suspended Solids (SS)
Action & Limit Levels (mg/L)	8.85 / 10.17
Measured Level (mg/L)	9.65
Control Station	I-1-C
Measured Level at the Control Station (mg/L)	9.00
Possible reason for Action or Limit Level Non-compliance	The measured SS level was higher than the baseline action level but lower than 120% of the SS level of the control station (I-1-C). General site cleaning, dismantling formwork at Bay 5 and 6, filling tie bar hole in cascade, temporary traffic arrangement (TTA) at Shing Mun Road and geotechnical instrumentation monitoring were undertaken during measurement. No direct disturbance was observed from the site. The exceedance was considered to be contributed by high SS level at upstream location and heavy rainfall. Since the exceedance was non-project related, no further action was required.
Actions taken / to be taken	The following mitigation measures were provided on-site during monitoring: (1) waste water was collected and diverted to waste water treatment plant and treated before discharge; and (2) nullah and site area were separated by sealed concrete block.
Remarks	None

Prepared by: Fan Cheong Tsang
 Designation: Environmental Team Leader
 Signature: 
 Date: 24-Jun-11

Photographic record for exceedance of Suspended Solids (SS) recorded at Sik Sik Yuen Ho Fung College (I-1) on 17-Jun-11



Site photo



Photo taken at I-1




Photo taken at I-1-C

Interim Notifications of Environmental Quality Limits Exceedances

Incident Report on Limit Level Non-compliance

Project	Tsuen Wan Drainage Tunnel
Date	17-Jun-11
Time	11:09 AM
Monitoring Location	Hong Hoi Chee Hong Temple (I-2)
Parameter	Suspended Solids (SS)
Action & Limit Levels (mg/L)	7.68 / 8.34
Measured Level (mg/L)	8.85
Control Station	I-2-C
Measured Level at the Control Station (mg/L)	8.75
Possible reason for Action or Limit Level Non-compliance	The measured SS level was higher than the baseline limit level, but lower than 120% of the SS level of the control station (I-2-C). General site cleaning, housekeeping and temporary traffic arrangement (TTA), excavation (rock splitting and mucking) at vortex drop shaft, drilling, survey check and rock mapping at man access shaft, excavating the receiving pit at Portion G, and breaking footing of piling platform were undertaken during measurement. No direct disturbance was observed from the site. The exceedance was considered to be contributed by high SS level at upstream location and heavy rainfall. Since the exceedance was non-project related, no further action was required.
Actions taken / to be taken	The following mitigation measures were provided on-site during monitoring: (1) wastewater was collected and diverted to waste water treatment plant prior to discharge; (2) existing stream was diverted and bunded by sealed concrete block wall; and (3) existing stream was bunded off by sand bag to prevent any excavated material washing out from working area.
Remarks	None

Prepared by: Fan Cheong Tsang
 Designation: Environmental Team Leader
 Signature: 
 Date: 24-Jun-11

Photographic record for exceedance of Suspended Solids (SS) recorded at Hong Hoi Chee Hong Temple (I-2) on 17-Jun-11



Site photo

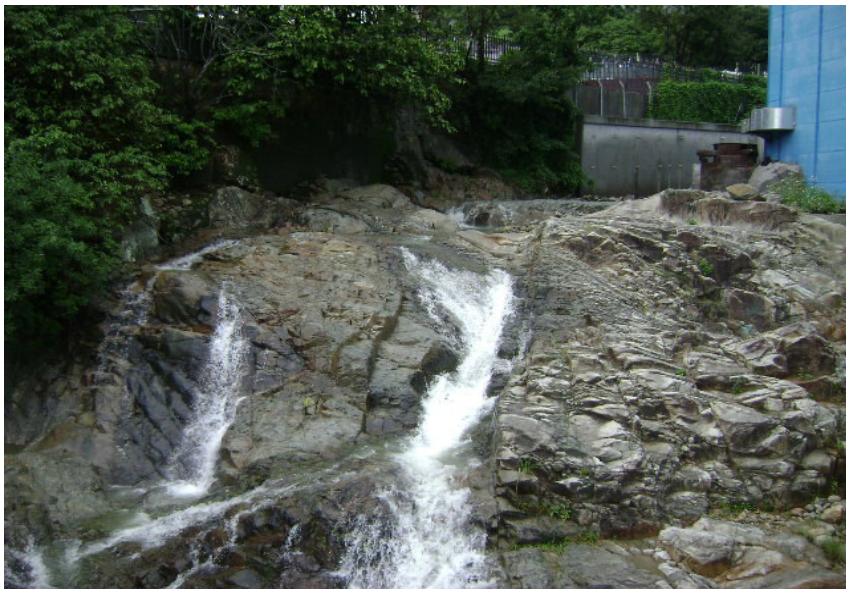


Photo taken at I-2




Photo taken at I-2-C

Interim Notifications of Environmental Quality Limits Exceedances

Incident Report on Limit Level Non-compliance

Project	Tsuen Wan Drainage Tunnel
Date	17-Jun-11
Time	10:12 AM
Monitoring Location	Squatters (I-3)
Parameter	Suspended Solids (SS)
Action & Limit Levels (mg/L)	6.13 / 7.23
Measured Level (mg/L)	18.10
Control Station	I-3-C
Measured Level at the Control Station (mg/L)	17.75
Possible reason for Action or Limit Level Non-compliance	The measured SS level was higher than the baseline limit level, but lower than 120% of the SS level of the control station (I-3-C). General site cleaning and housekeeping, monitoring of de-formation monitoring point (DMP), drilling rock dowel and splitting holes in shaft, and slope cutting and backfilling at PB wall were undertaken during measurement. No direct disturbance was observed from the site. The exceedance was considered to be contributed by high SS level at upstream location and heavy rainfall. Since the exceedance was non-project related, no further action was required.
Actions taken / to be taken	The following mitigation measures were provided on-site during monitoring: (1) wastewater was collected and diverted to waste water treatment plant prior to discharge; (2) existing stream was diverted and bunded by sealed concrete block wall; and (3) excavated area was bunded and sealed by concrete block wall to prevent any excavated material runoff from working area.
Remarks	None

Prepared by: Fan Cheong Tsang
 Designation: Environmental Team Leader
 Signature: 
 Date: 24-Jun-11

Photographic record for exceedance of Suspended Solids (SS) recorded at Squatters (I-3) on 17-Jun-11



Photo taken at I-3



Photo taken at I-3-C

Interim Notification of Environmental Quality Limit Exceedance

Incident Report on Limit Level Non-compliance

Project	Tsuen Wan Drainage Tunnel
Date	24-Jun-11
Time	8:55 AM
Monitoring Location	O-1(ET)
Parameter	Dissolved Oxygen (marine surface)
Action & Limit Levels (mg/L)	7.02 / 6.94
Measured Level (mg/L)	6.92
Control Station	O-1-C(ET)
Measured Level at the Control Station (mg/L)	6.88
Possible reason for Action or Limit Level Non-compliance	The measured DO level (marine surface) at the monitoring station was below the baseline limit level, but higher than the DO level of the corresponding control station. Only re-position of the silt curtain and loading the excavated materials to derrick barge were undertaken at the Outfall basin (Portion E) on the monitoring day. No other marine works was conducted. No direct disturbance from the site was observed during monitoring. Therefore, the exceedance was considered to be contributed by natural variation and no further action was required.
Actions taken / to be taken	(1) Silt curtain was provided along the Portion E boundary line and extended from seawater level to the bottom of seabed; (2) floating type silt curtain was employed at the inner side; (3) sufficient slack of silt curtain was allowed to cope with the wave and tidal action to ensure the curtains (outer and inner) were rested on seabed; (4) condition of silt curtains was checked by the supervisor daily; and (5) seawall blocks installation was undertaken within the inner silt curtain area only.
Remarks	None

Prepared by: F. C. Tsang

Designation: Environmental Team Leader

Signature:



Date: 28-Jun-11

Photographic record for exceedance of Dissolved Oxygen (marine surface) recorded at O-1(ET) on 24-Jun-11




Site photo (Photo taken at location near O-1(ET))

Interim Notifications of Environmental Quality Limits Exceedances

Incident Report on Limit Level Non-compliance

Project	Tsuen Wan Drainage Tunnel
Date	22-Jun-11
Time	9:55 AM
Monitoring Location	Hong Hoi Chee Hong Temple (I-2)
Parameter	Suspended Solids
Action & Limit Levels (mg/L)	7.68 / 8.34
Measured Level (mg/L)	14.05
Control Station	I-2-C
Measured Level at the Control Station (mg/L)	14.00
Possible reason for Action or Limit Level Non-compliance	The measured SS level was higher than the baseline limit level, but nearly the same as the SS level of the control station (I-2-C). General site cleaning, housekeeping and temporary traffic arrangement (TTA), excavation (drilling holes and rock splitting) at vortex drop shaft, drilling holes at man access shaft, rock breaking for receiving pit at Portion G slope, and breaking footing of piling platform and excavation for skin wall were undertaken during measurement. No direct disturbance was observed from the site. The exceedance was considered to be contributed by high SS level at upstream location and heavy rainfall. Since the exceedance was non-project related, no further action was required.
Actions taken / to be taken	The following mitigation measures were provided on-site during monitoring: (1) wastewater was collected and diverted to waste water treatment plant prior to discharge; (2) existing stream was diverted and bunded by sealed concrete block wall; and (3) existing stream was bunded off by sand bag to prevent any excavated material washing out from working area.
Remarks	None

Prepared by: Fan Cheong Tsang
 Designation: Environmental Team Leader
 Signature: 
 Date: 28-Jun-11

Photographic record for exceedance of Suspended Solids recorded at Hong Hoi Chee Hong Temple (I-2) on 22-Jun-11



Site photo



Photo taken at I-2



Photo taken at I-2-C

Interim Notification of Environmental Quality Limit Exceedance

Incident Report on Limit Level Non-compliance

Project	Tsuen Wan Drainage Tunnel
Date	27-Jun-11
Time	3:30 PM
Monitoring Location	O-1(FT)
Parameter	Dissolved Oxygen (marine surface)
Action & Limit Levels (mg/L)	6.84 / 6.81
Measured Level (mg/L)	6.74
Control Station	O-1-C(FT)
Measured Level at the Control Station (mg/L)	6.69
Possible reason for Action or Limit Level Non-compliance	The measured DO level (marine surface) at the monitoring station was below the baseline limit level, but higher than the DO level of the corresponding control station. The derrick barge was unloading the excavated material at Tuen Mun Area 38 on the monitoring day and no marine works was conducted at the Outfall basin (Portion E) on the same day. No direct disturbance from the site was observed during monitoring. Therefore, the exceedance was considered to be contributed by natural variation and no further action was required.
Actions taken / to be taken	(1) Silt curtain was provided along the Portion E boundary line and extended from seawater level to the bottom of seabed; (2) floating type silt curtain was employed at the inner side; (3) sufficient slack of silt curtain was allowed to cope with the wave and tidal action to ensure the curtains (outer and inner) were rested on seabed; (4) condition of silt curtains was checked by the supervisor daily; and (5) seawall blocks installation was undertaken within the inner silt curtain area only.
Remarks	None

Prepared by: F. C. Tsang

Designation: Environmental Team Leader

Signature:



Date: 29-Jun-11

Photographic record for exceedance of Dissolved Oxygen (marine surface) recorded at O-1(FT) on 27-Jun-11



Site photo



Site photo



Site photo

Interim Notification of Environmental Quality Limit Exceedance

Incident Report on Limit Level Non-compliance

Project	Tsuen Wan Drainage Tunnel
Date	27-Jun-11
Time	10:40 AM
Monitoring Location	O-1(ET)
Parameter	Dissolved Oxygen (marine surface)
Action & Limit Levels (mg/L)	7.02 / 6.94
Measured Level (mg/L)	6.89
Control Station	O-1-C(ET)
Measured Level at the Control Station (mg/L)	6.82
Possible reason for Action or Limit Level Non-compliance	The measured DO level (marine surface) at the monitoring station was below the baseline limit level, but higher than the DO level of the corresponding control station. The derrick barge was unloading the excavated material at Tuen Mun Area 38 on the monitoring day and no marine works was conducted at the Outfall basin (Portion E) on the same day. No direct disturbance from the site was observed during monitoring. Therefore, the exceedance was considered to be contributed by natural variation and no further action was required.
Actions taken / to be taken	(1) Silt curtain was provided along the Portion E boundary line and extended from seawater level to the bottom of seabed; (2) floating type silt curtain was employed at the inner side; (3) sufficient slack of silt curtain was allowed to cope with the wave and tidal action to ensure the curtains (outer and inner) were rested on seabed; (4) condition of silt curtains was checked by the supervisor daily; and (5) seawall blocks installation was undertaken within the inner silt curtain area only.
Remarks	None

Prepared by: F. C. Tsang

Designation: Environmental Team Leader

Signature:



Date: 29-Jun-11

Photographic record for exceedance of Dissolved Oxygen (marine surface) recorded at O-1(ET) on 27-Jun-11



Site photo



Site photo

Interim Notification of Environmental Quality Limit Exceedance

Incident Report on Limit Level Non-compliance

Project	Tsuen Wan Drainage Tunnel
Date	27-Jun-11
Time	10:40 AM
Monitoring Location	O-1(ET)
Parameter	Dissolved Oxygen (marine mid-depth)
Action & Limit Levels (mg/L)	7.02 / 6.94
Measured Level (mg/L)	6.82
Control Station	O-1-C(ET)
Measured Level at the Control Station (mg/L)	6.97
Possible reason for Action or Limit Level Non-compliance	The measured DO level (marine mid-depth) at the monitoring station was below the baseline limit level and lower than the DO level of the corresponding control station (about 2.2%). The derrick barge was unloading the excavated material at Tuen Mun Area 38 on the monitoring day and no marine works was conducted at the Outfall basin (Portion E) on the same day. No direct disturbance from the site was observed during monitoring. Therefore, the exceedance was considered to be contributed by natural variation and no further action was required.
Actions taken / to be taken	(1) Silt curtain was provided along the Portion E boundary line and extended from seawater level to the bottom of seabed; (2) floating type silt curtain was employed at the inner side; (3) sufficient slack of silt curtain was allowed to cope with the wave and tidal action to ensure the curtains (outer and inner) were rested on seabed; (4) condition of silt curtains was checked by the supervisor daily; and (5) seawall blocks installation was undertaken within the inner silt curtain area only.
Remarks	None

Prepared by: F. C. Tsang

Designation: Environmental Team Leader

Signature:



Date: 29-Jun-11

Photographic record for exceedance of Dissolved Oxygen (marine mid-depth) recorded at O-1(ET) on 27-Jun-11



Site photo



Site photo

Interim Notification of Environmental Quality Limit Exceedance

Incident Report on Limit Level Non-compliance

Project	Tsuen Wan Drainage Tunnel
Date	29-Jun-11
Time	4:55 PM
Monitoring Location	O-1(FT)
Parameter	Dissolved Oxygen (marine surface)
Action & Limit Levels (mg/L)	6.84 / 6.81
Measured Level (mg/L)	6.78
Control Station	O-1-C(FT)
Measured Level at the Control Station (mg/L)	6.58
Possible reason for Action or Limit Level Non-compliance	The measured DO level (marine surface) at the monitoring station was below the baseline limit level, but higher than the DO level of the corresponding control station. Only excavation for seawall blocks formation was undertaken at the Outfall basin (Portion E) on the monitoring day. No other marine works was conducted. No direct disturbance from the site was observed during monitoring. Therefore, the exceedance was considered as non-project related and no further action was required.
Actions taken / to be taken	(1) Silt curtain was provided along the Portion E boundary line and extended from seawater level to the bottom of seabed; (2) floating type silt curtain was employed at the inner side; (3) sufficient slack of silt curtain was allowed to cope with the wave and tidal action to ensure the curtains (outer and inner) were rested on seabed; (4) condition of silt curtains was checked by the supervisor daily; and (5) seawall blocks installation was undertaken within the inner silt curtain area only.
Remarks	None

Prepared by: F. C. Tsang

Designation: Environmental Team Leader

Signature:



Date: 04-Jul-11

Photographic record for exceedance of Dissolved Oxygen (marine surface) recorded at O-1(FT) on 29-Jun-11



Site photo
(Photo taken at location near Greenview Terrace)



On 29 June 2011, 76.5 mm heavy rainfall was recorded. Huge amount of muddy water discharged from streams and drainage outfalls among the coast into marine water body was observed during afternoon on the monitoring day and caused turbid sea surface.

Photos of drainage outfall near the Belvedere Garden

Interim Notification of Environmental Quality Limit Exceedance

Incident Report on Limit Level Non-compliance

Project	Tsuen Wan Drainage Tunnel
Date	29-Jun-11
Time	4:55 PM
Monitoring Location	O-1(FT)
Parameter	Dissolved Oxygen (marine mid-depth)
Action & Limit Levels (mg/L)	6.84 / 6.81
Measured Level (mg/L)	6.68
Control Station	O-1-C(FT)
Measured Level at the Control Station (mg/L)	6.76
Possible reason for Action or Limit Level Non-compliance	The measured DO level (marine mid-depth) at the monitoring station was below the baseline limit level and slightly lower than the DO level of the corresponding control station (about 1.2%). Only excavation for seawall blocks formation was undertaken at the Outfall basin (Portion E) on the monitoring day. No other marine works was conducted. No direct disturbance from the site was observed during monitoring. Therefore, the exceedance was considered as non-project related and no further action was required.
Actions taken / to be taken	(1) Silt curtain was provided along the Portion E boundary line and extended from seawater level to the bottom of seabed; (2) floating type silt curtain was employed at the inner side; (3) sufficient slack of silt curtain was allowed to cope with the wave and tidal action to ensure the curtains (outer and inner) were rested on seabed; (4) condition of silt curtains was checked by the supervisor daily; and (5) seawall blocks installation was undertaken within the inner silt curtain area only.
Remarks	None

Prepared by: F. C. Tsang

Designation: Environmental Team Leader

Signature:



Date: 04-Jul-11

Photographic record for exceedance of Dissolved Oxygen (marine mid-depth) recorded at O-1(FT) on 29-Jun-11



Site photo
(Photo taken at location
near Greenview Terrace)



On 29 June 2011, 76.5 mm heavy rainfall was recorded. Huge amount of muddy water discharged from streams and drainage outfalls among the coast into marine water body was observed during afternoon on the monitoring day and caused turbid sea surface.

Photos of drainage outfall near the Belvedere Garden

Interim Notification of Environmental Quality Limit Exceedance

Incident Report on Limit Level Non-compliance

Project	Tsuen Wan Drainage Tunnel
Date	29-Jun-11
Time	4:55 PM
Monitoring Location	O-1(FT)
Parameter	Dissolved Oxygen (marine bottom)
Action & Limit Levels (mg/L)	6.99 / 6.96
Measured Level (mg/L)	6.79
Control Station	O-1-C(FT)
Measured Level at the Control Station (mg/L)	6.80
Possible reason for Action or Limit Level Non-compliance	The measured DO level (marine bottom) at the monitoring station was below the baseline limit level and slightly lower than the DO level of the corresponding control station (0.01mg/L). Only excavation for seawall blocks formation was undertaken at the Outfall basin (Portion E) on the monitoring day. No other marine works was conducted. No direct disturbance from the site was observed during monitoring. Therefore, the exceedance was considered as non-project related and no further action was required.
Actions taken / to be taken	(1) Silt curtain was provided along the Portion E boundary line and extended from seawater level to the bottom of seabed; (2) floating type silt curtain was employed at the inner side; (3) sufficient slack of silt curtain was allowed to cope with the wave and tidal action to ensure the curtains (outer and inner) were rested on seabed; (4) condition of silt curtains was checked by the supervisor daily; and (5) seawall blocks installation was undertaken within the inner silt curtain area only.
Remarks	None

Prepared by: F. C. Tsang

Designation: Environmental Team Leader

Signature:



Date: 04-Jul-11

Photographic record for exceedance of Dissolved Oxygen (marine bottom) recorded at O-1(FT) on 29-Jun-11



Site photo
(Photo taken at location
near Greenview Terrace)



On 29 June 2011, 76.5 mm heavy rainfall was recorded. Huge amount of muddy water discharged from streams and drainage outfalls among the coast into marine water body was observed during afternoon on the monitoring day and caused turbid sea surface.

Photos of drainage outfall near the Belvedere Garden

Interim Notification of Environmental Quality Limit Exceedance

Incident Report on Limit Level Non-compliance

Project	Tsuen Wan Drainage Tunnel
Date	29-Jun-11
Time	10:20 AM
Monitoring Location	O-1(ET)
Parameter	Dissolved Oxygen (marine surface)
Action & Limit Levels (mg/L)	7.02 / 6.94
Measured Level (mg/L)	6.82
Control Station	O-1-C(ET)
Measured Level at the Control Station (mg/L)	6.70
Possible reason for Action or Limit Level Non-compliance	The measured DO level (marine surface) at the monitoring station was below the baseline limit level, but higher than the DO level of the corresponding control station. Only excavation for seawall blocks formation was undertaken at the Outfall basin (Portion E) on the monitoring day. No other marine works was conducted. No direct disturbance from the site was observed during monitoring. Therefore, the exceedance was considered as non-project related and no further action was required.
Actions taken / to be taken	(1) Silt curtain was provided along the Portion E boundary line and extended from seawater level to the bottom of seabed; (2) floating type silt curtain was employed at the inner side; (3) sufficient slack of silt curtain was allowed to cope with the wave and tidal action to ensure the curtains (outer and inner) were rested on seabed; (4) condition of silt curtains was checked by the supervisor daily; and (5) seawall blocks installation was undertaken within the inner silt curtain area only.
Remarks	None

Prepared by: F. C. Tsang

Designation: Environmental Team Leader

Signature:



Date: 04-Jul-11

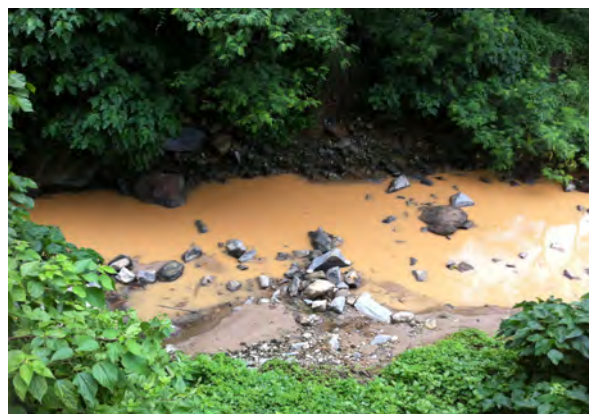
Photographic record for exceedance of Dissolved Oxygen (marine surface) recorded at O-1(ET) on 29-Jun-11



Site photo
(The marine water between the inner and outer silt curtain was clearer than the marine water outside the construction site. No leakage of silt curtain was observed.)



On 29 June 2011, 76.5 mm heavy rainfall was recorded. Huge amount of muddy water discharged from streams and drainage outfalls among the coast into marine water body was observed during monitoring and caused turbid sea surface.



Photos of a stream between The Bay Bridge and Long Beach Garden

Interim Notification of Environmental Quality Limit Exceedance

Incident Report on Limit Level Non-compliance

Project	Tsuen Wan Drainage Tunnel
Date	29-Jun-11
Time	10:20 AM
Monitoring Location	O-1(ET)
Parameter	Dissolved Oxygen (marine mid-depth)
Action & Limit Levels (mg/L)	7.02 / 6.94
Measured Level (mg/L)	6.72
Control Station	O-1-C(ET)
Measured Level at the Control Station (mg/L)	6.81
Possible reason for Action or Limit Level Non-compliance	The measured DO level (marine mid-depth) at the monitoring station was below the baseline limit level and lower than the DO level of the corresponding control station (about 1.3%). Only excavation for seawall blocks formation was undertaken at the Outfall basin (Portion E) on the monitoring day. No other marine works was conducted. No direct disturbance from the site was observed during monitoring. Therefore, the exceedance was considered as non-project related and no further action was required.
Actions taken / to be taken	(1) Silt curtain was provided along the Portion E boundary line and extended from seawater level to the bottom of seabed; (2) floating type silt curtain was employed at the inner side; (3) sufficient slack of silt curtain was allowed to cope with the wave and tidal action to ensure the curtains (outer and inner) were rested on seabed; (4) condition of silt curtains was checked by the supervisor daily; and (5) seawall blocks installation was undertaken within the inner silt curtain area only.
Remarks	None

Prepared by: F. C. Tsang

Designation: Environmental Team Leader

Signature:



Date: 04-Jul-11

Photographic record for exceedance of Dissolved Oxygen (marine mid-depth) recorded at O-1(ET) on 29-Jun-11



Site photo
(The marine water between the inner and outer silt curtain was clearer than the marine water outside the construction site. No leakage of silt curtain was observed.)



On 29 June 2011, 76.5 mm heavy rainfall was recorded. Huge amount of muddy water discharged from streams and drainage outfalls among the coast into marine water body was observed during monitoring and caused turbid sea surface.



Photos of a stream between The Bay Bridge and Long Beach Garden

Interim Notification of Environmental Quality Limit Exceedance

Incident Report on Limit Level Non-compliance

Project	Tsuen Wan Drainage Tunnel
Date	27-Jun-11
Time	10:40 AM
Monitoring Location	O-1(ET)
Parameter	Suspended Solids (SS)
Action & Limit Levels (mg/L)	13.25 / 14.39
Measured Level (mg/L)	9.20
Control Station	O-1-C(ET)
Measured Level at the Control Station (mg/L)	5.97
Possible reason for Action or Limit Level Non-compliance	The measured SS level at the monitoring station was below the baseline action/limit level, but higher than the 130% of SS level of the corresponding control station. The derrick barge was unloading the excavated material at Tuen Mun Area 38 on the monitoring day and no marine works was conducted at the Outfall basin (Portion E) on the same day. No direct disturbance from the site was observed during monitoring. Therefore, the exceedance was considered to be contributed by natural variation and no further action was required.
Actions taken / to be taken	(1) Silt curtain was provided along the Portion E boundary line and extended from seawater level to the bottom of seabed; (2) floating type silt curtain was employed at the inner side; (3) sufficient slack of silt curtain was allowed to cope with the wave and tidal action to ensure the curtains (outer and inner) were rested on seabed; (4) condition of silt curtains was checked by the supervisor daily; and (5) seawall blocks installation was undertaken within the inner silt curtain area only.
Remarks	None

Prepared by: F. C. Tsang

Designation: Environmental Team Leader

Signature:



Date: 06-Jul-11

Photographic record for exceedance of Suspended Solids (SS) recorded at O-1(ET) on 27-Jun-11



Site photo



Site photo