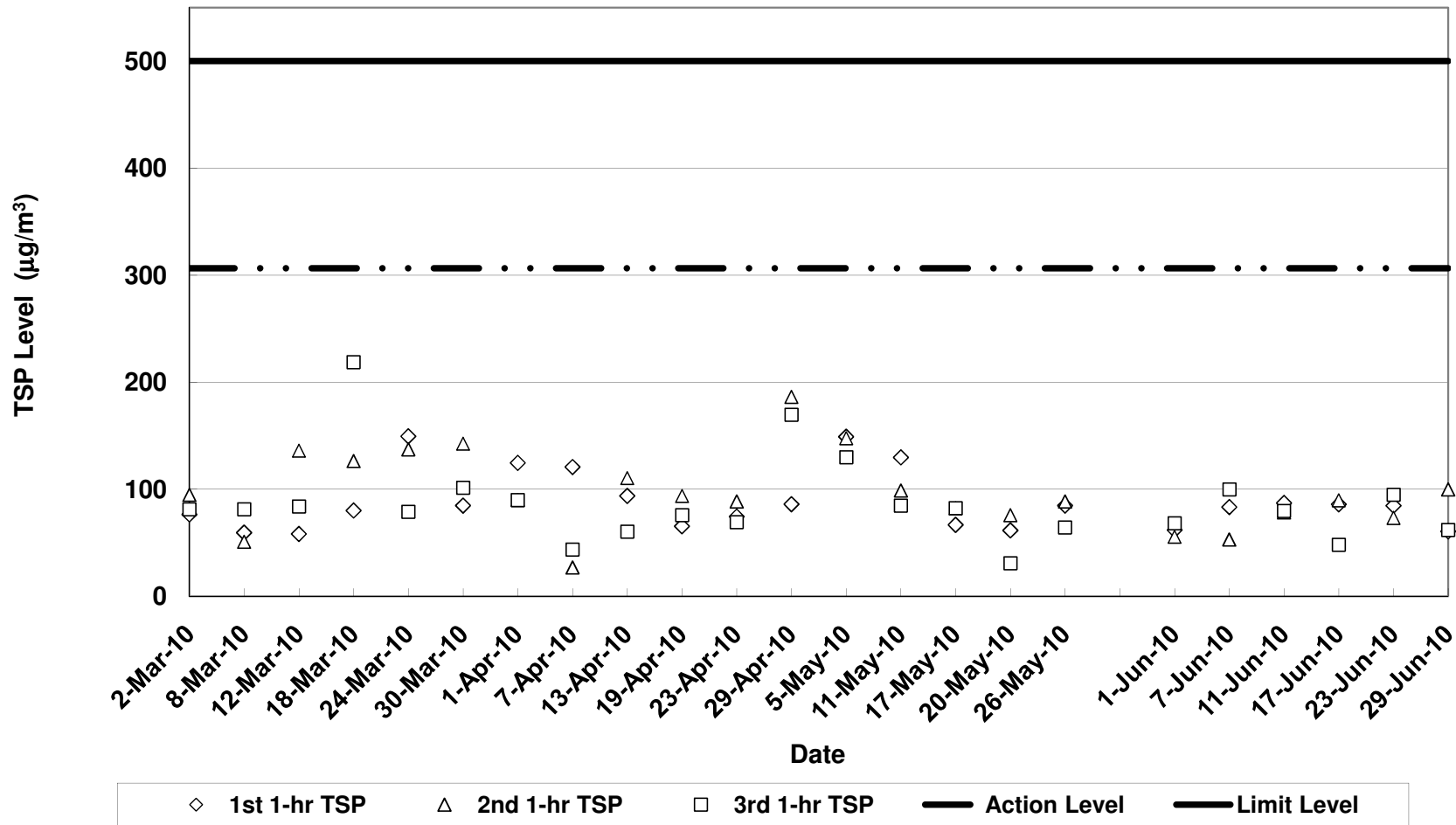


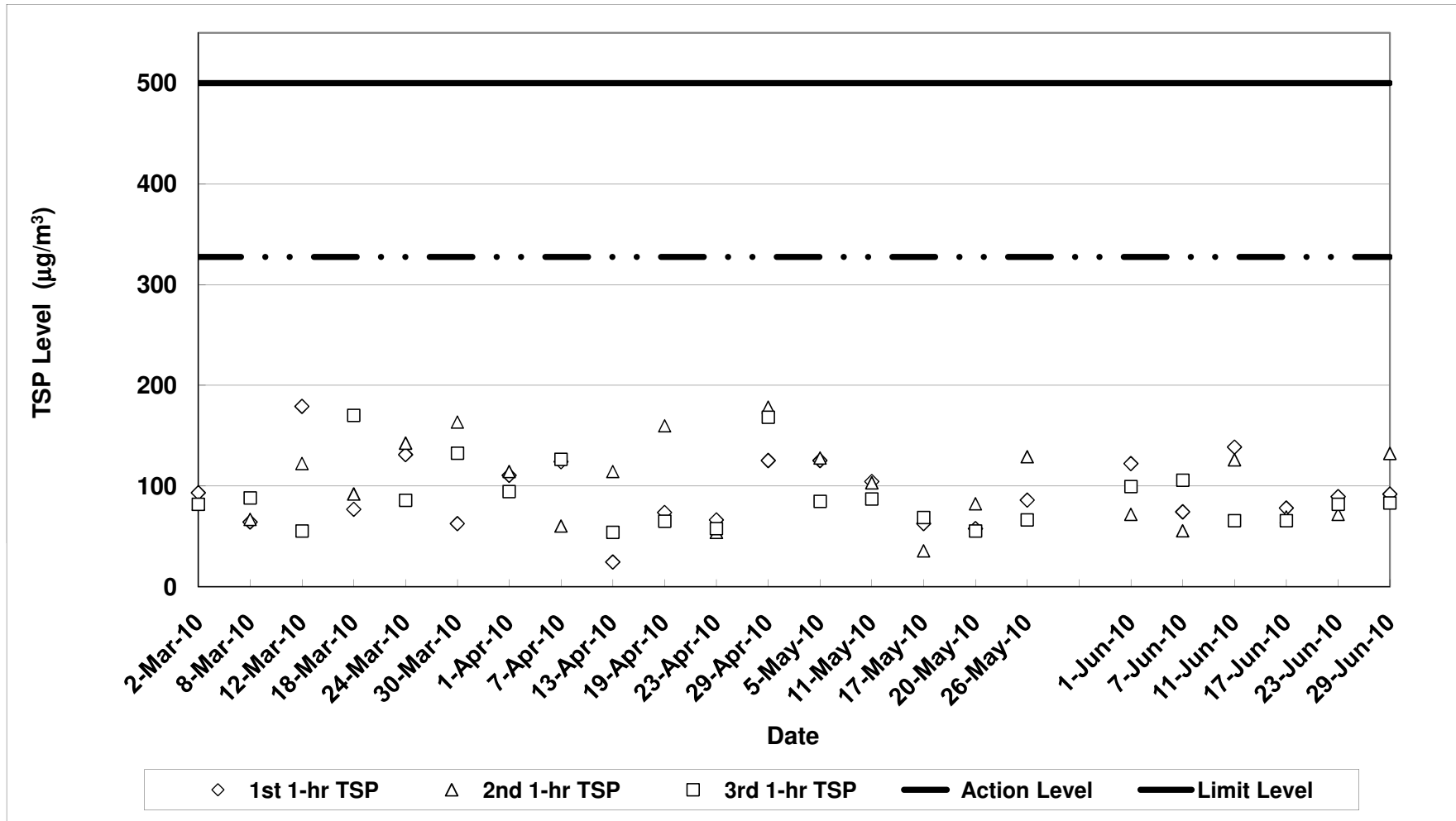
Air Quality Impact Monitoring Results (1-Hour TSP)

Location	Monitoring Date	Weather Conditions	Wind Speed with Direction (m/s)	Temp (°C)	Timer-I	Timer-F	Time (mins)	Flow-I (CFM)	Flow-F (CFM)	Flow-I (m ³ /min)	Flow-F (m ³ /min)	Flow-avg (m ³ /min)	Volume (m ³)	Weight-I (g)	Weight-F (g)	Weight-diff. (g)	1-hr TSP (µg/m ³)	Average 1-Hr TSP (µg/m ³)	Action/Limit Levels (µg/m ³)	Observation / Site Condition	Remark
Sik Sik Yuen Ho Fung College - Intake (ASR1)	01-Jun-10	Fine	0.5E	27	595242	595142	60.0	40	40	1.32	1.32	1.32	79.09	2.8435	2.8484	0.0049	62.0	62.0	306.6/500	Steel bending and erection	Traffic
		Fine	0.5E	27	595142	595242	60.0	40	40	1.32	1.32	1.32	79.09	2.8580	2.8624	0.0044	55.6	55.6			
		Fine	0.5E	27	595242	595342	60.0	40	40	1.32	1.32	1.32	79.09	2.8175	2.8229	0.0054	68.3	68.3			
	07-Jun-10	Sunny	0.5E	28	595342	595442	60.0	40	40	1.32	1.32	1.32	79.09	2.8661	2.8727	0.0066	83.5	83.5			
		Sunny	0.5E	28	595442	595542	60.0	40	40	1.32	1.32	1.32	79.09	2.8348	2.8390	0.0042	53.1	53.1			
		Sunny	0.5E	28	595542	595642	60.0	40	40	1.32	1.32	1.32	79.09	2.8561	2.8640	0.0079	99.9	99.9			
	11-Jun-10	Fine	0.2E	27	595642	595742	60.0	40	40	1.32	1.32	1.318	79.09	2.8173	2.8242	0.0069	87.2	87.2			
		Fine	0.2E	27	595742	595842	60.0	40	40	1.32	1.32	1.32	79.09	2.8274	2.8336	0.0062	78.4	78.4			
		Fine	0.2E	27	595842	595942	60.0	40	40	1.32	1.32	1.32	79.09	2.8310	2.8373	0.0063	79.7	79.7			
	17-Jun-10	Fine	0.3E	28	595942	596042	60.0	40	40	1.32	1.32	1.32	79.09	2.8362	2.8430	0.0068	86.0	86.0			
		Fine	0.3E	28	596042	596142	60.0	40	40	1.32	1.32	1.32	79.09	2.8603	2.8674	0.0071	89.8	89.8			
		Fine	0.3E	28	596142	596242	60.0	40	40	1.32	1.32	1.32	79.09	2.8349	2.8387	0.0038	48.0	48.0			
23-Jun-10	Cloudy	0.3E	29	596242	596342	60.0	40	40	1.32	1.32	1.32	79.09	2.8727	2.8794	0.0067	94.7	94.7				
	Cloudy	0.3E	29	596342	596442	60.0	40	40	1.32	1.32	1.32	79.09	2.8746	2.8804	0.0058	73.3	73.3				
	Cloudy	0.3E	29	596442	596542	60.0	40	40	1.32	1.32	1.32	79.09	2.8331	2.8406	0.0075	94.8	94.8				
29-Jun-10	Sunny	0.2E	30	596542	596642	60.0	40	40	1.32	1.32	1.32	79.09	2.8477	2.8526	0.0048	60.7	60.7				
	Sunny	0.2E	30	596642	596742	60.0	40	40	1.32	1.32	1.32	79.09	2.8790	2.8869	0.0079	99.9	99.9				
	Sunny	0.2E	30	596742	596842	60.0	40	40	1.32	1.32	1.32	79.09	2.8647	2.8696	0.0049	62.0	62.0				
Hong Hai Chee Hong Temple - Intake (ASR3)	01-Jun-10	Fine	0.8E	27	563690	563690	60.0	40	40	1.32	1.32	1.32	79.33	2.8104	2.8201	0.0097	122.3	122.3	327.4/500	Breaking work	Traffic
		Fine	0.8E	27	563790	563790	60.0	40	40	1.32	1.32	1.32	79.33	2.8428	2.8485	0.0057	71.9	71.9			
		Fine	0.8E	27	563790	563890	60.0	40	40	1.32	1.32	1.32	79.33	2.8493	2.8572	0.0079	99.6	99.6			
	07-Jun-10	Sunny	0.2E	28	563890	563990	60.0	40	40	1.32	1.32	1.32	79.33	2.9017	2.9076	0.0059	74.4	74.4			
		Sunny	0.2E	28	563990	564090	60.0	40	40	1.32	1.32	1.32	79.33	2.8667	2.8711	0.0044	55.5	55.5			
		Sunny	0.2E	28	564090	564190	60.0	40	40	1.32	1.32	1.32	79.33	2.8553	2.8637	0.0084	105.9	105.9			
	11-Jun-10	Fine	0.2E	27	564190	564290	60.0	40	40	1.32	1.32	1.32	79.33	2.9272	2.9362	0.0110	136.7	136.7			
		Fine	0.2E	27	564290	564390	60.0	40	40	1.32	1.32	1.32	79.33	2.8705	2.8802	0.0100	126.1	126.1			
		Fine	0.2E	27	564390	564490	60.0	40	40	1.32	1.32	1.32	79.33	2.8831	2.8883	0.0052	65.6	65.6			
	17-Jun-10	Fine	0.3E	28	564490	564590	60.0	40	40	1.32	1.32	1.32	79.33	2.8732	2.8794	0.0062	78.2	78.2			
		Fine	0.3E	28	564590	564690	60.0	40	40	1.32	1.32	1.32	79.33	2.8296	2.8351	0.0055	69.3	69.3			
		Fine	0.3E	28	564690	564790	60.0	40	40	1.32	1.32	1.32	79.33	2.8881	2.8933	0.0052	65.6	65.6			
23-Jun-10	Cloudy	0.3E	29	564790	564890	60.0	40	40	1.32	1.32	1.32	79.33	2.8652	2.8723	0.0071	89.5	89.5				
	Cloudy	0.3E	29	564890	564990	60.0	40	40	1.32	1.32	1.32	79.33	2.8619	2.8678	0.0059	71.9	71.9				
	Cloudy	0.3E	29	564990	565090	60.0	40	40	1.32	1.32	1.32	79.33	2.8691	2.8756	0.0065	81.9	81.9				
29-Jun-10	Sunny	0.2E	30	565090	565190	60.0	40	40	1.32	1.32	1.32	79.33	2.8294	2.8367	0.0073	92.0	92.0				
	Sunny	0.2E	30	565190	565290	60.0	40	40	1.32	1.32	1.32	79.33	2.8693	2.8798	0.0105	132.4	132.4				
	Sunny	0.2E	30	565290	565390	60.0	40	40	1.32	1.32	1.32	79.33	2.8836	2.8902	0.0066	83.2	83.2				
Long Beach Gardens - Outfall (ASR8)	01-Jun-10	Fine	1.0E	27	557734	557834	60.0	40	40	1.24	1.24	1.24	74.12	2.8793	2.8849	0.0056	75.8	75.8	336.6/500	Crane Operation and Excavation work	Traffic
		Fine	1.0E	27	557834	557934	60.0	40	40	1.24	1.24	1.24	74.12	2.8458	2.8541	0.0083	246.9	246.9			
		Fine	1.0E	27	557934	558034	60.0	40	40	1.24	1.24	1.24	74.12	2.8210	2.8357	0.0147	198.3	198.3			
	07-Jun-10	Sunny	0.5E	28	558034	558134	60.0	40	40	1.24	1.24	1.24	74.12	2.8511	2.8625	0.0114	153.8	153.8			
		Sunny	0.5E	28	558134	558234	60.0	40	40	1.24	1.24	1.24	74.12	2.8441	2.8519	0.0078	105.2	105.2			
		Sunny	0.5E	28	558234	558334	60.0	40	40	1.24	1.24	1.24	74.12	2.8867	2.8944	0.0077	103.9	103.9			
	11-Jun-10	Fine	0.4E	27	558334	558434	60.0	40	40	1.24	1.24	1.24	74.12	2.9144	2.9239	0.0095	128.2	128.2			
		Fine	0.4E	27	558434	558534	60.0	40	40	1.24	1.24	1.24	74.12	2.8986	2.9141	0.0155	208.1	208.1			
		Fine	0.4E	27	558534	558634	60.0	40	40	1.24	1.24	1.24	74.12	2.8905	2.8985	0.0080	107.9	107.9			
	17-Jun-10	Fine	0.5E	28	558634	558734	60.0	40	40	1.24	1.24	1.24	74.12	2.8831	2.8962	0.0131	176.7	176.7			
		Fine	0.5E	28	558734	558834	60.0	40	40	1.24	1.24	1.24	74.12	2.8763	2.8829	0.0066	89.0	89.0			
		Fine	0.5E	28	558834	558934	60.0	40	40	1.24	1.24	1.24	74.12	2.9118	2.9191	0.0073	98.5	98.5			
23-Jun-10	Cloudy	0.4E	29	558934	559034	60.0	40	40	1.24	1.24	1.24	74.12	2.8840	2.8918	0.0078	105.2	105.2				
	Cloudy	0.4E	29	559034	559134	60.0	40	40	1.24	1.24	1.24	74.12	2.9095	2.9151	0.0056	75.6	75.6				
	Cloudy	0.4E	29	559134	559234	60.0	40	40	1.24	1.24	1.24	74.12	2.8792	2.8835	0.0043	58.0	58.0				
29-Jun-10	Sunny	0.5E	30	559234	559334	60.0	40	40	1.24	1.24	1.24	74.12	2.8215	2.8305	0.0090	121.4	121.4				
	Sunny	0.5E	30	559334	559434	60.0	40	40	1.24	1.24	1.24	74.12	2.8697	2.8769	0.0072	97.1	97.1				
	Sunny	0.5E	30	559434	559534	60.0	40	40	1.24	1.24	1.24	74.12	2.8610	2.8658	0.0048	64.8	64.8				
Greenview Terrace - Outfall (ASR9)	01-Jun-10	Fine	1.0E	27	550480	550580	60.0	40	40	1.24	1.24	1.24	74.21	2.9002	2.9072	0.0070	94.3	94.3	329.2/500	Crane Operation and Excavation work	Traffic
		Fine	1.0E	27	550580	550680	60.0	40	40	1.24	1.24	1.24	74.21	2.8578	2.8691	0.0113	152.3	152.3			
		Fine	1.0E	27	550680	550780	60.0	40	40	1.24	1.24	1.24	74.21	2.8582	2.8710	0.0128	172.5	172.5			
	07-Jun-10	Sunny	0.8E	28	550780	550880	60.0	40	40	1.24	1.24	1.24	74.21	2.8432	2.8509	0.0077	103.8	103.8			
		Sunny	0.8E	28	550880	550980	60.0	40	40	1.24	1.24	1.24	74.21	2.8592	2.8663	0.0071	95.7	95.7			

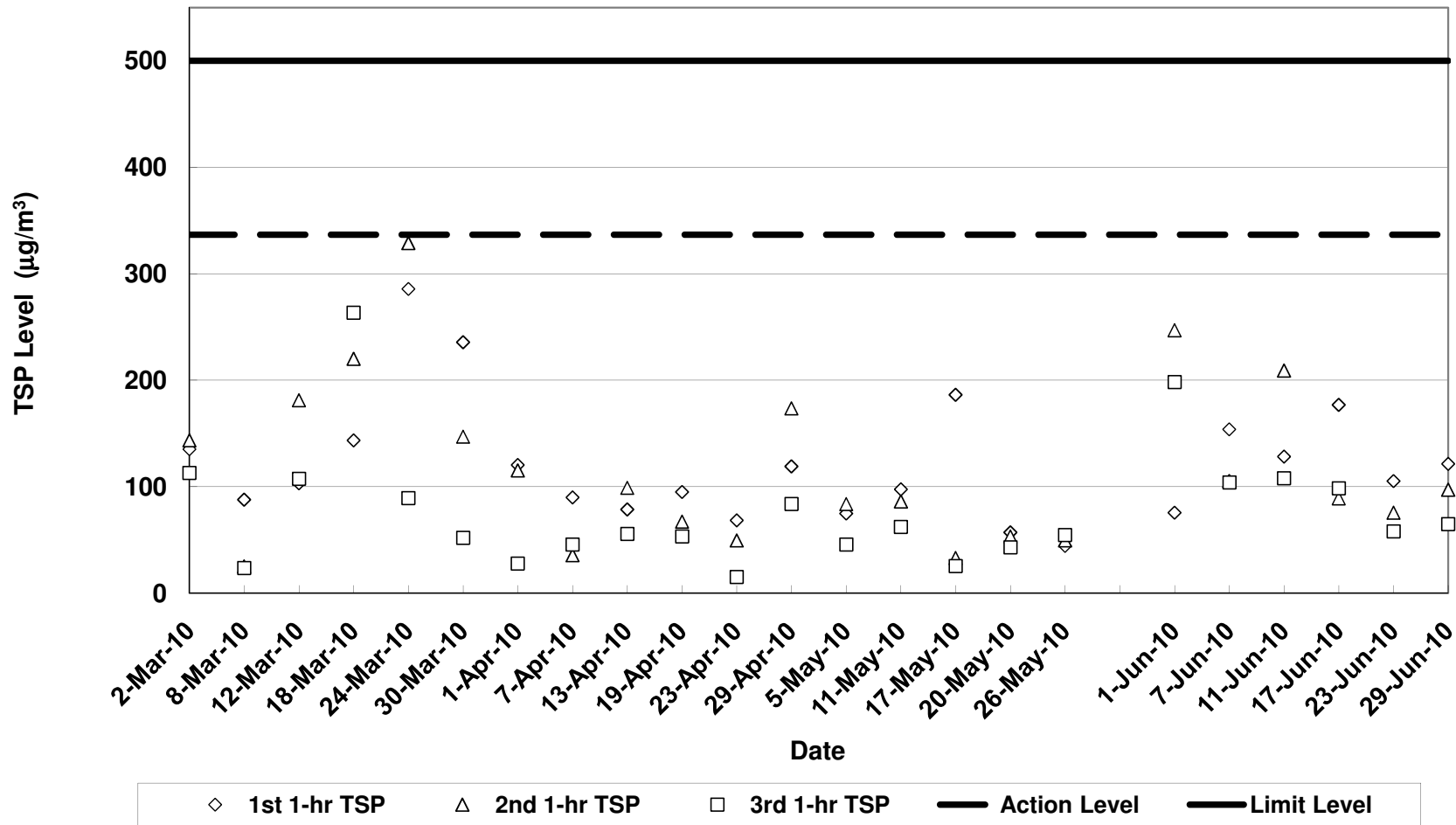
**Contract No. DC/2007/12 - Design and Construction of Tsuen Wan Drainage Tunnel
 Air Quality Monitoring (1-hr TSP) Results at Sik Sik Yuen Ho Fung College - Intake (ASR1)
 Mar-10 to Jun-10**



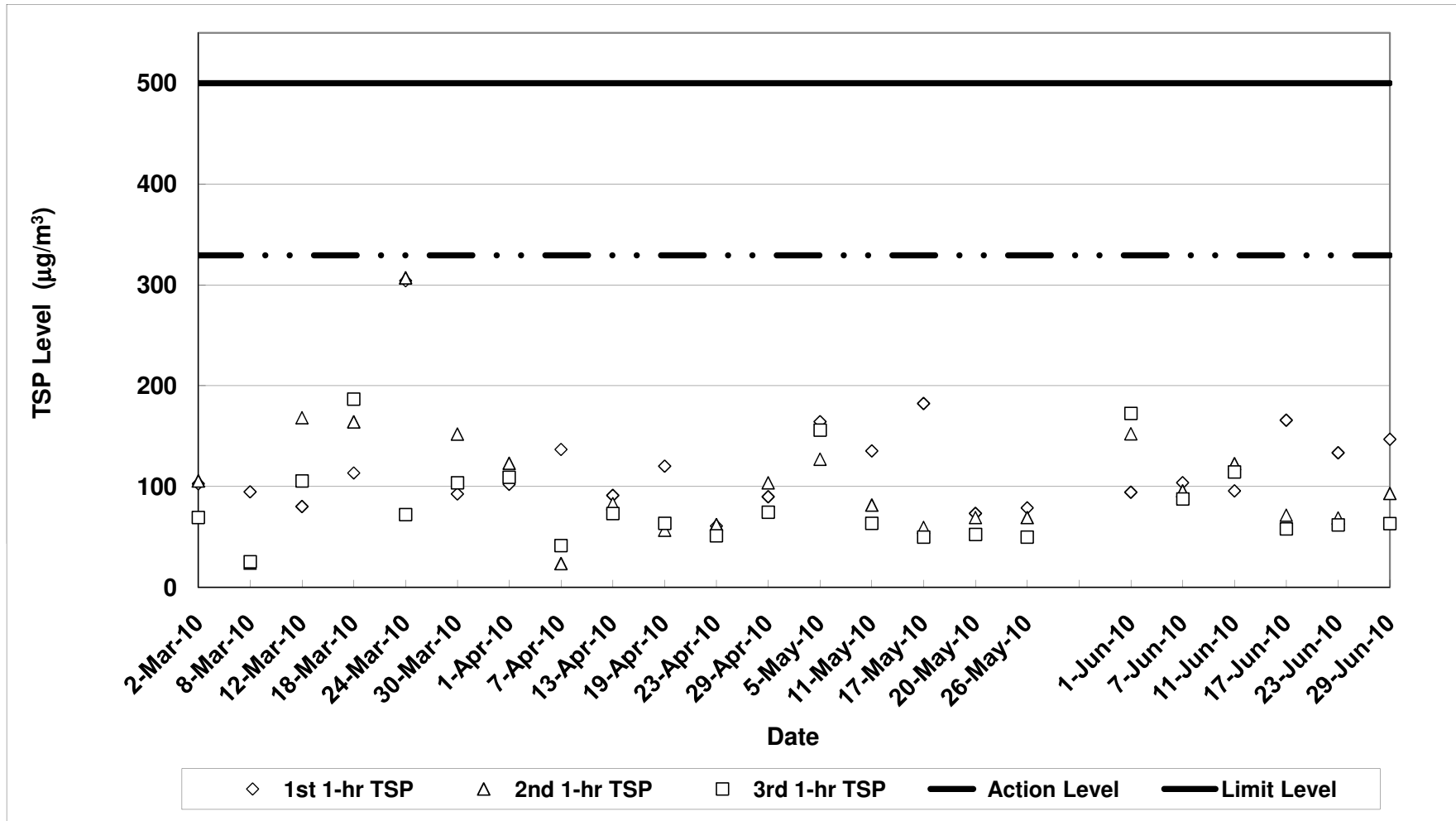
**Contract No. DC/2007/12 - Design and Construction of Tsuen Wan Drainage Tunnel
 Air Quality Monitoring (1-hr TSP) Results at Hong Hoi Chee Hong Temple - Intake (ASR3)
 Mar-10 to Jun-10**



**Contract No. DC/2007/12 - Design and Construction of Tsuen Wan Drainage Tunnel
 Air Quality Monitoring (1-hr TSP) Results at Long Beach Gardens - Outfall (ASR8)
 Mar-10 to Jun-10**



**Contract No. DC/2007/12 - Design and Construction of Tsuen Wan Drainage Tunnel
Air Quality Monitoring (1-hr TSP) Results at Greenview Terrance - Outfall (ASR9)
Mar-10 to Jun-10**



Contract No. DC/2007/12 - Design and Construction of Tsuen Wan Drainage Tunnel

Noise Impact Monitoring Results

Monitoring Locations	Date	Weather Conditions	Temperature (°C)	Wind Speed (m/s)	Wind Direction	Start Time	End Time	BL ¹ dB(A)	LL ² dB(A)	L _{eq} (30min) dB(A)	L ₁₀ (30min) dB(A)	L ₉₀ (30min) dB(A)	CNL ³ dB(A)	Observation / Site Condition	Remark
Sik Sik Yuen Ho Fung College NSR 1	01-Jun-10	Fine	24	0.5	E	15:16	15:46	66.1	70	64.9	67.1	60.5	-	Steel bending and erection	Traffic noise
	07-Jun-10	Sunny	26	0.5	E	16:05	16:35		65	63.0	65.3	59.2	-	Steel bending and erection	Traffic noise
	17-Jun-10	Fine	28	0.3	E	16:44	17:14		65	63.2	65.9	60.9	-	Steel bending and erection	Traffic noise
	23-Jun-10	Cloudy	29	0.3	E	16:13	16:43		70	63.9	66.9	58.7	-	Steel bending and erection	Aircraft & traffic noise
	29-Jun-10	Sunny	30	0.2	E	15:06	15:36		70	63.4	65.8	59.8	-	Steel bending and erection	Aircraft & traffic noise
Hong Hoi Chee Hong Temple NSR 3	01-Jun-10	Fine	24	0.8	E	14:35	15:05	57.9	75	64.5	66.5	61.6	-	Breaking	Traffic noise
	07-Jun-10	Sunny	26	0.2	E	15:22	15:52		75	72.8	75.5	67.9	-	Breaking	Traffic noise
	17-Jun-10	Fine	28	0.3	E	16:05	16:35		75	66.9	68.4	64.9	-	Breaking	Traffic noise
	23-Jun-10	Cloudy	29	0.3	E	15:28	15:58		75	67.9	69.3	66.5	-	Breaking	Aircraft & traffic noise
	29-Jun-10	Sunny	30	0.2	E	14:25	14:55		75	68.3	70.0	65.7	-	Breaking	Aircraft & traffic noise
Squatters NSR 6	01-Jun-10	Fine	24	0.3	E	13:33	14:03	61.2	75	68.0	70.5	63.6	-	Excavation work & breaking	Bird noise
	07-Jun-10	Sunny	26	0.2	E	11:20	11:50		75	67.7	70.1	63.2	-	Breaking, excavation work	Bird noise
	17-Jun-10	Fine	28	0.2	E	11:05	11:35		75	58.1	61.1	52.4	-	Excavation work	Aircraft & bird noise
	23-Jun-10	Cloudy	29	0.2	E	10:10	10:40		75	64.9	67.0	61.2	-	Breaking, excavation work	Bird noise
	29-Jun-10	Sunny	30	0.3	E	13:33	14:03		75	56.7	59.3	49.2	-	Excavation work	Aircraft & bird noise
Long Beach Gardens NSR 8	01-Jun-10	Fine	24	1.0	E	10:18	10:48	60.9	75	64.8	66.8	62.4	-	Crane Operation & Excavation Work	Traffic noise
	07-Jun-10	Sunny	26	0.5	E	14:30	15:00		75	63.8	65.1	62.6	-	Crane Operation & Excavation Work	Traffic noise
	17-Jun-10	Fine	28	0.5	E	14:55	15:25		75	63.3	64.8	60.7	-	Crane Operation & Excavation Work	Traffic noise
	23-Jun-10	Cloudy	29	0.4	E	14:32	15:02		75	64.9	66.6	62.5	-	Crane Operation & Excavation Work	Aircraft & traffic noise
	29-Jun-10	Sunny	30	0.5	E	10:18	10:48		75	62.2	63.9	60.5	-	Crane Operation & Excavation Work	Traffic noise
Greenview Terrace NSR 9	01-Jun-10	Fine	24	1.0	E	11:10	11:40	59.7	75	64.0	66.0	62.3	-	Crane Operation & Excavation Work	Traffic noise
	07-Jun-10	Sunny	26	0.8	E	13:50	14:20		75	68.4	70.4	65.5	-	Crane Operation & Excavation Work	Traffic noise
	17-Jun-10	Fine	28	0.5	E	14:10	14:40		75	63.9	65.9	61.2	-	Crane Operation & Excavation Work	Traffic noise
	23-Jun-10	Cloudy	29	0.3	E	13:50	14:20		75	68.1	69.6	66.0	-	Crane Operation & Excavation Work	Aircraft & traffic noise
	29-Jun-10	Sunny	30	0.5	E	11:10	11:40		75	65.0	66.3	63.0	-	Crane Operation & Excavation Work	Traffic noise

1: Baseline Noise Level

2: Limit Level

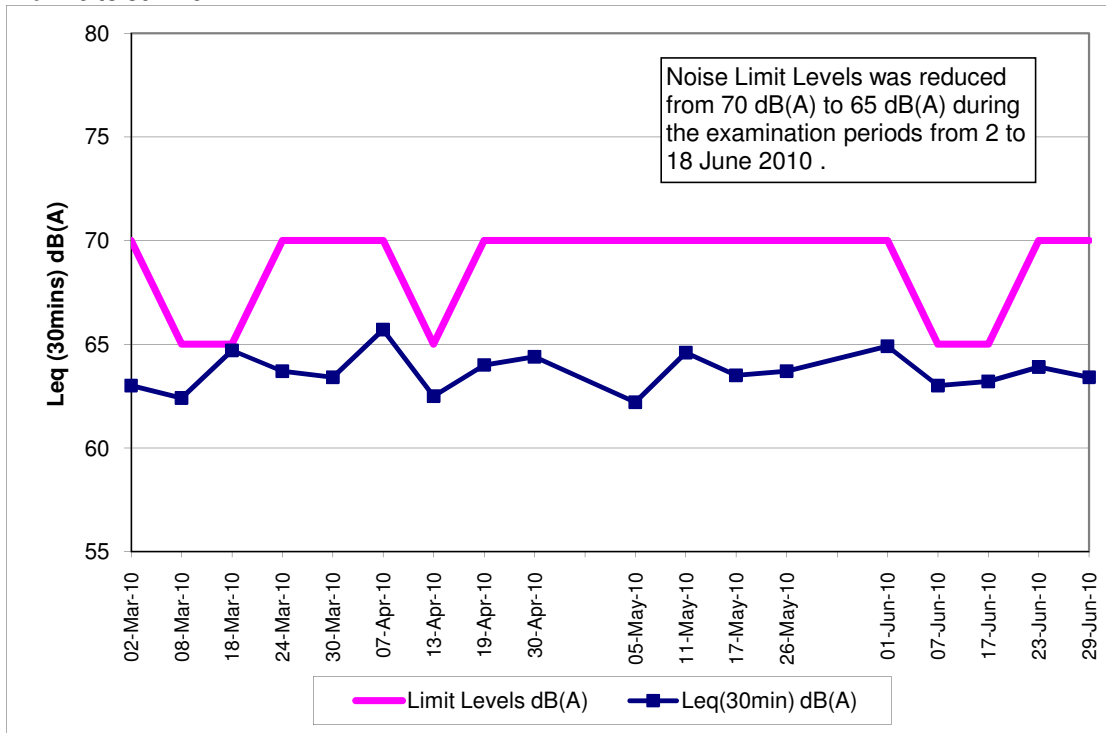
3: Corrected Noise Level

Note:

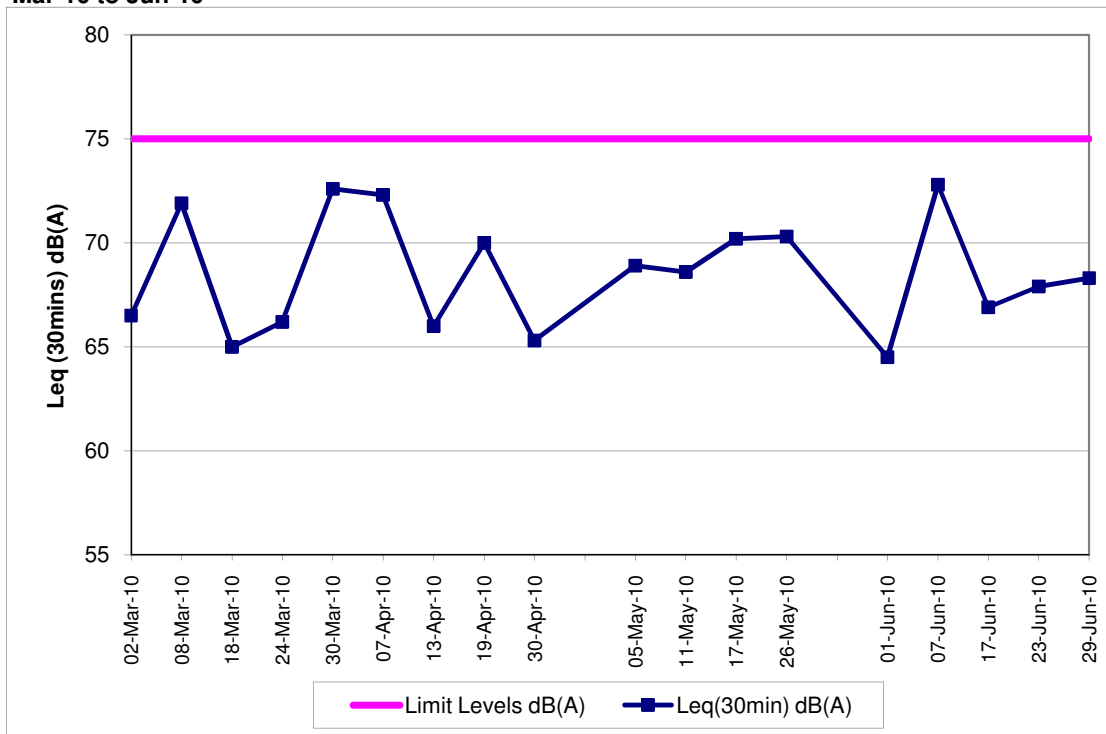
The limit level of NSR1 is 65dB(A) during school examination period.

Red Bold indicates an exceedance of Limit Level

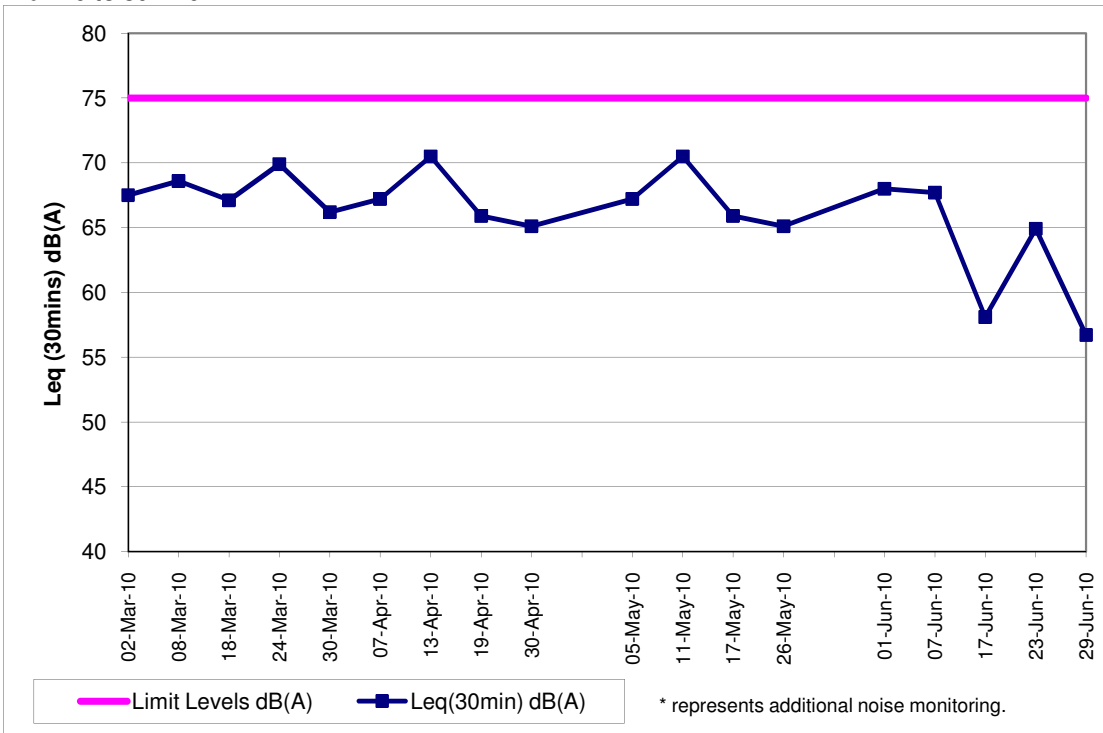
**Contract No. DC/2007/12 - Design and Construction of Tsuen Wan Drainage Tunnel
Noise Monitoring Results at Sik Sik Yuen Ho Fung College (NSR 1)
Mar-10 to Jun-10**



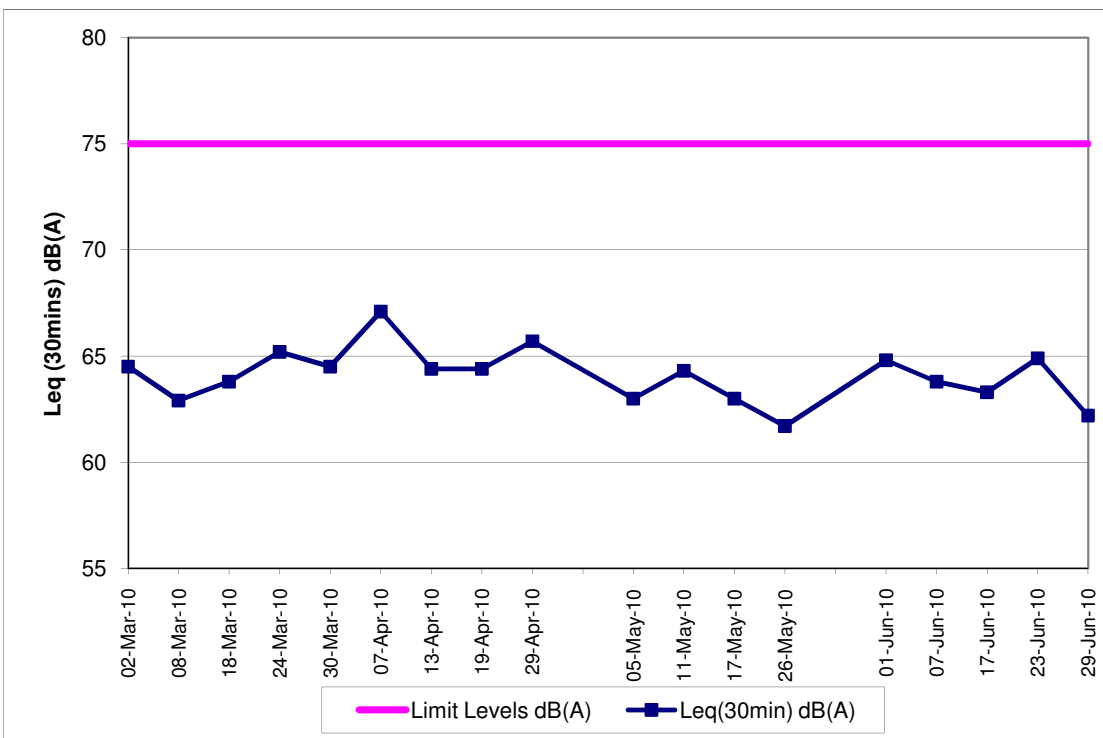
**Contract No. DC/2007/12 - Design and Construction of Tsuen Wan Drainage Tunnel
Noise Monitoring Results at Hong Hoi Chee Hong Temple (NSR 3)
Mar-10 to Jun-10**



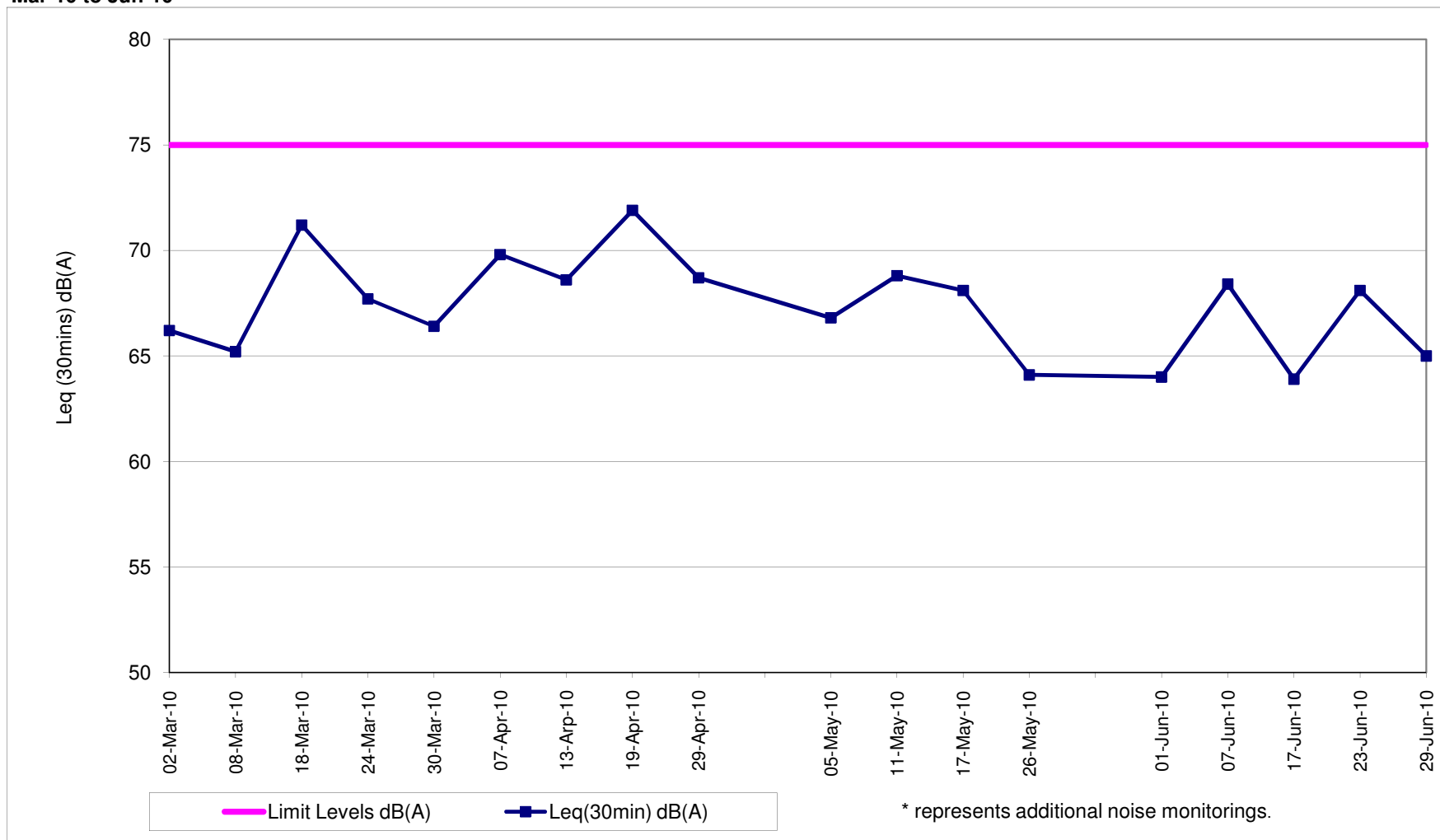
**Contract No. DC/2007/12 - Design and Construction of Tsuen Wan Drainage Tunnel
Noise Monitoring Results at Squatters (NSR 6)
Mar-10 to Jun-10**



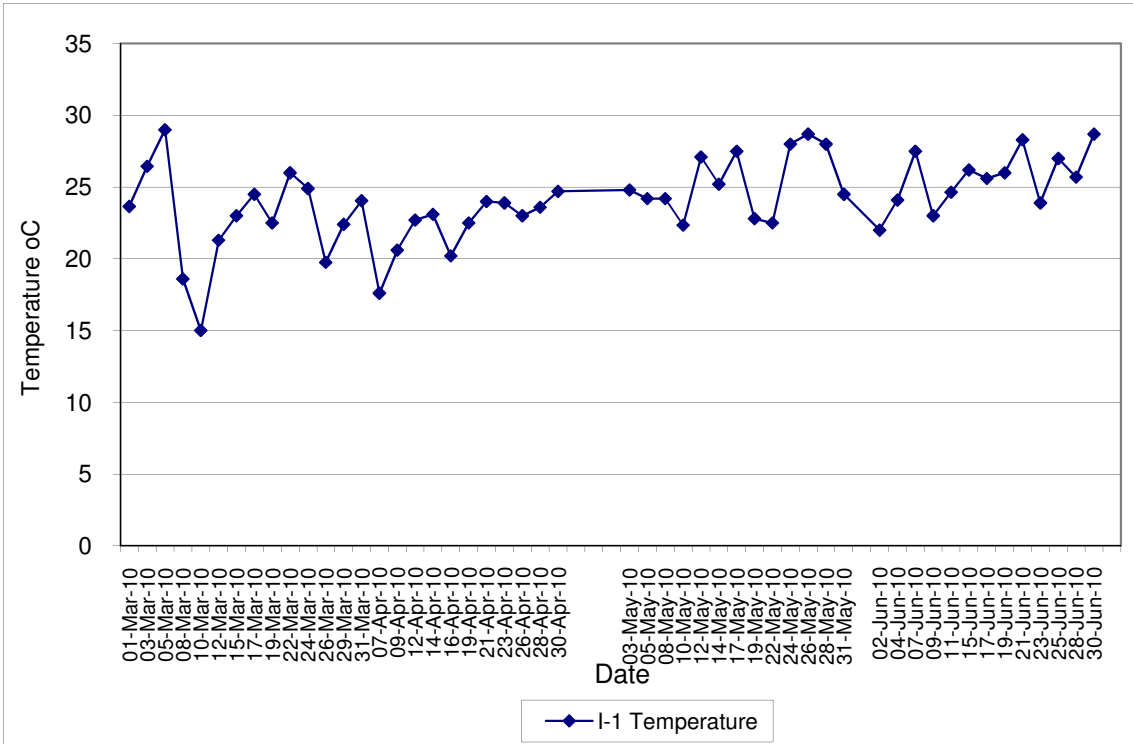
**Contract No. DC/2007/12 - Design and Construction of Tsuen Wan Drainage Tunnel
Noise Monitoring Results at Long Beach Gardens (NSR 8)
Mar-10 to Jun-10**



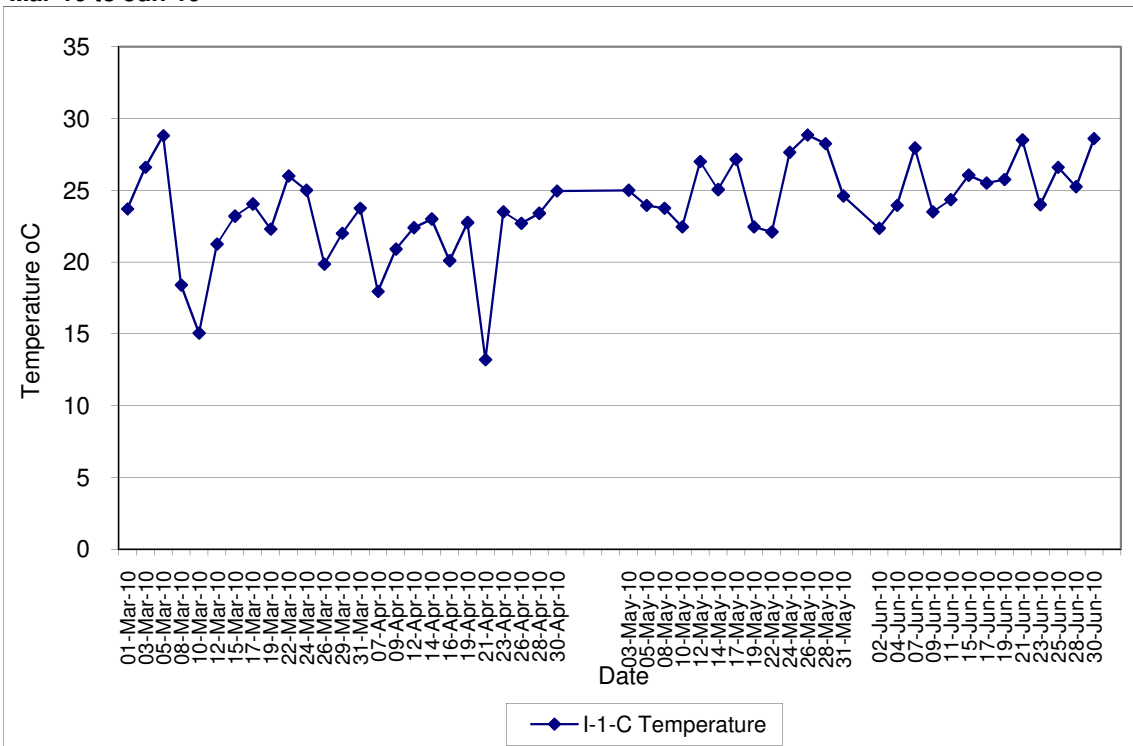
Contract No. DC/2007/12 - Design and Construction of Tsuen Wan Drainage Tunnel
Noise Monitoring Results at Greenview Terrace (NSR 9)
Mar-10 to Jun-10



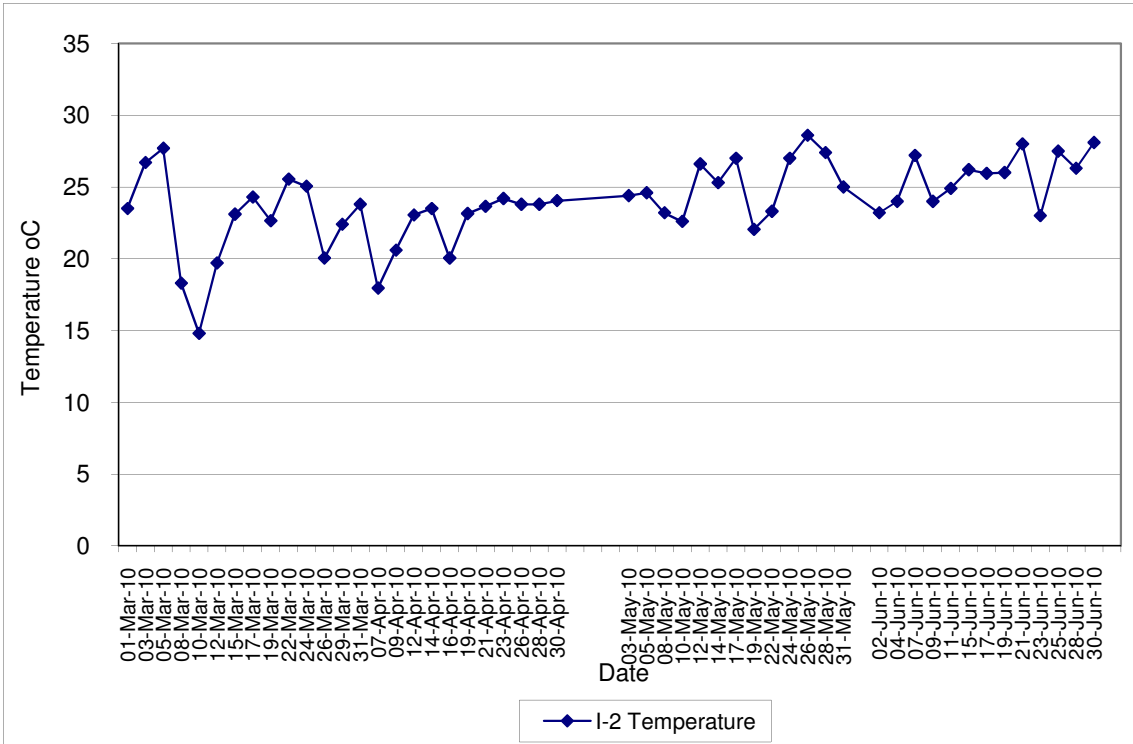
**Contract No. DC/2007/12 - Design and Construction of Tsuen Wan Drainage Tunnel
 Water Quality Results at Sik Sik Yuen Ho Fung College (I-1)
 Mar-10 to Jun-10**



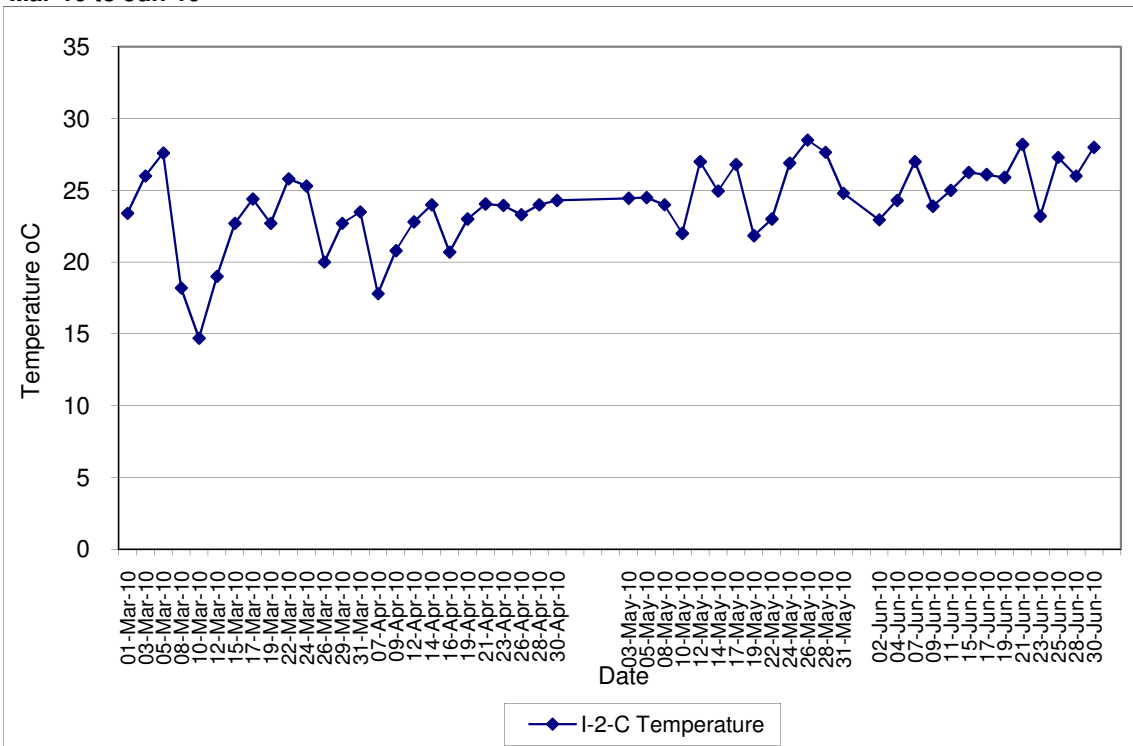
**Contract No. DC/2007/12 - Design and Construction of Tsuen Wan Drainage Tunnel
 Water Quality Results at Sik Sik Yuen Ho Fung College (I-1-C)
 Mar-10 to Jun-10**



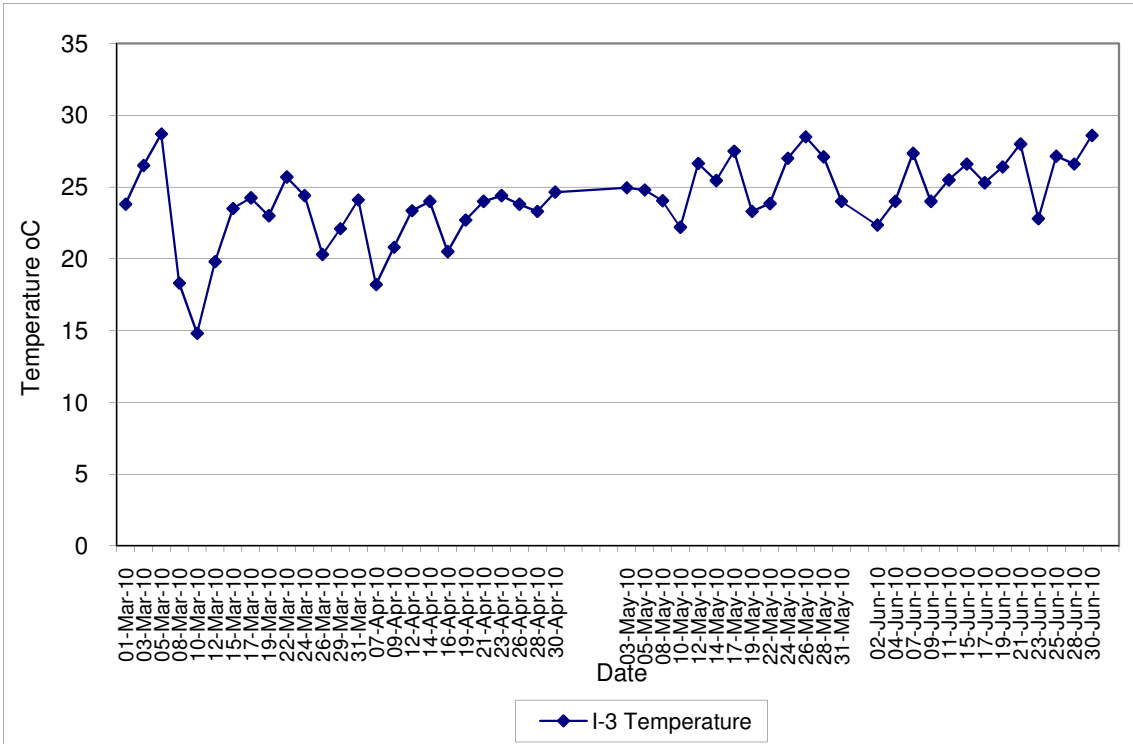
**Contract No. DC/2007/12 - Design and Construction of Tsuen Wan Drainage Tunnel
 Water Quality Results at Hong Hoi Chee Hong Temple (I-2)
 Mar-10 to Jun-10**



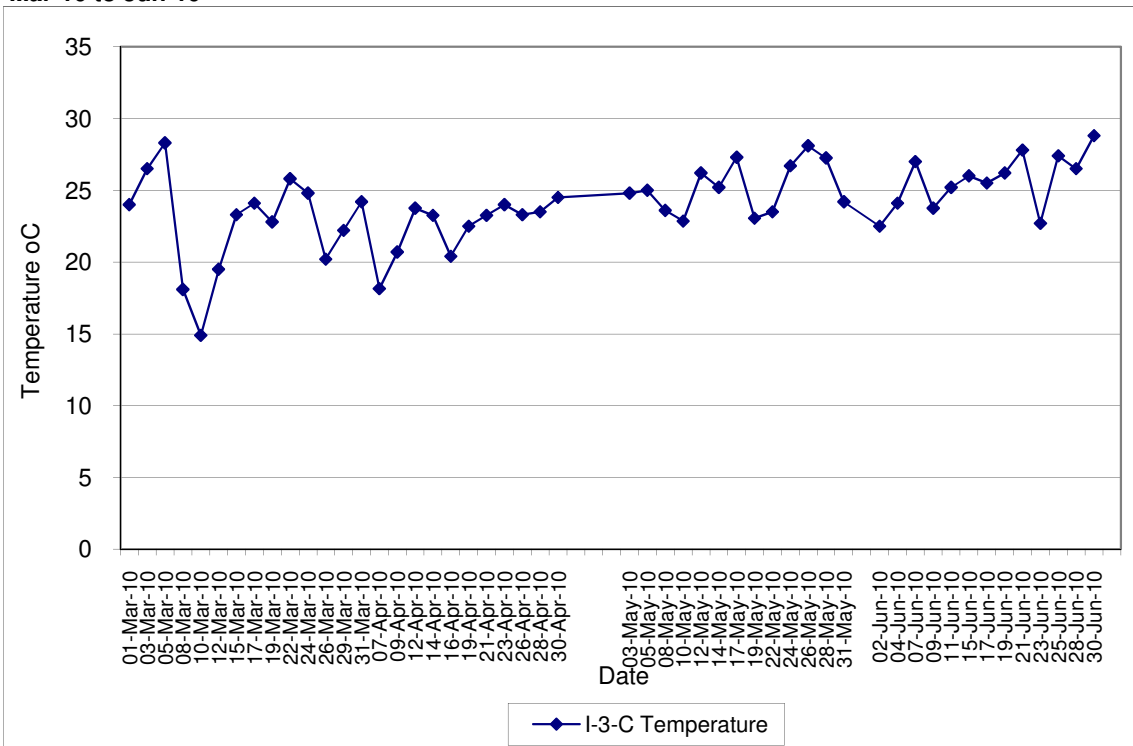
**Contract No. DC/2007/12 - Design and Construction of Tsuen Wan Drainage Tunnel
 Water Quality Results at Hong Hoi Chee Hong Temple (I-2-C)
 Mar-10 to Jun-10**



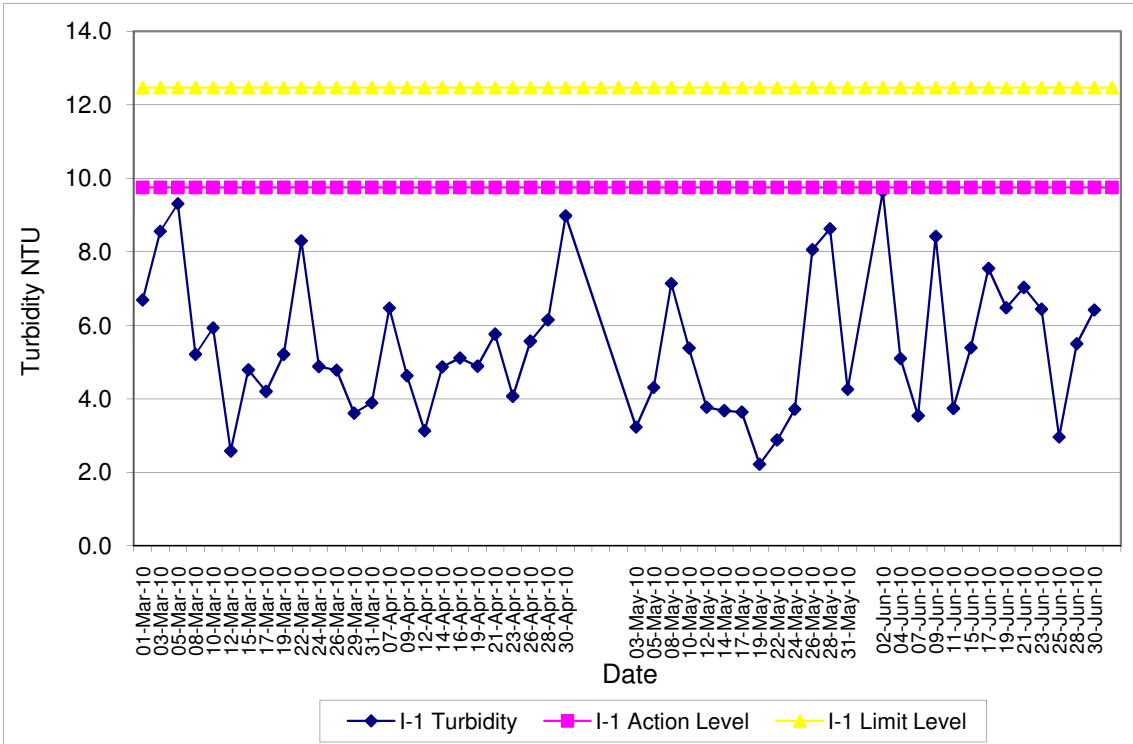
**Contract No. DC/2007/12 - Design and Construction of Tsuen Wan Drainage Tunnel
 Water Quality Results at Squatters (I-3)
 Mar-10 to Jun-10**



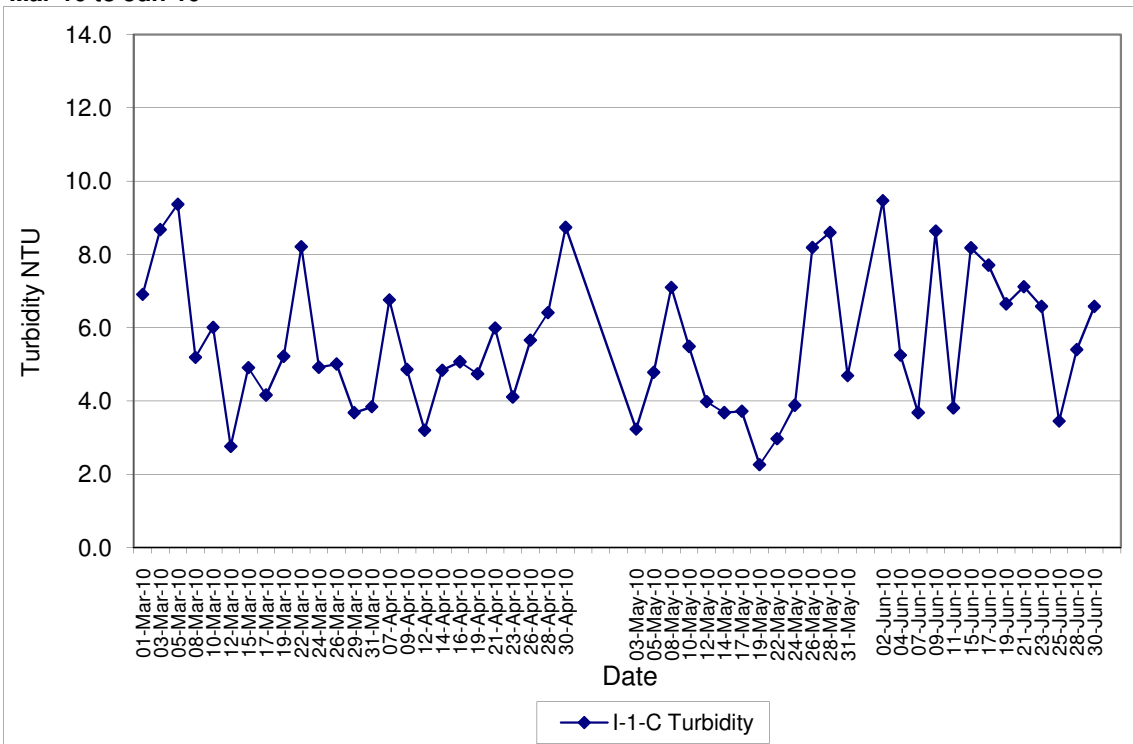
**Contract No. DC/2007/12 - Design and Construction of Tsuen Wan Drainage Tunnel
 Water Quality Results at Squatters (I-3-C)
 Mar-10 to Jun-10**



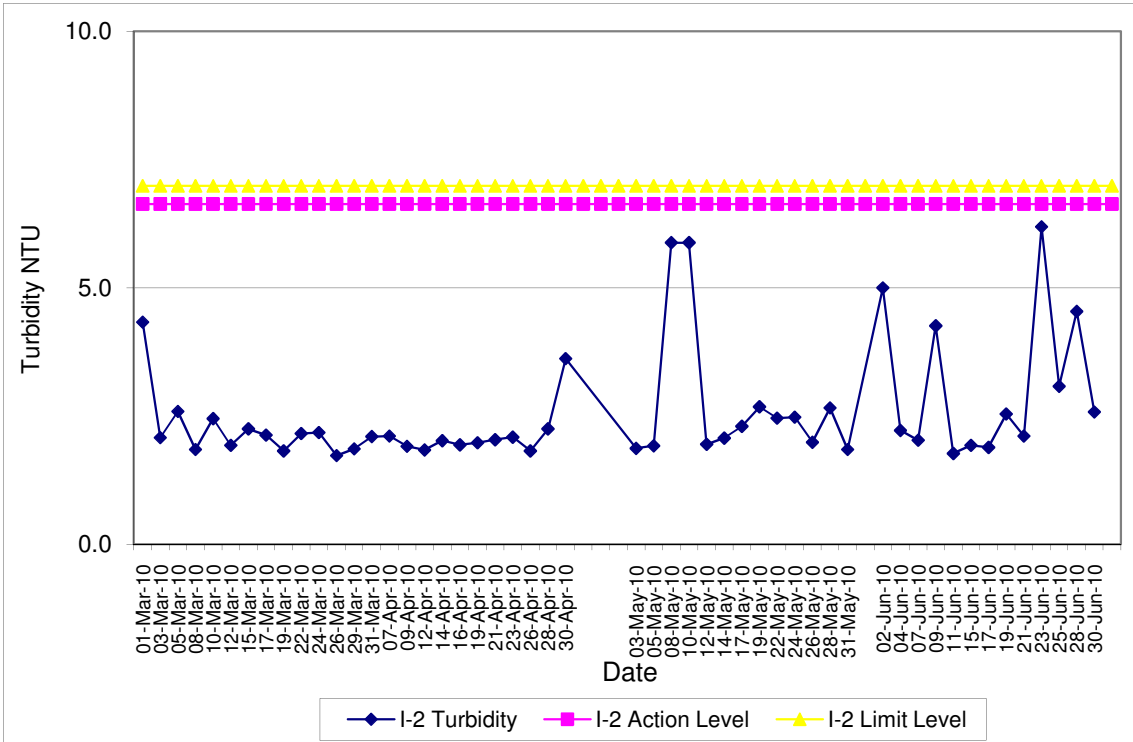
Contract No. DC/2007/12 - Design and Construction of Tsuen Wan Drainage Tunnel
Water Quality Results at Sik Sik Yuen Ho Fung College (I-1)
Mar-10 to Jun-10



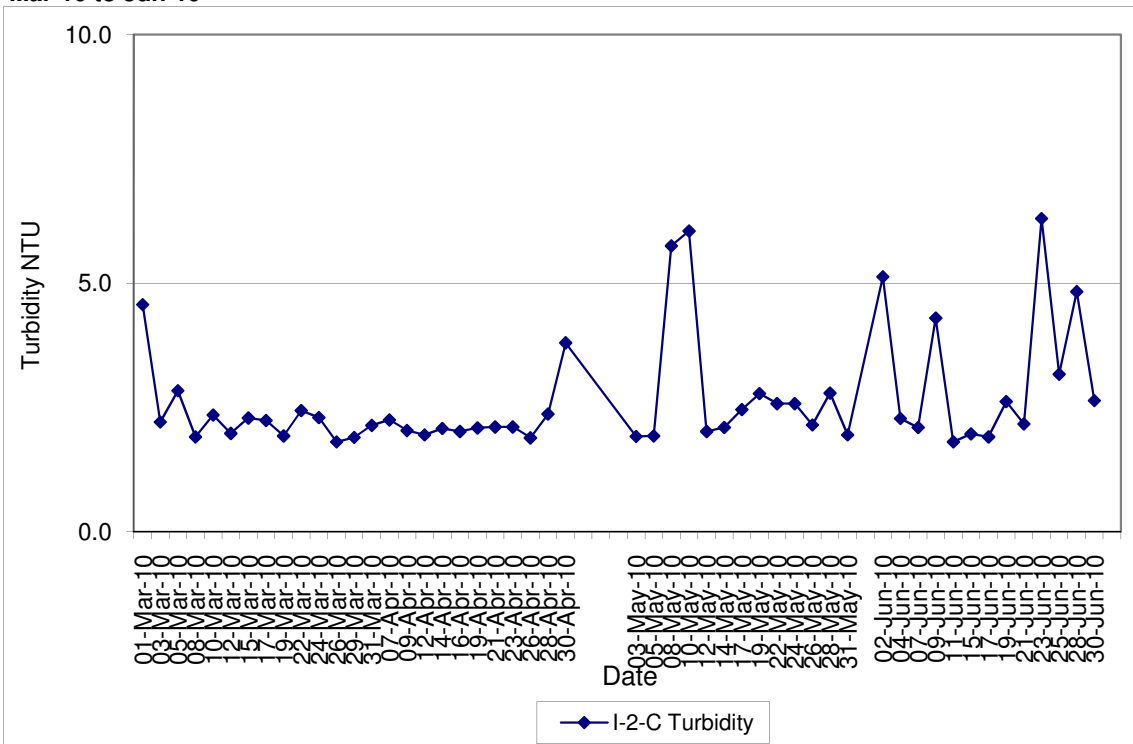
Contract No. DC/2007/12 - Design and Construction of Tsuen Wan Drainage Tunnel
Water Quality Results at Sik Sik Yuen Ho Fung College (I-1-C)
Mar-10 to Jun-10



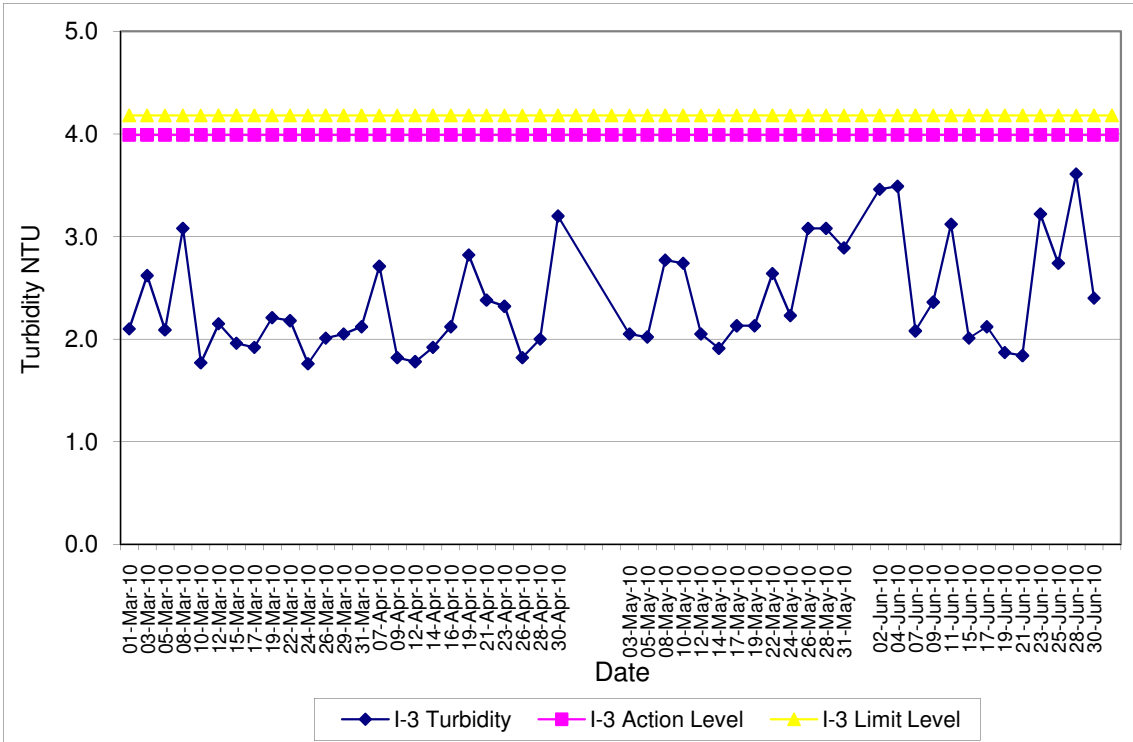
**Contract No. DC/2007/12 - Design and Construction of Tsuen Wan Drainage Tunnel
 Water Quality Results at Hong Hoi Chee Hong Temple (I-2)
 Mar-10 to Jun-10**



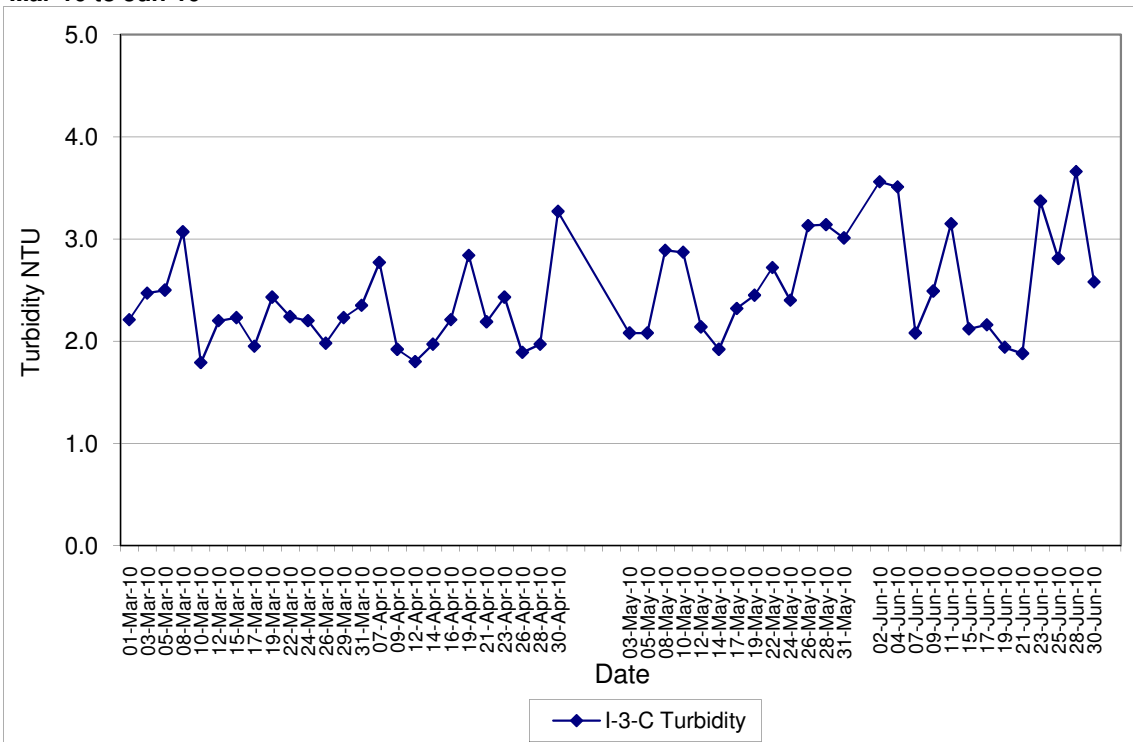
**Contract No. DC/2007/12 - Design and Construction of Tsuen Wan Drainage Tunnel
 Water Quality Results at Hong Hoi Chee Hong Temple (I-2-C)
 Mar-10 to Jun-10**



**Contract No. DC/2007/12 - Design and Construction of Tsuen Wan Drainage Tunnel
 Water Quality Results at Squatters (I-3)
 Mar-10 to Jun-10**

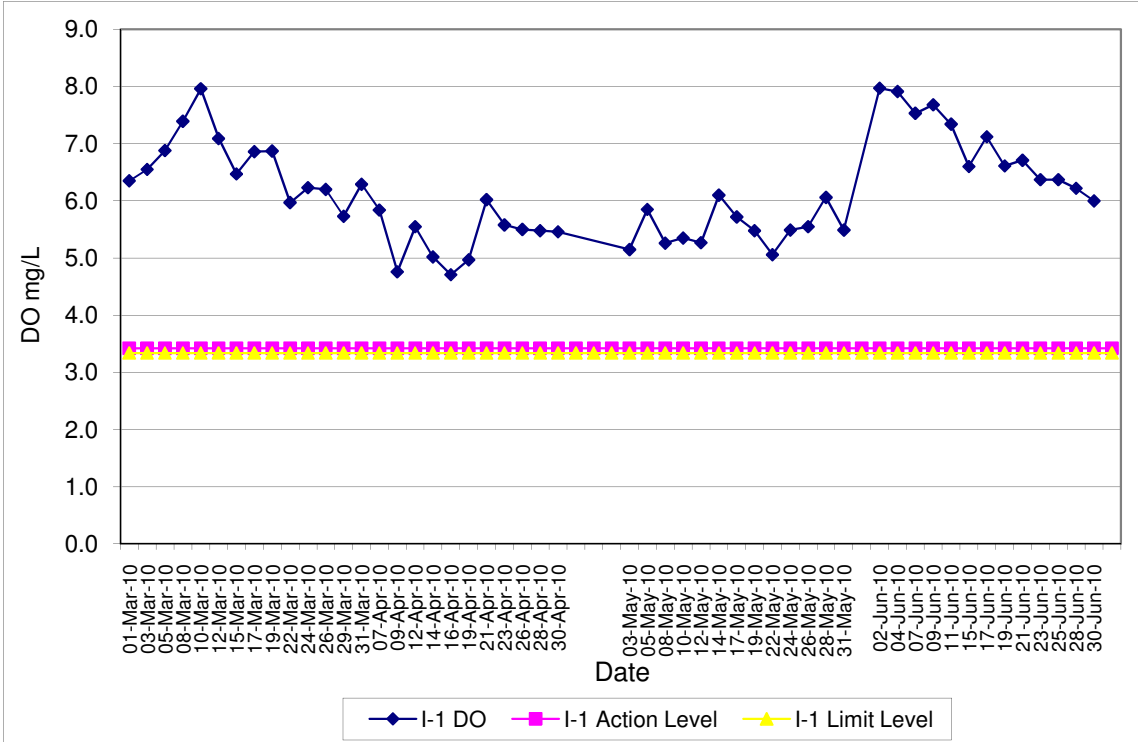


**Contract No. DC/2007/12 - Design and Construction of Tsuen Wan Drainage Tunnel
 Water Quality Results at Squatters (I-3-C)
 Mar-10 to Jun-10**

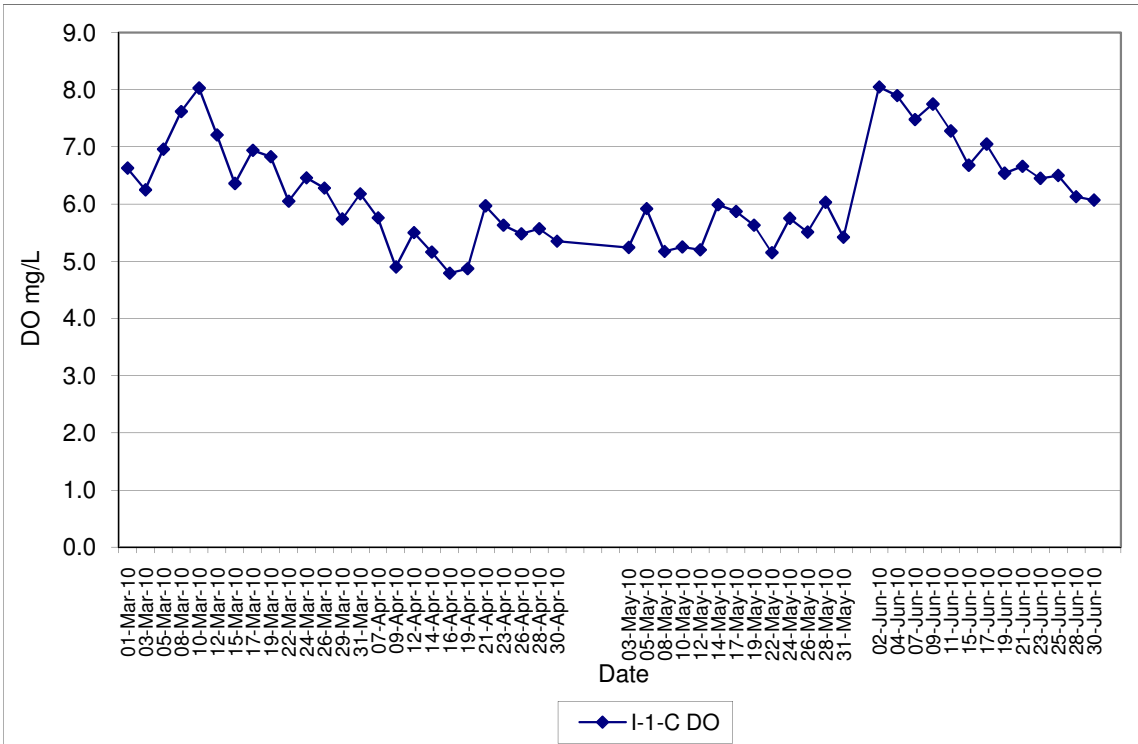


Contract No. DC/2007/12 - Design and Construction of Tsuen Wan Drainage Tunnel
Water Quality Results at Sik Sik Yuen Ho Fung College (I-1)
Mar-10 to Jun-10

Note: Exceedances of Action / Limit Levels occur when the levels of DO are below the respective limit levels.

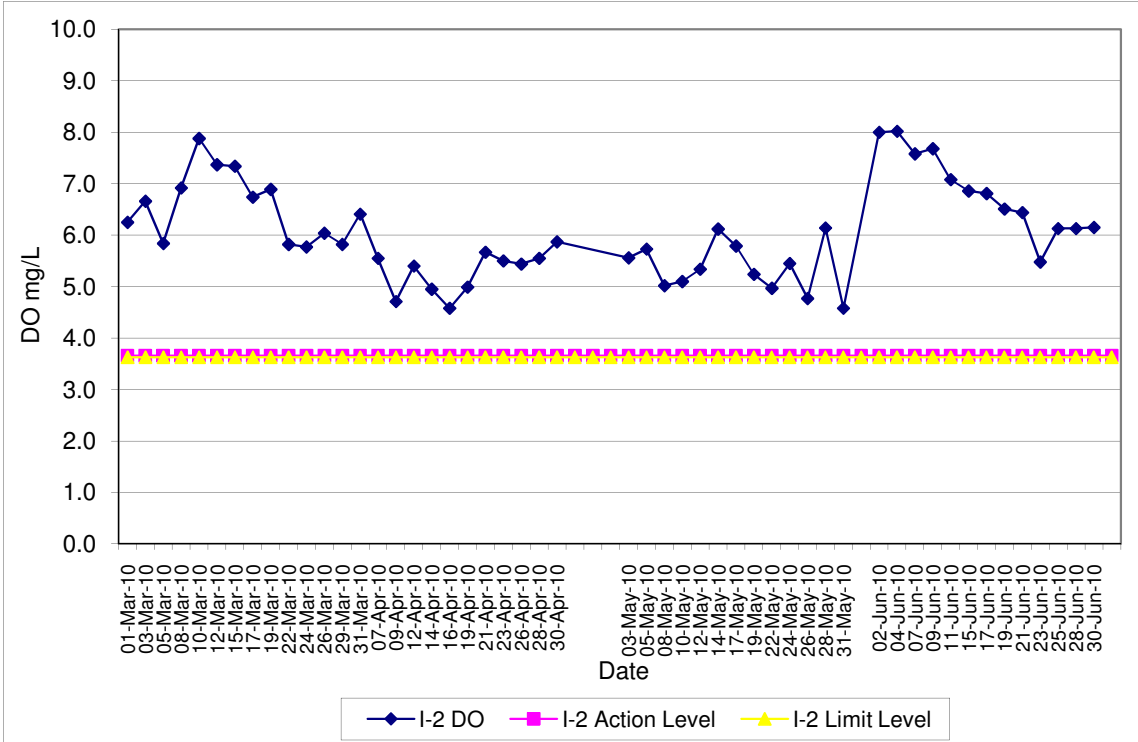


Contract No. DC/2007/12 - Design and Construction of Tsuen Wan Drainage Tunnel
Water Quality Results at Sik Sik Yuen Ho Fung College (I-1-C)
Mar-10 to Jun-10

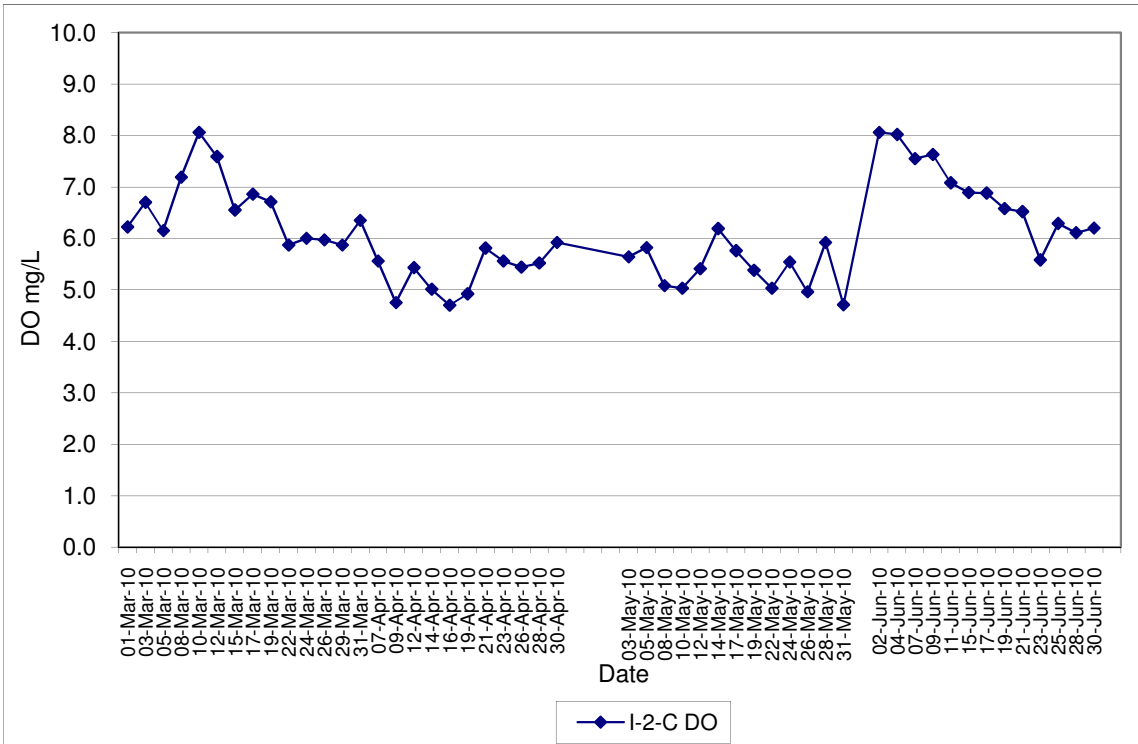


Contract No. DC/2007/12 - Design and Construction of Tsuen Wan Drainage Tunnel
Water Quality Results at Hong Hoi Chee Hong Temple (I-2)
Mar-10 to Jun-10

Note: Exceedances of Action / Limit Levels occur when the levels of DO are below the respective limit levels.

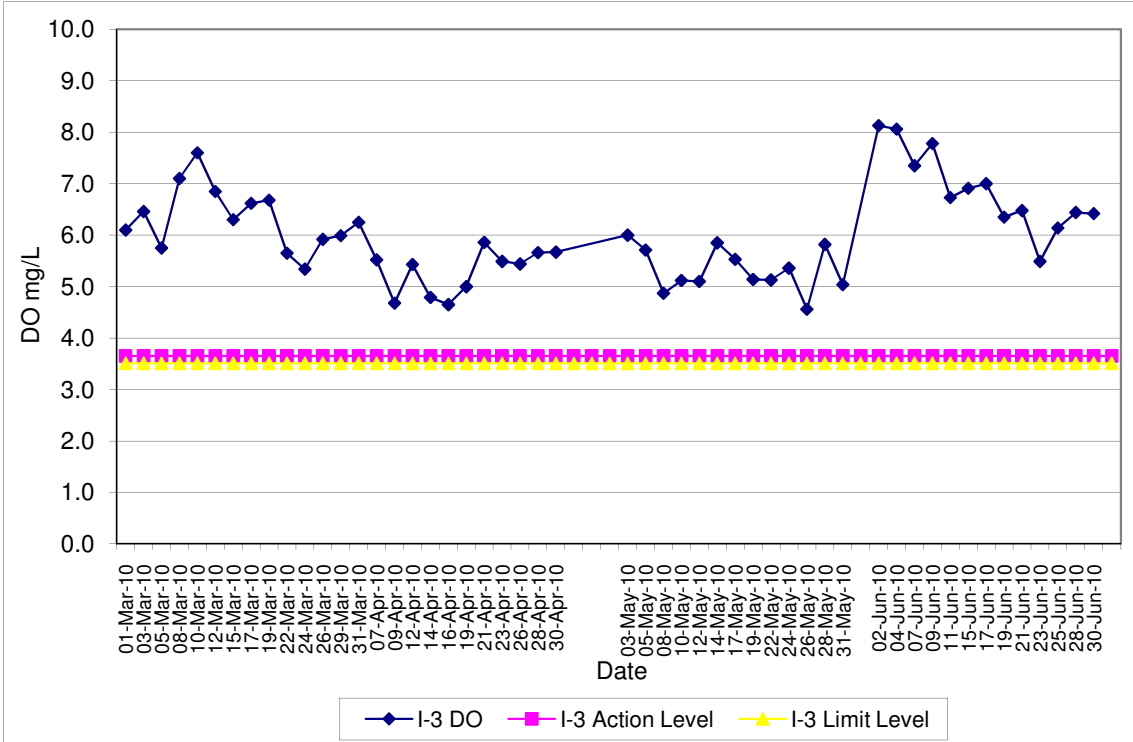


Contract No. DC/2007/12 - Design and Construction of Tsuen Wan Drainage Tunnel
Water Quality Results at Hong Hoi Chee Hong Temple (I-2-C)
Mar-10 to Jun-10

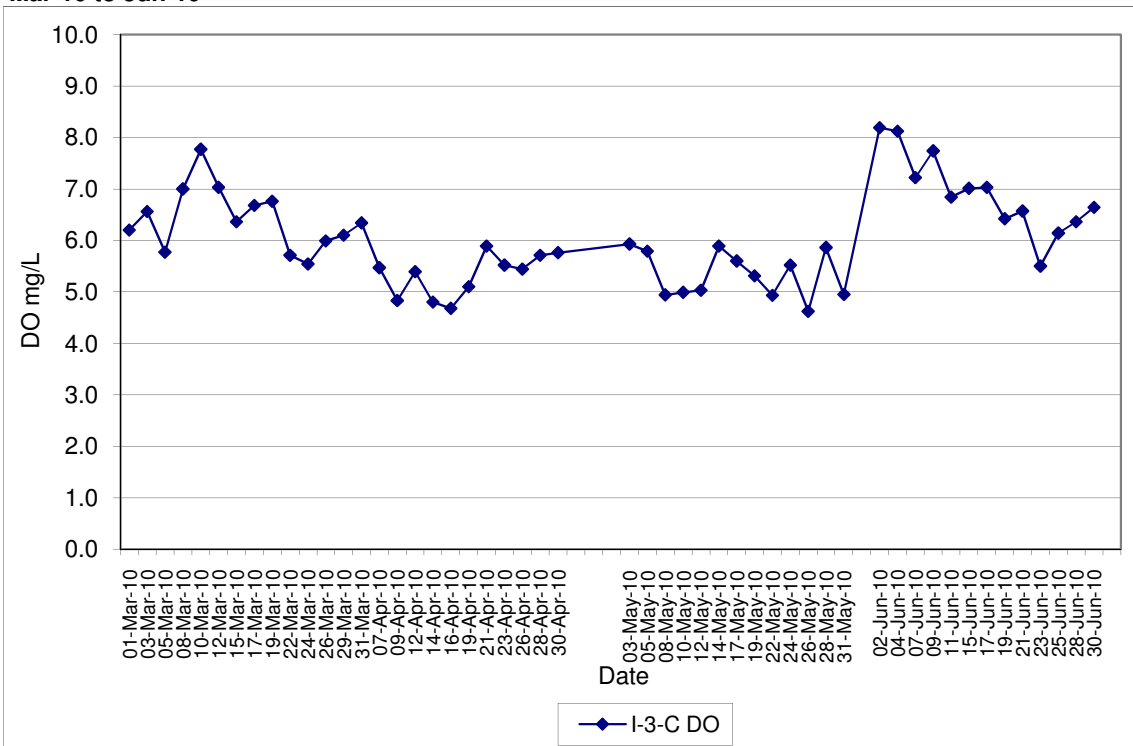


Contract No. DC/2007/12 - Design and Construction of Tsuen Wan Drainage Tunnel
Water Quality Results at Squatters (I-3)
Mar-10 to Jun-10

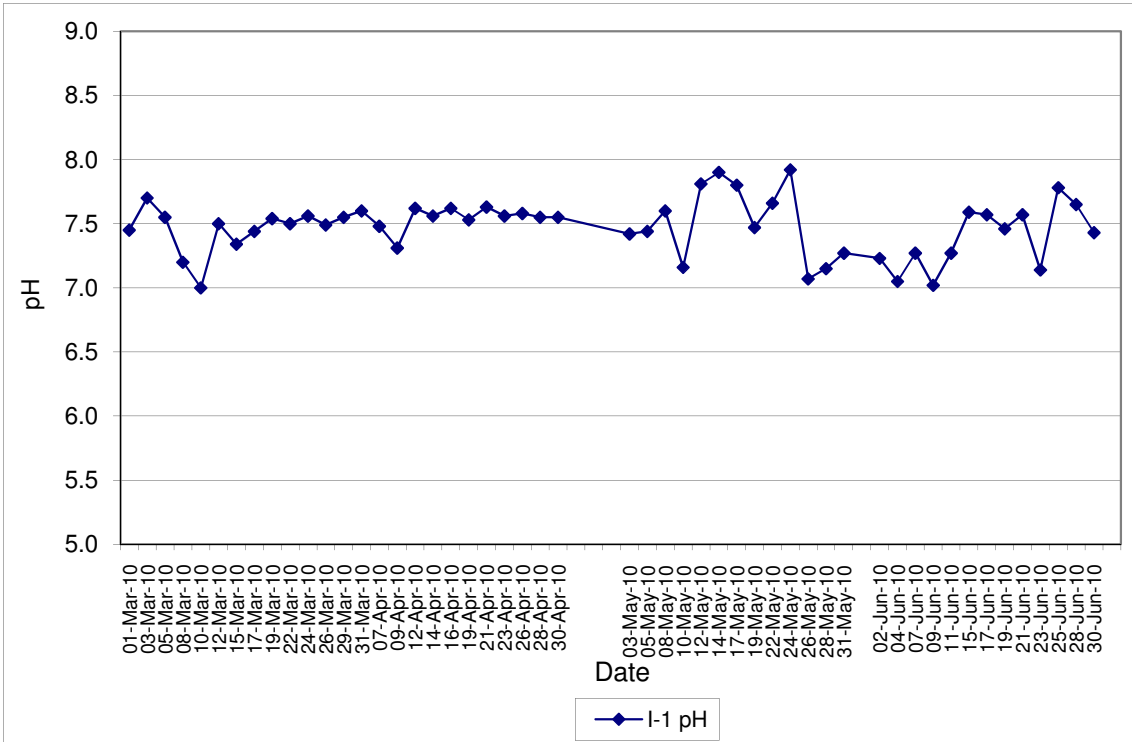
Note: Exceedances of Action / Limit Levels occur when the levels of DO are below the respective limit levels.



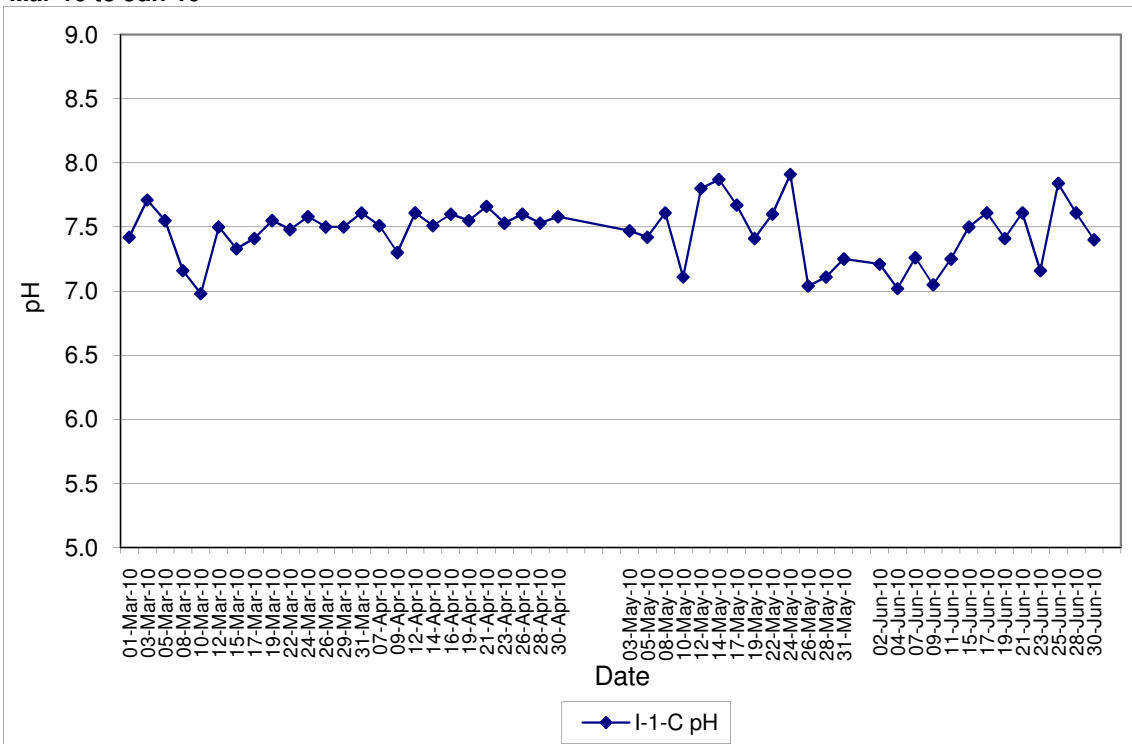
Contract No. DC/2007/12 - Design and Construction of Tsuen Wan Drainage Tunnel
Water Quality Results at Squatters (I-3-C)
Mar-10 to Jun-10



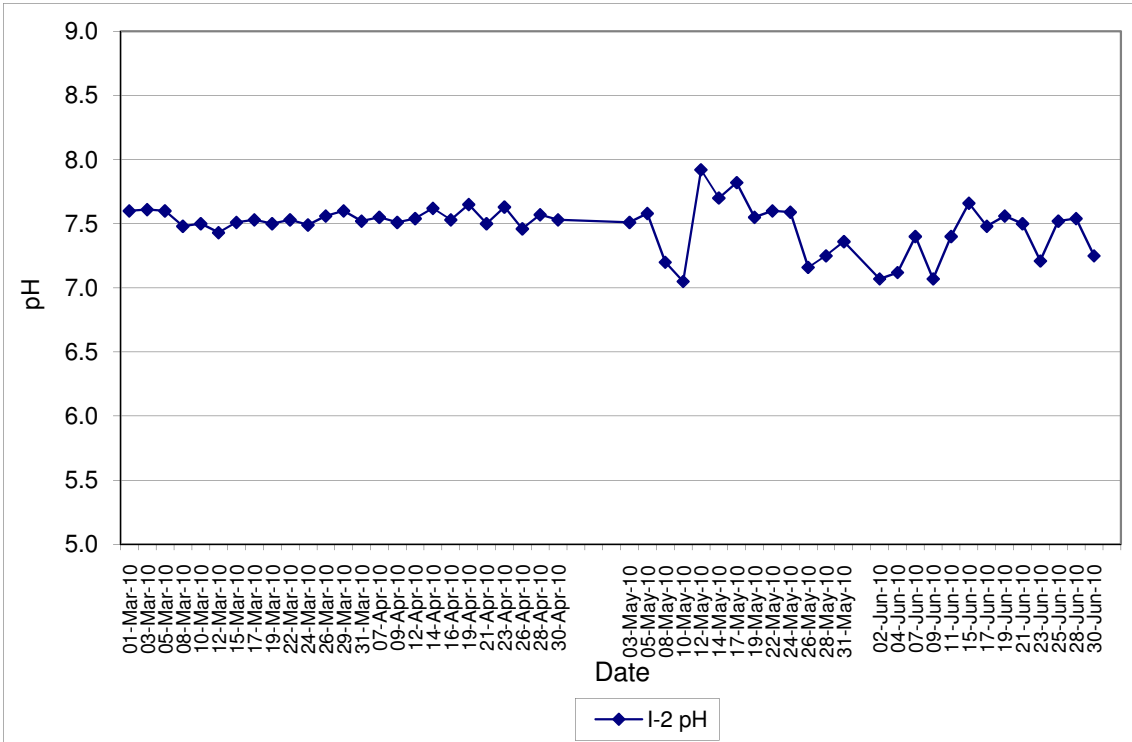
**Contract No. DC/2007/12 - Design and Construction of Tsuen Wan Drainage Tunnel
Water Quality Results at Sik Sik Yuen Ho Fung College (I-1)
Mar-10 to Jun-10**



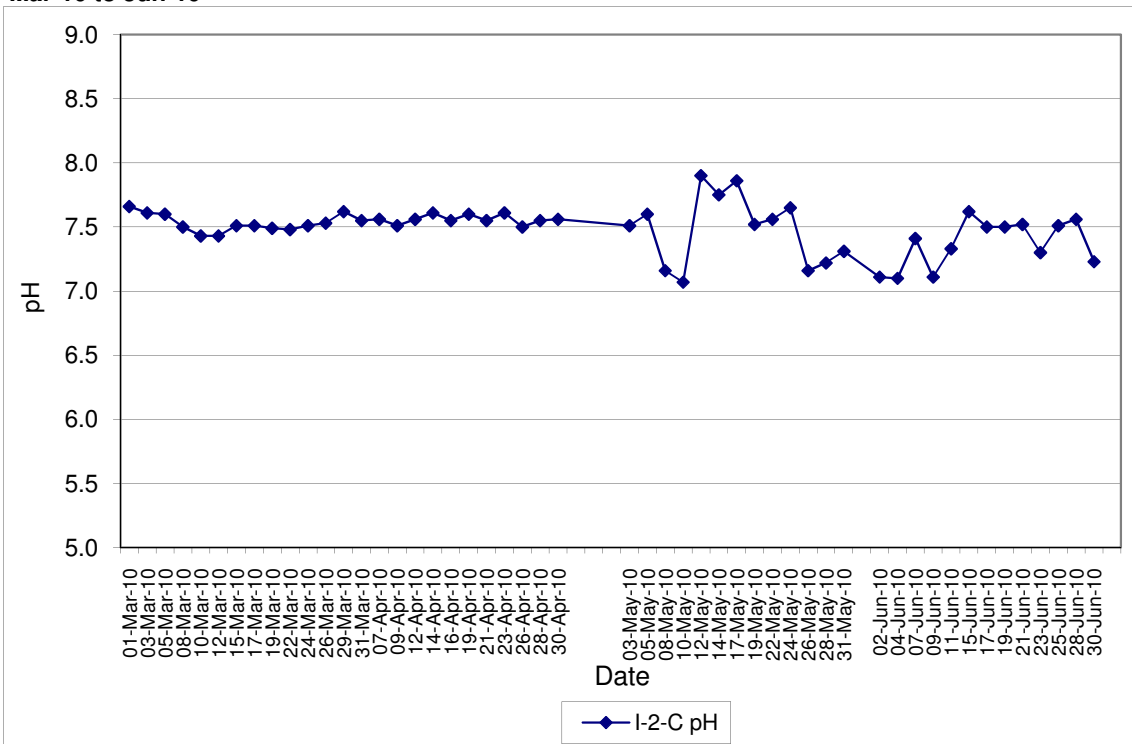
**Contract No. DC/2007/12 - Design and Construction of Tsuen Wan Drainage Tunnel
Water Quality Results at Sik Sik Yuen Ho Fung College (I-1-C)
Mar-10 to Jun-10**



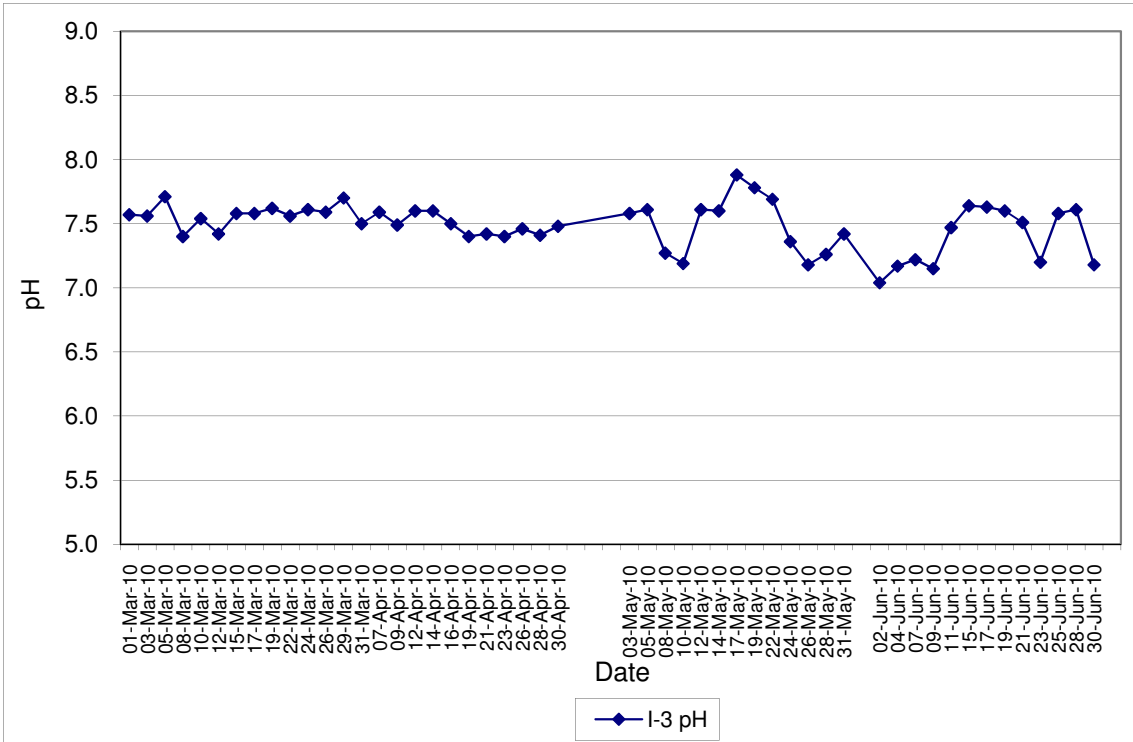
**Contract No. DC/2007/12 - Design and Construction of Tsuen Wan Drainage Tunnel
Water Quality Results at Hong Hoi Chee Hong Temple (I-2)
Mar-10 to Jun-10**



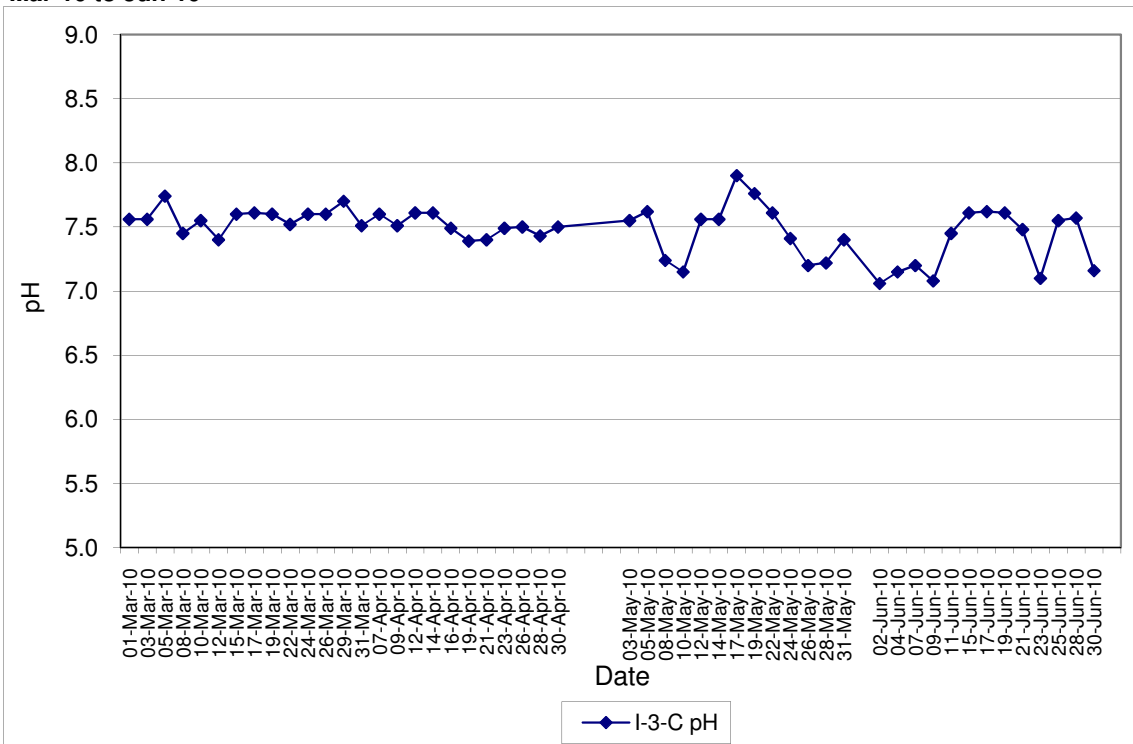
**Contract No. DC/2007/12 - Design and Construction of Tsuen Wan Drainage Tunnel
Water Quality Results at Hong Hoi Chee Hong Temple (I-2-C)
Mar-10 to Jun-10**



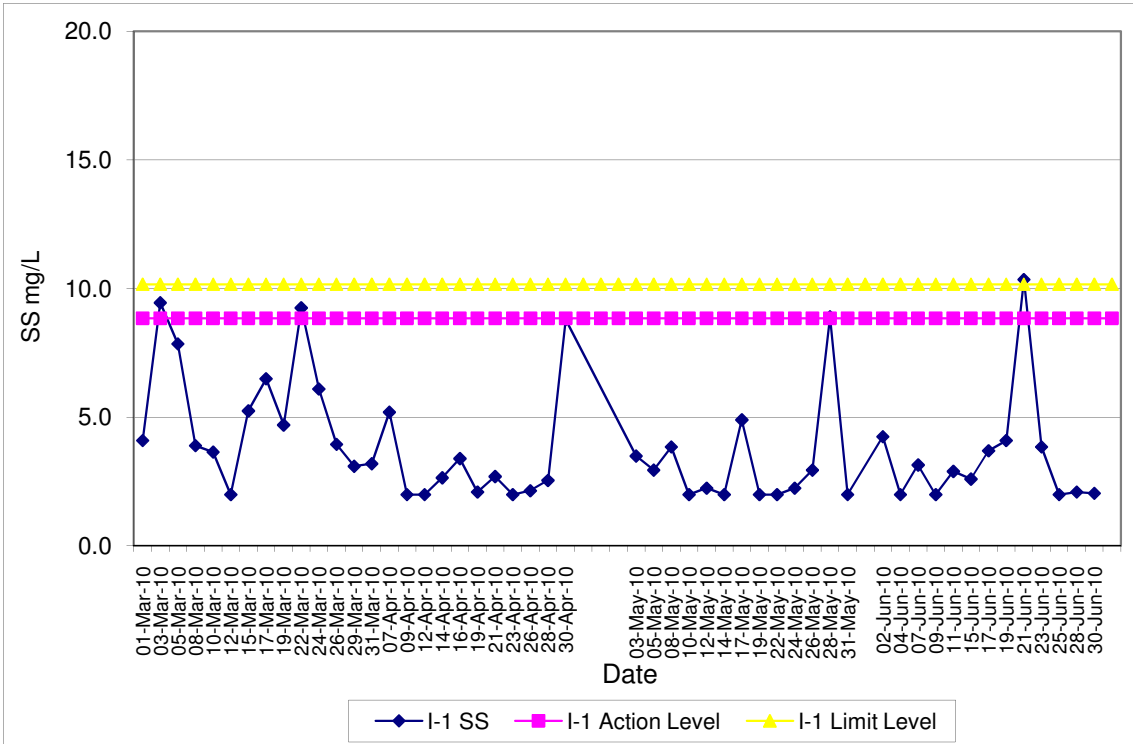
**Contract No. DC/2007/12 - Design and Construction of Tsuen Wan Drainage Tunnel
 Water Quality Results at Squatters (I-3)
 Mar-10 to Jun-10**



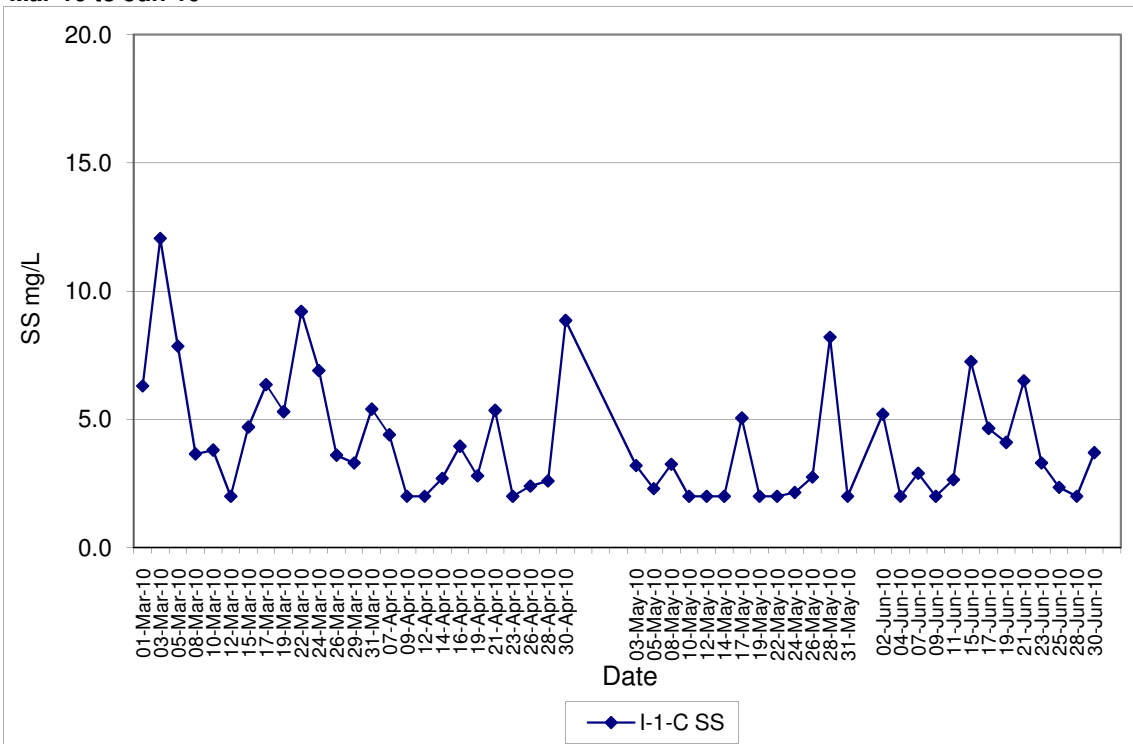
**Contract No. DC/2007/12 - Design and Construction of Tsuen Wan Drainage Tunnel
 Water Quality Results at Squatters (I-3-C)
 Mar-10 to Jun-10**



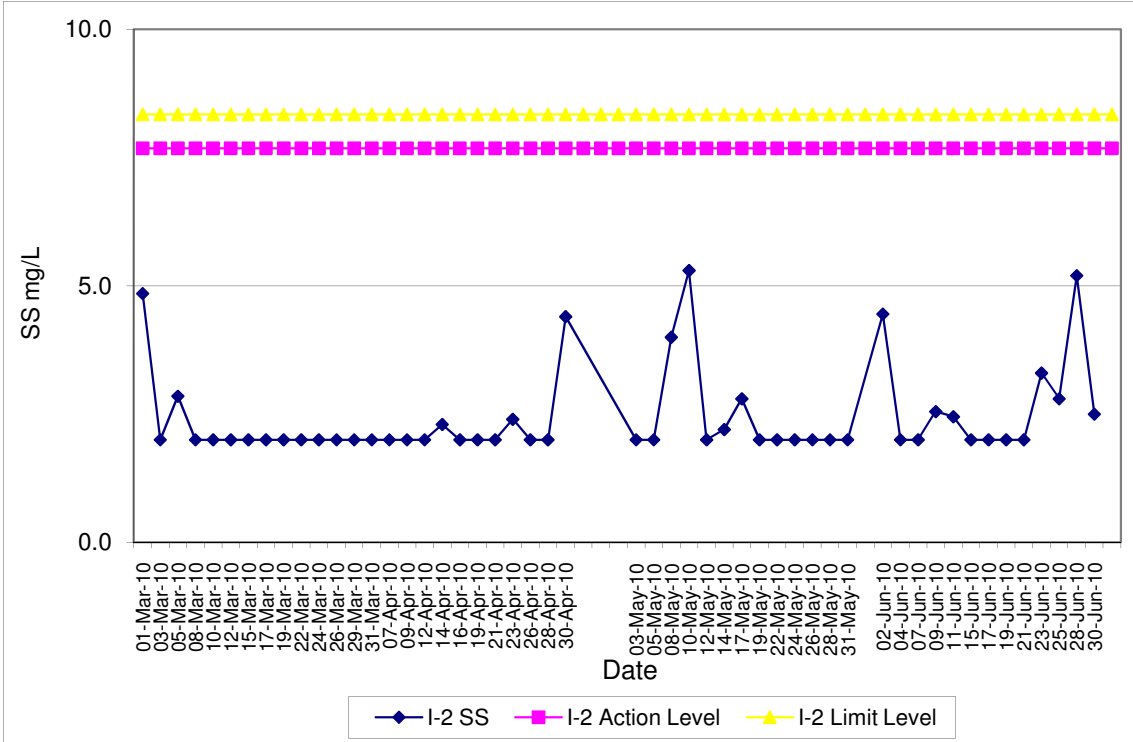
**Contract No. DC/2007/12 - Design and Construction of Tsuen Wan Drainage Tunnel
 Water Quality Results at Sik Sik Yuen Ho Fung College (I-1)
 Mar-10 to Jun-10**



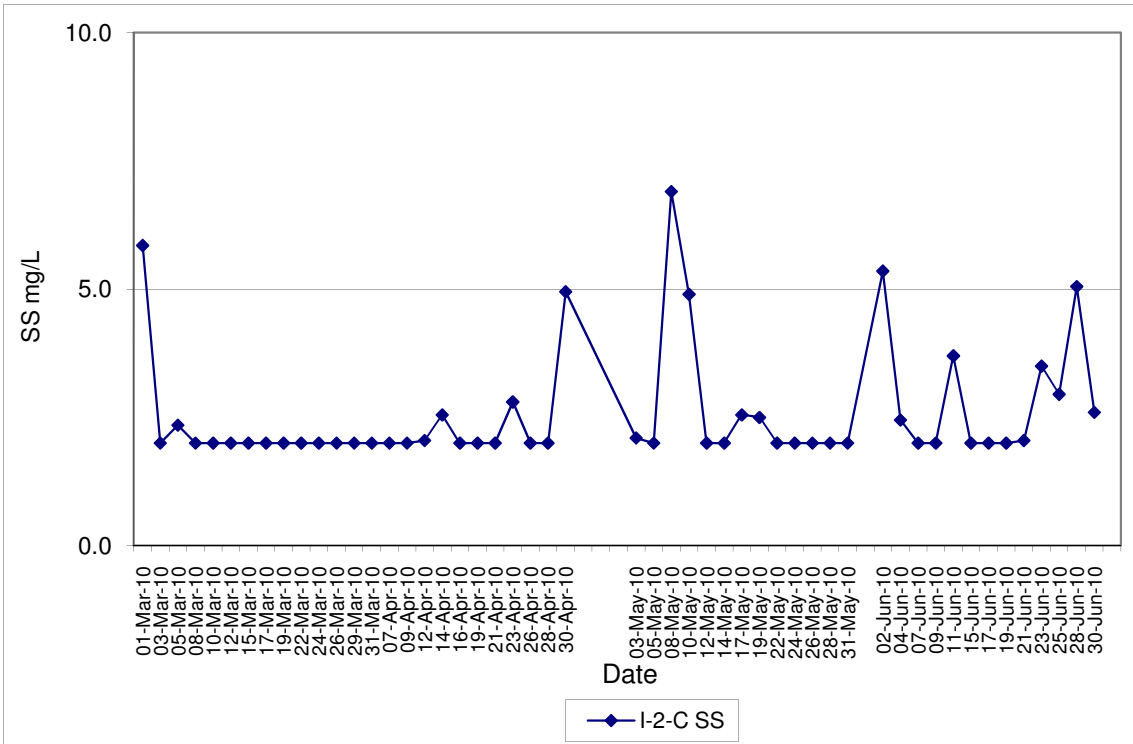
**Contract No. DC/2007/12 - Design and Construction of Tsuen Wan Drainage Tunnel
 Water Quality Results at Sik Sik Yuen Ho Fung College (I-1-C)
 Mar-10 to Jun-10**



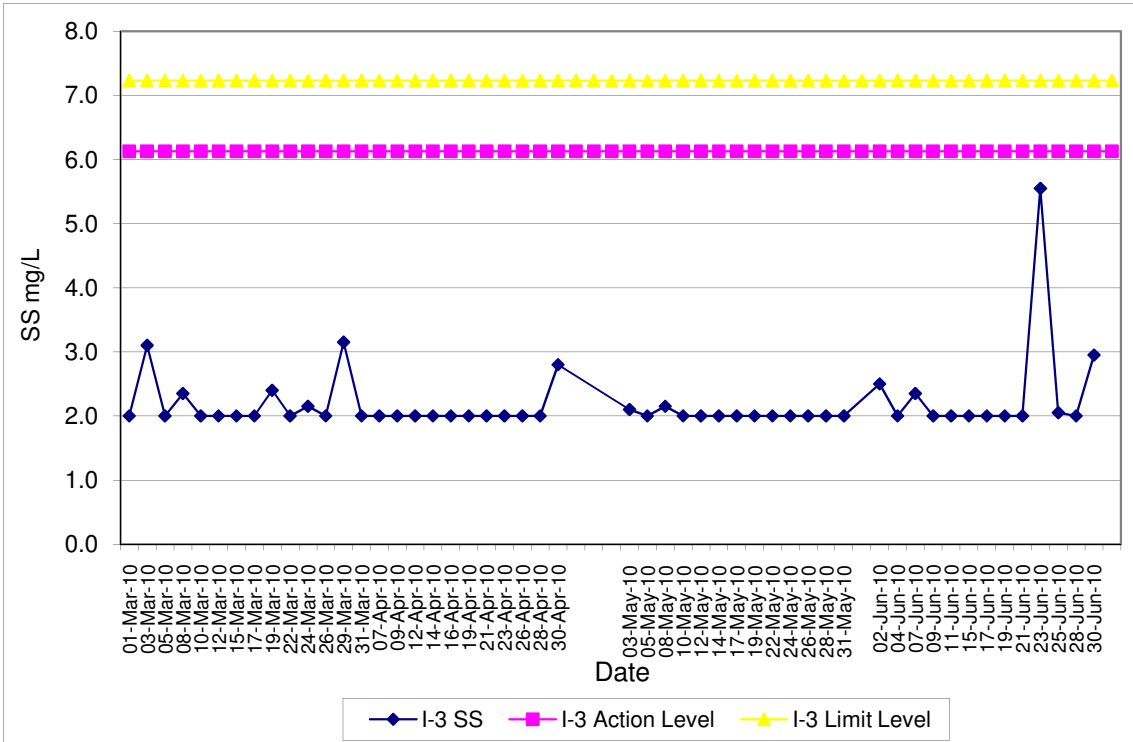
**Contract No. DC/2007/12 - Design and Construction of Tsuen Wan Drainage Tunnel
 Water Quality Results at Hong Hoi Chee Hong Temple (I-2)
 Mar-10 to Jun-10**



**Contract No. DC/2007/12 - Design and Construction of Tsuen Wan Drainage Tunnel
 Water Quality Results at Hong Hoi Chee Hong Temple (I-2-C)
 Mar-10 to Jun-10**



**Contract No. DC/2007/12 - Design and Construction of Tsuen Wan Drainage Tunnel
 Water Quality Results at Squatters (I-3)
 Mar-10 to Jun-10**



**Contract No. DC/2007/12 - Design and Construction of Tsuen Wan Drainage Tunnel
 Water Quality Results at Squatters (I-3-C)
 Mar-10 to Jun-10**

