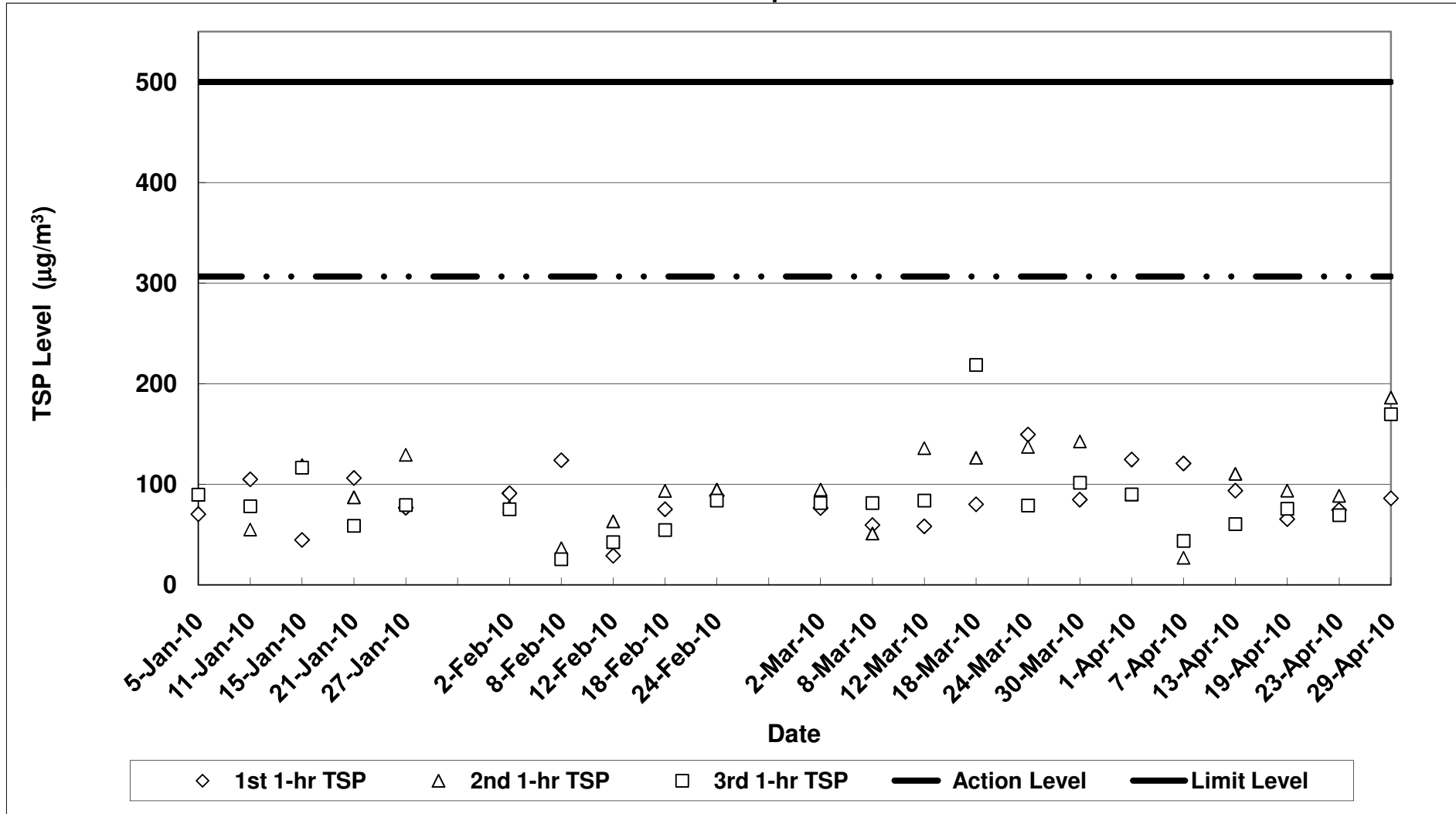


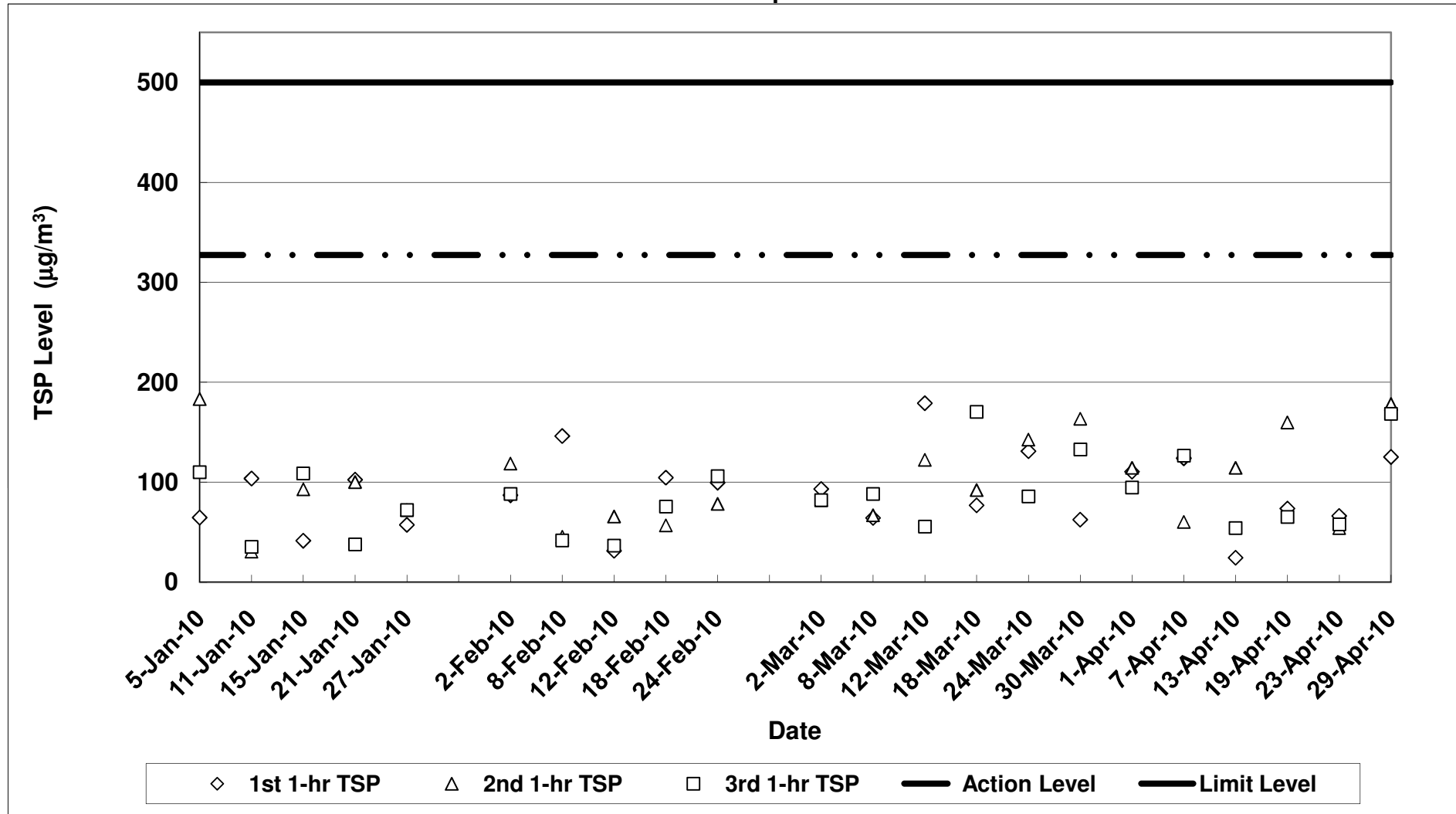
Air Quality Impact Monitoring Results (1-Hour TSP)

Location	Monitoring Date	Weather Conditions	Wind Speed with Direction (m/s)	Temp (°C)	Timer-I	Timer-F	Time (mins)	Flow-I (CFM)	Flow-F (CFM)	Flow-I (m³/min)	Flow-F (m³/min)	Flow-avg (m³/min)	Volume (m³)	Weight-I (g)	Weight-F (g)	Weight-diff. (g)	1-hr TSP (µg/m³)	Average 1-Hr TSP (µg/m³)	Action/Limit Levels (µg/m³)	Observation / Site Condition	Remark
Sik Sik Yuen Ho Fung College - Intake (ASR1)	01-Apr-10	Cloudy	0.5E	24	591742	591842	60.0	40	40	1.30	1.30	1.30	77.83	2.8030	2.8127	0.0097	124.6	101.5	306.6/500	Steel bending and erection	Traffic
		Cloudy	0.5E	24	591842	591942	60.0	40	40	1.30	1.30	1.30	77.83	2.8081	2.8151	0.0070	89.9				
		Cloudy	0.5E	24	591942	592042	60.0	40	40	1.30	1.30	1.30	77.83	2.8057	2.8127	0.0070	89.9				
	07-Apr-10	Rainy	1.0E	18	592042	592142	60.0	40	40	1.30	1.30	1.30	77.83	2.8302	2.8396	0.0094	120.8	63.8		Steel bending and erection	Traffic. Major construction works are carried out at Hour 1.
		Rainy	1.0E	18	592142	592242	60.0	40	40	1.30	1.30	1.30	77.83	2.8271	2.8292	0.0021	27.0				
		Rainy	1.0E	18	592242	592342	60.0	40	40	1.30	1.30	1.30	77.83	2.8346	2.8360	0.0014	43.7				
	13-Apr-10	Fine	0.3E	24	592342	592442	60.0	40	40	1.30	1.30	1.297	77.83	2.8240	2.8313	0.0073	93.8	88.2		Steel bending and erection	Traffic
		Fine	0.3E	24	592442	592542	60.0	40	40	1.30	1.30	1.30	77.83	2.8265	2.8351	0.0086	110.5				
		Fine	0.3E	24	592542	592642	60.0	40	40	1.30	1.30	1.30	77.83	2.8251	2.8298	0.0047	60.4				
	19-Apr-10	Cloudy	0.3E	22	592642	592742	60.0	40	40	1.30	1.30	1.30	77.83	2.8239	2.8290	0.0051	65.5	78.4		Steel bending and erection	Traffic
		Cloudy	0.3E	22	592742	592842	60.0	40	40	1.30	1.30	1.30	77.83	2.8195	2.8268	0.0073	93.8				
		Cloudy	0.3E	22	592842	592942	60.0	40	40	1.30	1.30	1.30	77.83	2.8405	2.8464	0.0059	75.8				
23-Apr-10	Cloudy	0.5E	21	592942	593042	60.0	40	40	1.30	1.30	1.30	77.83	2.8278	2.8336	0.0058	74.5	77.5		Steel bending and erection	Traffic	
	Fine	0.5E	21	593042	593142	60.0	40	40	1.30	1.30	1.30	77.83	2.8176	2.8245	0.0069	88.7					
	Fine	0.5E	21	593142	593242	60.0	40	40	1.30	1.30	1.30	77.83	2.8278	2.8332	0.0054	69.4					
29-Apr-10	Rainy	0.8E	21	593242	593342	60.0	40	40	1.30	1.30	1.30	77.83	2.8317	2.8384	0.0067	86.1	147.3		Steel bending and erection	Traffic	
	Rainy	0.8E	21	593342	593442	60.0	40	40	1.30	1.30	1.30	77.83	2.8425	2.8570	0.0145	186.3					
	Rainy	0.8E	21	593442	593542	60.0	40	40	1.30	1.30	1.30	77.83	2.8401	2.8533	0.0132	169.6					
Hong Hai Chee Hong Temple - Intake (ASR3)	01-Apr-10	Cloudy	0.5E	24	560390	560390	60.0	40	40	1.36	1.36	1.36	81.38	2.7960	2.805	0.0090	110.6	106.5		Drilling	Traffic
		Cloudy	0.5E	24	560390	560490	60.0	40	40	1.36	1.36	1.36	81.38	2.7900	2.7993	0.0093	114.3				
		Cloudy	0.5E	24	560490	560590	60.0	40	40	1.36	1.36	1.36	81.38	2.7870	2.7947	0.0077	94.6				
	07-Apr-10	Rainy	0.8E	18	560590	560690	60.0	40	40	1.36	1.36	1.36	81.38	2.8230	2.8331	0.0101	124.1	103.6		Drilling	Traffic
		Rainy	0.8E	18	560690	560790	60.0	40	40	1.36	1.36	1.36	81.38	2.8305	2.8354	0.0049	60.2				
		Rainy	0.8E	18	560790	560890	60.0	40	40	1.36	1.36	1.36	81.38	2.8331	2.8434	0.0103	126.6				
	13-Apr-10	Fine	0.7E	24	560890	560990	60.0	40	40	1.36	1.36	1.36	81.38	2.8145	2.8165	0.0020	24.6	64.3		Drilling	Traffic
		Fine	0.7E	24	560990	561090	60.0	40	40	1.36	1.36	1.36	81.38	2.8119	2.8212	0.0093	114.3				
		Fine	0.7E	24	561090	561190	60.0	40	40	1.36	1.36	1.36	81.38	2.8159	2.8203	0.0044	54.1				
	19-Apr-10	Cloudy	0.3E	22	561190	561290	60.0	40	40	1.36	1.36	1.36	81.38	2.8320	2.8380	0.0060	73.7	99.5		Drilling	Traffic
		Cloudy	0.3E	22	561290	561390	60.0	40	40	1.36	1.36	1.36	81.38	2.8279	2.8409	0.0130	159.8				
		Cloudy	0.3E	22	561390	561490	60.0	40	40	1.36	1.36	1.36	81.38	2.8217	2.8270	0.0053	65.1				
23-Apr-10	Fine	0.5E	21	561490	561590	60.0	40	40	1.36	1.36	1.36	81.38	2.8195	2.8249	0.0054	66.4	59.4		Steel bending and erection	Traffic	
	Fine	0.5E	21	561590	561690	60.0	40	40	1.36	1.36	1.36	81.38	2.8168	2.8312	0.0144	54.1					
	Fine	0.5E	21	561690	561790	60.0	40	40	1.36	1.36	1.36	81.38	2.8160	2.8207	0.0047	57.8					
29-Apr-10	Rainy	0.2E	21	561790	561890	60.0	40	40	1.36	1.36	1.36	81.38	2.8253	2.8355	0.0102	125.3	157.3		Breaking	Traffic	
	Rainy	0.2E	21	561890	561990	60.0	40	40	1.36	1.36	1.36	81.38	2.8251	2.8396	0.0145	178.2					
	Rainy	0.2E	21	561990	562090	60.0	40	40	1.36	1.36	1.36	81.38	2.8133	2.8270	0.0137	168.4					
Long Beach Gardens - Outfall (ASR8)	01-Apr-10	Cloudy	0.5E	24	615280	615380	60.0	40	40	1.32	1.32	1.32	78.94	2.8072	2.8167	0.0095	120.3	87.8		Excavation work	Traffic.
		Cloudy	0.5E	24	615380	615480	60.0	40	40	1.32	1.32	1.32	78.94	2.8191	2.8262	0.0071	115.3				
		Cloudy	0.5E	24	615480	615580	60.0	40	40	1.32	1.32	1.32	78.94	2.8272	2.8294	0.0022	27.9				
	07-Apr-10	Rainy	1.5E	18	615580	615680	60.0	40	40	1.32	1.32	1.32	78.94	2.8045	2.8116	0.0071	89.9	57.0		Breaking by backhoe	Traffic
		Rainy	1.5E	18	615680	615780	60.0	40	40	1.32	1.32	1.32	78.94	2.8279	2.8307	0.0028	35.5				
		Rainy	1.5E	18	615780	615880	60.0	40	40	1.32	1.32	1.32	78.94	2.8132	2.8168	0.0036	45.6				
	13-Apr-10	Fine	0.5E	24	615880	615980	60.0	40	40	1.32	1.32	1.32	78.94	2.8367	2.8429	0.0062	78.5	77.7		Breaking and Excavation Works	Traffic
		Fine	0.5E	24	615980	616080	60.0	40	40	1.32	1.32	1.32	78.94	2.8319	2.8397	0.0078	98.9				
		Fine	0.5E	24	616080	616180	60.0	40	40	1.32	1.32	1.32	78.94	2.8176	2.8220	0.0044	55.7				
	19-Apr-10	Cloudy	0.5E	22	616180	616280	60.0	40	40	1.32	1.32	1.32	78.94	2.8208	2.8283	0.0075	95.0	71.8		Breaking and Excavation Works	Traffic
		Cloudy	0.5E	22	616280	616380	60.0	40	40	1.32	1.32	1.32	78.94	2.8241	2.8294	0.0053	67.1				
		Cloudy	0.5E	22	616380	616480	60.0	40	40	1.32	1.32	1.32	78.94	2.8133	2.8175	0.0042	53.2				
23-Apr-10	Fine	0.9E	21	616480	616580	60.0	40	40	1.32	1.32	1.32	78.94	2.8101	2.8155	0.0054	68.4	44.3		Breaker & Excavation Works	Traffic	
	Fine	0.9E	21	616580	616680	60.0	40	40	1.32	1.32	1.32	78.94	2.8051	2.8090	0.0039	49.4					
	Fine	0.9E	21	616680	616780	60.0	40	40	1.32	1.32	1.32	78.94	2.8249	2.8361	0.0112	15.2					
29-Apr-10	Rainy	0.9E	21	616780	616880	60.0	40	40	1.32	1.32	1.32	78.94	2.8256	2.8350	0.0094	119.1	125.4		Breaker & Excavation Works	Traffic	
	Rainy	0.9E	21	616880	616980	60.0	40	40	1.32	1.32	1.32	78.94	2.8223	2.8360	0.0137	173.5					
	Rainy	0.9E	21	616980	617080	60.0	40	40	1.32	1.32	1.32	78.94	2.8294	2.8360	0.0066	83.6					
Greenview Terrace - Outfall (ASR9)	01-Apr-10	Cloudy	0.5E	24	547180	547280	60.0	40	40	1.21	1.21	1.21	72.39	2.8115	2.8189	0.0074	102.2	111.4		Excavation work	Traffic.
		Cloudy	0.5E	24	547280	547380	60.0	40	40	1.21	1.21	1.21	72.39	2.7988	2.7975	0.0013	122.9				
		Cloudy	0.5E	24	547380	547480	60.0	40	40	1.21	1.21	1.21	72.39	2.8105	2.8184	0.0079	109.1				
	07-Apr-10	Rainy	2.0E	18	547480	547580	60.0	40	40	1.21	1.21	1.21	72.39	2.825	2.8349	0.0099	136.8	67.2		Breaking by backhoe	Traffic
		Rainy	2.0E	18	547580	547680	60.0	40	40	1.21	1.21	1.21	72.39	2.7988	2.8003	0.0017	23.5				
		Rainy	2.0E	18	547680	547780	60.0	40	40	1.21	1.21	1.21	72.39	2.8153	2.8183	0.0030	41.4				
	13-Apr-10	Fine	0.5E	24	547780	547890	60.0	40	40	1.21	1.21	1.21	72.39	2.8190	2.8256	0.0066	91.2	82.4		Breaking and Excavation Works	Traffic
		Fine	0.5E	24	547890	547990	60.0	40	40	1.21	1.21	1.21	72.39	2.8226	2.8286	0.0060	82.9				
		Fine	0.5E	24	547990	548090	60.0	40	40	1											

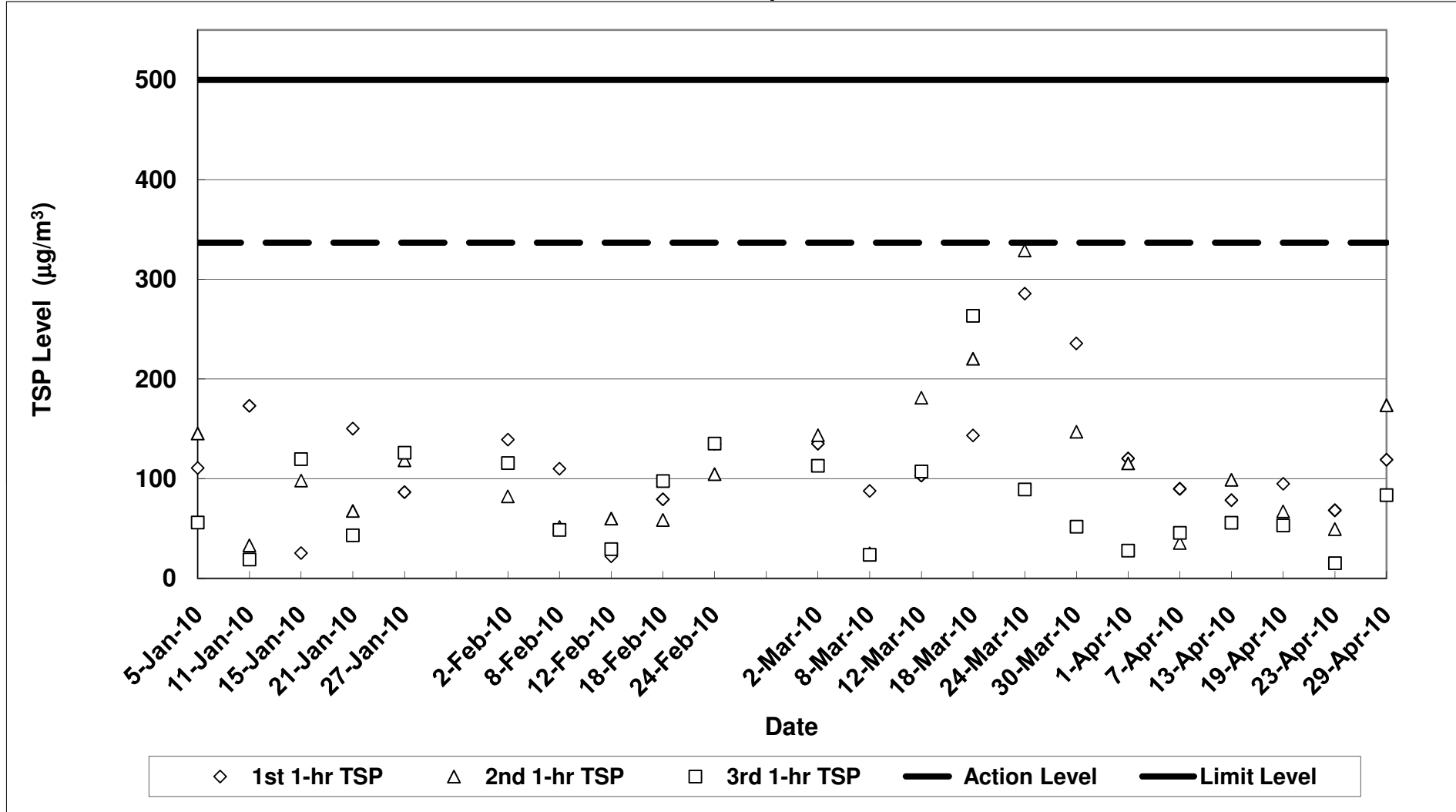
**Contract No. DC/2007/12 - Design and Construction of Tsuen Wan Drainage Tunnel
 Air Quality Monitoring (1-hr TSP) Results at Sik Sik Yuen Ho Fung College - Intake (ASR1)
 Jan-10 to Apr-10**



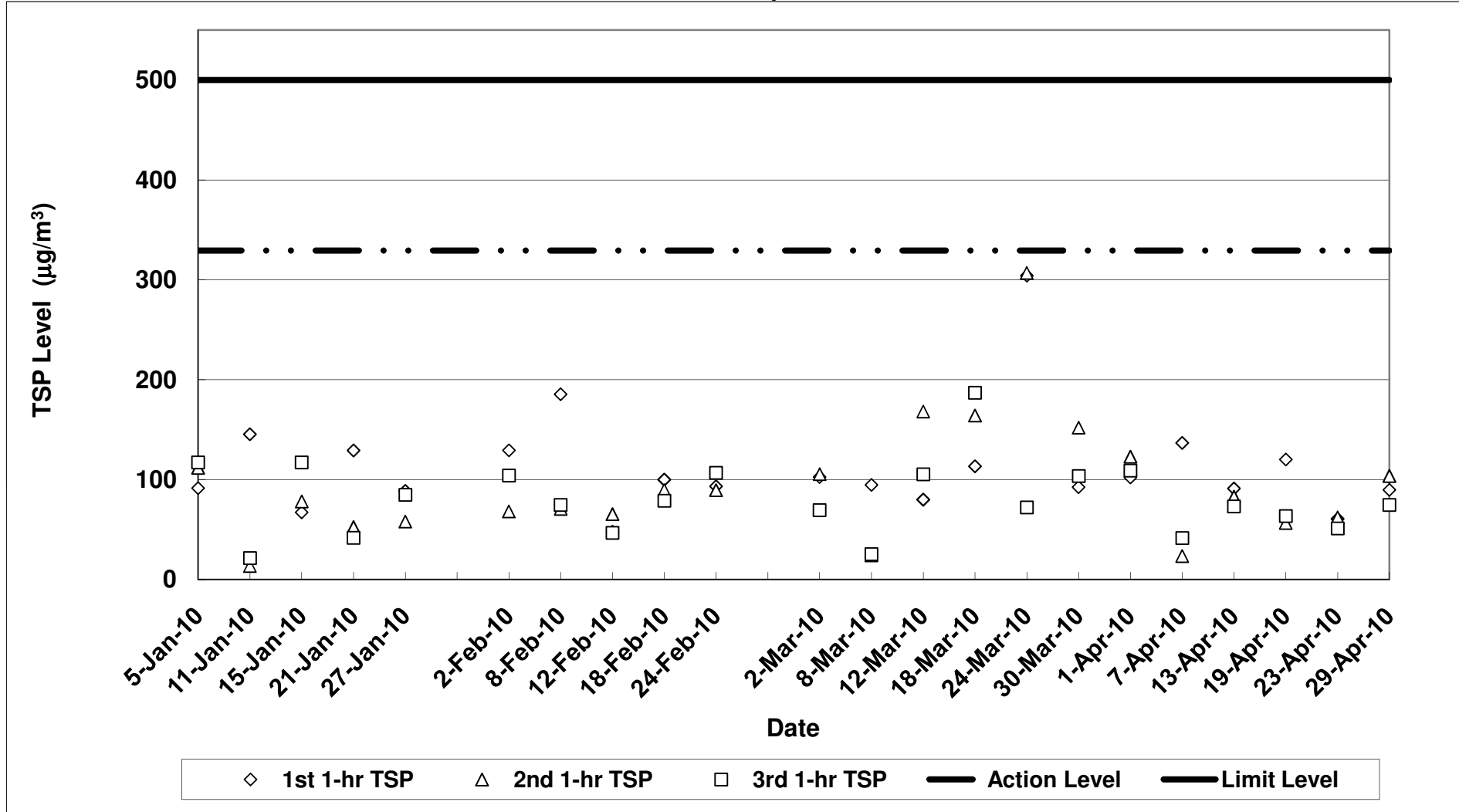
**Contract No. DC/2007/12 - Design and Construction of Tsuen Wan Drainage Tunnel
Air Quality Monitoring (1-hr TSP) Results at Hong Hoi Chee Hong Temple - Intake (ASR3)
Jan-10 to Apr-10**



**Contract No. DC/2007/12 - Design and Construction of Tsuen Wan Drainage Tunnel
 Air Quality Monitoring (1-hr TSP) Results at Long Beach Gardens - Outfall (ASR8)
 Jan-10 to Apr-10**



**Contract No. DC/2007/12 - Design and Construction of Tsuen Wan Drainage Tunnel
 Air Quality Monitoring (1-hr TSP) Results at Greenview Terrance - Outfall (ASR9)
 Jan-10 to Apr-10**



Contract No. DC/2007/12 - Design and Construction of Tsuen Wan Drainage Tunnel

Noise Impact Monitoring Results

Monitoring Locations	Date	Weather Conditions	Temperature (°C)	Wind Speed (m/s)	Wind Direction	Start Time	End Time	BL ¹ dB(A)	LL ² dB(A)	L _{eq} (30min) dB(A)	L ₁₀ (30min) dB(A)	L ₉₀ (30min) dB(A)	CNL ³ dB(A)	Observation / Site Condition	Remark
Sik Sik Yuen Ho Fung College NSR 1	07-Apr-10	Cloudy & Shower	18	1	E	16:22	16:52	66.1	70	65.7	67.8	61.6	-	Steel bending and erection	Traffic noise; No raining during measurement
	13-Apr-10	Fine	24	0.3	E	14:55	15:25		65	62.5	65.3	59.2	-	Steel bending and erection	Traffic noise
	19-Apr-10	Cloudy	22	0.3	E	16:00	16:30		70	64.0	66.2	59.0	-	Steel bending and erection	Traffic noise
	30-Apr-10	Cloudy	21	0.3	E	11:12	11:42		70	64.4	67.0	60.1	-	Steel bending and erection	Traffic noise
									70					-	
Hong Hoi Chee Hong Temple NSR 3	07-Apr-10	Cloudy & Shower	18	0.8	E	15:40	16:10	57.9	75	72.3	75.0	69.1	-	Drilling	Traffic noise; No raining during measurement
	13-Apr-10	Fine	24	0.3	E	14:12	14:42		75	66.0	68.4	61.9	-	Hammering	Traffic noise
	19-Apr-10	Cloudy	22	0.3	E	15:13	15:43		75	70.0	71.8	66.4	-	Concrete work	Traffic noise
	30-Apr-10	Cloudy	21	0.2	E	10:16	10:46		75	65.3	67.8	62.3	-	Cutting noise & drilling	Traffic noise
									75					-	
Squatters NSR 6	07-Apr-10	Cloudy & Shower	18	0.8	E	10:10	10:40	61.2	75	67.2	69.3	62.7	-	Breaking by backhoe, excavation work	Bird noise; No raining during measurement
	13-Apr-10	Fine	24	0.3	E	10:05	10:35		75	70.5	74.7	59.7	-	Breaking, excavation work	Bird noise
	19-Apr-10	Cloudy	22	0.3	E	11:15	11:45		75	65.9	68.9	59.2	-	Drilling & excavation work	Bird noise
	30-Apr-10	Cloudy	21	0.2	E	09:12	09:42		75	65.1	68.5	55.3	-	Breaker & excavation work	Bird noise
									75					-	
Long Beach Gardens NSR 8	07-Apr-10	Cloudy & Shower	18	1.5	E	14:33	15:03	60.9	75	67.1	70.1	62.0	-	Breaking by backhoe	Traffic noise; No raining during measurement
	13-Apr-10	Fine	24	0.5	E	11:15	11:45		75	64.4	65.7	62.6	-	Breaking by backhoe	Traffic noise
	19-Apr-10	Cloudy	22	0.5	E	14:25	14:55		75	64.4	66.0	61.3	-	Breaking & excavation work	Traffic noise
	29-Apr-10	Rainy	21	0.9	E	15:50	16:20		75	65.7	67.7	63.5	-	Breaking & excavation work	Traffic noise; No raining during measurement
									75					-	
Greenview Terrace NSR 9	07-Apr-10	Cloudy & Shower	18	2.0	E	13:50	14:20	59.7	75	69.8	74.0	62.6	-	Breaking by backhoe	Traffic noise; No raining during measurement
	13-Apr-10	Fine	24	0.5	E	13:30	14:00		75	68.6	71.4	64.1	-	Breaking by backhoe	Traffic noise
	19-Apr-10	Cloudy	22	0.5	E	13:40	14:10		75	71.9	75.4	64.9	-	Breaking & excavation work	Traffic noise
	29-Apr-10	Rainy	21	0.8	E	15:00	15:30		75	68.7	71.3	64.7	-	Breaking & excavation work	Traffic noise; No raining during measurement
									75					-	

1: Baseline Noise Level

2: Limit Level

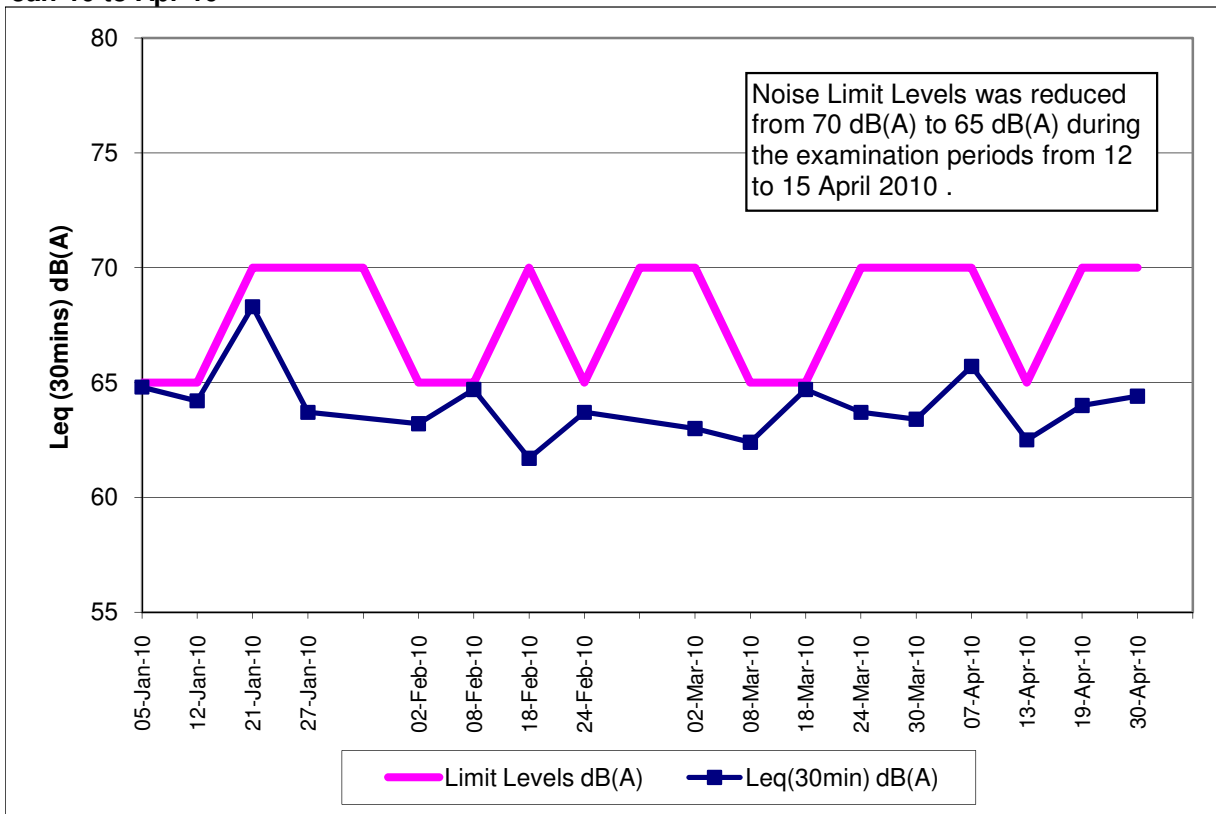
3: Corrected Noise Level

Note:

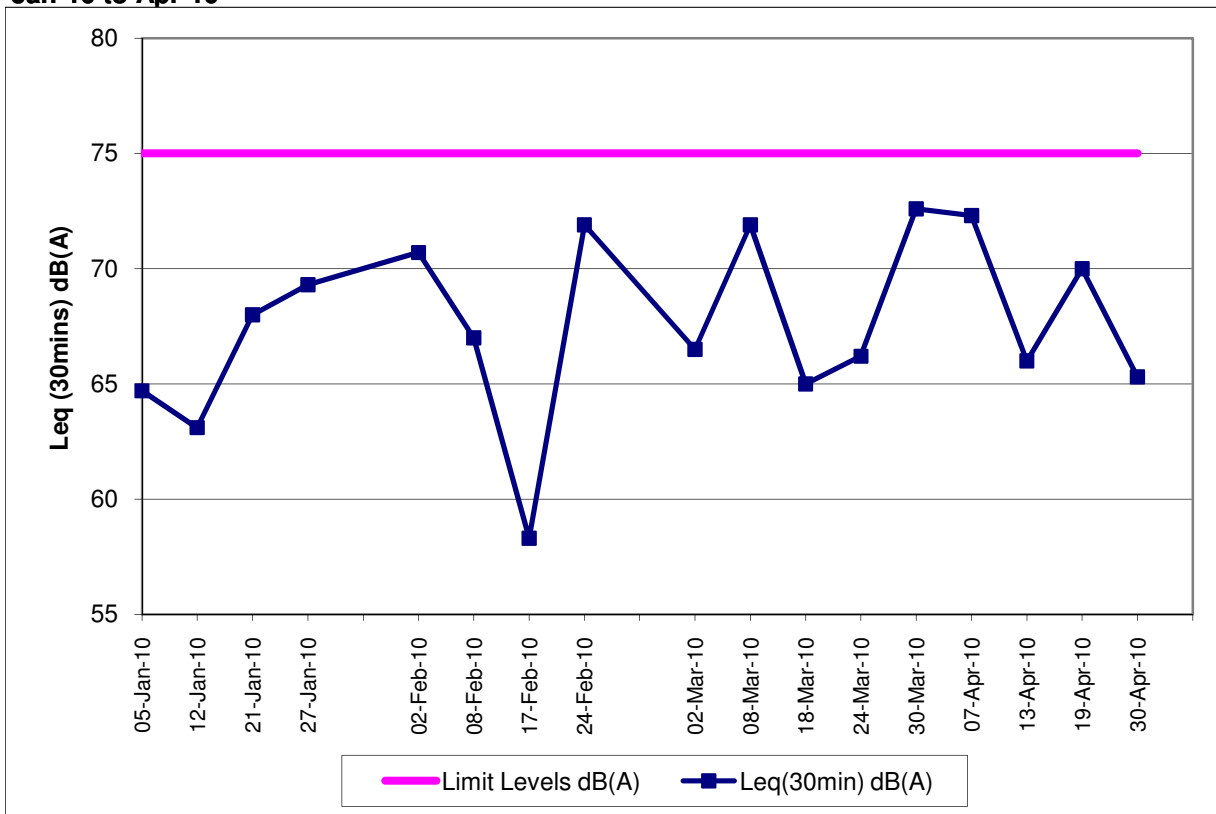
The limit level of NSR1 is 65dB(A) during school examination period.

Red Bold indicates an exceedance of Limit Level

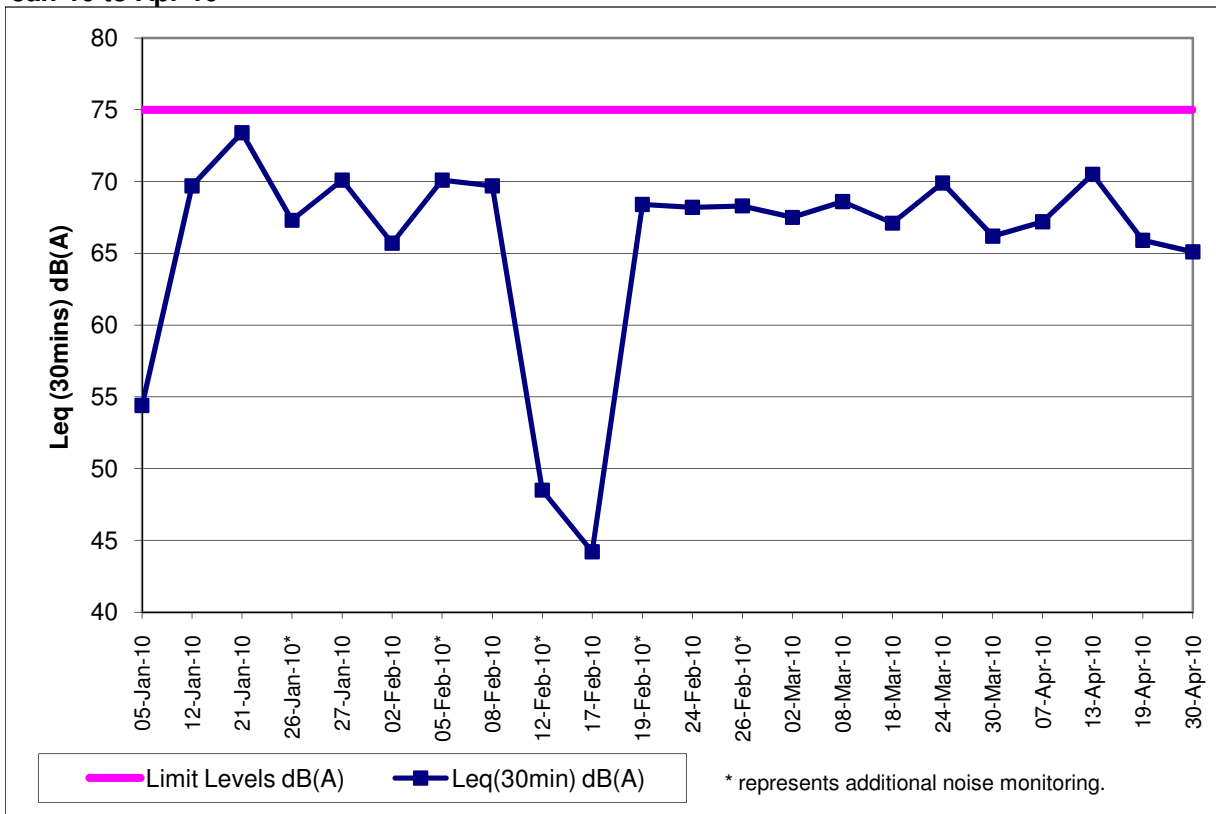
**Contract No. DC/2007/12 - Design and Construction of Tsuen Wan Drainage Tunnel
Noise Monitoring Results at Sik Sik Yuen Ho Fung College (NSR 1)
Jan-10 to Apr-10**



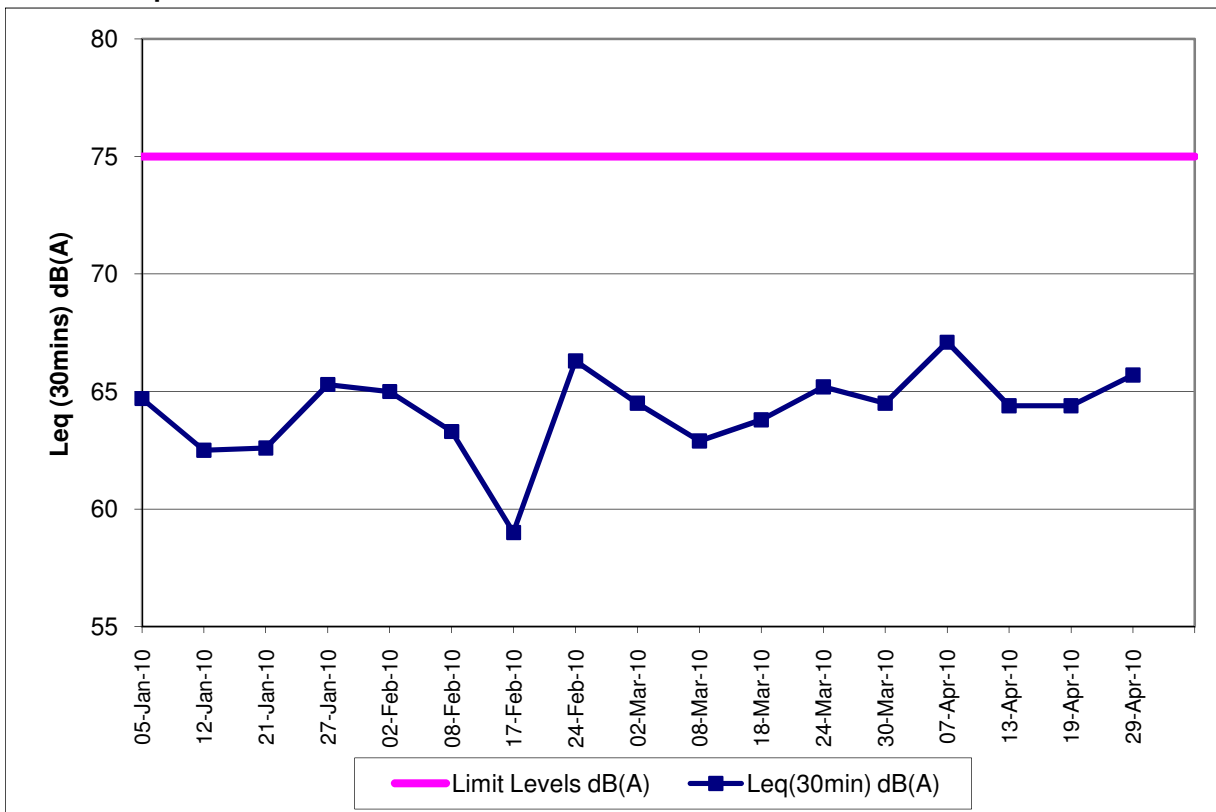
**Contract No. DC/2007/12 - Design and Construction of Tsuen Wan Drainage Tunnel
Noise Monitoring Results at Hong Hoi Chee Hong Temple (NSR 3)
Jan-10 to Apr-10**



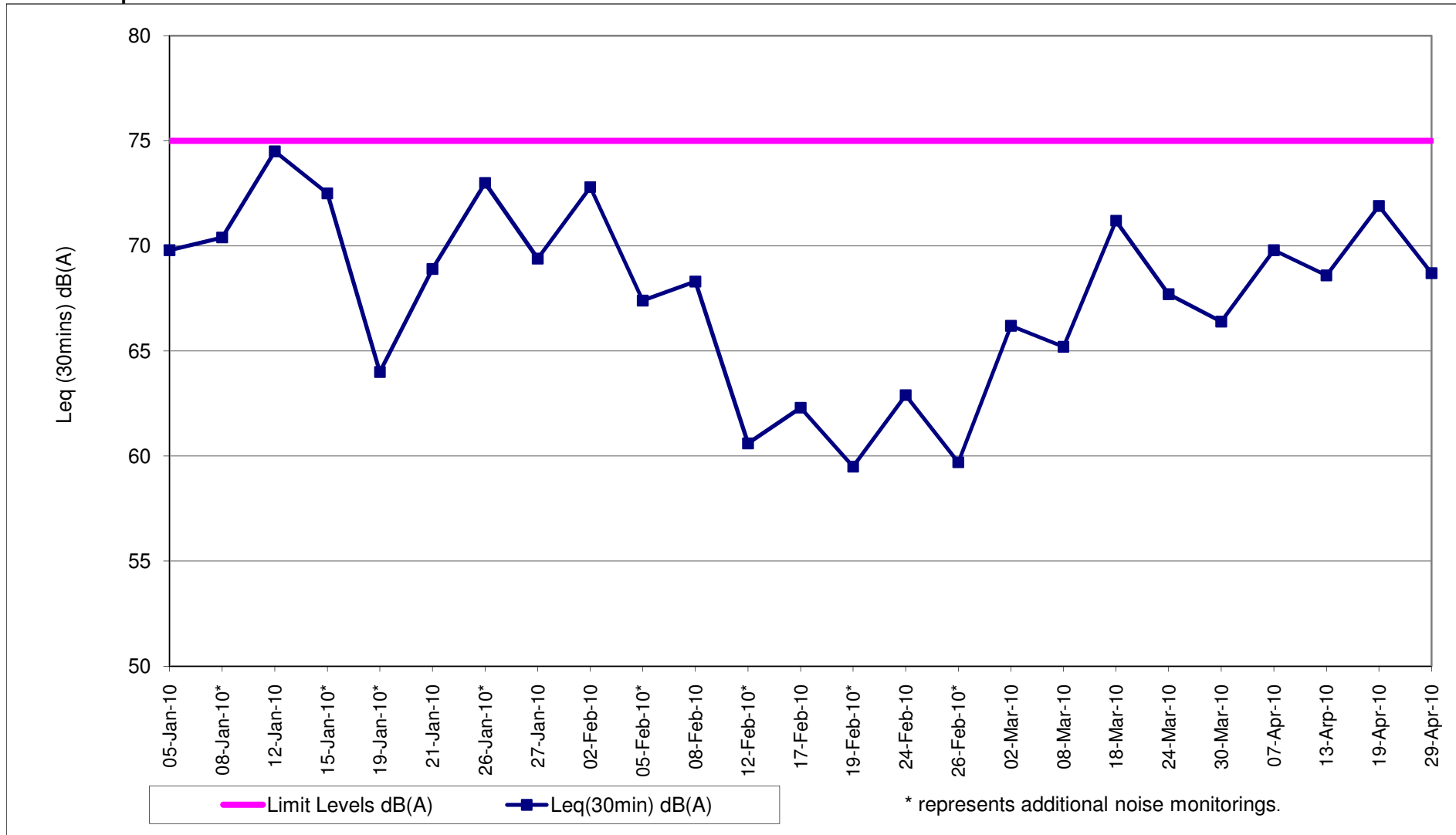
**Contract No. DC/2007/12 - Design and Construction of Tsuen Wan Drainage Tunnel
 Noise Monitoring Results at Squatters (NSR 6)
 Jan-10 to Apr-10**



**Contract No. DC/2007/12 - Design and Construction of Tsuen Wan Drainage Tunnel
 Noise Monitoring Results at Long Beach Gardens (NSR 8)
 Jan-10 to Apr-10**



Contract No. DC/2007/12 - Design and Construction of Tsuen Wan Drainage Tunnel
Noise Monitoring Results at NSR 9 (Greenview Terrace)
Jan-10 to Apr-10

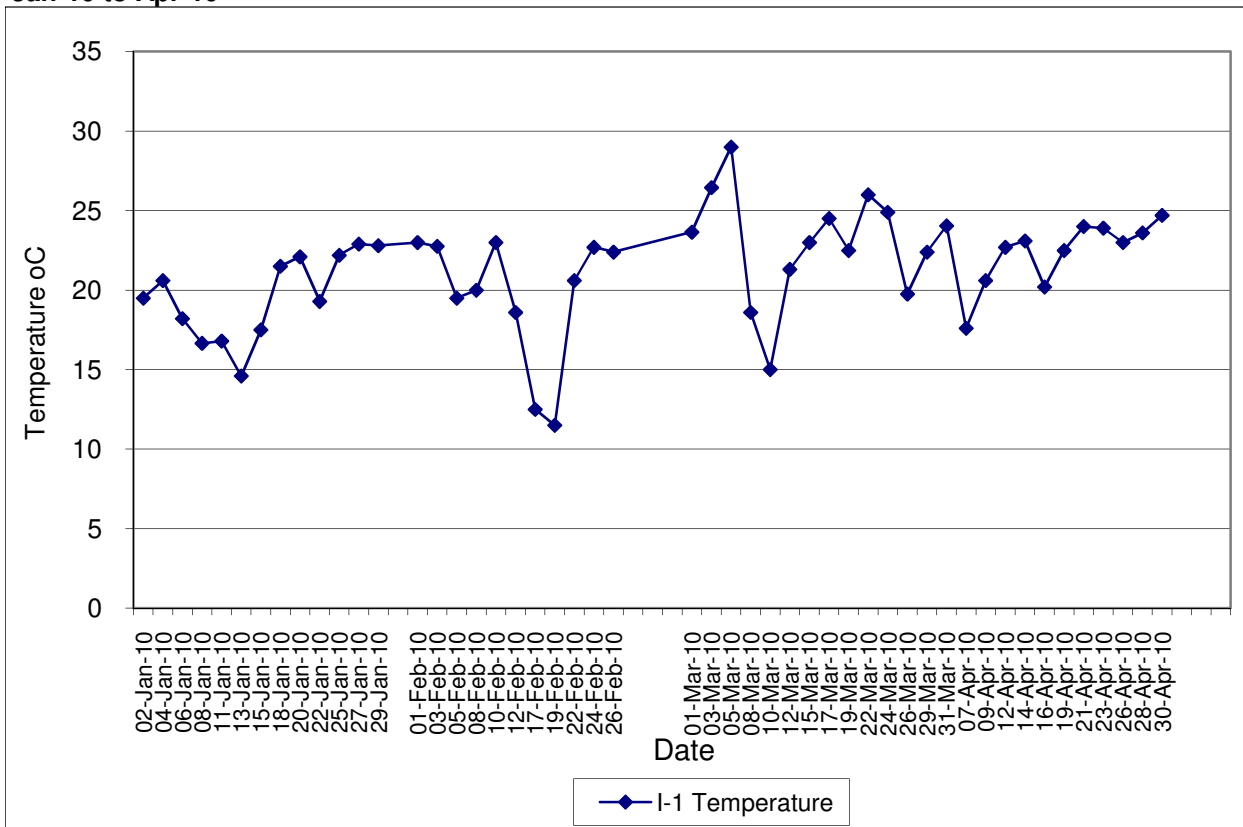


Contract No. DC/2007/12 - Design and Construction of Tsuen Wan Drainage Tunnel

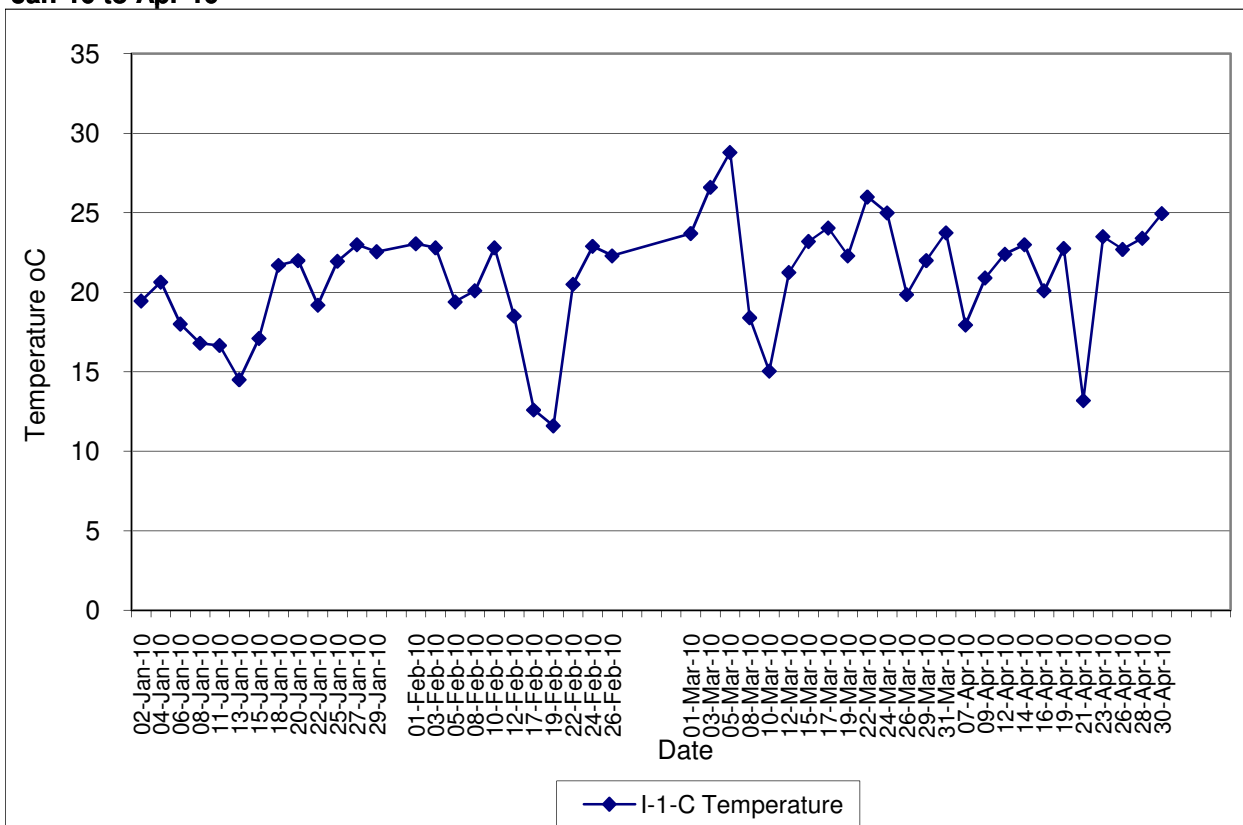
Water Quality Impact Monitoring Results

Monitoring Locations	Date	Start Time	Weather	Water Depth(m)	Temp			DO(mg/L)			Action/Limit Level of DO(mg/L)	pH			Turbidity(NTU)			Action/Limit Level of Tby	SS (mg/L)			Action/Limit Level of SS(mg/L)	Remarks:	Action to be taken			
					1	2	Avg	1	2	Avg		1	2	Avg	1	2	Avg		1	2	Avg						
Sik Sik Yuen Ho Fung College I-1	07-Apr-10	11:50	Rainy	<1	17.60	17.60	17.60	5.81	5.86	5.84	3.42 / 3.34	7.48	7.48	7.48	6.50	6.43	6.47	9.75 / 12.47	5.20	5.20	5.20	8.85 / 10.17	Steel bending and erection	Nil			
	09-Apr-10	11:49	Cloudy	<1	20.60	20.60	20.60	4.74	4.78	4.76		7.31	7.30	7.31	4.60	4.66	4.63		2.00	2.00	2.00		Steel bending and erection	Nil			
	12-Apr-10	09:18	Fine	<1	22.70	22.70	22.70	5.53	5.56	5.55		7.62	7.61	7.62	3.07	3.18	3.13		2.00	2.00	2.00		Steel bending and erection	Nil			
	14-Apr-10	11:30	Fine	<1	23.10	23.10	23.10	5.00	5.03	5.02		7.55	7.56	7.56	4.90	4.83	4.87		2.60	2.70	2.65		Steel bending and erection	Nil			
	16-Apr-10	11:33	Cloudy	<1	20.20	20.20	20.20	4.69	4.72	4.71		7.62	7.62	7.62	5.08	5.13	5.11		3.90	2.90	3.40		Steel bending and erection	Nil			
	19-Apr-10	10:07	Cloudy	<1	22.50	22.50	22.50	4.95	4.98	4.97		7.53	7.53	7.53	4.86	4.91	4.89		2.20	2.00	2.10		Steel bending and erection	Nil			
	21-Apr-10	11:25	Cloudy	<1	24.00	24.00	24.00	5.98	6.06	6.02		7.63	7.62	7.63	5.80	5.72	5.76		3.30	2.10	2.70		Steel bending and erection	Nil			
	23-Apr-10	10:02	Fine	<1	23.90	23.90	23.90	5.56	5.59	5.58		7.55	7.56	7.56	4.02	4.11	4.07		2.00	2.00	2.00		Steel bending and erection	Nil			
	26-Apr-10	11:33	Cloudy	<1	23.00	23.00	23.00	5.48	5.52	5.50		7.58	7.58	7.58	5.60	5.53	5.57		2.00	2.30	2.15		Steel bending and erection	Nil			
	28-Apr-10	11:24	Sunny	<1	23.60	23.60	23.60	5.50	5.46	5.48		7.55	7.55	7.55	6.12	6.18	6.15		2.90	2.20	2.55		Steel bending and erection	Nil			
	30-Apr-10	11:25	Sunny	<1	24.70	24.70	24.70	5.43	5.49	5.46		7.55	7.54	7.55	8.96	8.99	8.98		9.00	8.60	8.80		Steel bending and erection	Nil			
Sik Sik Yuen Ho Fung College I-1-C	07-Apr-10	11:45	Rainy	<1	18.00	17.90	17.95	5.74	5.77	5.76	-/-	7.50	7.51	7.51	6.72	6.80	6.76	-/-	4.90	3.90	4.40	-/-	Nil	Nil			
	09-Apr-10	11:38	Cloudy	<1	20.90	20.90	20.90	4.88	4.91	4.90		7.30	7.30	7.30	4.77	4.95	4.86		2.00	2.00	2.00		Nil	Nil			
	12-Apr-10	09:05	Fine	<1	22.40	22.40	22.40	5.48	5.52	5.50		7.60	7.61	7.61	3.18	3.22	3.20		2.00	2.00	2.00		Nil	Nil			
	14-Apr-10	11:20	Fine	<1	23.00	23.00	23.00	5.14	5.17	5.16		7.50	7.51	7.51	4.80	4.88	4.84		2.70	2.70	2.70		Nil	Nil			
	16-Apr-10	11:22	Cloudy	<1	20.10	20.10	20.10	4.76	4.81	4.79		7.60	7.60	7.60	4.99	5.15	5.07		4.50	3.40	3.95		Nil	Nil			
	19-Apr-10	09:55	Cloudy	<1	22.70	22.80	22.75	4.88	4.86	4.87		7.55	7.54	7.55	4.70	4.77	4.74		3.00	2.60	2.80		Nil	Nil			
	21-Apr-10	11:15	Cloudy	<1	23.70	2.70	13.20	5.94	6.00	5.97		7.66	7.66	7.66	6.03	5.95	5.99		4.80	5.90	5.35		Nil	Nil			
	23-Apr-10	09:50	Fine	<1	23.50	23.50	23.50	5.61	5.65	5.63		7.53	7.52	7.53	4.18	4.04	4.11		2.00	2.00	2.00		Nil	Nil			
	26-Apr-10	11:22	Cloudy	<1	22.70	22.70	22.70	5.49	5.47	5.48		7.60	7.60	7.60	5.70	5.62	5.66		2.20	2.60	2.40		Nil	Nil			
	28-Apr-10	11:12	Sunny	<1	23.40	23.40	23.40	5.54	5.60	5.57		7.53	7.53	7.53	6.38	6.44	6.41		2.40	2.80	2.60		Nil	Nil			
	30-Apr-10	11:36	Sunny	<1	25.00	24.90	24.95	5.33	5.37	5.35		7.57	7.58	7.58	8.68	8.80	8.74		8.90	8.80	8.85		Nil	Nil			
Hong Hoi Chee Hong Temple I-2	07-Apr-10	11:16	Rainy	<1	18.00	17.90	17.95	5.53	5.57	5.55	3.66 / 3.63	7.55	7.55	7.55	2.07	2.15	2.11	6.63 / 6.99	2.00	2.00	2.00	7.68 / 8.34	Drilling	Nil			
	09-Apr-10	11:10	Cloudy	<1	20.60	20.60	20.60	4.68	4.73	4.71		7.52	7.50	7.51	1.90	1.92	1.91		2.00	2.00	2.00		Drilling	Nil			
	12-Apr-10	10:00	Fine	<1	23.10	23.00	23.05	5.42	5.38	5.40		7.54	7.53	7.54	1.80	1.87	1.84		2.00	2.00	2.00		Drilling	Nil			
	14-Apr-10	10:49	Fine	<1	23.50	23.50	23.50	4.97	4.93	4.95		7.62	7.61	7.62	2.00	2.03	2.02		2.20	2.40	2.30		Drilling	Nil			
	16-Apr-10	10:54	Cloudy	<1	20.00	20.10	20.05	4.60	4.55	4.58		7.52	7.53	7.53	1.90	1.97	1.94		2.00	2.00	2.00		Drilling	Nil			
	19-Apr-10	10:35	Cloudy	<1	23.10	23.20	23.15	4.95	5.03	4.99		7.64	7.65	7.65	2.00	1.96	1.98		2.00	2.00	2.00		Concrete work	Nil			
	21-Apr-10	10:38	Cloudy	<1	23.70	23.60	23.65	5.65	5.69	5.67		7.50	7.50	7.50	2.02	2.06	2.04		2.00	2.00	2.00		Drilling & concrete work	Nil			
	23-Apr-10	10:46	Fine	<1	24.20	24.20	24.20	5.52	5.47	5.50		7.63	7.62	7.63	2.05	2.13	2.09		2.10	2.70	2.40		Steel bending and erection	Nil			
	26-Apr-10	10:54	Cloudy	<1	23.80	23.80	23.80	5.46	5.42	5.44		7.45	7.46	7.46	1.80	1.84	1.82		2.00	2.00	2.00		Breaker	Nil			
	28-Apr-10	10:30	Sunny	<1	23.80	23.80	23.80	5.53	5.57	5.55		7.57	7.57	7.57	2.22	2.27	2.25		2.00	2.00	2.00		Breaker	Nil			
	30-Apr-10	10:20	Sunny	<1	24.00	24.10	24.05	5.86	5.88	5.87		7.53	7.52	7.53	3.60	3.64	3.62		5.20	3.60	4.40		Drilling	Nil			
Hong Hoi Chee Hong Temple I-2-C	07-Apr-10	11:05	Rainy	<1	17.80	17.80	17.80	5.53	5.59	5.56	-/-	7.56	7.56	7.56	2.18	2.31	2.25	-/-	2.00	2.00	2.00	-/-	Nil	Nil			
	09-Apr-10	11:00	Cloudy	<1	20.80	20.80	20.80	4.77	4.72	4.75		7.50	7.51	7.51	2.00	2.07	2.04		2.00	2.00	2.00		Nil	Nil			
	12-Apr-10	09:50	Fine	<1	22.80	22.80	22.80	5.45	5.40	5.43		7.55	7.56	7.56	1.92	1.97	1.95		2.00	2.10	2.05		Nil	Nil			
	14-Apr-10	10:38	Fine	<1	24.00	24.00	24.00	4.98	5.04	5.01		7.60	7.61	7.61	2.04	2.11	2.08		2.40	2.70	2.55		Nil	Nil			
	16-Apr-10	10:40	Cloudy	<1	20.70	20.70	20.70	4.67	4.73	4.70		7.55	7.54	7.55	2.05	1.99	2.02		2.00	2.00	2.00		Nil	Nil			
	19-Apr-10	10:25	Cloudy	<1	23.00	23.00	23.00	4.90	4.93	4.92		7.60	7.60	7.60	2.05	2.13	2.09		2.00	2.00	2.00		Nil	Nil			
	21-Apr-10	10:38	Cloudy	<1	24.10	24.00	24.05	5.83	5.78	5.81		7.55	7.54	7.55	2.07	2.15	2.11		2.00	2.00	2.00		Nil	Nil			
	23-Apr-10	10:35	Fine	<1	23.90	24.00	23.95	5.54	5.58	5.56		7.61	7.60	7.61	2.07	2.14	2.11		2.70	2.90	2.80		Nil	Nil			
	26-Apr-10	10:40	Cloudy	<1	23.30	23.30	23.30	5.47	5.41	5.44		7.50	7.49	7.50	1.90	1.88	1.89		2.00	2.00	2.00		Nil	Nil			
	28-Apr-10	10:18	Sunny	<1	24.00	24.00	24.00	5.54	5.50	5.52		7.55	7.55	7.55	2.40	2.33	2.37		2.00	2.00	2.00		Nil	Nil			
	30-Apr-10	10:30	Sunny	<1	24.30	24.30	24.30	5.90	5.94	5.92		7.55	7.56	7.56	3.74	3.85	3.80		5.10	4.80	4.95		Nil	Nil			
Squatters I-3	07-Apr-10	10:30	Rainy	<1	18.20	18.20	18.20	5.52	5.52	5.52	3.65 / 3.51	7.58	7.59	7.59	2.70	2.72	2.71	3.99 / 4.18	2.00	2.00	2.00	6.13 / 7.23	Breaking by backhoe, excavation work	Nil			
	09-Apr-10	10:18	Cloudy	<1	20.80	20.80	20.80	4.66	4.70	4.68		7.48	7.49	7.49	1.80	1.84	1.82		2.00	2.00	2.00		Breaking by backhoe, excavation work	Nil			
	12-Apr-10	10:52	Fine	<1	23.30	23.40	23.35	5.40	5.46	5.43		7.60	7.60	7.60	1.72	1.83	1.78		2.00	2.00	2.00		Breaking by backhoe, excavation work	Nil			
	14-Apr-10	10:00	Fine	<1	24.00	24.00	24.00	4.77	4.81	4.79		7.60	7.60	7.60	1.90	1.94	1.92		2.00	2.00	2.00		Breaking by backhoe, excavation work	Nil			
	16-Apr-10	10:02	Cloudy	<1	20.50	20.50	20.50	4.66	4.64	4.65		7.50	7.50	7.50	2.07	2.17	2.12		2.00	2.00	2.00		Breaking & excavation work	Nil			

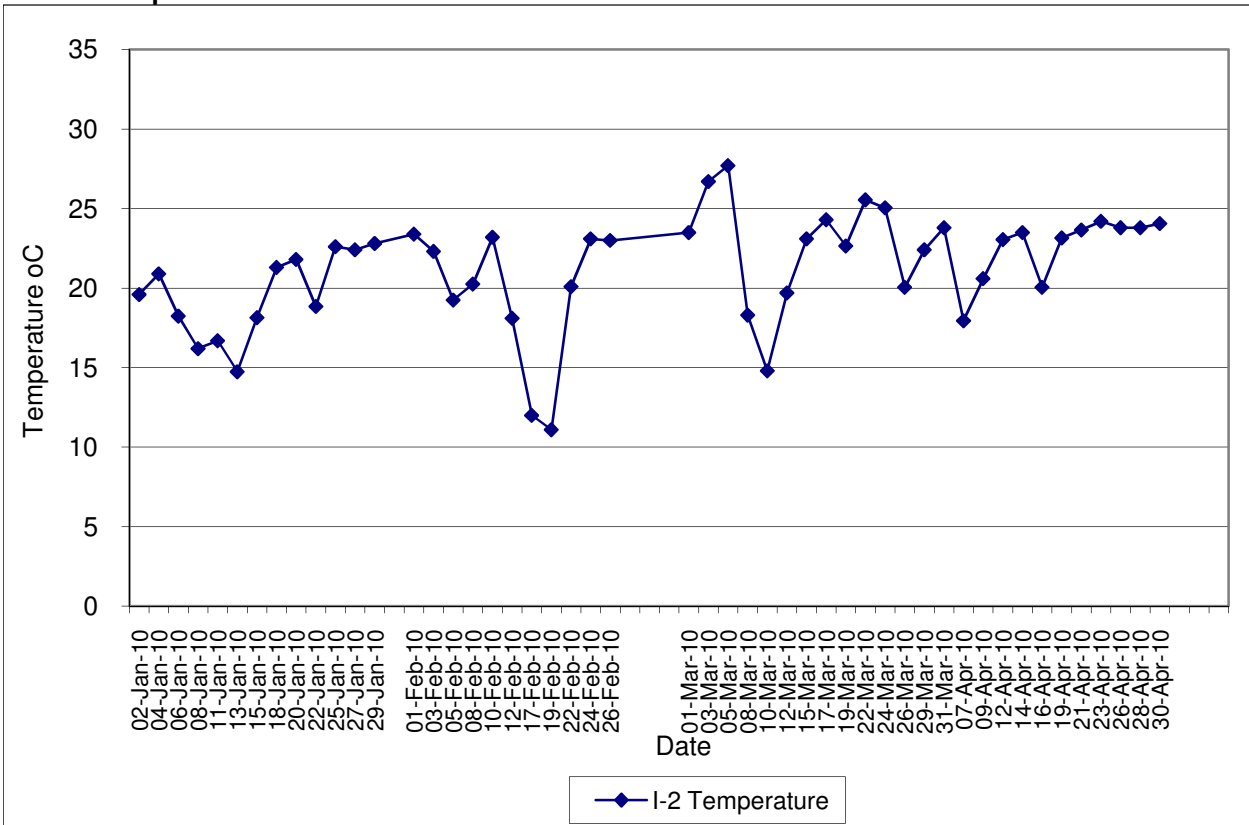
Contract No. DC/2007/12 - Design and Construction of Tsuen Wan Drainage Tunnel
Water Quality Results at Sik Sik Yuen Ho Fung College (I-1)
Jan-10 to Apr-10



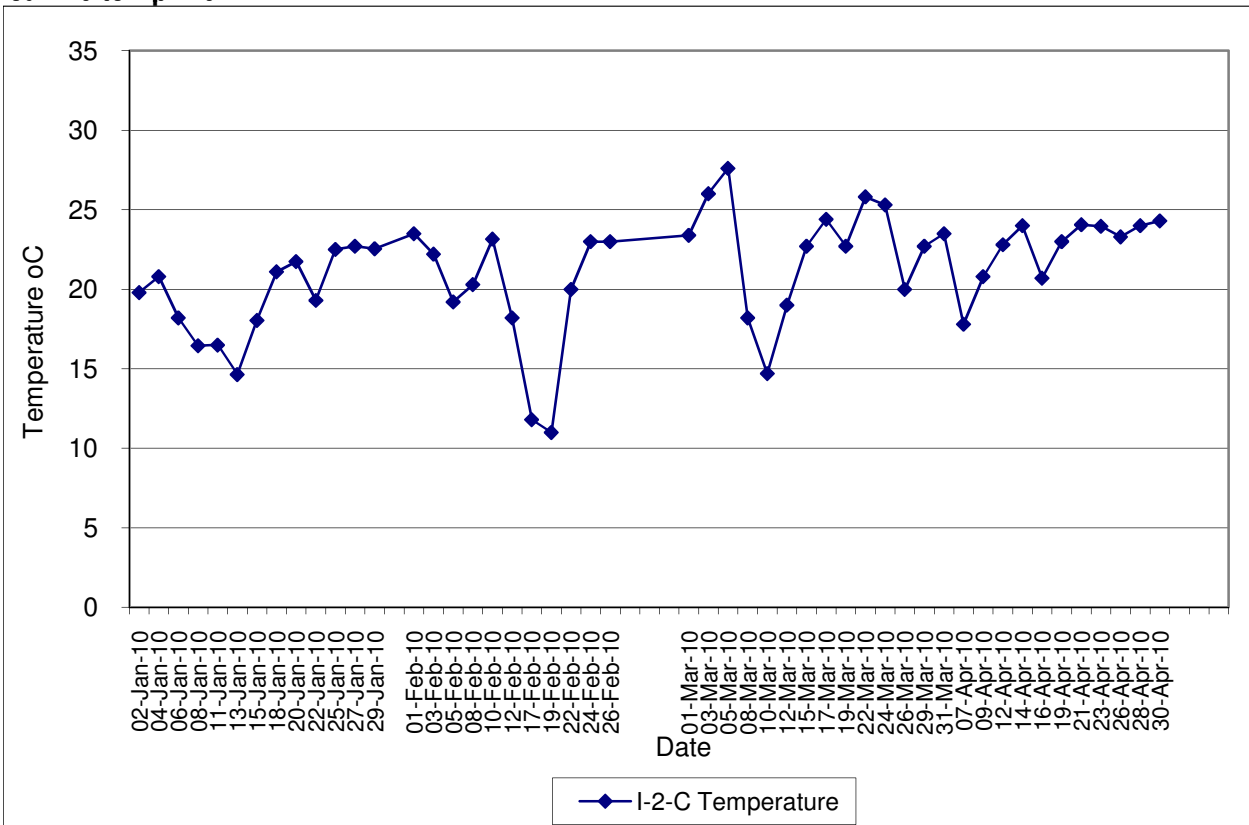
Contract No. DC/2007/12 - Design and Construction of Tsuen Wan Drainage Tunnel
Water Quality Results at Sik Sik Yuen Ho Fung College (I-1-C)
Jan-10 to Apr-10



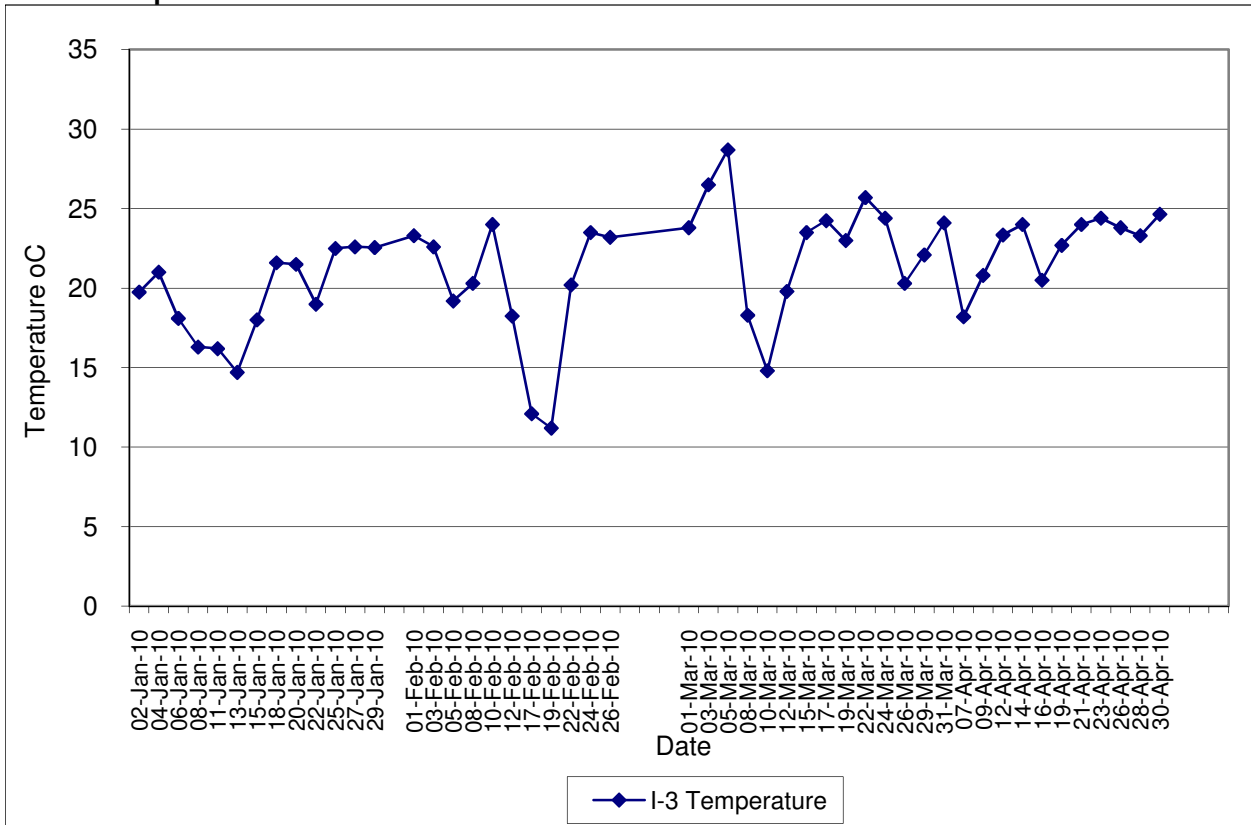
Contract No. DC/2007/12 - Design and Construction of Tsuen Wan Drainage Tunnel
Water Quality Results at Hong Hoi Chee Hong Temple (I-2)
Jan-10 to Apr-10



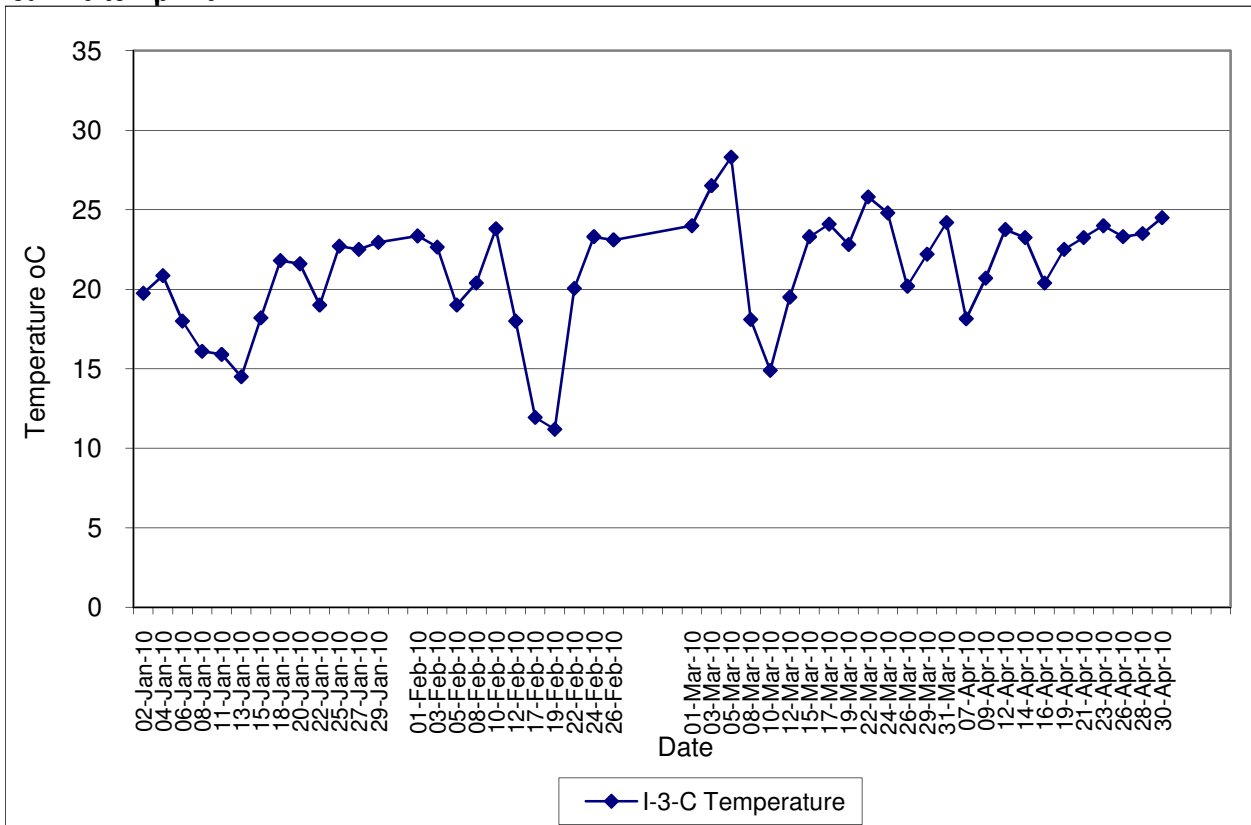
Contract No. DC/2007/12 - Design and Construction of Tsuen Wan Drainage Tunnel
Water Quality Results at Hong Hoi Chee Hong Temple (I-2-C)
Jan-10 to Apr-10



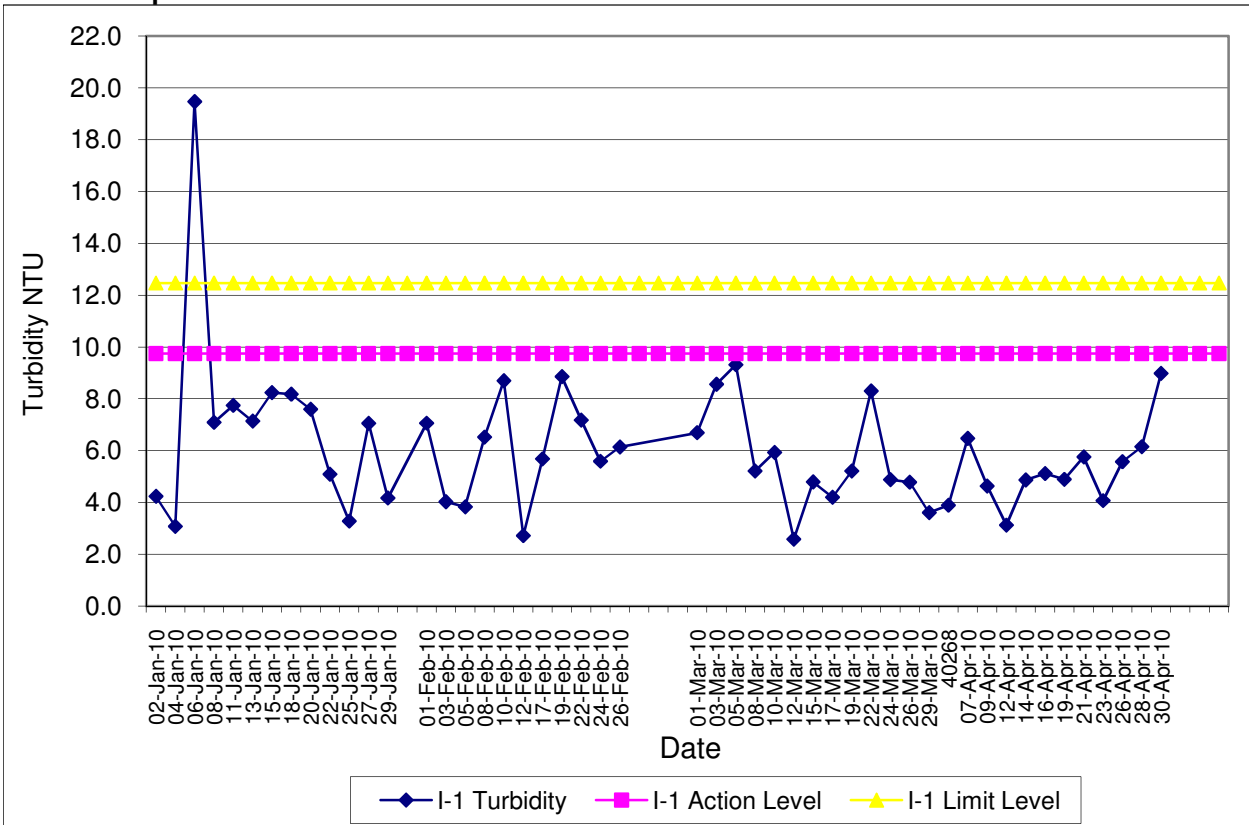
Contract No. DC/2007/12 - Design and Construction of Tsuen Wan Drainage Tunnel
Water Quality Results at Squatters (I-3)
Jan-10 to Apr-10



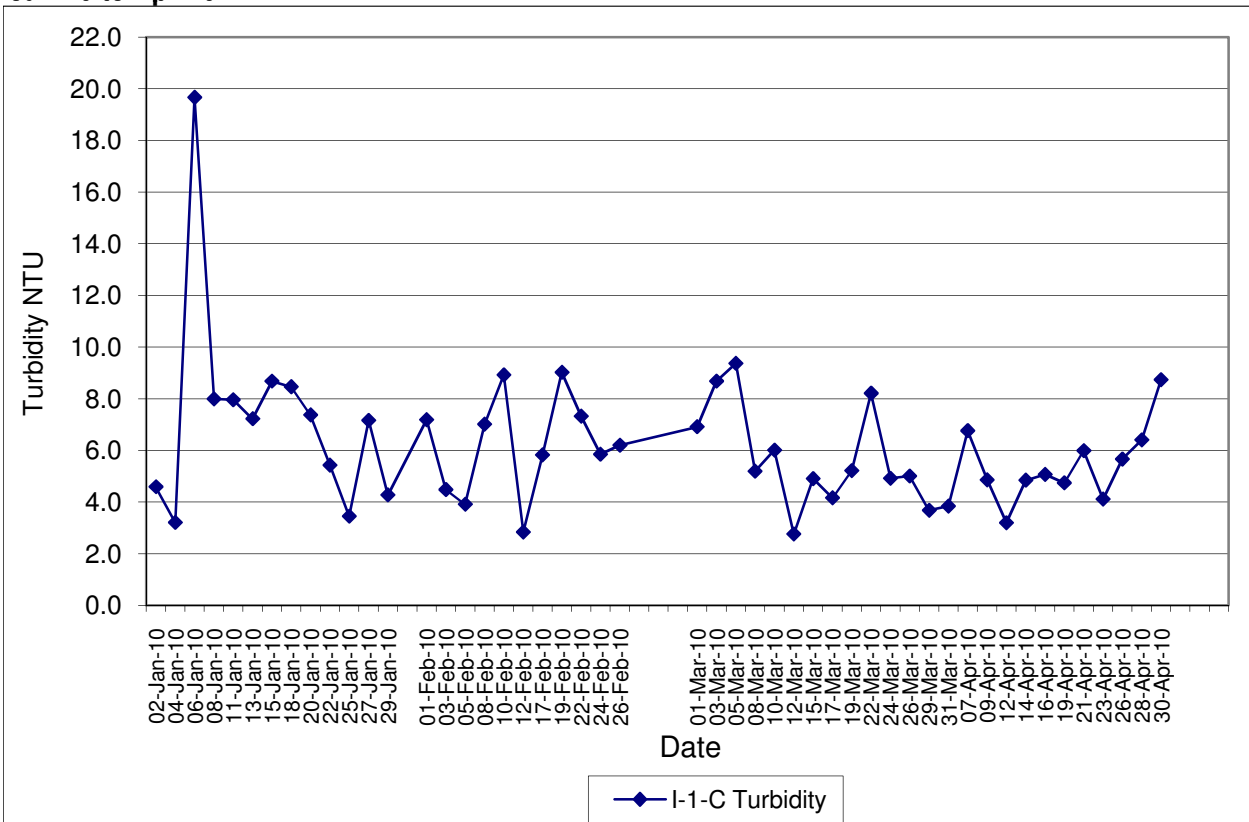
Contract No. DC/2007/12 - Design and Construction of Tsuen Wan Drainage Tunnel
Water Quality Results at Squatters (I-3-C)
Jan-10 to Apr-10



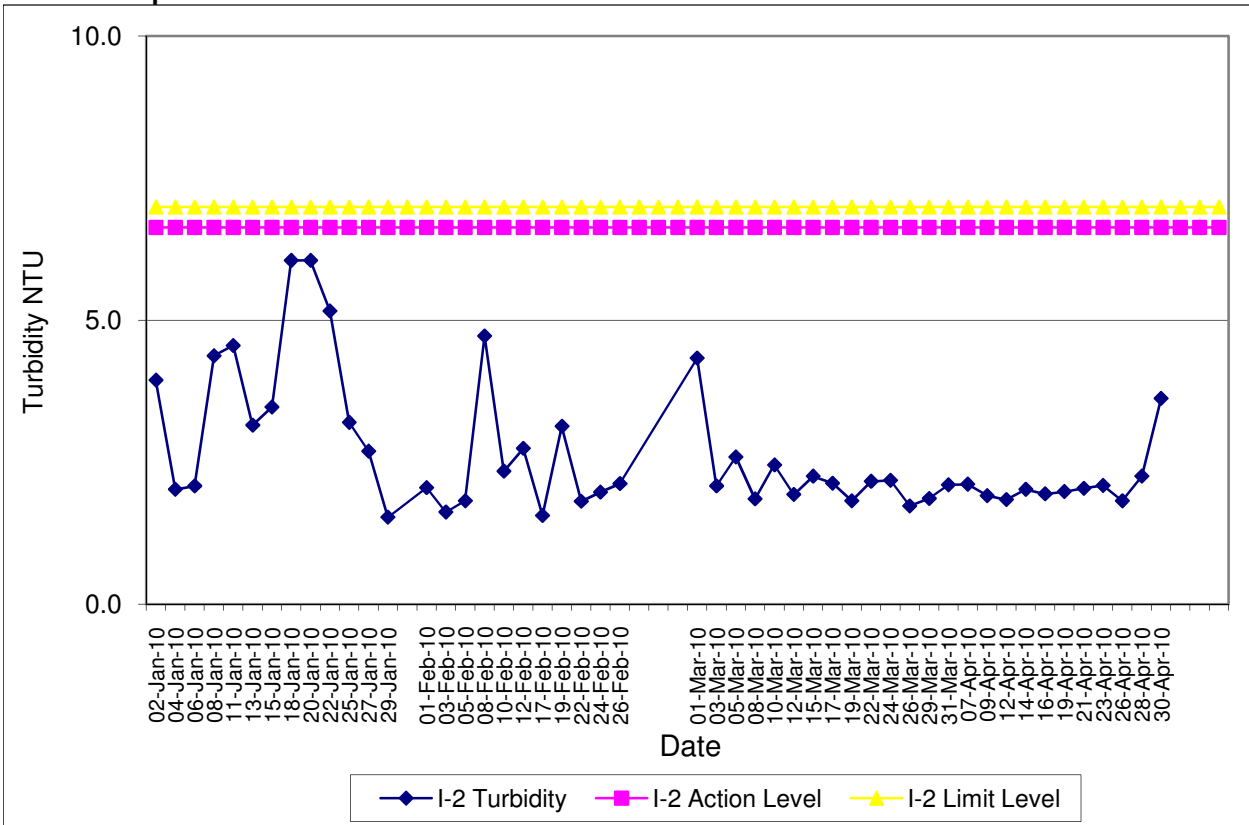
**Contract No. DC/2007/12 - Design and Construction of Tsuen Wan Drainage Tunnel
 Water Quality Results at Sik Sik Yuen Ho Fung College (I-1)
 Jan-10 to Apr-10**



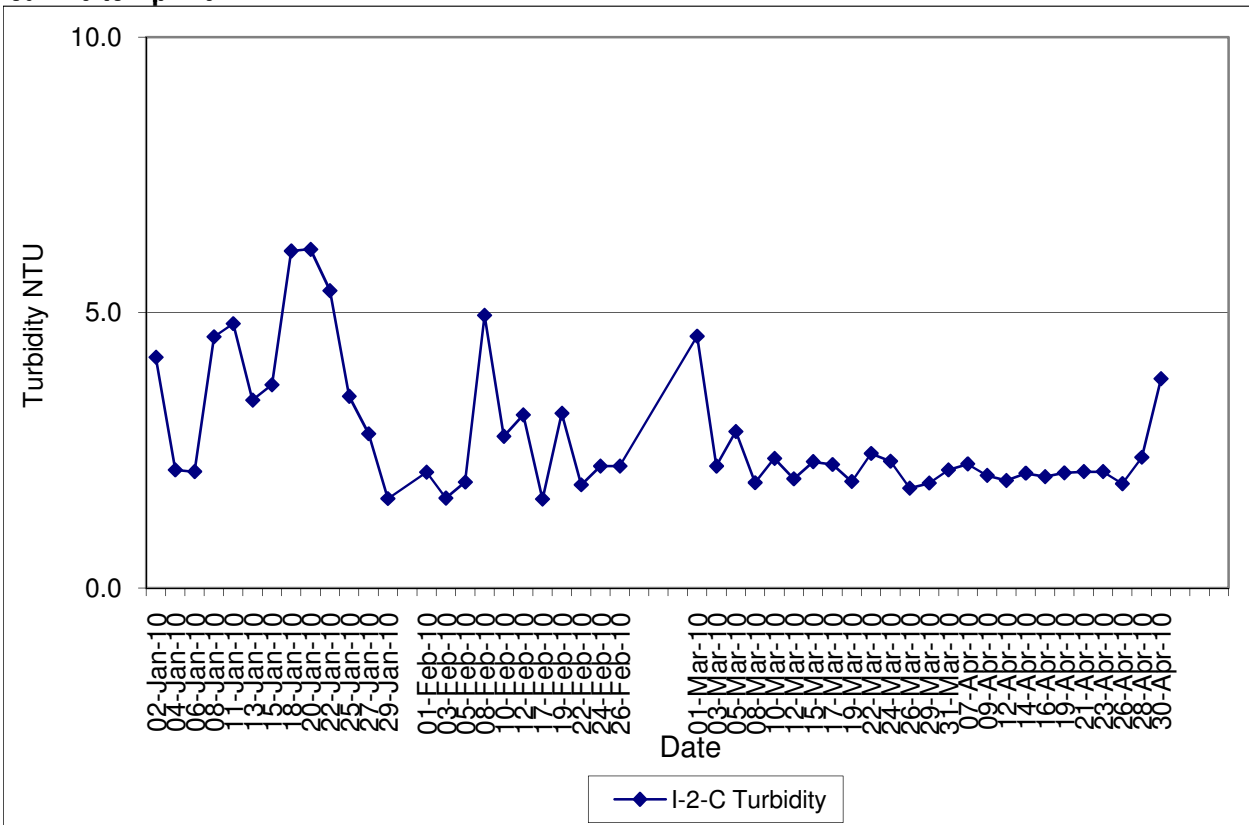
**Contract No. DC/2007/12 - Design and Construction of Tsuen Wan Drainage Tunnel
 Water Quality Results at Sik Sik Yuen Ho Fung College (I-1-C)
 Jan-10 to Apr-10**



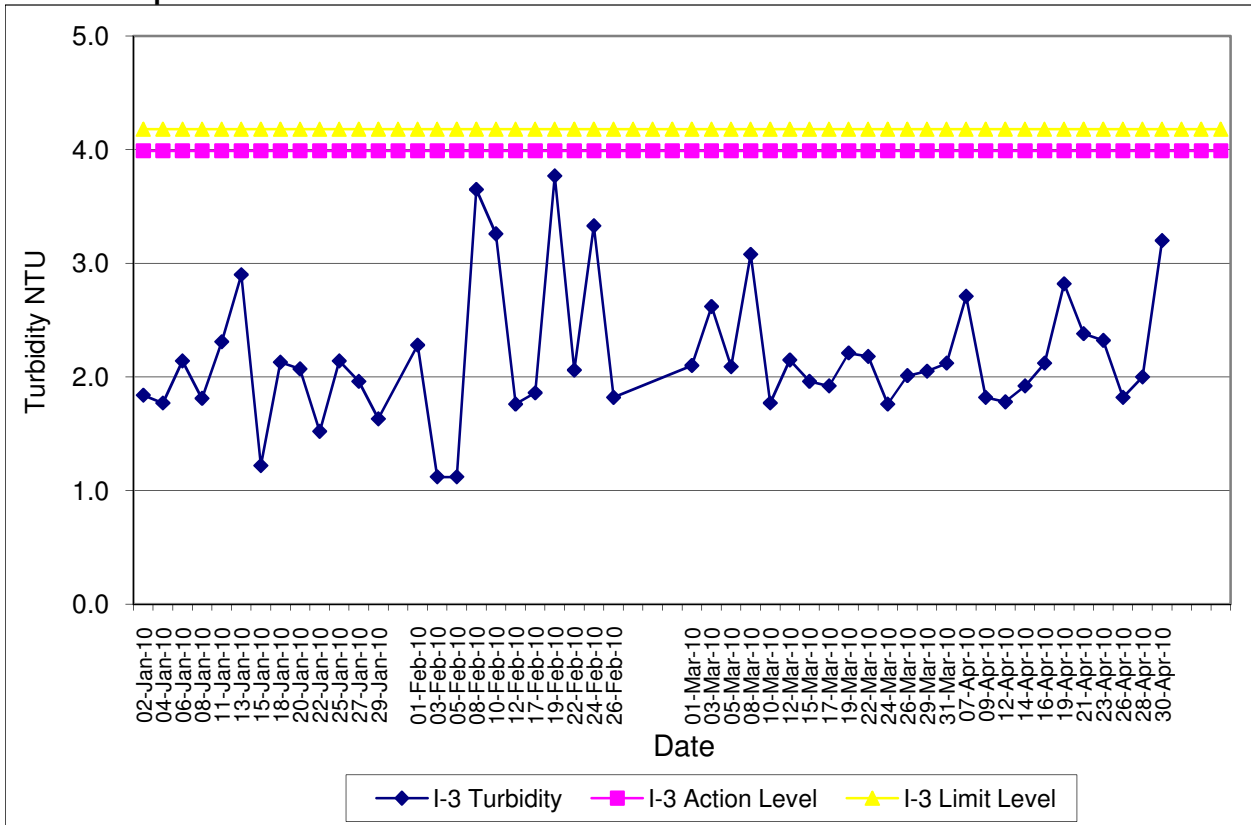
Contract No. DC/2007/12 - Design and Construction of Tsuen Wan Drainage Tunnel
Water Quality Results at Hong Hoi Chee Hong Temple (I-2)
Jan-10 to Apr-10



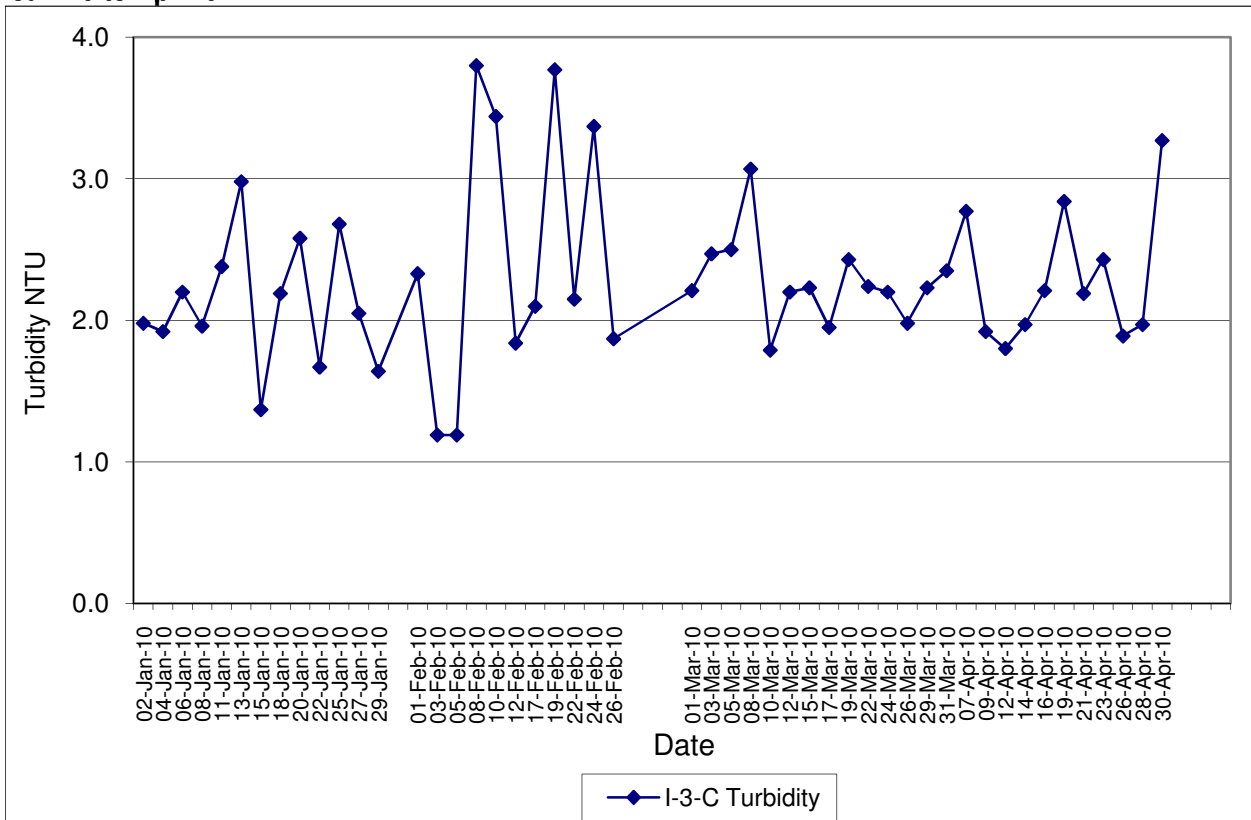
Contract No. DC/2007/12 - Design and Construction of Tsuen Wan Drainage Tunnel
Water Quality Results at Hong Hoi Chee Hong Temple (I-2-C)
Jan-10 to Apr-10



Contract No. DC/2007/12 - Design and Construction of Tsuen Wan Drainage Tunnel
Water Quality Results at Squatters (I-3)
Jan-10 to Apr-10

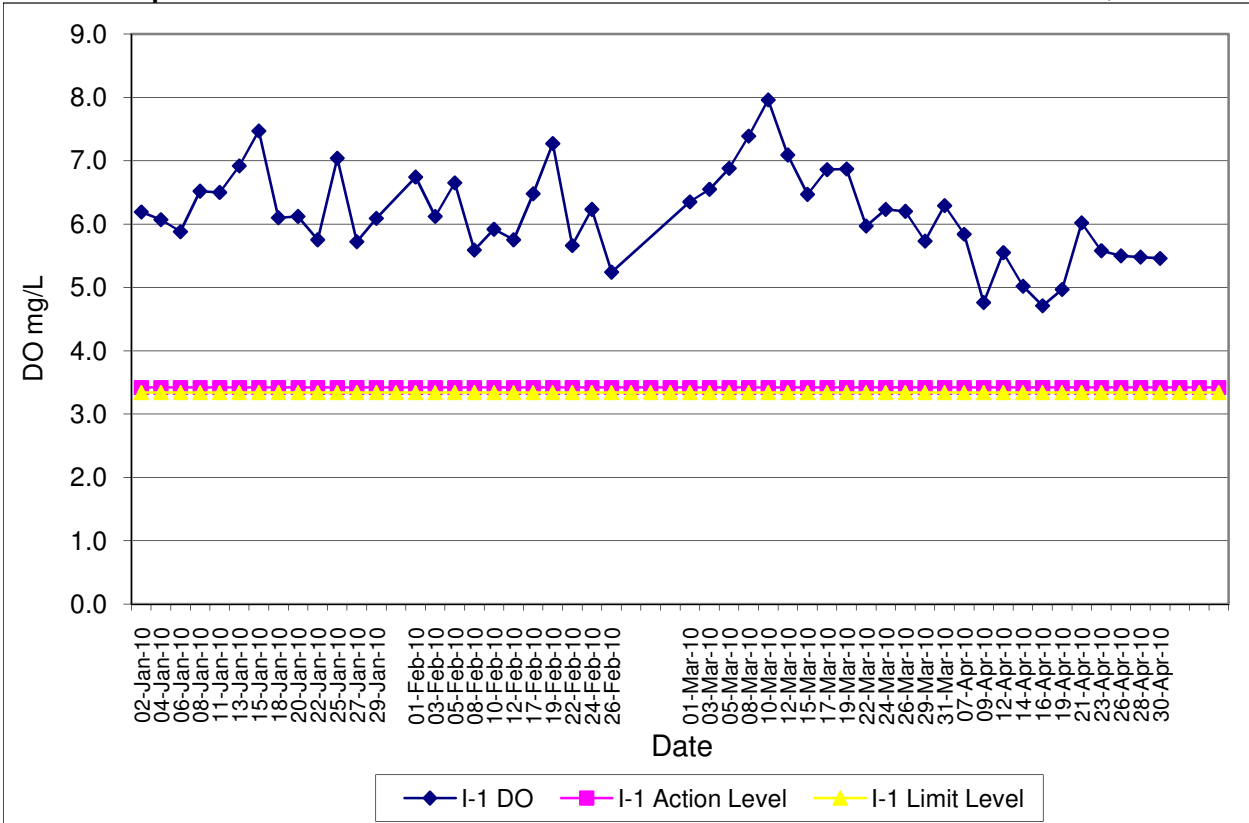


Contract No. DC/2007/12 - Design and Construction of Tsuen Wan Drainage Tunnel
Water Quality Results at Squatters (I-3-C)
Jan-10 to Apr-10

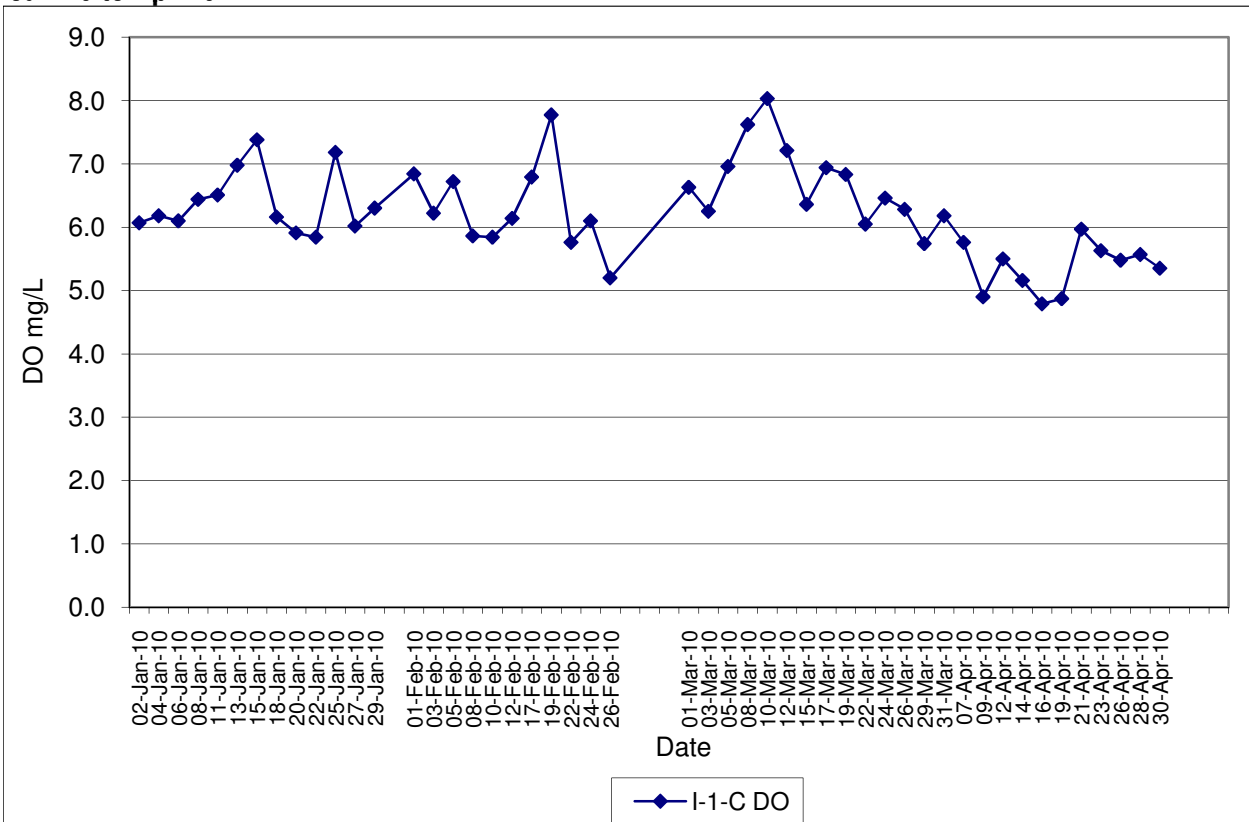


Contract No. DC/2007/12 - Design and Construction of Tsuen Wan Drainage Tunnel
Water Quality Results at Sik Sik Yuen Ho Fung College (I-1)
Jan-10 to Apr-10

Note: Exceedances of Action / Limit Levels occur when the levels of DO are below the respective limit levels.

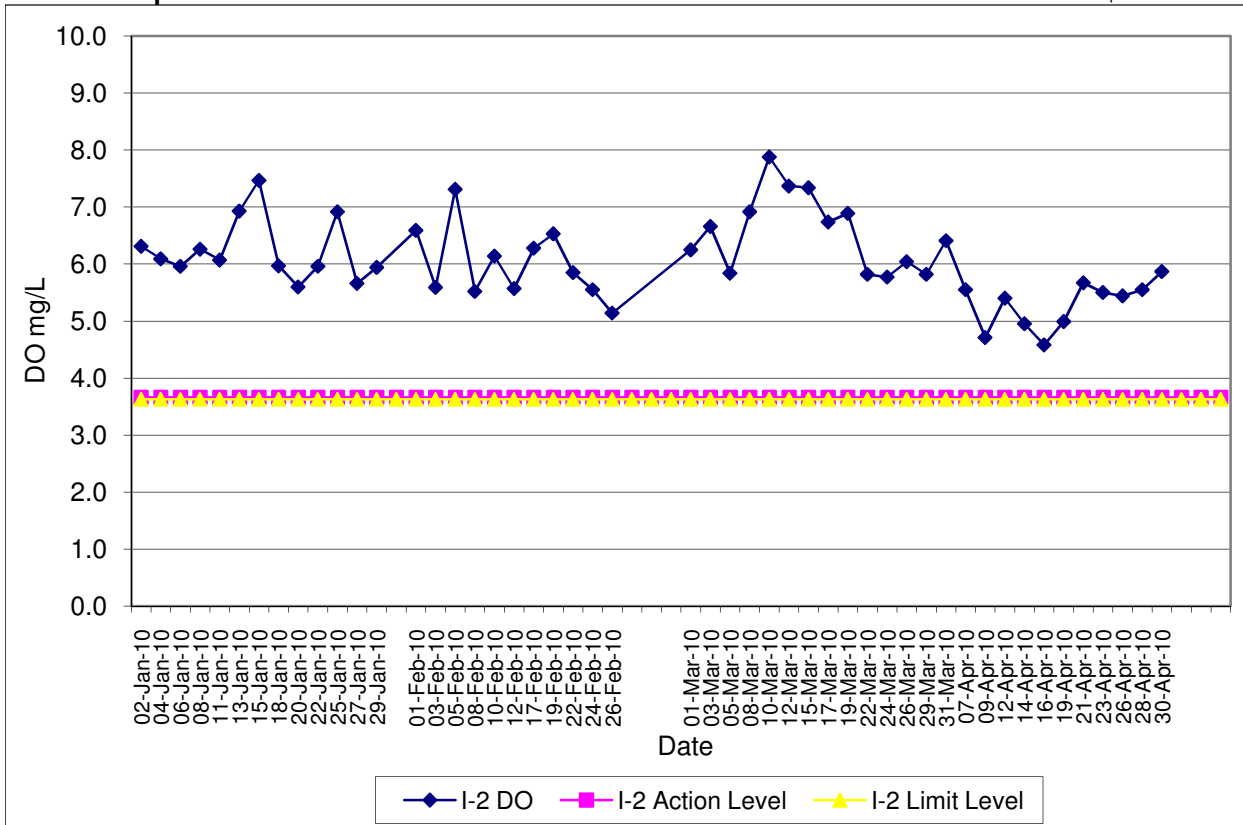


Contract No. DC/2007/12 - Design and Construction of Tsuen Wan Drainage Tunnel
Water Quality Results at Sik Sik Yuen Ho Fung College (I-1-C)
Jan-10 to Apr-10

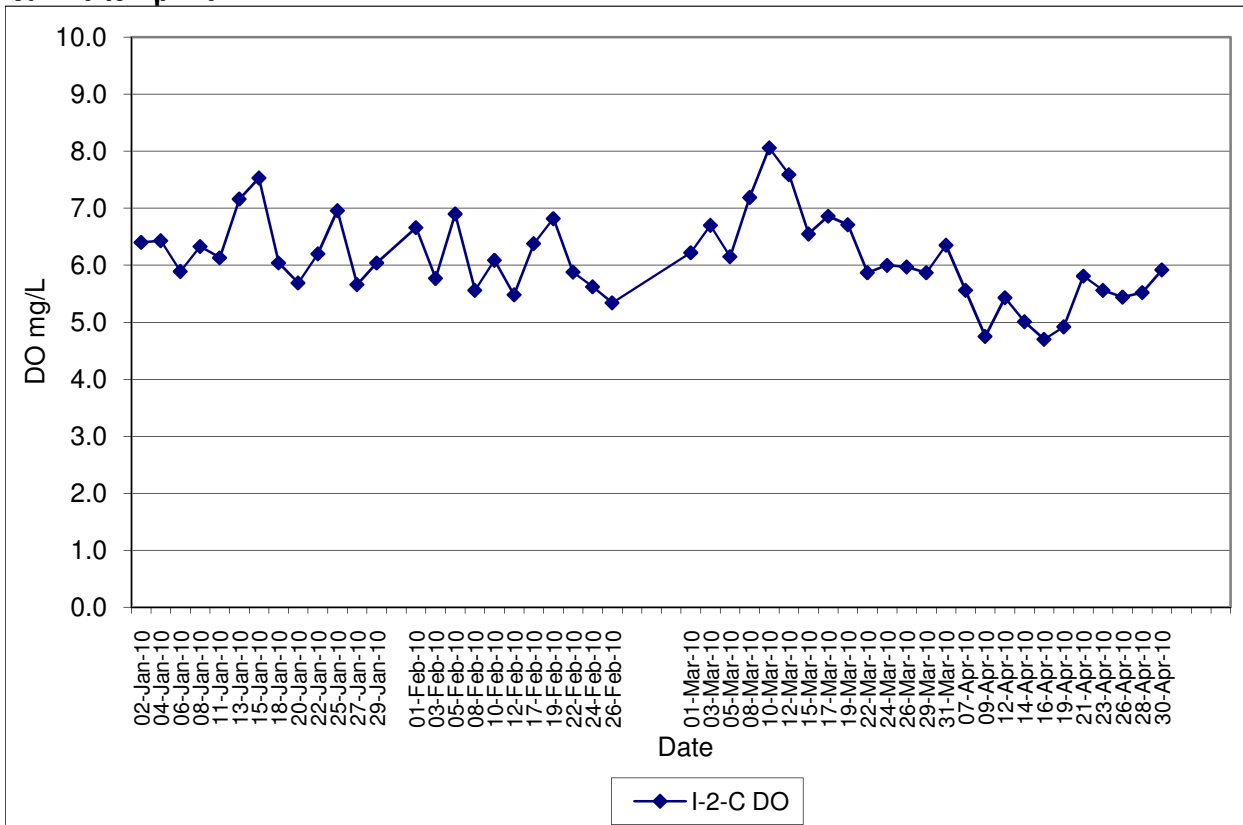


Contract No. DC/2007/12 - Design and Construction of Tsuen Wan Drainage Tunnel
Water Quality Results at Hong Hoi Chee Hong Temple (I-2)
Jan-10 to Apr-10

Note: Exceedances of Action / Limit Levels occur when the levels of DO are below the respective limit levels.

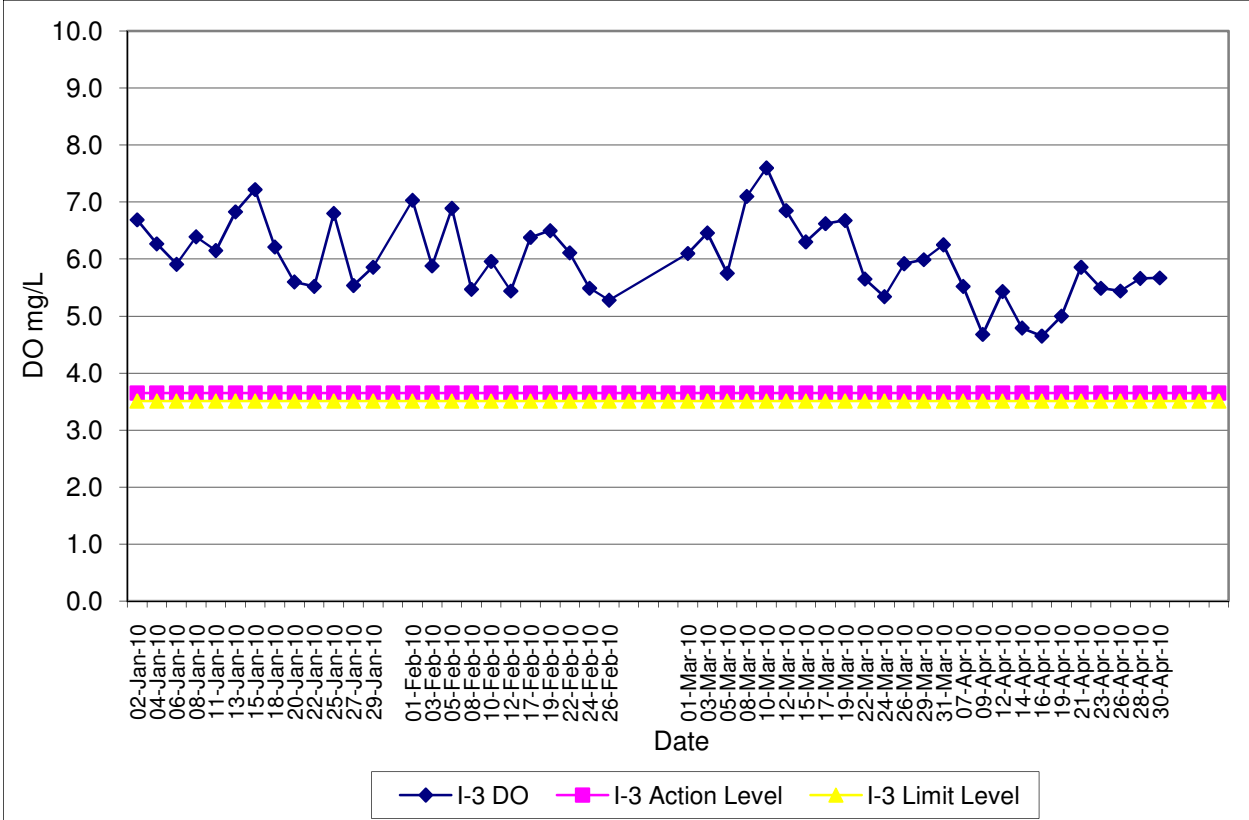


Contract No. DC/2007/12 - Design and Construction of Tsuen Wan Drainage Tunnel
Water Quality Results at Hong Hoi Chee Hong Temple (I-2-C)
Jan-10 to Apr-10

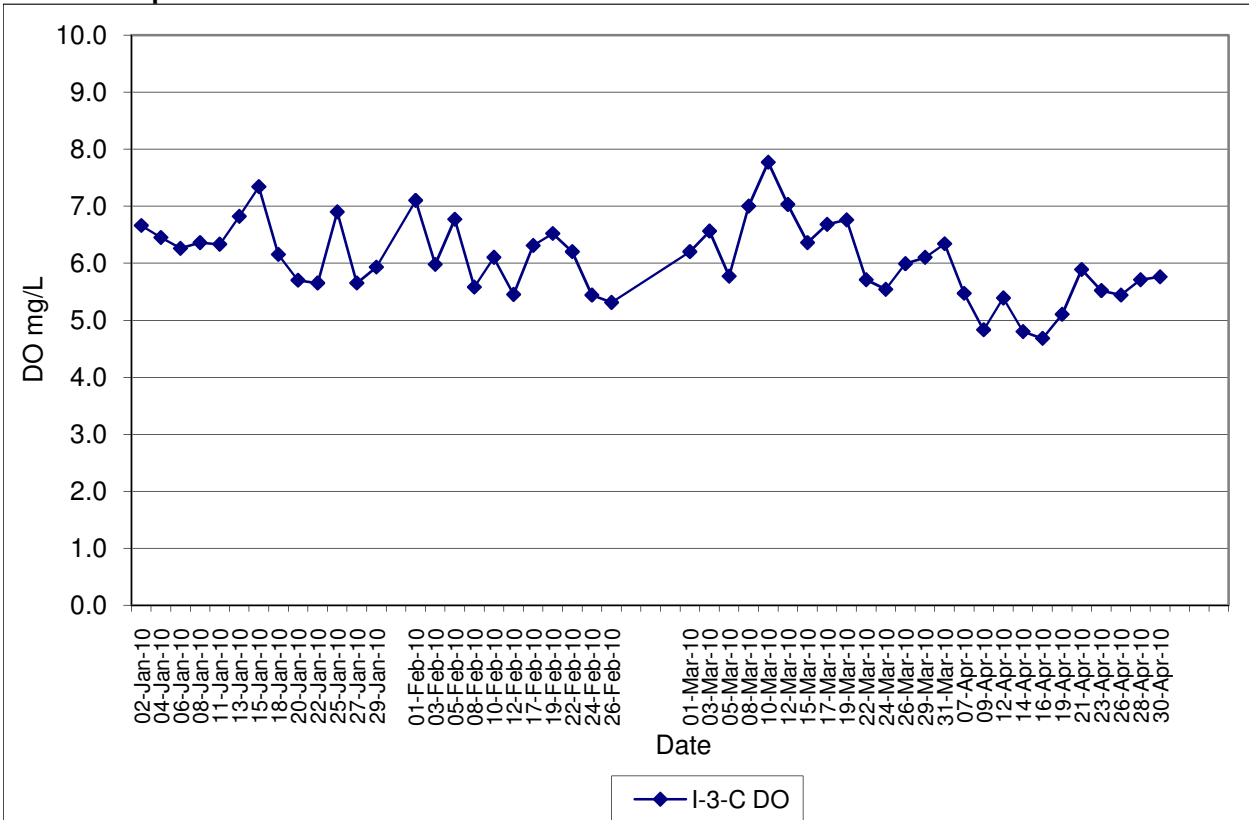


Contract No. DC/2007/12 - Design and Construction of Tsuen Wan Drainage Tunnel
Water Quality Results at Squatters (I-3)
Jan-10 to Apr-10

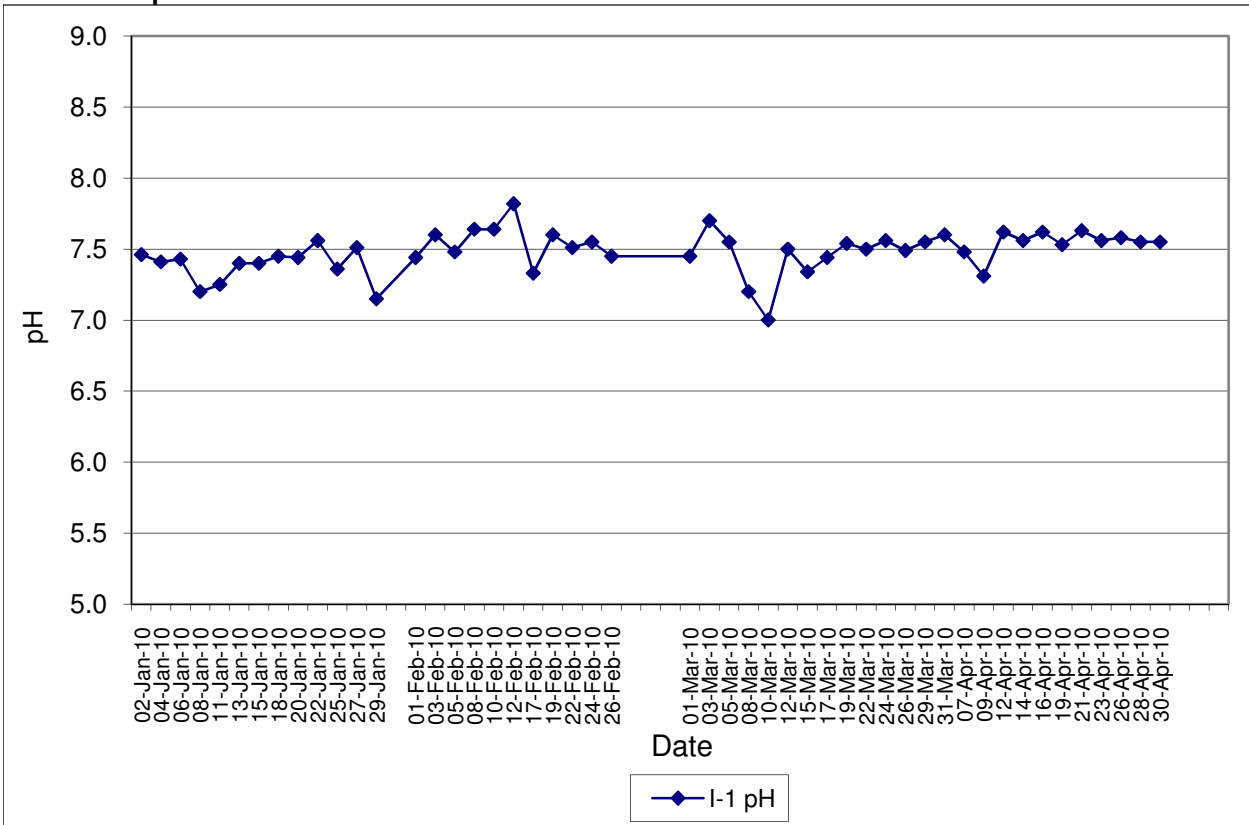
Note: Exceedances of Action / Limit Levels occur when the levels of DO are below the respective limit levels.



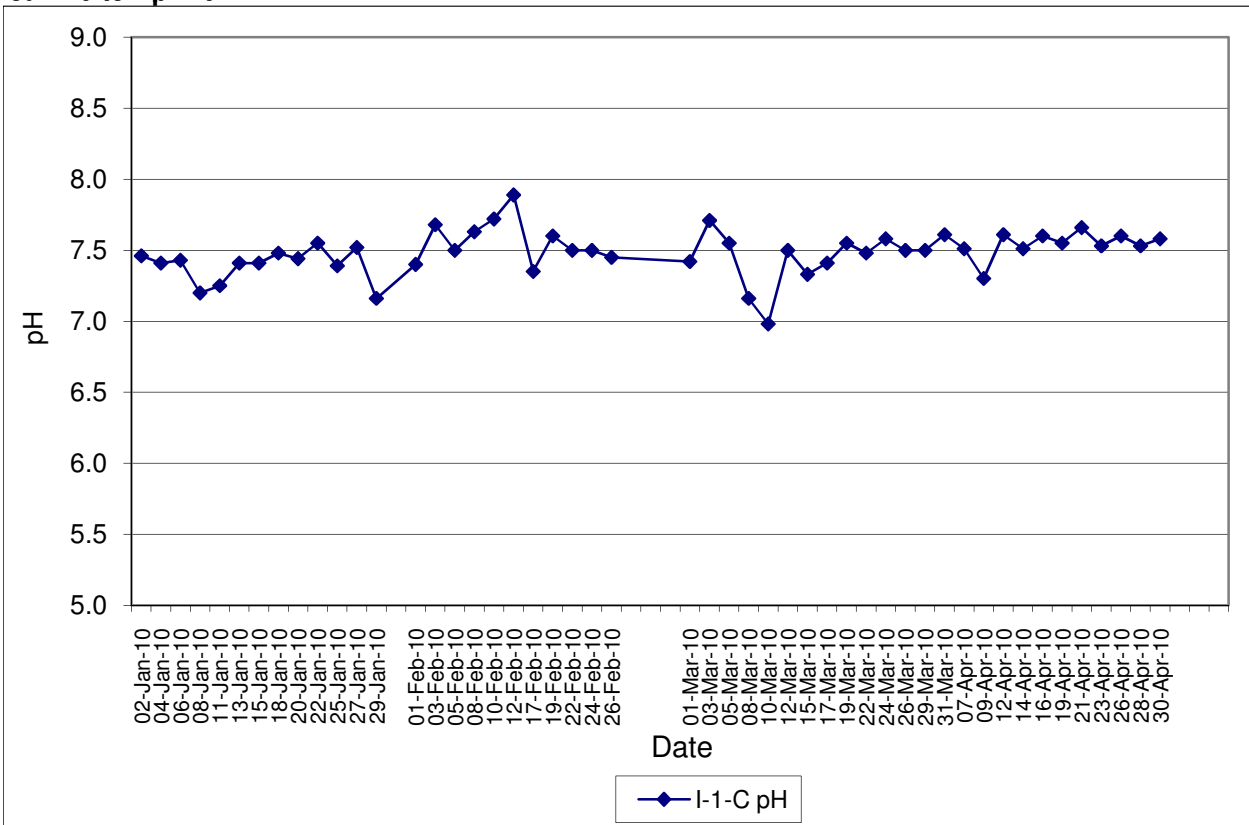
Contract No. DC/2007/12 - Design and Construction of Tsuen Wan Drainage Tunnel
Water Quality Results at Squatters (I-3-C)
Jan-10 to Apr-10



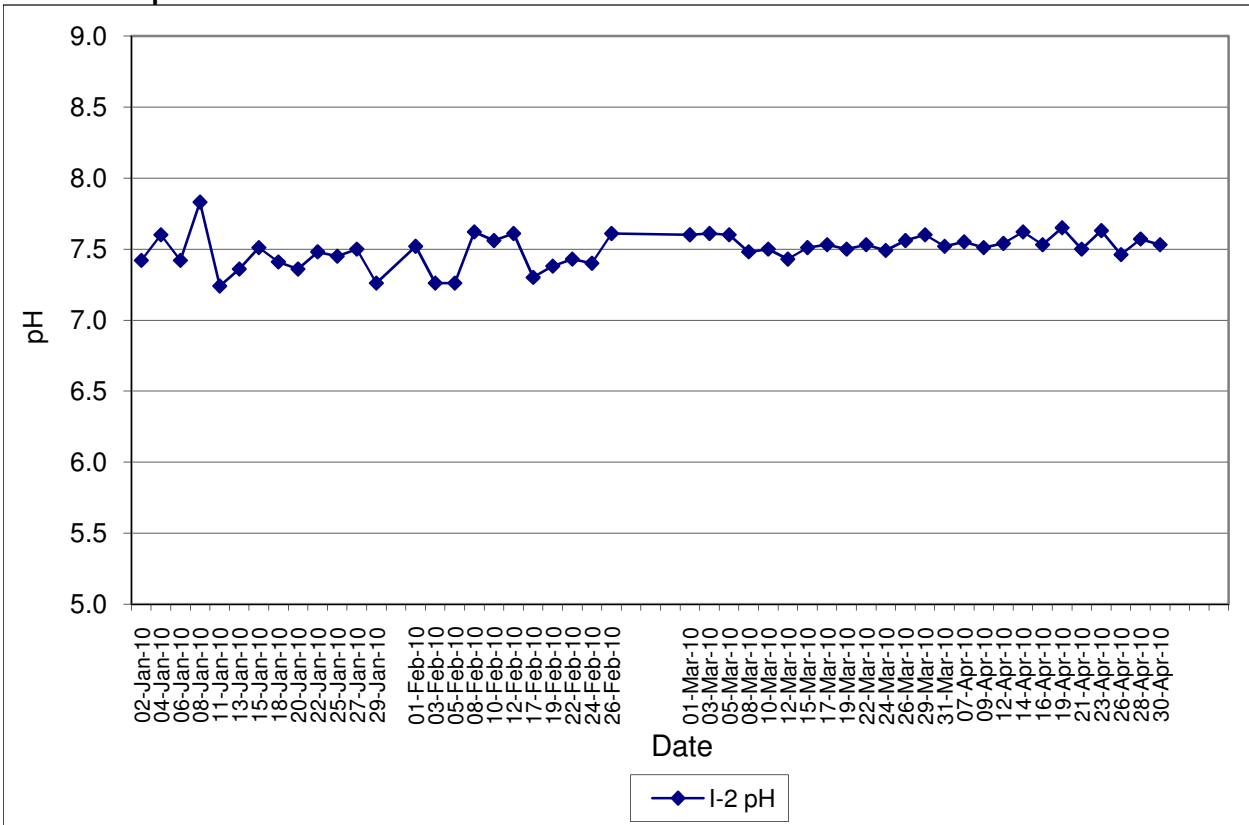
Contract No. DC/2007/12 - Design and Construction of Tsuen Wan Drainage Tunnel
Water Quality Results at Sik Sik Yuen Ho Fung College (I-1)
Jan-10 to Apr-10



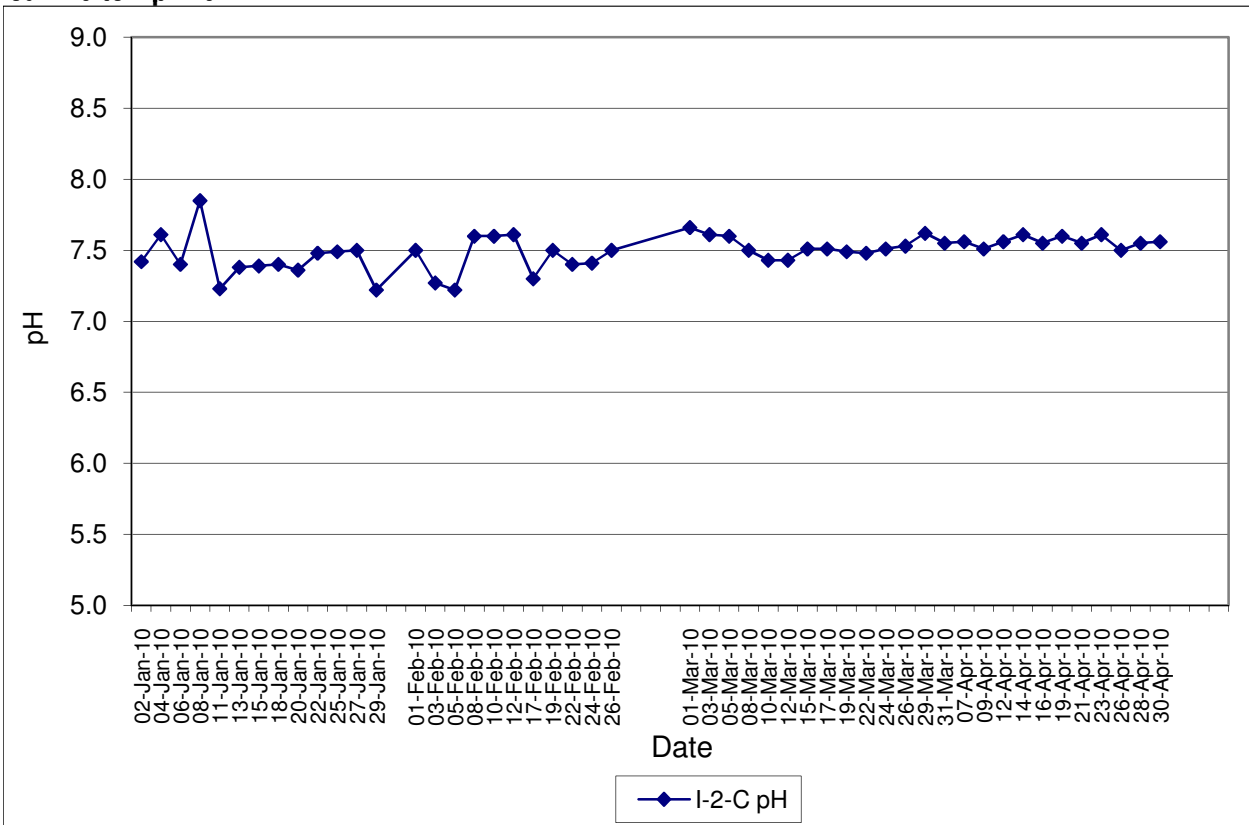
Contract No. DC/2007/12 - Design and Construction of Tsuen Wan Drainage Tunnel
Water Quality Results at Sik Sik Yuen Ho Fung College (I-1-C)
Jan-10 to Apr-10



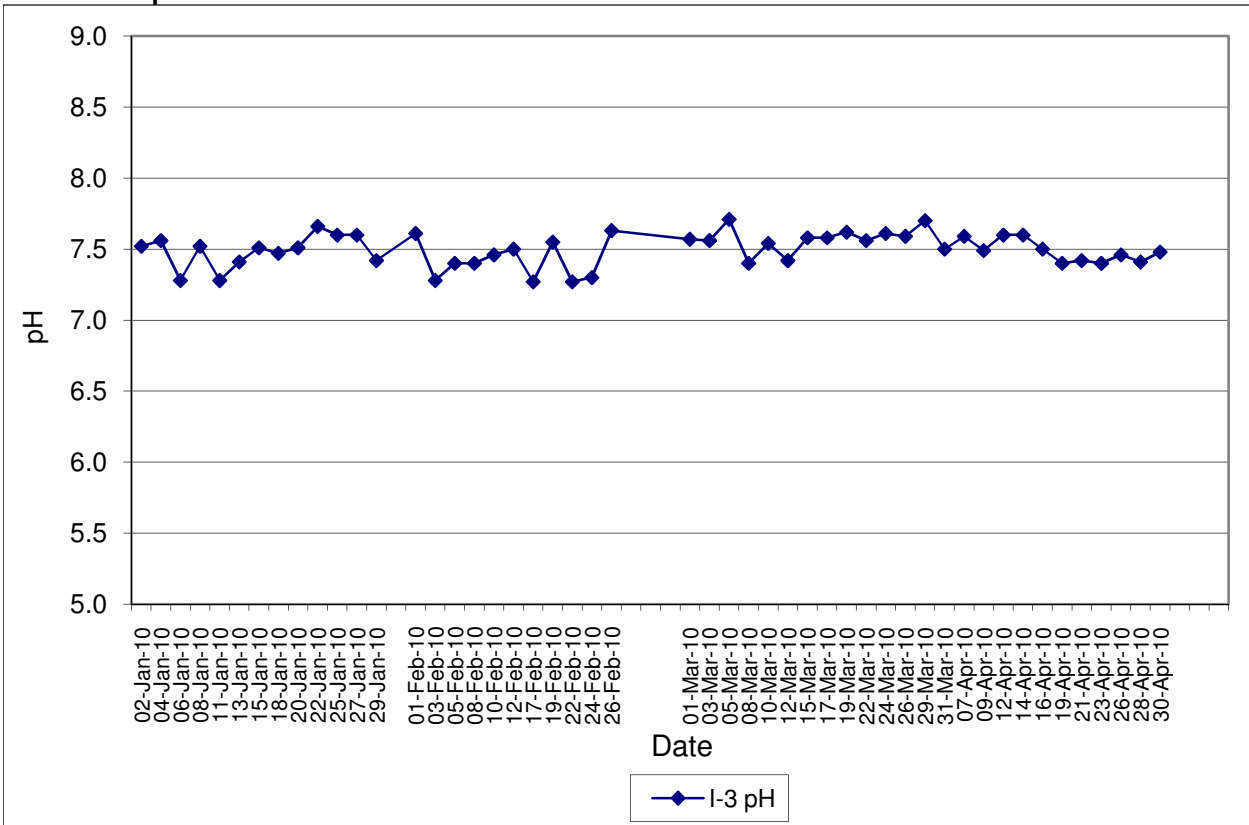
Contract No. DC/2007/12 - Design and Construction of Tsuen Wan Drainage Tunnel
Water Quality Results at Hong Hoi Chee Hong Temple (I-2)
Jan-10 to Apr-10



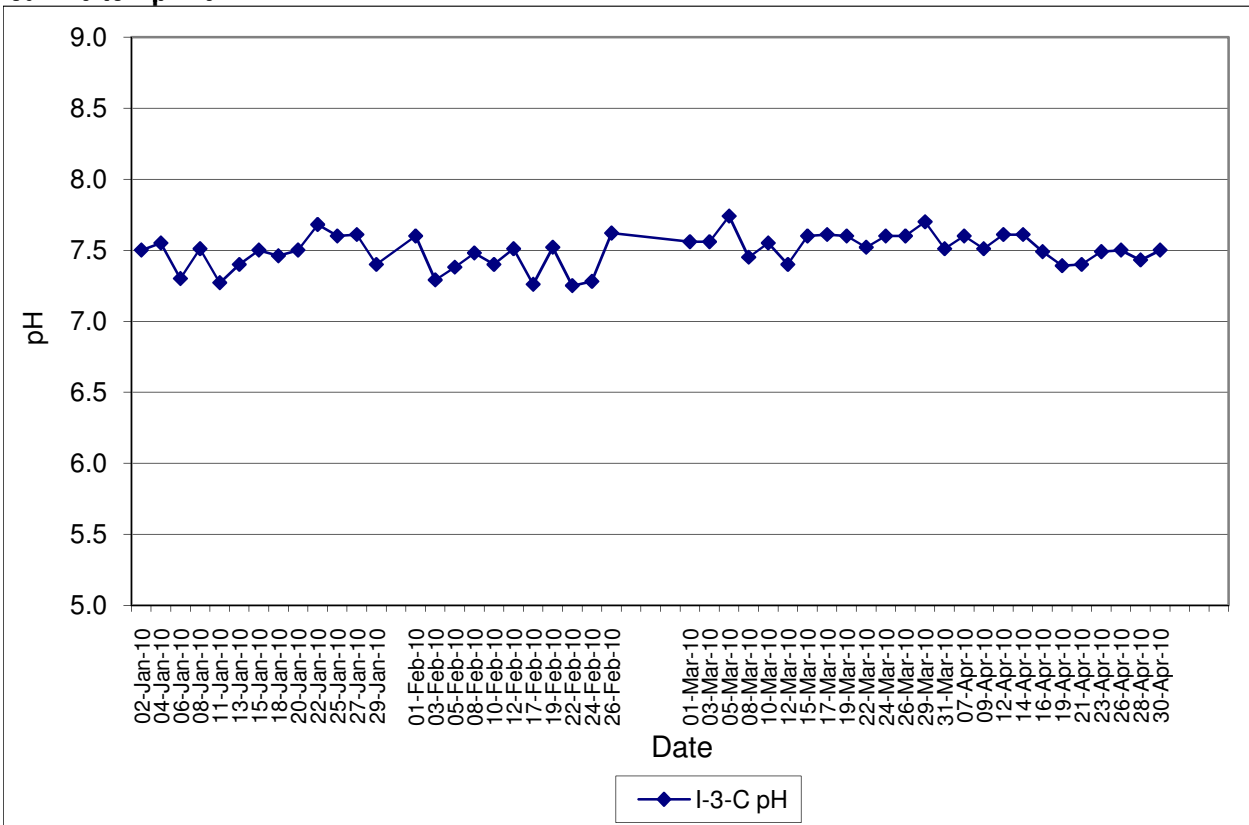
Contract No. DC/2007/12 - Design and Construction of Tsuen Wan Drainage Tunnel
Water Quality Results at Hong Hoi Chee Hong Temple (I-2-C)
Jan-10 to Apr-10



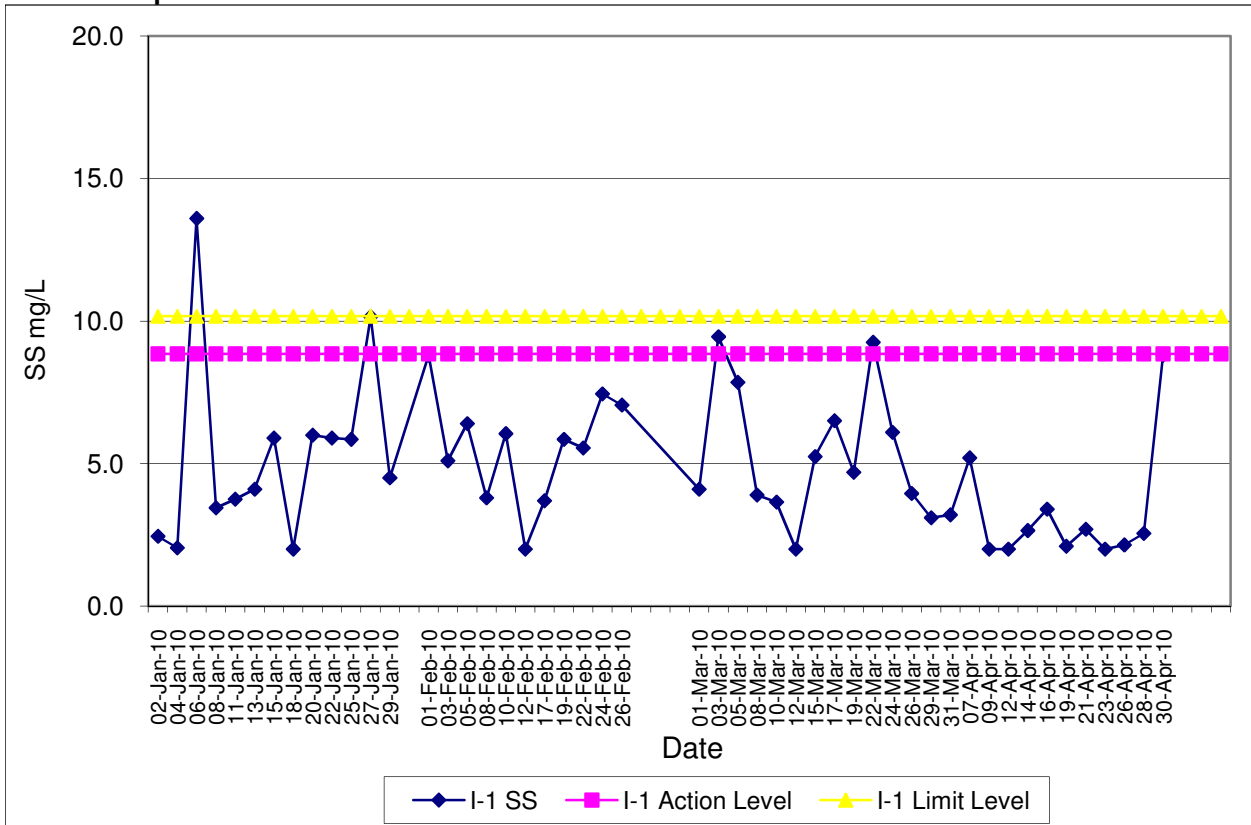
Contract No. DC/2007/12 - Design and Construction of Tsuen Wan Drainage Tunnel
Water Quality Results at Squatters (I-3)
Jan-10 to Apr-10



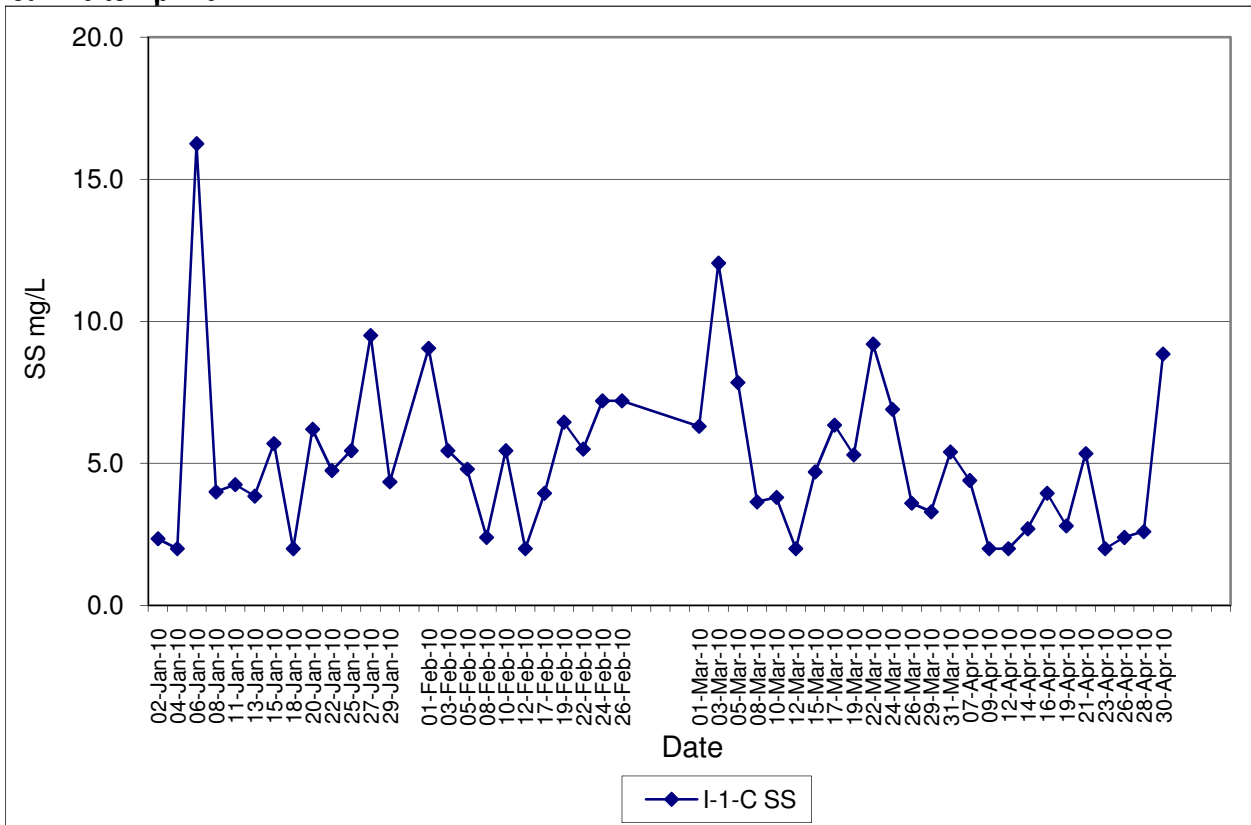
Contract No. DC/2007/12 - Design and Construction of Tsuen Wan Drainage Tunnel
Water Quality Results at Squatters (I-3-C)
Jan-10 to Apr-10



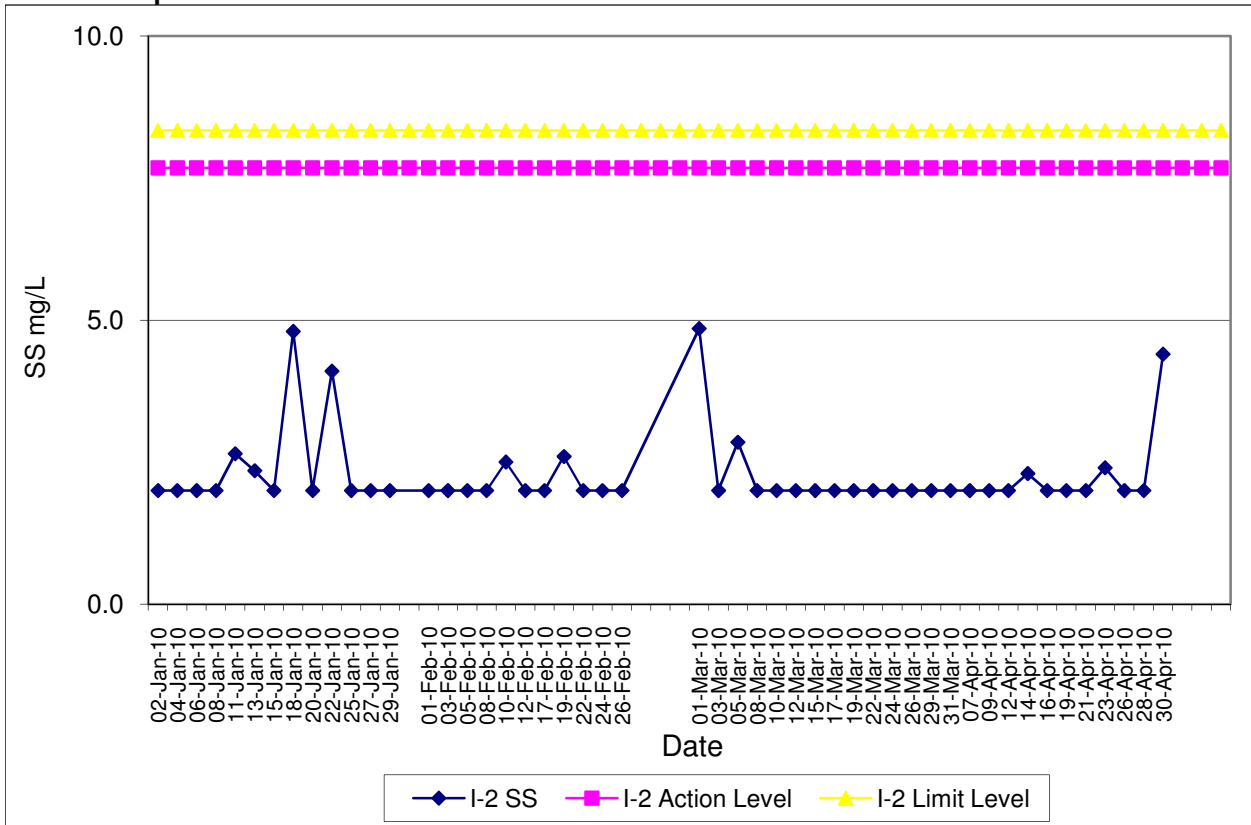
Contract No. DC/2007/12 - Design and Construction of Tsuen Wan Drainage Tunnel
Water Quality Results at Sik Sik Yuen Ho Fung College (I-1)
Jan-10 to Apr-10



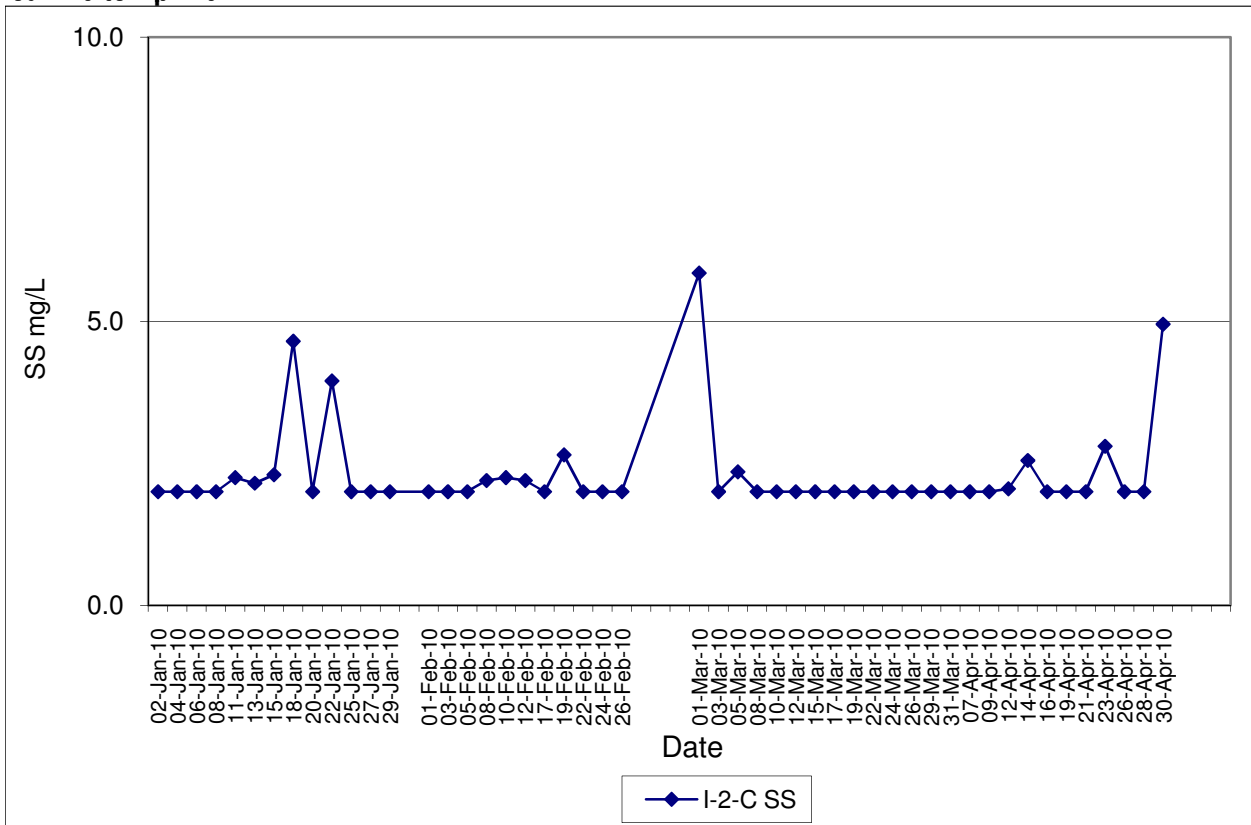
Contract No. DC/2007/12 - Design and Construction of Tsuen Wan Drainage Tunnel
Water Quality Results at Sik Sik Yuen Ho Fung College (I-1-C)
Jan-10 to Apr-10



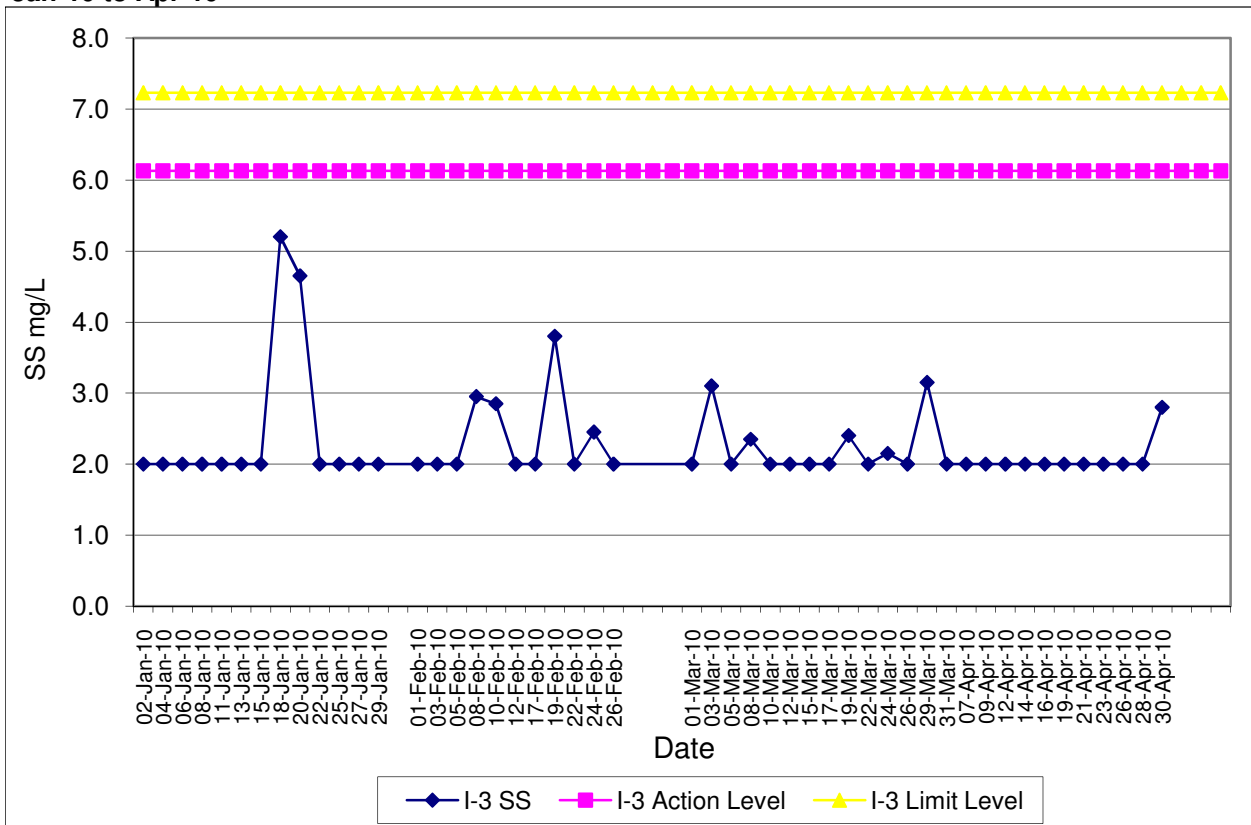
Contract No. DC/2007/12 - Design and Construction of Tsuen Wan Drainage Tunnel
Water Quality Results at Hong Hoi Chee Hong Temple (I-2)
Jan-10 to Apr-10



Contract No. DC/2007/12 - Design and Construction of Tsuen Wan Drainage Tunnel
Water Quality Results at Hong Hoi Chee Hong Temple (I-2-C)
Jan-10 to Apr-10



Contract No. DC/2007/12 - Design and Construction of Tsuen Wan Drainage Tunnel
Water Quality Results at Squatters (I-3)
Jan-10 to Apr-10



Contract No. DC/2007/12 - Design and Construction of Tsuen Wan Drainage Tunnel
Water Quality Results at Squatters (I-3-C)
Jan-10 to Apr-10

