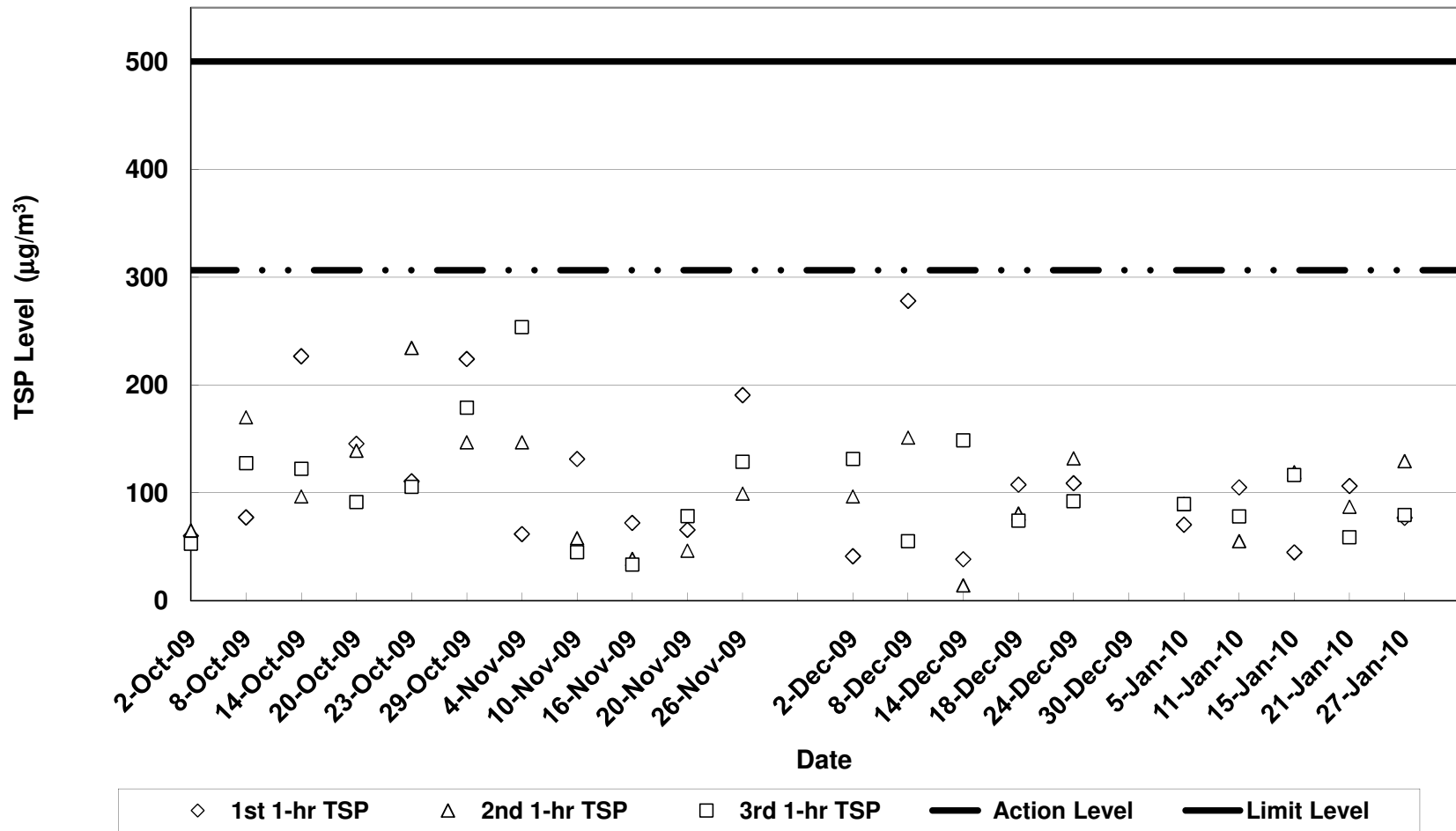


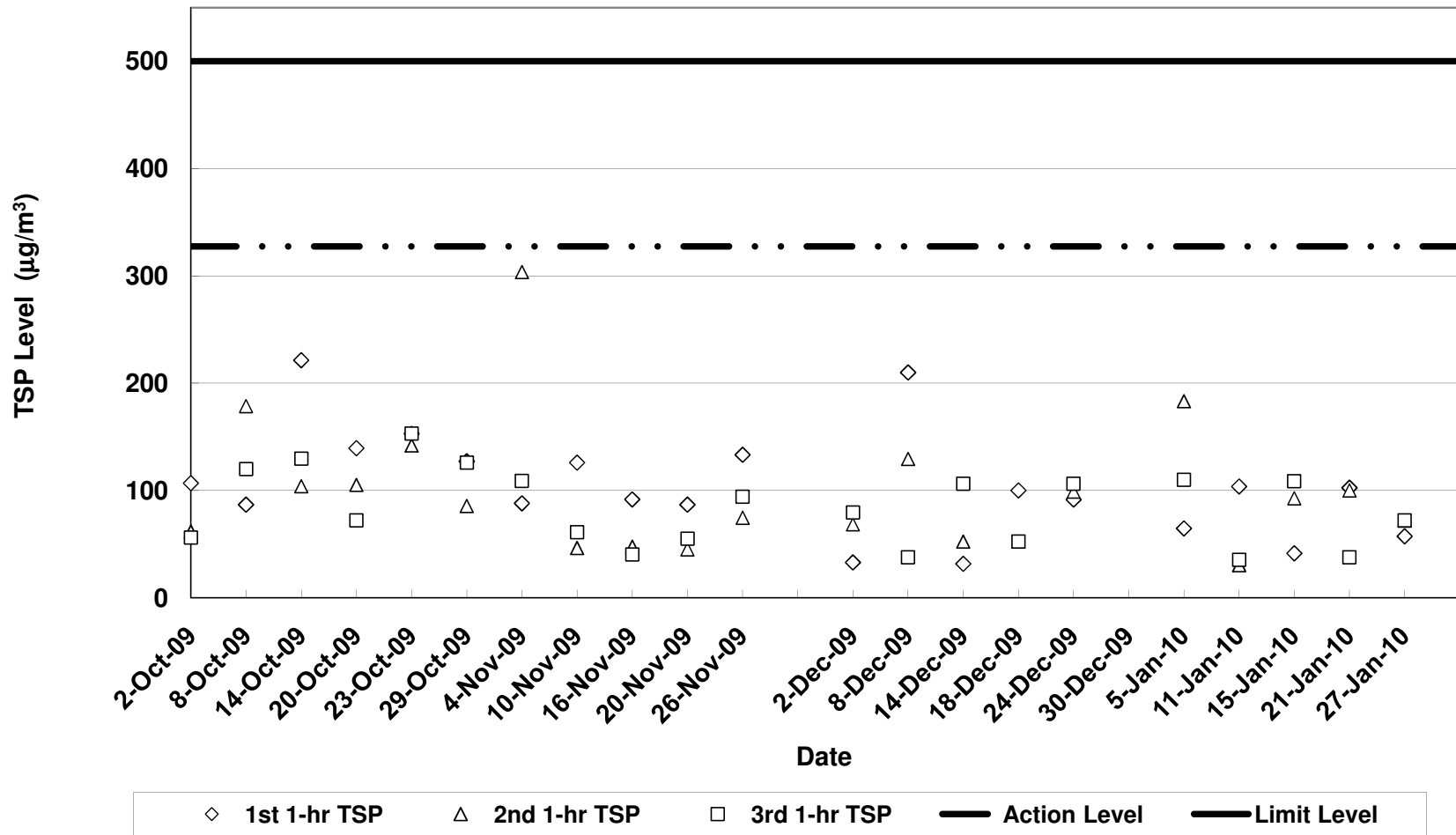
Air Quality Impact Monitoring Results (1-Hour TSP)

Location	Monitoring Date	Weather Conditions	Wind Speed with Direction (m/s)	Temp (°C)	Timer-I	Timer-F	Time (mins)	Flow-I (CFM)	Flow-F (CFM)	Flow-I (m³/min)	Flow-F (m³/min)	Flow-avg (m³/min)	Volume (m³)	Weight-I (g)	Weight-F (g)	Weight-diff. (g)	1-hr TSP (µg/m³)	Average 1-Hr TSP (µg/m³)	Action/Limit Levels (µg/m³)	Observation / Site Condition	Remark	
Sik Sik Yuen Ho Fung College - Intake (ASR1)	05-Jan-10	Cloudy	0.5E	16	586942	587042	60.0	40	40	1.30	1.30	1.30	78.06	2.8261	2.8316	0.0055	70.5	83.3	306.6/500	Breaking by backhoe,excavation work	Traffic	
		Cloudy	0.8E	16	587042	587142	60.0	40	40	1.30	1.30	1.30	78.06	2.8330	2.8400	0.0070	89.7					
		Cloudy	0.8E	16	587142	587242	60.0	40	40	1.30	1.30	1.30	78.06	2.7956	2.8026	0.0070	89.7					
	11-Jan-10	Cloudy	0.5N	14	587242	587342	60.0	40	40	1.30	1.30	1.30	78.06	2.7971	2.8053	0.0082	105.0	79.4	306.6/500	Breaking by backhoe,excavation work	Traffic	
		Cloudy	0.5N	14	587342	587442	60.0	40	40	1.30	1.30	1.30	78.06	2.8455	2.8498	0.0043	55.1					
		Cloudy	0.5N	14	587442	587542	60.0	40	40	1.30	1.30	1.30	78.06	2.7759	2.7811	0.0061	78.1					
	15-Jan-10	Sunny	0.2E	17	587542	587642	60.0	40	40	1.30	1.30	1.30	1.201	78.06	2.8410	2.8445	0.0035	44.8	93.5	306.6/500	Breaking by backhoe,excavation work	Traffic. Construction works were mainly carried out in Hours 2 and 3.
		Sunny	0.2E	17	587642	587742	60.0	40	40	1.30	1.30	1.30	78.06	2.8261	2.8354	0.0093	119.1					
		Sunny	0.2E	17	587742	587842	60.0	40	40	1.30	1.30	1.30	78.06	2.8571	2.8662	0.0091	116.6					
	21-Jan-10	Fine	0.3E	19	587842	587942	60.0	40	40	1.30	1.30	1.30	78.06	2.8373	2.8456	0.0083	106.3	84.1	306.6/500	Breaking by backhoe,excavation work	Traffic	
		Fine	0.3E	19	587942	588042	60.0	40	40	1.30	1.30	1.30	78.06	2.8201	2.8269	0.0068	87.1					
		Fine	0.3E	19	588042	588142	60.0	40	40	1.30	1.30	1.30	78.06	2.7989	2.8035	0.0046	58.8					
27-Jan-10	Fine	0.2E	19	588142	588242	60.0	40	40	1.30	1.30	1.30	78.06	2.7635	2.7695	0.0060	78.9	95.2	306.6/500	Breaking by backhoe, soil nailing	Traffic		
	Fine	0.2E	19	588242	588342	60.0	40	40	1.30	1.30	1.30	78.06	2.8124	2.8225	0.0101	129.4						
	Fine	0.2E	19	588342	588442	60.0	40	40	1.30	1.30	1.30	78.06	2.8062	2.8124	0.0062	79.4						
-	-	-	-	-	-	-	-	-	-	-	-	-	-	-	-	-	-	-	-	-	-	
Hong Hoi Chee Hong Temple - Intake (ASR3)	05-Jan-10	Cloudy	0.5E	16	556490	556590	60.0	40	40	1.36	1.36	1.36	81.88	2.7985	2.8038	0.0053	64.7	119.3	327.4/500	Excavation work, cutting	Traffic. Construction works were mainly carried out in Hours 2 and 3.	
		Cloudy	0.5E	16	556590	556690	60.0	40	40	1.36	1.36	1.36	81.88	2.7848	2.7998	0.0150	183.2					
		Cloudy	0.5E	16	556690	556790	60.0	40	40	1.36	1.36	1.36	81.88	2.8031	2.8121	0.0090	109.9					
	11-Jan-10	Cloudy	0.7N	14	556790	556890	60.0	40	40	1.36	1.36	1.36	81.88	2.8105	2.8190	0.0085	103.8	56.6	327.4/500	Excavation work, cutting	Traffic. Construction works were mainly carried out in Hour 1.	
		Cloudy	0.7N	14	556890	556990	60.0	40	40	1.36	1.36	1.36	81.88	2.8000	2.8025	0.0025	30.5					
		Cloudy	0.7N	14	556990	556990	60.0	40	40	1.36	1.36	1.36	81.88	2.7741	2.7770	0.0029	35.4					
	15-Jan-10	Sunny	0.2E	17	556990	556990	60.0	40	40	1.36	1.36	1.36	81.88	2.8090	2.8124	0.0034	41.5	81.0	327.4/500	Breaking by backhoe, cutting	Traffic. Construction works were mainly carried out in Hours 2 and 3.	
		Sunny	0.2E	17	556990	556990	60.0	40	40	1.36	1.36	1.36	81.88	2.7740	2.7816	0.0076	92.8					
		Sunny	0.2E	17	556990	556990	60.0	40	40	1.36	1.36	1.36	81.88	2.8094	2.8183	0.0089	108.7					
	21-Jan-10	Fine	0.3E	19	556990	556990	60.0	40	40	1.36	1.36	1.36	81.88	2.8065	2.8149	0.0084	102.6	80.2	327.4/500	Breaking by backhoe, cutting	Traffic. Construction works were mainly carried out in Hours 1 and 2.	
		Fine	0.3E	19	556990	556990	60.0	40	40	1.36	1.36	1.36	81.88	2.7883	2.7965	0.0082	100.1					
		Fine	0.3E	19	556990	556990	60.0	40	40	1.36	1.36	1.36	81.88	2.7935	2.7966	0.0031	37.9					
27-Jan-10	Fine	0.3E	19	556990	556990	60.0	40	40	1.36	1.36	1.36	81.88	2.8141	2.8188	0.0047	57.4	67.2	327.4/500	Excavation work hammering	Traffic		
	Fine	0.3E	19	556990	556990	60.0	40	40	1.36	1.36	1.36	81.88	2.7990	2.7999	0.0009	72.1						
	Fine	0.3E	19	556990	556990	60.0	40	40	1.36	1.36	1.36	81.88	2.7786	2.7845	0.0059	72.1						
-	-	-	-	-	-	-	-	-	-	-	-	-	-	-	-	-	-	-	-	-	-	
Long Beach Gardens - Outfall (ASR8)	05-Jan-10	Cloudy	1.2E	16	610480	610580	60.0	40	40	1.31	1.31	1.31	78.52	2.8328	2.8415	0.0087	110.8	104.0	336.6/500	Breaking by backhoe, excavation work	Traffic	
		Cloudy	1.2E	16	610580	610680	60.0	40	40	1.31	1.31	1.31	78.52	2.8048	2.8162	0.0114	145.2					
		Cloudy	1.2E	16	610680	610780	60.0	40	40	1.31	1.31	1.31	78.52	2.8148	2.8192	0.0044	56.0					
	11-Jan-10	Cloudy	0.9N	14	610780	610880	60.0	40	40	1.31	1.31	1.31	78.52	2.7945	2.8081	0.0136	173.2	75.1	336.6/500	Drilling work, excavation work	Traffic. Construction works were mainly carried out and heavy traffic was observed in Hour 1.	
		Cloudy	0.9N	14	610880	610980	60.0	40	40	1.31	1.31	1.31	78.52	2.7618	2.7644	0.0026	33.1					
		Cloudy	0.9N	14	610980	611080	60.0	40	40	1.31	1.31	1.31	78.52	2.7948	2.7963	0.0015	19.1					
	15-Jan-10	Sunny	0.5E	17	611080	611180	60.0	40	40	1.31	1.31	1.31	78.52	2.8096	2.8116	0.0020	25.5	81.1	336.6/500	Excavation work, breaking by backhoe	Traffic. Construction works were mainly carried out and heavy traffic was observed in Hours 2 and 3.	
		Sunny	0.5E	17	611180	611280	60.0	40	40	1.31	1.31	1.31	78.52	2.8251	2.8368	0.0117	98.1					
		Sunny	0.5E	17	611280	611380	60.0	40	40	1.31	1.31	1.31	78.52	2.8424	2.8518	0.0094	119.7					
	21-Jan-10	Fine	0.3E	19	611380	611480	60.0	40	40	1.31	1.31	1.31	78.52	2.8391	2.8509	0.0118	150.3	87.0	336.6/500	Excavation work, breaking by backhoe	Traffic. Construction works were mainly carried out in Hour 1.	
		Fine	0.3E	19	611480	611580	60.0	40	40	1.31	1.31	1.31	78.52	2.7888	2.7941	0.0053	67.5					
		Fine	0.3E	19	611580	611680	60.0	40	40	1.31	1.31	1.31	78.52	2.8052	2.8086	0.0034	43.3					
27-Jan-10	Fine	0.5E	19	611680	611780	60.0	40	40	1.31	1.31	1.31	78.52	2.8491	2.8559	0.0068	86.6	110.4	336.6/500	Excavation work, breaking by backhoe	Traffic		
	Fine	0.5E	19	611780	611880	60.0	40	40	1.31	1.31	1.31	78.52	2.7914	2.8007	0.0093	118.4						
	Fine	0.5E	19	611880	611980	60.0	40	40	1.31	1.31	1.31	78.52	2.8058	2.8157	0.0099	126.1						
-	-	-	-	-	-	-	-	-	-	-	-	-	-	-	-	-	-	-	-	-	-	
Greenview Terrace - Outfall (ASR9)	05-Jan-10	Cloudy	1.5E	16	542380	542480	60.0	40	40	1.24	1.24	1.24	74.27	2.8120	2.8188	0.0068	91.6	106.8	329.2/500	Breaking by backhoe, excavation work	Traffic	
		Cloudy	1.5E	16	542480	542580	60.0	40	40	1.24	1.24	1.24	74.27	2.7938	2.8021	0.0083	111.8					
		Cloudy	1.5E	16	542580	542680	60.0	40	40	1.24	1.24	1.24	74.27	2.8044	2.8131	0.0087	117.1					
	11-Jan-10	Cloudy	1.0N	14	542680	542780	60.0	40	40	1.24	1.24	1.24	74.27	2.8241	2.8349	0.0108	145.4	60.1	329.2/500	Drilling work,Excavation work	Traffic	
		Cloudy	1.0N	14	542780	542880	60.0	40	40	1.24	1.24	1.24	74.27	2.7745	2.7755	0.0010	13.5					
		Cloudy	1.0N	14	542880	542980	60.0	40	40	1.24	1.24	1.24	74.27	2.7810	2.7826	0.0016	21.5					
	15-Jan-10	Sunny	0.5E	17	542980	543080	60.0	40	40	1.24	1.24	1.24	74.27	2.7681	2.7731	0.0050	67.3	87.5	329.2/500	Excavation work, soil nailing	Traffic	
		Sunny	0.5E	17	543080	543180	60.0	40	40	1.24	1.24	1.24	74.27	2.8041	2.8099	0.0058	78.1					
		Sunny	0.5E	17	543180	543280	60.0	40	40	1.24	1.24	1.24	74.27	2.7931	2.8018	0.0087	117.1					
	21-Jan-10	Fine	0.3E	19	543280	543380	60.0	40	40	1.24	1.24	1.24	74.27	2.8282	2.8358	0.0076	129.3	74.5	329.2/500	Excavation work, soil nailing	Traffic. Construction works were mainly carried out in Hour 1.	
		Fine	0.3E	19	543380	543480	60.0	40	40	1.24	1.24	1.24	74.27	2.7712	2.7751	0.0039	52.5					
		Fine	0.3E	19	543480	543580	60.0	40	40	1.24	1.24	1.24	74.27	2.8070	2.8101	0.0031	41.7					
27-Jan-10	Fine	0.5E	19	543580	543680	60.0	40	40	1.24	1.24	1.24	74.27	2.8241	2.8307	0.0066	88.9	77.2	329.2/500	Breaking by backhoe,excavation work	Traffic		
	Fine	0.5E	19	54368																		

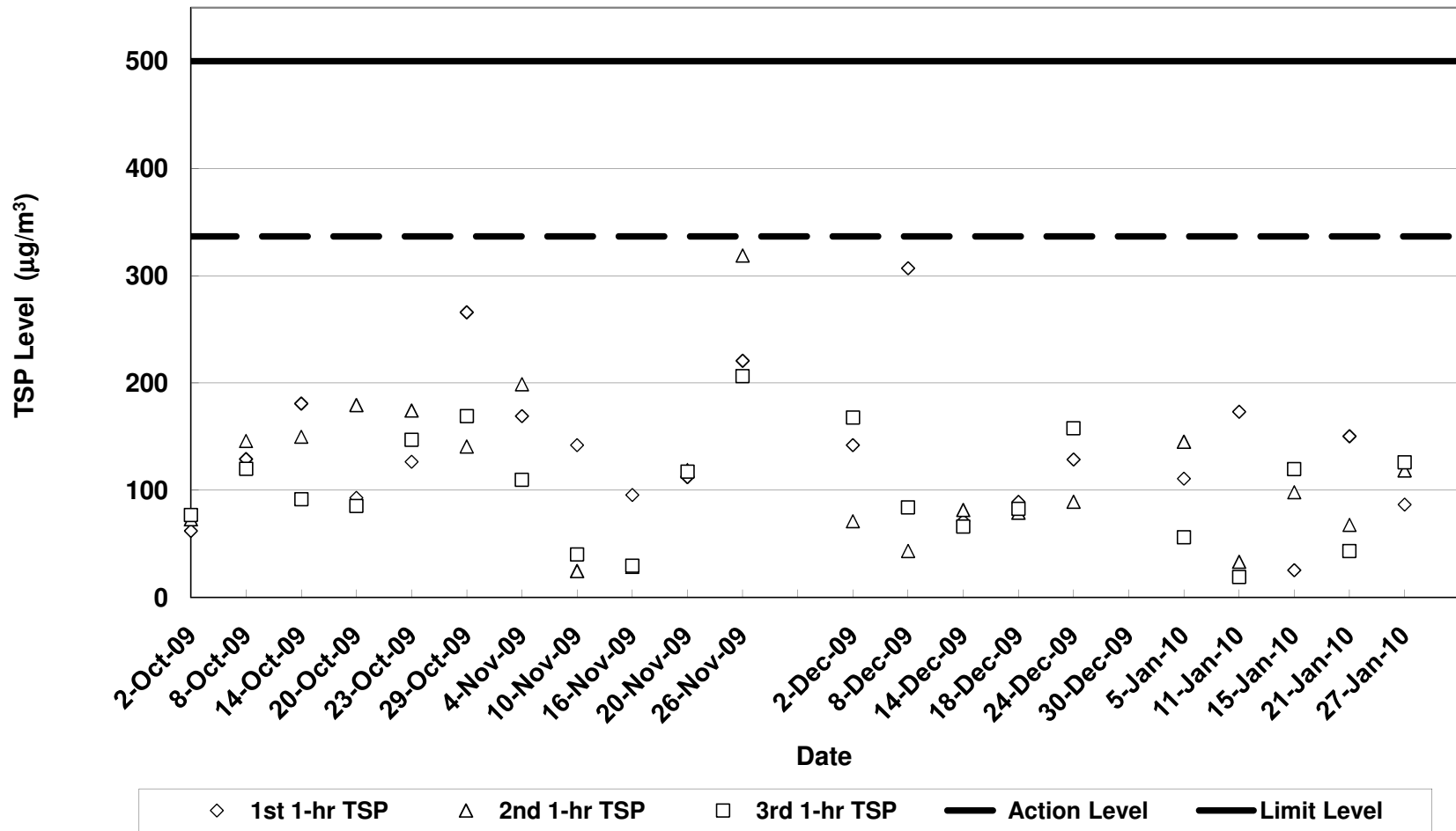
**Contract No. DC/2007/12 - Design and Construction of Tsuen Wan Drainage Tunnel
 Air Quality Monitoring (1-hr TSP) Results at Sik Sik Yuen Ho Fung College - Intake (ASR1)
 Oct-09 to Jan-10**



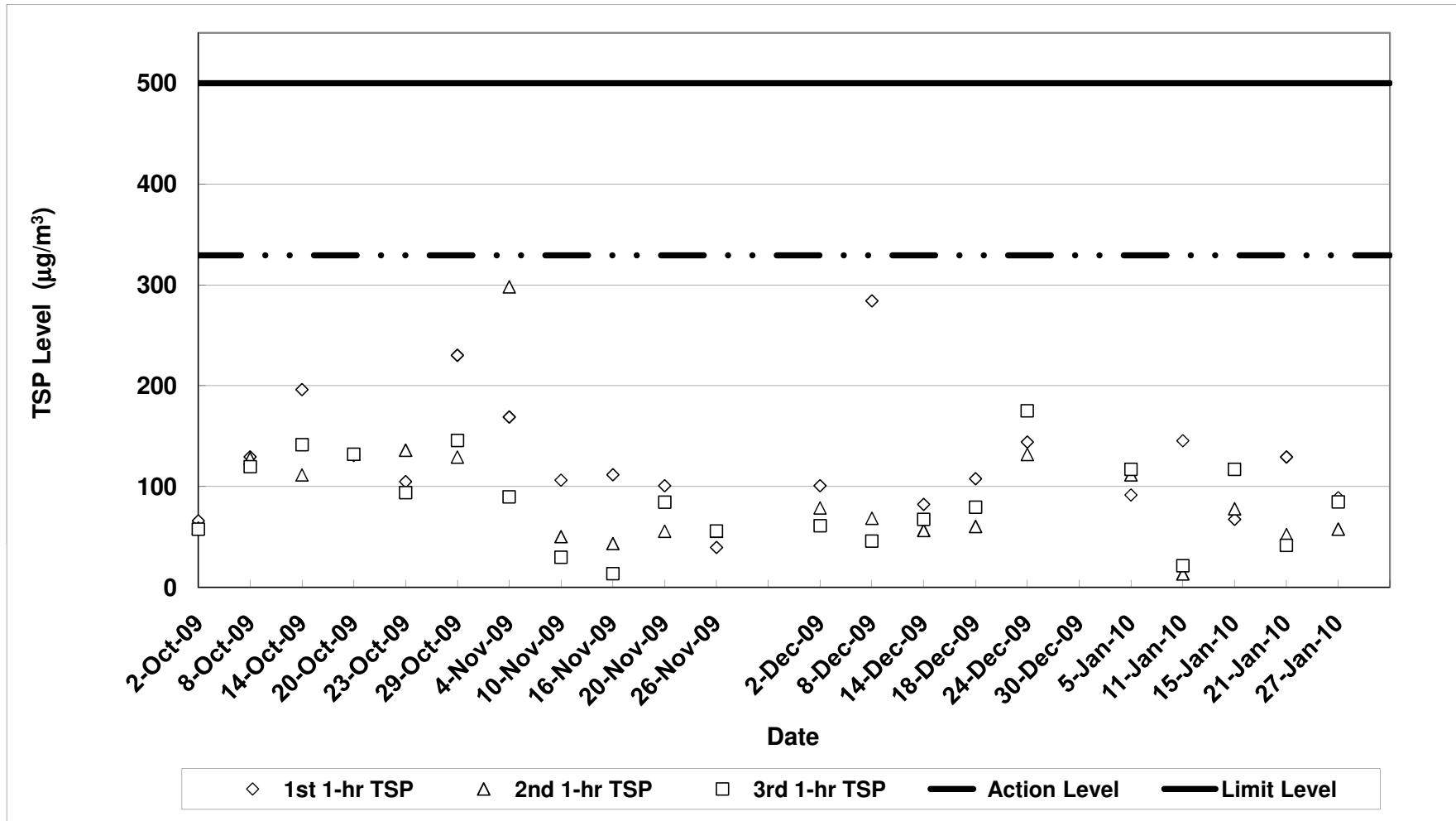
**Contract No. DC/2007/12 - Design and Construction of Tsuen Wan Drainage Tunnel
 Air Quality Monitoring (1-hr TSP) Results at Hong Hoi Chee Hong Temple - Intake (ASR3)
 Oct-09 to Jan-10**



**Contract No. DC/2007/12 - Design and Construction of Tsuen Wan Drainage Tunnel
Air Quality Monitoring (1-hr TSP) Results at Long Beach Gardens - Outfall (ASR8)
Oct-09 to Jan-10**



**Contract No. DC/2007/12 - Design and Construction of Tsuen Wan Drainage Tunnel
Air Quality Monitoring (1-hr TSP) Results at Greenview Terrance - Outfall (ASR9)
Oct-09 to Jan-10**



Contract No. DC/2007/12 - Design and Construction of Tsuen Wan Drainage Tunnel

Noise Impact Monitoring Results

Monitoring Locations	Date	Weather Conditions	Temperature (°C)	Wind Speed (m/s)	Wind Direction	Start Time	End Time	BL ¹ dB(A)	LL ² dB(A)	L _{eq} (30min) dB(A)	L ₁₀ (30min) dB(A)	L ₉₀ (30min) dB(A)	CNL ³ dB(A)	Observation / Site Condition	Remark
Sik Sik Yuen Ho Fung College NSR 1	05-Jan-10	Cloudy	16	0.8	E	14:20	14:50	66.1	65	64.8	67.1	60.5	-	Excavation work	Traffic noise
	12-Jan-10	Sunny	17	0.8	N	13:50	14:20		65	64.2	66.9	59.3	-	Excavation work	Traffic noise
	21-Jan-10	Fine	19	0.3	E	14:56	15:26		70	68.3	71.2	62.2	-	Excavation work, breaking by backhoe	Traffic noise
	27-Jan-10	Fine	19	0.2	E	16:40	17:10		70	63.7	66.5	59.7	-	Excavation work	Traffic noise
	-	-	-	-	-	-	-		-	-	-	-	-	-	-
Hong Hoi Chee Hong Temple NSR 3	05-Jan-10	Cloudy	16	0.5	E	15:03	15:33	57.9	75	64.7	66.9	59.8	-	Excavation work, cutting	Traffic noise
	12-Jan-10	Sunny	17	0.5	N	14:30	15:00		75	63.1	64.1	61.7	-	Air compressor	Traffic noise
	21-Jan-10	Fine	19	0.3	E	14:15	14:45		75	68.0	70.8	64.7	-	Excavation work	Traffic noise
	27-Jan-10	Fine	19	0.3	E	16:00	16:30		75	69.3	71.2	66.5	-	Breaking by backhoe	Traffic noise
	-	-	-	-	-	-	-		-	-	-	-	-	-	-
Squatters NSR 6	05-Jan-10	Cloudy	16	0.3	E	10:05	10:35	61.2	75	54.4	57.0	47.5	-	Excavation work	Nil
	12-Jan-10	Sunny	17	0.5	N	15:33	16:03		75	69.7	73.0	62.1	-	Excavation work , Soil Nailing	Nil
	21-Jan-10	Fine	19	0.3	E	13:28	13:58		75	73.4	75.7	69.2	-	Breaking by backhoe	Nil
	26-Jan-10*	Fine	19	0.4	E	11:10	11:40		75	67.3	68.3	64.6	-	Soil nailing	Nil
	27-Jan-10	Fine	19	0.3	E	13:30	14:00		75	70.1	71.8	66.7	-	Soil nailing and cutting	Aircraft noise
Long Beach Gardens NSR 8	05-Jan-10	Cloudy	16	1.2	E	11:05	11:35	60.9	75	64.7	66.8	61.2	-	Breaking by backhoe, excavation work	Traffic noise
	12-Jan-10	Sunny	17	1.1	N	10:30	11:00		75	62.5	65.0	59.5	-	Excavation work	Traffic noise
	21-Jan-10	Fine	19	0.5	E	10:05	10:35		75	62.6	64.7	59.7	-	Excavation work	Traffic noise
	27-Jan-10	Fine	19	0.5	E	15:15	15:45		75	65.3	67.5	61.5	-	Breaking by backhoe, excavation work	Traffic noise
	-	-	-	-	-	-	-		-	-	-	-	-	-	-
Greenview Terrace NSR 9	05-Jan-10	Cloudy	16	1.5	E	13:30	14:00	59.7	75	69.8	73.0	64.2	-	Breaking by backhoe,excavation work	Traffic noise
	08-Jan-10*	Fine	19	1.3	E	13:05	13:35		75	70.4	73.7	63.8	-	Breaking by backhoe, excavation work	Traffic noise
	12-Jan-10	Sunny	17	1.2	N	11:15	11:45		75	74.5	77.9	68.5	-	Breaking by backhoe,excavation work	Traffic noise
	15-Jan-10*	Sunny	19	0.5	E	11:30	12:00		75	72.5	75.7	65.9	-	Breaking by backhoe, excavation work	Traffic noise, aircraft noise
	19-Jan-10*	Sunny	19	0.6	E	13:50	14:20		75	64.0	65.7	61.8	-	Breaking by backhoe, excavation work	Traffic noise, aircraft noise
	21-Jan-10	Fine	19	0.5	E	11:10	11:40		75	68.9	72.5	62.4	-	Breaking by backhoe,excavation work	Traffic noise
	26-Jan-10*	Fine	19	0.5	E	12:58	13:28		75	73.0	76.3	64.6	-	Breaking by backhoe,excavation work	Traffic noise
	27-Jan-10	Fine	19	0.5	E	14:35	15:05		75	69.4	71.6	65.9	-	Breaking by backhoe, cutting	Traffic noise
	-	-	-	-	-	-	-		-	-	-	-	-	-	-

1: Baseline Noise Level

2: Limit Level

3: Corrected Noise Level

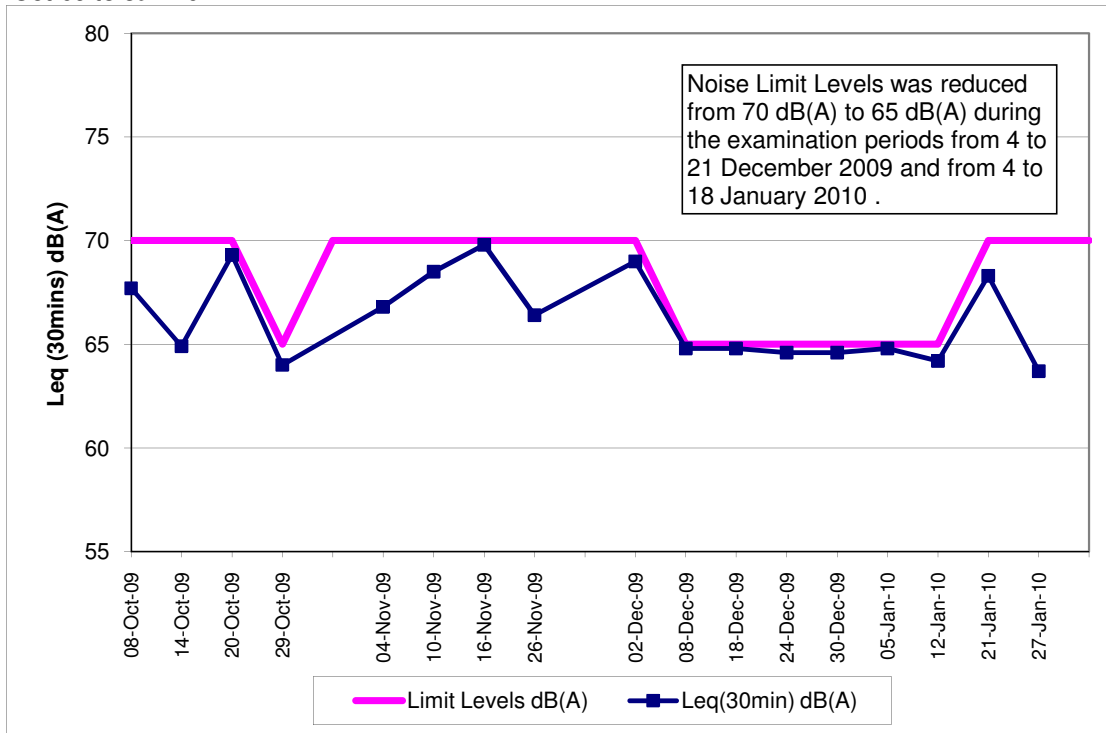
Note:

The limit level of NSR1 is 65dB(A) during school examination period.

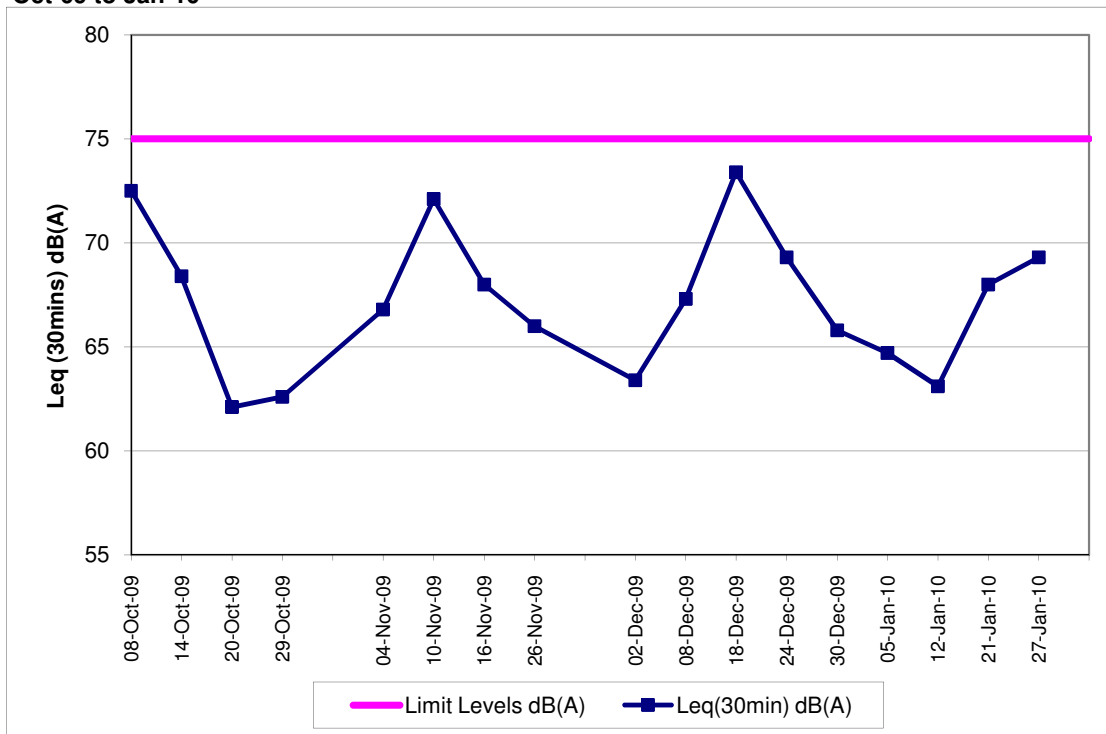
Red Bold indicates an exceedance of Limit Level

* Additional Noise Monitoring

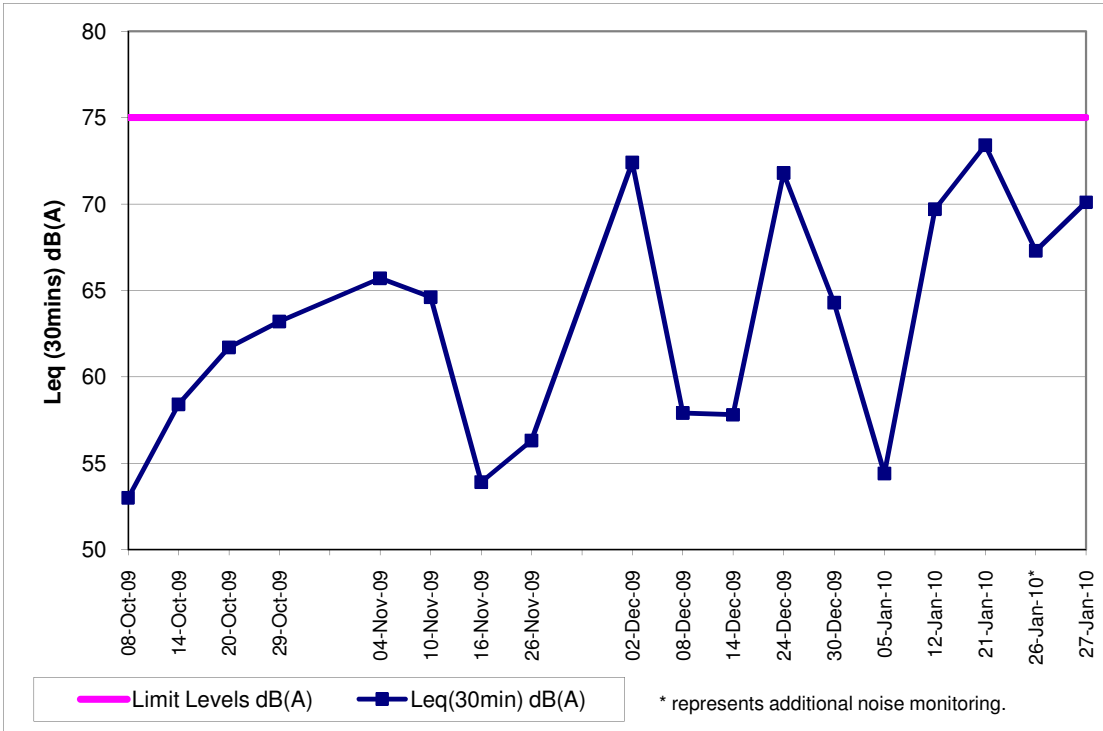
**Contract No. DC/2007/12 - Design and Construction of Tsuen Wan Drainage Tunnel
Noise Monitoring Results at Sik Sik Yuen Ho Fung College (NSR 1)
Oct-09 to Jan-10**



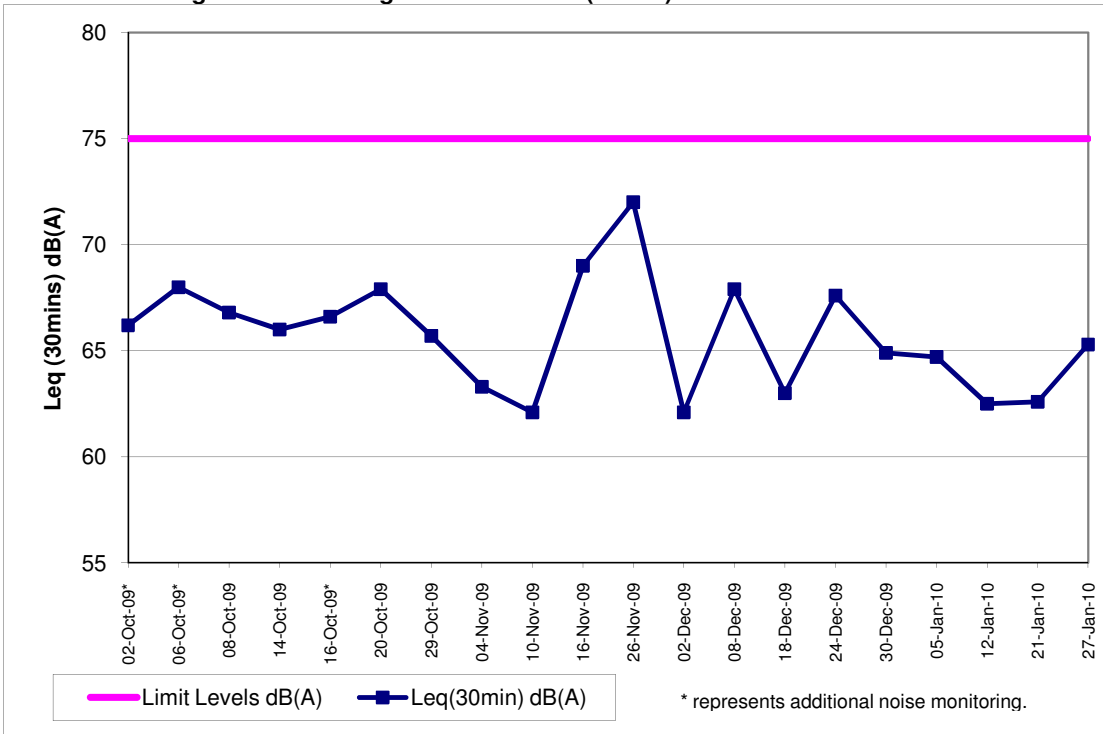
**Contract No. DC/2007/12 - Design and Construction of Tsuen Wan Drainage Tunnel
Noise Monitoring Results at Hong Hoi Chee Hong Temple (NSR 3)
Oct-09 to Jan-10**



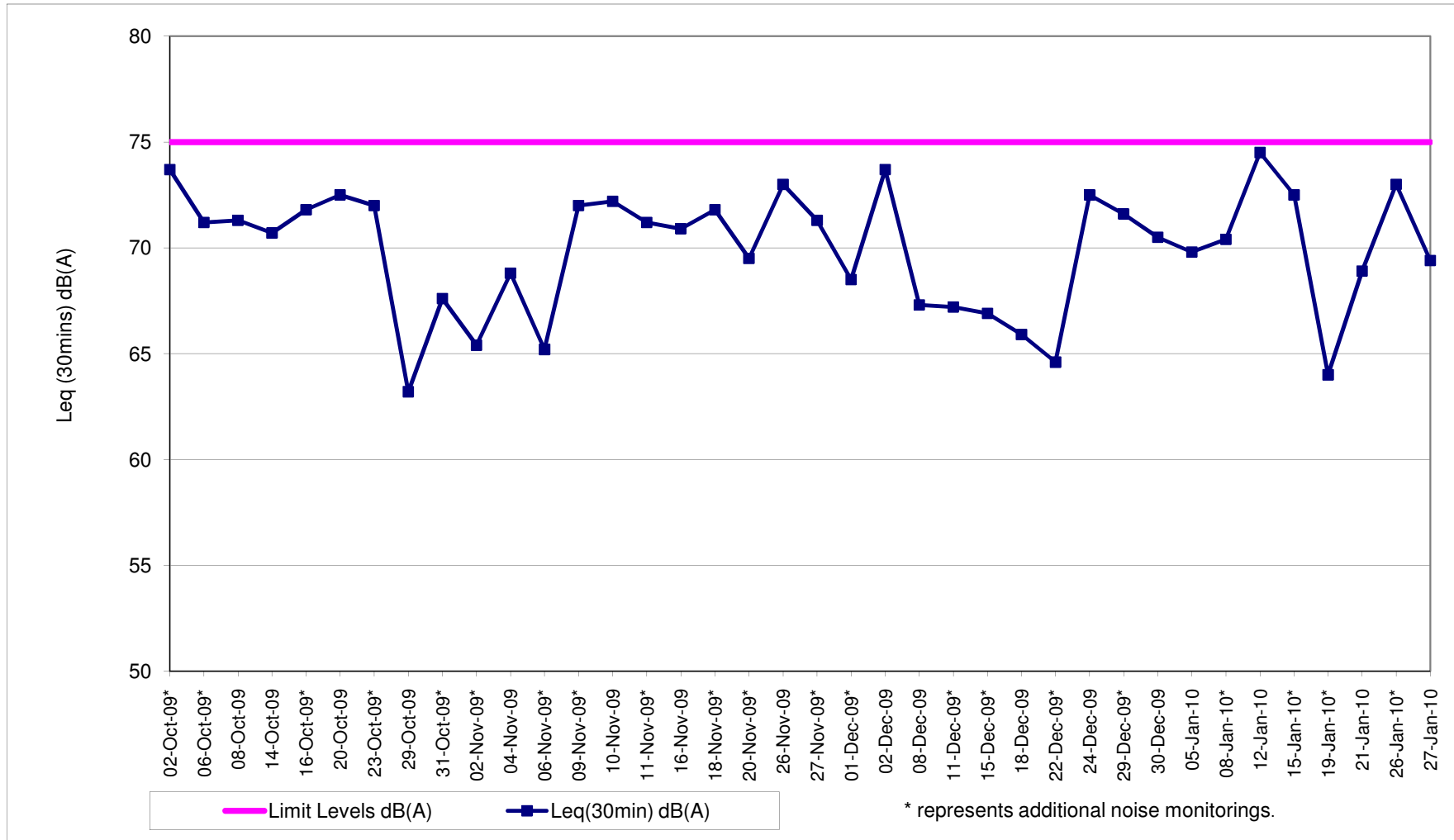
**Contract No. DC/2007/12 - Design and Construction of Tsuen Wan Drainage Tunnel
Noise Monitoring Results at Squatters (NSR 6)
Oct-09 to Jan-10**



**Contract No. DC/2007/12 - Design and Construction of Tsuen Wan Drainage Tunnel
Noise Monitoring Results at Long Beach Gardens (NSR 8)**



Contract No. DC/2007/12 - Design and Construction of Tsuen Wan Drainage Tunnel
Noise Monitoring Results at NSR9 (Greenview Terrace)
Oct-09 to Jan-10

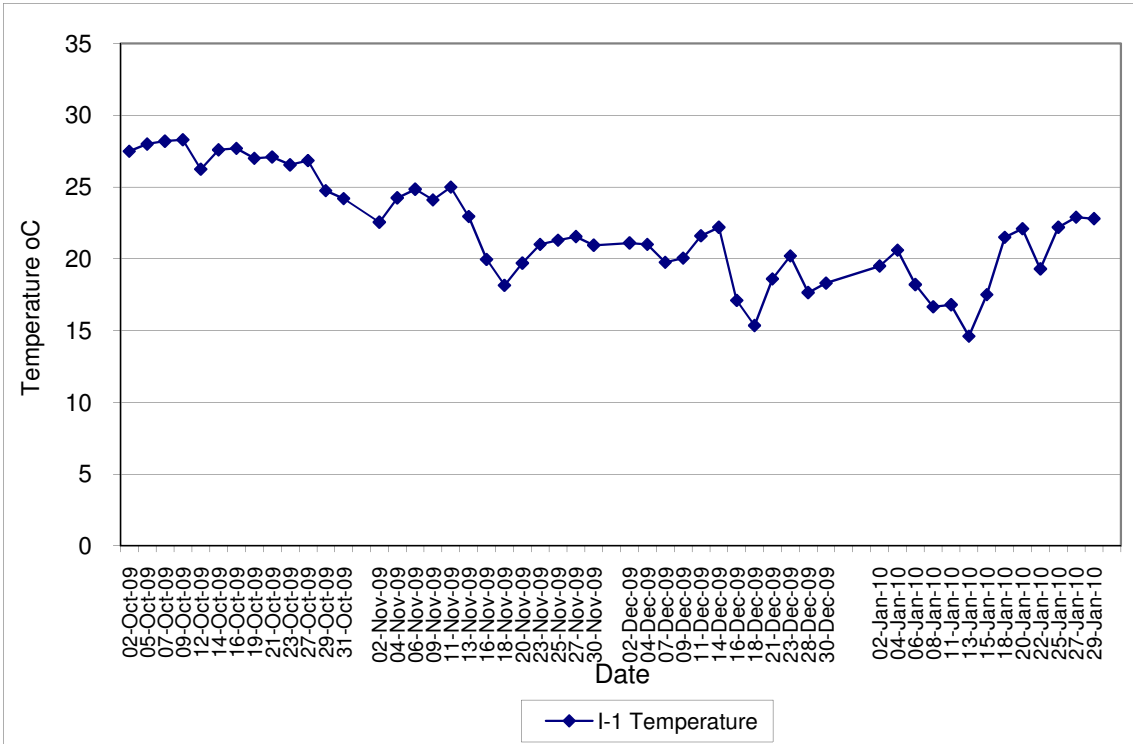


Contract No. DC/2007/12 - Design and Construction of Tsuen Wan Drainage Tunnel

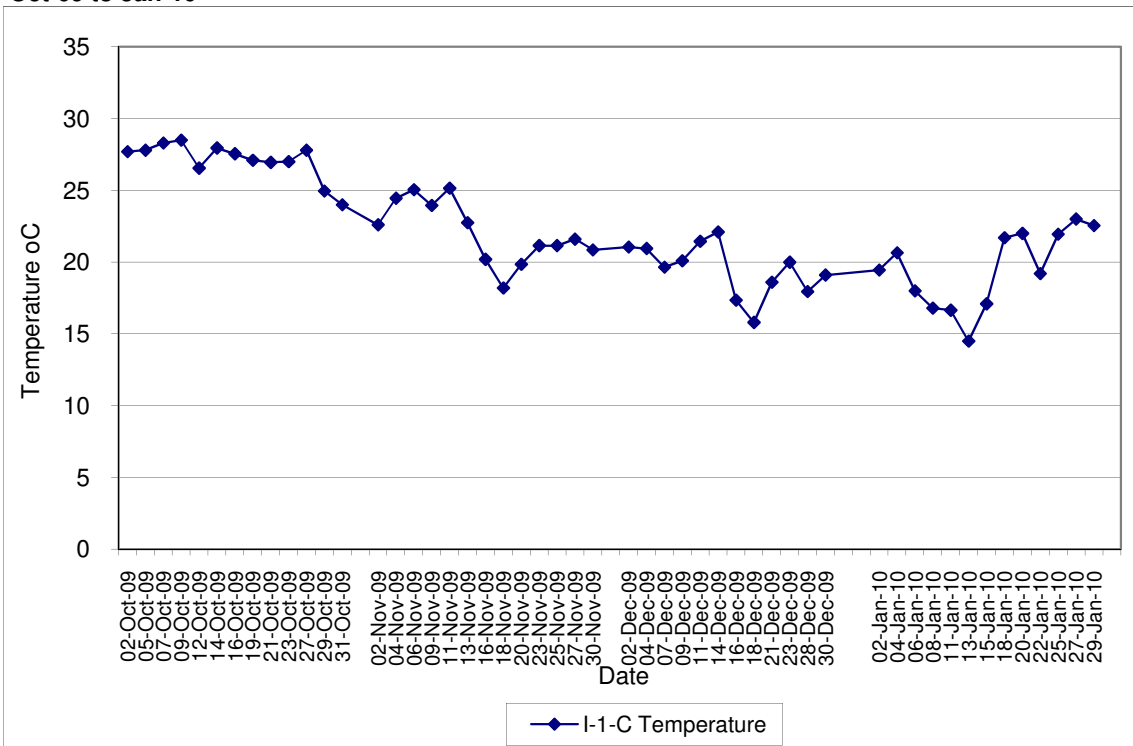
Water Quality Impact Monitoring Results

Monitoring Locations	Date	Start Time	Weather	Water Depth(m)	Temp			DO(m/L)			Action/Limit Level of DO(mg/L)	pH			Turbidity(NTU)			Action/Limit Level of Tby	SS (mg/L)			Action/Limit Level of SS(mg/L)	Remarks:	Action to be taken
					1	2	Avg	1	2	Avg		1	2	Avg	1	2	Avg		1	2	Avg			
Sik Sui Yuen Ho Fung College	02-Jan-10	10:35	Fine	<1	19.50	19.50	19.50	6.16	6.21	6.19	3.42 / 3.94	7.46	7.46	7.46	4.30	4.18	4.24	2.8	2.1	2.5	8.85 / 10.17	Breaking by backhoe excavation work	Nil	
	04-Jan-10	10:50	Sunny	<1	20.60	20.60	20.60	6.11	6.03	6.07	7.41	7.41	7.41	3.05	3.11	3.08	2.1	2.0	2.1	Breaking by backhoe excavation work	Nil			
	06-Jan-10	10:30	Cloudy	<1	18.20	18.20	18.20	5.86	5.90	5.88	7.42	7.43	7.43	19.50	19.44	19.47	14.6	12.6	13.6	The exceedance is considered to be contributed by the high turbidity and SS levels of control station (H1-C) due to other construction activities and no action should be taken.	Breaking by backhoe excavation work	Nil		
	08-Jan-10	10:37	Fine	<1	16.70	16.60	16.65	6.50	6.54	6.52	7.20	7.20	7.20	7.12	7.06	7.09	3.5	3.4	3.5	Breaking by backhoe excavation work	Nil			
	11-Jan-10	11:27	Cloudy	<1	16.80	16.80	16.80	6.52	6.47	6.50	7.25	7.25	7.25	7.20	7.79	7.75	3.6	3.9	3.8	Breaking by backhoe excavation work	Nil			
	13-Jan-10	10:13	Sunny	<1	14.60	14.60	14.60	6.94	6.90	6.92	7.40	7.40	7.40	7.07	7.21	7.14	4.0	4.2	4.1	Breaking by backhoe excavation work	Nil			
	15-Jan-10	11:25	Cloudy	<1	17.60	17.50	17.55	7.46	7.48	7.47	7.40	7.40	7.40	8.12	8.23	8.24	5.4	5.6	5.5	Breaking by backhoe excavation work	Nil			
	18-Jan-10	10:33	Sunny	<1	21.50	21.50	21.50	6.13	6.07	6.10	7.45	7.45	7.45	8.12	8.23	8.18	2.0	2.0	2.0	Breaking by backhoe excavation work	Nil			
	20-Jan-10	10:48	Fine	<1	22.10	22.10	22.10	6.07	6.17	6.12	7.44	7.44	7.44	7.53	7.66	7.60	6.0	6.0	6.0	Breaking by backhoe excavation work	Nil			
	22-Jan-10	10:29	Cloudy	<1	19.30	19.30	19.30	5.72	5.78	5.75	7.56	7.56	7.56	5.06	5.12	5.09	6.3	5.5	5.9	The exceedance is considered to be contributed by natural variation and no action should be required.	Breaking by backhoe excavation work	Nil		
	25-Jan-10	10:45	Fine	<1	22.20	22.20	22.20	7.08	7.00	7.04	7.35	7.36	7.36	3.25	3.31	3.28	6.4	5.3	5.9	Breaking by backhoe excavation work	Nil			
	27-Jan-10	10:00	Fine	<1	22.90	22.90	22.90	5.70	5.74	5.72	7.51	7.51	7.51	7.02	7.08	7.05	10.4	9.9	10.15	The exceedance is considered to be contributed by natural variation and no action should be required.	Breaking by backhoe excavation work	Nil		
	29-Jan-10	10:55	Fine	<1	22.80	22.80	22.80	6.11	6.07	6.09	7.15	7.15	7.15	4.12	4.22	4.17	4.7	4.3	4.5	Breaking by backhoe excavation work	Nil			
	02-Jan-10	10:23	Fine	<1	19.40	19.50	19.45	6.09	6.04	6.07	7.45	7.46	7.46	4.55	4.62	4.59	2.3	2.4	2.4	Nil	Nil			
	04-Jan-10	10:40	Fine	<1	20.70	20.60	20.65	6.15	6.09	6.16	7.40	7.41	7.43	3.17	3.25	3.21	2.0	2.0	2.0	Other construction activities at control station.	Nil			
	06-Jan-10	10:20	Cloudy	<1	18.00	18.00	18.00	6.12	6.07	6.10	7.43	7.42	7.43	19.70	19.63	19.67	15.0	17.5	16.3	Other construction activities at control station.	Nil			
	08-Jan-10	10:27	Fine	<1	16.80	16.80	16.80	6.40	6.47	6.44	7.19	7.20	7.20	8.01	7.96	7.99	4.6	3.4	4.0	Other construction activities at control station.	Nil			
	11-Jan-10	10:15	Cloudy	<1	16.70	16.60	16.65	6.54	6.48	6.51	7.25	7.25	7.25	7.87	7.94	7.96	4.4	4.1	4.3	Other construction activities at control station.	Nil			
	13-Jan-10	10:02	Sunny	<1	14.50	14.50	14.50	6.86	7.00	6.98	7.41	7.41	7.41	7.16	7.25	7.22	3.9	3.8	3.9	Other construction activities at control station.	Nil			
15-Jan-10	11:20	Sunny	<1	17.10	17.10	17.10	7.36	7.40	7.38	7.41	7.40	7.41	8.70	8.65	8.68	6.0	5.4	5.7	Other construction activities at control station.	Nil				
18-Jan-10	10:21	Sunny	<1	21.70	21.70	21.70	6.18	6.14	6.16	7.48	7.48	7.48	8.40	8.51	8.46	2.0	2.0	2.0	Other construction activities at control station.	Nil				
20-Jan-10	11:00	Cloudy	<1	22.00	22.00	22.00	5.88	5.84	5.91	7.44	7.44	7.44	8.40	8.51	8.46	5.6	6.8	6.2	Other construction activities at control station.	Nil				
22-Jan-10	10:18	Cloudy	<1	19.20	19.20	19.20	5.88	5.79	5.84	7.55	7.55	7.55	5.46	5.40	5.43	4.9	4.6	4.8	Other construction activities at control station.	Nil				
25-Jan-10	10:33	Fine	<1	22.00	21.90	21.95	7.16	7.20	7.18	7.38	7.39	7.39	3.40	3.50	3.45	5.5	5.4	5.5	Other construction activities at control station.	Nil				
27-Jan-10	09:50	Fine	<1	23.00	23.00	23.00	5.98	6.05	6.02	7.52	7.52	7.52	7.14	7.17	7.16	9.0	10.0	9.5	Other construction activities at control station.	Nil				
29-Jan-10	10:41	Fine	<1	22.50	22.60	22.55	6.27	6.32	6.30	7.15	7.16	7.16	4.21	4.33	4.27	4.5	4.2	4.4	Other construction activities at control station.	Nil				
02-Jan-10	10:00	Fine	<1	19.60	19.60	19.60	6.33	6.28	6.31	7.42	7.42	7.42	3.90	3.97	3.94	2.0	2.0	2.0	Excavation by backhoe	Nil				
04-Jan-10	09:12	Sunny	<1	20.90	20.90	20.90	6.11	6.07	6.09	7.59	7.60	7.60	2.03	2.01	2.02	2.0	2.0	2.0	Excavation by backhoe	Nil				
06-Jan-10	09:50	Cloudy	<1	18.30	18.20	18.25	5.93	5.98	5.96	7.42	7.42	7.42	2.10	2.05	2.08	2.0	2.0	2.0	Excavation by backhoe	Nil				
08-Jan-10	09:58	Fine	<1	16.20	16.20	16.20	6.23	6.28	6.26	7.83	7.82	7.83	4.40	4.33	4.37	2.0	2.0	2.0	Excavation by backhoe	Nil				
11-Jan-10	10:52	Cloudy	<1	16.70	16.70	16.70	6.03	6.10	6.07	7.23	7.24	7.24	4.60	4.50	4.55	2.2	3.1	2.7	Excavation by backhoe	Nil				
13-Jan-10	09:40	Cloudy	<1	14.80	14.70	14.75	6.65	6.60	6.63	7.36	7.36	7.36	3.11	3.16	3.15	2.2	2.5	2.4	Excavation by backhoe	Nil				
15-Jan-10	10:55	Sunny	<1	18.20	18.10	18.15	7.49	7.44	7.47	7.50	7.51	7.51	3.43	3.51	3.47	2.0	2.0	2.0	Excavation by backhoe	Nil				
18-Jan-10	09:55	Sunny	<1	21.30	21.30	21.30	5.95	5.99	5.97	7.41	7.40	7.41	6.00	6.10	6.05	4.9	4.7	4.8	Excavation by backhoe	Nil				
20-Jan-10	10:10	Fine	<1	21.80	21.80	21.80	5.55	5.64	5.60	7.36	7.36	7.36	6.02	6.08	6.05	2.0	2.0	2.0	Excavation by backhoe	Nil				
22-Jan-10	09:48	Cloudy	<1	18.80	18.80	18.80	5.93	5.98	5.96	7.47	7.48	7.48	5.18	5.12	5.16	4.7	3.5	4.1	Excavation by backhoe	Nil				
25-Jan-10	09:48	Fine	<1	22.60	22.60	22.60	6.90	6.94	6.92	7.45	7.45	7.45	3.18	3.22	3.20	2.0	2.0	2.0	Excavation by backhoe	Nil				
27-Jan-10	10:35	Fine	<1	22.40	22.40	22.40	5.62	5.70	5.66	7.50	7.50	7.50	2.73	2.65	2.69	2.0	2.0	2.0	Excavation by backhoe	Nil				
29-Jan-10	10:10	Fine	<1	22.60	22.60	22.60	5.96	5.91	5.94	7.25	7.26	7.26	1.50	1.55	1.53	2.0	2.0	2.0	Excavation by backhoe	Nil				
02-Jan-10	09:48	Fine	<1	19.80	19.80	19.80	6.38	6.42	6.40	7.42	7.42	7.42	4.15	4.22	4.19	2.0	2.0	2.0	Excavation by backhoe	Nil				
04-Jan-10	09:55	Sunny	<1	20.80	20.80	20.80	6.39	6.47	6.43	7.61	7.60	7.61	2.12	2.15	2.14	2.0	2.0	2.0	Excavation by backhoe	Nil				
06-Jan-10	09:38	Cloudy	<1	18.20	18.20	18.20	5.85	5.92	5.89	7.40	7.40	7.40	2.08	2.13	2.11	2.0	2.0	2.0	Excavation by backhoe	Nil				
08-Jan-10	09:45	Fine	<1	16.50	16.40	16.45	6.30	6.35	6.33	7.85	7.85	7.85	4.50	4.62	4.56	2.0	2.0	2.0	Excavation by backhoe	Nil				
11-Jan-10	10:40	Cloudy	<1	16.50	16.50	16.50	6.15	6.11	6.13	7.23	7.23	7.23	4.74	4.86	4.80	2.1	2.4	2.3	Excavation by backhoe	Nil				
13-Jan-10	09:30	Sunny	<1	14.70	14.60	14.65	7.13	7.19	7.16	7.36	7.37	7.38	3.39	3.42	3.41	2.0	2.3	2.2	Excavation by backhoe	Nil				
15-Jan-10	10:43	Sunny	<1	18.10	18.00	18.05	7.51	7.54	7.53	7.38	7.38	7.38	3.85	3.73	3.69	2.0	2.6	2.3	Excavation by backhoe	Nil				
18-Jan-10	09:42	Sunny	<1	21.10	21.10	21.10	6.00	6.07	6.04	7.40	7.40	7.40	6.08	6.15	6.12	4.7	4.6	4.7	Excavation by backhoe	Nil				
20-Jan-10	10:00	Fine	<1	21.70	21.80	21.75	5.66	5.71	5.69	7.35	7.36	7.36	6.12	6.17	6.15	2.0	2.0	2.0	Excavation by backhoe	Nil				
22-Jan-10	09:38	Cloudy	<1	19.30	19.30	19.30	6.22	6.18	6.20	7.48	7.47	7.48	5.33	5.46	5.40	4.5	3.4	4.0	Excavation by backhoe	Nil				
25-Jan-10	09:37	Fine	<1	22.50	22.50	22.50	6.99	6.92	6.96	7.48	7.49	7.49	3.51	3.45	3.48	2.0	2.0	2.0	Excavation by backhoe	Nil				
27-Jan-10	10:27	Fine	<1	22.70	22.70	22.70	5.62	5.69	5.66	7.50	7.50	7.50	2.77	2.83	2.80	2.0	2.0	2.0	Excavation by backhoe	Nil				
29-Jan-10	10:00	Fine	<1	22.50	22.60	22.55	6.02	6.06	6.04	7.22	7.22	7.22	1.57	1.66	1.62	2.0	2.0	2.0	Excavation by backhoe	Nil				
02-Jan-10	09:12	Fine	<1	19.80	19.70	19.75	6.71	6.67	6.69	7.52	7.52	7.52	1.80	1.88	1.84	2.0	2.0	2.0	Excavation by backhoe	Nil				
04-Jan-10	09:23	Sunny	<1	21.00	21.00	21.00	6.23	6.30	6.27	7.55	7.56	7.56	1.75	1.78	1.77	2.0	2.0	2.0	Excavation by backhoe	Nil				
06-Jan-10	09:12	Cloudy	<1	18.10	18.10	18.10	5.87	5.95	5.91	7.27	7.28	7.28	2.1											

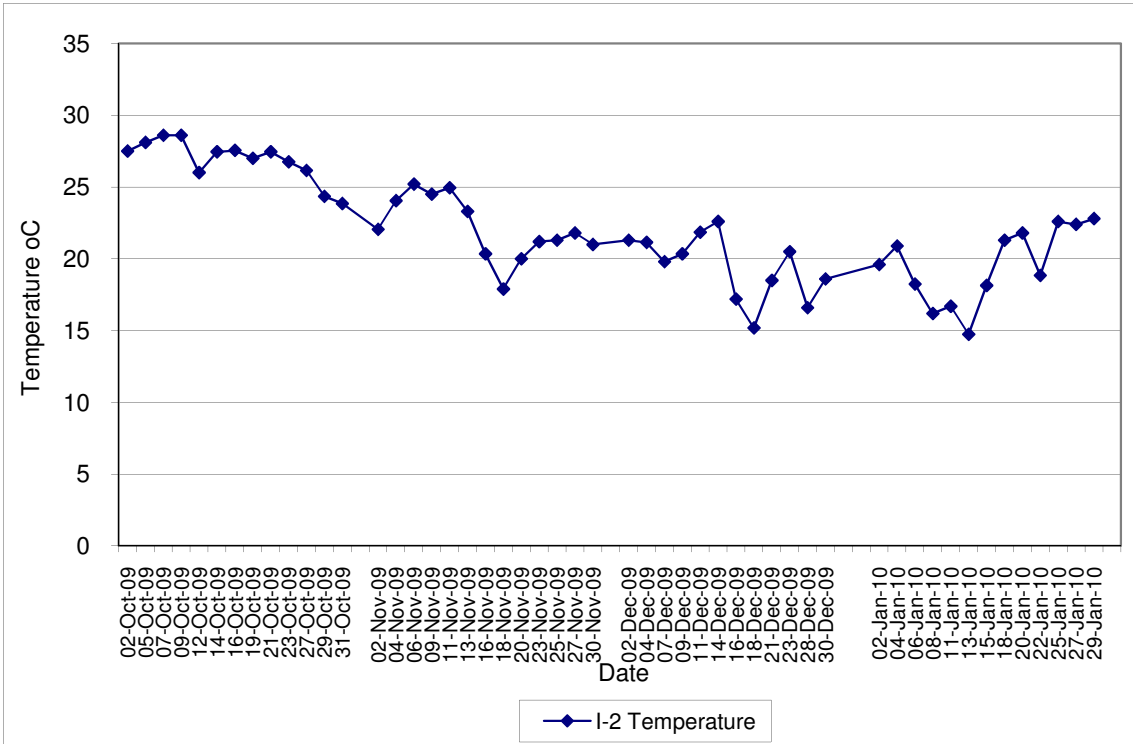
**Contract No. DC/2007/12 - Design and Construction of Tsuen Wan Drainage Tunnel
 Water Quality Results at Sik Sik Yuen Ho Fung College (I-1)
 Oct-09 to Jan-10**



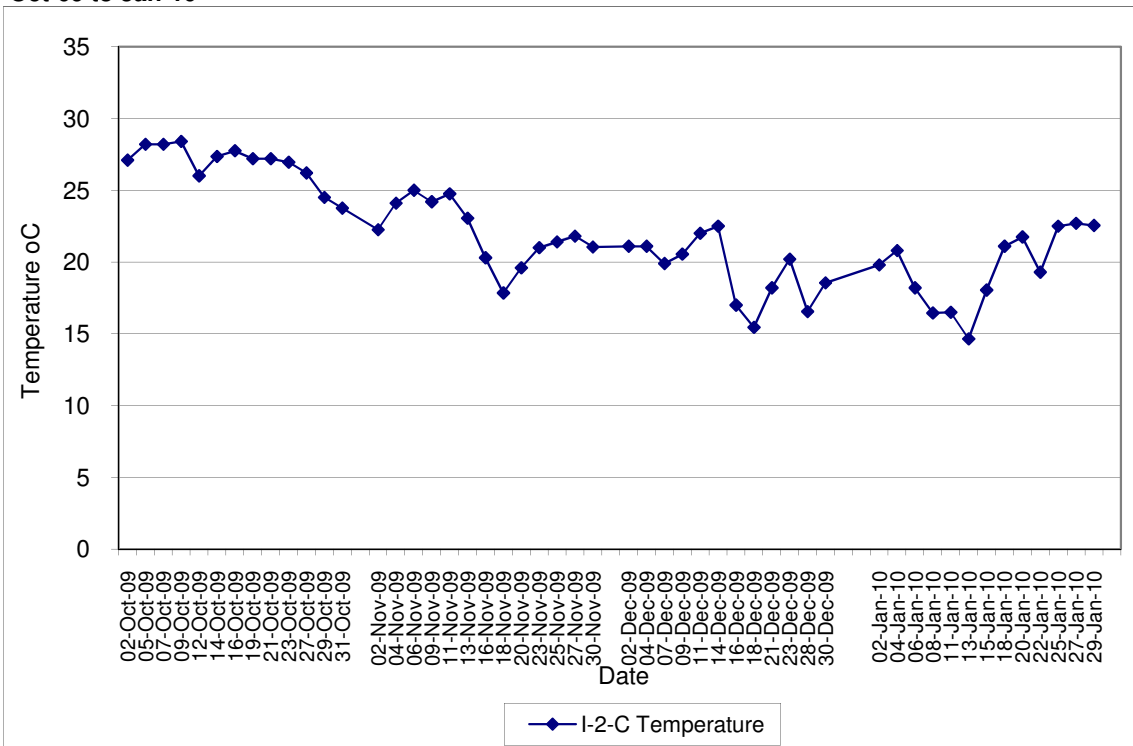
**Contract No. DC/2007/12 - Design and Construction of Tsuen Wan Drainage Tunnel
 Water Quality Results at Sik Sik Yuen Ho Fung College (I-1-C)
 Oct-09 to Jan-10**



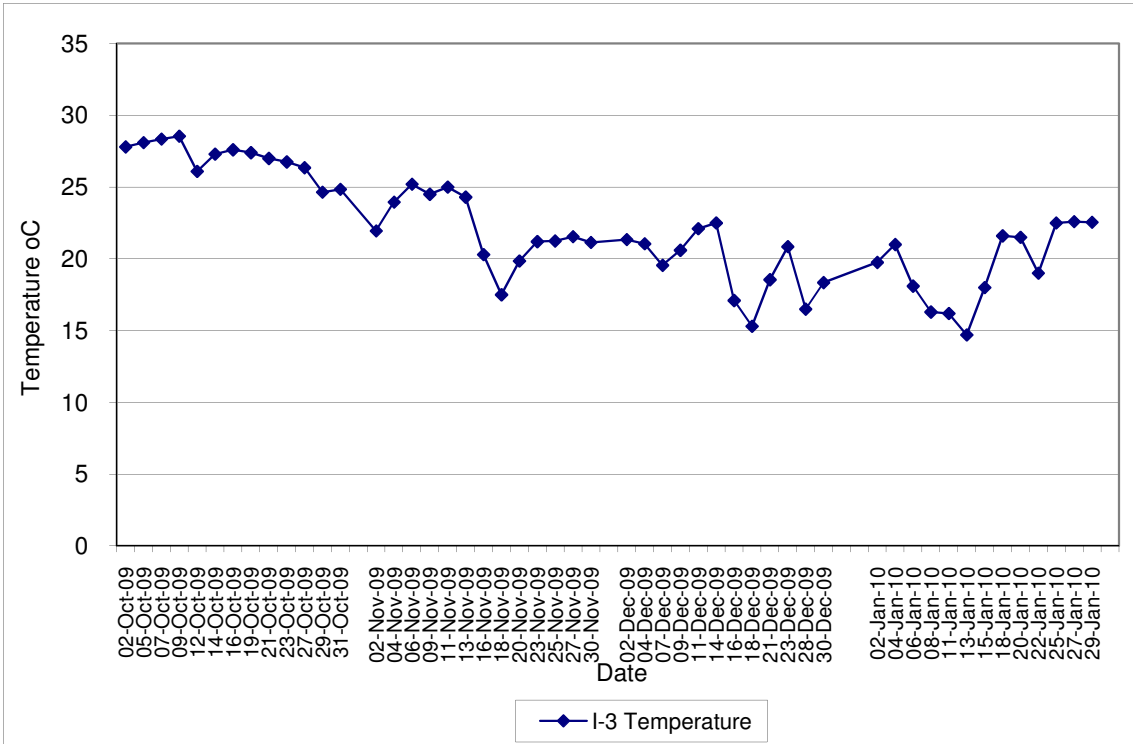
**Contract No. DC/2007/12 - Design and Construction of Tsuen Wan Drainage Tunnel
 Water Quality Results at Hong Hoi Chee Hong Temple (I-2)
 Oct-09 to Jan-10**



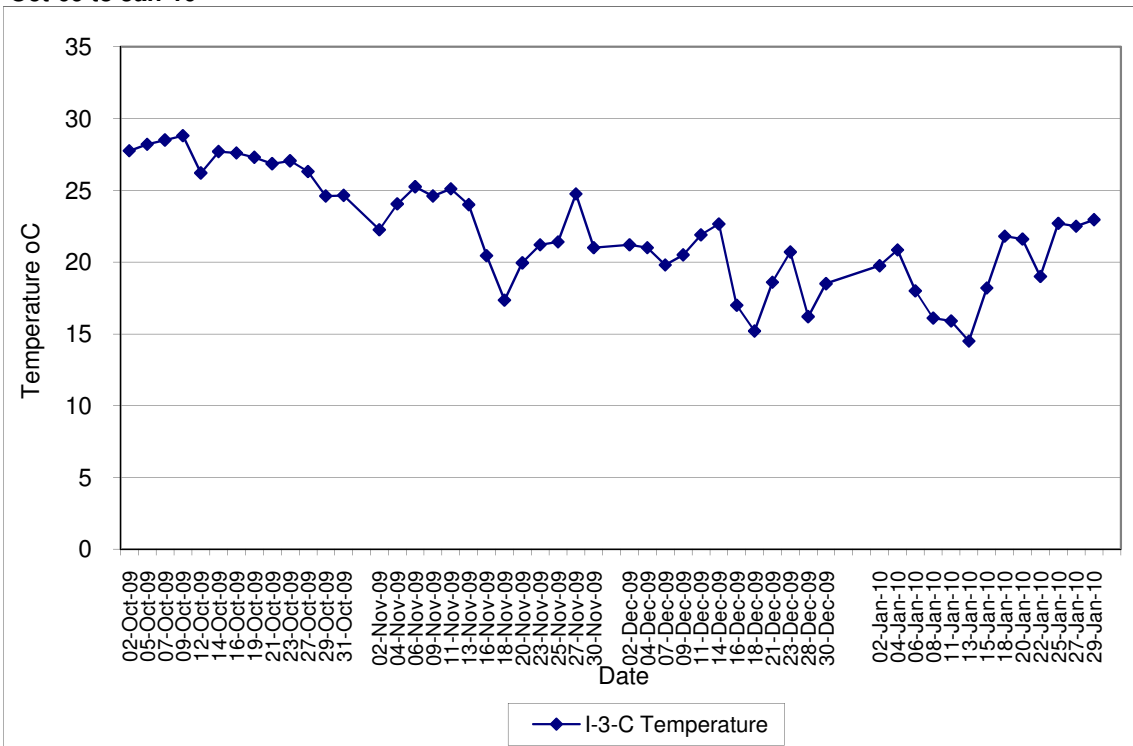
**Contract No. DC/2007/12 - Design and Construction of Tsuen Wan Drainage Tunnel
 Water Quality Results at Hong Hoi Chee Hong Temple (I-2-C)
 Oct-09 to Jan-10**



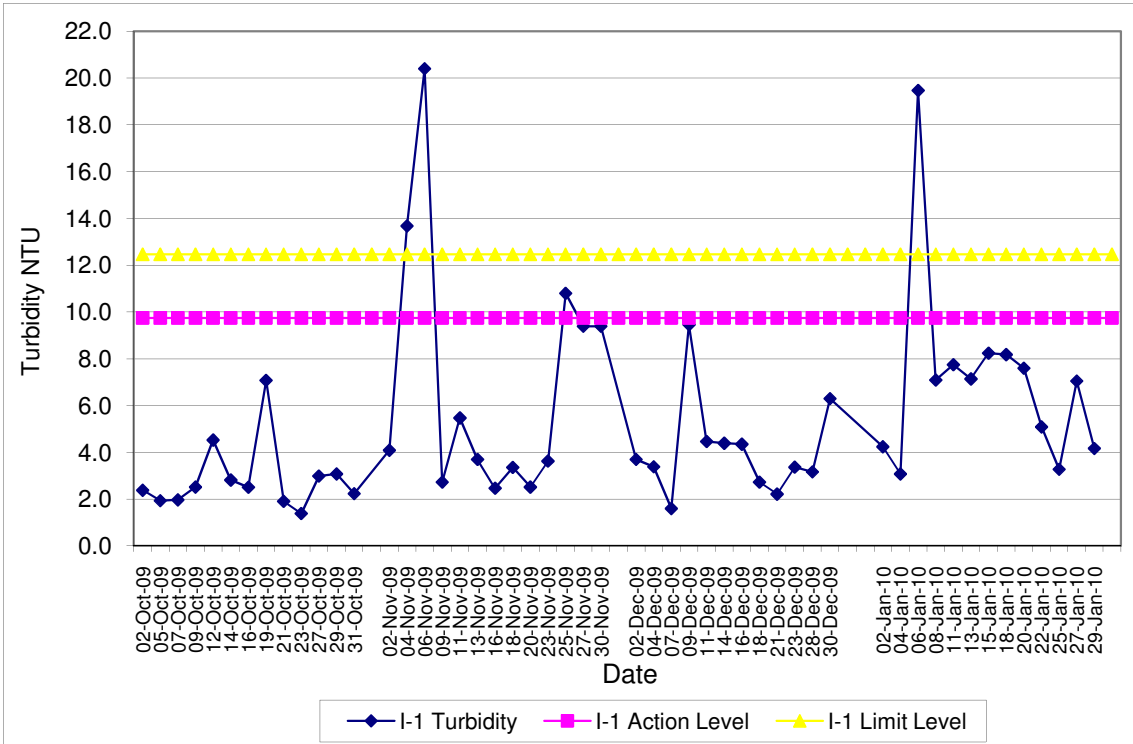
Contract No. DC/2007/12 - Design and Construction of Tsuen Wan Drainage Tunnel
Water Quality Results at Squatters (I-3)
Oct-09 to Jan-10



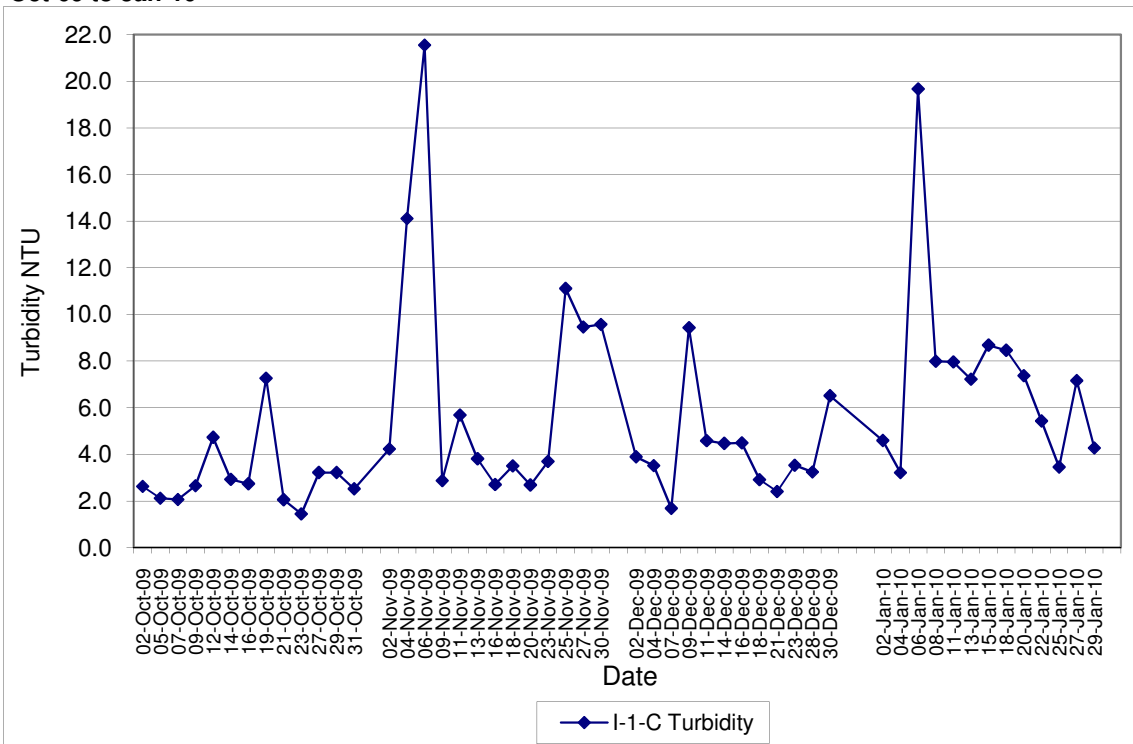
Contract No. DC/2007/12 - Design and Construction of Tsuen Wan Drainage Tunnel
Water Quality Results at Squatters (I-3-C)
Oct-09 to Jan-10



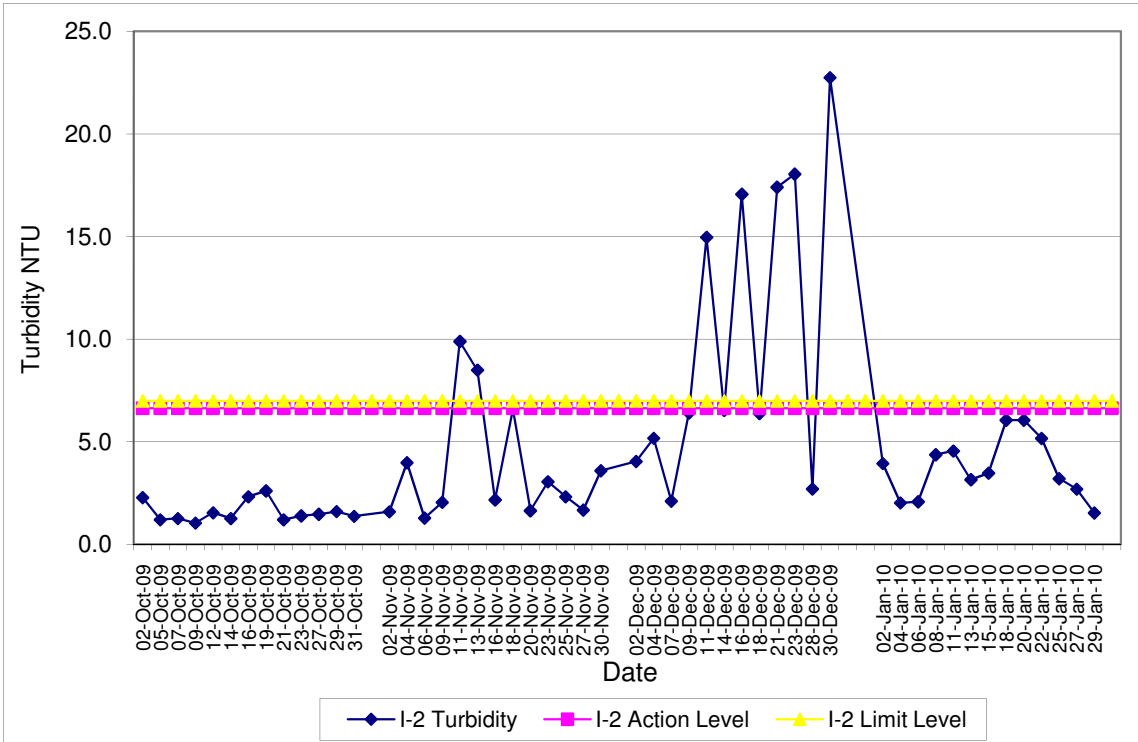
**Contract No. DC/2007/12 - Design and Construction of Tsuen Wan Drainage Tunnel
Water Quality Results at Sik Sik Yuen Ho Fung College (I-1)
Oct-09 to Jan-10**



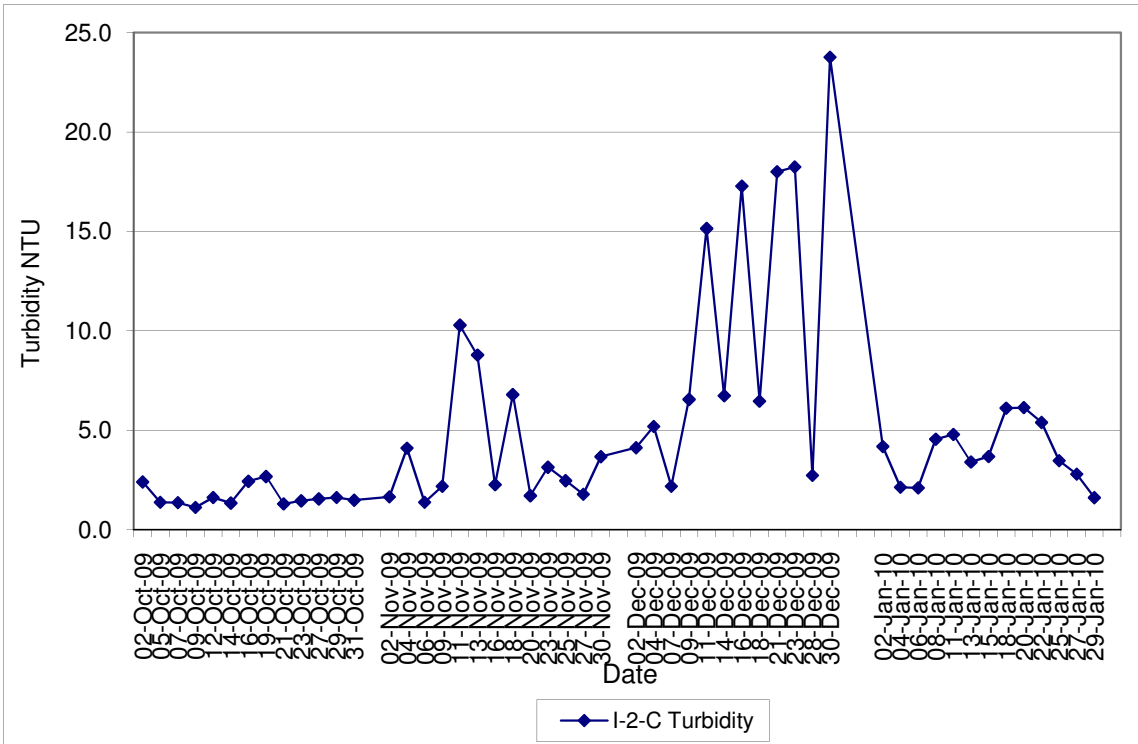
**Contract No. DC/2007/12 - Design and Construction of Tsuen Wan Drainage Tunnel
Water Quality Results at Sik Sik Yuen Ho Fung College (I-1-C)
Oct-09 to Jan-10**



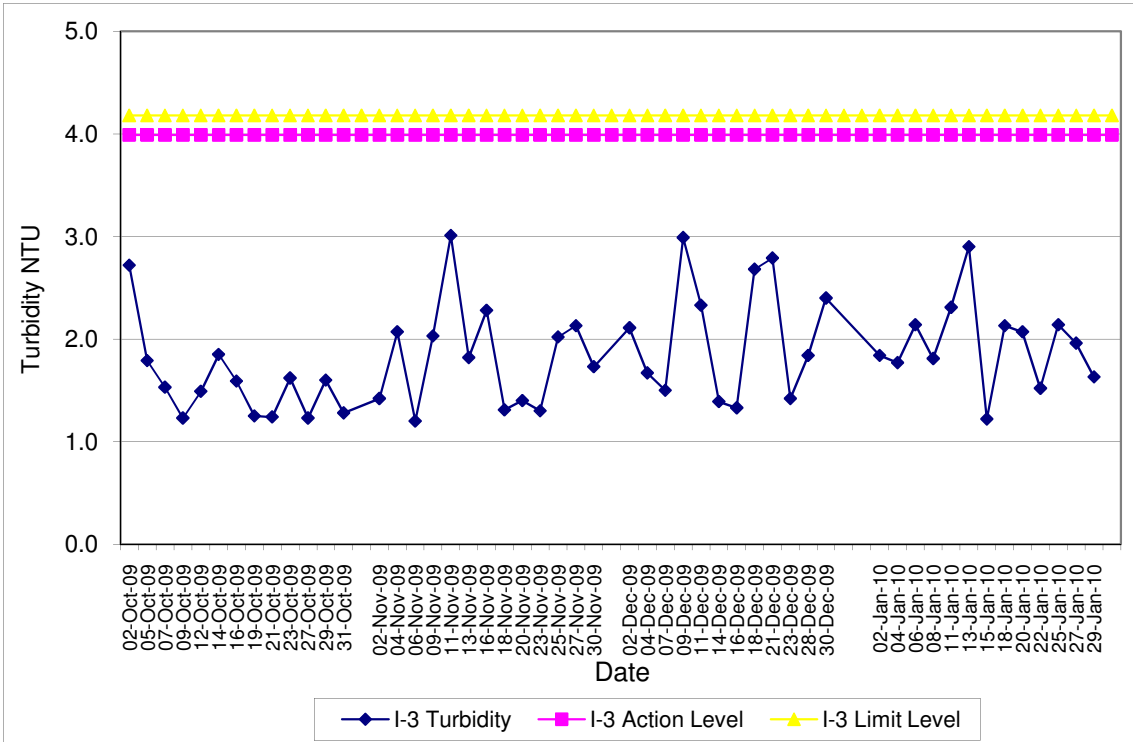
Contract No. DC/2007/12 - Design and Construction of Tsuen Wan Drainage Tunnel
Water Quality Results at Hong Hoi Chee Hong Temple (I-2)
Oct-09 to Jan-10



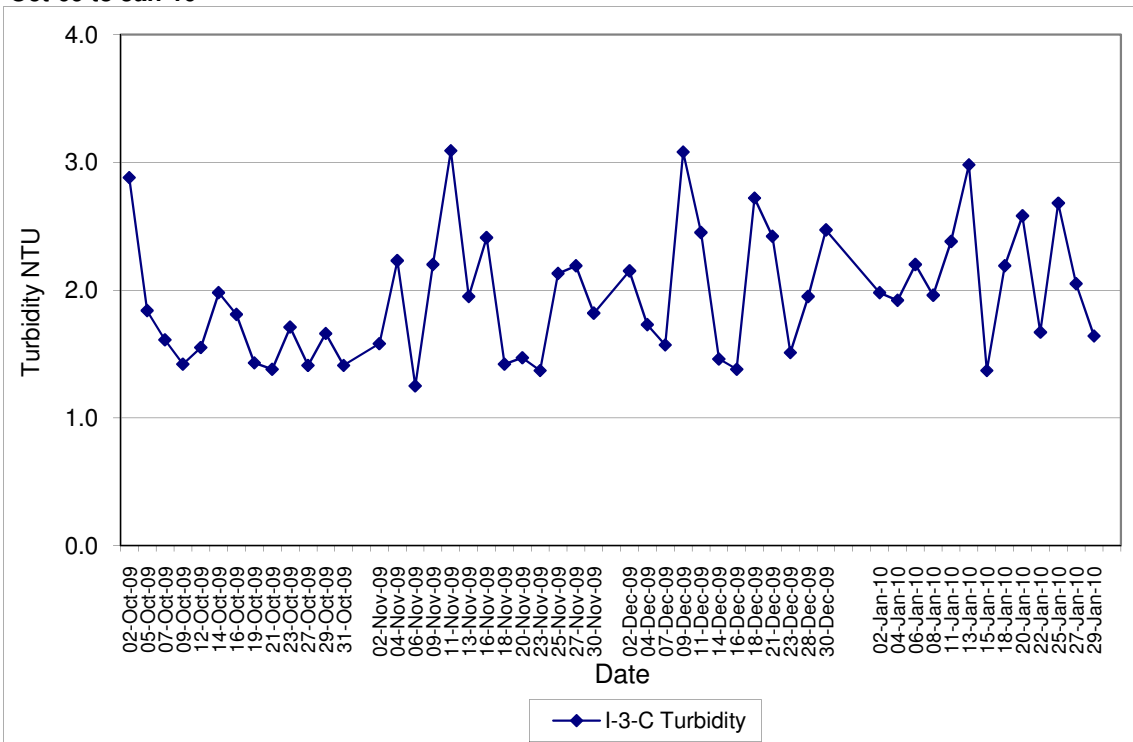
Contract No. DC/2007/12 - Design and Construction of Tsuen Wan Drainage Tunnel
Water Quality Results at Hong Hoi Chee Hong Temple (I-2-C)
Oct-09 to Jan-10



Contract No. DC/2007/12 - Design and Construction of Tsuen Wan Drainage Tunnel
Water Quality Results at Squatters (I-3)
Oct-09 to Jan-10



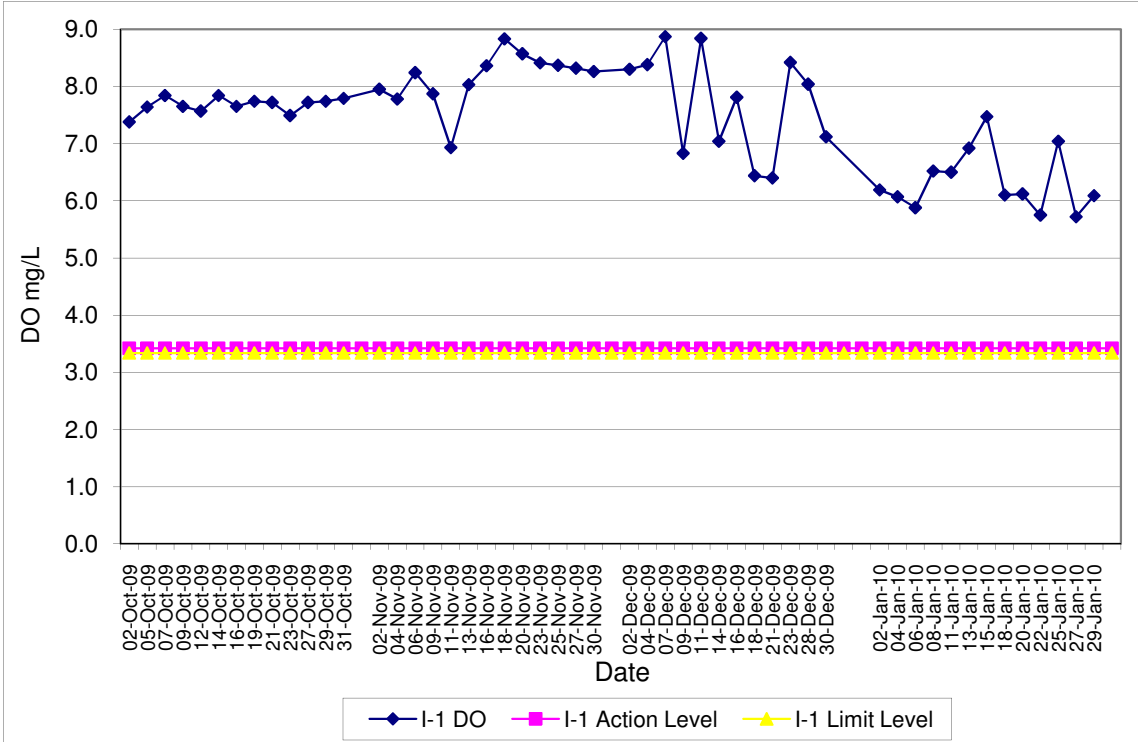
Contract No. DC/2007/12 - Design and Construction of Tsuen Wan Drainage Tunnel
Water Quality Results at Squatters (I-3-C)
Oct-09 to Jan-10



**Contract No. DC/2007/12 - Design and Construction of Tsuen Wan Drainage Tunnel
Water Quality Results at Sik Sik Yuen Ho Fung College (I-1)**

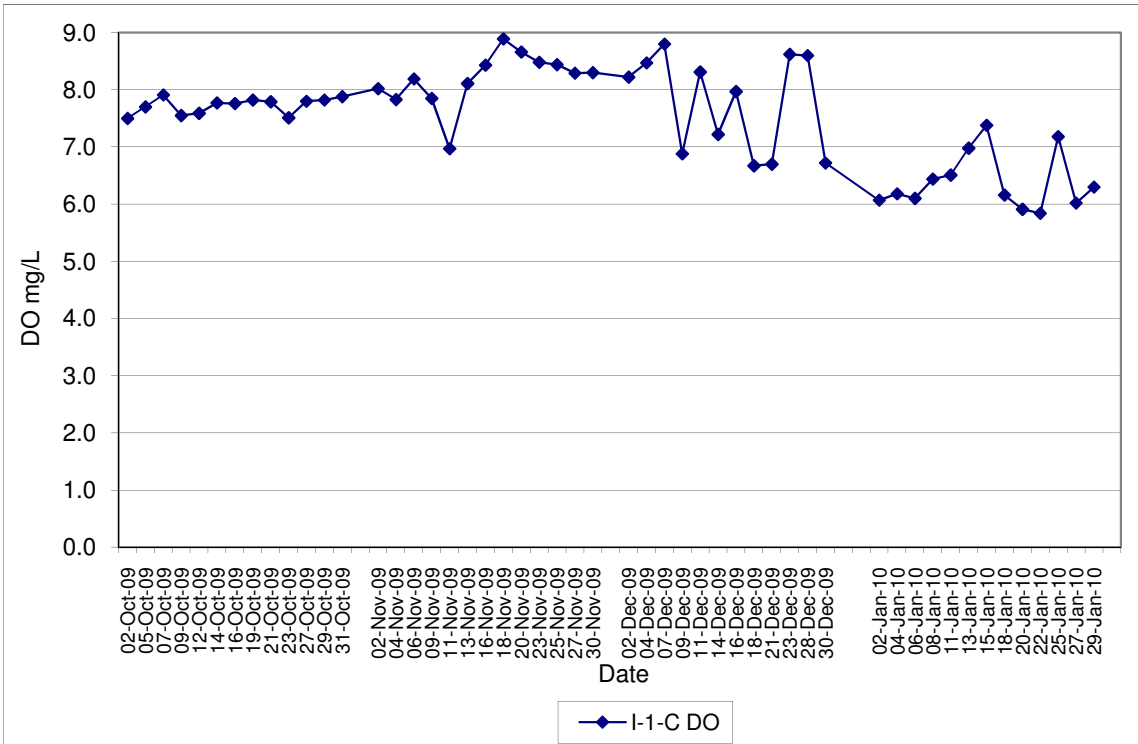
Oct-09 to Jan-10

Note: Exceedances of Action / Limit Levels occur when the levels of DO are below the respective limit levels.



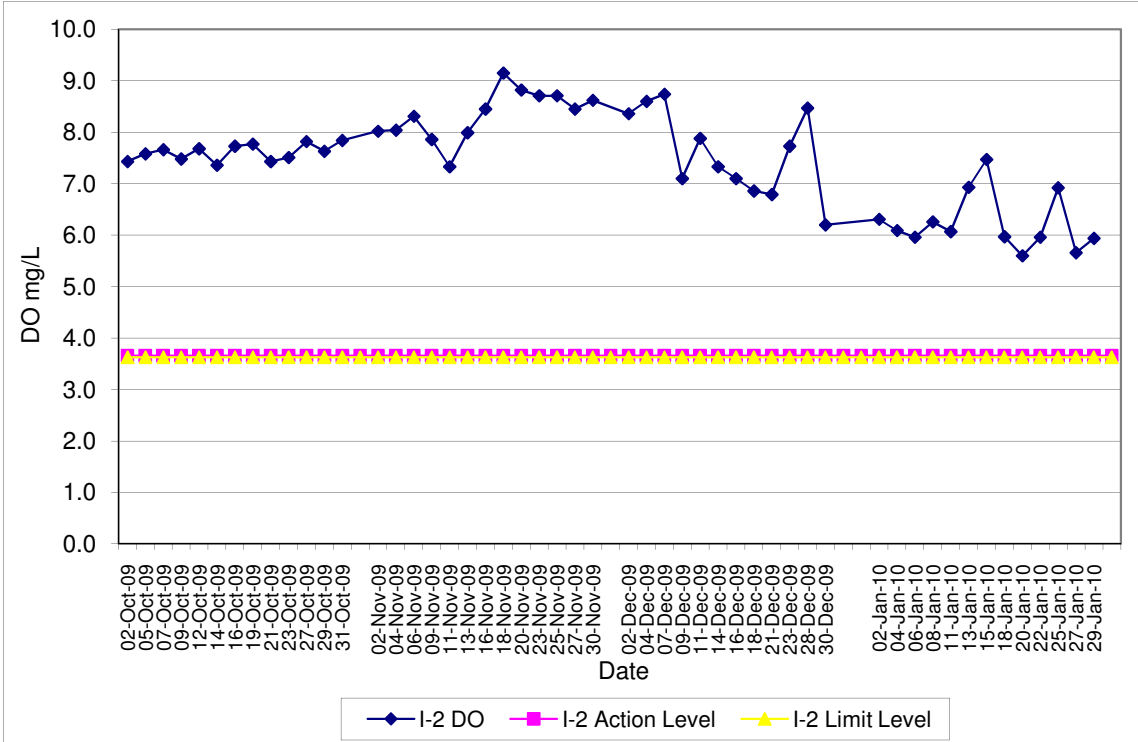
**Contract No. DC/2007/12 - Design and Construction of Tsuen Wan Drainage Tunnel
Water Quality Results at Sik Sik Yuen Ho Fung College (I-1-C)**

Oct-09 to Jan-10

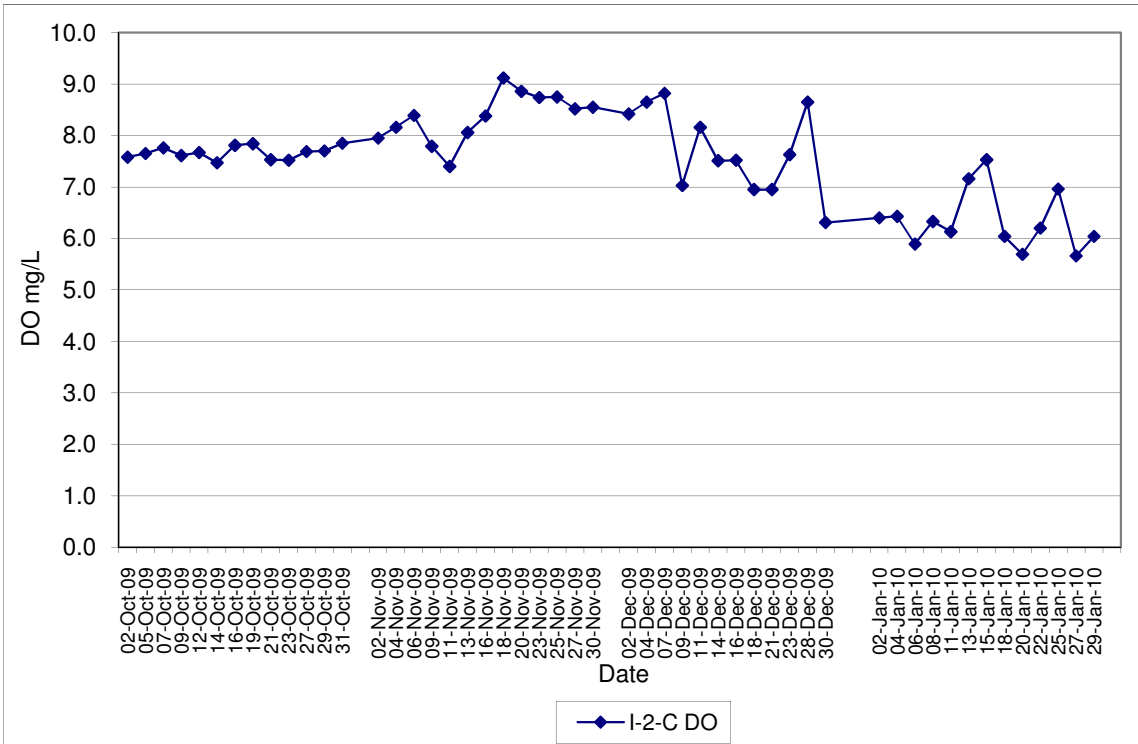


Contract No. DC/2007/12 - Design and Construction of Tsuen Wan Drainage Tunnel
Water Quality Results at Hong Hoi Chee Hong Temple (I-2)
Oct-09 to Jan-10

Note: Exceedances of Action / Limit Levels occur when the levels of DO are below the respective limit levels.

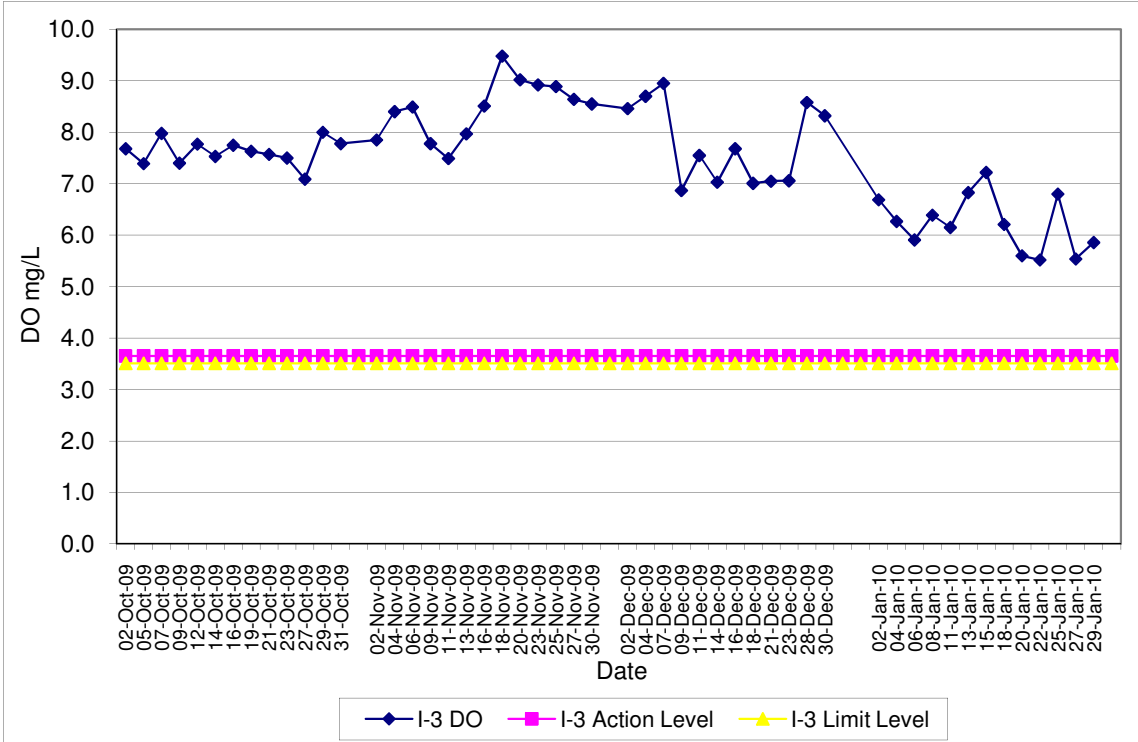


Contract No. DC/2007/12 - Design and Construction of Tsuen Wan Drainage Tunnel
Water Quality Results at Hong Hoi Chee Hong Temple (I-2-C)
Oct-09 to Jan-10

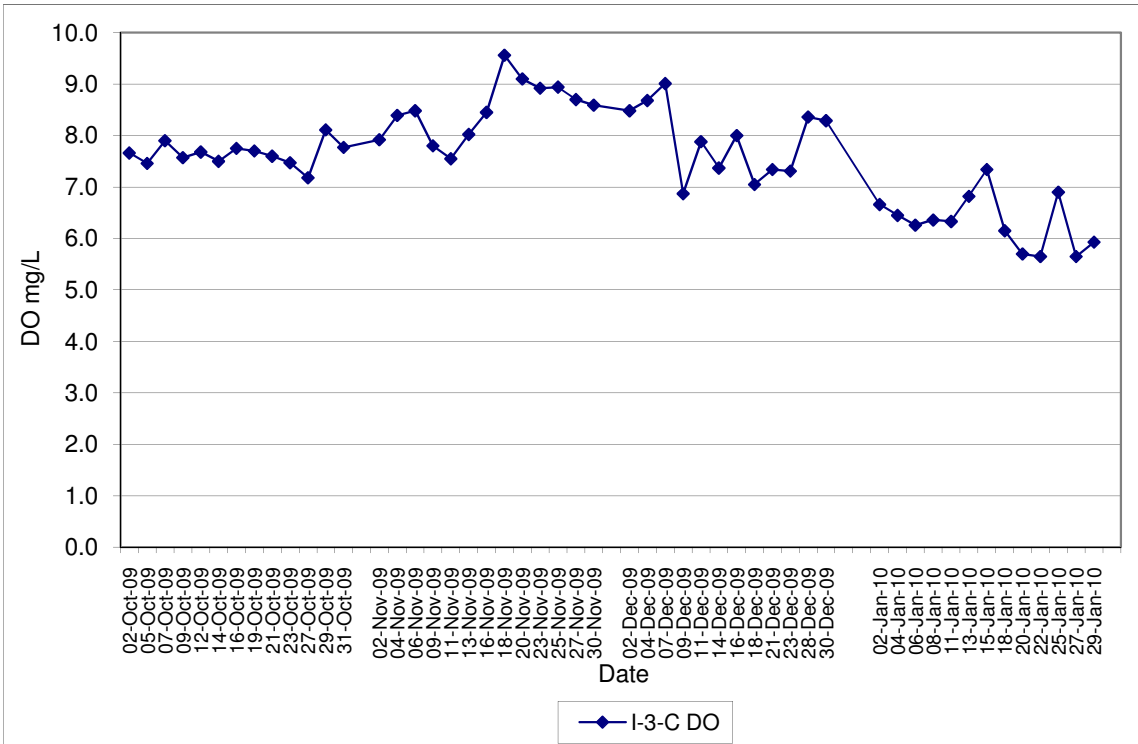


Contract No. DC/2007/12 - Design and Construction of Tsuen Wan Drainage Tunnel
Water Quality Results at Squatters (I-3)
Oct-09 to Jan-10

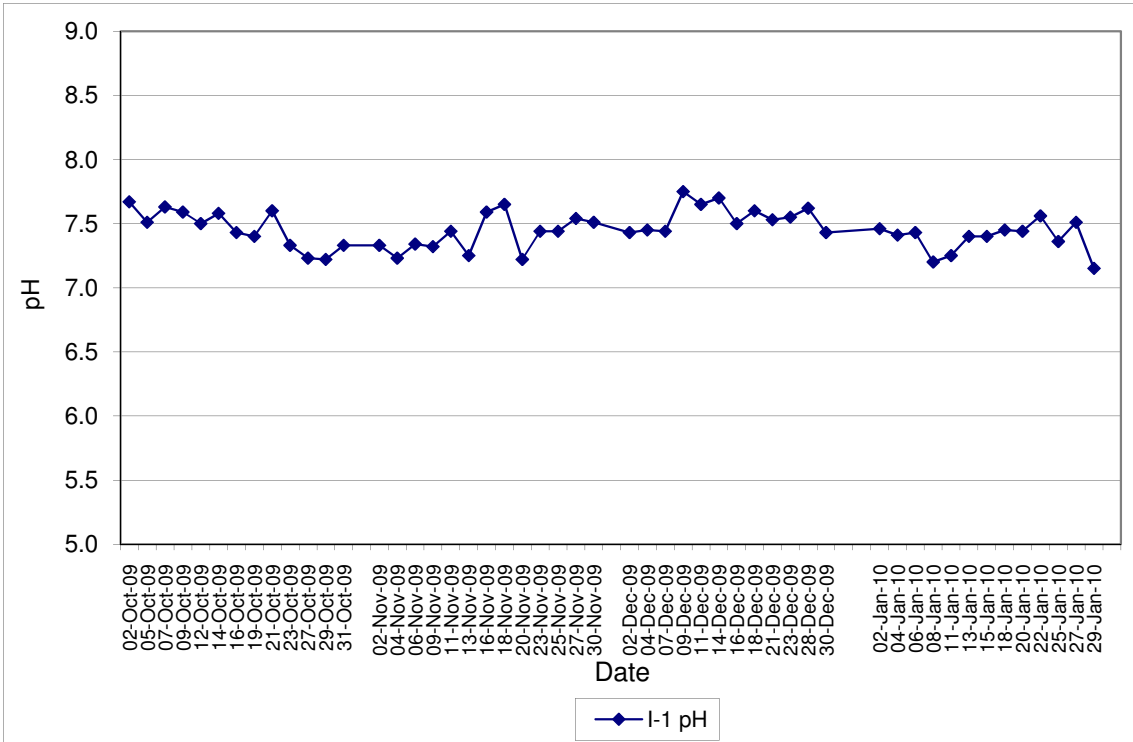
Note: Exceedances of Action / Limit Levels occur when the levels of DO are below the respective limit levels.



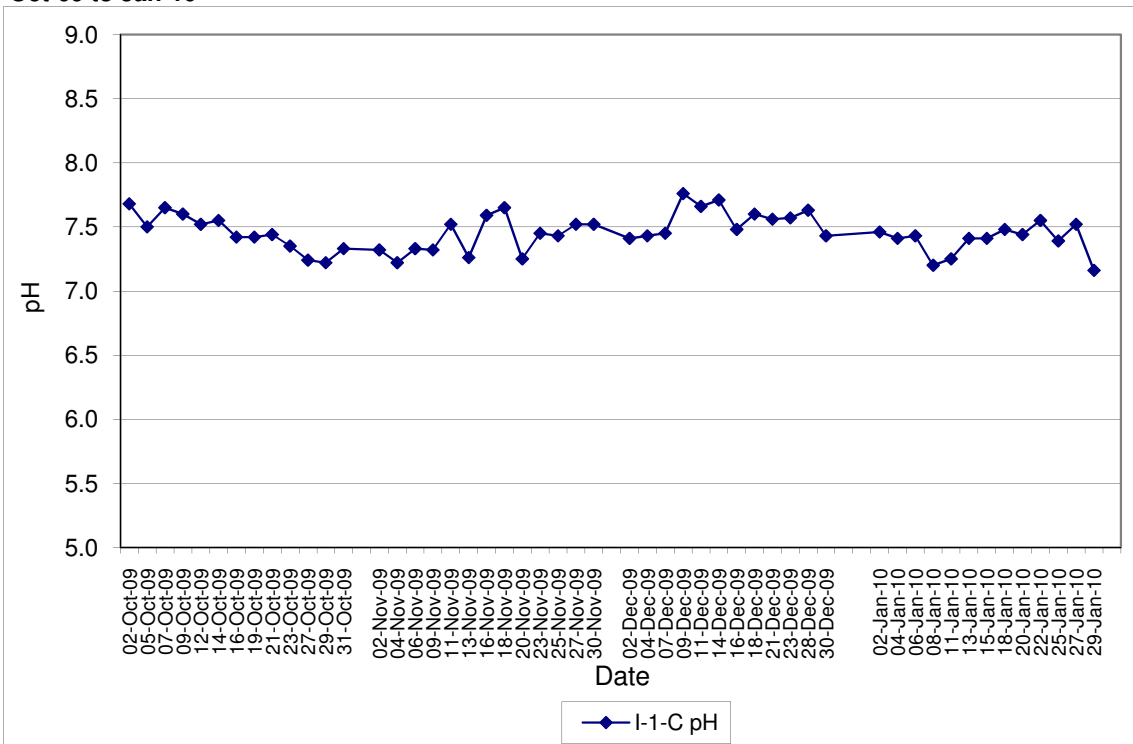
Contract No. DC/2007/12 - Design and Construction of Tsuen Wan Drainage Tunnel
Water Quality Results at Squatters (I-3-C)
Oct-09 to Jan-10



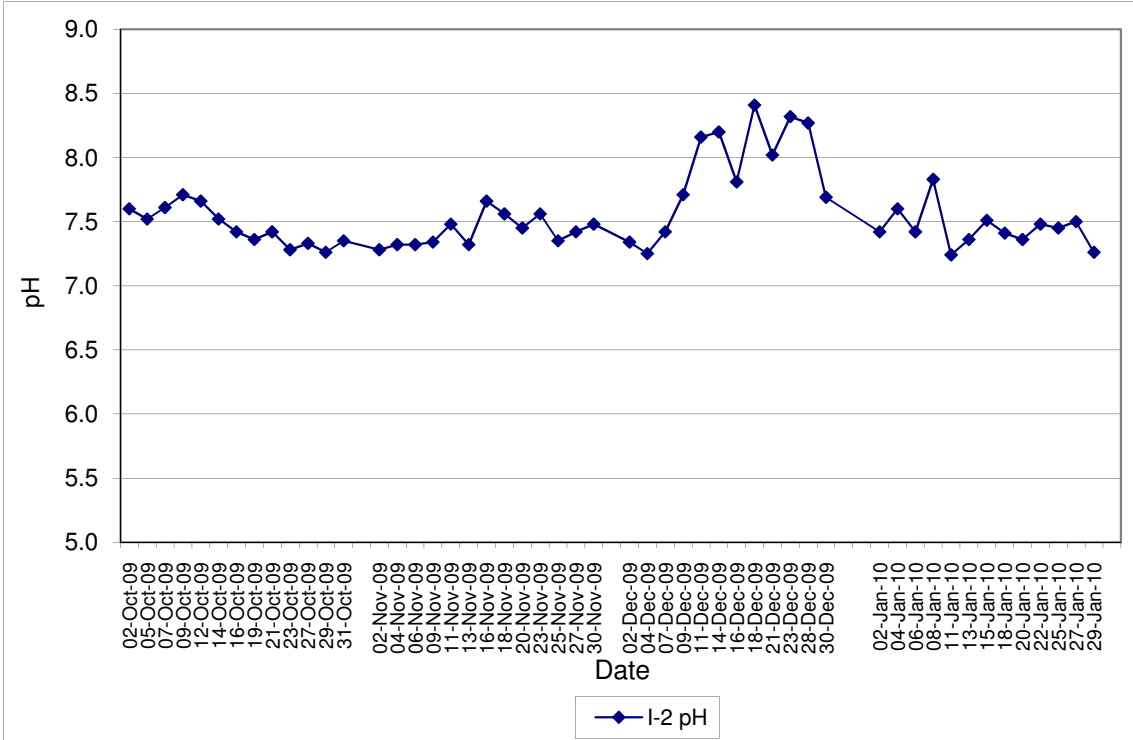
**Contract No. DC/2007/12 - Design and Construction of Tsuen Wan Drainage Tunnel
 Water Quality Results at Sik Sik Yuen Ho Fung College (I-1)
 Oct-09 to Jan-10**



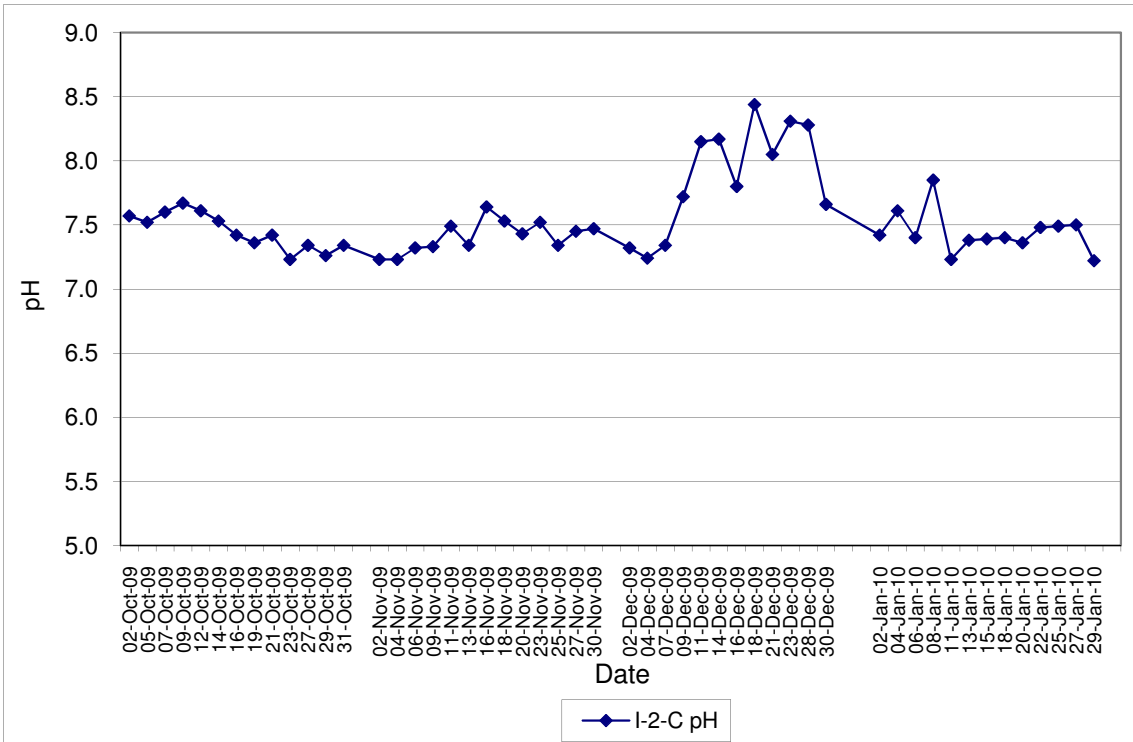
**Contract No. DC/2007/12 - Design and Construction of Tsuen Wan Drainage Tunnel
 Water Quality Results at Sik Sik Yuen Ho Fung College (I-1-C)
 Oct-09 to Jan-10**



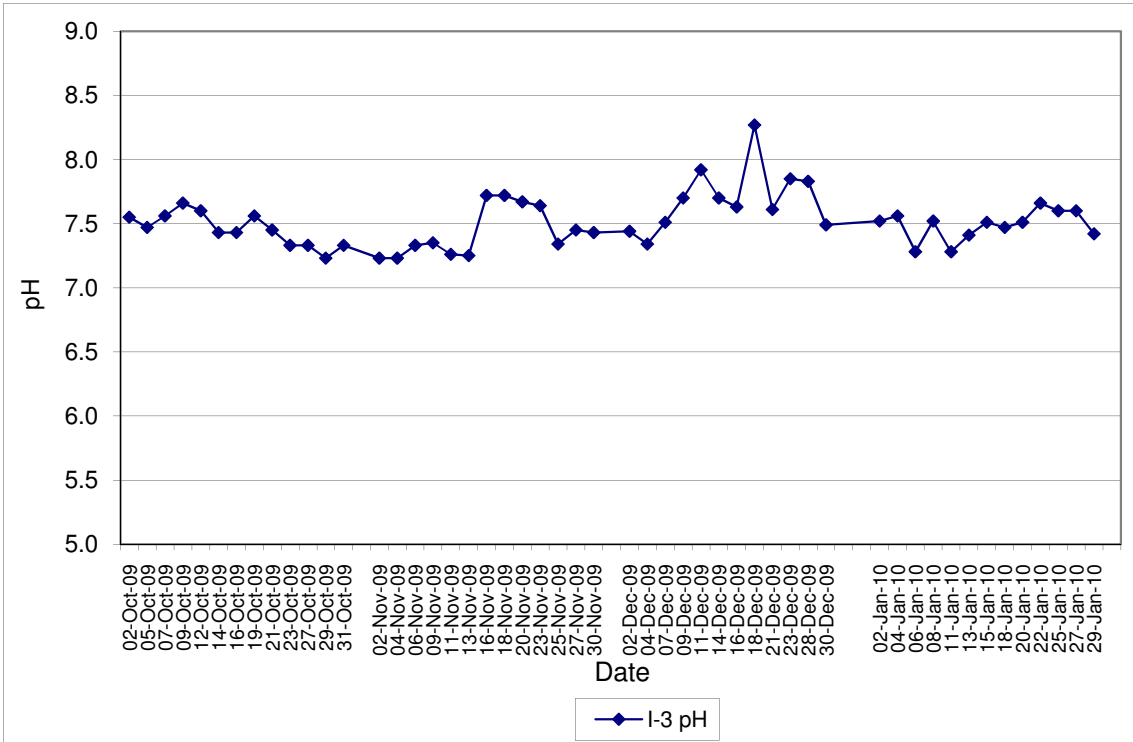
**Contract No. DC/2007/12 - Design and Construction of Tsuen Wan Drainage Tunnel
Water Quality Results at Hong Hoi Chee Hong Temple (I-2)
Oct-09 to Jan-10**



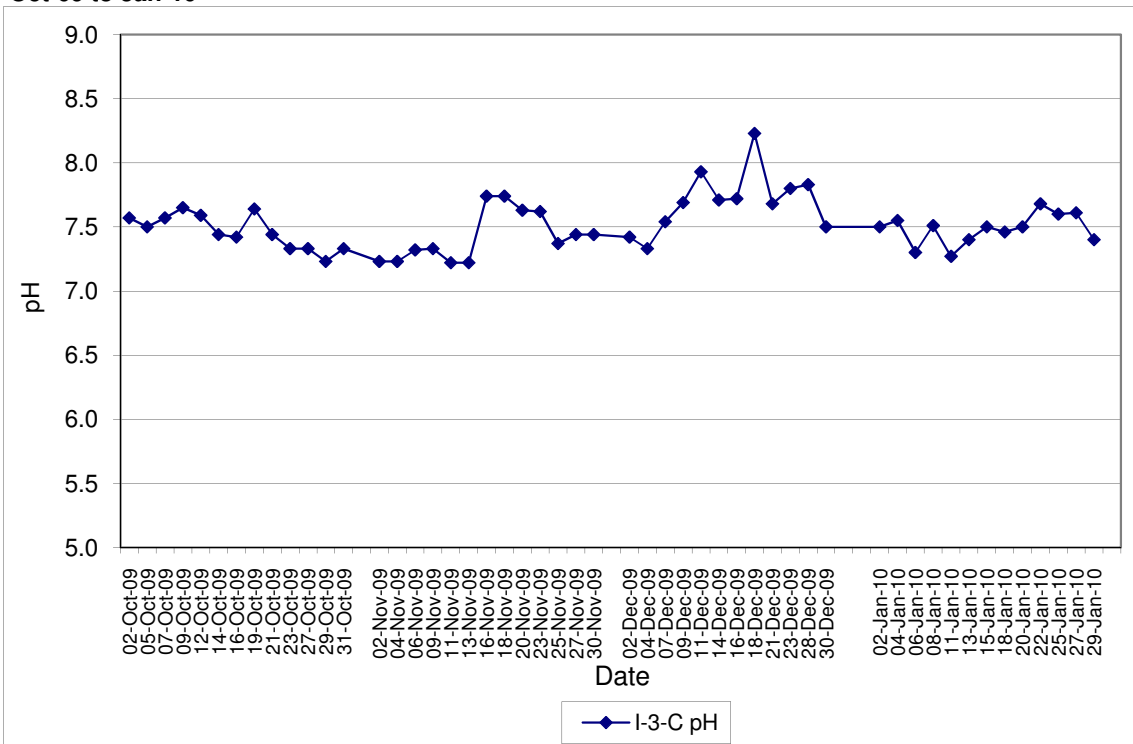
**Contract No. DC/2007/12 - Design and Construction of Tsuen Wan Drainage Tunnel
Water Quality Results at Hong Hoi Chee Hong Temple (I-2-C)
Oct-09 to Jan-10**



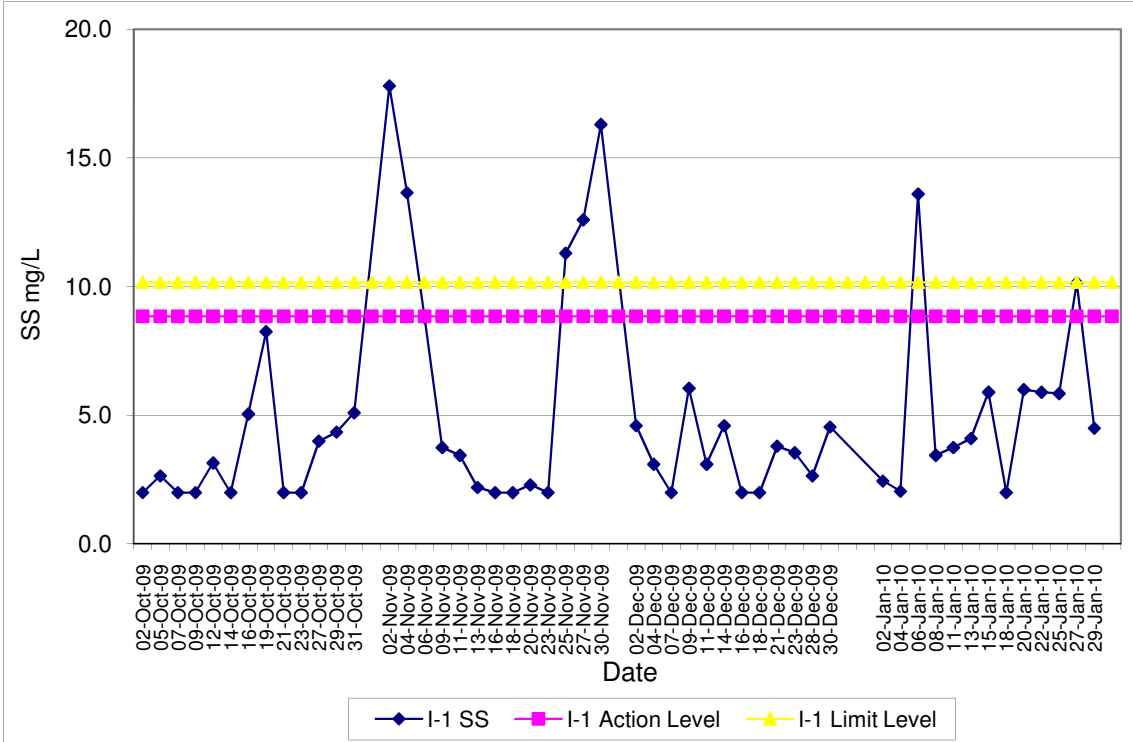
**Contract No. DC/2007/12 - Design and Construction of Tsuen Wan Drainage Tunnel
Water Quality Results at Squatters (I-3)
Oct-09 to Jan-10**



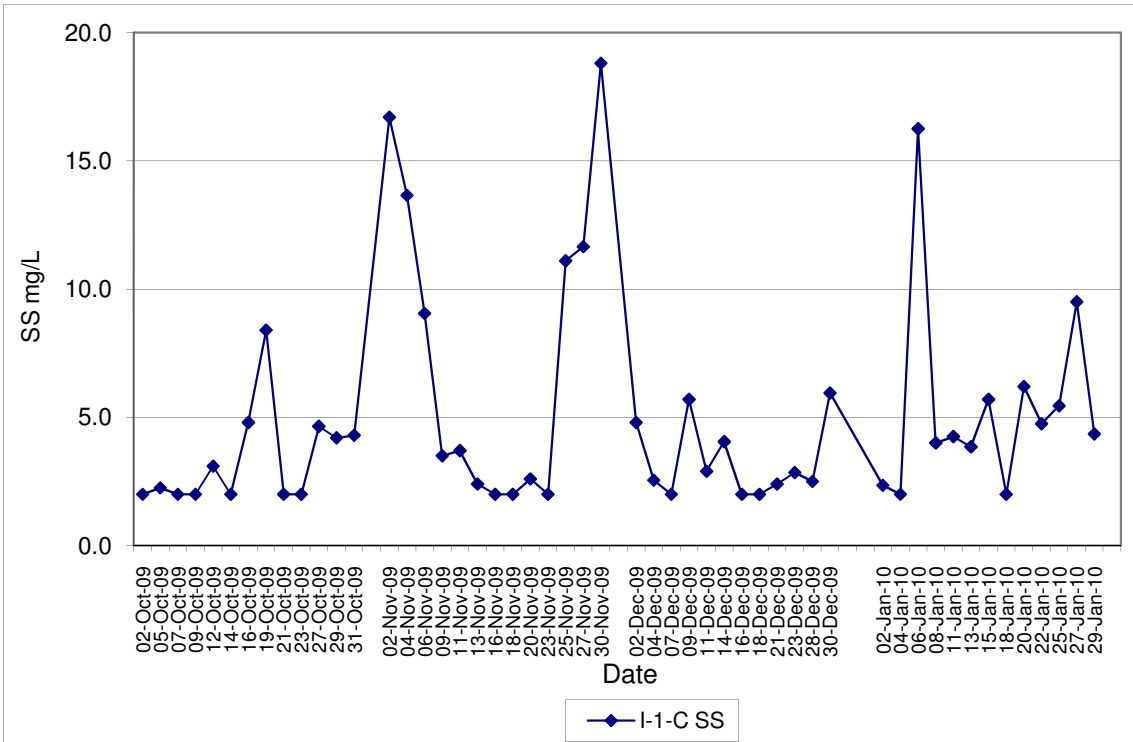
**Contract No. DC/2007/12 - Design and Construction of Tsuen Wan Drainage Tunnel
Water Quality Results at Squatters (I-3-C)
Oct-09 to Jan-10**



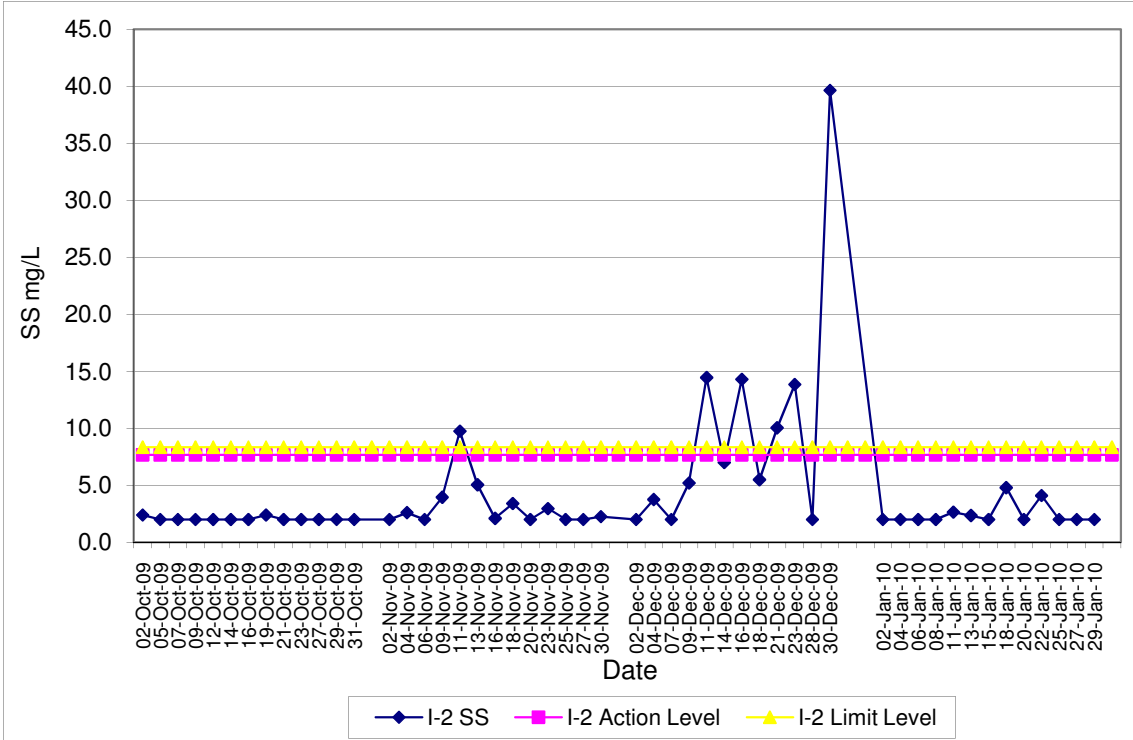
**Contract No. DC/2007/12 - Design and Construction of Tsuen Wan Drainage Tunnel
 Water Quality Results at Sik Sik Yuen Ho Fung College (I-1)
 Oct-09 to Jan-10**



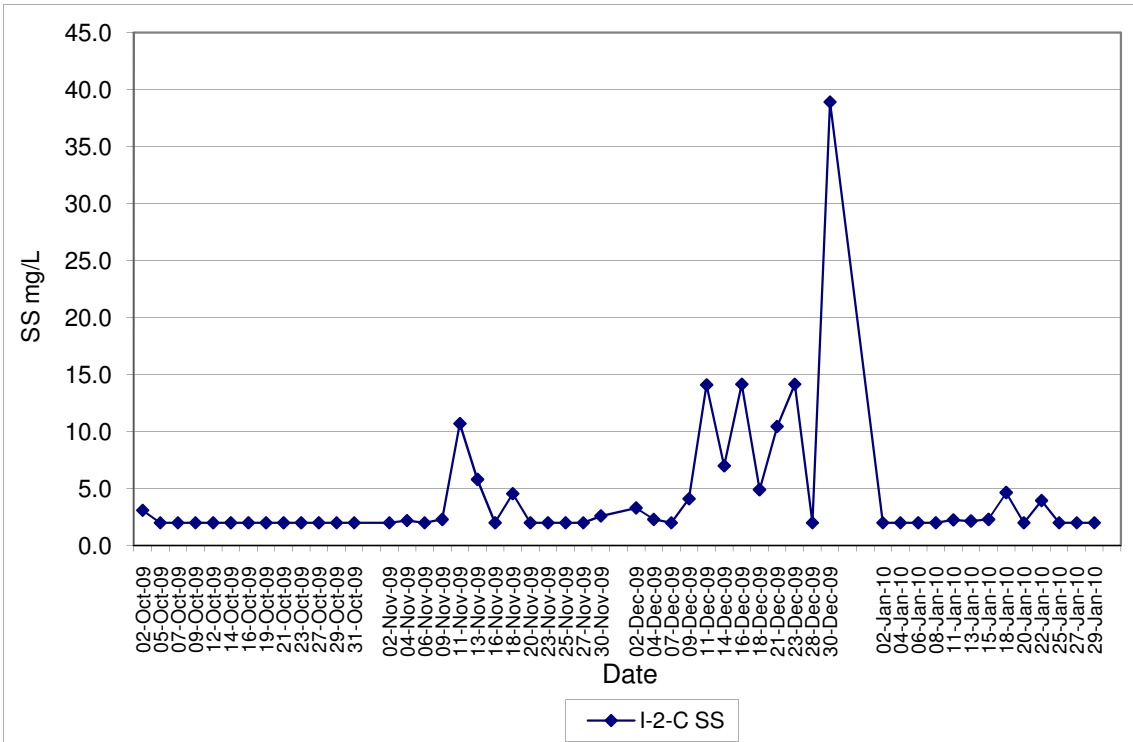
**Contract No. DC/2007/12 - Design and Construction of Tsuen Wan Drainage Tunnel
 Water Quality Results at Sik Sik Yuen Ho Fung College (I-1-C)
 Oct-09 to Jan-10**



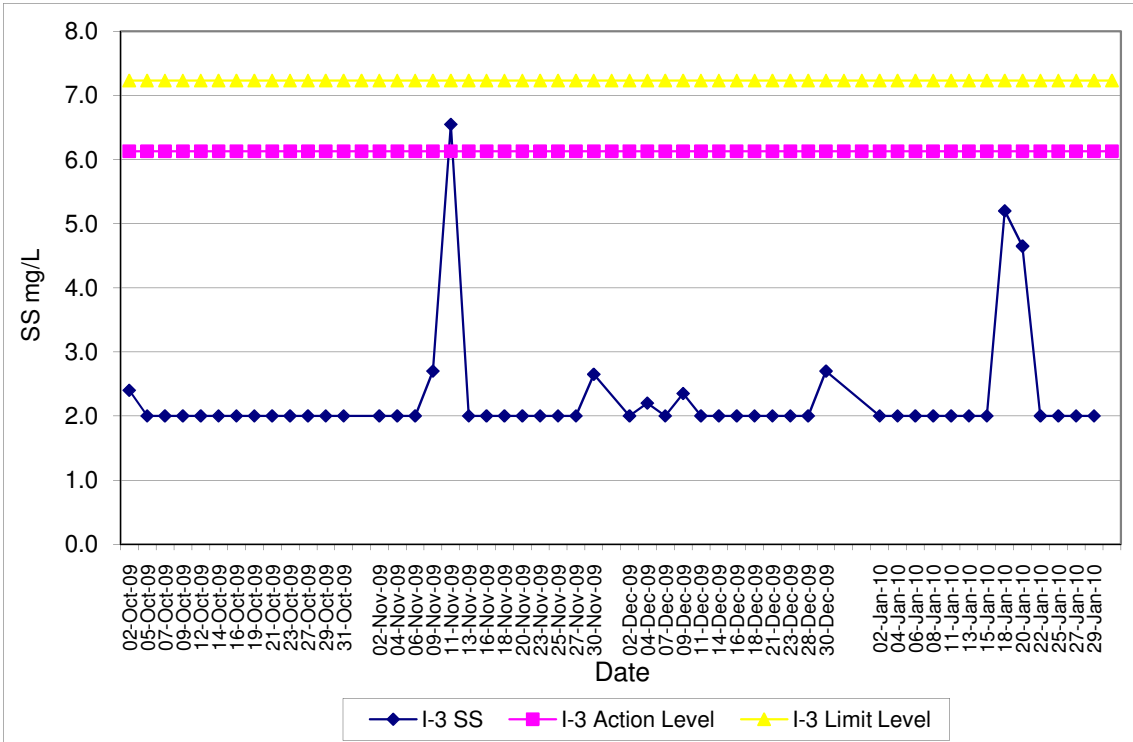
**Contract No. DC/2007/12 - Design and Construction of Tsuen Wan Drainage Tunnel
 Water Quality Results at Hong Hoi Chee Hong Temple (I-2)
 Oct-09 to Jan-10**



**Contract No. DC/2007/12 - Design and Construction of Tsuen Wan Drainage Tunnel
 Water Quality Results at Hong Hoi Chee Hong Temple (I-2-C)
 Oct-09 to Jan-10**



Contract No. DC/2007/12 - Design and Construction of Tsuen Wan Drainage Tunnel
Water Quality Results at Squatters (I-3)
Oct-09 to Jan-10



Contract No. DC/2007/12 - Design and Construction of Tsuen Wan Drainage Tunnel
Water Quality Results at Squatters (I-3-C)
Oct-09 to Jan-10

