

Interim Notifications of Environmental Quality Limits Exceedances

Incident Report on Action Level or Limit Level Non-compliance

Project	Tsuen Wan Drainage Tunnel
Date	04-Nov-09
Time	10:00 AM
Monitoring Location	Sik Sik Yuen Ho Fung College (I-1)
Parameter	Turbidity
Action & Limit Levels	9.75 / 12.47
Measured Level	13.68
Possible reason for Action or Limit Level Non-compliance	A high turbidity level of 14.11 is recorded at Control Station (I-1-C)
Actions taken / to be taken	The measured turbidity level was above baseline Action and Limit Levels as well as the range of baseline turbidity concentration (3.13 - 13.15 NTU). Construction activities, such as rock breaking, rock dowel and mucking out, were undertaken during the measurement and no direct disturbance was observed from the site. Thus, the exceedance is considered to be contributed by the high turbidity level of control station (I-1-C) and no action should be required.
Remarks	Following mitigation measures were provided: (1) sandbags were used at the gap of the bridge to avoid wastewater from site activities directly running down to the channel of I-1. (2) The working site was segregated with a wall and no wastewater was observed down to the channel-I1. (3) Sand/silts removal facilities was installed at the location of I-1.

Prepared by: Terence Kong
 Designation: Environmental Team Leader

Signature:



Date: 05-Nov-09

**Photographic record for exceedance of Turbidity recorded at Sik Sik Yuen Ho Fung College (I-1)
on 04-Nov-09**



Site photo



Photo taken at I-1



Photo taken at I-1-C

Interim Notifications of Environmental Quality Limits Exceedances

Incident Report on Action Level or Limit Level Non-compliance

Project	Tsuen Wan Drainage Tunnel
Date	02-Nov-09
Time	10:00 AM
Monitoring Location	Sik Sik Yuen Ho Fung College (I-1)
Parameter	Suspended Solid
Action & Limit Levels	8.85 / 10.17
Measured Level	17.8
Possible reason for Action or Limit Level Non-compliance	A high SS level of 16.7 is recorded at Control Station (I-1-C) and muddy stain was observed at the exit of closed channel at Shing Mun Lane referred to attached photo for details.
Actions taken / to be taken	The measured SS level was above baseline Action and Limit Levels as well as the range of baseline SS level (1 - 10.5 mg/L). Construction activities, such as rock breaking, rock dowel and mucking out, were undertaken during the measurement and no direct disturbance was contributed by project construction activities. The exceedance is considered to be contributed by the high SS level at control station (I-1-C) from the muddy stain and no action should be taken as the SS result at monitoring station was below the action and limit level of control station.
Remarks	Following mitigation measures were provided on site: (1) sandbags were used at the gap of the bridge to avoid wastewater from site activities directly running down to the channel of I-1. (2) The working site was segregated with a wall and no wastewater was observed down to the channel-I1. (3) Sand/silts removal facilities was installed at the location of I-1.

Prepared by: Terence Kong
 Designation: Environmental Team Leader

Signature: 

Date: 07-Nov-09

Photographic record for exceedance of Suspended Solid recorded at Sik Sik Yuen Ho Fung College (I-1) on 02-Nov-09



Site photo



Photo taken at I-1



Photo taken at I-1-C



Rubbish was observed at I-1-C




Muddy stain was observed at the exit of the closed channel at upstream near Shing Mun Lane.

Interim Notifications of Environmental Quality Limits Exceedances

Incident Report on Action Level or Limit Level Non-compliance

Project	Tsuen Wan Drainage Tunnel
Date	04-Nov-09
Time	10:00 AM
Monitoring Location	Sik Sik Yuen Ho Fung College (I-1)
Parameter	Suspended Solid
Action & Limit Levels	8.85 / 10.17
Measured Level	13.7
Possible reason for Action or Limit Level Non-compliance	A high SS level of 13.7 is recorded at Control Station (I-1-C) and muddy stain was observed at the exit of closed channel at Shing Mun Lane referred to attached photo for details.
Actions taken / to be taken	The measured SS level was above baseline Action and Limit Levels as well as the range of baseline SS level (1 - 10.5 mg/L). Construction activities, such as rock breaking, rock dowl and mucking out, were undertaken during the measurement and no direct disturbance was contributed by project construction activities. The exceedance is considered to be contributed by the high SS level at control station (I-1-C) from the muddy stain and no action should be taken as the SS result at monitoring station was below the action and limit level of control station.
Remarks	Following mitigation measures were provided on site: (1) sandbags were used at the gap of the bridge to avoid wastewater from site activities directly running down to the channel of I-1. (2) The working site was segregated with a wall and no wastewater was observed down to the channel-I1. (3) Sand/silts removal facilites was installed at the location of I-1.

Prepared by: Terence Kong
 Designation: Environmental Team Leader
 Signature: 
 Date: 11-Nov-09

Photographic record for exceedance of Suspended Solid recorded at Sik Sik Yuen Ho Fung College (I-1) on 04-Nov-09



Site photo



Photo taken at I-1



Photo taken at I-1-C




Muddy stain was observed at the exit of the closed channel at upstream near Shing Mun Lane.

Interim Notifications of Environmental Quality Limits Exceedances

Incident Report on Action Level or Limit Level Non-compliance

Project	Tsuen Wan Drainage Tunnel
Date	06-Nov-09
Time	10:07 AM
Monitoring Location	Sik Sik Yuen Ho Fung College (I-1)
Parameter	Turbidity
Action & Limit Levels	9.75 / 12.47
Measured Level	20.40
Possible reason for Action or Limit Level Non-compliance	A high turbidity level of 21.55 is recorded at Control Station (I-1-C) muddy stain was observed at the exit of closed channel at Shing Mun Lane referred to attached photo for details.
Actions taken / to be taken	The measured turbidity level was above baseline Action and Limit Levels as well as the range of baseline turbidity concentration (3.13 - 13.15 NTU). Construction activities, such as rock breaking, rock dowel and mucking out, were undertaken during the measurement and no direct disturbance was observed from the site. Thus, the exceedance is considered to be contributed by the high turbidity level of control station (I-1-C) and no action should be taken as the turbidity result at monitoring station was below the action and limit level of control station.
Remarks	Following mitigation measures were provided: (1) sandbags were used at the gap of the bridge to avoid wastewater from site activities directly running down to the channel of I-1. (2) The working site was segregated with a wall and no wastewater was observed down to the channel-I1. (3) Sand/silts removal facilites was installed at the location of I-1. The turbidity level at I-1 was below the baseline and upstream Action & Limit level for monitoring on 09-Nov-09.

Prepared by: Terence Kong
 Designation: Environmental Team Leader
 Signature: 
 Date: 11-Nov-09

Photographic record for exceedance of Turbidity recorded at Sik Sik Yuen Ho Fung College (I-1) on 06-Nov-09



Site photo



Photo taken at I-1



Photo taken at I-1-C




Muddy stain was observed at the exit of the closed channel at upstream near Shing Mun Lane.

Interim Notifications of Environmental Quality Limits Exceedances

Incident Report on Action Level or Limit Level Non-compliance

Project	Tsuen Wan Drainage Tunnel
Date	11-Nov-09
Time	10:27 AM
Monitoring Location	Hong Hoi Chee Hong Temple (I-2)
Parameter	Turbidity
Action & Limit Levels	6.63 / 6.99
Measured Level	9.89
Possible reason for Action or Limit Level Non-compliance	A high turbidity level of 10.29 is recorded at Control Station (I-2-C). There were construction activities of Landslip preventative works for slopes and retaining walls by CEDD at control station. (Refer to the photos below)
Actions taken / to be taken	The measured turbidity level was above baseline Action and Limit Levels as well as the range of baseline turbidity concentration (2.17 - 7.08 NTU). Construction activities, such as Steel Frame Erection and Formwork Erection for skin wall, were undertaken during the measurement and no direct disturbance was observed from the site. Thus, the exceedance is considered to be contributed by the high turbidity level of control station (I-2-C) and no action should be taken as the turbidity result at monitoring station was below the action and limit level of control station. .
Remarks	Following mitigation measures were provided: (1) exposed surfaces were covered or segregated. (2) sandbags were used to avoid wastewater from site activities directly running down to the river of I-2. (3) sand/silts removal facilities was installed at the location of I-2.

Prepared by: Terence Kong
 Designation: Environmental Team Leader
 Signature: 
 Date: 12-Nov-09

Photographic record for exceedance of Turbidity recorded at Hong Hoi Chee Hong Temple (I-2) on 11-Nov-09



Site photo



Photo taken at I-2



Photo taken at I-2-C




Construction activities at I-2-C.

Interim Notifications of Environmental Quality Limits Exceedances

Incident Report on Action Level or Limit Level Non-compliance

Project	Tsuen Wan Drainage Tunnel
Date	09-Nov-09
Time	10:20 AM
Monitoring Location	Hong Hoi Chee Hong Temple (I-2)
Parameter	Suspended Solid
Action & Limit Levels	7.68 / 8.34
Measured Level	4.0 (higher than 130% of control station's SS)
Possible reason for Action or Limit Level Non-compliance	A low SS level of 2.3 is recorded at Control Station (I-2-C)
Actions taken / to be taken	The measured SS level was below baseline Action / Limit Level and was within the range of baseline SS concentration (1- 8.5mg/L). Site cleaning and tidying, C & D materials excavation and disposal as well as erect and dismantle formwork of skin wall were undertaken during measurement. No direct disturbance was observed from the site. Thus, the exceedance is considered to be contributed by natural variation and no action should be required.
Remarks	Following mitigation measures were provided: (1) exposed surfaces were covered or segregated. (2) sandbags were used to avoid wastewater from site activities directly running down to the river of I-2. (3) sand/silts removal facilities was installed at the location of I-2.

Prepared by: Terence Kong
 Designation: Environmental Team Leader
 Signature: 
 Date: 16-Nov-09

Photographic record for exceedance of Suspended Solid recorded at Hong Hoi Chee Hong Temple (I-2) on 09-Nov-09



Site photo



Photo taken at I-2




Photo taken at I-2-C

Interim Notifications of Environmental Quality Limits Exceedances

Incident Report on Action Level or Limit Level Non-compliance

Project	Tsuen Wan Drainage Tunnel
Date	13-Nov-09
Time	10:16 AM
Monitoring Location	Hong Hoi Chee Hong Temple (I-2)
Parameter	Turbidity
Action & Limit Levels	6.63 / 6.99
Measured Level	8.49
Possible reason for Action or Limit Level Non-compliance	A high turbidity level of 8.79 is recorded at Control Station (I-2-C). There were construction activities of Landslip preventative works for slopes and retaining walls by CEDD at control station. (Refer to the photos below)
Actions taken / to be taken	The measured turbidity level was above baseline Action and Limit Levels as well as the range of baseline turbidity concentration (2.17 - 7.08 NTU). Construction activities, such as site cleaning and tidying and erect and dismantle formwork of skin wall, were undertaken during the measurement and no direct disturbance was observed from the site. Thus, the exceedance is considered to be contributed by the high turbidity level of control station (I-2-C) and no action should be taken as the turbidity result at monitoring station was below the action and limit level of control station.
Remarks	Following mitigation measures were provided: (1) exposed surfaces were covered or segregated. (2) sandbags were used to avoid wastewater from site activities directly running down to the river of I-2. (3) sand/silts removal facilities was installed at the location of I-2.

Prepared by: Terence Kong
 Designation: Environmental Team Leader
 Signature: 
 Date: 16-Nov-09

Photographic record for exceedance of Turbidity recorded at Hong Hoi Chee Hong Temple (I-2) on 13-Nov-09



Site photo



Photo taken at I-2



Photo taken at I-2-C




Construction activities at I-2-C.

Interim Notifications of Environmental Quality Limits Exceedances

Incident Report on Action Level or Limit Level Non-compliance

Project	Tsuen Wan Drainage Tunnel
Date	11-Nov-09
Time	10:27 AM
Monitoring Location	Hong Hoi Chee Hong Temple (I-2)
Parameter	Suspended Solid
Action & Limit Levels	7.68 / 8.34
Measured Level	9.80
Possible reason for Action or Limit Level Non-compliance	A high SS level of 10.7 is recorded at Control Station (I-2-C). There were construction activities of Landslip preventative works for slopes and retaining walls by CEDD at control station. (Refer to the photos below)
Actions taken / to be taken	The measured SS level was above baseline Action and Limit Levels as well as the range of baseline SS concentration (1 -8.5 mg/L). Construction activities, such as Steel Frame Erection and Formwork Erection for skin wall, were undertaken during the measurement and no direct disturbance was observed from the site. Thus, the exceedance is considered to be contributed by the high SS level of control station (I-2-C) and no action should be taken as the SS result at monitoring station was below the action and limit level of control station. .
Remarks	Following mitigation measures were provided: (1) exposed surfaces were covered or segregated. (2) sandbags were used to avoid wastewater from site activities directly running down to the river of I-2. (3) sand/silts removal facilities was installed at the location of I-2.

Prepared by: Terence Kong
 Designation: Environmental Team Leader
 Signature: 
 Date: 17-Nov-09

Photographic record for exceedance of Suspended Solid recorded at Hong Hoi Chee Hong Temple (I-2) on 11-Nov-09



Site photo



Photo taken at I-2



Photo taken at I-2-C




Construction activities at I-2-C.

Interim Notifications of Environmental Quality Limits Exceedances

Incident Report on Action Level or Limit Level Non-compliance

Project	Tsuen Wan Drainage Tunnel
Date	11-Nov-09
Time	11:36 AM
Monitoring Location	Squatters (I-3)
Parameter	Suspended Solid
Action & Limit Levels	6.13 / 7.23
Measured Level	6.60
Possible reason for Action or Limit Level Non-compliance	A high SS level of 7.6 is recorded at Control Station (I-3-C).
Actions taken / to be taken	The measured SS level was above baseline Action Level but below Limit Level, and it was still within the range of baseline SS concentration (1 -7.5 mg/L). Construction activities, such as site cleaning and tidying, soil nailing, formation of access road and C&D materials disposal, were undertaken during the measurement and no direct disturbance was observed from the site. Thus, the exceedance is considered to be contributed by natural variation and no action should be required.
Remarks	Following mitigation measures were provided: (1) Gabion wall has been constructed to avoid any water from rainstorm and from site activities directly running down to the river of I-3. (2) Sedimentation Pond and Sand/silts removal facilities was installed at the location of I-3.

Prepared by: Terence Kong
 Designation: Environmental Team Leader
 Signature: 
 Date: 17-Nov-09

Photographic record for exceedance of Suspended Solid recorded at Squatters (I-3) on 11-Nov-09



Site photo



Photo taken at I-3



Photo taken at I-3-C

Interim Notifications of Environmental Quality Limits Exceedances

Incident Report on Action Level or Limit Level Non-compliance

Project	Tsuen Wan Drainage Tunnel
Date	25-Nov-09
Time	10:37 AM
Monitoring Location	Sik Sik Yuen Ho Fung College (I-1)
Parameter	Turbidity
Action & Limit Levels	9.75 / 12.47
Measured Level	10.80
Possible reason for Action or Limit Level Non-compliance	A high turbidity level of 11.11 is recorded at Control Station (I-1-C). Other construction activities were carried out at control station during the measurement. (Refer to the photos below).
Actions taken / to be taken	The measured turbidity level was above baseline Action Level but below Limit Level. It was within the range of baseline turbidity concentration (3.13 - 13.15 NTU). Construction activities, such as rock breaking, slope stabilization and mucking out, were undertaken during the measurement and no direct disturbance was observed from the site. The exceedance is considered to be contributed by the high turbidity level of control station (I-1-C) and no action should be taken as the turbidity result at monitoring station was below the action and limit level of control station.
Remarks	Following mitigation measures were provided: (1) sandbags were used at the gap of the bridge to avoid wastewater from site activities directly running down to the channel of I-1. (2) The working site was segregated with a wall and no wastewater was observed down to the channel-I1. (3) Sand/silts removal facilities was installed at the location of I-1.

Prepared by: Terence Kong

Designation: Environmental Team Leader

Signature:



Date: 26-Nov-09

Photographic record for exceedance of Turbidity recorded at Sik Sik Yuen Ho Fung College (I-1) on 25-Nov-09



Site photo



Photo taken at I-1

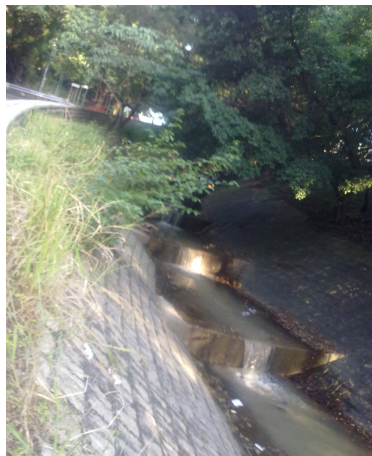


Photo taken at I-1-C




Construction activities at Wo Yi Hop Village near I-1-C

Interim Notifications of Environmental Quality Limits Exceedances

Incident Report on Action Level or Limit Level Non-compliance

Project	Tsuen Wan Drainage Tunnel
Date	23-Nov-09
Time	10:12 AM
Monitoring Location	Hong Hoi Chee Hong Temple (I-2)
Parameter	Suspended Solid
Action & Limit Levels	7.68 / 8.34
Measured Level	3.0 (higher than 130% of control station's SS)
Possible reason for Action or Limit Level Non-compliance	A low SS level of 2.0 is recorded at Control Station (I-2-C)
Actions taken / to be taken	The measured SS level was below baseline Action / Limit Level and was within the range of baseline SS concentration (1- 8.5mg/L). Site cleaning and tidying, erect formwork for skin wall and formation of man access shaft were undertaken during measurement. No direct disturbance was observed from the site. Thus, the exceedance is considered to be contributed by natural variation and no action should be required.
Remarks	Following mitigation measures were provided: (1) exposed surfaces were covered or segregated. (2) sandbags were used to avoid wastewater from site activities directly running down to the river of I-2. (3) sand/silts removal facilities was installed at the location of I-2.

Prepared by: Terence Kong
 Designation: Environmental Team Leader
 Signature: 
 Date: 30-Nov-09

Photographic record for exceedance of Suspended Solid recorded at Hong Hoi Chee Hong Temple (I-2) on 23-Nov-09



Site photo



Photo taken at I-2



Photo taken at I-2-C

Interim Notifications of Environmental Quality Limits Exceedances

Incident Report on Action Level or Limit Level Non-compliance

Project	Tsuen Wan Drainage Tunnel
Date	25-Nov-09
Time	10:37 AM
Monitoring Location	Sik Sik Yuen Ho Fung College (I-1)
Parameter	Suspended Solid
Action & Limit Levels	8.85 / 10.17
Measured Level	11.3
Possible reason for Action or Limit Level Non-compliance	A highSS level of 11.1 is recorded at Control Station (I-1-C). Other construction activities were carried out at control station during the measurement. (Refer to the photos below).
Actions taken / to be taken	The measured SS level was above baseline Action and Limit Levels as well as the range of baseline SS concentration (1 - 10.5 mg/L). Construction activities, such as rock breaking, slope stabilization and mucking out, were undertaken during the measurement and no direct disturbance was observed from the site. The exceedance is considered to be contributed by the high SS level of control station (I-1-C) and no action should be taken as the SS result at monitoring station was below the action and limit level of control station.
Remarks	Following mitigation measures were provided: (1) sandbags were used at the gap of the bridge to avoid wastewater from site activities directly running down to the channel of I-1. (2) The working site was segregated with a wall and no wastewater was observed down to the channel-I1. (3) Sand/silts removal facilities was installed at the location of I-1.

Prepared by: Terence Kong

Designation: Environmental Team Leader

Signature:



Date: 02-Dec-09

Photographic record for exceedance of Suspended Solid recorded at Sik Sik Yuen Ho Fung College (I-1) on 25-Nov-09



Site photo



Photo taken at I-1

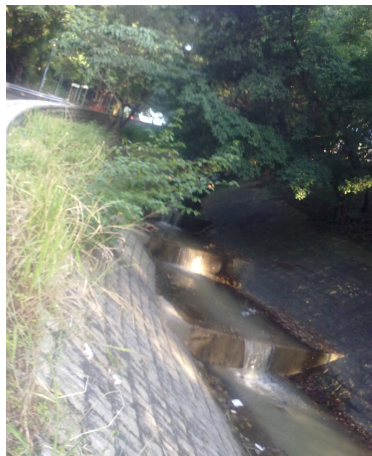
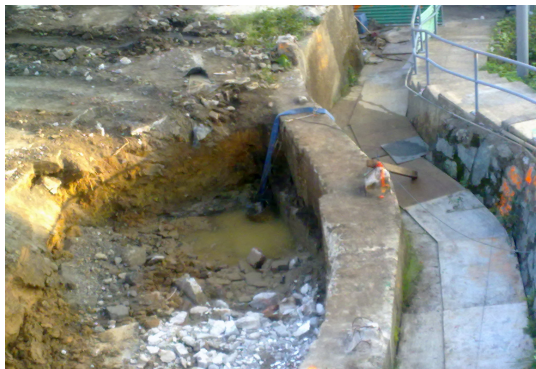


Photo taken at I-1-C



Construction activities at Wo Yi Hop Village near I-1-C

Interim Notifications of Environmental Quality Limits Exceedances

Incident Report on Action Level or Limit Level Non-compliance

Project	Tsuen Wan Drainage Tunnel
Date	27-Nov-09
Time	10:29 AM
Monitoring Location	Sik Sik Yuen Ho Fung College (I-1)
Parameter	Suspended Solid
Action & Limit Levels	8.85 / 10.17
Measured Level	12.6
Possible reason for Action or Limit Level Non-compliance	A high SS level of 11.7 is recorded at Control Station (I-1-C). Other construction activities were carried out at control station during the measurement. (Refer to the photos below).
Actions taken / to be taken	The measured SS level was above baseline Action and Limit Levels as well as the range of baseline SS concentration (1-10.5 mg/L). Construction activities, such as site cleaning and tidying, disposal of C&D materials, excavation and break up of rock, and shotcrete of shaft wall and rock face, were undertaken during the measurement and no direct disturbance was observed from the site. The exceedance is considered to be contributed by the high SS level of control station (I-1-C) and no action should be taken as the SS result at monitoring station was below the action and limit level of control station.
Remarks	Following mitigation measures were provided: (1) sandbags were used at the gap of the bridge to avoid wastewater from site activities directly running down to the channel of I-1. (2) The working site was segregated with a wall and no wastewater was observed down to the channel-I1. (3) Sand/silts removal facilities was installed at the location of I-1.

Prepared by: Terence Kong
 Designation: Environmental Team Leader

Signature:



Date: 02-Dec-09

Photographic record for exceedance of Suspended Solid recorded at Sik Sik Yuen Ho Fung College (I-1) on 27-Nov-09



Site photo



Photo taken at I-1



Photo taken at I-1-C



Construction activities at Wo Yi Hop Village near I-1-C

Interim Notifications of Environmental Quality Limits Exceedances

Incident Report on Action Level or Limit Level Non-compliance

Project	Tsuen Wan Drainage Tunnel
Date	30-Nov-09
Time	10:22 AM
Monitoring Location	Sik Sik Yuen Ho Fung College (I-1)
Parameter	Suspended Solid
Action & Limit Levels	8.85 / 10.17
Measured Level	16.3
Possible reason for Action or Limit Level Non-compliance	A high SS level of 18.8 is recorded at Control Station (I-1-C). Other construction activities were carried out at control station during the measurement. (Refer to the photos below).
Actions taken / to be taken	The measured SS level was above baseline Action and Limit Levels as well as the range of baseline SS concentration (1-10.5 mg/L). Construction activities, such as site cleaning and tidying, disposal of C&D materials, rock breaking and cement grouting, were undertaken during the measurement and no direct disturbance was observed from the site. The exceedance is considered to be contributed by the high SS level of control station (I-1-C) and no action should be taken as the SS result at monitoring station was below the action and limit level of control station.
Remarks	Following mitigation measures were provided: (1) sandbags were used at the gap of the bridge to avoid wastewater from site activities directly running down to the channel of I-1. (2) The working site was segregated with a wall and no wastewater was observed down to the channel-I1. (3) Sand/silts removal facilities was installed at the location of I-1.

Prepared by: Terence Kong
 Designation: Environmental Team Leader

Signature: 

Date: 04-Dec-09

Photographic record for exceedance of Suspended Solid recorded at Sik Sik Yuen Ho Fung College (I-1) on 30-Nov-09



Site photo

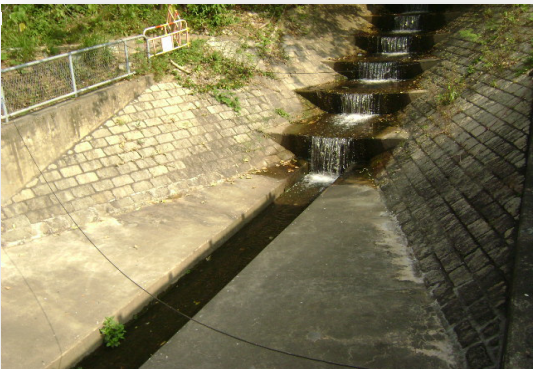


Photo taken at I-1



Photo taken at I-1-C




Construction activities at Wo Yi Hop Village near I-1-C

Interim Notifications of Environmental Quality Limits Exceedances

Incident Report on Action Level or Limit Level Non-compliance

Project	Tsuen Wan Drainage Tunnel
Date	30-Nov-09
Time	9:10 AM
Monitoring Location	Squatters (I-3)
Parameter	Suspended Solid
Action & Limit Levels	6.13 / 7.23
Measured Level	2.7 (higher than 130% of control station's SS)
Possible reason for Action or Limit Level Non-compliance	A low SS level of 2.0 is recorded at Control Station (I-3-C)
Actions taken / to be taken	The measured SS level was below baseline Action and Limit Levels, and it was still within the range of baseline SS concentration (1 -7.5 mg/L). Construction activities, such as site cleaning and tidying, soil nailing, boulder breaking, formation of access road and C&D materials disposal, were undertaken during the measurement and no direct disturbance was observed from the site. Thus, the exceedance is considered to be contributed by natural variation and no action should be required.
Remarks	Following mitigation measures were provided: (1) Gabion wall has been constructed to avoid any water from rainstorm and from site activities directly running down to the river of I-3. (2) Sedimentation Pond and Sand/silts removal facilities was installed at the location of I-3.

Prepared by: Terence Kong
 Designation: Environmental Team Leader
 Signature: 
 Date: 04-Dec-09

Photographic record for exceedance of Suspended Solid recorded at Squatters (I-3) on 30-Nov-09



Site photo



Photo taken at I-3



Photo taken at I-3-C

Interim Notifications of Environmental Quality Limits Exceedances

Incident Report on Action Level or Limit Level Non-compliance

Project	Tsuen Wan Drainage Tunnel
Date	9-Nov-09
Time	N/A
Monitoring Location	Roof top of Greenview Terrace facing to the construction site (NSR 9)
Parameter	Noise
Action & Limit Levels	When one documented complaint is received / 75 dB(A)
Measured Level	N/A
Possible reason for Action or Limit Level Non-compliance	Movable noise barrier was not placed close enough to the piling machine.
Actions taken / to be taken	The rig was re-orientated and the barrier was placed closed to the drilling head immediately. The documented complaint for noise is considered to trigger the action level.
Remarks	Please refer to Appendix K for details.

Prepared by: Terence Kong
Designation: Environmental Team Leader

Signature: 

Date: 7-Dec-09

Interim Notifications of Environmental Quality Limits Exceedances

Incident Report on Action Level or Limit Level Non-compliance

Project	Tsuen Wan Drainage Tunnel
Date	18-Nov-09
Time	N/A
Monitoring Location	Roof top of Greenview Terrace facing to the construction site (NSR 9)
Parameter	Noise
Action & Limit Levels	When one documented complaint is received / 75 dB(A)
Measured Level	N/A
Possible reason for Action or Limit Level Non-compliance	Rock-breaking activity carried out in the eastern area of Portion D, closest to Greenview Terrace, was not totally screened and line of sight of the breaker was observed from the NSR.
Actions taken / to be taken	The bamboo scaffold was extended further away from stage 3 scaffold to further screen off the activities to the Greenview. The length of the extension was about 8 to 10 m. A strong reminder was given to the relevant staff and sub-contractor and the barrier should be placed in the right orientation before breaking. The mitigation measures were strictly followed as stated in the proposal. The documented complaint for noise is considered to trigger the action level.
Remarks	Please refer to Appendix K for details.

Prepared by: Terence Kong
Designation: Environmental Team Leader

Signature:



Date: 7-Dec-09