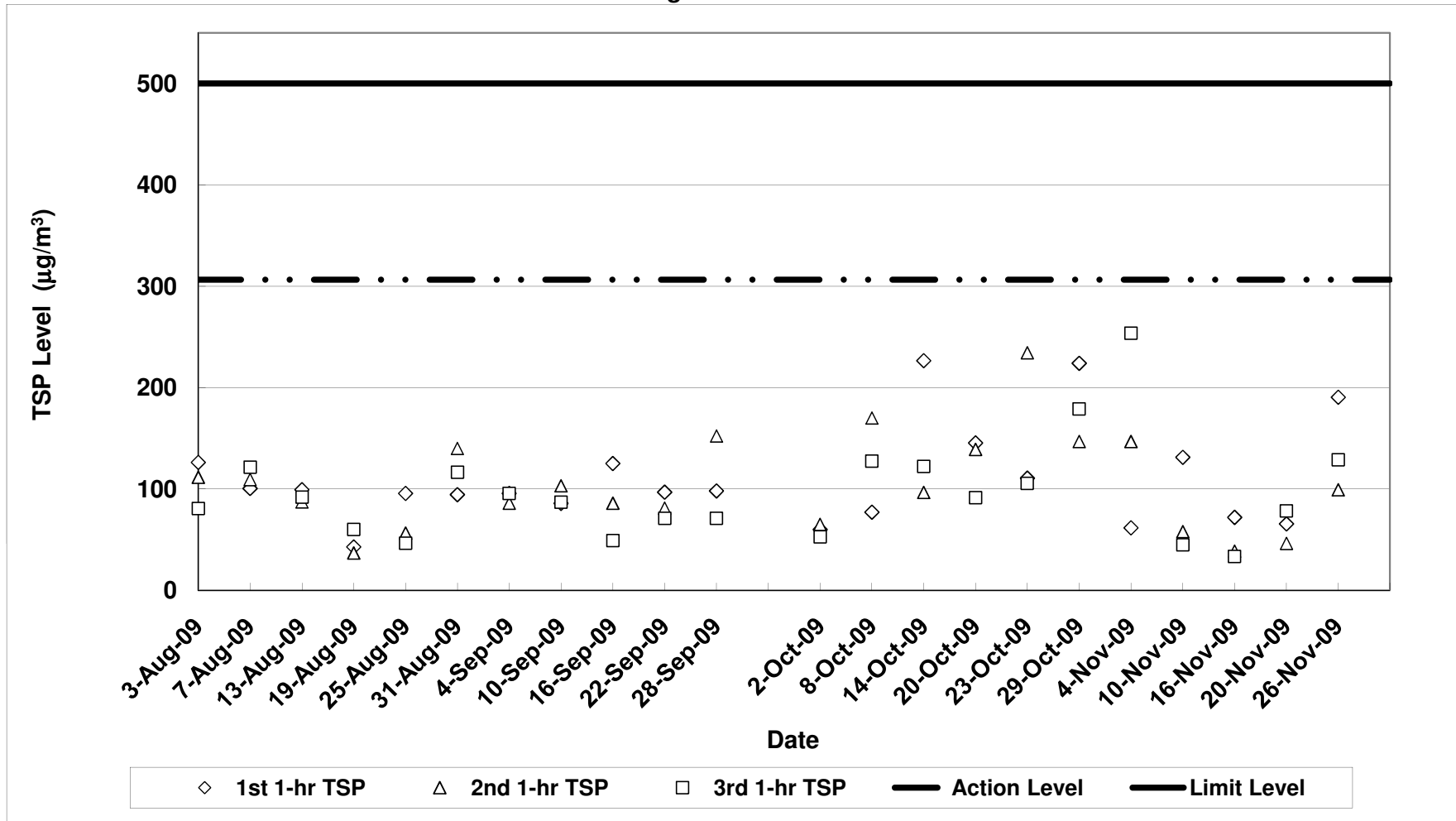


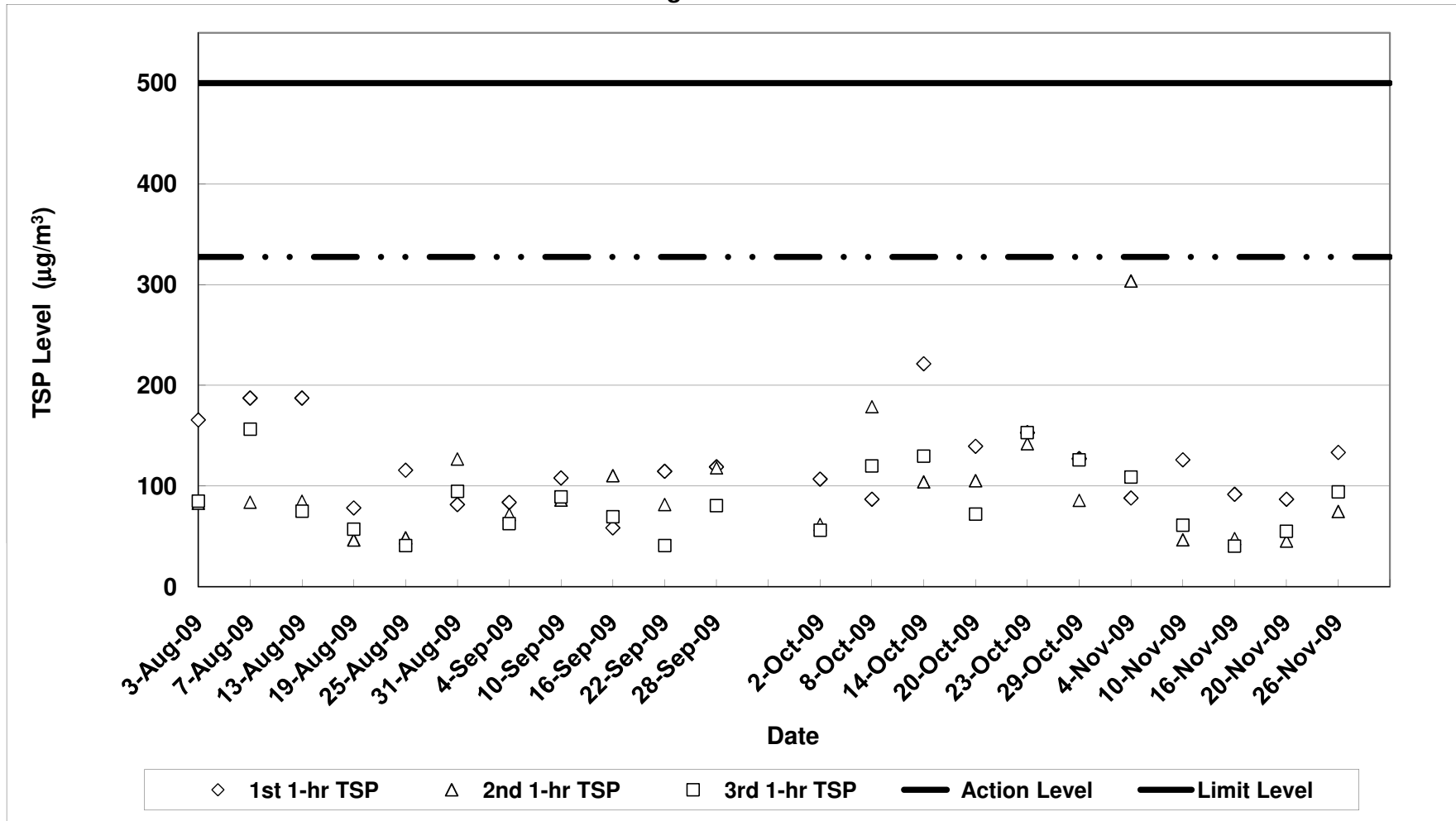
Air Quality Impact Monitoring Results (1-Hour TSP)

Location	Monitoring Date	Weather Conditions	Wind Speed with Direction (m/s)	Temp (°C)	Timer-I	Timer-F	Time (mins)	Flow-I (CFM)	Flow-F (CFM)	Flow-I (m³/min)	Flow-F (m³/min)	Flow-avg (m³/min)	Volume (m³)	Weight-I (g)	Weight-F (g)	Weight-diff. (g)	1-hr TSP (µg/m³)	Average 1-Hr TSP (µg/m³)	Action/Limit Levels (µg/m³)	Observation / Site Condition	Remark
Sik Sik Yuen Ho Fung College - Intake (ASR1)	04-Nov-09	Sunny	0.5N	25	583642	583742	60.0	40	40	1.29	1.29	1.29	77.66	2.8853	2.8901	0.0048	61.8	154.1	306.6/500	Breaking by backhoe,excavation work	Traffic. Construction works carry out and water spraying is provided. The weather is sunny and dry.
		Sunny	0.5N	25	583742	583842	60.0	40	40	1.29	1.29	1.29	77.66	2.8463	2.8577	0.0114	146.8				
		Sunny	0.5N	25	583842	583942	60.0	40	40	1.29	1.29	1.29	77.66	2.8451	2.8648	0.0197	253.7				
	10-Nov-09	Sunny	0.3N	24	583942	584042	60.0	40	40	1.29	1.29	1.29	77.66	2.8392	2.8494	0.0102	131.3	78.1	306.6/500	Breaking by backhoe,excavation work	Traffic
		Sunny	0.3N	24	584042	584142	60.0	40	40	1.29	1.29	1.29	77.66	2.8357	2.8402	0.0045	57.9				
		Sunny	0.3N	24	584142	584242	60.0	40	40	1.29	1.29	1.29	77.66	2.8229	2.8335	0.0035	45.1				
	16-Nov-09	Cloudy	1.0N	25	584242	584342	60.0	40	40	1.29	1.29	1.29	77.66	2.8638	2.8694	0.0056	72.1	48.1	306.6/500	Breaking by backhoe,excavation work	Traffic
		Cloudy	1.0N	25	584342	584442	60.0	40	40	1.29	1.29	1.29	77.66	2.8774	2.8804	0.0030	38.6				
		Cloudy	1.0N	25	584442	584542	60.0	40	40	1.29	1.29	1.29	77.66	2.8481	2.8507	0.0026	33.5				
	20-Nov-09	Sunny	0.8N	22	584542	584642	60.0	40	40	1.29	1.29	1.29	77.66	2.8562	2.8613	0.0051	65.7	63.5	306.6/500	Breaking by backhoe,excavation work	Traffic
		Sunny	0.8N	22	584642	584742	60.0	40	40	1.29	1.29	1.29	77.66	2.8817	2.8853	0.0036	46.4				
		Sunny	0.8N	22	584742	584842	60.0	40	40	1.29	1.29	1.29	77.66	2.8752	2.8813	0.0061	78.5				
26-Nov-09	Sunny	0.3N	21	584842	584942	60.0	40	40	1.29	1.29	1.29	77.66	2.8253	2.8381	0.0148	190.5	139.5	306.6/500	Breaking by backhoe,excavation work	Traffic	
	Sunny	0.3N	21	584942	585042	60.0	40	40	1.29	1.29	1.29	77.66	2.8240	2.8317	0.0077	99.1					
	Sunny	0.3N	21	585042	585142	60.0	40	40	1.29	1.29	1.29	77.66	2.7908	2.8008	0.0100	128.8					
-	-	-	-	-	-	-	-	-	-	-	-	-	-	-	-	-	-	-	-	-	-
Hong Hai Chee Hong Temple - Intake (ASR3)	04-Nov-09	Sunny	0.3N	25	552190	552290	60.0	40	40	1.36	1.36	1.36	81.72	2.8459	2.8531	0.0072	88.1	166.8	327.4/500	Excavation work	Traffic. Construction works carry out and water spraying is provided. The weather is sunny and dry.
		Sunny	0.3N	25	552290	552390	60.0	40	40	1.36	1.36	1.36	81.72	2.8638	2.8886	0.0248	303.5				
		Sunny	0.3N	25	552390	552490	60.0	40	40	1.36	1.36	1.36	81.72	2.8831	2.8920	0.0089	108.9				
	10-Nov-09	Sunny	0.3N	24	552490	552590	60.0	40	40	1.36	1.36	1.36	81.72	2.8794	2.8897	0.0103	126.0	77.9	327.4/500	Excavation work	Traffic
		Sunny	0.3N	24	552590	552690	60.0	40	40	1.36	1.36	1.36	81.72	2.8956	2.8994	0.0038	46.5				
		Sunny	0.3N	24	552690	552790	60.0	40	40	1.36	1.36	1.36	81.72	2.8786	2.8816	0.0050	61.2				
	16-Nov-09	Cloudy	0.8N	25	552790	552890	60.0	40	40	1.36	1.36	1.36	81.72	2.8901	2.8976	0.0075	91.8	60.0	327.4/500	Nil	Traffic
		Cloudy	0.8N	25	552890	552990	60.0	40	40	1.36	1.36	1.36	81.72	2.8383	2.8422	0.0039	47.7				
		Cloudy	0.8N	25	552990	553090	60.0	40	40	1.36	1.36	1.36	81.72	2.8801	2.8834	0.0033	40.4				
	20-Nov-09	Sunny	0.5N	22	553090	553190	60.0	40	40	1.36	1.36	1.36	81.72	2.8875	2.8946	0.0071	86.9	62.4	327.4/500	Nil	Traffic
		Sunny	0.5N	22	553190	553290	60.0	40	40	1.36	1.36	1.36	81.72	2.8248	2.8285	0.0037	45.3				
		Sunny	0.5N	22	553290	553390	60.0	40	40	1.36	1.36	1.36	81.72	2.8514	2.8559	0.0045	55.1				
26-Nov-09	Sunny	0.3N	21	553390	553490	60.0	40	40	1.36	1.36	1.36	81.72	2.8120	2.8229	0.0109	133.4	100.8	327.4/500	Nil	Traffic	
	Sunny	0.3N	21	553490	553590	60.0	40	40	1.36	1.36	1.36	81.72	2.8310	2.8371	0.0061	74.6					
	Sunny	0.3N	21	553590	553690	60.0	40	40	1.36	1.36	1.36	81.72	2.8001	2.8078	0.0077	94.2					
-	-	-	-	-	-	-	-	-	-	-	-	-	-	-	-	-	-	-	-	-	-
Long Beach Gardens - Outfall (ASR8)	04-Nov-09	Sunny	0.5N	25	607180	607280	60.0	40	40	1.29	1.29	1.29	77.48	2.8891	2.9022	0.0131	169.1	159.2	336.6/500	Breaking by backhoe,excavation work	Traffic
		Sunny	0.5N	25	607280	607380	60.0	40	40	1.29	1.29	1.29	77.48	2.8592	2.8746	0.0154	198.8				
		Sunny	0.5N	25	607380	607480	60.0	40	40	1.29	1.29	1.29	77.48	2.8580	2.8665	0.0085	109.7				
	10-Nov-09	Sunny	0.8N	24	607480	607580	60.0	40	40	1.29	1.29	1.29	77.48	2.8590	2.8700	0.0110	142.0	68.8	336.6/500	Breaking by backhoe,excavation work	Traffic
		Sunny	0.8N	24	607580	607680	60.0	40	40	1.29	1.29	1.29	77.48	2.8802	2.8821	0.0019	24.5				
		Sunny	0.8N	24	607680	607780	60.0	40	40	1.29	1.29	1.29	77.48	2.8810	2.8841	0.0031	40.0				
	16-Nov-09	Cloudy	1.0N	25	607780	607880	60.0	40	40	1.29	1.29	1.29	77.48	2.8658	2.8732	0.0074	95.5	51.2	336.6/500	Breaking by backhoe,excavation work	Traffic
		Cloudy	1.0N	25	607880	607980	60.0	40	40	1.29	1.29	1.29	77.48	2.8180	2.8302	0.0022	28.4				
		Cloudy	1.0N	25	607980	608080	60.0	40	40	1.29	1.29	1.29	77.48	2.8748	2.8771	0.0023	27.7				
	20-Nov-09	Sunny	1.3N	22	608080	608180	60.0	40	40	1.29	1.29	1.29	77.48	2.8142	2.8229	0.0087	112.3	116.2	336.6/500	Breaking by backhoe,excavation work	Traffic
		Sunny	1.3N	22	608180	608280	60.0	40	40	1.29	1.29	1.29	77.48	2.9170	2.9262	0.0092	118.7				
		Sunny	1.3N	22	608280	608380	60.0	40	40	1.29	1.29	1.29	77.48	2.8718	2.8809	0.0091	117.5				
26-Nov-09	Sunny	0.5N	21	608380	608480	60.0	40	40	1.29	1.29	1.29	77.48	2.8410	2.8581	0.0171	220.7	248.7	336.6/500	Breaking by backhoe,excavation work	The high TSP levels during the monitoring period were due to the car parking nearby.	
	Sunny	0.5N	21	608480	608580	60.0	40	40	1.29	1.29	1.29	77.48	2.8611	2.8858	0.0247	318.8					
	Sunny	0.5N	21	608580	608680	60.0	40	40	1.29	1.29	1.29	77.48	2.8695	2.8855	0.0160	206.5					
-	-	-	-	-	-	-	-	-	-	-	-	-	-	-	-	-	-	-	-	-	-
Greenview Terrace - Outfall (ASR9)	04-Nov-09	Sunny	0.5N	25	539080	539180	60.0	40	40	1.22	1.22	1.22	73.45	2.8878	2.9002	0.0124	168.8	185.6	329.2/500	Breaking by backhoe,excavation work	Traffic. Construction works carry out and water spraying is provided. The weather is sunny and dry.
		Sunny	0.5N	25	539180	539280	60.0	40	40	1.22	1.22	1.22	73.45	2.8662	2.8981	0.0219	298.2				
		Sunny	0.5N	25	539280	539380	60.0	40	40	1.22	1.22	1.22	73.45	2.8657	2.8723	0.0066	89.9				
	10-Nov-09	Sunny	0.8N	24	539380	539480	60.0	40	40	1.22	1.22	1.22	73.45	2.8475	2.8563	0.0078	106.2	62.2	329.2/500	Breaking by backhoe,excavation work	Traffic
		Sunny	0.8N	24	539480	539580	60.0	40	40	1.22	1.22	1.22	73.45	2.8525	2.8562	0.0037	50.4				
		Sunny	0.8N	24	539580	539680	60.0	40	40	1.22	1.22	1.22	73.45	2.8582	2.8604	0.0022	30.0				
	16-Nov-09	Cloudy	1.0N	23	539680	539780	60.0	40	40	1.22	1.22	1.22	73.45	2.8530	2.8612	0.0082	111.6	56.3	329.2/500	Breaking by backhoe,excavation work	Traffic
		Cloudy	1.0N	23	539780	539880	60.0	40	40	1.22	1.22	1.22	73.45	2.8596	2.8628	0.0032	43.6				
		Cloudy	1.0N	23	539880	539980	60.0	40	40	1.22	1.22	1.22	73.45	2.8518	2.8538	0.0010	13.6				
	20-Nov-09	Sunny	1.5N	22	539980	540080	60.0	40	40	1.22	1.22	1.22	73.45	2.8672	2.8746	0.0074	100.8	80.3	329.2/500	Breaking by backhoe,excavation work	Traffic
		Sunny	1.5N	22	540080	540180	60.0	40	40	1.22	1.22	1.22	73.45	2.8701	2.8742	0.0041	55.8				
		Sunny	1.5N	22	540180	540280	60.0	40	40	1.22	1.22	1.22	73.45	2.8680	2.8742	0.0062	84.4				
26-Nov-09	Sunny	0.3N	21	540280	540380	60.0	40	40	1.22	1.22	1.22	73.45	2.7976	2.8005	0.0029	39.5	50.4	329.2/500	Breaking by backhoe,excavation work	Traffic	
	Sunny	0.3N	21	540380	540480	60.0	40	40	1.22	1.22	1.22	73.45									

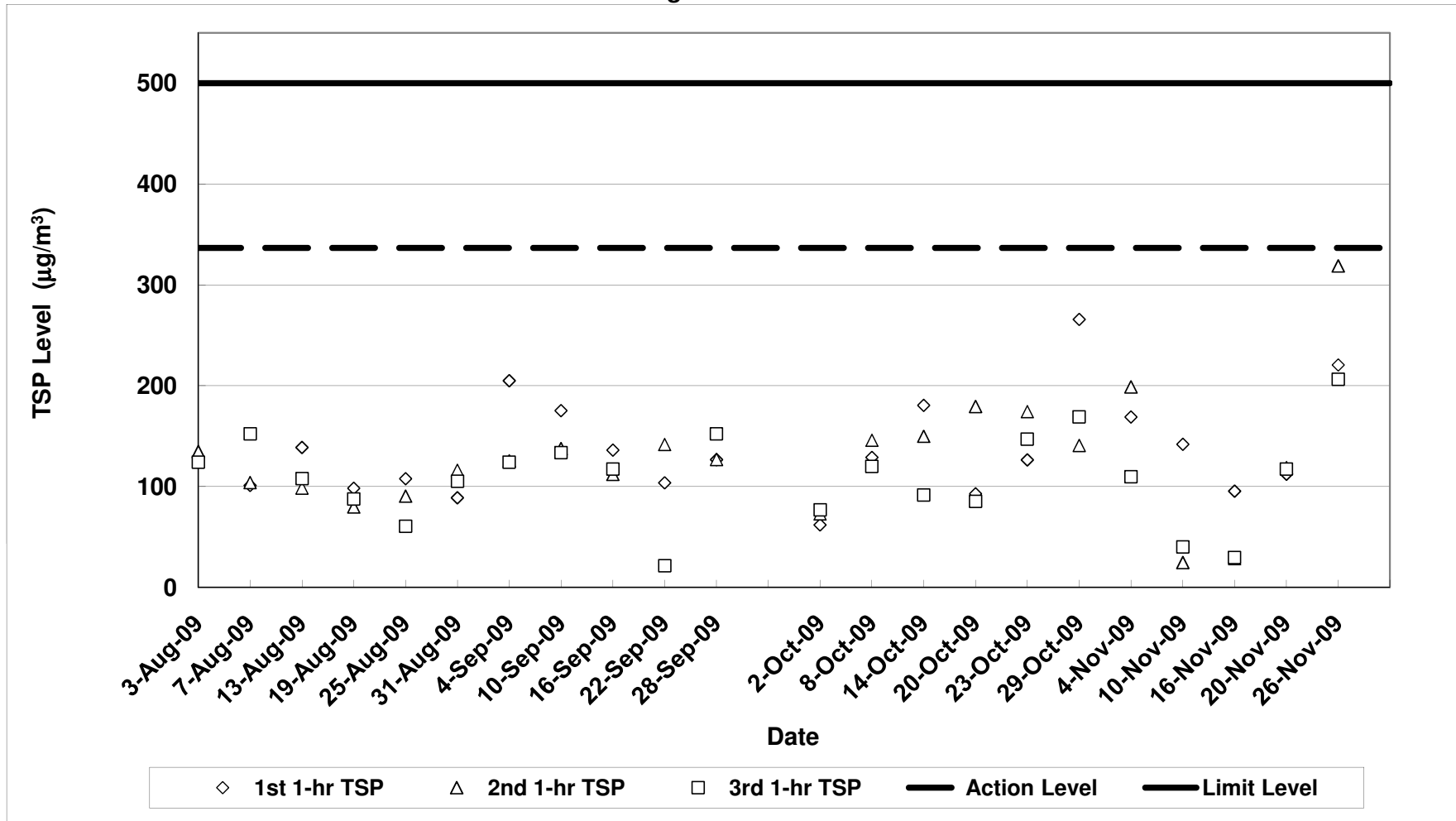
**Contract No. DC/2007/12 - Design and Construction of Tsuen Wan Drainage Tunnel
 Air Quality Monitoring (1-hr TSP) Results at Sik Sik Yuen Ho Fung College - Intake (ASR1)
 Aug-09 to Nov-09**



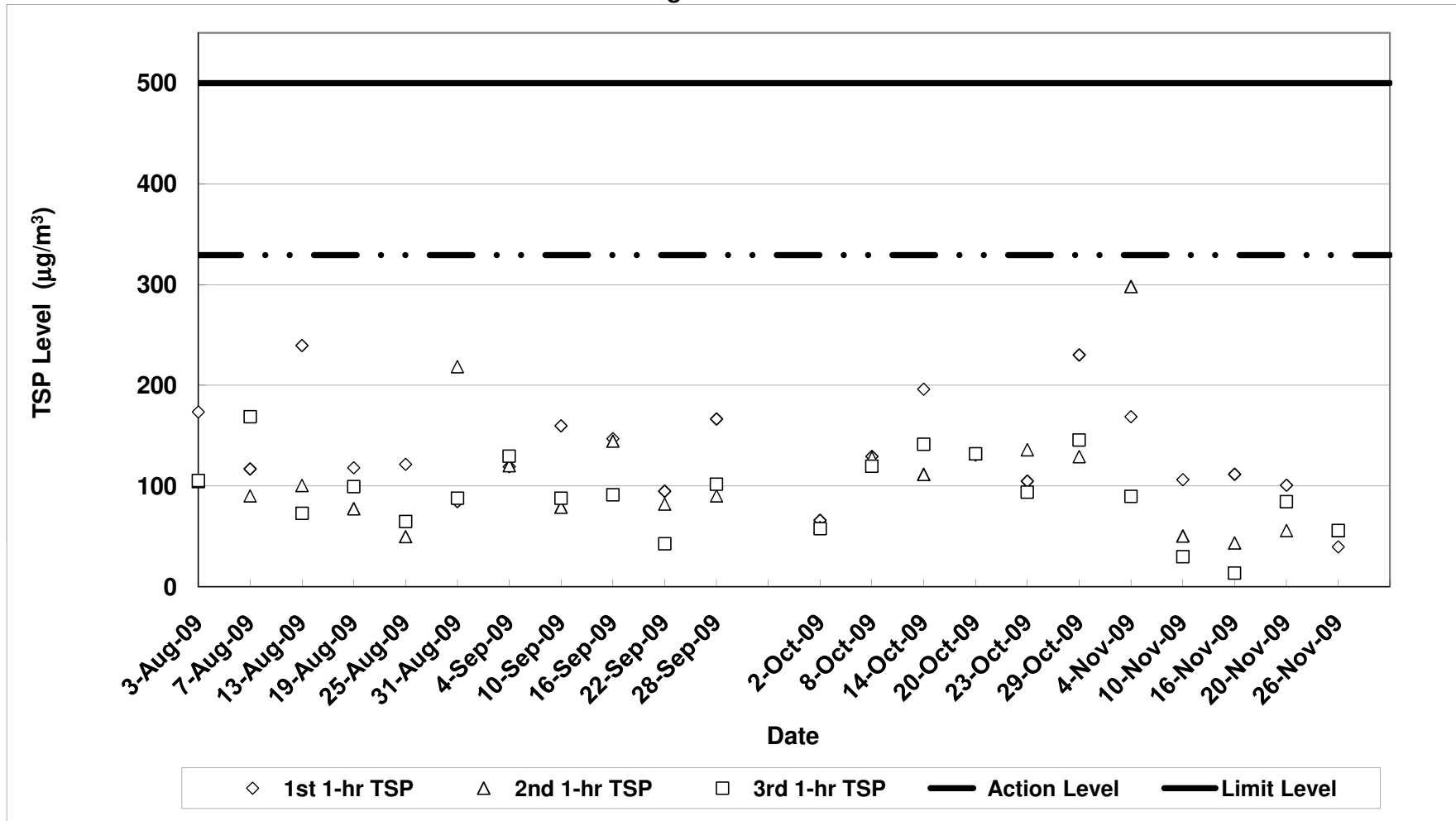
**Contract No. DC/2007/12 - Design and Construction of Tsuen Wan Drainage Tunnel
 Air Quality Monitoring (1-hr TSP) Results at Hong Hoi Chee Hong Temple - Intake (ASR3)
 Aug-09 to Nov-09**



**Contract No. DC/2007/12 - Design and Construction of Tsuen Wan Drainage Tunnel
 Air Quality Monitoring (1-hr TSP) Results at Long Beach Gardens - Outfall (ASR8)
 Aug-09 to Nov-09**



**Contract No. DC/2007/12 - Design and Construction of Tsuen Wan Drainage Tunnel
Air Quality Monitoring (1-hr TSP) Results at Greenview Terrance - Outfall (ASR9)
Aug-09 to Nov-09**



Contract No. DC/2007/12 - Design and Construction of Tsuen Wan Drainage Tunnel

Noise Impact Monitoring Results

Monitoring Locations	Date	Weather Conditions	Temperature (°C)	Wind Speed (m/s)	Wind Direction	Start Time	End Time	BL ¹	LL ²	L _{eq} (30min)	L ₁₀ (30min)	L ₉₀ (30min)	CNL ³	Observation / Site Condition	Remark
								dB(A)	dB(A)	dB(A)	dB(A)	dB(A)	dB(A)		
Sik Sik Yuen Ho Fung College NSR 1	04-Nov-09	Sunny	25	0.3	N	15:26	15:56	66.1	70	66.8	69.7	62.6	-	Breaking by backhoe,excavation work	Traffic noise
	10-Nov-09	Sunny	24	0.3	N	15:00	15:30		70	68.5	70.0	65.9	-	Breaking by backhoe,excavation work	Traffic noise
	16-Nov-09	Cloudy	22	1.0	N	15:52	16:22		70	69.8	71.6	66.4	-	Breaking by backhoe,excavation work	Traffic noise
	26-Nov-09	Sunny	21	0.3	N	14:41	15:11		70	66.4	68.3	63.9	-	Breaking by backhoe,excavation work	Traffic noise
	-	-	-	-	-	-	-		-	-	-	-	-	-	-
Hong Hoi Chee Hong Temple NSR 3	04-Nov-09	Sunny	25	0.3	N	14:35	15:05	57.9	75	66.8	69.8	61.6	-	Excavation work	Traffic noise
	10-Nov-09	Sunny	24	0.3	N	14:18	14:48		75	72.1	74.8	68.1	-	Breaking by backhoe	Traffic noise, aircraft noise
	16-Nov-09	Cloudy	22	0.8	N	15:10	15:40		75	68.0	70.7	64.8	-	Breaking by backhoe_cutting	Traffic noise
	26-Nov-09	Sunny	21	0.3	N	14:00	14:30		75	66.0	67.6	64.2	-	Excavation work	Traffic noise
	-	-	-	-	-	-	-		-	-	-	-	-	-	-
Squatters NSR 6	04-Nov-09	Sunny	25	0.3	N	13:30	14:00	61.2	75	65.7	69.3	54.4	-	Excavation work	Bird noise
	10-Nov-09	Sunny	24	0.8	N	13:30	14:00		75	64.6	68.1	60.0	-	Excavation work, soil Nail	Aircraft noise
	16-Nov-09	Cloudy	22	1.0	N	11:02	11:32		75	53.9	55.8	49.6	-	Excavation Work	Aircraft noise
	26-Nov-09	Sunny	21	0.5	N	13:05	13:35		75	56.3	59.8	50.2	-	Excavation Work	Aircraft noise
	-	-	-	-	-	-	-		-	-	-	-	-	-	-
Long Beach Gardens NSR 8	04-Nov-09	Sunny	25	0.5	N	16:10	16:40		75	63.3	65.3	60.9	-	Drilling work, breaking by backhoe	Traffic noise
	10-Nov-09	Sunny	24	0.8	N	10:55	11:25		75	62.1	64.4	59.9	-	Drilling work, breaking by backhoe	Traffic noise, aircraft noise
	16-Nov-09	Cloudy	22	1.2	N	14:30	15:00		75	69.0	71.9	63.8	-	Drilling work, breaking by backhoe	Traffic noise
	26-Nov-09	Sunny	21	0.5	N	10:18	10:48		75	72.0	75.7	63.5	-	Breaking by backhoe,excavation work	Traffic noise, aircraft noise
	-	-	-	-	-	-	-		-	-	-	-	-	-	-
Greenview Terrace NSR9	02-Nov-09*	Sunny	27	1.1	E	09:41	10:11		75	65.4	66.8	62.3	-	Excavation work (excavators X 2)	Traffic noise
	04-Nov-09	Sunny	25	0.5	E	11:40	12:10		75	68.8	71.2	65.8	-	Excavation work, drilling	Traffic noise
	06-Nov-09*	Sunny	26	0.6	N	14:50	15:20		75	65.2	66.8	62.1	-	Excavation work (excavator X 1)	Traffic noise
	09-Nov-09*	Sunny	24	0.6	E	17:15	17:45		75	72.0	75.8	65.3	-	Drilling work (driller x 1), Excavation work (excavator x 1), Breaking by backhoe (breakers x 2), air compressors x 2	Traffic noise, aircraft noise, decoration at 14/F
	10-Nov-09	Sunny	24	0.8	N	10:10	10:40		75	72.2	73.6	69.4	-	Drilling work, breaking by backhoe	Traffic noise, aircraft noise
	10-Nov-09*	Sunny	24	0.8	N	16:15	16:45		75	71.4	76.1	67.0	-	Excavation work (excavators x 2), breaking by backhoe (breakers x 2), Soil nailing	Traffic noise, aircraft noise, decoration at 14/F
	10-Nov-09*	Sunny	24	0.8	N	16:45	17:15		75	71.0	72.9	67.2	-	Excavation work (excavators x 2), breaking by backhoe (breakers x 2), Soil nailing	Traffic noise, aircraft noise, decoration at 14/F
	10-Nov-09*	Sunny	24	0.8	N	17:15	17:45		75	71.6	74.9	70.6	-	Excavation work (excavators x 2), breaking by backhoe (breakers x 2), air compressors x 2, drilling work (drillers x 2)	Traffic noise, aircraft noise, decoration at 14/F
	11-Nov-09*	Sunny	24	0.7	N	15:42	16:12		75	70.8	72.6	68.5	-	Excavation work (excavator x 1), breaking by backhoe (breakers x 2), Portal work, Drilling work (driller x 1), air compressors x 2	Traffic noise, aircraft noise
	11-Nov-09*	Sunny	24	0.7	N	16:18	16:48		75	71.1	72.6	69.0	-	Excavation work (excavator x 1), breaking by backhoe (breakers x 2), Portal work, Drilling work (driller x 1), air compressors x 2	Traffic noise, aircraft noise
	11-Nov-09*	Sunny	24	0.7	N	16:50	17:20		75	71.2	73.0	69.3	-	Excavation work (excavator x 1), breaking by backhoe (breakers x 2), Portal work, Drilling work (driller x 1), air compressors x 2	Traffic noise, aircraft noise
	16-Nov-09	Cloudy	22	1.5	N	13:50	14:20		75	70.9	73.2	66.9	-	Drilling work, breaking by backhoe	Traffic noise
	18-Nov-09*	Cloudy	22	1.2	N	15:45	16:15		75	71.8	73.9	69.0	-	Breaking by backhoe (breakers x 2), Excavation work (excavator x 1), Soil nailing	Traffic noise
	20-Nov-09*	Sunny	25	1.3	N	15:15	15:45		75	69.5	71.4	65.3	-	Breaking by backhoe (breaker x 1), Excavation work (excavators x 2)	Traffic noise, aircraft noise
	26-Nov-09	Sunny	24	0.5	N	11:45	12:15		75	73.0	75.9	65.1	-	Breaking by backhoe,excavation work	Traffic noise, aircraft noise
27-Nov-09*	Sunny	23	0.7	E	11:45	12:15	75	71.3	74.2	66.2	-	Breaking by backhoe (breaker x 1)	Traffic noise, aircraft noise		
27-Nov-09*	Sunny	23	0.7	E	12:15	12:45	75	72.3	75.0	66.0	-	Breaking by backhoe (breaker x 1)	Traffic noise, aircraft noise		
27-Nov-09*	Sunny	23	0.7	E	12:45	13:15	75	72.7	76.1	64.8	-	Breaking by backhoe (breaker x 1), Excavation work (excavator x 1)	Traffic noise, aircraft noise		

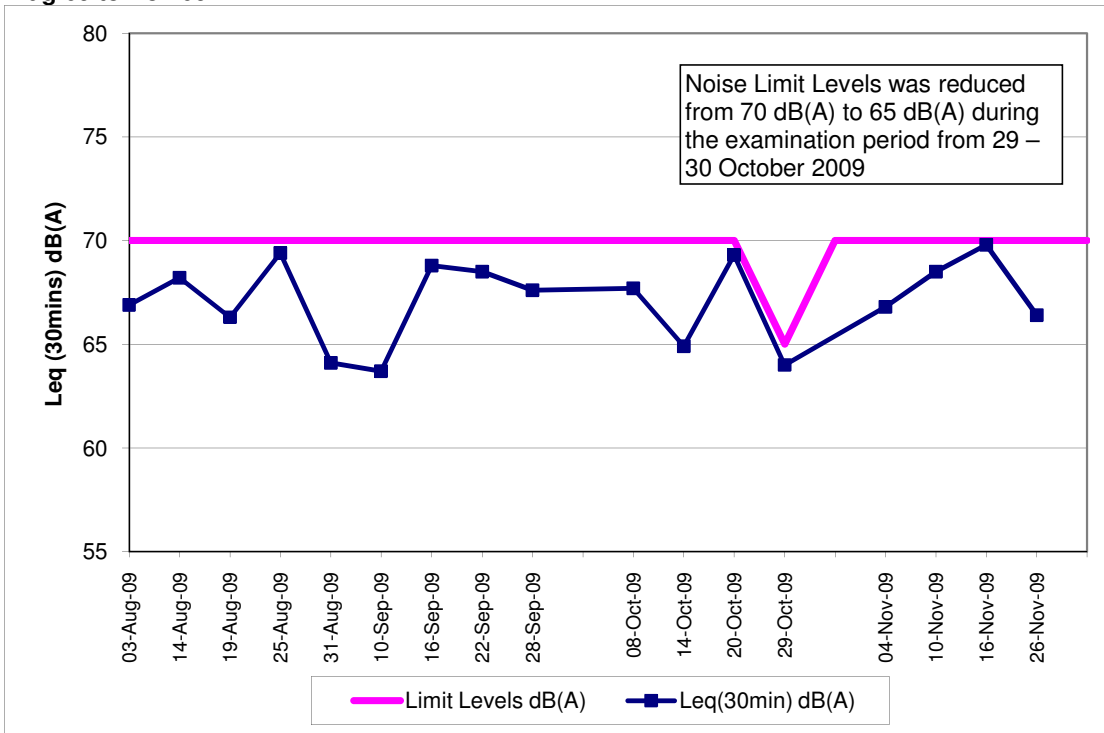
1: Baseline Noise Level
2: Limit Level
3: Corrected Noise Level

Note:
The limit level of NSR1 is 65dB(A) during school examination period.

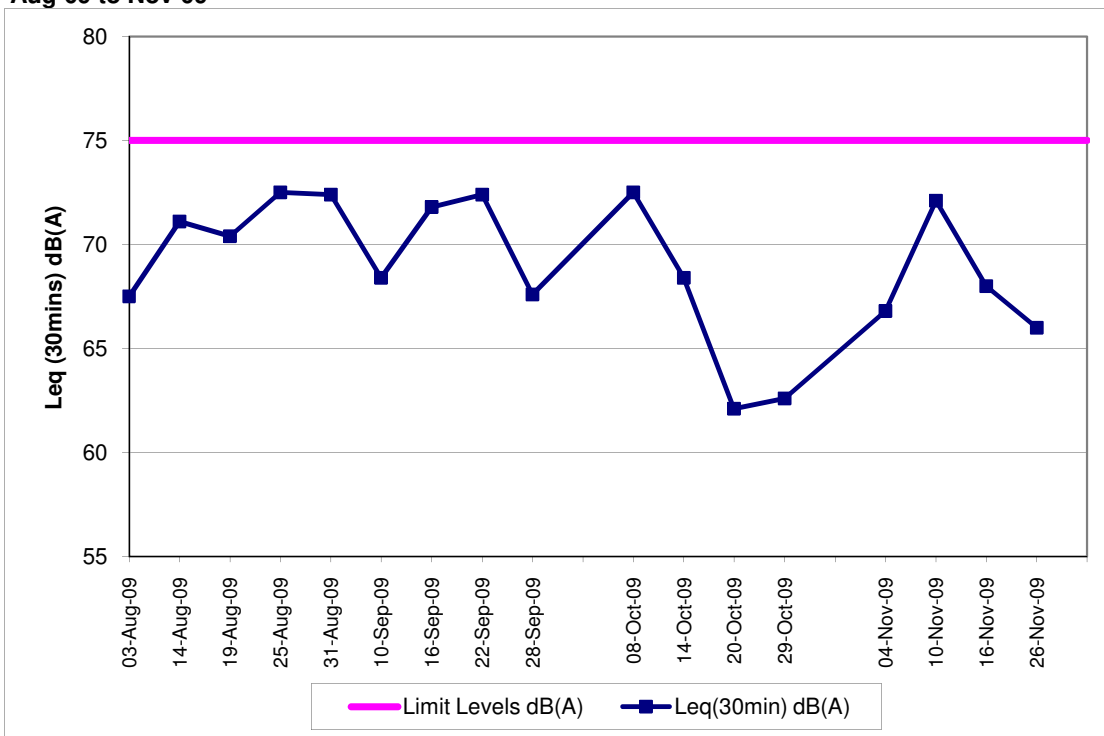
Red Bold indicates an exceedance of Limit Level

* Additional Noise Monitoring

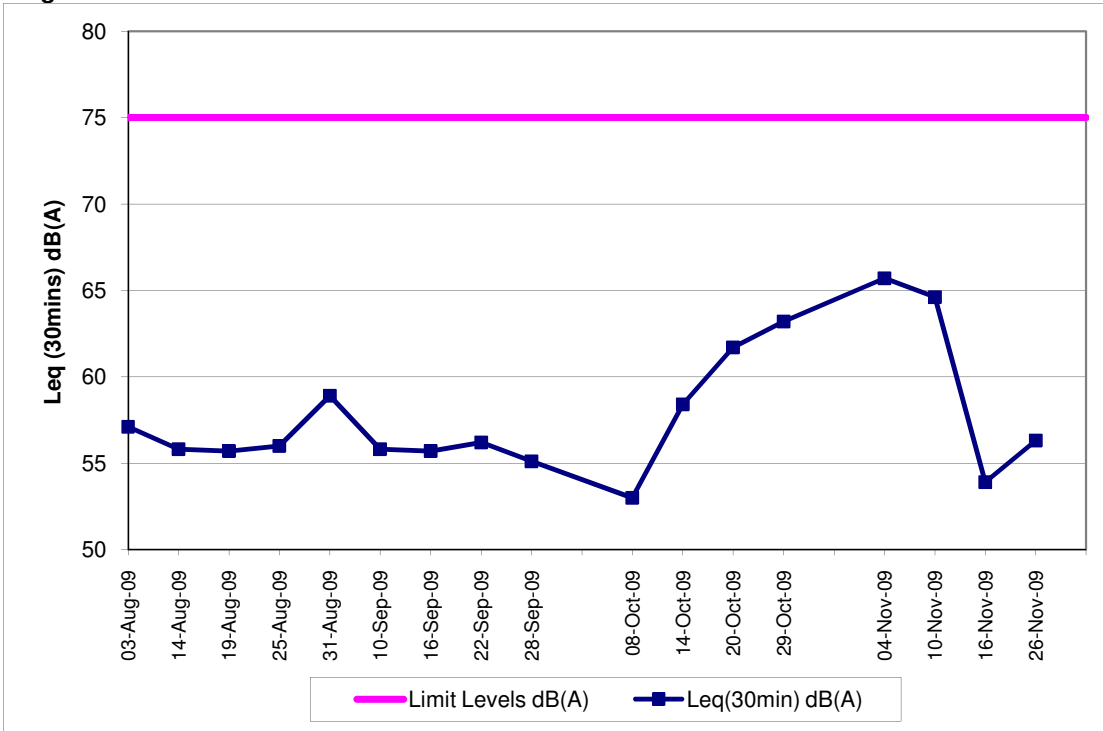
**Contract No. DC/2007/12 - Design and Construction of Tsuen Wan Drainage Tunnel
Noise Monitoring Results at Sik Sik Yuen Ho Fung College (NSR 1)
Aug-09 to Nov-09**



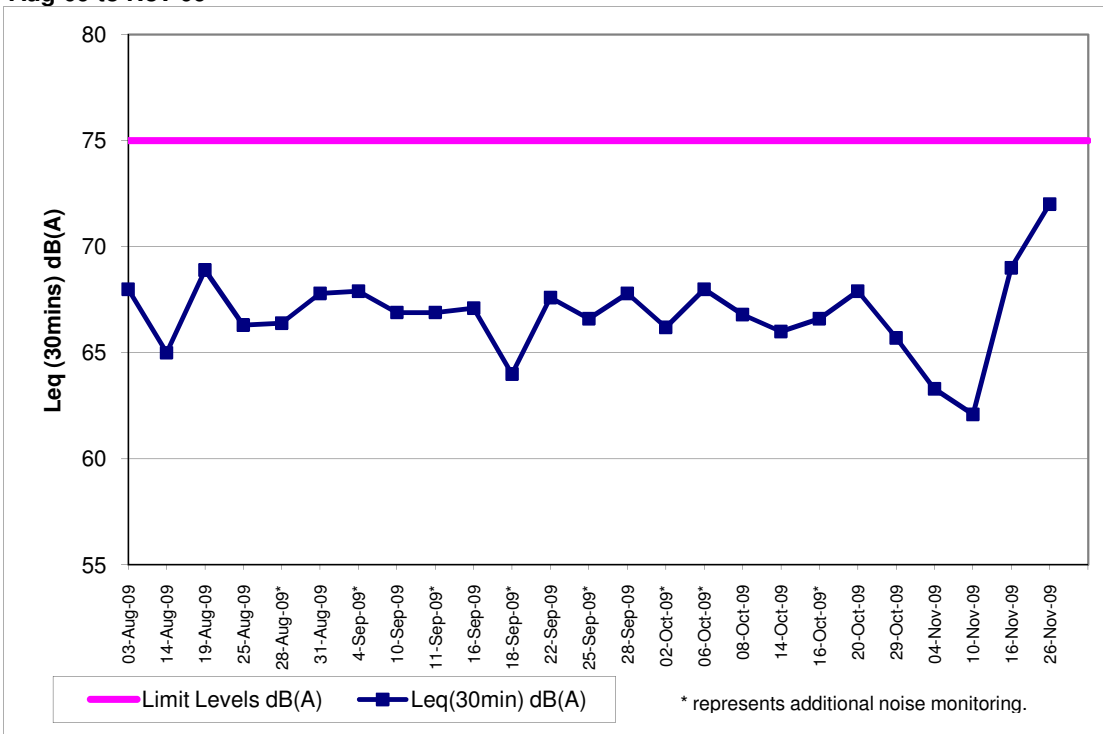
**Contract No. DC/2007/12 - Design and Construction of Tsuen Wan Drainage Tunnel
Noise Monitoring Results at Hong Hoi Chee Hong Temple (NSR 3)
Aug-09 to Nov-09**



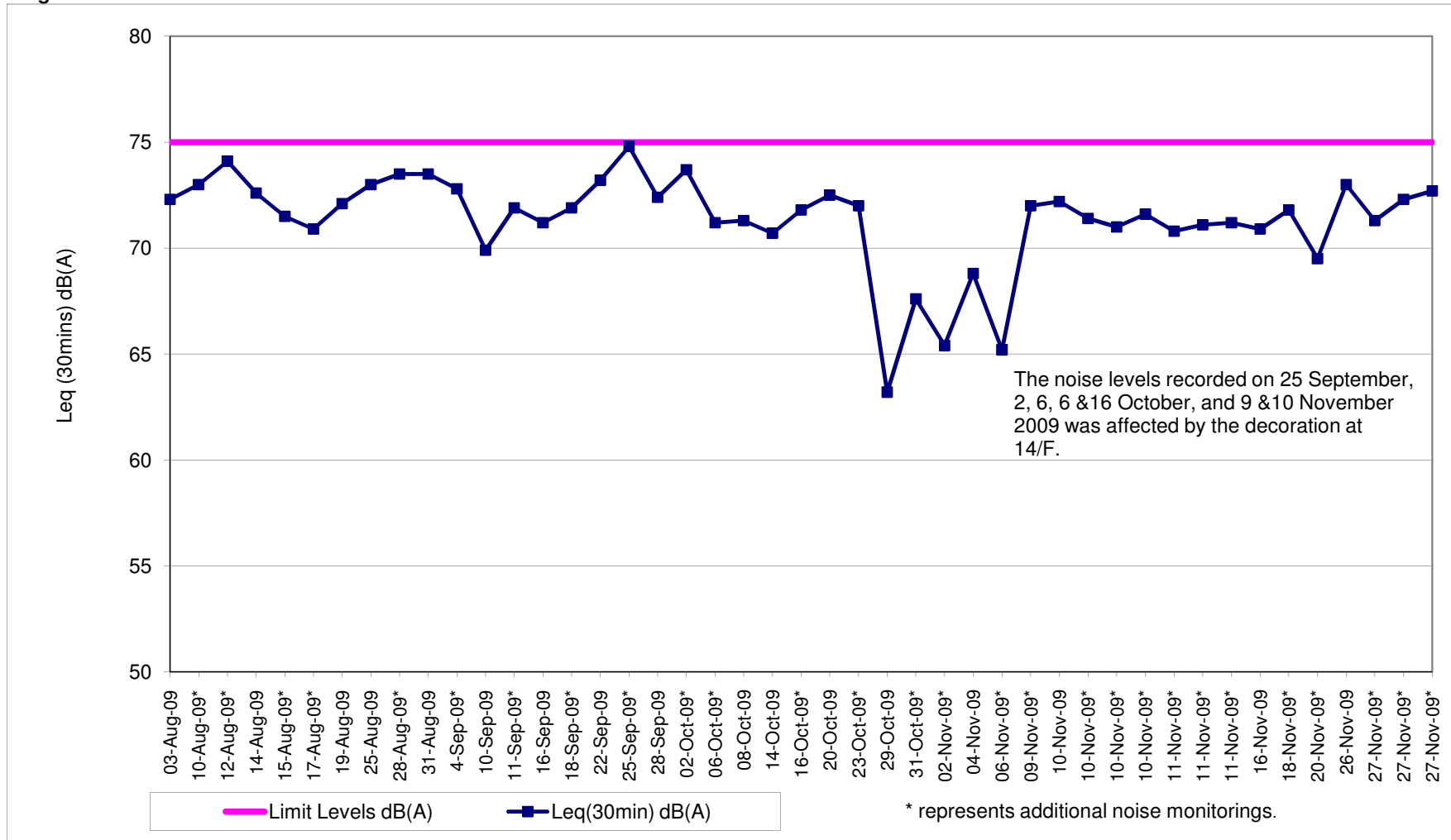
**Contract No. DC/2007/12 - Design and Construction of Tsuen Wan Drainage Tunnel
Noise Monitoring Results at Squatters (NSR 6)
Aug-09 to Nov-09**



**Contract No. DC/2007/12 - Design and Construction of Tsuen Wan Drainage Tunnel
Noise Monitoring Results at (Long Beach Gardens)
Aug-09 to Nov-09**



**Contract No. DC/2007/12 - Design and Construction of Tsuen Wan Drainage Tunnel
 Noise Monitoring Results at Greenview Terrace (NSR 9)
 Aug-09 to Nov-09**

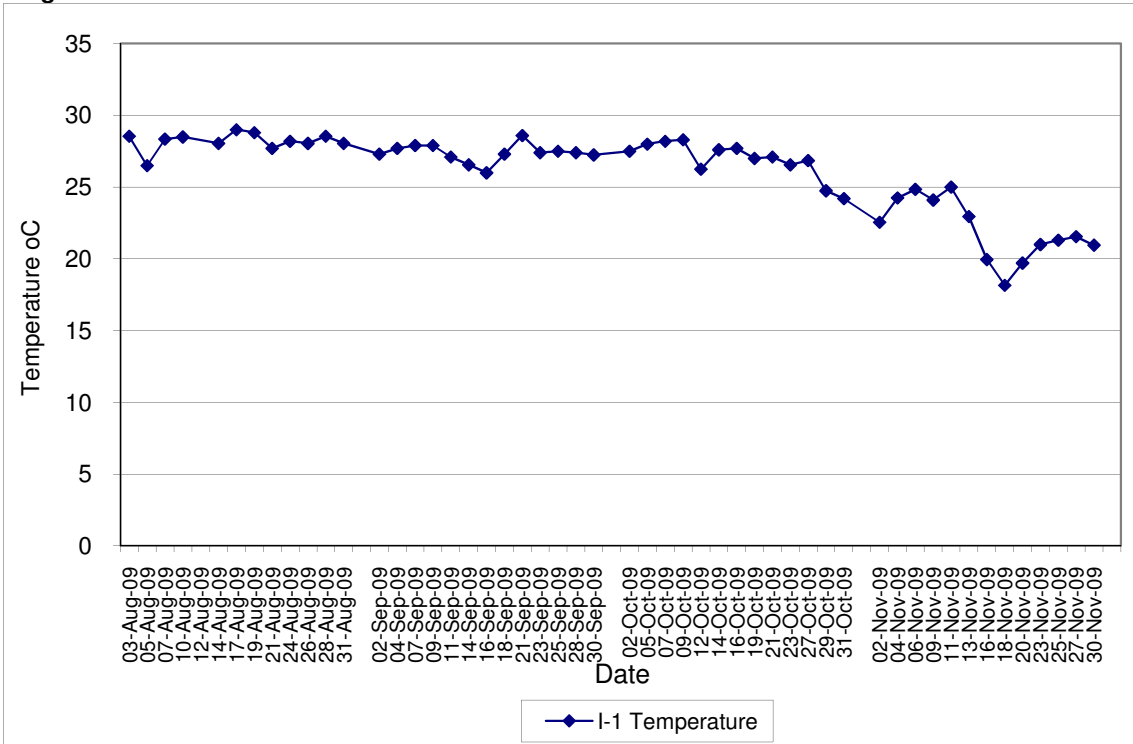


Contract No. DC/2007/12 - Design and Construction of Tsuen Wan Drainage Tunnel

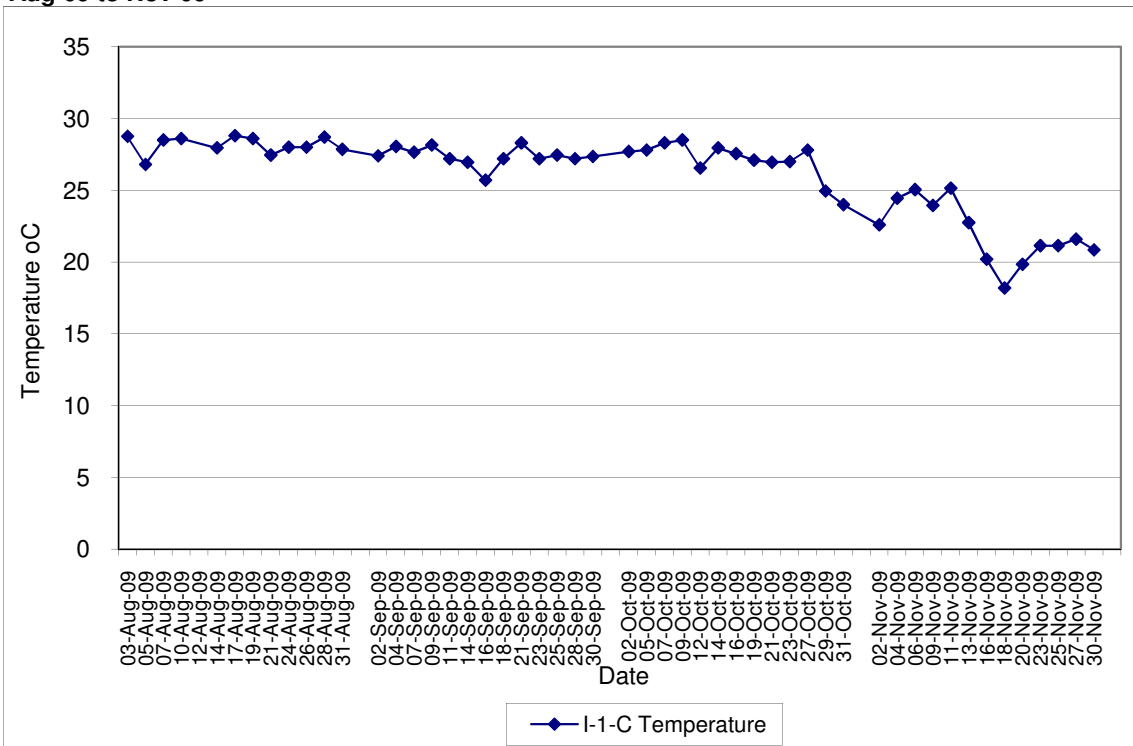
Water Quality Impact Monitoring Results

Monitoring Locations	Date	Start Time	Weather	Water Depth(m)	Temp			DO(mg/L)			Action/Limit Level of DO(mg/L)	pH			Turbidity(NTU)			Action/Limit Level of Tby	SS (mg/L)			Action/Limit Level of SS(mg/L)	Remarks:	Action to be taken
					1	2	Avg	1	2	Avg		1	2	Avg	1	2	Avg		1	2	Avg			
Sik Sik Yuen Ho Fung College I-1	02-Nov-09	11:00	Sunny	<1	22.60	22.50	22.55	7.97	7.92	7.95	3.42 / 3.34	7.33	7.32	7.33	4.05	4.12	4.09	9.75 / 12.47	18.2	17.4	17.8	8.85 / 10.17	Breaking by backhoe,excavation work	The exceedance is considered to be contributed by the high SS level at control station (I-1-C) from the muddy stain and no action should be taken.
	04-Nov-09	10:00	Sunny	<1	24.30	24.20	24.25	7.79	7.76	7.78		7.23	7.23	7.23	13.70	13.65	13.68		12.8	14.5	13.7		Breaking by backhoe,excavation work	The exceedance is considered to be contributed by the high turbidity and SS levels of control station (I-1-C) from muddy stain and no action should be required.
	06-Nov-09	10:07	Sunny	<1	24.80	24.90	24.85	8.21	8.26	8.24		7.34	7.34	7.34	20.70	20.10	20.40		8.2	9.4	8.8		Breaking by backhoe,excavation work	The exceedance is considered to be contributed by the high turbidity level of control station (I-1-C) from muddy stain and no action should be taken.
	09-Nov-09	10:45	Sunny	<1	24.10	24.10	24.10	7.84	7.90	7.87		7.32	7.32	7.32	2.75	2.70	2.73		3.7	3.8	3.8		Breaking by backhoe,excavation work	Nil
	11-Nov-09	10:55	Sunny	<1	25.00	25.00	25.00	6.96	6.90	6.93		7.46	7.42	7.44	5.50	5.43	5.47		3.9	3.0	3.5		Breaking by backhoe,excavation work	Nil
	13-Nov-09	10:45	Sunny	<1	22.90	23.00	22.95	8.05	8.00	8.03		7.25	7.25	7.25	3.65	3.74	3.70		2.1	2.3	2.2		Breaking by backhoe,excavation work	Nil
	16-Nov-09	09:58	Cloudy	<1	20.00	19.90	19.95	8.38	8.33	8.36		7.59	7.59	7.59	2.50	2.44	2.47		2.0	2.0	2.0		Breaking by backhoe,excavation work	Nil
	18-Nov-09	10:38	Cloudy	<1	18.10	18.20	18.15	8.85	8.80	8.83		7.66	7.63	7.65	3.40	3.31	3.36		2.0	2.0	2.0		Breaking by backhoe,excavation work	Nil
	20-Nov-09	10:00	Sunny	<1	19.70	19.70	19.70	8.61	8.53	8.57		7.21	7.22	7.22	2.48	2.56	2.52		2.5	2.1	2.3		Breaking by backhoe,excavation work	Nil
	23-Nov-09	10:48	Sunny	<1	21.00	21.00	21.00	8.45	8.37	8.41		7.44	7.43	7.44	3.65	3.60	3.63		2.0	2.0	2.0		Breaking by backhoe,excavation work	Nil
	25-Nov-09	10:37	Sunny	<1	21.30	21.30	21.30	8.38	8.35	8.37		7.44	7.44	7.44	11.00	10.60	10.80		10.5	12.1	11.3		Breaking by backhoe,excavation work	The exceedance is considered to be contributed by the high turbidity and SS levels of control station (I-1-C) due to other construction activities and no action should be taken.
	27-Nov-09	10:29	Sunny	<1	21.50	21.60	21.55	8.33	8.30	8.32		7.56	7.52	7.54	9.42	9.36	9.39		12.6	12.6	12.6		Breaking by backhoe,excavation work	The exceedance is considered to be contributed by the high SS level of control station (I-1-C) due to other construction activities and no action should be taken.
	30-Nov-09	10:22	Sunny	<1	20.90	21.00	20.95	8.27	8.24	8.26		7.50	7.52	7.51	9.35	9.42	9.39		15.4	17.2	16.3		Breaking by backhoe,excavation work	Nil
Sik Sik Yuen Ho Fung College I-1-C	02-Nov-09	10:50	Sunny	<1	22.70	22.50	22.60	8.00	8.03	8.02	-/-	7.32	7.32	7.32	4.18	4.27	4.23	-/-	16.0	17.4	16.7	-/-	Muddy stain is observed at control station.	Nil
	04-Nov-09	09:50	Sunny	<1	24.40	24.50	24.45	7.85	7.81	7.83		7.22	7.22	7.22	14.18	14.03	14.11		14.1	13.2	13.7		Muddy stain is observed at control station.	Nil
	06-Nov-09	09:55	Sunny	<1	25.00	25.10	25.05	8.17	8.20	8.19		7.34	7.32	7.33	21.30	21.80	21.55		9.1	9.0	9.1		Muddy stain is observed at control station.	Nil
	09-Nov-09	10:33	Sunny	<1	23.90	24.00	23.95	7.83	7.87	7.85		7.32	7.32	7.32	2.88	2.85	2.87		3.4	3.6	3.5		Nil	Nil
	11-Nov-09	10:45	Sunny	<1	25.10	25.20	25.15	6.94	6.99	6.97		7.52	7.52	7.52	5.71	5.65	5.68		3.8	3.6	3.7		Nil	Nil
	13-Nov-09	10:35	Sunny	<1	22.70	22.80	22.75	8.13	8.08	8.11		7.26	7.25	7.26	3.86	3.75	3.81		2.8	2.0	2.4		Nil	Nil
	16-Nov-09	09:45	Cloudy	<1	20.20	20.20	20.20	8.40	8.46	8.43		7.58	7.59	7.59	2.66	2.73	2.70		2.0	2.0	2.0		Nil	Nil
	18-Nov-09	10:26	Cloudy	<1	18.20	18.20	18.20	8.91	8.87	8.89		7.65	7.65	7.65	3.56	3.43	3.50		2.0	2.0	2.0		Nil	Nil
	20-Nov-09	09:50	Sunny	<1	19.90	19.80	19.85	8.69	8.63	8.66		7.25	7.25	7.25	2.70	2.65	2.68		2.6	2.6	2.6		Nil	Nil
	23-Nov-09	10:37	Sunny	<1	21.20	21.10	21.15	8.50	8.46	8.48		7.44	7.45	7.45	3.71	3.66	3.69		2.0	2.0	2.0		Nil	Nil
	25-Nov-09	10:25	Sunny	<1	21.10	21.20	21.15	8.46	8.41	8.44		7.42	7.44	7.43	11.00	11.22	11.11		11.0	11.2	11.1		Other construction activities at control station is observed.	Nil
	27-Nov-09	10:18	Sunny	<1	21.60	21.60	21.60	8.27	8.31	8.29		7.52	7.52	7.52	9.55	9.36	9.46		11.1	12.2	11.7		Other construction activities at control station is observed.	Nil
	30-Nov-09	10:07	Sunny	<1	20.80	20.90	20.85	8.31	8.29	8.30		7.52	7.52	7.52	9.62	9.51	9.57		17.6	20.0	18.8		Nil	Nil
Hong Hoi Chee Hong Temple I-2	02-Nov-09	10:28	Sunny	<1	22.00	22.10	22.05	7.99	8.04	8.02	3.66 / 3.63	7.28	7.28	7.28	1.56	1.62	1.59	6.63 / 6.99	2.0	2.0	2.0	7.68 / 8.34	Excavation by backhoe	Nil
	04-Nov-09	14:27	Sunny	<1	24.00	24.10	24.05	8.06	8.01	8.04		7.32	7.32	7.32	4.00	3.95	3.98		2.3	2.9	2.6		Excavation by backhoe	Nil
	06-Nov-09	09:28	Sunny	<1	25.20	25.20	25.20	8.33	8.29	8.31		7.32	7.32	7.32	1.30	1.25	1.28		2.0	2.0	2.0		Excavation by backhoe	Nil
	09-Nov-09	10:20	Sunny	<1	24.50	24.50	24.50	7.83	7.89	7.86		7.34	7.33	7.34	2.01	2.09	2.05		3.8	4.1	4.0		Excavation by backhoe	The exceedance is considered to be contributed by natural variation and no action should be required.
	11-Nov-09	10:27	Sunny	<1	24.90	25.00	24.95	7.35	7.30	7.33		7.48	7.48	7.48	9.86	9.91	9.89		9.4	10.1	9.8		Excavation by backhoe	The exceedance is considered to be contributed by the high turbidity and SS levels of control station (I-2-C) due to construction activities of Landslip preventative works for slopes and retaining walls by CEDD and no action should be taken.
	13-Nov-09	10:16	Sunny	<1	23.30	23.30	23.30	8.01	7.97	7.99		7.32	7.32	7.32	8.41	8.56	8.49		5.0	5.1	5.1		Hammering and Cutting work	The exceedance is considered to be contributed by the high turbidity level of control station (I-2-C) due to construction activities of Landslip preventative works for slopes and retaining walls by CEDD and no action should be taken.
	16-Nov-09	10:30	Cloudy	<1	20.40	20.30	20.35	8.41	8.48	8.45		7.67	7.65	7.66	2.18	2.15	2.17		2.0	2.2	2.1		Excavation by backhoe	Nil
	18-Nov-09	09:55	Cloudy	<1	17.90	17.90	17.90	9.12	9.17	9.15		7.56	7.55	7.56	6.53	6.62	6.58		3.8	3.0	3.4		Excavation by backhoe	Nil
	20-Nov-09	10:37	Sunny	<1	20.00	20.00	20.00	8.80	8.83	8.82		7.45	7.44	7.45	1.65	1.62	1.64		2.0	2.0	2.0		Excavation by backhoe	Nil
	23-Nov-09	10:12	Sunny	<1	21.20	21.20	21.20	8.70	8.72	8.71		7.55	7.56	7.56	3.07	3.03	3.05		2.8	3.1	3.0		Excavation by backhoe	The exceedance is considered to be contributed by natural variation and no action should be required.
	25-Nov-09	10:00	Sunny	<1	21.30	21.30	21.30	8.73	8.68	8.71		7.35	7.35	7.35	2.33	2.30	2.32		2.0	2.0	2.0		Excavation by backhoe	Nil
	27-Nov-09	09:52	Sunny	<1	21.80	21.80	21.80	8.47	8.42	8.45		7.42	7.42	7.42	1.70	1.63	1.67		2.0	2.0	2.0		Excavation by backhoe	Nil
	30-Nov-09	09:45	Sunny	<1	21.00	21.00	21.00	8.59	8.65	8.62		7.48	7.48	7.48	3.56	3.61	3.59		2.2	2.3	2.3		Excavation by backhoe	Nil
Hong Hoi Chee Hong Temple I-2-C	02-Nov-09	10:18	Sunny	<1	22.20	22.30	22.25	7.92	7.97	7.95	-/-	7.23	7.22	7.23	1.60	1.71	1.66	-/-	2.0	2.0	2.0	-/-	Nil	Nil
	04-Nov-09	14:15	Sunny	<1	24.10	24.10	24.10	8.14	8.18	8.16		7.23	7.23	7.23	4.10	4.12	4.11		2.2	2.2	2.2		Nil	Nil
	06-Nov-09	09:18	Sunny	<1	25.00	25.00	25.00	8.41	8.36	8.39		7.32	7.31	7.32	1.35	1.42	1.39		2.0	2.0	2.0		Nil	Nil
	09-Nov-09	10:10	Sunny	<1	24.20	24.20	24.20	7.77	7.81	7.79		7.33	7.33	7.33	2.15	2.22	2.19		2.6	2.0	2.3		Nil	Nil
	11-Nov-09	10:15	Sunny	<1	24.70	24.80	24.75	7.43	7.37	7.40		7.50	7.48	7.49	10.31	10.27	10.29		10.2	11.2	10.7		Construction activities of Landslip preventative works for slopes and retaining walls by CEDD	Nil
	13-Nov-09	10:04	Sunny	<1	23.10	23.00	23.05	8.09	8.03	8.06		7.34	7.33	7.34	8.71	8.86	8.79		5.8	5.8	5.8		Construction activities of Landslip preventative works for slopes and retaining walls by CEDD	Nil
	16-Nov-09	10:20	Cloudy	<1	20.30	20.30	20.30	8.40	8.36	8.38		7.62	7.66	7.64	2.23	2.31	2.27		2.0	2.0	2.0		Nil	Nil
	18-Nov-09	09:42	Cloudy	<1	17.80	17.90	17.85	9.09	9.15	9.12		7.52	7.53	7.53	6.77	6.83	6.80		3.9	5.2	4.6		Nil	Nil
	20-Nov-09	10:25	Sunny	<1	19.60	19.60	19.60	8.88	8.83	8.86		7.43	7.43	7.43	1.74	1.70	1.72		2.0	2.0	2.0		Nil	Nil
	23-Nov-09	10:00	Sunny	<1	21.00	21.00	21.00	8.75	8.73	8.74		7.52	7.52	7.52	3.12	3.18	3.15		2.0	2.0	2.0		Nil	Nil
	25-Nov-09	09:50	Sunny	<1	21.40	21.40	21.40	8.78	8.72	8.75		7.33	7.34	7.34	2.43	2.51	2.47		2.0	2.0	2.0		Nil	Nil
	27-Nov-09	09:40	Sunny	<1	21.80	21.80	21.80	8.54	8.49	8.52		7.44	7.45	7.45	1.83	1.75	1.79		2.0	2.0	2.0		Nil	Nil
	30-Nov-09	09:33	Sunny	<1	21.00	21.10	21.05	8.49	8.61	8.55		7.47	7.46	7.47	3.70	3.65	3.68		2.6	2.6	2.6		Nil	Nil
Squatters I-3	02-Nov-09	11:43	Sunny	<1	22.00	21.90	21.95	7.87	7.83	7.85	3.65 / 3.51	7.23												

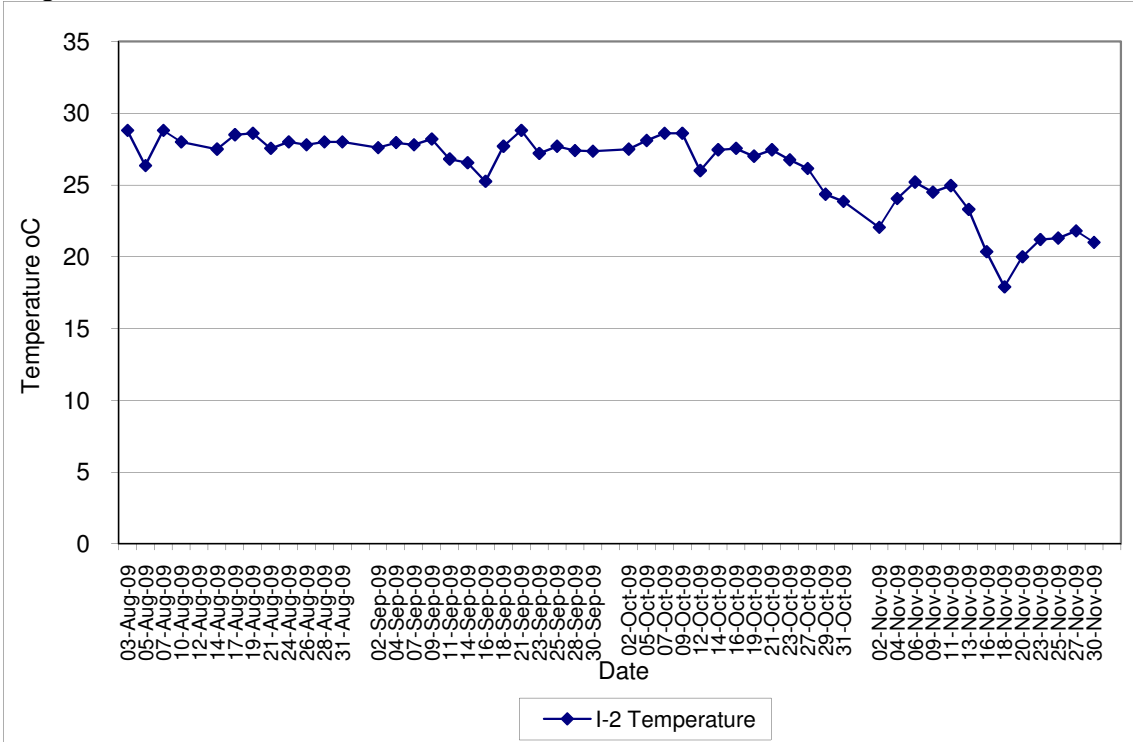
**Contract No. DC/2007/12 - Design and Construction of Tsuen Wan Drainage Tunnel
 Water Quality Results at Sik Sik Yuen Ho Fung College (I-1)
 Aug-09 to Nov-09**



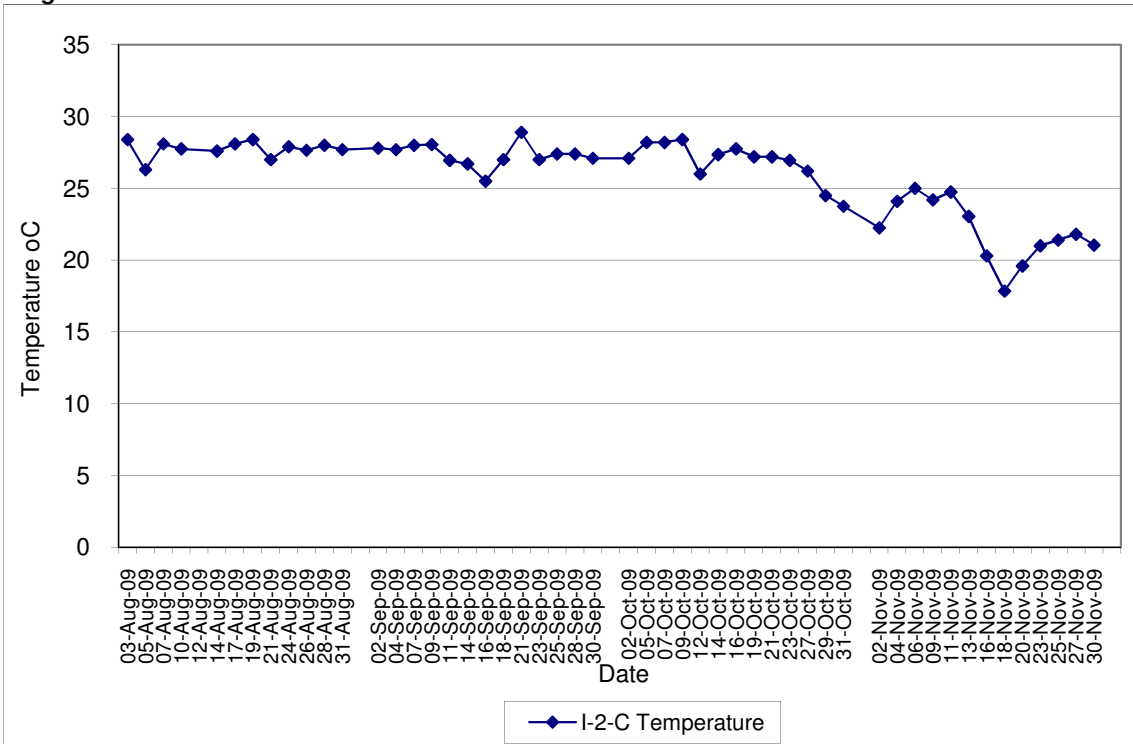
**Contract No. DC/2007/12 - Design and Construction of Tsuen Wan Drainage Tunnel
 Water Quality Results at Sik Sik Yuen Ho Fung College (I-1-C)
 Aug-09 to Nov-09**



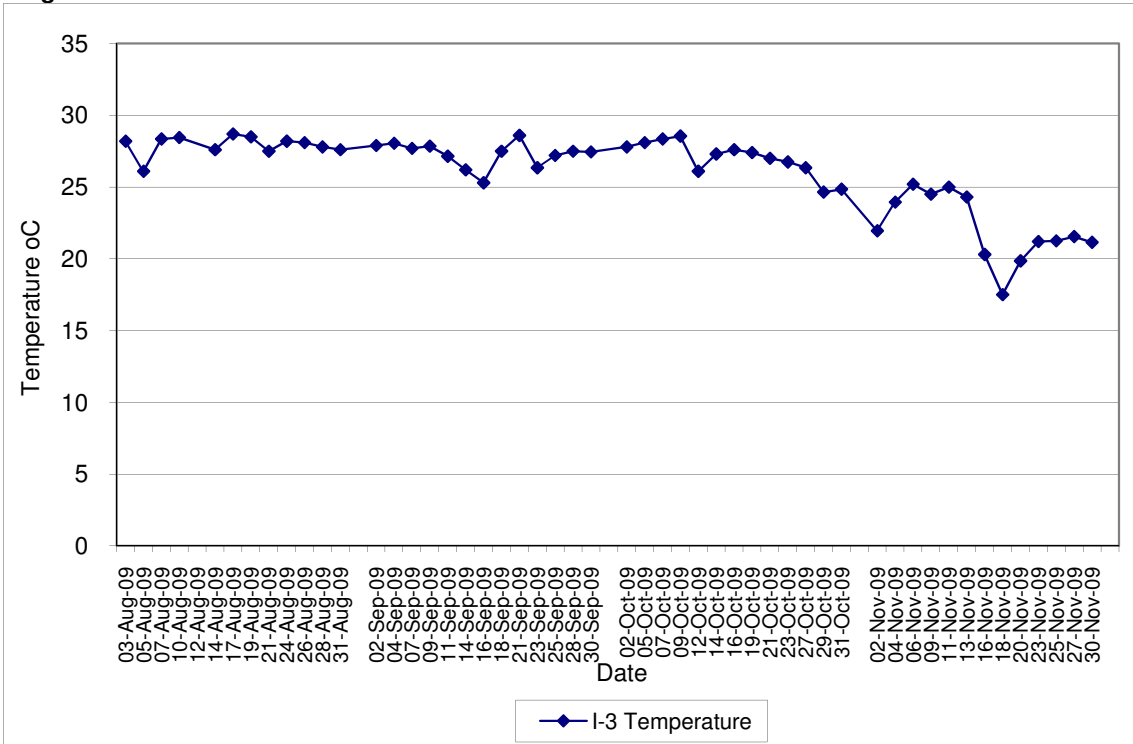
**Contract No. DC/2007/12 - Design and Construction of Tsuen Wan Drainage Tunnel
 Water Quality Results at Hong Hoi Chee Hong Temple (I-2)
 Aug-09 to Nov-09**



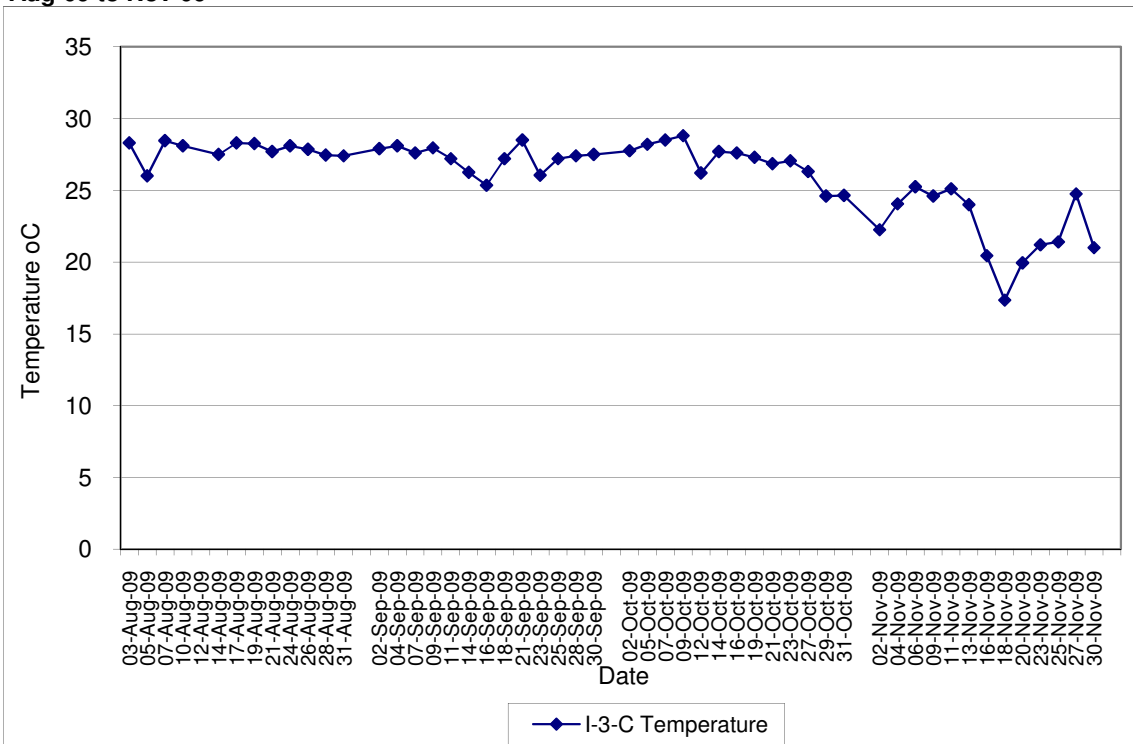
**Contract No. DC/2007/12 - Design and Construction of Tsuen Wan Drainage Tunnel
 Water Quality Results at Hong Hoi Chee Hong Temple (I-2-C)
 Aug-09 to Nov-09**



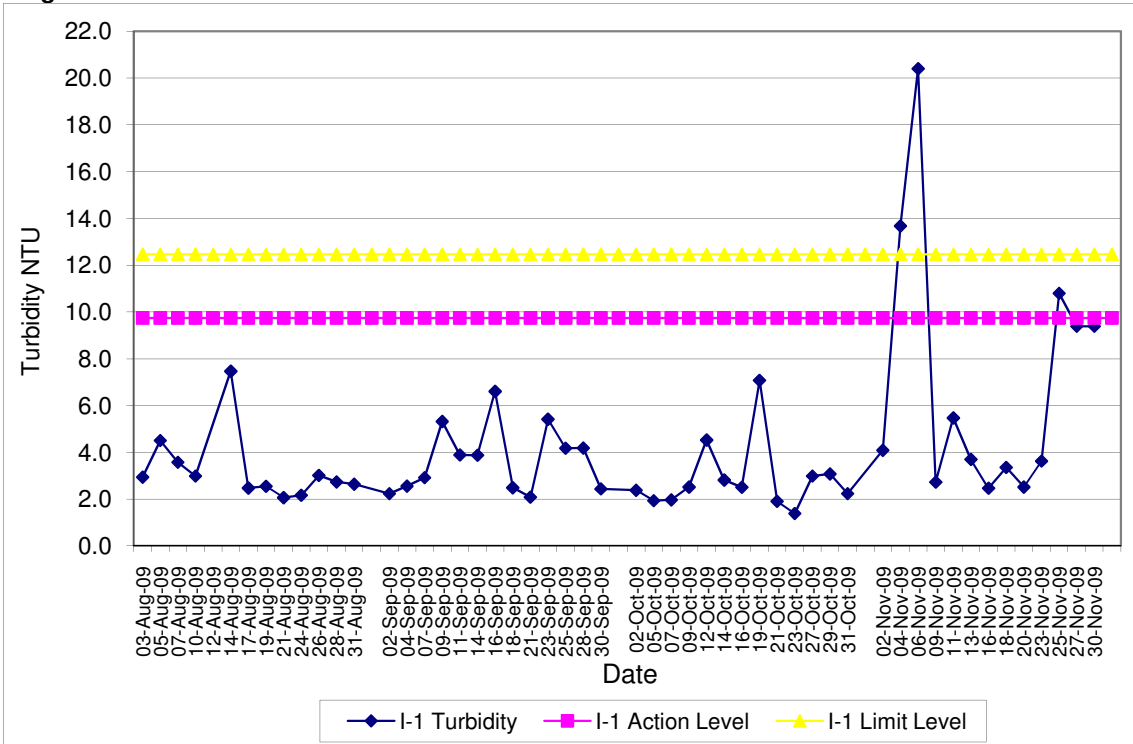
**Contract No. DC/2007/12 - Design and Construction of Tsuen Wan Drainage Tunnel
 Water Quality Results at Squatters (I-3)
 Aug-09 to Nov-09**



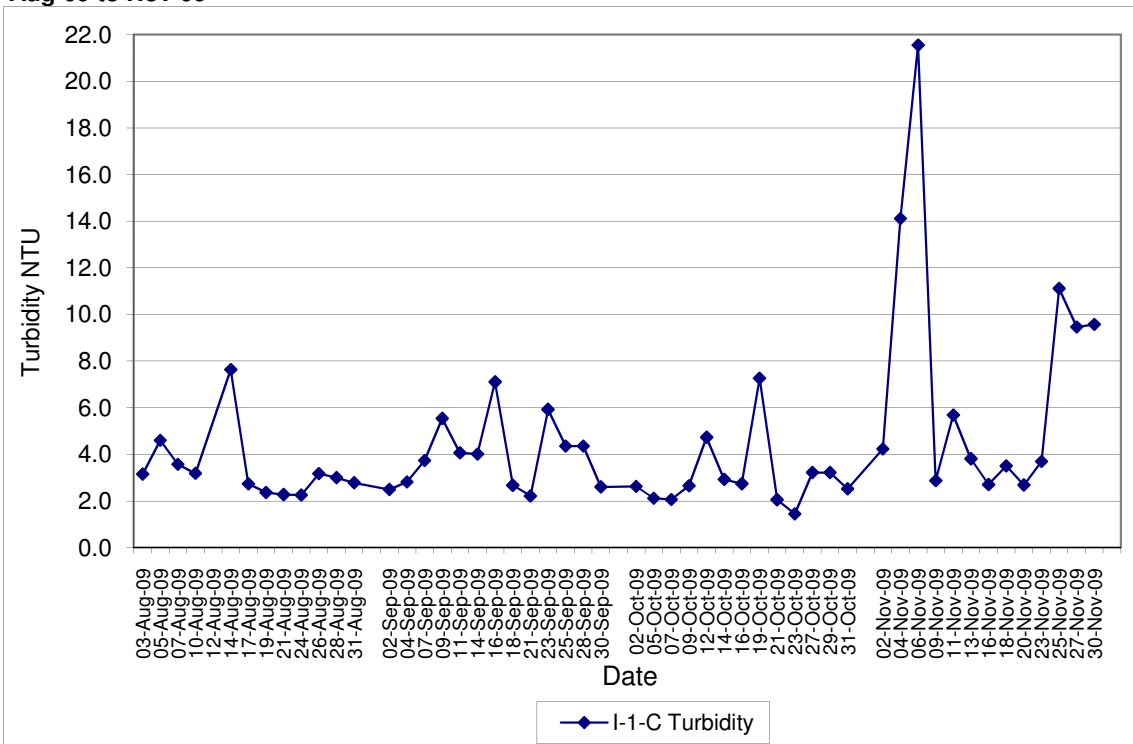
**Contract No. DC/2007/12 - Design and Construction of Tsuen Wan Drainage Tunnel
 Water Quality Results at Squatters (I-3-C)
 Aug-09 to Nov-09**



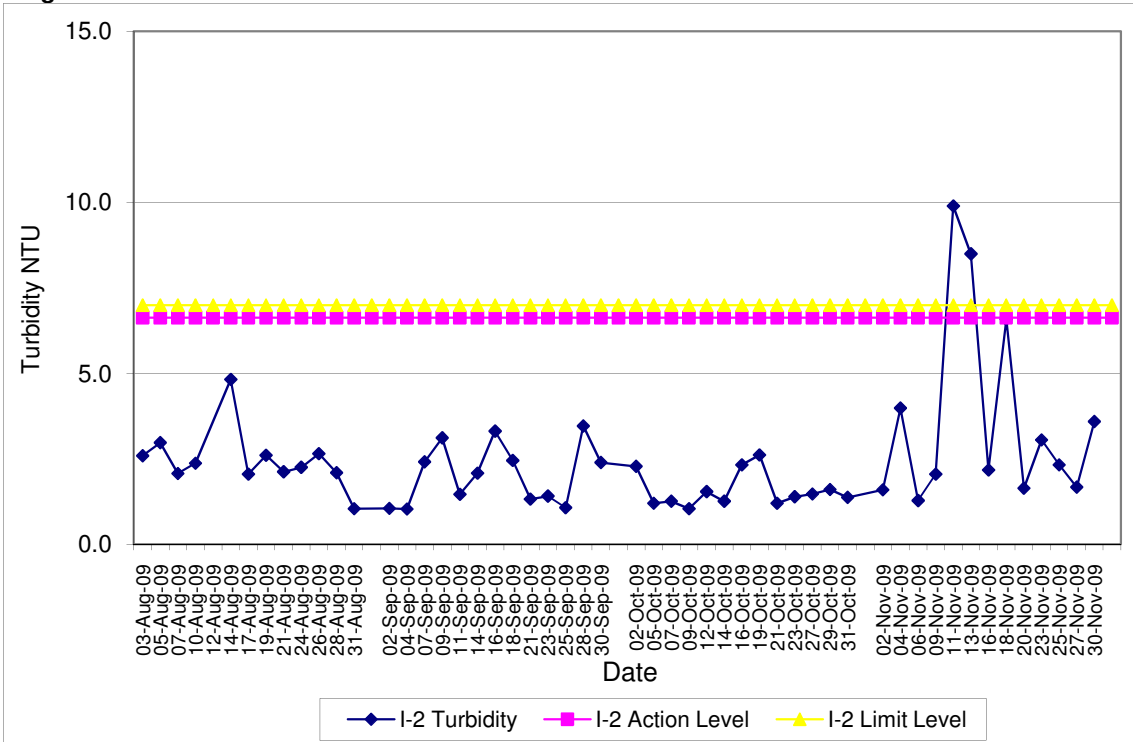
**Contract No. DC/2007/12 - Design and Construction of Tsuen Wan Drainage Tunnel
 Water Quality Results at Sik Sik Yuen Ho Fung College (I-1)
 Aug-09 to Nov-09**



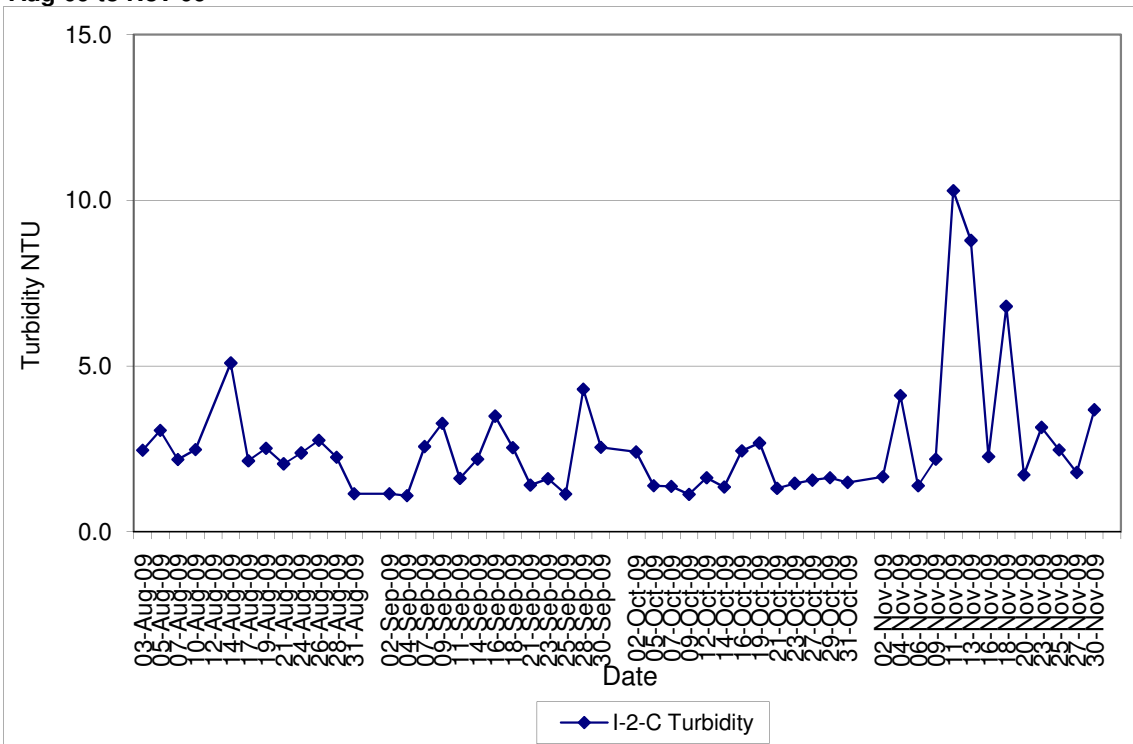
**Contract No. DC/2007/12 - Design and Construction of Tsuen Wan Drainage Tunnel
 Water Quality Results at Sik Sik Yuen Ho Fung College (I-1-C)
 Aug-09 to Nov-09**



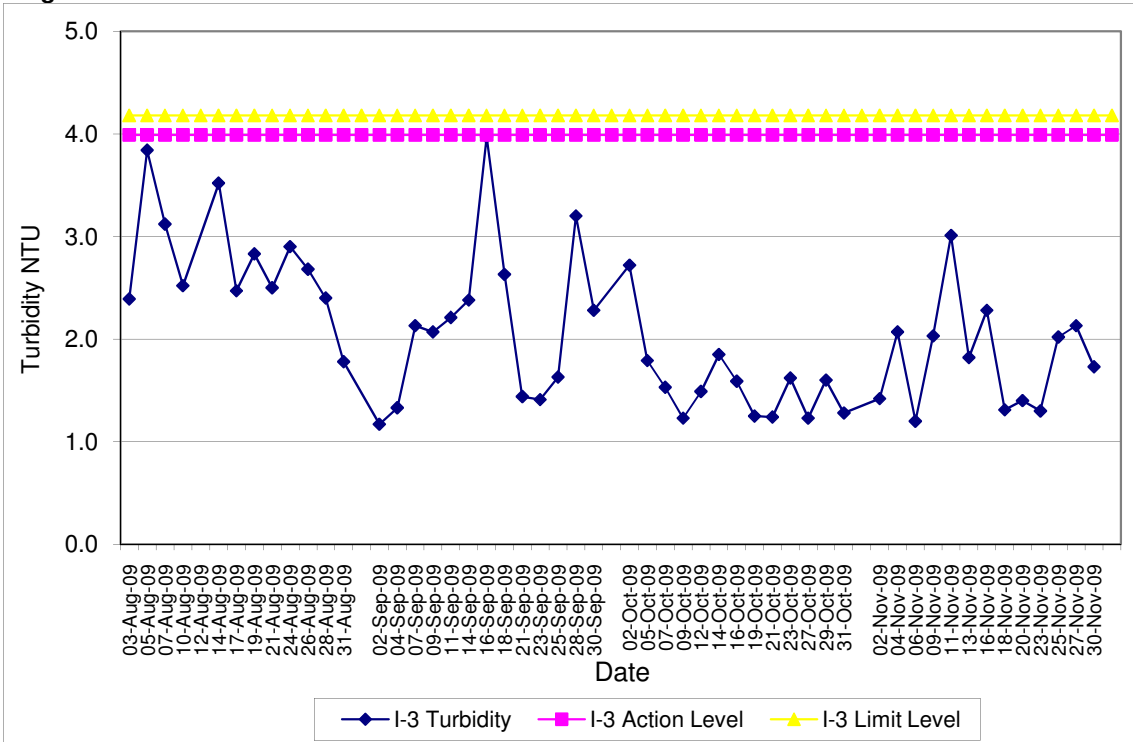
**Contract No. DC/2007/12 - Design and Construction of Tsuen Wan Drainage Tunnel
 Water Quality Results at Hong Hoi Chee Hong Temple (I-2)
 Aug-09 to Nov-09**



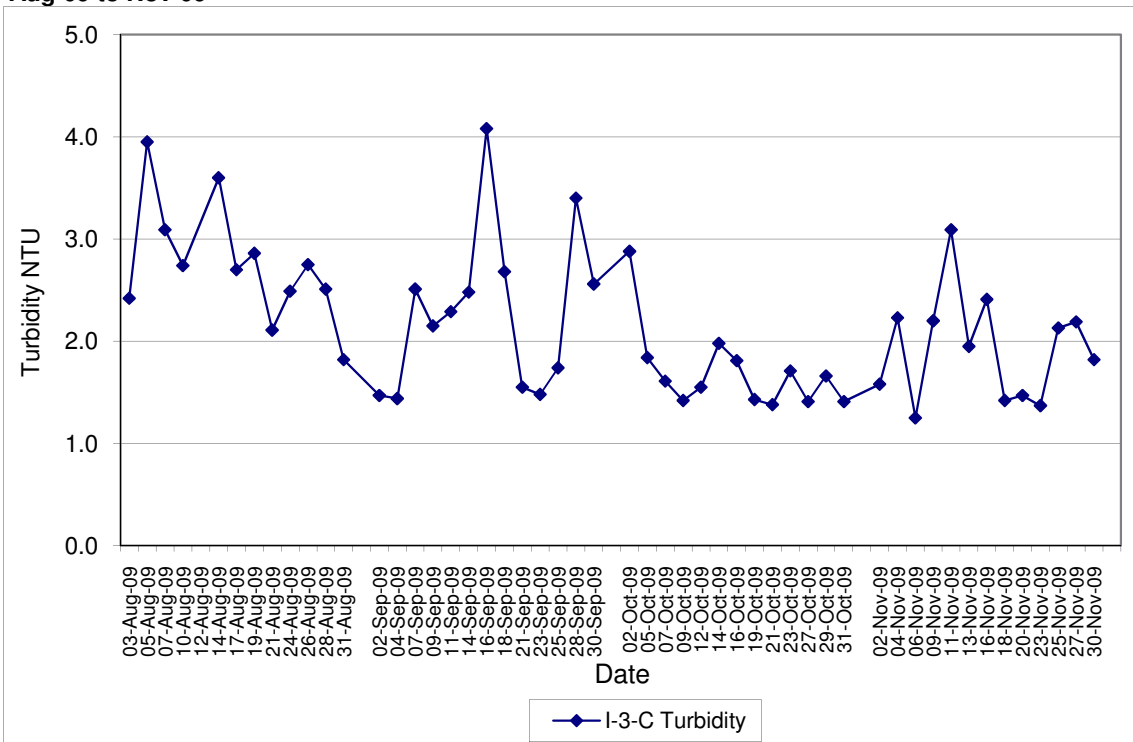
**Contract No. DC/2007/12 - Design and Construction of Tsuen Wan Drainage Tunnel
 Water Quality Results at Hong Hoi Chee Hong Temple (I-2-C)
 Aug-09 to Nov-09**



**Contract No. DC/2007/12 - Design and Construction of Tsuen Wan Drainage Tunnel
Water Quality Results at Squatters (I-3)
Aug-09 to Nov-09**

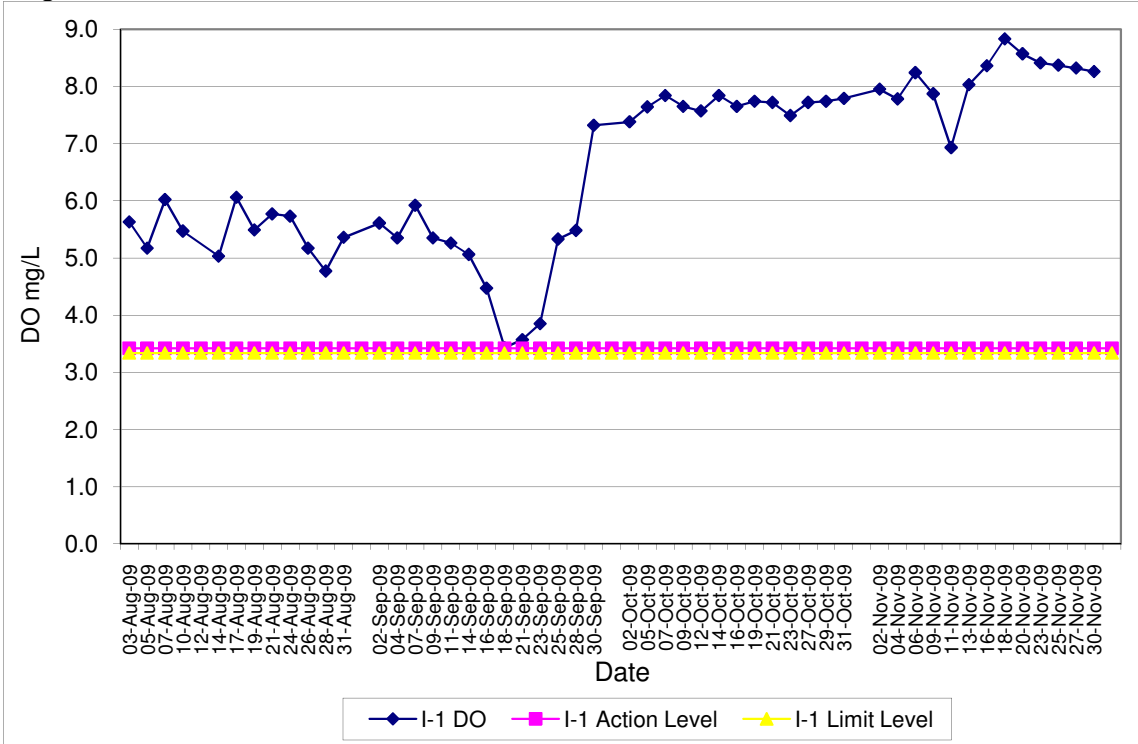


**Contract No. DC/2007/12 - Design and Construction of Tsuen Wan Drainage Tunnel
Water Quality Results at Squatters (I-3-C)
Aug-09 to Nov-09**

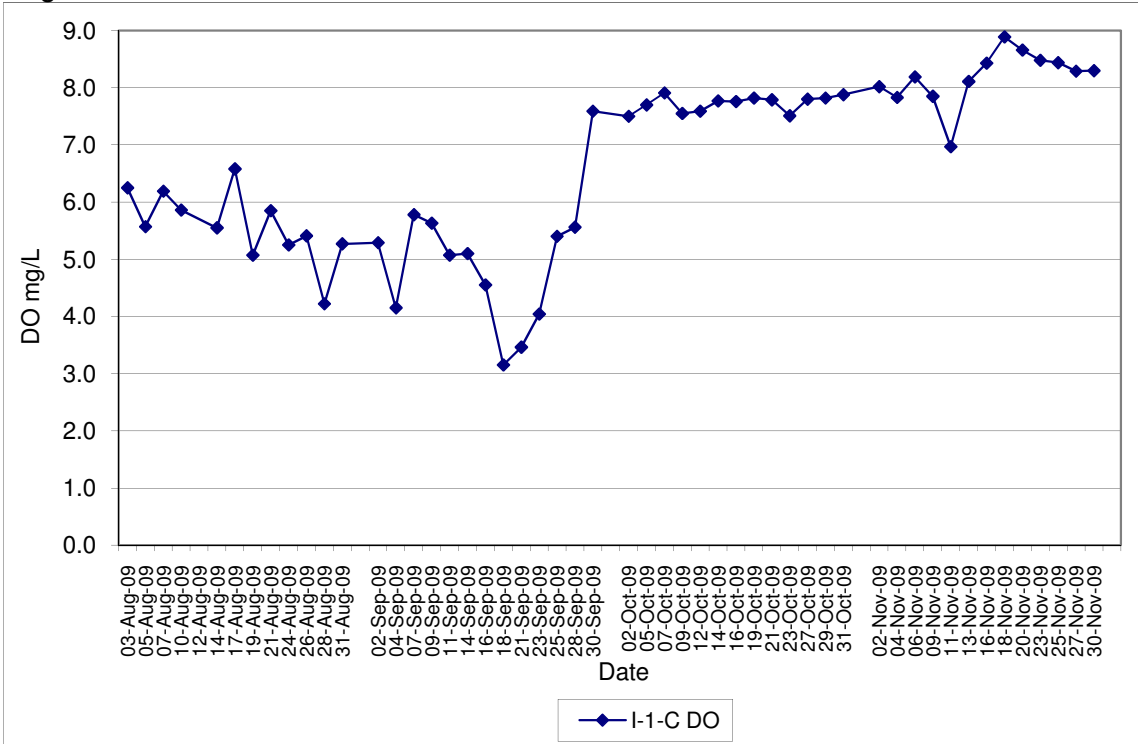


**Contract No. DC/2007/12 - Design and Construction of Tsuen Wan Drainage Tunnel
 Water Quality Results at Sik Sik Yuen Ho Fung College (I-1)
 Aug-09 to Nov-09**

Note: Exceedances of Action / Limit Levels occur when the levels of DO are below the respective limit levels.

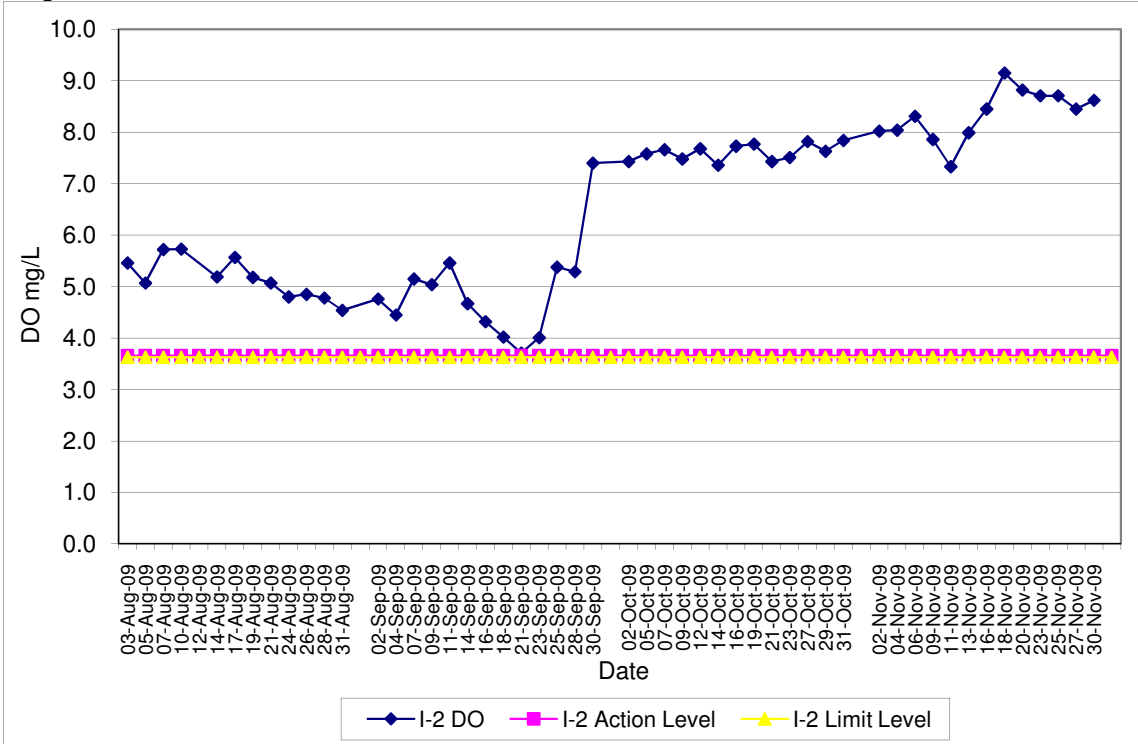


**Contract No. DC/2007/12 - Design and Construction of Tsuen Wan Drainage Tunnel
 Water Quality Results at Sik Sik Yuen Ho Fung College (I-1-C)
 Aug-09 to Nov-09**

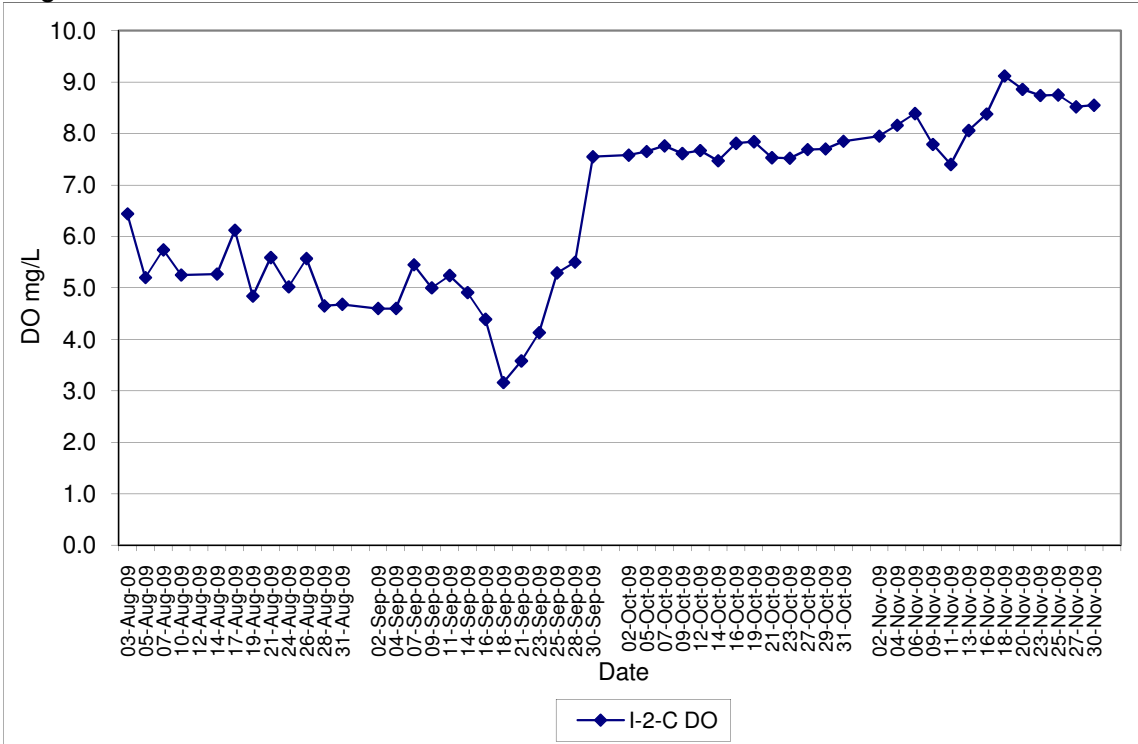


Contract No. DC/2007/12 - Design and Construction of Tsuen Wan Drainage Tunnel
Water Quality Results at Hong Hoi Chee Hong Temple (I-2)
Aug-09 to Nov-09

Note: Exceedances of Action / Limit Levels occur when the levels of DO are below the respective limit levels.

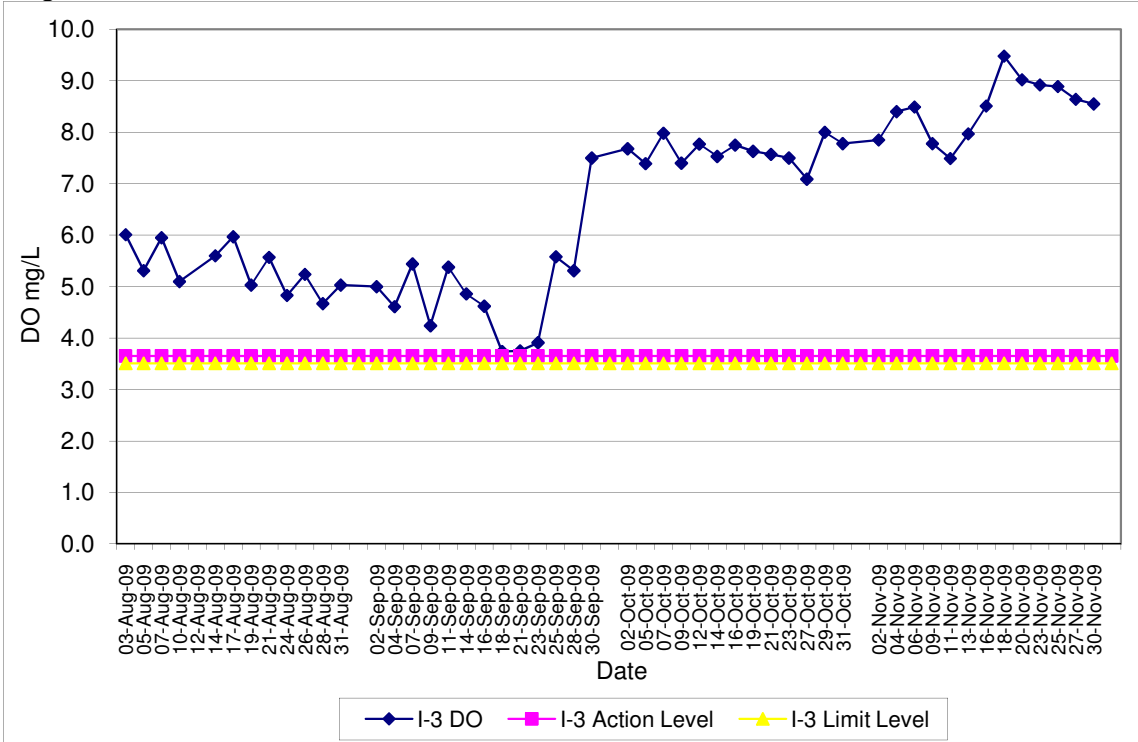


Contract No. DC/2007/12 - Design and Construction of Tsuen Wan Drainage Tunnel
Water Quality Results at Hong Hoi Chee Hong Temple (I-2-C)
Aug-09 to Nov-09

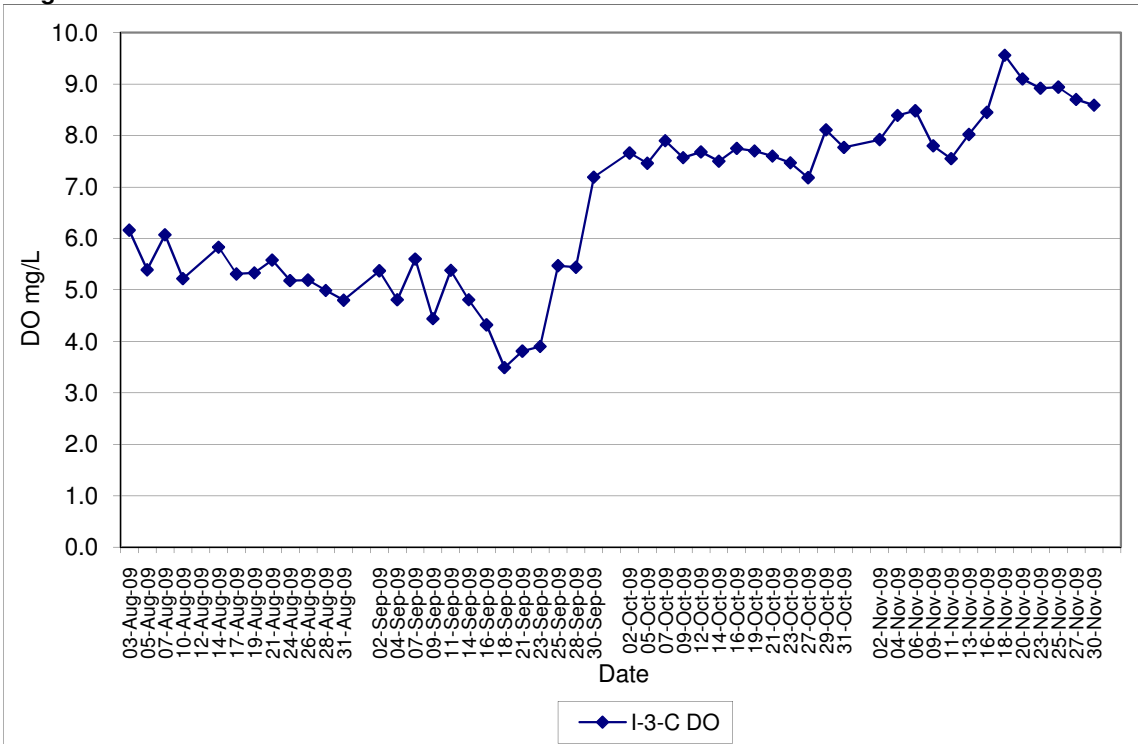


Contract No. DC/2007/12 - Design and Construction of Tsuen Wan Drainage Tunnel
Water Quality Results at Squatters (I-3)
Aug-09 to Nov-09

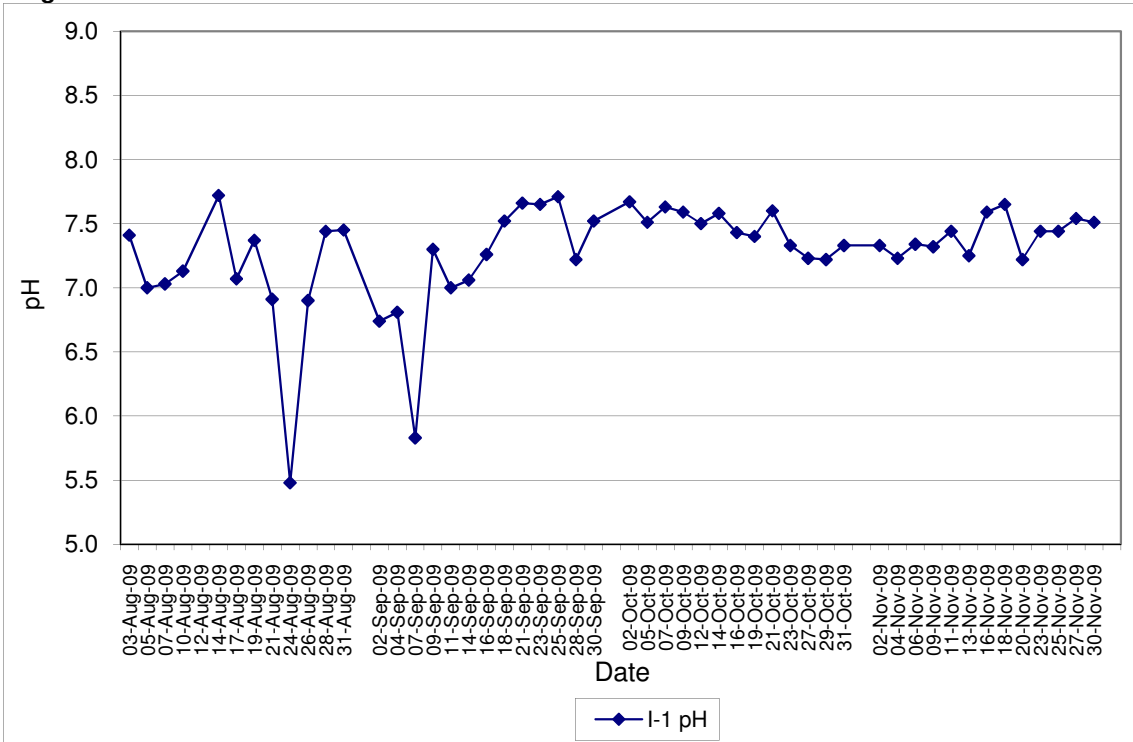
Note: Exceedances of Action / Limit Levels occur when the levels of DO are below the respective limit levels.



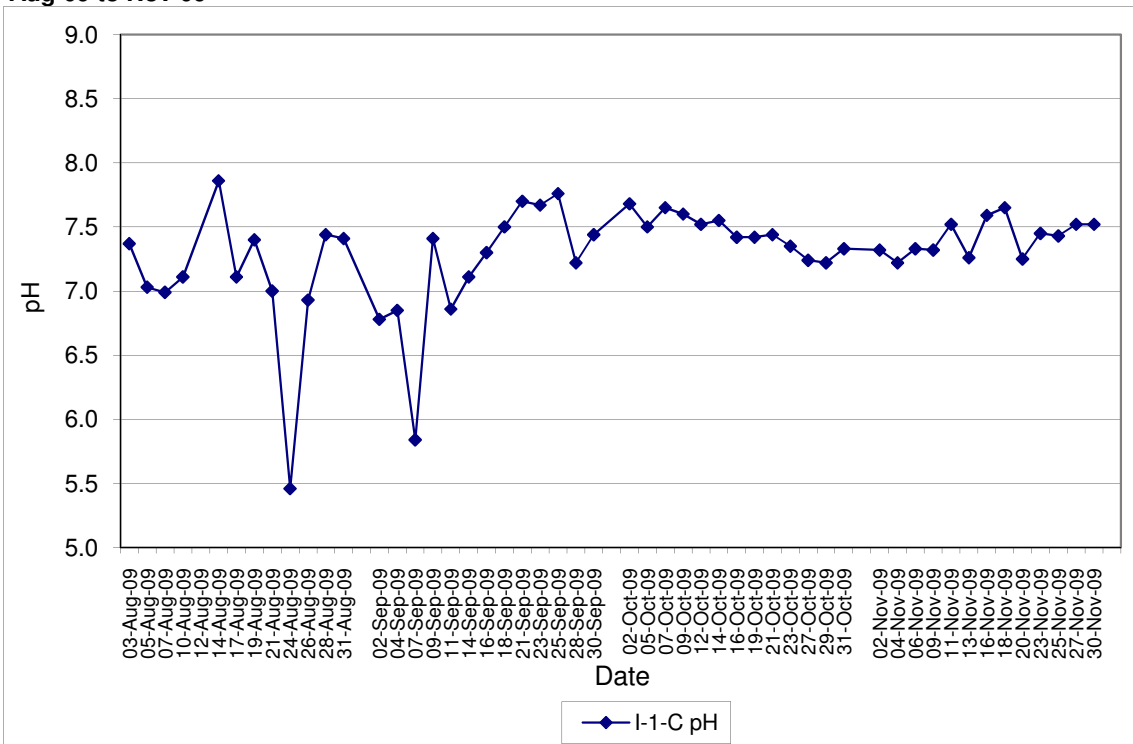
Contract No. DC/2007/12 - Design and Construction of Tsuen Wan Drainage Tunnel
Water Quality Results at Squatters (I-3-C)
Aug-09 to Nov-09



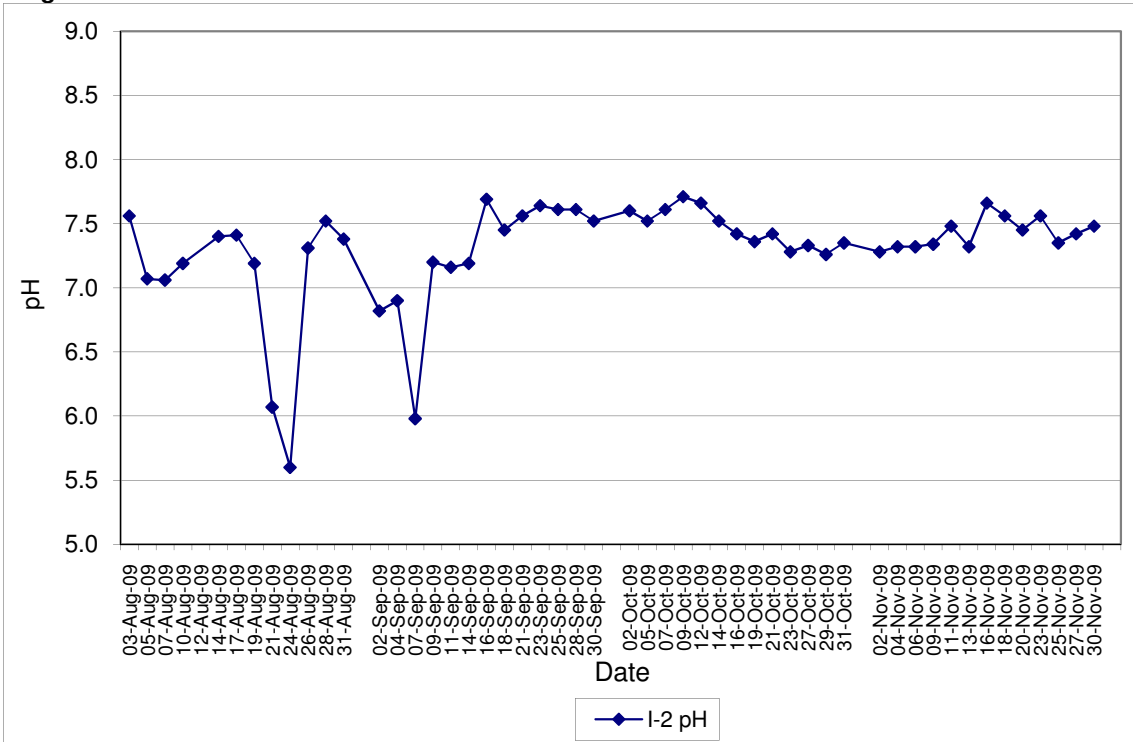
**Contract No. DC/2007/12 - Design and Construction of Tsuen Wan Drainage Tunnel
 Water Quality Results at Sik Sik Yuen Ho Fung College (I-1)
 Aug-09 to Nov-09**



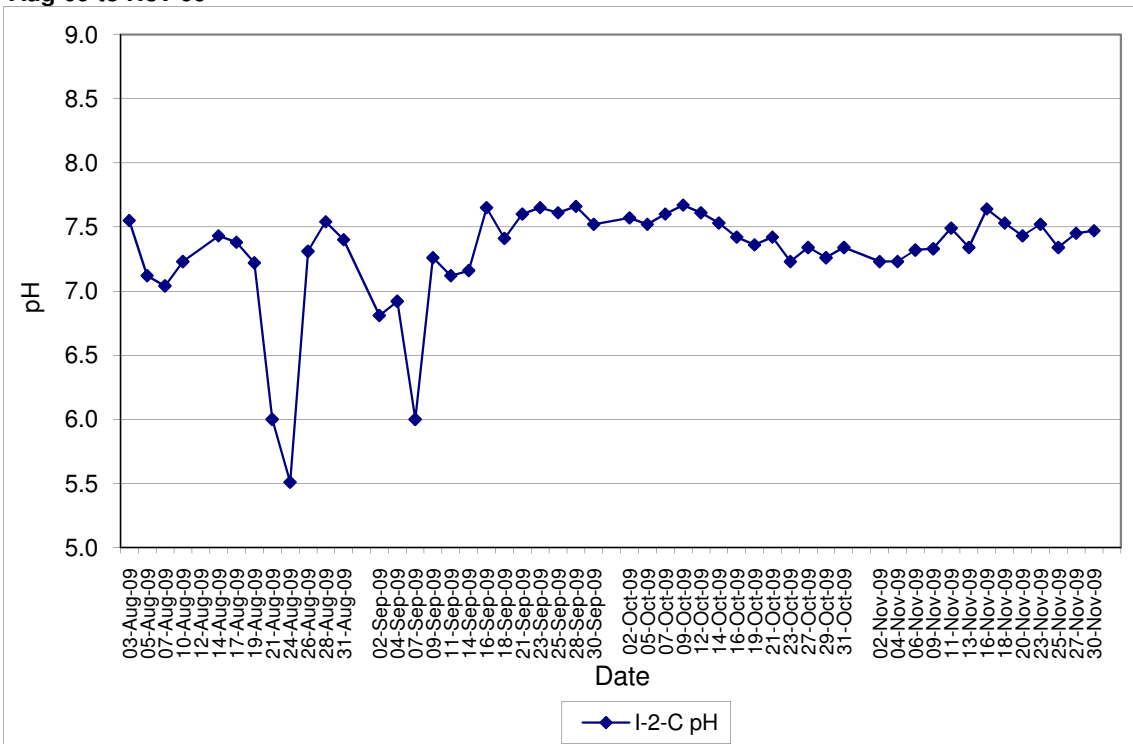
**Contract No. DC/2007/12 - Design and Construction of Tsuen Wan Drainage Tunnel
 Water Quality Results at Sik Sik Yuen Ho Fung College (I-1-C)
 Aug-09 to Nov-09**



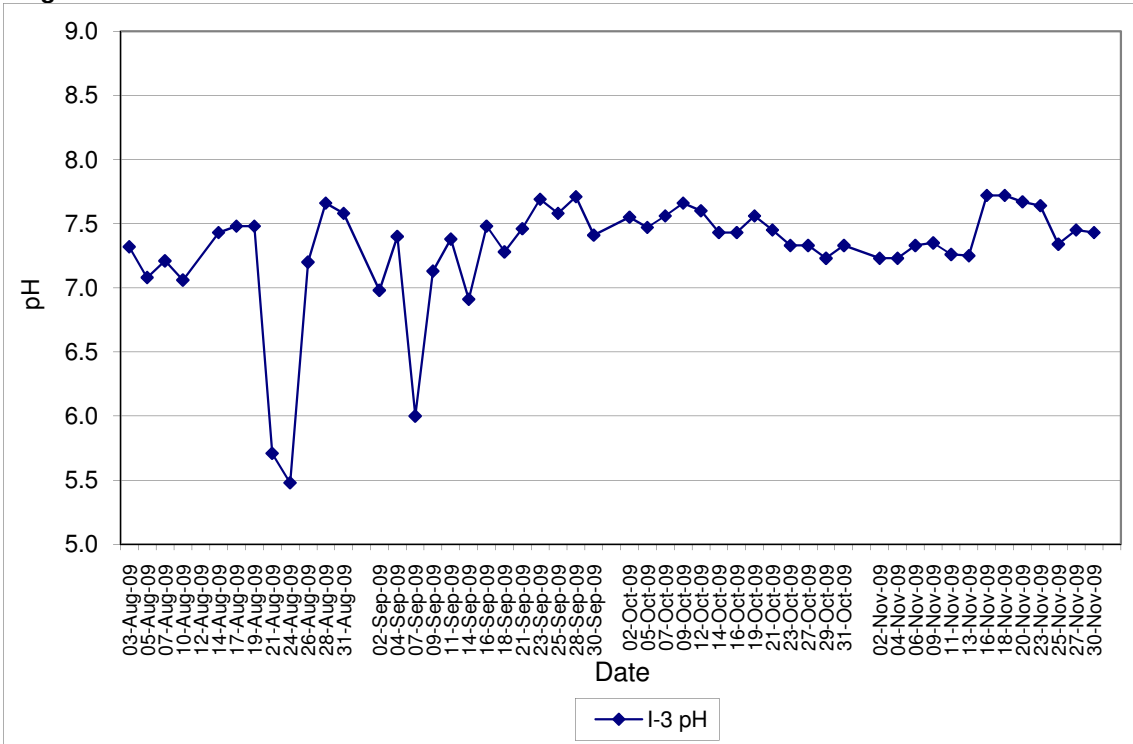
**Contract No. DC/2007/12 - Design and Construction of Tsuen Wan Drainage Tunnel
 Water Quality Results at Hong Hoi Chee Hong Temple (I-2)
 Aug-09 to Nov-09**



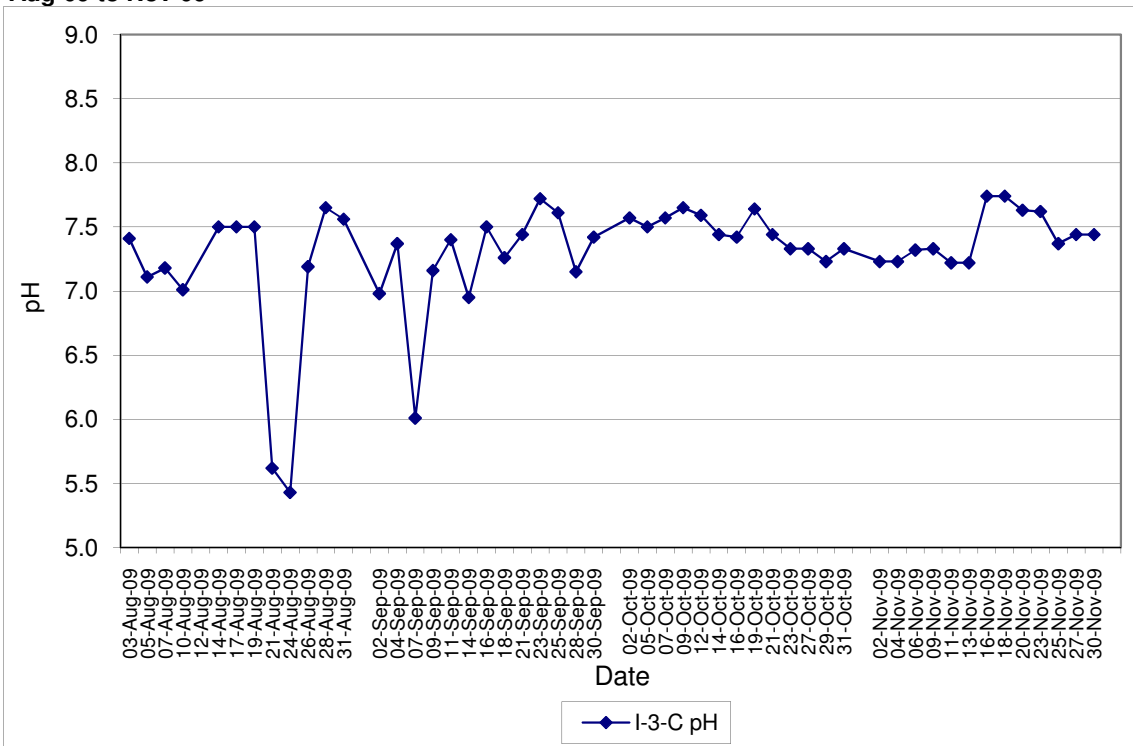
**Contract No. DC/2007/12 - Design and Construction of Tsuen Wan Drainage Tunnel
 Water Quality Results at Hong Hoi Chee Hong Temple (I-2-C)
 Aug-09 to Nov-09**



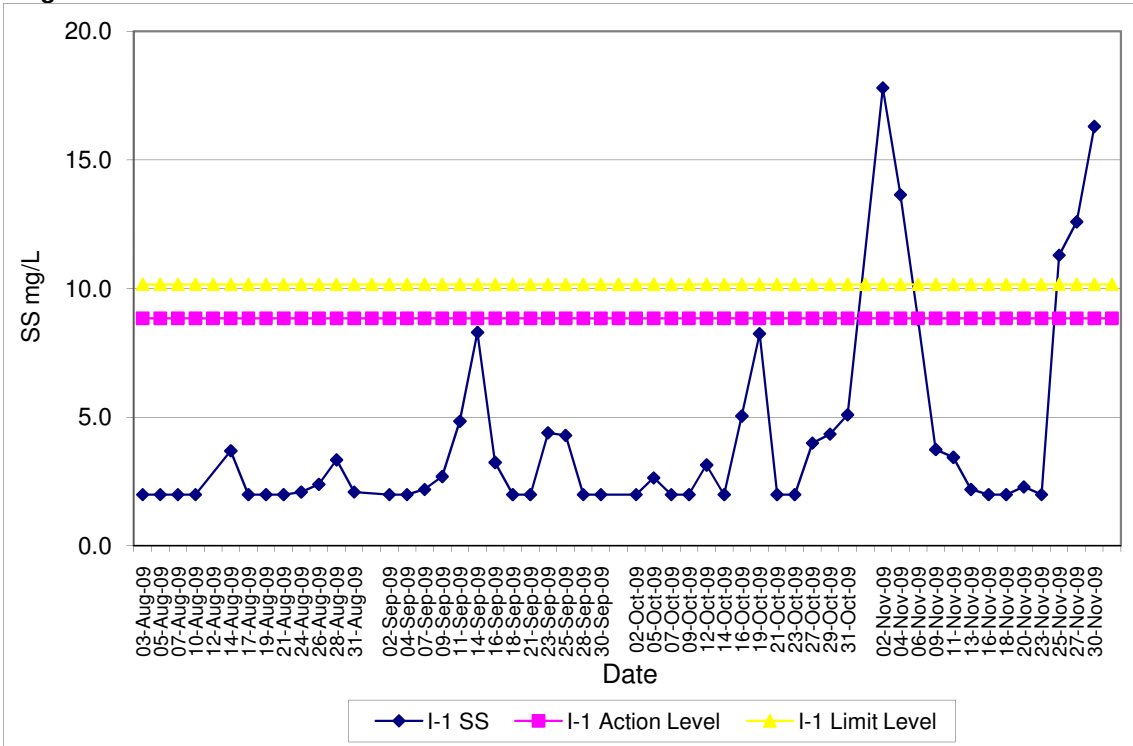
**Contract No. DC/2007/12 - Design and Construction of Tsuen Wan Drainage Tunnel
 Water Quality Results at Squatters (I-3)
 Aug-09 to Nov-09**



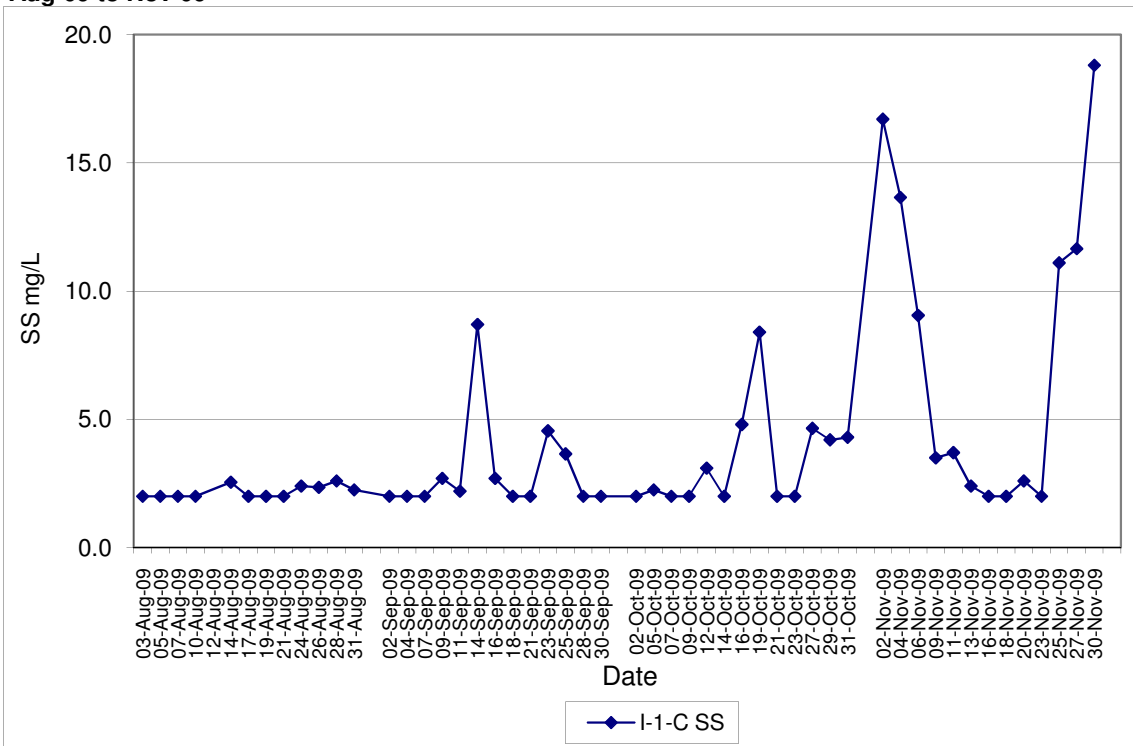
**Contract No. DC/2007/12 - Design and Construction of Tsuen Wan Drainage Tunnel
 Water Quality Results at Squatters (I-3-C)
 Aug-09 to Nov-09**



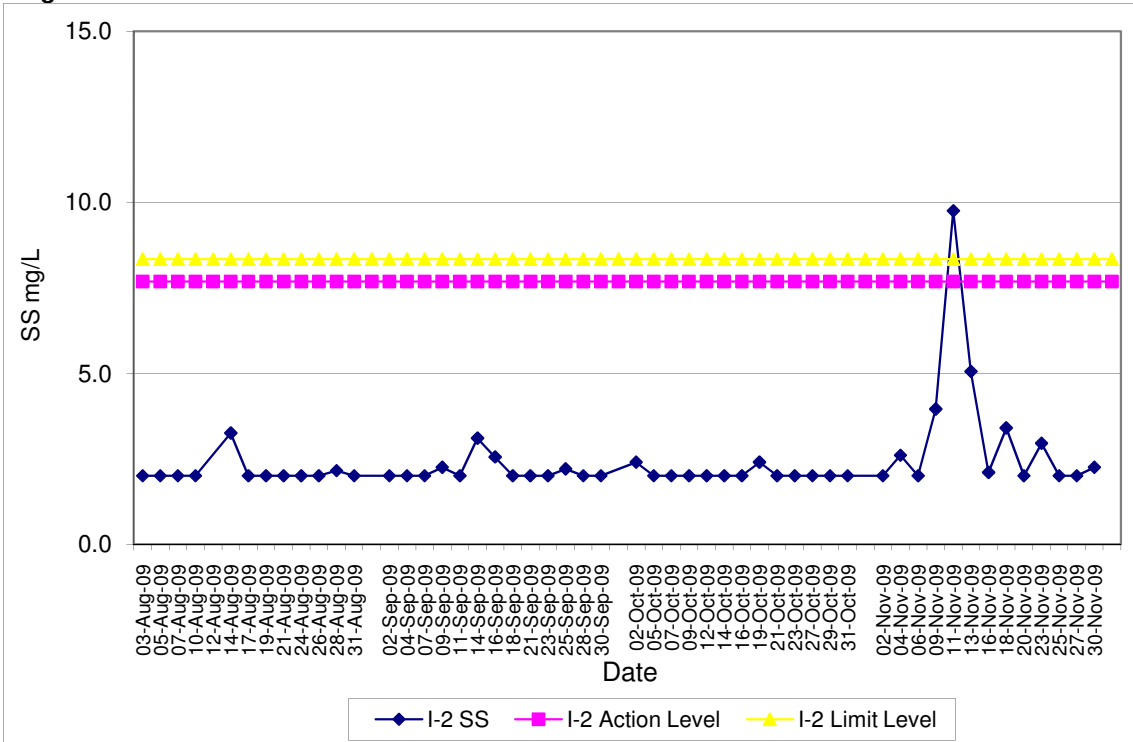
Contract No. DC/2007/12 - Design and Construction of Tsuen Wan Drainage Tunnel
Water Quality Results at Sik Sik Yuen Ho Fung College (I-1)
Aug-09 to Nov-09



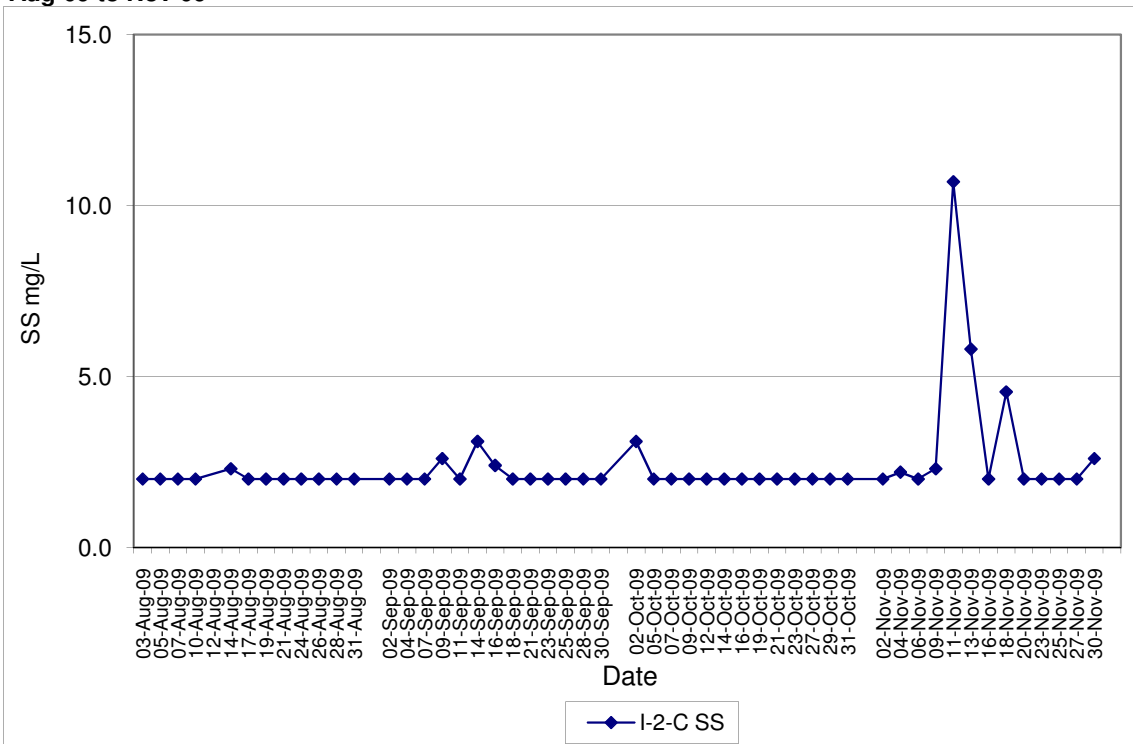
Contract No. DC/2007/12 - Design and Construction of Tsuen Wan Drainage Tunnel
Water Quality Results at Sik Sik Yuen Ho Fung College (I-1-C)
Aug-09 to Nov-09



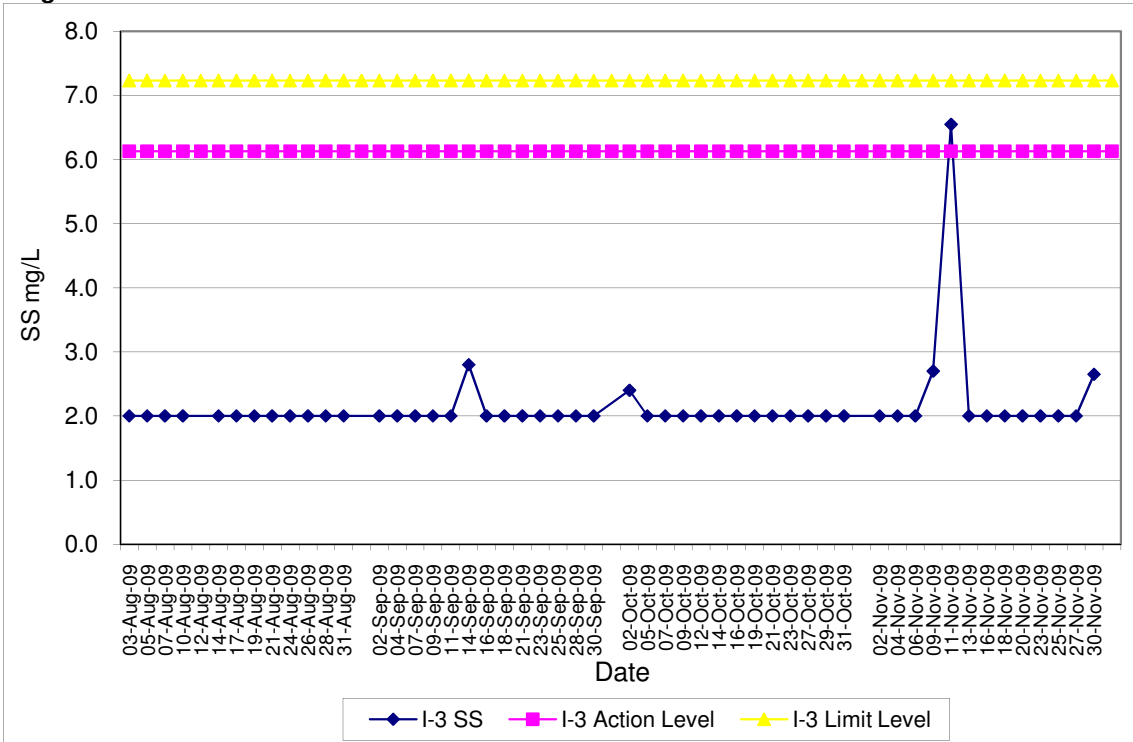
Contract No. DC/2007/12 - Design and Construction of Tsuen Wan Drainage Tunnel
Water Quality Results at Hong Hoi Chee Hong Temple (I-2)
Aug-09 to Nov-09



Contract No. DC/2007/12 - Design and Construction of Tsuen Wan Drainage Tunnel
Water Quality Results at Hong Hoi Chee Hong Temple (I-2-C)
Aug-09 to Nov-09



**Contract No. DC/2007/12 - Design and Construction of Tsuen Wan Drainage Tunnel
Water Quality Results at Squatters (I-3)
Aug-09 to Nov-09**



**Contract No. DC/2007/12 - Design and Construction of Tsuen Wan Drainage Tunnel
Water Quality Results at Squatters (I-3-C)
Aug-09 to Nov-09**

