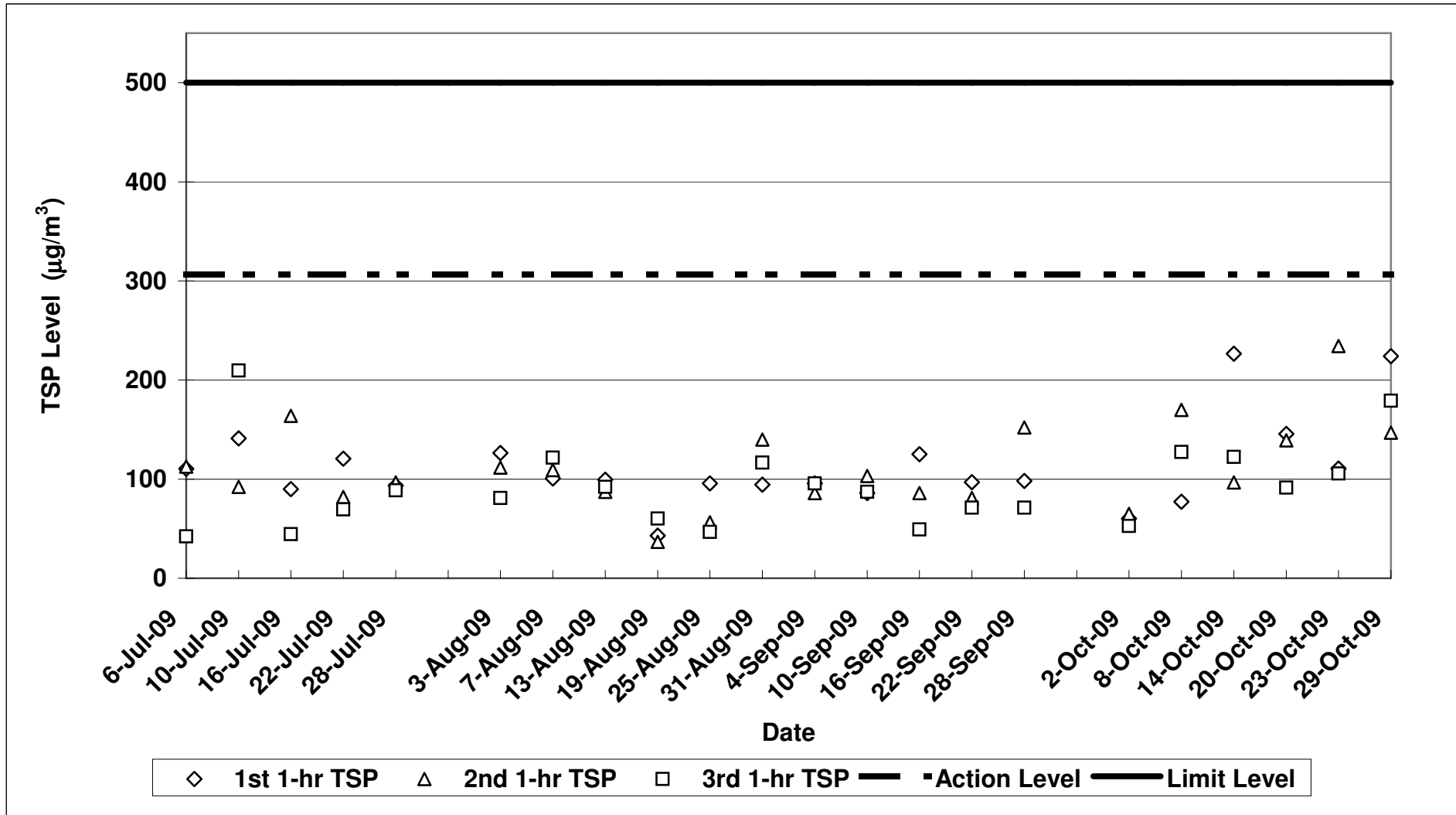


Contract No. DC/2007/12 - Design and Construction of Tsuen Wan Drainage Tunnel

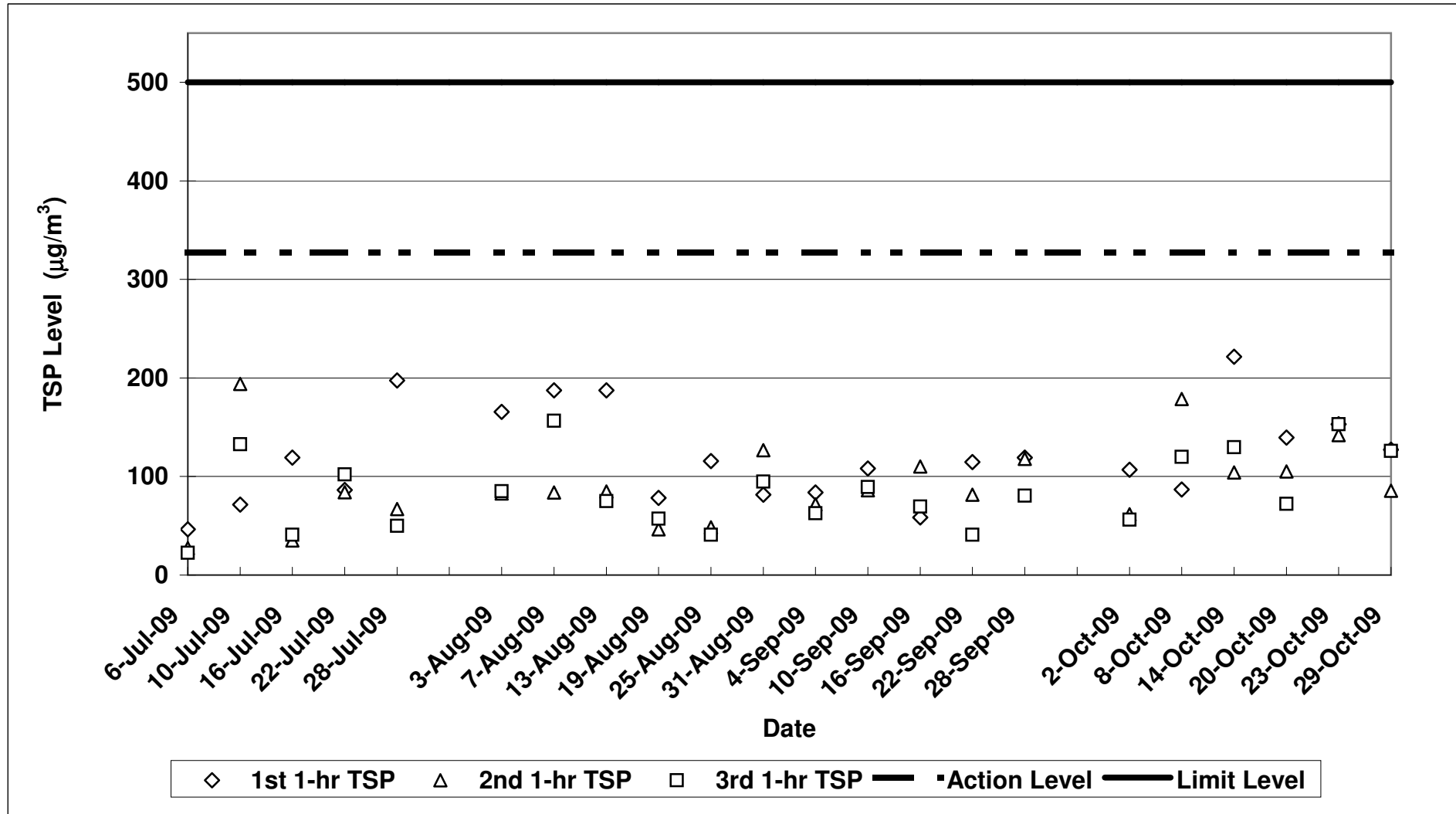
Air Quality Impact Monitoring Results (1-Hour TSP)

Location	Monitoring Date	Weather Conditions	Wind Speed with Direction (m/s)	Temp (°C)	Timer-I (mins)	Timer-F (mins)	Time (mins)	Flow-I (CFM)	Flow-F (CFM)	Flow-I (m ³ /min)	Flow-F (m ³ /min)	Flow-avg (m ³ /min)	Volume (m ³)	Weight-I (g)	Weight-F (g)	Weight-diff. (g)	1-hr TSP (µg/m ³)	Average 1-Hr TSP (µg/m ³)	Action/Limit Levels (µg/m ³)	Observation / Site Condition	Remark
Sik Sik Yuen Ho Fung College - Intake (ASR1)	02-Oct-09	Sunny	0.2E	27	581842	581942	60.0	40	40	1.36	1.36	1.36	81.47	2.8501	2.8550	0.0049	60.1	59.3	Nil	Nil	
		Sunny	0.2E	27	581942	582042	60.0	40	40	1.36	1.36	1.36	81.47	2.8668	2.8721	0.0053	65.1				
		Sunny	0.2E	27	582042	582142	60.0	40	40	1.36	1.36	1.36	81.47	2.8801	2.8844	0.0043	52.8				
	08-Oct-09	Sunny	0.5E	26	582242	582342	60.0	40	40	1.29	1.29	1.29	77.66	2.8710	2.8770	0.0060	77.3	124.9	Excavation work	Traffic	
		Sunny	0.5E	26	582342	582442	60.0	40	40	1.29	1.29	1.29	77.66	2.8690	2.8739	0.0039	127.5				
		Cloudy	0.3E	26	582442	582542	60.0	40	40	1.29	1.29	1.29	77.66	2.8481	2.8657	0.0176	226.6				
	14-Oct-09	Cloudy	0.3E	26	582542	582642	60.0	40	40	1.29	1.29	1.29	77.66	2.8417	2.8492	0.0075	96.6	148.5	Breaking by backhoe,excavation work	Traffic	
		Cloudy	0.3E	26	582642	582742	60.0	40	40	1.29	1.29	1.29	77.66	2.8679	2.8774	0.0095	122.3				
		Cloudy	0.6E	26	582742	582842	60.0	40	40	1.29	1.29	1.29	77.66	2.8572	2.8685	0.0113	145.5				
	20-Oct-09	Cloudy	0.6E	26	582842	582942	60.0	40	40	1.29	1.29	1.29	77.66	2.8650	2.8758	0.0108	139.1	125.3	Breaking by backhoe,excavation work	Traffic	
		Cloudy	0.6E	26	582942	583042	60.0	40	40	1.29	1.29	1.29	77.66	2.8121	2.8192	0.0071	91.4				
		Fine	0.3E	26	583042	583142	60.0	40	40	1.29	1.29	1.29	77.66	2.8578	2.8654	0.0086	110.7				
23-Oct-09	Fine	0.3E	26	583142	583242	60.0	40	40	1.29	1.29	1.29	77.66	2.8574	2.8756	0.0182	234.4	150.2	Breaking by backhoe,excavation work	Traffic		
	Fine	0.3E	26	583242	583342	60.0	40	40	1.29	1.29	1.29	77.66	2.8512	2.8594	0.0082	105.6					
	Sunny	0.7E	25	583342	583442	60.0	40	40	1.29	1.29	1.29	77.66	2.8298	2.8472	0.0174	224.1					
29-Oct-09	Sunny	0.7E	25	583442	583542	60.0	40	40	1.29	1.29	1.29	77.66	2.7746	2.7860	0.0114	146.8	183.3	Breaking by backhoe,excavation work	Traffic		
	Sunny	0.7E	25	583542	583642	60.0	40	40	1.29	1.29	1.29	77.66	2.8536	2.8675	0.0139	179.0					
	Sunny	0.3E	27	550390	550490	60.0	40	40	1.51	1.51	1.51	90.71	2.8514	2.8611	0.0097	106.9					
02-Oct-09	Sunny	0.3E	27	550490	550590	60.0	40	40	1.51	1.51	1.51	90.71	2.8281	2.8337	0.0056	61.7	75.0	Nil	Nil		
	Sunny	0.3E	27	550590	550690	60.0	40	40	1.51	1.51	1.51	90.71	2.7973	2.8024	0.0051	56.2					
	Sunny	0.4E	26	550690	550790	60.0	40	40	1.36	1.36	1.36	81.72	2.8320	2.8391	0.0071	86.9					
08-Oct-09	Sunny	0.4E	26	550790	550890	60.0	40	40	1.36	1.36	1.36	81.72	2.8798	2.8944	0.0146	178.7	128.5	Drilling and Cutting work	Traffic		
	Sunny	0.4E	26	550890	550990	60.0	40	40	1.36	1.36	1.36	81.72	2.8683	2.8781	0.0098	119.9					
	Cloudy	0.2E	26	550990	551090	60.0	40	40	1.36	1.36	1.36	81.72	2.8555	2.8736	0.0181	221.5					
14-Oct-09	Cloudy	0.2E	26	551090	551190	60.0	40	40	1.36	1.36	1.36	81.72	2.8540	2.8625	0.0085	104.0	151.7	Hammering, cutting work	Traffic		
	Cloudy	0.2E	26	551190	551290	60.0	40	40	1.36	1.36	1.36	81.72	2.8720	2.8826	0.0106	129.7					
	Cloudy	0.8E	26	551290	551390	60.0	40	40	1.36	1.36	1.36	81.72	2.8890	2.9004	0.0114	139.5					
20-Oct-09	Cloudy	0.8E	26	551390	551490	60.0	40	40	1.36	1.36	1.36	81.72	2.8534	2.8620	0.0086	105.2	105.6	Hammering	Traffic		
	Cloudy	0.8E	26	551490	551590	60.0	40	40	1.36	1.36	1.36	81.72	2.8392	2.8451	0.0059	72.2					
	Fine	0.8E	26	551590	551690	60.0	40	40	1.36	1.36	1.36	81.72	2.8238	2.8363	0.0125	153.0					
23-Oct-09	Fine	0.8E	26	551690	551790	60.0	40	40	1.36	1.36	1.36	81.72	2.8983	2.9079	0.0116	142.0	149.3	Nil	Traffic		
	Fine	0.8E	26	551790	551890	60.0	40	40	1.36	1.36	1.36	81.72	2.8762	2.8887	0.0125	153.0					
	Sunny	0.5E	25	551890	551990	60.0	40	40	1.36	1.36	1.36	81.72	2.8682	2.8786	0.0104	127.3					
29-Oct-09	Sunny	0.5E	25	551990	552090	60.0	40	40	1.36	1.36	1.36	81.72	2.8704	2.8774	0.0070	85.7	113.0	Cutting	Traffic		
	Sunny	0.5E	25	552090	552190	60.0	40	40	1.36	1.36	1.36	81.72	2.8373	2.8476	0.0103	126.0					
	Sunny	0.5E	27	605380	605480	60.0	40	40	1.24	1.24	1.24	74.14	2.8076	2.8122	0.0046	62.0					
02-Oct-09	Sunny	0.5E	27	605480	605580	60.0	40	40	1.24	1.24	1.24	74.14	2.8171	2.8225	0.0054	72.9	70.6	Nil	Nil		
	Sunny	0.5E	27	605580	605680	60.0	40	40	1.24	1.24	1.24	74.14	2.8350	2.8407	0.0057	76.9					
	Sunny	0.5E	26	605680	605780	60.0	40	40	1.29	1.29	1.29	77.48	2.8890	2.899	0.0100	129.1					
08-Oct-09	Sunny	0.5E	26	605780	605880	60.0	40	40	1.29	1.29	1.29	77.48	2.9028	2.9141	0.0113	145.9	131.7	Breaking by backhoe,excavation work	Traffic		
	Sunny	0.5E	26	605880	605980	60.0	40	40	1.29	1.29	1.29	77.48	2.8258	2.8351	0.0093	120.0					
	Cloudy	0.5E	26	605980	606080	60.0	40	40	1.29	1.29	1.29	77.48	2.8448	2.8588	0.0140	180.7					
14-Oct-09	Cloudy	0.5E	26	606080	606180	60.0	40	40	1.29	1.29	1.29	77.48	2.8542	2.8658	0.0116	149.7	140.7	Breaking by backhoe,excavation work	Traffic		
	Cloudy	0.5E	26	606180	606280	60.0	40	40	1.29	1.29	1.29	77.48	2.8355	2.8426	0.0071	91.6					
	Cloudy	1.0E	26	606280	606380	60.0	40	40	1.29	1.29	1.29	77.48	2.8848	2.8920	0.0072	92.9					
20-Oct-09	Cloudy	1.0E	26	606380	606480	60.0	40	40	1.29	1.29	1.29	77.48	2.8521	2.8660	0.0139	179.4	119.2	Breaking by backhoe,excavation work	Traffic		
	Cloudy	1.0E	26	606480	606580	60.0	40	40	1.29	1.29	1.29	77.48	2.8924	2.8990	0.0066	85.2					
	Fine	1.0E	26	606580	606680	60.0	40	40	1.29	1.29	1.29	77.48	2.8810	2.8908	0.0098	126.5					
23-Oct-09	Fine	1.0E	26	606680	606780	60.0	40	40	1.29	1.29	1.29	77.48	2.8462	2.8597	0.0135	174.2	149.3	Breaking by backhoe,excavation work	Traffic		
	Fine	1.0E	26	606780	606880	60.0	40	40	1.29	1.29	1.29	77.48	2.8304	2.8448	0.0144	147.1					
	Sunny	0.8E	25	606880	606980	60.0	40	40	1.29	1.29	1.29	77.48	2.8305	2.8511	0.0206	265.9					
29-Oct-09	Sunny	0.8E	25	606980	607080	60.0	40	40	1.29	1.29	1.29	77.48	2.8570	2.8679	0.0109	140.7	191.9	Excavation work	Traffic		
	Sunny	0.8E	25	607080	607180	60.0	40	40	1.29	1.29	1.29	77.48	2.8734	2.8865	0.0131	169.1					
	Sunny	0.3E	27	537280	537380	60.0	40	40	1.44	1.44	1.44	86.44	2.8813	2.8870	0.0057	65.9					
02-Oct-09	Sunny	0.3E	27	537380	537480	60.0	40	40	1.44	1.44	1.44	86.44	2.8967	2.8918	0.0051	59.0	60.9	Nil	Nil		
	Sunny	0.3E	27	537480	537580	60.0	40	40	1.44	1.44	1.44	86.44	2.8445	2.8495	0.0050	57.8					
	Sunny	0.6E	26	537580	537680	60.0	40	40	1.22	1.22	1.22	73.45	2.8205	2.8300	0.0095	128.3					
08-Oct-09	Sunny	0.6E	26	537680	537780	60.0	40	40	1.22	1.22	1.22	73.45	2.8831	2.8925	0.0094	128.0	125.7	Breaking by backhoe, excavation work	Traffic		
	Sunny	0.6E	26	537780	537880	60.0	40	40	1.22	1.22	1.22	73.45	2.8520	2.8608	0.0088	119.8					
	Cloudy	0.5E	26	537880	537980	60.0	40	40	1.22	1.22	1.22	73.45	2.8602	2.8746	0.0144	196.1					
14-Oct-09	Cloudy	0.5E	26	537980	538080	60.0	40	40	1.22	1.22	1.22	73.45	2.8875	2.8957	0.0082	111.6	149.8	Breaking by backhoe, excavation work	Traffic		
	Cloudy	0.5E	26	538080	538180	60.0	40	40	1.22	1.22	1.22	73.45	2.8588	2.8692	0.0104	141.6					
	Cloudy	1.0E	26	538180	538280	60.0	40	40	1.22												

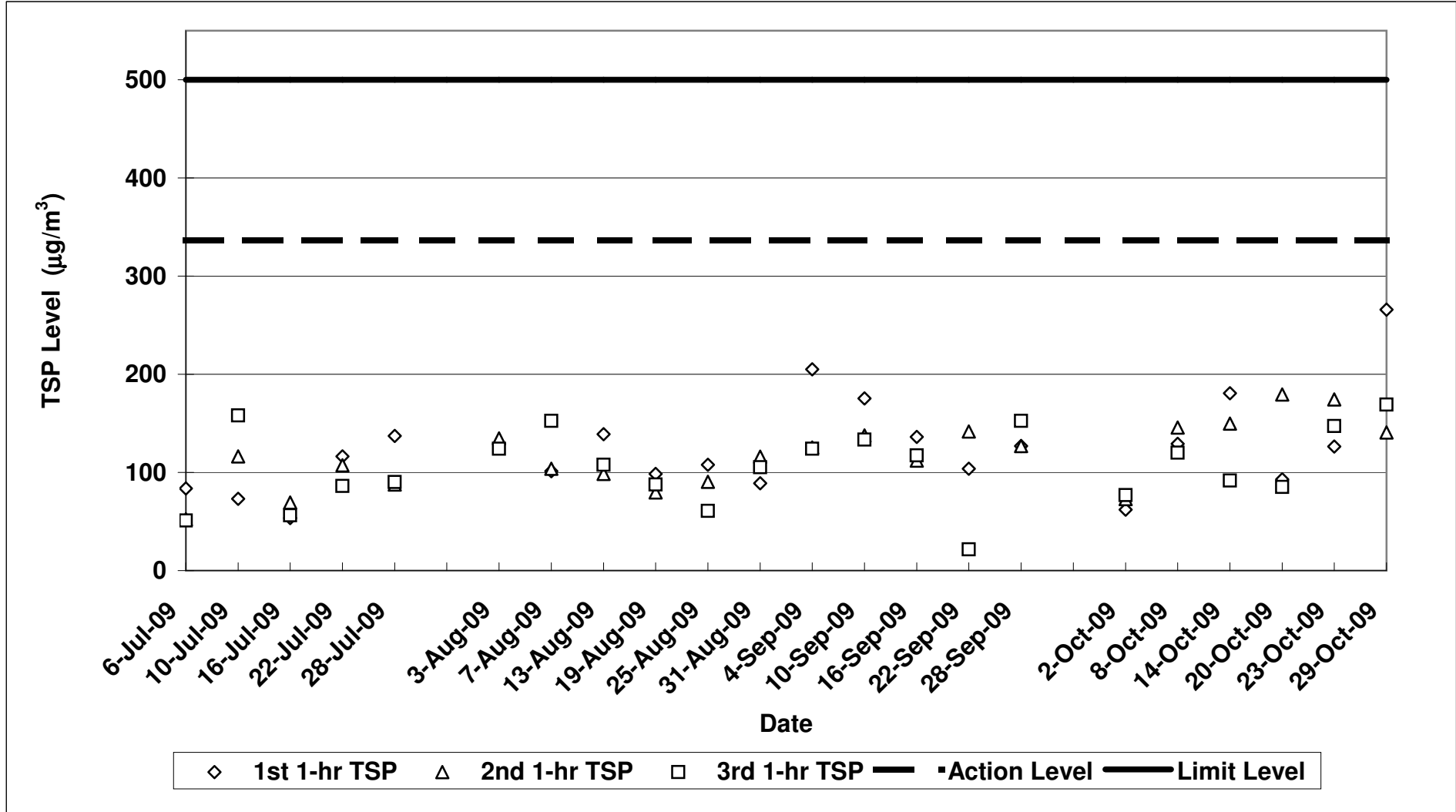
**Contract No. DC/2007/12 - Design and Construction of Tsuen Wan Drainage Tunnel
 Air Quality Monitoring (1-hr TSP) Results at Sik Sik Yuen Ho Fung College - Intake (ASR1)
 Jul-09 to Oct-09**



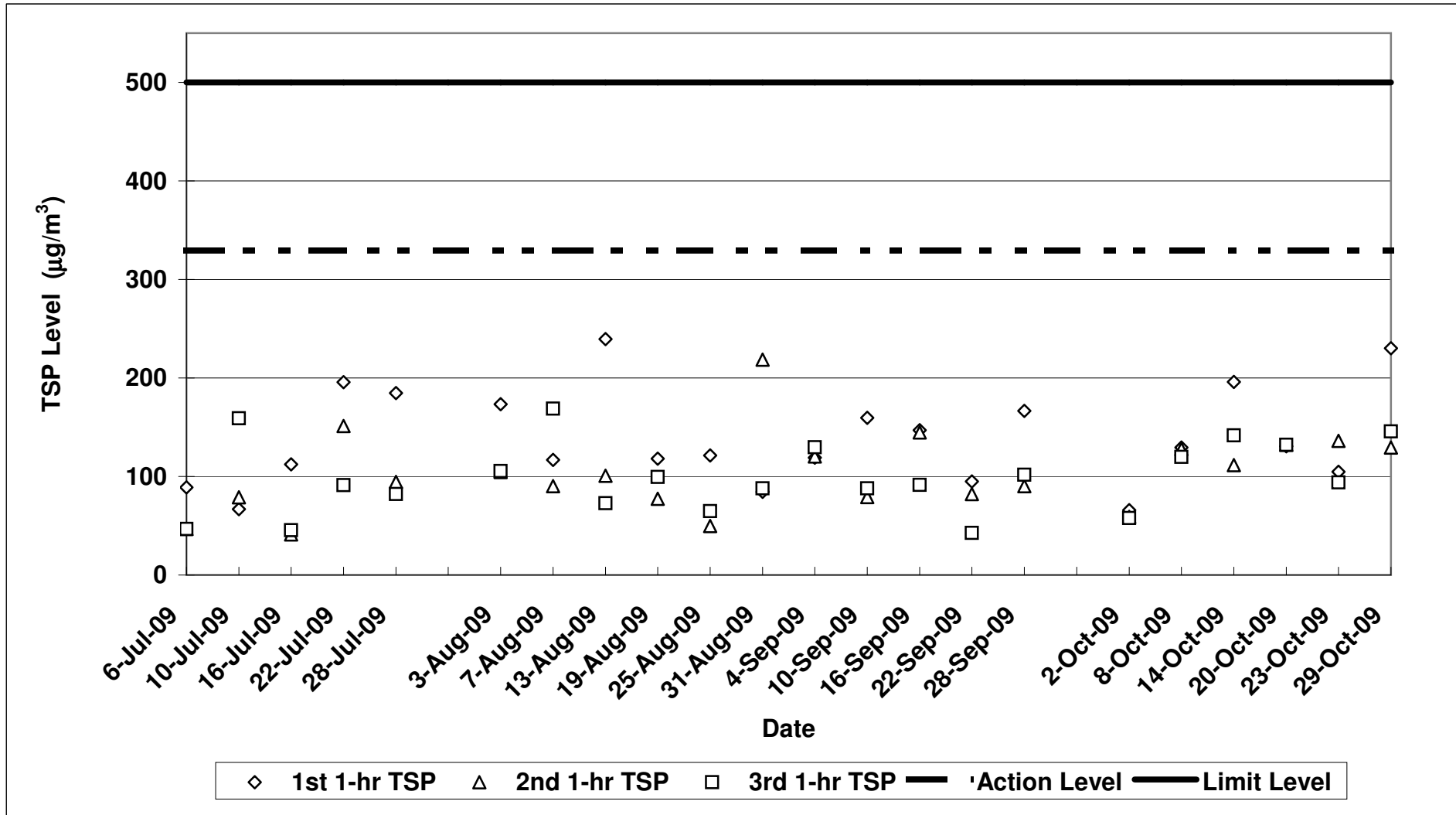
**Contract No. DC/2007/12 - Design and Construction of Tsuen Wan Drainage Tunnel
 Air Quality Monitoring (1-hr TSP) Results at Hong Hoi Chee Hong Temple - Intake (ASR3)
 Jul-09 to Oct-09**



**Contract No. DC/2007/12 - Design and Construction of Tsuen Wan Drainage Tunnel
 Air Quality Monitoring (1-hr TSP) Results at Long Beach Gardens - Outfall (ASR8)
 Jul-09 to Oct-09**



**Contract No. DC/2007/12 - Design and Construction of Tsuen Wan Drainage Tunnel
 Air Quality Monitoring (1-hr TSP) Results at Greenview Terrance - Outfall (ASR9)
 Jul-09 to Oct-09**



Contract No. DC/2007/12 - Design and Construction of Tsuen Wan Drainage Tunnel

Noise Impact Monitoring Results

Monitoring Locations	Date	Weather Conditions	Temperature (°C)	Wind Speed (m/s)	Wind Direction	Start Time	End Time	BL ¹ dB(A)	LL ²	L _{eq(30min)}	L _{10(30min)}	L _{90(30min)}	CNL ³ dB(A)	Observation / Site Condition	Remark
									dB(A)	dB(A)	dB(A)	dB(A)			
Sik Sik Yuen Ho Fung College NSR 1	08-Oct-09	Sunny	26	0.5	E	15:02	15:35	66.1	70	67.7	70.4	63.8	-	Excavation work	Traffic noise, aircraft noise
	14-Oct-09	Cloudy	26	0.3	E	15:58	16:28		70	64.9	67.4	60.7	-	Breaking by backhoe,excavation work	Traffic noise
	20-Oct-09	Cloudy	26	0.5	E	15:20	15:50		70	69.3	71.2	65.3	-	Breaking by backhoe,excavation work	Traffic noise
	29-Oct-09	Sunny	25	0.7	E	16:00	16:30		65	64.0	66.4	59.9	-	Breaking by backhoe,excavation work	Traffic noise
	-	-	-	-	-	-	-		-	-	-	-	-	-	-
Hong Hoi Chee Hong Temple NSR 3	08-Oct-09	Sunny	26	0.4	E	14:20	14:50	57.9	75	72.5	74.9	67.8	-	Drilling work, cutting noise	Traffic noise, aircraft noise
	14-Oct-09	Cloudy	26	0.2	E	15:17	15:47		75	68.4	70.8	64.6	-	Hammering, cutting work	Traffic noise
	20-Oct-09	Cloudy	26	0.5	E	14:38	15:08		75	62.1	63.7	60.9	-	Hammering	Traffic noise
	29-Oct-09	Sunny	25	0.5	E	15:20	15:50		75	62.6	64.6	60.9	-	Cutting	Traffic noise
	-	-	-	-	-	-	-		75	-	-	-	-	-	-
Squatters NSR 6	08-Oct-09	Sunny	26	0.3	E	13:30	14:00	61.2	75	53.0	57.4	46.1	-	Excavation work	Aircraft noise, bird noise
	14-Oct-09	Cloudy	26	0.3	E	13:00	13:30		75	58.4	61.3	52.9	-	Excavation work	Bird noise
	20-Oct-09	Cloudy	26	0.3	E	13:40	14:10		75	61.7	63.8	58.2	-	Excavation work, drilling	Bird noise
	29-Oct-09	Sunny	25	0.5	E	13:25	13:55		75	63.2	65.2	60.3	-	Drilling & excavation work	Bird noise
	-	-	-	-	-	-	-		-	-	-	-	-	-	-
Long Beach Gardens NSR8	02-Oct-09*	Sunny	27	0.5	E	10:30	11:00	60.9	75	66.2	68.2	63.1	-	Breaking by backhoe,excavation work	Traffic noise, aircraft noise
	06-Oct-09*	Sunny	26	0.8	E	10:50	11:20		75	68.0	71.2	61.7	-	Breaking by backhoe,excavation work	Traffic noise
	08-Oct-09	Sunny	26	0.5	E	10:20	10:50		75	66.8	69.2	62.8	-	Breaking by backhoe,excavation work	Traffic noise
	14-Oct-09	Cloudy	26	0.5	E	14:32	15:02		75	66.0	67.3	63.4	-	Breaking by backhoe,excavation work	Traffic noise
	16-Oct-09*	Sunny	26	0.5	E	16:02	16:32		75	66.6	68.9	62.5	-	Breaking by backhoe,excavation work	Traffic noise
	20-Oct-09	Cloudy	26	0.8	E	11:12	11:42		75	67.9	70.7	63.4	-	Breaking by backhoe,excavation work	Traffic noise
	29-Oct-09	Sunny	25	0.8	E	10:38	11:08		75	65.7	68.1	61.9	-	Excavation work	Traffic noise
	-	-	-	-	-	-	-		-	-	-	-	-	-	-
Greenview Terrace NSR9	02-Oct-09*	Sunny	27	0.3	E	09:40	10:10	59.7	75	73.7	76.4	68.5	-	Breaking by backhoe,excavation work, soil nailing	Traffic & aircraft noise, 14/F A (decoration)
	06-Oct-09*	Sunny	26	1.2	E	09:45	10:15		75	71.2	73.8	66.1	-	Breaking by backhoe,excavation work	Traffic & aircraft noise, 14/F A (decoration)
	08-Oct-09	Sunny	26	0.6	E	11:03	11:33		75	71.3	75.1	63.9	-	Breaking by backhoe,excavation work	Traffic noise, 14/F A (decoration)
	14-Oct-09	Cloudy	26	0.5	E	13:50	14:20		75	70.7	73.5	66.2	-	Breaking by backhoe,excavation work	Traffic noise
	16-Oct-09*	Sunny	26	0.6	E	14:32	15:02		75	71.8	74.8	66.6	-	Breaking by backhoe,excavation work	Traffic noise, 14/F A (decoration)
	20-Oct-09	Cloudy	26	1	E	10:30	11:00		75	72.5	75.2	67.2	-	Breaking by backhoe,excavation work	Traffic noise
	23-Oct-09*	Fine	26	1	E	09:15	09:45		75	72.0	74.7	67.5	-	Breaking by backhoe,excavation work	Traffic noise
	29-Oct-09	Sunny	25	0.8	E	09:55	10:25		75	63.2	65.4	60.9	-	Excavation work	Traffic noise
	31-Oct-09*	Sunny	25	1.1	E	15:01	15:31		75	67.6	69.9	63.7	-	Excavation work	Traffic noise, aircraft noise

1: Baseline Noise Level

2: Limit Level

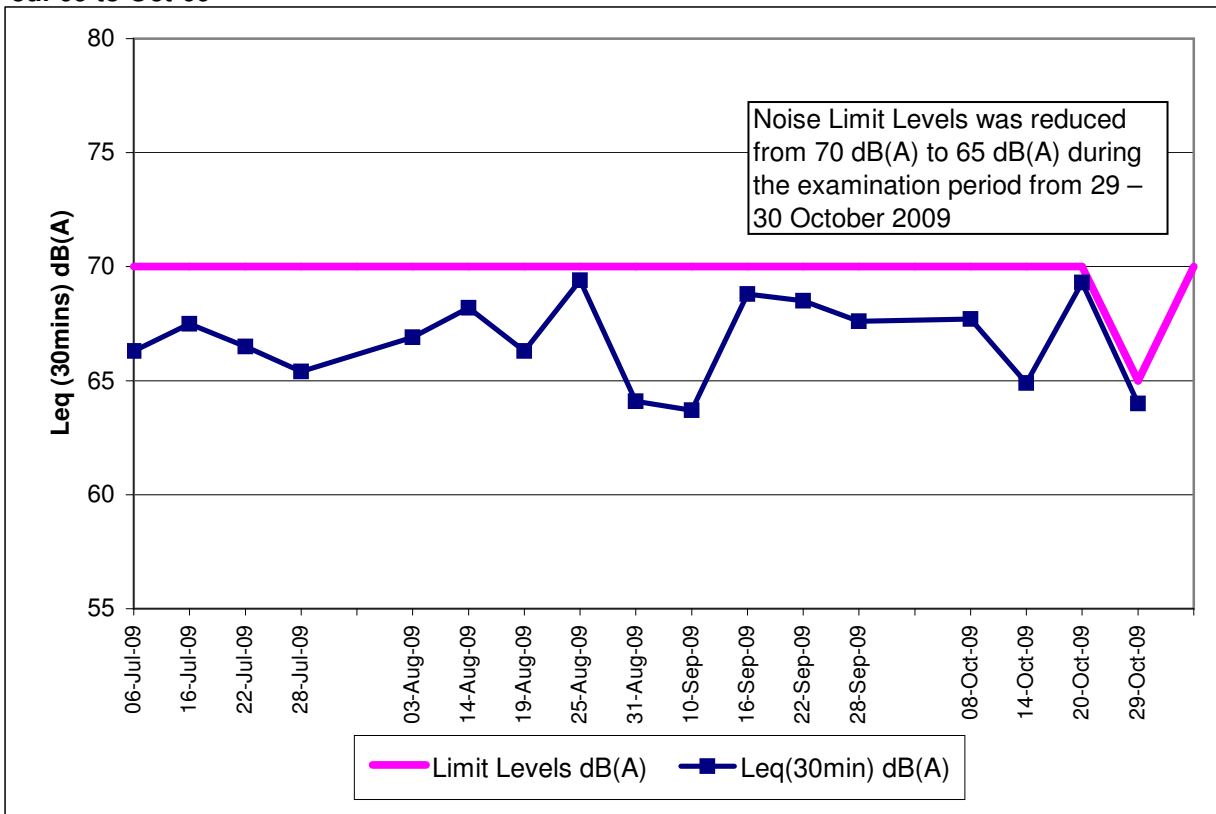
3: Corrected Noise Level

Note:

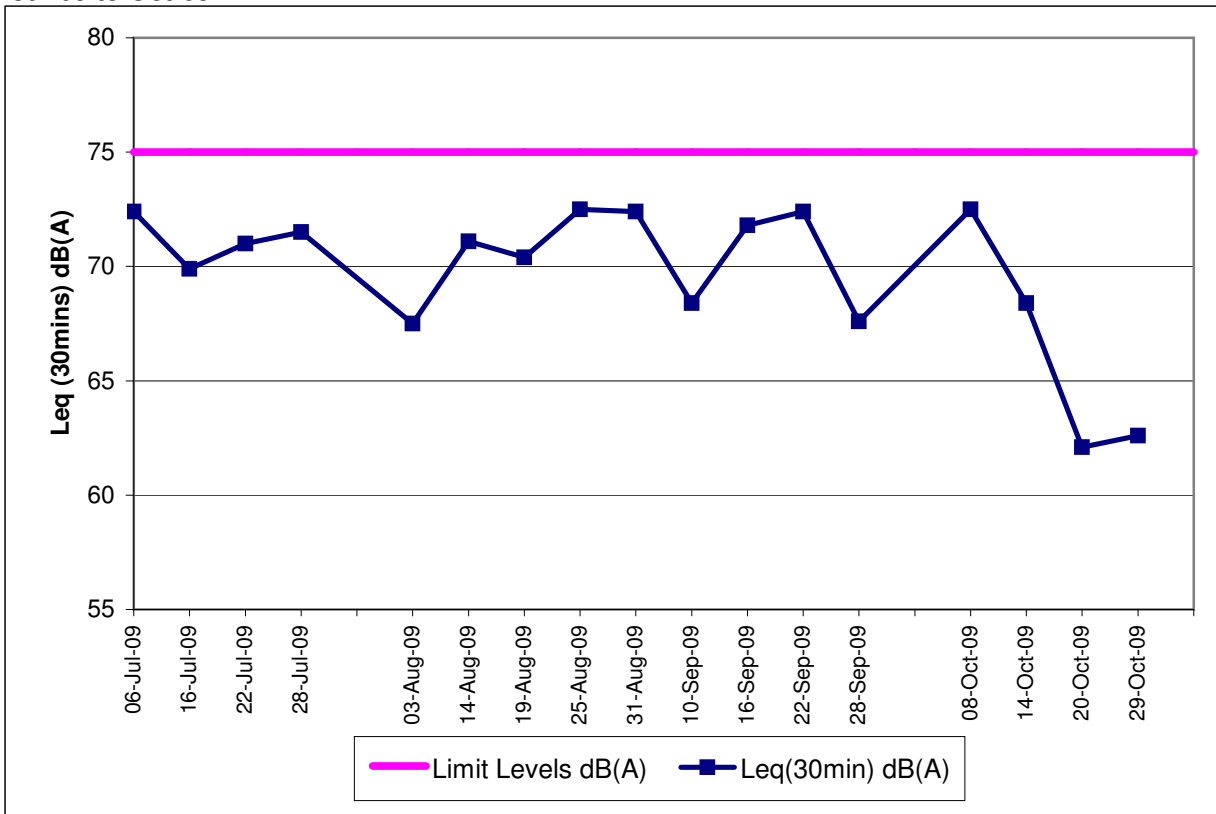
The limit level of NSR1 is 65dB(A) during school examination period.

Red Bold indicates an exceedance of Limit Level

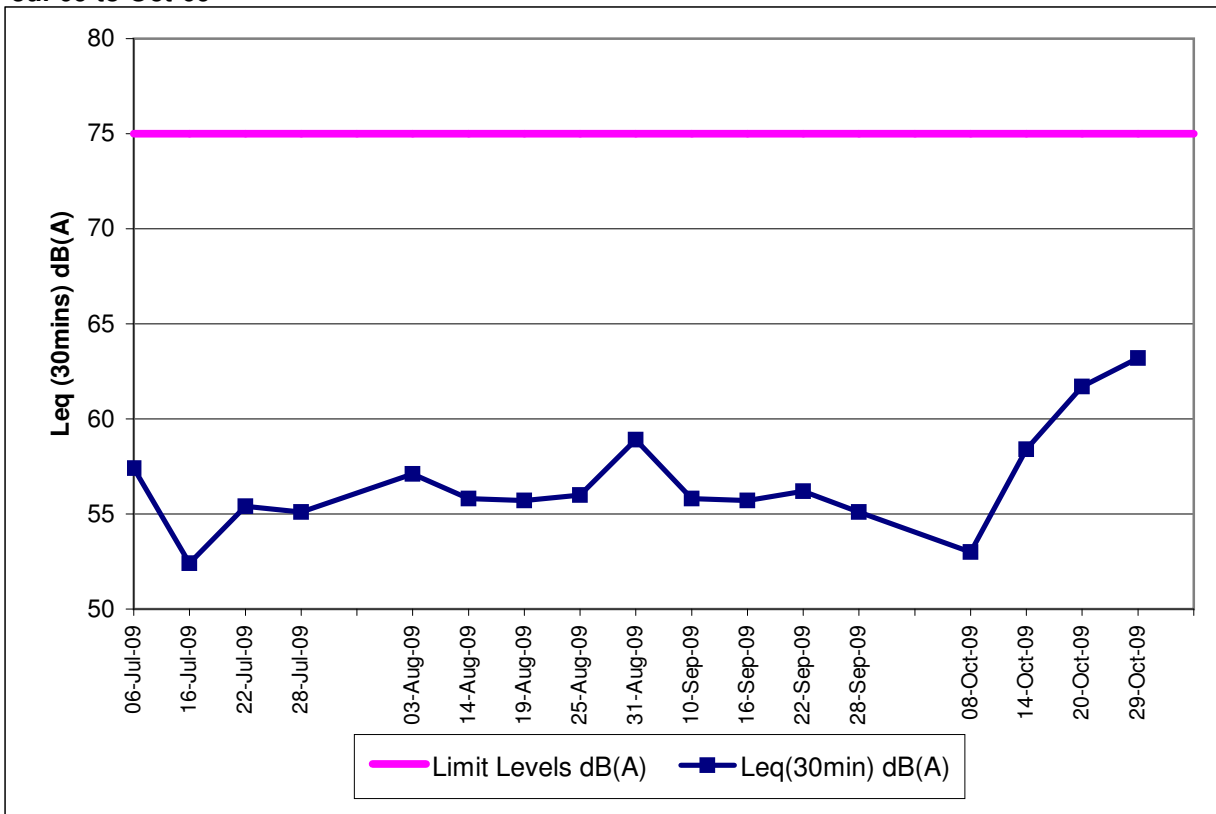
**Contract No. DC/2007/12 - Design and Construction of Tsuen Wan Drainage Tunnel
 Noise Monitoring Results at Sik Sik Yuen Ho Fung College (NSR 1)
 Jul-09 to Oct-09**



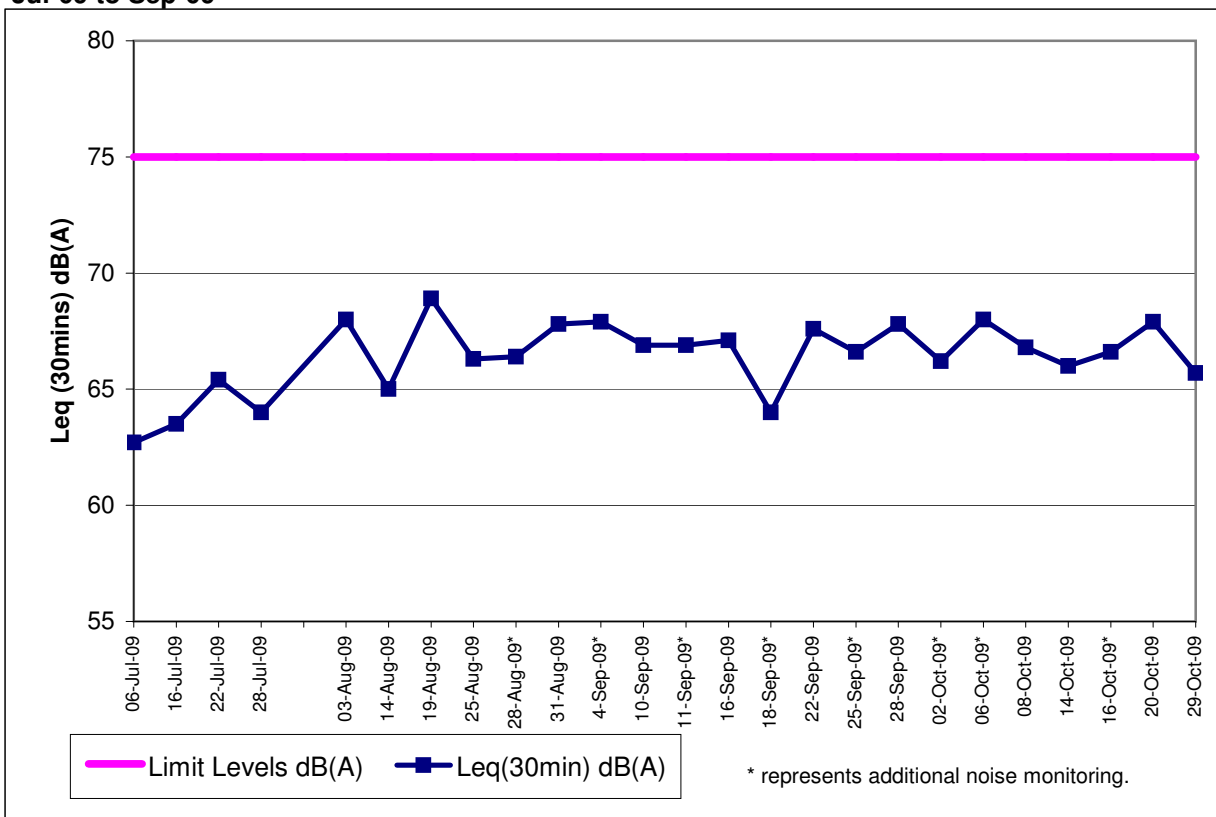
**Contract No. DC/2007/12 - Design and Construction of Tsuen Wan Drainage Tunnel
 Noise Monitoring Results at Hong Hoi Chee Hong Temple (NSR 3)
 Jul-09 to Oct-09**



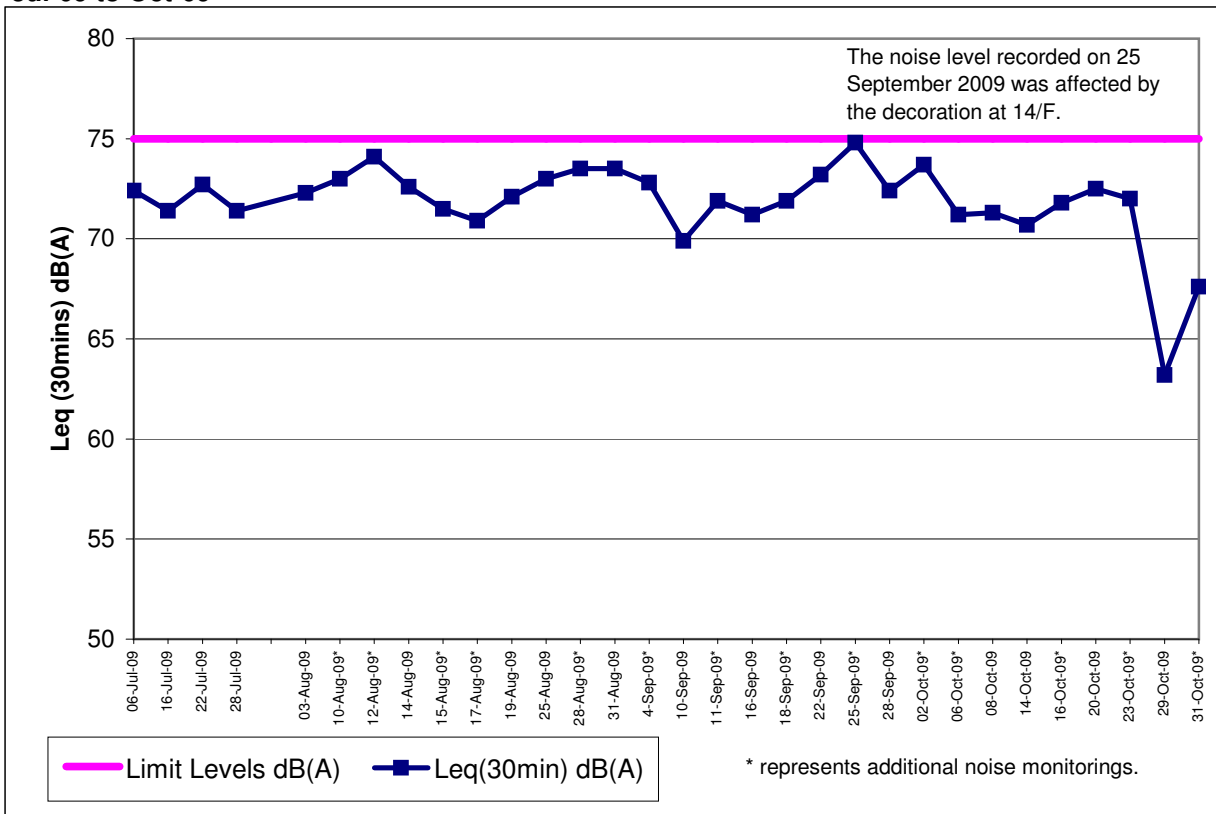
**Contract No. DC/2007/12 - Design and Construction of Tsuen Wan Drainage Tunnel
Noise Monitoring Results at Squatters (NSR 6)
Jul-09 to Oct-09**



**Contract No. DC/2007/12 - Design and Construction of Tsuen Wan Drainage Tunnel
Noise Monitoring Results at Long Beach Gardens (NSR 8)
Jul-09 to Sep-09**



**Contract No. DC/2007/12 - Design and Construction of Tsuen Wan Drainage Tunnel
 Noise Monitoring Results at (Greenview Terrace)
 Jul-09 to Oct-09**

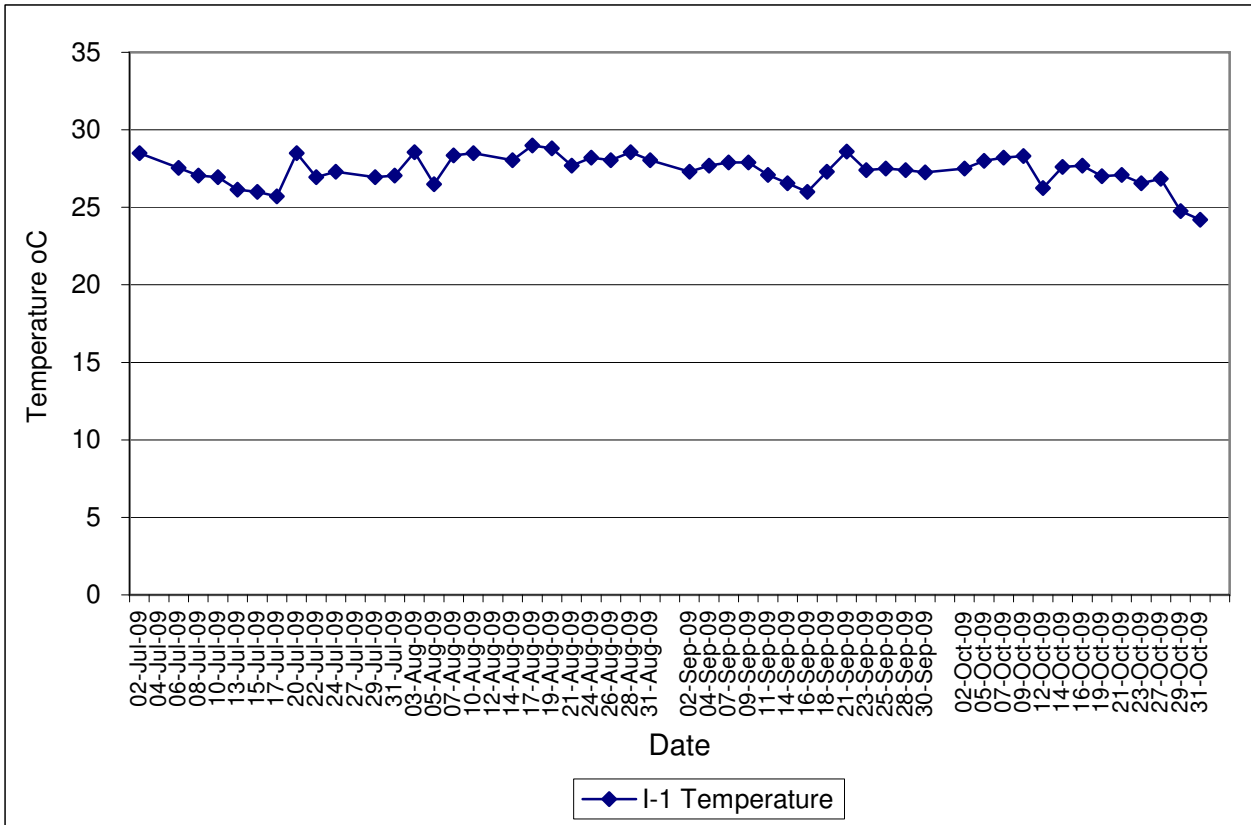


Contract No. DC/2007/12 - Design and Construction of Tsuen Wan Drainage Tunnel

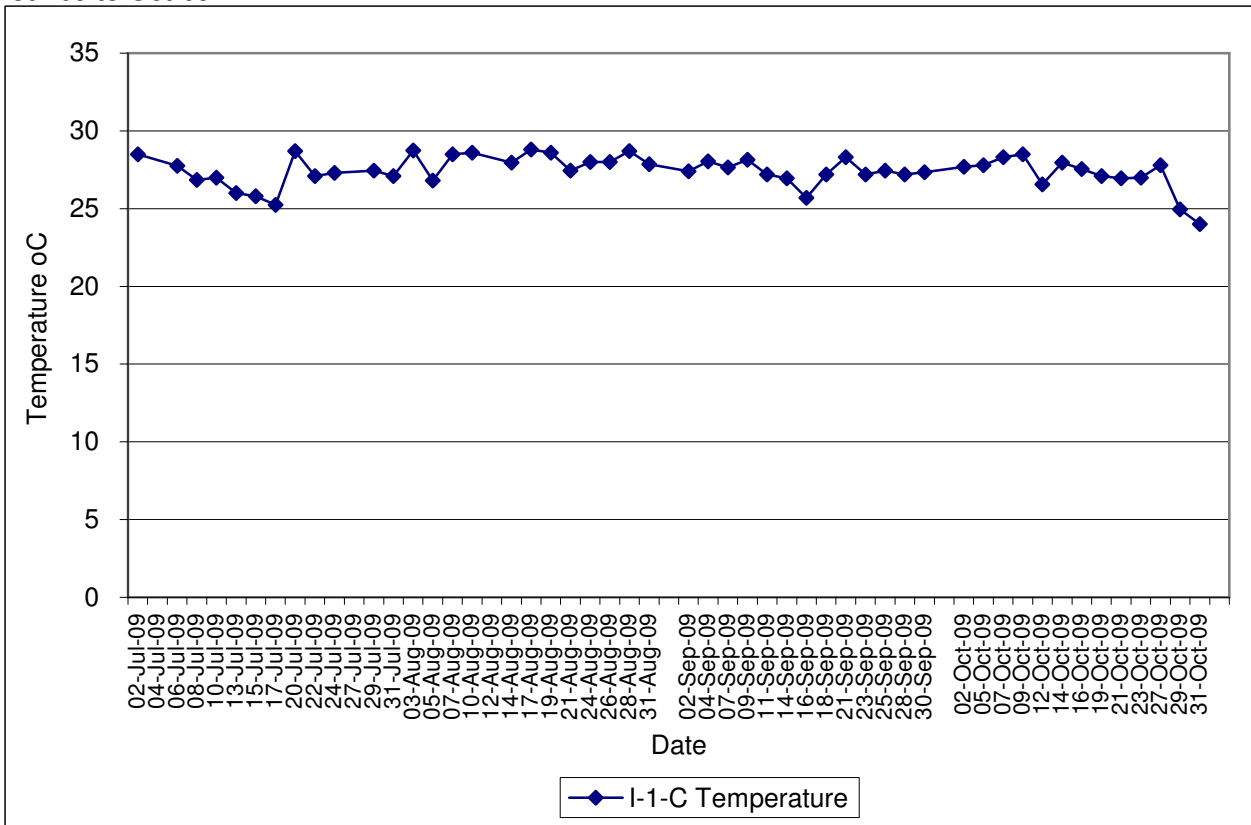
Water Quality Impact Monitoring Results

Monitoring Locations	Date	Start Time	Weather	Water Depth(m)	Temp			DO(mg/L)			Action/Limit Level of DO(mg/L)	pH			Turbidity(NTU)			Action/Limit Level of Tby	SS (mg/L)			Action/Limit Level of SS(mg/L)	Remarks:	Action to be taken
					1	2	Avg	1	2	Avg		1	2	Avg	1	2	Avg		1	2	Avg			
					1	2	Avg	1	2	Avg		1	2	Avg	1	2	Avg		1	2	Avg			
Sik Sik Yuen Ho Fung College I-1	02-Oct-09	09:55	Sunny	<1	27.50	27.50	27.50	7.43	7.33	7.38	7.67	7.67	7.67	2.41	2.35	2.38	2.0	2.0	2.0	Excavation by backhoe	Nil			
	05-Oct-09	09:45	Sunny	<1	28.00	28.00	28.00	7.66	7.61	7.64	7.51	7.50	7.51	1.97	1.90	1.94	3.0	2.3	2.7	Excavation by backhoe	Nil			
	07-Oct-09	09:40	Sunny	<1	28.20	28.20	28.20	7.86	7.82	7.84	7.63	7.62	7.63	1.98	1.95	1.97	2.0	2.0	2.0	Nil	Nil			
	09-Oct-09	11:00	Sunny	<1	28.30	28.30	28.30	7.62	7.68	7.65	7.58	7.59	7.59	2.60	2.43	2.52	2.0	2.0	2.0	Nil	Nil			
	12-Oct-09	10:45	Cloudy	<1	26.30	26.20	26.25	7.59	7.55	7.57	7.50	7.50	7.50	4.50	4.56	4.53	3.5	2.8	3.2	Nil	Nil			
	14-Oct-09	11:20	Cloudy	<1	27.60	27.60	27.60	7.83	7.85	7.84	7.58	7.58	7.58	2.80	2.84	2.82	2.0	2.0	2.0	Excavation by backhoe, breaking work	Nil			
	16-Oct-09	10:56	Sunny	<1	27.70	27.70	27.70	7.66	7.63	7.65	7.42	7.44	7.43	2.47	2.55	2.51	5.2	4.9	5.1	Excavation by backhoe, breaking work	Nil			
	19-Oct-09	10:55	Fine	<1	27.00	27.00	27.00	7.77	7.70	7.74	7.35	7.44	7.40	7.05	7.11	7.08	8.2	8.3	8.3	Excavation by backhoe, breaking work	Nil			
	21-Oct-09	09:40	Cloudy	<1	27.10	27.10	27.10	7.74	7.69	7.72	7.44	7.75	7.60	1.88	1.93	1.91	2.0	2.0	2.0	Excavation by backhoe, breaking work	Nil			
	23-Oct-09	11:20	Fine	<1	26.50	26.60	26.55	7.45	7.52	7.49	7.32	7.33	7.33	1.35	1.42	1.39	2.0	2.0	2.0	Excavation by backhoe, breaking work	Nil			
	27-Oct-09	09:50	Sunny	<1	26.90	26.80	26.85	7.74	7.70	7.72	7.23	7.23	7.23	3.00	2.97	2.99	3.4	4.6	4.0	Excavation by backhoe, breaking work	Nil			
	29-Oct-09	09:00	Sunny	<1	24.70	24.80	24.75	7.76	7.72	7.74	7.22	7.22	7.22	3.10	3.06	3.08	4.0	4.7	4.4	Excavation by backhoe, breaking work	Nil			
	31-Oct-09	10:45	Sunny	<1	24.20	24.20	24.20	7.80	7.77	7.79	7.33	7.33	7.33	2.20	2.27	2.24	4.6	5.6	5.1	Excavation by backhoe, breaking work	Nil			
	Sik Sik Yuen Ho Fung College I-1-C	02-Oct-09	09:45	Sunny	<1	27.70	27.70	27.70	7.54	7.45	7.50	7.68	7.67	7.68	2.57	2.66	2.62	2.0	2.0	2.0	Nil	Nil		
05-Oct-09		09:35	Sunny	<1	27.80	27.80	27.80	7.68	7.71	7.70	7.50	7.50	7.50	2.03	2.18	2.11	2.4	2.1	2.3	Nil	Nil			
07-Oct-09		09:30	Sunny	<1	28.30	28.30	28.30	7.89	7.92	7.91	7.65	7.64	7.65	2.10	2.02	2.06	2.0	2.0	2.0	Nil	Nil			
09-Oct-09		10:50	Sunny	<1	28.50	28.50	28.50	7.52	7.58	7.55	7.60	7.60	7.60	2.71	2.58	2.65	2.0	2.0	2.0	Nil	Nil			
12-Oct-09		10:35	Cloudy	<1	26.60	26.50	26.55	7.60	7.57	7.59	7.52	7.52	7.52	4.80	4.66	4.73	3.3	2.9	3.1	Nil	Nil			
14-Oct-09		11:10	Cloudy	<1	28.00	27.90	27.95	7.74	7.80	7.77	7.55	7.55	7.55	2.87	2.96	2.92	2.0	2.0	2.0	Nil	Nil			
16-Oct-09		10:43	Sunny	<1	27.50	27.60	27.55	7.78	7.74	7.76	7.42	7.42	7.42	2.65	2.83	2.74	4.6	5.0	4.8	Nil	Nil			
19-Oct-09		10:45	Fine	<1	27.10	27.10	27.10	7.79	7.84	7.82	7.42	7.42	7.42	7.18	7.34	7.26	8.6	8.2	8.4	Nil	Nil			
21-Oct-09		09:28	Cloudy	<1	27.00	26.90	26.95	7.76	7.82	7.79	7.43	7.45	7.44	1.98	2.11	2.05	2.0	2.0	2.0	Nil	Nil			
23-Oct-09		11:08	Fine	<1	27.00	27.00	27.00	7.53	7.48	7.51	7.33	7.36	7.35	1.40	1.47	1.44	2.0	2.0	2.0	Nil	Nil			
27-Oct-09		09:40	Sunny	<1	27.80	27.80	27.80	7.78	7.81	7.80	7.22	7.25	7.24	3.18	3.25	3.22	4.9	4.4	4.7	Nil	Nil			
29-Oct-09		08:50	Sunny	<1	25.00	24.90	24.95	7.86	7.77	7.82	7.21	7.22	7.22	3.18	3.25	3.22	4.5	3.9	4.2	Nil	Nil			
31-Oct-09		10:38	Sunny	<1	24.00	24.00	24.00	7.86	7.90	7.88	7.33	7.33	7.33	2.47	2.56	2.52	4.4	4.2	4.3	Nil	Nil			
Hong Hoi Chee Hong Temple I-2		02-Oct-09	11:00	Sunny	<1	27.50	27.50	27.50	7.45	7.41	7.43	7.60	7.60	7.60	2.30	2.25	2.28	2.1	2.7	2.4	Excavation by backhoe	Nil		
	05-Oct-09	09:18	Sunny	<1	28.10	28.10	28.10	7.60	7.56	7.58	7.52	7.52	7.52	1.22	1.17	1.20	2.0	2.0	2.0	Excavation by backhoe	Nil			
	07-Oct-09	09:10	Sunny	<1	28.60	28.60	28.60	7.68	7.63	7.66	7.61	7.61	7.61	1.30	1.22	1.26	2.0	2.0	2.0	Nil	Nil			
	09-Oct-09	10:26	Sunny	<1	28.60	28.60	28.60	7.49	7.46	7.48	7.71	7.70	7.71	1.00	1.07	1.04	2.0	2.0	2.0	Nil	Nil			
	12-Oct-09	10:12	Cloudy	<1	26.00	26.00	26.00	7.70	7.66	7.68	7.66	7.66	7.66	1.50	1.57	1.54	2.0	2.0	2.0	Nil	Nil			
	14-Oct-09	10:48	Cloudy	<1	27.50	27.40	27.45	7.38	7.34	7.36	7.52	7.52	7.52	1.22	1.29	1.26	2.0	2.0	2.0	Hammering and Cutting work	Nil			
	16-Oct-09	10:17	Sunny	<1	27.50	27.60	27.55	7.75	7.70	7.73	7.42	7.42	7.42	2.37	2.26	2.32	2.0	2.0	2.0	Nil	Nil			
	19-Oct-09	10:22	Fine	<1	27.00	27.00	27.00	7.75	7.78	7.77	7.36	7.36	7.36	2.55	2.67	2.61	2.2	2.6	2.4	Nil	Nil			
	21-Oct-09	09:03	Cloudy	<1	27.50	27.40	27.45	7.45	7.40	7.43	7.42	7.41	7.42	1.22	1.18	1.20	2.0	2.0	2.0	Nil	Nil			
	23-Oct-09	10:45	Fine	<1	26.80	26.70	26.75	7.47	7.55	7.51	7.26	7.29	7.28	1.40	1.37	1.39	2.0	2.0	2.0	Nil	Nil			
	27-Oct-09	09:18	Sunny	<1	26.10	26.20	26.15	7.78	7.85	7.82	7.33	7.33	7.33	1.42	1.51	1.47	2.0	2.0	2.0	Nil	Nil			
	29-Oct-09	09:25	Sunny	<1	24.30	24.40	24.35	7.65	7.61	7.63	7.26	7.26	7.26	1.57	1.62	1.60	2.0	2.0	2.0	Cutting	Nil			
	31-Oct-09	10:15	Sunny	<1	23.80	23.90	23.85	7.83	7.85	7.84	7.35	7.35	7.35	1.40	1.33	1.37	2.0	2.0	2.0	Excavation by backhoe	Nil			
	Hong Hoi Chee Hong Temple I-2-C	02-Oct-09	10:50	Sunny	<1	27.10	27.10	27.10	7.60	7.55	7.58	7.57	7.56	7.57	2.37	2.44	2.41	3.2	3.0	3.1	Nil	Nil		
05-Oct-09		09:08	Sunny	<1	28.20	28.20	28.20	7.62	7.68	7.65	7.51	7.52	7.52	1.35	1.42	1.39	2.0	2.0	2.0	Nil	Nil			
07-Oct-09		08:58	Sunny	<1	28.20	28.20	28.20	7.80	7.72	7.76	7.60	7.60	7.60	1.33	1.41	1.37	2.0	2.0	2.0	Nil	Nil			
09-Oct-09		10:15	Sunny	<1	28.40	28.40	28.40	7.63	7.58	7.61	7.67	7.66	7.67	1.08	1.17	1.13	2.0	2.0	2.0	Nil	Nil			
12-Oct-09		10:00	Cloudy	<1	26.00	26.00	26.00	7.65	7.69	7.67	7.61	7.60	7.61	1.66	1.60	1.63	2.0	2.0	2.0	Nil	Nil			
14-Oct-09		10:37	Cloudy	<1	27.30	27.40	27.35	7.50	7.44	7.47	7.52	7.53	7.53	1.33	1.37	1.35	2.0	2.0	2.0	Nil	Nil			
16-Oct-09		10:05	Sunny	<1	27.80	27.70	27.75	7.79	7.82	7.81	7.42	7.41	7.42	2.41	2.46	2.44	2.0	2.0	2.0	Nil	Nil			
19-Oct-09		10:11	Fine	<1	27.20	27.20	27.20	7.86	7.82	7.84	7.36	7.36	7.36	2.65	2.71	2.68	2.0	2.0	2.0	Nil	Nil			
21-Oct-09		08:50	Cloudy	<1	27.20	27.20	27.20	7.50	7.55	7.53	7.40	7.44	7.42	1.25	1.37	1.31	2.0	2.0	2.0	Nil	Nil			
23-Oct-09		10:35	Fine	<1	27.00	26.90	26.95	7.49	7.54	7.52	7.22	7.24	7.23	1.50	1.42	1.46	2.0	2.0	2.0	Nil	Nil			
27-Oct-09		09:07	Sunny	<1	26.20	26.20	26.20	7.66	7.72	7.69	7.34	7.33	7.34	1.57	1.55	1.56	2.0	2.0	2.0	Nil	Nil			
29-Oct-09		09:15	Sunny	<1	24.50	24.50	24.50	7.73	7.66	7.70	7.25	7.26	7.26	1.68	1.57	1.63	2.0	2.0	2.0	Nil	Nil			
31-Oct-09		10:02	Sunny	<1	23.70	23.80	23.75	7.87	7.82	7.85	7.33	7.35	7.34	1.50	1.47	1.49	2.0	2.0	2.0	Nil	Nil			
Squatters I-3		02-Oct-09	11:40	Sunny	<1	27.80	27.80	27.80	7.66	7.70	7.68	7.55	7.55	7.55	2.77	2.66	2.72	2.3	2.5	2.4	Nil	N		

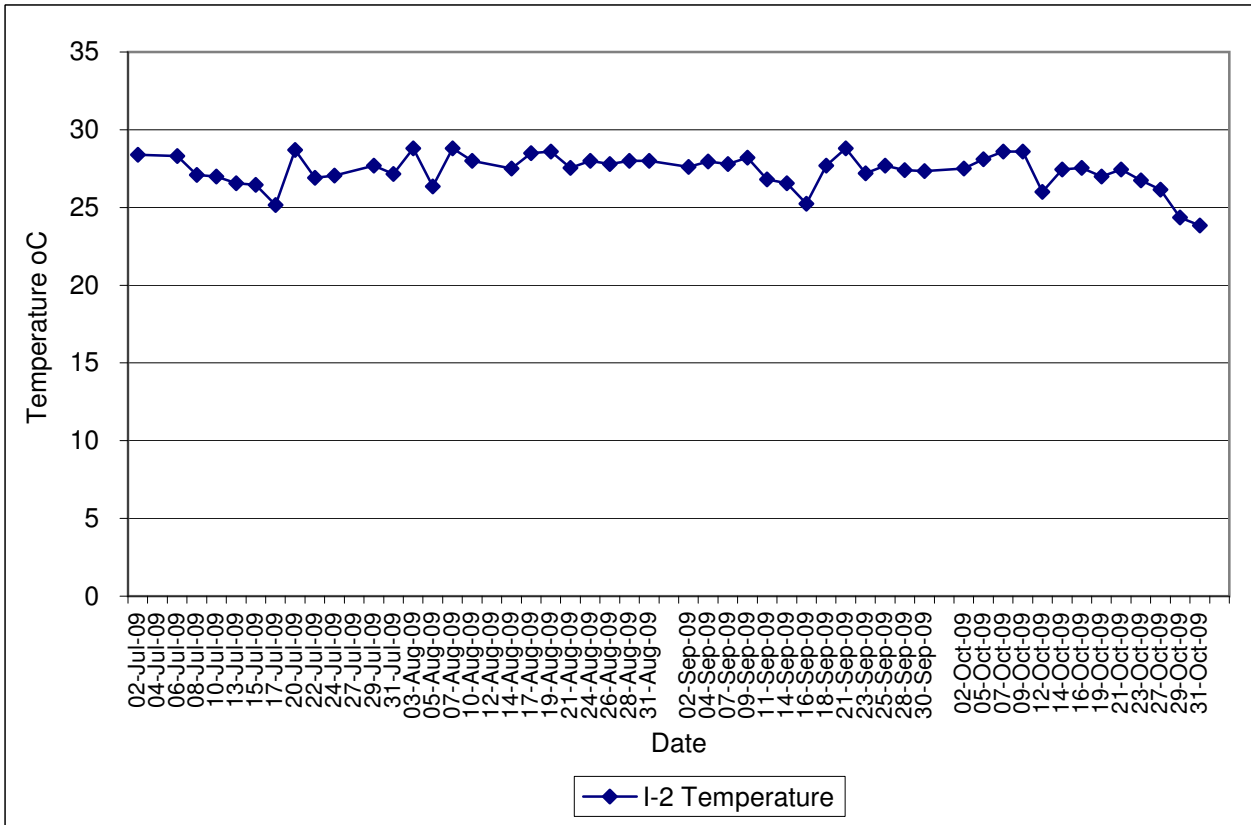
**Contract No. DC/2007/12 - Design and Construction of Tsuen Wan Drainage Tunnel
 Water Quality Results at Sik Sik Yuen Ho Fung College (I-1)
 Jul-09 to Oct-09**



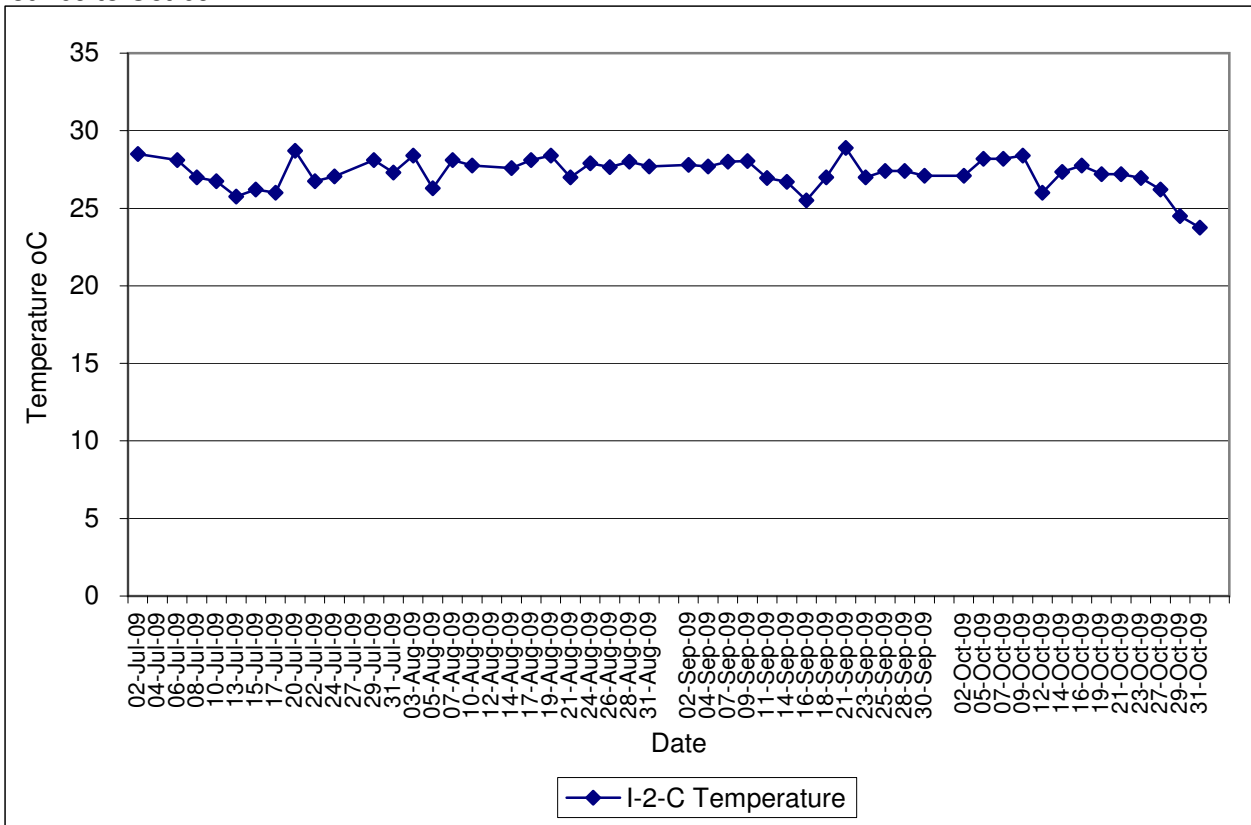
**Contract No. DC/2007/12 - Design and Construction of Tsuen Wan Drainage Tunnel
 Water Quality Results at Sik Sik Yuen Ho Fung College (I-1-C)
 Jul-09 to Oct-09**



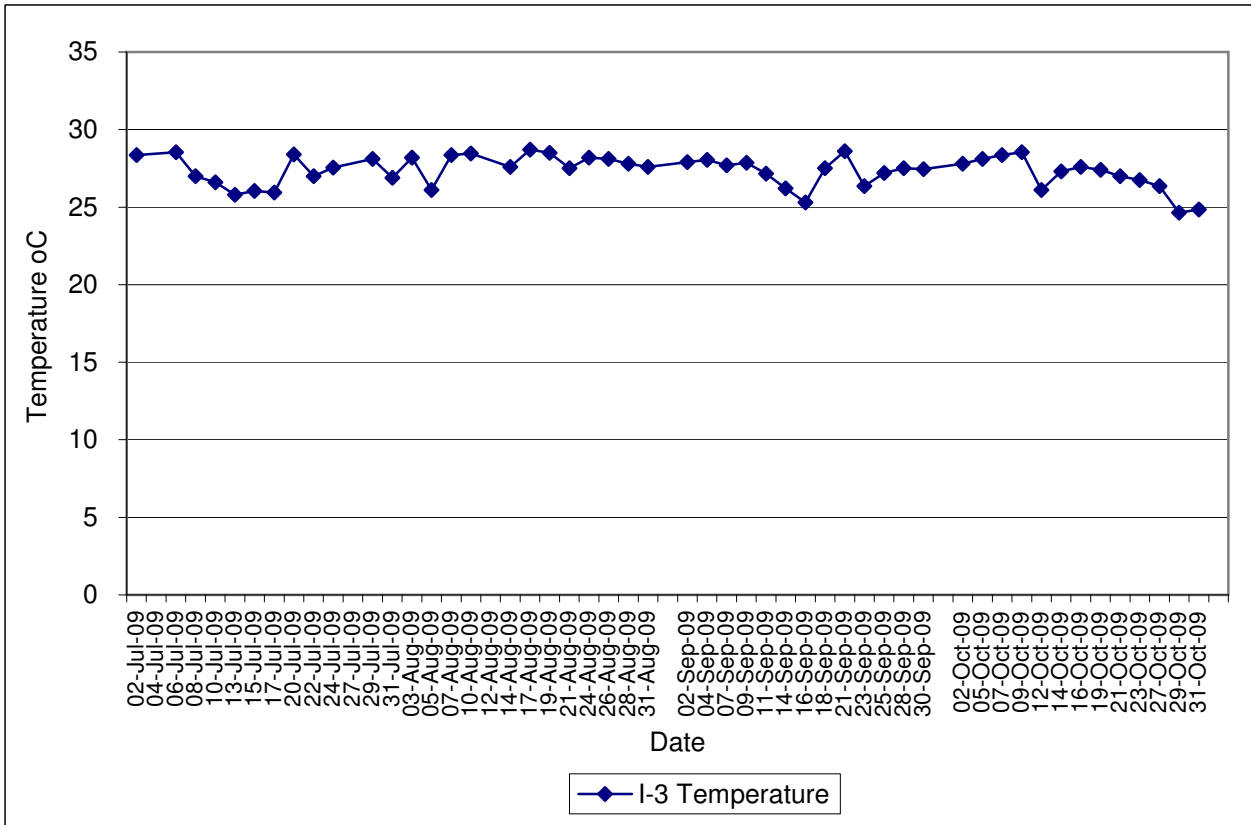
Contract No. DC/2007/12 - Design and Construction of Tsuen Wan Drainage Tunnel
Water Quality Results at Hong Hoi Chee Hong Temple (I-2)
Jul-09 to Oct-09



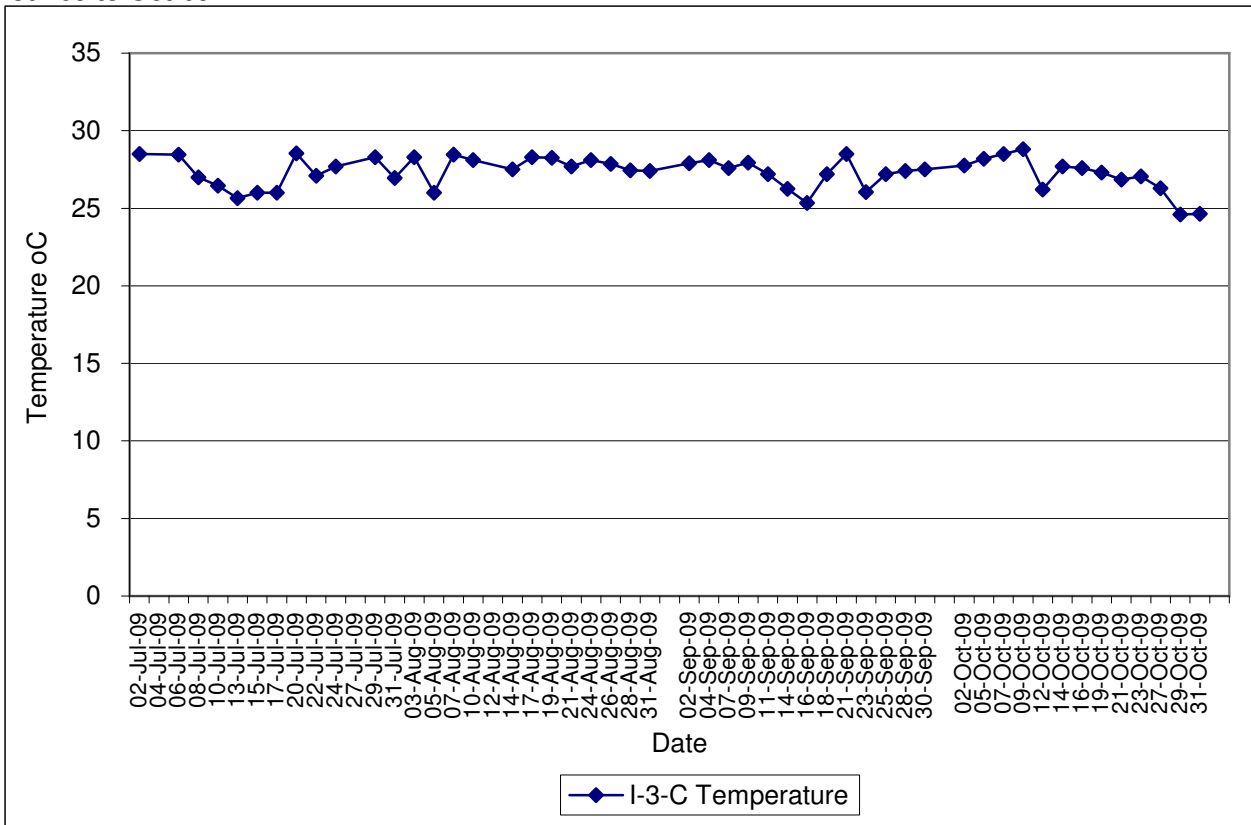
Contract No. DC/2007/12 - Design and Construction of Tsuen Wan Drainage Tunnel
Water Quality Results at Hong Hoi Chee Hong Temple (I-2-C)
Jul-09 to Oct-09



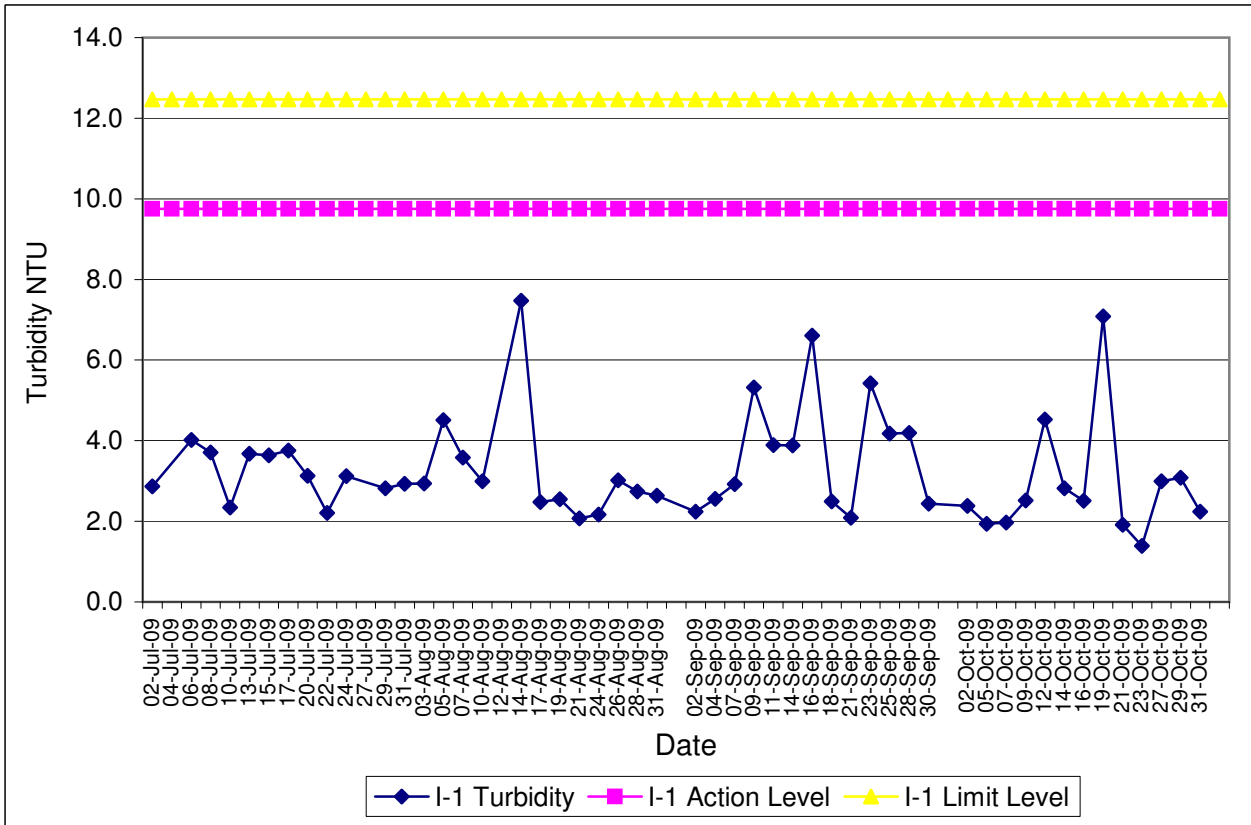
Contract No. DC/2007/12 - Design and Construction of Tsuen Wan Drainage Tunnel
Water Quality Results at Squatters (I-3)
Jul-09 to Oct-09



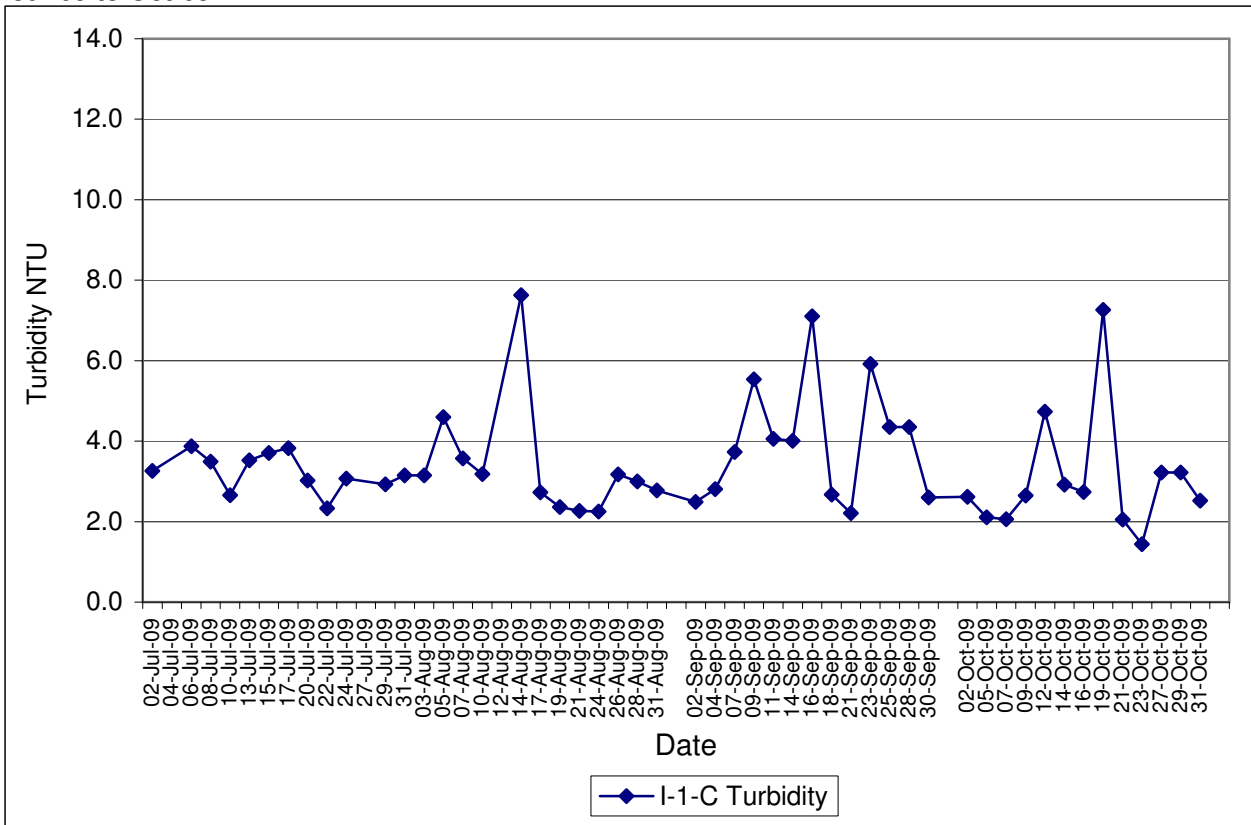
Contract No. DC/2007/12 - Design and Construction of Tsuen Wan Drainage Tunnel
Water Quality Results at Squatters (I-3-C)
Jul-09 to Oct-09



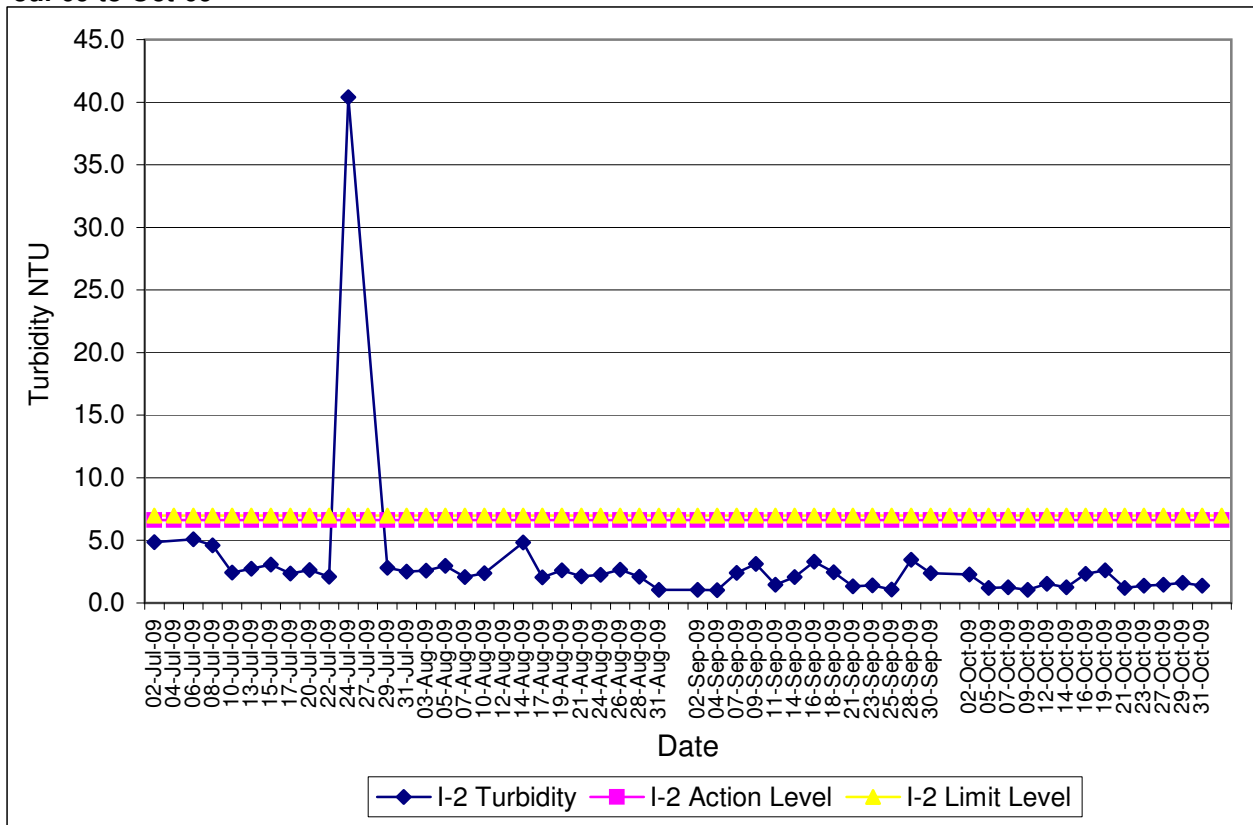
Contract No. DC/2007/12 - Design and Construction of Tsuen Wan Drainage Tunnel
Water Quality Results at Sik Sik Yuen Ho Fung College (I-1)
Jul-09 to Oct-09



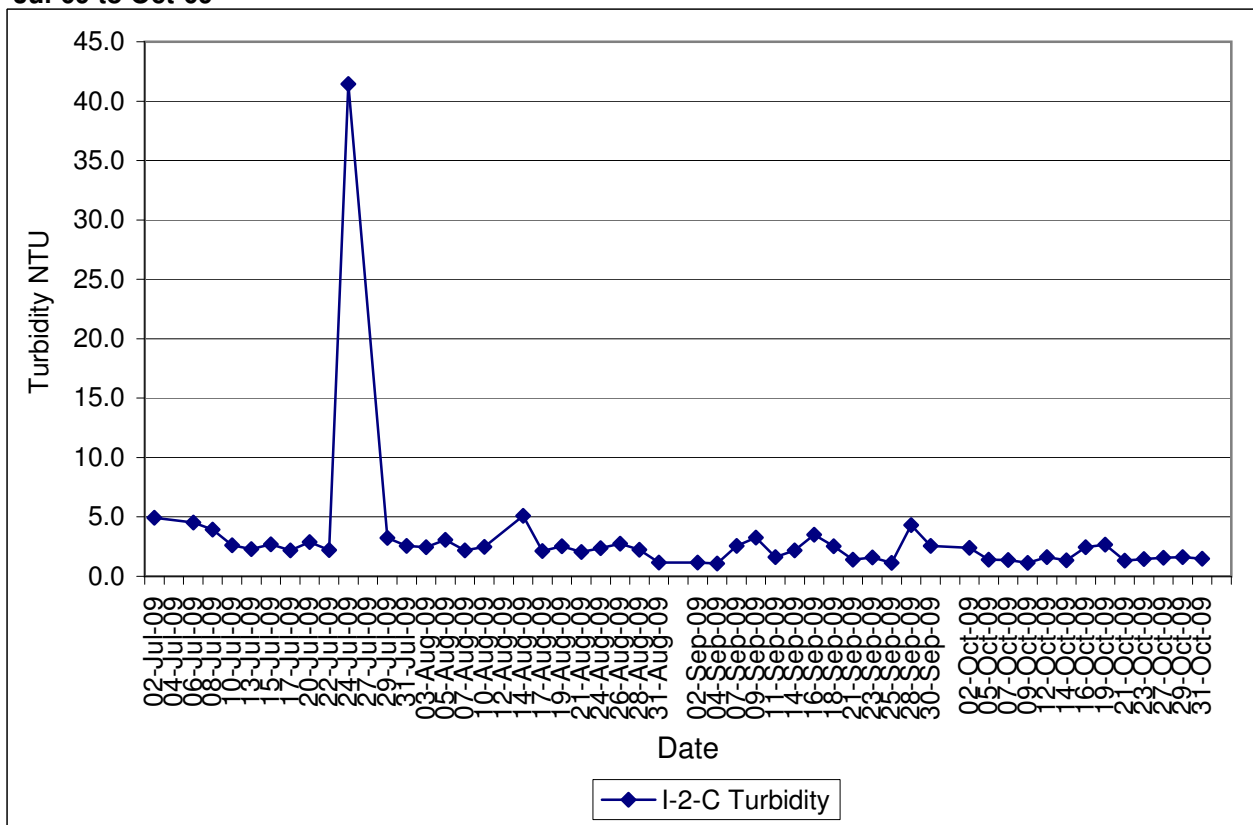
Contract No. DC/2007/12 - Design and Construction of Tsuen Wan Drainage Tunnel
Water Quality Results at Sik Sik Yuen Ho Fung College (I-1-C)
Jul-09 to Oct-09



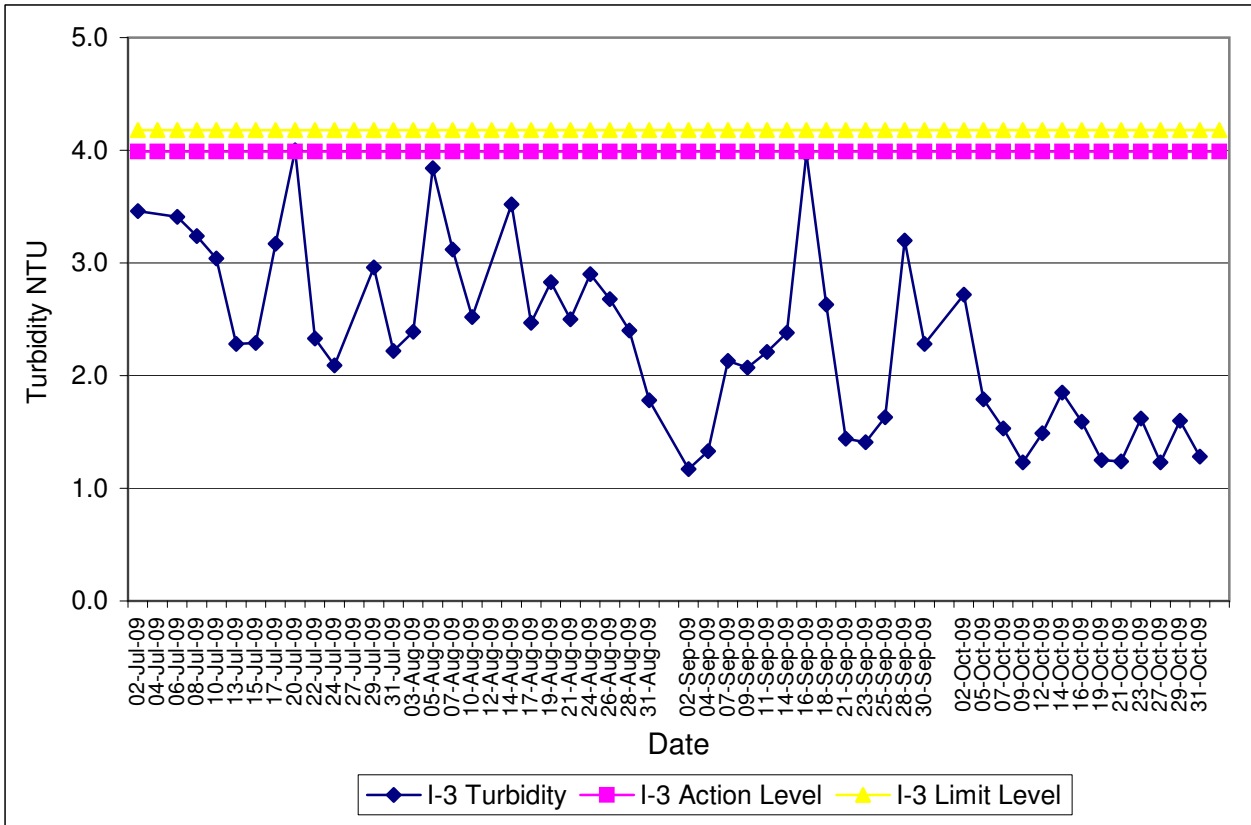
Contract No. DC/2007/12 - Design and Construction of Tsuen Wan Drainage Tunnel
Water Quality Results at Hong Hoi Chee Hong Temple (I-2)
Jul-09 to Oct-09



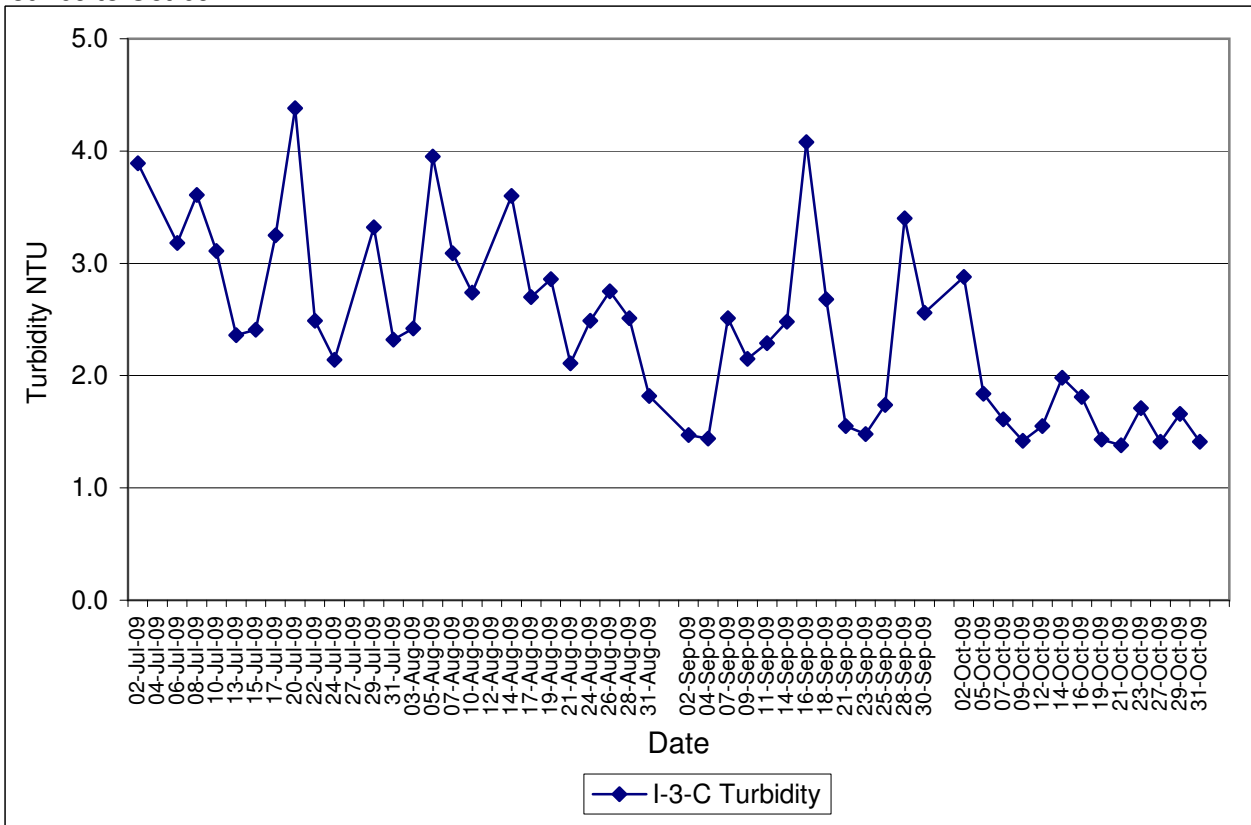
Contract No. DC/2007/12 - Design and Construction of Tsuen Wan Drainage Tunnel
Water Quality Results at Hong Hoi Chee Hong Temple (I-2-C)
Jul-09 to Oct-09



Contract No. DC/2007/12 - Design and Construction of Tsuen Wan Drainage Tunnel
Water Quality Results at Squatters (I-3)
Jul-09 to Oct-09

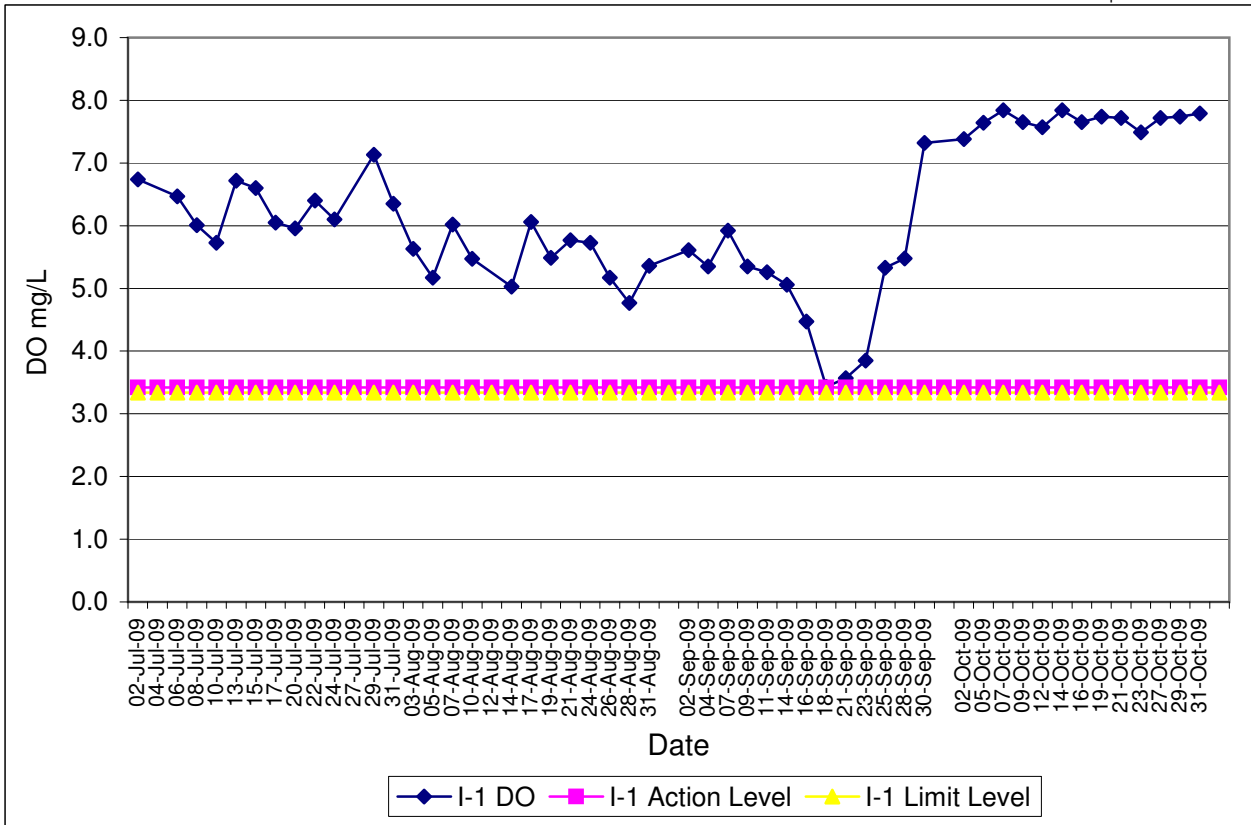


Contract No. DC/2007/12 - Design and Construction of Tsuen Wan Drainage Tunnel
Water Quality Results at Squatters (I-3-C)
Jul-09 to Oct-09

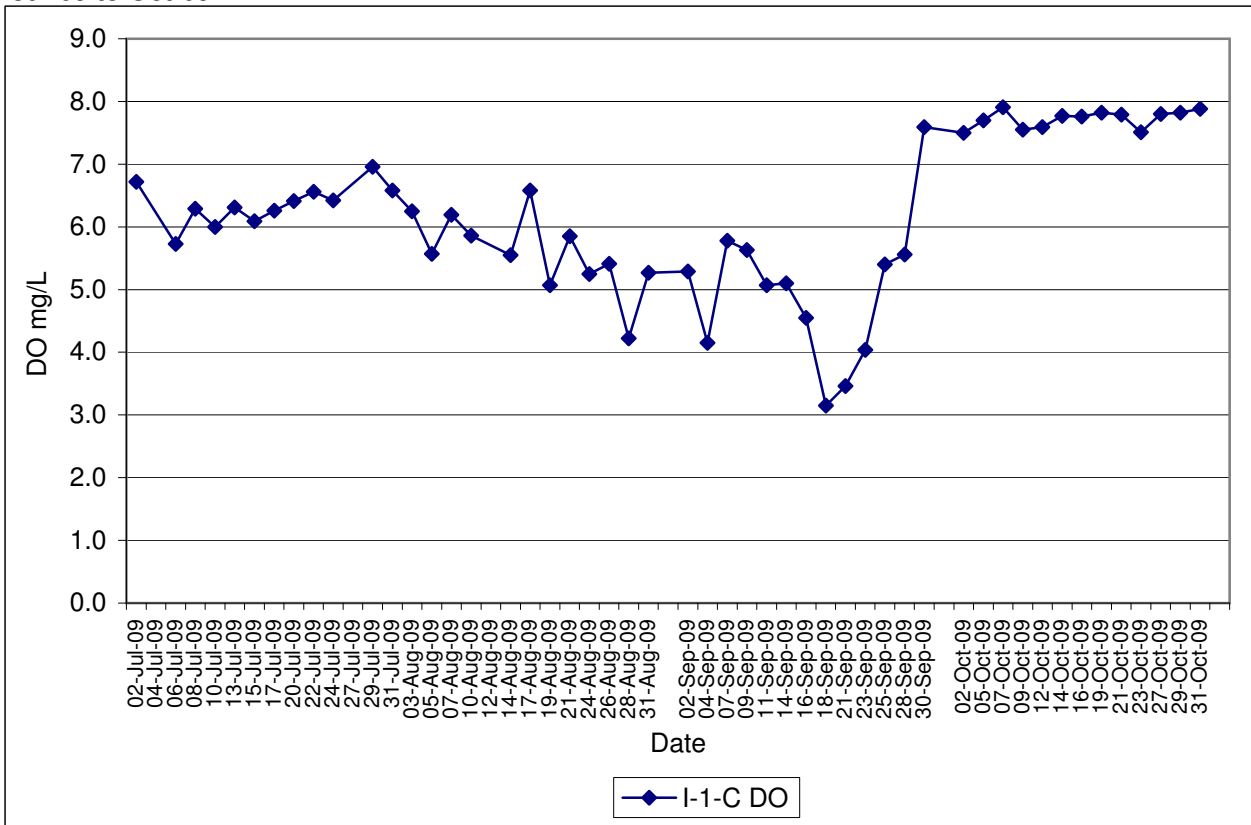


Contract No. DC/2007/12 - Design and Construction of Tsuen Wan Drainage Tunnel
Water Quality Results at Sik Sik Yuen Ho Fung College (I-1)
Jul-09 to Oct-09

Note: Exceedances of Action / Limit Levels occur when the levels of DO are below the respective limit levels.

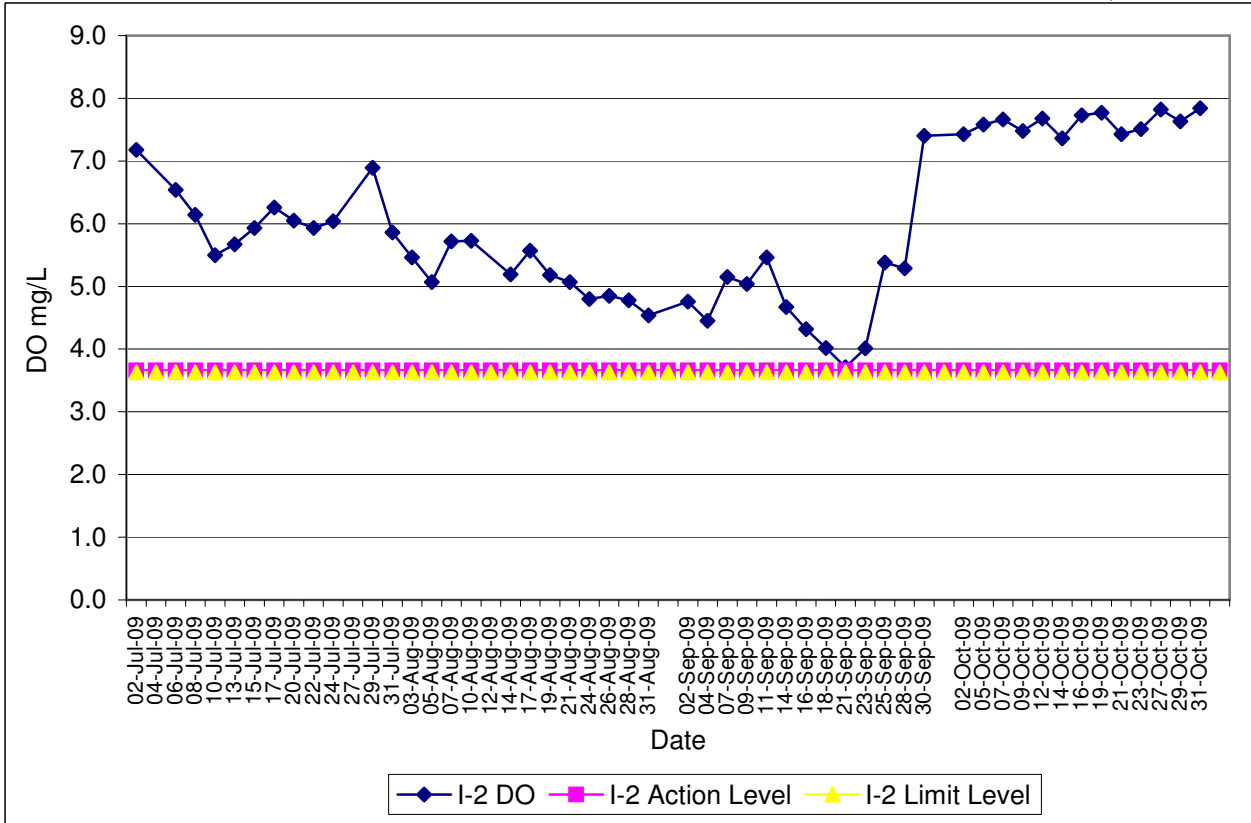


Contract No. DC/2007/12 - Design and Construction of Tsuen Wan Drainage Tunnel
Water Quality Results at Sik Sik Yuen Ho Fung College (I-1-C)
Jul-09 to Oct-09

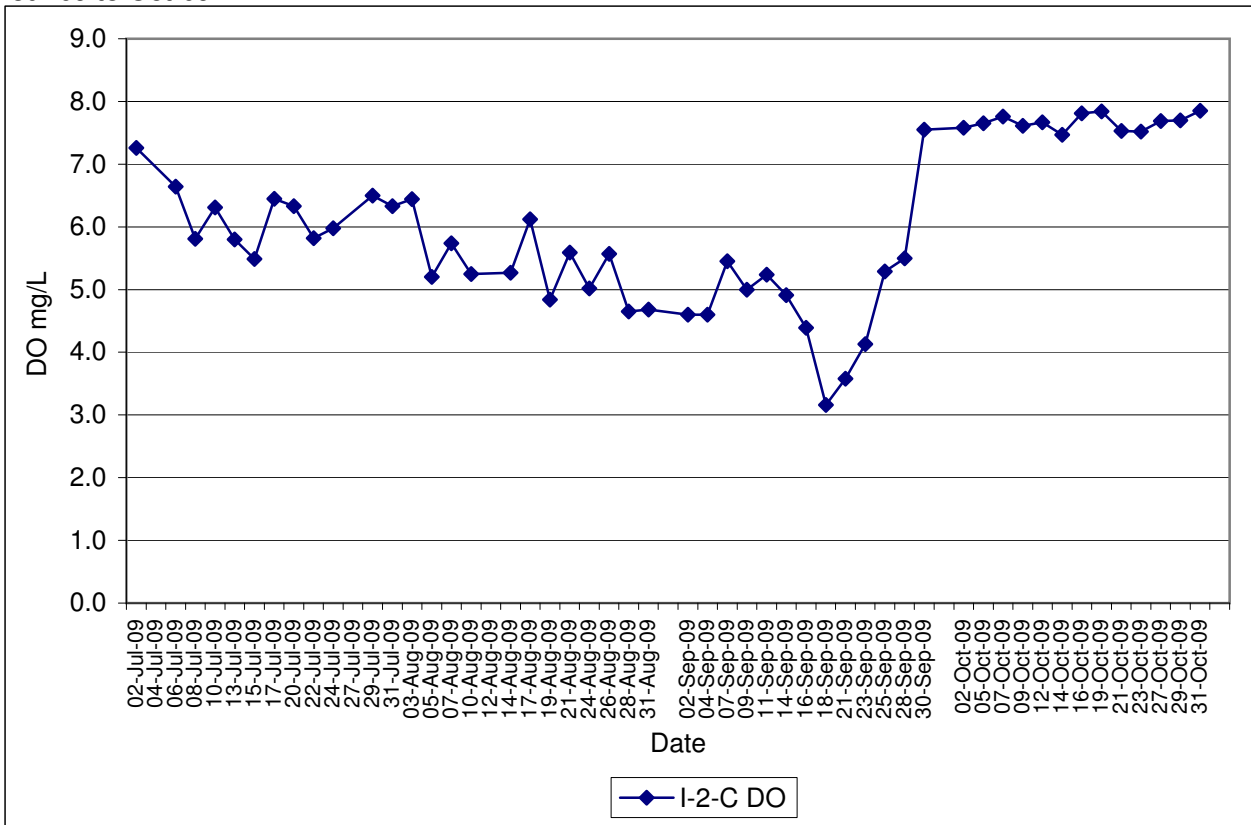


Contract No. DC/2007/12 - Design and Construction of Tsuen Wan Drainage Tunnel
Water Quality Results at Hong Hoi Chee Hong Temple (I-2)
Jul-09 to Oct-09

Note: Exceedances of Action / Limit Levels occur when the levels of DO are below the respective limit levels.

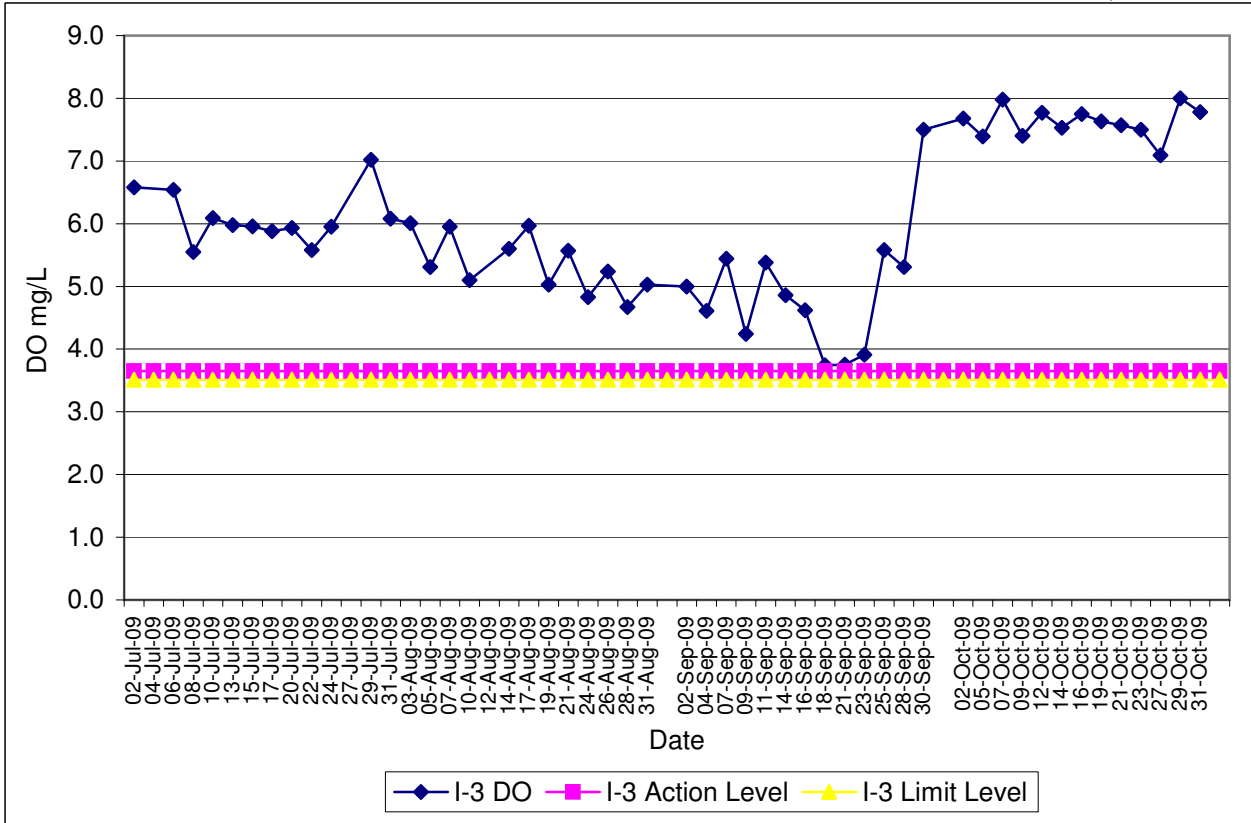


Contract No. DC/2007/12 - Design and Construction of Tsuen Wan Drainage Tunnel
Water Quality Results at Hong Hoi Chee Hong Temple (I-2-C)
Jul-09 to Oct-09

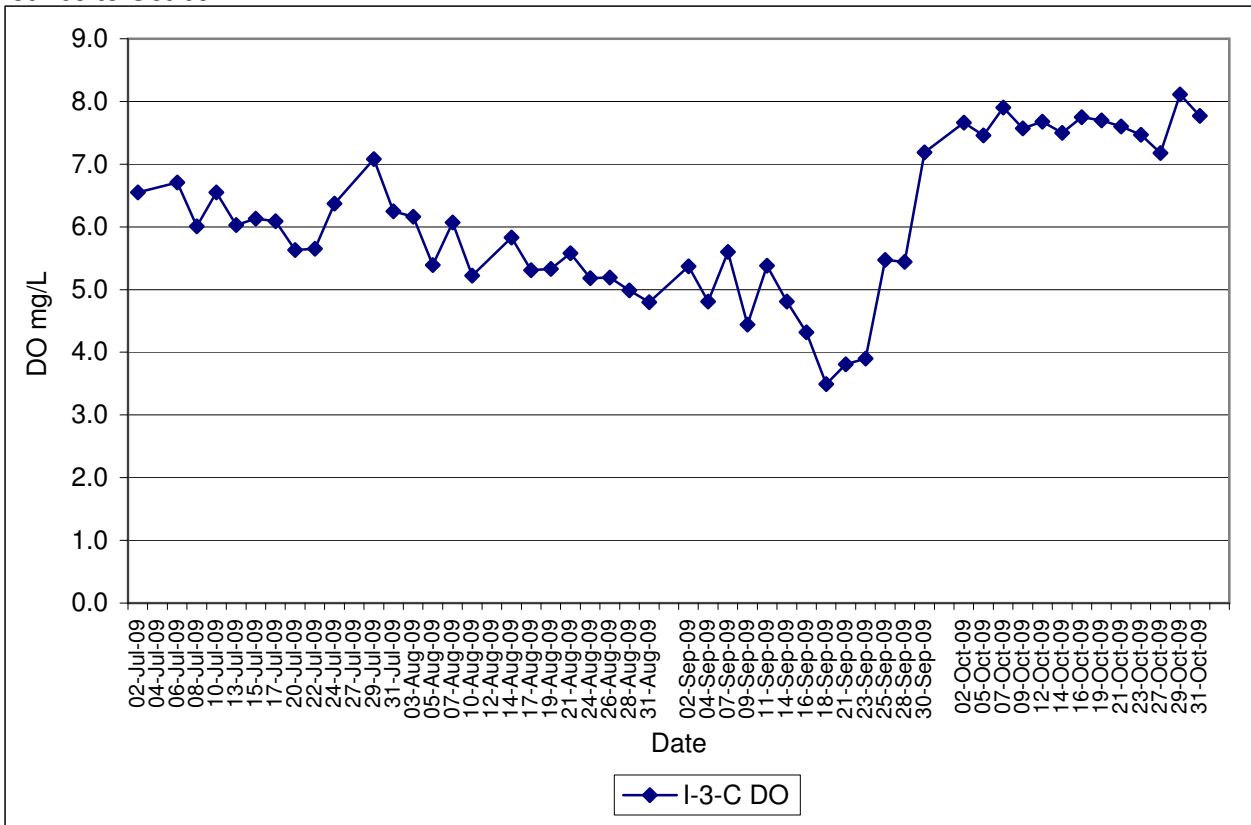


Contract No. DC/2007/12 - Design and Construction of Tsuen Wan Drainage Tunnel
Water Quality Results at Squatters (I-3)
Jul-09 to Oct-09

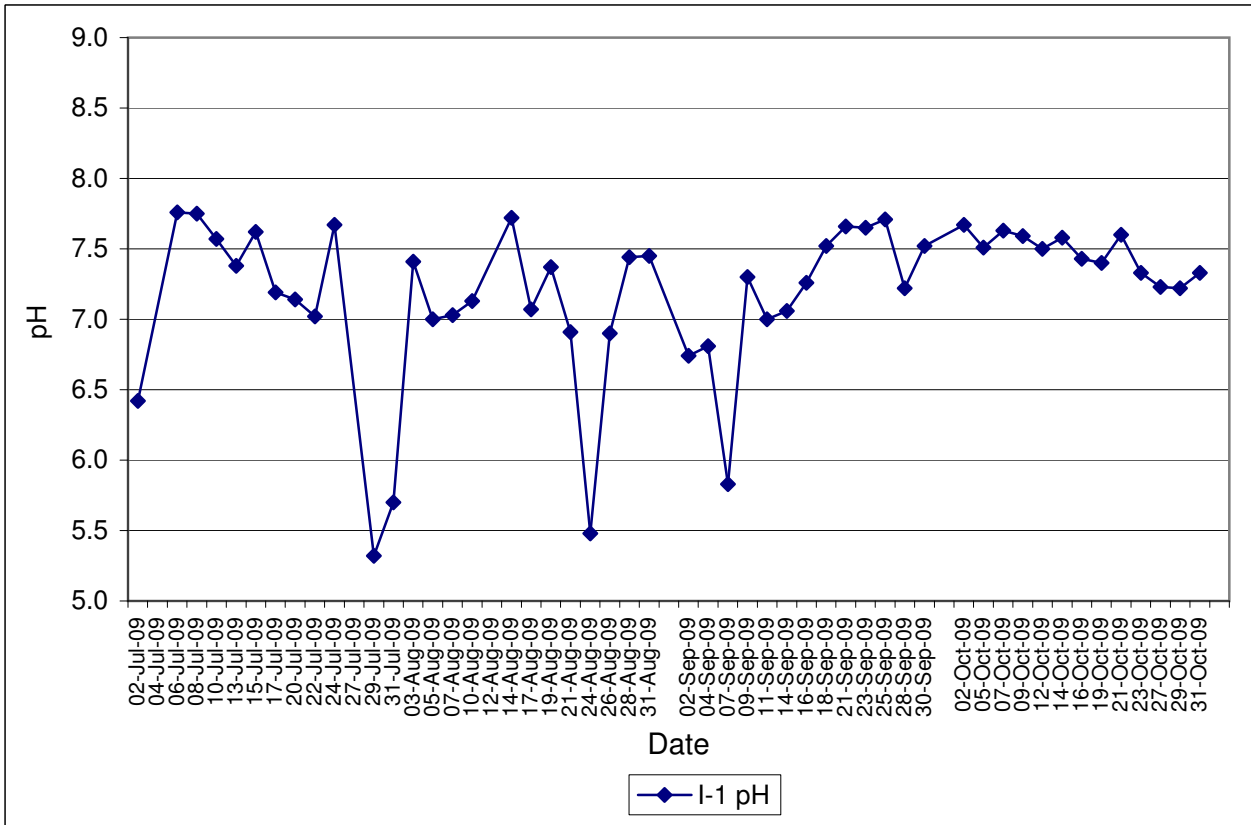
Note: Exceedances of Action / Limit Levels occur when the levels of DO are below the respective limit levels.



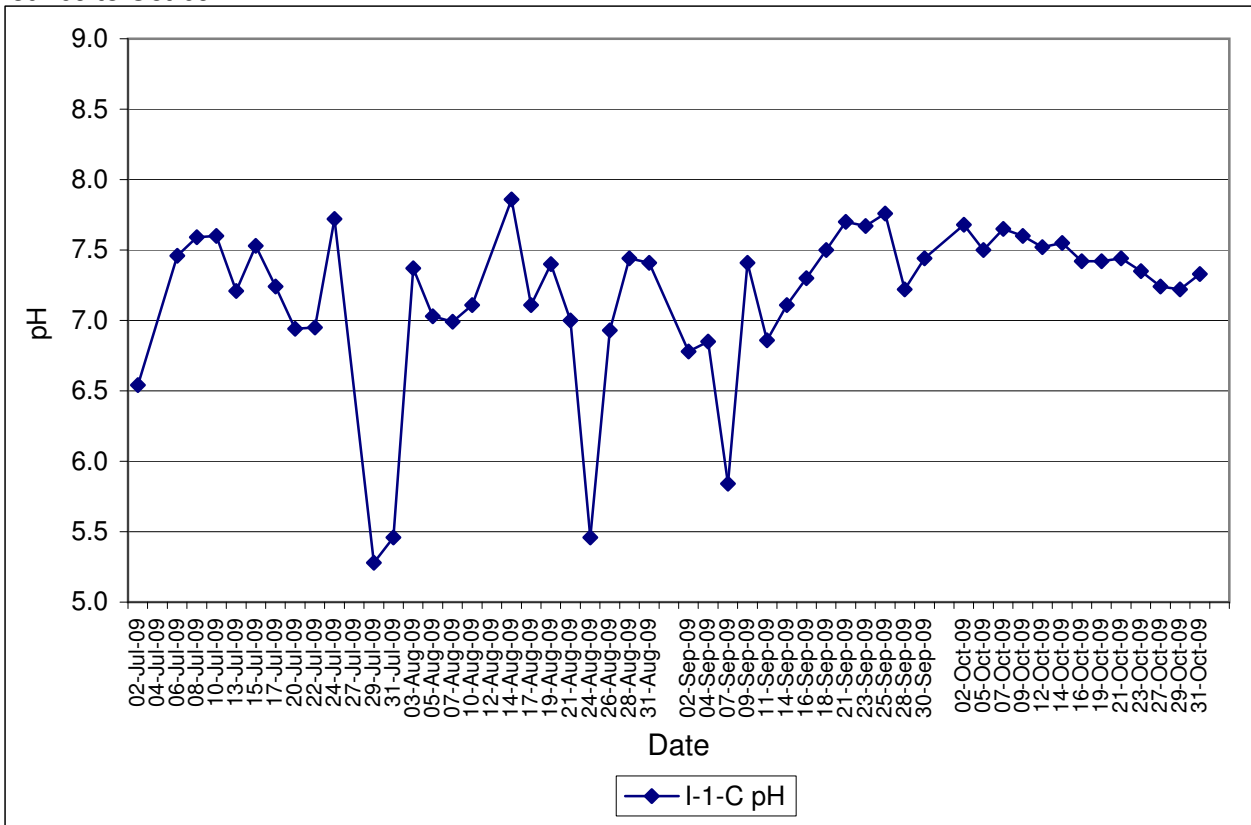
Contract No. DC/2007/12 - Design and Construction of Tsuen Wan Drainage Tunnel
Water Quality Results at Squatters (I-3-C)
Jul-09 to Oct-09



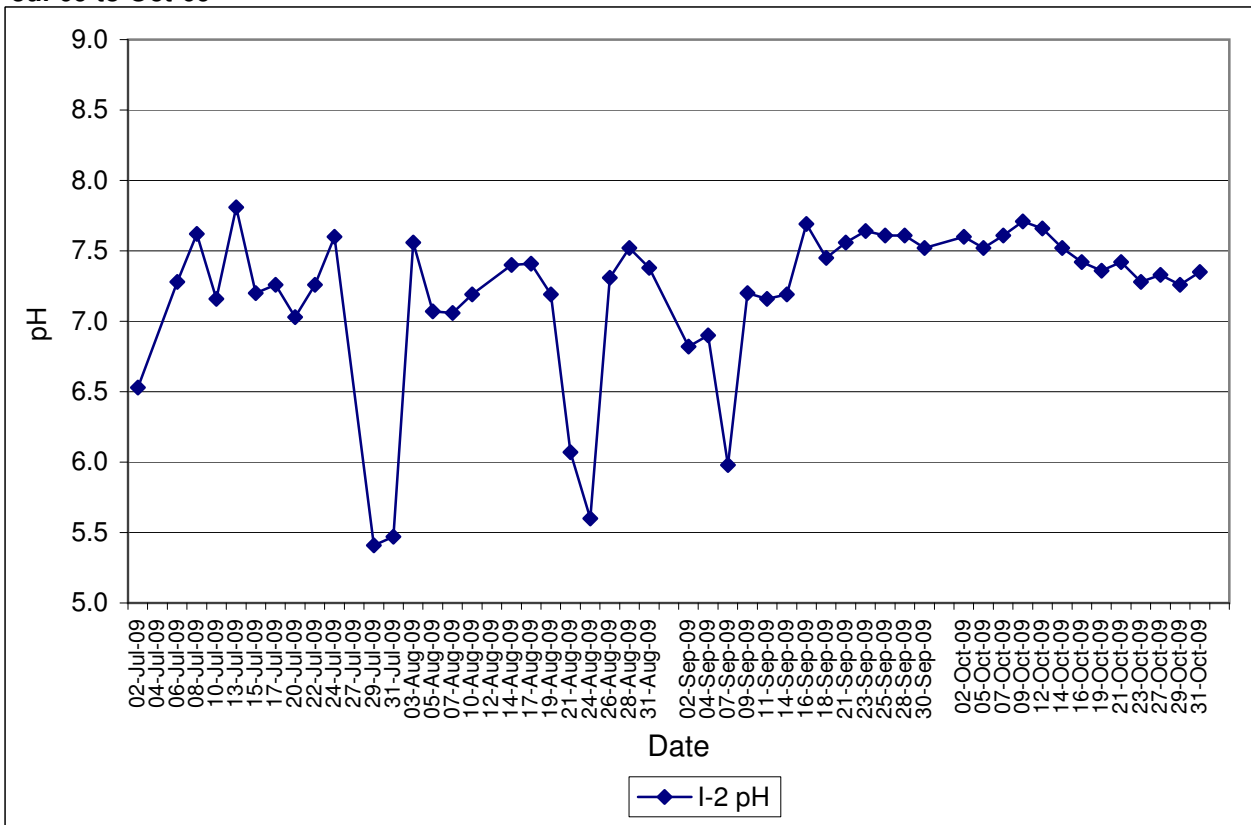
Contract No. DC/2007/12 - Design and Construction of Tsuen Wan Drainage Tunnel
Water Quality Results at Sik Sik Yuen Ho Fung College (I-1)
Jul-09 to Oct-09



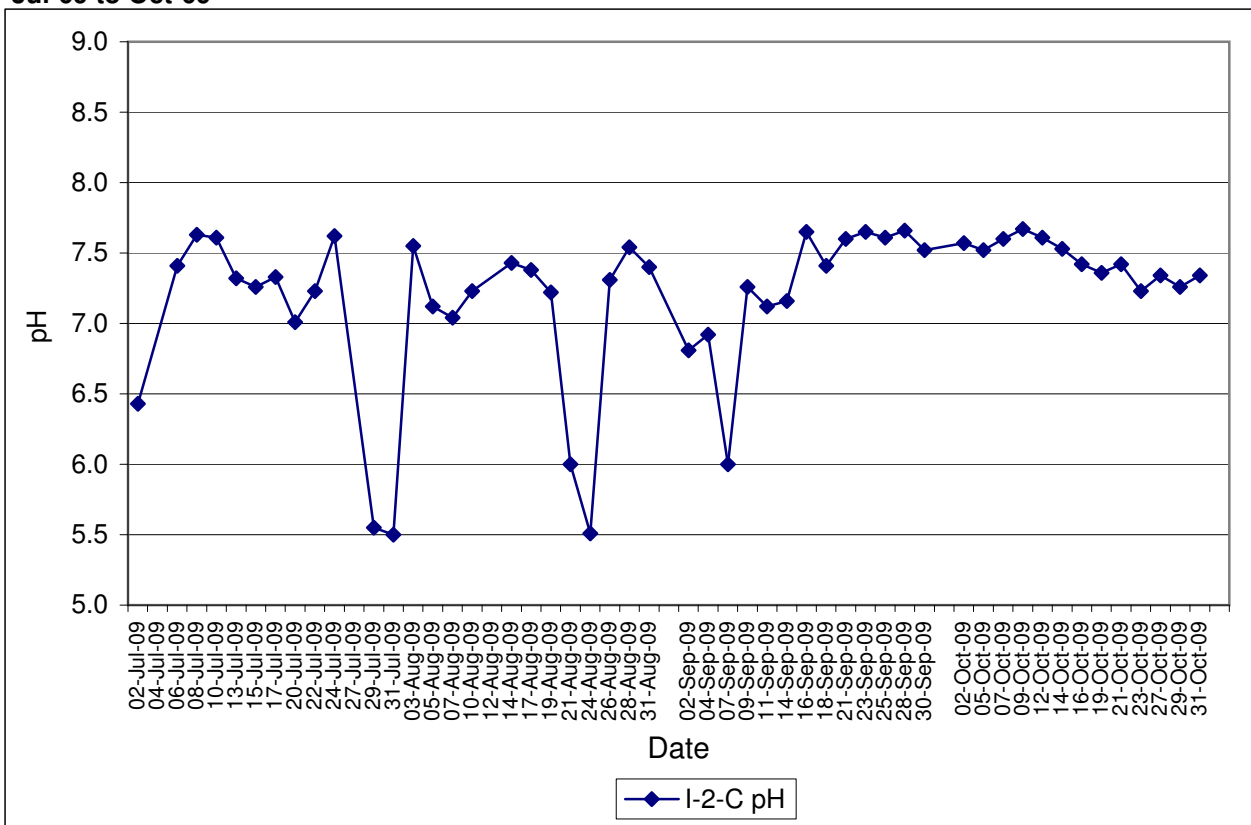
Contract No. DC/2007/12 - Design and Construction of Tsuen Wan Drainage Tunnel
Water Quality Results at Sik Sik Yuen Ho Fung College (I-1-C)
Jul-09 to Oct-09



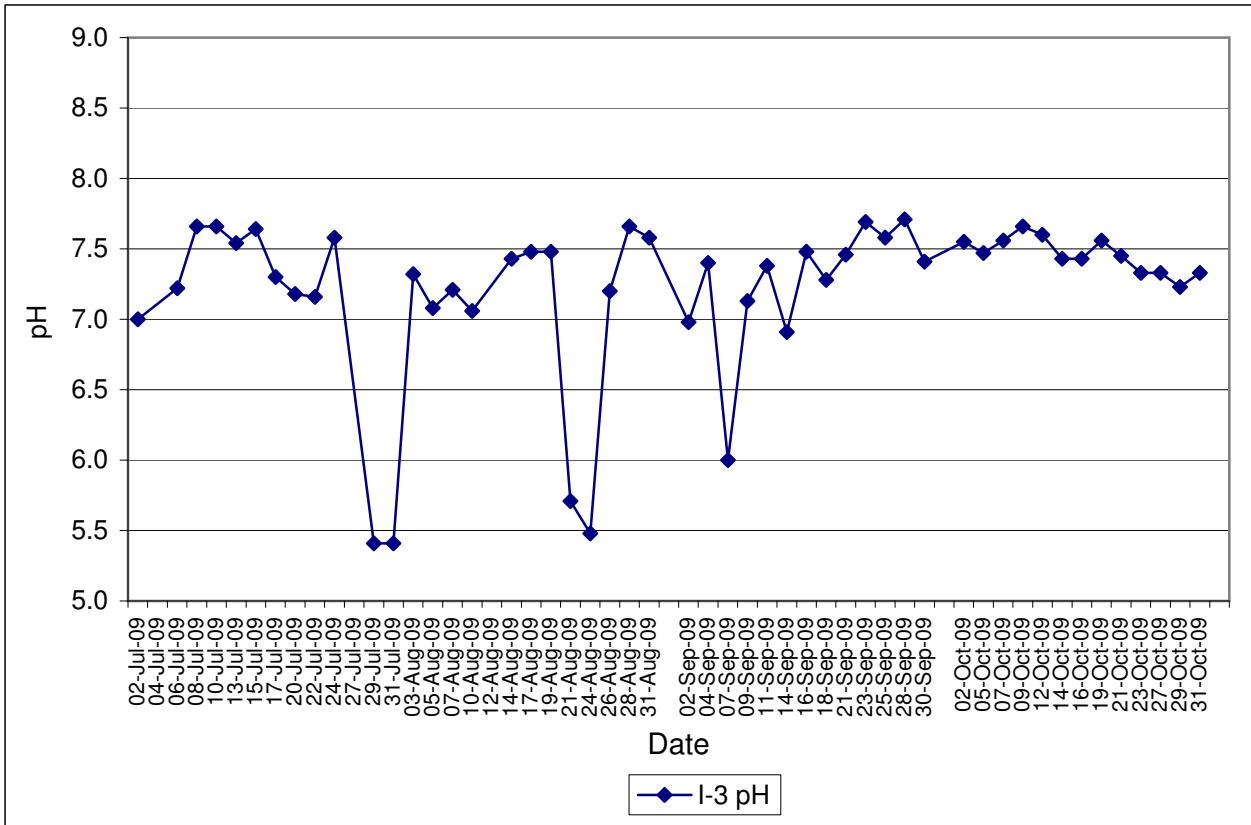
Contract No. DC/2007/12 - Design and Construction of Tsuen Wan Drainage Tunnel
Water Quality Results at Hong Hoi Chee Hong Temple (I-2)
Jul-09 to Oct-09



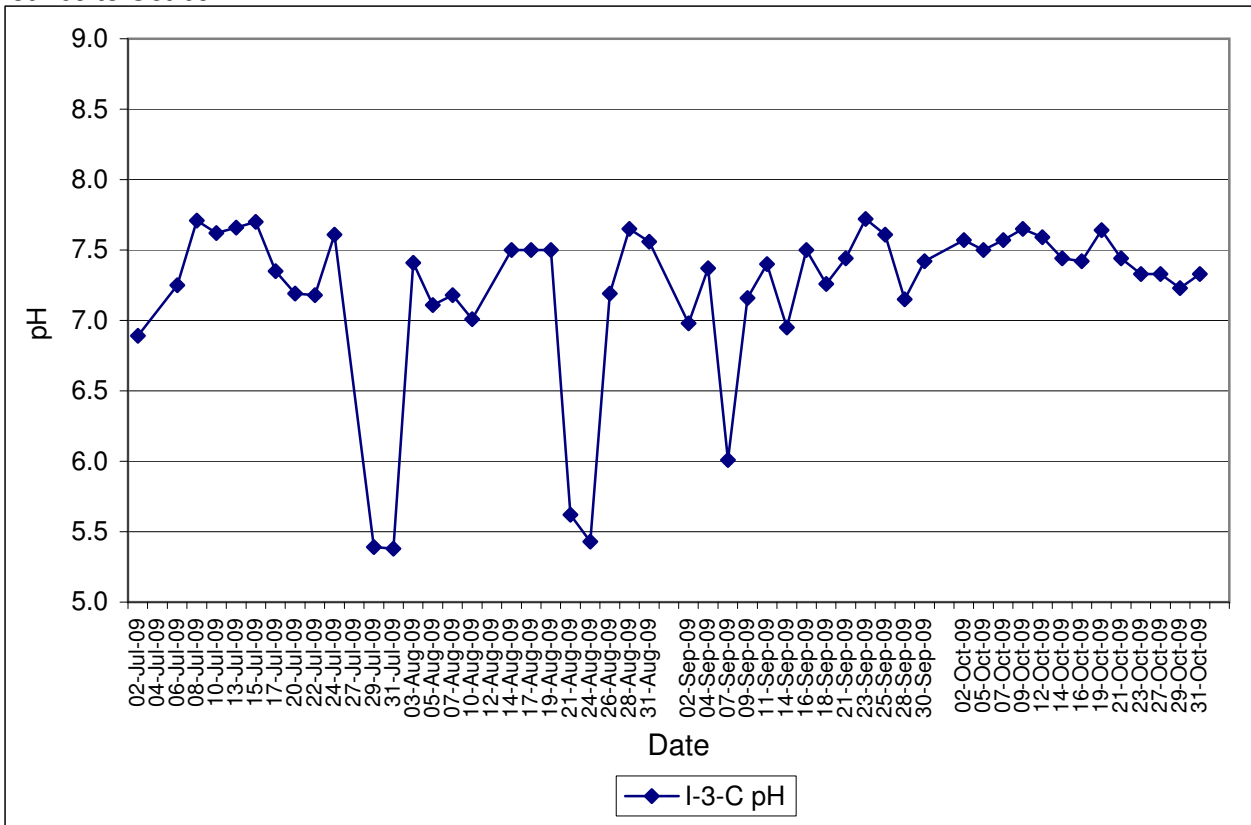
Contract No. DC/2007/12 - Design and Construction of Tsuen Wan Drainage Tunnel
Water Quality Results at Hong Hoi Chee Hong Temple (I-2-C)
Jul-09 to Oct-09



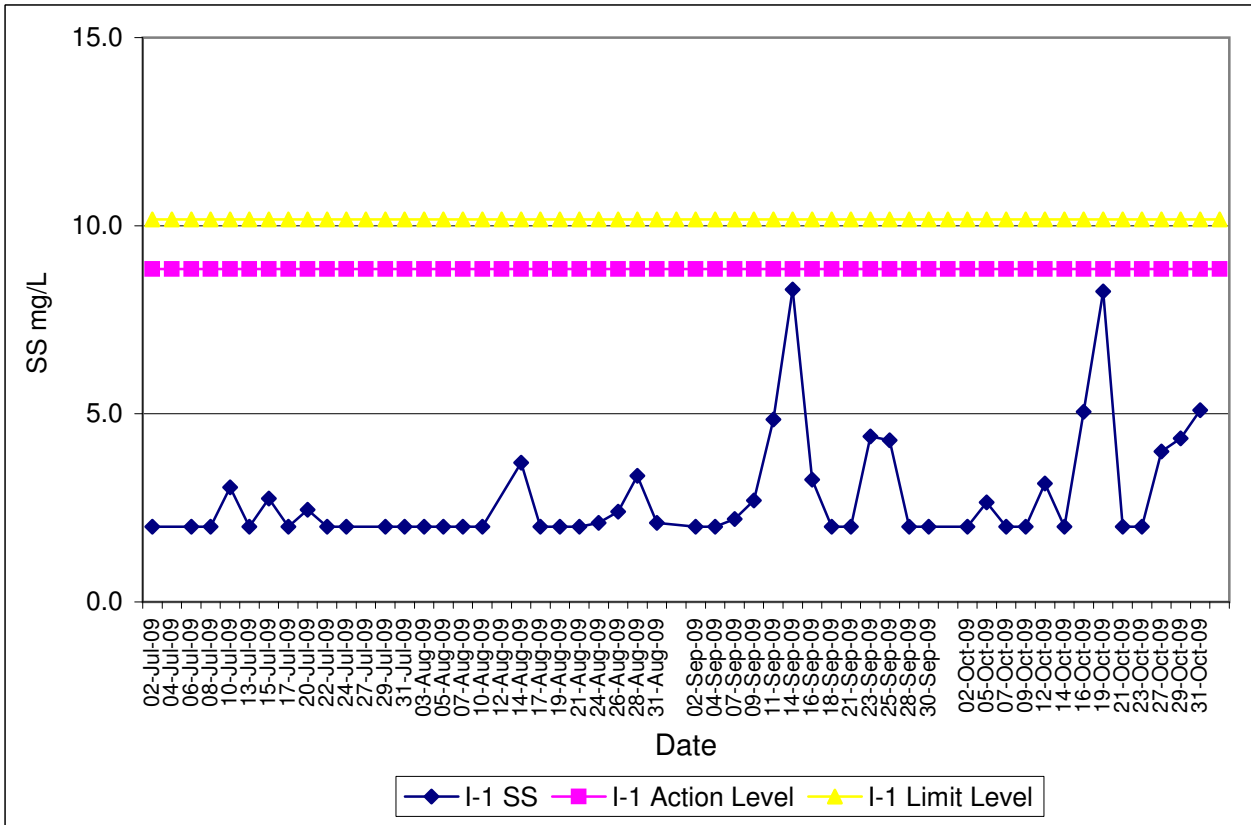
Contract No. DC/2007/12 - Design and Construction of Tsuen Wan Drainage Tunnel
Water Quality Results at Squatters (I-3)
Jul-09 to Oct-09



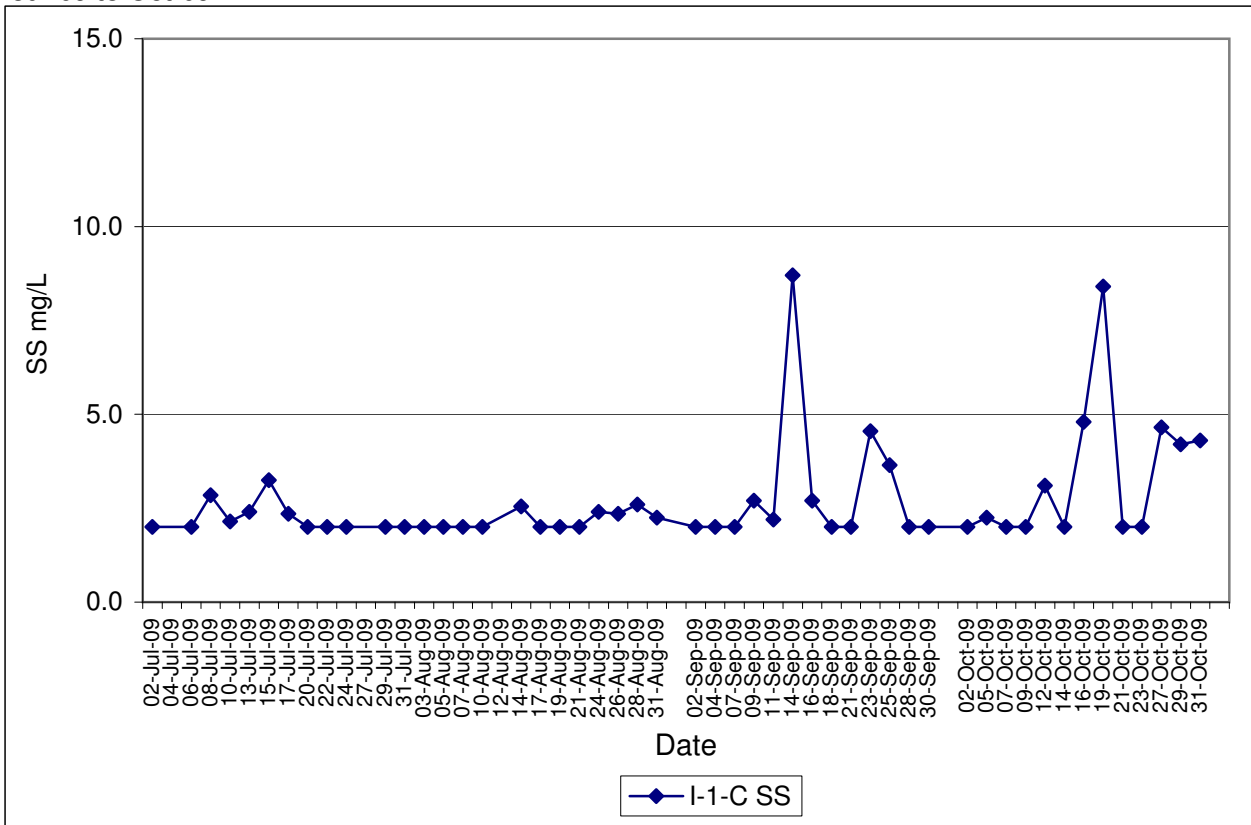
Contract No. DC/2007/12 - Design and Construction of Tsuen Wan Drainage Tunnel
Water Quality Results at Squatters (I-3-C)
Jul-09 to Oct-09



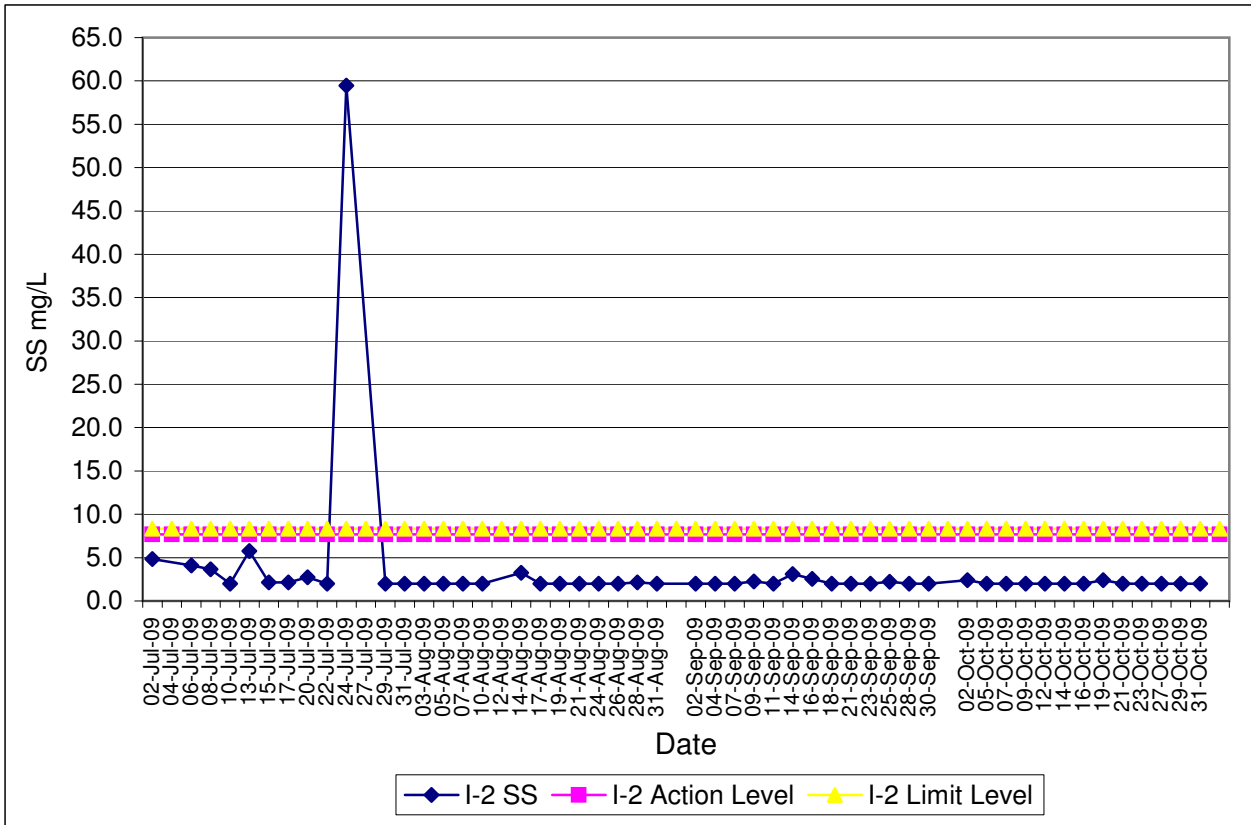
**Contract No. DC/2007/12 - Design and Construction of Tsuen Wan Drainage Tunnel
Water Quality Results at Sik Sik Yuen Ho Fung College (I-1)
Jul-09 to Oct-09**



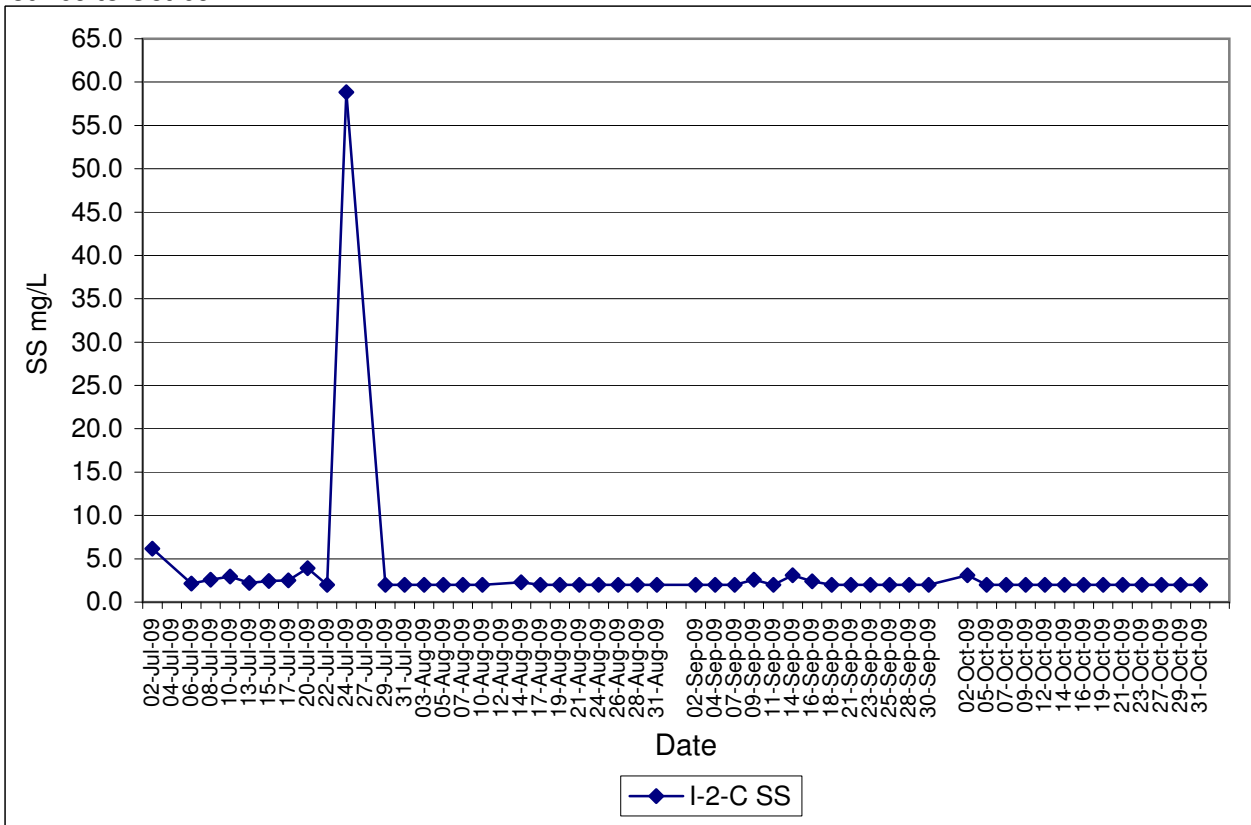
**Contract No. DC/2007/12 - Design and Construction of Tsuen Wan Drainage Tunnel
Water Quality Results at Sik Sik Yuen Ho Fung College (I-1-C)
Jul-09 to Oct-09**



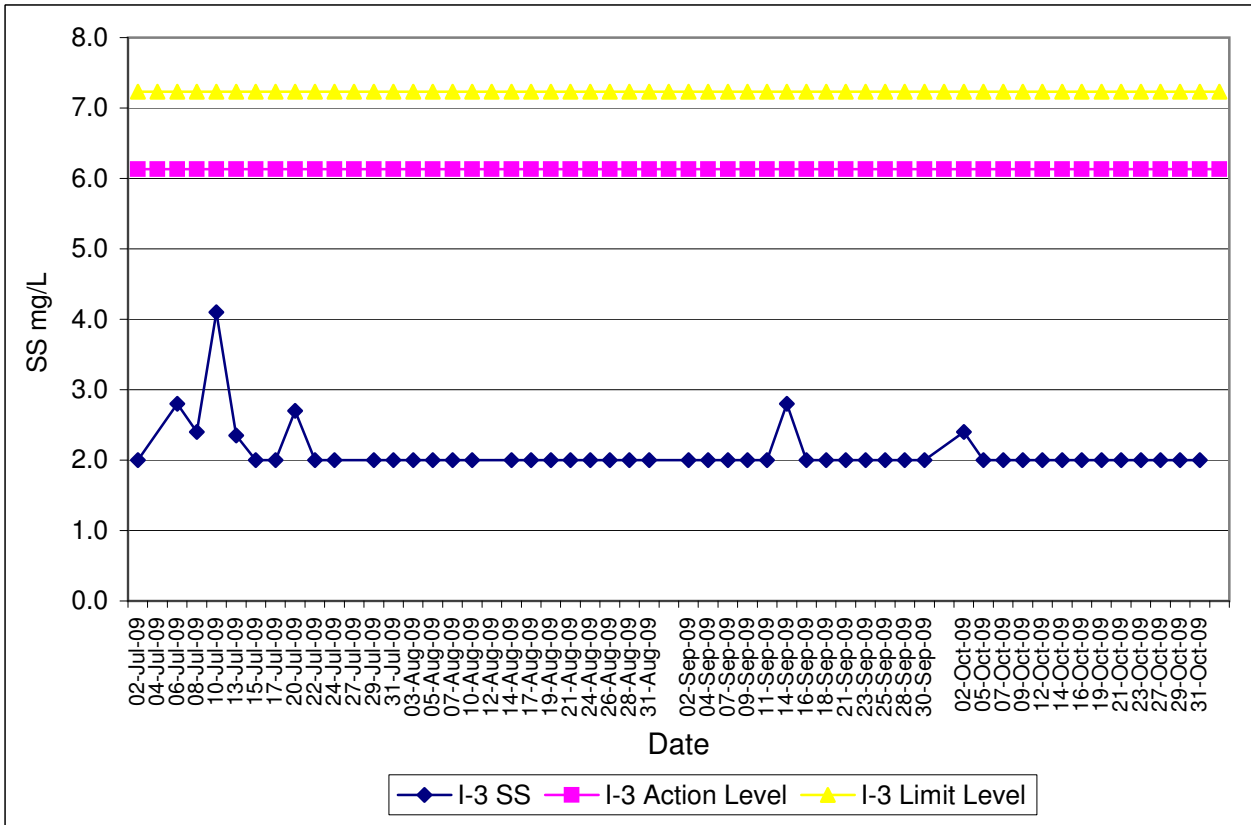
Contract No. DC/2007/12 - Design and Construction of Tsuen Wan Drainage Tunnel
Water Quality Results at Hong Hoi Chee Hong Temple (I-2)
Jul-09 to Oct-09



Contract No. DC/2007/12 - Design and Construction of Tsuen Wan Drainage Tunnel
Water Quality Results at Hong Hoi Chee Hong Temple (I-2-C)
Jul-09 to Oct-09



Contract No. DC/2007/12 - Design and Construction of Tsuen Wan Drainage Tunnel
Water Quality Results at Squatters (I-3)
Jul-09 to Oct-09



Contract No. DC/2007/12 - Design and Construction of Tsuen Wan Drainage Tunnel
Water Quality Results at Squatters (I-3-C)
Jul-09 to Oct-09

