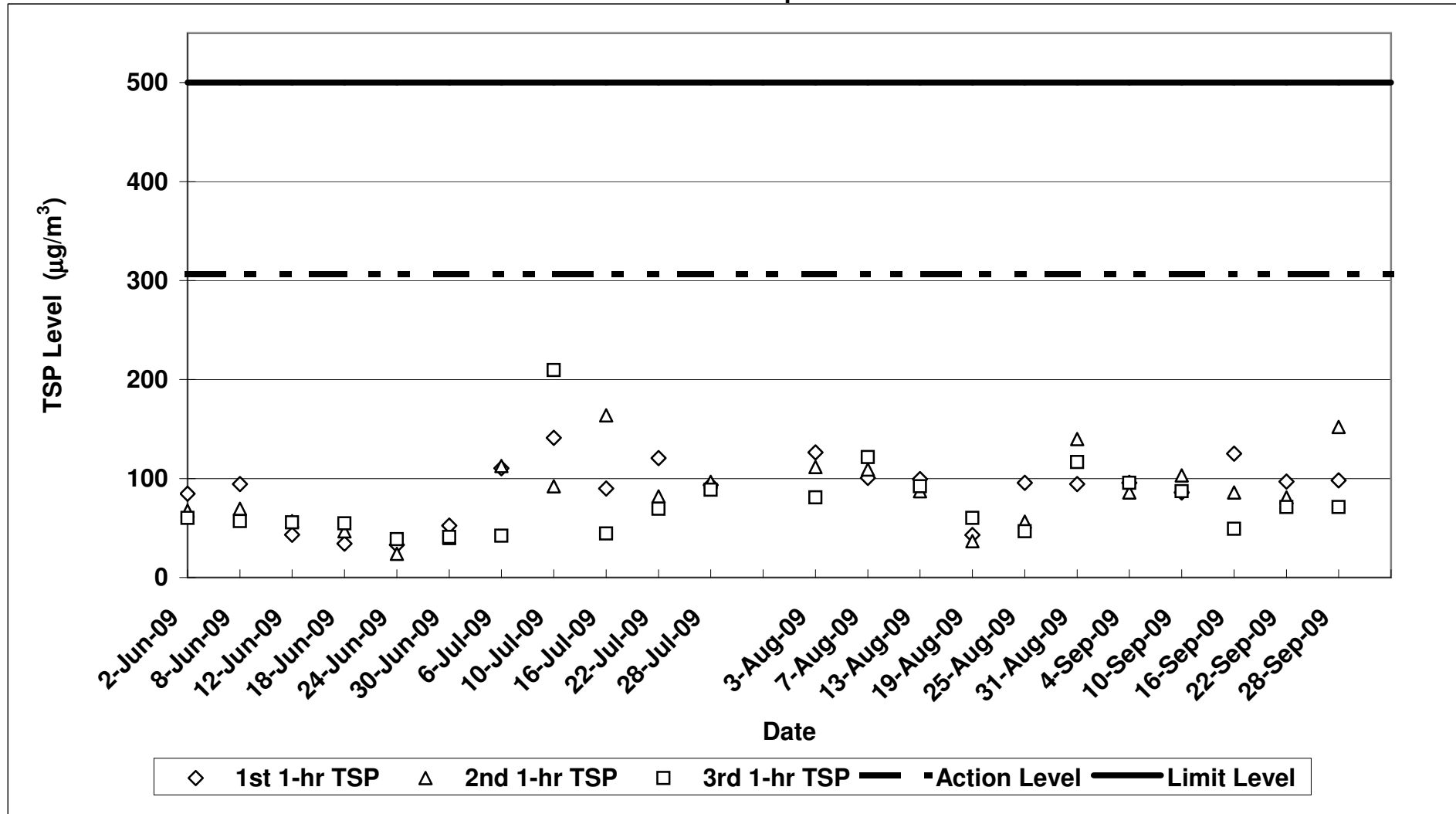


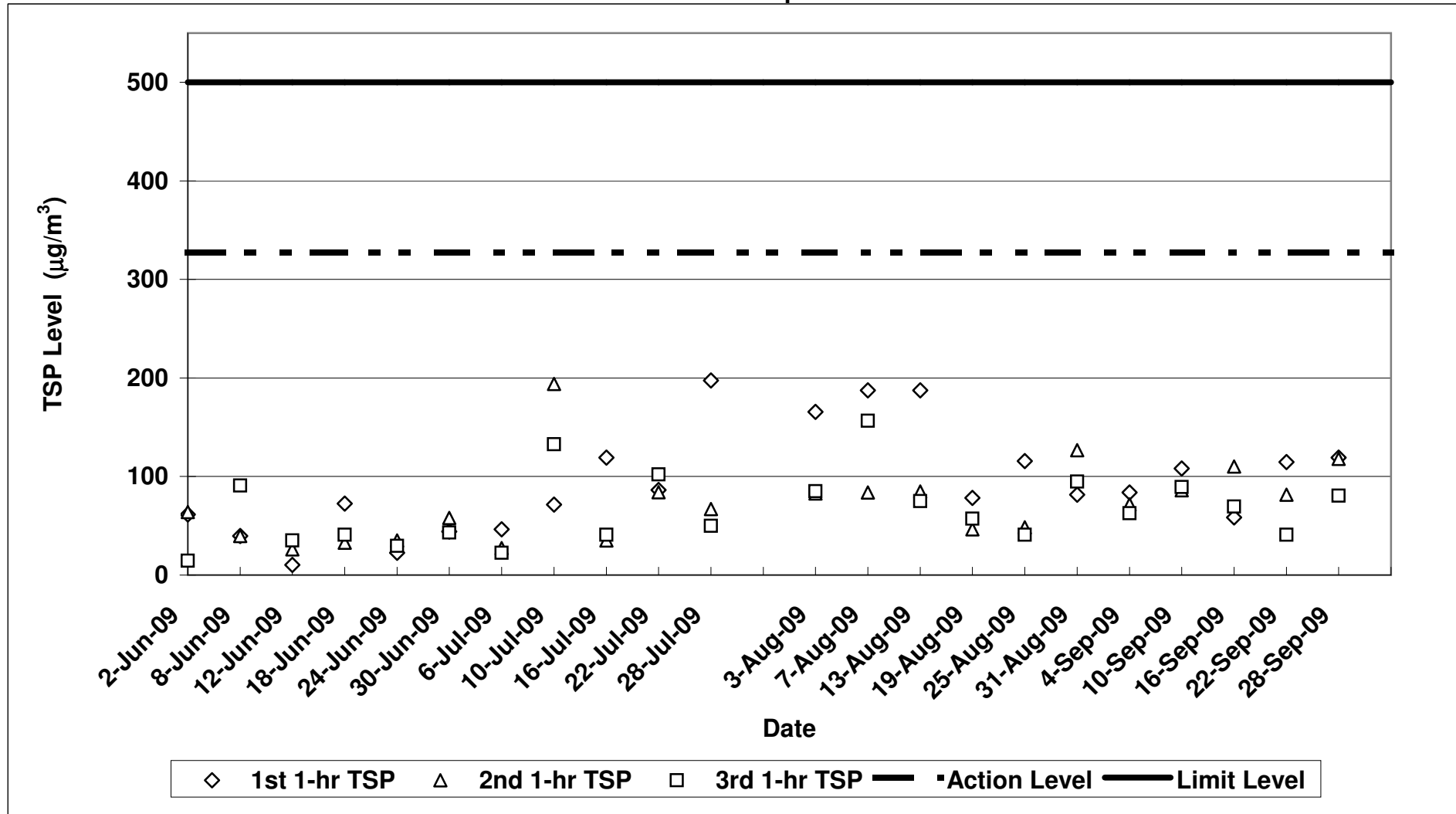
Air Quality Impact Monitoring Results (1-Hour TSP)

Location	Monitoring Date	Weather Conditions	Wind Speed with Direction (m/s)	Temp (°C)	Timer-I (m)	Timer-F (m)	Time (mins)	Flow-I (CFM)	Flow-F (CFM)	Flow-I (m³/min)	Flow-F (m³/min)	Flow-avg (m³/min)	Volume (m³)	Weight-I (g)	Weight-F (g)	Weight-diff. (g)	1-hr TSP (µg/m³)	Average 1-Hr TSP (µg/m³)	Action/Limit Levels (µg/m³)	Observation / Site Condition	Remark
Sik Sik Yuen Ho Fung College - Intake (ASR1)	04-Sep-09	Sunny	0.3E	33	580342	580442	60.0	40	40	1.36	1.36	1.36	81.47	2.8326	2.8404	0.0078	95.7	92.5	306.6/500	Breaking by backhoe,excavation work	Traffic
		Sunny	0.3E	33	580442	580542	60.0	40	40	1.36	1.36	1.36	81.47	2.8234	2.8304	0.0070	85.9				
		Sunny	0.3E	33	580542	580642	60.0	40	40	1.36	1.36	1.36	81.47	2.8420	2.8498	0.0078	95.7				
	10-Sep-09	Cloudy	1.2E	31	580642	580742	60.0	40	40	1.36	1.36	1.36	81.47	2.8251	2.8321	0.0070	85.9	92.1	306.6/500	Breaking by backhoe,excavation work	Traffic
		Cloudy	1.2E	31	580742	580842	60.0	40	40	1.36	1.36	1.36	81.47	2.8316	2.8400	0.0084	103.1				
		Cloudy	1.2E	31	580842	580942	60.0	40	40	1.36	1.36	1.36	81.47	2.8167	2.8236	0.0071	87.1				
	16-Sep-09	Cloudy	0.3E	26	580942	581042	60.0	40	40	1.36	1.36	1.358	81.47	2.8274	2.8378	0.0102	125.2	86.7	306.6/500	Breaking by backhoe,excavation work	Traffic
		Cloudy	0.3E	26	581042	581142	60.0	40	40	1.36	1.36	1.36	81.47	2.7970	2.8040	0.0070	85.9				
		Cloudy	0.3E	26	581142	581242	60.0	40	40	1.36	1.36	1.36	81.47	2.8018	2.8058	0.0040	49.1				
	22-Sep-09	Sunny	0.8E	30	581242	581342	60.0	40	40	1.36	1.36	1.36	81.47	2.8422	2.8501	0.0079	97.0	83.1	306.6/500	Breaking by backhoe,excavation work	Traffic
		Sunny	0.8E	30	581342	581442	60.0	40	40	1.36	1.36	1.36	81.47	2.8315	2.8381	0.0066	81.0				
		Sunny	0.8E	30	581442	581542	60.0	40	40	1.36	1.36	1.36	81.47	2.8470	2.8528	0.0058	71.2				
28-Sep-09	Cloudy	0.8E	27	581542	581642	60.0	40	40	1.36	1.36	1.36	81.47	2.9301	2.9381	0.0080	98.2	107.2	306.6/500	Breaking by backhoe,excavation work	Traffic	
	Cloudy	0.8E	27	581642	581742	60.0	40	40	1.36	1.36	1.36	81.47	2.9181	2.9305	0.0124	152.2					
	Cloudy	0.8E	27	581742	581842	60.0	40	40	1.36	1.36	1.36	81.47	2.9062	2.9120	0.0058	71.2					
-	-	-	-	-	-	-	-	-	-	-	-	-	-	-	-	-	-	-	-	-	-
Hong Hoi Chee Hong Temple - Intake (ASR3)	04-Sep-09	Sunny	0.2E	33	548980	548990	60.0	40	40	1.51	1.51	1.51	90.71	2.8398	2.8464	0.0076	83.8	72.8	327.4/500	Breaking by backhoe	Traffic
		Sunny	0.2E	33	548990	549000	60.0	40	40	1.51	1.51	1.51	90.71	2.8296	2.8361	0.0065	71.7				
		Sunny	0.2E	33	549000	549100	60.0	40	40	1.51	1.51	1.51	90.71	2.8288	2.8345	0.0057	62.8				
	10-Sep-09	Cloudy	0.5E	31	549100	549200	60.0	40	40	1.51	1.51	1.51	90.71	2.8237	2.8335	0.0098	108.0	94.4	327.4/500	Breaking by backhoe	Traffic
		Cloudy	0.5E	31	549200	549300	60.0	40	40	1.51	1.51	1.51	90.71	2.8290	2.8368	0.0078	86.0				
		Cloudy	0.5E	31	549300	549400	60.0	40	40	1.51	1.51	1.51	90.71	2.8355	2.8436	0.0081	89.3				
	16-Sep-09	Cloudy	0.3E	26	549400	549500	60.0	40	40	1.51	1.51	1.51	90.71	2.8026	2.8079	0.0053	58.4	78.4	327.4/500	Drilling work	Traffic
		Cloudy	0.3E	26	549500	549600	60.0	40	40	1.51	1.51	1.51	90.71	2.8150	2.8250	0.0100	110.2				
		Cloudy	0.3E	26	549600	549700	60.0	40	40	1.51	1.51	1.51	90.71	2.8165	2.8228	0.0063	69.5				
	22-Sep-09	Sunny	0.3E	30	549700	549800	60.0	40	40	1.51	1.51	1.51	90.71	2.8535	2.8639	0.0104	114.6	79.0	327.4/500	Drilling work, breaking by backhoe	Traffic
		Sunny	0.3E	30	549800	549900	60.0	40	40	1.51	1.51	1.51	90.71	2.8331	2.8405	0.0074	81.6				
		Sunny	0.3E	30	549900	550000	60.0	40	40	1.51	1.51	1.51	90.71	2.8348	2.8385	0.0037	40.8				
28-Sep-09	Cloudy	0.8E	27	550000	550100	60.0	40	40	1.51	1.51	1.51	90.71	2.7682	2.7790	0.0108	119.1	105.8	327.4/500	Breaking by backhoe	Traffic	
	Cloudy	0.8E	27	550100	550200	60.0	40	40	1.51	1.51	1.51	90.71	2.8221	2.8328	0.0107	118.0					
	Cloudy	0.8E	27	550200	550300	60.0	40	40	1.51	1.51	1.51	90.71	2.8028	2.8101	0.0073	80.5					
-	-	-	-	-	-	-	-	-	-	-	-	-	-	-	-	-	-	-	-	-	-
Long Beach Gardens - Outfall (ASR8)	04-Sep-09	Sunny	0.5E	33	603880	603980	60.0	40	40	1.24	1.24	1.24	74.14	2.8354	2.8506	0.0152	205.0	151.5	336.6/500	Breaking by backhoe,excavation work	Traffic
		Sunny	0.5E	33	603980	604080	60.0	40	40	1.24	1.24	1.24	74.14	2.8127	2.8220	0.0093	125.4				
		Sunny	0.5E	33	604080	604180	60.0	40	40	1.24	1.24	1.24	74.14	2.8148	2.8240	0.0092	124.1				
	10-Sep-09	Cloudy	0.5E	31	604180	604280	60.0	40	40	1.24	1.24	1.24	74.14	2.8653	2.8783	0.0130	175.3	148.8	336.6/500	Breaking by backhoe,excavation work	Traffic
		Cloudy	0.5E	31	604280	604380	60.0	40	40	1.24	1.24	1.24	74.14	2.8144	2.8246	0.0102	137.6				
		Cloudy	0.5E	31	604380	604480	60.0	40	40	1.24	1.24	1.24	74.14	2.8588	2.8687	0.0099	133.5				
	16-Sep-09	Cloudy	0.8E	26	604480	604580	60.0	40	40	1.24	1.24	1.24	74.14	2.7965	2.8066	0.0101	136.2	121.8	336.6/500	Breaking by backhoe,excavation work	Traffic
		Cloudy	0.8E	26	604580	604680	60.0	40	40	1.24	1.24	1.24	74.14	2.8271	2.8354	0.0083	112.0				
		Cloudy	0.8E	26	604680	604780	60.0	40	40	1.24	1.24	1.24	74.14	2.8185	2.8272	0.0087	117.3				
	22-Sep-09	Sunny	0.5E	30	604780	604880	60.0	40	40	1.24	1.24	1.24	74.14	2.8724	2.8801	0.0077	103.9	89.0	336.6/500	Breaking by backhoe,excavation work	Traffic
		Sunny	0.5E	30	604880	604980	60.0	40	40	1.24	1.24	1.24	74.14	2.8574	2.8679	0.0105	141.6				
		Sunny	0.5E	30	604980	605080	60.0	40	40	1.24	1.24	1.24	74.14	2.8024	2.8040	0.0016	21.6				
28-Sep-09	Cloudy	0.8E	27	605080	605180	60.0	40	40	1.24	1.24	1.24	74.14	2.8046	2.8140	0.0094	126.8	135.3	336.6/500	Breaking by backhoe,excavation work	Traffic	
	Cloudy	0.8E	27	605180	605280	60.0	40	40	1.24	1.24	1.24	74.14	2.8081	2.8175	0.0094	126.8					
	Cloudy	0.8E	27	605280	605380	60.0	40	40	1.24	1.24	1.24	74.14	2.8601	2.8714	0.0113	152.4					
-	-	-	-	-	-	-	-	-	-	-	-	-	-	-	-	-	-	-	-	-	-
Greenview Terrace - Outfall (ASR9)	04-Sep-09	Sunny	0.3E	33	535780	535880	60.0	40	40	1.44	1.44	1.44	86.44	2.8933	2.9036	0.0103	119.2	123.0	329.2/500	Breaking by backhoe,excavation work	Traffic
		Sunny	0.3E	33	535880	535980	60.0	40	40	1.44	1.44	1.44	86.44	2.8298	2.8402	0.0104	120.3				
		Sunny	0.3E	33	535980	536080	60.0	40	40	1.44	1.44	1.44	86.44	2.8719	2.8831	0.0112	129.6				
	10-Sep-09	Cloudy	1.5E	31	536080	536180	60.0	40	40	1.44	1.44	1.44	86.44	2.8662	2.8800	0.0138	159.6	108.9	329.2/500	Breaking by backhoe,soil nailing	Traffic
		Cloudy	1.5E	31	536180	536281	60.0	40	40	1.44	1.44	1.44	87.30	2.8620	2.8689	0.0069	79.0				
		Cloudy	1.5E	31	536281	536381	60.0	40	40	1.44	1.44	1.44	86.44	2.8279	2.8355	0.0076	87.9				
	16-Sep-09	Cloudy	0.5E	26	536380	536480	60.0	40	40	1.44	1.44	1.44	86.44	2.8430	2.8557	0.0127	146.9	127.6	329.2/500	Drilling work,Breaking by backhoe	Traffic
		Cloudy	0.5E	26	536480	536580	60.0	40	40	1.44	1.44	1.44	86.44	2.7930	2.7955	0.0025	144.6				
		Cloudy	0.5E	26	536580	536680	60.0	40	40	1.44	1.44	1.44	86.44	2.8178	2.8257	0.0079	91.4				
	22-Sep-09	Sunny	0.5E	30	536680	536780	60.0	40	40	1.44	1.44	1.44	86.44	2.828	2.8362	0.0082	94.9	73.3	329.2/500	Excavation work	Traffic
		Sunny	0.5E	30	536780	536880	60.0	40	40	1.44	1.44	1.44	86.44	2.8002	2.8073	0.0071	82.1				
		Sunny	0.5E	30	536880	536980	60.0	40	40	1.44	1.44	1.44	86.44	2.8122	2.8159	0.0037	42.8				
28-Sep-09	Cloudy	0.8E	27	536980	537080	60.0	40	40	1.44	1.44	1.44	86.44	2.7862	2.8006	0.0144	166.6	119.5	329.2/500	Breaking by backhoe,excavation work	Traffic	
	Cloudy	0.8E	27	537080	537180	60.0	40	40	1.44	1.44	1.44	86.44	2.8140	2.8218	0.0078	90.2					
	Cloudy	0.8E	27	537180	537280	60.0	40	40</													

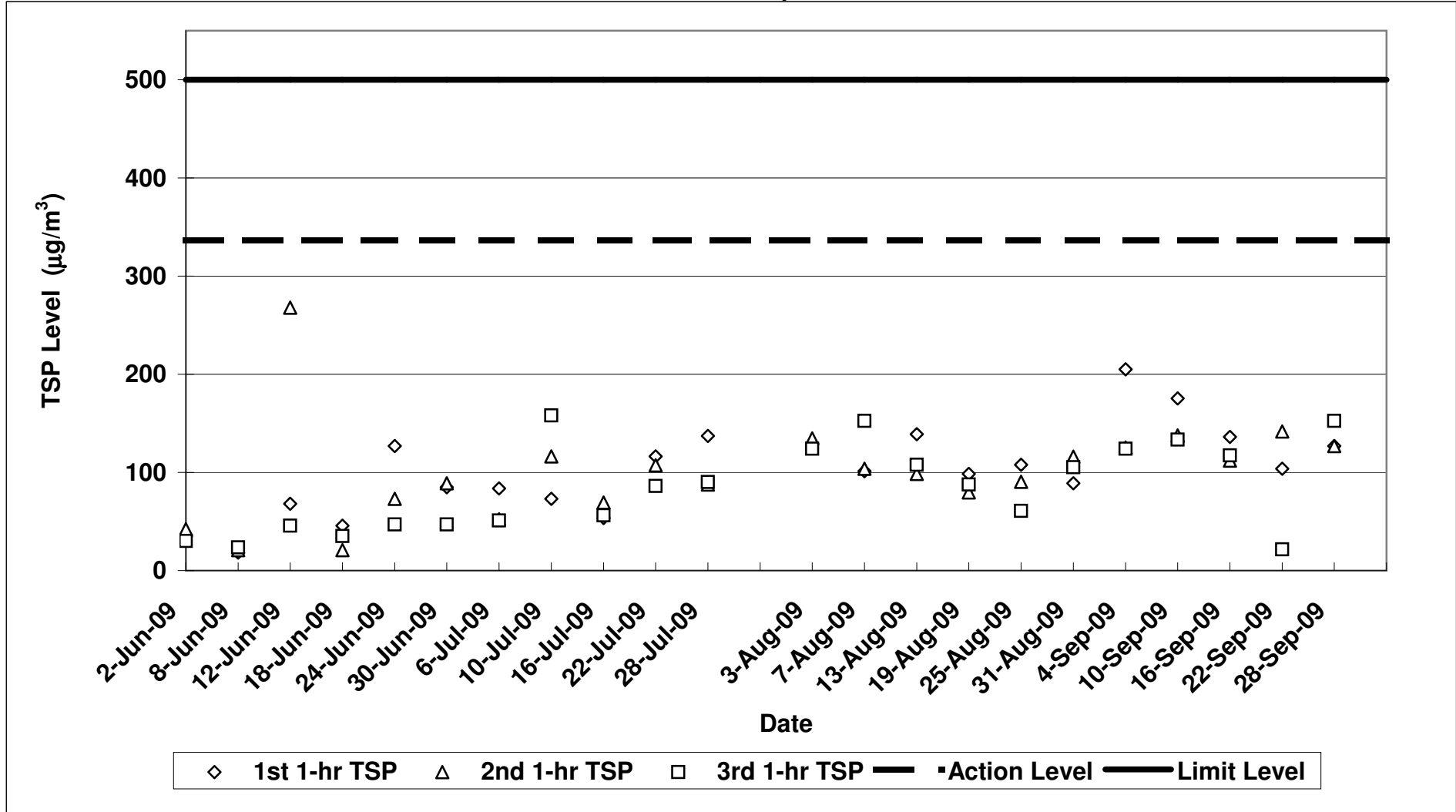
**Contract No. DC/2007/12 - Design and Construction of Tsuen Wan Drainage Tunnel
 Air Quality Monitoring (1-hr TSP) Results at Sik Sik Yuen Ho Fung College - Intake (ASR1)
 Jun-09 to Sep-09**



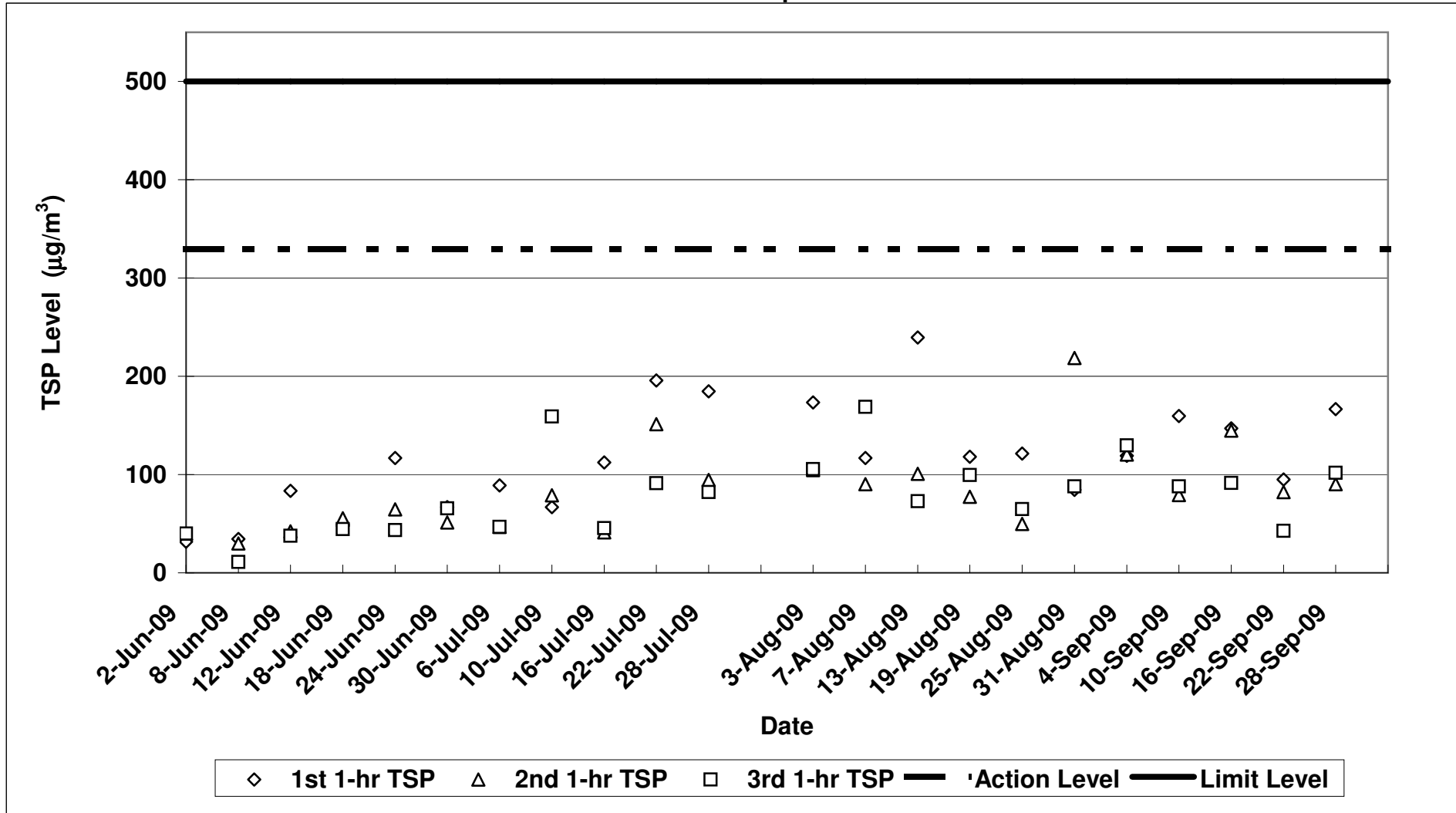
**Contract No. DC/2007/12 - Design and Construction of Tsuen Wan Drainage Tunnel
 Air Quality Monitoring (1-hr TSP) Results at Hong Hoi Chee Hong Temple - Intake (ASR3)
 Jun-09 to Sep-09**



**Contract No. DC/2007/12 - Design and Construction of Tsuen Wan Drainage Tunnel
 Air Quality Monitoring (1-hr TSP) Results at Long Beach Gardens - Outfall (ASR8)
 Jun-09 to Sep-09**



**Contract No. DC/2007/12 - Design and Construction of Tsuen Wan Drainage Tunnel
 Air Quality Monitoring (1-hr TSP) Results at Greenview Terrance - Outfall (ASR9)
 Jun-09 to Sep-09**



Contract No. DC/2007/12 - Design and Construction of Tsuen Wan Drainage Tunnel

Noise Impact Monitoring Results

Monitoring Locations	Date	Weather Conditions	Temperature (°C)	Wind Speed (m/s)	Wind Direction	Start Time	End Time	BL ¹ dB(A)	LL ² dB(A)	Leq(30min) dB(A)	L10(30min) dB(A)	L90(30min) dB(A)	CNL ³ dB(A)	Observation / Site Condition	Remark
Sik Sik Yuen Ho Fung College NSR 1	10-Sep-09	Sunny	31	1.2	E	14:01	14:31	66.1	70	63.7	66.2	59.8	-	Excavation work	Traffic noise
	16-Sep-09	Cloudy	27	0.3	E	14:50	15:20		70	68.8	70.6	66.0	-	Breaking by backhoe,excavation work	Traffic noise
	22-Sep-09	Sunny	30	0.8	E	16:07	16:37		70	68.5	69.9	65.5	-	Breaking by backhoe,excavation work	Traffic noise
	28-Sep-09	Cloudy	27	0.5	E	11:15	11:45		70	67.6	69.2	65.2	-	Breaking by backhoe,excavation work	Traffic noise
	-	-	-	-	-	-	-		-	-	-	-	-	-	-
Hong Hoi Chee Hong Temple NSR 3	10-Sep-09	Sunny	31	0.5	E	14:40	15:10	57.9	75	68.4	71.8	64.0	-	Breaking by backhoe	Traffic noise, aircraft noise
	16-Sep-09	Cloudy	27	0.3	E	14:10	14:40		75	71.8	74.4	68.5	-	Drilling work	Traffic noise, aircraft noise
	22-Sep-09	Sunny	30	0.5	E	15:28	15:58		75	72.4	73.4	71.2	-	Drilling work, breaking by backhoe	Traffic noise, aircraft noise
	28-Sep-09	Cloudy	27	0.5	E	11:00	11:30		75	67.6	69.0	65.2	-	Breaking by backhoe	Traffic noise
	-	-	-	-	-	-	-		75	-	-	-	-	-	-
Squatters NSR 6	10-Sep-09	Sunny	31	0.3	E	13:05	13:35	61.2	75	55.8	59.0	50.6	-	Excavation work	Aircraft noise
	16-Sep-09	Cloudy	27	0.2	E	13:20	13:50		75	55.7	56.7	54.3	-	Nil	Water fall,aircraft noise
	22-Sep-09	Sunny	30	0.3	E	11:00	11:30		75	56.2	58.0	47.3	-	Excavation work	Birds noise,aircraft noise
	28-Sep-09	Cloudy	27	0.5	E	10:12	10:42		75	55.1	58.6	47.9	-	Excavation work	Birds noise,aircraft noise
	-	-	-	-	-	-	-		-	-	-	-	-	-	-
Long Beach Gardens NSR 8	4-Sep-09*	Cloudy	27	0.2	E	11:05	11:35	60.9	75	67.9	71.3	64.5	-	Excavation work, breaking by backhoe	Traffic noise, aircraft noise
	10-Sep-09	Sunny	31	1.8	E	10:50	11:20		75	66.9	69.7	63.8	-	Excavation work	Traffic noise
	11-Sep-09*	Sunny	30	0.5	E	10:30	11:00		75	66.9	69.2	63.2	-	Breaking by backhoe,excavation work	Traffic noise
	16-Sep-09	Cloudy	27	0.8	E	16:12	16:42		75	67.1	69.3	64.0	-	Drilling work,Breaking by backhoe	Traffic noise, aircraft noise
	18-Sep-09*	Sunny	30	0.5	E	10:35	11:05		75	64.0	65.8	62.3	-	Breaking by backhoe,excavation & drilling work	Traffic noise
	22-Sep-09	Sunny	30	0.5	E	14:00	14:30		75	67.6	69.3	63.3	-	Breaking by backhoe,excavation work	Traffic noise, aircraft noise
	25-Sep-09*	Sunny	30	0.8	E	16:20	16:50		75	66.6	68.8	63.5	-	Breaking by backhoe, excavation work	Traffic noise
	28-Sep-09	Cloudy	27	0.8	E	08:45	09:15		75	67.8	71.4	61.5	-	Breaking by backhoe,excavation work	Traffic noise
Greenview Terrace NSR 9	4-Sep-09*	Cloudy	27	0.4	E	10:20	10:50	59.7	75	72.8	75.9	66.7	-	Excavation work, breaking by backhoe	Traffic noise
	10-Sep-09	Sunny	31	0.5	E	09:55	10:25		75	69.9	73.0	63.6	-	Excavation work	Traffic noise
	11-Sep-09*	Sunny	30	0.5	E	09:50	10:20		75	71.9	74.8	67.4	-	Breaking by backhoe,excavation work	Traffic noise
	16-Sep-09	Cloudy	27	0.5	E	15:30	16:00		75	71.2	74.0	65.9	-	Drilling work,Breaking by backhoe	Traffic noise, aircraft noise
	18-Sep-09*	Sunny	30	1.3	E	09:40	10:10		75	71.9	75.1	66.1	-	Breaking by backhoe,excavation & drilling work	Traffic noise, aircraft noise
	22-Sep-09	Sunny	30	0.5	E	14:38	15:08		75	73.2	76.0	66.4	-	Breaking by backhoe,excavation work	Traffic noise
	25-Sep-09*	Sunny	30	0.8	E	15:40	16:10		75	74.8	78.3	66.1	-	Breaking by backhoe,decoration at 14/F	Traffic noise
	28-Sep-09	Cloudy	27	0.8	E	09:30	10:00		75	72.4	75.1	65.1	-	Breaking by backhoe,excavation work	Traffic noise

1: Baseline Noise Level

2: Limit Level

3: Corrected Noise Level

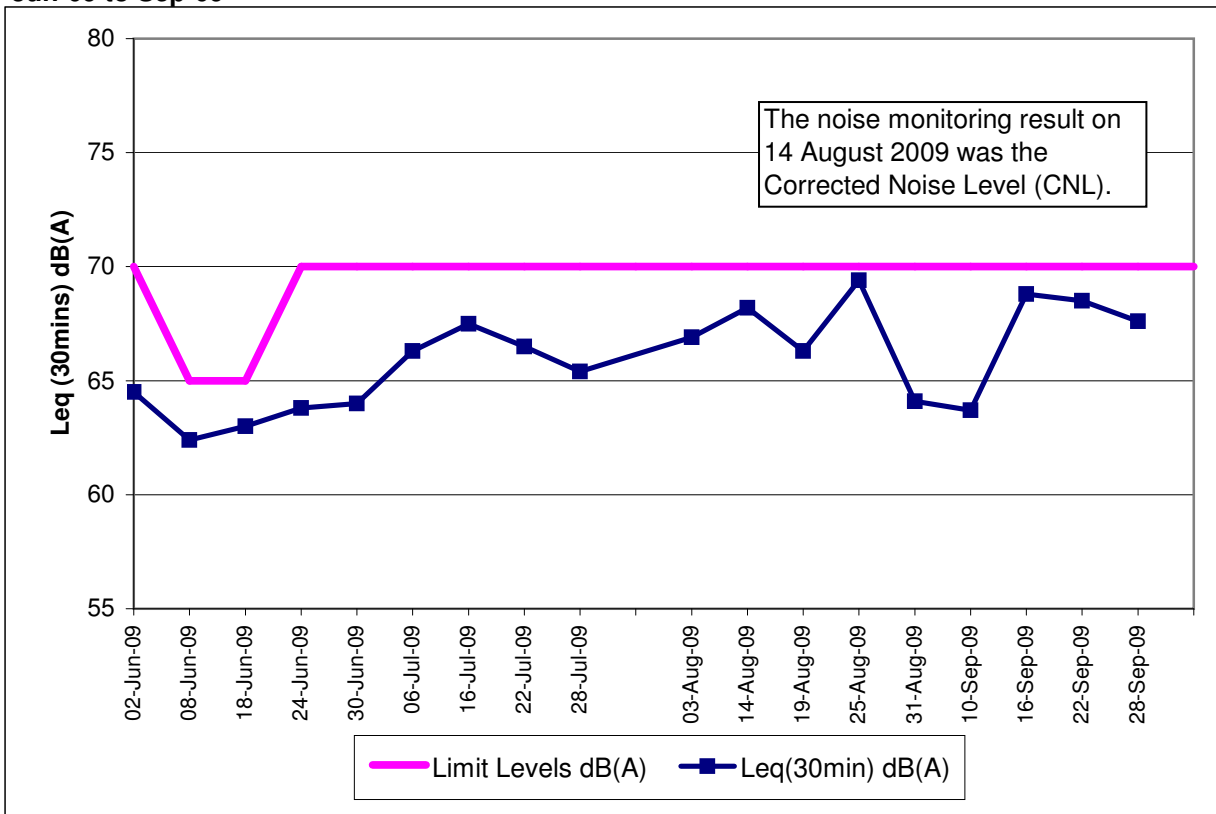
Note:

The limit level of NSR1 is 65dB(A) during school examination period.

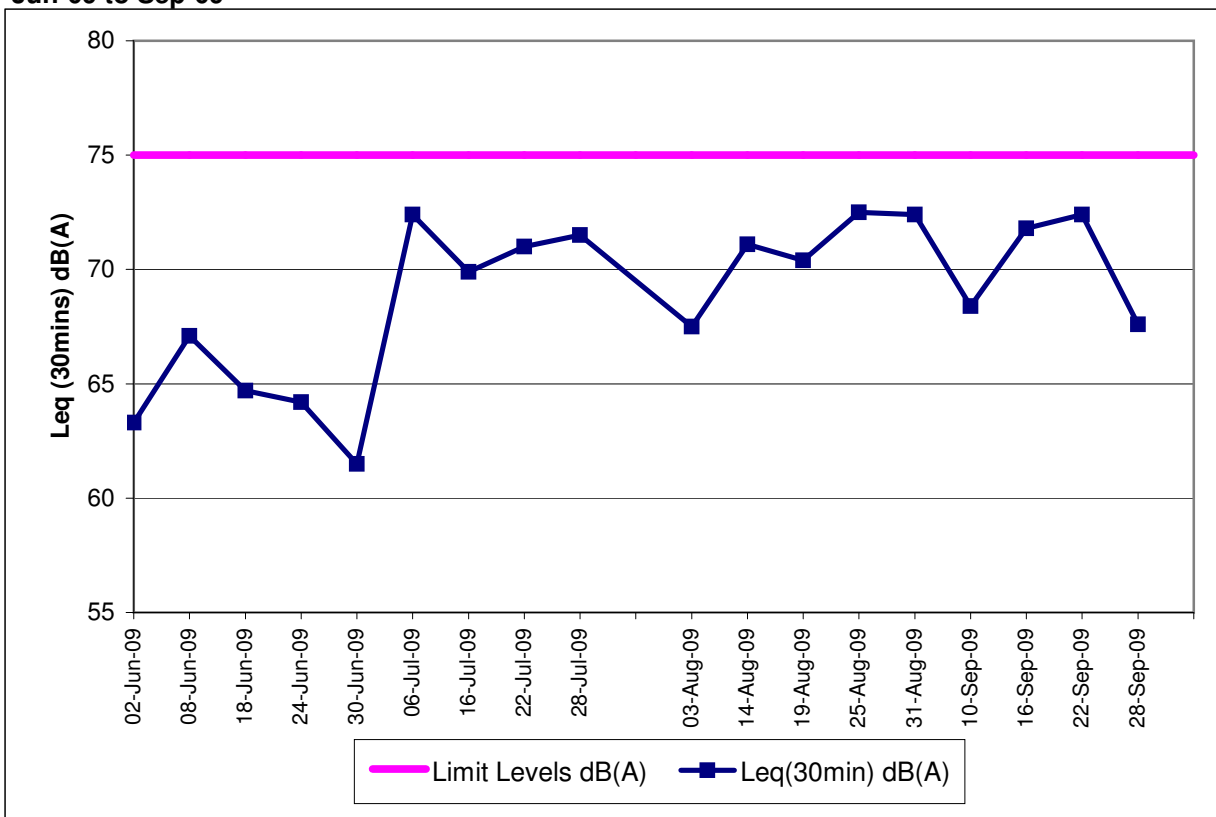
Red Bold indicates an exceedance of Limit Level

* means additional noise monitoring due to documented complaints

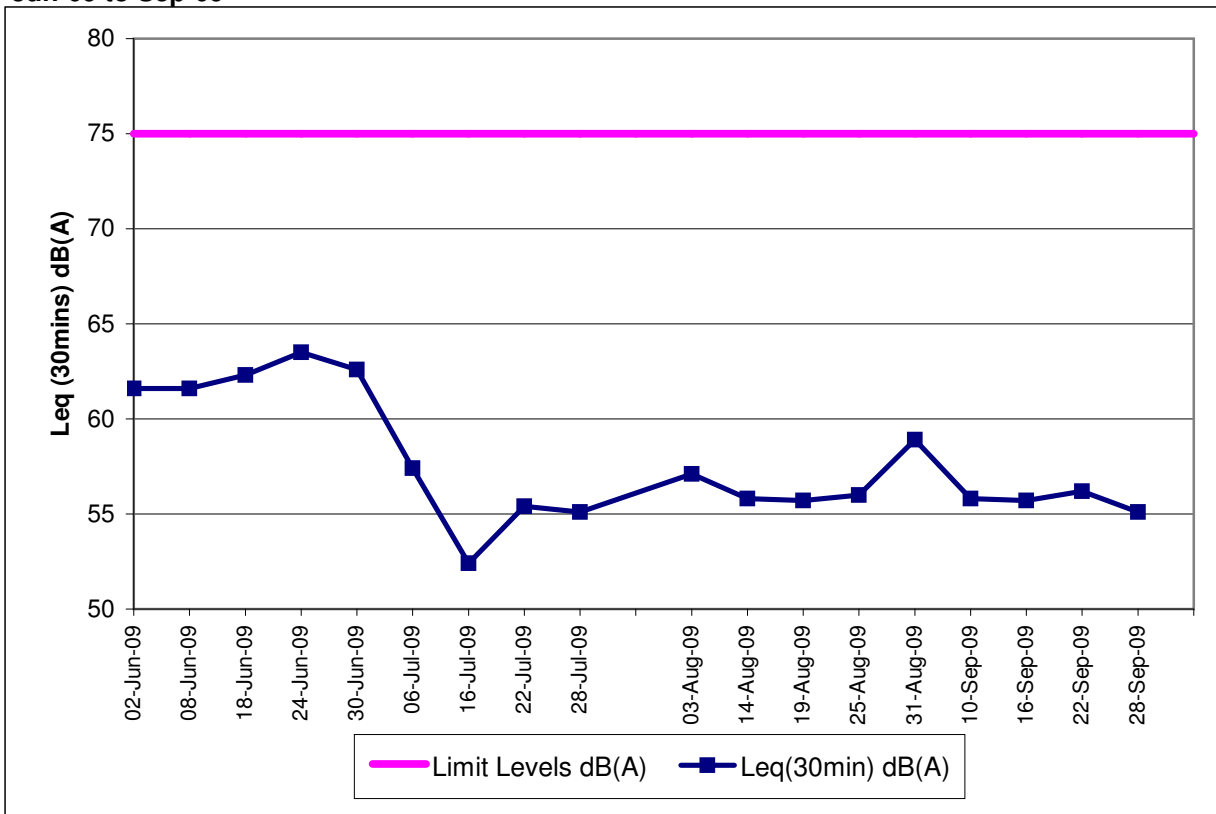
**Contract No. DC/2007/12 - Design and Construction of Tsuen Wan Drainage Tunnel
Noise Monitoring Results at Sik Sik Yuen Ho Fung College (NSR 1)
Jun-09 to Sep-09**



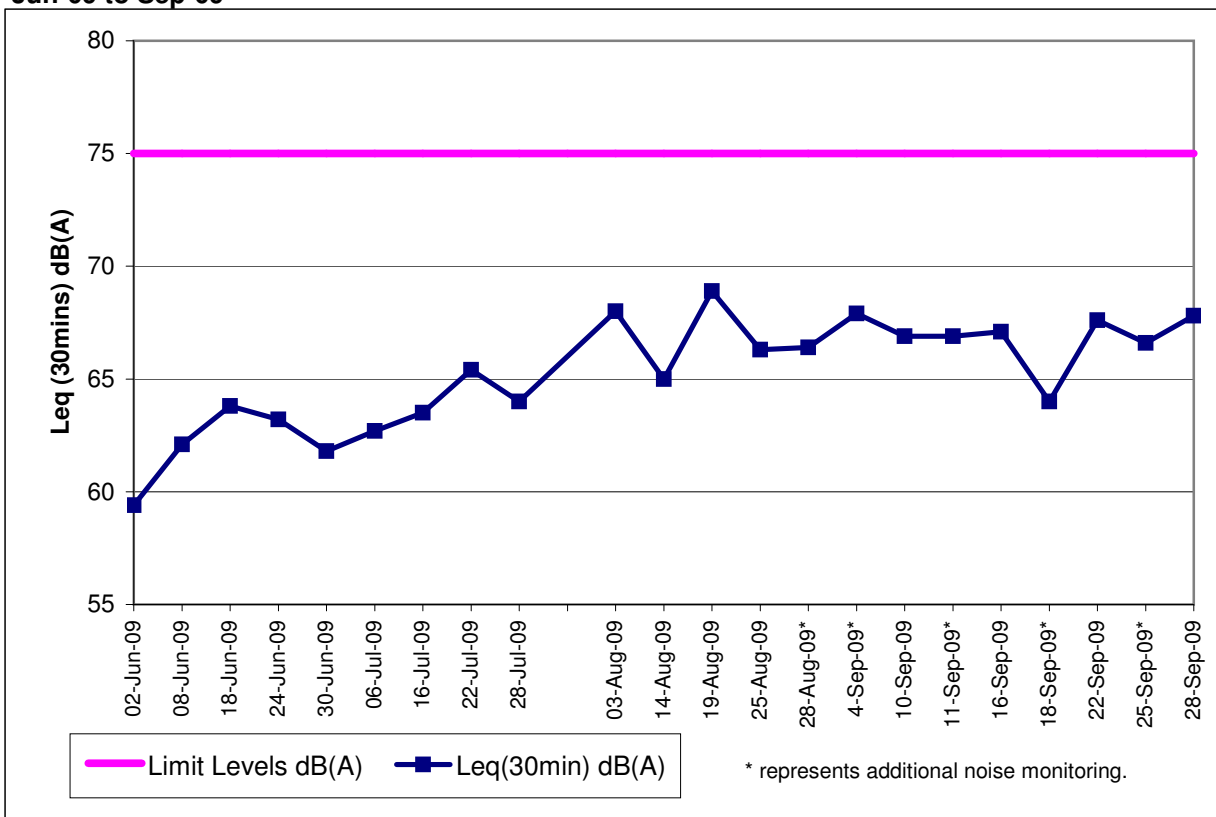
**Contract No. DC/2007/12 - Design and Construction of Tsuen Wan Drainage Tunnel
Noise Monitoring Results at Hong Hoi Chee Hong Temple (NSR 3)
Jun-09 to Sep-09**



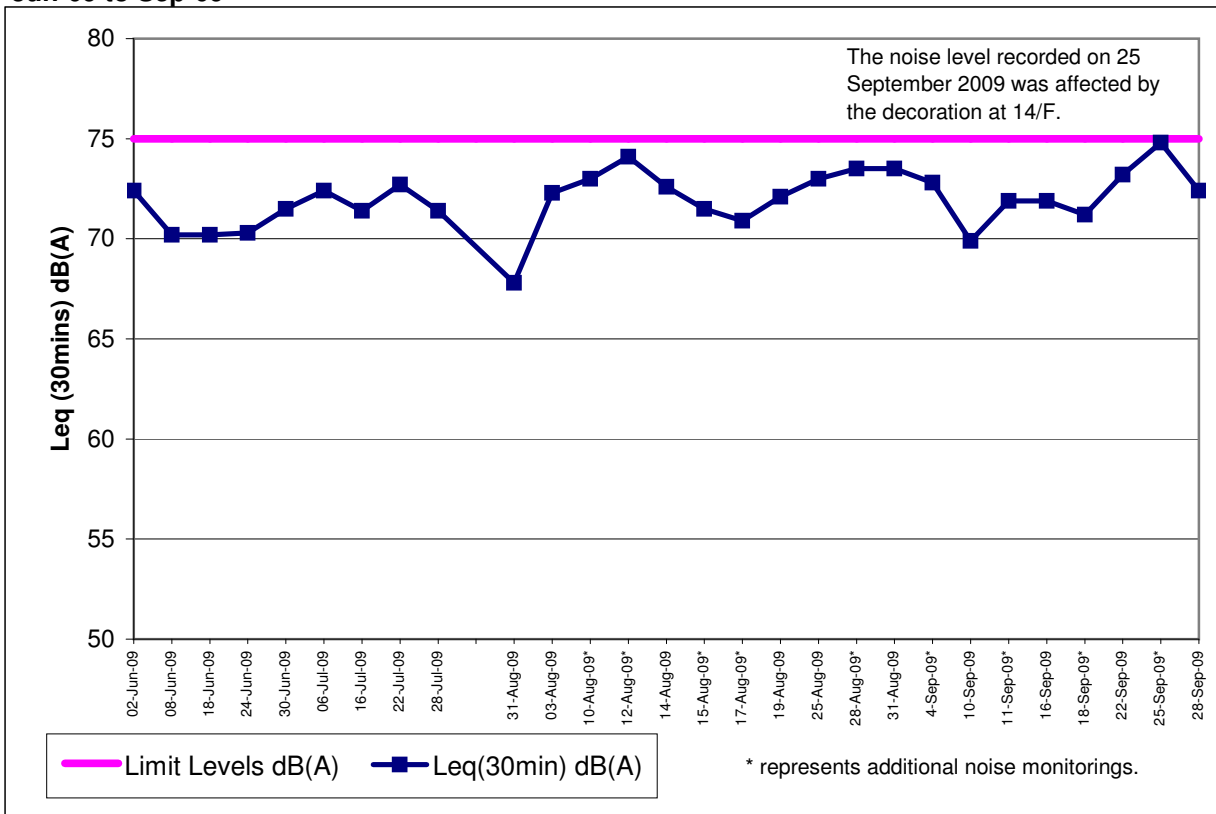
Contract No. DC/2007/12 - Design and Construction of Tsuen Wan Drainage Tunnel
Noise Monitoring Results at Squatters (NSR 6)
Jun-09 to Sep-09



Contract No. DC/2007/12 - Design and Construction of Tsuen Wan Drainage Tunnel
Noise Monitoring Results at Long Beach Gardens (NSR 8)
Jun-09 to Sep-09



**Contract No. DC/2007/12 - Design and Construction of Tsuen Wan Drainage Tunnel
 Noise Monitoring Results at Greenview Terrace (NSR 9)
 Jun-09 to Sep-09**

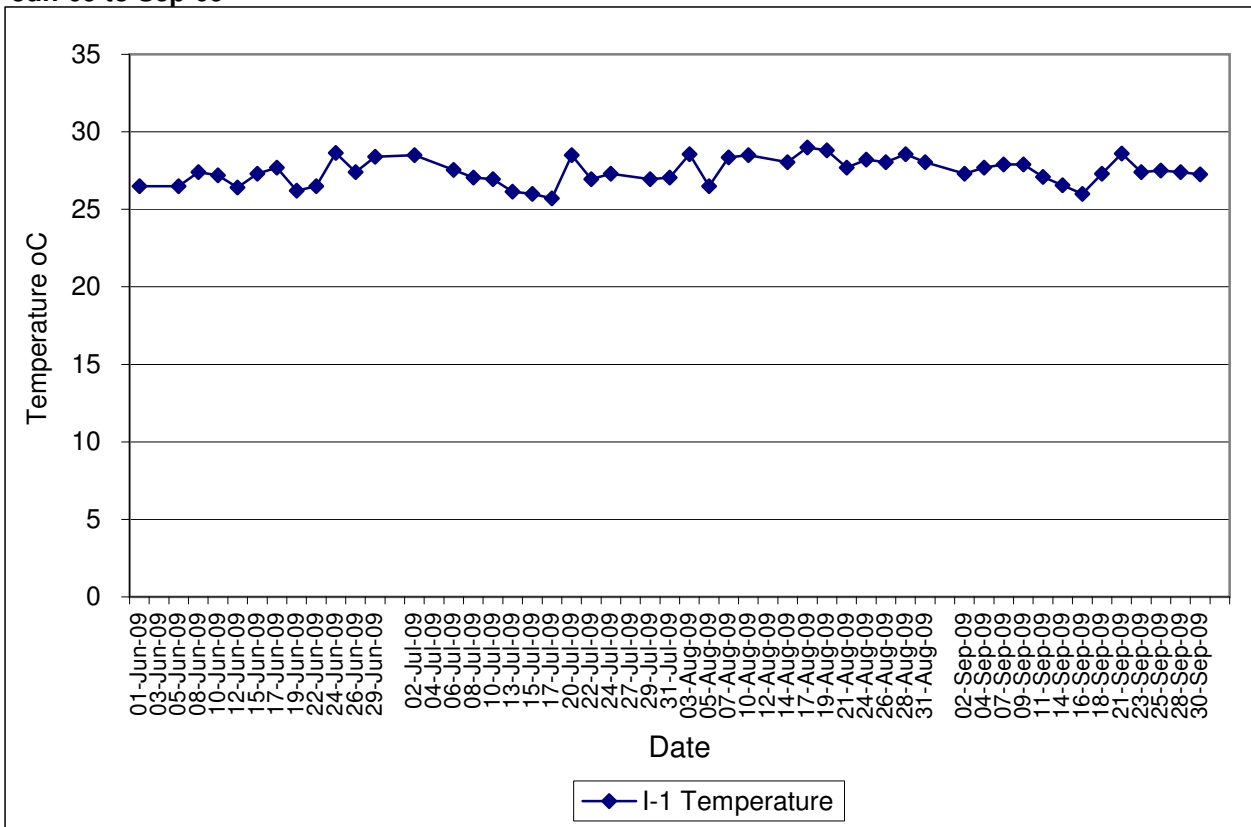


Contract No. DC/2007/12 - Design and Construction of Tsuen Wan Drainage Tunnel

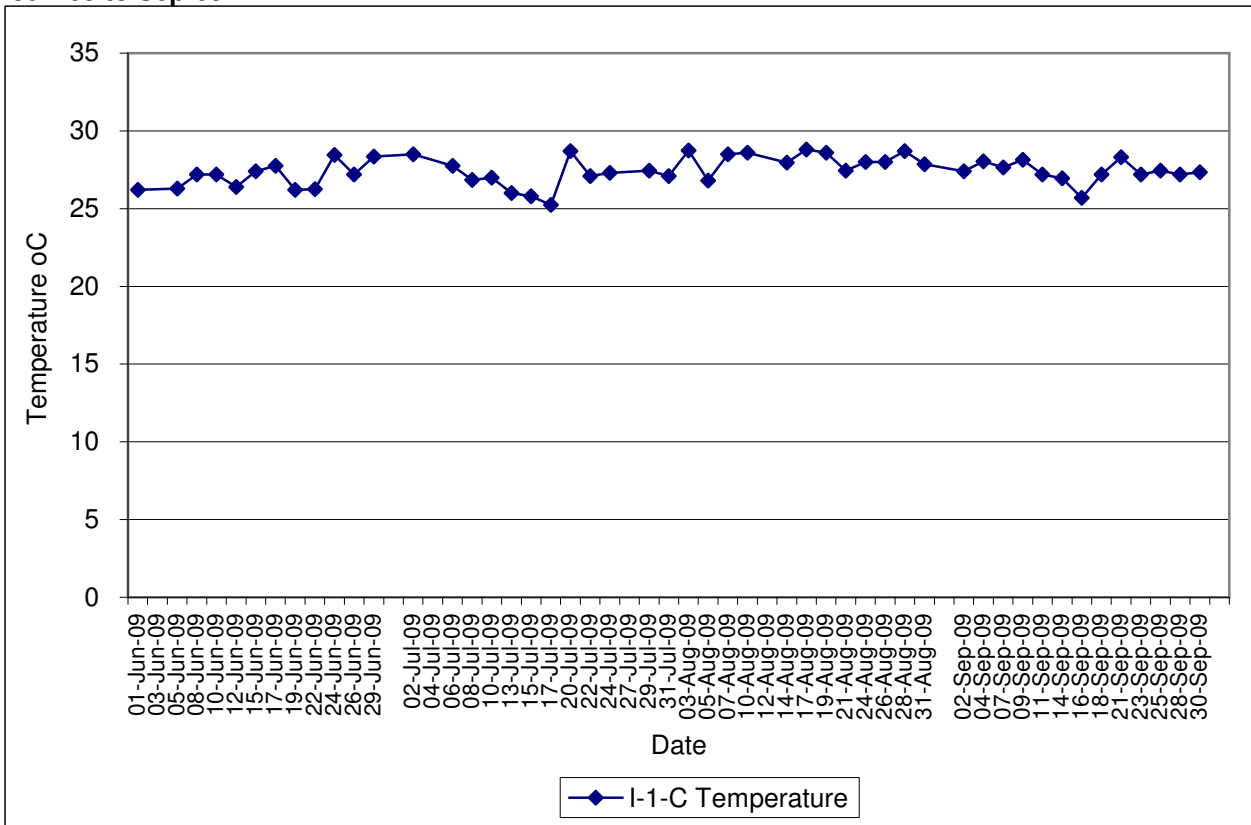
Water Quality Impact Monitoring Results

Monitoring Locations	Date	Start Time	Weather	Water Depth(m)	Temp			DO(mg/L)			Action/Limit Level of DO(mg/L)	pH			Turbidity(NTU)			Action/Limit Level of Tby	SS (mg/L)			Action/Limit Level of SS(mg/L)	Remarks:	Action to be taken
					1	2	Avg	1	2	Avg		1	2	Avg	1	2	Avg		1	2	Avg			
Sik Sik Yuen Ho Fung College I-1	02-Sep-09	09:38	Sunny	<1	27.30	27.30	27.30	5.59	5.63	5.61	6.74	6.73	6.74	2.21	2.27	2.24	2.0	2.0	2.0	Nil				
	04-Sep-09	10:10	Sunny	<1	27.70	27.70	27.70	5.32	5.38	5.35	6.81	6.80	6.81	2.60	2.52	2.56	2.0	2.0	2.0	Nil				
	07-Sep-09	09:47	Sunny	<1	27.90	27.90	27.90	5.89	5.94	5.92	5.82	5.83	5.83	2.86	2.97	2.92	2.3	2.1	2.2	Nil				
	09-Sep-09	09:35	Sunny	<1	27.90	27.90	27.90	5.33	5.37	5.35	7.30	7.30	7.30	5.38	5.25	5.32	2.4	3.0	2.7	Nil				
	11-Sep-09	09:40	Cloudy	<1	27.10	27.10	27.10	5.23	5.28	5.26	7.00	6.99	7.00	3.92	3.85	3.89	5.2	4.5	4.9	Nil	The exceedance was considered not to be project-related.			
	14-Sep-09	10:00	Cloudy	<1	26.50	26.60	26.55	5.02	5.09	5.06	7.07	7.05	7.06	3.90	3.85	3.88	8.8	7.8	8.3	Nil				
	16-Sep-09	11:27	Cloudy	<1	26.00	26.00	26.00	4.45	4.49	4.47	7.25	7.26	7.26	6.59	6.63	6.61	3.1	3.4	3.3	Nil	Breaking by backhoe,excavation work			
	18-Sep-09	10:07	Sunny	<1	27.30	27.30	27.30	3.38	3.48	3.43	7.52	7.52	7.52	2.43	2.55	2.49	2.0	2.0	2.0	Nil	The exceedance was considered not to be project-related.			
	21-Sep-09	10:10	Sunny	<1	28.60	28.60	28.60	3.58	3.55	3.57	7.65	7.66	7.66	2.05	2.13	2.09	2.0	2.0	2.0	Nil				
	23-Sep-09	10:00	Sunny	<1	27.40	27.40	27.40	3.81	3.88	3.85	7.65	7.65	7.65	5.37	5.46	5.42	4.0	4.8	4.4	Nil				
	25-Sep-09	09:25	Cloudy	<1	27.50	27.50	27.50	5.30	5.35	5.33	7.70	7.71	7.71	4.20	4.15	4.18	4.6	4.0	4.3	Nil				
	28-Sep-09	09:30	Cloudy	<1	27.40	27.40	27.40	5.42	5.53	5.48	7.22	7.22	7.22	4.20	4.17	4.19	2.0	2.0	2.0	Nil	Breaking by backhoe,excavation work			
	30-Sep-09	09:10	Sunny	<1	27.20	27.30	27.25	7.32	7.31	7.32	7.52	7.52	7.52	2.43	2.45	2.44	2.0	2.0	2.0	Nil				
	-	-	-	-	-	-	-	-	-	-	-	-	-	-	-	-	-	-	-	-	-	-		
	Sik Sik Yuen Ho Fung College I-1-C	02-Sep-09	09:25	Sunny	<1	27.40	27.40	27.40	5.32	5.25	5.29	6.78	6.78	6.78	2.46	2.51	2.49	2.0	2.0	2.0	Nil			
04-Sep-09		10:00	Sunny	<1	28.00	28.10	28.05	4.09	4.20	4.15	6.85	6.85	6.85	2.75	2.86	2.81	2.0	2.0	2.0	Nil				
07-Sep-09		09:36	Sunny	<1	27.60	27.70	27.65	5.75	5.80	5.78	5.84	5.84	5.84	3.75	3.70	3.73	2.0	2.0	2.0	Nil				
09-Sep-09		09:25	Sunny	<1	28.10	28.20	28.15	5.60	5.65	5.63	7.40	7.41	7.41	5.60	5.47	5.54	2.9	2.5	2.7	Nil				
11-Sep-09		09:27	Cloudy	<1	27.20	27.20	27.20	5.04	5.09	5.07	6.86	6.85	6.86	4.10	4.02	4.06	2.0	2.4	2.2	Nil				
14-Sep-09		09:50	Cloudy	<1	27.00	26.90	26.95	5.12	5.07	5.10	7.10	7.11	7.11	4.07	3.95	4.01	9.1	8.3	8.7	Nil				
16-Sep-09		11:15	Cloudy	<1	25.70	25.70	25.70	4.57	4.53	4.55	7.30	7.30	7.30	7.07	7.12	7.10	3.0	2.4	2.7	Nil				
18-Sep-09		09:55	Sunny	<1	27.20	27.20	27.20	3.11	3.18	3.15	7.50	7.50	7.50	2.65	2.68	2.67	2.0	2.0	2.0	Nil				
21-Sep-09		09:55	Sunny	<1	28.30	28.30	28.30	3.48	3.44	3.46	7.69	7.70	7.70	2.18	2.23	2.21	2.0	2.0	2.0	Nil				
23-Sep-09		09:50	Sunny	<1	27.20	27.20	27.20	4.01	4.06	4.04	7.67	7.67	7.67	5.93	5.90	5.92	4.1	5.0	4.6	Nil				
25-Sep-09		09:10	Cloudy	<1	27.40	27.50	27.45	5.36	5.43	5.40	7.76	7.75	7.76	4.39	4.31	4.35	3.3	4.0	3.7	Nil				
28-Sep-09		09:15	Cloudy	<1	27.20	27.20	27.20	5.58	5.53	5.56	7.22	7.22	7.22	4.44	4.25	4.35	2.0	2.0	2.0	Nil				
30-Sep-09		09:25	Sunny	<1	27.30	27.40	27.35	7.65	7.52	7.59	7.43	7.44	7.44	2.57	2.63	2.60	2.0	2.0	2.0	Nil				
-		-	-	-	-	-	-	-	-	-	-	-	-	-	-	-	-	-	-	-	-	-		
Hong Hoi Chee Hong Temple I-2		02-Sep-09	09:00	Sunny	<1	27.60	27.60	27.60	4.72	4.80	4.76	6.82	6.81	6.82	1.02	1.07	1.05	2.0	2.0	2.0	Nil			
	04-Sep-09	09:45	Sunny	<1	27.90	28.00	27.95	4.48	4.42	4.45	6.90	6.90	6.90	1.00	1.05	1.03	2.0	2.0	2.0	Nil				
	07-Sep-09	09:15	Sunny	<1	27.80	27.80	27.80	5.09	5.21	5.15	5.97	5.98	5.98	2.43	2.38	2.41	2.0	2.0	2.0	Nil				
	09-Sep-09	09:00	Sunny	<1	28.20	28.20	28.20	5.06	5.01	5.04	7.20	7.20	7.20	3.15	3.06	3.11	2.4	2.1	2.3	Nil				
	11-Sep-09	09:05	Cloudy	<1	26.80	26.80	26.80	5.48	5.44	5.46	7.15	7.16	7.16	1.50	1.42	1.46	2.0	2.0	2.0	Nil				
	14-Sep-09	09:30	Cloudy	<1	26.60	26.50	26.55	4.63	4.71	4.67	7.18	7.19	7.19	2.05	2.11	2.08	3.2	3.0	3.1	Nil				
	16-Sep-09	10:48	Cloudy	<1	25.20	25.30	25.25	4.34	4.30	4.32	7.69	7.69	7.69	3.25	3.37	3.31	2.8	2.3	2.6	Nil	Drilling work			
	18-Sep-09	09:28	Sunny	<1	27.70	27.70	27.70	3.96	4.08	4.02	7.45	7.44	7.45	2.40	2.50	2.45	2.0	2.0	2.0	Nil				
	21-Sep-09	09:30	Sunny	<1	28.80	28.80	28.80	3.66	3.75	3.71	7.56	7.56	7.56	1.33	1.30	1.32	2.0	2.0	2.0	Nil				
	23-Sep-09	09:20	Sunny	<1	27.20	27.20	27.20	3.97	4.05	4.01	7.64	7.64	7.64	1.38	1.44	1.41	2.0	2.0	2.0	Nil				
	25-Sep-09	10:05	Cloudy	<1	27.70	27.70	27.70	5.35	5.41	5.38	7.60	7.62	7.61	1.09	1.05	1.07	2.2	2.2	2.2	Nil				
	28-Sep-09	10:20	Cloudy	<1	27.40	27.40	27.40	5.35	5.22	5.29	7.61	7.61	7.61	3.45	3.47	3.46	2.0	2.0	2.0	Nil	Breaking by backhoe			
	30-Sep-09	09:49	Sunny	<1	27.20	27.50	27.35	7.35	7.44	7.40	7.52	7.52	7.52	2.36	2.41	2.39	2.0	2.0	2.0	Nil				
	-	-	-	-	-	-	-	-	-	-	-	-	-	-	-	-	-	-	-	-	-	-		
	Hong Hoi Chee Hong Temple I-2-C	02-Sep-09	08:50	Sunny	<1	27.80	27.80	27.80	4.61	4.58	4.60	6.81	6.80	6.81	1.12	1.17	1.15	2.0	2.0	2.0	Nil			
04-Sep-09		09:35	Sunny	<1	27.70	27.70	27.70	4.57	4.63	4.60	6.92	6.92	6.92	1.10	1.07	1.09	2.0	2.0	2.0	Nil				
07-Sep-09		09:05	Sunny	<1	28.00	28.00	28.00	5.42	5.47	5.45	6.00	6.00	6.00	2.60	2.53	2.57	2.0	2.0	2.0	Nil				
09-Sep-09		08:50	Sunny	<1	28.10	28.00	28.05	4.97	5.03	5.00	7.25	7.26	7.26	3.23	3.31	3.27	2.8	2.4	2.6	Nil				
11-Sep-09		08:55	Cloudy	<1	27.00	26.90	26.95	5.20	5.28	5.24	7.11	7.12	7.12	1.58	1.63	1.61	2.0	2.0	2.0	Nil				
14-Sep-09		09:18	Cloudy	<1	26.70	26.70	26.70	4.93	4.89	4.91	7.15	7.16	7.16	2.15	2.22	2.19	2.7	3.5	3.1	Nil				
16-Sep-09		10:38	Cloudy	<1	25.50	25.50	25.50	4.40	4.37	4.39	7.65	7.65	7.65	3.50	3.47	3.49	2.2	2.6	2.4	Nil				
18-Sep-09		09:18	Sunny	<1	27.00	27.00	27.00	3.13	3.18	3.16	7.40	7.41	7.41	2.50	2.58	2.54	2.0	2.0	2.0	Nil				
21-Sep-09		09:20	Sunny	<1	28.90	28.90	28.90	3.56	3.59	3.58	7.60	7.60	7.60	1.37	1.44	1.41	2.0	2.0	2.0	Nil				
23-Sep-09		09:10	Sunny	<1	27.00	27.00	27.00	4.16	4.10	4.13	7.65	7.65	7.65	1.57	1.62	1.60	2.0	2.0	2.0	Nil				
25-Sep-09		09:55	Cloudy	<1	27.40	27.40	27.40	5.31	5.26	5.29	7.60	7.61	7.61	1.11	1.17	1.14	2.0	2.0	2.0	Nil				
28-Sep-09		09:55	Cloudy	<1	27.40	27.40	27.40	5.45	5.55	5.50	7.66	7.66	7.66	4.22	4.38	4.30	2.0	2.0	2.0	Nil				
30-Sep-09		09:35	Sunny	<1	27.10	27.10	27.10	7.48	7.62	7.55	7.52	7.52	7.52	2.51	2.58	2.55	2.0	2.0	2.0	Nil				
-		-	-	-	-	-	-	-	-	-	-	-	-	-	-	-	-	-	-	-	-	-		
Squatters I-3		02-Sep-09	10:20	Sunny	<1	27.90	27.90	27.90	4.96	5.03	5.00	6.98	6.97	6.98	1.11	1.22	1.17	2.0	2.0	2.0	Nil			
	04-Sep-09	11:33	Sunny	<1	28.00	28.10	28.05	4.58	4.64	4.61	7.40	7.40	7.40	1.30	1.35	1.33</								

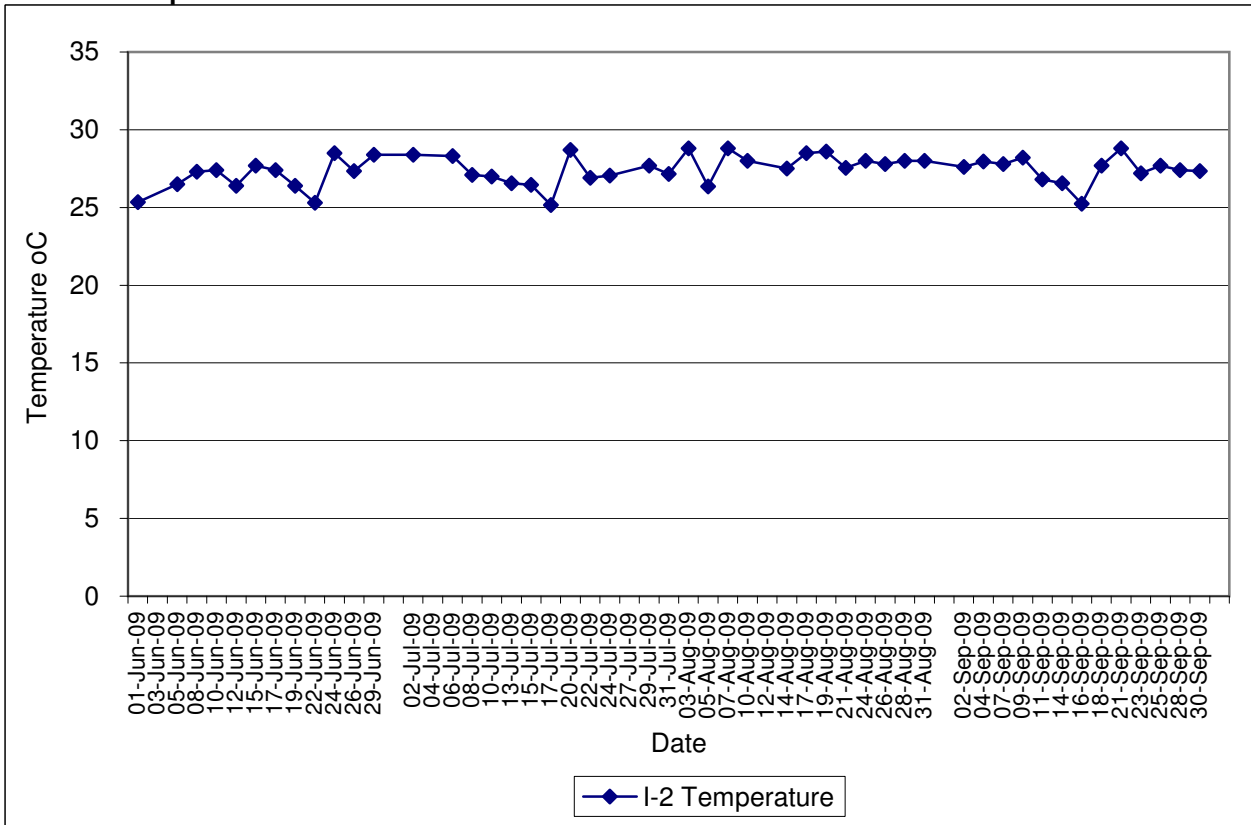
Contract No. DC/2007/12 - Design and Construction of Tsuen Wan Drainage Tunnel
Water Quality Results at Sik Sik Yuen Ho Fung College (I-1)
Jun-09 to Sep-09



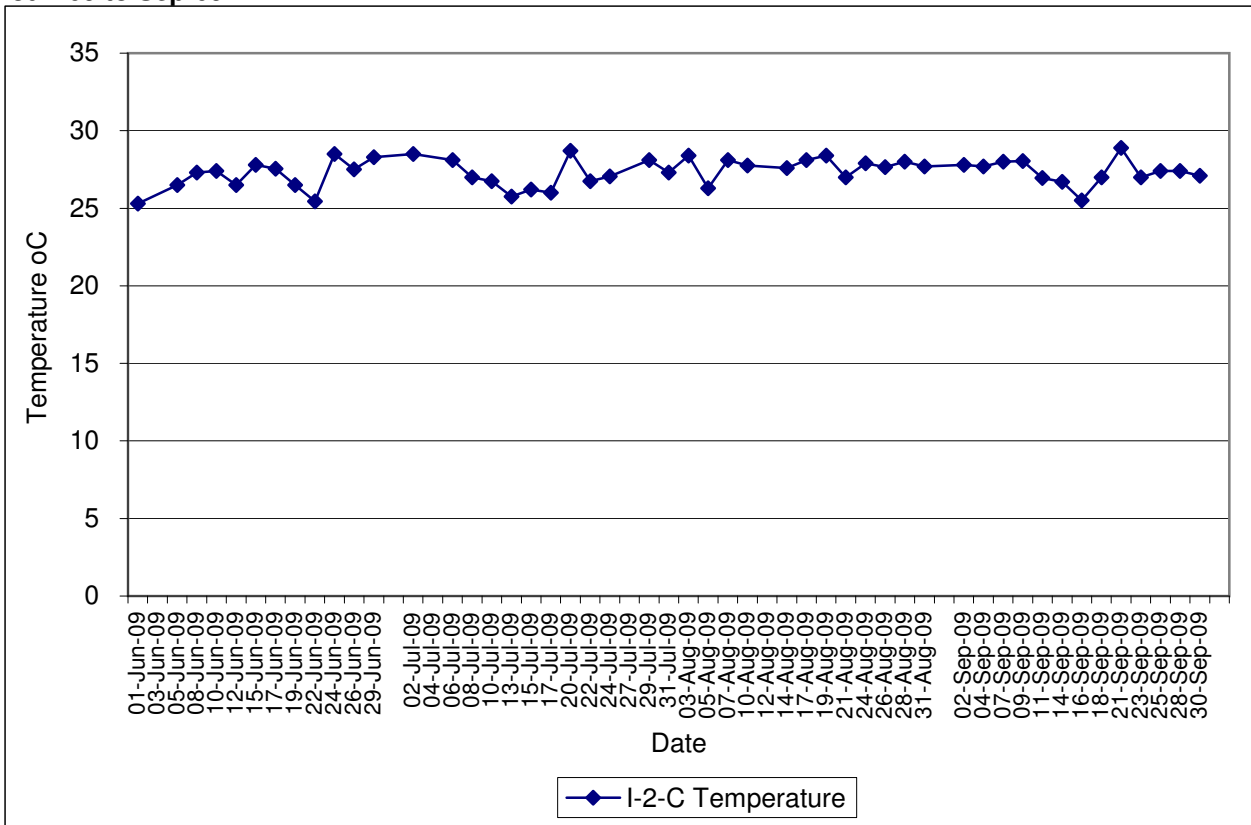
Contract No. DC/2007/12 - Design and Construction of Tsuen Wan Drainage Tunnel
Water Quality Results at Sik Sik Yuen Ho Fung College (I-1-C)
Jun-09 to Sep-09



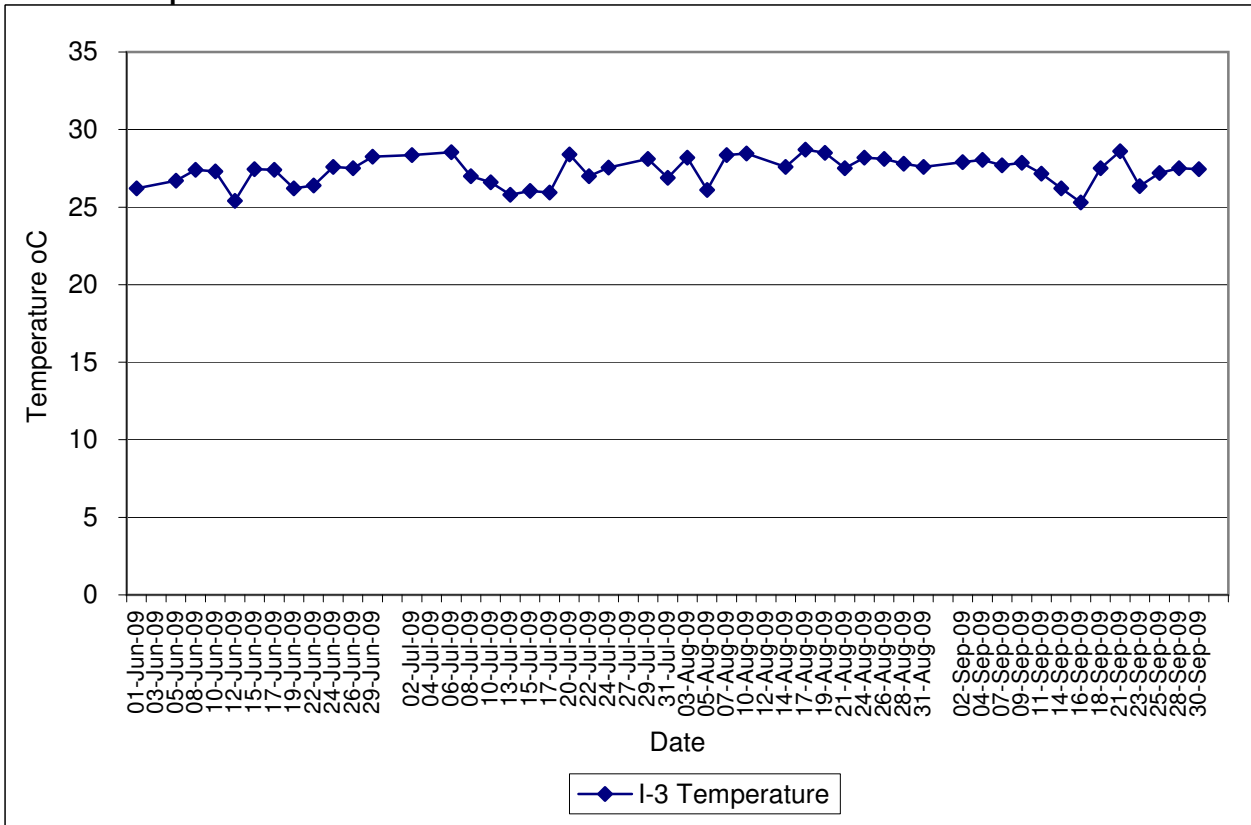
Contract No. DC/2007/12 - Design and Construction of Tsuen Wan Drainage Tunnel
Water Quality Results at Hong Hoi Chee Hong Temple (I-2)
Jun-09 to Sep-09



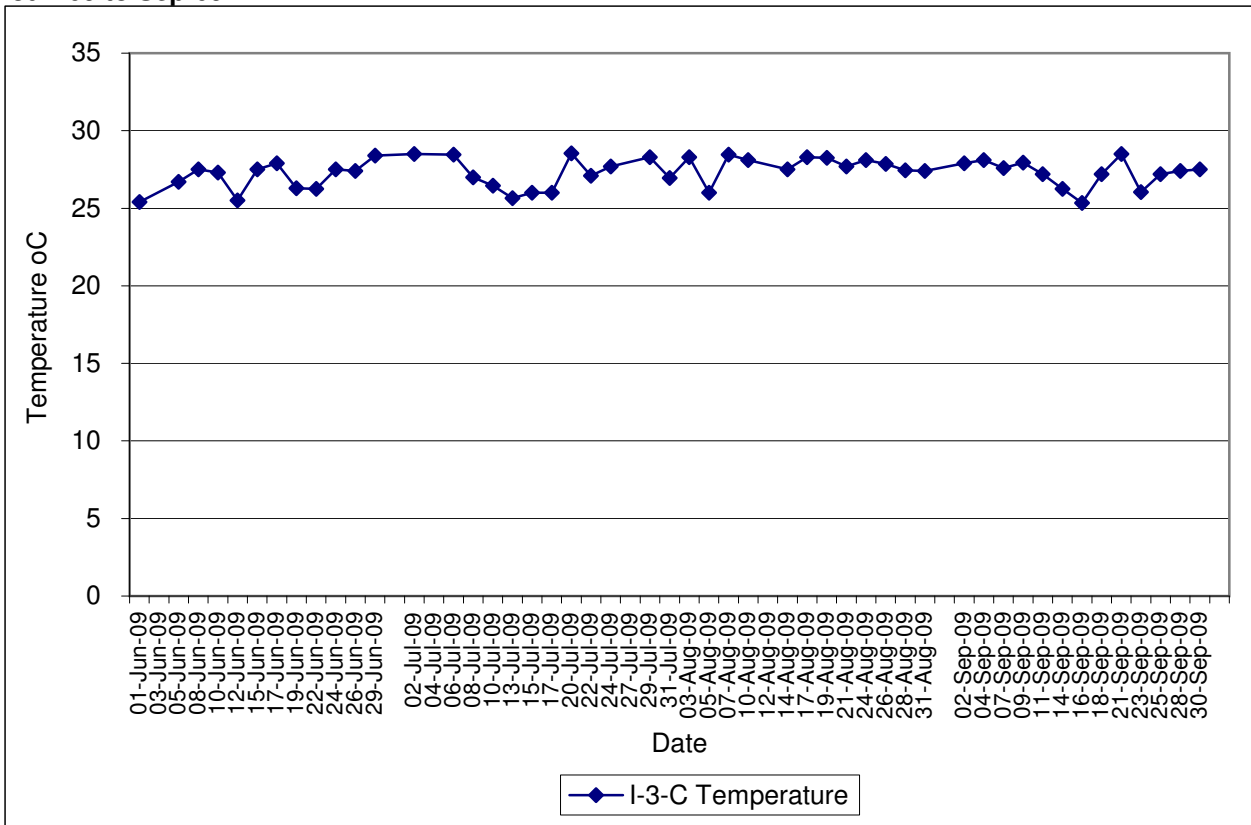
Contract No. DC/2007/12 - Design and Construction of Tsuen Wan Drainage Tunnel
Water Quality Results at Hong Hoi Chee Hong Temple (I-2-C)
Jun-09 to Sep-09



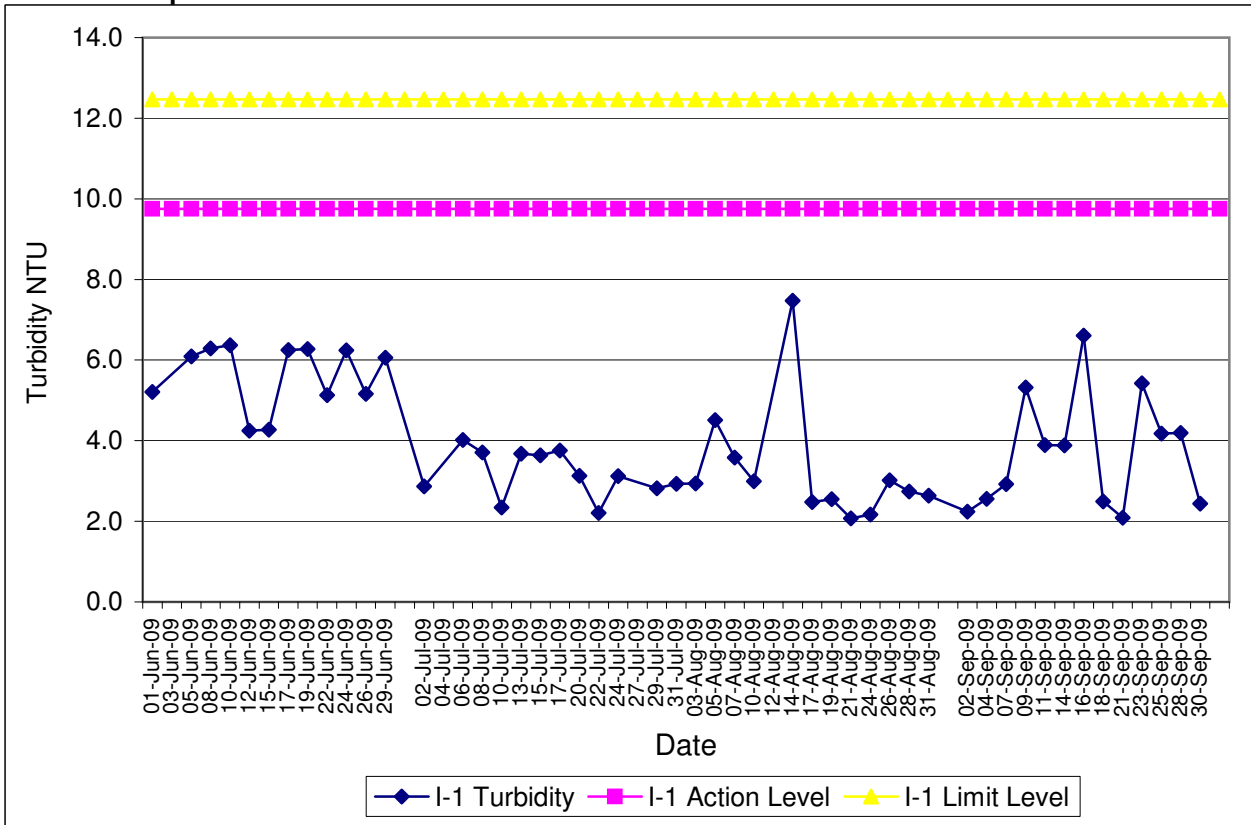
Contract No. DC/2007/12 - Design and Construction of Tsuen Wan Drainage Tunnel
Water Quality Results at Squatters (I-3)
Jun-09 to Sep-09



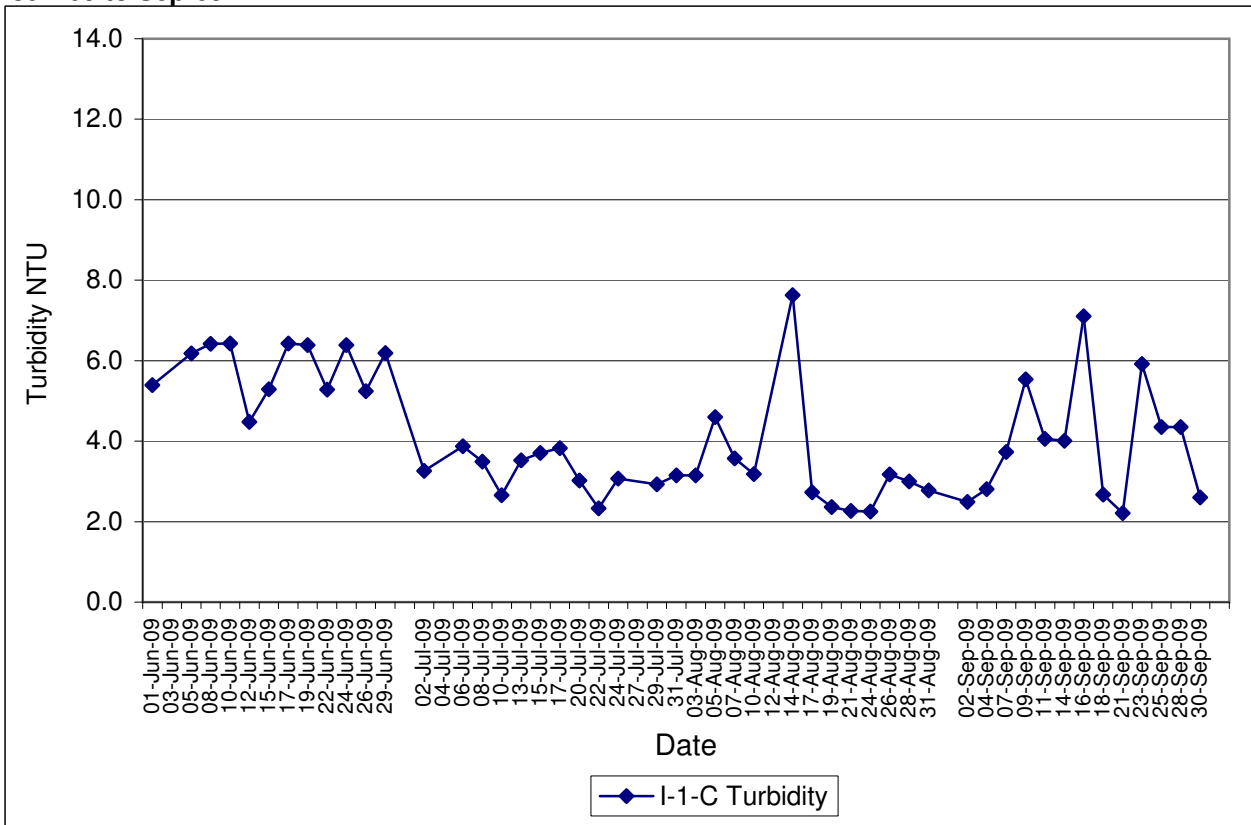
Contract No. DC/2007/12 - Design and Construction of Tsuen Wan Drainage Tunnel
Water Quality Results at Squatters (I-3-C)
Jun-09 to Sep-09



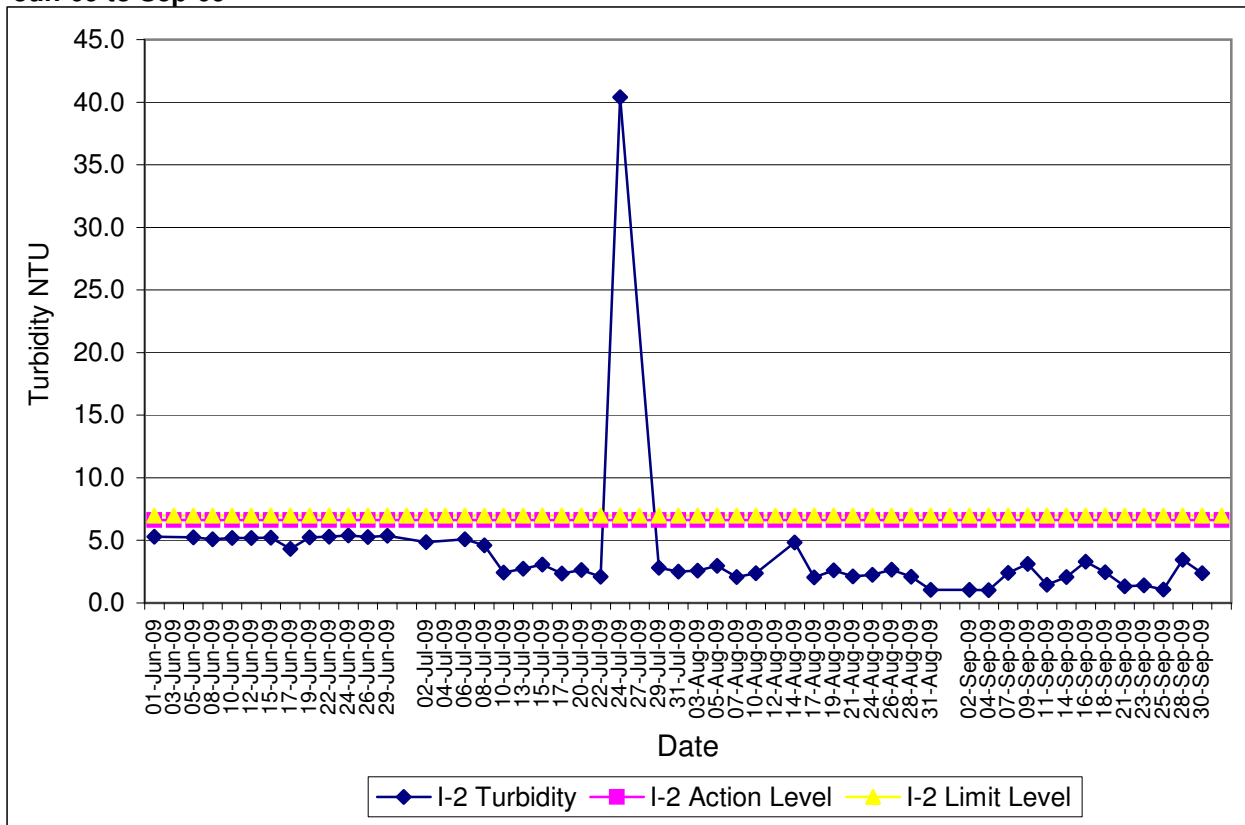
**Contract No. DC/2007/12 - Design and Construction of Tsuen Wan Drainage Tunnel
 Water Quality Results at Sik Sik Yuen Ho Fung College (I-1)
 Jun-09 to Sep-09**



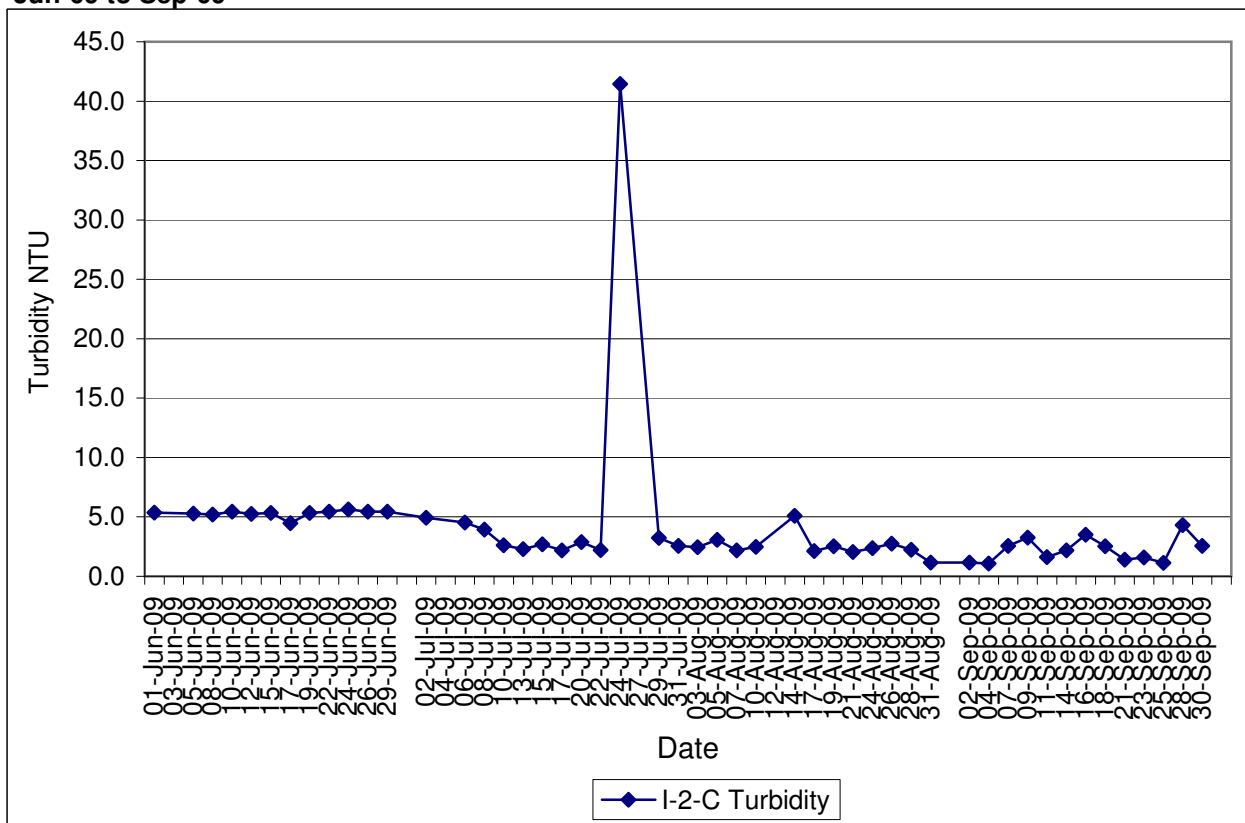
**Contract No. DC/2007/12 - Design and Construction of Tsuen Wan Drainage Tunnel
 Water Quality Results at Sik Sik Yuen Ho Fung College (I-1-C)
 Jun-09 to Sep-09**



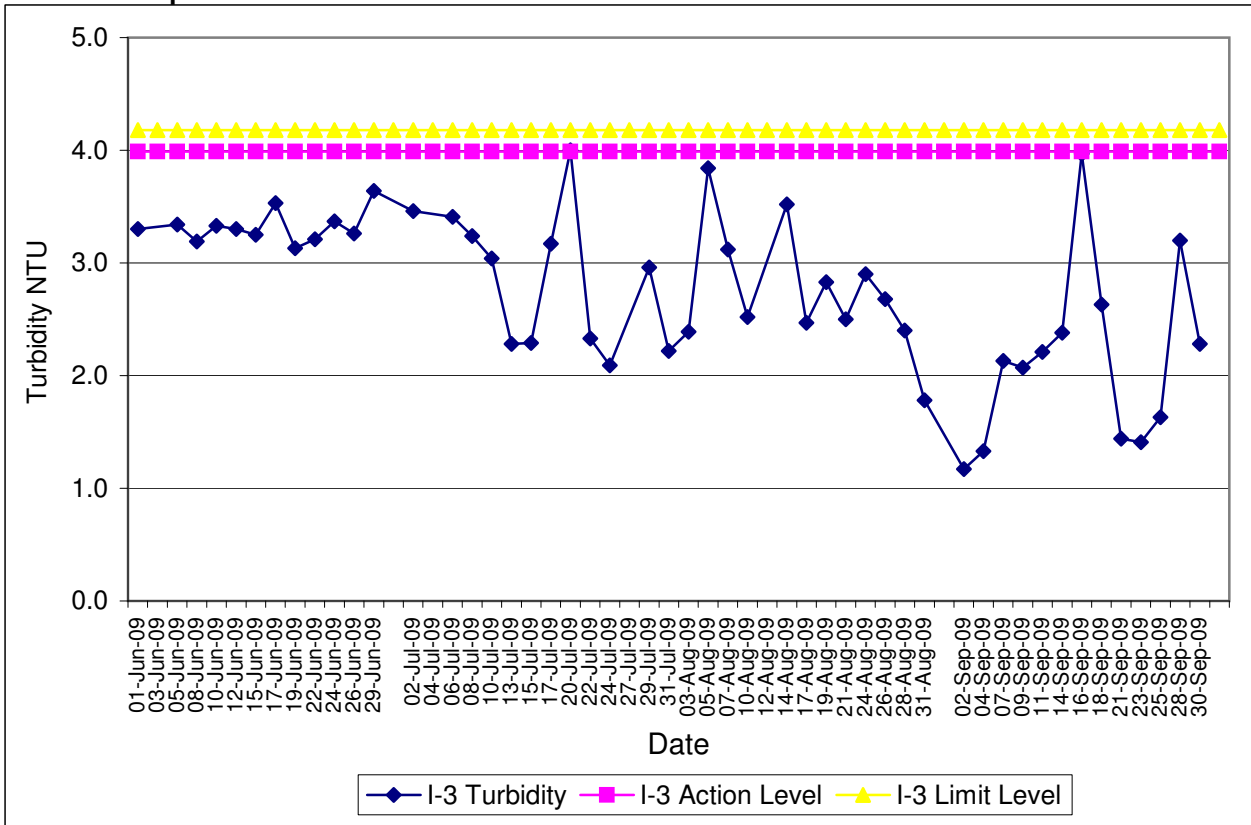
Contract No. DC/2007/12 - Design and Construction of Tsuen Wan Drainage Tunnel
Water Quality Results at Hong Hoi Chee Hong Temple (I-2)
Jun-09 to Sep-09



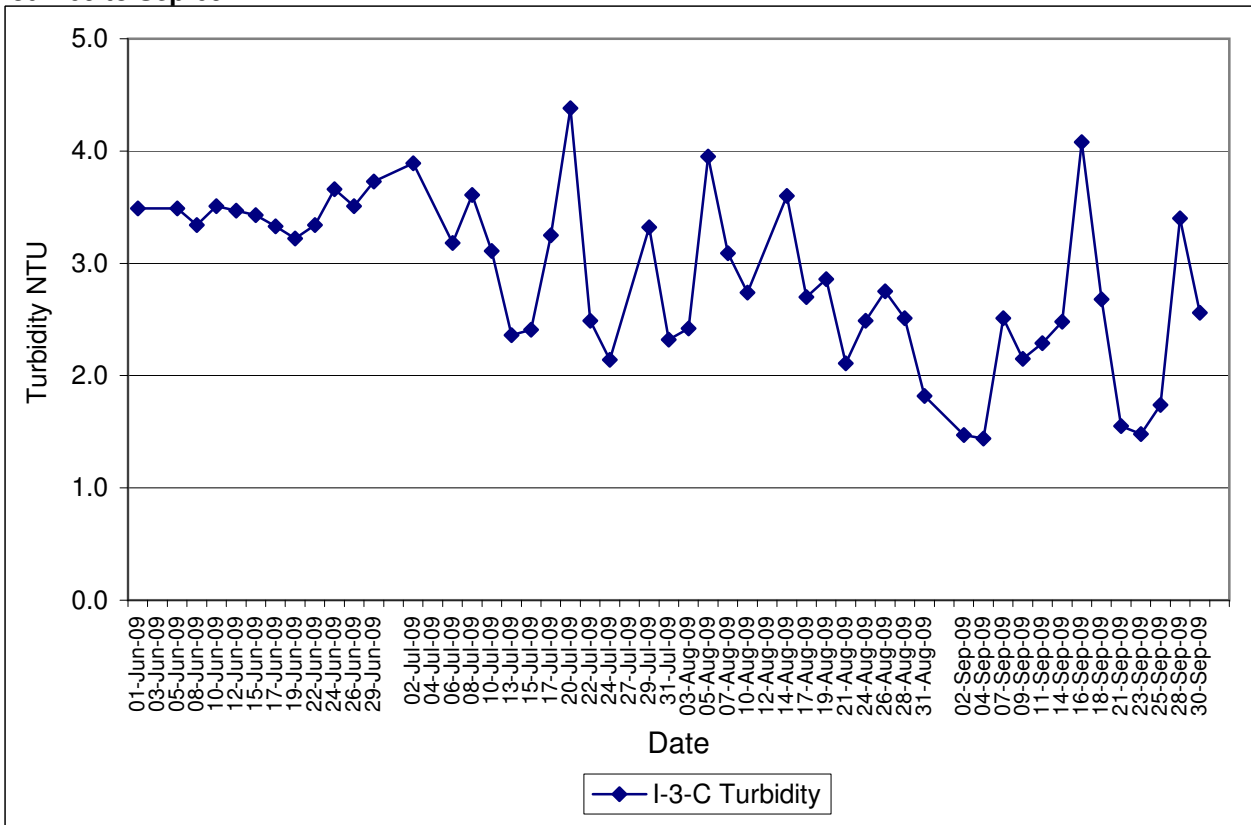
Contract No. DC/2007/12 - Design and Construction of Tsuen Wan Drainage Tunnel
Water Quality Results at Hong Hoi Chee Hong Temple (I-2-C)
Jun-09 to Sep-09



Contract No. DC/2007/12 - Design and Construction of Tsuen Wan Drainage Tunnel
Water Quality Results at Squatters (I-3)
Jun-09 to Sep-09

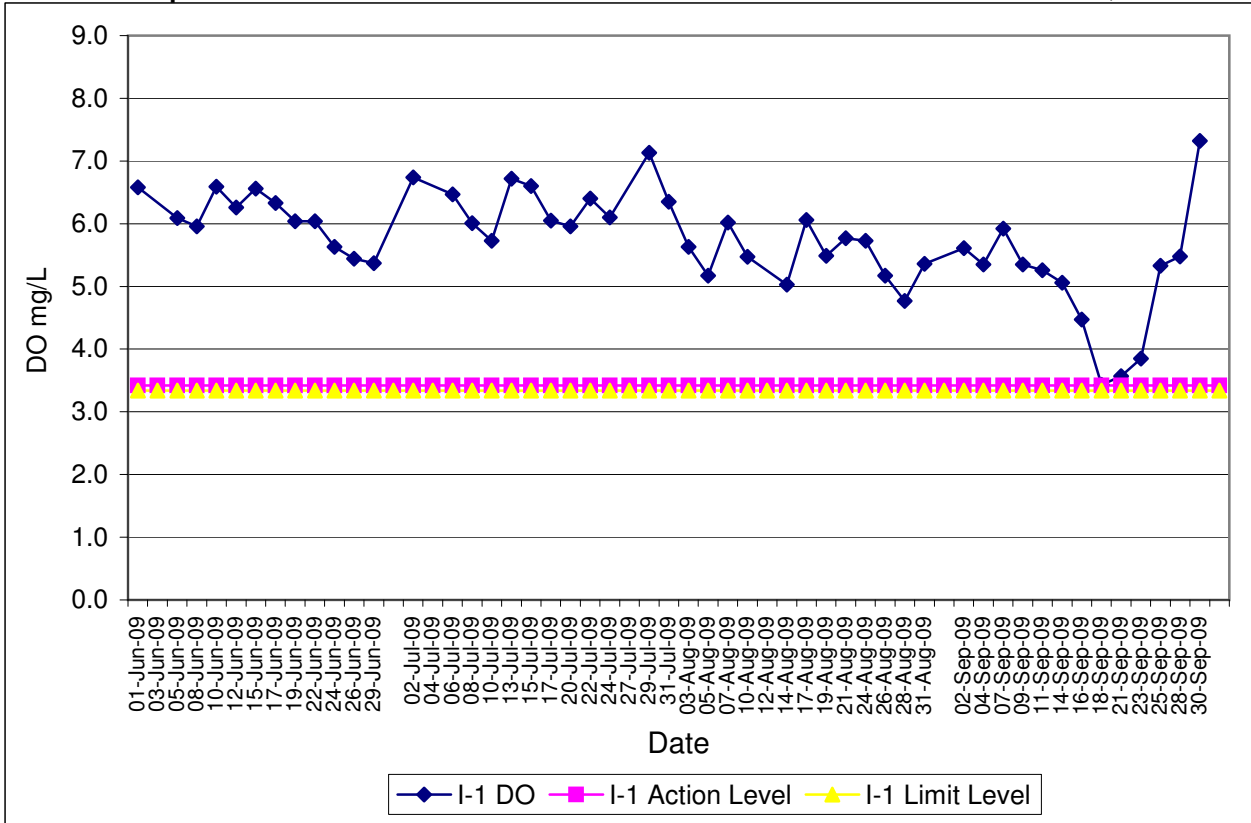


Contract No. DC/2007/12 - Design and Construction of Tsuen Wan Drainage Tunnel
Water Quality Results at Squatters (I-3-C)
Jun-09 to Sep-09

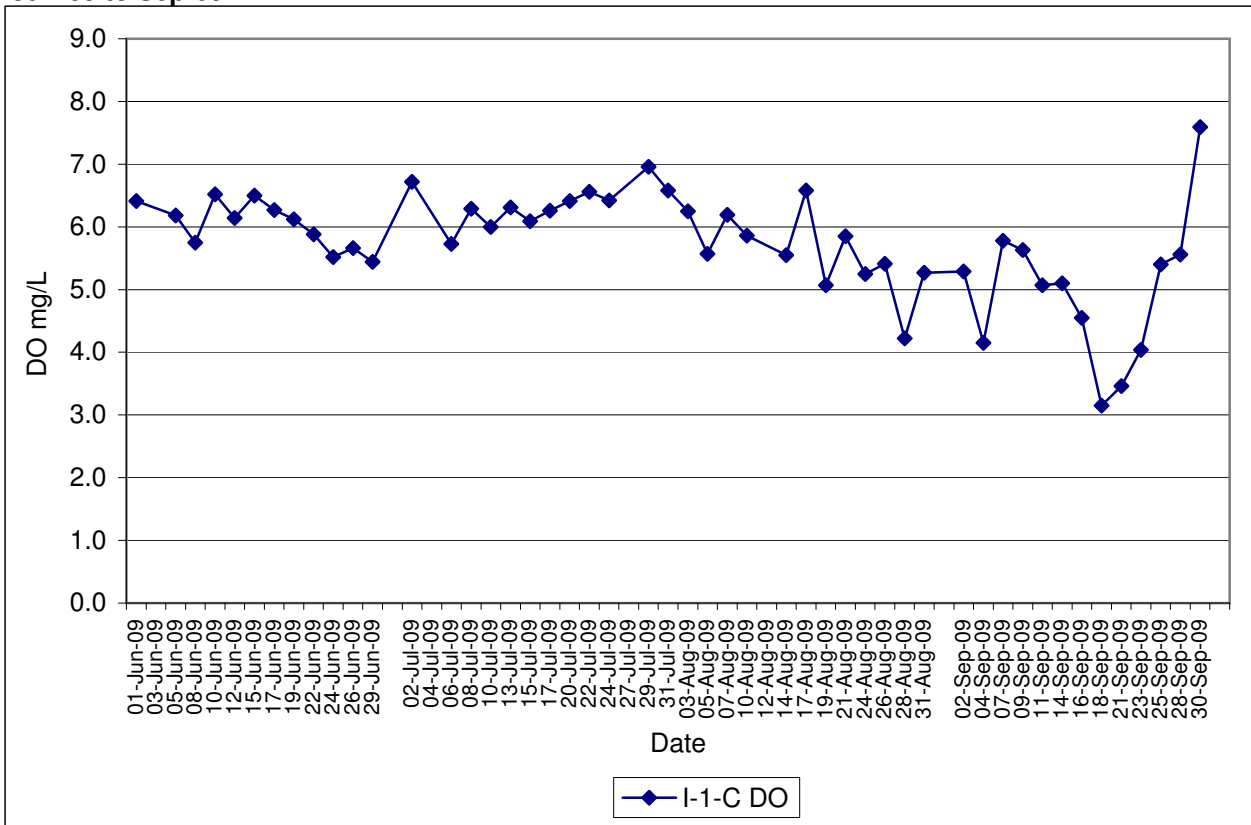


Contract No. DC/2007/12 - Design and Construction of Tsuen Wan Drainage Tunnel
Water Quality Results at Sik Sik Yuen Ho Fung College (I-1)
Jun-09 to Sep-09

Note: Exceedances of Action / Limit Levels occur when the levels of DO are below the respective limit levels.

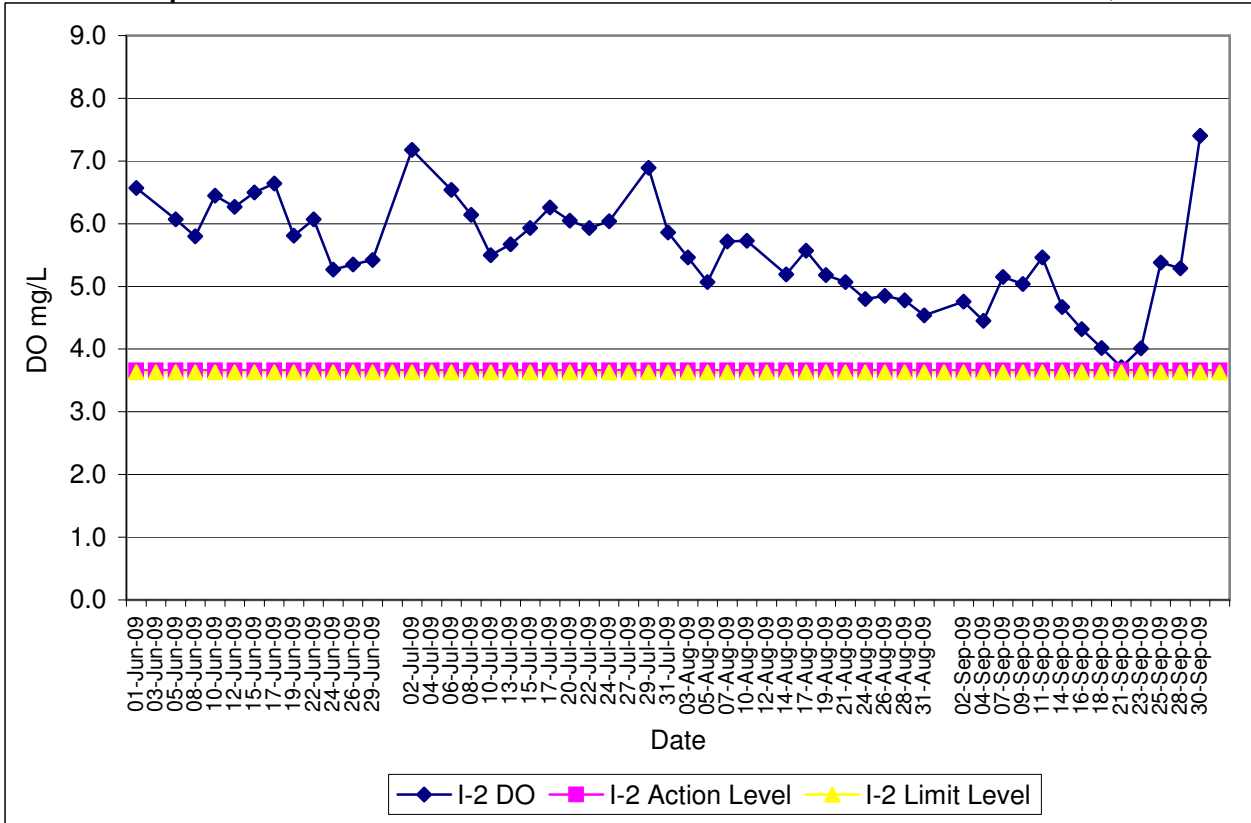


Contract No. DC/2007/12 - Design and Construction of Tsuen Wan Drainage Tunnel
Water Quality Results at Sik Sik Yuen Ho Fung College (I-1-C)
Jun-09 to Sep-09

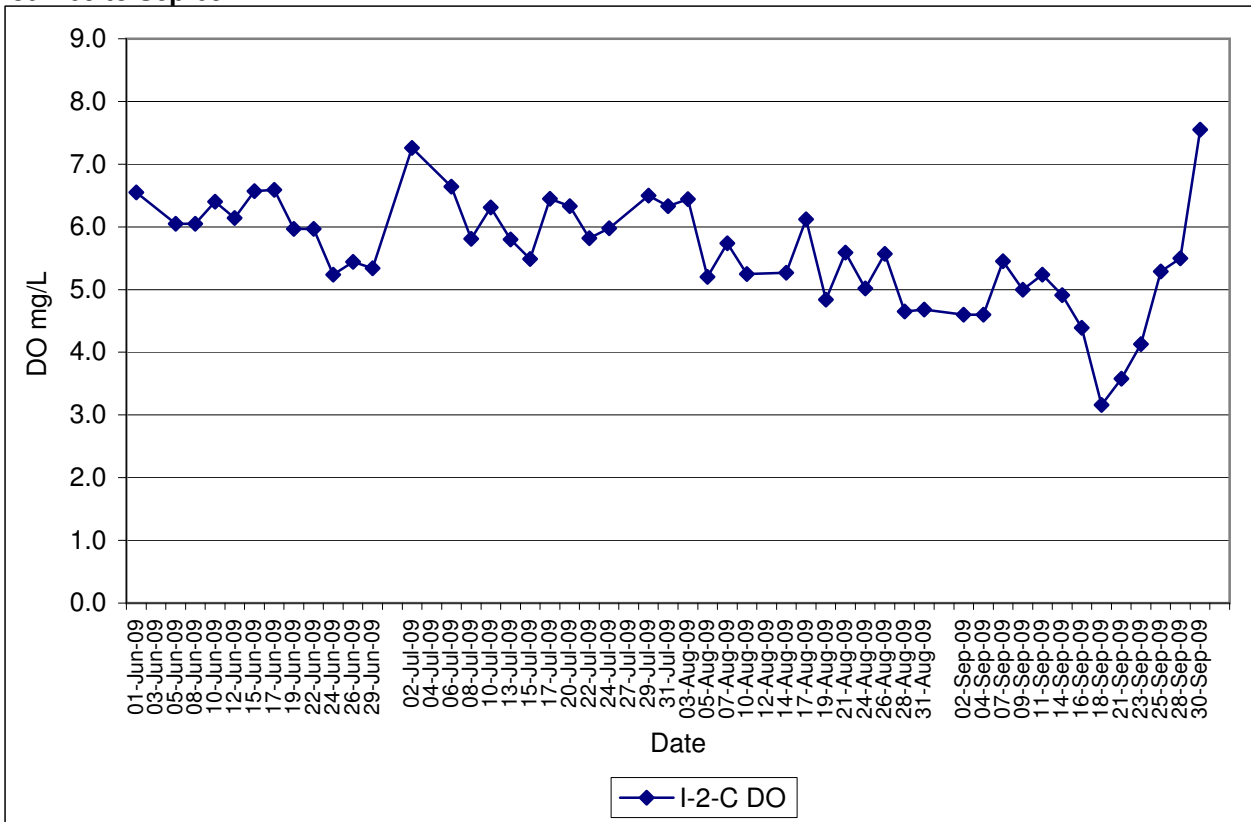


Contract No. DC/2007/12 - Design and Construction of Tsuen Wan Drainage Tunnel
Water Quality Results at Hong Hoi Chee Hong Temple (I-2)
Jun-09 to Sep-09

Note: Exceedances of Action / Limit Levels occur when the levels of DO are below the respective limit levels.

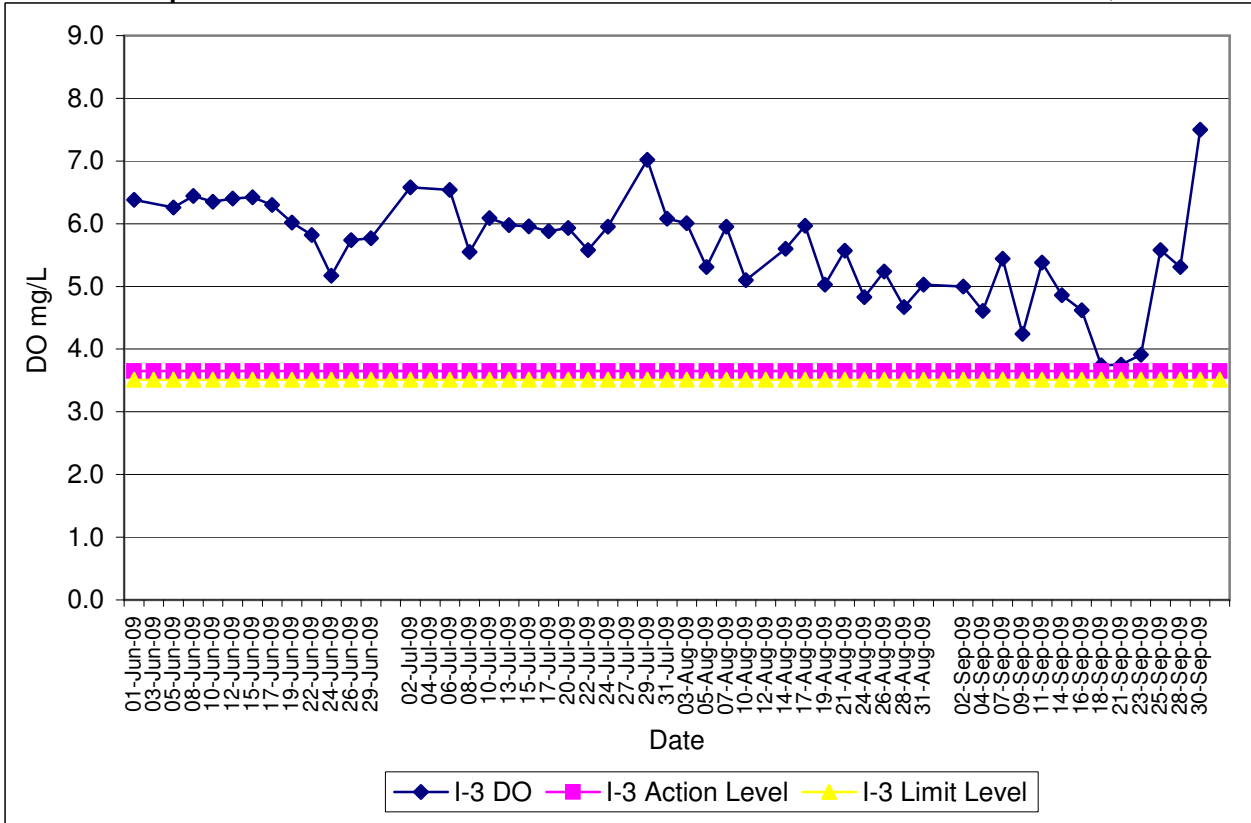


Contract No. DC/2007/12 - Design and Construction of Tsuen Wan Drainage Tunnel
Water Quality Results at Hong Hoi Chee Hong Temple (I-2-C)
Jun-09 to Sep-09

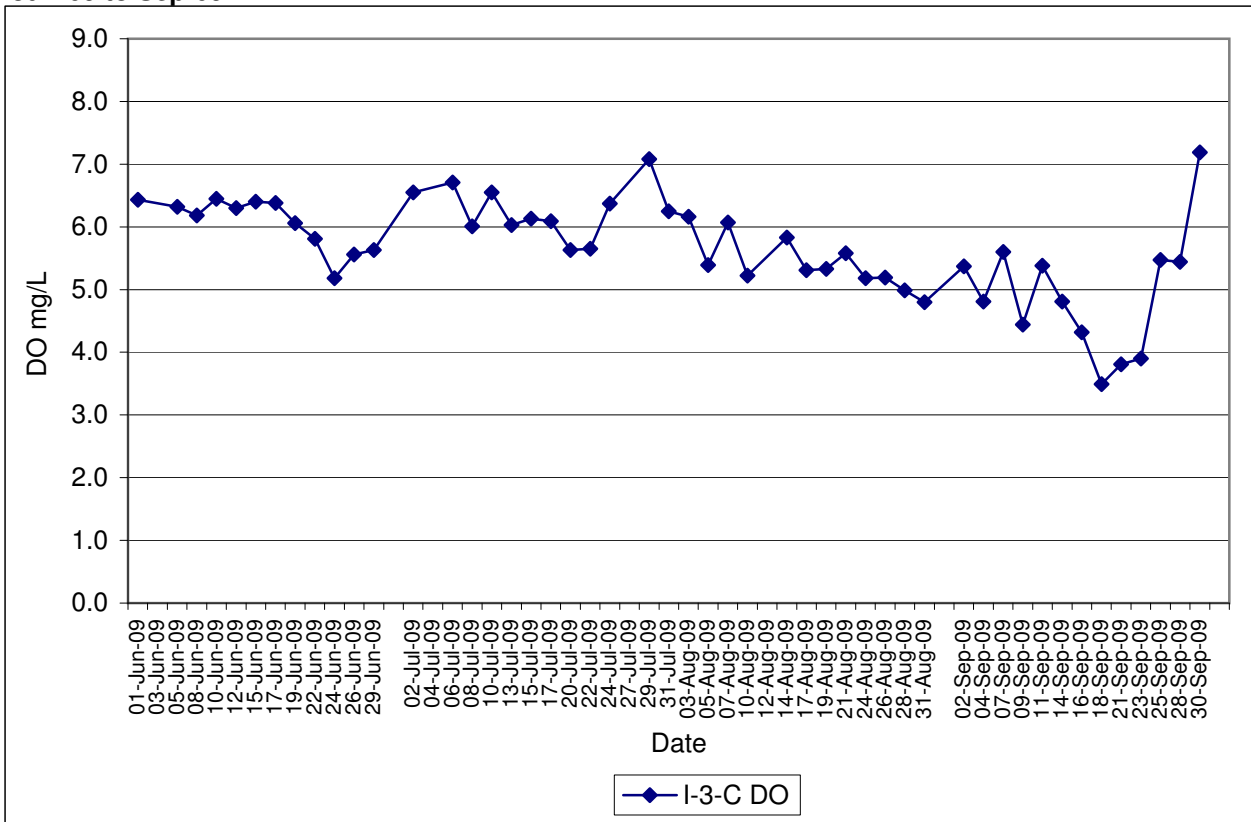


Contract No. DC/2007/12 - Design and Construction of Tsuen Wan Drainage Tunnel
Water Quality Results at Squatters (I-3)
Jun-09 to Sep-09

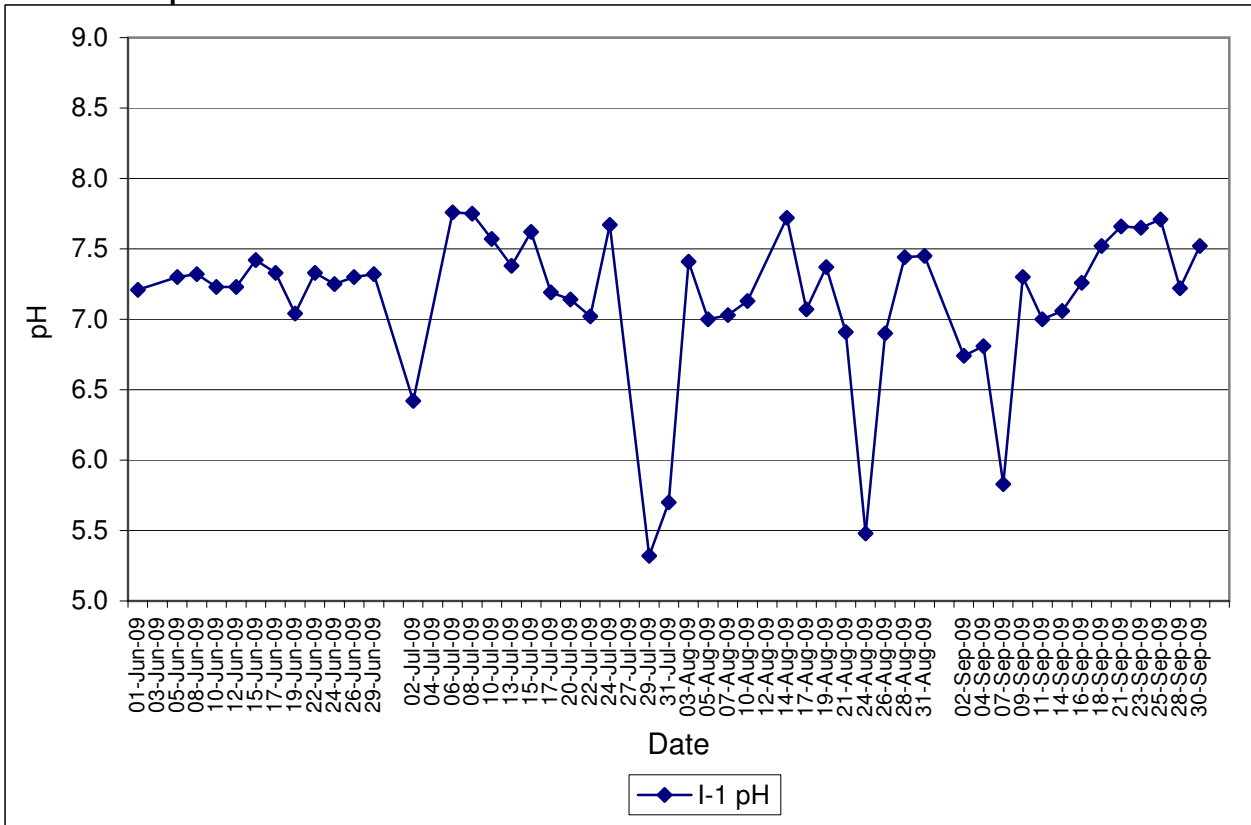
Note: Exceedances of Action / Limit Levels occur when the levels of DO are below the respective limit levels.



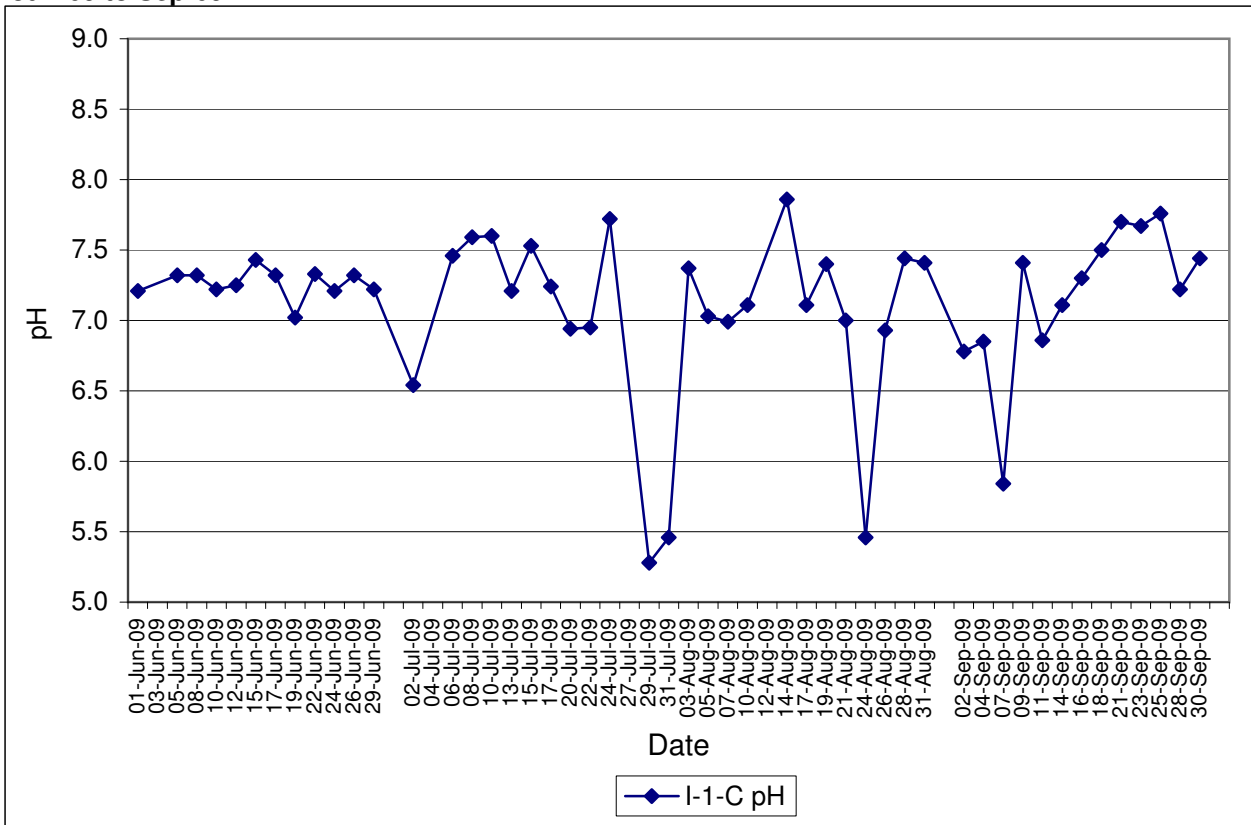
Contract No. DC/2007/12 - Design and Construction of Tsuen Wan Drainage Tunnel
Water Quality Results at Squatters (I-3-C)
Jun-09 to Sep-09



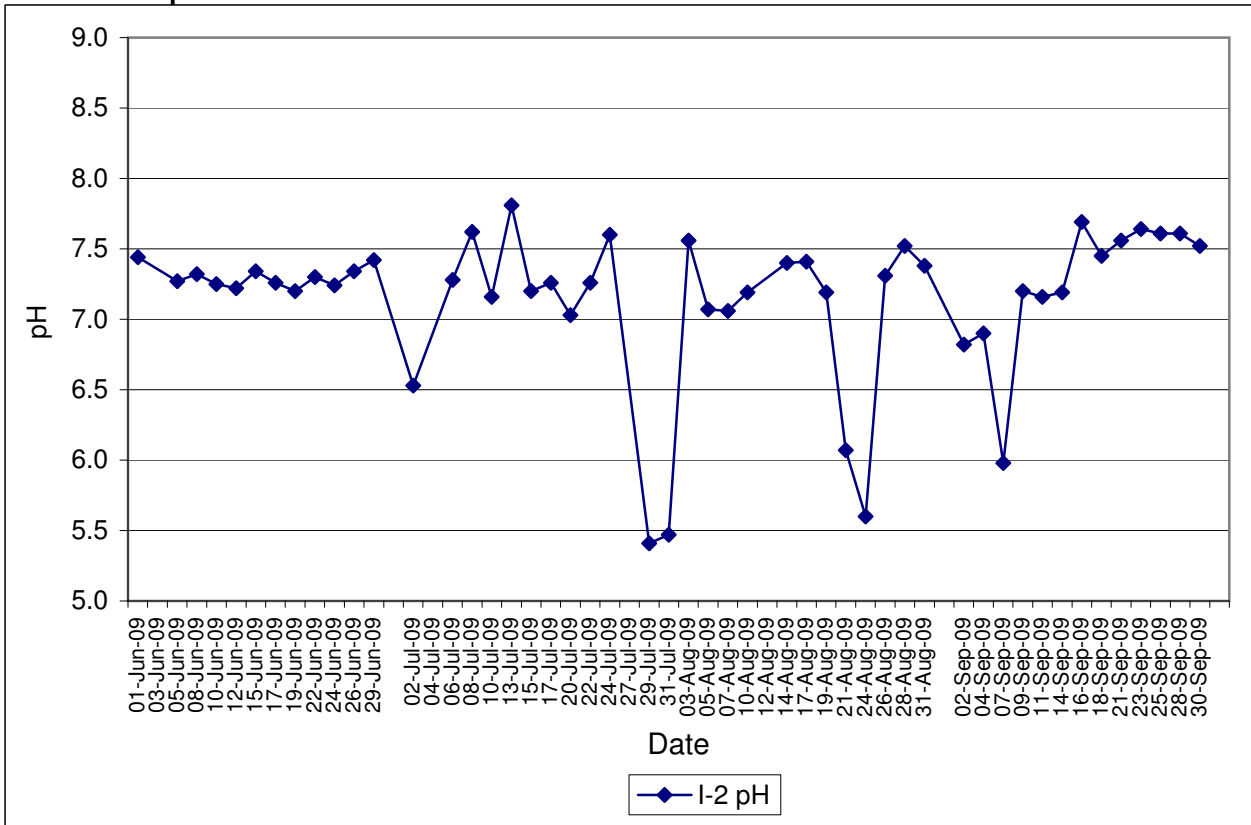
Contract No. DC/2007/12 - Design and Construction of Tsuen Wan Drainage Tunnel
Water Quality Results at Sik Sik Yuen Ho Fung College (I-1)
Jun-09 to Sep-09



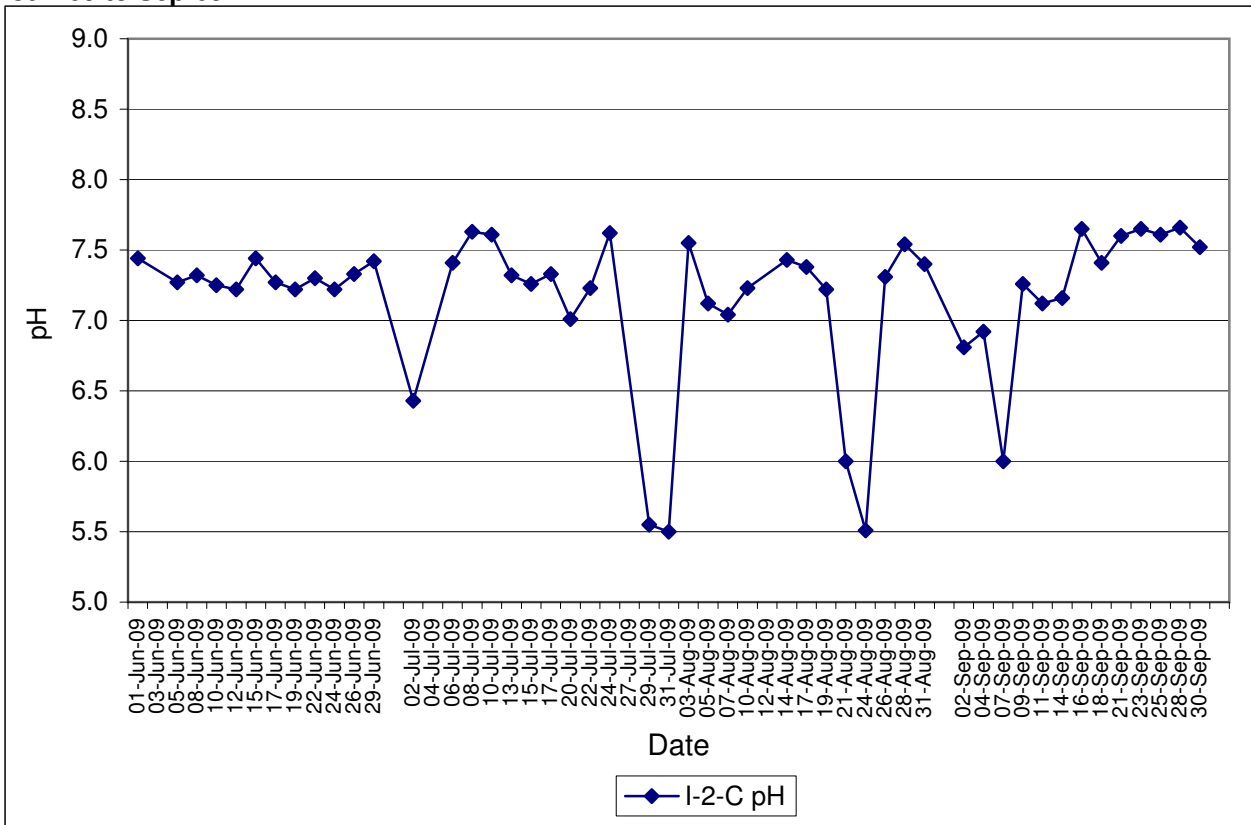
Contract No. DC/2007/12 - Design and Construction of Tsuen Wan Drainage Tunnel
Water Quality Results at Sik Sik Yuen Ho Fung College (I-1-C)
Jun-09 to Sep-09



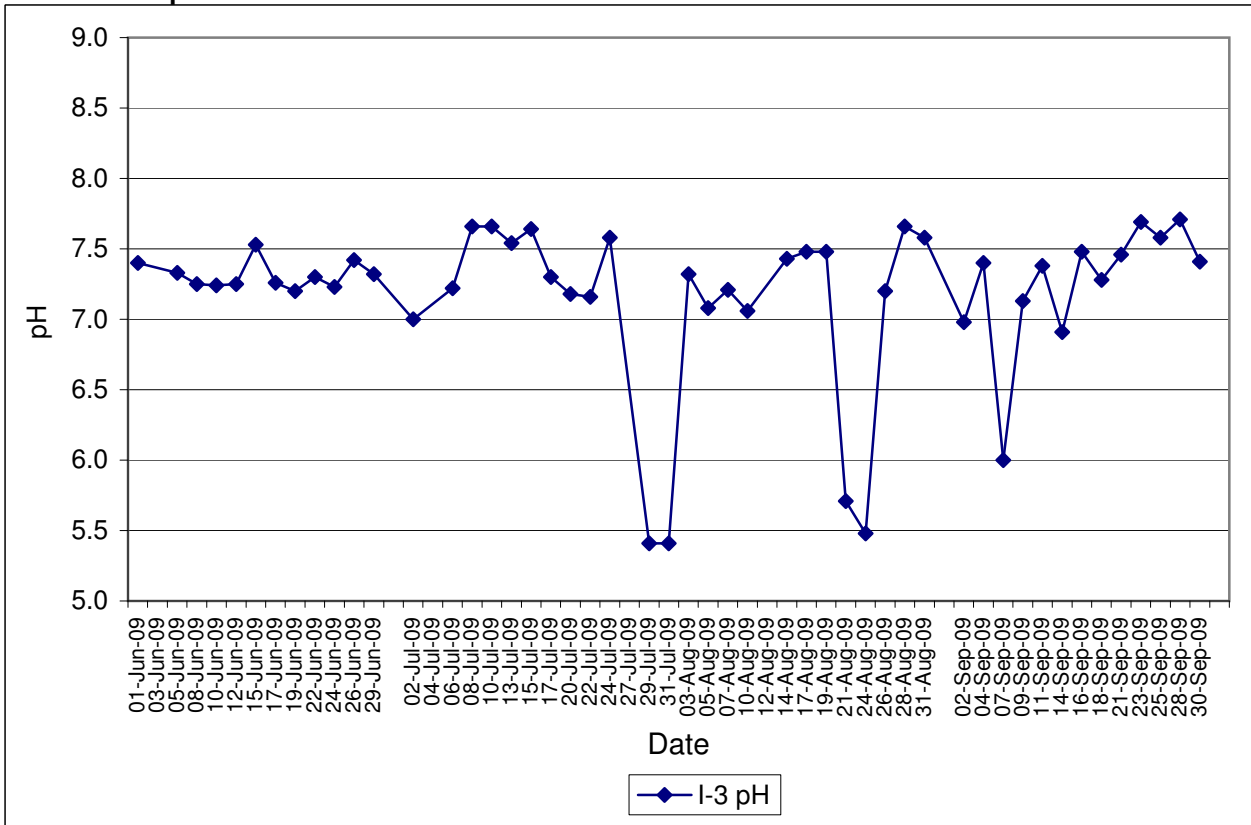
Contract No. DC/2007/12 - Design and Construction of Tsuen Wan Drainage Tunnel
Water Quality Results at Hong Hoi Chee Hong Temple (I-2)
Jun-09 to Sep-09



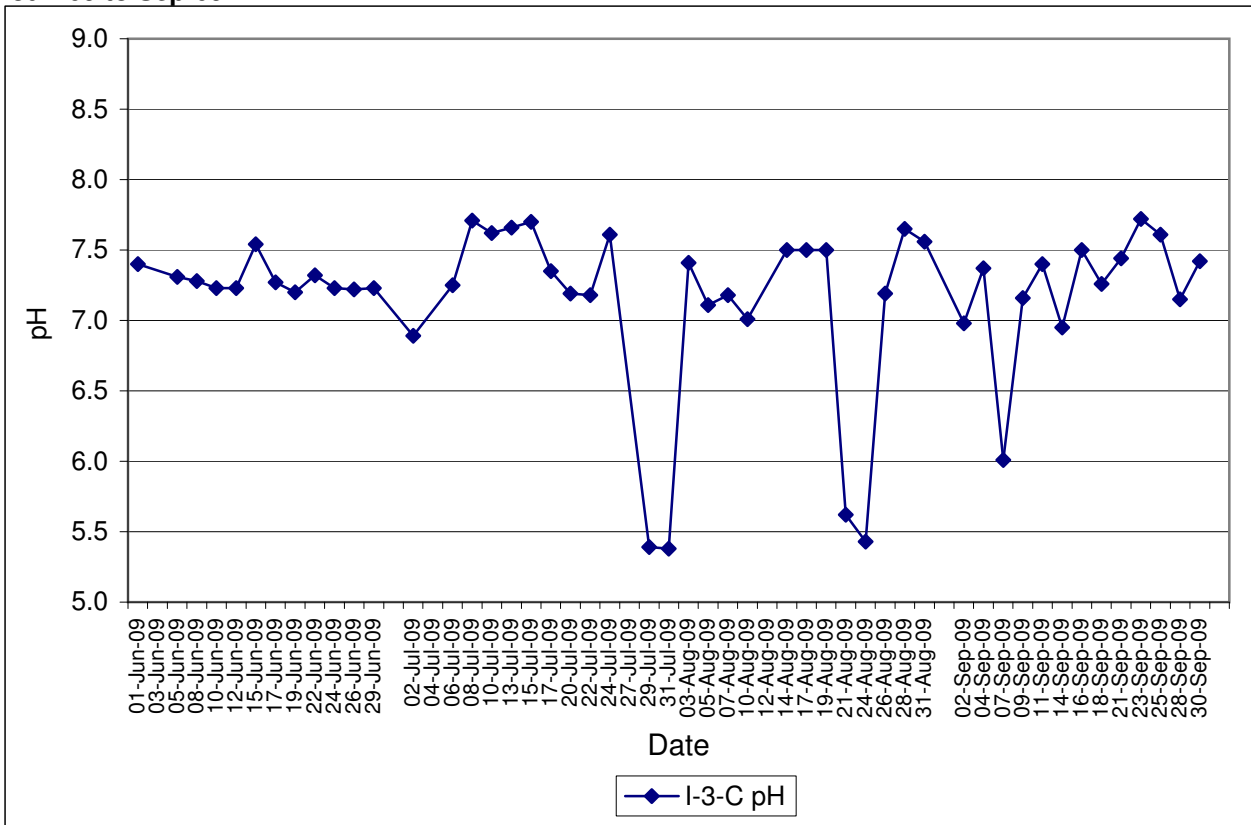
Contract No. DC/2007/12 - Design and Construction of Tsuen Wan Drainage Tunnel
Water Quality Results at Hong Hoi Chee Hong Temple (I-2-C)
Jun-09 to Sep-09



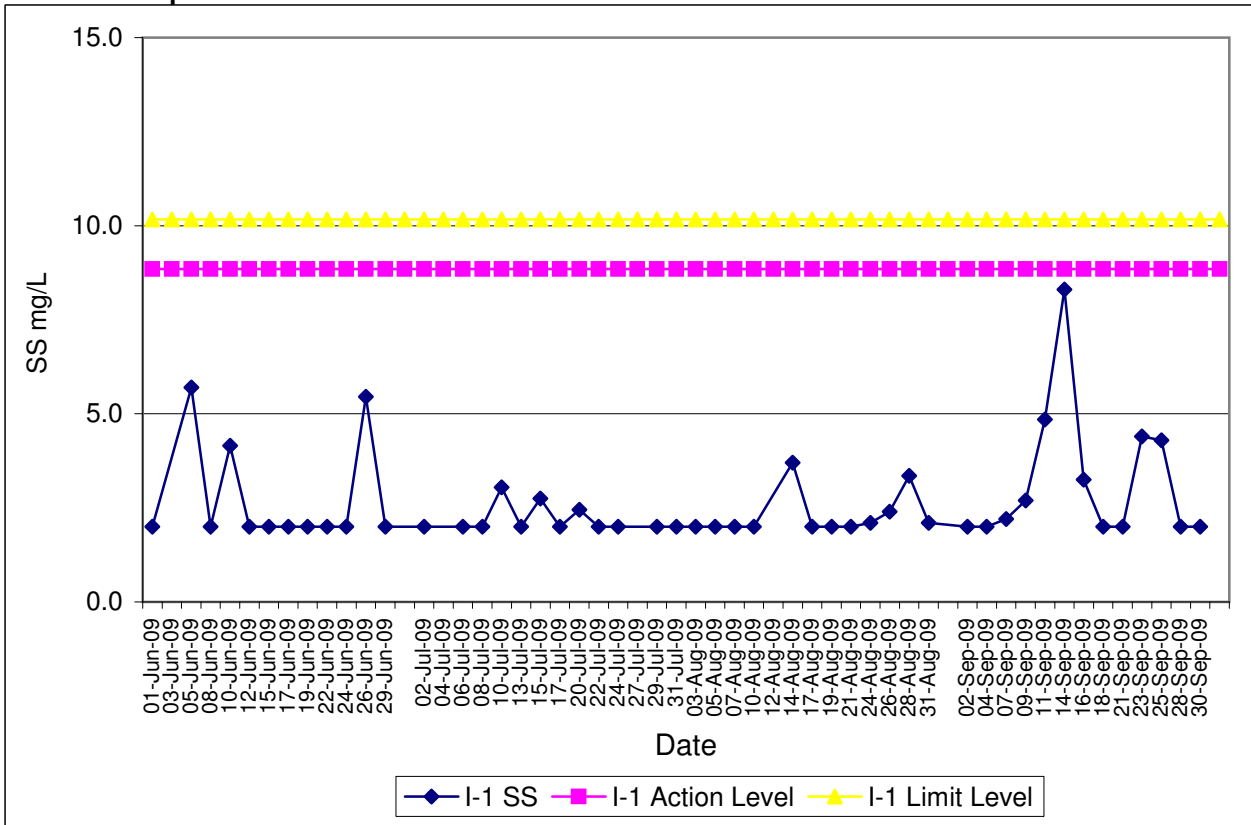
Contract No. DC/2007/12 - Design and Construction of Tsuen Wan Drainage Tunnel
Water Quality Results at Squatters (I-3)
Jun-09 to Sep-09



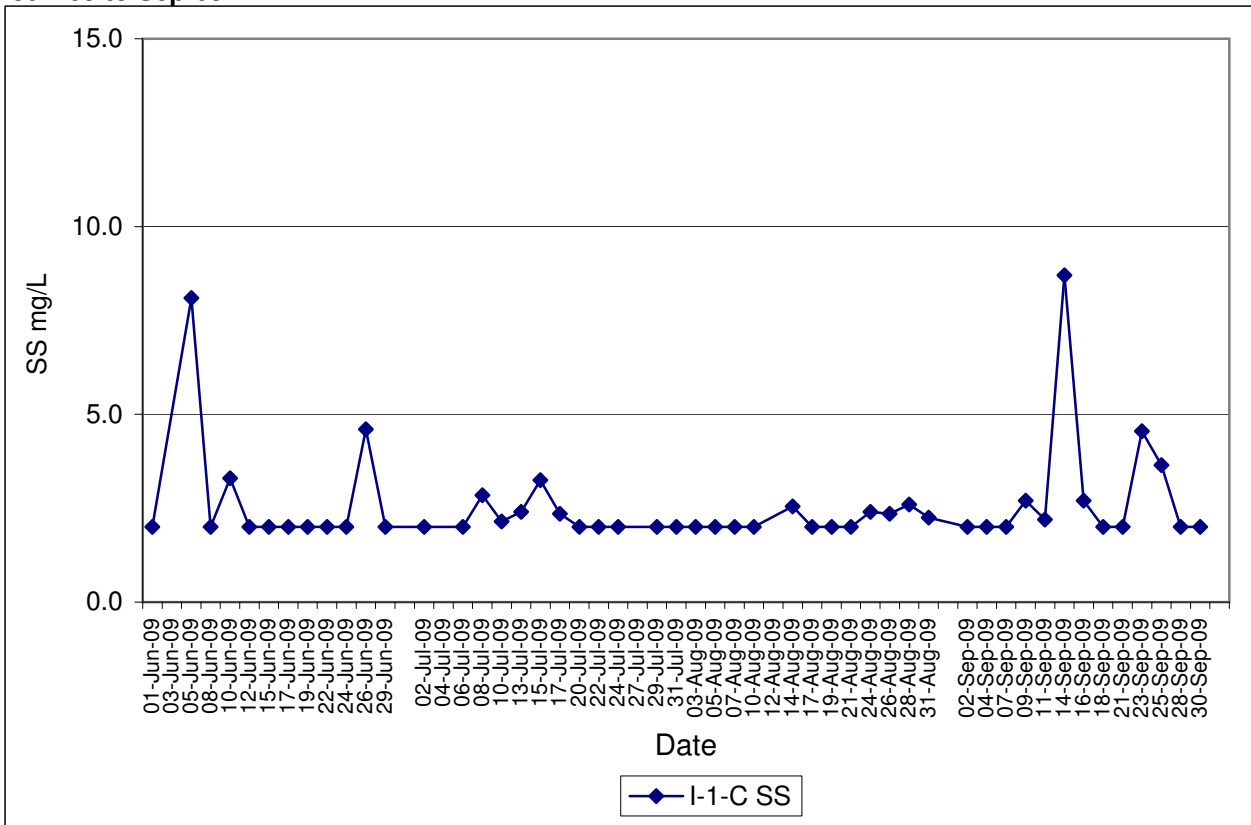
Contract No. DC/2007/12 - Design and Construction of Tsuen Wan Drainage Tunnel
Water Quality Results at Squatters (I-3-C)
Jun-09 to Sep-09



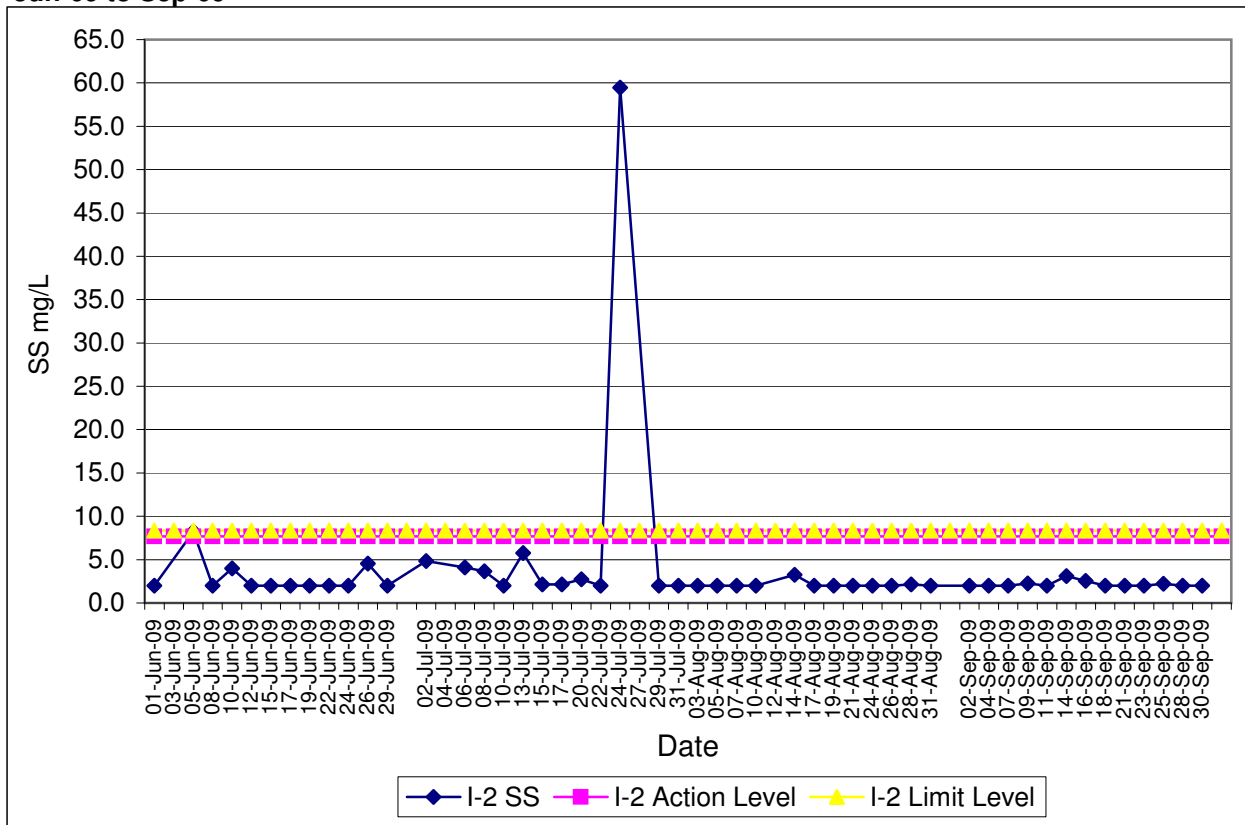
Contract No. DC/2007/12 - Design and Construction of Tsuen Wan Drainage Tunnel
Water Quality Results at Sik Sik Yuen Ho Fung College (I-1)
Jun-09 to Sep-09



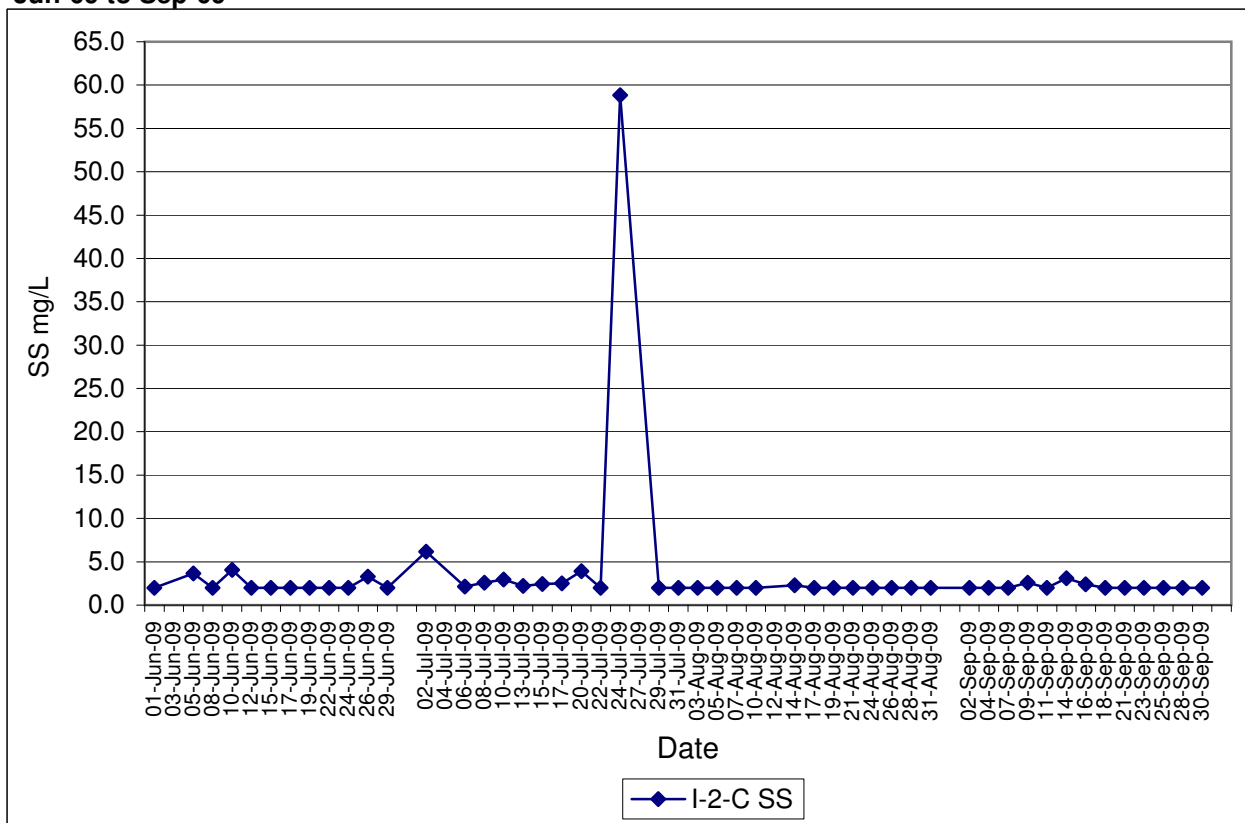
Contract No. DC/2007/12 - Design and Construction of Tsuen Wan Drainage Tunnel
Water Quality Results at Sik Sik Yuen Ho Fung College (I-1-C)
Jun-09 to Sep-09



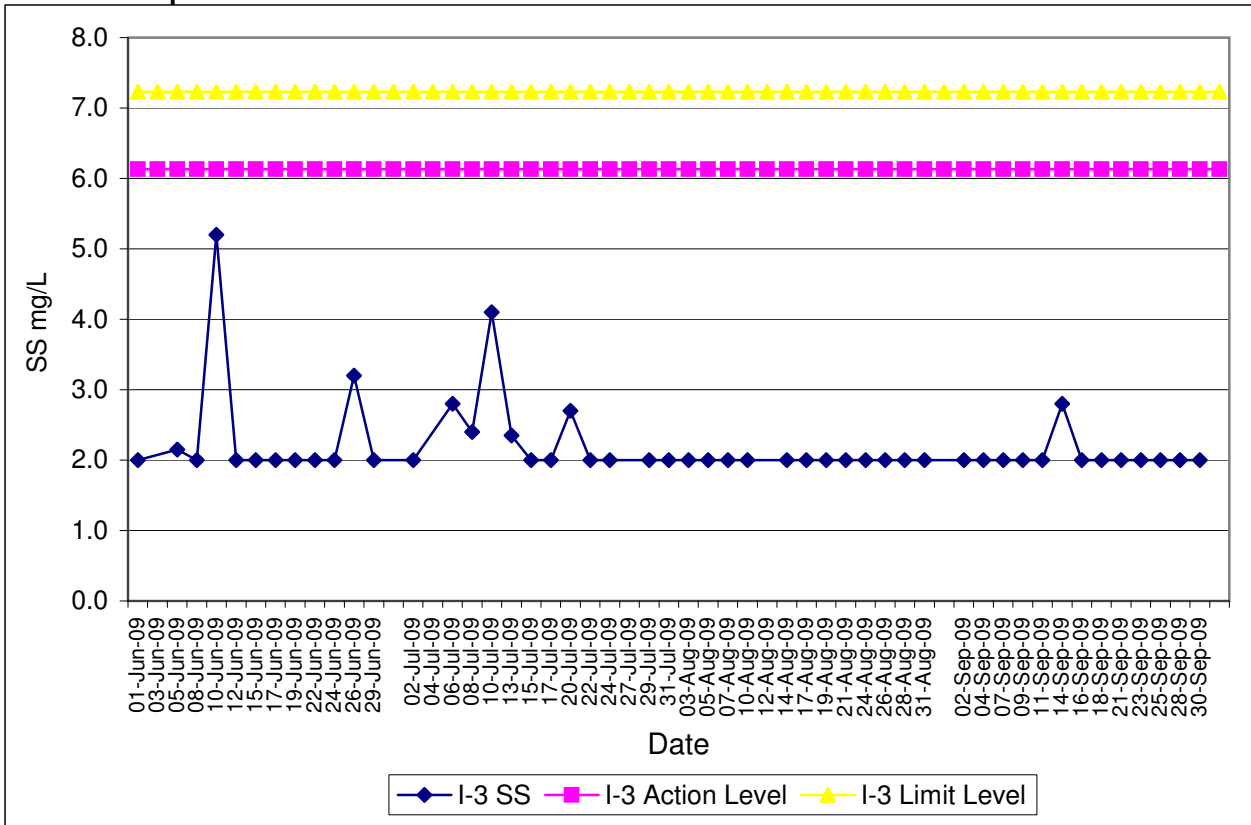
Contract No. DC/2007/12 - Design and Construction of Tsuen Wan Drainage Tunnel
Water Quality Results at Hong Hoi Chee Hong Temple (I-2)
Jun-09 to Sep-09



Contract No. DC/2007/12 - Design and Construction of Tsuen Wan Drainage Tunnel
Water Quality Results at Hong Hoi Chee Hong Temple (I-2-C)
Jun-09 to Sep-09



Contract No. DC/2007/12 - Design and Construction of Tsuen Wan Drainage Tunnel
Water Quality Results at Squatters (I-3)
Jun-09 to Sep-09



Contract No. DC/2007/12 - Design and Construction of Tsuen Wan Drainage Tunnel
Water Quality Results at Squatters (I-3-C)
Jun-09 to Sep-09

