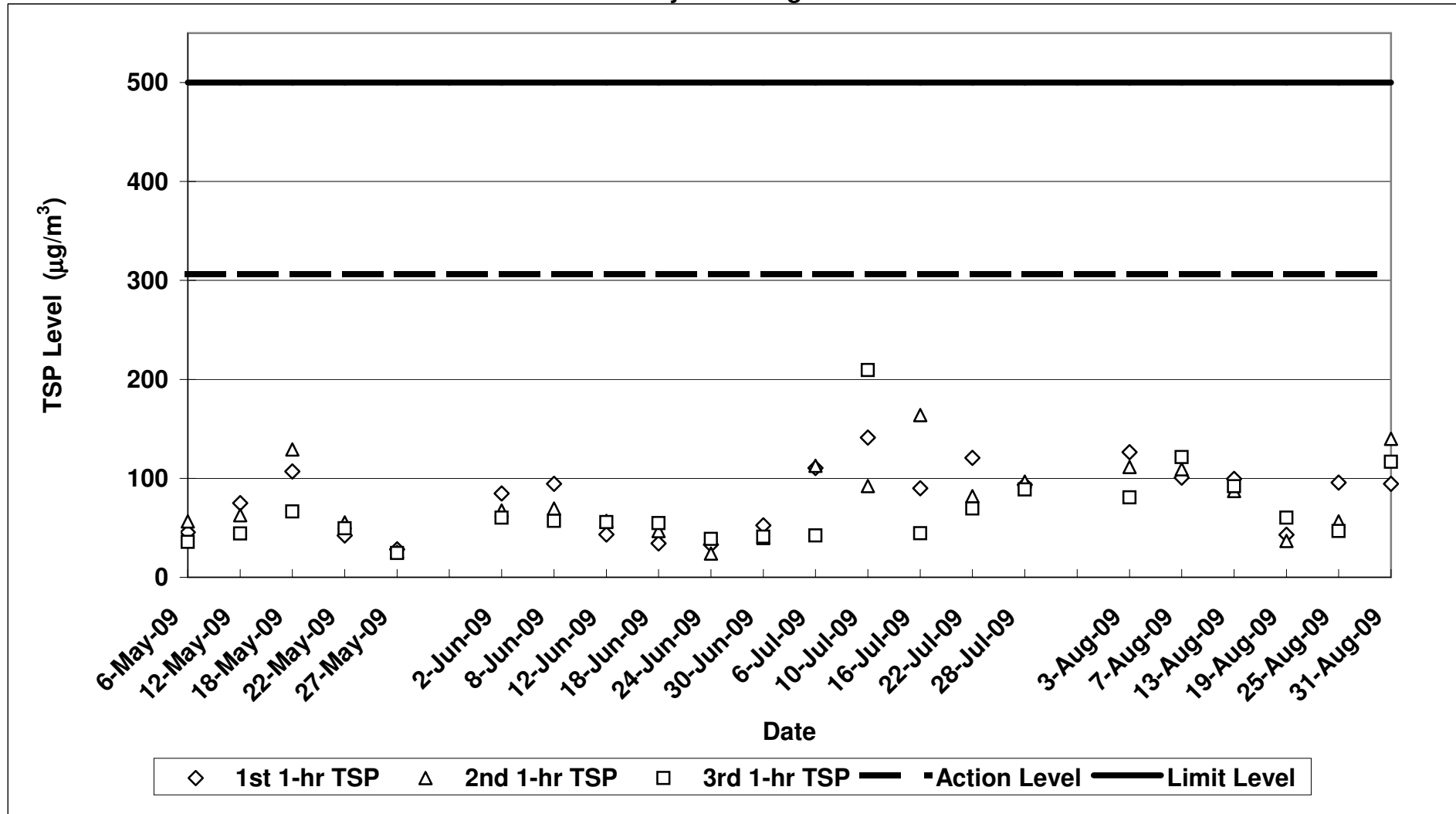


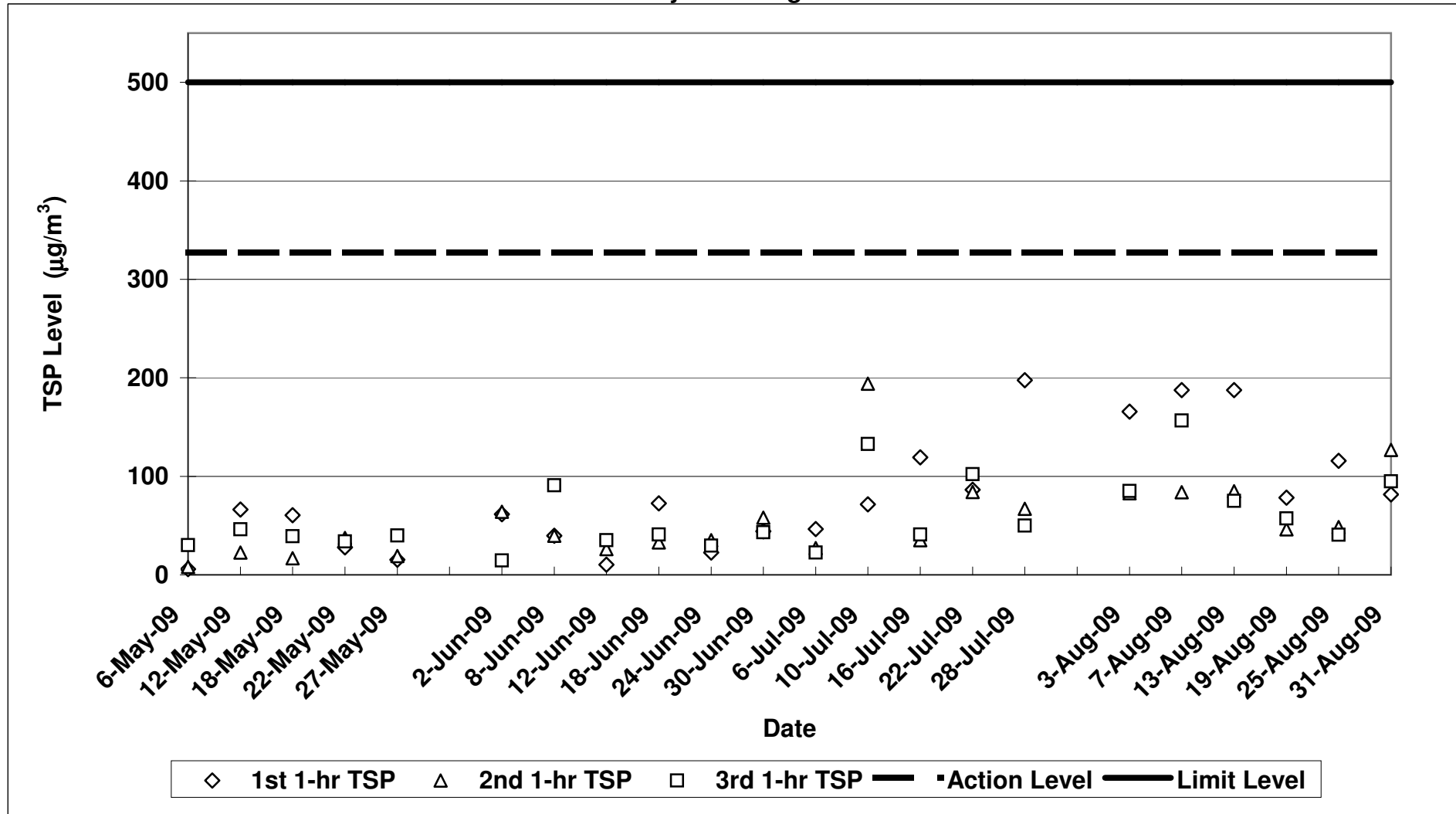
Air Quality Impact Monitoring Results (1-Hour TSP)

Location	Monitoring Date	Weather Conditions	Wind Speed with Direction (m/s)	Temp (°C)	Timer-I (m)	Timer-F (m)	Time (mins)	Flow-I (CFM)	Flow-F (CFM)	Flow-I (m ³ /min)	Flow-F (m ³ /min)	Flow-avg (m ³ /min)	Volume (m ³)	Weight-I (g)	Weight-F (g)	Weight-diff. (g)	1-hr TSP (µg/m ³)	Average 1-Hr TSP (µg/m ³)	Action/Limit Levels (µg/m ³)	Observation / Site Condition	Remark
Sik Sik Yuen Ho Fung College - Intake (ASR1)	03-Aug-09	Sunny	0.3E	27	578542	578942	60.0	40	40	1.46	1.46	1.46	87.84	2.8697	2.8608	0.0111	126.4	106.2	306.6/500	Breaking by backhoe,excavation work	Traffic
		Sunny	0.3E	27	578642	578742	60.0	40	40	1.46	1.46	1.46	87.84	2.8273	2.8371	0.0098	111.6				
		Sunny	0.3E	27	578742	578842	60.0	40	40	1.46	1.46	1.46	87.84	2.8423	2.8553	0.0071	80.8				
	07-Aug-09	Fine	0.4E	29	578842	579042	60.0	40	40	1.36	1.36	1.36	81.47	2.8542	2.8624	0.0082	100.7	110.5	306.6/500	Nil	Traffic
		Fine	0.4E	29	578942	579142	60.0	40	40	1.36	1.36	1.36	81.47	2.8417	2.8506	0.0089	109.2				
		Cloudy	0.5E	27	579142	579242	60.0	40	40	1.36	1.36	1.36	81.47	2.8058	2.8371	0.0081	99.4				
	13-Aug-09	Cloudy	0.5E	27	579242	579342	60.0	40	40	1.36	1.36	1.36	81.47	2.8770	2.8841	0.0071	87.1	92.9	306.6/500	Breaking by backhoe,excavation work	Traffic
		Cloudy	0.5E	27	579342	579442	60.0	40	40	1.36	1.36	1.36	81.47	2.8456	2.8531	0.0075	92.1				
		Cloudy	0.2E	31	579442	579542	60.0	40	40	1.36	1.36	1.36	81.47	2.8276	2.8311	0.0035	43.0				
	19-Aug-09	Cloudy	0.2E	31	579542	579642	60.0	40	40	1.36	1.36	1.36	81.47	2.9150	2.9180	0.0030	38.8	46.6	306.6/500	Breaking by backhoe,excavation work	Traffic
		Cloudy	0.2E	31	579642	579742	60.0	40	40	1.36	1.36	1.36	81.47	2.8452	2.8501	0.0049	60.1				
		Sunny	0.2E	32	579742	579842	60.0	40	40	1.36	1.36	1.36	81.47	2.8917	2.8995	0.0078	95.7				
25-Aug-09	Sunny	0.2E	32	579842	579942	60.0	40	40	1.36	1.36	1.36	81.47	2.8820	2.8866	0.0046	56.5	66.3	306.6/500	Breaking by backhoe,excavation work	Traffic	
	Sunny	0.2E	32	579942	580042	60.0	40	40	1.36	1.36	1.36	81.47	2.8844	2.8882	0.0038	46.6					
	Sunny	0.2E	33	580042	580142	60.0	40	40	1.36	1.36	1.36	81.47	2.8321	2.8398	0.0077	94.5					
31-Aug-09	Sunny	0.2E	33	580142	580242	60.0	40	40	1.36	1.36	1.36	81.47	2.8560	2.8674	0.0114	139.9	117.0	306.6/500	Breaking by backhoe,excavation work	Traffic	
	Sunny	0.2E	33	580242	580342	60.0	40	40	1.36	1.36	1.36	81.47	2.8768	2.8853	0.0095	116.6					
	Sunny	0.2E	33	580342	580442	60.0	40	40	1.36	1.36	1.36	81.47	2.8788	2.8853	0.0065	85.7					
Hong Hoi Chee Hong Temple - Intake (ASR3)	03-Aug-09	Sunny	0.3E	27	547390	547190	60.0	40	40	1.47	1.47	1.47	88.12	2.8598	2.8744	0.0146	165.7	111.2	327.4/500	Excavation by backhoe,hammering	Traffic
		Sunny	0.3E	27	547190	547290	60.0	40	40	1.47	1.47	1.47	88.12	2.8400	2.8473	0.0073	85.1				
		Sunny	0.3E	27	547290	547390	60.0	40	40	1.47	1.47	1.47	88.12	2.8129	2.8204	0.0075	85.1				
	07-Aug-09	Fine	0.5E	29	547390	547490	60.0	40	40	1.51	1.51	1.51	90.71	2.8230	2.8400	0.0170	187.4	142.6	327.4/500	Nil	Traffic
		Fine	0.5E	29	547490	547590	60.0	40	40	1.51	1.51	1.51	90.71	2.8624	2.8700	0.0076	83.8				
		Fine	0.5E	29	547590	547690	60.0	40	40	1.51	1.51	1.51	90.71	2.8688	2.8830	0.0142	156.5				
	13-Aug-09	Cloudy	0.4E	27	547690	547790	60.0	40	40	1.51	1.51	1.51	90.71	2.9054	2.9224	0.0170	187.4	115.8	327.4/500	Drilling work	Traffic
		Cloudy	0.4E	27	547790	547890	60.0	40	40	1.51	1.51	1.51	90.71	2.8773	2.8850	0.0077	84.9				
		Cloudy	0.4E	27	547890	547990	60.0	40	40	1.51	1.51	1.51	90.71	2.8942	2.9010	0.0068	75.0				
	19-Aug-09	Cloudy	0.2E	31	547990	548090	60.0	40	40	1.51	1.51	1.51	90.71	2.8641	2.8712	0.0071	78.3	60.6	327.4/500	Drilling work	Traffic
		Cloudy	0.2E	31	548090	548190	60.0	40	40	1.51	1.51	1.51	90.71	2.8471	2.8513	0.0042	46.3				
		Cloudy	0.2E	31	548190	548290	60.0	40	40	1.51	1.51	1.51	90.71	2.8475	2.8527	0.0052	57.3				
25-Aug-09	Sunny	0.2E	32	548290	548390	60.0	40	40	1.51	1.51	1.51	90.71	2.8740	2.8845	0.0105	115.8	68.3	327.4/500	Drilling work	Traffic	
	Sunny	0.2E	32	548390	548490	60.0	40	40	1.51	1.51	1.51	90.71	2.8940	2.8984	0.0044	48.5					
	Sunny	0.2E	32	548490	548590	60.0	40	40	1.51	1.51	1.51	90.71	2.8910	2.8947	0.0037	40.8					
31-Aug-09	Sunny	0.3E	33	548590	548690	60.0	40	40	1.51	1.51	1.51	90.71	2.8262	2.8336	0.0074	81.6	101.1	327.4/500	Drilling work	Traffic	
	Sunny	0.3E	33	548690	548790	60.0	40	40	1.51	1.51	1.51	90.71	2.8746	2.8861	0.0115	126.8					
	Sunny	0.3E	33	548790	548890	60.0	40	40	1.51	1.51	1.51	90.71	2.8492	2.8578	0.0086	94.8					
Long Beach Gardens - Outfall (ASR8)	03-Aug-09	Sunny	0.8E	27	602080	602180	60.0	40	40	1.28	1.28	1.28	76.51	2.8426	2.8525	0.0099	129.4	129.4	336.6/500	Breaking by backhoe,excavation work	Traffic
		Sunny	0.8E	27	602180	602280	60.0	40	40	1.28	1.28	1.28	76.51	2.8150	2.8253	0.0103	134.6				
		Sunny	0.8E	27	602280	602380	60.0	40	40	1.28	1.28	1.28	76.51	2.8370	2.8465	0.0095	124.2				
	07-Aug-09	Fine	0.5E	29	602380	602480	60.0	40	40	1.24	1.24	1.24	74.14	2.8556	2.8631	0.0075	101.2	119.1	336.6/500	Breaking by backhoe,excavation work	Traffic
		Fine	0.5E	29	602480	602580	60.0	40	40	1.24	1.24	1.24	74.14	2.8322	2.8399	0.0077	103.9				
		Fine	0.5E	29	602580	602680	60.0	40	40	1.24	1.24	1.24	74.14	2.9042	2.9155	0.0113	152.4				
	13-Aug-09	Cloudy	0.3E	27	602680	602780	60.0	40	40	1.24	1.24	1.24	74.14	2.8463	2.8566	0.0103	138.9	115.1	336.6/500	Drilling work, breaking be backhoe	Traffic
		Cloudy	0.3E	27	602780	602880	60.0	40	40	1.24	1.24	1.24	74.14	2.8438	2.8511	0.0073	98.5				
		Cloudy	0.3E	27	602880	602980	60.0	40	40	1.24	1.24	1.24	74.14	2.8600	2.8680	0.0080	107.9				
	19-Aug-09	Cloudy	0.3E	31	602980	603080	60.0	40	40	1.24	1.24	1.24	74.14	2.8240	2.8313	0.0073	98.5	88.6	336.6/500	Drilling work, breaking be backhoe	Traffic
		Cloudy	0.3E	31	603080	603180	60.0	40	40	1.24	1.24	1.24	74.14	2.8548	2.8607	0.0059	79.6				
		Cloudy	0.3E	31	603180	603280	60.0	40	40	1.24	1.24	1.24	74.14	2.8480	2.8545	0.0065	87.7				
25-Aug-09	Sunny	0.8E	32	603280	603380	60.0	40	40	1.24	1.24	1.24	74.14	2.9201	2.9281	0.0080	107.9	86.3	336.6/500	Breaking by backhoe,excavation work	Traffic	
	Sunny	0.8E	32	603380	603480	60.0	40	40	1.24	1.24	1.24	74.14	2.8963	2.9030	0.0067	80.7					
	Sunny	0.8E	32	603480	603580	60.0	40	40	1.24	1.24	1.24	74.14	2.8257	2.8392	0.0045	63.7					
31-Aug-09	Sunny	0.3E	33	603580	603680	60.0	40	40	1.24	1.24	1.24	74.14	2.8067	2.8133	0.0066	89.0	103.4	336.6/500	Breaking by backhoe,excavation work	Traffic	
	Sunny	0.3E	33	603680	603780	60.0	40	40	1.24	1.24	1.24	74.14	2.8460	2.8546	0.0086	116.0					
	Sunny	0.3E	33	603780	603880	60.0	40	40	1.24	1.24	1.24	74.14	2.8094	2.8172	0.0078	105.2					
Greenview Terrace - Outfall (ASR9)	03-Aug-09	Sunny	0.9E	27	533980	534080	60.0	40	40	1.50	1.50	1.50	89.94	2.8424	2.8580	0.0156	173.5	127.9	329.2/500	Breaking by backhoe,excavation work	Traffic
		Sunny	0.9E	27	534080	534180	60.0	40	40	1.50	1.50	1.50	89.94	2.8441	2.8535	0.0094	104.5				
		Sunny	0.9E	27	534180	534280	60.0	40	40	1.50	1.50	1.50	89.94	2.8300	2.8395	0.0095	105.6				
	07-Aug-09	Fine	0.4E	29	534280	534380	60.0	40	40	1.44	1.44	1.44	86.44	2.8552	2.8653	0.0101	116.8	125.3	329.2/500	Breaking by backhoe,excavation work	Traffic
		Fine	0.4E	29	534380	534480	60.0	40	40	1.44	1.44	1.44	86.44	2.8547	2.8625	0.0078	90.2				
		Fine	0.4E	29	534480	534580	60.0	40	40	1.44	1.44	1.44	86.44	2.8620	2.8766	0.0146	168.9				
	13-Aug-09	Cloudy	0.5E	27	534580	534680	60.0	40	40	1.44	1.44	1.44	86.44	2.8058	2.8265	0.0207	239.5	137.7	329.2/500	Drilling work,Breaking by backhoe	Traffic
		Cloudy	0.5E	27	534680	534780	60.0	40													

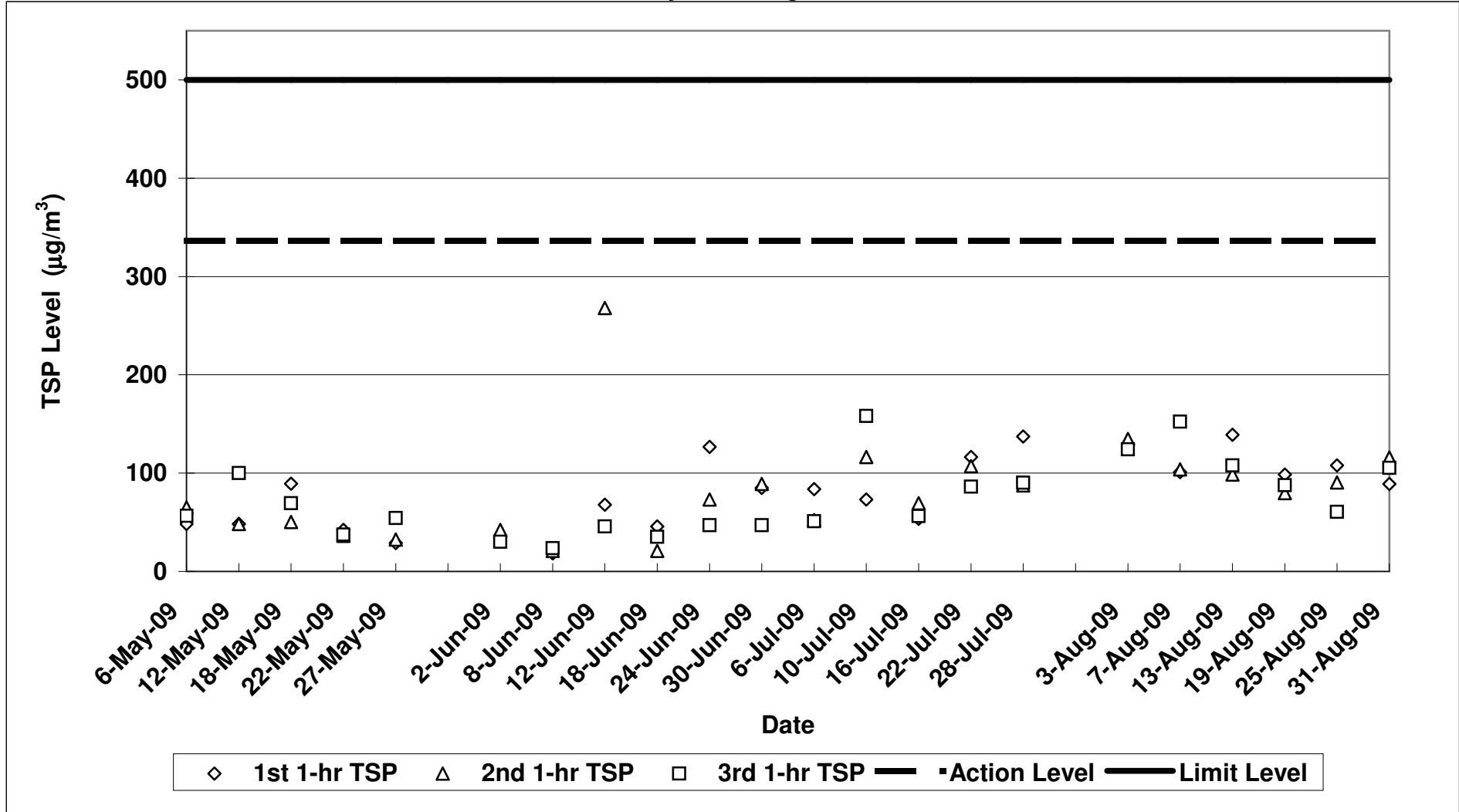
**Contract No. DC/2007/12 - Design and Construction of Tsuen Wan Drainage Tunnel
 Air Quality Monitoring (1-hr TSP) Results at Sik Sik Yuen Ho Fung College - Intake (ASR1)
 May-09 to Aug-09**



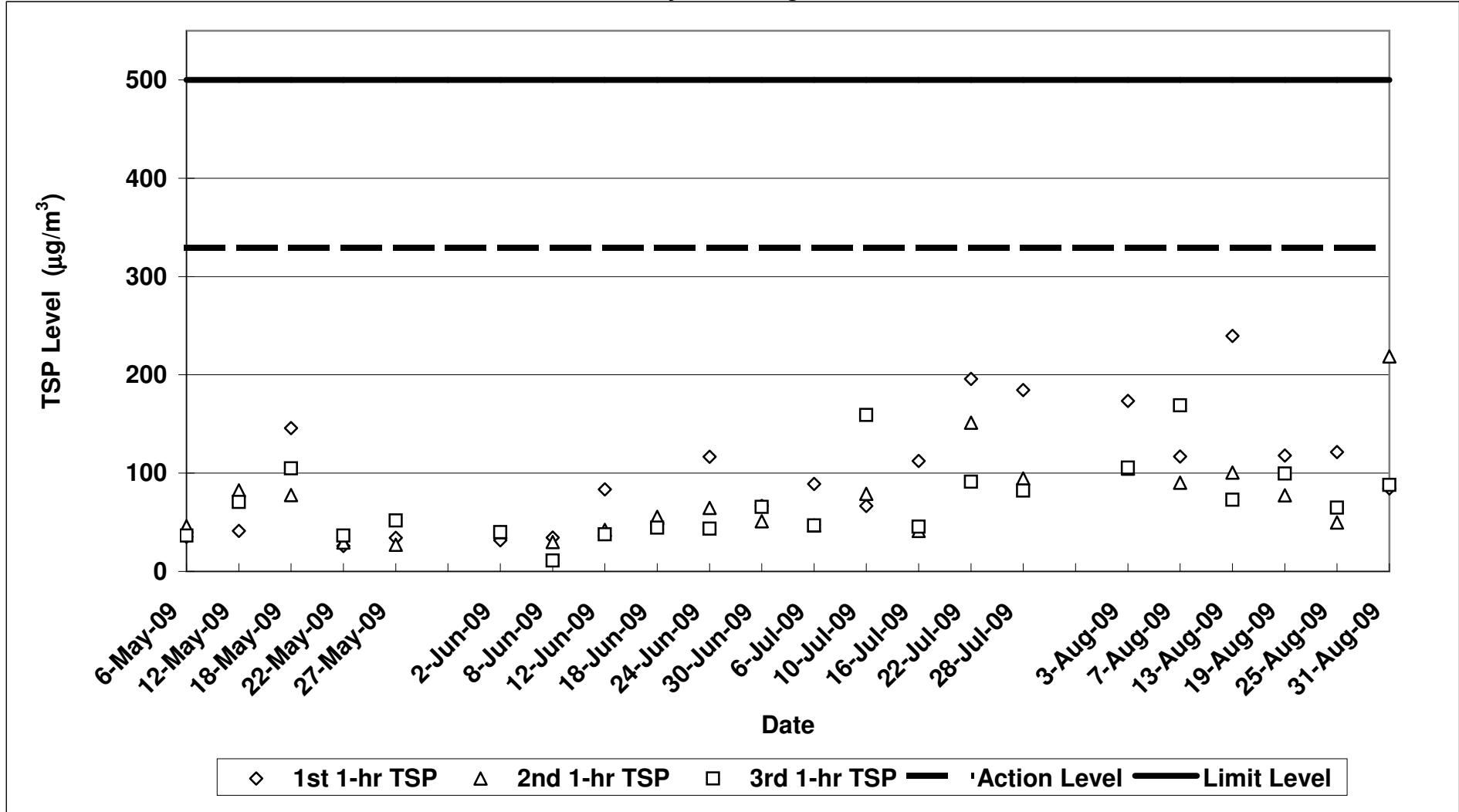
**Contract No. DC/2007/12 - Design and Construction of Tsuen Wan Drainage Tunnel
Air Quality Monitoring (1-hr TSP) Results at Hong Hoi Chee Hong Temple - Intake (ASR3)
May-09 to Aug-09**



**Contract No. DC/2007/12 - Design and Construction of Tsuen Wan Drainage Tunnel
 Air Quality Monitoring (1-hr TSP) Results at Long Beach Gardens - Outfall (ASR8)
 May-09 to Aug-09**



**Contract No. DC/2007/12 - Design and Construction of Tsuen Wan Drainage Tunnel
 Air Quality Monitoring (1-hr TSP) Results at Greenview Terrance - Outfall (ASR9)
 May-09 to Aug-09**



Contract No. DC/2007/12 - Design and Construction of Tsuen Wan Drainage Tunnel

Noise Impact Monitoring Results

Monitoring Locations	Date	Weather Conditions	Temperature (°C)	Wind Speed (m/s)	Wind Direction	Start Time	End Time	BL ¹ dB(A)	LL ² dB(A)	L _{eq} (30min) dB(A)	L ₁₀ (30min) dB(A)	L ₉₀ (30min) dB(A)	CNL ³ dB(A)	Observation / Site Condition	Remark	
Sik Sik Yuen Ho Fung College NSR 1	03-Aug-09	Sunny	27	0.3	E	11:13	11:43	66.1	70	66.9	69.3	62.4	-	Breaking by backhoe,excavation work	Traffic noise	
	14-Aug-09	Cloudy	28	0.2	E	10:00	10:30		70	70.3	72.2	67.3	68.2	-	Breaking by backhoe,excavation work	Traffic noise, aircraft noise
	19-Aug-09	Cloudy	31	0.2	E	15:20	15:50		70	66.3	68.9	61.5	-	Breaking by backhoe,excavation work	Traffic noise, aircraft noise	
	25-Aug-09	Sunny	32	0.8	E	15:05	15:35		70	69.4	71.5	65.8	-	Breaking by backhoe,excavation work	Traffic noise	
	31-Aug-09	Sunny	33	0.2	E	16:15	16:45		70	64.1	67.0	58.6	-	Excavation work	Traffic noise, aircraft noise	
Hong Hoi Chee Hong Temple NSR 3	03-Aug-09	Sunny	27	0.3	E	10:35	11:05	57.9	75	67.5	70.6	61.5	-	Excavation by backhoe,hammering	Traffic noise	
	14-Aug-09	Cloudy	28	0.3	E	10:38	11:08		75	71.1	72.1	69.4	-	Drilling work	Traffic noise, aircraft noise	
	19-Aug-09	Cloudy	31	0.2	E	14:42	15:12		75	70.4	71.8	68.8	-	Drilling work	Traffic noise, aircraft noise	
	25-Aug-09	Sunny	32	0.2	E	14:10	14:40		75	72.5	73.4	71.4	-	Drilling work	Traffic noise	
	31-Aug-09	Sunny	33	0.3	E	15:30	16:00		75	72.4	73.9	70.2	-	Drilling work, breaking by backhoe	Traffic noise, aircraft noise	
Squatters NSR 6	03-Aug-09	Sunny	27	0.3	E	16:05	16:35	61.2	75	57.1	60.3	50.1	-	Breaking by backhoe,excavation work	Birds noise	
	14-Aug-09	Cloudy	28	0.3	E	13:20	13:50		75	55.8	58.4	51.2	-	Excavation work	Birds noise,aircraft noise	
	19-Aug-09	Cloudy	31	0.2	E	11:00	11:30		75	55.7	60.0	48.6	-	Excavation work	Birds noise,aircraft noise	
	25-Aug-09	Sunny	32	0.3	E	13:05	13:35		75	56.0	59.7	48.9	-	Excavation work	Birds noise,aircraft noise	
	31-Aug-09	Sunny	33	0.3	E	13:40	14:10		75	58.9	61.0	53.5	-	Excavation work	Birds noise, aircraft noise	
Long Beach Gardens NSR 8	03-Aug-09	Sunny	27	0.8	E	14:25	14:55	60.9	75	68.0	70.7	62.2	-	Breaking by backhoe,excavation work	Traffic noise	
	14-Aug-09	Cloudy	28	0.3	E	15:15	15:45		75	65.0	66.8	62.0	-	Drilling work, breaking by backhoe	Traffic noise, aircraft noise	
	19-Aug-09	Cloudy	31	0.3	E	14:00	14:30		75	68.9	72.1	64.3	-	Drilling work, breaking by backhoe	Traffic noise, aircraft noise	
	25-Aug-09	Sunny	32	0.8	E	11:15	11:45		75	66.3	69.1	62.4	-	Breaking by backhoe,excavation work	Traffic noise	
	28-Aug-09*	Sunny	32	0.2	E	16:15	16:45		75	66.4	69.0	62.6	-	Breaking by backhoe,excavation work	Traffic noise, aircraft noise	
Greenview Terrace NSR 9 NSR 9	03-Aug-09	Sunny	27	0.9	E	15:13	15:43	59.7	75	72.3	75.1	67.7	-	Breaking by backhoe,excavation work	Traffic noise	
	10-Aug-09*	Fine	28	0.8	E	10:27	10:57		75	73.0	75.5	67.6	-	Breaking by backhoe,excavation work	Traffic noise	
	12-Aug-09*	Cloudy	28	0.6	E	09:57	10:27		75	74.1	77.3	66.3	-	Breaking by backhoe,excavation work	Traffic noise	
	14-Aug-09	Cloudy	28	0.2	E	14:35	15:05		75	72.6	74.5	69.2	-	Drilling work,Breaking by backhoe	Traffic noise, aircraft noise	
	15-Aug-09*	Fine	30	0.2	E	09:48	10:18		75	71.5	73.6	68.4	-	Breaking by backhoe,excavation work	Traffic noise, aircraft noise	
	17-Aug-09*	Fine	30	0.2	E	15:41	16:11		75	70.9	72.9	66.9	-	Breaking by backhoe,excavation work	Traffic noise, aircraft noise	
	19-Aug-09	Cloudy	31	1.3	E	13:15	13:45		75	72.1	74.2	69.5	-	Drilling work,Breaking by backhoe	Traffic noise, aircraft noise	
	25-Aug-09	Sunny	32	0.8	E	10:25	10:55		75	73.0	76.2	66.2	-	Breaking by backhoe,excavation work	Traffic noise	
	28-Aug-09*	Sunny	32	0.2	E	14:34	15:04		75	73.5	76.2	67.3	-	Breaking by backhoe,excavation work	Traffic noise, aircraft noise	
	31-Aug-09	Sunny	33	0.5	E	10:10	10:40		75	73.5	76.3	61.9	-	Breaking by backhoe,excavation work	Traffic noise	

1: Baseline Noise Level

2: Limit Level

3: Corrected Noise Level

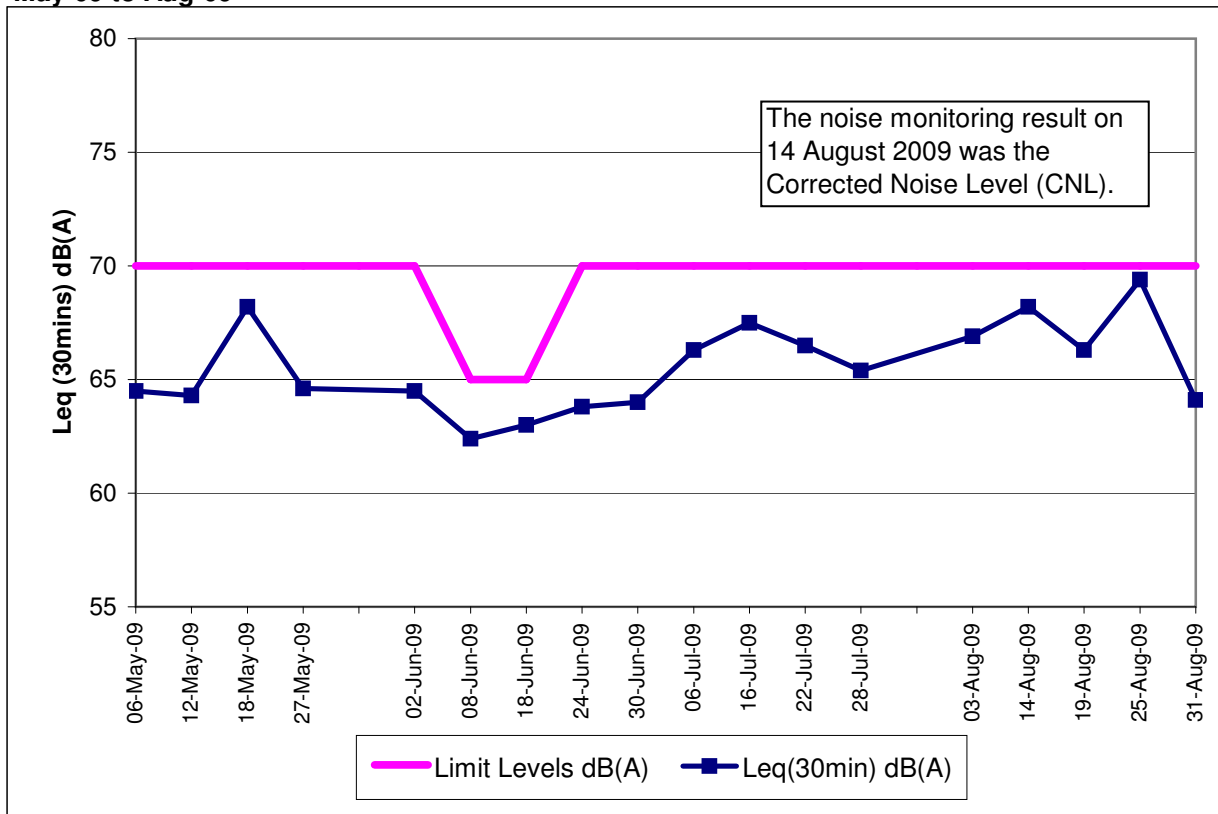
Note:

The limit level of NSR1 is 65dB(A) during school examination period.

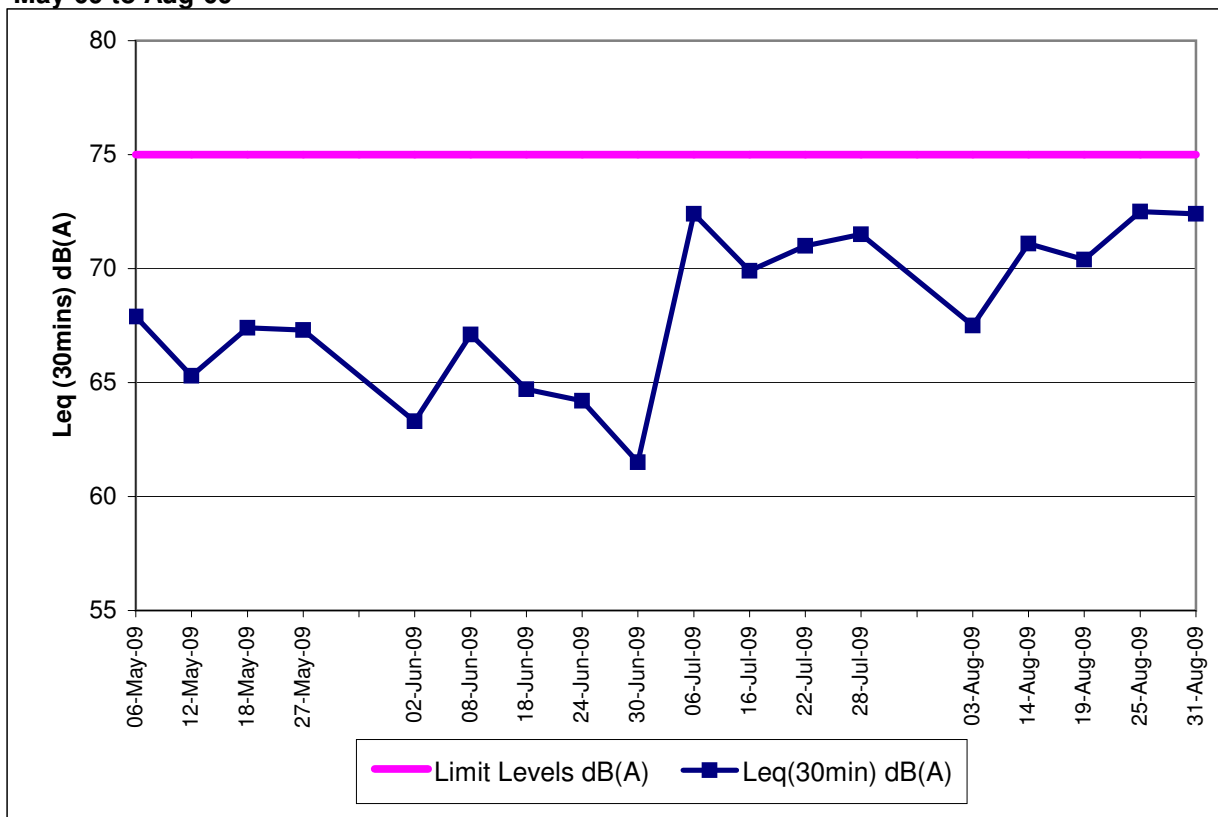
Red Bold indicates an exceedance of Limit Level

* means additional noise monitorings

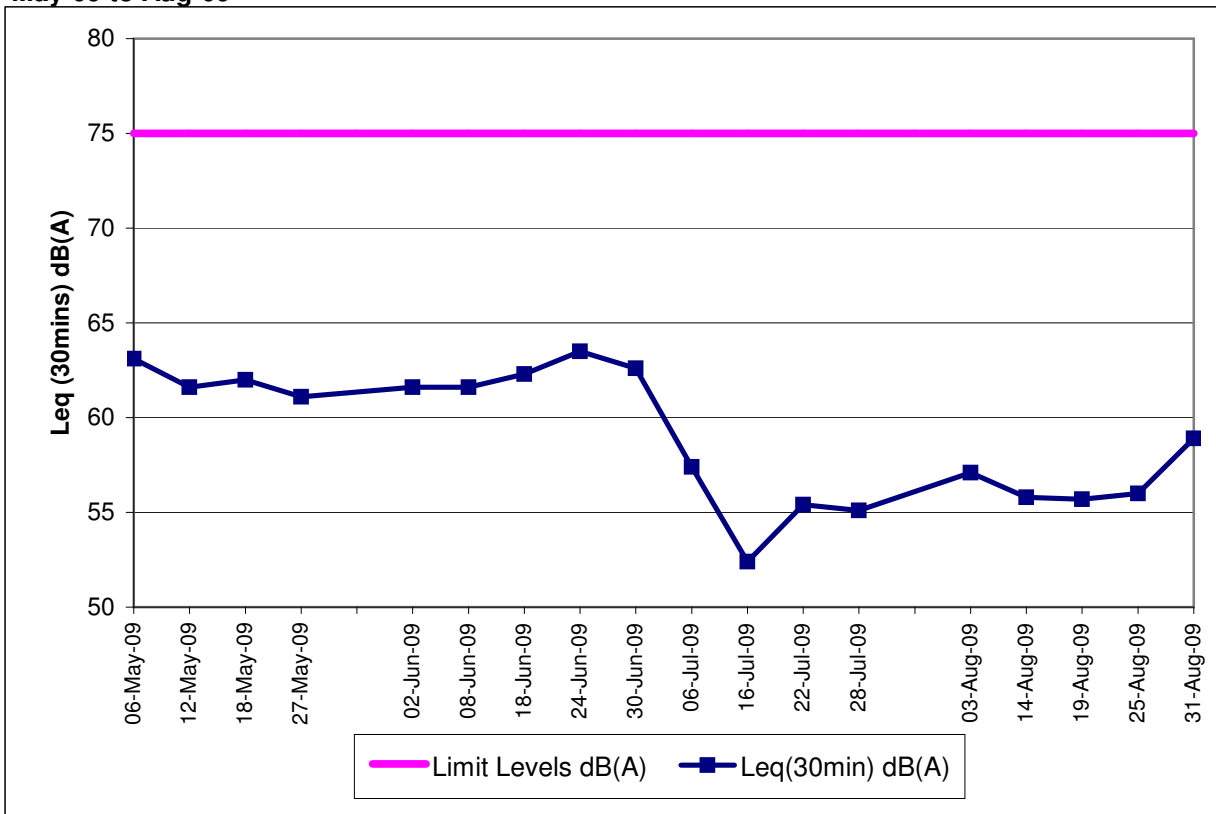
**Contract No. DC/2007/12 - Design and Construction of Tsuen Wan Drainage Tunnel
Noise Monitoring Results at Sik Sik Yuen Ho Fung College (NSR 1)
May-09 to Aug-09**



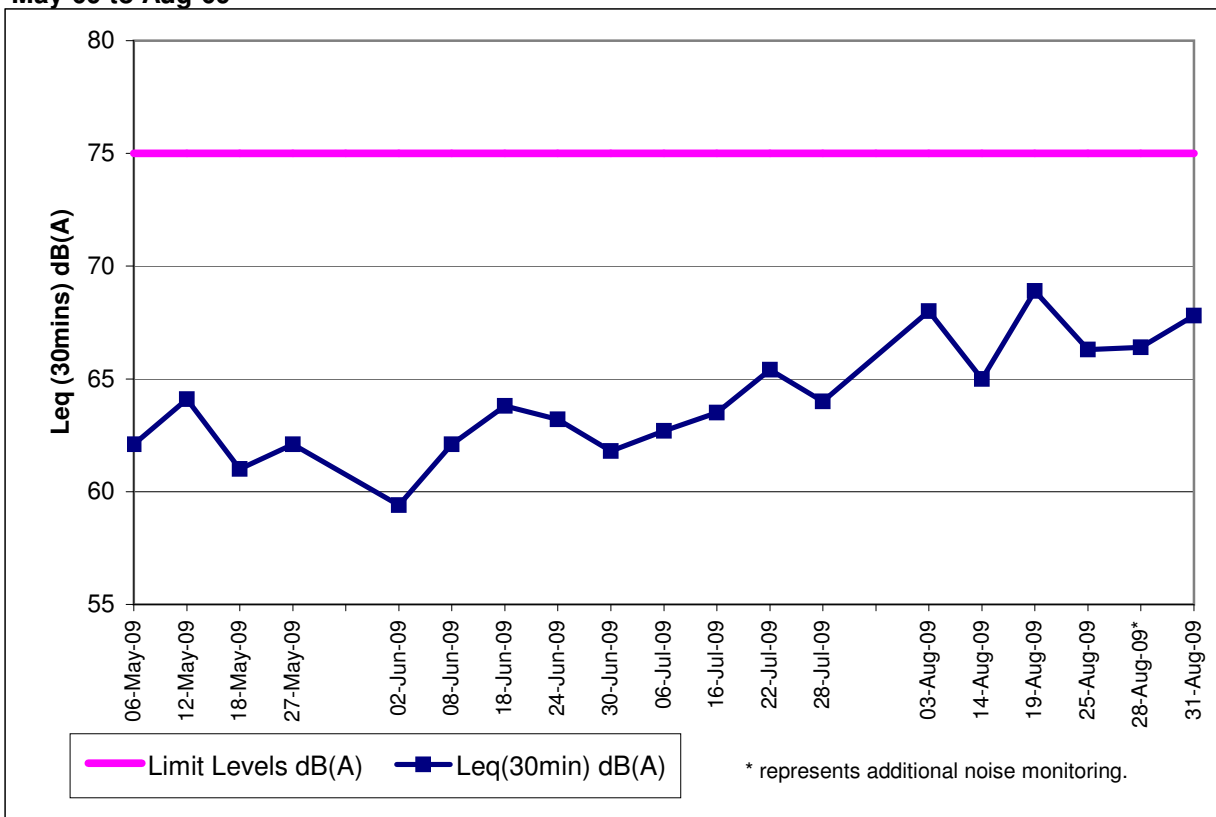
**Contract No. DC/2007/12 - Design and Construction of Tsuen Wan Drainage Tunnel
Noise Monitoring Results at Hong Hoi Chee Hong Temple (NSR 3)
May-09 to Aug-09**



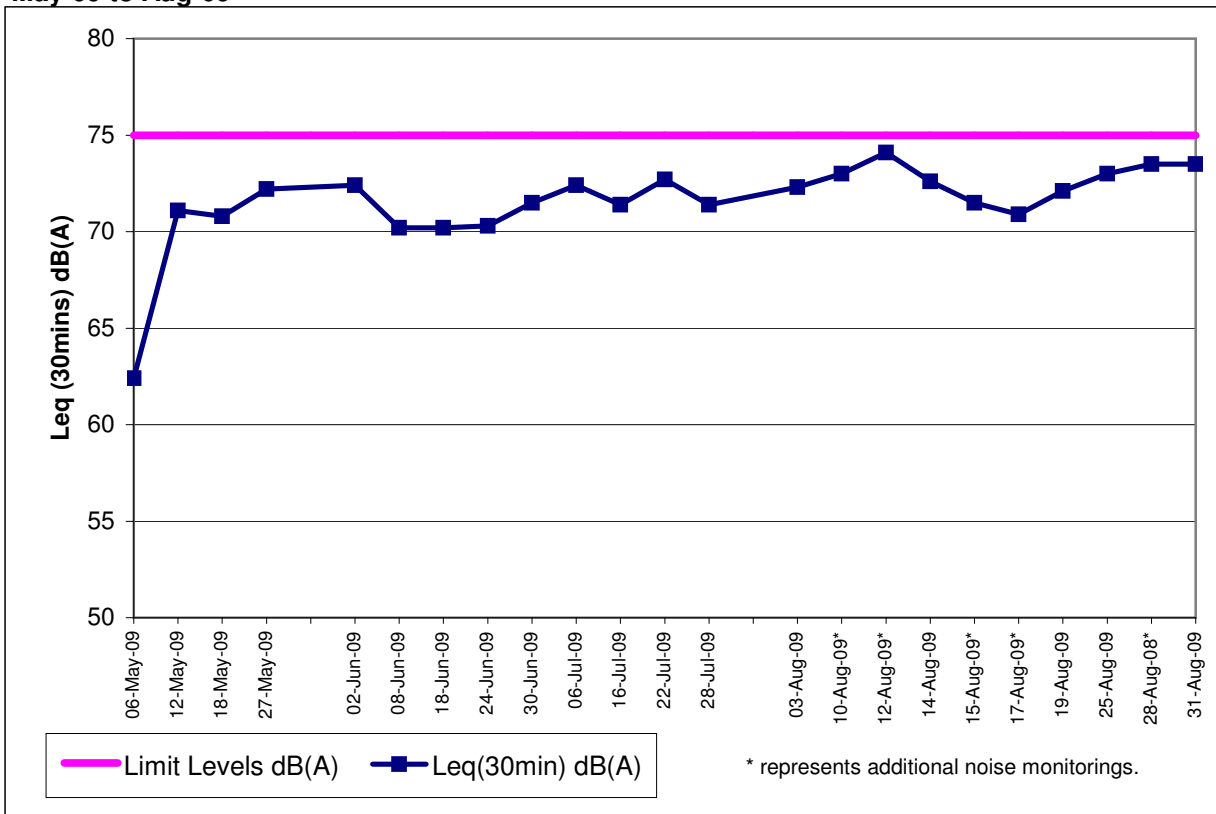
**Contract No. DC/2007/12 - Design and Construction of Tsuen Wan Drainage Tunnel
Noise Monitoring Results at Squatters (NSR 6)
May-09 to Aug-09**



**Contract No. DC/2007/12 - Design and Construction of Tsuen Wan Drainage Tunnel
Noise Monitoring Results at Long Beach Gardens (NSR 8)
May-09 to Aug-09**



**Contract No. DC/2007/12 - Design and Construction of Tsuen Wan Drainage Tunnel
 Noise Monitoring Results at Greenview Terrace (NSR 9)
 May-09 to Aug-09**

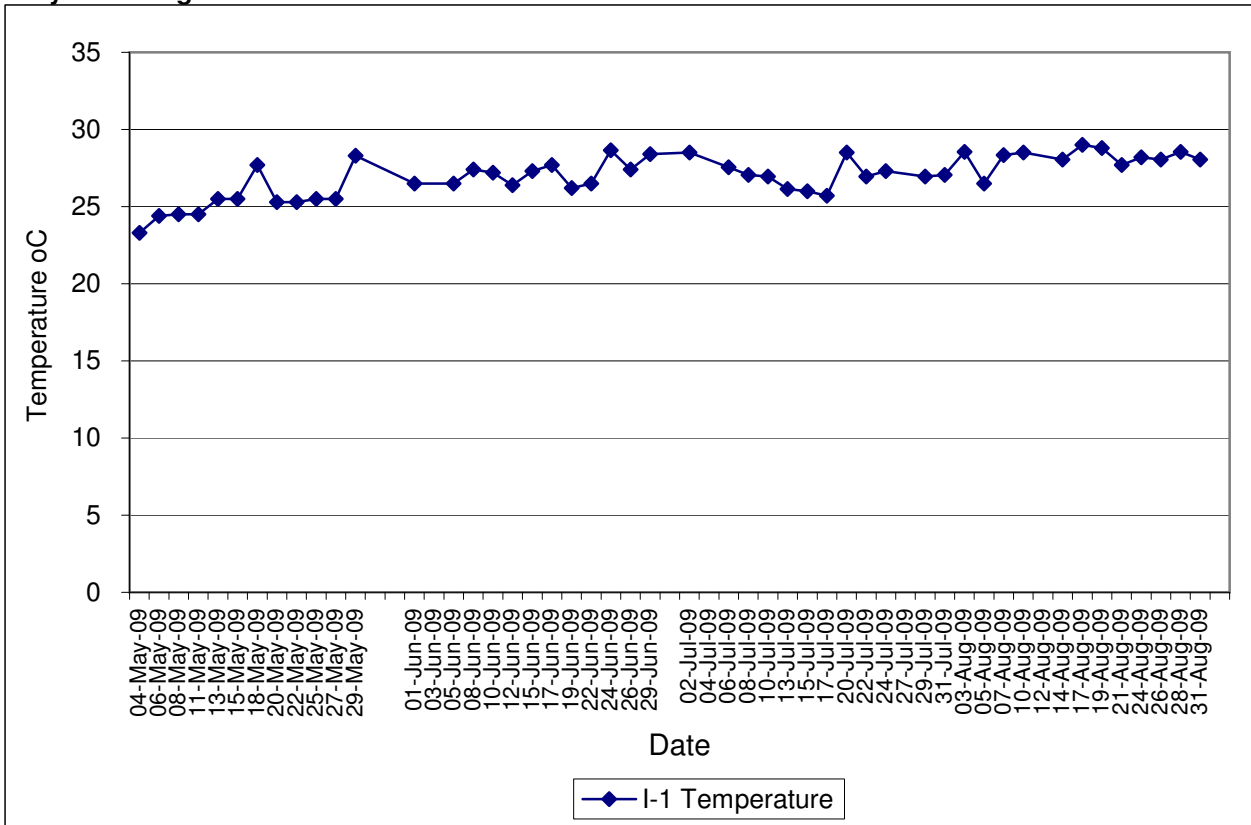


Contract No. DC/2007/12 - Design and Construction of Tsuen Wan Drainage Tunnel

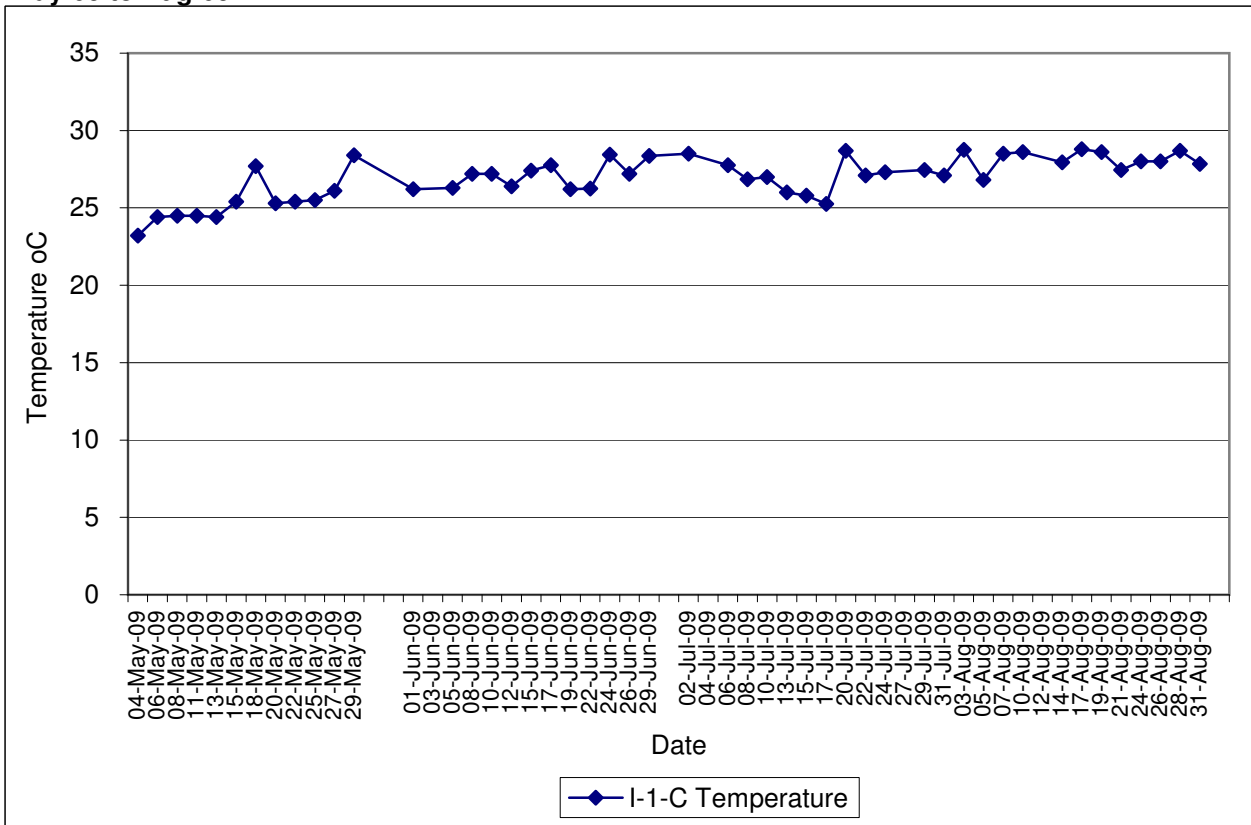
Water Quality Impact Monitoring Results

Monitoring Locations	Date	Start Time	Weather	Water Depth(m)	Temp			DO(mg/L)			Action/Limit Level of DO(mg/L)	pH			Turbidity(NTU)			Action/Limit Level of Tby	SS (mg/L)			Action/Limit Level of SS(mg/L)	Remarks:	Action to be taken
					1	2	Avg	1	2	Avg		1	2	Avg	1	2	Avg		1	2	Avg			
Sik Sik Yuen Ho Fung College I-1	03-Aug-09	13:48	Sunny	<1	28.50	28.60	28.55	5.60	5.65	5.63	7.40	7.41	7.41	2.95	2.92	2.94	2.0	2.0	2.0	Excavation by backhoe	Nil			
	05-Aug-09	10:45	Cloudy	<1	26.50	26.50	26.50	5.19	5.14	5.17	7.00	7.00	7.00	4.53	4.48	4.51	2.0	2.0	2.0	Excavation by backhoe	Nil			
	07-Aug-09	11:23	Fine	<1	28.30	28.40	28.35	5.99	6.04	6.02	7.03	7.03	7.03	3.60	3.55	3.58	2.0	2.0	2.0	Excavation by backhoe	Nil			
	10-Aug-09	09:37	Fine	<1	28.50	28.50	28.50	5.43	5.50	5.47	7.13	7.13	7.13	3.01	2.96	2.99	2.0	2.0	2.0	Excavation by backhoe	Nil			
	12-Aug-09	-	-	<1	-	-	-	-	-	-	-	-	-	-	-	-	-	-	-	Monitoring was cancelled due to thunderstorm warning.	Nil			
	14-Aug-09	09:45	Cloudy	<1	28.10	28.00	28.05	5.05	5.00	5.03	7.71	7.72	7.72	7.51	7.42	7.47	4.1	3.3	3.7	Excavation by backhoe	Exceedance was considered to be contributed by natural variation and no action was therefore required.			
	17-Aug-09	09:45	Fine	<1	29.00	29.00	29.00	6.04	6.07	6.06	7.07	7.07	7.07	2.52	2.43	2.48	2.0	2.0	2.0	Excavation by backhoe	Nil			
	19-Aug-09	09:58	Cloudy	<1	28.80	28.80	28.80	5.51	5.46	5.49	7.37	7.36	7.37	2.53	2.57	2.55	2.0	2.0	2.0	Nil	Nil			
	21-Aug-09	09:30	Sunny	<1	27.70	27.70	27.70	5.80	5.73	5.77	6.90	6.91	6.91	2.03	2.10	2.07	2.0	2.0	2.0	Nil	Nil			
	24-Aug-09	09:43	Sunny	<1	28.20	28.20	28.20	5.70	5.75	5.73	5.47	5.48	5.48	2.15	2.18	2.17	2.1	2.1	2.1	Nil	Nil			
	26-Aug-09	10:35	Fine	<1	28.10	28.00	28.05	5.18	5.16	5.17	6.90	6.90	6.90	2.97	3.06	3.02	2.6	2.2	2.4	Nil	Nil			
	28-Aug-09	10:55	Sunny	<1	28.50	28.60	28.55	4.73	4.80	4.77	7.45	7.42	7.44	2.70	2.77	2.74	3.9	2.8	3.35	Nil	Exceedance was considered to be contributed by natural variation and no action was therefore required.			
	31-Aug-09	08:55	Sunny	<1	28.00	28.10	28.05	5.32	5.40	5.36	7.45	7.44	7.45	2.60	2.67	2.64	2.1	2.1	2.1	Excavation work	Nil			
	Sik Sik Yuen Ho Fung College I-1-C	03-Aug-09	13:35	Sunny	<1	28.70	28.80	28.75	6.27	6.23	6.25	7.37	7.37	7.37	3.18	3.12	3.15	2.0	2.0	2.0	Nil	Nil		
05-Aug-09		10:32	Cloudy	<1	26.80	26.80	26.80	5.52	5.61	5.57	7.02	7.03	7.03	4.62	4.57	4.60	2.0	2.0	2.0	Nil	Nil			
07-Aug-09		11:00	Fine	<1	28.50	28.50	28.50	6.20	6.18	6.19	6.98	6.99	6.99	3.53	3.61	3.57	2.0	2.0	2.0	Nil	Nil			
10-Aug-09		09:26	Fine	<1	28.60	28.60	28.60	5.81	5.90	5.86	7.11	7.10	7.11	3.15	3.21	3.18	2.0	2.0	2.0	Nil	Nil			
12-Aug-09		-	-	<1	-	-	-	-	-	-	-	-	-	-	-	-	-	-	-	Monitoring was cancelled due to thunderstorm warning.	Nil			
14-Aug-09		09:30	Cloudy	<1	27.90	28.00	27.95	5.57	5.52	5.55	7.86	7.85	7.86	7.60	7.66	7.63	2.8	2.3	2.6	Nil	Nil			
17-Aug-09		09:33	Fine	<1	28.80	28.80	28.80	6.61	6.55	6.58	7.10	7.11	7.11	2.71	2.74	2.73	2.0	2.0	2.0	Nil	Nil			
19-Aug-09		09:45	Cloudy	<1	28.60	28.60	28.60	5.03	5.10	5.07	7.40	7.40	7.40	2.06	2.66	2.36	2.0	2.0	2.0	Nil	Nil			
21-Aug-09		09:18	Sunny	<1	27.50	27.40	27.45	5.82	5.88	5.85	7.00	6.99	7.00	2.25	2.28	2.27	2.0	2.0	2.0	Nil	Nil			
24-Aug-09		09:30	Sunny	<1	28.00	28.00	28.00	5.22	5.27	5.25	5.45	5.46	5.46	2.23	2.27	2.25	2.5	2.3	2.4	Nil	Nil			
26-Aug-09		10:25	Fine	<1	28.00	28.00	28.00	5.45	5.37	5.41	6.93	6.93	6.93	3.12	3.21	3.17	2.3	2.4	2.4	Nil	Nil			
28-Aug-09		10:38	Sunny	<1	28.70	28.70	28.70	4.19	4.24	4.22	7.43	7.44	7.44	3.05	2.95	3.00	2.0	3.2	2.6	Nil	Nil			
31-Aug-09		08:45	Sunny	<1	27.80	27.90	27.85	5.23	5.30	5.27	7.40	7.41	7.41	2.74	2.82	2.78	2.1	2.4	2.3	Nil	Nil			
Hong Hoi Chee Hong Temple I-2		03-Aug-09	09:45	Sunny	<1	28.80	28.80	28.80	5.43	5.49	5.46	7.56	7.56	7.56	2.61	2.57	2.59	2.0	2.0	2.0	Excavation by backhoe	Nil		
	05-Aug-09	10:15	Cloudy	<1	26.30	26.40	26.35	5.14	5.00	5.07	7.07	7.07	7.07	2.95	2.99	2.97	2.0	2.0	2.0	Excavation by backhoe	Nil			
	07-Aug-09	09:45	Fine	<1	28.80	28.80	28.80	5.74	5.70	5.72	7.06	7.06	7.06	2.05	2.09	2.07	2.0	2.0	2.0	Excavation by backhoe	Nil			
	10-Aug-09	09:10	Fine	<1	28.00	28.00	28.00	5.77	5.68	5.73	7.19	7.19	7.19	2.31	2.42	2.37	2.0	2.0	2.0	Excavation by backhoe	Nil			
	12-Aug-09	-	-	<1	-	-	-	-	-	-	-	-	-	-	-	-	-	-	-	Monitoring was cancelled due to thunderstorm warning.	Nil			
	14-Aug-09	11:25	Cloudy	<1	27.50	27.50	27.50	5.22	5.15	5.19	7.40	7.40	7.40	4.78	4.86	4.82	3.4	3.1	3.3	Drilling work	Exceedance was considered to be contributed by natural variation and no action was therefore required.			
	17-Aug-09	09:16	Fine	<1	28.50	28.50	28.50	5.54	5.59	5.57	7.41	7.41	7.41	2.07	2.02	2.05	2.0	2.0	2.0	Nil	Nil			
	19-Aug-09	10:16	Cloudy	<1	28.60	28.60	28.60	5.15	5.20	5.18	7.18	7.19	7.19	2.57	2.62	2.60	2.0	2.0	2.0	Nil	Nil			
	21-Aug-09	09:05	Sunny	<1	27.50	27.60	27.55	5.04	5.09	5.07	6.07	6.07	6.07	2.11	2.12	2.12	2.0	2.0	2.0	Nil	Nil			
	24-Aug-09	09:12	Sunny	<1	28.00	28.00	28.00	4.77	4.83	4.80	5.60	5.60	5.60	2.22	2.27	2.25	2.0	2.0	2.0	Nil	Nil			
	26-Aug-09	10:05	Fine	<1	27.80	27.80	27.80	4.82	4.88	4.85	7.30	7.31	7.31	2.67	2.62	2.65	2.0	2.0	2.0	Nil	Nil			
	28-Aug-09	10:15	Sunny	<1	28.00	28.00	28.00	4.76	4.80	4.78	7.52	7.52	7.52	2.07	2.11	2.09	2.1	2.2	2.2	Nil	Nil			
	31-Aug-09	09:45	Sunny	<1	28.00	28.00	28.00	4.51	4.56	4.54	7.38	7.37	7.38	1.07	1.01	1.04	2.0	2.0	2.0	Drilling work, breaking by backhoe	Nil			
	Hong Hoi Chee Hong Temple I-2-C	03-Aug-09	09:35	Sunny	<1	28.40	28.40	28.40	6.42	6.46	6.44	7.55	7.54	7.55	2.44	2.48	2.46	2.0	2.0	2.0	Nil	Nil		
05-Aug-09		10:05	Cloudy	<1	26.30	26.30	26.30	5.22	5.18	5.20	7.12	7.11	7.12	3.02	3.10	3.06	2.0	2.0	2.0	Nil	Nil			
07-Aug-09		09:35	Fine	<1	28.10	28.10	28.10	5.77	5.70	5.74	7.04	7.03	7.04	2.12	2.23	2.18	2.0	2.0	2.0	Excavation by backhoe	Nil			
10-Aug-09		09:00	Fine	<1	27.70	27.80	27.75	5.22	5.27	5.25	7.23	7.22	7.23	2.50	2.45	2.48	2.0	2.0	2.0	Excavation by backhoe	Nil			
12-Aug-09		-	-	<1	-	-	-	-	-	-	-	-	-	-	-	-	-	-	-	Monitoring was cancelled due to thunderstorm warning.	Nil			
14-Aug-09		11:15	Cloudy	<1	27.60	27.60	27.60	5.24	5.30	5.27	7.43	7.42	7.43	5.05	5.13	5.09	2.3	2.3	2.3	Nil	Nil			
17-Aug-09		09:05	Fine	<1	28.10	28.10	28.10	6.16	6.08	6.12	7.37	7.38	7.38	2.11	2.17	2.14	2.0	2.0	2.0	Nil	Nil			
19-Aug-09		10:10	Cloudy	<1	28.40	28.40	28.40	4.86	4.81	4.84	7.22	7.21	7.22	2.53	2.50	2.52	2.0	2.0	2.0	Nil	Nil			
21-Aug-09		08:55	Sunny	<1	27.00	27.00	27.00	5.56	5.62	5.59	6.00	6.00	6.00	2.03	2.07	2.05	2.0	2.0	2.0	Nil	Nil			
24-Aug-09		09:00	Sunny	<1	27.90	27.90	27.90	4.98	5.05	5.02	5.51	5.51	5.51	2.40	2.35	2.38	2.0	2.0	2.0	Nil	Nil			
26-Aug-09		09:50	Fine	<1	27.60	27.70	27.65	5.53	5.61	5.57	7.31	7.30	7.31	2.71	2.80	2.76	2.0	2.0	2.0	Nil	Nil			
28-Aug-09		10:05	Sunny	<1	28.00	28.00	28.00	4.69	4.61	4.65	7.52	7.55	7.54	2.22	2.27	2.25	2.0	2.0	2.0	Nil	Nil			
31-Aug-09		09:35	Sunny	<1	27.70	27.70	27.70	4.70	4.65	4.68	7.40	7.40	7.40	1.12	1.18	1.15	2.0	2.0	2.0	Nil	Nil			
Squatters I-3		03-Aug-09	16:45	Sunny	<1	28.20	28.20	28.20	6.03	5.98	6.01	7.32	7.32	7.32	2.37	2.41	2.39	2.0	2.0	2.0	Nil	Nil		
	05-Aug-09	11:10	Cloudy	<1	26.10	26.10	26.10	5.33	5.29	5.31	7.08	7.07	7.08	3.82	3.86	3.84	2.0	2.0	2.0	Nil	Nil			
	07-Aug-09	14:10	Fine	<1	28.40	28.30	28.35	5.98	5.91	5.95	7.20	7.21	7.21	3.14	3.10	3.12	2.0	2.0	2.0	Excavation by backhoe	Nil			
	10-Aug-09	10:17	Fine	<1	28.40	28.50	28.45	5.14	5.06	5.10	7.05	7.06	7.06	2.50	2.53	2.52	2.0	2.0	2.0	Excavation by backhoe	Nil			
	12-Aug-09	-	-	<1	-	-	-	-	-	-	-	-	-	-	-	-	-	-	-	Monitoring was cancelled due to thunderstorm warning.	Nil			
	14-Aug																							

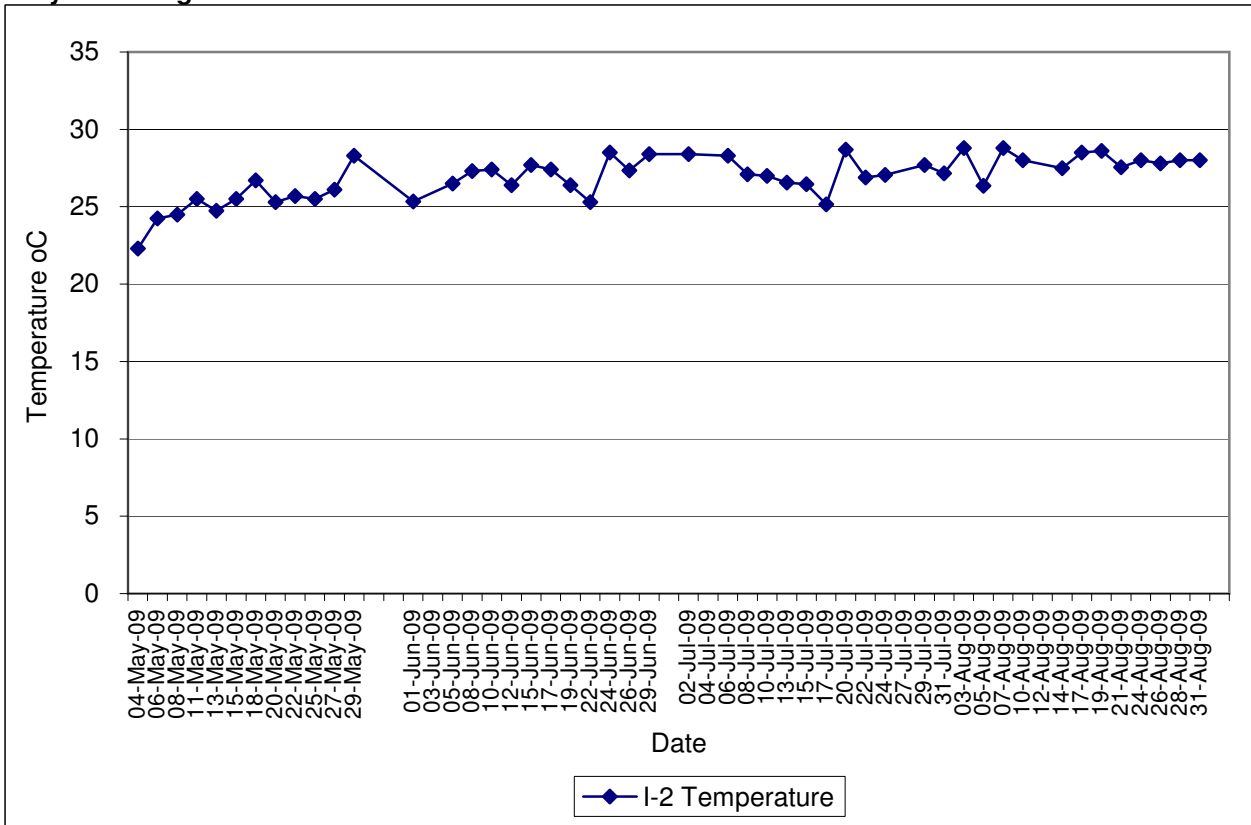
**Contract No. DC/2007/12 - Design and Construction of Tsuen Wan Drainage Tunnel
 Water Quality Results at Sik Sik Yuen Ho Fung College (I-1)
 May-09 to Aug-09**



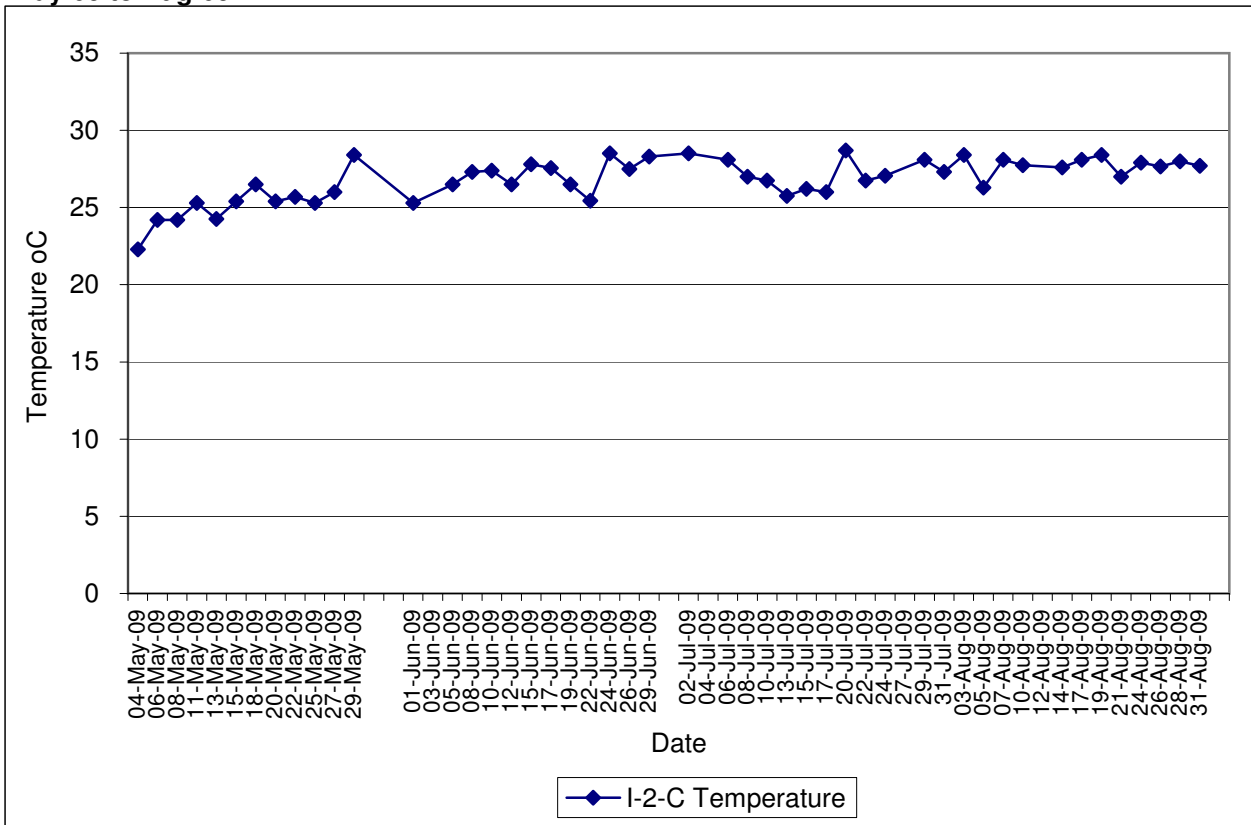
**Contract No. DC/2007/12 - Design and Construction of Tsuen Wan Drainage Tunnel
 Water Quality Results at Sik Sik Yuen Ho Fung College (I-1-C)
 May-09 to Aug-09**



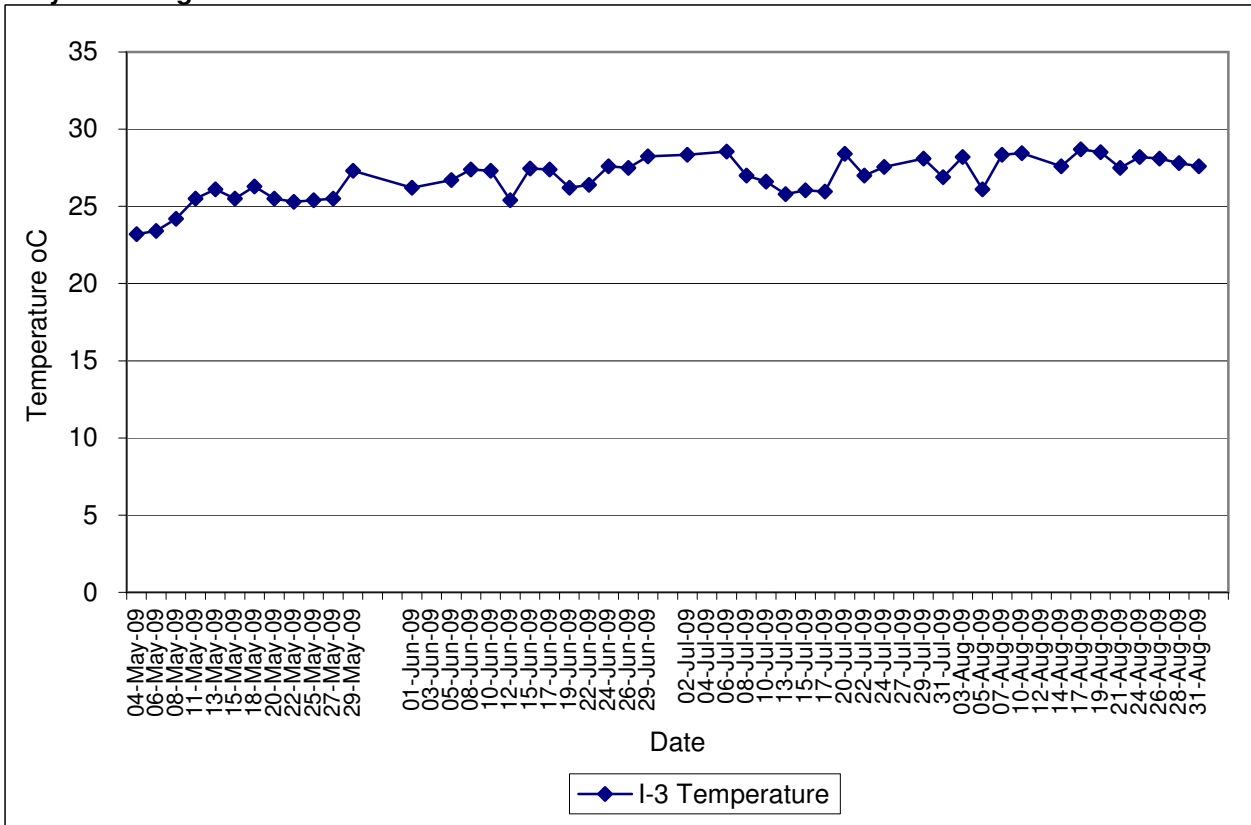
Contract No. DC/2007/12 - Design and Construction of Tsuen Wan Drainage Tunnel
Water Quality Results at Hong Hoi Chee Hong Temple (I-2)
May-09 to Aug-09



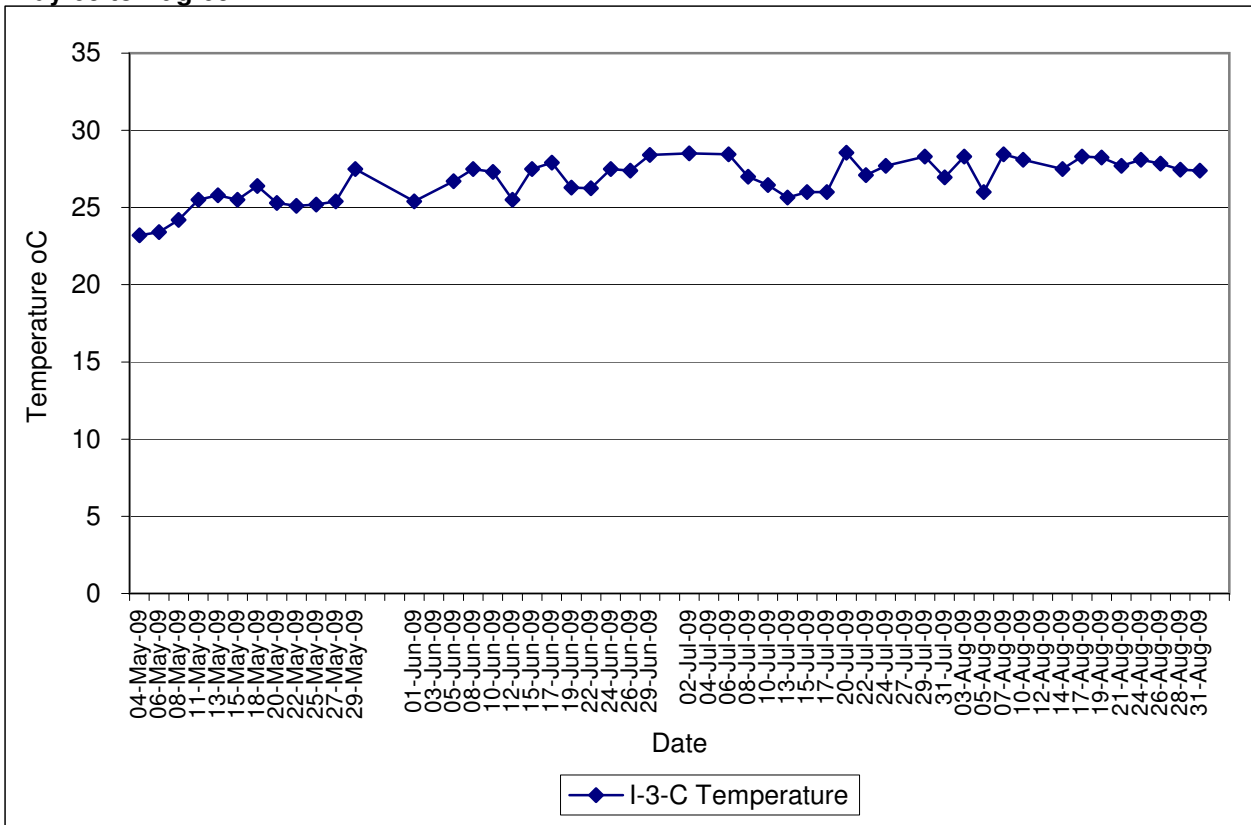
Contract No. DC/2007/12 - Design and Construction of Tsuen Wan Drainage Tunnel
Water Quality Results at Hong Hoi Chee Hong Temple (I-2-C)
May-09 to Aug-09



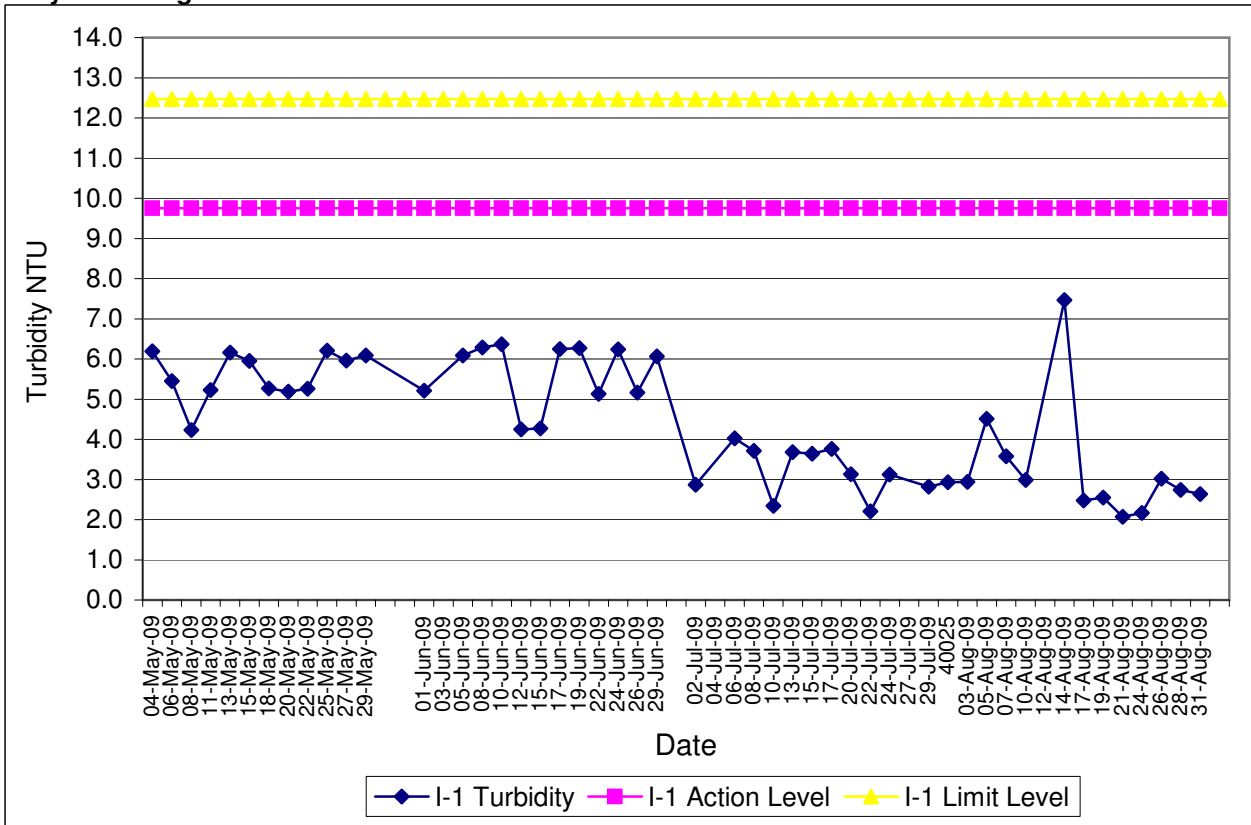
Contract No. DC/2007/12 - Design and Construction of Tsuen Wan Drainage Tunnel
Water Quality Results at Squatters (I-3)
May-09 to Aug-09



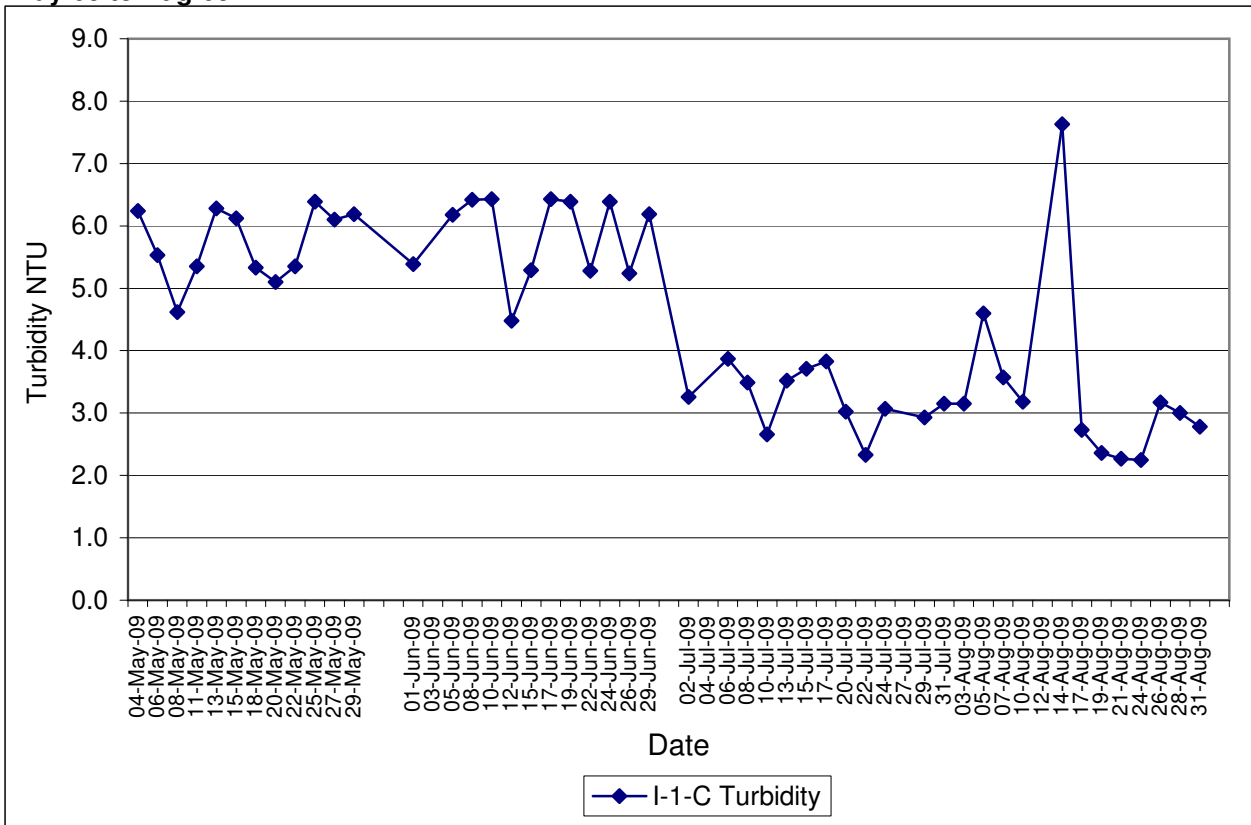
Contract No. DC/2007/12 - Design and Construction of Tsuen Wan Drainage Tunnel
Water Quality Results at Squatters (I-3-C)
May-09 to Aug-09



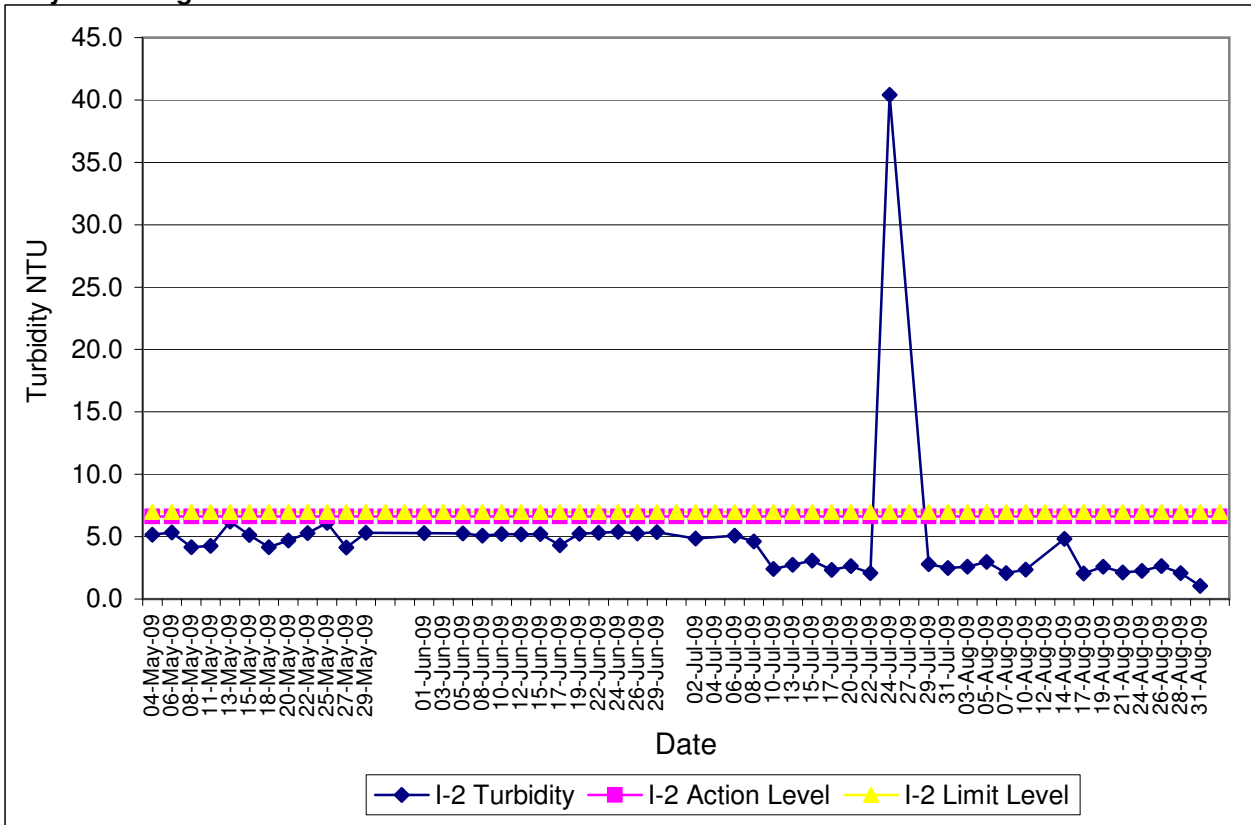
**Contract No. DC/2007/12 - Design and Construction of Tsuen Wan Drainage Tunnel
 Water Quality Results at Sik Sik Yuen Ho Fung College (I-1)
 May-09 to Aug-09**



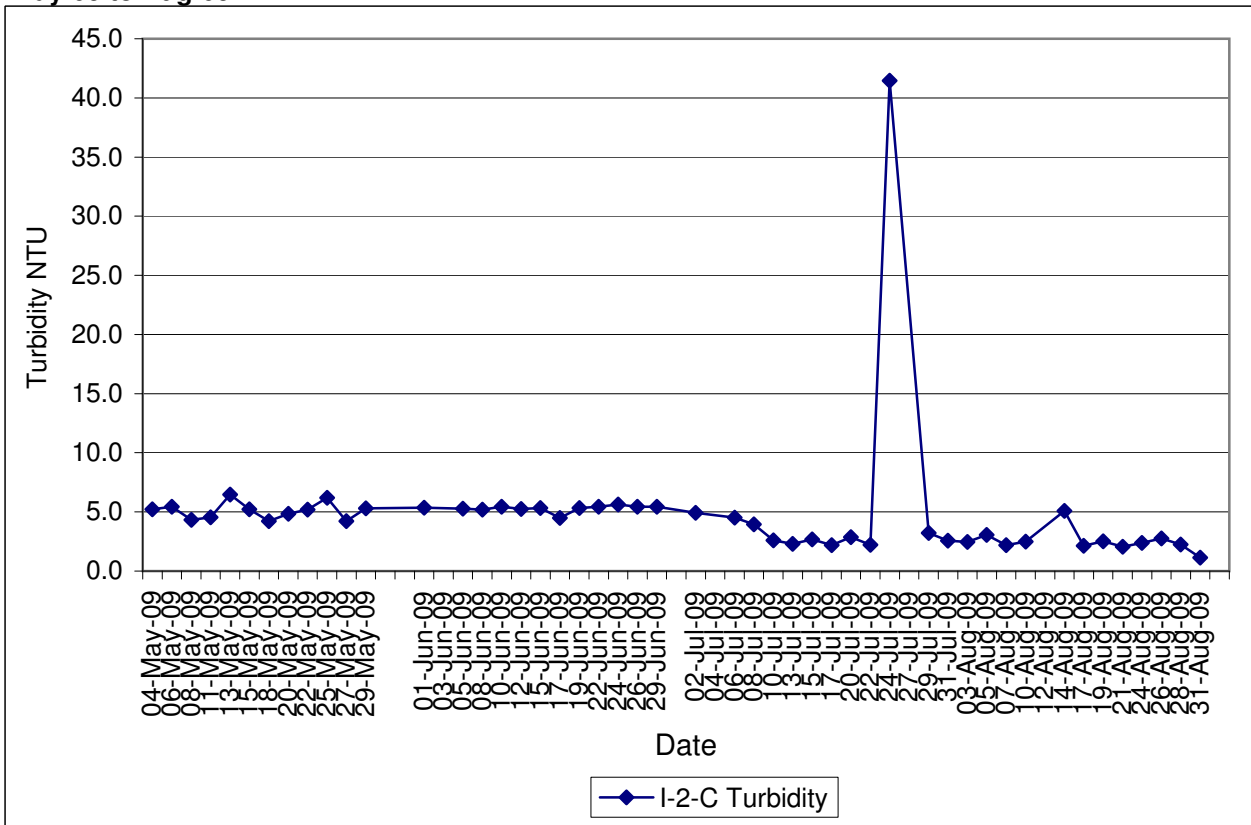
**Contract No. DC/2007/12 - Design and Construction of Tsuen Wan Drainage Tunnel
 Water Quality Results at Sik Sik Yuen Ho Fung College (I-1-C)
 May-09 to Aug-09**



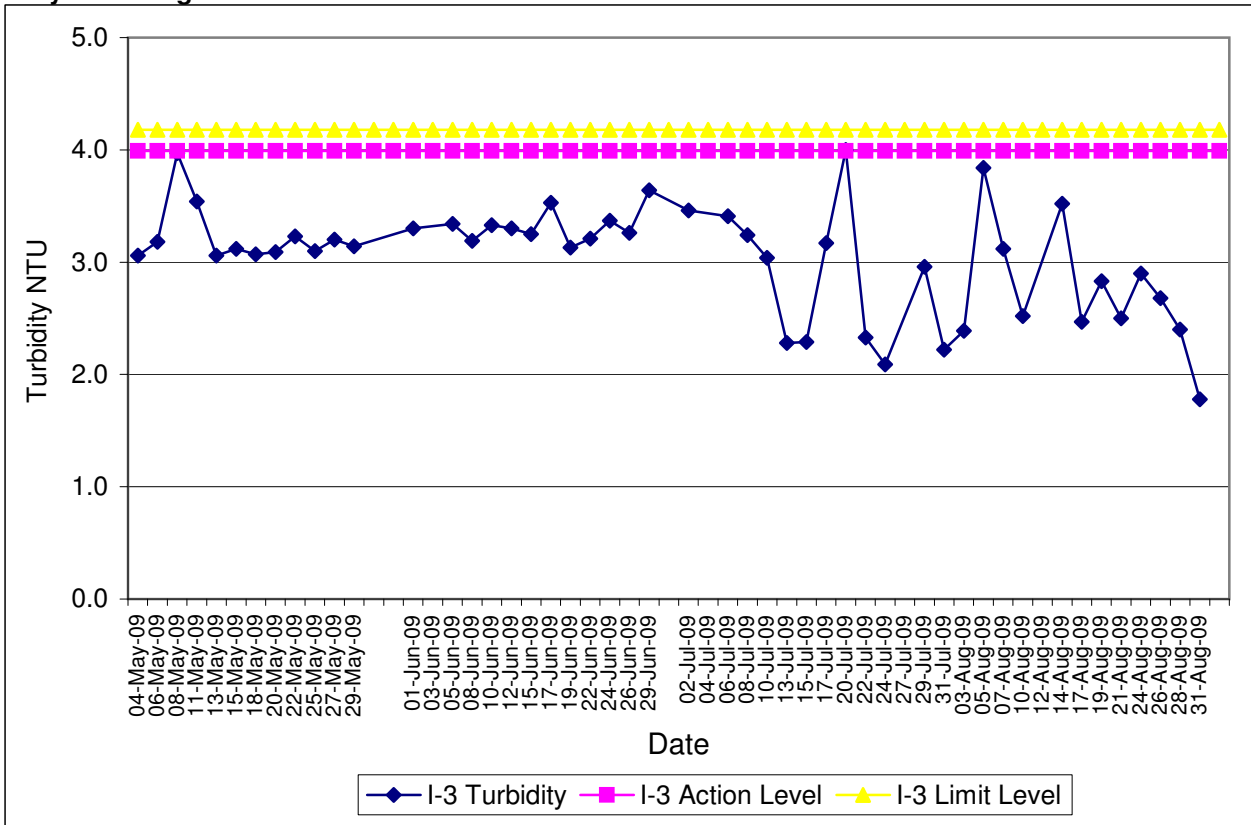
**Contract No. DC/2007/12 - Design and Construction of Tsuen Wan Drainage Tunnel
 Water Quality Results at Hong Hoi Chee Hong Temple (I-2)
 May-09 to Aug-09**



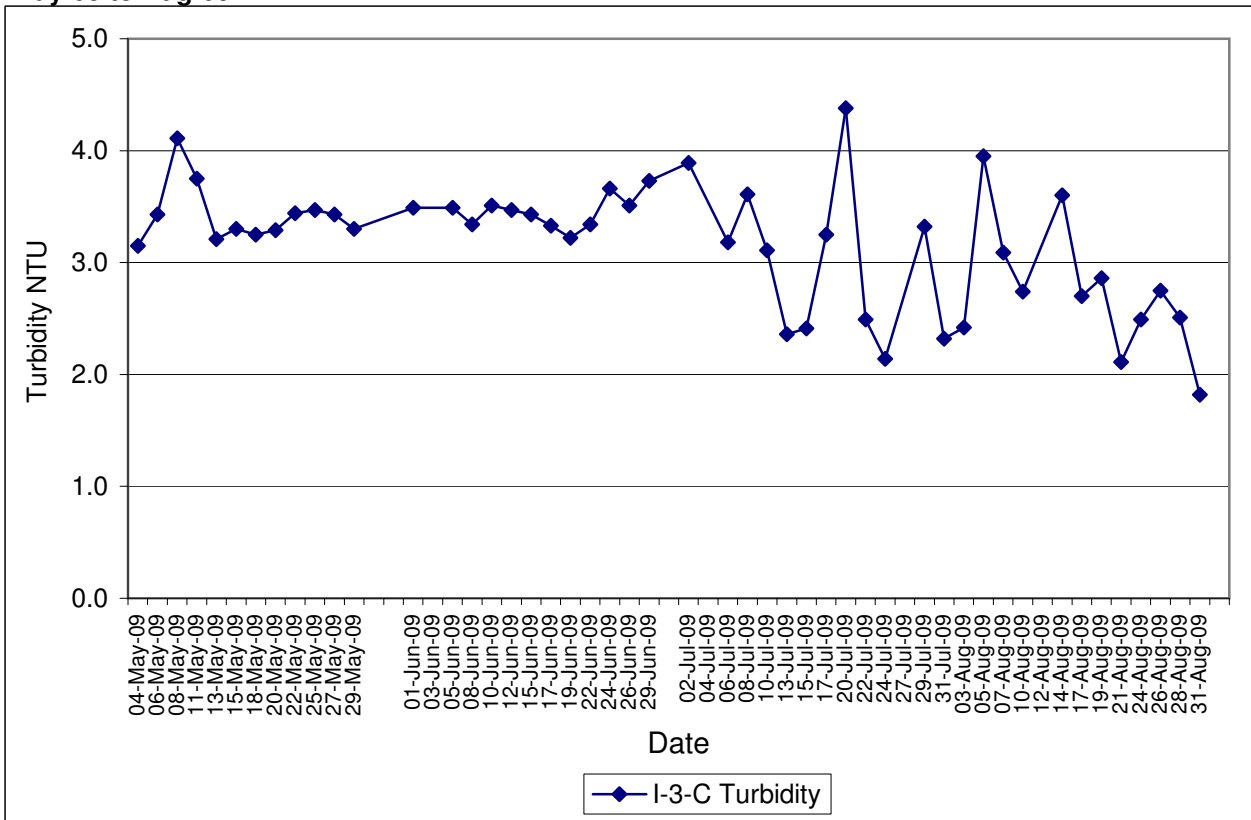
**Contract No. DC/2007/12 - Design and Construction of Tsuen Wan Drainage Tunnel
 Water Quality Results at Hong Hoi Chee Hong Temple (I-2-C)
 May-09 to Aug-09**



Contract No. DC/2007/12 - Design and Construction of Tsuen Wan Drainage Tunnel
Water Quality Results at Squatters (I-3)
May-09 to Aug-09

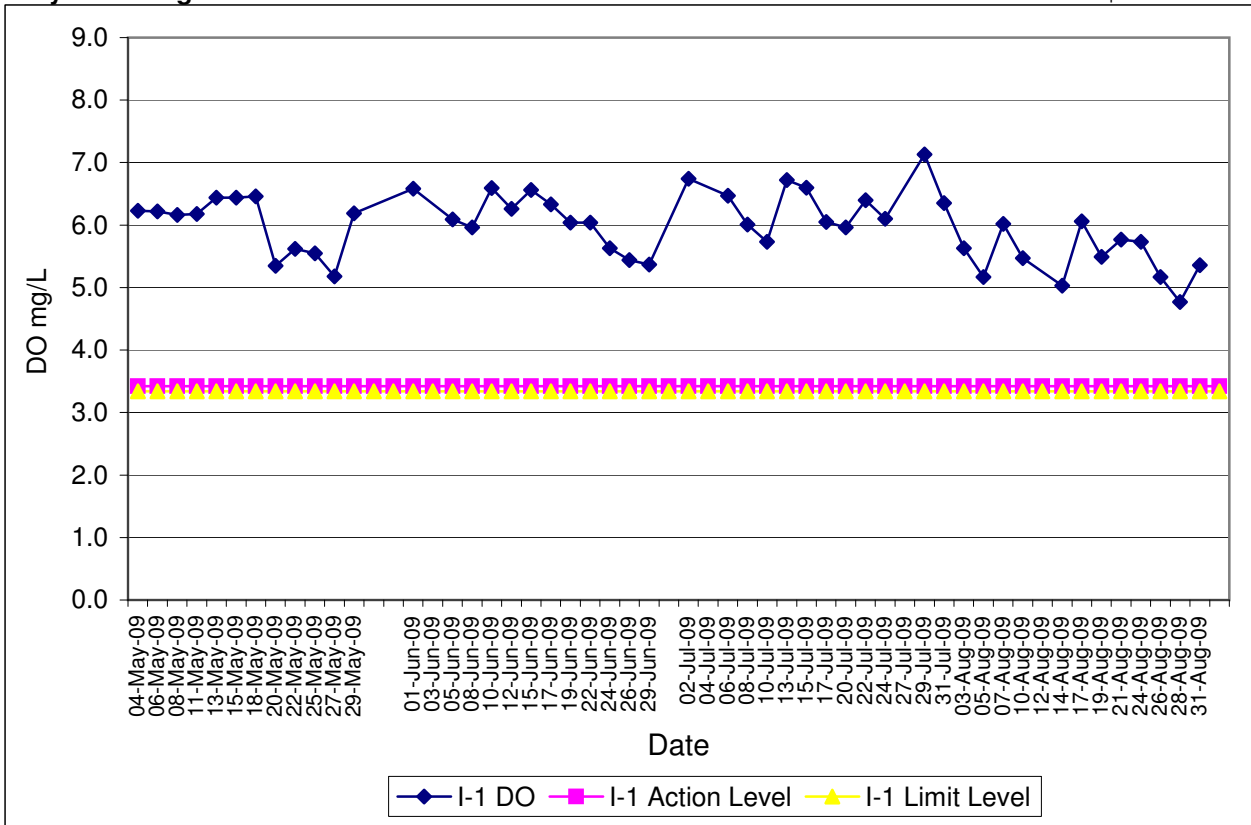


Contract No. DC/2007/12 - Design and Construction of Tsuen Wan Drainage Tunnel
Water Quality Results at Squatters (I-3-C)
May-09 to Aug-09

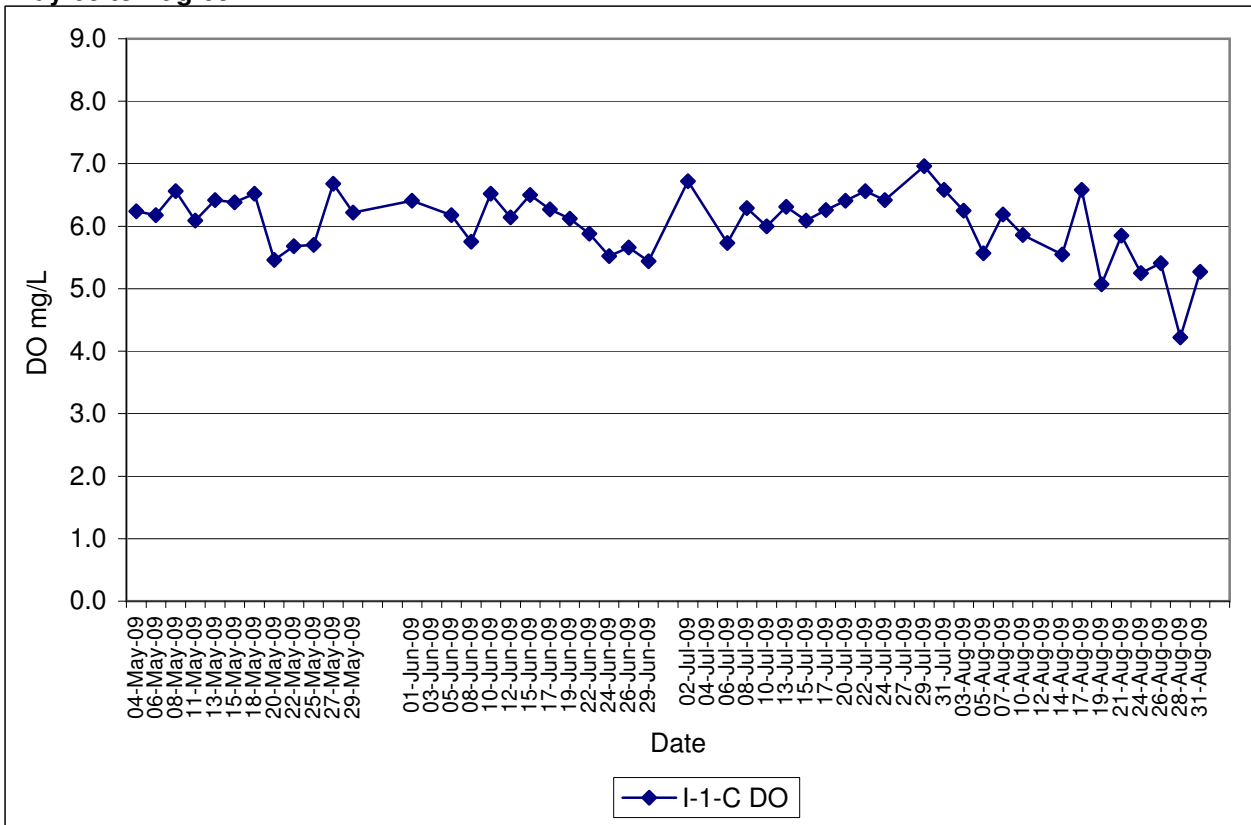


Contract No. DC/2007/12 - Design and Construction of Tsuen Wan Drainage Tunnel
Water Quality Results at Sik Sik Yuen Ho Fung College (I-1)
May-09 to Aug-09

Note: Exceedances of Action / Limit Levels occur when the levels of DO are below the respective limit levels.

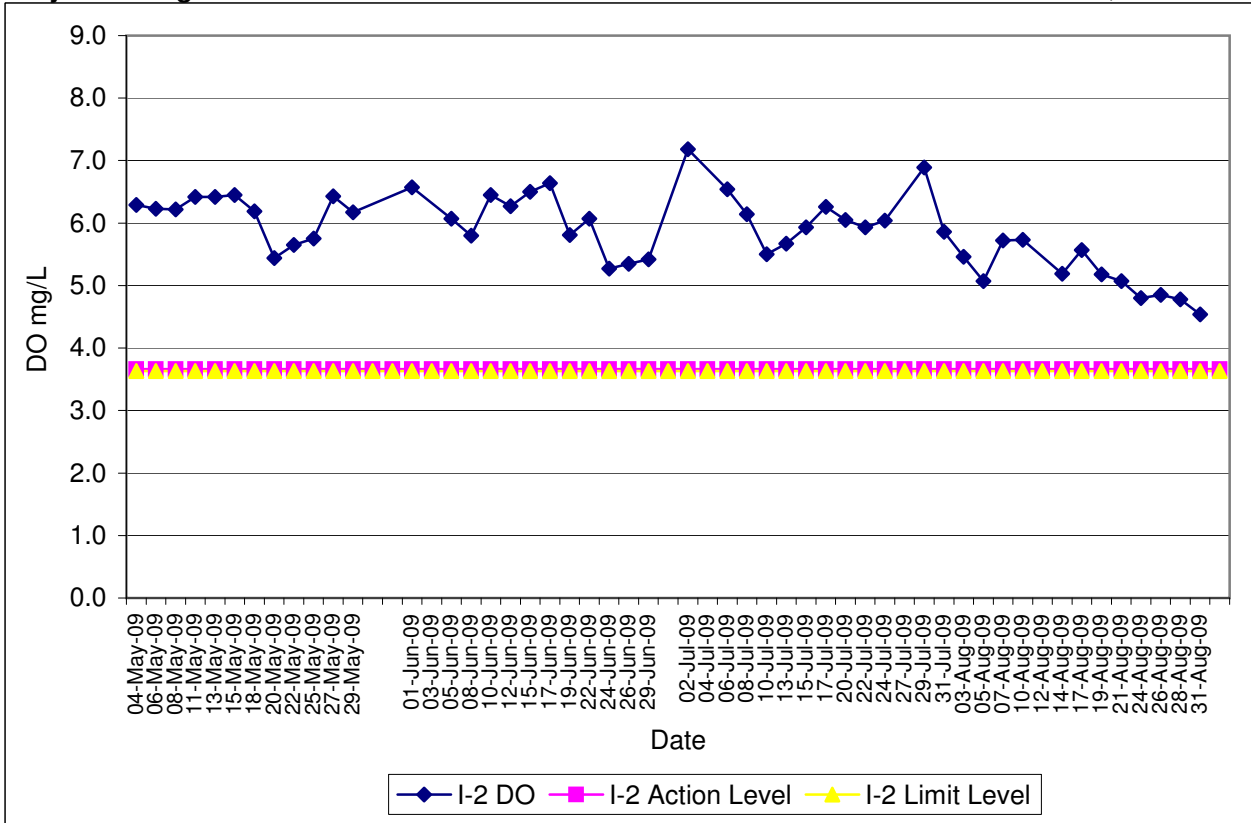


Contract No. DC/2007/12 - Design and Construction of Tsuen Wan Drainage Tunnel
Water Quality Results at Sik Sik Yuen Ho Fung College (I-1-C)
May-09 to Aug-09

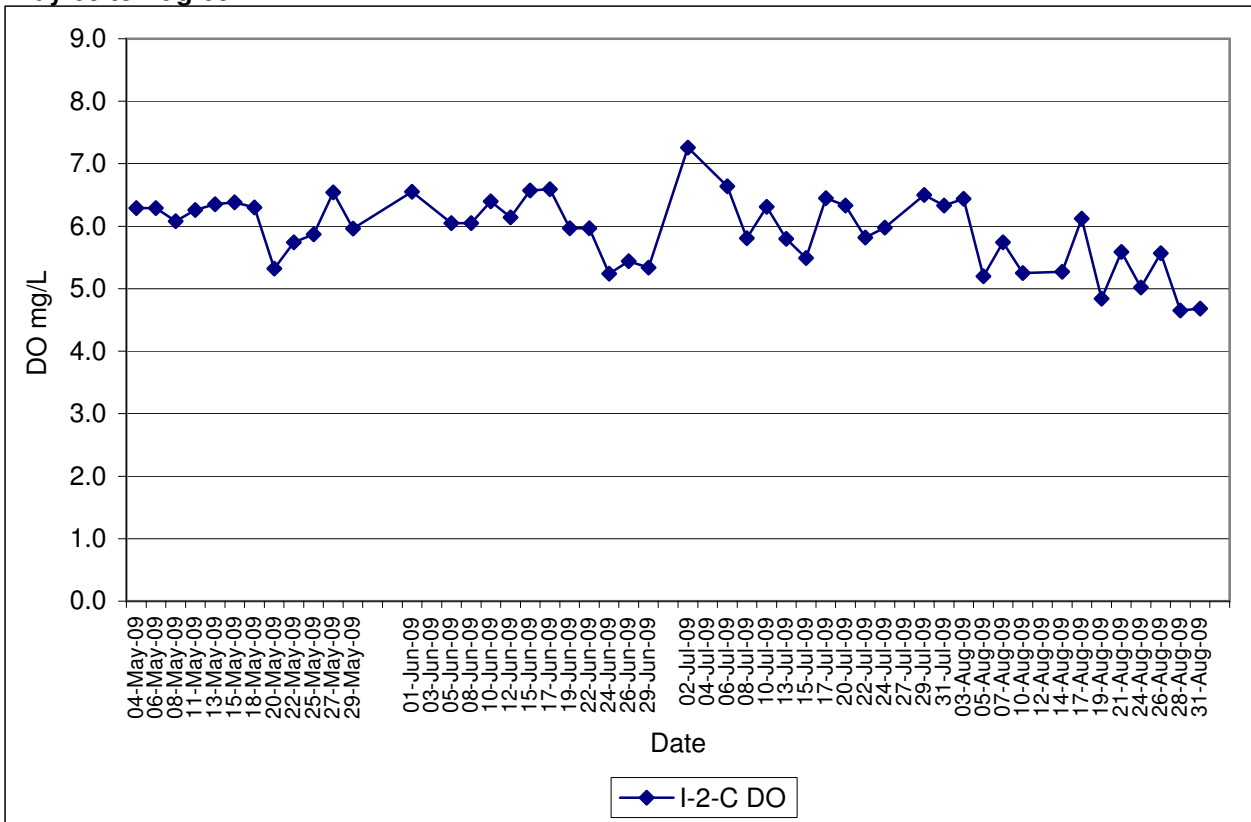


Contract No. DC/2007/12 - Design and Construction of Tsuen Wan Drainage Tunnel
Water Quality Results at Hong Hoi Chee Hong Temple (I-2)
May-09 to Aug-09

Note: Exceedances of Action / Limit Levels occur when the levels of DO are below the respective limit levels.

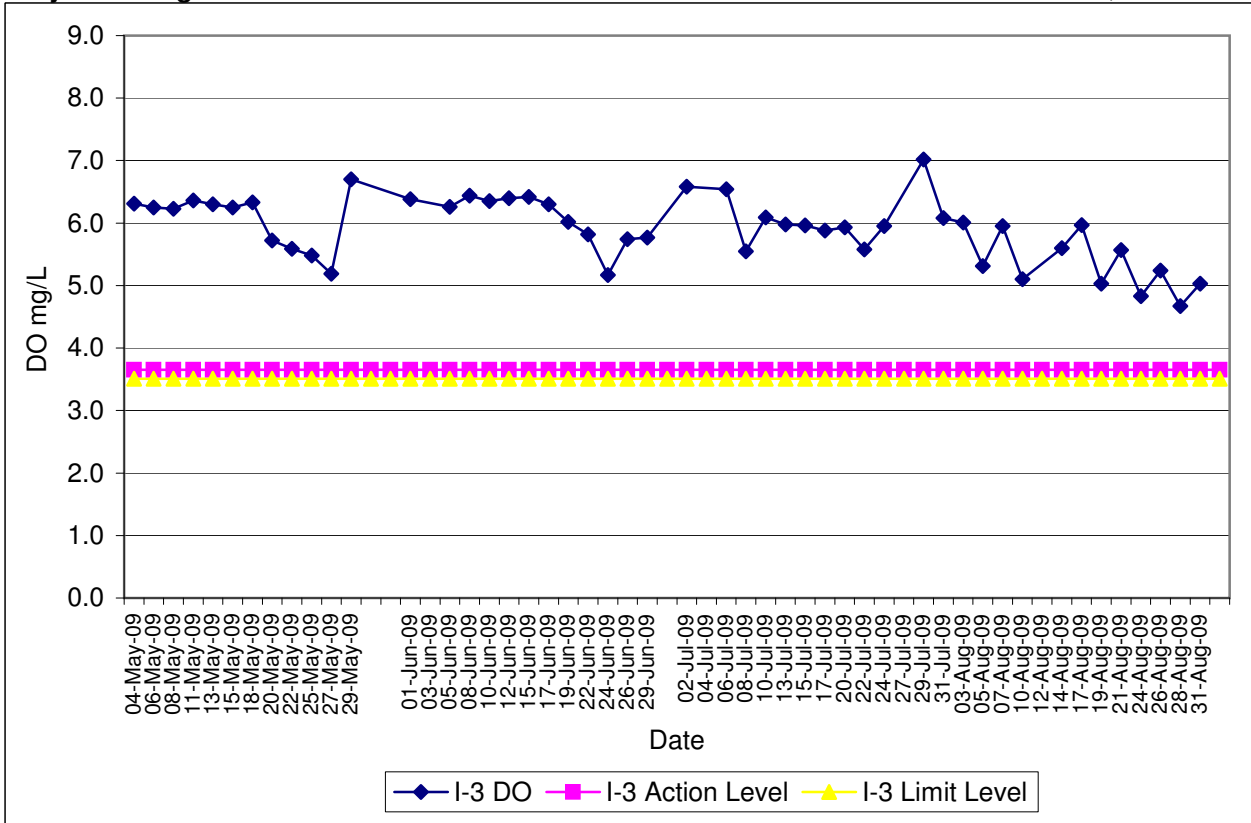


Contract No. DC/2007/12 - Design and Construction of Tsuen Wan Drainage Tunnel
Water Quality Results at Hong Hoi Chee Hong Temple (I-2-C)
May-09 to Aug-09

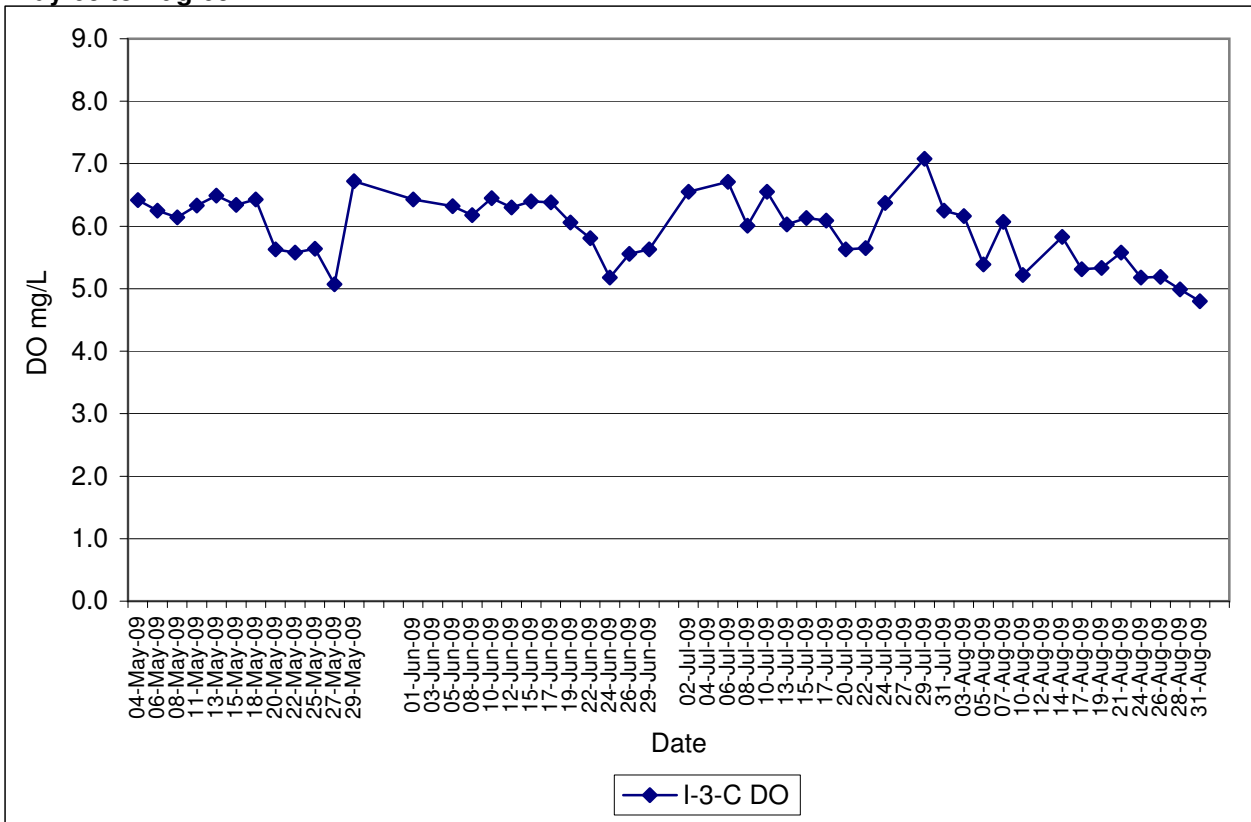


Contract No. DC/2007/12 - Design and Construction of Tsuen Wan Drainage Tunnel
Water Quality Results at Squatters (I-3)
May-09 to Aug-09

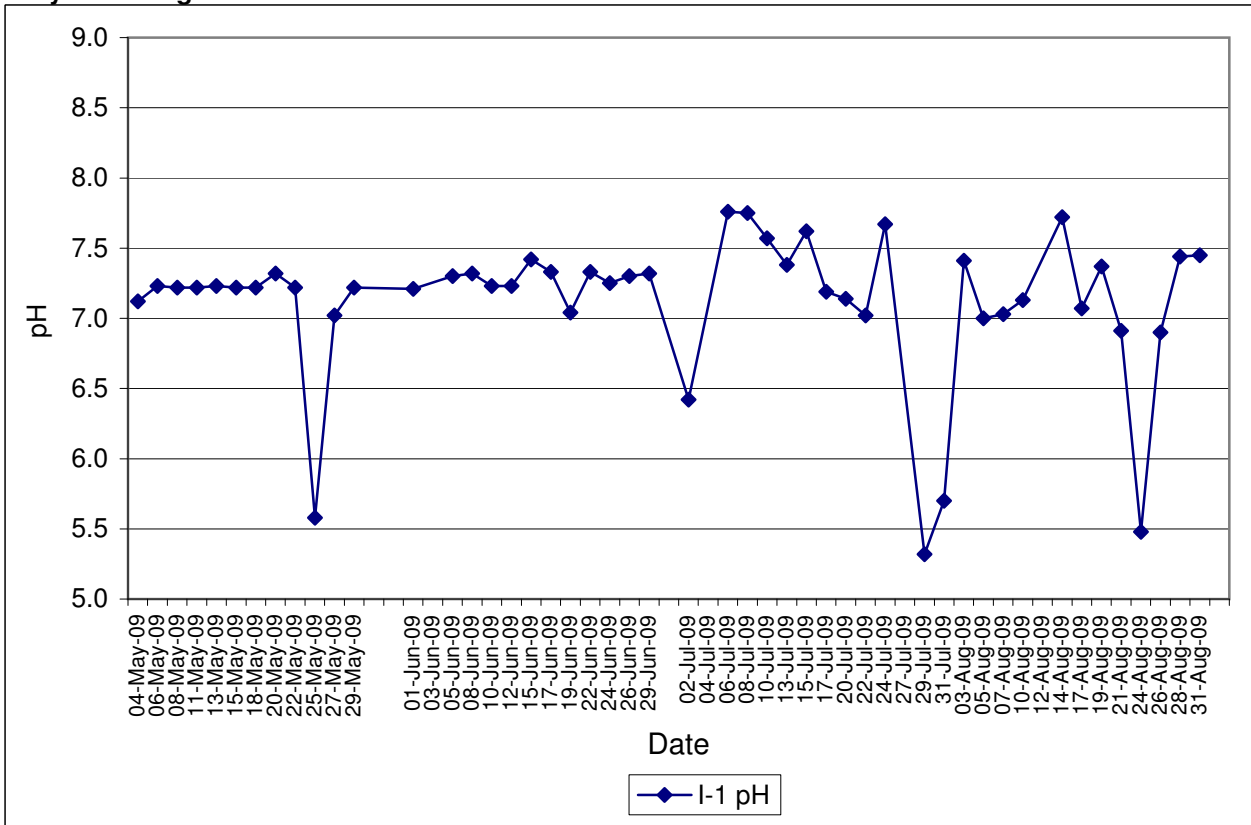
Note: Exceedances of Action / Limit Levels occur when the levels of DO are below the respective limit levels.



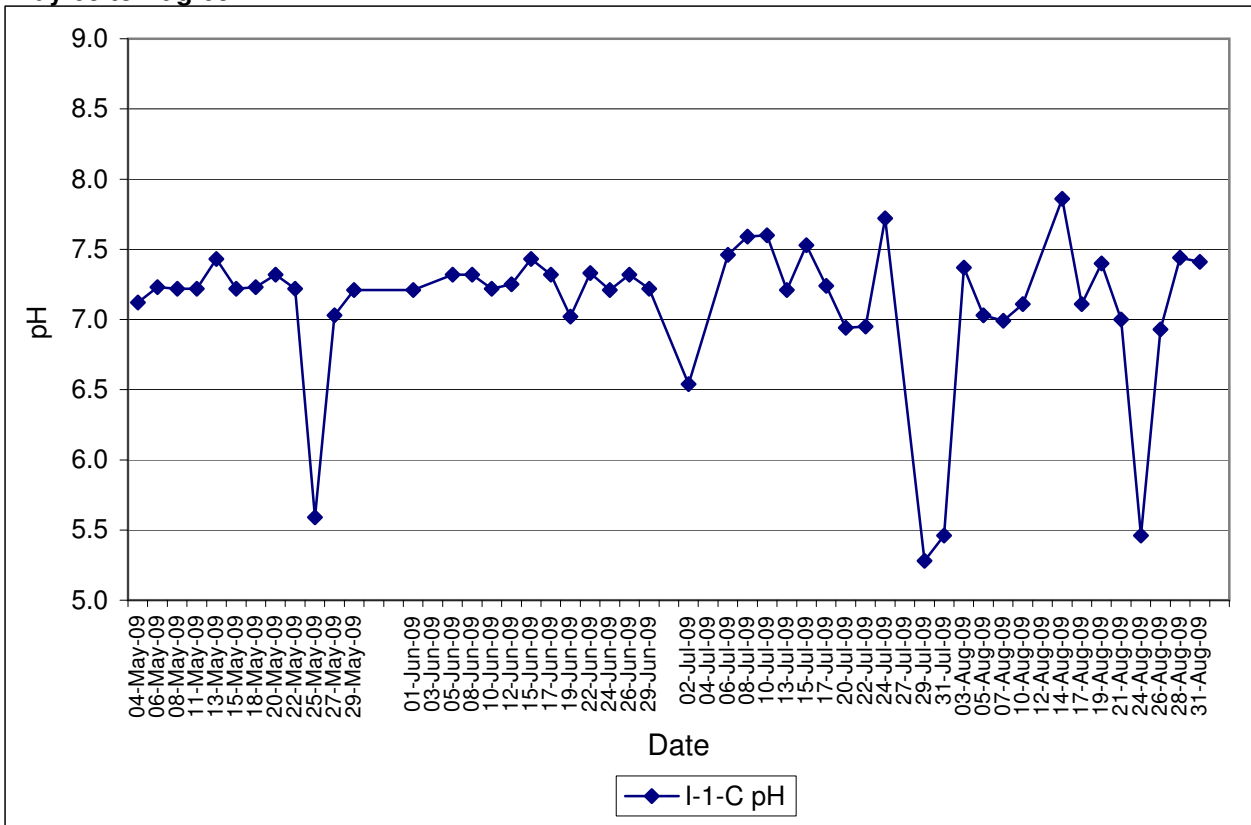
Contract No. DC/2007/12 - Design and Construction of Tsuen Wan Drainage Tunnel
Water Quality Results at Squatters (I-3-C)
May-09 to Aug-09



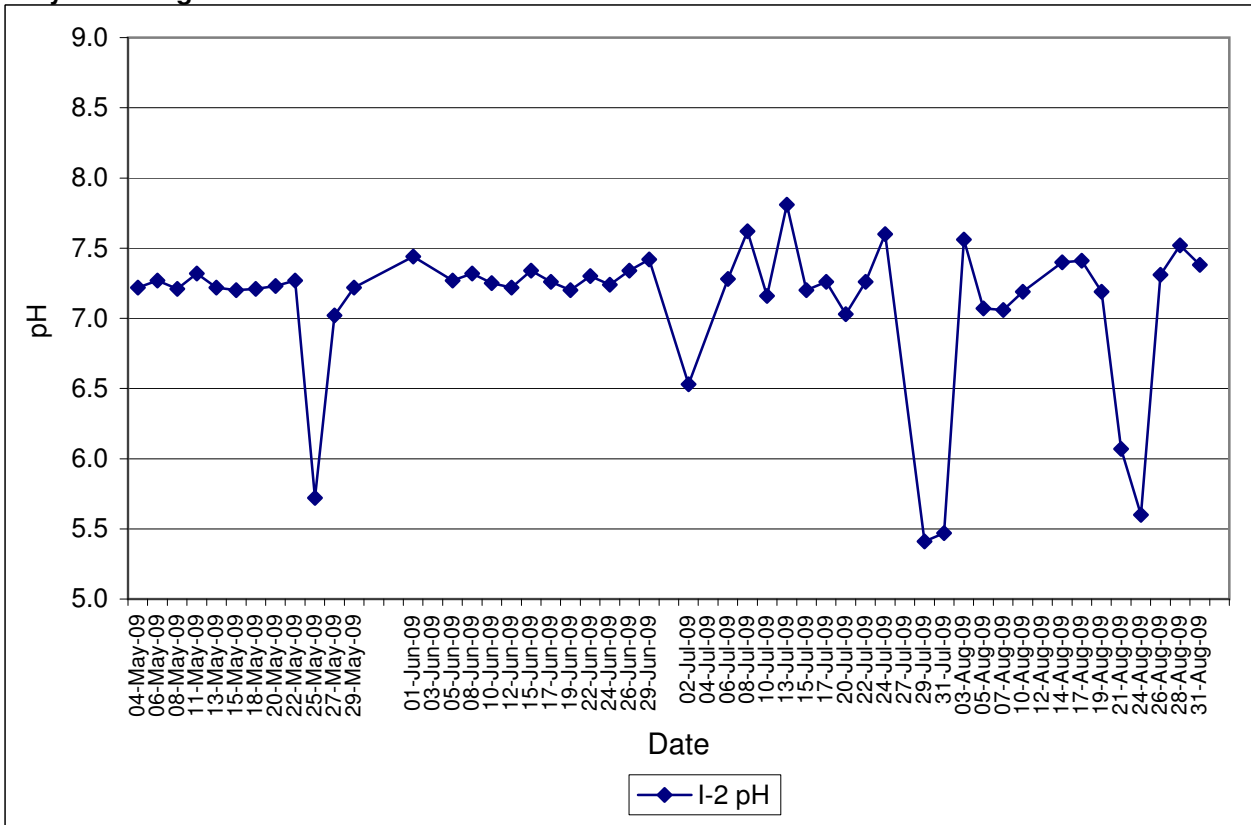
**Contract No. DC/2007/12 - Design and Construction of Tsuen Wan Drainage Tunnel
Water Quality Results at Sik Sik Yuen Ho Fung College (I-1)
May-09 to Aug-09**



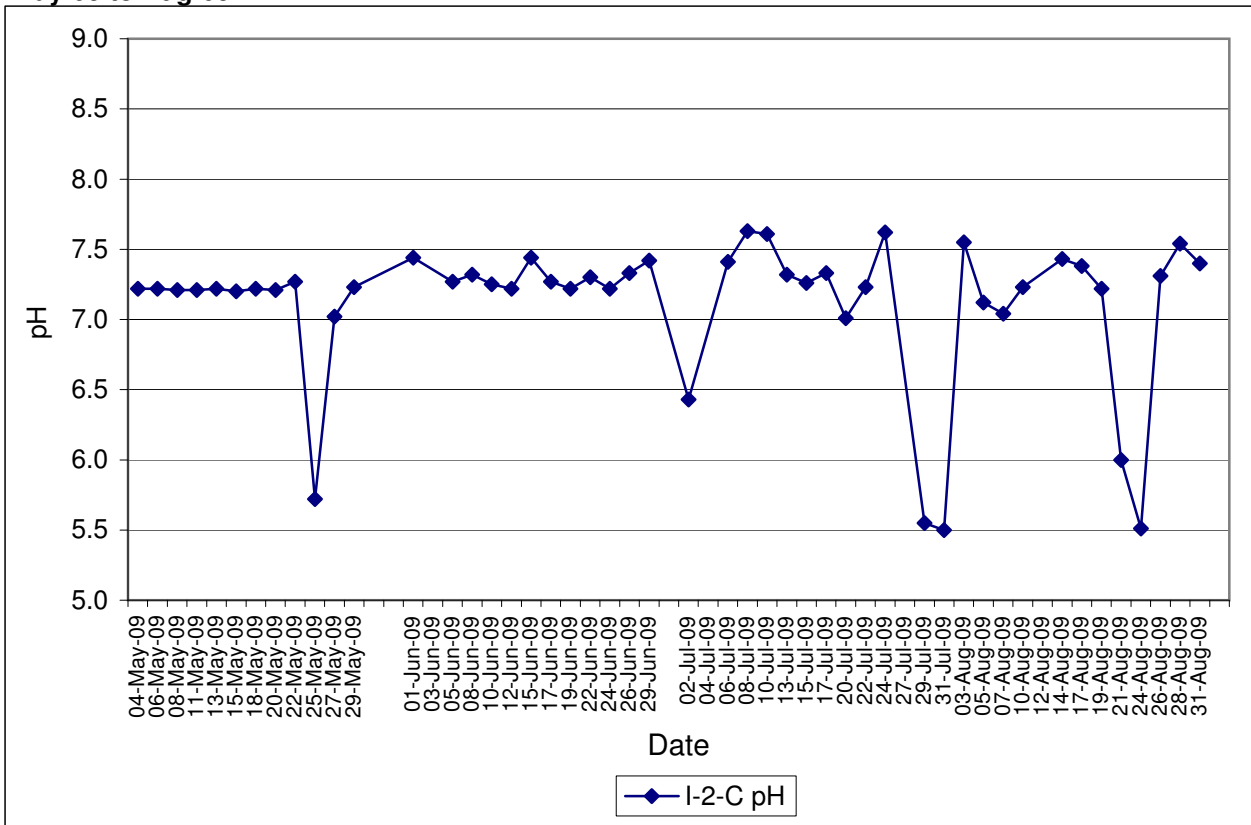
**Contract No. DC/2007/12 - Design and Construction of Tsuen Wan Drainage Tunnel
Water Quality Results at Sik Sik Yuen Ho Fung College (I-1-C)
May-09 to Aug-09**



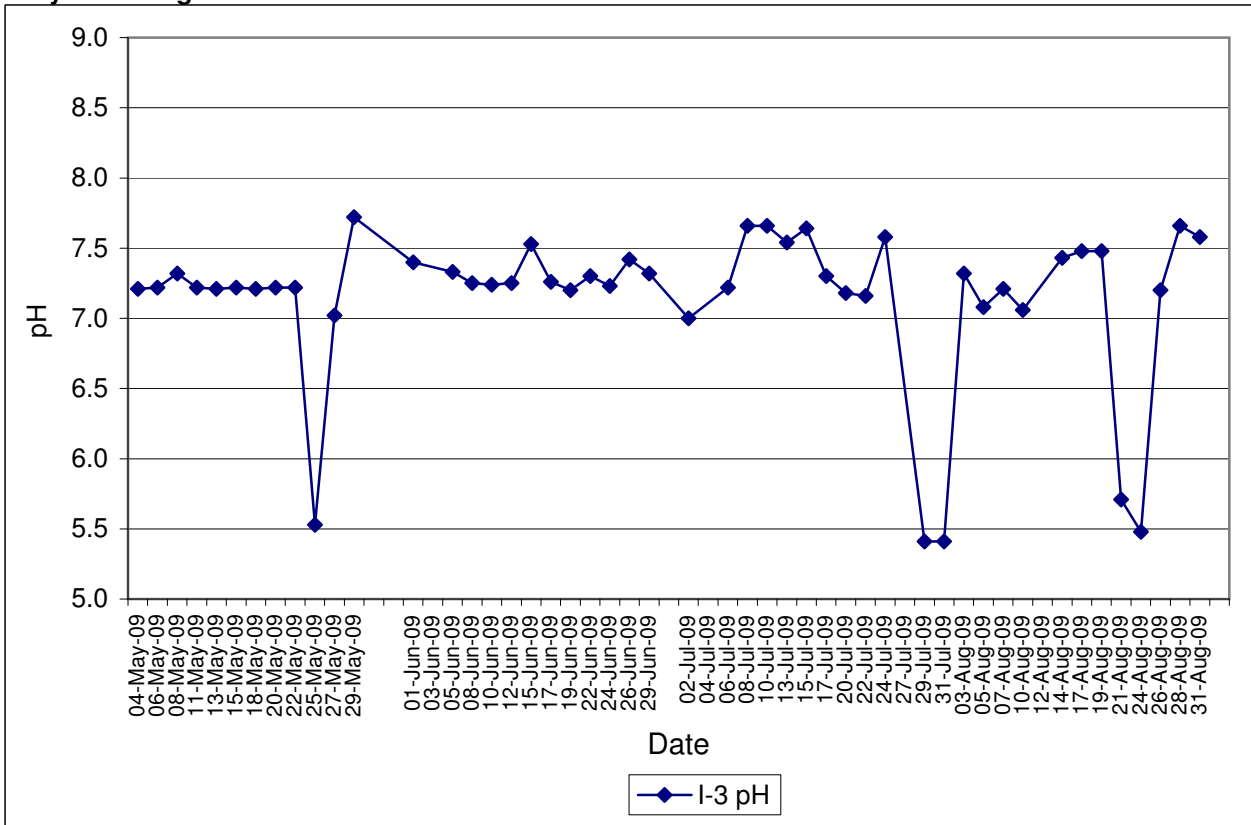
**Contract No. DC/2007/12 - Design and Construction of Tsuen Wan Drainage Tunnel
 Water Quality Results at Hong Hoi Chee Hong Temple (I-2)
 May-09 to Aug-09**



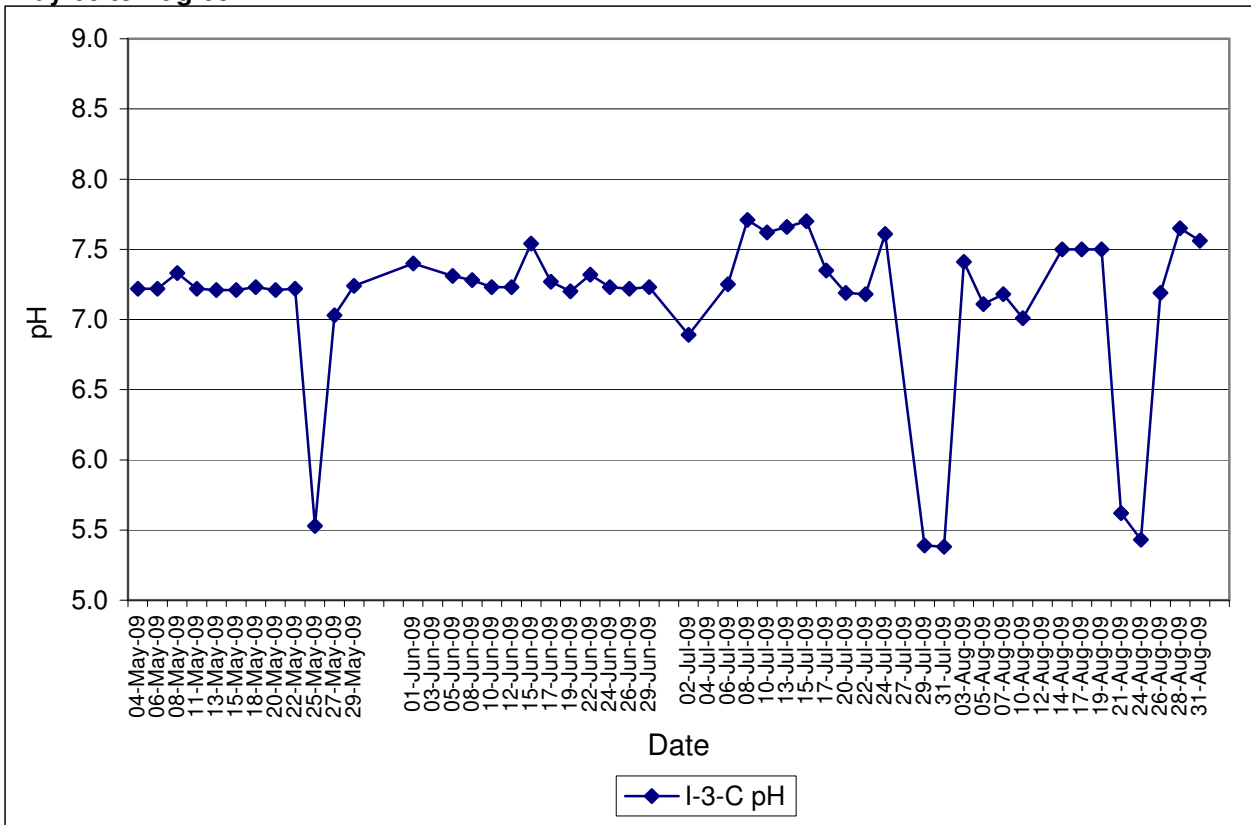
**Contract No. DC/2007/12 - Design and Construction of Tsuen Wan Drainage Tunnel
 Water Quality Results at Hong Hoi Chee Hong Temple (I-2-C)
 May-09 to Aug-09**



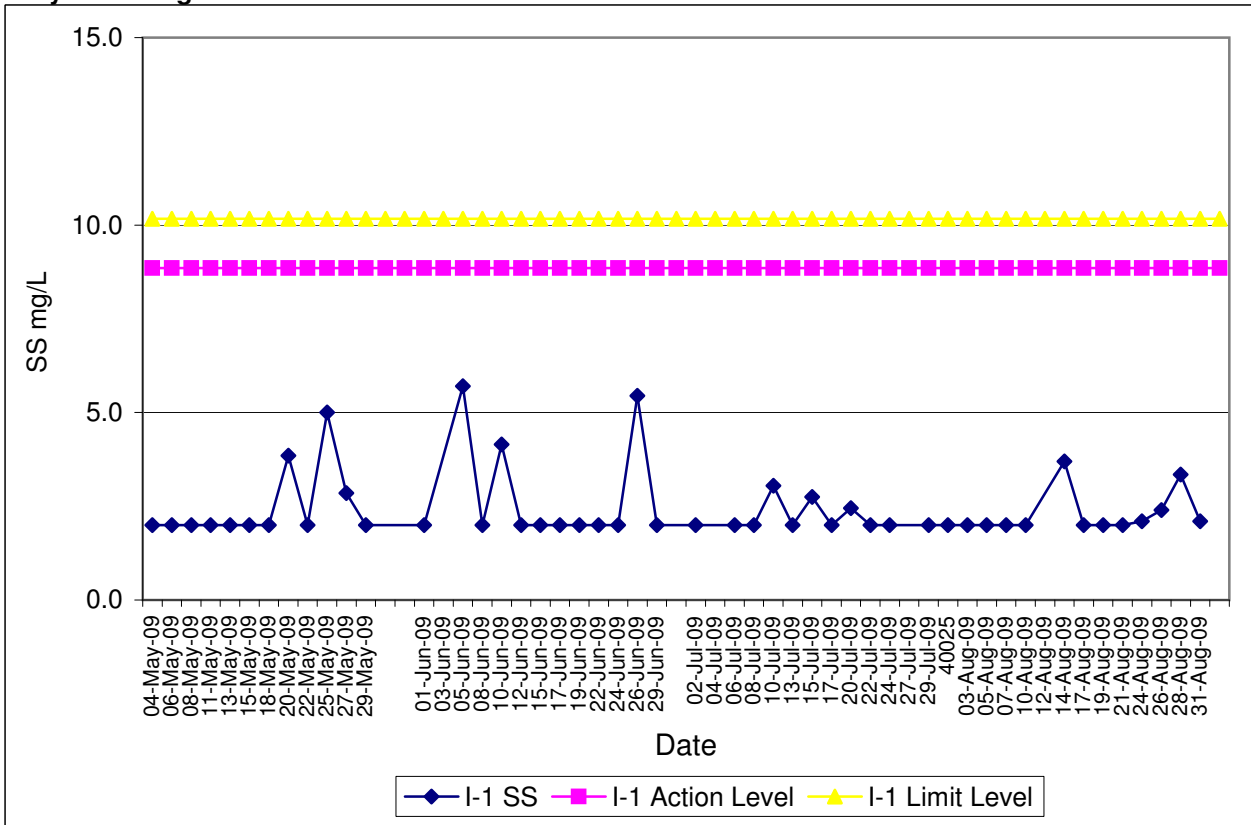
Contract No. DC/2007/12 - Design and Construction of Tsuen Wan Drainage Tunnel
Water Quality Results at Squatters (I-3)
May-09 to Aug-09



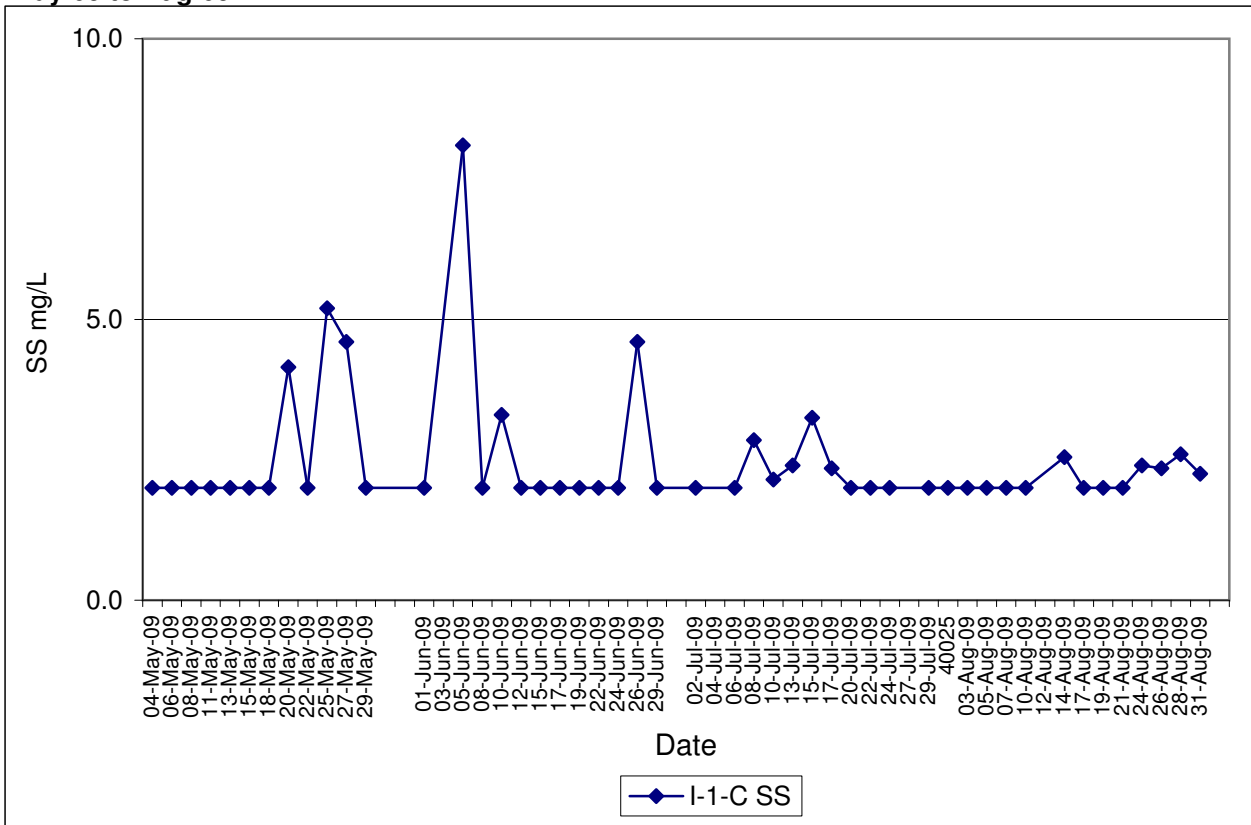
Contract No. DC/2007/12 - Design and Construction of Tsuen Wan Drainage Tunnel
Water Quality Results at Squatters (I-3-C)
May-09 to Aug-09



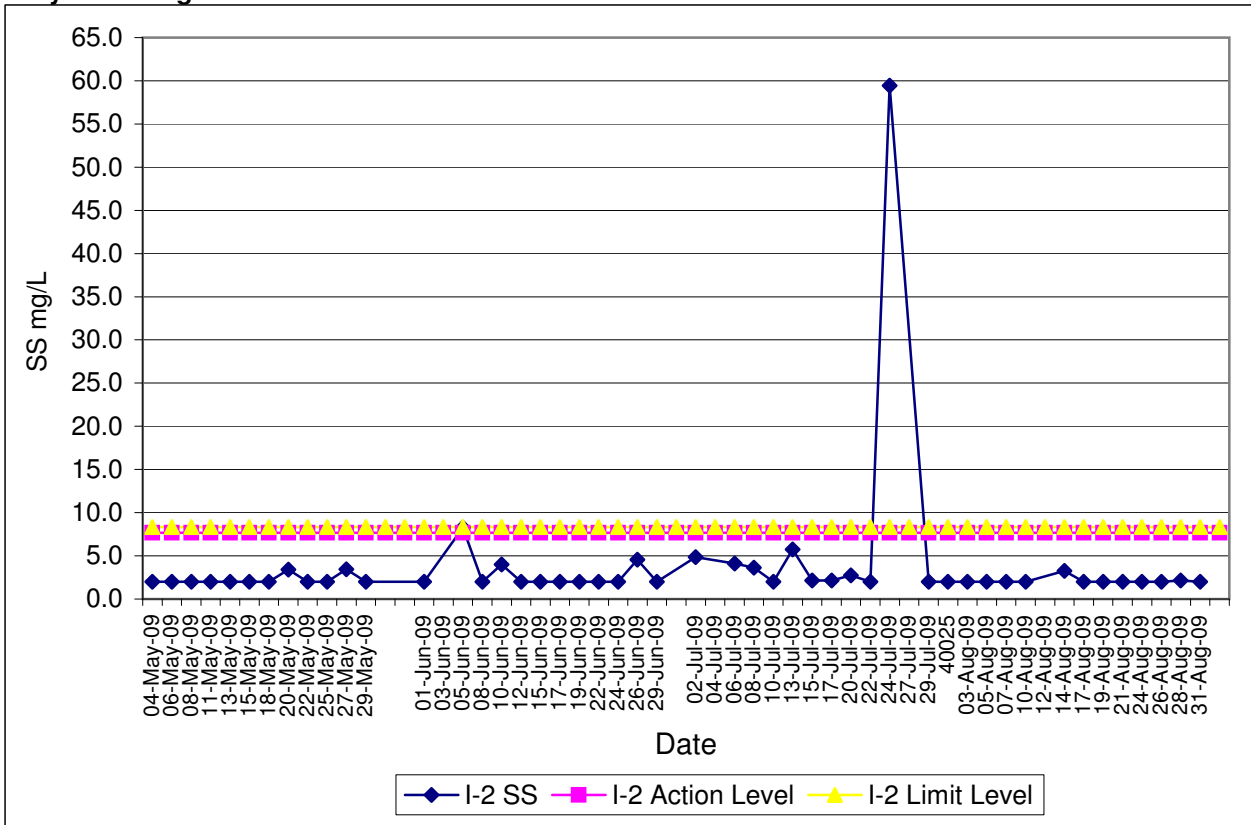
Contract No. DC/2007/12 - Design and Construction of Tsuen Wan Drainage Tunnel
Water Quality Results at Sik Sik Yuen Ho Fung College (I-1)
May-09 to Aug-09



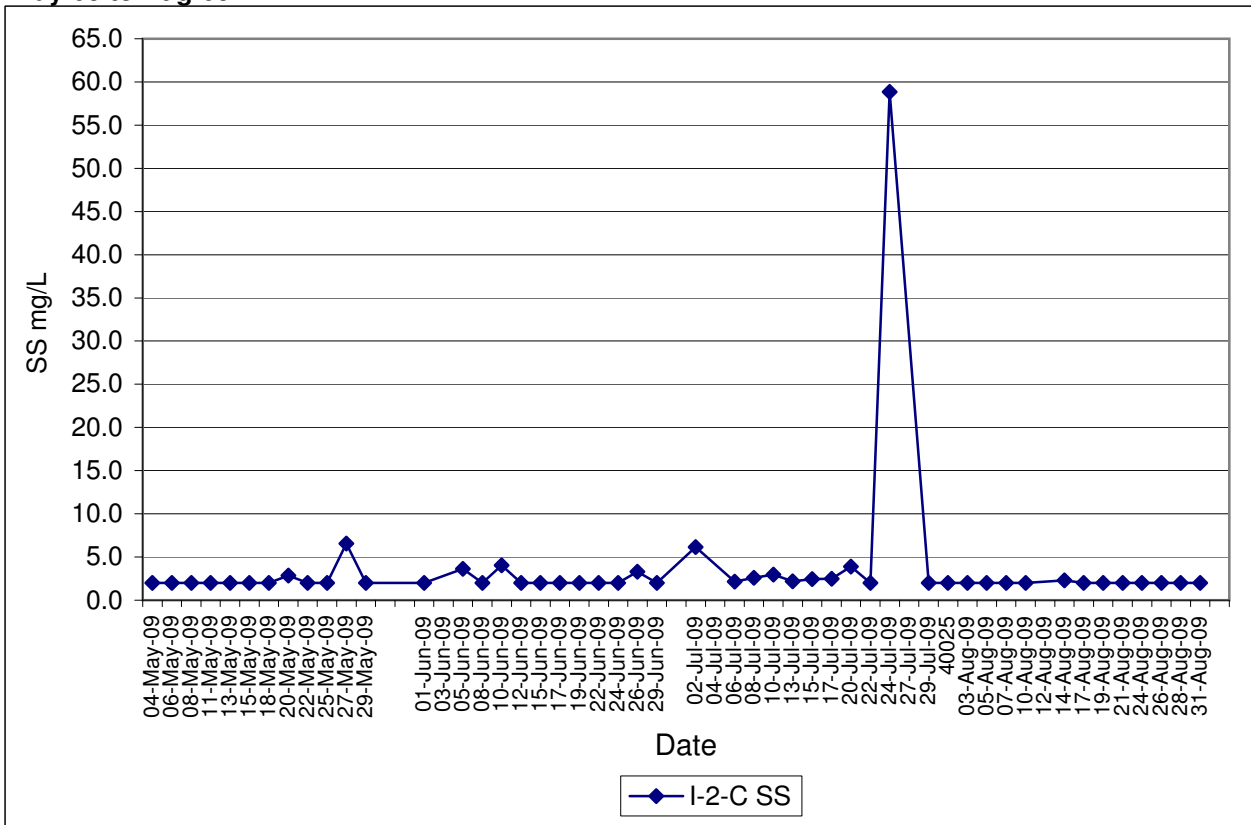
Contract No. DC/2007/12 - Design and Construction of Tsuen Wan Drainage Tunnel
Water Quality Results at Sik Sik Yuen Ho Fung College (I-1-C)
May-09 to Aug-09



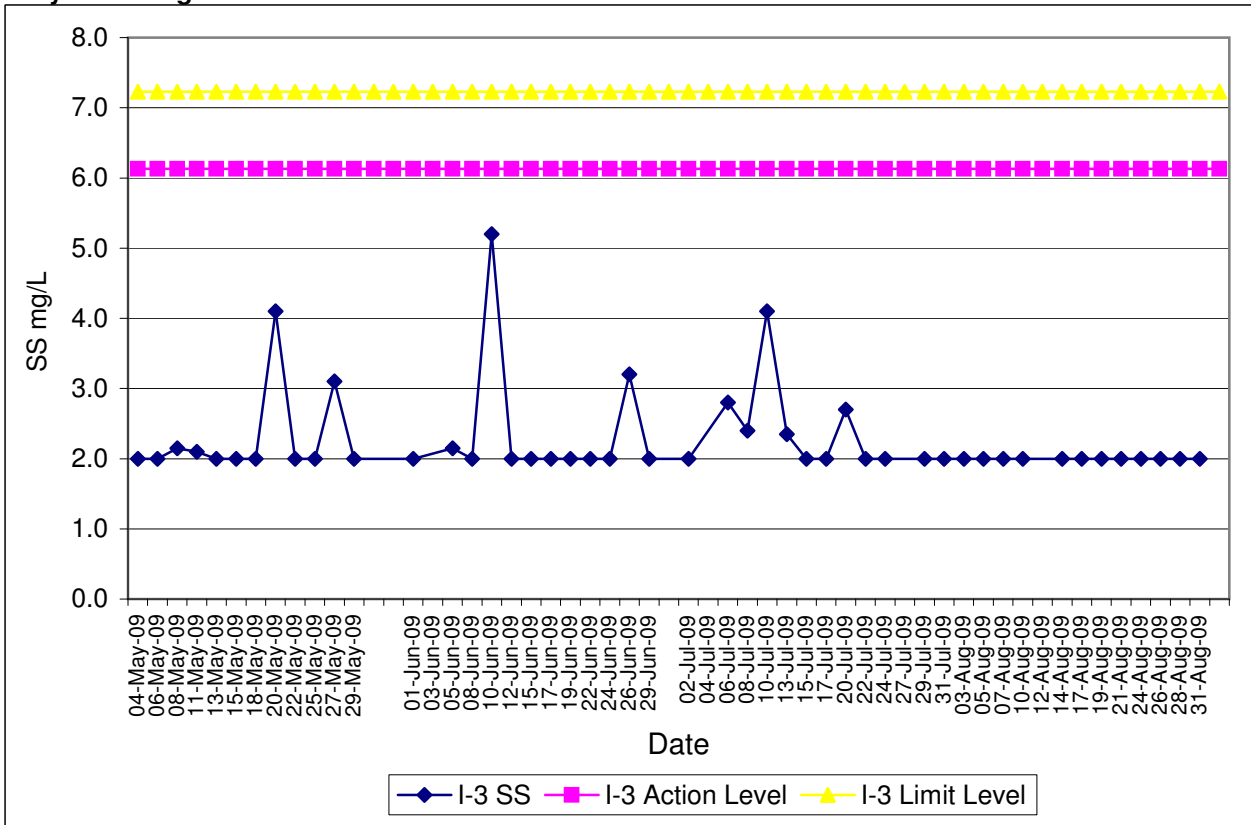
Contract No. DC/2007/12 - Design and Construction of Tsuen Wan Drainage Tunnel
Water Quality Results at Hong Hoi Chee Hong Temple (I-2)
May-09 to Aug-09



Contract No. DC/2007/12 - Design and Construction of Tsuen Wan Drainage Tunnel
Water Quality Results at Hong Hoi Chee Hong Temple (I-2-C)
May-09 to Aug-09



Contract No. DC/2007/12 - Design and Construction of Tsuen Wan Drainage Tunnel
Water Quality Results at Squatters (I-3)
May-09 to Aug-09



Contract No. DC/2007/12 - Design and Construction of Tsuen Wan Drainage Tunnel
Water Quality Results at Squatters (I-3-C)
May-09 to Aug-09

