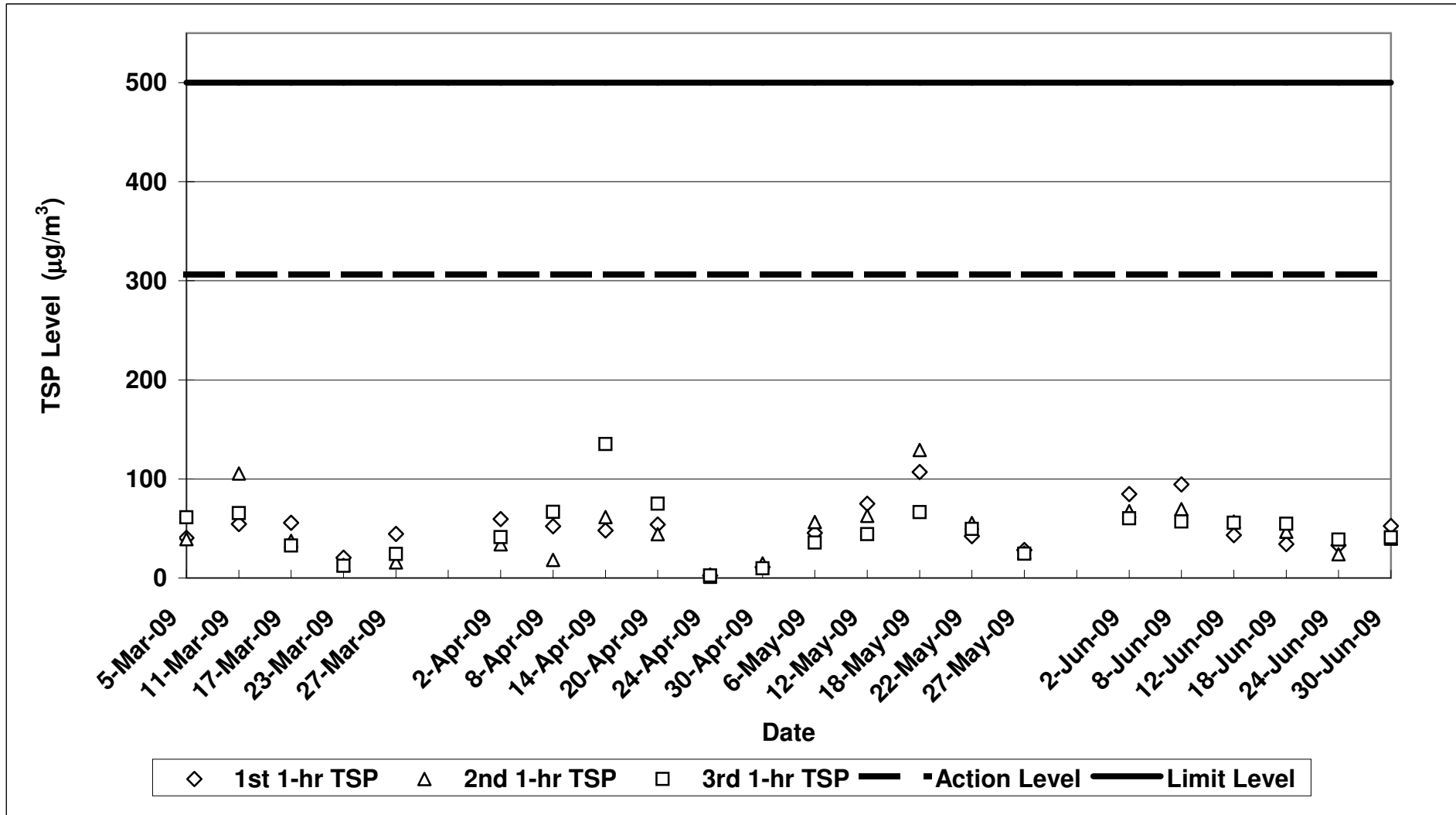


Contract No. DC/2007/12 - Design and Construction of Tsuen Wan Drainage Tunnel

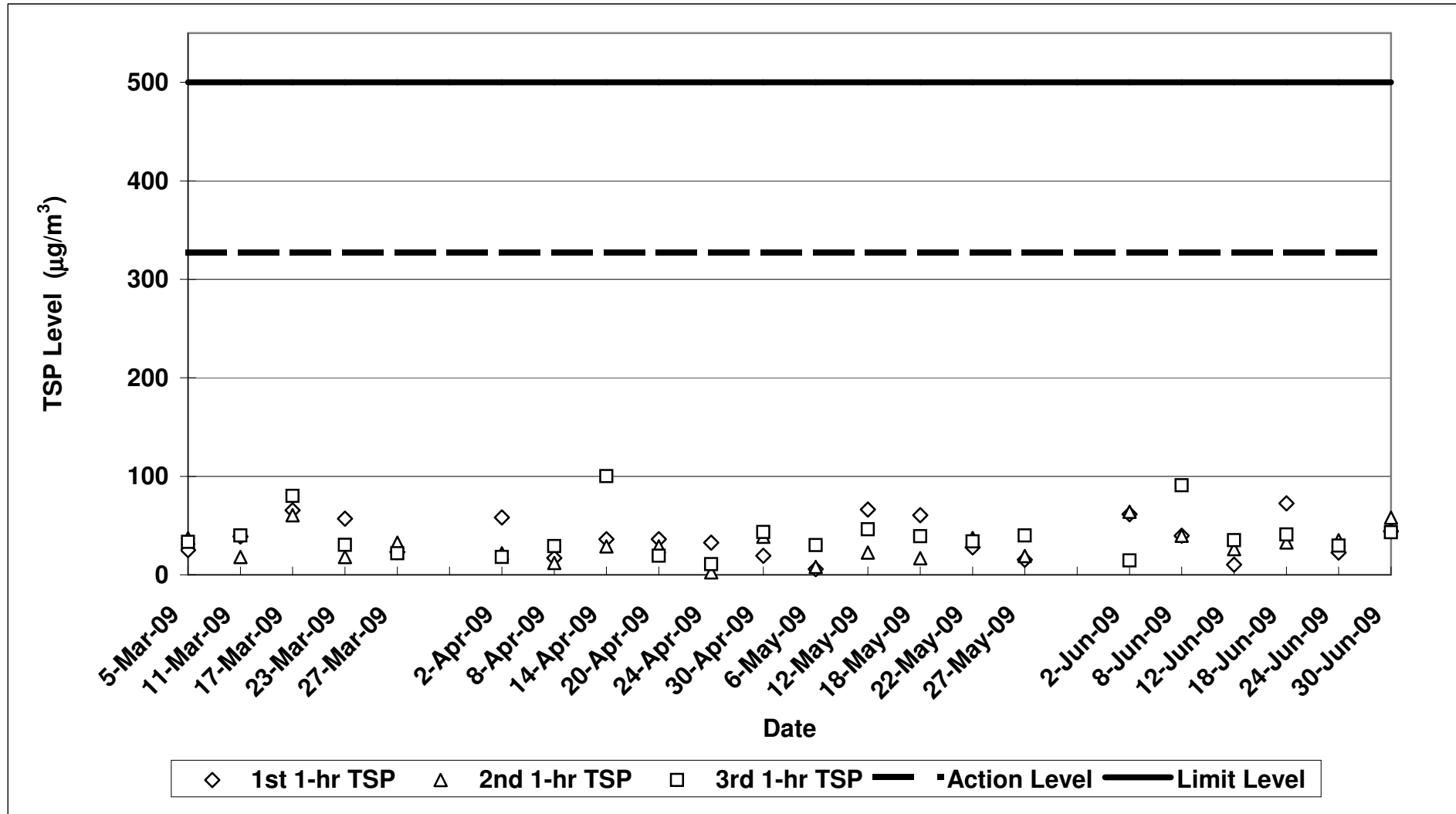
Air Quality Impact Monitoring Results (1-Hour TSP)

Location	Monitoring Date	Weather Conditions	Wind Speed with Direction (m/s)	Temp (°C)	Timer-I	Timer-F	Time (mins)	Flow-I (CFM)	Flow-F (CFM)	Flow-I (m ³ /min)	Flow-F (m ³ /min)	Flow-avg (m ³ /min)	Volume (m ³)	Weight-I (g)	Weight-F (g)	Weight-diff. (g)	1-hr TSP (µg/m ³)	Average 1-Hr TSP (µg/m ³)	Action/Limit Levels (µg/m ³)	Observation / Site Condition	Remark
Sik Sik Yuen Ho Fung College - Intake (ASR1)	2-Jun-09	Cloudy	0.4E	29	575242	575342	60.0	40	40	1.36	1.36	1.36	81.41	2.846	2.8529	0.0069	84.8	70.8	306.6/500	Excavation by backhoe	Nil
		Cloudy	0.4E	29	575342	575442	60.0	40	40	1.36	1.36	1.36	81.41	2.8546	2.8601	0.0055	67.6				
		Cloudy	0.4E	29	575442	575542	60.0	40	40	1.36	1.36	1.36	81.41	2.8291	2.8340	0.0049	60.2				
	8-Jun-09	Cloudy	0.5E	27	575542	575642	60.0	40	40	1.46	1.46	1.46	87.84	2.8942	2.9025	0.0083	94.5	73.6	306.6/500	Excavation by backhoe	Nil
		Cloudy	0.5E	27	575642	575742	60.0	40	40	1.46	1.46	1.46	87.84	2.9028	2.9089	0.0061	69.4				
		Cloudy	0.5E	27	575742	575842	60.0	40	40	1.46	1.46	1.46	87.84	2.9089	2.9039	0.0050	56.9				
	12-Jun-09	Cloudy	0.4E	26	575842	575942	60.0	40	40	1.46	1.46	1.46	87.84	2.8022	2.8060	0.0038	43.3	52.0	306.6/500	Excavation by backhoe	NIL
		Cloudy	0.4E	26	575942	576042	60.0	40	40	1.46	1.46	1.46	87.84	2.8203	2.8343	0.0050	56.9				
		Cloudy	0.4E	26	576042	576142	60.0	40	40	1.46	1.46	1.46	87.84	2.8313	2.8362	0.0049	55.8				
	18-Jun-09	Sunny	0.3E	30	576142	576242	60.0	40	40	1.46	1.46	1.46	87.84	2.8912	2.8942	0.0030	34.2	45.2	306.6/500	Excavation by backhoe	Nil
		Sunny	0.3E	30	576242	576342	60.0	40	40	1.46	1.46	1.46	87.84	2.9068	2.9109	0.0041	46.7				
		Sunny	0.3E	30	576342	576442	60.0	40	40	1.46	1.46	1.46	87.84	2.9041	2.9089	0.0048	54.6				
	24-Jun-09	Cloudy	0.5E	28	576442	576542	60.0	40	40	1.46	1.46	1.46	87.84	2.8227	2.8299	0.0029	33.0	31.9	306.6/500	Excavation by backhoe	NIL
		Cloudy	0.5E	28	576542	576642	60.0	40	40	1.46	1.46	1.46	87.84	2.8008	2.8022	0.0021	23.9				
		Cloudy	0.5E	28	576642	576742	60.0	40	40	1.46	1.46	1.46	87.84	2.8313	2.8347	0.0034	38.7				
	30-Jun-09	Sunny	0.4E	30	576742	576842	60.0	40	40	1.46	1.46	1.46	87.84	2.8724	2.8770	0.0046	52.4	44.4	306.6/500	Excavation by backhoe	NIL
		Sunny	0.4E	30	576842	576942	60.0	40	40	1.46	1.46	1.46	87.84	2.8760	2.8795	0.0035	39.8				
		Sunny	0.4E	30	576942	577042	60.0	40	40	1.46	1.46	1.46	87.84	2.8213	2.8249	0.0036	41.0				
Hong Hoi Chee Hong Temple - Intake (ASR3)	2-Jun-09	Cloudy	0.4E	29	543900	543990	60.0	40	40	1.38	1.38	1.38	82.81	2.8214	2.8295	0.0051	61.6	46.7	327.4/500	Excavation by backhoe	NIL
		Cloudy	0.4E	29	543990	543990	60.0	40	40	1.38	1.38	1.38	82.81	2.8140	2.8190	0.0050	64.0				
		Cloudy	0.4E	29	543990	543990	60.0	40	40	1.38	1.38	1.38	82.81	2.8110	2.8122	0.0012	14.5				
	8-Jun-09	Cloudy	0.4E	27	543990	544090	60.0	40	40	1.47	1.47	1.47	88.12	2.8924	2.8959	0.0035	39.7	56.7	327.4/500	Excavation by backhoe	NIL
		Cloudy	0.4E	27	544090	544190	60.0	40	40	1.47	1.47	1.47	88.12	2.9041	2.9076	0.0035	39.7				
		Cloudy	0.4E	27	544190	544290	60.0	40	40	1.47	1.47	1.47	88.12	2.8446	2.8526	0.0080	90.8				
	12-Jun-09	Cloudy	0.5E	26	544290	544390	60.0	40	40	1.47	1.47	1.47	88.12	2.8112	2.8121	0.0009	10.2	23.8	327.4/500	Excavation by backhoe	NIL
		Cloudy	0.5E	26	544390	544490	60.0	40	40	1.47	1.47	1.47	88.12	2.8260	2.8283	0.0023	26.1				
		Cloudy	0.5E	26	544490	544590	60.0	40	40	1.47	1.47	1.47	88.12	2.8242	2.8273	0.0031	35.2				
	16-Jun-09	Sunny	0.4E	30	544590	544690	60.0	40	40	1.47	1.47	1.47	88.12	2.8441	2.8505	0.0064	72.6	48.8	327.4/500	Excavation by backhoe	NIL
		Sunny	0.4E	30	544690	544790	60.0	40	40	1.47	1.47	1.47	88.12	2.8435	2.8464	0.0029	32.9				
		Sunny	0.4E	30	544790	544890	60.0	40	40	1.47	1.47	1.47	88.12	2.8432	2.8468	0.0036	40.9				
	24-Jun-09	Cloudy	0.3E	28	544890	544990	60.0	40	40	1.47	1.47	1.47	88.12	2.8091	2.8111	0.0020	22.7	29.1	327.4/500	Excavation by backhoe	NIL
		Cloudy	0.3E	28	544990	545090	60.0	40	40	1.47	1.47	1.47	88.12	2.833	2.8361	0.0031	35.2				
		Cloudy	0.3E	28	545090	545190	60.0	40	40	1.47	1.47	1.47	88.12	2.838	2.8406	0.0026	29.5				
	30-Jun-09	Cloudy	0.4E	31	545190	545290	60.0	40	40	1.47	1.47	1.47	88.12	2.8727	2.8766	0.0039	44.3	48.4	327.4/500	Excavation by backhoe	NIL
		Sunny	0.4E	31	545290	545390	60.0	40	40	1.47	1.47	1.47	88.12	2.8807	2.8858	0.0051	57.9				
		Sunny	0.4E	31	545390	545490	60.0	40	40	1.47	1.47	1.47	88.12	2.885	2.8888	0.0038	43.1				
Long Beach Gardens - Outfall (ASR8)	2-Jun-09	Cloudy	0.4E	29	598780	598880	60.0	40	40	1.38	1.38	1.38	82.98	2.8098	2.8127	0.0029	34.9	35.8	336.6/500	Excavation by backhoe	Nil
		Cloudy	0.4E	29	598880	598980	60.0	40	40	1.38	1.38	1.38	82.98	2.8335	2.8370	0.0035	42.2				
		Cloudy	0.4E	29	598980	599080	60.0	40	40	1.38	1.38	1.38	82.98	2.8289	2.8314	0.0025	30.1				
	8-Jun-09	Cloudy	0.5E	27	599080	599180	60.0	40	40	1.28	1.28	1.28	76.51	2.8258	2.8272	0.0014	18.3	20.9	336.6/500	Excavation by backhoe	NIL
		Cloudy	0.5E	27	599180	599280	60.0	40	40	1.28	1.28	1.28	76.51	2.8408	2.8424	0.0016	20.9				
		Cloudy	0.5E	27	599280	599380	60.0	40	40	1.28	1.28	1.28	76.51	2.8403	2.8421	0.0018	23.5				
	12-Jun-09	Cloudy	0.3E	26	599380	599480	60.0	40	40	1.28	1.28	1.28	76.51	2.7941	2.7993	0.0052	68.0	127.2	336.6/500	Excavation by backhoe	No major construction work was observed. High level of TSP at 2nd measurement could be contributed by the nearby traffic.
		Cloudy	0.3E	26	599480	599580	60.0	40	40	1.28	1.28	1.28	76.51	2.8054	2.8259	0.0205	267.9				
		Cloudy	0.3E	26	599580	599680	60.0	40	40	1.28	1.28	1.28	76.51	2.8056	2.8091	0.0035	45.7				
	18-Jun-09	Sunny	0.5E	30	599680	599780	60.0	40	40	1.28	1.28	1.28	76.51	2.8290	2.8325	0.0035	45.7	34.0	336.6/500	Excavation by backhoe	NIL
		Sunny	0.5E	30	599780	599880	60.0	40	40	1.28	1.28	1.28	76.51	2.8347	2.8363	0.0016	20.9				
		Sunny	0.5E	30	599880	599980	60.0	40	40	1.28	1.28	1.28	76.51	2.8542	2.8569	0.0027	35.3				
	24-Jun-09	Cloudy	0.4E	28	599980	600080	60.0	40	40	1.28	1.28	1.28	76.51	2.8318	2.8415	0.0097	126.8	82.3	336.6/500	Excavation by backhoe	NIL
		Cloudy	0.4E	28	600080	600180	60.0	40	40	1.28	1.28	1.28	76.51	2.8762	2.8818	0.0056	73.2				
		Cloudy	0.4E	28	600180	600280	60.0	40	40	1.28	1.28	1.28	76.51	2.8889	2.8925	0.0036	47.1				
	30-Jun-09	Sunny	0.5E	30	600280	600380	60.0	40	40	1.28	1.28	1.28	76.51	2.8733	2.8798	0.0065	85.0	73.6	336.6/500	Excavation by backhoe	NIL
		Sunny	0.5E	30	600380	600480	60.0	40	40	1.28	1.28	1.28	76.51	2.847	2.8538	0.0068	89.9				
		Sunny	0.5E	30	600480	600580	60.0	40	40	1.28	1.28	1.28	76.51	2.8818	2.8854	0.0036	47.1				
Greenview Terrace - Outfall (ASR9)	2-Jun-09	Cloudy	0.5E	29	530680	530780	60.0	40	40	1.42	1.42	1.42	84.98	2.8549	2.8576	0.0027	31.8	37.3	329.2/500	Excavation by backhoe	NIL
		Cloudy	0.5E	29	530780	530880	60.0	40	40	1.42	1.42	1.42	84.98	2.8713	2.8747	0.0034	40.0				
		Cloudy	0.5E	29	530880	530980	60.0	40	40	1.42	1.42	1.42	84.98	2.8468	2.8502	0.0034	40.0				
	8-Jun-09	Cloudy	0.4E	29	530980	531080	60.0	40	40	1.50	1.50	1.50	89.94	2.7931	2.7962	0.0031	34.5	25.2	329.2/500	Excavation by backhoe	NIL
		Cloudy	0.4E	29	531080	531180	60.0	40	40	1.50	1.50	1.50	89.94	2.8286	2.8313	0.0027	30.0				
		Cloudy	0.4E	29	531180	531280	60.0	40	40	1.50	1.50	1.50	89.94	2.8229	2.8239	0.0010	11.1				
	12-Jun-09	Cloudy	0.4E	26	531280	531380	60.0	40	40	1.50	1.50	1.50	89.94	2.8197	2.8272	0.0075	83.4	54.5	329.2/500	Excavation by backhoe	NIL

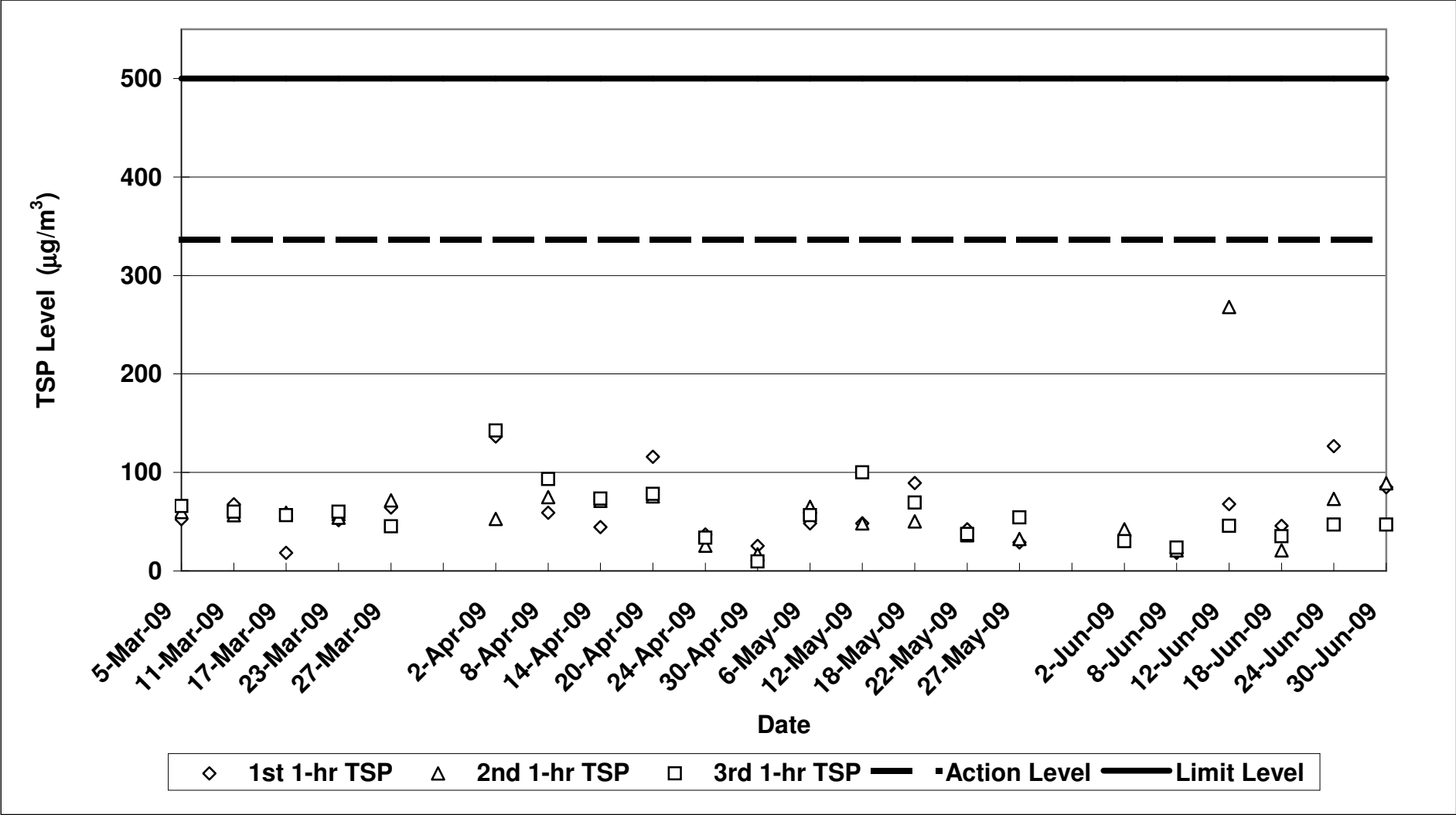
**Contract No. DC/2007/12 - Design and Construction of Tsuen Wan Drainage Tunnel
 Air Quality Monitoring (1-hr TSP) Results at Sik Sik Yuen Ho Fung College - Intake (ASR1)
 Mar-09 to Jun-09**



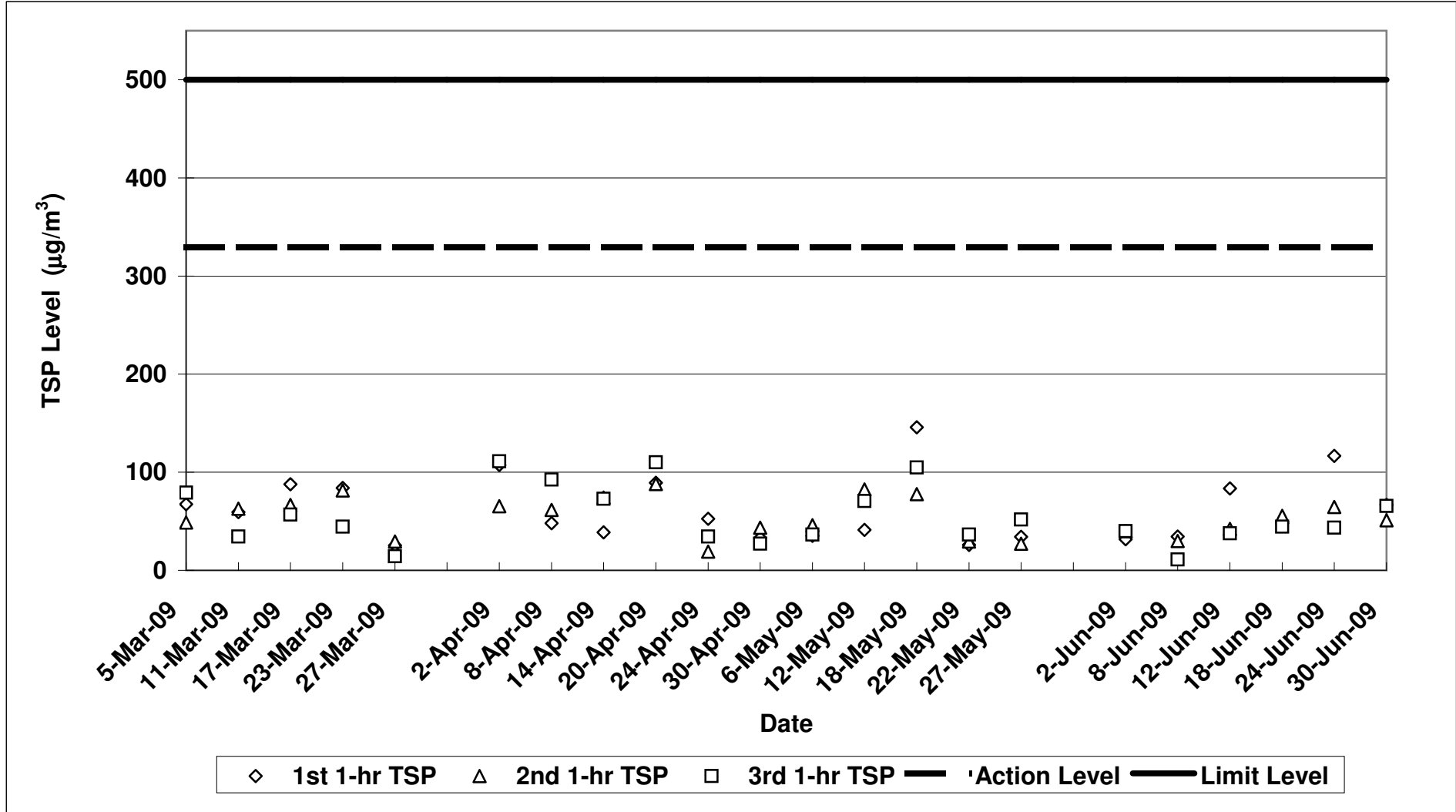
**Contract No. DC/2007/12 - Design and Construction of Tsuen Wan Drainage Tunnel
 Air Quality Monitoring (1-hr TSP) Results at Hong Hoi Chee Hong Temple - Intake (ASR3)
 Mar-09 to Jun-09**



**Contract No. DC/2007/12 - Design and Construction of Tsuen Wan Drainage Tunnel
 Air Quality Monitoring (1-hr TSP) Results at Long Beach Gardens - Outfall (ASR8)
 Mar-09 to Jun-09**



**Contract No. DC/2007/12 - Design and Construction of Tsuen Wan Drainage Tunnel
 Air Quality Monitoring (1-hr TSP) Results at Greenview Terrance - Outfall (ASR9)
 Mar-09 to Jun-09**



Contract No. DC/2007/12 - Design and Construction of Tsuen Wan Drainage Tunnel

Noise Impact Monitoring Results

Monitoring Locations	Date	Weather Conditions	Temperature (°C)	Wind Speed (m/s)	Wind Direction	Start Time	End Time	BL ¹ dB(A)	LL ² dB(A)	L _{eq} (30min) dB(A)	L ₁₀ (30min) dB(A)	L ₉₀ (30min) dB(A)	CNL ³ dB(A)	Observation / Site Condition	Remark
Sik Sik Yuen Ho Fung College NSR 1	02-Jun-09	Cloudy	29	0.4	E	17:00	17:30	66.1	70	64.5	67.1	61.5	-	Excavation by backhoe	Traffic noise
	08-Jun-09	Cloudy	26	0.5	E	17:00	17:30	66.1	65	62.4	65.5	59.6	-	Excavation by backhoe	Traffic noise
	18-Jun-09	Sunny	30	0.3	E	08:30	09:00	66.1	65	63.0	66.0	60.0	-	Excavation by backhoe	Traffic noise
	24-Jun-09	Cloudy	30	0.5	E	15:15	15:45	66.1	70	63.8	66.4	60.7	-	Excavation by backhoe	Nil
	30-Jun-09	Sunny	30	0.4	E	13:20	13:50	66.1	70	64.0	67.3	63.3	-	Nil	Traffic noise
Hong Hoi Chee Hong Temple NSR 3	02-Jun-09	Cloudy	29	0.4	E	08:30	09:00	57.9	75	63.3	66.2	60.2	-	Nil	Nil
	08-Jun-09	Cloudy	26	0.4	E	08:30	09:00	57.9	75	67.1	69.5	64.4	-	Nil	Traffic noise , water fall
	18-Jun-09	Sunny	30	0.4	E	11:30	12:00	57.9	75	64.7	67.6	59.5	-	Nil	Traffic noise
	24-Jun-09	Cloudy	28	0.3	E	08:30	09:00	57.9	75	64.2	67.2	59.0	-	Nil	Traffic noise , water fall
	30-Jun-09	Sunny	30	0.4	E	08:30	09:00	57.9	75	61.5	64.5	57.0	-	Excavation by backhoe	Traffic noise
Squatters NSR 6	02-Jun-09	Cloudy	29	0.5	E	14:00	14:30	61.2	75	61.6	64.5	57.2	-	Excavation by backhoe	Water fall
	08-Jun-09	Cloudy	26	0.3	E	10:00	10:30	61.2	75	61.6	64.5	59.2	-	Excavation by backhoe	Water fall
	18-Jun-09	Sunny	30	0.4	E	14:15	14:45	61.2	75	62.3	65.4	59.6	-	Nil	Water fall
	24-Jun-09	Cloudy	30	0.5	E	14:20	14:50	61.2	75	63.5	66.5	60.3	-	Nil	Water fall
	30-Jun-09	Sunny	30	0.5	E	16:30	17:00	61.2	75	62.6	64.7	57.9	-	Nil	Water fall
Long Beach Gardens NSR 8	02-Jun-09	Cloudy	29	0.4	E	10:20	10:50	60.9	75	59.4	62.5	56.2	-	Excavation by backhoe	Traffic noise
	08-Jun-09	Cloudy	26	0.5	E	14:20	14:50	60.9	75	62.1	64.9	59.2	-	Nil	Traffic noise
	18-Jun-09	Sunny	30	0.5	E	15:20	15:50	60.9	75	63.8	66.7	60.5	-	Nil	Traffic noise
	24-Jun-09	Cloudy	30	0.4	E	09:50	10:20	60.9	75	63.2	65.6	60.0	-	Excavation by backhoe	Traffic noise
	30-Jun-09	Sunny	30	0.5	E	09:50	10:20	60.9	75	61.8	64.4	58.4	-	Excavation by backhoe	Traffic noise
Greenview Terrace NSR 9	02-Jun-09	Cloudy	29	0.5	E	09:20	09:50	59.7	75	72.4	74.4	68.2	-	Excavation by backhoe	Traffic noise
	08-Jun-09	Cloudy	26	0.4	E	15:20	15:50	59.7	75	70.2	73.2	67.3	-	Nil	Nil
	18-Jun-09	Sunny	30	0.4	E	17:20	17:50	59.7	75	70.2	73.1	66.9	-	Nil	Traffic noise
	24-Jun-09	Cloudy	30	0.4	E	11:20	11:50	59.7	75	70.3	73.4	67.4	-	Excavation by backhoe	Nil
	30-Jun-09	Sunny	30	0.4	E	10:45	11:15	59.7	75	71.5	74.5	68.7	-	Soil Nailing,Excavation & Breaking by backhoe	Traffic noise

1: Baseline Noise Level

2: Limit Level

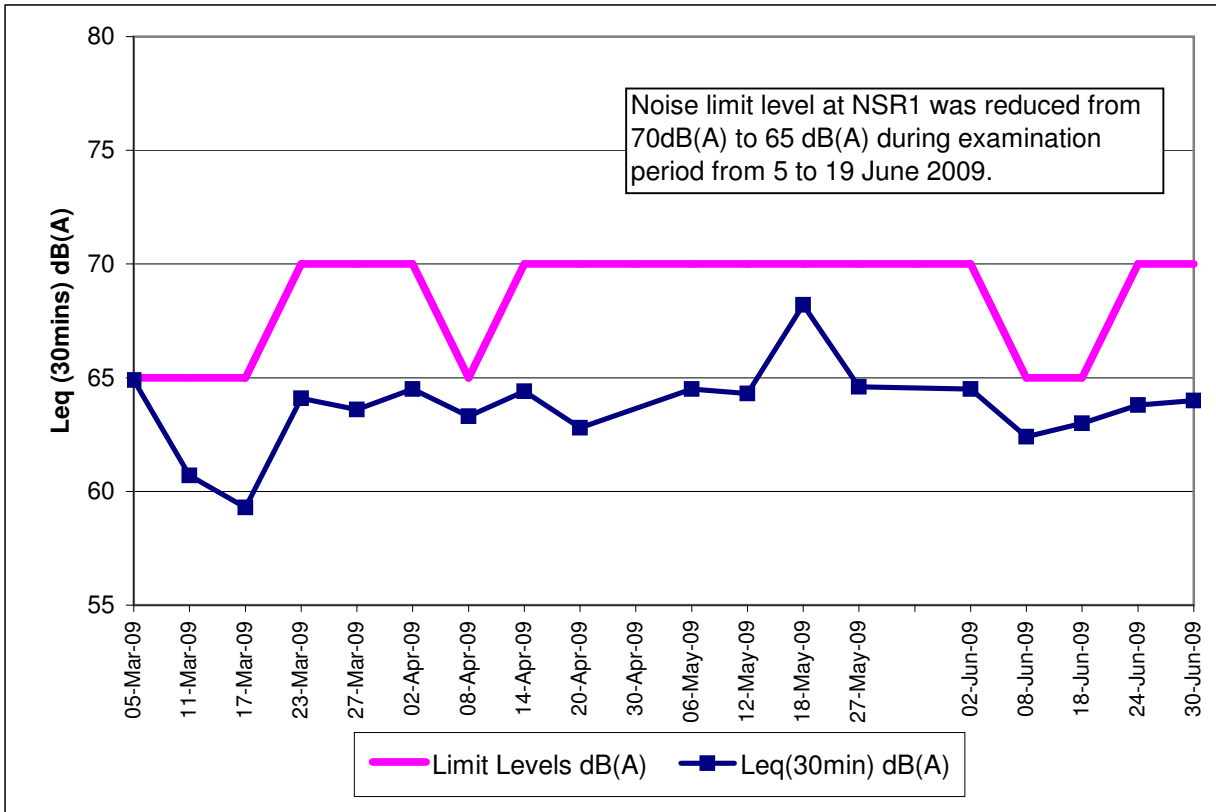
3: Corrected Noise Level

Note:

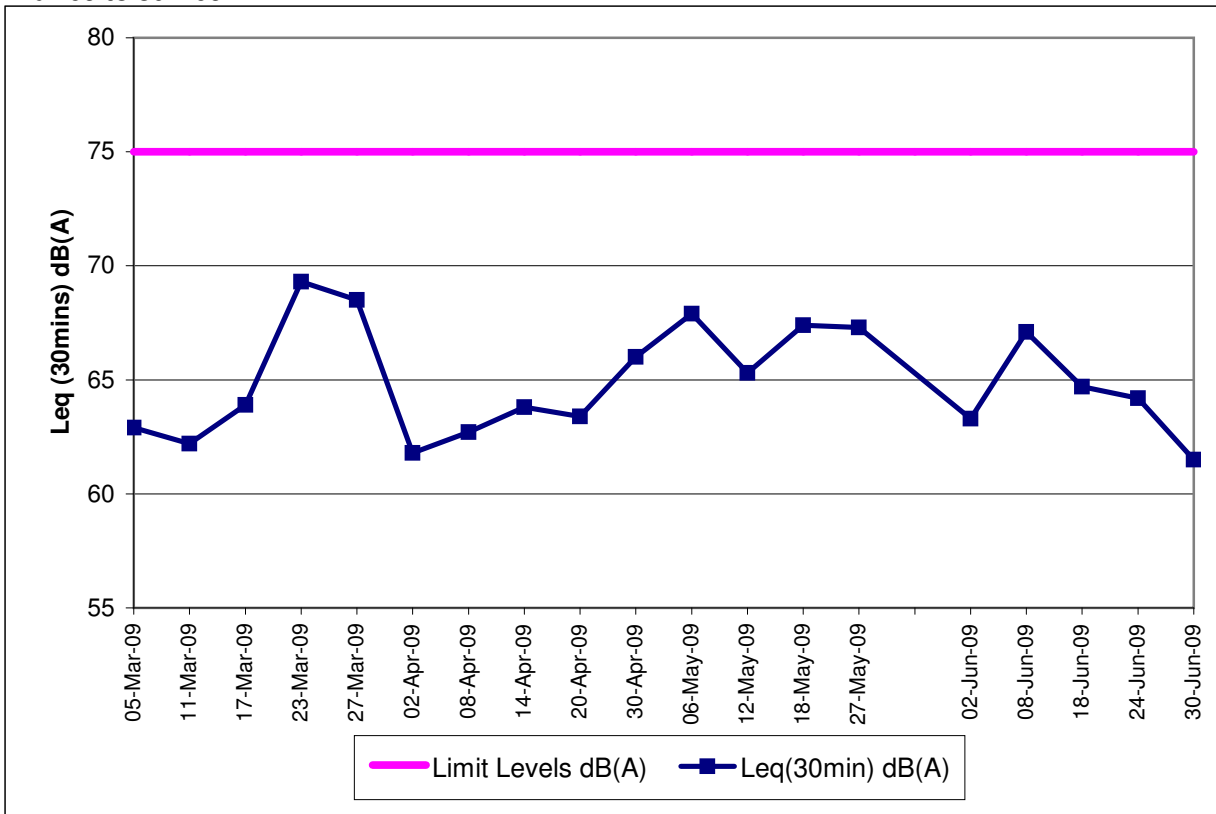
The limit level of NSR1 is 65dB(A) during school examination period.

Red Bold indicates an exceedance of Limit Level

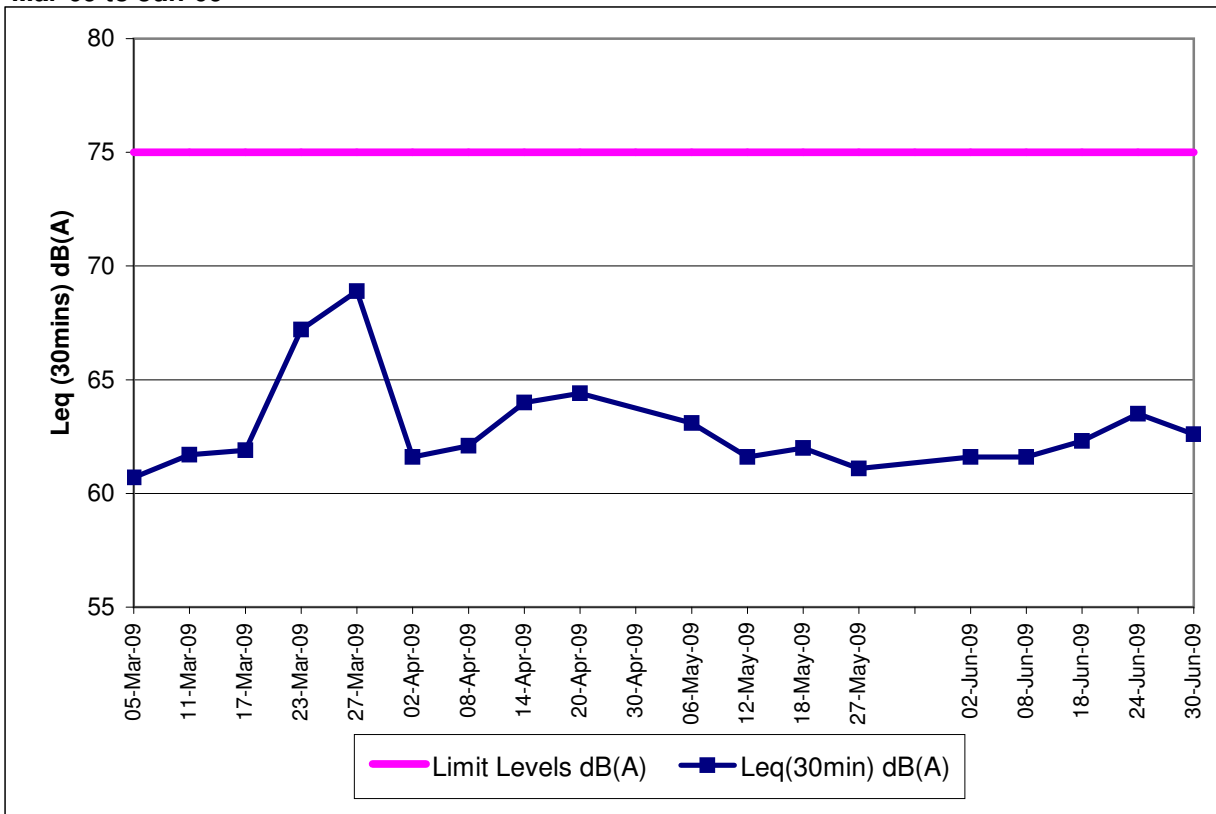
**Contract No. DC/2007/12 - Design and Construction of Tsuen Wan Drainage Tunnel
 Noise Monitoring Results at Sik Sik Yuen Ho Fung College (NSR 1)
 Mar-09 to Jun-09**



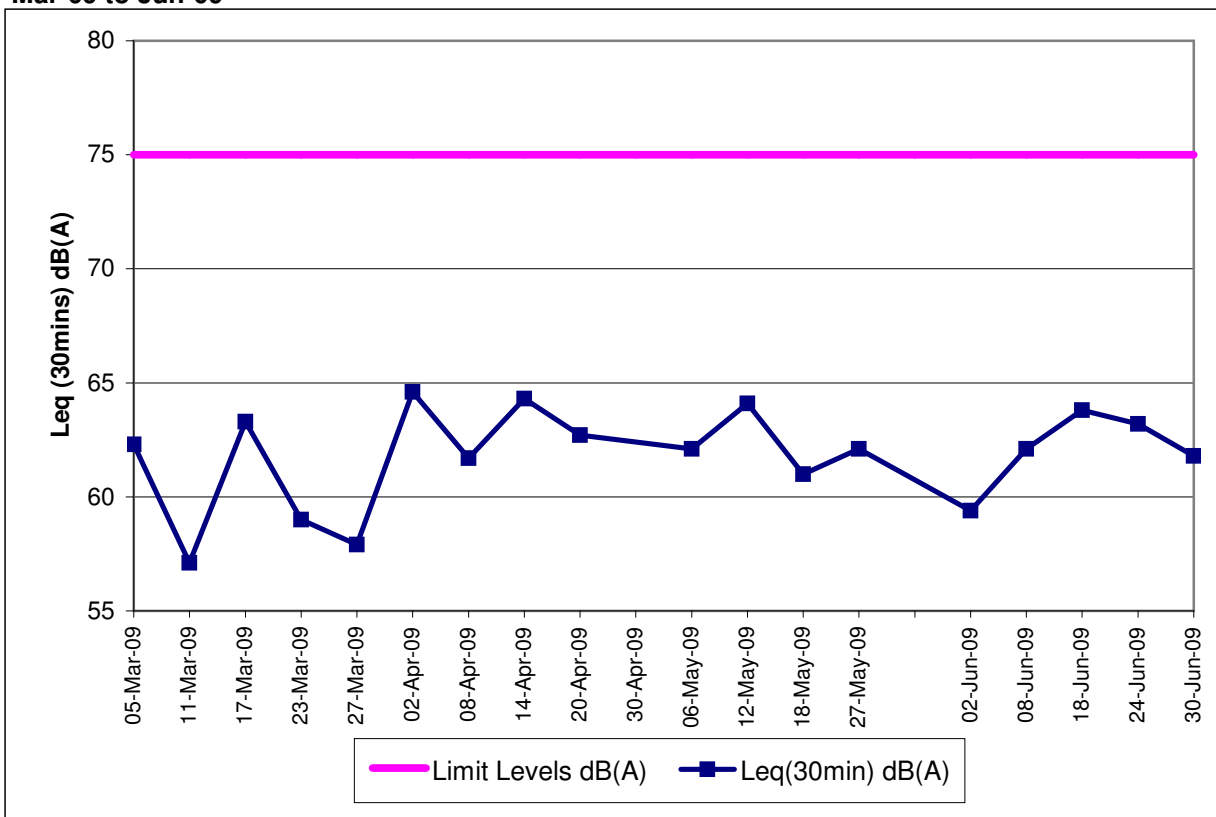
**Contract No. DC/2007/12 - Design and Construction of Tsuen Wan Drainage Tunnel
 Noise Monitoring Results at Hong Hoi Chee Hong Temple (NSR 3)
 Mar-09 to Jun-09**



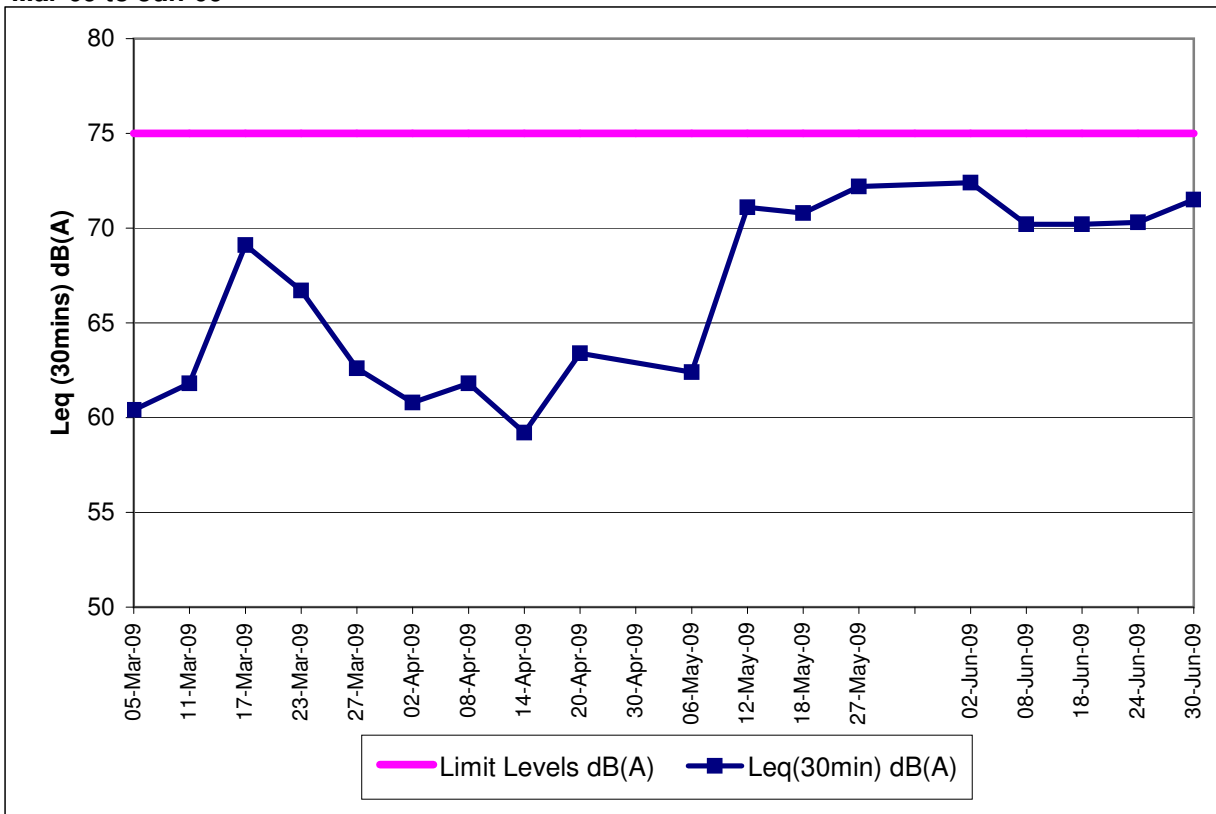
**Contract No. DC/2007/12 - Design and Construction of Tsuen Wan Drainage Tunnel
 Noise Monitoring Results at Squatters (NSR 6)
 Mar-09 to Jun-09**



**Contract No. DC/2007/12 - Design and Construction of Tsuen Wan Drainage Tunnel
 Noise Monitoring Results at Long Beach Gardens (NSR 8)
 Mar-09 to Jun-09**



**Contract No. DC/2007/12 - Design and Construction of Tsuen Wan Drainage Tunnel
Noise Monitoring Results at Greenview Terrace (NSR 9)
Mar-09 to Jun-09**

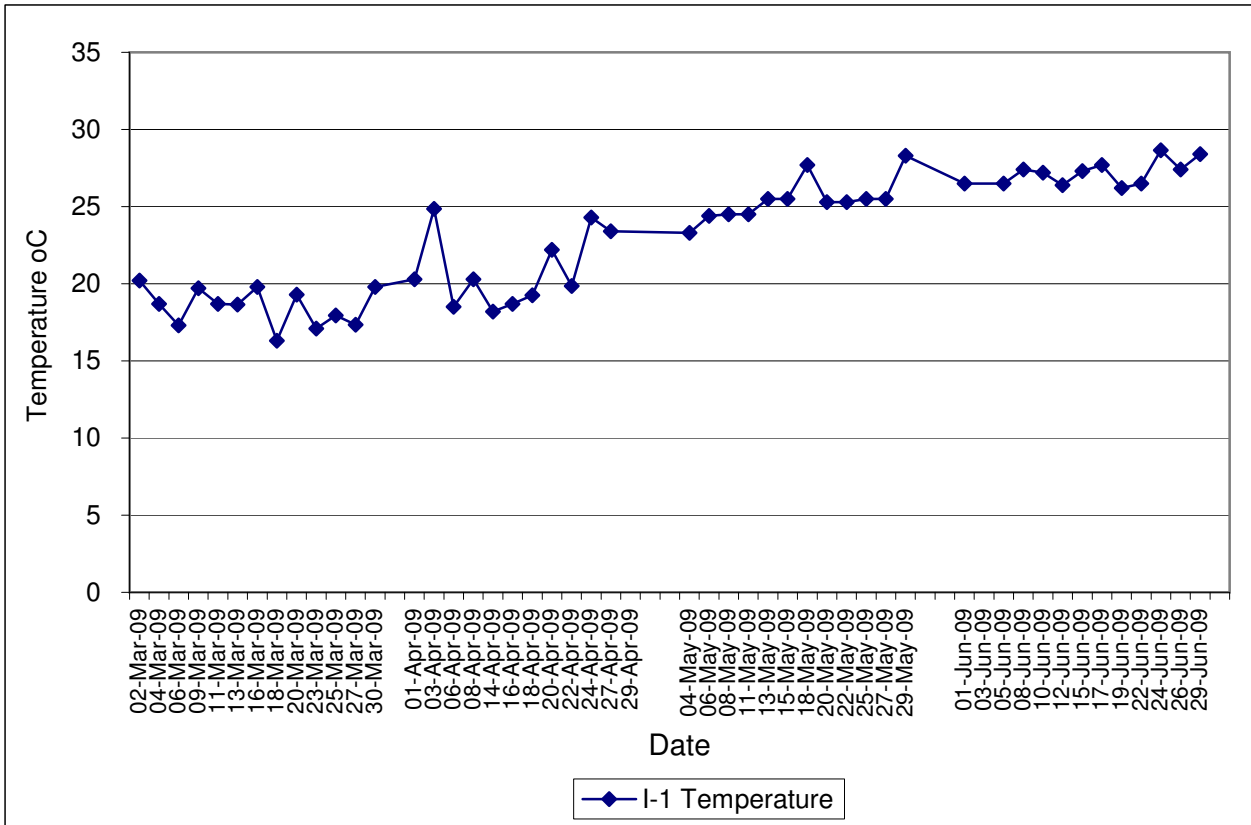


Contract No. DC/2007/12 - Design and Construction of Tsuen Wan Drainage Tunnel

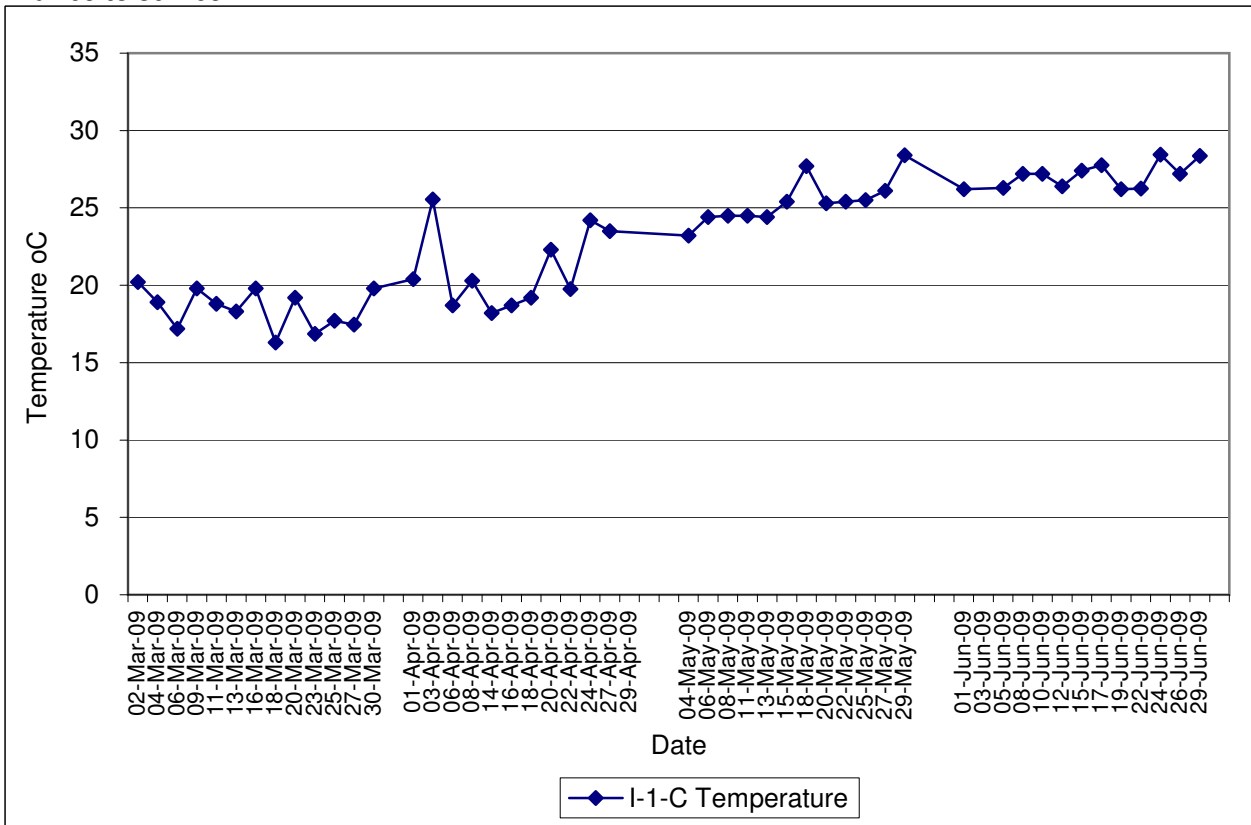
Water Quality Impact Monitoring Results

Monitoring Locations	Date	Start Time	Weather	Water Depth(m)	Temp			DO(mg/L)			Action/Limit Level of DO(mg/L)	pH			Turbidity(NTU)			Action/Limit Level of Tby	SS (mg/L)			Action/Limit Level of SS(mg/L)	Remarks:	Action to be taken
					1	2	Avg	1	2	Avg		1	2	Avg	1	2	Avg		1	2	Avg			
Sik Sik Yuen Ho Fung College I-1	01-Jun-09	09:37	Cloudy	<1	26.50	26.50	26.50	6.57	6.58	6.58	7.21	7.21	7.21	5.22	5.20	5.21	2.0	2.0	2.0	Nil	Nil			
	03-Jun-09	-	-	-	-	-	-	-	-	-	-	-	-	-	-	-	-	-	-	Monitoring was cancelled due to thunderstorm warning	Nil			
	05-Jun-09	09:18	Cloudy	<1	26.50	26.50	26.50	6.07	6.11	6.09	7.30	7.30	7.30	6.08	6.10	6.09	5.6	5.8	5.7	Nil	Nil			
	08-Jun-09	13:35	Cloudy	<1	27.40	27.40	27.40	5.88	6.03	5.96	7.32	7.32	7.32	6.33	6.25	6.29	2.0	2.0	2.0	Nil	Nil			
	10-Jun-09	09:19	Cloudy	<1	27.20	27.20	27.20	6.52	6.65	6.59	7.23	7.23	7.23	6.38	6.35	6.37	4.1	4.2	4.2	Nil	Nil			
	12-Jun-09	09:55	Cloudy	<1	26.40	26.40	26.40	6.25	6.26	6.26	7.23	7.23	7.23	4.23	4.26	4.25	2.0	2.0	2.0	Nil	Nil			
	15-Jun-09	09:27	Sunny	<1	27.30	27.30	27.30	6.57	6.55	6.56	7.42	7.42	7.42	4.21	4.32	4.27	2.0	2.0	2.0	Nil	Nil			
	17-Jun-09	10:35	Sunny	<1	27.70	27.70	27.70	6.34	6.31	6.33	7.32	7.33	7.33	6.32	6.17	6.25	2.0	2.0	2.0	Nil	Nil			
	19-Jun-09	09:37	Cloudy	<1	26.20	26.20	26.20	6.05	6.02	6.04	7.05	7.03	7.04	6.32	6.21	6.27	2.0	2.0	2.0	Nil	Nil			
	22-Jun-09	09:45	Cloudy	<1	26.50	26.50	26.50	6.06	6.02	6.04	7.33	7.33	7.33	5.15	5.11	5.13	2.0	2.0	2.0	Nil	Nil			
	24-Jun-09	13:25	Cloudy	<1	28.70	28.60	28.65	5.61	5.64	5.63	7.23	7.26	7.25	6.25	6.22	6.24	2.0	2.0	2.0	Nil	Nil			
	26-Jun-09	09:35	Cloudy	<1	27.40	27.40	27.40	5.44	5.43	5.44	7.30	7.30	7.30	5.17	5.14	5.16	5.3	5.6	5.5	Nil	Nil			
	29-Jun-09	13:26	Fine	<1	28.40	28.40	28.40	5.37	5.36	5.37	7.32	7.32	7.32	6.07	6.05	6.06	2.0	2.0	2.0	Nil	Nil			
	Sik Sik Yuen Ho Fung College I-1-C	01-Jun-09	09:15	Cloudy	<1	26.20	26.20	26.20	6.42	6.40	6.41	7.21	7.21	7.21	5.41	5.36	5.39	2.0	2.0	2.0	Nil	Nil		
03-Jun-09		-	-	-	-	-	-	-	-	-	-	-	-	-	-	-	-	-	-	Monitoring was cancelled due to thunderstorm warning	Nil			
05-Jun-09		09:07	Cloudy	<1	26.30	26.30	26.30	6.18	6.17	6.18	7.32	7.32	7.32	6.18	6.17	6.18	8.5	7.7	8.1	Nil	Nil			
08-Jun-09		13:15	Cloudy	<1	27.20	27.20	27.20	5.73	5.77	5.75	7.32	7.32	7.32	6.41	6.43	6.42	2.0	2.0	2.0	Nil	Nil			
10-Jun-09		09:09	Cloudy	<1	27.20	27.20	27.20	6.52	6.51	6.52	7.22	7.22	7.22	6.42	6.44	6.43	3.6	3.0	3.3	Backhoe excavation	Nil			
12-Jun-09		09:30	Cloudy	<1	26.40	26.40	26.40	6.14	6.14	6.14	7.25	7.25	7.25	4.42	4.54	4.48	2.0	2.0	2.0	Backhoe excavation	Nil			
15-Jun-09		09:00	Sunny	<1	27.40	27.40	27.40	6.52	6.48	6.50	7.44	7.42	7.43	5.36	5.22	5.29	2.0	2.0	2.0	Backhoe excavation x2	Nil			
17-Jun-09		10:15	Sunny	<1	27.80	27.70	27.75	6.25	6.28	6.27	7.32	7.32	7.32	6.45	6.41	6.43	2.0	2.0	2.0	Backhoe excavation x2	Nil			
19-Jun-09		09:16	Cloudy	<1	26.20	26.20	26.20	6.11	6.13	6.12	7.02	7.02	7.02	6.37	6.40	6.39	2.0	2.0	2.0	Backhoe excavation x2	Nil			
22-Jun-09		09:25	Cloudy	<1	26.20	26.30	26.25	5.92	5.83	5.88	7.32	7.33	7.33	5.25	5.30	5.28	2.0	2.0	2.0	Backhoe excavation	Nil			
24-Jun-09		13:00	Cloudy	<1	28.40	28.50	28.45	5.53	5.51	5.52	7.21	7.21	7.21	6.41	6.37	6.39	2.0	2.0	2.0	Nil	Nil			
26-Jun-09		09:15	Cloudy	<1	27.20	27.20	27.20	5.64	5.68	5.66	7.32	7.32	7.32	5.22	5.26	5.24	4.4	4.8	4.6	Nil	Nil			
29-Jun-09		13:15	Fine	<1	28.40	28.30	28.35	5.42	5.46	5.44	7.22	7.22	7.22	6.17	6.20	6.19	2.0	2.0	2.0	Nil	Nil			
Hong Hoi Chee Hong Temple I-2		01-Jun-09	10:55	Cloudy	<1	25.40	25.30	25.35	6.58	6.56	6.57	7.44	7.44	7.44	5.27	5.30	5.29	2.0	2.0	2.0	Nil	Nil		
	03-Jun-09	-	-	-	-	-	-	-	-	-	-	-	-	-	-	-	-	-	-	Monitoring was cancelled due to thunderstorm warning	Nil			
	05-Jun-09	10:35	Cloudy	<1	26.50	26.50	26.50	6.08	6.06	6.07	7.27	7.27	7.27	5.27	5.23	5.25	8.5	8.0	8.3	Nil	The contractor had enhanced mitigation measures. Details can be referred to Appendix J.			
	08-Jun-09	10:41	Cloudy	<1	27.30	27.30	27.30	5.78	5.82	5.80	7.32	7.32	7.32	5.12	5.06	5.09	2.0	2.0	2.0	Nil	Nil			
	10-Jun-09	10:39	Cloudy	<1	27.40	27.40	27.40	6.43	6.47	6.45	7.25	7.25	7.25	5.21	5.18	5.20	3.6	4.4	4.0	Nil	Nil			
	12-Jun-09	10:58	Cloudy	<1	26.40	26.40	26.40	6.27	6.27	6.27	7.22	7.22	7.22	5.16	5.20	5.18	2.0	2.0	2.0	Nil	Nil			
	15-Jun-09	10:51	Sunny	<1	27.70	27.70	27.70	6.53	6.47	6.50	7.32	7.35	7.34	5.17	5.25	5.21	2.0	2.0	2.0	Nil	Nil			
	17-Jun-09	12:00	Sunny	<1	27.40	27.40	27.40	6.63	6.65	6.64	7.26	7.26	7.26	4.33	4.30	4.32	2.0	2.0	2.0	Nil	Nil			
	19-Jun-09	10:48	Cloudy	<1	26.40	26.40	26.40	5.82	5.80	5.81	7.20	7.20	7.20	5.27	5.20	5.24	2.0	2.0	2.0	Nil	Nil			
	22-Jun-09	11:32	Cloudy	<1	25.30	25.30	25.30	6.07	6.06	6.07	7.30	7.30	7.30	5.32	5.27	5.30	2.0	2.0	2.0	Nil	Nil			
	24-Jun-09	14:37	Cloudy	<1	28.50	28.50	28.50	5.28	5.26	5.27	7.22	7.25	7.24	5.42	5.38	5.40	2.0	2.0	2.0	Nil	Nil			
	26-Jun-09	10:37	Cloudy	<1	27.40	27.30	27.35	5.36	5.34	5.35	7.34	7.34	7.34	5.27	5.26	5.27	4.3	4.8	4.6	Nil	Nil			
	29-Jun-09	14:46	Fine	<1	28.40	28.40	28.40	5.42	5.41	5.42	7.42	7.42	7.42	5.33	5.39	5.36	2.0	2.0	2.0	Nil	Nil			
	Hong Hoi Chee Hong Temple I-2-C	01-Jun-09	10:25	Cloudy	<1	25.30	25.30	25.30	6.53	6.57	6.55	7.44	7.44	7.44	5.36	5.33	5.35	2.0	2.0	2.0	Nil	Nil		
03-Jun-09		-	-	-	-	-	-	-	-	-	-	-	-	-	-	-	-	-	-	Monitoring was cancelled due to thunderstorm warning	Nil			
05-Jun-09		10:11	Cloudy	<1	26.50	26.50	26.50	6.03	6.07	6.05	7.27	7.27	7.27	5.31	5.27	5.29	3.6	3.7	3.7	Nil	Nil			
08-Jun-09		10:23	Cloudy	<1	27.30	27.30	27.30	6.02	6.07	6.05	7.32	7.32	7.32	5.22	5.18	5.20	2.0	2.0	2.0	Nil	Nil			
10-Jun-09		10:22	Cloudy	<1	27.40	27.40	27.40	6.38	6.42	6.40	7.25	7.25	7.25	5.44	5.46	5.45	4.2	3.9	4.1	Piling	Nil			
12-Jun-09		10:44	Cloudy	<1	26.50	26.50	26.50	6.12	6.15	6.14	7.22	7.22	7.22	5.23	5.26	5.25	2.0	2.0	2.0	Nil	Nil			
15-Jun-09		10:33	Sunny	<1	27.80	27.80	27.80	6.51	6.62	6.57	7.44	7.44	7.44	5.32	5.33	5.33	2.0	2.0	2.0	Nil	Nil			
17-Jun-09		11:25	Sunny	<1	27.50	27.60	27.55	6.55	6.62	6.59	7.27	7.27	7.27	4.42	4.53	4.48	2.0	2.0	2.0	Nil	Nil			
19-Jun-09		10:35	Cloudy	<1	26.50	26.50	26.50	5.96	5.98	5.97	7.22	7.22	7.22	5.32	5.33	5.33	2.0	2.0	2.0	Nil	Nil			
22-Jun-09		11:11	Cloudy	<1	25.40	25.50	25.45	6.02	5.92	5.97	7.30	7.30	7.30	5.43	5.44	5.44	2.0	2.0	2.0	Nil	Nil			
24-Jun-09		14:22	Cloudy	<1	28.50	28.50	28.50	5.25	5.23	5.24	7.22	7.22	7.22	5.61	5.65	5.63	2.0	2.0	2.0	Nil	Nil			
26-Jun-09		10:17	Cloudy	<1	27.50	27.50	27.50	5.43	5.44	5.44	7.33	7.32	7.33	5.41	5.44	5.43	3.2	3.4	3.3	Nil	Nil			
29-Jun-09		14:22	Fine	<1	28.30	28.30	28.30	5.33	5.34	5.34	7.42	7.42	7.42	5.42	5.46	5.44	2.0	2.0	2.0	Nil	Nil			
Squatters I-3		01-Jun-09	11:55	Cloudy	<1	26.20	26.20	26.20	6.32	6.44	6.38	7.40	7.40	7.40	3.31	3.28	3.30	2.0	2.0	2.0	Nil	Nil		
	03-Jun-09	-	-	-	-	-	-	-	-	-	-	-	-	-	-	-	-	-	-	Monitoring was cancelled due to thunderstorm warning	Nil			
	05-Jun-09	11:50	Cloudy	<1	26.70	26.70	26.70	6.28	6.24	6.26	7.33	7.33	7.33	3.35	3.32	3.34	2.0	2.3	2.2	Nil	Nil			
	08-Jun-09	16:55	Cloudy	<1	27.40	27.40	27.40	6.21	6.67	6.44	7.25	7.25	7.25	3.17	3.20	3.19	2.0	2.0	2.0	Nil	Nil			
	10-Jun-09	12:00	Cloudy	<1	27.30	27.30	27.30	6.33	6.36	6.35	7.24	7.24	7.24	3.35	3.31	3.33	5.0	5.4	5.2	Nil	Nil			
	12-Jun-09	15:42	Cloudy	<1	25.50	25.30	25.40	6.41	6.38															

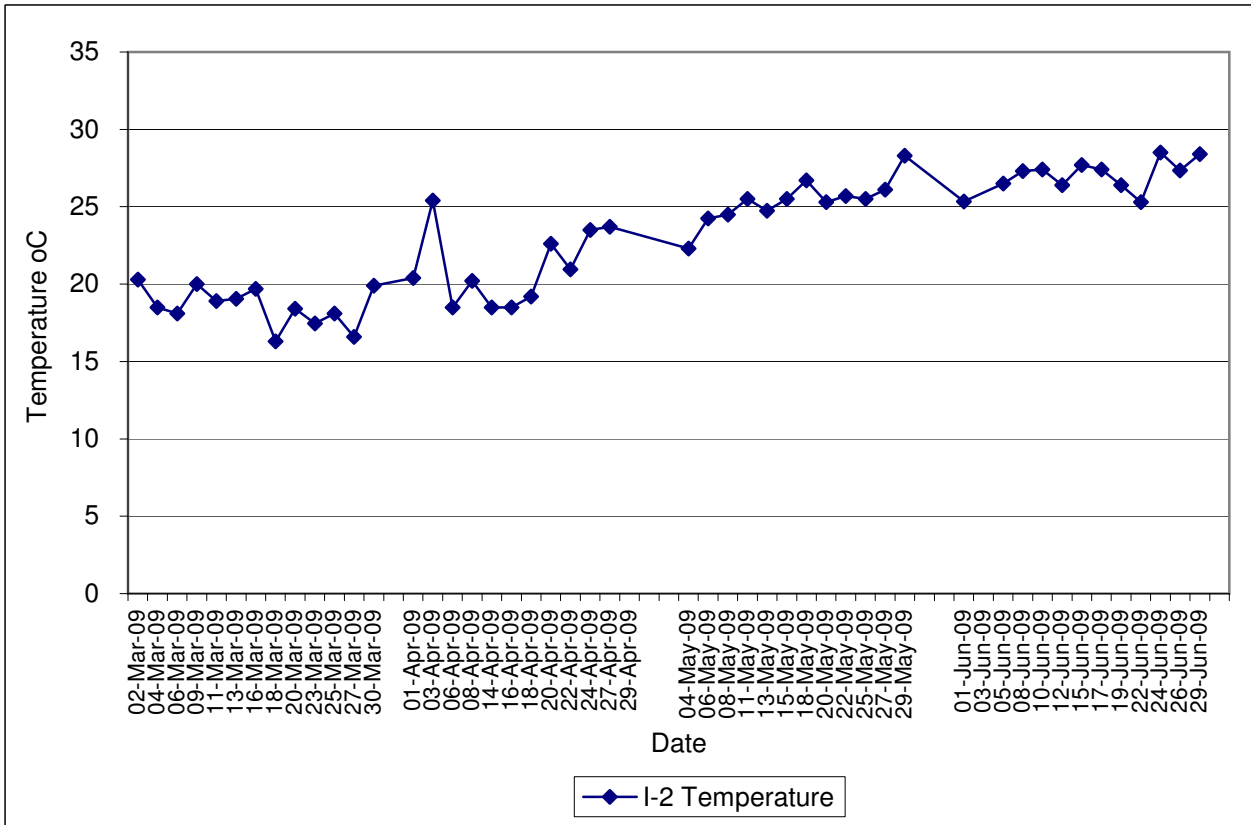
**Contract No. DC/2007/12 - Design and Construction of Tsuen Wan Drainage Tunnel
 Water Quality Results at Sik Sik Yuen Ho Fung College (I-1)
 Mar-09 to Jun-09**



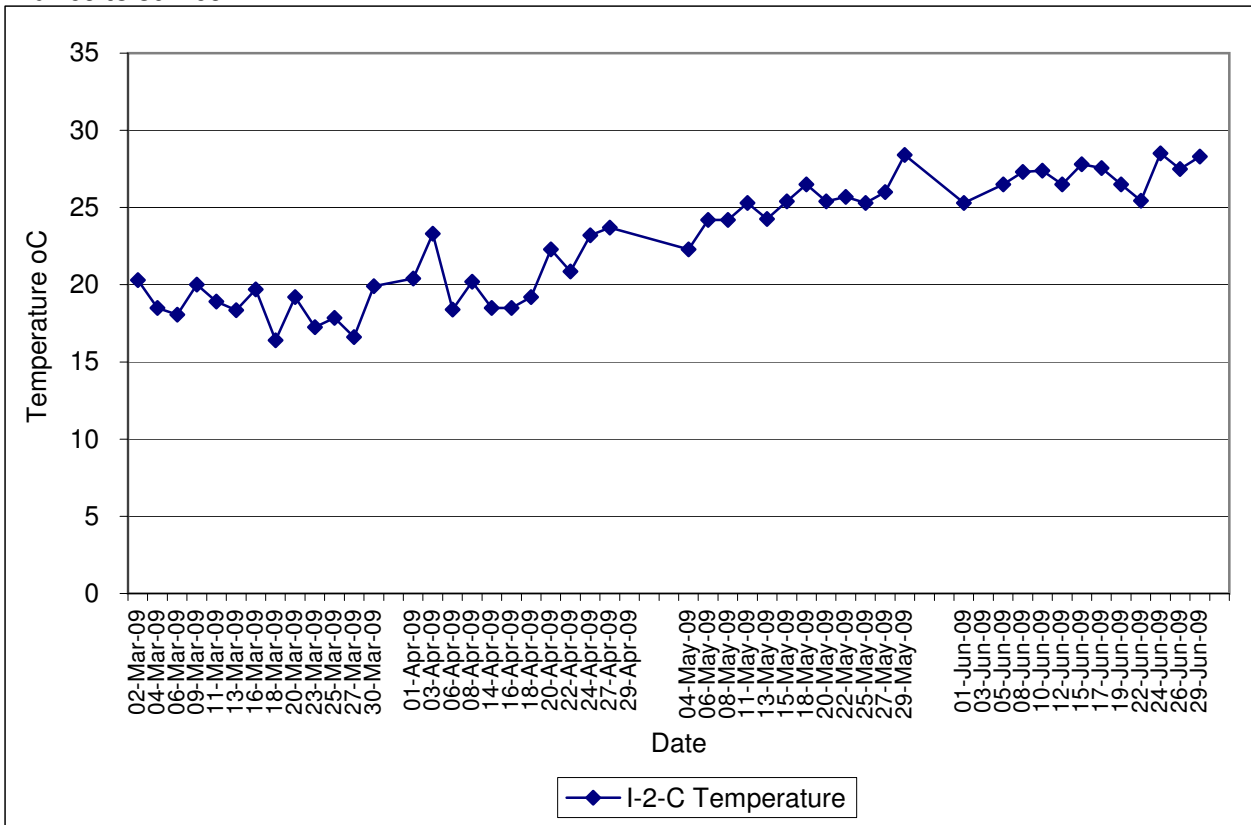
**Contract No. DC/2007/12 - Design and Construction of Tsuen Wan Drainage Tunnel
 Water Quality Results at Sik Sik Yuen Ho Fung College (I-1-C)
 Mar-09 to Jun-09**



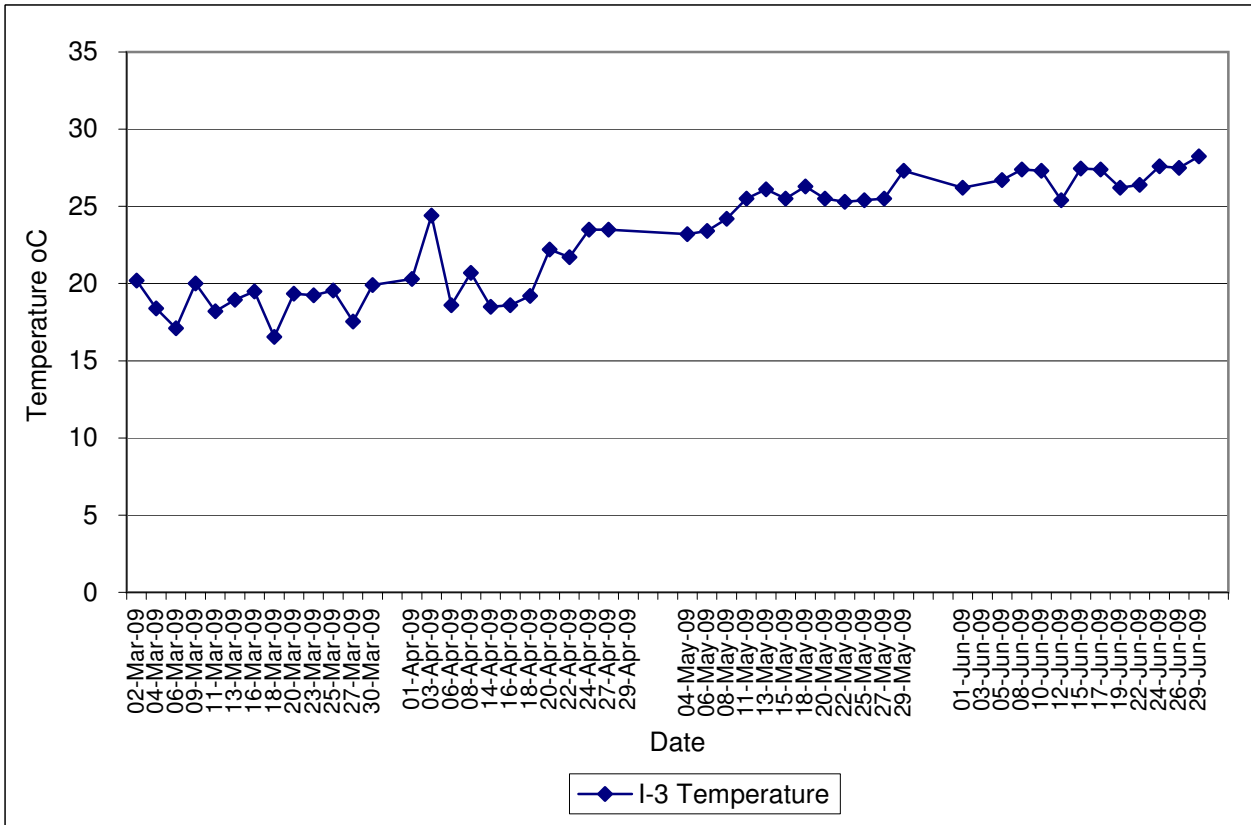
Contract No. DC/2007/12 - Design and Construction of Tsuen Wan Drainage Tunnel
Water Quality Results at Hong Hoi Chee Hong Temple (I-2)
Mar-09 to Jun-09



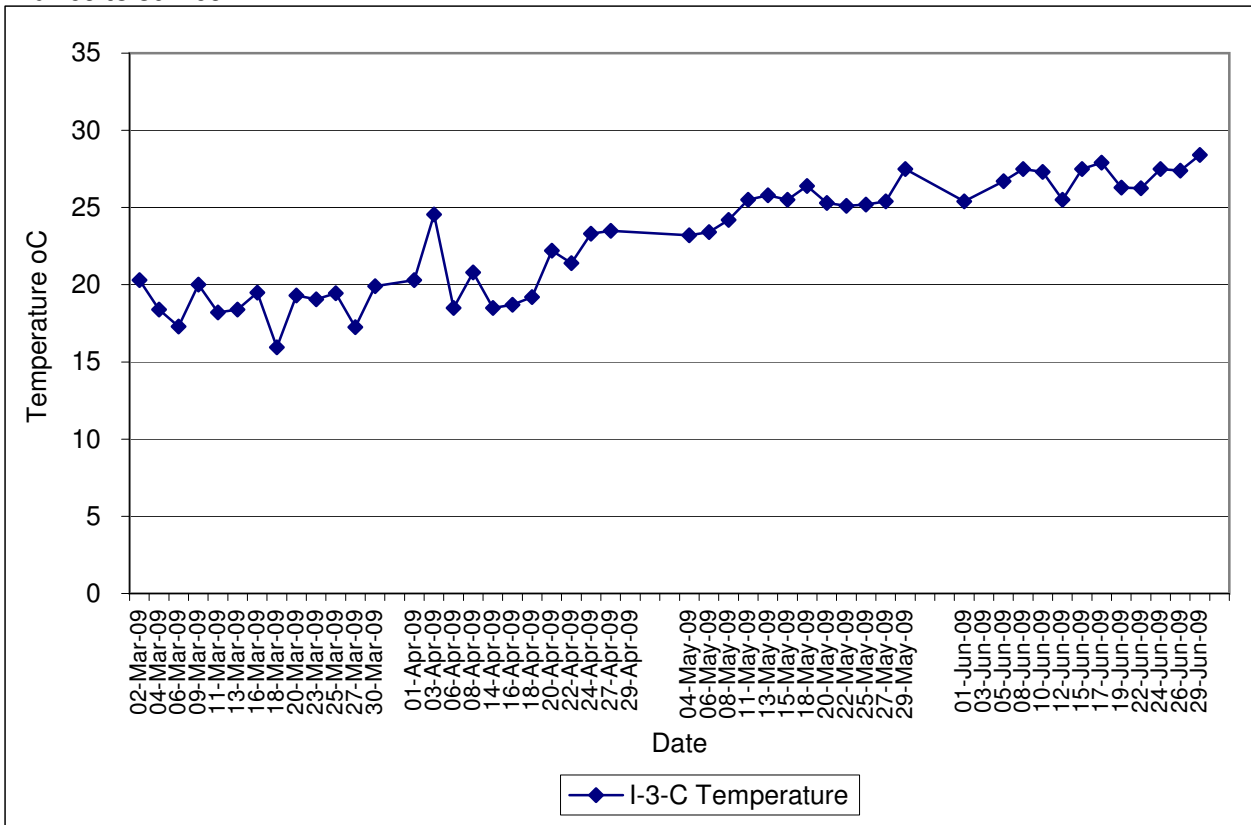
Contract No. DC/2007/12 - Design and Construction of Tsuen Wan Drainage Tunnel
Water Quality Results at Hong Hoi Chee Hong Temple (I-2-C)
Mar-09 to Jun-09



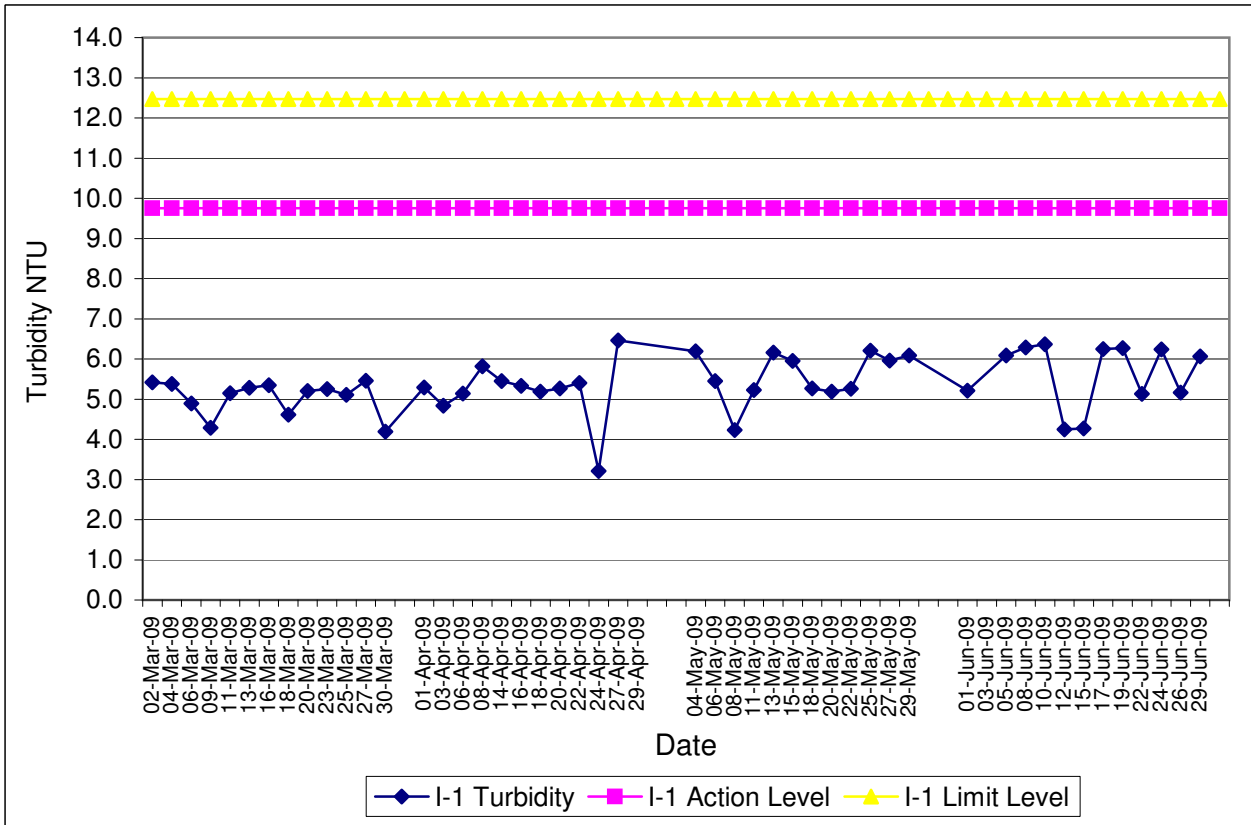
Contract No. DC/2007/12 - Design and Construction of Tsuen Wan Drainage Tunnel
Water Quality Results at Squatters (I-3)
Mar-09 to Jun-09



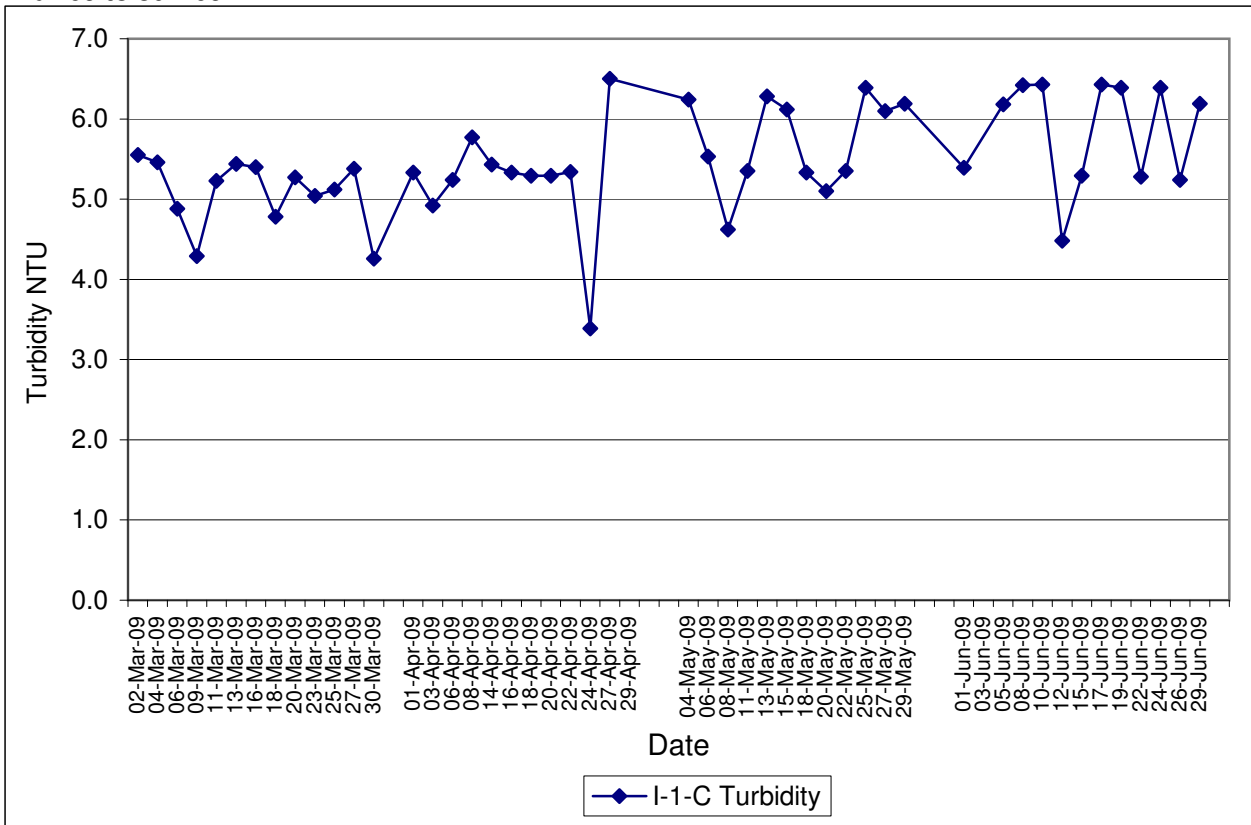
Contract No. DC/2007/12 - Design and Construction of Tsuen Wan Drainage Tunnel
Water Quality Results at Squatters (I-3-C)
Mar-09 to Jun-09



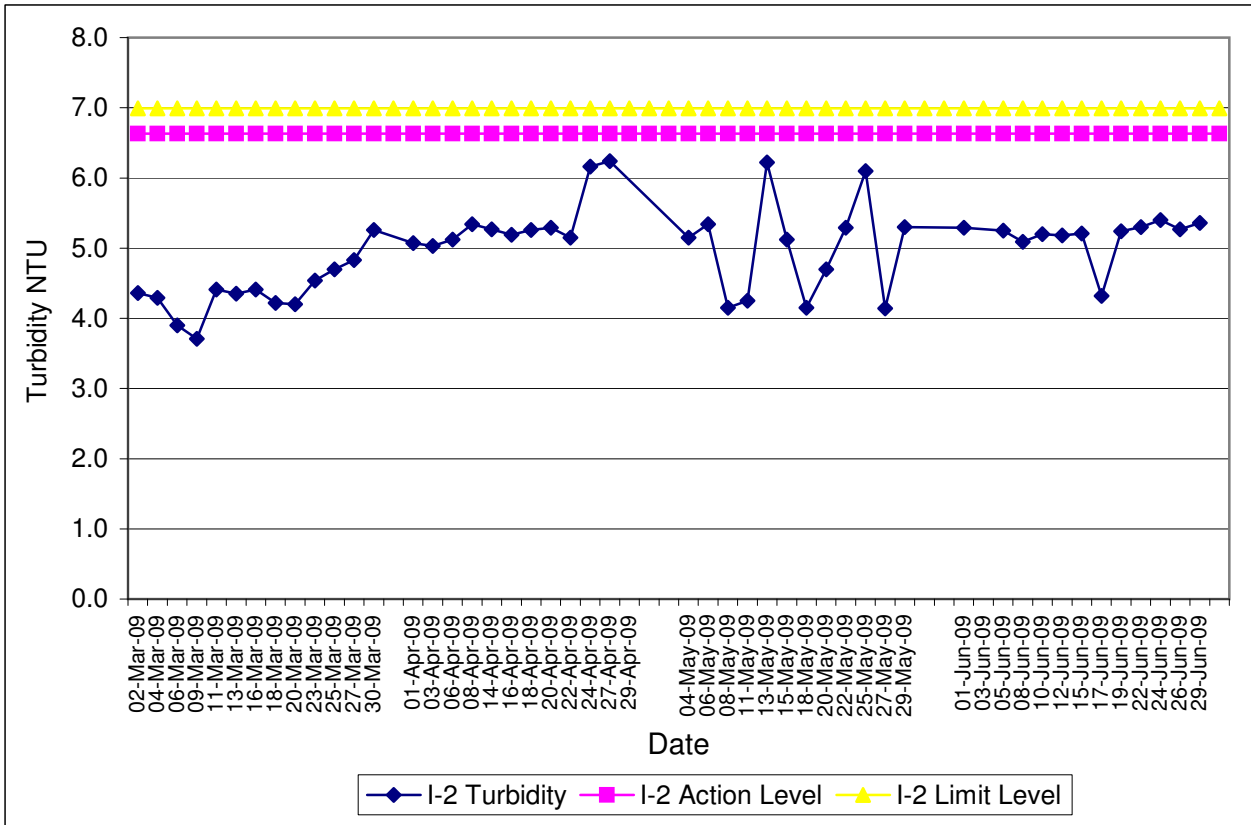
**Contract No. DC/2007/12 - Design and Construction of Tsuen Wan Drainage Tunnel
 Water Quality Results at Sik Sik Yuen Ho Fung College (I-1)
 Mar-09 to Jun-09**



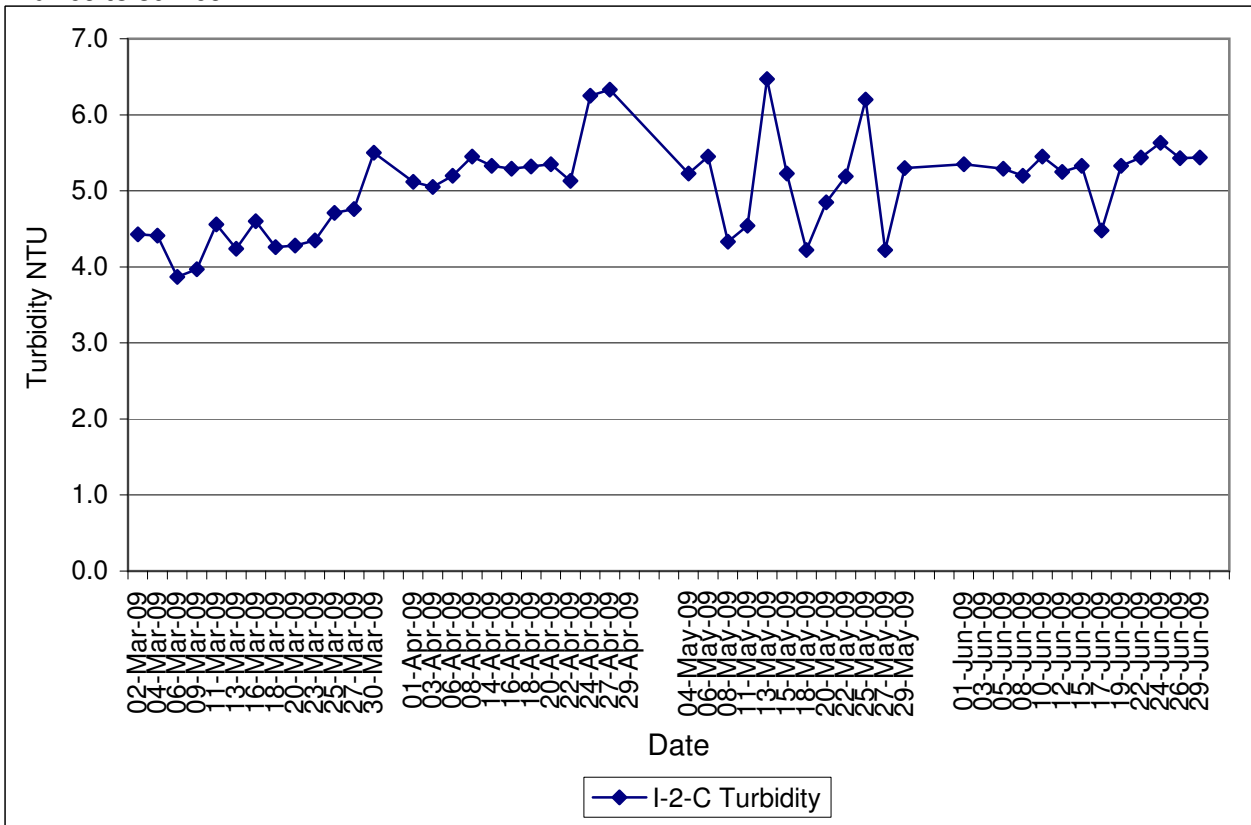
**Contract No. DC/2007/12 - Design and Construction of Tsuen Wan Drainage Tunnel
 Water Quality Results at Sik Sik Yuen Ho Fung College (I-1-C)
 Mar-09 to Jun-09**



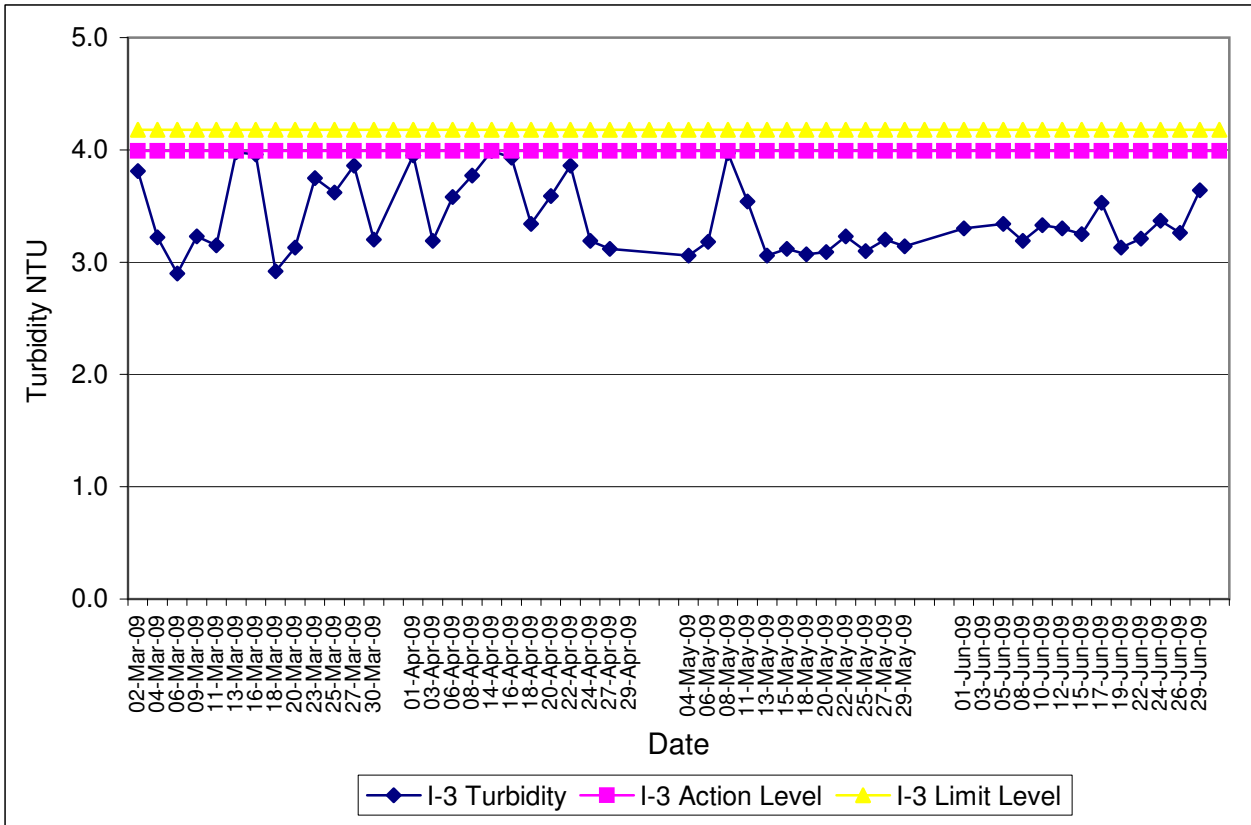
Contract No. DC/2007/12 - Design and Construction of Tsuen Wan Drainage Tunnel
Water Quality Results at Hong Hoi Chee Hong Temple (I-2)
Mar-09 to Jun-09



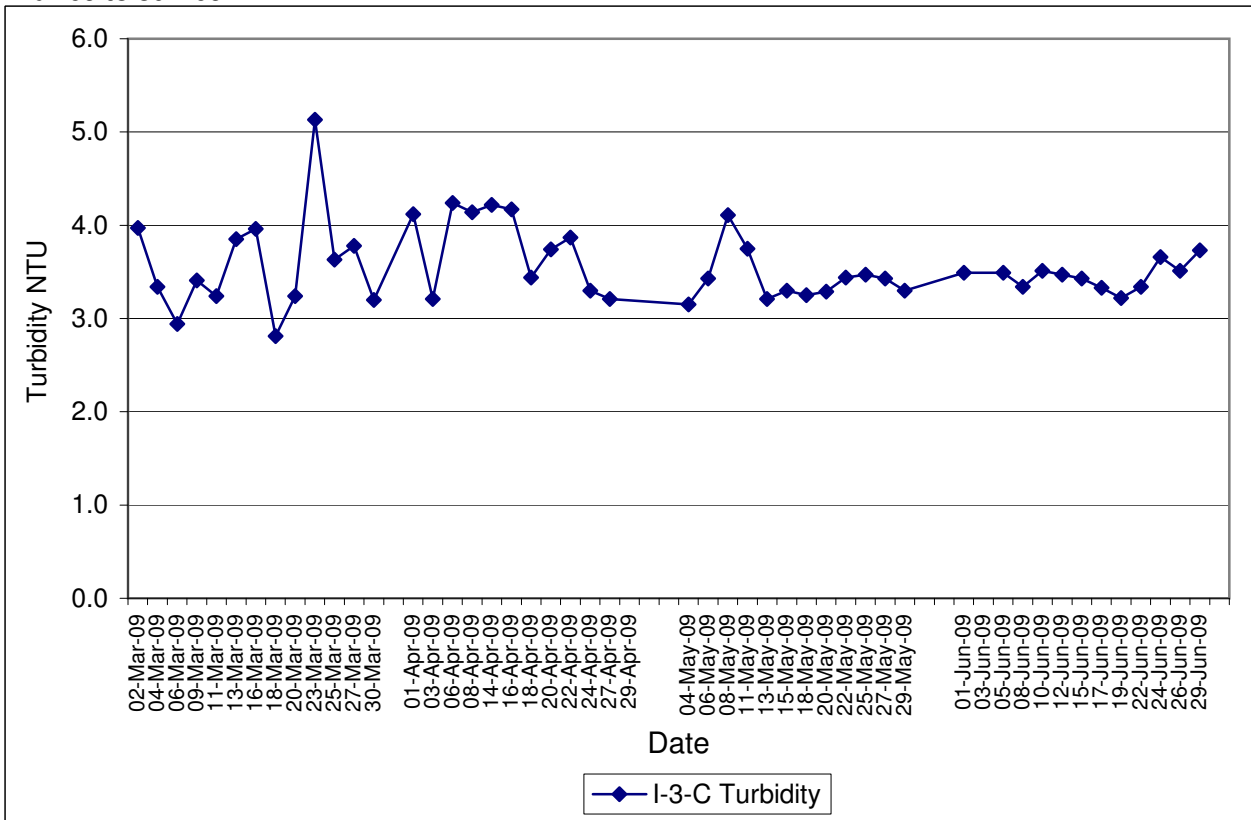
Contract No. DC/2007/12 - Design and Construction of Tsuen Wan Drainage Tunnel
Water Quality Results at Hong Hoi Chee Hong Temple (I-2-C)
Mar-09 to Jun-09



Contract No. DC/2007/12 - Design and Construction of Tsuen Wan Drainage Tunnel
Water Quality Results at Squatters (I-3)
Mar-09 to Jun-09

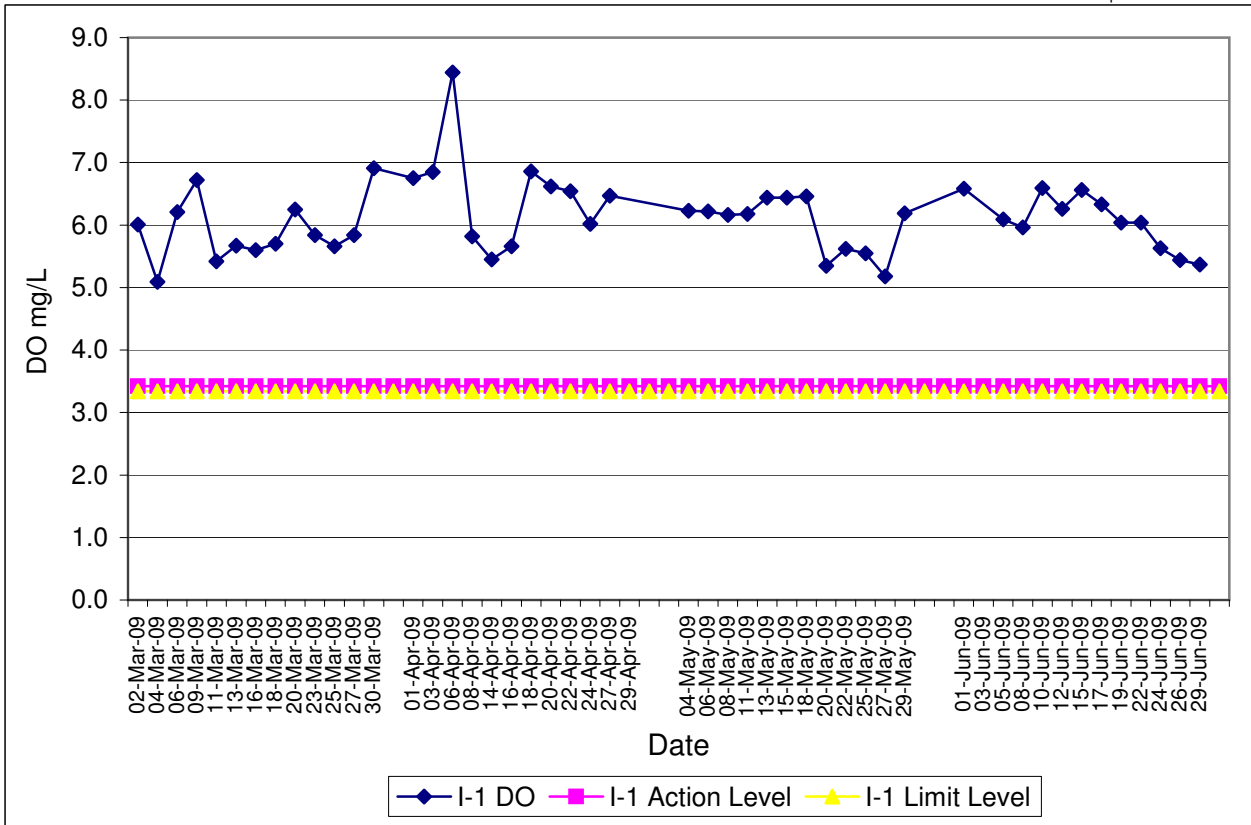


Contract No. DC/2007/12 - Design and Construction of Tsuen Wan Drainage Tunnel
Water Quality Results at Squatters (I-3-C)
Mar-09 to Jun-09

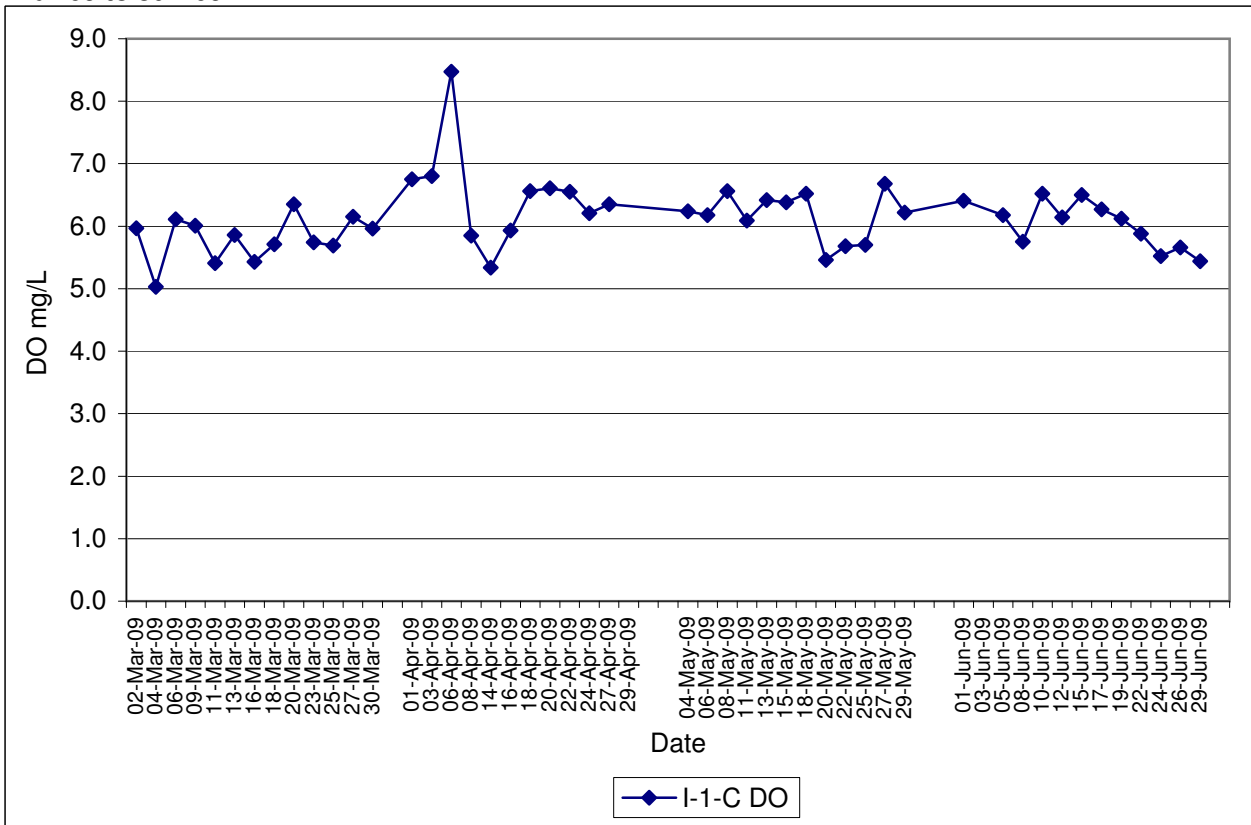


Contract No. DC/2007/12 - Design and Construction of Tsuen Wan Drainage Tunnel
Water Quality Results at Sik Sik Yuen Ho Fung College (I-1)
Mar-09 to Jun-09

Note: Exceedances of Action / Limit Levels occur when the levels of DO are below the respective limit levels.

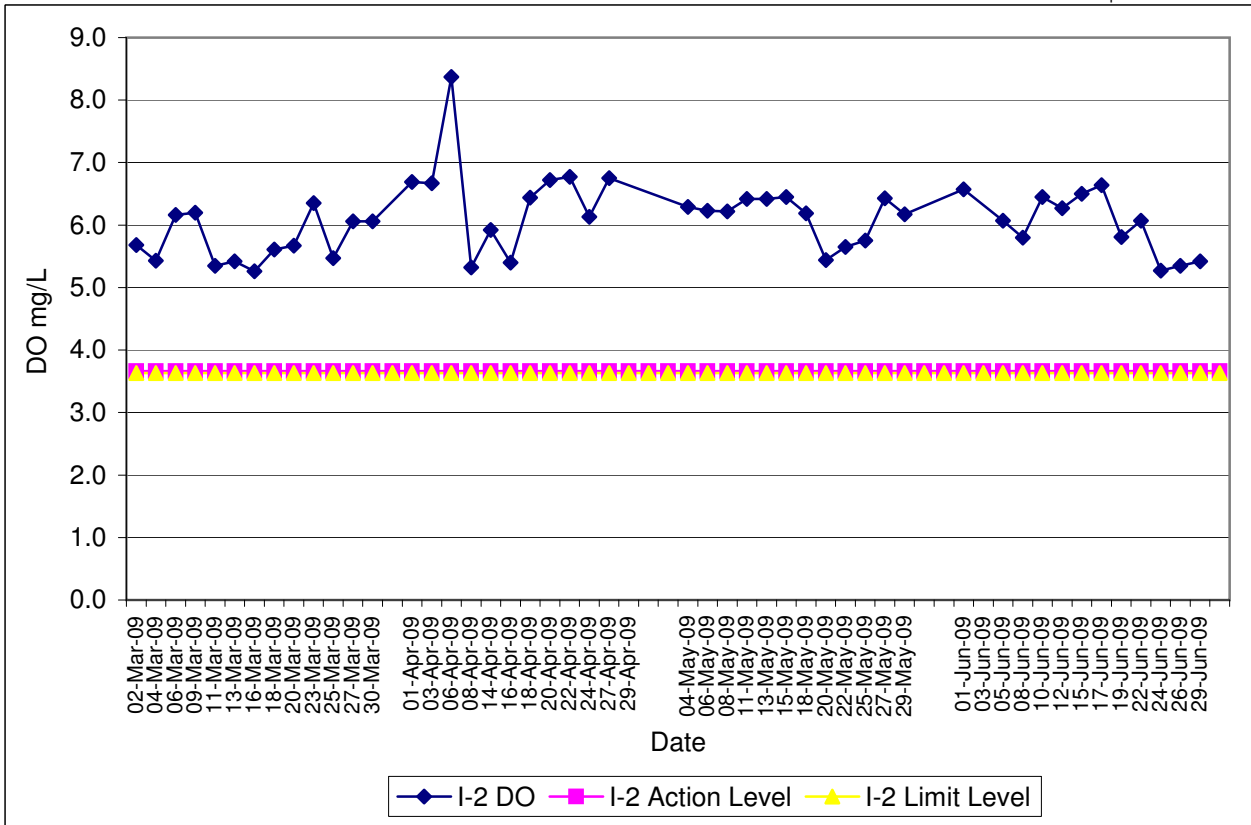


Contract No. DC/2007/12 - Design and Construction of Tsuen Wan Drainage Tunnel
Water Quality Results at Sik Sik Yuen Ho Fung College (I-1-C)
Mar-09 to Jun-09

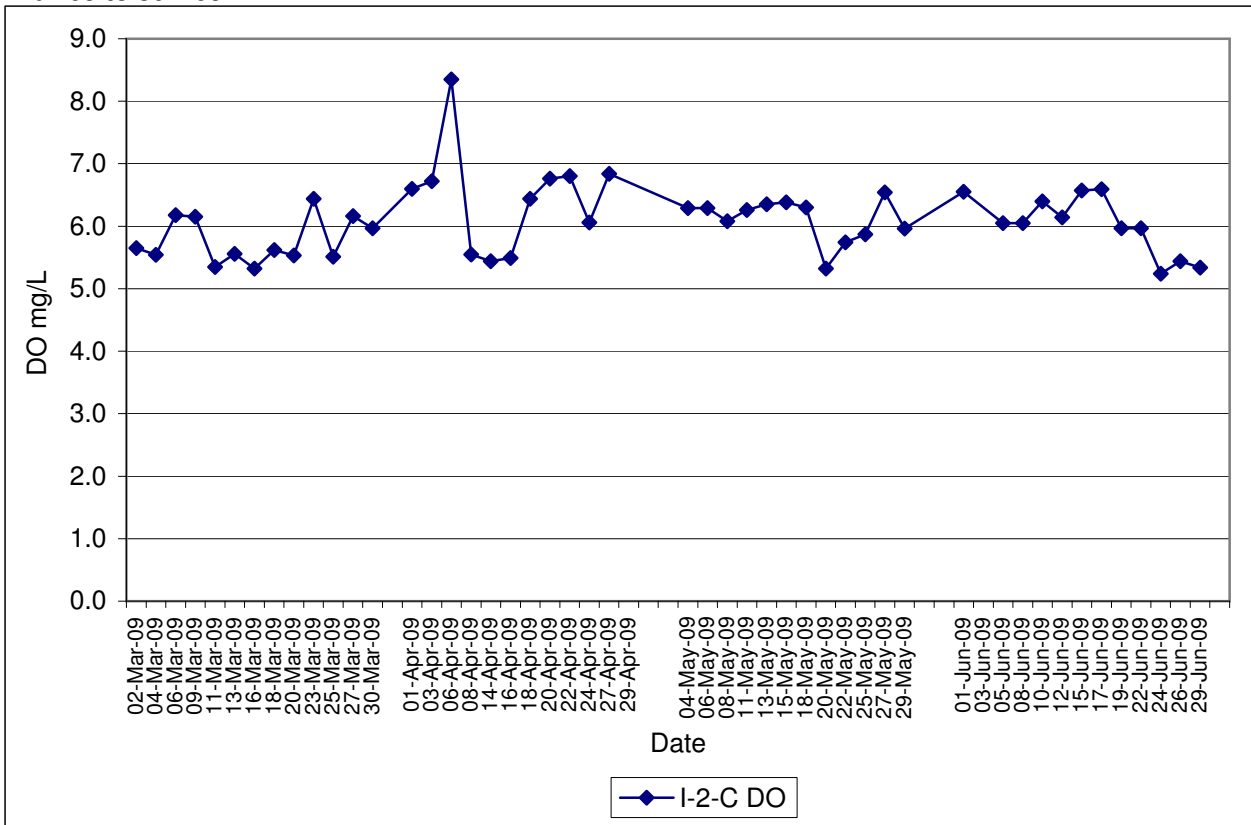


Contract No. DC/2007/12 - Design and Construction of Tsuen Wan Drainage Tunnel
Water Quality Results at Hong Hoi Chee Hong Temple (I-2)
Mar-09 to Jun-09

Note: Exceedances of Action / Limit Levels occur when the levels of DO are below the respective limit levels.

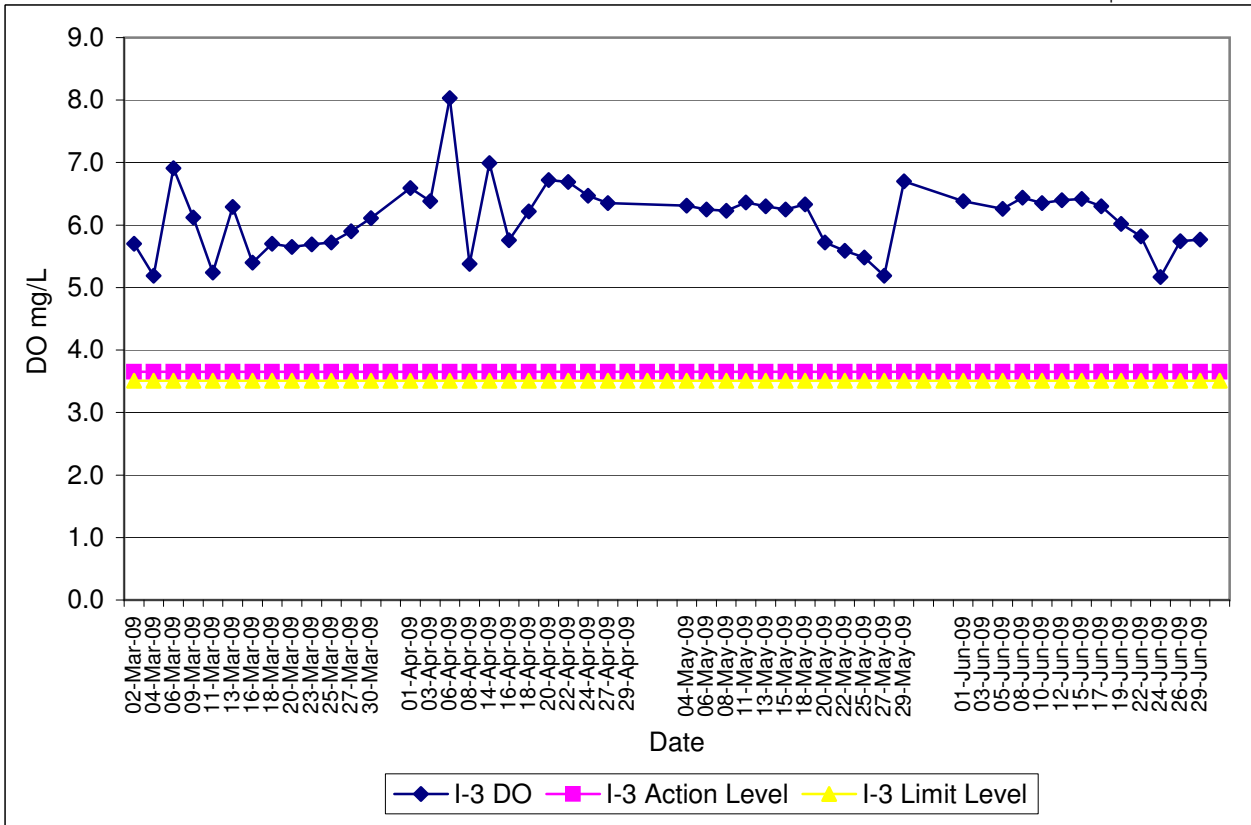


Contract No. DC/2007/12 - Design and Construction of Tsuen Wan Drainage Tunnel
Water Quality Results at Hong Hoi Chee Hong Temple (I-2-C)
Mar-09 to Jun-09

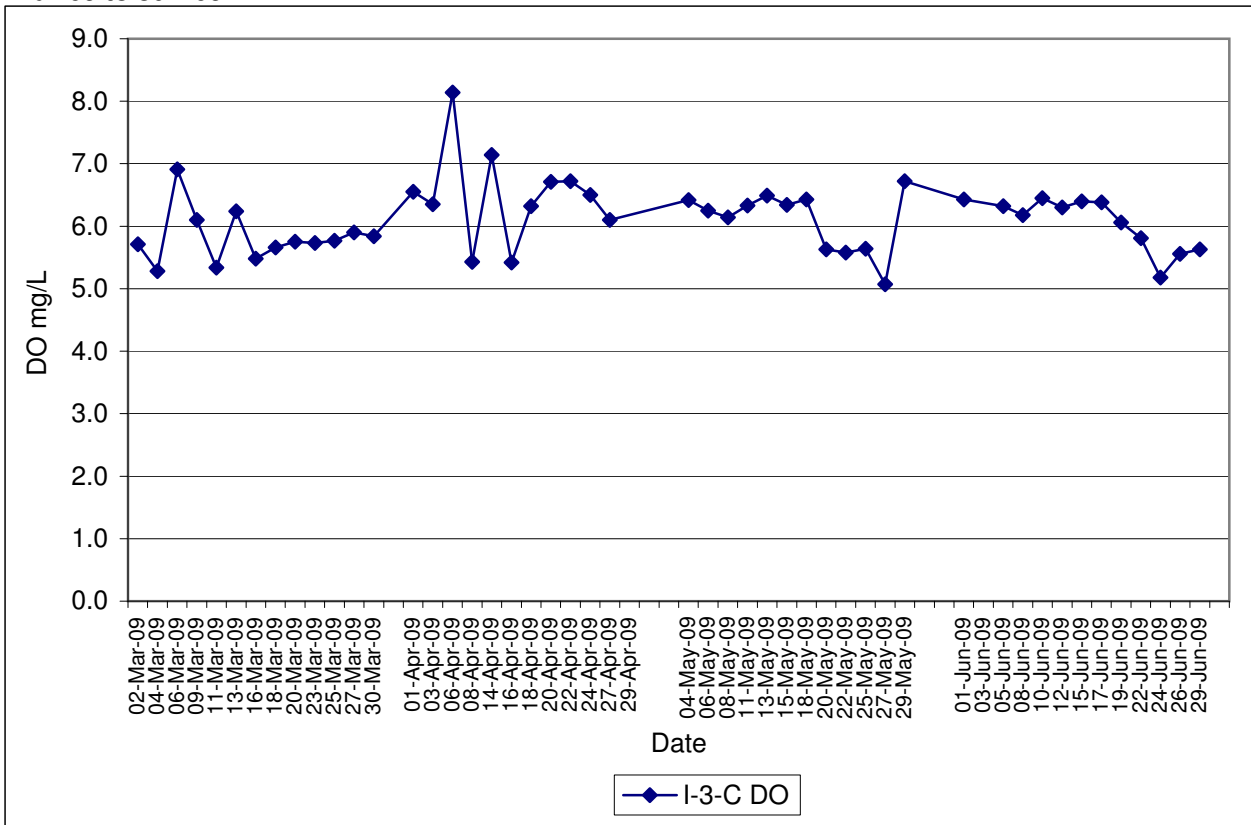


Contract No. DC/2007/12 - Design and Construction of Tsuen Wan Drainage Tunnel
Water Quality Results at Squatters (I-3)
Mar-09 to Jun-09

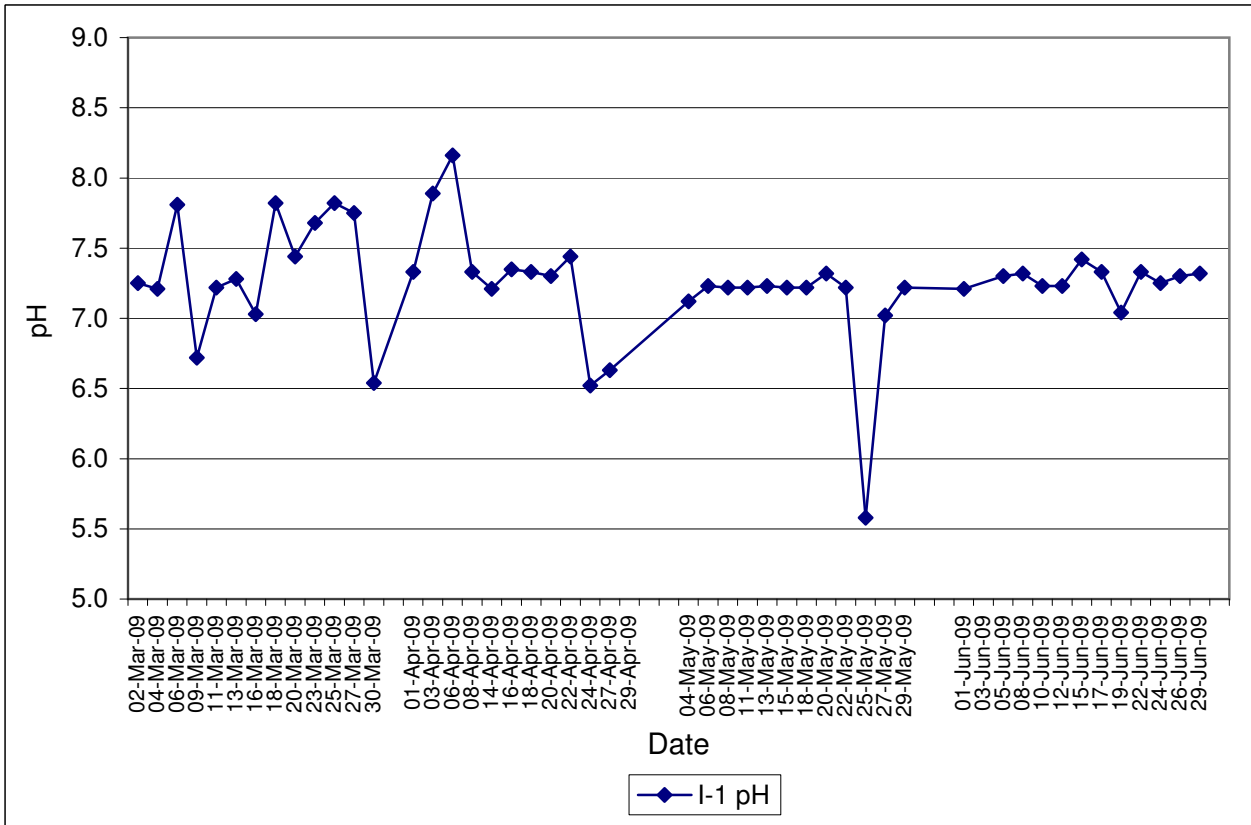
Note: Exceedances of Action / Limit Levels occur when the levels of DO are below the respective limit levels.



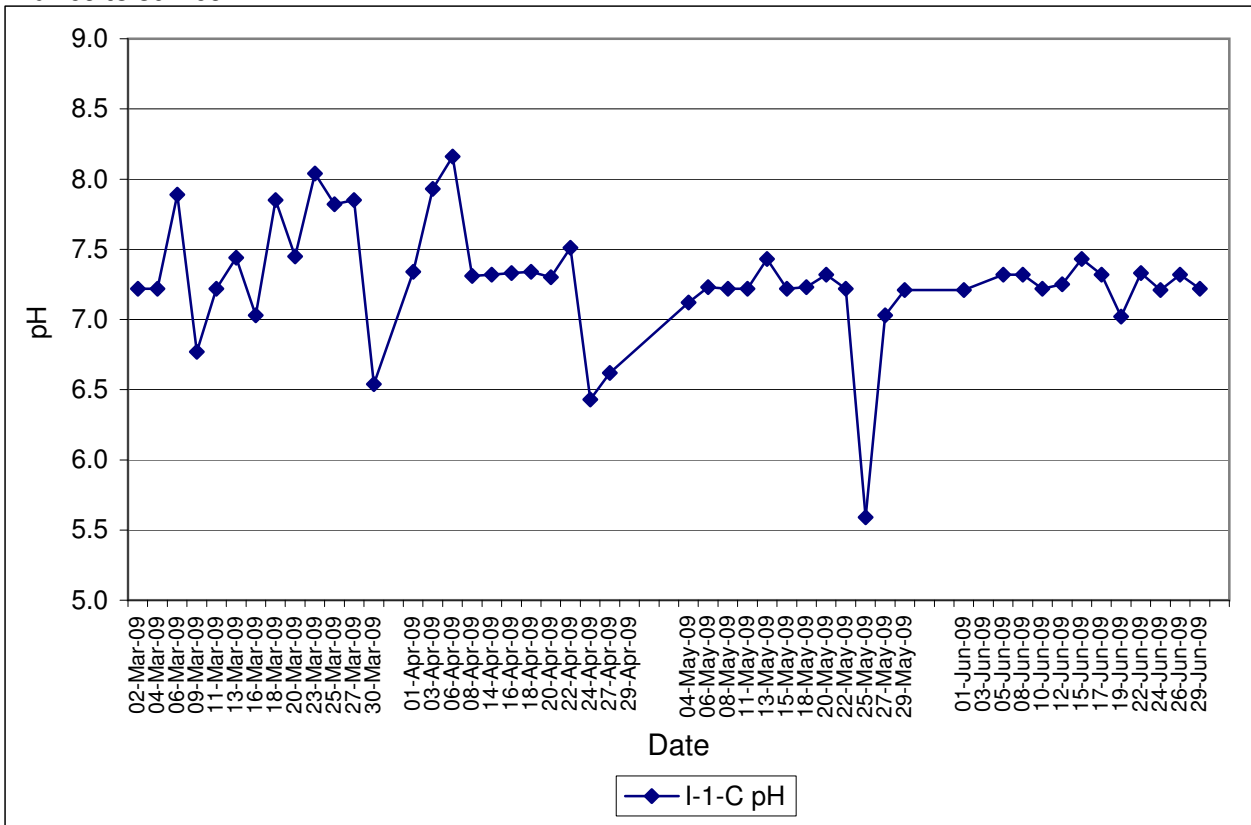
Contract No. DC/2007/12 - Design and Construction of Tsuen Wan Drainage Tunnel
Water Quality Results at Squatters (I-3-C)
Mar-09 to Jun-09



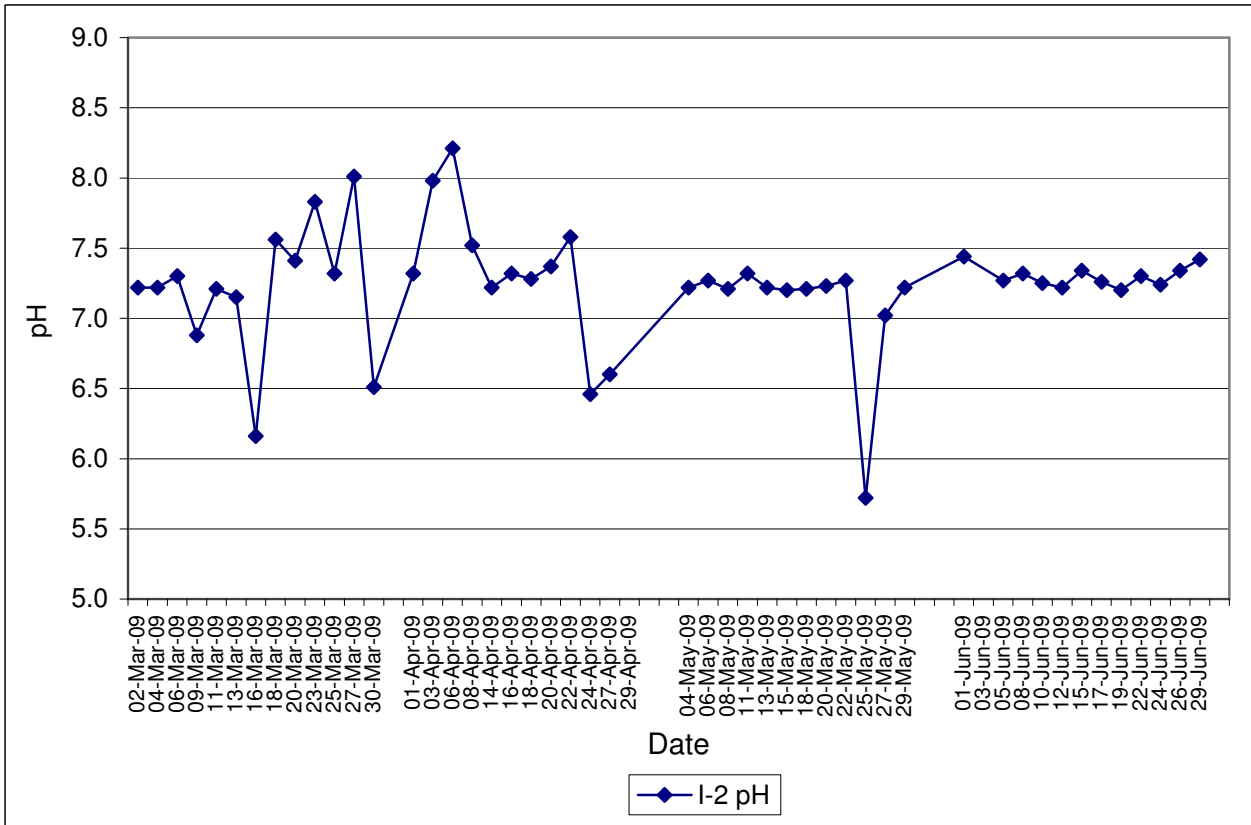
**Contract No. DC/2007/12 - Design and Construction of Tsuen Wan Drainage Tunnel
 Water Quality Results at Sik Sik Yuen Ho Fung College (I-1)
 Mar-09 to Jun-09**



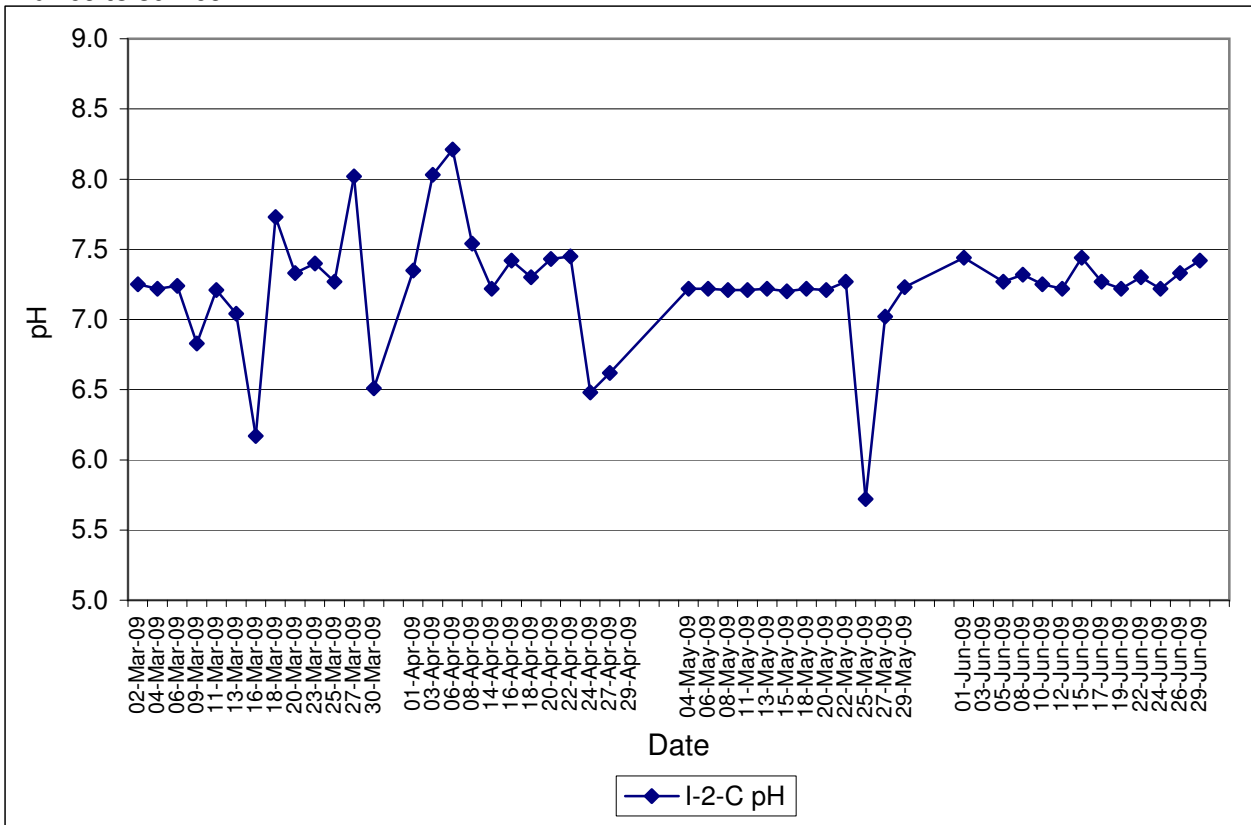
**Contract No. DC/2007/12 - Design and Construction of Tsuen Wan Drainage Tunnel
 Water Quality Results at Sik Sik Yuen Ho Fung College (I-1-C)
 Mar-09 to Jun-09**



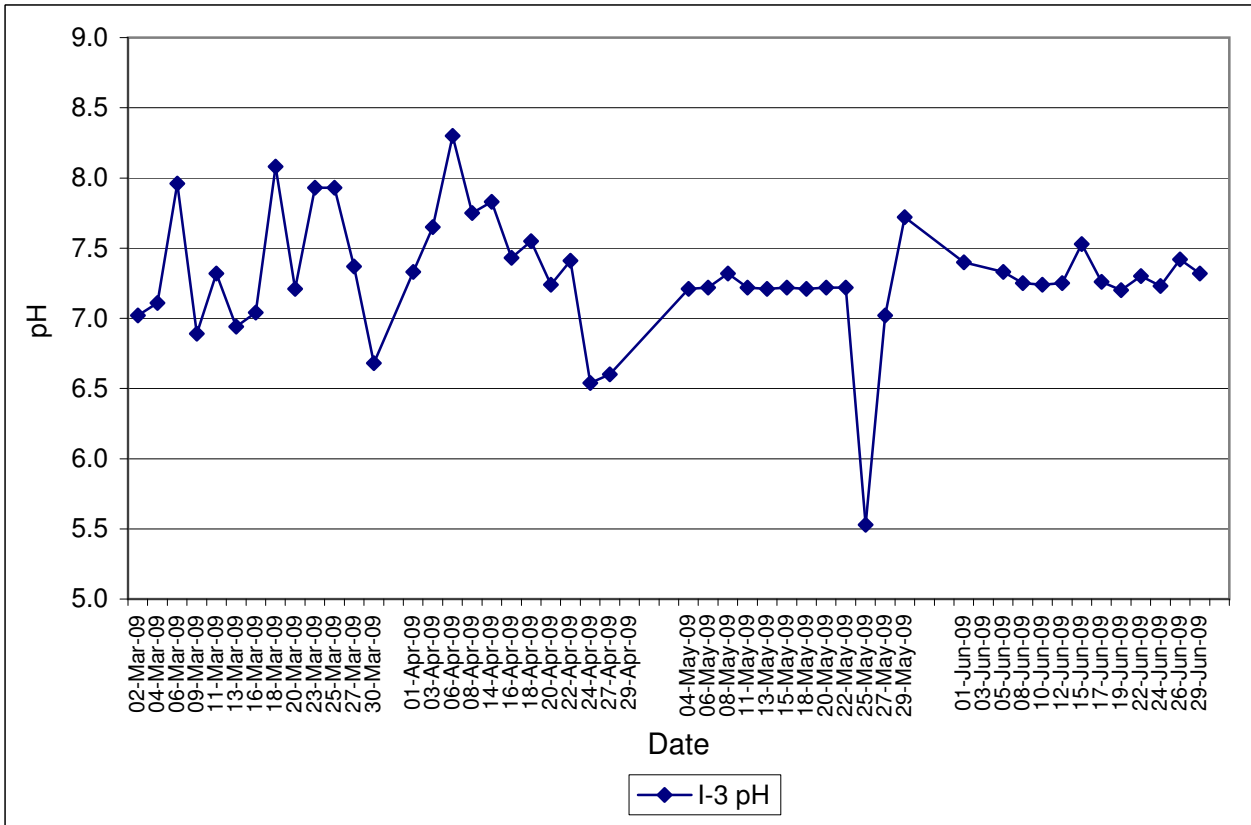
**Contract No. DC/2007/12 - Design and Construction of Tsuen Wan Drainage Tunnel
 Water Quality Results at Hong Hoi Chee Hong Temple (I-2)
 Mar-09 to Jun-09**



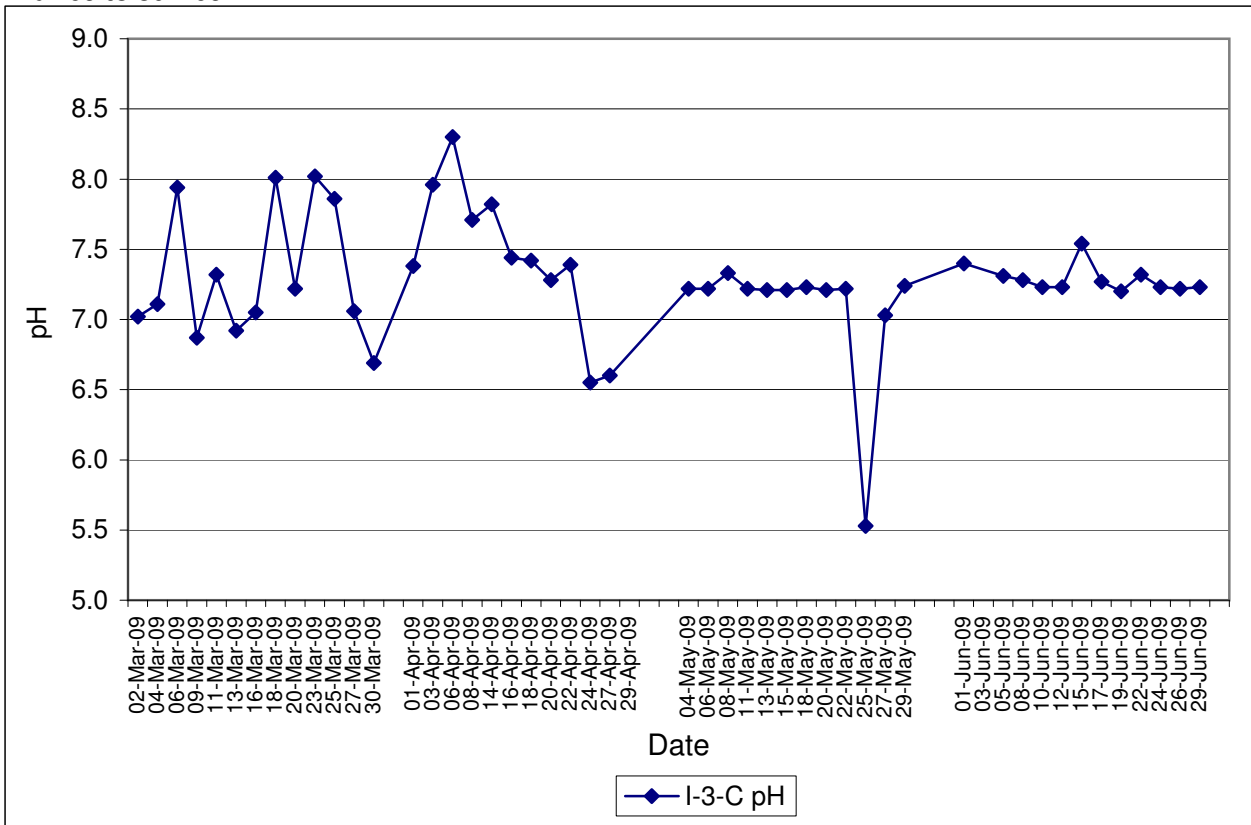
**Contract No. DC/2007/12 - Design and Construction of Tsuen Wan Drainage Tunnel
 Water Quality Results at Hong Hoi Chee Hong Temple (I-2-C)
 Mar-09 to Jun-09**



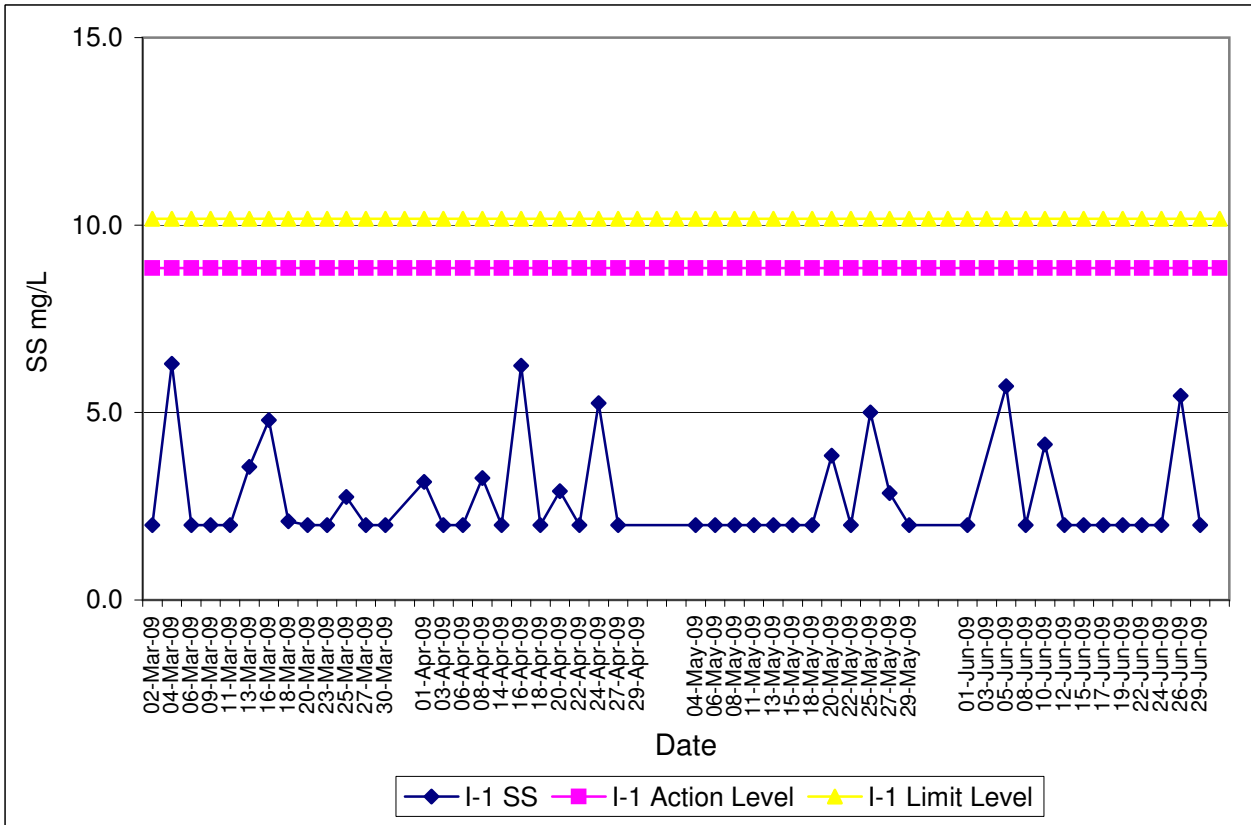
Contract No. DC/2007/12 - Design and Construction of Tsuen Wan Drainage Tunnel
Water Quality Results at Squatters (I-3)
Mar-09 to Jun-09



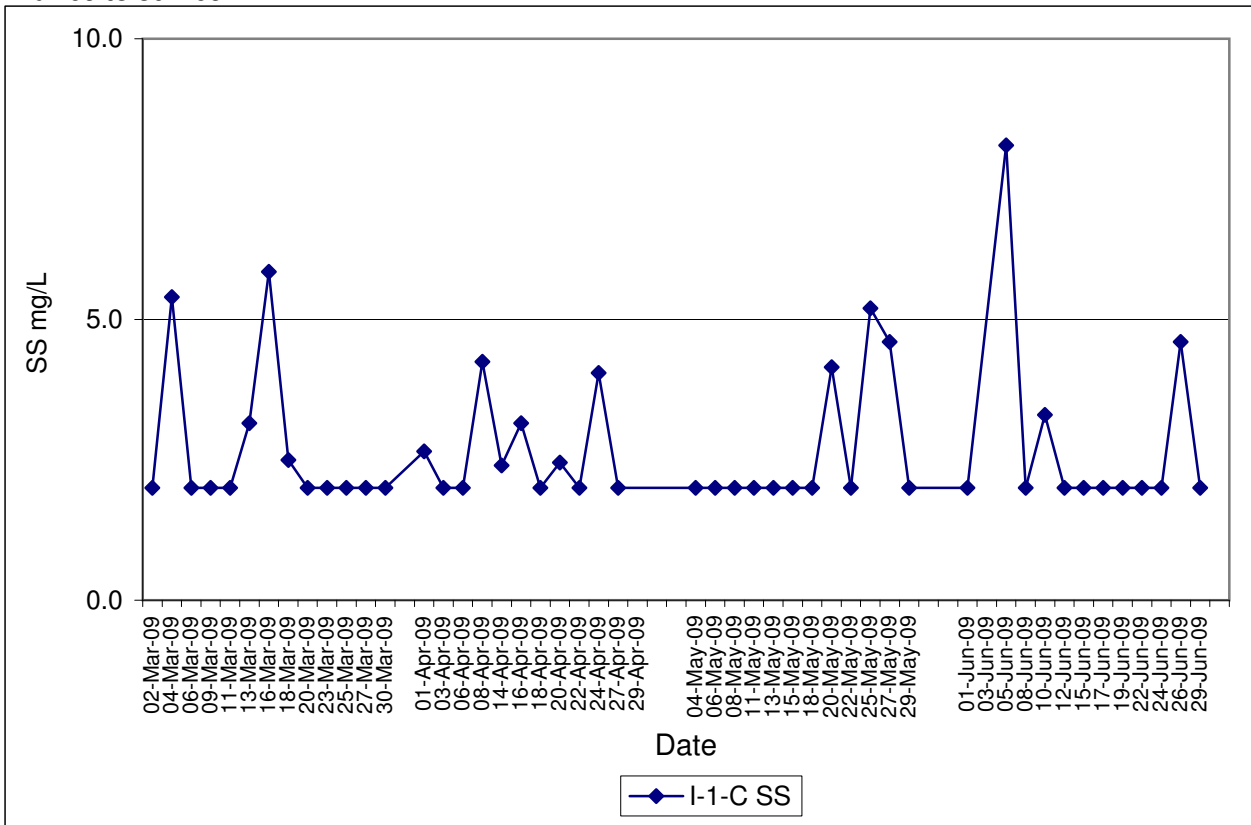
Contract No. DC/2007/12 - Design and Construction of Tsuen Wan Drainage Tunnel
Water Quality Results at Squatters (I-3-C)
Mar-09 to Jun-09



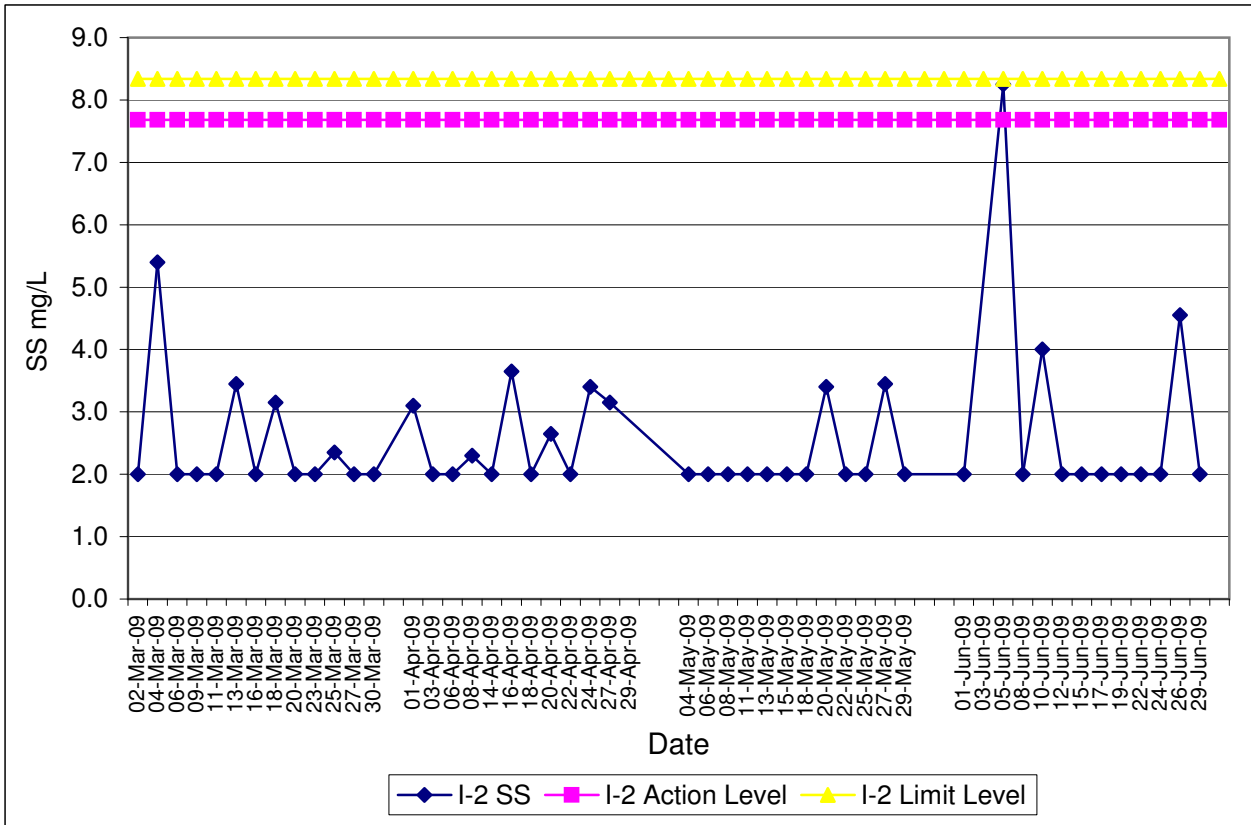
**Contract No. DC/2007/12 - Design and Construction of Tsuen Wan Drainage Tunnel
 Water Quality Results at Sik Sik Yuen Ho Fung College (I-1)
 Mar-09 to Jun-09**



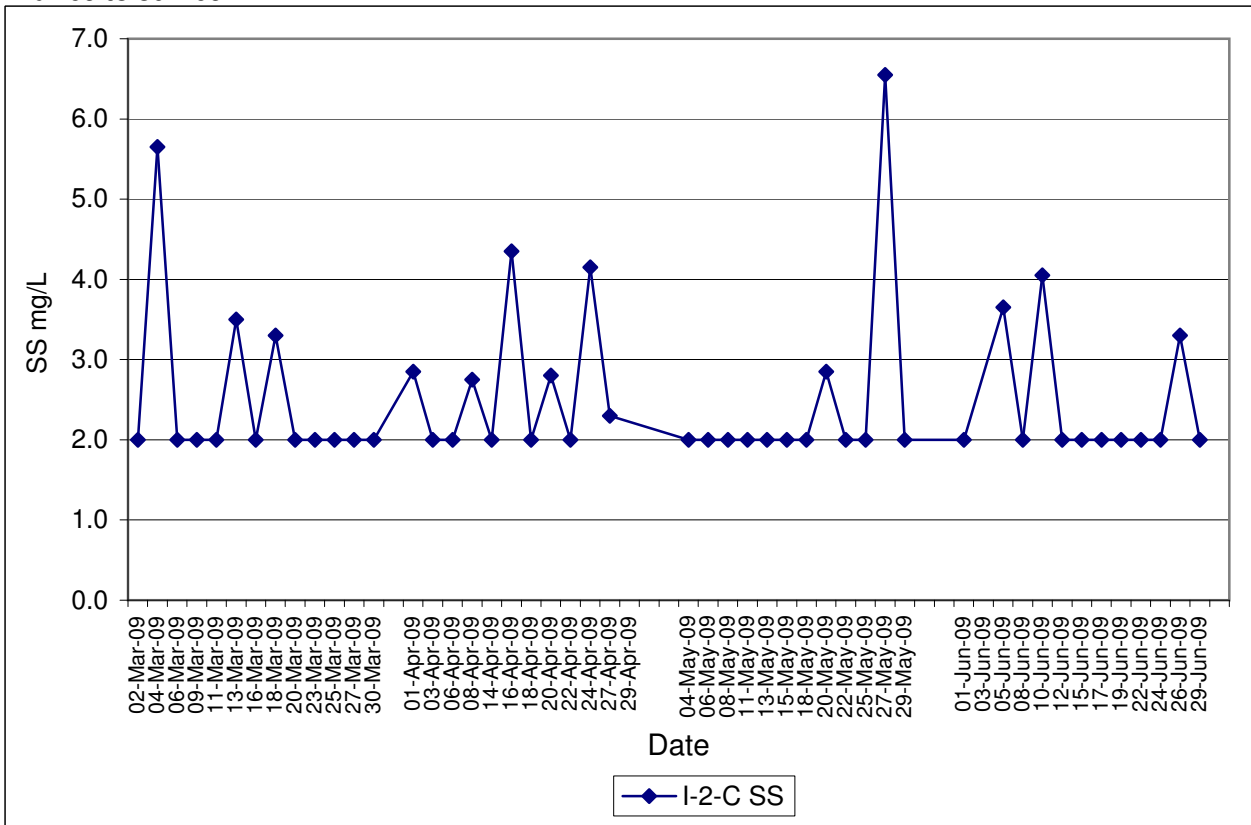
**Contract No. DC/2007/12 - Design and Construction of Tsuen Wan Drainage Tunnel
 Water Quality Results at Sik Sik Yuen Ho Fung College (I-1-C)
 Mar-09 to Jun-09**



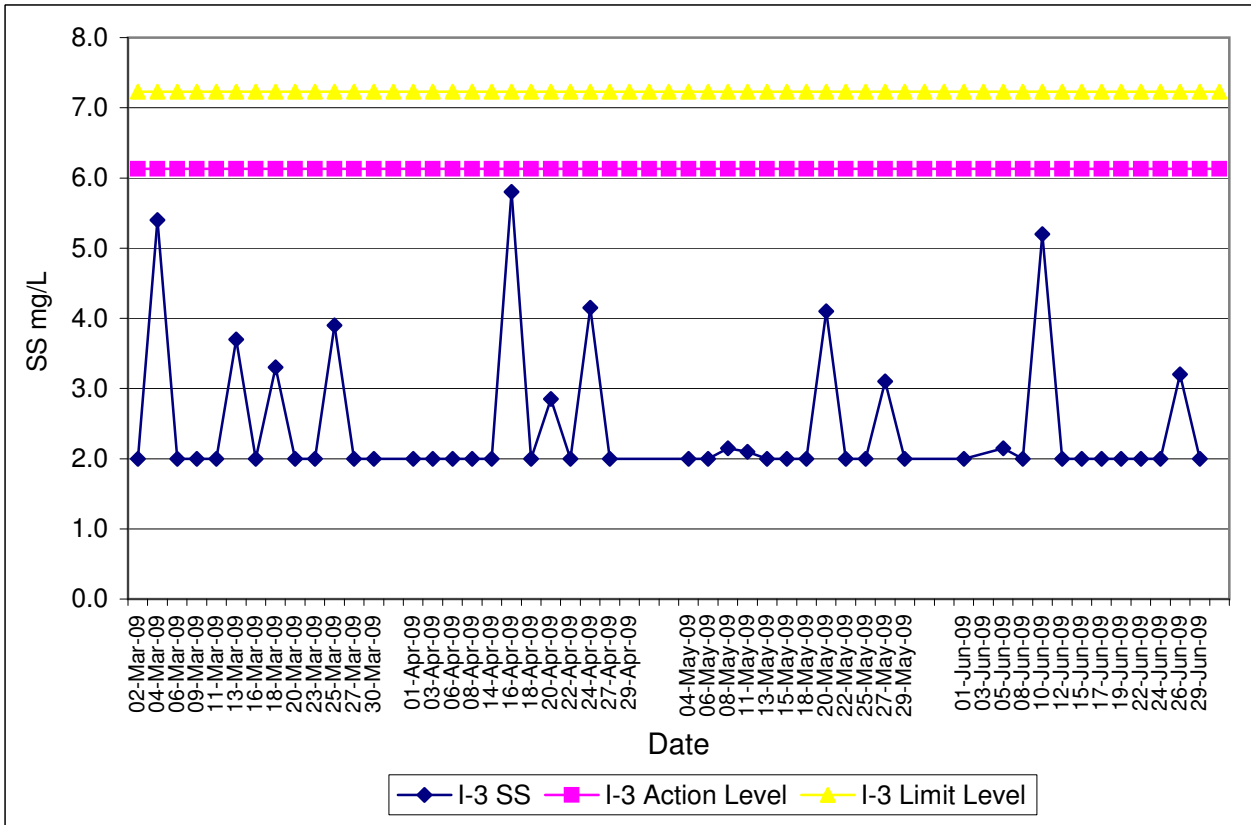
Contract No. DC/2007/12 - Design and Construction of Tsuen Wan Drainage Tunnel
Water Quality Results at Hong Hoi Chee Hong Temple (I-2)
Mar-09 to Jun-09



Contract No. DC/2007/12 - Design and Construction of Tsuen Wan Drainage Tunnel
Water Quality Results at Hong Hoi Chee Hong Temple (I-2-C)
Mar-09 to Jun-09



Contract No. DC/2007/12 - Design and Construction of Tsuen Wan Drainage Tunnel
Water Quality Results at Squatters (I-3)
Mar-09 to Jun-09



Contract No. DC/2007/12 - Design and Construction of Tsuen Wan Drainage Tunnel
Water Quality Results at Squatters (I-3-C)
Mar-09 to Jun-09

