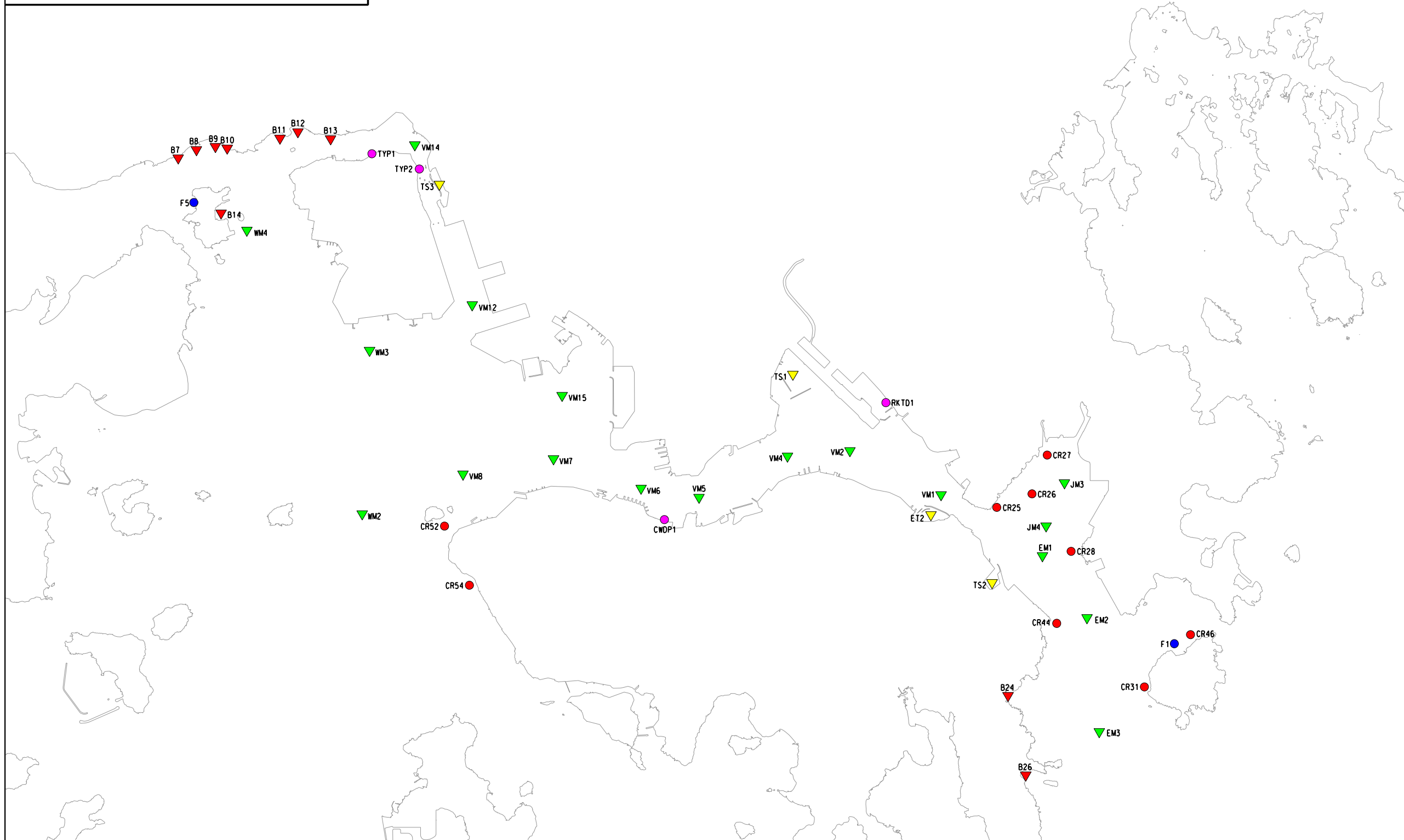


LOCATIONS OF WATER QUALITY MONITORING STATIONS
(47 NOS.)



LEGEND

- | | | | |
|---|---|---|--|
| <ul style="list-style-type: none"> ● FISH CULTURE ZONES F1 - TUNG LUNG CHAU F5 - MA WAN ● CORALS CR25 - JUNK BAY - SOUTH EAST CR26 - JUNK BAY CR27 - JUNK BAY CR28 - JUNK BAY - JUNK ISLAND CR31 - TUNG LUNG CHAU WEST CR44 - CAPE COLLINSON CR46 - TUNG LUNG CHAU NORTH CR52 - GREEN ISLAND CR54 - SANDY BAY | <ul style="list-style-type: none"> ▼ GAZETTED BEACHES B7 - ANGLER'S BB - GEMINI B9 - HOI MEI WAN B10 - CASAM B11 - LIDO B12 - TING KAU B13 - APPROACH B14 - MA WAN TUNG WAN B24 - BIG WAVE BAY B26 - SHEK O ▼ TYPHOON SHELTERS ET2 - SHAU KEI WAN TS1 - TO KWA WAN TS2 - CHAI WAN TS3 - GIN DRINKERS BAY | <ul style="list-style-type: none"> ● PROMENADE / RECREATION TYP1 - TSING YI NORTHERN PROMENADE TYP2 - TSING YI EASTERN PROMENADE CWDP1 - CENTRAL AND WESTERN DISTRICT PROMENADE (CENTRAL SECTION) RKT D1 - SECONDARY CONTACT RECREATION USE (ROWLING) NEAR KAI TAK DEVELOPMENT | <ul style="list-style-type: none"> ▼ MARINE STATIONS EM1 - CHAI WAN EM2 - TATHONG CHANNEL (TUNG LUNG CHAU NORTHWEST) EM3 - TATHONG CHANNEL (TUNG LUNG CHAU SOUTHWEST) JM3 - INNER JUNK BAY JM4 - OUTER JUNK BAY VM1 - VICTORIA HARBOUR (SHAU KEI WAN) VM2 - VICTORIA HARBOUR (QUARRY BAY) VM4 - VICTORIA HARBOUR (HUNG HONG) VM5 - VICTORIA HARBOUR (WAN CHAI) VM6 - VICTORIA HARBOUR (CENTRAL) VM7 - VICTORIA HARBOUR (WEST) VM8 - VICTORIA HARBOUR (GREEN ISLAND) VM12 - RAMBLER CHANNEL (KWA I TSING) VM14 - RAMBLER CHANNEL (TSUEN WAN) VM15 - STONECUTTER ISLAND WM2 - GREEN ISLAND (WEST) WM3 - TSING YI (SOUTH) WM4 - TSING YI (WEST) |
|---|---|---|--|

