



**Drainage Services Department
in Brief
2013-14**

Drainage Services Department in Brief 2013-14

Contents

1. Vision, Mission and Values	2
2. Organization	3 – 4
2.1 Organization Chart	3
2.2 Staff Establishment	4
3. Financial data	5 – 10
3.1 Sewage Services Operating Accounts	5
3.2 Sewage Charge	6 – 8
3.3 Operating Expenditure	9
3.4 Projects	10
4. Key Areas of Work	11 – 32
4.1 Sewage Collection, Treatment and Disposal	11 – 18
4.2 Flood Prevention	19 – 32
5. Key Statistics and Data	33 – 37
6. Public Education	38 – 39
7. Contact Us	40

1. Our Vision, Mission and Values

Vision

To provide world-class wastewater and stormwater drainage services enabling the sustainable development of Hong Kong

Mission

- Improving drainage services in a cost-effective and environmentally responsible manner
- Enhancing a caring, harmonious, safe and healthy work environment that fosters staff development and a mindset for change
- Strengthening relationships with community, industry and worldwide counterparts

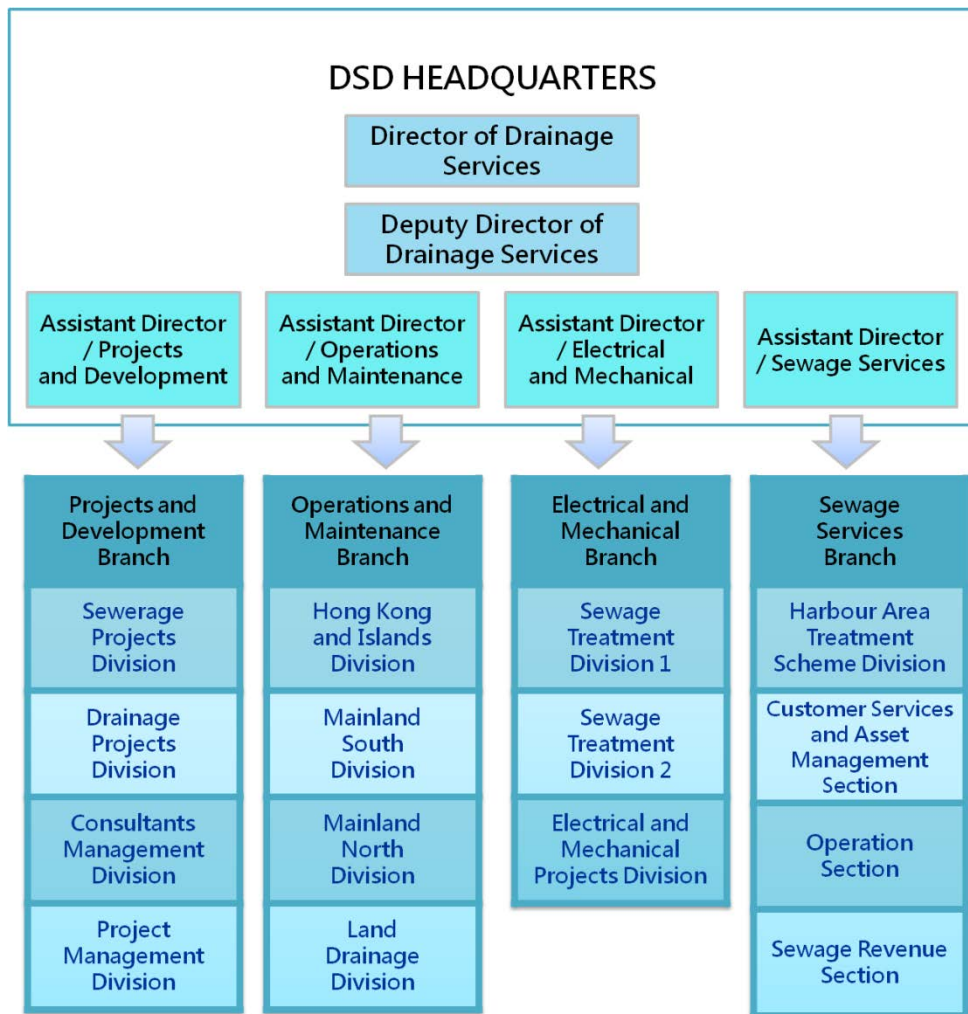
Values

- Customer Satisfaction
- Quality
- Commitment
- Teamwork

Drainage Services Department in Brief 2013-14

2. Organization

2.1 Organization Chart



Drainage Services Department in Brief 2013-14

2.2 Staff Establishment

Directorate	18	
Professional	291	
Engineer	226	
Electrical & Mechanical Engineer	43	
Electronics Engineer	2	
Shift Charge Engineer	2	
Quantity Surveyor	1	
Land Surveyor	2	
Landscape Architect	1	
Environmental Protection Officer	2	
Chemist	12	
Technical & Site Supervisory	827	
General & Common Grades	526	
Model Scale I	199	
	Total	1,861
Staff seconded to other departments	1	

Drainage Services Department in Brief 2013-14

3. Financial Data

3.1 Sewage Services Operating Accounts

(in million of HK\$)

	<u>2011/12</u>	<u>2012/13</u>	<u>2013/14</u> (Subject to <u>finalization*</u>)
Sewage Charge	703	776	855
Trade Effluent Surcharge (TES)	204	207	210
Other Revenue	40	40	42
Total Revenue	947	1,023	1,107
Total Expenditure [#]	(2,266)	(2,339)	(2,432)
Deficit	(1,319)	(1,316)	(1,325)

Including relevant departmental operating expenditure, depreciation of fixed assets, indirect expenditure from other departments, etc.

* The figures are only provisional and are subject to endorsement by the Sewage Services Accounts Committee.

Drainage Services Department in Brief 2013-14

3.2 Sewage Charge

3.2.1 Number of Accounts

	(in thousand)		
	<u>2011/12</u>	<u>2012/13</u>	<u>2013/14</u>
Sewage Charge Account	2,590	2,610	2,645
TES Account	21	22	23



Shatin Sewage Treatment Works

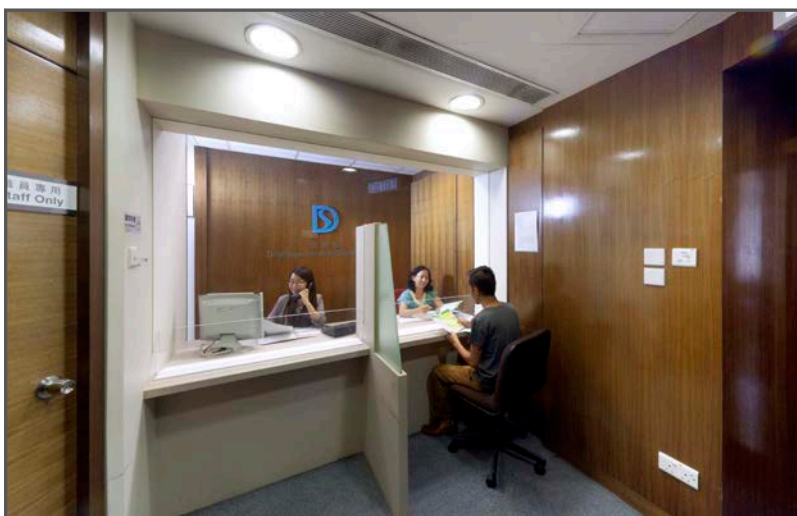
3.2.2 Categories of TES trade

- Yarn sizing
- Bleaching and dyeing of knitted fabric
- Knit outerwear
- Spinning cotton
- Medicines
- Basic industrial chemicals
- Pulp, paper and paperboard
- Washing new garments, excluding laundries
- Bleaching and dyeing of woven fabric
- Wearing apparel other than knit outerwear
- Soap and cleaning preparations, perfumes, cosmetics
- Paints, varnishes and lacquers
- Tanneries and leather finishing
- Soft drinks and carbonated waters industries
- Breweries and manufacture of malt liquor
- Distilling, rectifying and blending spirits
- Cocoa, chocolate and sugar confectionery
- Vermicelli, noodles, and similar farinaceous products
- Bakery products
- Grain mill products
- Vegetable oil, peanut oil, peppermint oil and aniseed oil
- Canning, preserving and processing of fish and crustaceans
- Canning and preserving fruit and vegetables
- Dairy products
- Slaughtering, preparing and preserving meat
- Soy and other sauces
- Restaurants

Drainage Services Department in Brief 2013-14

3.2.3 Sewage Charge Rate

Effective Period	Sewage Charge Rate (\$/m ³ of water supplied)
1.4.1995 – 31.3.2008	1.20
1.4.2008 – 31.3.2009	1.31
1.4.2009 – 31.3.2010	1.43
1.4.2010 – 31.3.2011	1.57
1.4.2011 – 31.3.2012	1.71
1.4.2012 – 31.3.2013	1.87
1.4.2013 – 31.3.2014	2.05
1.4.2014 – 31.3.2015	2.24
1.4.2015 – 31.3.2016	2.44
1.4.2016 – 31.3.2017	2.67
From 1.4.2017 onwards	2.92



Sewage Charges Customer Service Centre at G/F of Western Magistracy

Drainage Services Department in Brief 2013-14

3.3 Operating Expenditure

	(in million of HK\$)		
	<u>2011/12</u>	<u>2012/13</u>	<u>2013/14</u>
<u>Recurrent Expenditure</u>			
Personal Emoluments	727.4 (40%)	769.3 (40%)	793.5 (40%)
Departmental Expenses	1,111.2 (60%)	1,141.4 (60%)	1,178.9 (60%)
Other Charges	0.0 (0%)	0.0 (0%)	0.0 (0%)
<u>Non-recurrent Expenditure</u>	0.0 (0%)	0.0 (0%)	0.0 (0%)
Total:	<u>1,838.6</u>	<u>1,910.7</u>	<u>1,972.4</u>

Drainage Services Department in Brief 2013-14

3.4 Capital Works Projects

	Sewage Collection, Treatment and Disposal		Flood Prevention		Total	
	No.	Cost (B)	No.	Cost (B)	No.	Cost (B)
Projects in hand*	87	\$78.7	20	\$12.3	107	\$91.1
Contracts in hand**	54	\$24.0	10	\$2.8	64	\$26.7

Notes:

* “Projects in hand” includes:

- (1) All on-going Cat. A projects with works/consultancies in progress (in Money-of-the-Day price); and
- (2) All Cat. B projects. (in September 2013 price level)

** “Contracts in hand” includes all on-going works contracts.

	Sewage Collection, Treatment and Disposal		Flood Prevention		Others***		Total	
	No.	Cost (M)	No.	Cost (M)	No.	Cost (M)	No.	Cost (M)
Cat. D items in hand	202	\$1,165	73	\$484	9	\$20	284	\$1,669

Notes:

*** Others: Includes repair works for drains affecting slope safety, greening, structural survey and minor integrated sewage services and flood prevention works.

4. Key Areas of Work

4.1 Sewage Collection, Treatment and Disposal

Services provided for sewage collection, treatment and disposal include operation and maintenance of sewage treatment facilities, upgrading the existing sewerage infrastructure and building new facilities.

4.1.1 Sewerage infrastructure provided on a catchment-by-catchment basis

- The regional sewerage infrastructures are mainly proposed under the 16 Sewerage Master Plans (SMPs) and the subsequent 8 SMP Reviews.
- Total cost of sewerage projects under design and construction stages (excluding HATS) is \$61.4 billion.



Kowloon City Sewage Pumping Station No.1

4.1.2 Harbour Area Treatment Scheme (HATS), Stage 1

HATS is one of the most important infrastructure programme undertaken by the Government to improve the water quality of Victoria Harbour, and thus enhance the sustainable development of Hong Kong.

HATS Stage 1 was completed and has been put in full operation since December 2001, currently treating about 1.4 million cubic metres (about 75% of sewage generated by the population in the catchment) of sewage every day from areas on both sides of Victoria Harbour, bringing significant improvement to the water quality.

Project Scope:

Construction of about 23 km long deep tunnel system for collecting and conveying sewage from Kowloon, Tsing Yi, Kwai Chung, Chai Wan, Shau Kei Wan and Tseung Kwan O to Stonecutters Island Sewage Treatment Works (SCISTW) for chemically enhanced primary treatment.

Actual Project Cost: \$8.1 billion

Annual Operation Cost: \$320 million

4.1.2 Harbour Area Treatment Scheme (HATS), Stage-1

Key Information of HATS Stage 1

7 Preliminary Treatment Works (PTW) connected under HATS Stage 1

- Kwai Chung ● Kwun Tong ● Shau Kei Wan
- Tsing Yi ● Tseung Kwan O ● Chai Wan
- To Kwa Wan

(i) Sewage Conveyance Tunnel

Tunnel Drive	Length (km)	Diameter (m)	Level (mPD)
Chai Wan to Shau Kei Wan	2.3	1.20	-126 to -121
Shau Kei Wan to Kwun Tung	2.5	1.35	-121 to -76
Tseung Kwan O to Kwun Tong	5.3	1.35 (twin pipes)	-87 to -67
Kwun Tong to To Kwa Wan	3.3	2.82	-143 to -136
To Kwan Wan to Stonecutters Island	5.5	3.54	-136 to -125
Kwai Chung to Tsing Yi	0.8	2.21	-143 to -132
Tsing Yi to Stonecutters Island	3.6	2.36	-132 to -125

4.1.2 Harbour Area Treatment Scheme (HATS), Stage 1

Key Information of HATS Stage 1 (Cont'd)

(ii) SCISTW

HATS Stage 1 Commissioning Date	December 2001
Occupied Area	About 10 hectares
Catchments	Kowloon & Northeast Hong Kong Island
Designed Sewage Treatment Capacity	About 1,700,000 m ³ /day
Current Sewage Treatment Capacity	About 1,400,000 m ³ /day
Current Quantity of Sludge Generated	About 600 tonnes/day



Route of HATS Stage 1 sewage tunnel

4.1.3 Harbour Area Treatment Scheme Stage 2A

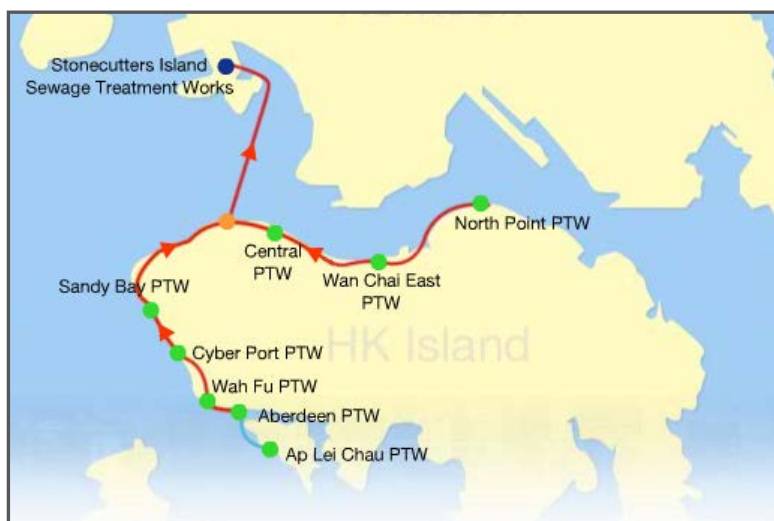
Project scope:

- Construction of about 21 km long deep tunnel system to convey the sewage from the northern and south-western parts of Hong Kong Island to Stonecutters Island;
- Upgrading of 8 existing PTWs on Hong Kong Island; and
- Enhancing the treatment capacity of SCISTW and addition of disinfection facility thereat.

Anticipated Commissioning Date: Year 2015

Approved Project Estimate: \$17.5 billion

Estimated Annual Operation Cost: \$490 million



Route of HATS Stage 2A sewage tunnel

4.1.3 Harbour Area Treatment Scheme Stage 2A

Key Information of HATS Stage 2A

8 PTWs to be connected under HATS Stage 2A

- North Point
- Wan Chai East
- Central
- Sandy Bay
- Cyberport
- Wah Fu
- Aberdeen
- Ap Lei Chau

(i) Sewage Conveyance Tunnel

Tunnel Drive	Length (km)	Size	Level (mPD)
North Point to Stonecutters Island	12	- 7.5 km long twin oval tunnels (cross-sectional area from 1.7 to 5.6 m ² each) - 4.5 km long single circular tunnel (cross-sectional area 7.1 m ²)	-163 to -148
Aberdeen to Sai Ying Pun	7.5	- Twin oval tunnels (cross-sectional area from 1.5 to 2.1 m ² each)	-123 to -80
Ap Lei Chau to Aberdeen	1.3	- Twin circular tunnels (cross-sectional area 0.28 m ² each)	-100 to 0

4.1.3 Harbour Area Treatment Scheme Stage 2A

Key Information of HATS Stage 2A (Cont'd)

(ii) SCISTW

HATS 2A Anticipated Commissioning Date	Year 2015
Occupied Area	About 10 hectares
Catchments	Kowloon, North and Southwest Hong Kong Island
Designed Sewage Treatment Capacity	About 2,450,000 m ³ /day
Estimated Sewage Treatment Capacity upon Commissioning	About 2,000,000 m ³ /day
Estimated Quantity of Sludge Generated upon Commissioning	About 800 tonnes /day



Expansion of the SCISTW

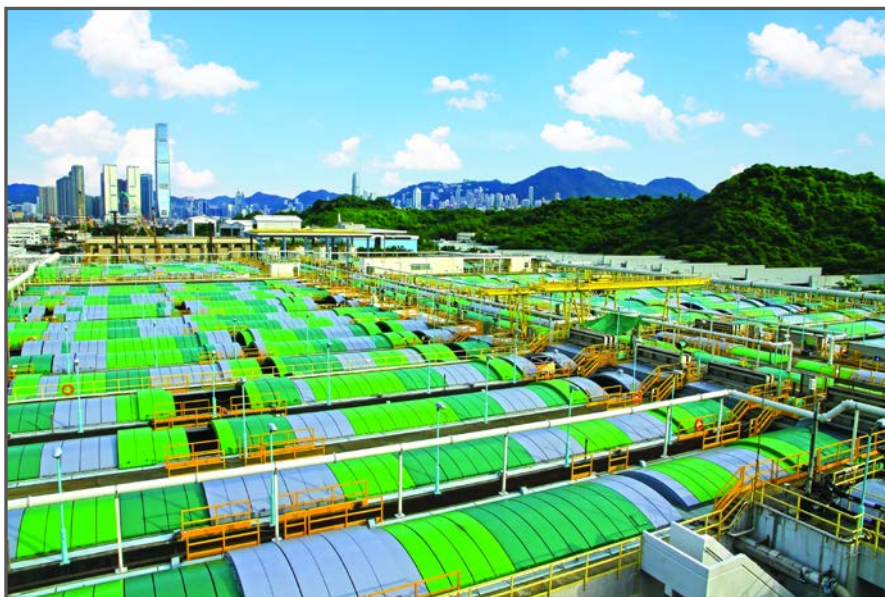
4.1.4 Harbour Area Treatment Scheme Stage 2B

Project scope:

HATS Stage 2B involves construction of a biological treatment plant on Stonecutters Island for all HATS flow.

Project status:

The implementation of HATS Stage 2B is kept under review taking into account the water quality situation and the latest technological development in biological treatment.



Sedimentation tanks at SCISTW

4.2 Flood Prevention

4.2.1 Elimination of Flooding Blackspots

Since 1995, DSD has removed 120 flooding blackspots. There are currently 11 remaining flooding blackspots in Hong Kong. The drainage improvement works for 4 of the remaining flooding blackspots have been commissioned and their effectiveness is being monitored. Subject to satisfactory performance of the completed works, these 4 flooding blackspots will be eliminated in due course. The improvement works for another 2 flooding blackspots are in progress. For the remaining 5 flooding blackspots, the first stage of improvement works has been commissioned while planning and design for the improvement works of the next stage are underway.

Flooding Blackspots removed from the List of 2013

	Location	Scale**
1	Shek Tsai Leng, Kwu Tung (North District)	1
2	Ko Po, Kan Tau Tsuen, Kwan Tei (North District)	1

Details of the 11 Remaining Flooding Blackspots (2014)

Division	District	Location	Situation*	Scale**
Mainland North	North	Ping Kong	C	2
		Nam Wah Po	C	2
	Yuen Long	Shek Wu Wai, San Tin	C	3
	Tuen Mun	Tuen Mun San Tsuen	A	1

Drainage Services Department in Brief 2013-14

4.2.1 Elimination of Flooding Blackspots

Details of the 11 Remaining Flooding Blackspots (2014) (Cont'd)

Division	District	Location	Situation*	Scale**
Mainland North	Tai Po	Lam Tsuen Valley Basin	A	2
		Ting Kok Road – Shuen Wan Chim Uk to Wong Yue Tan	A	3
		Tung Tsz Road	A	2
Mainland South	Yau Tsim Mong	Chatham Road South between Granville Road and Austin Avenue	C	1
Hong Kong & Islands	Southern	Pok Fu Lam Village	C	1
		Wong Chuk Hang Road J/O Nam Long Shan Road	B	1
	Wan Chai	Morrison Hill Road J/O Lap Tak Lane	B	2

Remarks

*Situation of Flooding Blackspots

Situation	
A	Improvement works commissioned and the effectiveness is being monitored
B	Improvement works are under construction
C	First stage of improvement works has been commissioned and works for next stage are under planning and design

4.2.1 Elimination of Flooding Blackspots

Details of 11 Remaining Flooding Blackspots (2014) (Cont'd)

Remarks

** Scale of Flooding

1	Minor
	Affecting area of less than about 50 metres x 50 metres (area less than 0.25 hectare) or resulting in minor public nuisance and inconvenience.
2	Small
	Affecting area of more than 0.25 hectares or resulting in some agricultural damage, isolated property damage, or traffic disruption.
3	Medium
	Affecting area of more than 10 hectares or resulting in significant property damage or serious traffic disruption.
4	Major
	Affecting area of more than 100 hectares or resulting in serious social or economic disruption.

Drainage Services Department in Brief 2013-14

4.2.2 Flood Prevention Works

Stormwater drainage services include implementation of flood prevention works, and operation and maintenance of stormwater drains and associated facilities. Our flood prevention works are summarized as follows:

Project Cost:

Hong Kong Island	\$5.5B
Kowloon	\$9.9B
North West New Territories (NWNT)*	\$9.0B
North New Territories (NNT)**	\$8.2B
New Territories (Other Areas) and Islands	\$3.3B
Total	\$35.9B

*** NWNT:**

	Completed works	Works under planning, design and construction
River Training	about 43 km	about 4 km
Drainage Improvement	about 9 km	about 8 km
Village Flood Protection Schemes	19 nos.	3 nos.
Stormwater Storage Tank	---	2 nos.
Cost of Works	\$5.6B	\$3.4B

4.2.2 Flood Prevention Works (Cont'd)

****NNT:**

	Completed works	Works under planning, design and construction
Shenzhen River Training	about 14 km	about 5 km
Other River Training	about 37 km	about 7 km
Drainage Improvement	about 5 km	about 4 km
Village Flood Protection Schemes	2 nos.	---
Stormwater Storage Tank	---	1 no.
Cost of Works	\$5.1B	\$3.1B



Sheung Yue River

Drainage Services Department in Brief 2013-14

4.2.3 Drainage Tunnels

	Kai Tak Transfer Scheme	Hong Kong West Drainage Tunnel	Tsuen Wan Drainage Tunnel	Lai Chi Kok Drainage Tunnel
Construction Cost (\$M)	380	3,380	1,486	1,669
Commencement Date	January 2001	November 2007	December 2007	November 2008
Commissioning Date	December 2004	August 2012	March 2013	October 2012
Length of Tunnel	1.5 km	10.5 km	5.1 km	3.7 km
Diameter	4.4 m	6.25 m to 7.25 m	6.5 m	4.9 m
Other Features	<ul style="list-style-type: none"> • stormwater discharged to Kai Tak River 	<ul style="list-style-type: none"> • 34 intake structures • outfall at Cyberport 	<ul style="list-style-type: none"> • 3 intake structures • outfall at Yau Kom Tau 	<ul style="list-style-type: none"> • 6 intake structures • stilling basin • outfall at Stonecutters Island

Drainage Services Department in Brief 2013-14

4.2.4 Stormwater Storage Schemes

	Tai Hang Tung Stormwater Storage Scheme	Sheung Wan Stormwater Storage Scheme	Happy Valley Underground Stormwater Storage Scheme
Year of Commission	2004	2009	1 st phase: 2015 (anticipated) 2 nd phase: 2018 (anticipated)
Capacity	100,000 m ³	9,380 m ³	60,000 m ³
Design Pumping Capacity	1.9 m ³ /s	6.0 m ³ /s	1.5 m ³ /s
Plan Area	16,900 m ²	1,580 m ²	24,000 m ²
Average Internal Depth	7.5 m	5.9 m	3 m
Weir Type	3 nos. of 33 m long overflow weir	N/A	15 nos. of 3 m long movable overflow weir

Remarks: Deodorization unit is provided at Sheung Wan Stormwater Storage Scheme to cope with the odour problem arising from contaminated water collected by the upstream stormwater drainage system.

Drainage Services Department in Brief 2013-14

4.2.5 Village Flood Protection Schemes

List of Village Flood Protection Schemes in operation (Total: 27 nos. of villages)

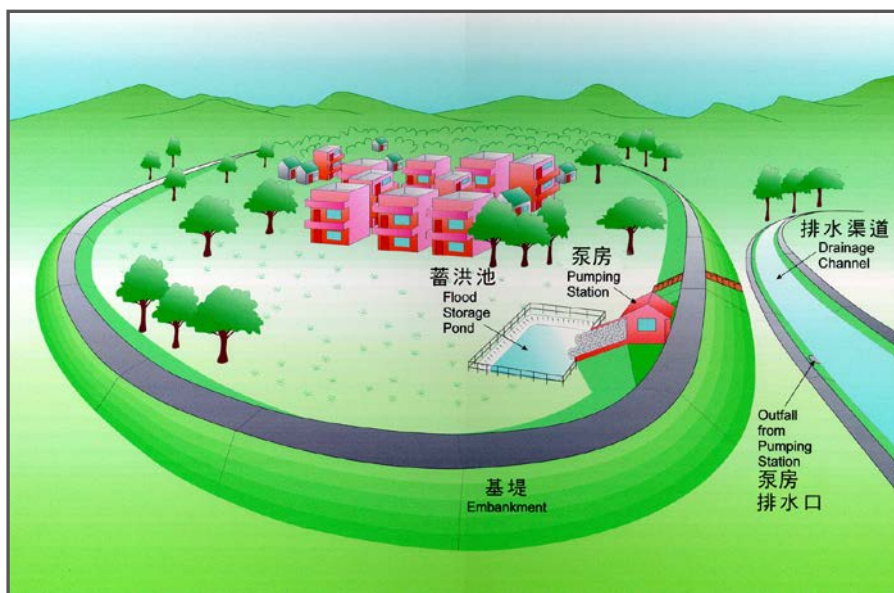
District		Schemes in Operation
NWNT	Yuen Long	Kau Hui (or Nam Pin Wai)
		Ma Tin Tsuen
		Shui Pin Wai
		Wang Chau Village
		Shui Pin Tsuen
		Tai Kiu
	Kam Tin	Sha Po Tsuen
	Ngau Tam Mei	Po Wai
		Chuk Yuen Tsuen/Ha San Wai
	San Tin	Chau Tau
		Mai Po Lo Wai/Mai Po San Tsuen
		San Tin
	Tin Shui Wai	Lo Uk Tsuen
		Sik Kong Tsuen
		Sik Kong Wai
		Kiu Tau Wai
		Ha Mei San Tsuen
		Sheung Cheung Wai
		Fung Shui Lane

Drainage Services Department in Brief 2013-14

4.2.5 Village Flood Protection Schemes (Cont'd)

List of Village Flood Protection Schemes in operation (Cont'd)

District		Schemes in Operation
NNT	Sheung Shui	Sheung Shui Tsuen
		Tai Tau Leng/Tsung Pak Long
Other areas	Sha Tin	Tsang Tai Uk
		Fo Tan
	Tai Po	Shui Wai
	Tuen Mun	Tsing Chung Koon
	Lantau Island	Tai O Wing On Street
Tai O Tai Ping Street		



Concept of Village Flood Protection Schemes

4.2.6 Reconstruction and Rehabilitation of Kai Tak River

The project covers the improvement of the upstream section of Kai Tak River from Po Kong Village Road to Tung Kwong Road, and the midstream section from Tung Kwong Road to Prince Edward Road East.

Upstream Section

Project scope:

- Reconstruction and rehabilitation of a section of Kai Tak River from Po Kong Village Road to Tung Kwong Road of about 600 m long;
- Construction of a box culvert of about 400 m long alongside the Kai Tak River from Wong Tai Sin Police Station to Tung Tai Lane;
- Relocation of affected existing watermains and sewers; and
- Associated works, including landscaping works and in-situ reprovisioning of an existing footbridge near Tung Tai Lane.

Works Commencement Date: October 2011

Anticipated Completion Date:

- To complete flood relief works in phases from 2015 onwards; and
- To complete the whole project including the greening works in mid 2017.

Approved Project Estimate: \$1.60 billion

4.2.6 Reconstruction and Rehabilitation of Kai Tak River (Cont'd)

Midstream Section

Project Scope:

- Reconstruction and rehabilitation of a section of Kai Tak River from Tung Kwong Road to Prince Edward Road East of about 500 m long;
- Utility diversion including the reprovisioning of an affected existing dry weather flow interceptor; and
- Ancillary works including landscaping works.

Works Commencement Date: December 2013

Anticipated Completion Date: End 2017

Approved Project Estimate: \$1.24 billion

Downstream Section

Improvement works at the downstream section to be implemented by Civil Engineering and Development Department. Relevant works commenced in January 2013, and is estimated to be completed in phases from 2016 to 2018.

Drainage Services Department in Brief 2013-14

4.2.7 Drainage Master Plan Studies

DSD has completed 8 Stormwater Drainage Master Plan (DMP) Studies and 3 Drainage Studies. Since 2008, DSD has commenced a series of DMP Review Studies, which are summarized as follows:

Review Study Area		Status
1.	Yuen Long	Completed in 2011
2.	North District	
3.	Happy Valley	
4.	West Kowloon	In progress, anticipated to be completed in 2014
5.	East Kowloon	
6.	Tai Po	In progress, anticipated to be completed in 2015
7.	Sha Tin and Sai Kung	
8.	North Hong Kong Island	Scheduled to commence in 2014
9.	Lantau and Outlying Islands	Under planning
10.	Tsuen Wan, Tuen Mun and Tsing Yi	
11.	Tseung Kwan O	
12.	South Hong Kong Island	

4.2.8 Nullah Beautification Works

Completed Nullah Beautification Works:

1. Mong Kok Road Nullah, Mong Kok
2. San Kwai Street Nullah Ramp, Kwai Chung
3. Fung Fai Terrace Nullah, Happy Valley
4. Lung Chu Street Nullah, Sham Shui Po
5. Joyful Building Nullah, beside Tsuen Tak Garden, Tsuen Wan
6. Summit Terrace Nullah, south of Tsuen King Circuit, Tsuen Wan
7. Yip Shing Street Nullah, Kwai Chung
8. Kwai Wing Road Nullah Ramp, Kwai Chung
9. Jordan Valley Nullah, Kwun Tong
10. Rambler Crest Nullah, Tsing Yi
11. Flower Market Road Nullah, Mong Kok
12. Tonkin Street Nullah, Sham Shui Po
13. Queen's College Nullah, Causeway Road, Causeway Bay
(Renamed as Fire Dragon Path)
14. Fuk Man Road Nullah, Sai Kung (Renamed as Fuk Man Garden)

Drainage Services Department in Brief 2013-14

4.2.8 Nullah Beautification Works (Cont'd)

To be completed:

	Progress
Kai Tak River, Choi Hung Road, Wong Tai Sin	We have accepted the majority views collected from the public engagement exercise that the River should be kept uncovered as far as possible. Works are expected to be completed in phases from 2015 to 2017.
Staunton Creek Nullah, Heung Yip Road, Wong Chuk Hang	As this project partially overlaps with Highways Department's South Island Line (East) project, Highways Department has commissioned MTR to carry out the improvement works of Staunton Creek Nullah in the South Island Line (East) project. Works are expected to be completed in 2014.

Drainage Services Department in Brief 2013-14

5. Key Statistics and Data

Sewerage network in Hong Kong is currently serving 93% of the population.

Assets: Wasterwater and Stormwater Drainage Systems

● Length of sewers (foul)	1,695 km
○ HK & Islands	472 km
○ Mainland North	439 km
○ Mainland South	784 km
● Length of sewage tunnels	42 km
● Length of underground stormwater drains	2,384 km
○ HK & Islands	520 km
○ Mainland North	709 km
○ Mainland South	1,155 km
● Length of engineered channels	354 km
○ HK & Islands	35 km
○ Mainland North	283 km
○ Mainland South	36 km
● Length of drainage tunnels	22 km
	<hr/>
	4,497 km

Drainage Services Department in Brief 2013-14

5. Key Statistics and Data (Cont'd)

Assets: Plants

Preliminary Treatment Works	21
Primary Treatment Works	2
Chemically Enhanced Primary Treatment (CEPT) Works	4
Major Secondary Treatment Works	6
Minor Secondary Treatment Works	34
Tertiary Treatment Works	1
Total nos. of Sewage Treatment Works	68
Sewage Pumping Stations	225
Stormwater Pumping Stations	34
Total	327



Sheung Wan Stormwater Pumping Station

Drainage Services Department in Brief 2013-14

5. Key Statistics and Data (Cont'd)

Major Sewage Treatment Works	Treatment Capacity (m³/day)
Preliminary Treatment Works	
● North West Kowloon Preliminary Treatment Works	406,080
● Kwun Tong Preliminary Treatment Works	333,000
Primary Treatment Works	
● Cheung Chau Sewage Treatment Works	4,000
● Tai O Imhoff Tank	1,200
CEPT Works	
● Stonecutters Island Sewage Treatment Works	1,725,000
● Siu Ho Wan Sewage Treatment Works	180,000
Secondary Treatment Works	
● Shatin Sewage Treatment Works	340,000
● Shek Wu Hui Sewage Treatment Works	93,000
● Tai Po Sewage Treatment Works	100,000
● Sai Kung Treatment Works	8,000
● Yuen Long Sewage Treatment Works	70,000
● Stanley Sewage Treatment Works	11,600
Tertiary Treatment Work	
● Ngong Ping Sewage Treatment Works	2,000

5. Key Statistics and Data (Cont'd)

Major Sewage / Stormwater Pumping Stations	Pumping Capacity (m³/s)
Sewage Pumping Stations	
● Stonecutters Island Main Pumping Station	31.25
● Cheung Sha Wan Sewage Pumping Station	14.70
Stormwater Pumping Stations	
● San Tin Stormwater Pumping Station	8.00
● Chuk Yuen Stormwater Pumping Station	8.00



Chuk Yuen Tsuen Stormwater Pumping Station

Drainage Services Department in Brief 2013-14

5. Key Statistics and Data (Cont'd)

Volume of Sewage Treated

(in million m³)

	<u>2011/12</u>	<u>2012/13</u>	<u>2013/14</u>
By Preliminary Treatment	286	306	303
By Primary Treatment	4	5	5
By CEPT	525	525	541
By Secondary Treatment	166	165	172
TOTAL	981	1,001	1,021

Note:

1. The volume of sewage treated by tertiary treatment in 2013/14 is about 0.15 million m³.
2. Daily quantity of sewage sludge generated in 2013/14 is about 818 tonnes.

Drainage Services Department in Brief 2013-14

6. Public Education

The following sewage treatment and flood prevention facilities are open for visiting by students or relevant organizations through prior application (application form can be downloaded at DSD's website: www.dsd.gov.hk) :

DSD Facilities	Address	Visiting Time
Shek Wu Hui Sewage Treatment Works	San Wan Road, Shek Wui Hui, Sheung Shui, N.T	<ul style="list-style-type: none"> • Mondays to Fridays (except Public Holidays) • 10:00 am - 11:30 am or 2:30 pm - 4:00 pm
Shatin Sewage Treatment Works	1 Shui Chong Street, Ma Liu Shui, Shatin, N.T	
Sai Kung Sewage Treatment Works	Wah Fuk Street, Tui Min Hoi, Sai Kung, N.T.	
Yuen Long Sewage Treatment Works	Wang Lok Street, Yuen Long Industrial Estate, Yuen Long, N.T.	
Stanley Sewage Treatment Works	Wong Ma Kok Road, Stanley, H.K.	
Ngong Ping Sewage Treatment Works	Ngong Ping Road, Ngong Ping, Lantau Island, N.T.	<ul style="list-style-type: none"> • Tuesdays to Fridays (except Public Holidays) • 10:30 am - 11:30 am or 2:30 pm - 3:30 pm

Drainage Services Department in Brief 2013-14

6. Public Education (Cont'd)

DSD Facilities	Address	Visiting Time
Lai Chi Kok Drainage Tunnel	2 Butterfly Valley Road, Lai Chi Kok, KLN.	<ul style="list-style-type: none">• Mondays to Fridays (except Public Holidays)• 10:00 am - 11:30 am or 2:30 pm - 4:00 pm
San Tin Stormwater Pumping Station	San Tin Stormwater Pumping Station, San Tin Tsuen Road, San Tin, N.T.	<ul style="list-style-type: none">• Mondays to Fridays (except Public Holidays)• 10:00 am - 11:30 am or 2:30 pm - 4:00 pm



Lai Chi Kok Drainage Tunnel Equipment Enclosure

7. Contact Us

Drainage Hotline:

2300 1110

Sewage Charges Customer Services Enquiries:

2834 9432

General Enquiries:

2877 0660

Website:

<http://www.dsd.gov.hk>

E-mail:

enquiry@dsd.gov.hk

