



# 攜手同心 改善環境

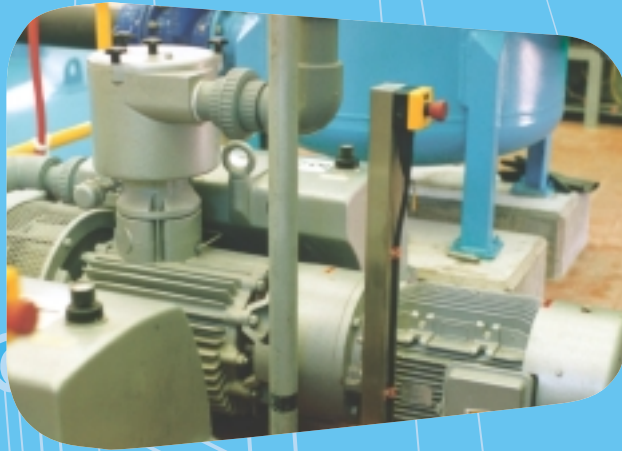
## How You Can Help

減少水污染，你都幫到手。。。。。  
You can help reducing water pollution.....

節約用水，減少製造污水  
Use water economically



適當處理工商業污水，然後排放到公共污水收集系統  
Treat heavily-polluting flow from industrial and commercial operations properly before discharging into public sewers



把用後的污水排放到污水收集系統，以免  
污染排水系統、河流或海港

Discharge sewage into the  
sewerage system in order to avoid  
polluting drainage channels, rivers  
or the harbour

向環境保護署舉報不法排放污水個案  
Report illegal discharge incidents  
to the Environmental Protection  
Department





# 攜手同心 改善環境

## How You Can Help

防止水浸，你都幫到手。。。。。  
You can help preventing floods.....

保持香港街道清潔  
Keep Hong Kong clean



保持居所附近的排水溝、溪澗及河道暢通無阻  
Keep drainage ditches, stream courses  
and river channels near your home  
clear of obstacles



把大件垃圾或棄置的傢俬電器送到附近的垃圾收集站  
Properly dispose of large piece of garbage,  
furniture or appliance at refuse collection points



就新發展項目對附近河流或溪澗的排水影響，尋求專業工程師的意見

Seek professional advice on the possible  
drainage impacts of new developments  
near stream courses or drainage channels

