

NEWSLETTER

Issue No. 14
June 2014

Contract No: DC/2009/21

Provision of Interception Facilities at Jordan Valley Box Culvert (JVBC)

Join Hands to Green the Roof

DSD's 25th Anniversary Event

To celebrate DSD's 25th anniversary, a greening event "Join hands to Green the Roof" was successfully held on 14 June 2014. Members of Kwun Tong District Council, Kowloon City District Council, green groups, professional bodies, the project team and their families had attended this meaningful event, which promotes environmental protection, green environment and sustainable development.



Visits to Interception Facilities

Briefing was provided to the guests visiting the interception facilities.



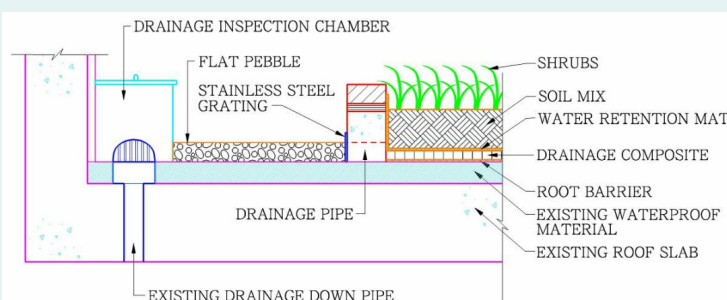
Planting at the Roof

Participants helped to complete the planting at the roof of the flow interception station. A total of about 40,000 numbers of shrubs were planted on the roof.



Green Roof System Can Benefit to:

- ❖ Lower the temperature of the indoor environment;
- ❖ Enhance energy efficiency; and
- ❖ Protect and extend the life of roof by insulation from UV light and reduction of thermal extremes.

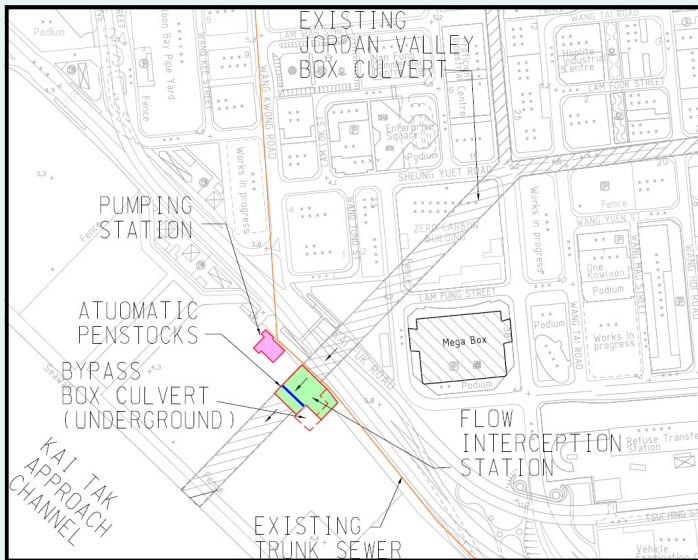


Construction Programme

Works	Start	Finish
Interception compound	Dec 2010	Jun 2013
Sewage pumping station	May 2011	Jun 2013
Architectural and landscaping works	Nov 2013	Jun 2014

Progress of Works in This Quarter

Testing on the automatic control system for the interception facilities had completed. The fence wall construction, road paving, building cladding installation and landscaping works had also completed in this quarter.



Location Plan

Completion of Project

This is the last issue of our Newsletter for this Project, which had been substantially completed in June 2014. We would like to thank the public again for their support to the successful completion of the Project.



Entrance to Flow Interception Station



Landscaping Works at Outdoor Area



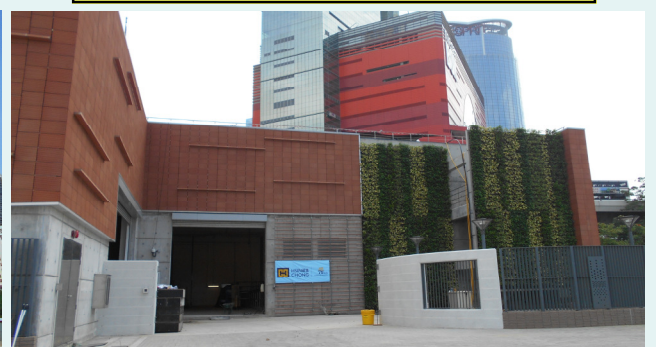
Green Roof of Flow Interception Station



Vertical Greening for Sewage Pumping Station



Final Location of Melia azedarach Tree



Vertical Greening for Flow Interception Station