

# **Search and View Drainage Records via GeoInfo Map**

## **Quick Reference Guide (Version 2)**

Revised in December 2018

# 1 Aim

Assist users in searching and viewing the Drainage Services Department’s Drainage Records via GeoInfo Map.

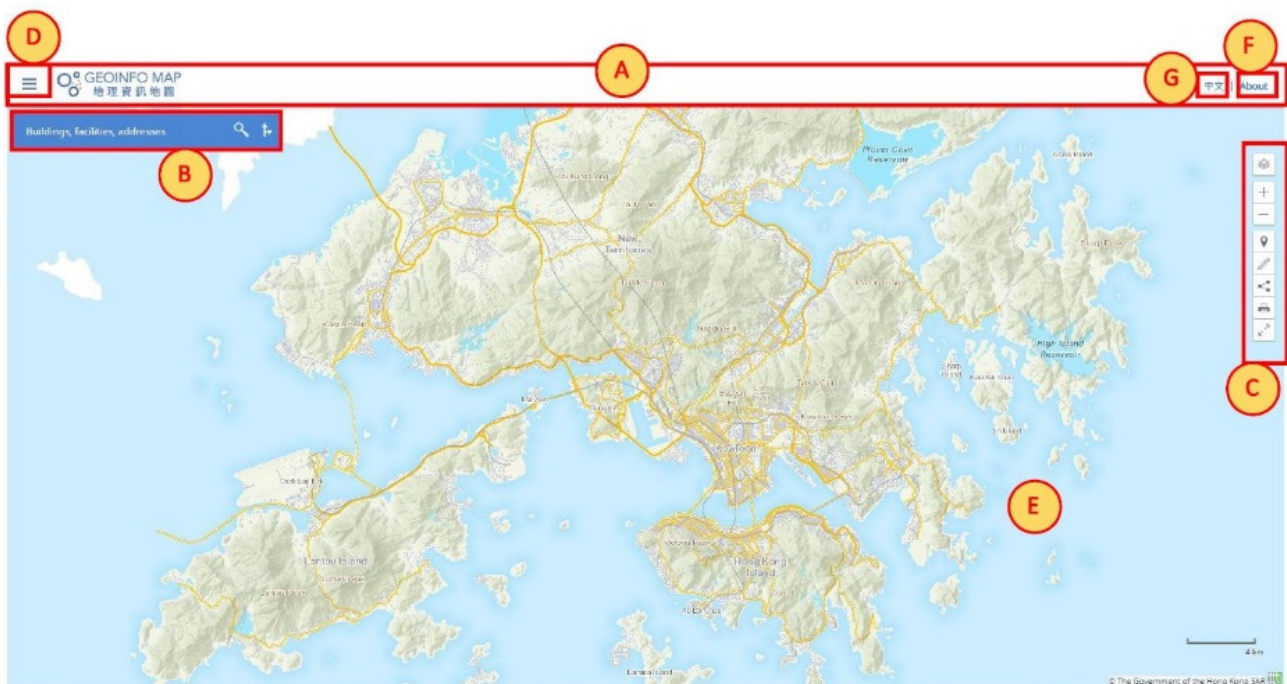
## 2 System Requirements

- Browsers: Chrome / Safari
- Recommended Screen Resolution: 1280 x 1024
- Web site of GeoInfo Map: <https://www.map.gov.hk/gm/?lg=en>

## 3 Overview of GeoInfo Map

3.1 GeoInfo Map is a geospatial information service provided by the Hong Kong Special Administrative Region (HKSAR) Government to the general public, dedicated to facilitate the searching and understanding of geographical locations, the built and natural environments, and public facilities in Hong Kong.

3.2

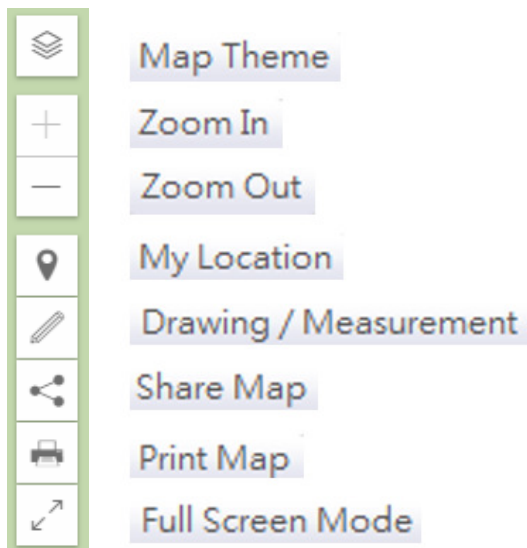



- (A) Header
- (B) Search Bar
- (C) Map Toolbar
- (D) Category / Record Panel
- (E) Map View
- (F) Information about GeoInfo Map
- (G) Language options

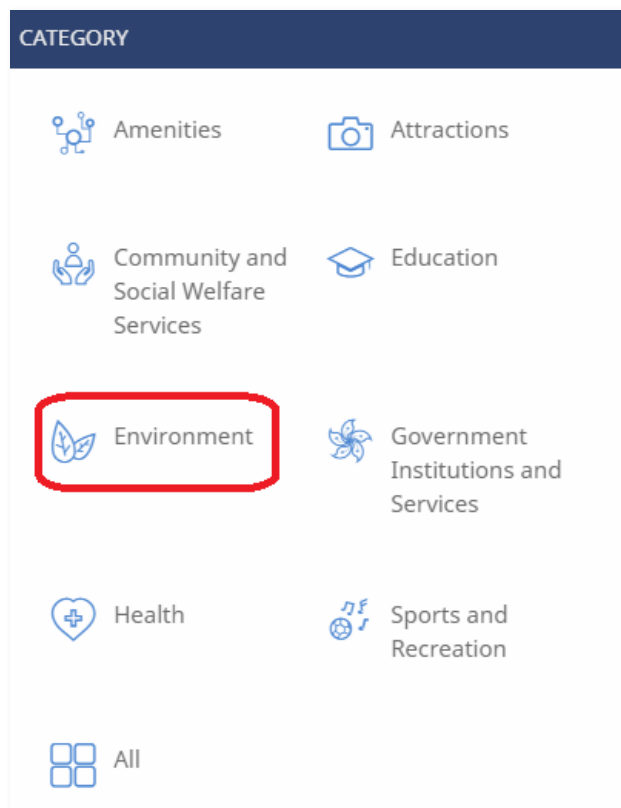
3.3 For more information about Terms and Conditions, Privacy Policy and IP Rights Notice of GeoInfo Map, please click the “About” tab at the top right corner.

## 4 View Drainage Records

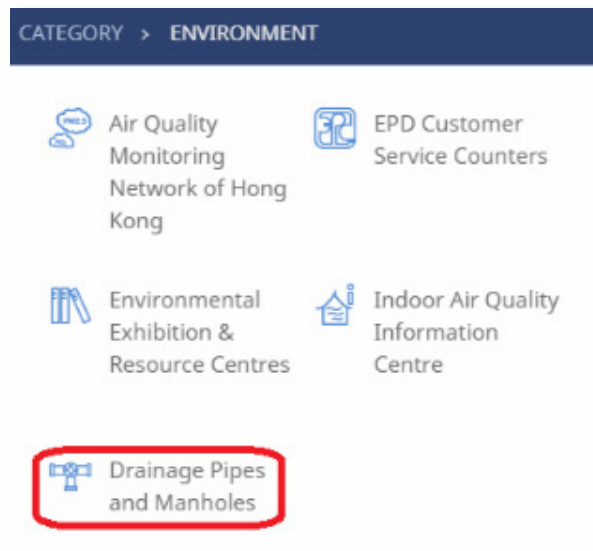
4.1 Symbols of drainage facilities will only be visible when zoom in to a certain level. To zoom in, users may use the tools available on the Map Toolbar.



4.2 Click  tab on the top left corner of the Header, then click “Environment” button.



4.3 To display the symbols of drainage facilities, click 'Drainage Pipes and Manholes' button

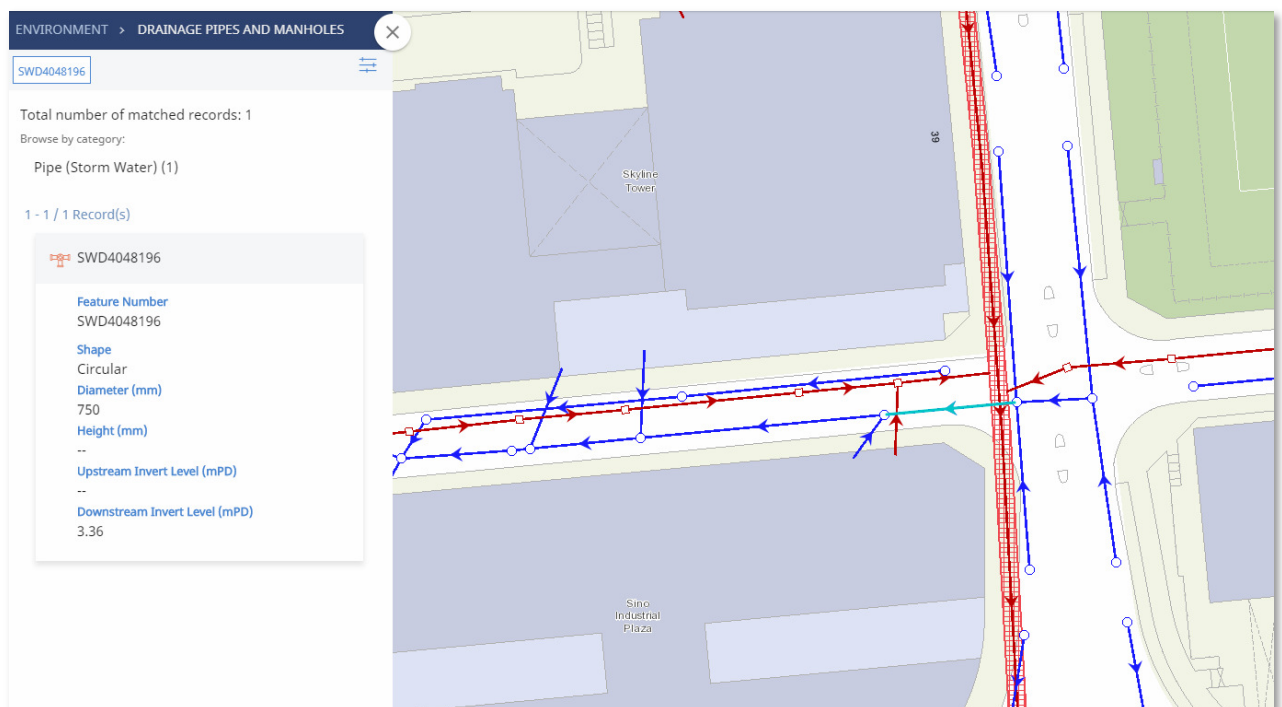


4.4 Zoom in to the area-of-interest on the Map.


Note: Symbols of drainage facilities will only be visible when zoom in to a certain level.

4.5 Click to select one of the symbols of drainage facilities on the map.

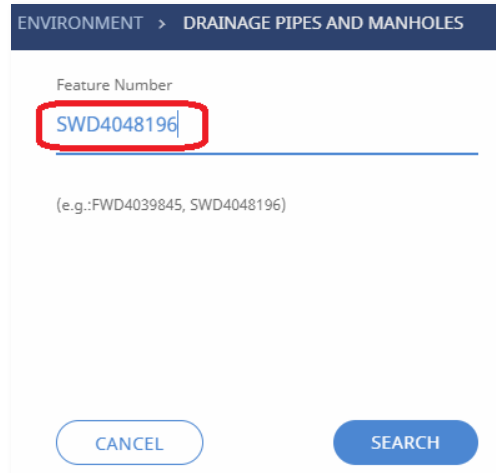
4.6 One or more drainage features close to the selected location will be selected and the corresponding information (feature number, etc) of the selected features will be shown on the Category/Record Panel on the left. The selected feature will be highlighted cyan on the map.



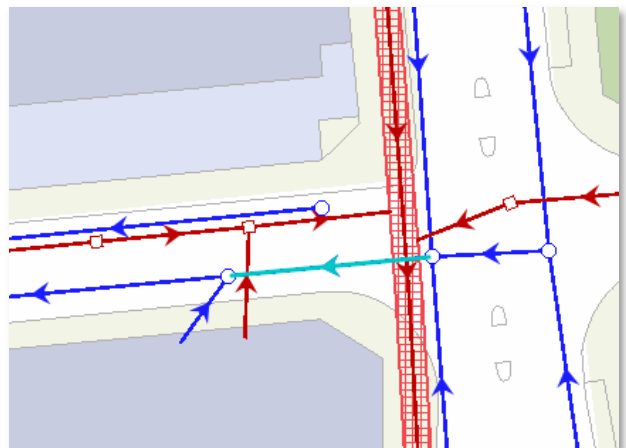
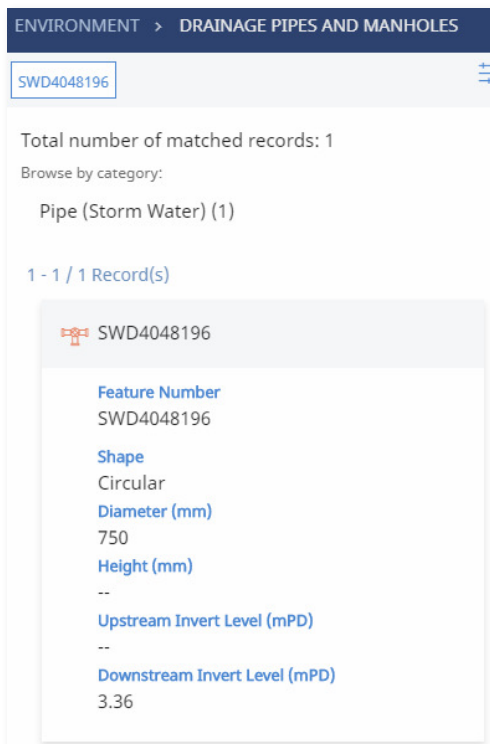
## 5 Search Drainage Records by Feature Number

5.1 Click  tab on the top left corner of the Header, click “Environment” button, and then click “Drainage Pipes and Manholes” button.

5.2 Input feature number, and then click “Search” button.



5.3 The search result is shown on the Category / Record Panel. The corresponding feature will be highlighted cyan on the map.



**-END-**